

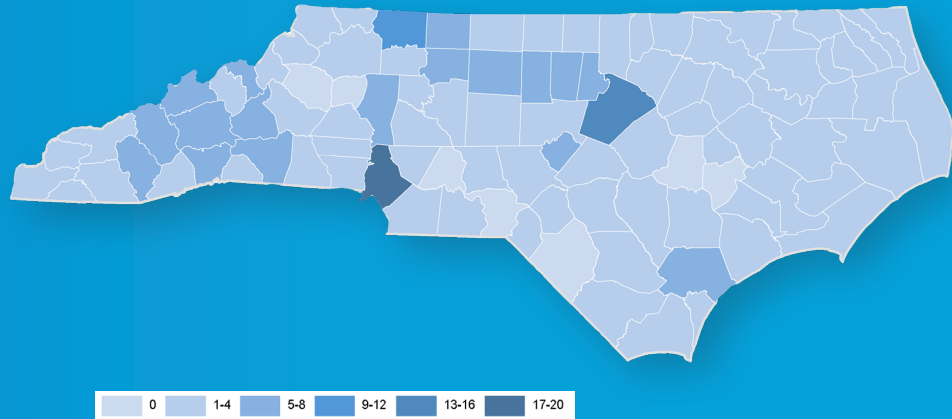
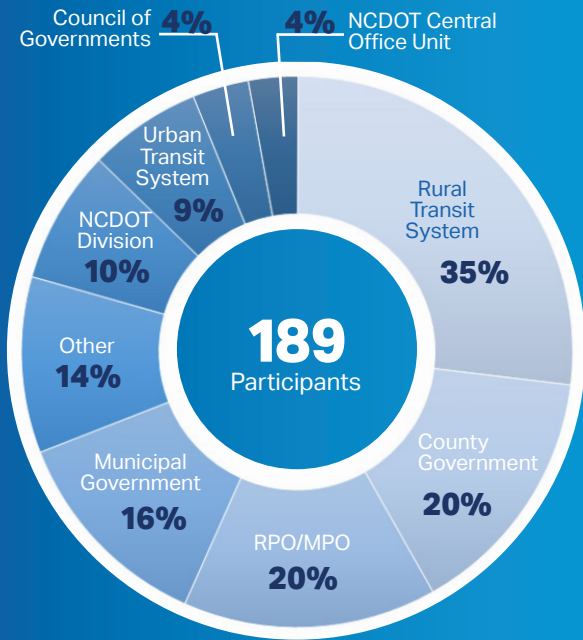
2022 IMD PARTNER SURVEY RESULTS



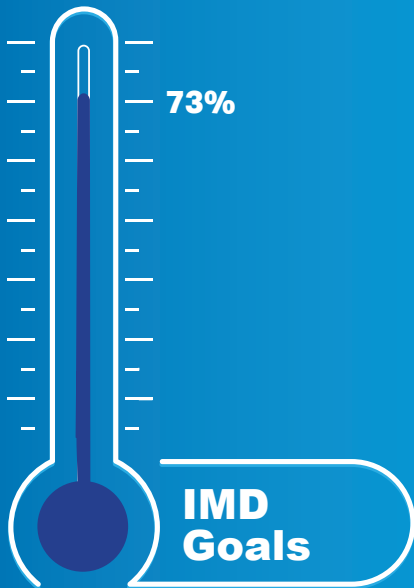
NCDOT Integrated Mobility Division launched the 2022 Partner Survey to gather feedback from transit agencies, planning organizations, and internal NCDOT units, and to establish a vision for future mobility in North Carolina.

Participants

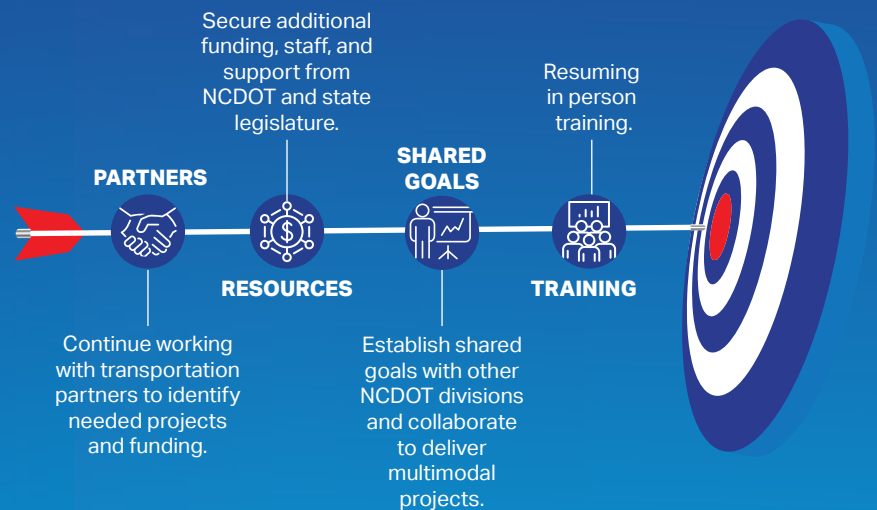
Number of Responses by County



Goal Alignment with your Organization

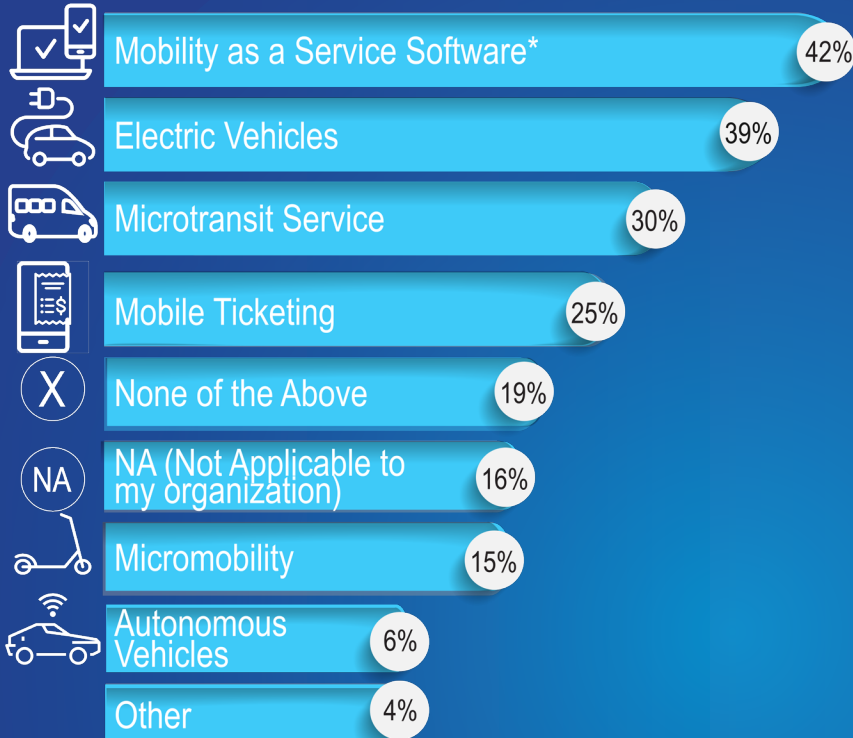


How can IMD better achieve its goals?



2022 IMD PARTNER SURVEY RESULTS

What does the ideal future of mobility look like in my region?



*Integrated app for all transit modes

Applying our guiding principles: how did we grade?



REPORT CARD

Equitable	B
Simple	B
Value-minded	B
Solution-oriented	B
Consistent	B
Customer-focused	B
Resilient	B
Innovative	B
Visionary	B

“Regional bus van pools between counties for commuters, scooters and ebike rentals at shuttle stops.”

“Significant increase in bike-ped infrastructure to provide a real multimodal choices.”

“See electric vehicles, microtransit, and micromobility coming to my region.”

“Service - an awful lot more of it. We run on 60-75 minute headways. It's no wonder only transitdependent people use our service. Even then, thousands of people in our communities have no access to public transit at all. Only gets worse as suburban sprawl continues to grow.”

“Multi-modal; safer; connecting destinations and improving choices.”