



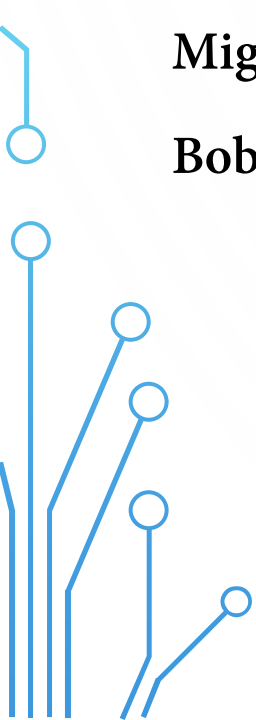
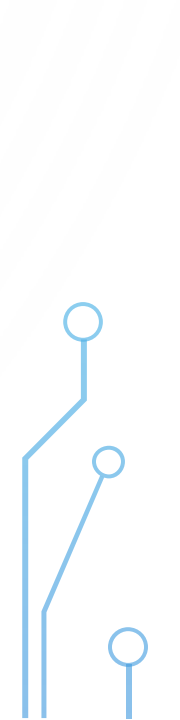
NCPTA & NCDOT-IMD PRESENT

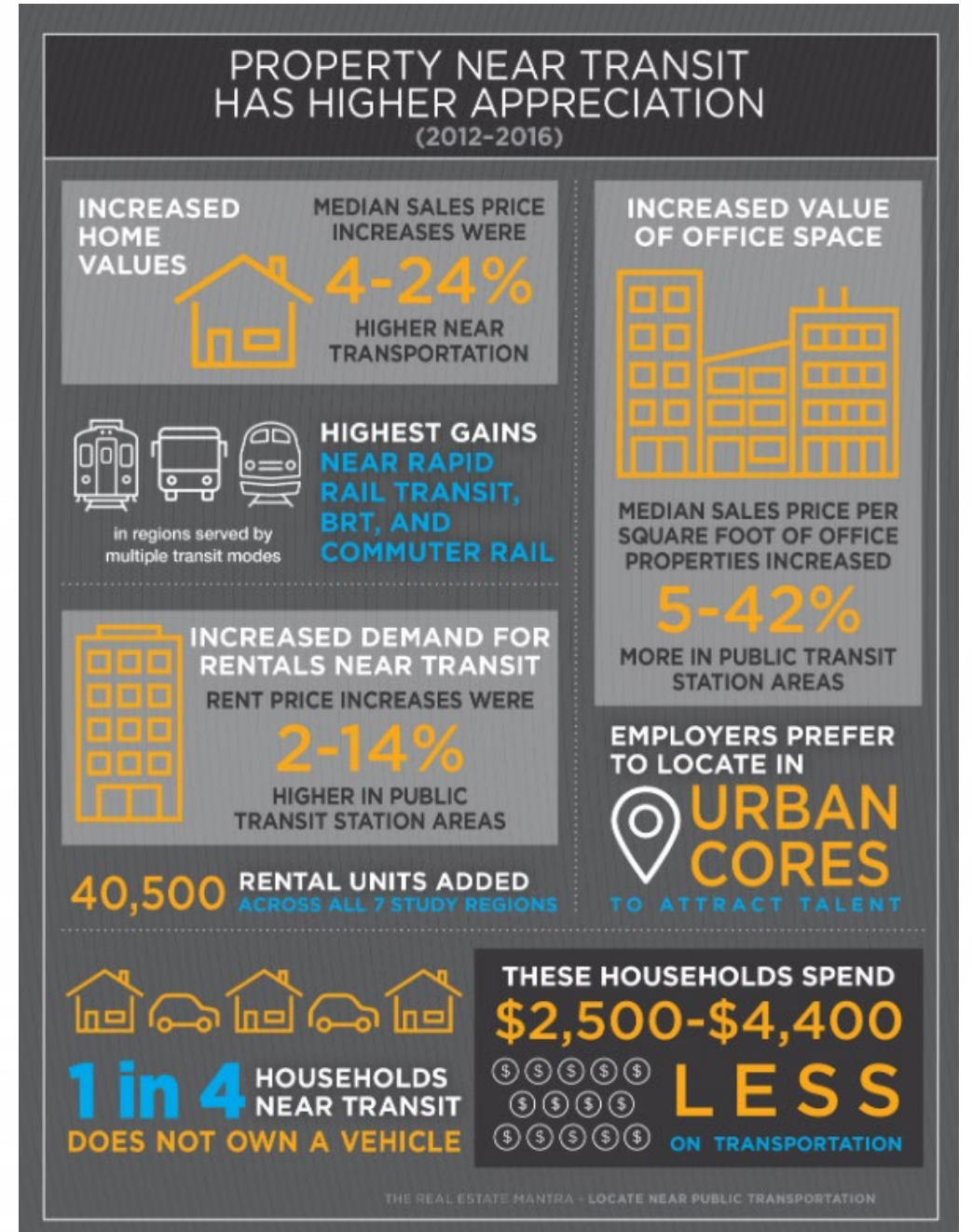
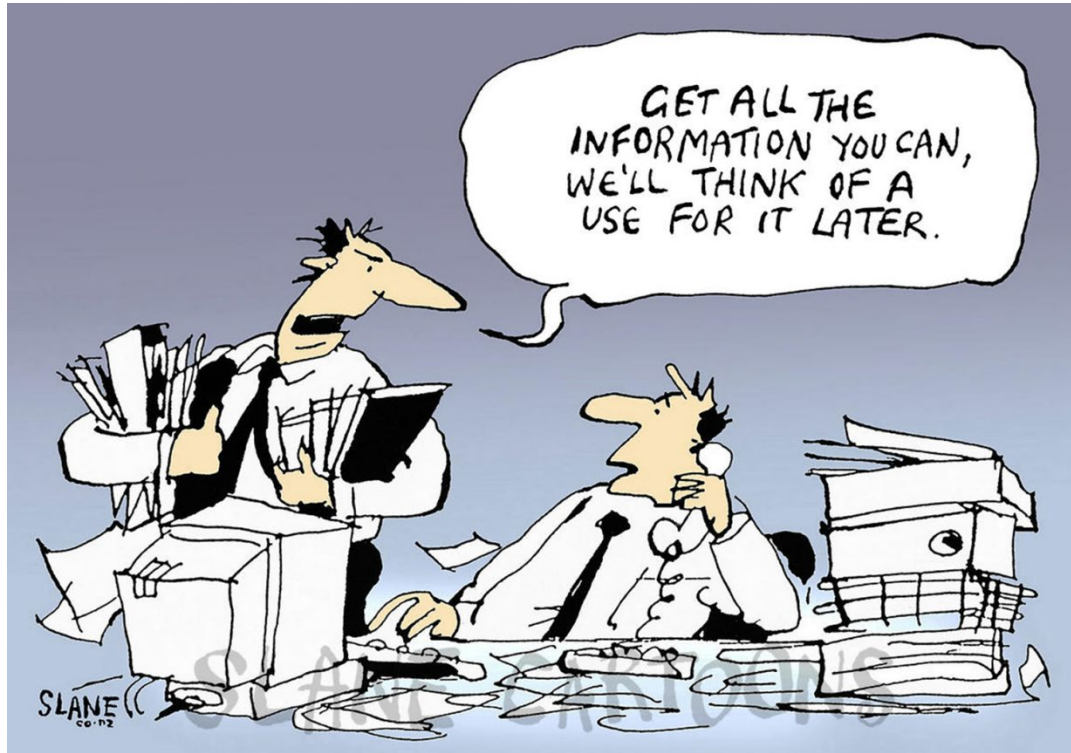
“Data for Mobility & the Importance of an Accurate Count”

Presented by:

Miguel Fernandez – Transportation Planner – PART

Bob Coats - Governor’s Census Liaison - NC Office of State Budget and Management

- 
- 
- Please make sure you sign-in with your name and organization.
 - Please use the Chat option to let us know how many people are at your location.
 - Please use the Chat option for any questions for the presenters, we will address them at the end of the presentations.



Data-Driven Transit Planning

Data for Mobility & the Importance of an Accurate Count

Public Transportation Webinar Series

January 14, 2020

Miguel Fernandez

Transportation Planner

Piedmont Authority for Regional Transportation



www.PARTnc.org

Connecting Communities

- About PART
- How Data is Used in Transit Planning
- Challenges
- Looking Forward

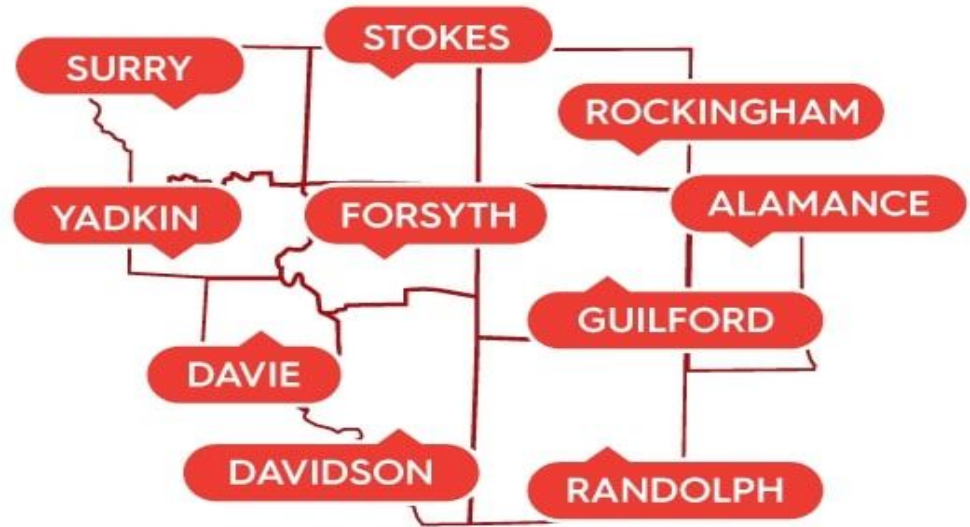


www.PARTnc.org

Connecting Communities

About PART

- Our goal is to improve transportation through regional cooperation.
- PART is a unit of local government which serves a 10-county territory of the Piedmont Triad Region.



www.PARTnc.org

Connecting Communities

PART Regional System Map

Connecting Communities



www.PARTnc.org

Connecting Communities

Data Sources

- American Community Survey (ACS)
- OnTheMap
- Automatic Passenger Counters (APC's)
- Surveys



System Analysis

Single Market Area Multiple Market Areas LEHD Jobs by Market Area LEHD Jobs by Corridor LEHD Heat Map

System Analysis: Single Market Areas

PART Market Area

789,808

people live in the PART market area

309,411

households in the PART market area

Population Under 18 Years Old

178,694

22.62 %

Households without a Vehicle

26,812

8.67 %

Population Over 65 Years Old

119,317

15.11 %

Minority Population

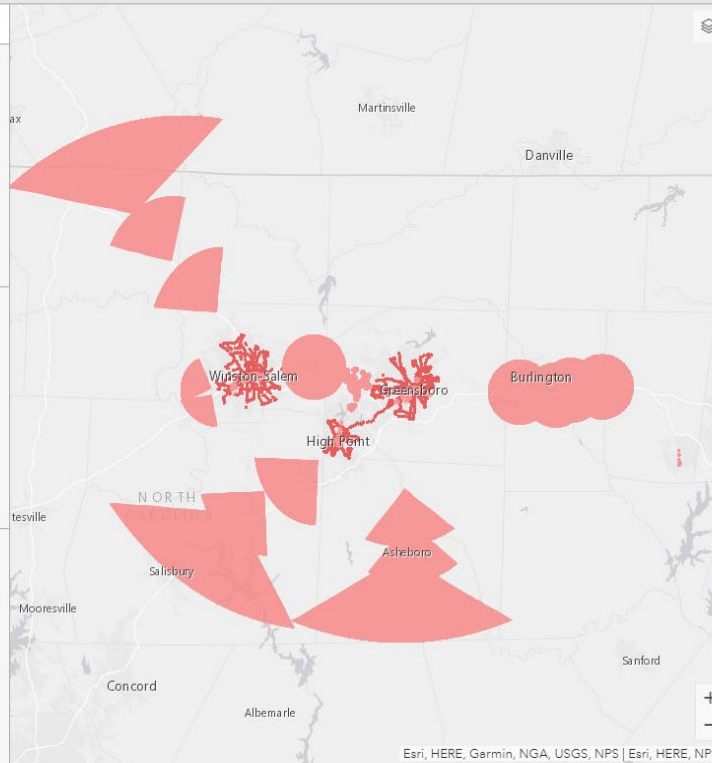
280,200

35.48 %

Households in Poverty

60,136

19.44 %



PART Market Area without Local Systems

214,281

households in the PART market area without local systems

550,232

people live in the PART market area without local systems

Population Under 18 Years Old

120,880

21.97 %

Households without a Vehicle

14,894

6.95 %

Population Over 65 Years Old

87,957

15.99 %

Households in Poverty

36,735

17.14 %

Minority Population

143,961

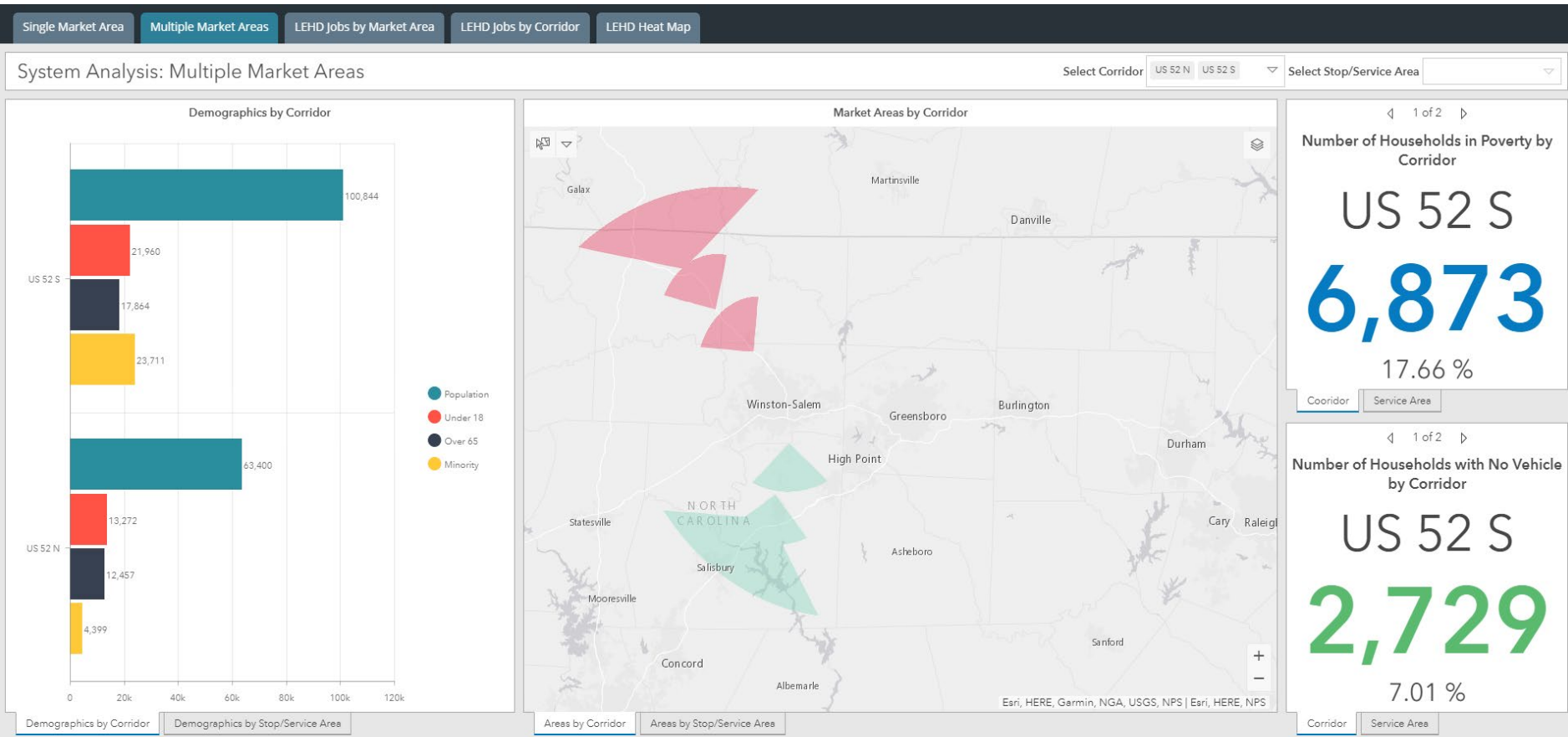
26.16 %



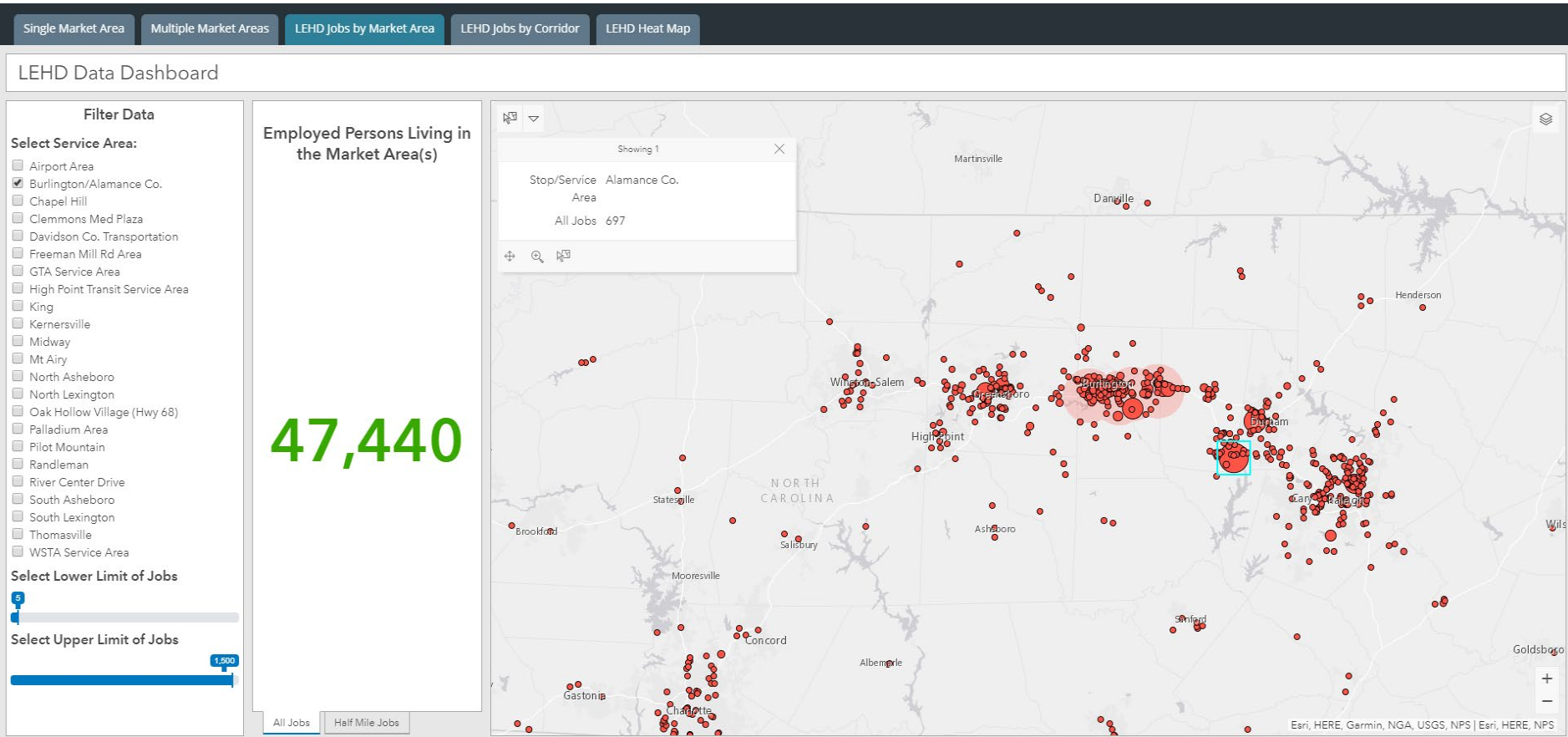
www.PARTnc.org

Connecting Communities

Rideshed by Corridor



LEHD Data by Rideshed



Automatic Passenger Counter (APC) Data

- Sensor that detects when bus doors open and close
- Infrared sensors at bus door counts passengers boarding and alighting
- Sensor that detects wheelchair ramp and bike rack activity
- GPS device that provides latitude and longitude



APC Stop Summary Data

APC Stop Summary Report for In Session 2019 (August 5, 2019 -October 31, 2019)

Does not meet Shelter Requirements		Does meet Shelter Requirements		*Use with Individual Trip	
PART Stop	AVG Daily Boardings	AVG Daily Alightings	AVG Daily Passenger Load	AVG Daily Pass Load	Stop Sequence
Hwy 68 N & Sutton Way (La Fiesta)	13.26	15.9		166.52	0
High Point Amtrak Station	30.63	7.23		35.04	0
Winston-Salem Transportation Center (L-1)	156.35	167.22		166.24	0
High Point Terminal (Outer Slip)	145.89	140.8		146.4	0
Ambulatory Care Center	25.94	21.48		26.11	0
Kernersville Town Hall Park & Ride	9.84	11.71		21.16	0
Coble Transportation Center	662.98	900.51		671.52	0
Mebane Cone Health Park & Ride	51.15	51.2		169.1	0
Forsyth Medical Center (East)	9.98	3.11		12.81	0
Mount Airy Park & Ride	23.22	31.63		24.28	0
Alamance Community College	16.79	18.6		110.23	0
South Asheboro Park & Ride	3.87	5.72		4.16	0
Davidson County Transportation Center	7.4	6.88		8.4	0
South Lexington Park & Ride	0.56	0.25		0.56	0
Clemmons Medical Plaza Park & Ride	2.29	5.61		4.33	0
Truliant	1.37	3.24		1.52	0
Greensboro Depot Slip 16	259.23	194.68		274.98	0
Winston-Salem Transportation Center (A-3)	8.9	42.14		51.79	0
4th & Chestnut	27.03	4.33		210.17	1
Industries of the Blind	0.08	0.22		14.36	1
Kernersville Medical Center (EB)	5.93	5.92		9.76	1
Centennial & Hawthorne (Northbound)	12.32	1.08		148.82	1
WSSU (MLK Jr at Williams Auditorium)	1.6	9.04		24.4	1
5th Street (WS Journal)	5.02	7.63		183.19	1
Liberty & 1st (Corpening Plaza)	4.59	9.54		27.62	1
E Washington Street (Bennett College)	0.21	0.07		44.11	1
Manning Dr at UNC Hospitals	40.09	0.66		65.01	1
Four Seasons Mall	46.28	42.23		491.26	1
Martin Luther King Jr Blvd at Airport Dr	0.06	4.14		96.11	1
Hanes Mall Blvd	0.07	0.08		1.26	1
Alamance Regional Medical Center	18.73	17.03		65.2	1
High Point Clinical Trials	1.76	7.72		47.09	1
Oak Hollow Square	0.17	0.61		2.05	1

Route

- 1 - Winston-Salem Express
- 2 - Greensboro Express
- 3 - High Point Express
- 4 - Alamance-Burlington Express
- 5 - NC Amtrak Connector
- 6 - Surry County Express
- 9 - Davidson Business 85 Express
- 10 - Randolph Express
- 17 - Kernersville Express
- 19 - Palladium Circulator
- 20 - NW Pleasant Ridge
- 21 - NE Chimney Rock
- 22 - SW Sandy Ridge

Trip Start Time

- 530
- 540
- 545
- 550
- 555
- 558
- 600
- 604
- 615
- 630
- 640
- 645
- 650

Stop Name

- Industries of the Blind
- Innovation Quarter (4th & Res...
- Innovation Quarter (5th & Pat...
- Kernersville Medical Center (...)
- Kernersville Town Hall Park & ...
- Kernersville VA Health Care C...
- King Park & Ride
- Lawrence Transportation
- Liberty & 1st (Corpening Plaza)
- Little Santee Rd & Capital Dr
- Little Santee Rd & Triad Dr
- Macy Grove Rd (Eastside)
- Macy Grove Rd (Westside)

*Select the route you want to see ridership for

*Select time for start of trip

*Select a stop(s) you want to see ridership for

Day of Week

- WKDY
- SAT
- SUN

Direction

- Dir = 0
- Dir = 1

Service Period

- AM Peak
- Off Peak
- PM Peak
- Evening

*Select day of week

*Use Stop Sequence to see which way the bus is travelling '0' is the starting point of that trip

*Select a service period you want ridership for

- *AM PEAK is 6:00 am - 8:59 am
- *OFF PEAK is 9:00 am - 2:59 pm
- *PM PEAK is 3:00 pm - 5:59 pm
- *EVENING is 6:00 pm - 5:59 am



www.PARTnc.org

Connecting Communities

APC Stop Summary Data

APC Stop Summary Report for In Session 2019 (August 5, 2019 -October 31, 2019)

</

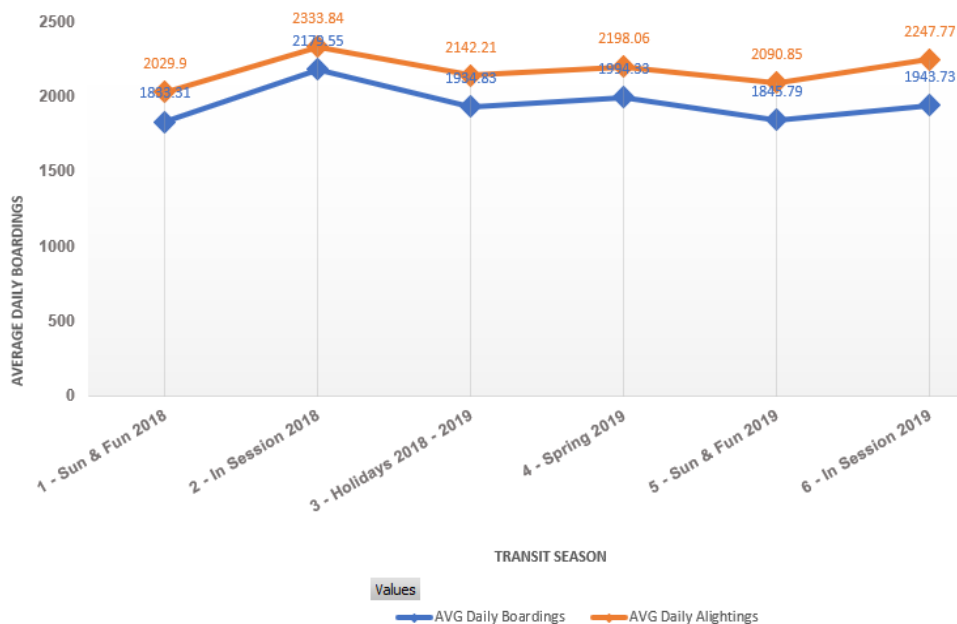


APC Stop Summary

Transit Seasons	AVG Daily Boardings	AVG Daily Alightings
1 - Sun & Fun 2018	1833.31	2029.9
2 - In Session 2018	2179.55	2333.84
3 - Holidays 2018 - 2019	1934.83	2142.21
4 - Spring 2019	1994.33	2198.06
5 - Sun & Fun 2019	1845.79	2090.85
6 - In Session 2019	1943.73	2247.77

AVG Daily Boardings AVG Daily Alightings

PART Average Daily Boardings
By Transit Season
2018 - 2019



Route

- 1 - Winston-Salem Express
- 10 - Randolph Express
- 17 - Kernersville Express
- 17 - Kville/WS Express
- 17/18 - Kville Mid-Day
- 18 - Kville/GSO Express
- 19 - Palladium Circulator
- 2 - Greensboro Express
- 20 - NW Pleasant Ridge

Stop Name

- 5th Street (WS Journal)
- Aetna (Piedmont Pkwy)
- Airpark East
- Airpark South
- Airpark West
- Alamance Community College
- Alamance Regional Medical C...
- Alorica

Day of Week

- SUN
- SAT
- WKDY

Service Period

- AM PEAK
- EVENING
- OFF PEAK
- PM PEAK

*AM PEAK is 6:00 am - 8:59 am
*OFF PEAK is 9:00 am - 2:59 pm
*PM PEAK is 3:00 pm - 5:59 pm
*EVENING is 6:00 pm - 5:59 am

Transit Season

- 1 - Sun & Fun 2018
- 2 - In Session 2018
- 3 - Holidays 2018 - 2...
- 4 - Spring 2019

*Sun & Fun: May - July
*In Session: August - October
*Holidays: November - January
*Spring: February - April

Trip Start Time

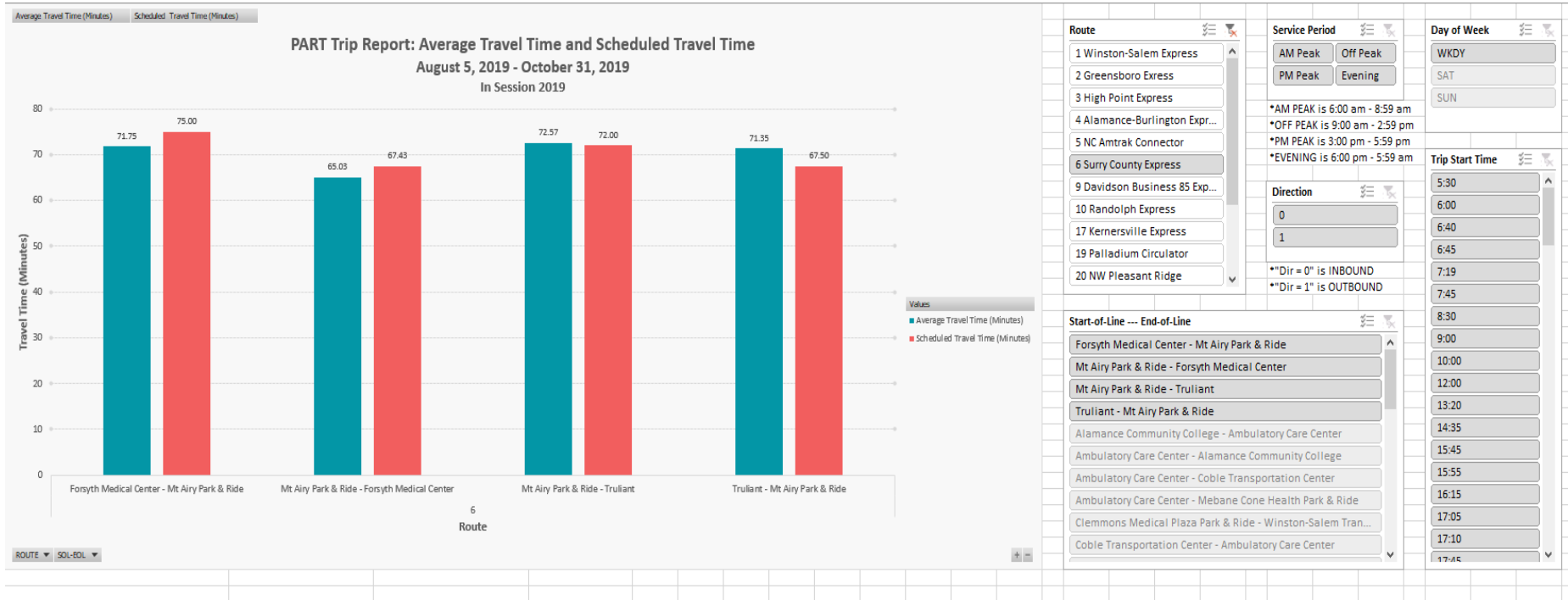
- 530
- 540
- 545
- 550
- 555
- 558
- 600
- 604



www.PARTnc.org

Connecting Communities

APC Trip Report Data



www.PARTnc.org

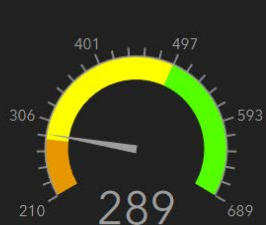
Connecting Communities

Performance Measures

PART System Performance Measures Dashboard

Select a month/year for route performance measures: July 2019

1 of 3
Average Daily Unlinked Passenger Trips for Urban Express Routes
Route 1 Winston-Salem Express
Weekday



Data from July 2019

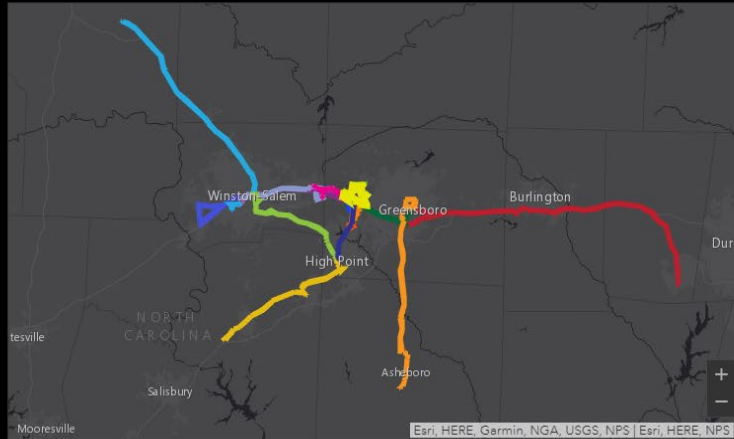
Urban Weekday

Average Daily Unlinked Passenger Trips for Hybrid Routes
Route 4 Alamance Burlington Express



Data from July 2019

Hybrid



1 of 21
Average Daily Passengers Per Revenue Hour
Route 1 Winston-Salem Express
Weekday

12.8

▲ 5.15 from system average

Date from July 2019

Pass Per Rev. Hour

Load Factor

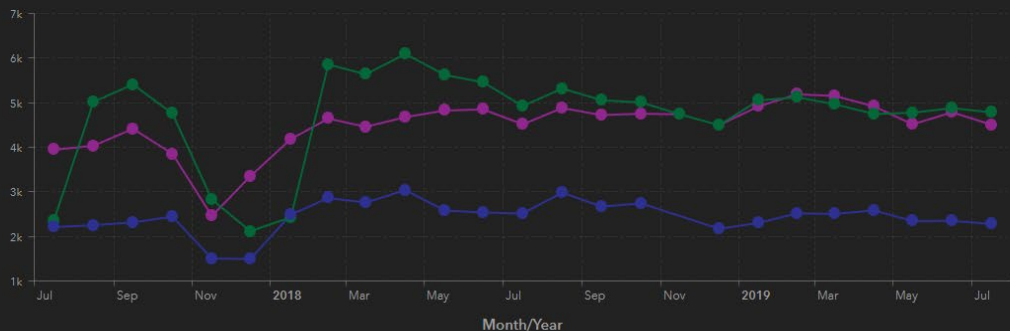
Monthly Passenger Trips



Monthly Total Pass, Trip Count

Monthly Pass, Trips Line Chart

Average Daily Passenger Miles for Urban Express Routes (Weekday)



Urban (WKDY)

Urban (SAT)

Hybrid

Specialized

Rural

Suburban Shuttles

Circulator

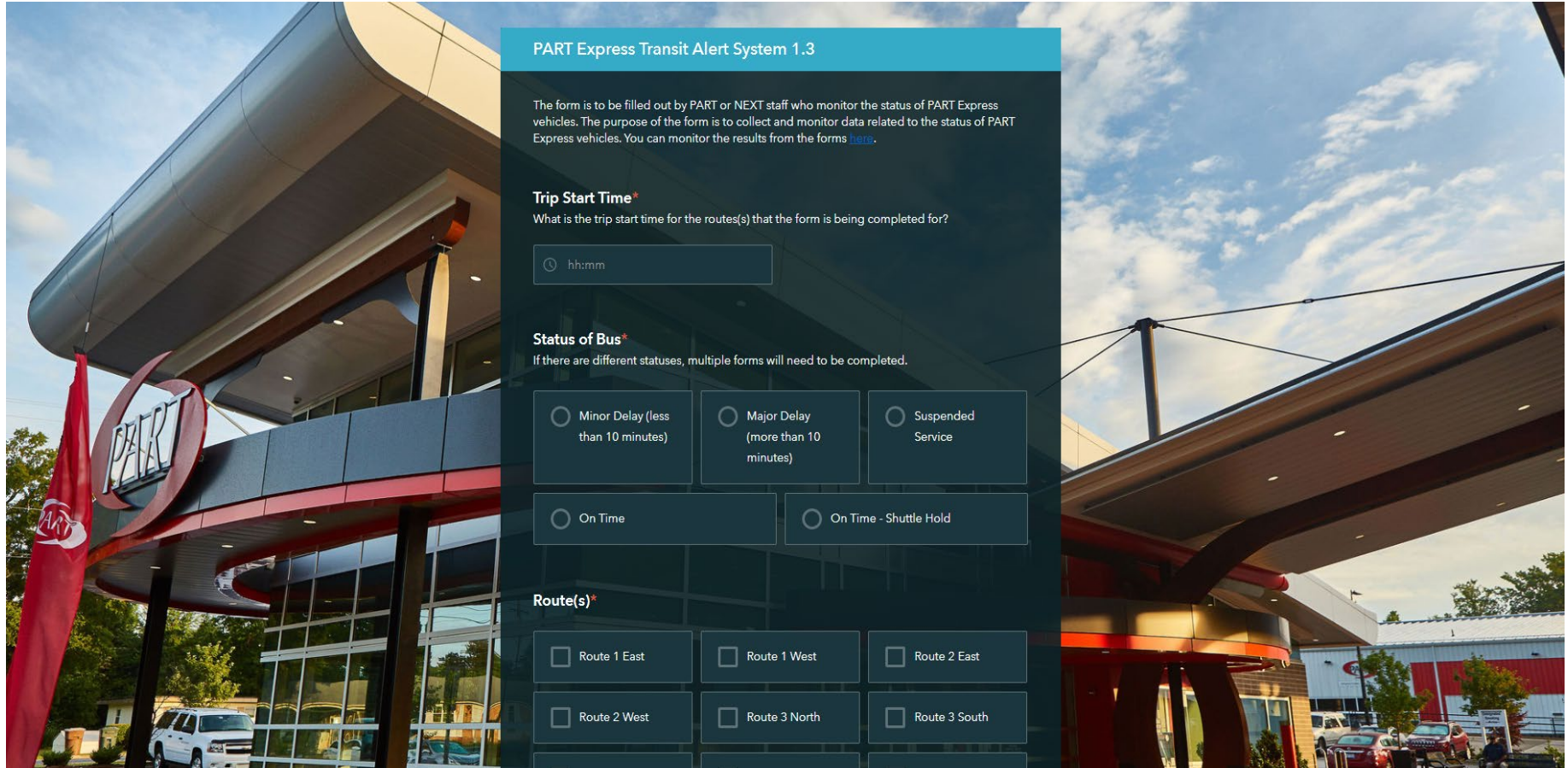
Airport (WKDY)



www.PARTnc.org

Connecting Communities

Transit Alert System



PART Express Transit Alert System 1.3

The form is to be filled out by PART or NEXT staff who monitor the status of PART Express vehicles. The purpose of the form is to collect and monitor data related to the status of PART Express vehicles. You can monitor the results from the forms [here](#).

Trip Start Time*
What is the trip start time for the route(s) that the form is being completed for?

Status of Bus*
If there are different statuses, multiple forms will need to be completed.

☐ Minor Delay (less than 10 minutes)

☐ Major Delay (more than 10 minutes)

☐ Suspended Service

☐ On Time

☐ On Time - Shuttle Hold

Route(s)*

☐ Route 1 East

☐ Route 1 West

☐ Route 2 East

☐ Route 2 West

☐ Route 3 North

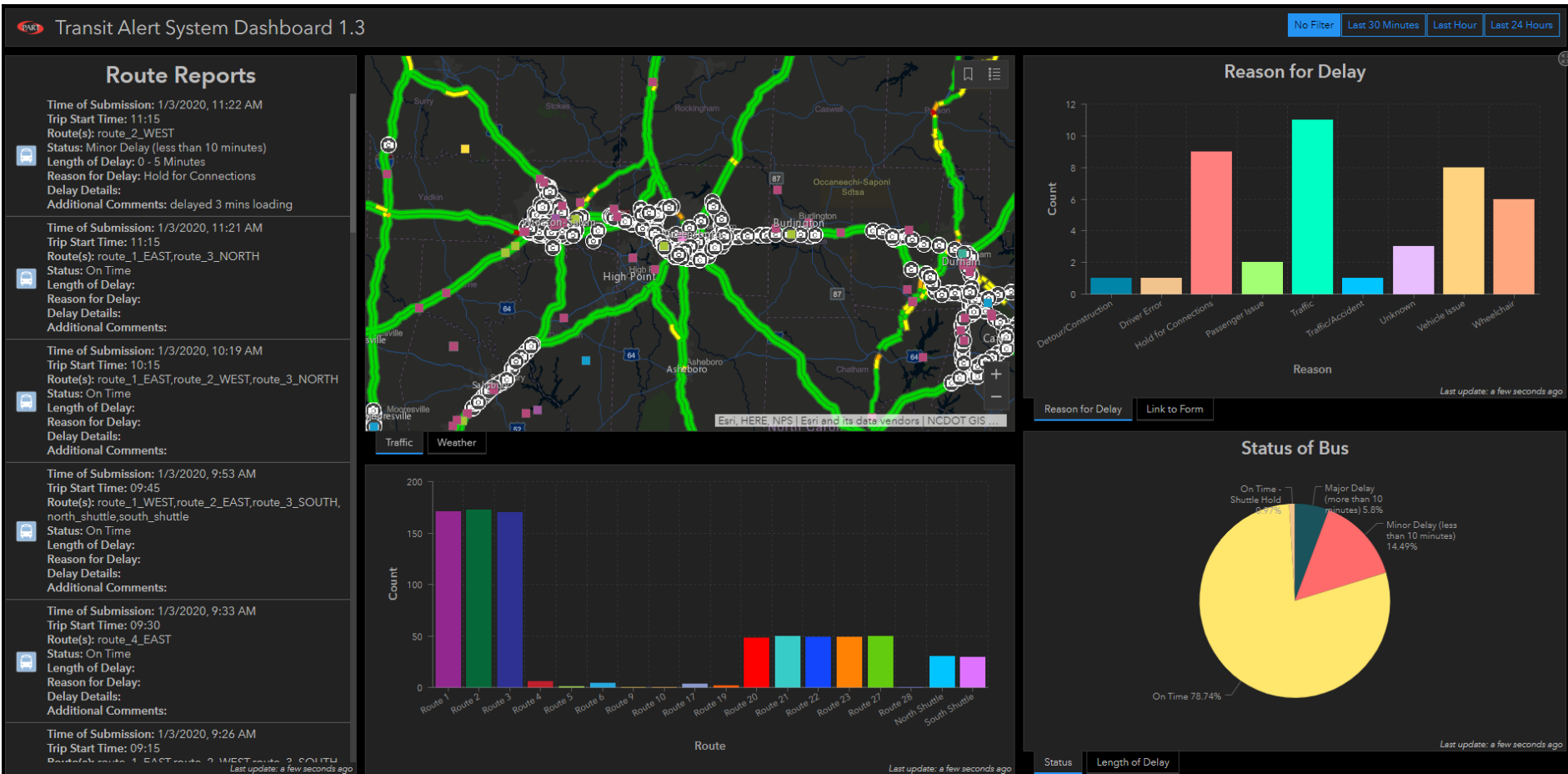
☐ Route 3 South



www.PARTnc.org

Connecting Communities

Transit Alert System



www.PARTnc.org

Connecting Communities

Challenges

- Longitudinal Employer-Household Dynamics data from 2015
- No deployment plan for buses and APC's
- Updating the Performance Measures dashboard is a very manual process
- There was a learning curve when PART made the switch from the email blast to the Transit Alert System



Looking Forward

- Deep analysis of Transit Alert System
- Conduct further passenger surveys to refine PART's rideshed
- Update Bus Stop Inventory



www.PARTnc.org

Connecting Communities

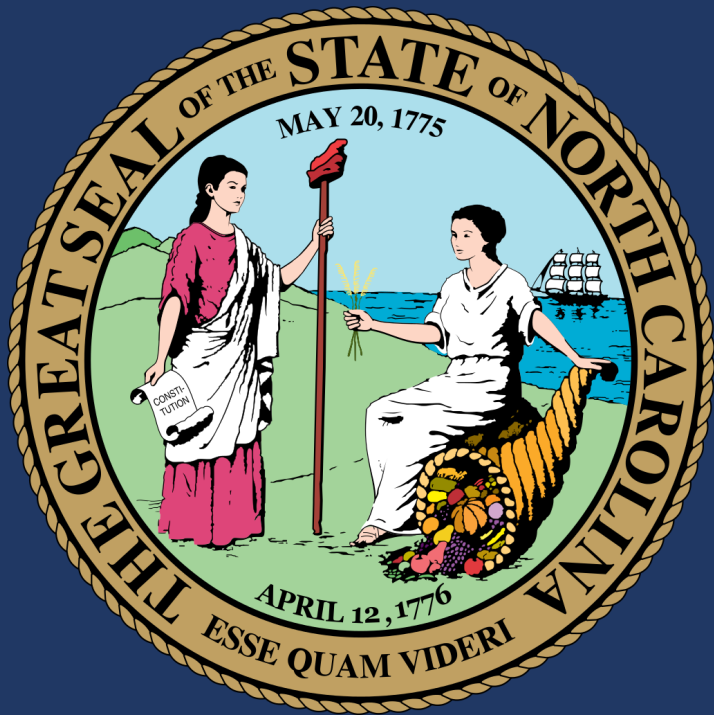
Thank you!

Miguel Fernandez
Transportation Planner
Piedmont Authority for Regional Transportation
miguelf@partnc.org



www.PARTnc.org

Connecting Communities



Making NC Count Piedmont Authority for Regional Transportation January 14, 2020

Bob Coats
Governor's Census Liaison
North Carolina State Data Center
Office of State Budget & Management,
Demographic & Economic Analysis Section

Bob.Coats@osbm.nc.gov



North Carolina Population vs. Other States

9th Largest State at 10.5 Million

4th Largest Population Gain (952,000 people), April 2010 to July 2019

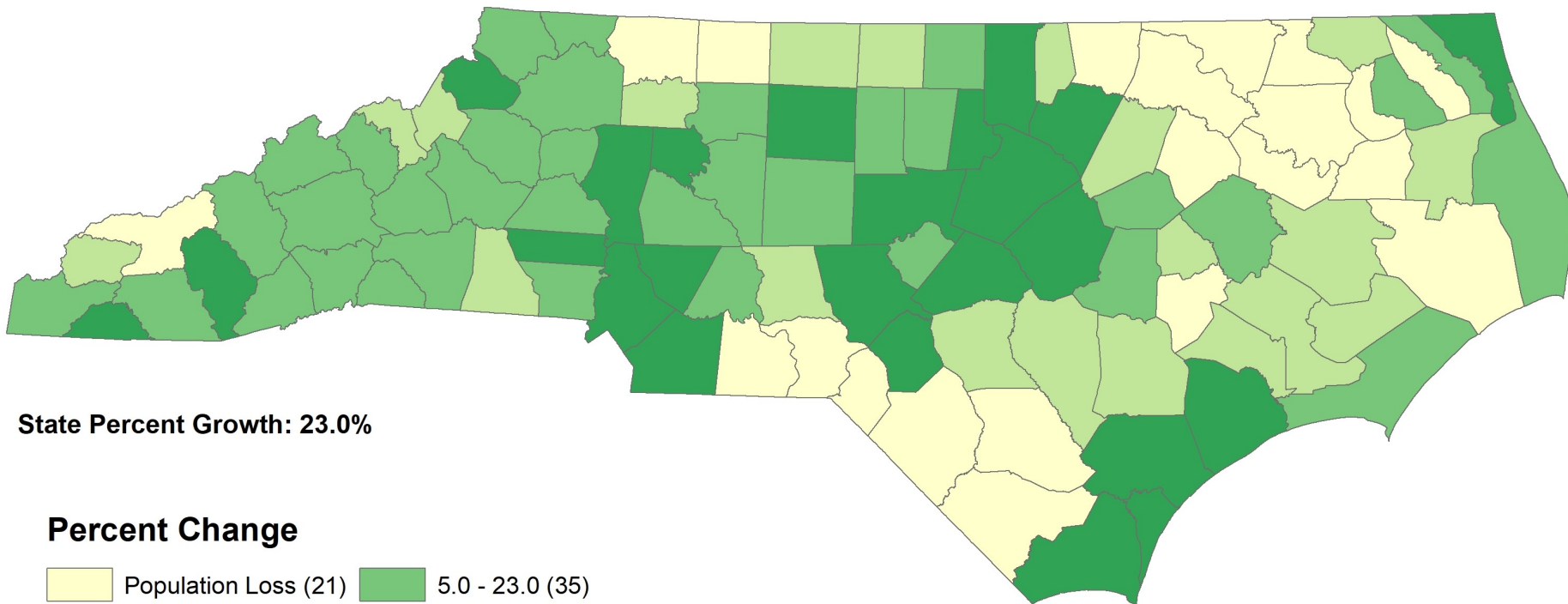
Geographic Area	Population Estimate		Change, 2010-2018	
	April 1, 2010	July 1, 2018	Numeric	Percent
<i>United States</i>	308,758,105	328,239,523	19,481,418	6.3
California	37,254,519	39,512,223	2,257,704	6.1
Texas	25,146,091	28,995,881	3,849,790	15.3
Florida	18,804,564	21,477,737	2,673,173	14.2
New York	19,378,144	19,453,561	75,417	0.4
Pennsylvania	12,702,868	12,801,989	99,121	0.8
Illinois	12,831,572	12,671,821	-159,751	-1.2
Ohio	11,536,751	11,689,100	152,349	1.3
Georgia	9,688,729	10,617,423	928,694	9.6
North Carolina	9,535,751	10,488,084	952,333	10.0
Michigan	9,884,116	9,986,857	102,741	1.0

Source: U.S. Census Bureau, Population Estimates, Vintage 2019. 2010 census estimates base.



Projected Population Change, July 1, 2019 – July 1, 2039

Projected Growth in Majority of NC Counties



Source: North Carolina Office of State Budget & Management, Demographic & Economic Analysis, Population Projections, Vintage 2019.

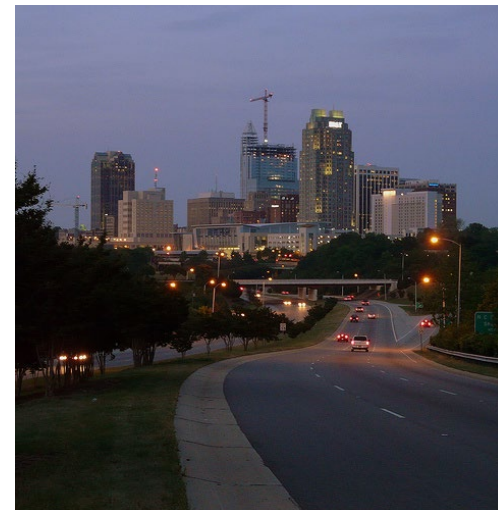


You May Have Heard ...



MAKE NC COUNT

C E N S U S 2 0 2 0



Shape
your future
START HERE >

United States[®]
**Census
2020**



Census Impact

- **Our Voice (Representation)**

- Census is required by the US Constitution
- Count every resident, once, and in the right place
- Apportionment and Redistricting

- **Our Tax Dollars (Funding)**

- \$1,623 per person, per year in Federal Funding to NC based on Census data in FY2015
- About \$200 per person, per year in state funding based on Census data

- **Our Future (Planning)**

- Largest survey in the US providing reliable, comparable data
- Vital for business and local government service



Decennial Census is a Foundation

- **Geographic Foundation**

- Census Redistricting
Establishes the smallest geographic units (census blocks) used for redistricting
- Participant Statistical Areas Survey (PSAP)
Defining statistical boundaries for the next decade including tribal areas and Census Designated Areas
- Boundary Annexation Survey (annual)
Verifying boundary changes

- **Demographic Foundation**

- Largest and most granular survey
Foundation for other Census estimates, models, and surveys throughout the decade like ACS and LEHD



Census Data at Work



Classroom
size

Service
Audience



Infrastructure
Workload



What Can We Expect?

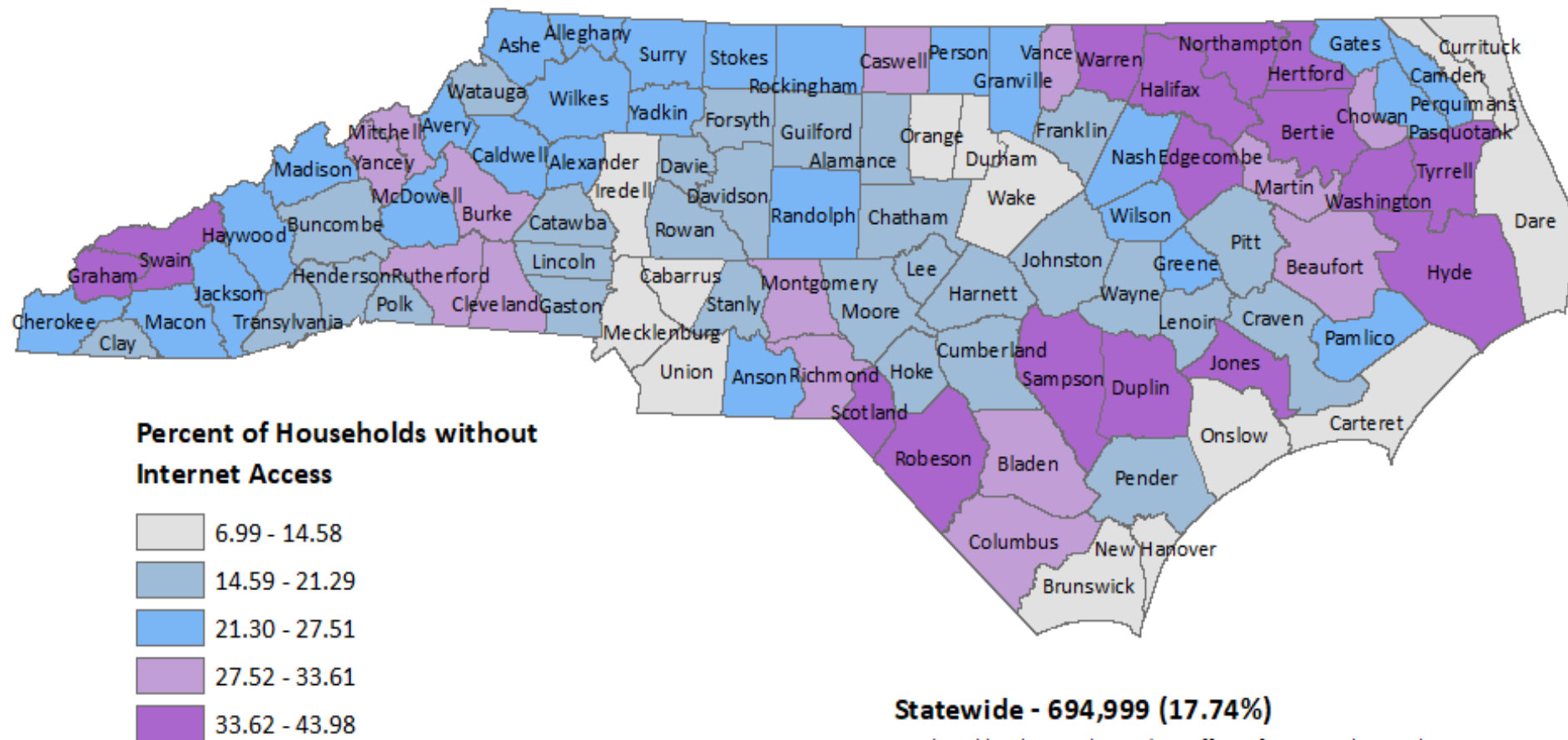
- **Census Mailings in March 2020**
Internet, phone, and paper response options will be available
- **April 1, 2020 is Census Day**
Non-response Follow Up will begin in April
- **State Populations must be reported by December 31, 2020**
These numbers determine apportionment of seats in Congress
- **Redistricting Files will be delivered in Spring 2021**
- **Census Count Challenges can be submitted through 2023**
Challenges can only be submitted by local/tribal governments
- **Metropolitan Statistical Areas will be redefined in 2023**



Internet Access in North Carolina

Percent of Households Without Internet Access

Source: 2014-2018 American Community Survey, US Census Bureau





Questionnaire Assistance

- Assistance in responding to the 2020 Census will be available through online chat or by phone
- Census staff may be available on the ground in mid-March to assist
- Local communities should plan to schedule Census assistance at locations with internet access



You Can Help!





Here's Where to Start

- Start/join a Complete Count Committee
Stay connected with the NC CCC
- Involve agency partners - staff and customers
- Leverage your existing resources

Add the NC Census Logo to your website and email taglines

Link to census.nc.gov

Use #MakeNCCount and @NCCensus on social media

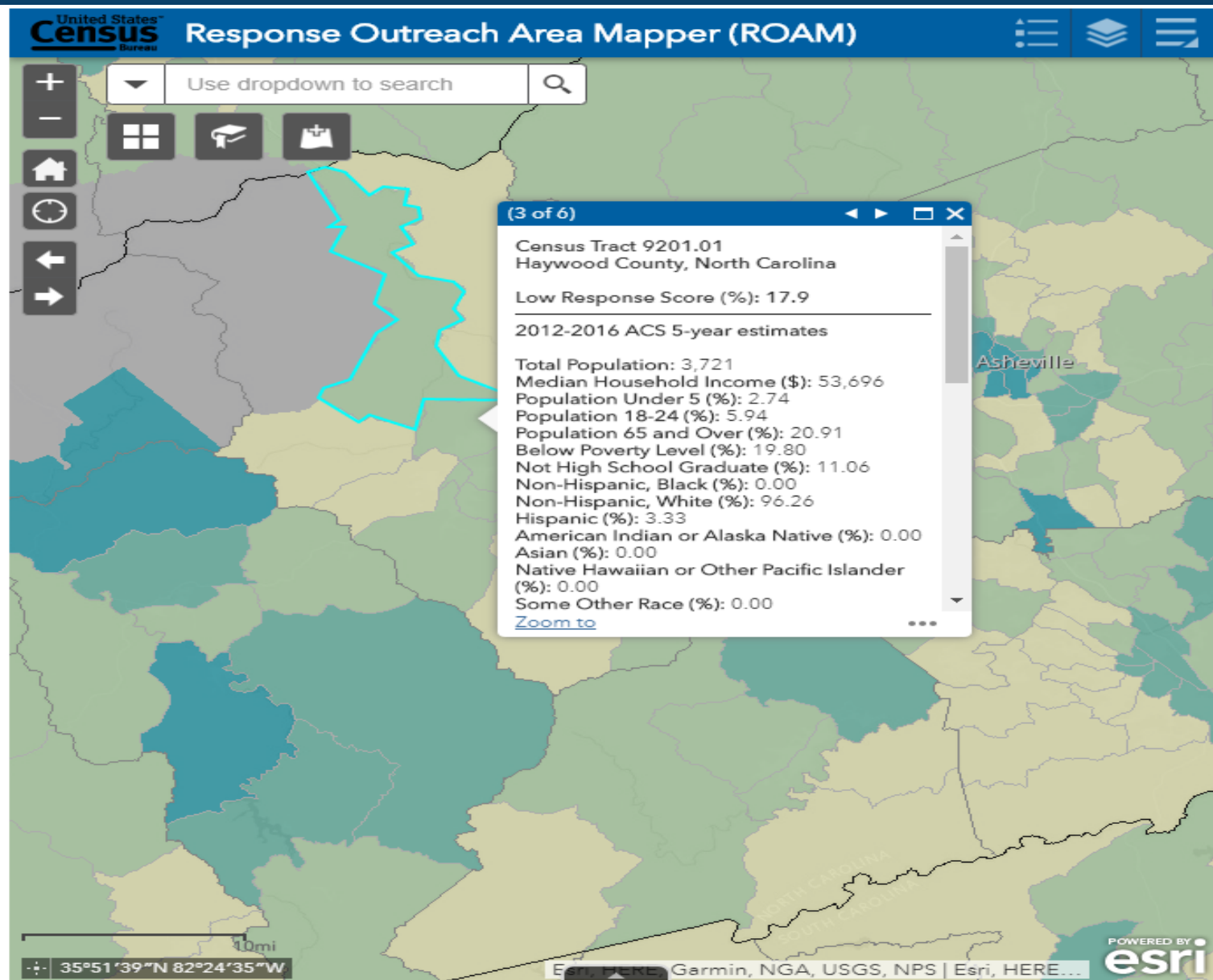
Include Census logo, reference, or content on standard work processes (mailings, documents, listservs, blogs, etc.)

Add Census message at conferences





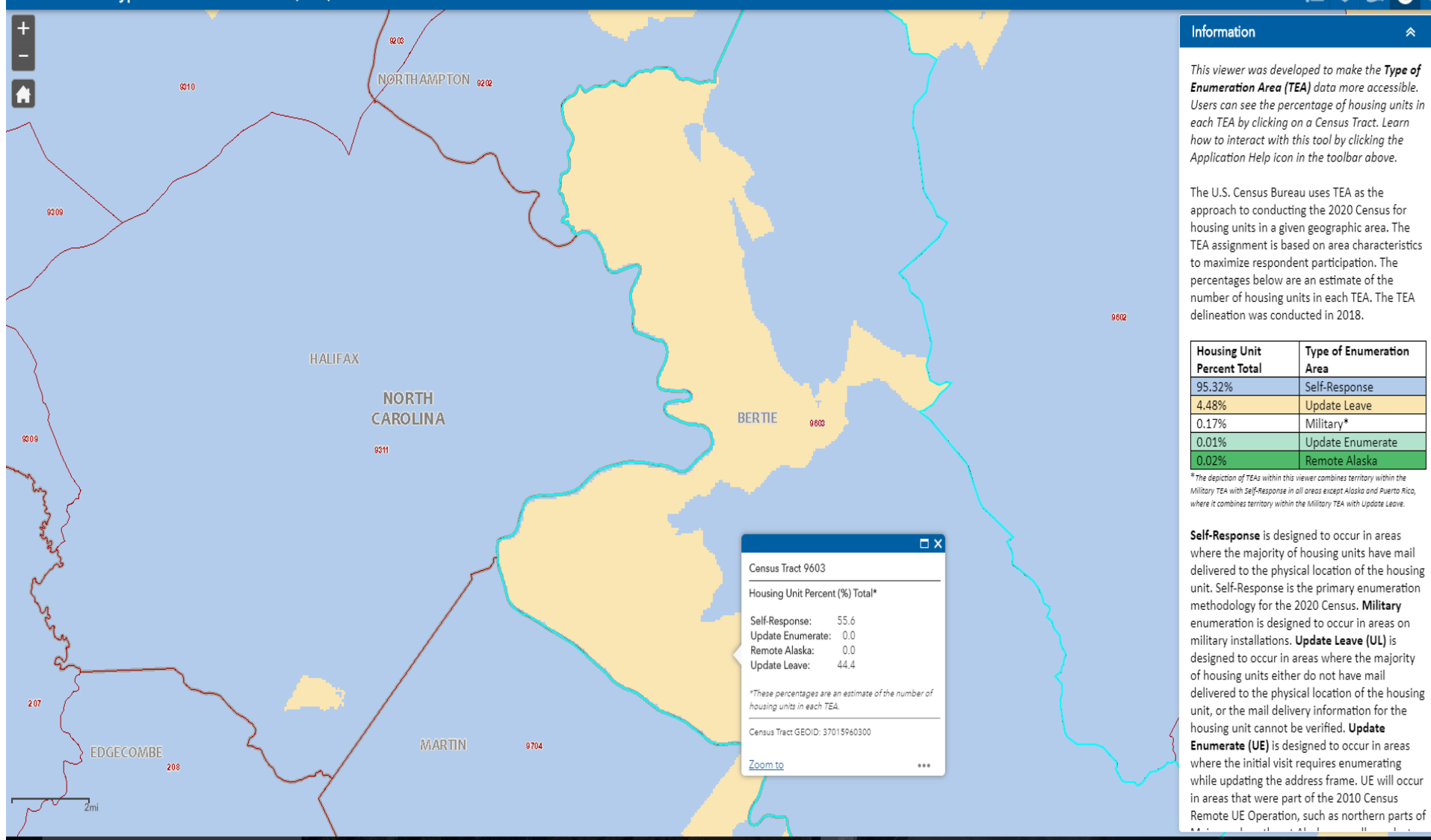
ROAM – <https://www.census.gov/roam>





Type of Enumeration Area (TEA) Viewer

2020 Census: Type of Enumeration Area (TEA) Viewer



Information

This viewer was developed to make the **Type of Enumeration Area (TEA)** data more accessible. Users can see the percentage of housing units in each TEA by clicking on a Census Tract. Learn how to interact with this tool by clicking the Application Help icon in the toolbar above.

The U.S. Census Bureau uses TEA as the approach to conducting the 2020 Census for housing units in a given geographic area. The TEA assignment is based on area characteristics to maximize respondent participation. The percentages below are an estimate of the number of housing units in each TEA. The TEA delineation was conducted in 2018.

Housing Unit Percent Total	Type of Enumeration Area
95.32%	Self-Response
4.48%	Update Leave
0.17%	Military*
0.01%	Update Enumerate
0.02%	Remote Alaska

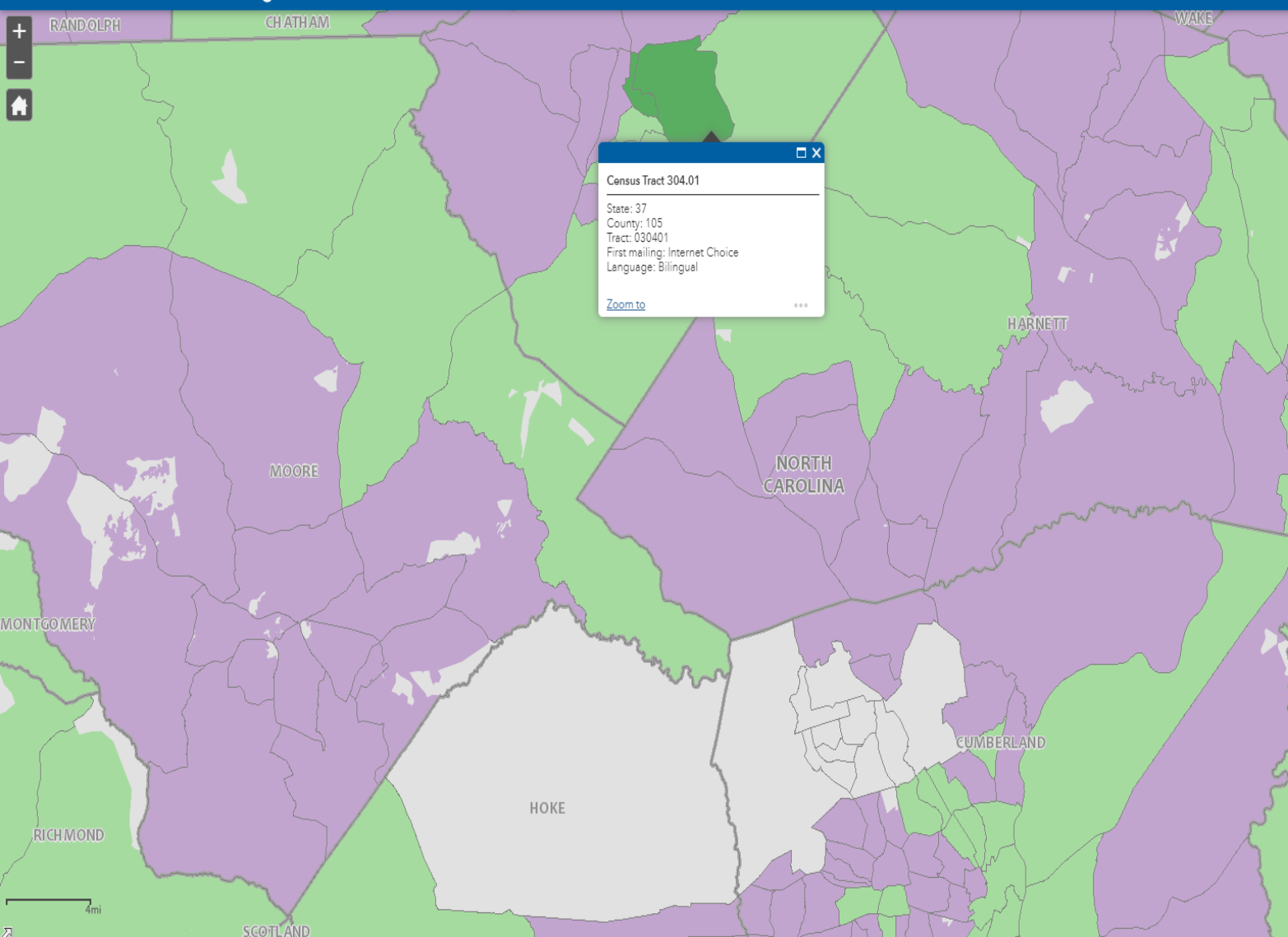
*The depiction of TEAs within this viewer combines territory within the Military TEA with Self-Response in all areas except Alaska and Puerto Rico, where it combines territory within the Military TEA with Update Leave.

Self-Response is designed to occur in areas where the majority of housing units have mail delivered to the physical location of the housing unit. Self-Response is the primary enumeration methodology for the 2020 Census. **Military** enumeration is designed to occur in areas on military installations. **Update Leave (UL)** is designed to occur in areas where the majority of housing units either do not have mail delivered to the physical location of the housing unit, or the mail delivery information for the housing unit cannot be verified. **Update Enumerate (UE)** is designed to occur in areas where the initial visit requires enumerating while updating the address frame. UE will occur in areas that were part of the 2010 Census Remote UE Operation, such as northern parts of



Mail Contact Strategies Viewer

2020 Census: Mail Contact Strategies Viewer



Information

This **2020 Census Mail Contact Strategies** viewer was developed so that communities can plan for the mailings that their area will receive when self-response for the 2020 Census begins. Users can see the mail contact strategy in each Census Tract by clicking on a Census Tract. Learn how to interact with this tool by clicking the Application Help icon in the toolbar above.

In the 2020 Census, about 95 percent of housing units will receive their census invitations in the mail. The U.S. Census Bureau will send up to five mailings, to encourage you to respond online, by mail, or by phone.

- Most areas of the country are likely to respond online, so most housing units will first receive a letter asking you to go online to complete the census questionnaire (these **Internet First** areas are shown in **purple** on the map).
- Areas that are less likely to respond online will receive a paper questionnaire along with their first invitation, and this will include information about how to respond online or by phone (these **Internet Choice** areas are shown in **green**).
- Some areas will receive invitations in **bilingual** Spanish and English (darker shades), while most areas will receive invitations in **English** (lighter shades).

The table below shows an estimate of the percentage of housing units that will receive each contact strategy. Information about the methodology for the mail contact strategy assignments is provided below this table.

Housing Unit Percent Total	Mail Contact Strategy
72.6%	Internet First, English
5.7%	Internet First, Bilingual
18.1%	Internet Choice, English



MAKE NC
COUNT
CENSUS 2020

[Home](#) [Contacts](#)



North Carolina 2020 Census

Make NC Count

The Census is your chance to make sure your community counts. Participating in the Census will help make sure your community gets:

- Fair representation in Congress
- Financial resources for health, schools, transportation, and more
- Information leaders need to help your community plan for the future.



What is the Census?



Differential Privacy

- New privacy strategy that will better protect confidentiality
- Introduces privacy-loss budget (or epsilon) that will decrease data accuracy to protect confidentiality
- Data tables for small population groups or geographies may not be produced ... at least initially



2020 Census Product Summary

Summary of Proposed 2020 Data Products

Proposed 2020 Data Product	Status
Apportionment Product	The current disclosure avoidance system either supports or is being expanded to support these 2020 Census data products
Redistricting File	
Demographic Profiles	
Demographic and Housing Characteristics File (DHC)	
Tables that require complex person/household joins	We continue to research ways to create public data products that include these tables that will meet user needs yet maintain data confidentiality.
Tables that include detailed race and Hispanic Origin groups	
Tables that include data for American Indian and Alaska Native groups	
Congressional District Demographic and Housing Characteristics File	Data in these files are primarily dependent on the production of the files listed above.
Census Briefs	
Population and Housing Tables (CPH-Ts)	
Special Reports	
Public Use Microdata Sample (PUMS) File	We continue to discuss the release of a PUMS file for the 2020 Census.
Summary of Population and Housing Characteristics (CPH-1)	We are proposing not to publish these files in 2020. Data from these products will be available in other files.
Population and Housing Unit Counts Report Series (CPH-2)	



MAKE NC COUNT

C E N S U S 2 0 2 0

Contact

Bob Coats

(984) 236-0687

Bob.Coats@osbm.nc.gov

Governor's Census Liaison,
North Carolina State Data Center
Demographic and Economic Analysis Section
NC Office of State Budget and Management

Question & Answer Session:

Please use the Chat option on the right to ask your questions.

- Please use the Chat option to let us know how many people are at your location.
-

Please visit our website for this presentation, previous presentations and our schedule of future Webinars on exciting topics in today's Mobility solutions and related subjects.

<https://connect.ncdot.gov/business/Transit/Pages/Transit-Lunch-Learn-Series.aspx>

Thank you and please join us for our next Webinar in March. More details to come.