



**NORTH CAROLINA**  
Department of Transportation

# NCDOT's Integrated Mobility Division (IMD)

## Multimodal Updates

November 21, 2024

Connecting people, products and places safely and efficiently with customer focus, accountability and environmental sensitivity to enhance the economy and vitality of North Carolina



## Agenda

- Connect Centralina TDM Plan – Sarah Niess, Centralina Regional Council and Scott Curry, Kittelson & Associates
- Integrated Mobility Division Updates
  - Hurricane Helene Response – Public Transit and Trails
  - NCDOT’s Connected Autonomous Shuttle Supporting Innovation (CASSI) Program – update
  - Grant Programs – Upcoming grant schedule, current planning efforts
  - Miscellaneous Initiatives – Intercity Bus, MEE NC (microtransit), SRTS, Great Trails State Network Update
  - Mobility Hubs – S-Line
  - IMD Prequalification Codes – discipline code changes

IMD  
Webinar  
11.21.24



**CONNECT**  
CENTRALINA

# CONNECT Centralina TDM Plan

A Blueprint for Launching a Regional Transportation Demand Management Program



**Sarah Niess**  
Centralina Regional Council



**Scott Curry**  
Kittelson & Associates

The background features a dark blue color scheme with several stylized, semi-transparent icons. On the left, there is a silhouette of a person walking. In the upper right, a bus is depicted. A large, prominent gear is centered in the background, partially overlapping the text. The text is white and bold, with a slight drop shadow.

# **TDM and Our Region**



# What is Transportation Demand Management?

## TDM programs:

- Influence everyday travel choices to support more sustainable, livable communities
- “seek to change how and when people travel” and “are either focused on increasing mobility options or changing travel behaviors”
- Have proven to be successful and effective in other metropolitan areas around the country



# Why Centralina? Why now?

Key CONNECT Beyond Recommendation

**“DEVELOP A REGIONAL TRANSPORTATION DEMAND MANAGEMENT (TDM) PLAN**

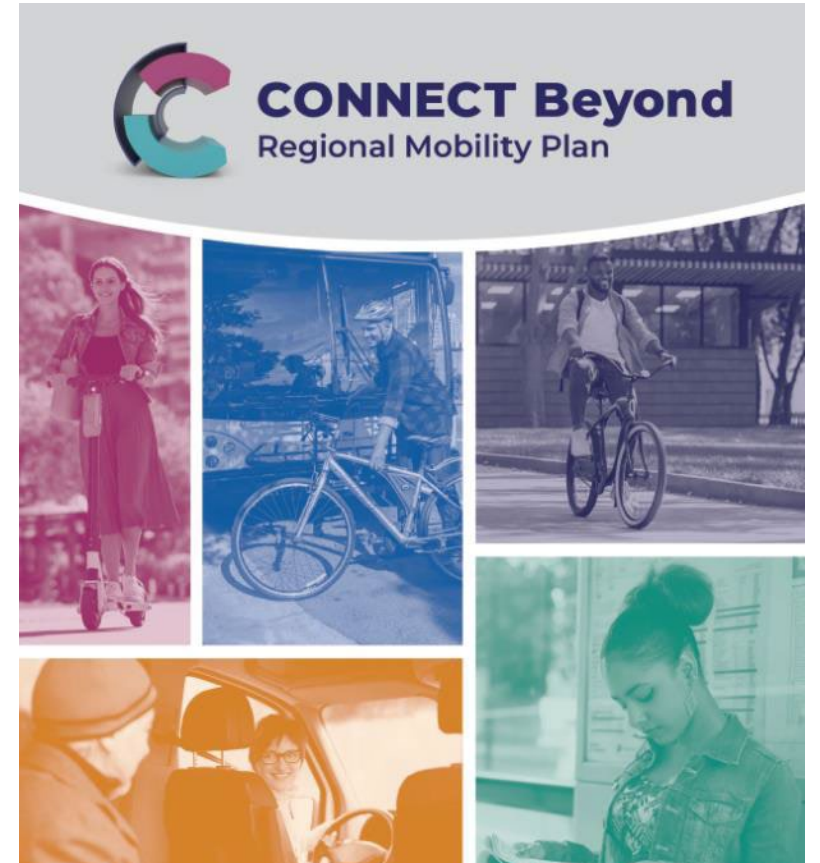
**TIMEFRAME: IMMEDIATE.**

CONNECT|Beyond recommends our regional partners work together to develop a regional Transportation Demand Management (TDM) Plan.”<sup>1</sup>

<sup>1</sup> *CONNECT Beyond Regional Mobility Plan. (pg. 59). Centralina Regional Council & Metropolitan Transit Commission. October 2021.*



Identified Centralina as the lead agency for hosting a regional TDM program

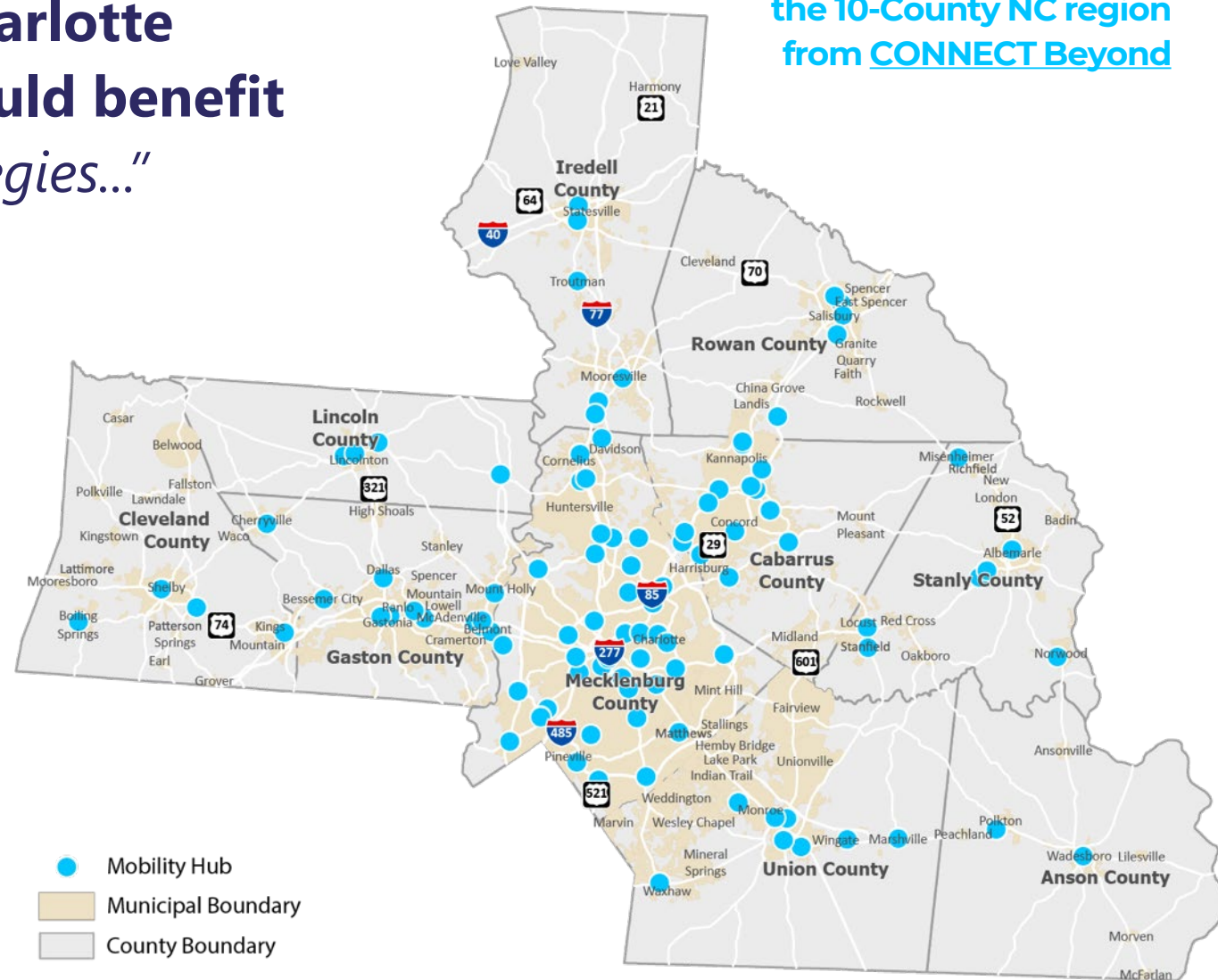


# Why Centralina? Why now?

*"With the largest population in North Carolina and the most significant congestion issues, **the Charlotte metropolitan region could benefit the most from TDM strategies...**"*

North Carolina Dept. of Transportation (NCDOT)  
**Statewide TDM Strategic Plan Update | 2018**

**Proposed Mobility Hubs in the 10-County NC region from [CONNECT Beyond](#)**





# Our Process

built on the foundation of CONNECT Beyond →



Integrated Mobility Division  
N.C. DEPARTMENT OF TRANSPORTATION





# TDM Plan and Program Development Recap

**3** TDM Focus Groups

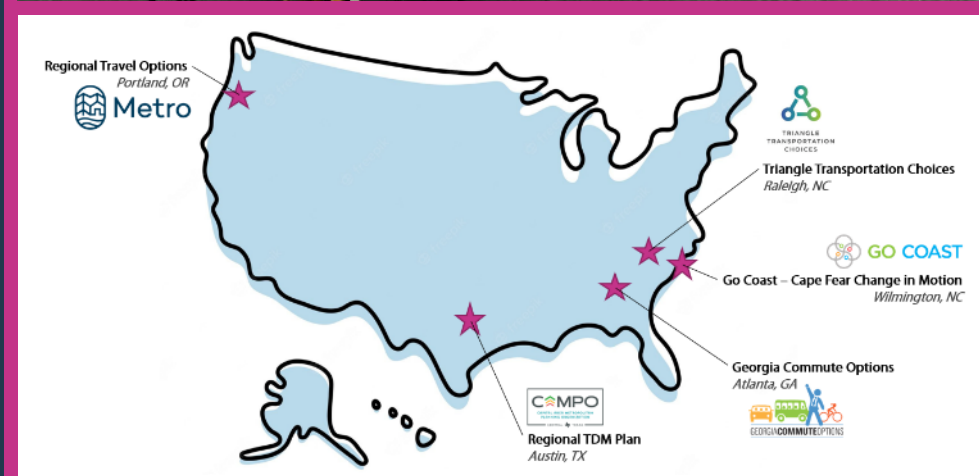
**5** NCDOT Coordination Meetings

**6** Stakeholder Conversations

**5** Interviews / Case Studies of Peer Programs

**7** Steering Committee Meetings

**13** Interagency Project Management Team Meetings





# CONNECT Centralina TDM Program Vision Statement

**The greater Charlotte region is a place where**



**sustainable and affordable travel options**

**are accessible, known, and convenient for all.**





**Building a TDM  
Program for the  
Centralina Region**

# We started with lots of big questions.



What are our goals and aspirations?



How “ready” is our region for a TDM program?



What can we learn from other places?



Where are the places in our region that have the greatest propensity to shift away from single-occupancy vehicle (SOV) use?



How will we influence travel behavior?



How will we support an ongoing regional TDM program?



How will we engage diverse audiences?



How will we measure success?



What are the key steps for launching and implementing a regional TDM program?



We built our plan around  
the answers we found.



What are our goals  
and aspirations?

**Vision Statement,  
Guiding Principles, Goals**



How “ready” is our region for a  
TDM program?

**Regional TDM Assessment**



What can we learn from  
other places?

**Case Studies**



Where are the places in our region  
that have the greatest propensity to  
shift away from single-occupancy  
vehicle (SOV) use?

**Identifying TDM “Hot Spots”**



How will we influence travel  
behavior?

**TDM Strategies Menu**



How will we support an ongoing  
regional TDM program?

**Program Management & Funding  
Recommendations**



How will we engage diverse  
audiences?

**Branding & Communications  
Framework**



How will we measure success?

**Performance Metrics**



What are the key steps for  
launching and implementing a  
regional TDM program?

**Implementation Action Plan**

# Case Studies

**Regional Travel Options**

*Portland, OR*



**Metro**



TRIANGLE  
TRANSPORTATION  
CHOICES

**Triangle  
Transportation  
Choices**

*Raleigh, NC*



**GO COAST**

**Go Coast**

*Wilmington, NC*



**Get There ATX**

*Austin, TX*



**Georgia Commute Options**

*Atlanta, GA*

# 1. Introduction

*What is TDM? + Our Planning Process*

# 2. Regional TDM Assessment

*How "ready" is our region for a TDM program?*

# 3. TDM Strategies

*How will we influence travel behavior?*

# 4. Performance Metrics

*How will we measure success?*

# 5. Program Management

*How will we support an ongoing regional TDM program?*

# 6. Implementation Action Plan

*What are the key steps for program launch and implementation?*



# Regional TDM Assessment

## Key Takeaways



1. Driving is the easiest and most convenient option in our region. It's not close.



5. Rural areas are the hardest to reach. TDM strategies here will require creativity and strategic partnerships.



2. Current TDM efforts lack cohesion and coverage.



6. TDM addresses diverse trip purposes and evolving travel behaviors. It's about more than work commutes.



3. Our multi-centric region lends itself well to district-scaled strategies.



7. Public transit is evolving (microtransit, micromobility, etc.). TDM should help people understand options and enhance coordination among service providers.



4. The next frontier in affordable living is access to high-quality, non-SOV transportation choices.



## Education & Marketing



### **Seattle, WA**

Providing workplace travel planning resources to employers

## Regional Partnerships & Coordination



### **Raleigh, NC**

Providing grants to non-profits that offer alternative transportation services

## Incentives & Facilitation



### **Denver, CO**

Offering E-bike subsidies / vouchers to residents

## Technical Assistance



### **National Complete Streets Coalition, Smart Growth America, NACTO**

Providing Complete Streets policy and design guidance to local governments

## Education & Marketing



### Seattle, WA

Providing workplace travel planning resources to employers

## Regional Partnerships & Coordination



### Raleigh, NC

Providing grants to non-profits that offer alternative transportation services

## Incentives & Facilitation



### Denver, CO

Offering E-bike subsidies / vouchers to residents

## Technical Assistance



### National Complete Streets Coalition, Smart Growth America, NACTO

Providing Complete Streets policy and design guidance to local governments

# Transportation Management Associations (TMAs)



PERIMETER  
CONNECTS



**TMAs are member-controlled NPOs focused on managing movement of goods and people in a particular area:**

- Groups of employers
- New developments
- Property owners
- Major campuses (education, healthcare, airports, employment/industrial)



**Typical TMA Strategies:**

- District shuttles (first/last mile)
- Sustainable commute incentives
- District-level parking management
- Ride matching services

# High Priority TDM Strategies

1.  Launch a Regional Marketing Campaign

2.  Pursue Dedicated Funding & Grants

3.  Form a Regional TDM Advisory Committee

4.  Develop a Travel Options/TDM Program Website

5.  Promote Carpool Matching

6.  Promote Vanpool

7.  Support Expansion of the Emergency Ride Home Program

8.  Support the Development of Transportation Management Associations (TMA's)

9.  Provide Workplace Travel Resources & Planning



# Implementation Action Plan

What are the key steps for program launch and implementation?

## **Program Launch and Transition Year** (FY 2024-2025)

Focus: Leverage existing staff resources to launch the program and secure additional funding.

## **Year 1** (FY 2025-2026)

Focus: Build awareness of the TDM program and establish key partners.

## **Year 2** (FY 2026-2027)

Focus: Build internal capacity and amplify your message.

## **Year 3** (FY 2027-2028)

Focus: Target worksites and broaden external partnerships.

## **Year 4+** (FY 2028-2029 and beyond)

Focus: Expand the program to reach more people and places.

The background features a dark blue color scheme with several stylized, semi-transparent icons. On the left, there is a silhouette of a person walking. In the upper right, a bus is depicted. A large, prominent gear is centered in the background, partially overlapping the text. The text itself is white and bold, with a slight drop shadow.

# **Sharing Our Learnings and What's Next**

# Plan Development Template

## Plan Development Standards for:

- Guideline for TDM Plan Content:
  - Assessment Analysis
  - TDM Strategies / Performance Metrics
  - Program Management
- Outline of Process, including Stakeholder Engagement and Schedule
- Project Manager Checklist

*NCDOT's TDM Grant funds available for new/updated TDM plan development*



# FY25 – Transition from Plan to Program

## Key Activities

- Final plan adopted by Centralina’s Board (Sept. 2024)
- Develop **Advisory Committee** for Program Launch/Year 1 (*Fall*)
- Seek **funding** opportunities for program, including hiring of TDM program manager (*on-going*)
- Develop marketing and **educational materials** to promote mobility options, including Share the Ride (*on-going, pilot project*)
- Seek private and public **partnerships** for implementing TDM strategies of plan



**CONNECT  
CENTRALINA**





**CONNECT  
CENTRALINA**

# Thank You!



**Sarah Niess**  
Centralina Regional Council  
[SNiess@centralina.org](mailto:SNiess@centralina.org)



**Scott Curry**  
Kittelson & Associates  
[Scurry@kittelson.com](mailto:Scurry@kittelson.com)

# Helene Response – Public Transit and Trails

---



# Helene Impacts

- Alleghany County
- AppalCART
- Ashe County
- Avery County
- Cleveland County
- Gaston County
- Lincoln County
- Madison County
- Mitchell County
- McDowell County
- Rutherford County
- Wilkes County
- Yancey County
- Western Piedmont Regional Transit Authority
- Southwest -Jennifer
- Asheville Rides Transit
- Buncombe County
- Clay County
- Cherokee County
- EBCI
- Graham County
- Swain County
- Haywood County
- Jackson County
- Macon County
- Polk County
- Transylvania County
- WNCSource Community Services (Henderson County)
- WNCSource Community Services (Hendersonville)

28 Agencies affected

- 26 Back to Normal Service
- 2 Limited Service



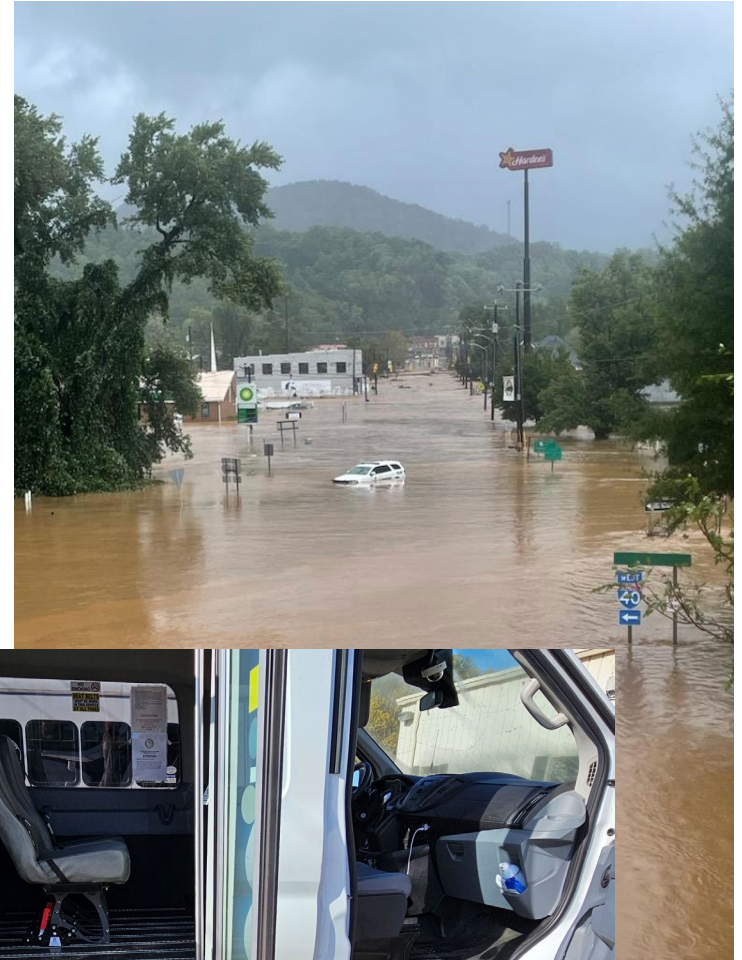
Source: U.S. Census; FEMA; Disaster declaration as of Sept. 28, 2024

# Helene Impacts

## Public Transit

\$1.3 million in preliminary Damages

- 3 – Agencies Displaces
- 8 – Totaled vehicles





# Helene Response

## Agency Response

- 790 Evacuation Trips
- >2,000 evacuations

Delivered/Distributed Supplies

Delivered/Distributed Hot  
Meals





# Helene Response

## IMD Response

Daily calls with impacted agencies

Facilitating supply/vehicle drops/swaps

Acquiring \$1million in FEMA funding for emergency operation

Facilitating new routing and services for affected communities



# Helene Impacts

## Trails

NCDOT-IMD is coordinating with NCDCNR and the Great Trails State Coalition to survey the damage to trails due to Helene

IMD will helping facilitate recovery efforts by:

- Coordinating volunteer opportunities
- Assisting in the identification of funding sources to maintain and rebuild damaged trails.

Impact Survey

<https://www.surveymonkey.com/r/GDHFCFZ>





Integrated Mobility Division  
N.C. DEPARTMENT OF TRANSPORTATION



# NCDOT's Connected Autonomous Shuttle Supporting Innovation (CASSI) Program

---



# NCDOT's Innovation Process Evaluates Emerging Technologies

The goal is to rigorously assess emerging technology to determine if it **meets transportation needs** and **can be integrated and scaled** as an option in the existing transportation system.

Research, Testing,  
& Evaluation

*Studies, demonstrations, and pilots to investigate and test out new technologies through small-scale projects that evaluate their capabilities, limitations, and how well they work compared to existing solutions.*

Best Practices &  
Lessons Learned

*Reports, presentations, and summaries that document, synthesize, and communicate findings.*

Mainstream  
Adoption &  
Institutionalization

*Large-scale implementations based on the documented usefulness and benefits of proven technologies.*



Integrated Mobility Division  
N.C. DEPARTMENT OF TRANSPORTATION

# CASSI Advances Connected and Automated Vehicles in NC

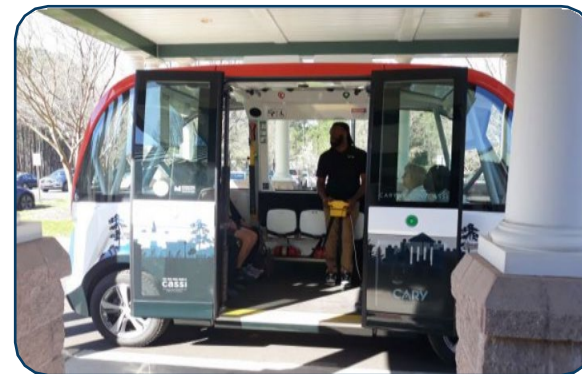
NCDOT's **Connected Autonomous Shuttle Supporting Innovation (CASSI)** is a program (not a product) that **demonstrates the capability of automated vehicles** with connected vehicle features to prepare **for the future of mobility and enhance public transportation** services.



CASSI evaluates how automated vehicles can best be used by riders with different needs and in different environments.

Examples include:

- Transit applications such as first mile/last mile solutions
- Connected vehicle infrastructure





# CASSI in Cary's Bond Park

13-week pilot from March 6-June 2, 2023

## Special features of the project included:

- ❖ Shared stop with GoCary Routes 4 and 8 at the Cary Senior Center
- ❖ Temporary traffic signal that demonstrated the shuttle's vehicle-to-infrastructure communication capabilities



# CASSI at UNC Charlotte

23-week pilot from July 12-December 21, 2023

## Compared to previous pilots under the CASSI program:

- ❖ Most signals (four total)
- ❖ Longest route (2.2 miles)
- ❖ Longest duration (6 months)
- ❖ Most complicated mixed traffic environment



# CASSI Program – Final Reports and Datasets



<https://www.ncdot.gov/CASSI>



## Completed Projects

### October 2023



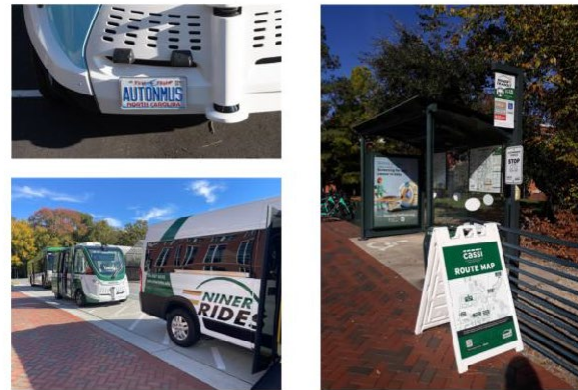
Connected Autonomous Shuttle Supporting Innovation  
(CASSI) in Cary's Bond Park

Final Report

October 2023



### July 2024



Connected Autonomous Shuttle Supporting Innovation  
(CASSI) at UNC Charlotte

Final Report

July 2024



### Winter 2024\*

#### UNC Charlotte Autonomous Shuttle Pilot Study

Srinivas S. Pulugurtha, Ph.D., P.E., F.ASCE  
Amirhossein Ghasemi, Ph.D.  
Lei Zhu, Ph.D.  
Srinivas Akella, Ph.D.  
Suzanne Leland, Ph.D.



**\*Separate research project and  
technical report led by UNC  
Charlotte and funded by NCDOT**



# CASSI is Evolving to Include Latest Technological Advancements



CASSI will consider **next generation novel-design, low-speed automated shuttles** for future pilots as the technology matures.

CASSI is exploring how **Automated Driving System (ADS)-equipped conventional vehicles** can be tested and integrated into high quality, on-demand transit services.

## Novel-design, low-speed automated vehicles



(3) Completed Projects  
2020-2021



NPS Report



USDOT Report



(2) Completed Projects  
2023



NCDOT Webpage

## Automated Driving System (ADS)-equipped conventional vehicles



## Connected, Rural, Equitable, and Autonomous Transportation for Everyone (CREATE)

FY 2023 USDOT Advanced Transportation Technology and Innovation Program Grant Application



Grant Application Information

## Connected Autonomous Vehicle (CAV) Testbed



NCDOT is supporting N.C. A&T State University to develop **shared autonomous vehicles, an innovative rural test track, and an automated shuttle pilot** between the university and downtown Greensboro.



Autonomy at A&T



# Grant Programs

---

## 2025 (Anticipated) Grant Timelines

### Recurring grant programs

	<b>Bicycle Helmet Initiative</b> <a href="#">(link)</a>	<b>Multimodal Planning Grant</b> <a href="#">(link)</a>	<b>TDM Grant</b> <a href="#">(link)</a>
Grant Call Open	January	February	February
Grant Call Deadline	February	March/April	March
Grant Award Notification	March	June	April/May

## Multimodal Planning Grants - Call for Projects FY2026

Call for applications January 2025 – March 2025

- Bicycle, Pedestrian, or Combined (Bike + Ped) Plan
- Project Acceleration Plans for small towns (< 10,000 population)
- Multimodal Network Plans for LGA's with existing fixed-route
- **Local Match Required** (typically 10% - 50%) depending on population size
- Live informational webinar TBA February 2025
- See [website](#) for application details and eligibility requirements

## Active Projects

### Local and Regional Plans and Studies

#### Multimodal Plans

- Angier
- Bogue, Cape Carteret, Cedar Point, Peletier
- Carolina Beach
- Fayetteville
- Mars Hill
- Murphy
- Raleigh
- Roxboro
- Selma
- Sims
- Woodfin

#### Regional Transit Plans

- Land of Sky Regional Transit Plan
- High Country Regional Transit Plan

#### Microtransit Feasibility Studies

- Onslow United Transit
- City of Greensboro / Greensboro Transit Agency (GTA)
- Robeson County / South East Area Transit System
- Davidson County Transportation
  - Cabarrus County

[Link to Program Webpage](#)

## **Upcoming Multimodal Plans**

**Contracting Phase, Kickoff in January 2025**

Alexander County ~ Bicycle Plan

Town of Oak Island ~ Bicycle Plan

Town of Southport ~ Bike-Ped Acceleration Plan

Town of Erwin ~ Bike-Ped Acceleration Plan

Town of Mount Gilead ~ Bicycle –Pedestrian Acceleration Plan

City of Salisbury ~ Multimodal Network Plan

Town of Pilot Mountain ~ Bike-Ped Comprehensive Plan

[Link to Program Webpage](#)



# Miscellaneous Initiatives

Intercity Bus

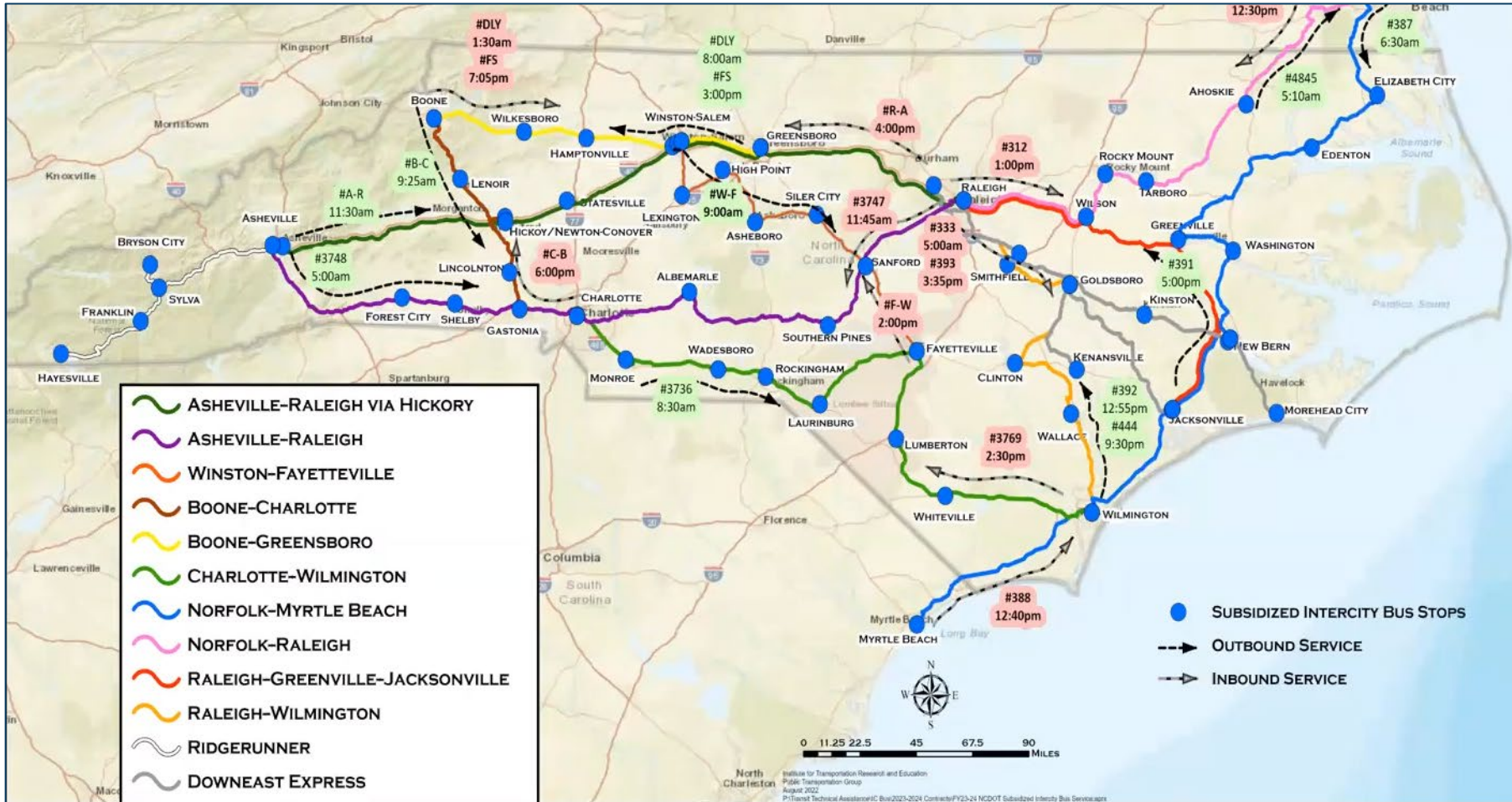
MEE NC

SRTS

GTS Network Update



# Intercity Bus in North Carolina



# Intercity Bus in North Carolina

## Service Resumes in Elizabeth City!

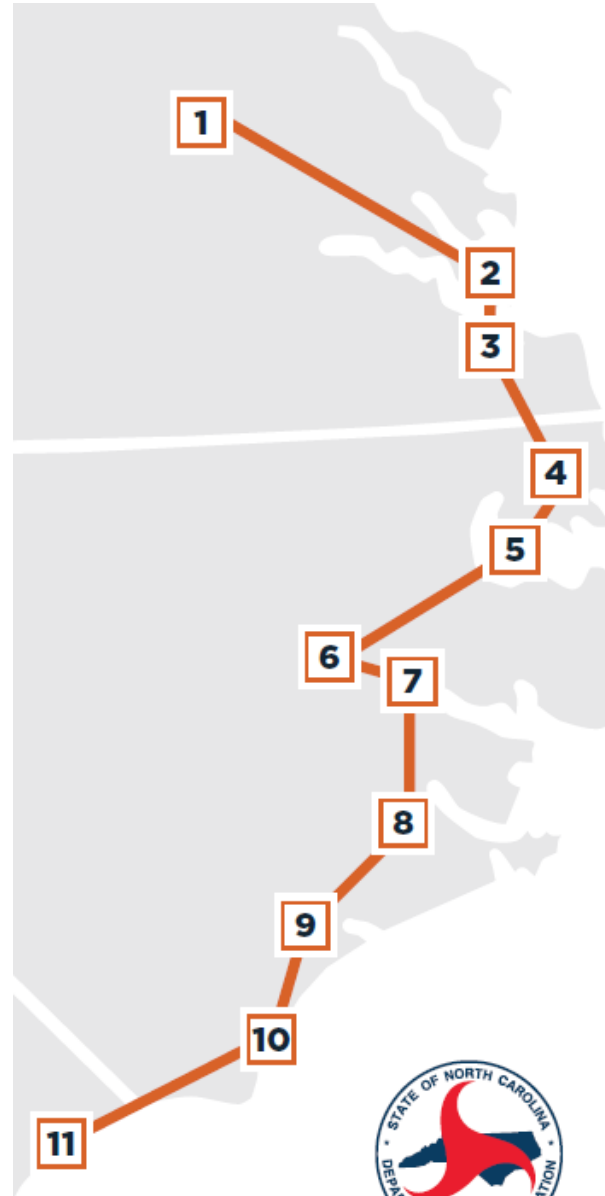
- o NCDOT IMD partnered with ESCU to provide a stop on campus for greater accessibility for University students
- o Service resumed November 20<sup>th</sup>
- o Goal to provide better connectivity to college students
- o Locate bus stops closer to downtown areas



# Intercity Bus in North Carolina

## Coastal Plains Connector

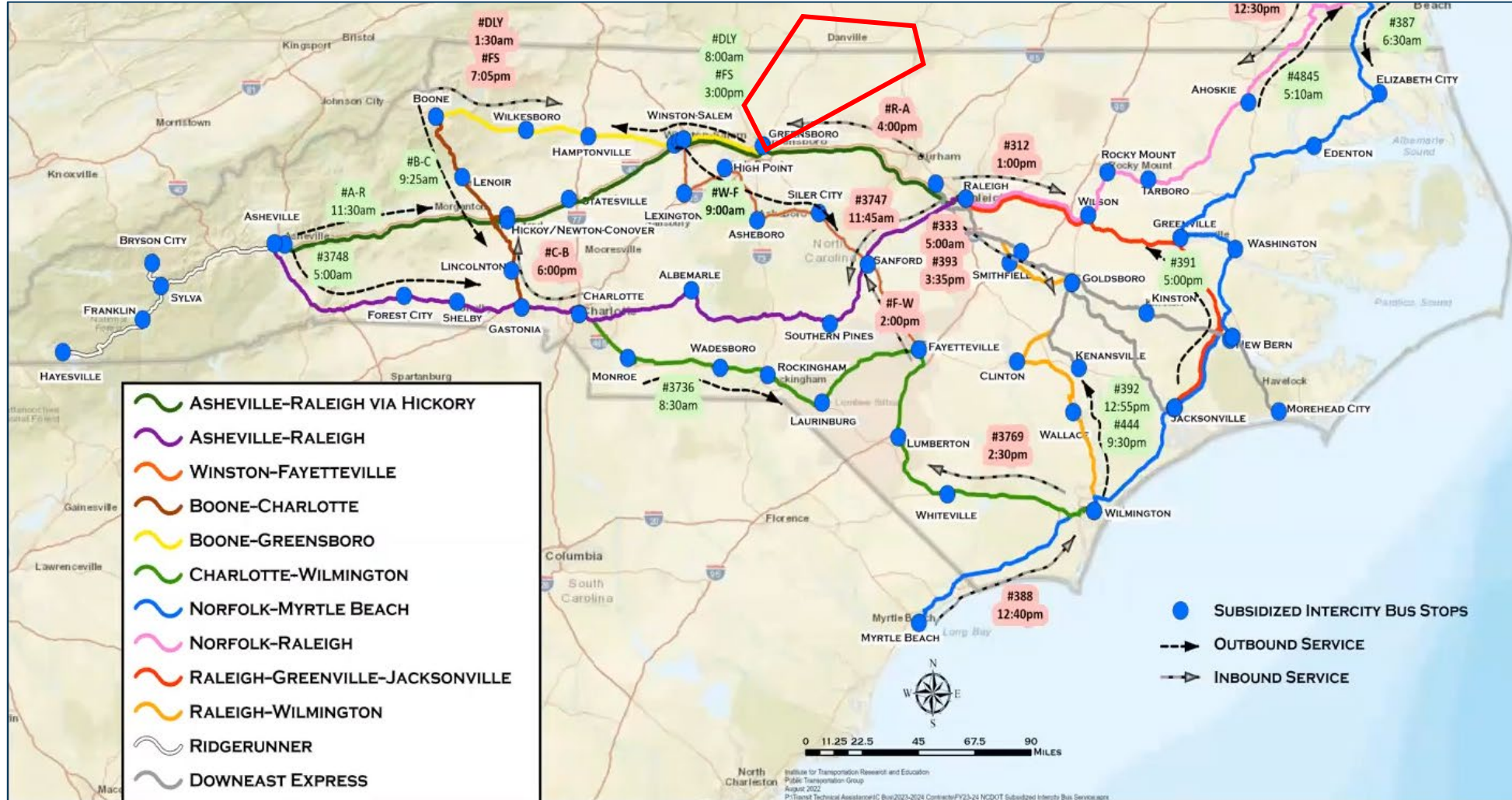
1. Richmond
2. Hampton
3. Norfolk
4. Elizabeth City
5. Edenton
6. Washington
7. Greenville
8. New Bern
9. Jacksonville
10. Wilmington
11. Myrtle Beach





# Intercity Bus in North Carolina

## New Route for Connectivity for Northern NC Counties & Into Virginia



# Intercity Bus in North Carolina

## New Route for Connectivity for Northern NC Counties & Into Virginia

- Coordinating with Virginia Breeze to connect to 2 routes in Danville, VA
- Service to be provided by Sunway Charters
- Service anticipated to start January 1, 2025
- Fares range from \$4-\$12





# Intercity Bus in North Carolina

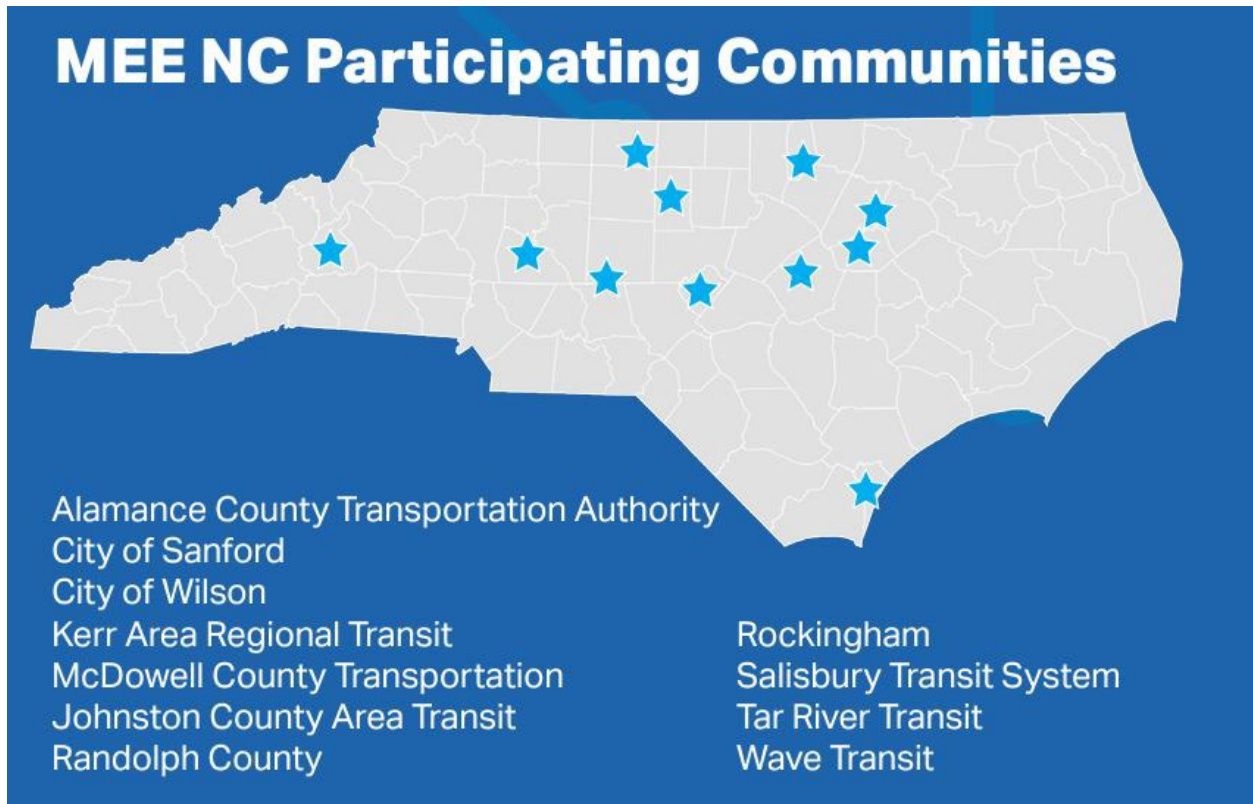
## Other Updates

- System-wide analysis to serve unmet transportation needs
- Your area is most likely served by intercity bus - be part of the conversation!
- Stakeholder survey to come out December/January
- We are always taking comments and suggestions for route and stop improvements
- For questions or to coordinate, email Hart Evans at [jhevans1@ncdot.gov](mailto:jhevans1@ncdot.gov)



# Mobility for Everyone, Everywhere in North Carolina (MEE NC)

## Program Overview



- \$10.4 Million federal grant through Rural Surface Transportation Program to initiate and enhance microtransit in 11 different with 50% NCDOT match for a total of over \$21M.
- 4 Communities receiving funding for turnkey microtransit services
- 7 Communities receiving software and operating funding
- Request for Proposals are posted for Salisbury Transit System and all 7 Software Communities.

# Mobility for Everyone, Everywhere in North Carolina (MEE NC)

## Next Steps

- Selection of vendor for turnkey microtransit service for Salisbury.
- Selection of software vendors available to the transit systems receiving microtransit software funding.
- Preparation of a Request for Proposal (RFP) for turnkey microtransit service providers for WAVE, Wilson, and City of Sanford.
- Contracting and implementation of services.





## SRTS Non-Infrastructure Program

WALK, BIKE, & ROLL EVENTS - October 2, 2024

The Safe Routes Partnership Walk, Ride, & Roll Series aims to increase awareness and skills while inciting action to improve safety around schools for Safe Routes to School programs.

North Carolina ranked 15 out 50 States!



(Left) Town of Chapel Hill at Estes Hills Elementary and (Right) Lead Mine Elementary School Walk, Bike, & Roll to School Day



## SRTS Non-Infrastructure Program

National Safe Routes to School Conference, Fort Collins, Colorado - October 22 – 24

Some of the workshops that were presented:

- Beyond the Eye Roll: Creating Inspiring High School Programs that Students Want and Need
- Vision Zero & SRTS
- E-Bikes
- Walk & Wheel Skills Hub



# SRTS Non-Infrastructure Program

Ruby Bridges Walk to School Day - November 14, 2024



## A Walk to Inspire Positive Change

On November 14, **our** Safe Routes to School staff partnered with Northside Elementary to celebrate Ruby Bridges Walk to School Day. We celebrate Ruby's courageous and historic act of integrating an all-white elementary school in New Orleans by encouraging students to walk to school and engage in a day of dialogue about activism, anti-racism, and anti-bullying. The goal is to inspire kids to make positive changes in their school and community.

- Ruby Bridges Walk to School Day honors the living legacy of civil rights activist Ruby Bridges. Every November 14th, schools organize Ruby Bridges Walk to School Day activities to promote meaningful dialogue on activism, anti-racism, and anti-bullying.
- Town of Chapel had attendance of 100 people – students, families, school staff and some neighborhood folks.

## Great Trails State Plan Network Update

- Annual Update to ensure the GTSP Network remains relevant and up-to-date
- Looking for updates based on planning level documents, studies, public input, or other relevant documentation
- Updates to be submitted via SmartSheets  
<https://app.smartsheet.com/b/form/cbea7b1b145b4998ad45a02e083a7cae>
- Short 5-question survey if you do have an update
- Review the Great Trails State Network @ [NCDOT: Integrated Mobility Division - Great Trails State Plan](#)
- Submission deadline **extended** to **December 1<sup>st</sup>**
- Email Hart Evans at [jhevans1@ncdot.gov](mailto:jhevans1@ncdot.gov) for any questions



# Mobility Hubs

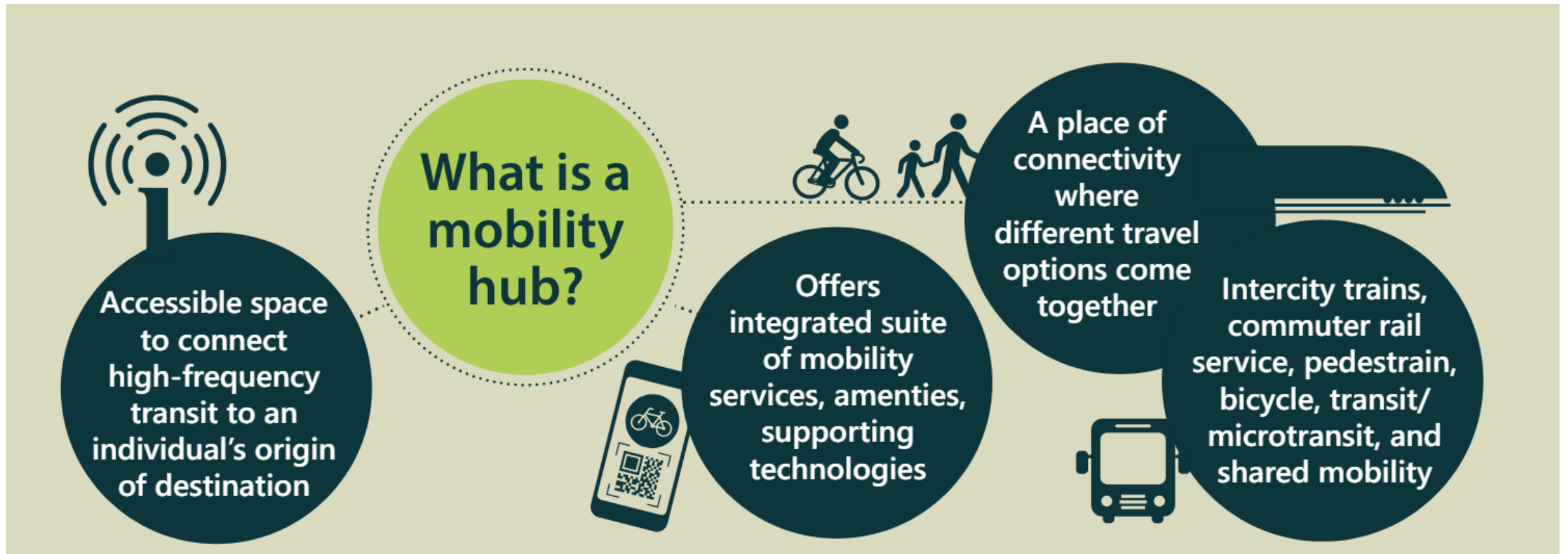
---





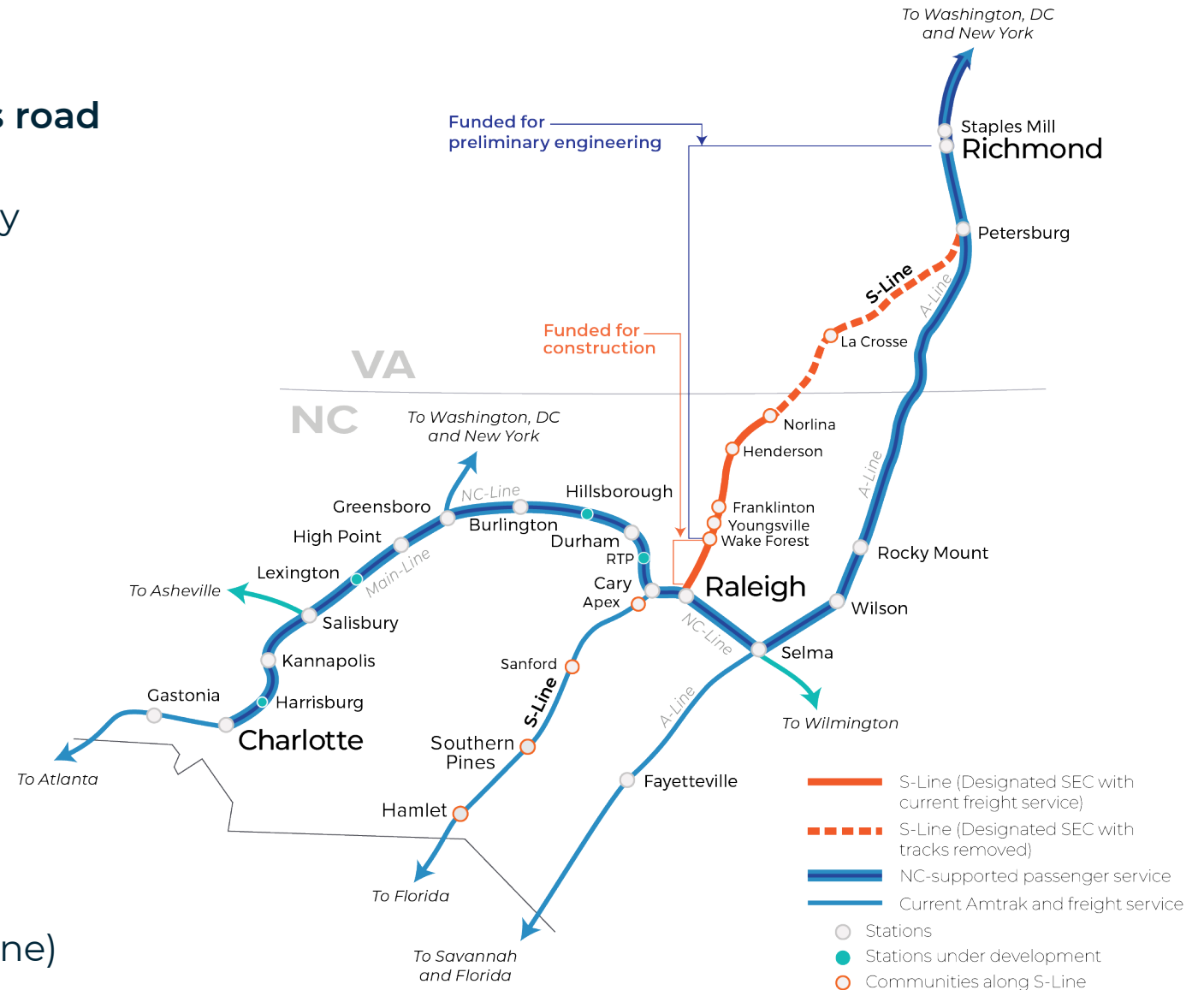
# What is a Mobility Hub?

*A place of connectivity with regional and local multimodal transportation options, offering integrated facilities, amenities, technologies, and services.*



# S-Line: Raleigh to Richmond

- ✓ NEPA Complete – 162 miles rail / 82 miles road
- ✓ (FY '20) \$47.5M FRA CRISI grant
  - NC S-Line corridor acquisition underway
- ✓ (FY '21) \$57.9M FRA CRISI grant
  - Land surveying, prelim. engineering (Raleigh to Richmond)
- ✓ \$900K FTA TOD Study grant
  - ✓ TOD Study (complete)
- ✓ \$3.4M RAISE grant
  - Mobility Hub Plans underway
- ✓ (FY '22-23) \$1.09 Billion – FSP grant
  - Engineering, ROW, and construction (Raleigh to Wake Forest)
  - Obligation in progress by FRA
- ✓ Corridor ID grant \$500,000
  - Service Development Planning (Charlotte to DC Corridor including S-Line)
  - Step 1 (scope/schedule/budget) in progress



# SLINE

## Mobility Hub RAISE Progress

## Planned Date of Rail Service

## Funding

 = Funded
  = Not Funded
  = Not Identified

Feasibility  
 Preliminary Engineering  
 NEPA  
 Final Design  
 Construction

Rail Infrastructure and Service

Mobility Hub

NORLINA



Funding Dependent



HENDERSON



Funding Dependent



FRANKLINTON



Funding Dependent



YOUNGSVILLE



Funding Dependent



WAKE FOREST



2030

Funded



APEX



Existing rail but no current stop



SANFORD



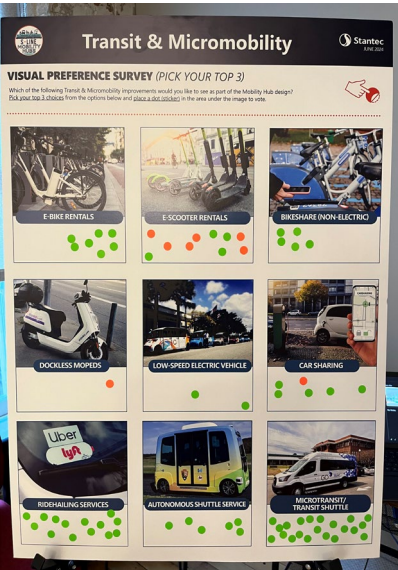
Existing rail but no current stop





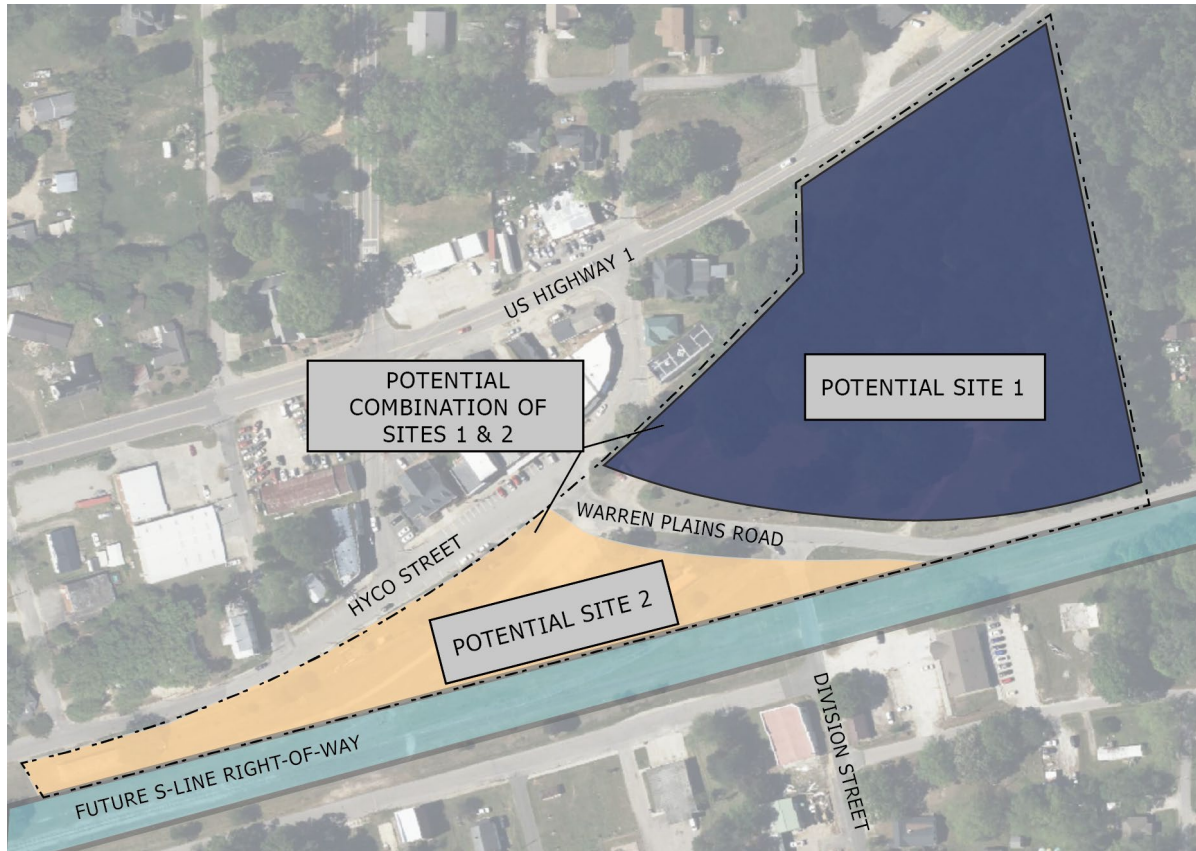


# Mobility Hub Site Visits and Public Outreach



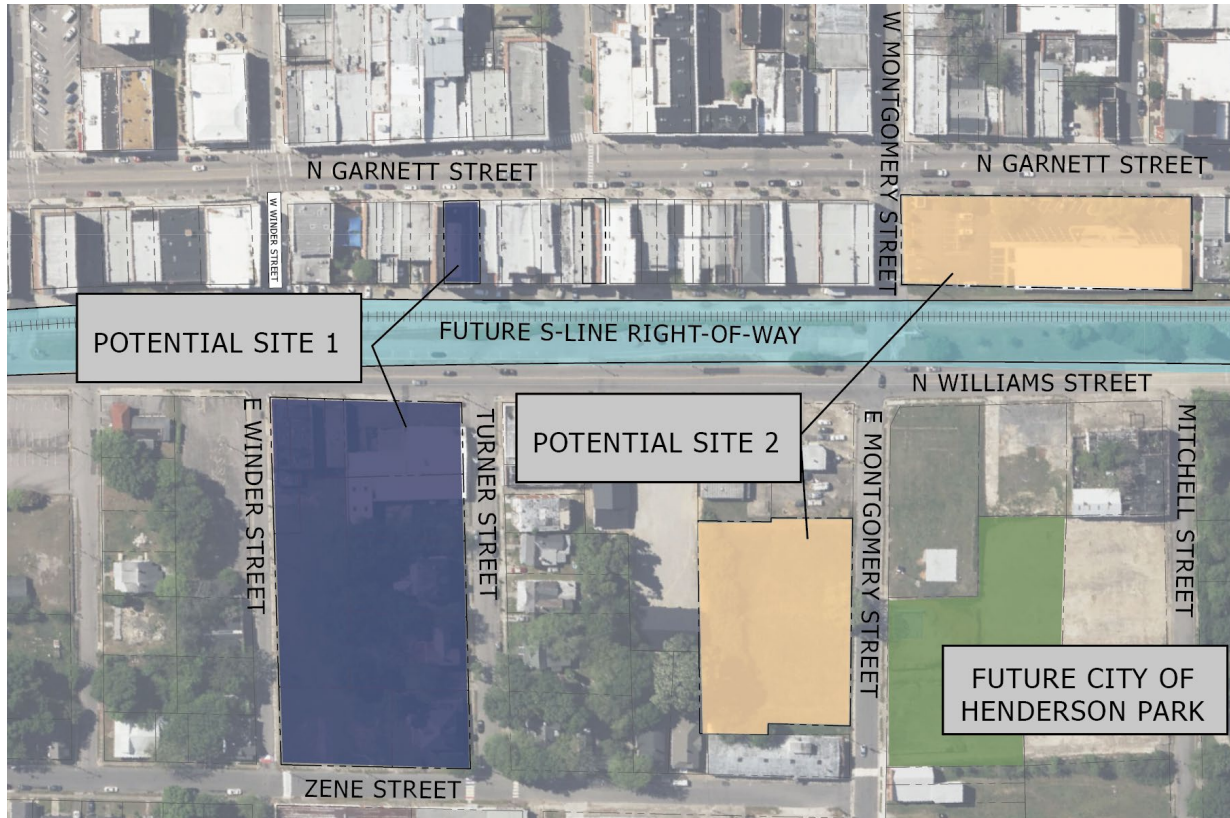


## Norlina Mobility Hub



- Potential Site 2 Selected
- Community Design Workshop held October 28<sup>th</sup> to October 30<sup>th</sup>
- Next Steps
  - Prepare potential site layouts
  - Draft Feasibility Report submitted by end of year

# Henderson Mobility Hub



- Two potential sites – First National Bank building and Garnett Street Station
- Presenting to Land Use Committee today
- Next Steps
  - Work with Henderson leadership to get a site selected.
  - Community design workshop for additional feedback.



# Franklinton Mobility Hub

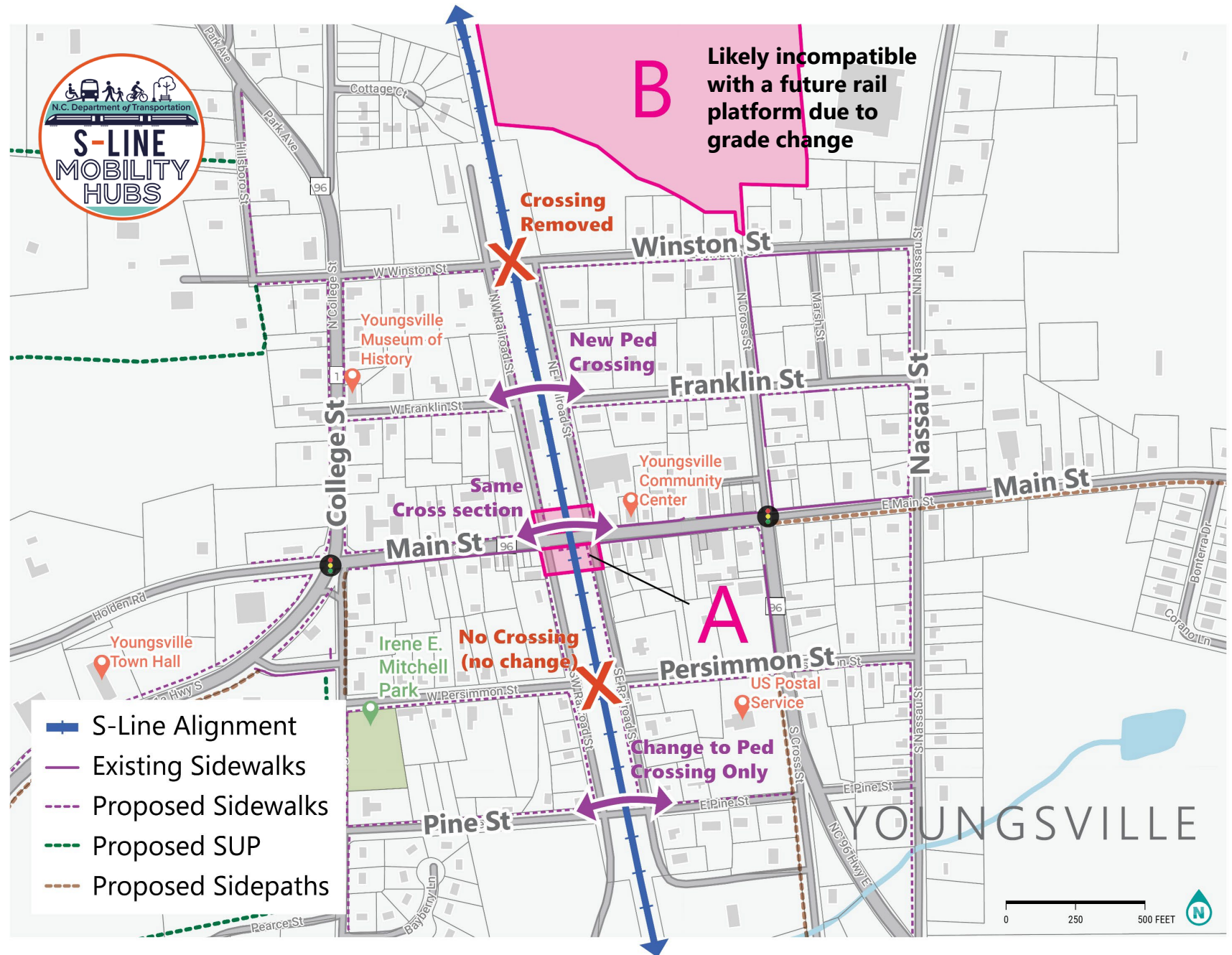
- Three potential sites and layouts.
- Considerations for parking and phasing approach in Franklinton due to the future closure of Mason Street.
- Focus on enhancing opportunities for businesses.
- Next Steps
  - Work with Franklinton leadership to select a site configuration.
  - Prepare the draft feasibility study for review.





# Youngsville Mobility Hub

- Site A is selected due to Site B being incompatible with rail.
- Rail will be in a trench going through Youngsville.
- Next steps:
  - Develop site concept plan once space confirmed
  - Prepare draft feasibility study





# Wake Forest Mobility Hub

## Next Steps

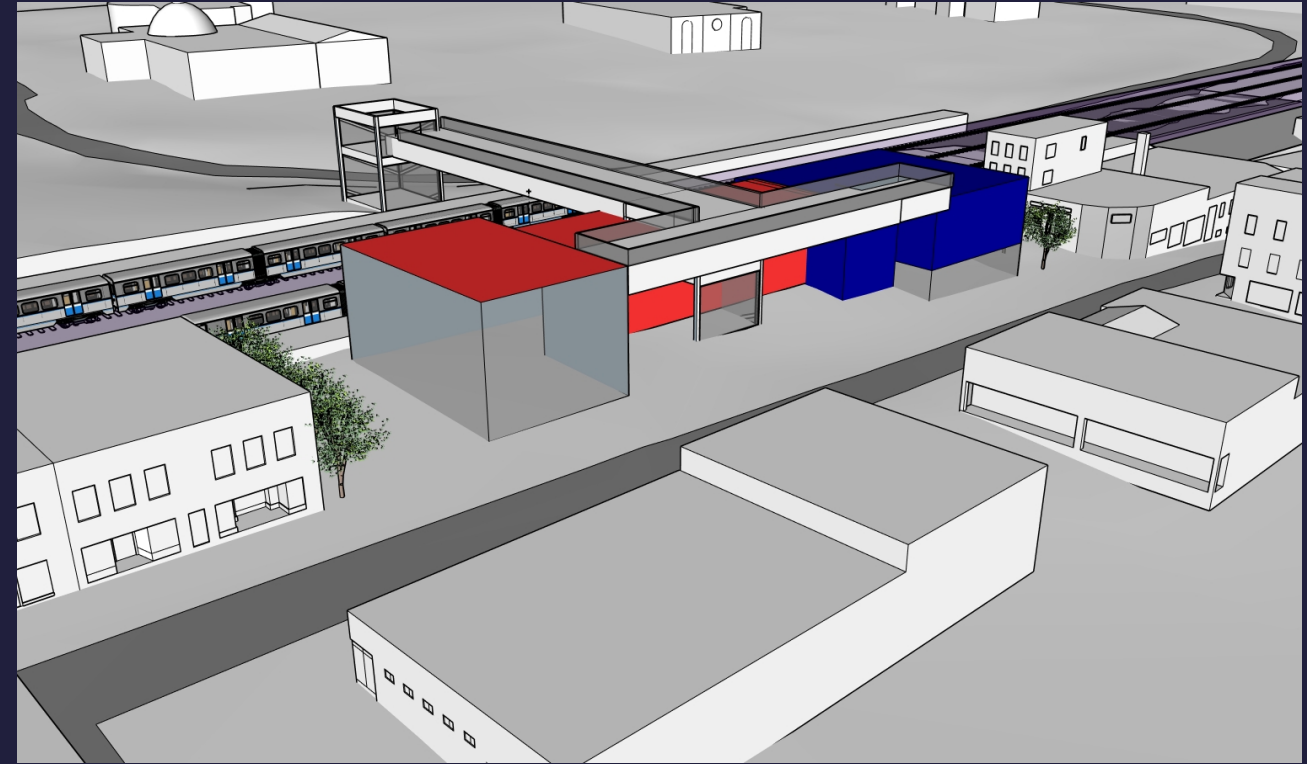
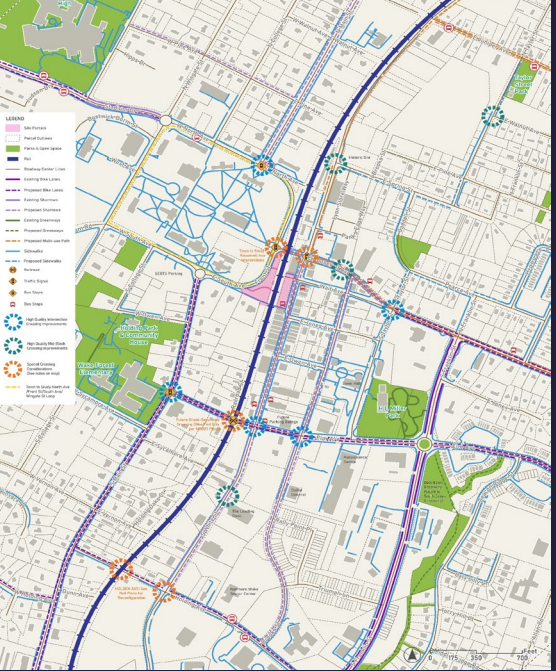
- ❑ Site Feasibility and Analysis underway
- ❑ Applying for funding for Final Design and Construction
- ❑ Begin NEPA and Preliminary Engineering





# WALK/BIKE CONNECTIONS to the MOBILITY HUB

WORKING DRAFT: EXISTING & PROPOSED FACILITIES DATA IN DEVELOPMENT (8.28.2024)







# Apex Mobility Hub

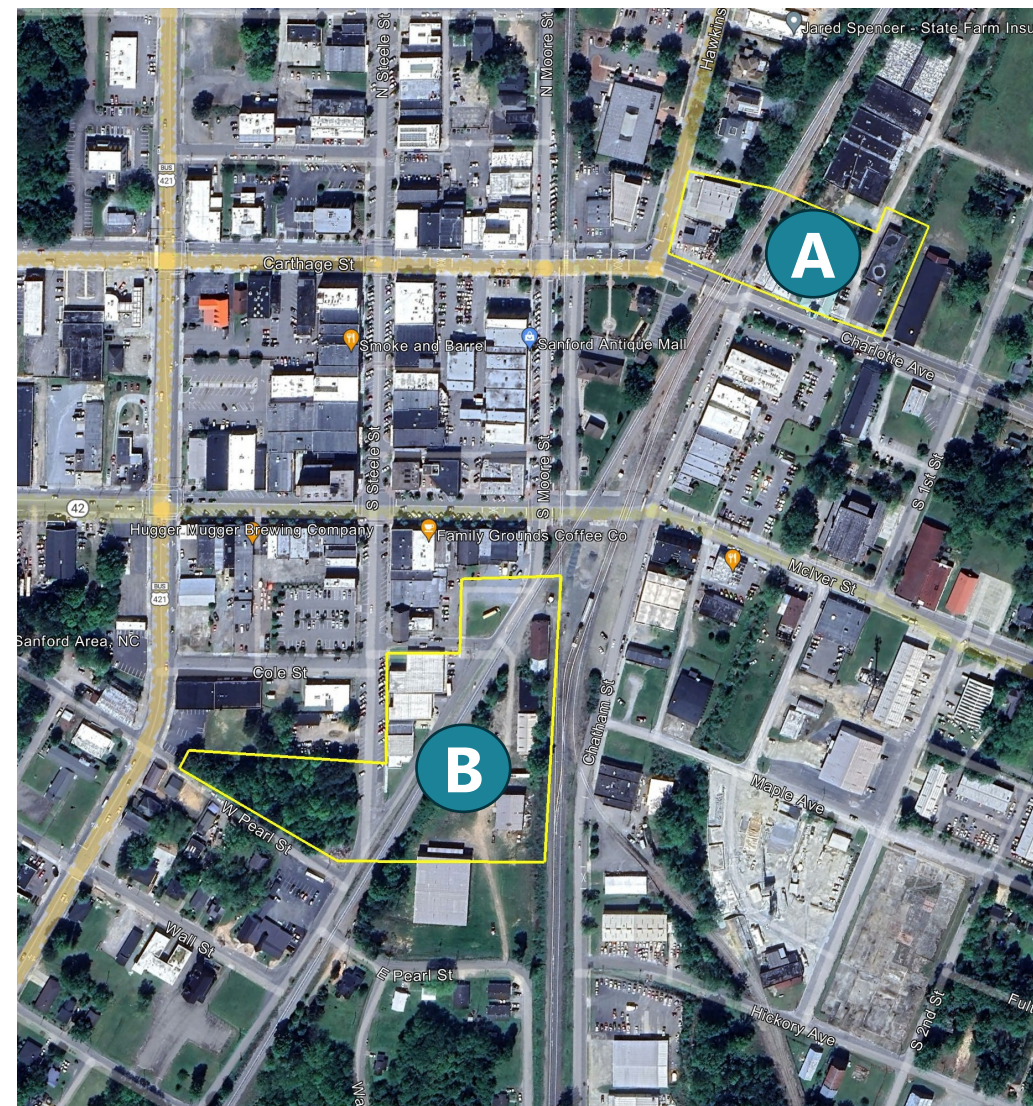
- CSX rail operations creates a complex rail environment – Site 5 selected by Town Council
- Next Steps
  - Explore various mobility hub options on the selected site.
  - Meet with property owners
  - Refine high level concepts
  - Draft feasibility study





# Sanford Mobility Hub

- Sanford City Council has selected Site B
- Public design charette finished yesterday, 11/20.
- Next Steps
  - Finalize potential site layout
  - Continue discussions with property owners
  - Prepare the draft feasibility study





# IMD Prequalification Codes

---

## Integrated Mobility Division (IMD) - Discipline Code Changes

Effective 10/21/2024

- 12 New Codes
- 10 Changed Codes
- 11 Removed

Contact:

Bernard Clark,

Compliance & Procurement Manager

(919 707-2612)

[bbclark2@ncdot.gov](mailto:bbclark2@ncdot.gov)

### Discipline Requirements -Integrated Mobility

<https://connect.ncdot.gov/business/Prequal/Pages/PrequalDisciplineRequirements.aspx?bp&departments=Integrated%20Mobility>

### Directory of Firms

<https://www.ebs.nc.gov/VendorDirectory/default.html>

## Updated Consultant Firm Prequalification Codes for IMD

N e e w C o d e s

Discipline Number	Discipline Name	Description
590	Grant & Finance Administration Assistance	Support for finance and grants administration staff including TrAMS support, FTA program management support, subrecipient assistance, data input and management, eligibility requirements, claims processing, and general grant program management support.
579	Multimodal Facilities Development Planning	Development and implementation of major transportation capital improvements active transportation improvements and related project work including project planning, project design administration, contract administration, and project and program development and implementation. Provide expertise and guidance on multimodal service design to include Transit-Oriented Development, Complete Streets, land use considerations, FTA Fixed Guideway expertise and similar initiatives.
580	Multimodal Transportation Financial Planning	Provide expertise and guidance on multimodal transportation planning, project management and financing to include Joint Development Projects and Public-Private Partnerships (negotiating agreements, facilitating innovative financing arrangements, etc.), transit alternative financing tools expertise (including value capture) and similar initiatives.



Discipline Number	Discipline Name	Description
582	Multimodal Transportation Service Planning	Provide expertise and guidance on multimodal transportation planning, project management, emerging technology, transit technology, grant application services, financing and service design to include multimodal interoperability, Bus Rapid Transit, Light Rail Transit, Commuter Route Studies, Planning (Rail & Bus), first-mile/last-mile solutions, micromobility and new mobility (rideshare, ebikes, AV transit). Develop supporting information necessary to guide overall multimodal implementation and supportive policy action. Develop productivity trends and outline possible strategies. Determination of viability and/or feasibility of multimodal transportation projects, from the standpoint of: logistics, alternatives analysis, intermodal relationships, performance, economics, regulatory compliance, and other related disciplines. Support for areas involving applications and agreements preparation, performance metrics, and all aspects of the multimodal transportation planning process.

**N  
e  
w  
C  
o  
d  
e  
s**

Discipline Number	Discipline Name	Description
581	Complete Streets	Provide expertise and guidance on multimodal transportation facility selection and design, ADA compliance, facility selection, and the integration of multiple transportation modes converging within a project or project area. Ability to conduct analysis and provide information including bike/ped crash data, demand estimation, exposure, level of service, and comfortability for bicycle, pedestrian, scooter and other mobility devices with emphasis on project design requirements. Experience, exposure, and access to all design guidance resources from AASHTO, NACTO, FHWA, and NCDOT RDM. Exposure to and knowledge of NCDOT's project management structure and system (PDN) for delivering projects and where and when multimodal components are a part of that structure.
584	Demand Modeling, Ridership, Revenue, Operating Costs for Transit Operations	Ridership/Revenue modeling for passenger transit systems.
585	Studies of Economic & Fiscal Impact of Multimodal Transportation Activities	Economic analysis of Multimodal Transportation activities.
586	Infrastructure Environmental Analysis & Documentation	Including, but not limited to completion of NEPA, Title VI Equity Analysis, Flood Zone determination and additional infrastructure analysis, determinations and required documentation.

Discipline Number	Discipline Name	Description
588	Multimodal Construction Admin/Inspection	Inspection of multimodal construction, supervision of work performed by all contractors. Perform construction administration and inspection of work performed by all contractors on a project according to FTA and State of NC regulations, and other applicable industry standards, reporting findings and data in an effective format to comply with project specifications and compliance. Provide written approach to construction admin and inspection procedures to ensure project compliance.
589	General Division Support	Support for IMD Program and Project Managers, Engineers, Program Leads. Develop and review contracts and agreements for engineering, planning, and operations and facilities in support of NCDOT IMD programs; review IMD business practices to ensure compliance with NCDOT policies and procedures.
583	Contract, Agreement and Documentation Review	Review Grant Agreement Templates annually and make necessary changes due to changes in regulations. Review/approve all grant awards and Agreements for subrecipients prior to going to BOT. Procurement documentation review (independent cost estimates, cost/price analysis, and RFP/RFQ reviews.



**N  
e  
w  
C  
o  
d  
e  
s**

<b>Discipline Number</b>	<b>Discipline Name</b>	<b>Description</b>
587	Multimodal Education & Outreach Services	Assistance with program management, education and outreach, public involvement, communications, marketing, etc.

A m e n d e d C o d e s

Discipline Number	Discipline Name	Description
132	Landscape & Streetscape Design	Provide support for streetscape design concepts that enhance the travel environment within public spaces and along street rights-of-way. This includes developing solutions for improving pedestrian environments.
315	Municipal & Regional Planning Studies	Develop municipal and regional multimodal plans and studies. This includes bicycle, pedestrian, transit and other multimodal transportation plans.
316	Multi-Use Trail Design, Survey & Layout	Provide conceptual and preliminary engineering design of multiuse paths and trails.
318	Multi Modal Map Preparation and Presentation	Expressing graphically, the natural and social features of target areas to convey study results or spatial data.
505	Facility construction project oversight, administration, inspection, management and/or monitoring	Provide oversight services for project construction of local, state and federally funded new or renovated transit facilities.
414	Special Multimodal Studies	Provide assistance on special transit planning related needs including, but not limited to value engineering, policy analysis, data analysis and management, state and federal compliance studies, land acquisition, infrastructure evaluations, emerging technology studies and independent fee estimates.
416	Multimodal Corridor Planning	Develop multimodal plans and studies for transportation corridors. This includes the planning and enhancement of transit service along roadway corridors with consideration of bicycle and pedestrian connections and accommodations.

A m e n d e d C o d e s

Discipline Number	Discipline Name	Description
418	Multimodal Project Management & Facilitation	Provides assistance and guidance with program and project management. Guides leadership with defining and determining policy. Helps to bring about outcomes (such as learning, productivity, or communication) by providing guidance, or supervision. Review project data prior to meetings, reviews and prepares meeting materials, and leads meeting.
417	Conducting Compliance Review Activities	Conduct compliance reviews of grant recipients and sub recipients to determine whether they are complying with the requirements of FTA and State funded transit programs. Complete auditing and pre-auditing activities in regards to CARES Act Funds, FTA Discretionary Grant Awards and other FTA funding sources. Examples of subrecipient oversight include collection of drug and alcohol certifications, on-site review of postings and verification of compliance activities, verification of dispositions and other compliance related tasks.
511	Asset Condition Assessment and Tracking (Formerly Transit facility and equipment maintenance management program assistance)	Collect asset data to include asset inventory and condition for transit agency facilities and vehicles, trail and sidewalk conditions and other federally funded items IMD is responsible for. Assist with fleet assessments and usage, transition plans and maintenance plans. Provide community transit agencies with assistance and guidance on the appropriate facility maintenance as required by FTA.



D e l e t e d C o d e s

Discipline Number	Discipline Name	Description
415	Transit Cartography	Expressing graphically, usually through maps, the natural and social features of the earth.
558	IMD Rail Architectural Services	Specific to rail passenger train stations or Locomotive and Railcar Maintenance Facilities.
559	IMD Passenger Station Site Design	The associated site design at railroad passenger station projects that include elements such as parking, erosion control, storm water control, utility design, open space, setbacks and other local ordinance, and State and Federal requirements.
413	Transit Support Feasibility and Implementation Studies	Develop supporting information necessary to guide overall system implementation and supportive policy action.
423	Transit Multimodal Transportation Planning	Provide expertise and guidance on multimodal transportation planning, project management, financing and service design to include multimodal interoperability, Bus Rapid Transit, Light Rail Transit, Commuter Route Studies and Planning (Rail & Bus), Transit-Oriented Development, first-mile/last-mile solutions, new mobility (rideshare, ebikes, AV transit), Complete Streets, land use considerations, Joint Development Projects and Public-Private Partnerships (negotiating agreements, facilitating innovative financing arrangements, etc.), FTA Fixed Guideway expertise, transit alternative financing tools expertise (including value capture) and similar initiatives.

D e l e t e d C o d e s

Discipline Number	Discipline Name	Description
419	Transit Service Productivity Review and Analysis	Develop productivity trends and outline possible strategies for transit.
427	Multi Modal Feasibility Studies	
437	Viability Analysis & Support Work for Multi Modal Transportation Projects	Activities related to the determination of viability and/or feasibility of Multi Modal Transportation projects, from the standpoint of: logistics, alternatives analysis, intermodal relationships, performance, economics, regulatory compliance, and other related disciplines. It also covers support areas involving applications and agreements preparation, performance metrics, and all aspects of the Multi Modal Transportation planning process.
501	Multimodal Facilities Planning	Development and implementation of major transportation capital improvements active transportation improvements and related project work including project planning, project design administration, contract administration, and project and program development and implementation.
504	Conduct safety management system (SMS) review program	Conduct discretionary SMS reviews of grant recipients and sub recipients to determine whether they are honoring their commitments, as represented by certification, to comply with the requirements of FTA and State funded transit programs.
510	Fleet camera system assessments	Provide assessment and evaluation of the use and maintenance of fleet camera systems.

# Thank you!

---

Next Multimodal Updates Webinar - February/March 2025

For slides and recordings – [Multimodal Updates Webinars](#)