

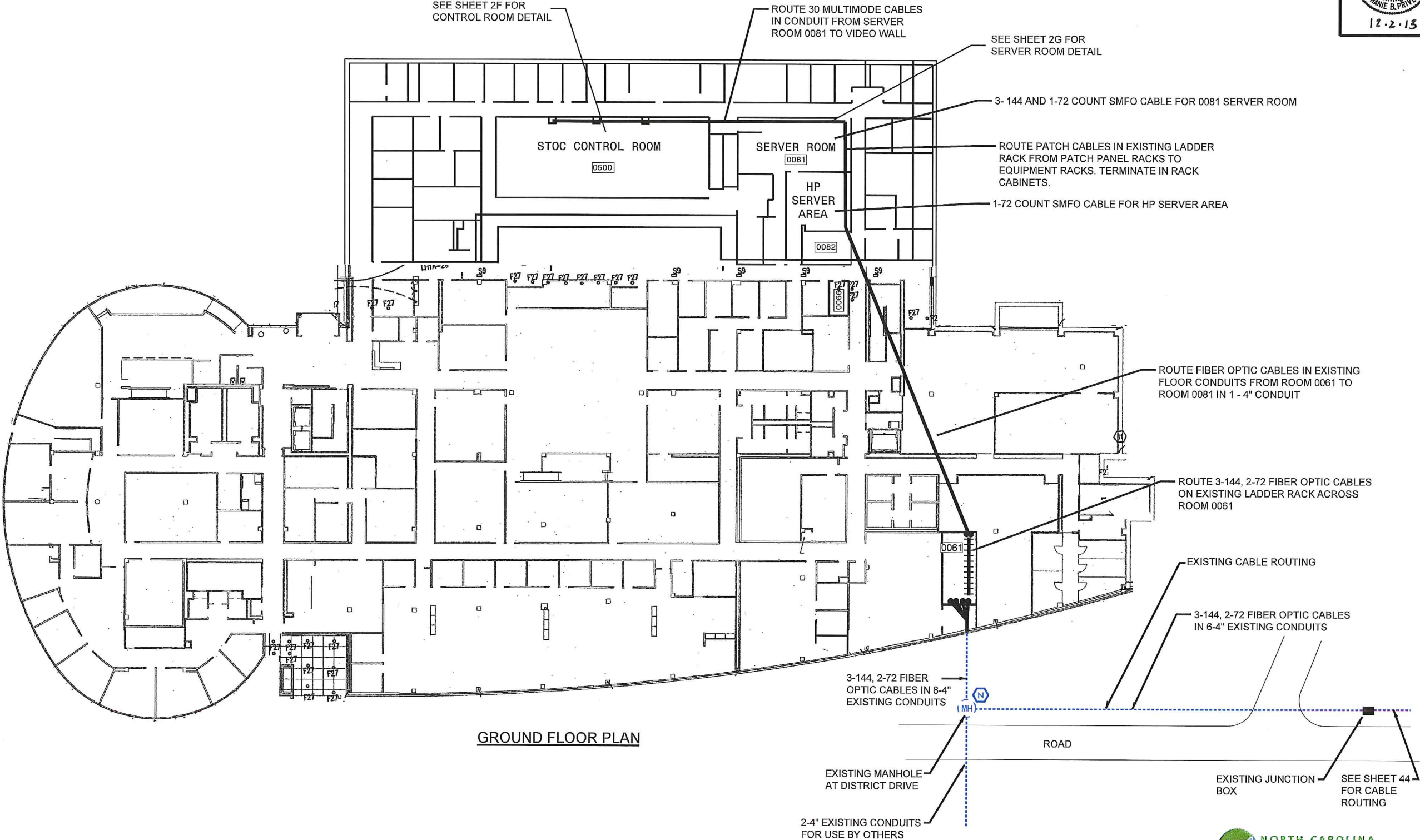
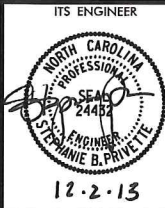
# Attachment 14

## Statewide Traffic Operations Center (STOC)

### Floor Plan

PLAN OF  
RECORD

PROJECT REFERENCE NO.	SHEET NO.
C202250	2E



GROUND FLOOR PLAN

RALEIGH ARMED FORCES RESERVE CENTER,  
JOINT FORCES HEADQUARTERS  
DISTRICT DRIVE  
RALEIGH, NC



ITS PLANS  
BUILDING DETAIL

\\as\_Built\chase 2.sht 02E.dgn

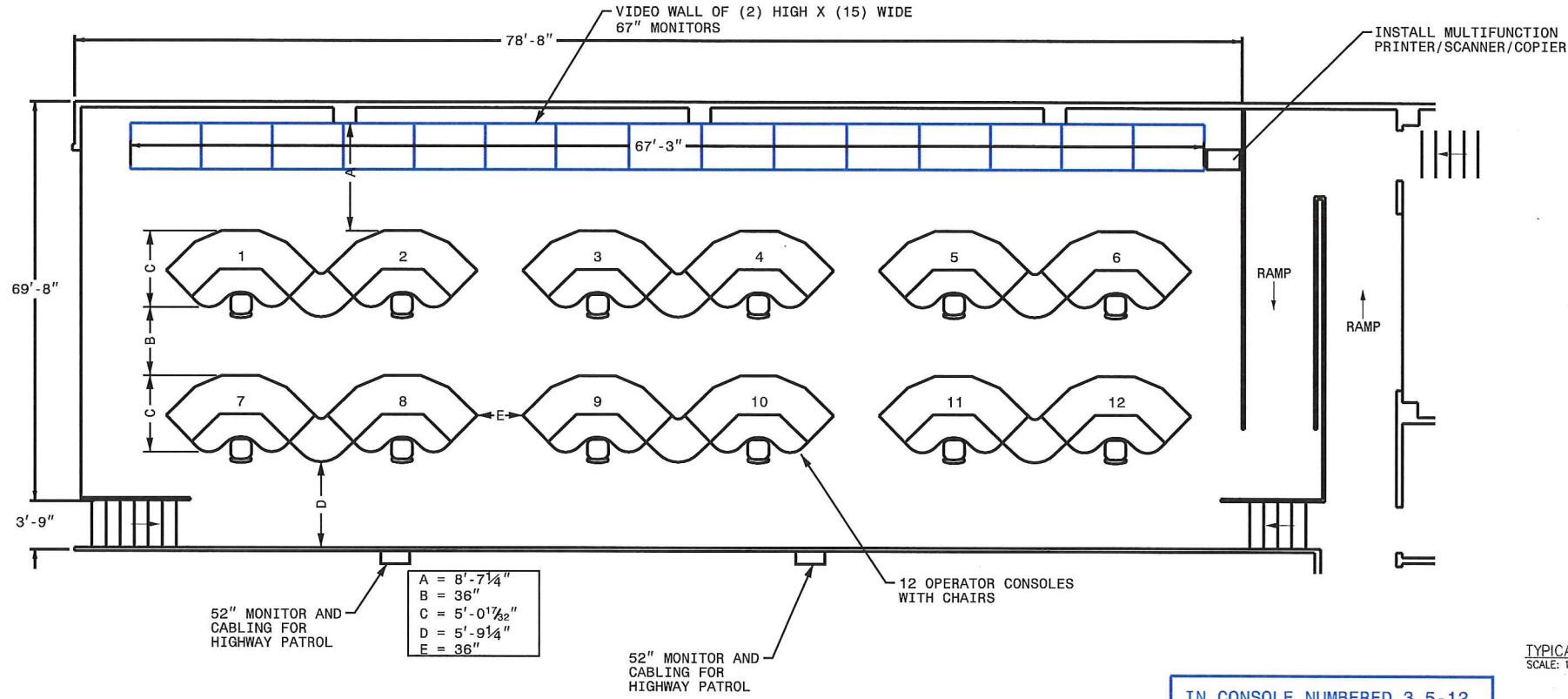
11/21/2013

REVISIONS



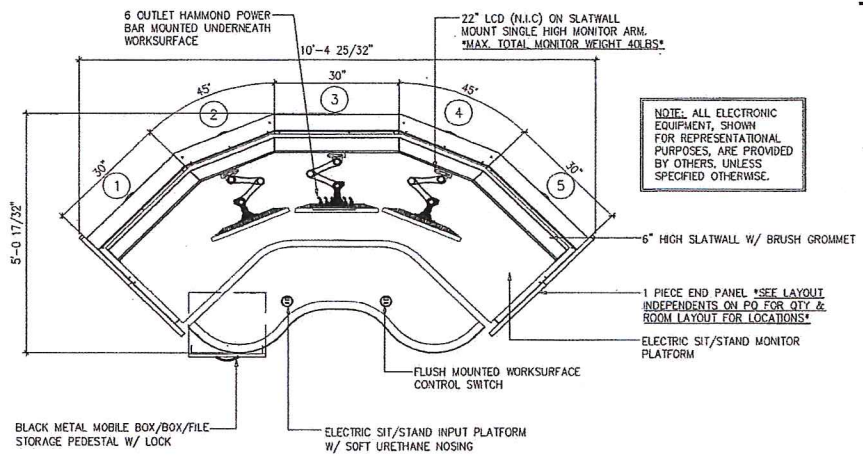
PLAN OF RECORD

PROJECT REFERENCE NO.	SHEET NO.
C202250	2F

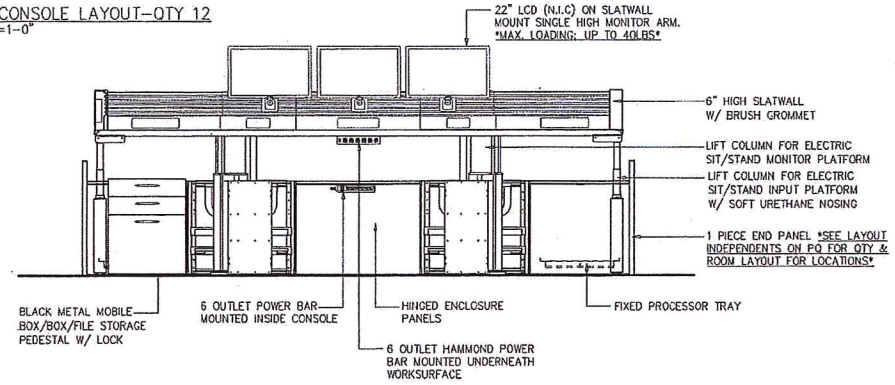


STOC CONTROL CENTER (ROOM 0500)  
ROOM LAYOUT

IN CONSOLE NUMBERED 3,5-12  
INSTALL 2 MONITORS, 1 CPU,  
BATTERY BACK UP, KVM SWITCH,  
KEYBOARD AND MOUSE

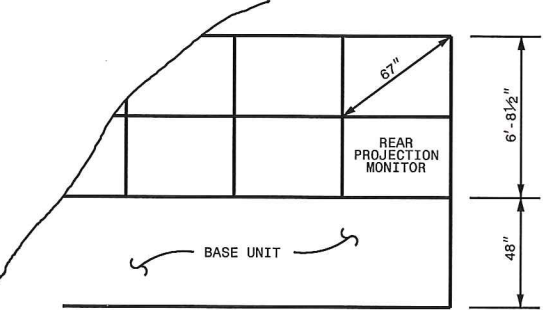


TYPICAL CONSOLE LAYOUT-QTY 12  
SCALE: 1/2"=1'-0"



TYPICAL CONSOLE ELEVATION-QTY 12  
SCALE: 1/2"=1'-0"

OPERATOR'S CONSOLE

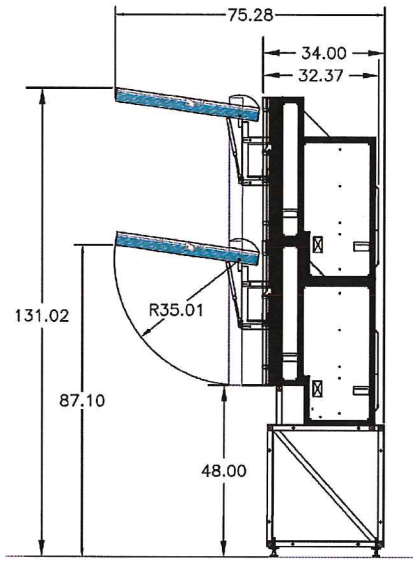


ELEVATION OF  
VIDEO WALL SECTION



VERTICAL VIEWING ANGLE FROM OPERATORS EYE LEVEL

\* FHWA Human Factors Guidelines For TMC, Dated July 1999  
(Most Recent Publication)  
29.3"-50th Percentile Female - 33.5"-45 th Percentile Male



② DISPLAY WALL - SIDE ELEVATION  
SCALE: 1/2"=1'-0"

SIDE ELEVATION OF  
VIDEO WALL



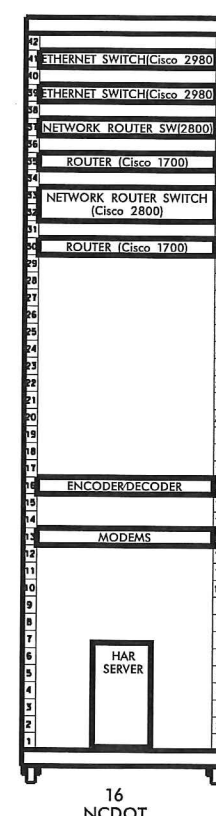
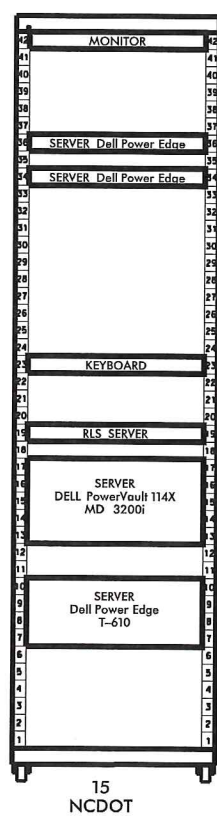
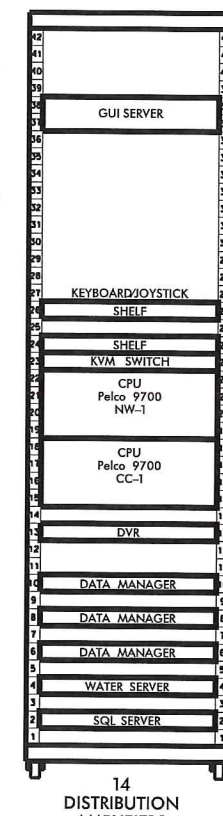
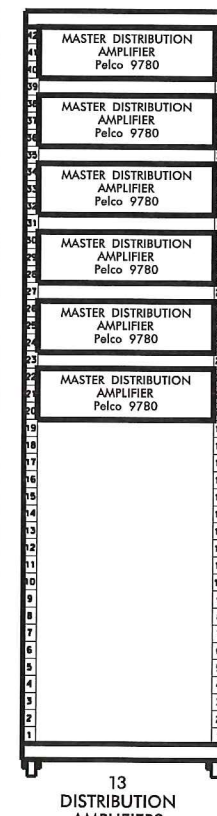
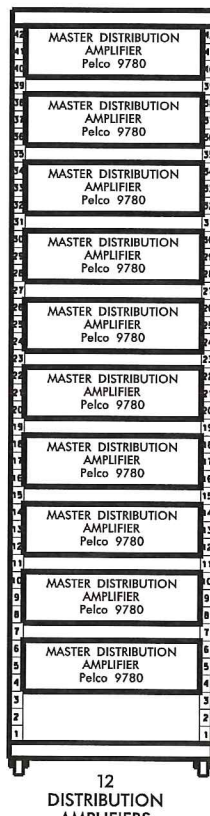
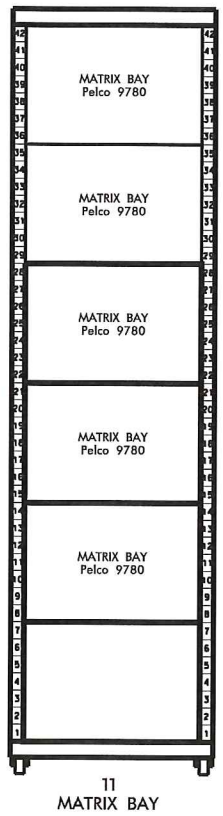
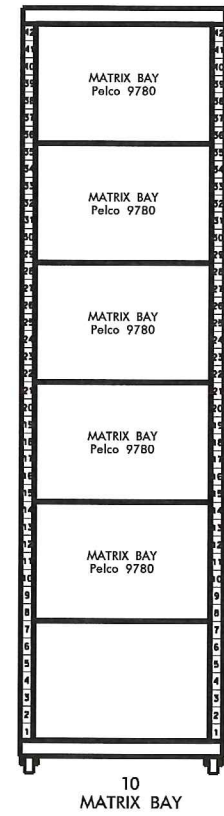
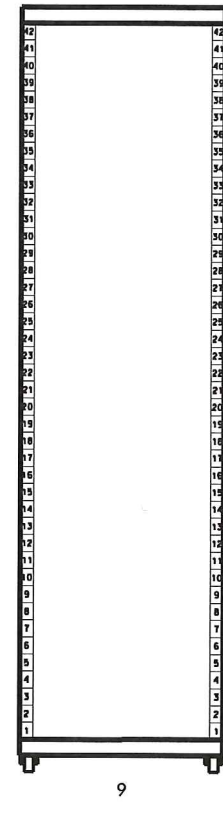
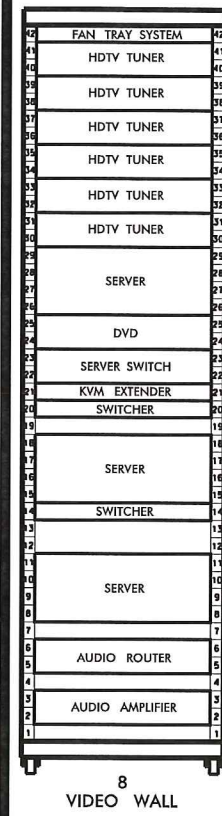
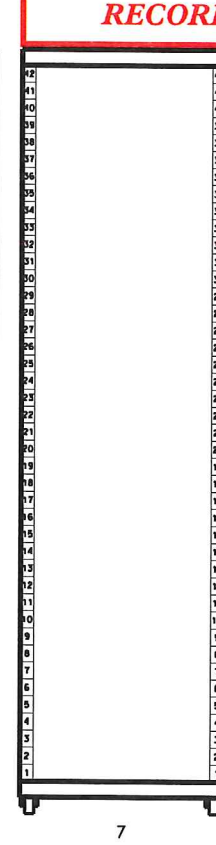
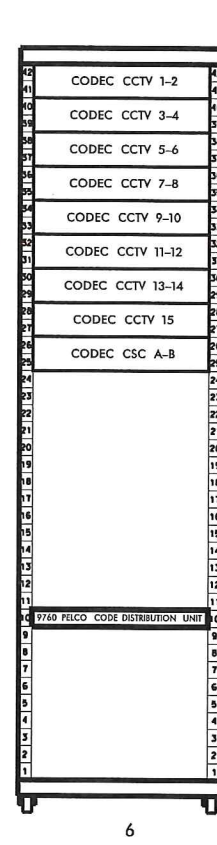
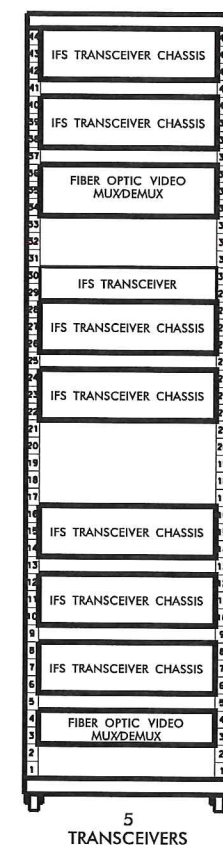
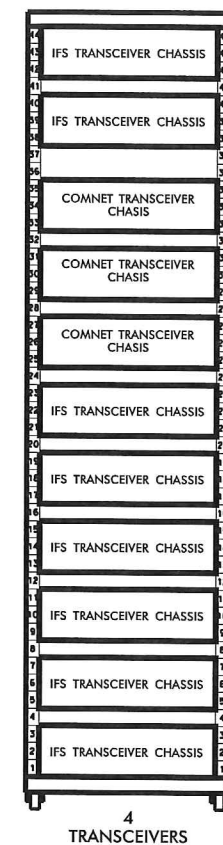
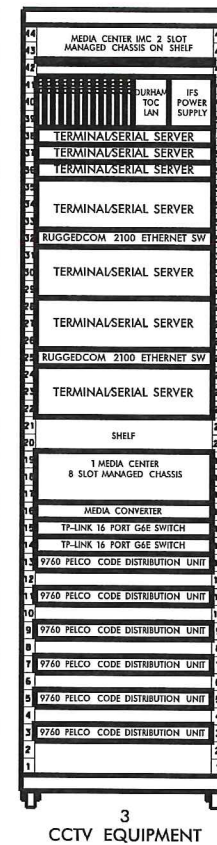
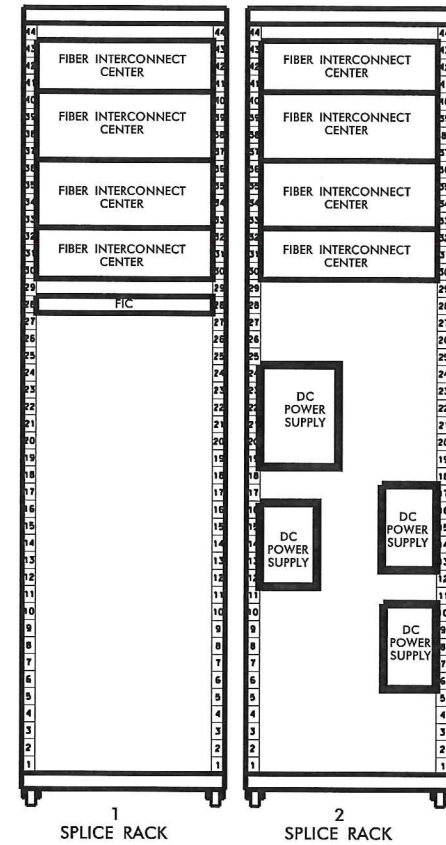
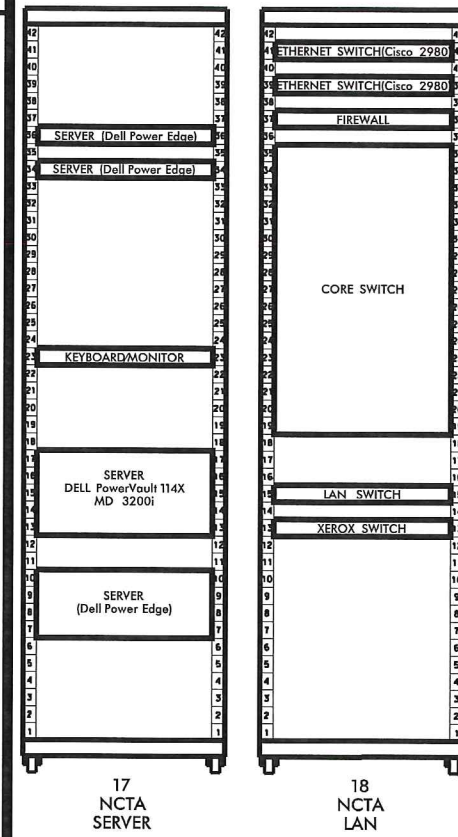
ITS PLANS  
STOC DETAIL



REVISIONS

\\as\_built\phase 2\st 026.dgn

11/21/2013



# PLAN OF RECORD

PROJECT REFERENCE NO. C202250 SHEET NO. 26

ITS ENGINEER  
NORTH CAROLINA PROFESSIONAL ENGINEER  
SERIAL 24432  
12.2.13



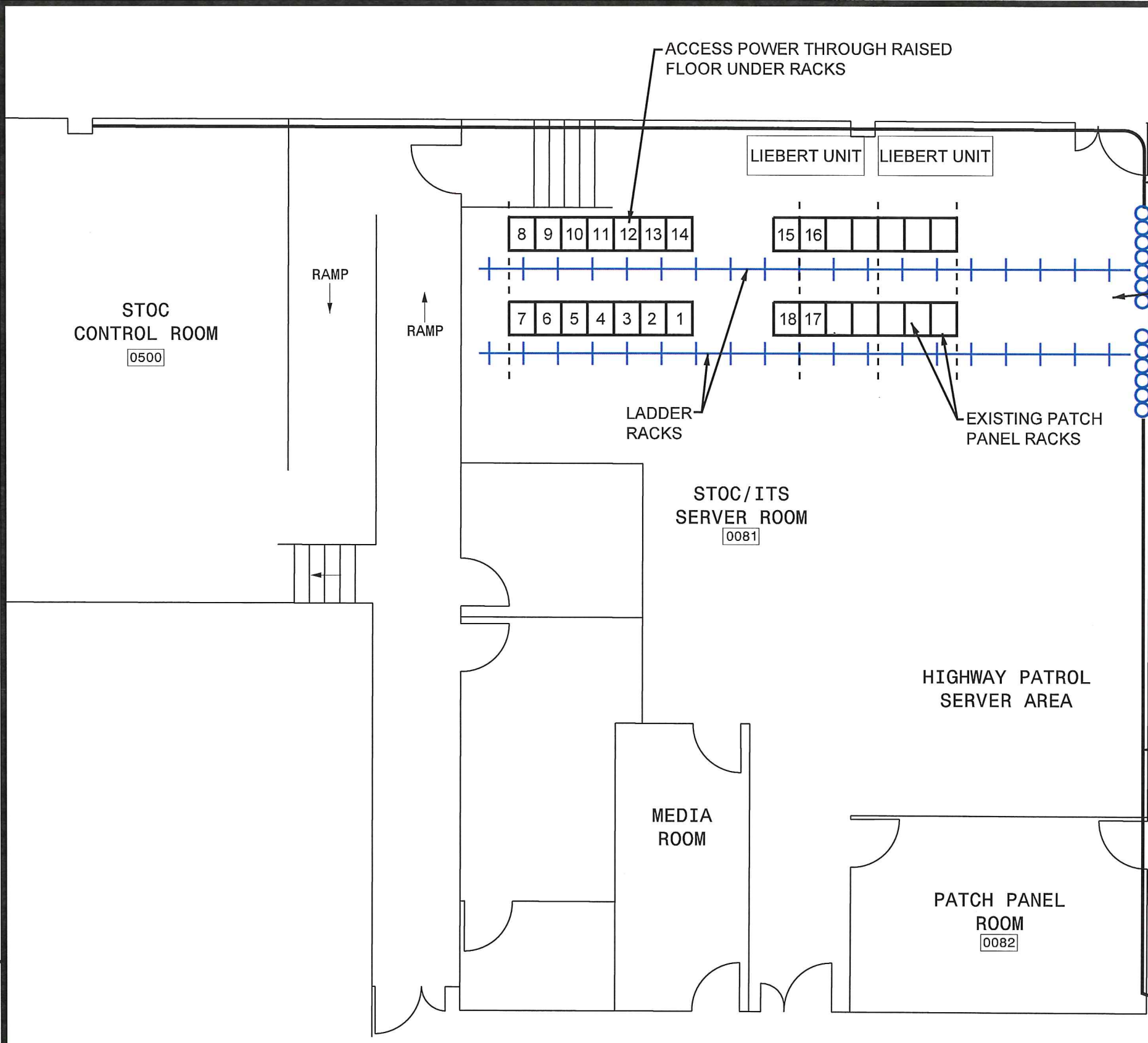
ITS PLANS  
STOC DETAIL



PLAN OF RECORD

PROJECT REFERENCE NO.	SHEET NO.
C202250	2H

ITS ENGINEER



ROUTE FIBER OPTIC CABLES RACK TO NORTH WALL OF CONTROL ROOM FOR VIDEO WALL

INSTALL 18 EQUIPMENT RACKS (19"X78"H) IN TWO ROWS. TERMINATE FIBER OPTIC CABLE IN RACKS. MAINTAIN ADEQUATE CLEARANCE ON BOTH FRONT AND BACK SIDES OF RACKS. (SEE SHEET 2F FOR RACK DETAILS)

ROUTE 3-144 AND 2-72 FIBER SMFO CABLES FROM ROOM 0061 TO ROOM 0081 IN EXISTING FLOOR CONDUIT.

4" FLOOR CONDUIT TO ROOM 0061

REVISIONS

11/21/2013

\\s\_built\phase 2\st 02H.dgn

TRAFFIC CONTROL DEVICES, INC.

Kimley-Horn and Associates, Inc.

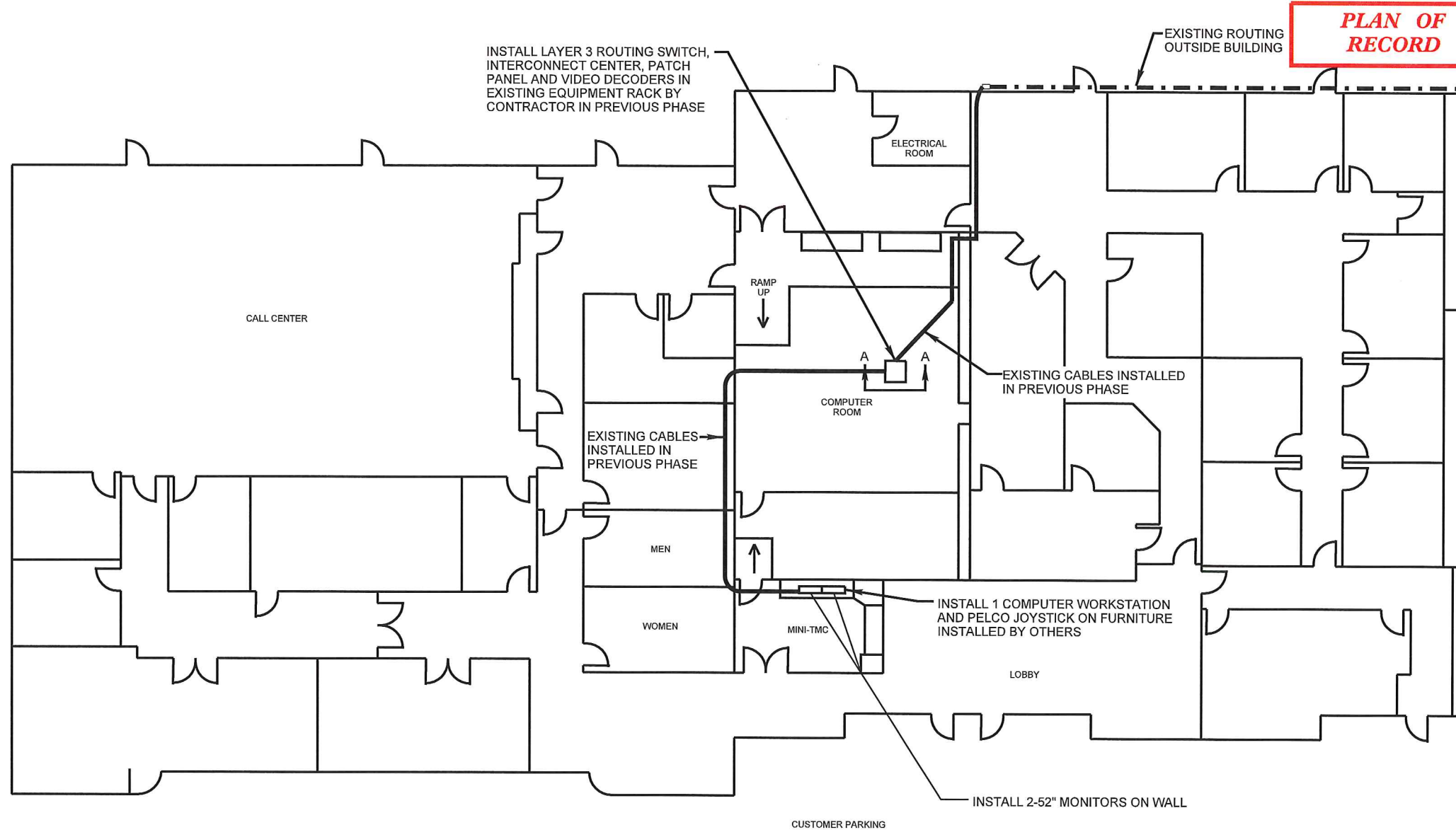
SUMMIT CONSULTING

NORTH CAROLINA Turnpike Authority

ITS PLANS STOC DETAIL

11/21/2013 -Vas\_Builditsphase 2.sht 02.dgn

REVISIONS



PROJECT REFERENCE NO.	SHEET NO.
C202250	21

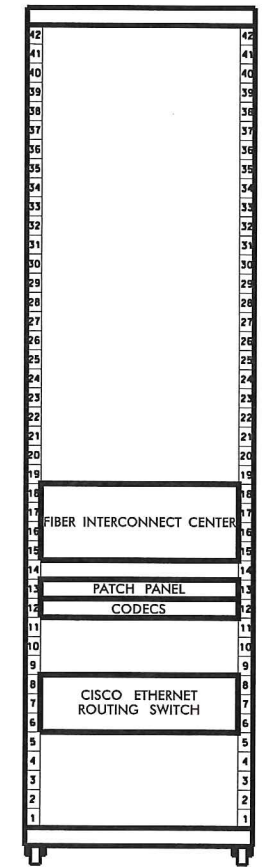
ITS ENGINEER

*[Signature]*

NORTH CAROLINA PROFESSIONAL ENGINEER SEAL 24432

JANIE B. PRINCE, P.E.

12.2.13



SECTION A-A

NCTA CUSTOMER SERVICE CENTER  
200 SORRELL GROVE CHURCH ROAD  
MORRISVILLE, NC



Kimley-Horn  
and Associates, Inc.

NC License #F-0102  
P.O. Box 33068  
Raleigh, NC 27635  
(919) 677-2000



ITS PLANS  
CUSTOMER SERVICE  
CENTER BUILDING  
DETAIL