

# Migration of NCSHP GIS Decision Support from Motor Carrier Enforcement to Traditional Enforcement – The First Step

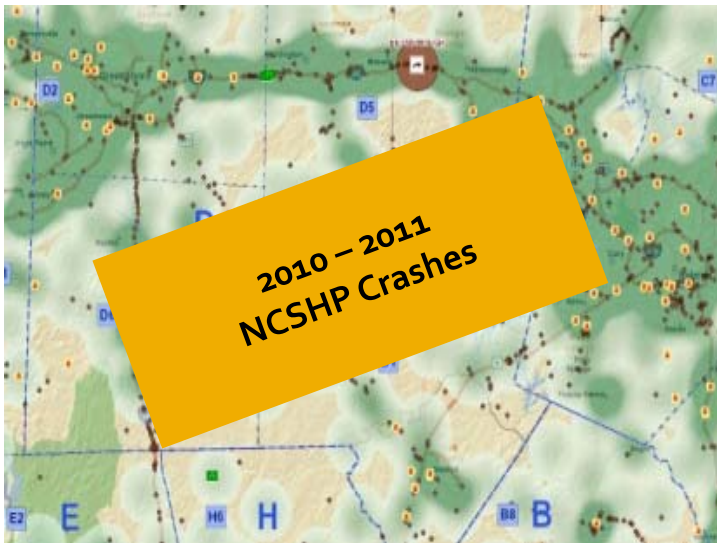
TRCC Presentation  
November 20, 2012

Greg Ferrara  
Program Manager  
Institute for Transportation Research  
and Education (ITRE)  
North Carolina State University  
Raleigh, NC



# Project Overview

## GIS WEB MAP (NON-MCE)



## PERFORMANCE MEASUREMENT NEEDS ASSESMENT



**Why?**

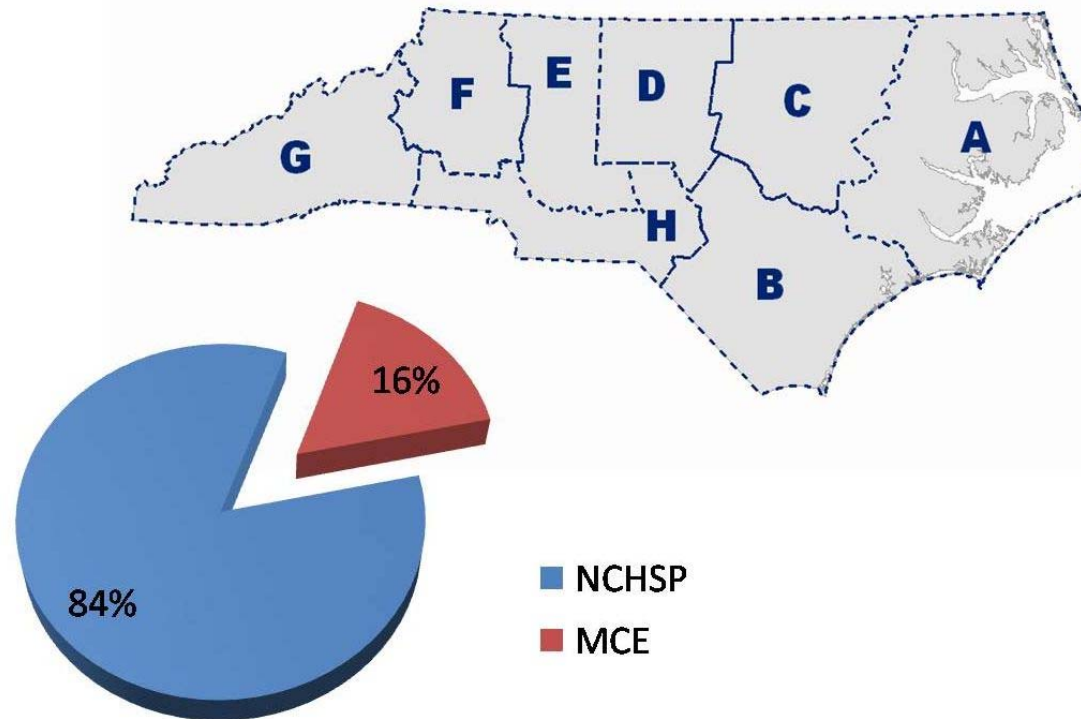


# Problem

*A Patrol-Wide GIS-based Decision Support System?*

*...Does Not Exist!*

# MCE vs. Non-MCE



# Existing Conditions

## MCE

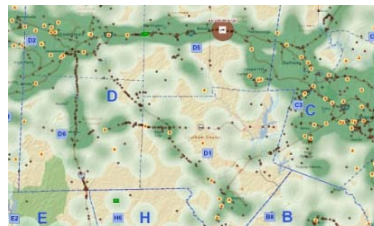


## MCE SCORECARD



*Performance  
Measurement  
Tracking*

## WEB GIS MAPS



*Enforcement  
Prioritization*

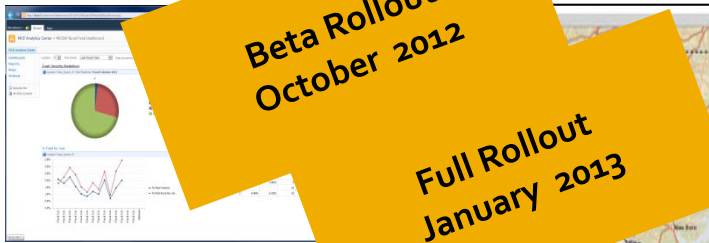
# Vision?

## MCE



## MCE ANALYTICS CENTER

SCORECARD DASHBOARD ANALYTICS



Beta Rollout  
October 2012

Full Rollout  
January 2013

## Non-MCE

WEB GIS MAP



GHSP Grant  
2009-2011 Snapshot

Additional Map Updates  
Needed

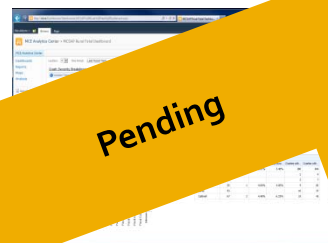
PERFORMANCE MEASUREMENT  
NEEDS ASSESSMENT

Completed  
October 1, 2012



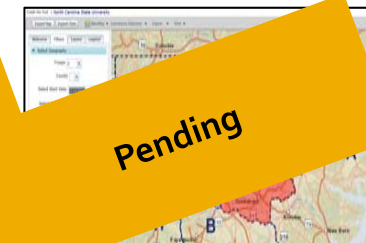
## NCSHP ANALYTICS CENTER

SCORECARD DASHBOARD



Pending

MAP ANALYTICS

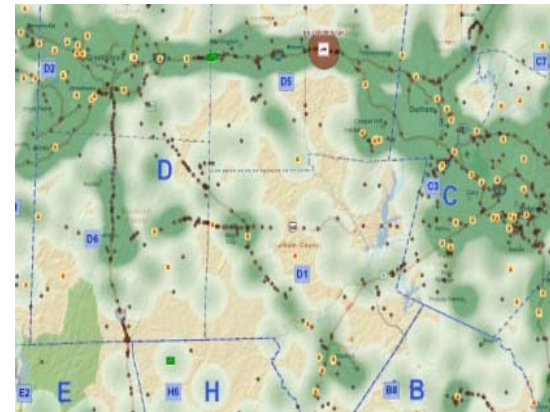


Pending

# GIS Web Map

- *Core NCHSP / ITRE Task Force*
- *NCSHP-Only Crashes*
- *~80% NCDOT Mileposted*
- *Individual Crashes for 5 Measures*
- *Crashes per Location*
- *Trained Troop Supervisors*

WEB GIS MAP

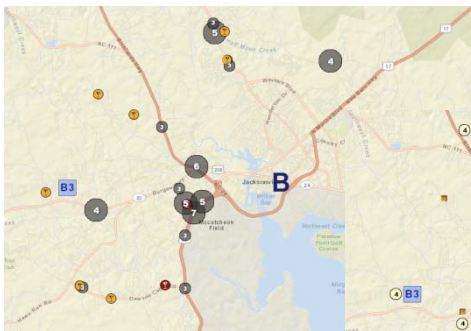




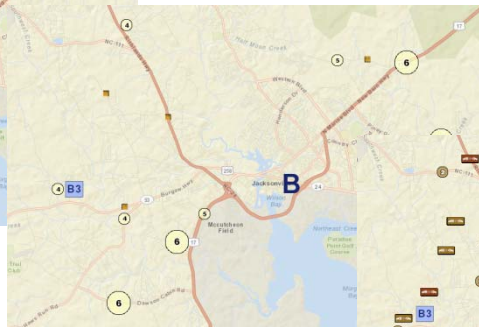
# GIS Web Map

## 5 Measures

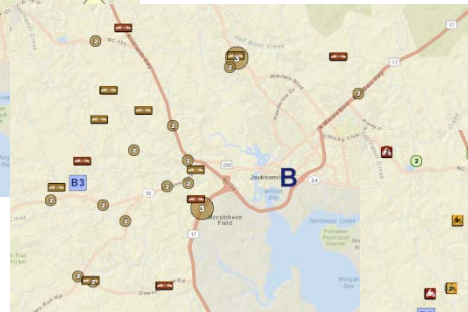
*Alcohol / Drug*



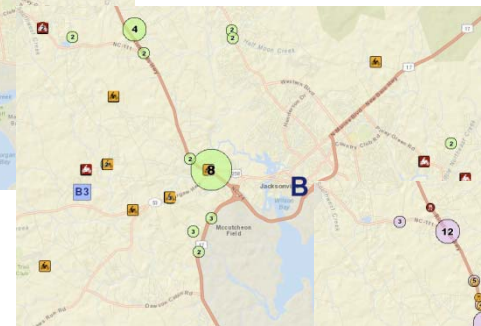
*Speeding*



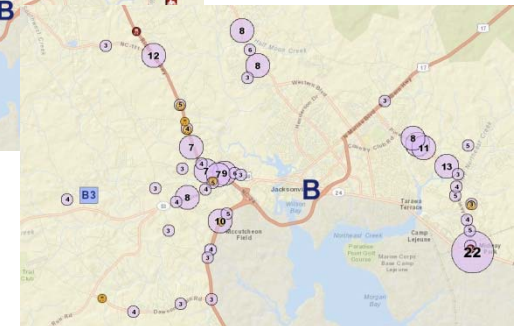
*Unbelted*



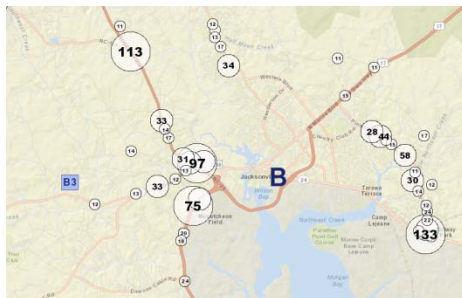
*Motorcycle*



*Teen*

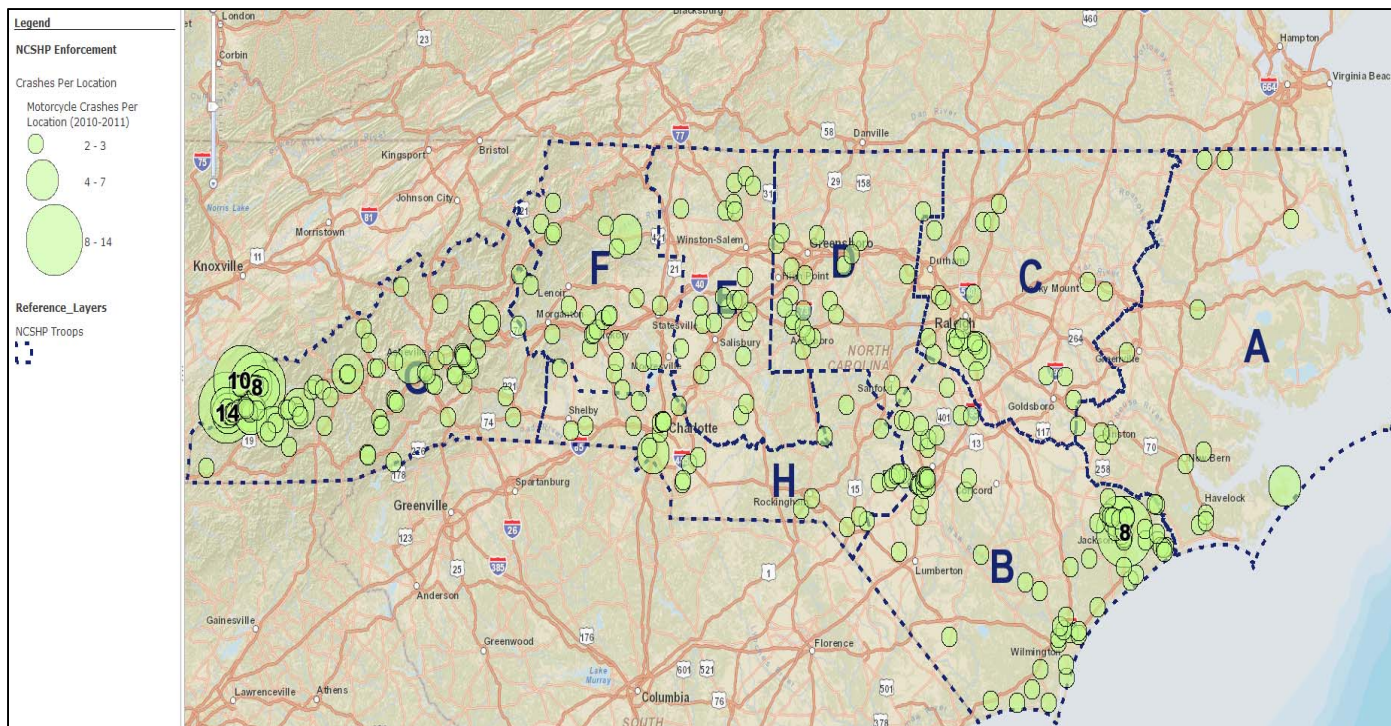


*...Plus  
All CRASHES*



# GIS Web Map

## Demo



[Coverlab.org/shp](http://Coverlab.org/shp)