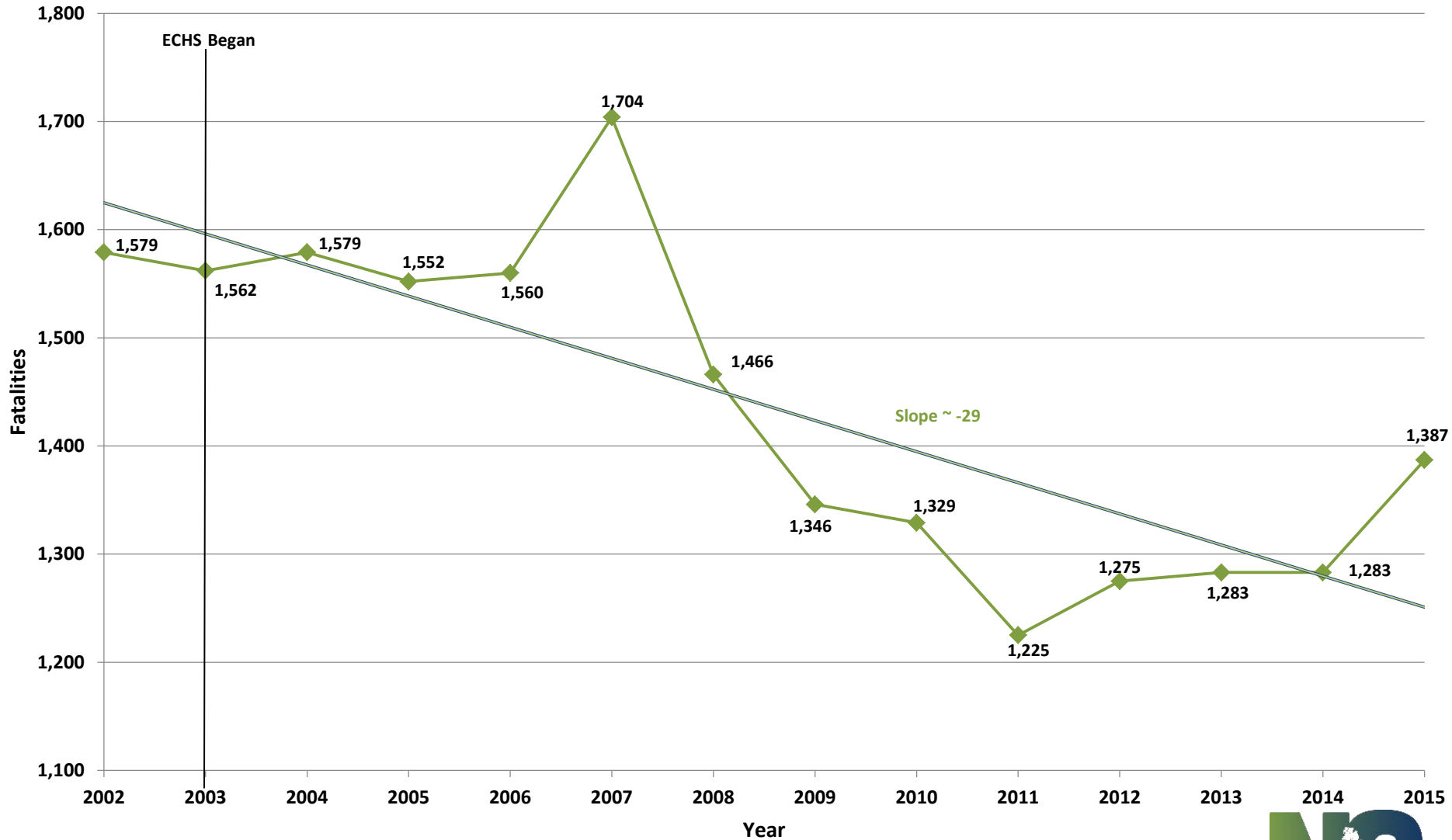




*Fatal and Serious Injury Trend Update*

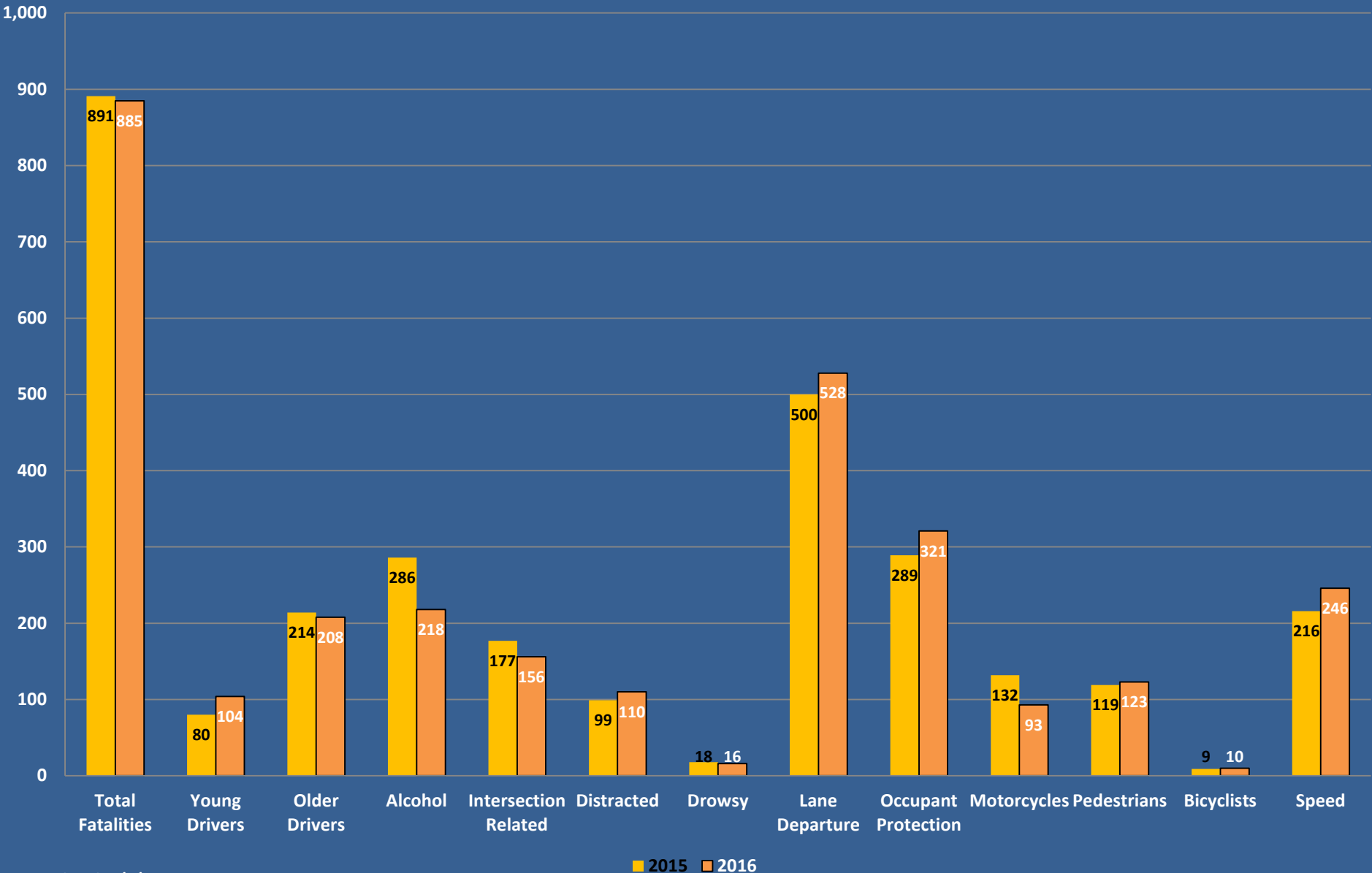


# North Carolina Fatalities Trends Since 2002



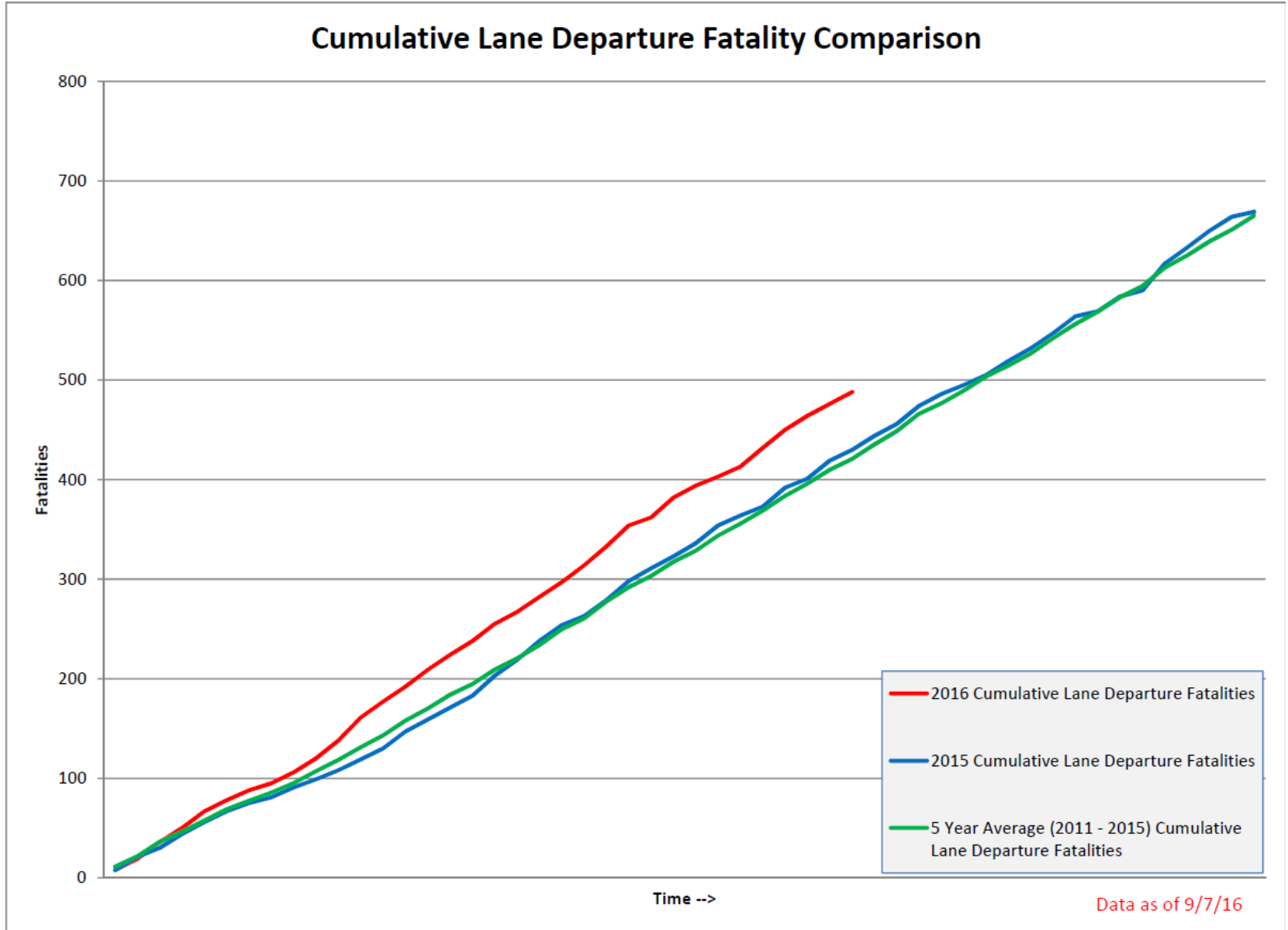
Last Updated: 9/7/16

# Year to Date (January-August) Fatalities



Last Updated: 9/7/2016

# Cumulative Lane Departure Fatality Comparison



Data as of 9/7/16



# NHTSA Traffic Safety Facts - 2015 Motor Vehicle Crashes

State	2014	2015
	Total Fatalities	Total Fatalities
Texas	3,536	3,516
California	3,102	3,176
Florida	2,494	2,939
Georgia	1,164	1,430
North Carolina	1,284	1,379
Pennsylvania	1,195	1,200
New York	1,041	1,121
Ohio	1,006	1,110
Illinois	924	998
South Carolina	823	977

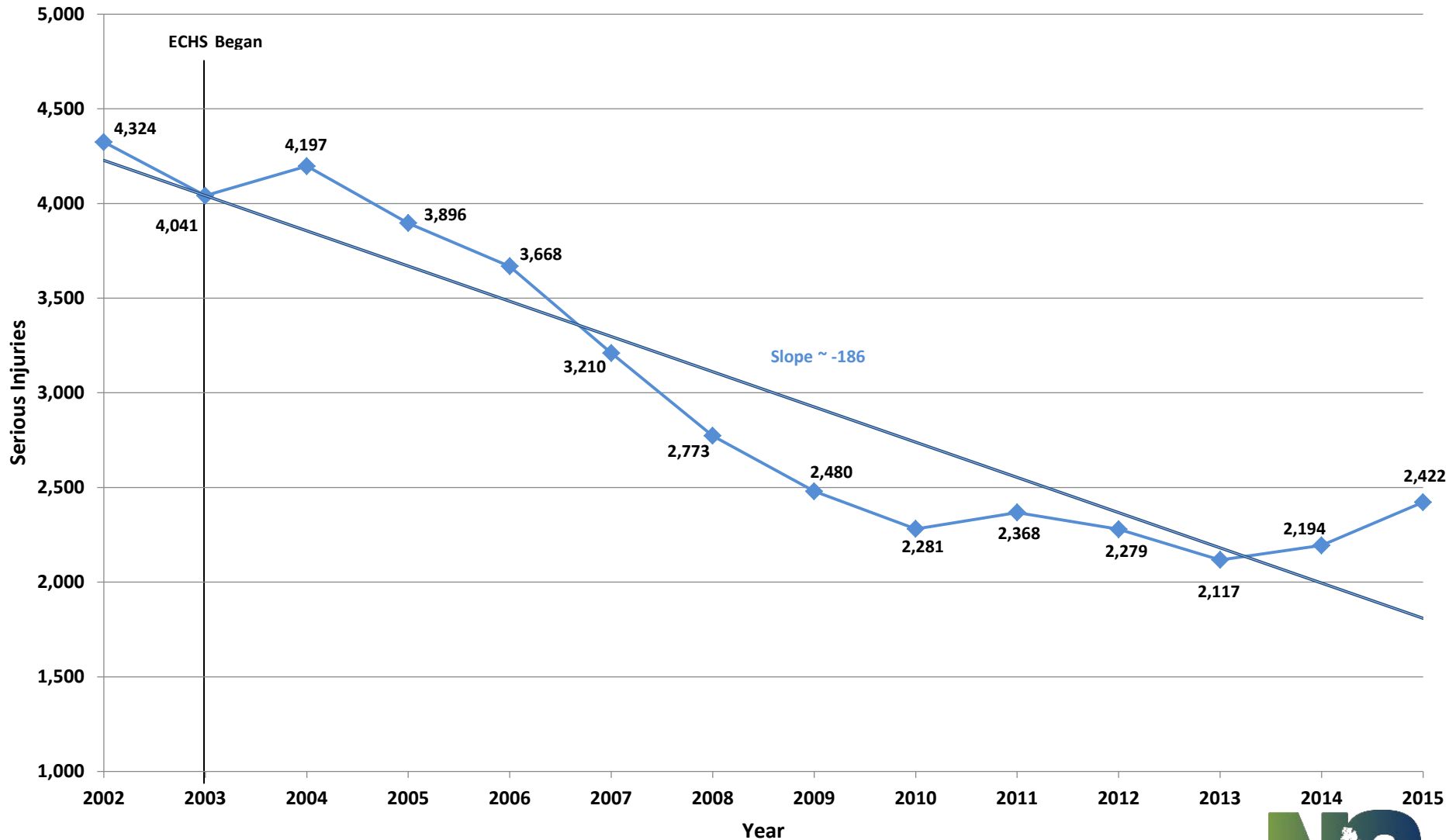
Source: FARS 2014 Final File, 2015 ARF

NHTSA's National Center for Statistics and Analysis

1200 New Jersey Avenue SE., Washington, DC 20590

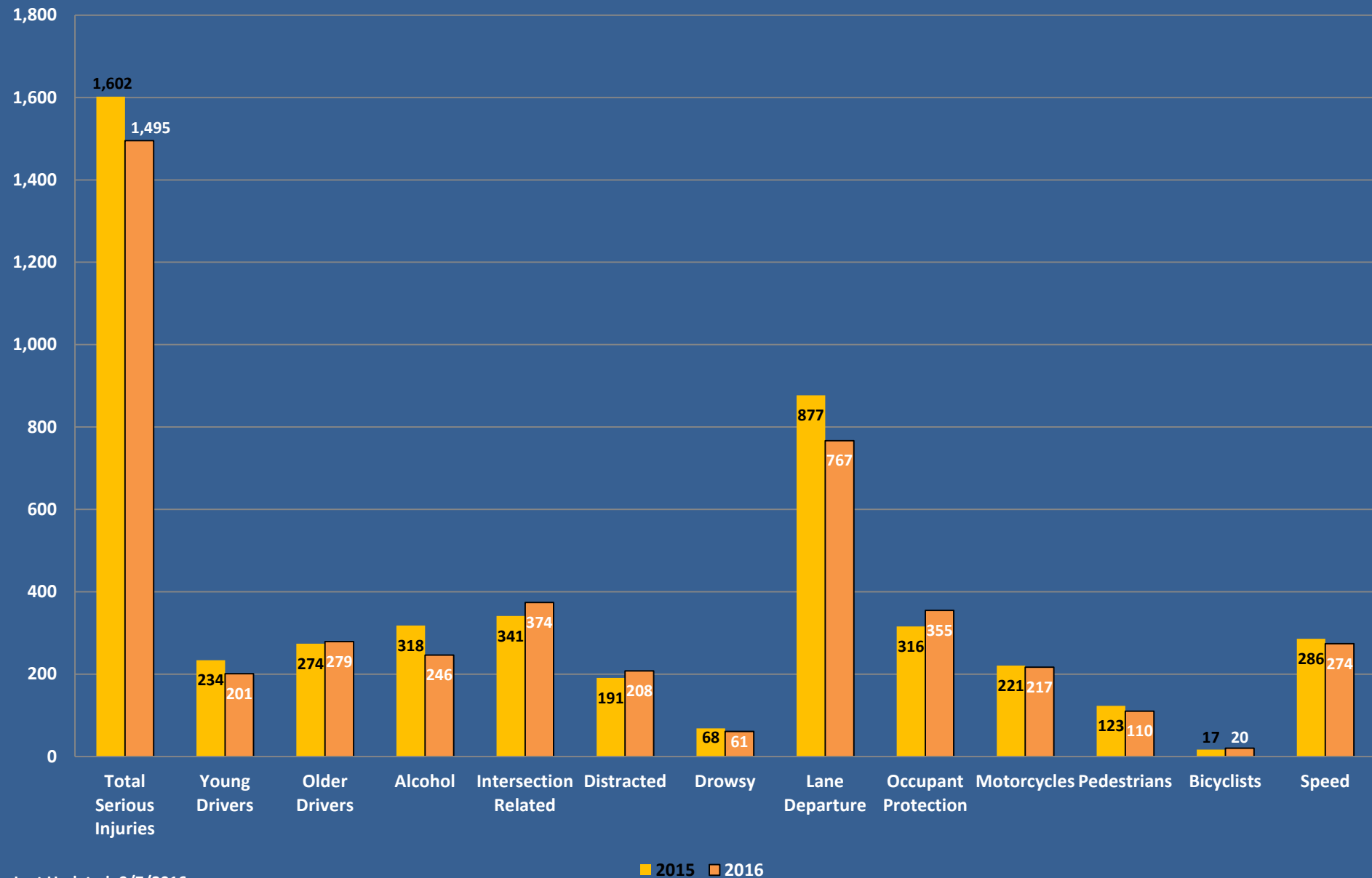


# North Carolina Serious Injuries (A Type Injury - Disabling) Trends Since 2002



Last Updated: 9/7/16

# Year to Date (January-August) Serious Injuries



Last Updated: 9/7/2016



