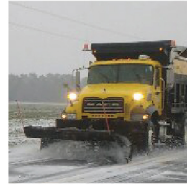
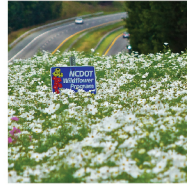


NORTH CAROLINA

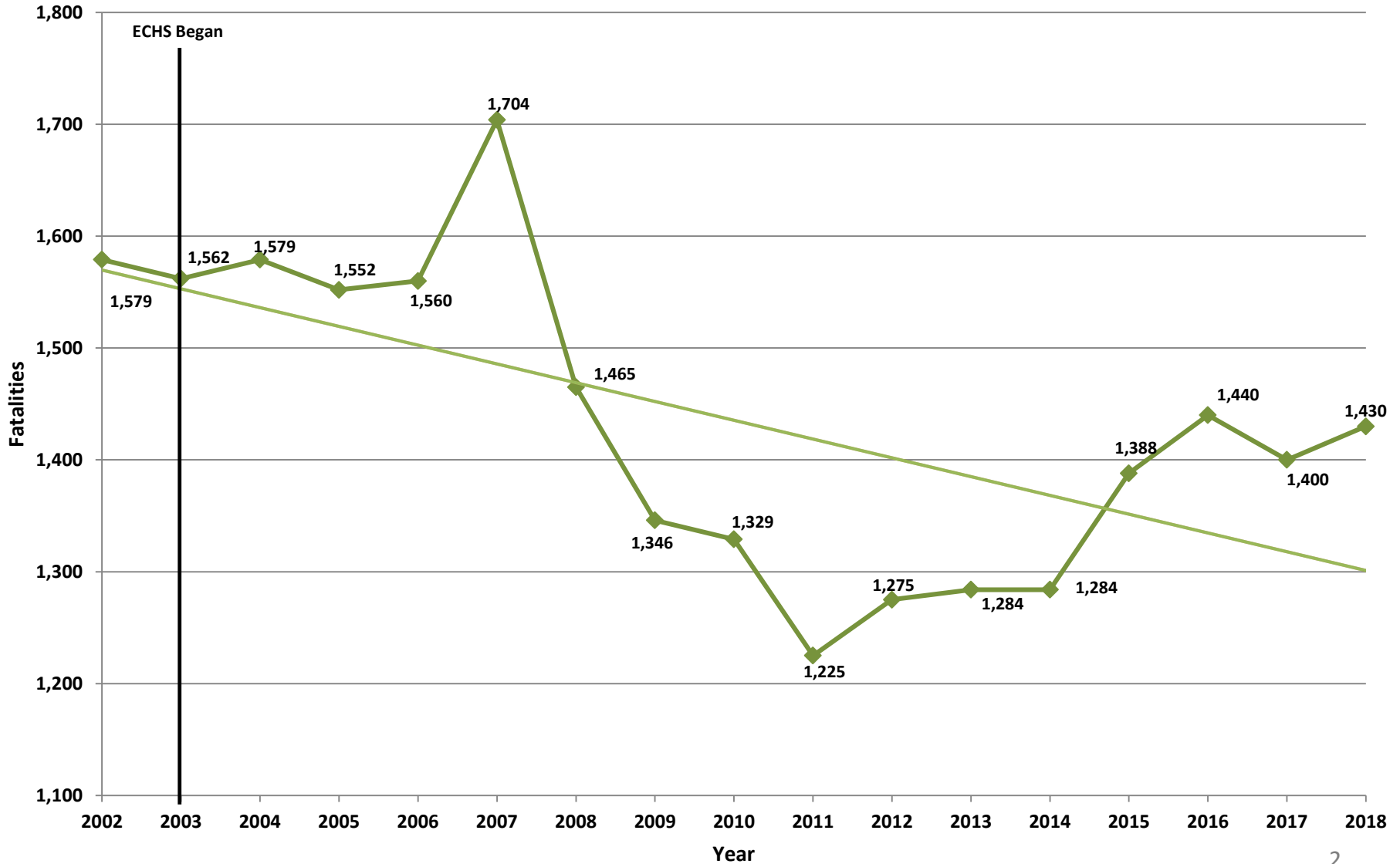
Department of Transportation



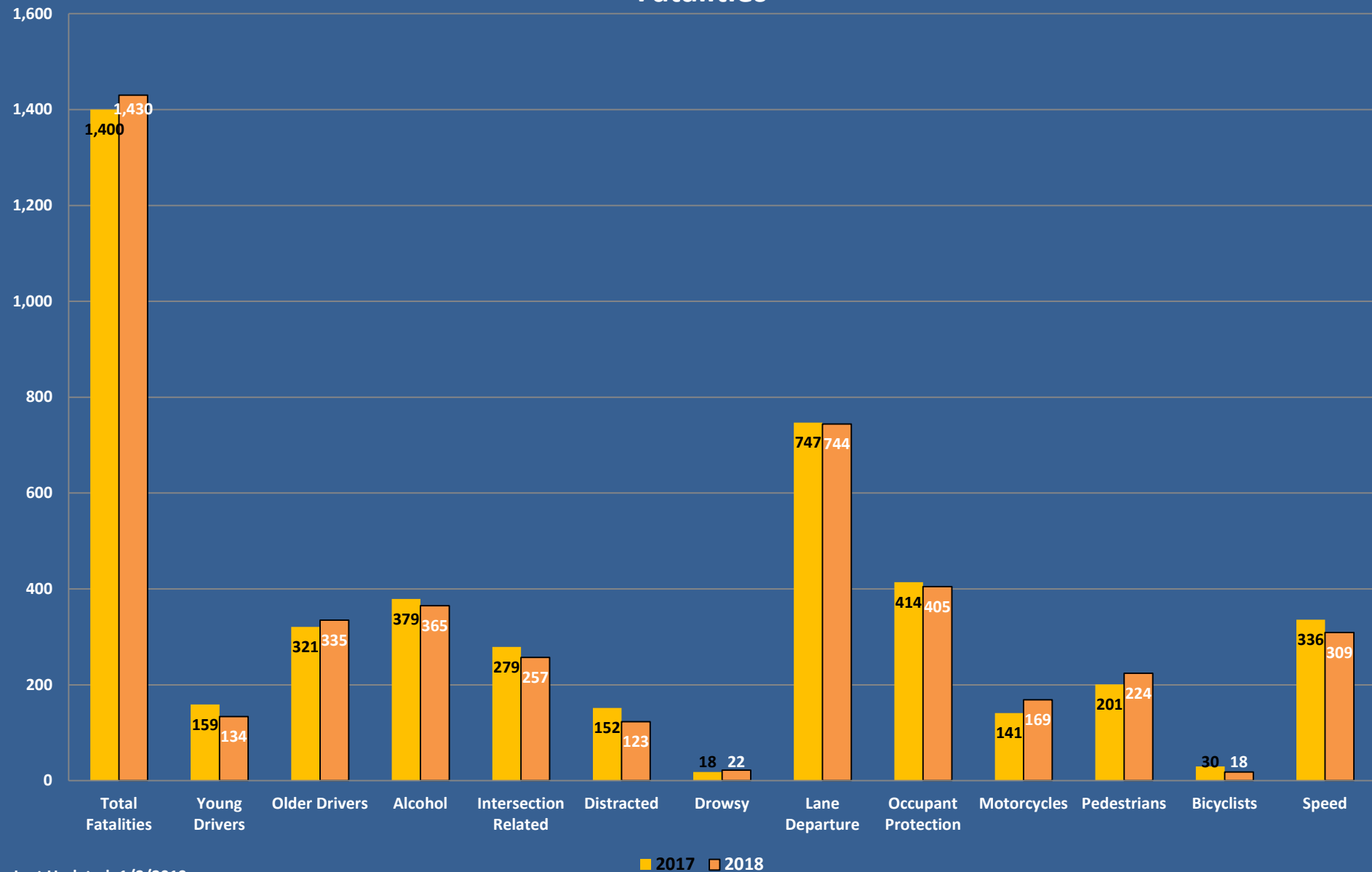
Fatal and Serious Injury Trend Update

January 11, 2019

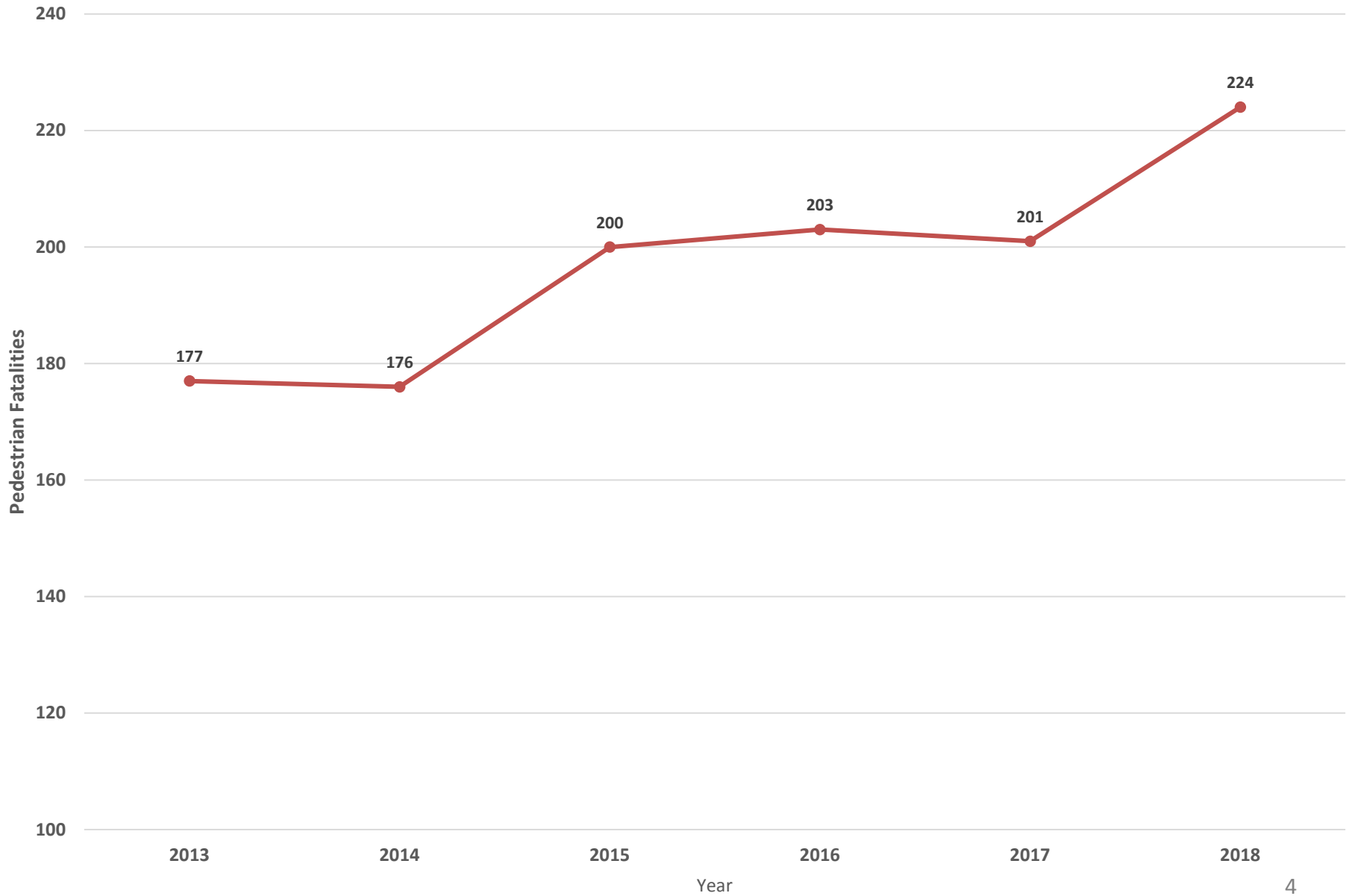
North Carolina Fatalities Trends Since 2002



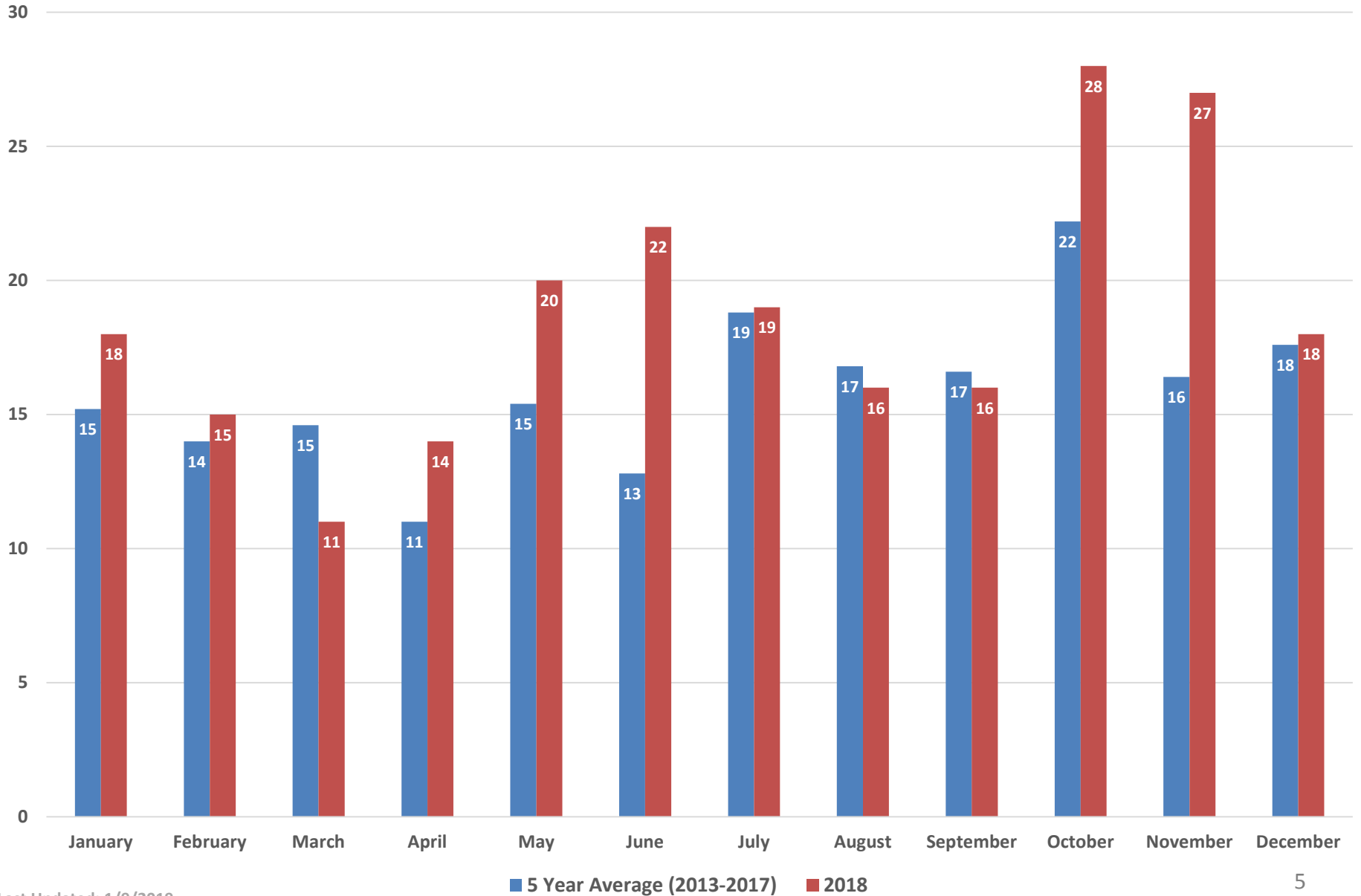
Year to Date (January-December) Fatalities



North Carolina Pedestrian Fatalities



Pedestrian Fatalities by Month

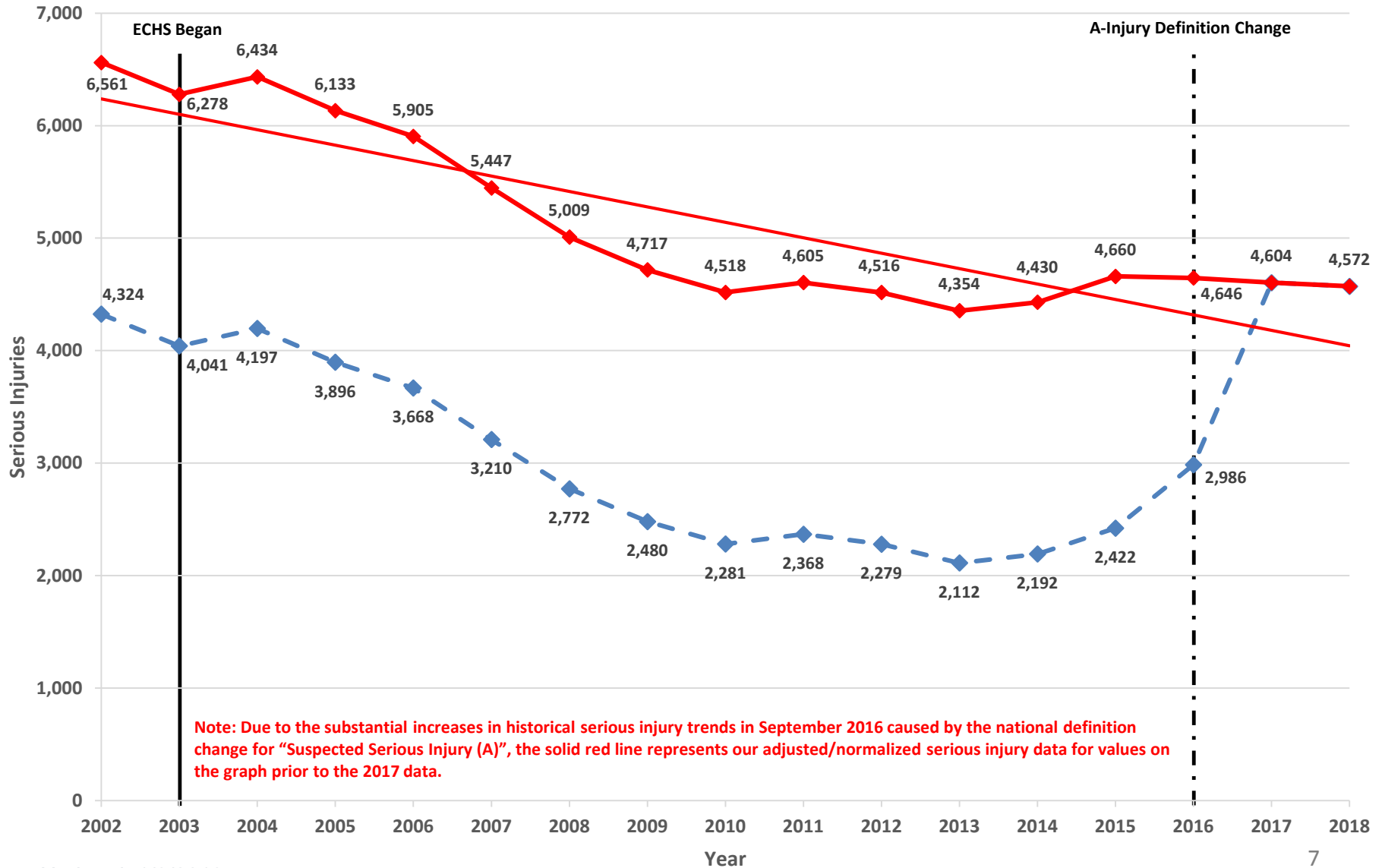


Pedestrian Fatalities Crash Facts

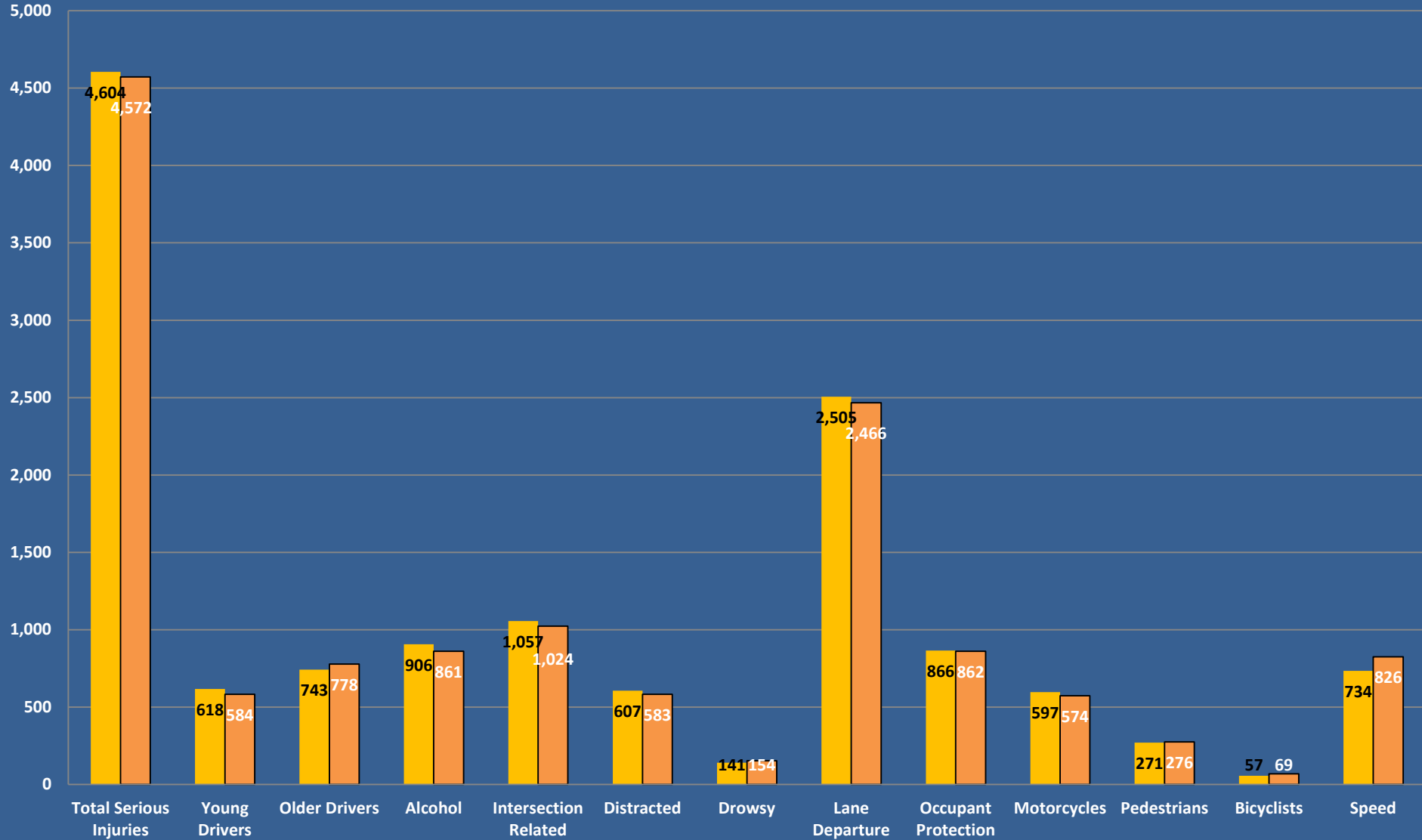
From January 1, 2013 to December 31, 2018

- 72% of the pedestrian fatalities occurred during clear weather conditions
- 78% of the pedestrian fatalities occurred at night and primarily between the hours of 7:00pm – 1:59am
- 56% of the pedestrian fatalities occurred in an urban (inside city limits) location
- The majority of the pedestrian fatalities occurred on 2 lane roadway segments (45%), followed by 4 lane (23%) and 5 lane (13%) segments
- Alcohol use by the pedestrian was suspected in 30% of the pedestrian fatalities
- The majority of the pedestrian fatalities occurred on roadway segments with a posted speed limit of 40-49 mph (32%), followed by 50-59 mph (30%) and 30-39 mph (19%)

North Carolina Serious Injuries (A Type Injury - Disabling) Trends Since 2002



Year to Date (January-December) Serious Injuries



2017 2018