



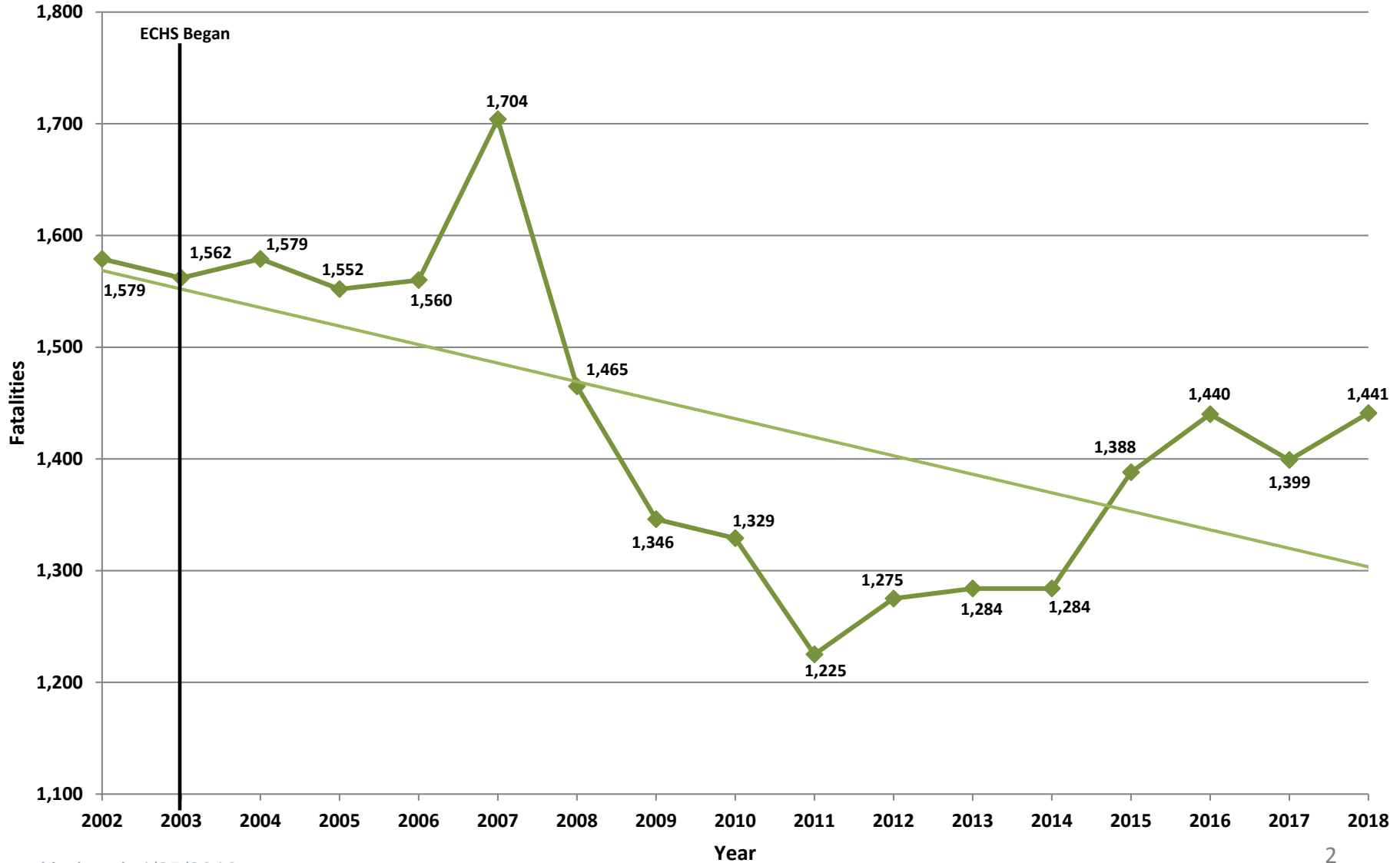
**NORTH CAROLINA**  
Department of Transportation



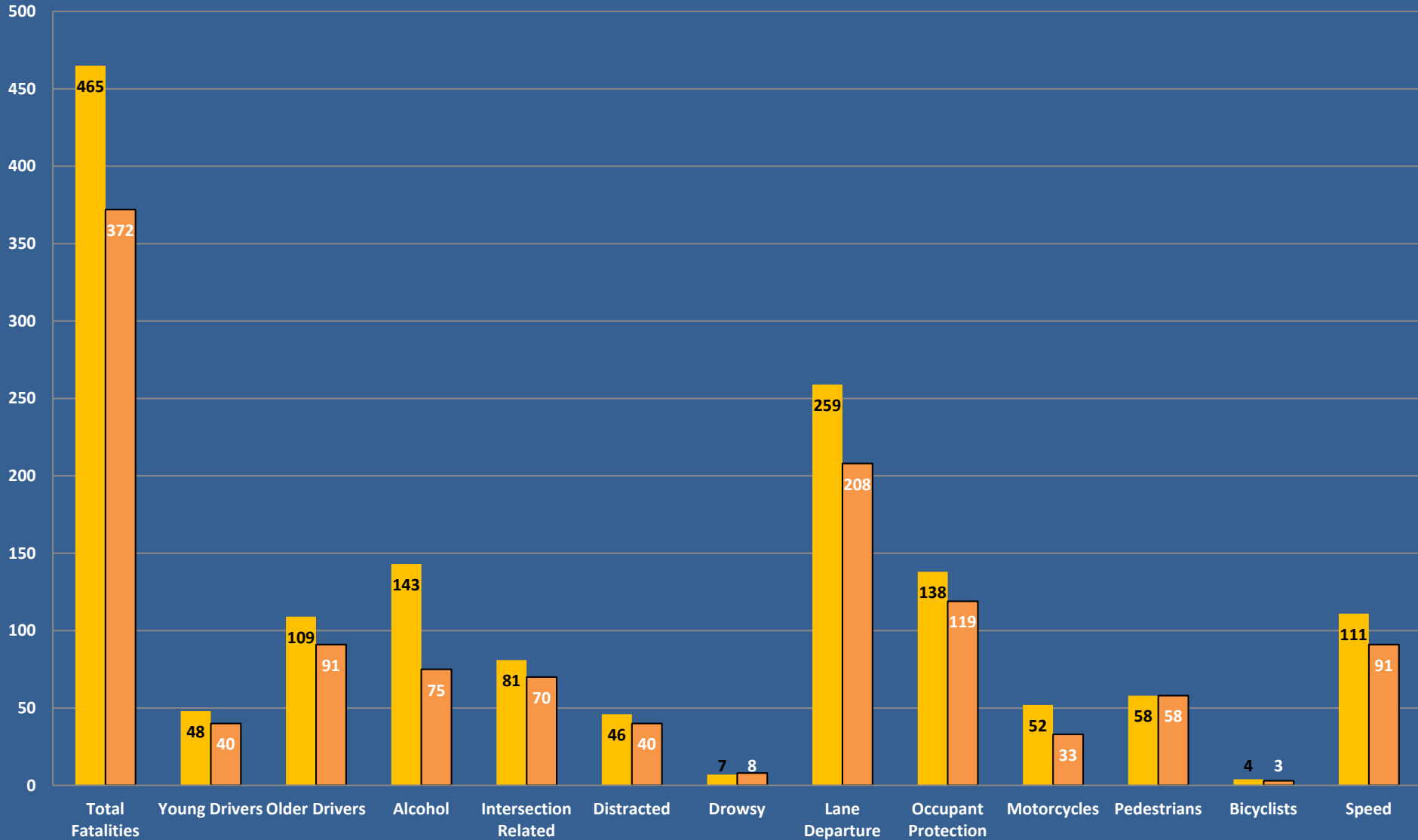
# Fatal and Serious Injury Trend Update

May 10, 2019

## North Carolina Fatalities Trends Since 2002

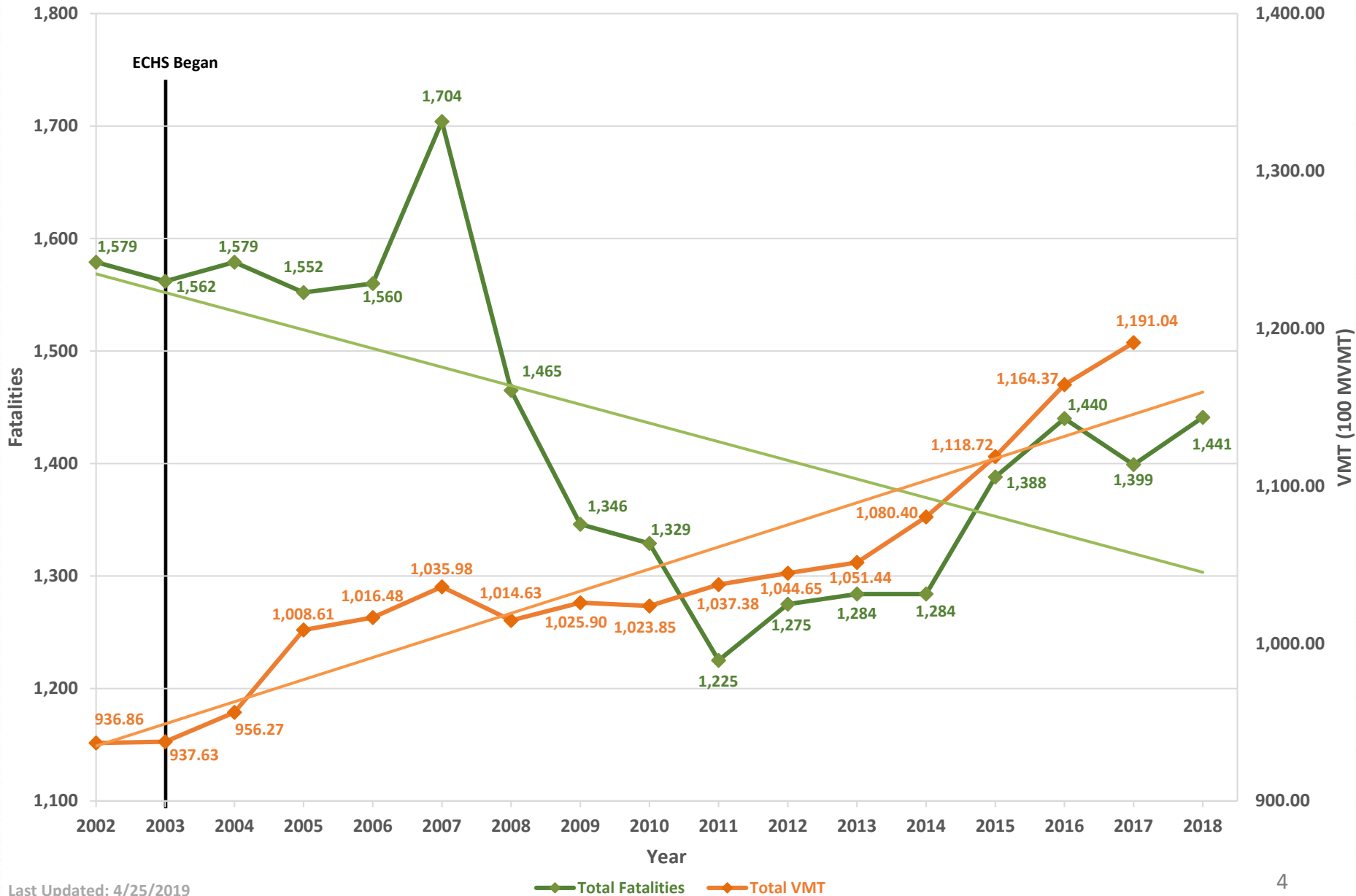


# Year to Date (January-April) Fatalities

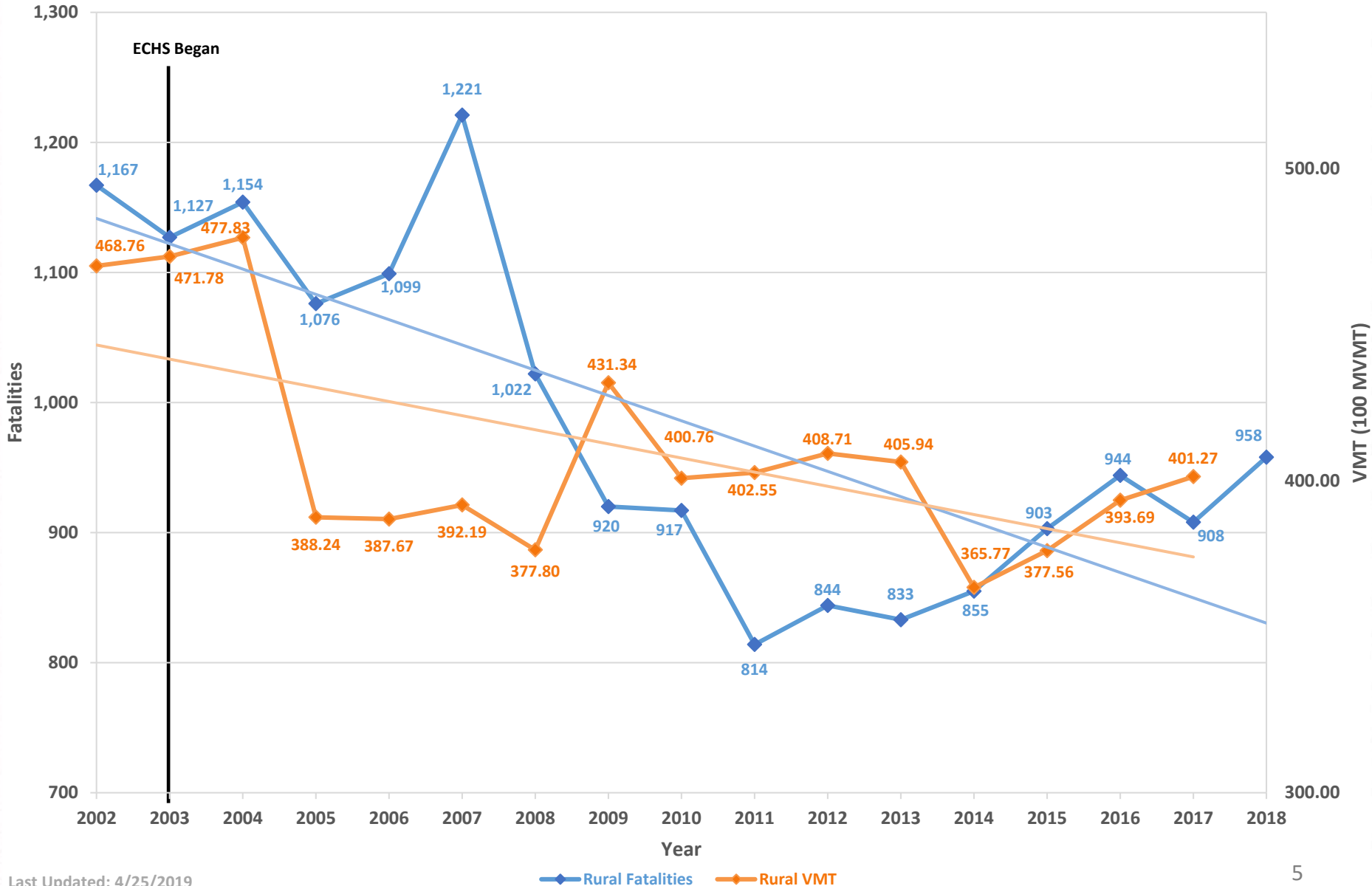


2018 2019

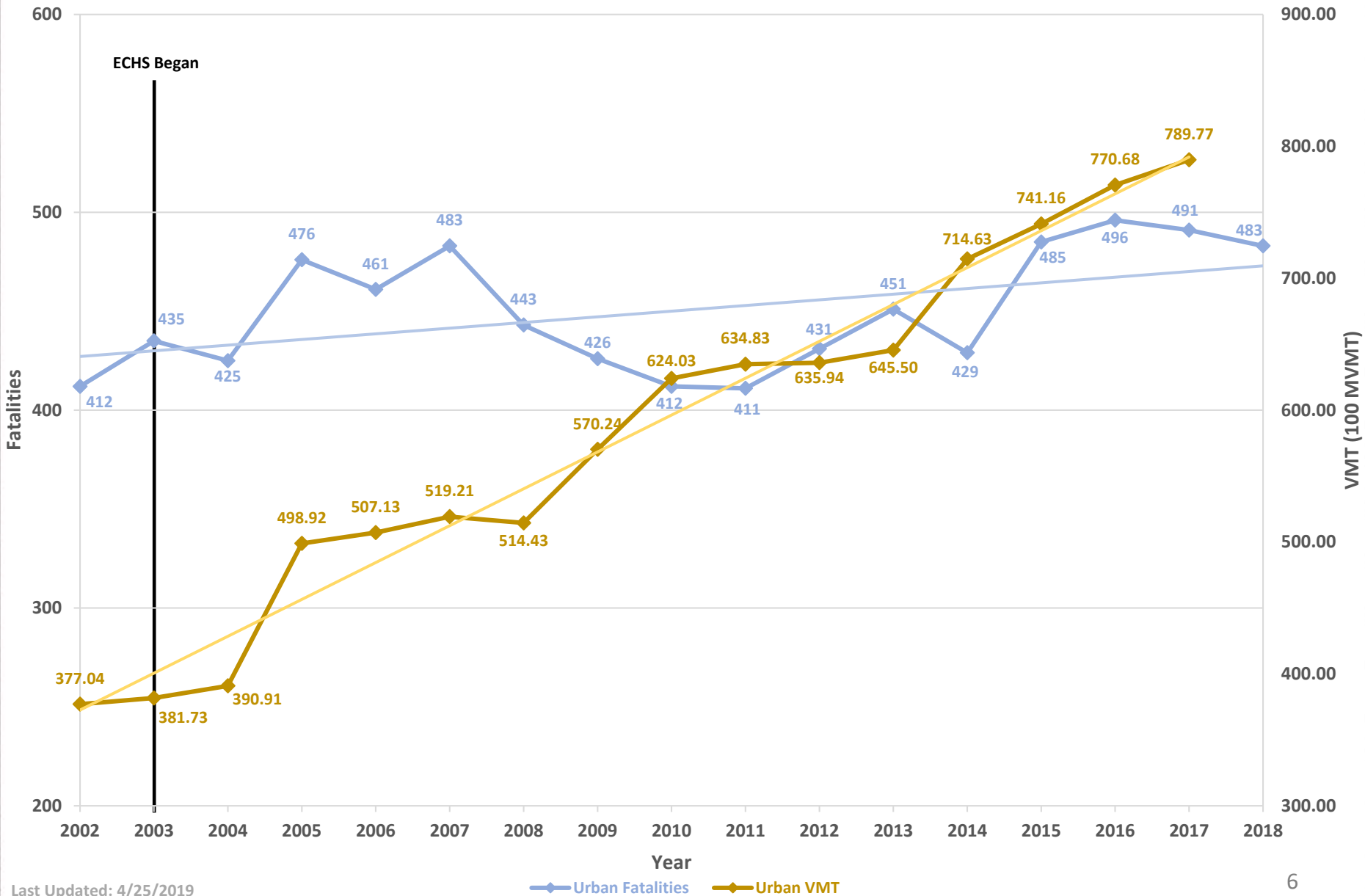
### North Carolina Total Fatalities vs Total VMT



# North Carolina Rural Fatalities vs Rural VMT



# North Carolina Urban Fatalities vs Urban VMT

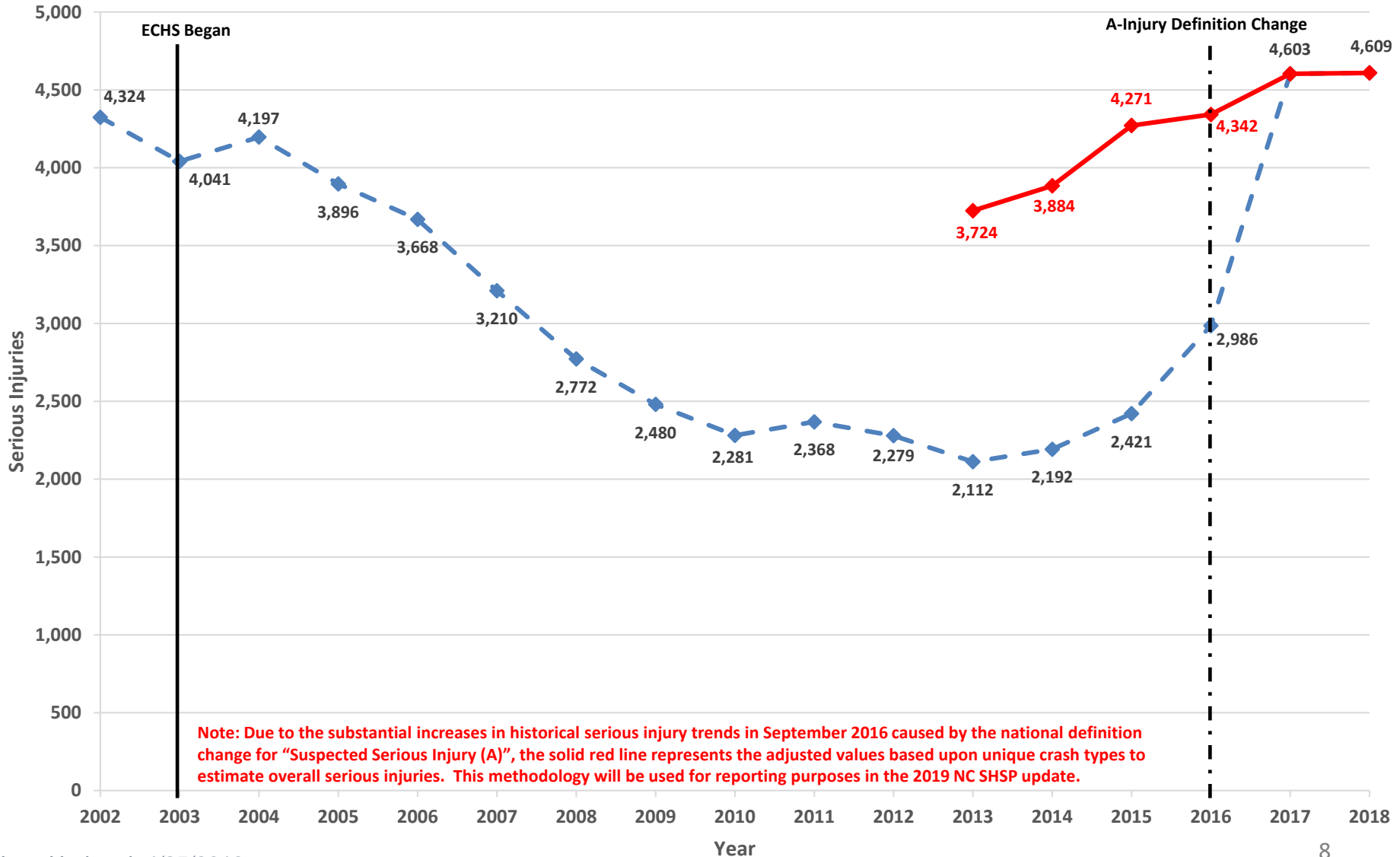


# North Carolina Fatalities Crash Facts

From January 1, 2002 to December 31, 2018

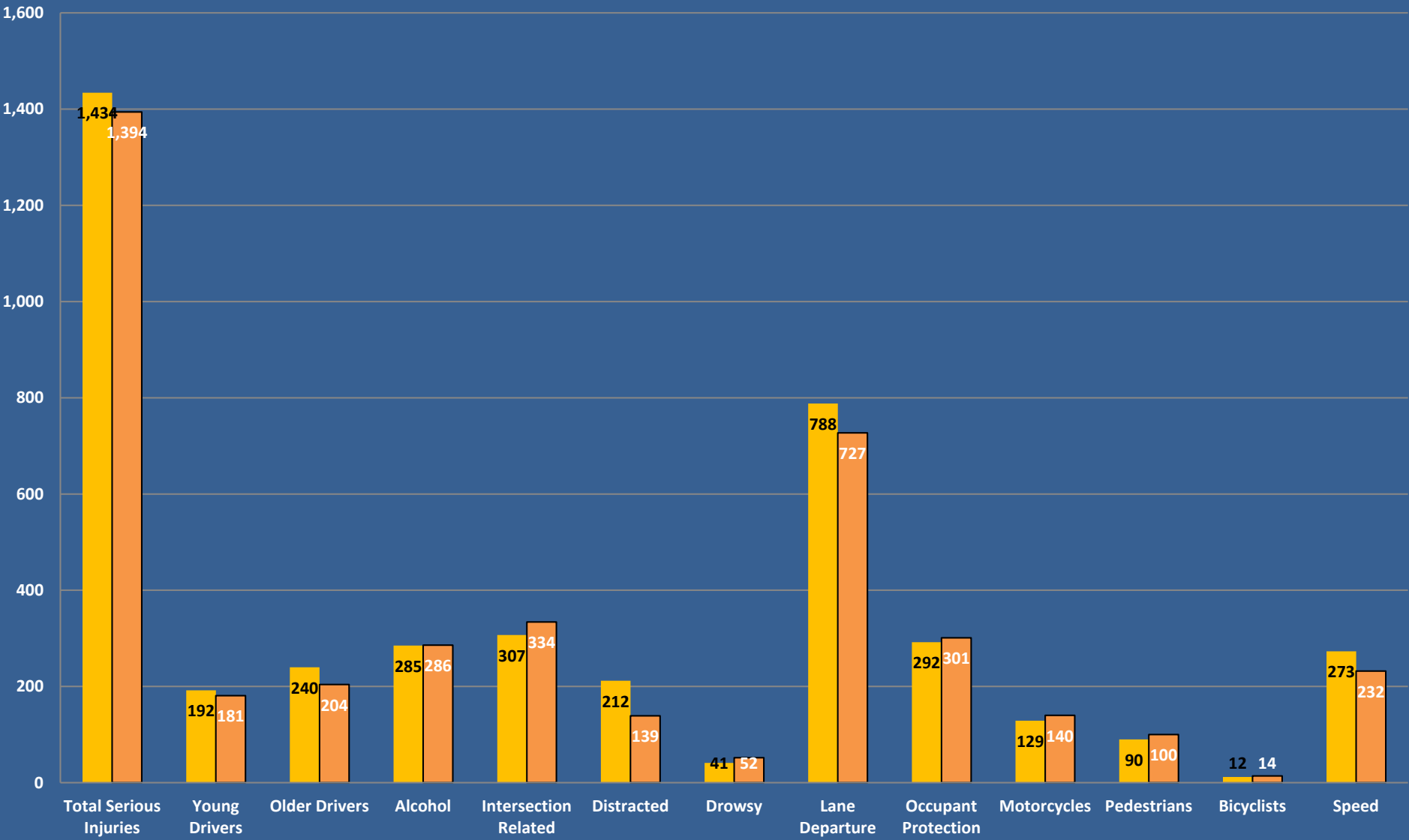
- 69% of the total fatalities occurred in a rural (outside city limits) location
- 31% of the total fatalities occurred in a urban (inside city limits) location
- 43% of the rural (outside city limits) fatalities occurred in the top 20 crash frequency counties (Robeson, Johnston, Wake, Harnett, Cumberland, Davidson, Columbus, Onslow, Guilford, Brunswick, Iredell, Randolph, Wayne, Nash, Sampson, Rowan, Buncombe, Catawba, Rockingham, Pitt)
- 49% of the urban (inside city limits) fatalities occurred in the top 10 crash frequency cities (Charlotte, Raleigh, Greensboro, Fayetteville, Winston Salem, Durham, Asheville, Wilmington, High Point, Gastonia)

## North Carolina Serious Injuries (A Type Injury - Disabling) Trends Since 2002





# Year to Date (January-April) Serious Injuries



2018 2019