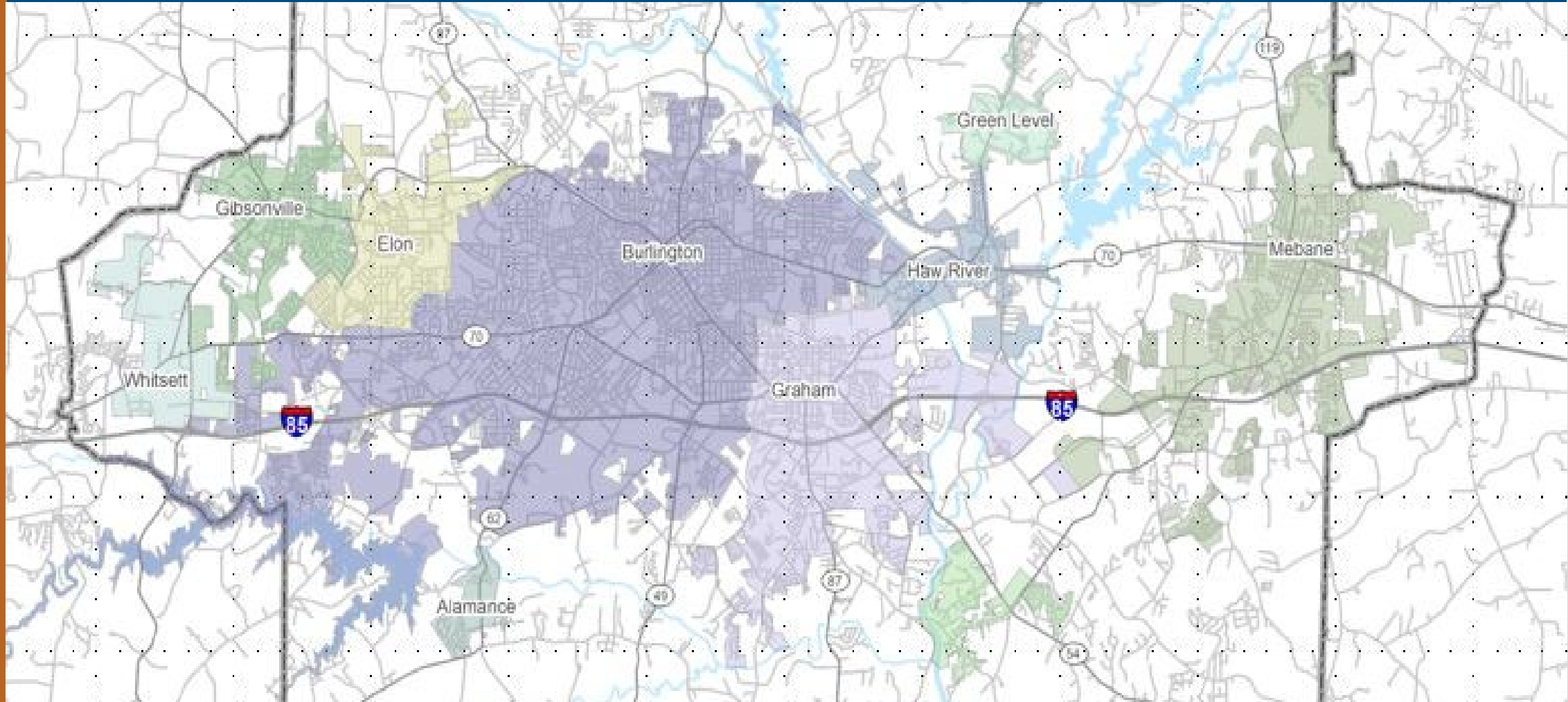


BGMPO Transportation Safety Plan Overview



Wannetta Mallette, PTP
MPO Administrator

January 2023

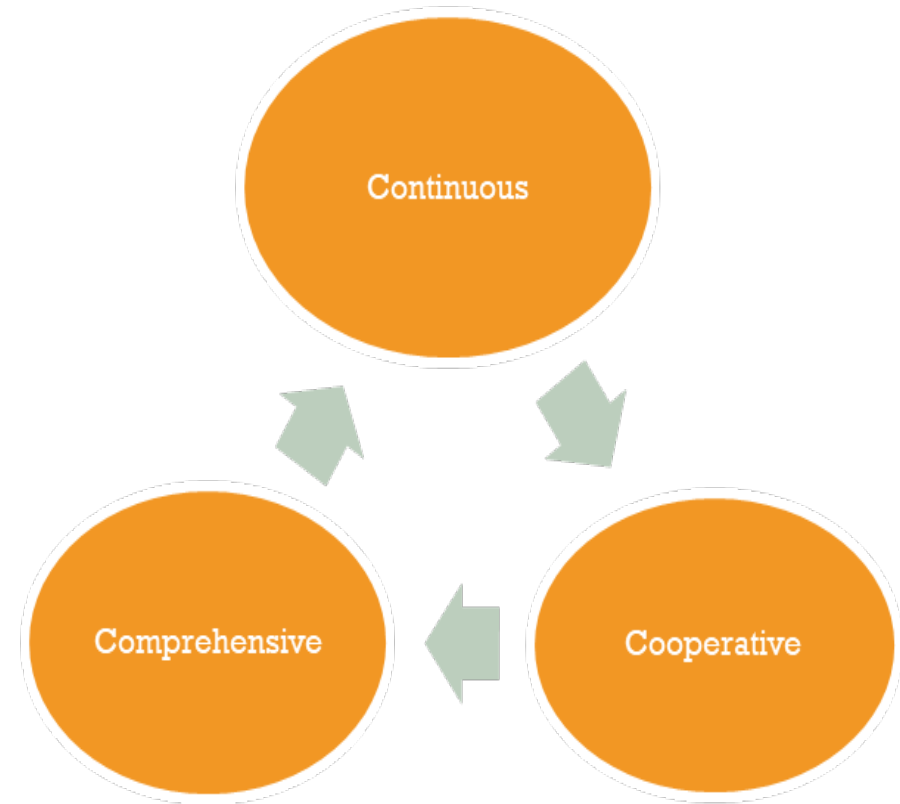
Agenda

- BGMPO Overview
- MPO 2022 Safety Measures and Plan Purpose
- Highway Safety Program Alignment
- Regional Stakeholders
- Transportation Safety Plan Development
- Outcomes/Next Steps

Metropolitan Planning Organization (MPO)

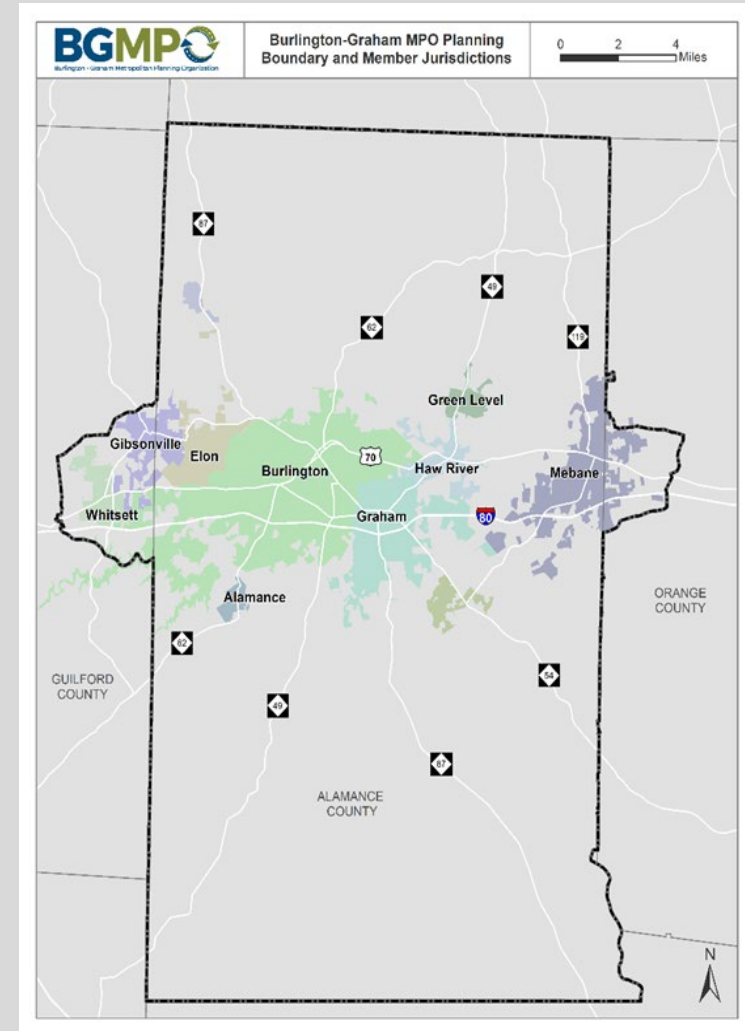
- MPOs are federally mandated public organizations responsible for conducting transportation planning activities in urbanized areas (UZAs) with populations over 50,000
- The BGMPO is one of 19 MPOs in NC

3-C Process



BGMPO Planning Boundary

- Local elected officials serve on the Transportation Advisory Committee (TAC) - “Regional Vision”
- Staff from member jurisdictions and stakeholder agencies serve on the Technical Coordinating Committee (TCC) – “Technical Recommendations”
- Citizen involvement and participation is vital to BGMPO activities and program implementation



BGMPO Safety Performance Overview

- MPO's are federally mandated to track safety performance for both highway and transit systems using 5-year crash data averages
- Five Highway Safety Performance Measures:
 - Fatalities
 - Fatality rate
 - Serious Injuries
 - Serious Injury Rate
 - Non-motorized Fatalities and Serious Injuries
- In 2020, BGMPO failed to reach its safety targets for all five performance measures

BGMPO Safety Performance

BGMPO Traffic Crash Data – 5 Year Average						
	2012 – 16	2013 – 17	2014 – 18	2015 – 19	2016 - 20	2022 Targets
Fatalities	18.2	20.0	19.8	21.0	23.4	18.8
Fatality Rate	0.977	1.045	1.005	1.051	1.205	0.935
Serious Injuries	34.6	44.6	57.0	74.6	94.2	69.1
Serious Injury Rate	1.858	2.307	2.869	3.694	4.828	3.415
Fatalities & Serious Injuries (Non-Motorized)	5.2	7.6	7.2	9.0	12.2	7.7

Purpose

- To provide in-depth analysis of traffic safety conditions and develop data-driven recommendations that advance traffic safety in our region
- Guide the MPO's decision-making process to develop its own highway and transit safety performance measures and targets or continue endorsement of state targets
- Establish an implementation baseline and evaluation framework for regional crash reduction efforts

Purpose Cont'd

- BGMPPO Highway Safety Program approved by TAC in October 2020
- Based on the five Es of traffic safety
- BGMPPO established guiding principles that serves as the basis for implementation:
 - Transparency
 - Shared Accountability
 - Equity
 - Data-Driven
 - Enhanced Community Engagement
 - Continual Evaluation
- Established Multidisciplinary Safety Subcommittee

Highway Safety Program Alignment

National Planning Factors

“Increase the safety of the transportation system for motorized and non-motorized users”

NCDOT Moves 2050, NC Highway Safety Plan and Vision Zero

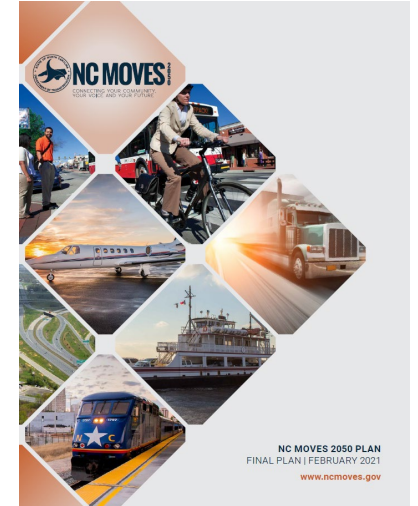
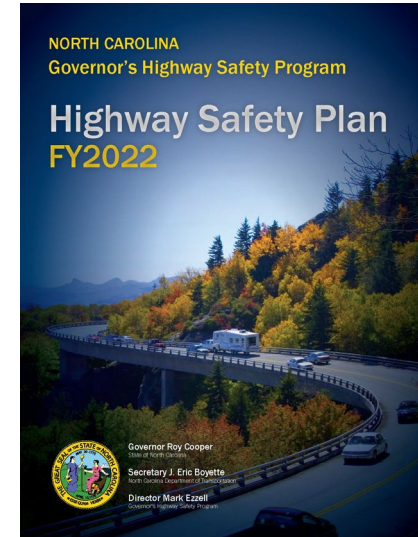
“Reduce fatalities and serious injuries by half by 2035, moving towards zero by 2050.”

BGMPO Metropolitan Transportation Plan (MTP)

“Burlington-Graham MPO seeks to develop a multimodal transportation network that supports a safe, vibrant and prosperous Burlington-Graham region where all residents have access to opportunities and a good quality of life, and where businesses can grow and thrive while natural and cultural resources are protected.”

Funding

BGMPO Transportation Safety Plan funded by the NCDOT Highway Safety Program



Project Team Members

- Brian Mayhew, Brian Murphy - NCDOT Traffic Safety Unit
- Andy Bailey, Pam Cook - NCDOT TPD
- Wannetta Mallette, Frankie Tran - BGMPO
- Eric Tang – VHB, Inc.

Burlington-Graham Metropolitan Planning Organization

Transportation Safety Plan

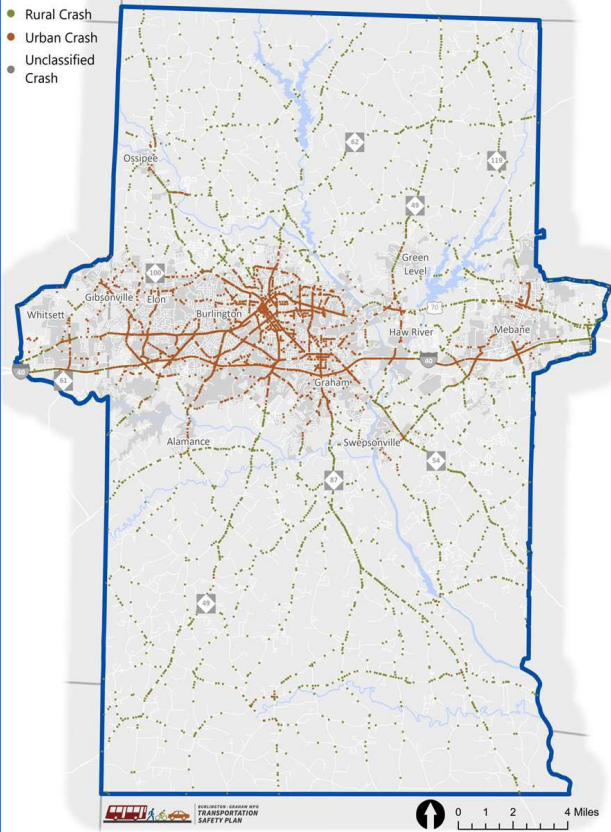


BURLINGTON - GRAHAM MPO
TRANSPORTATION
SAFETY PLAN

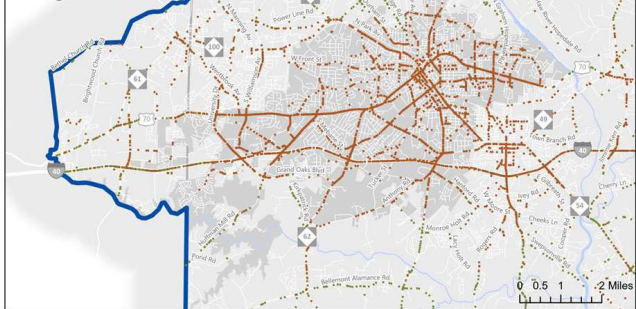
BGMP
Burlington - Graham Metropolitan Planning Organization

Crash Location

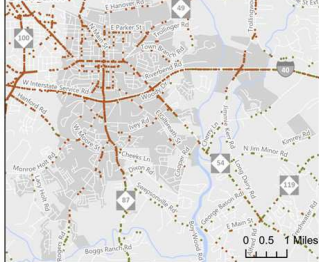
- Rural Crash
- Urban Crash
- Unclassified Crash



Burlington



Graham



Mebane



Alamance

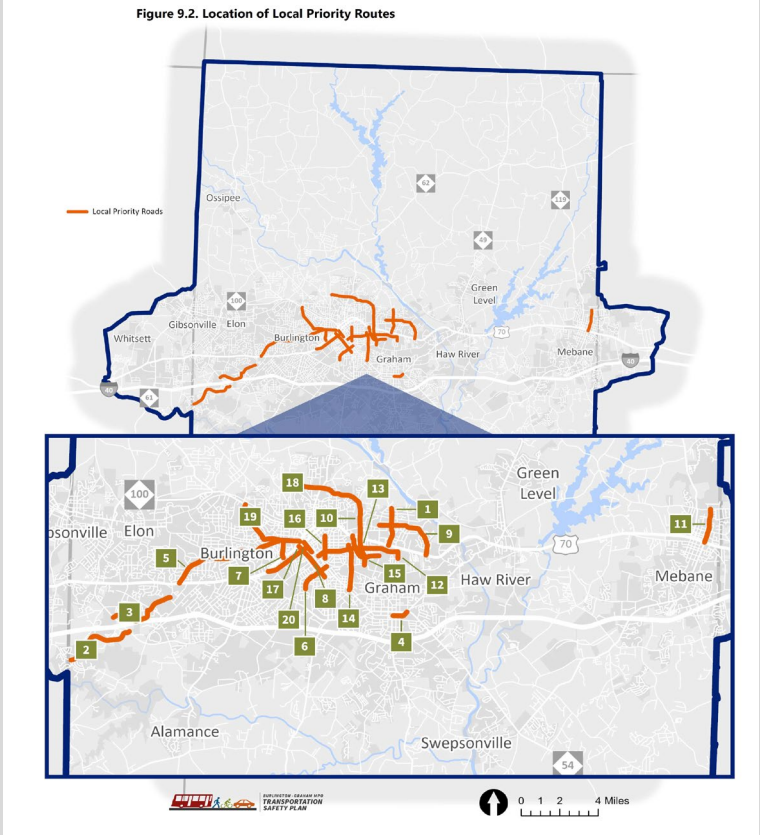
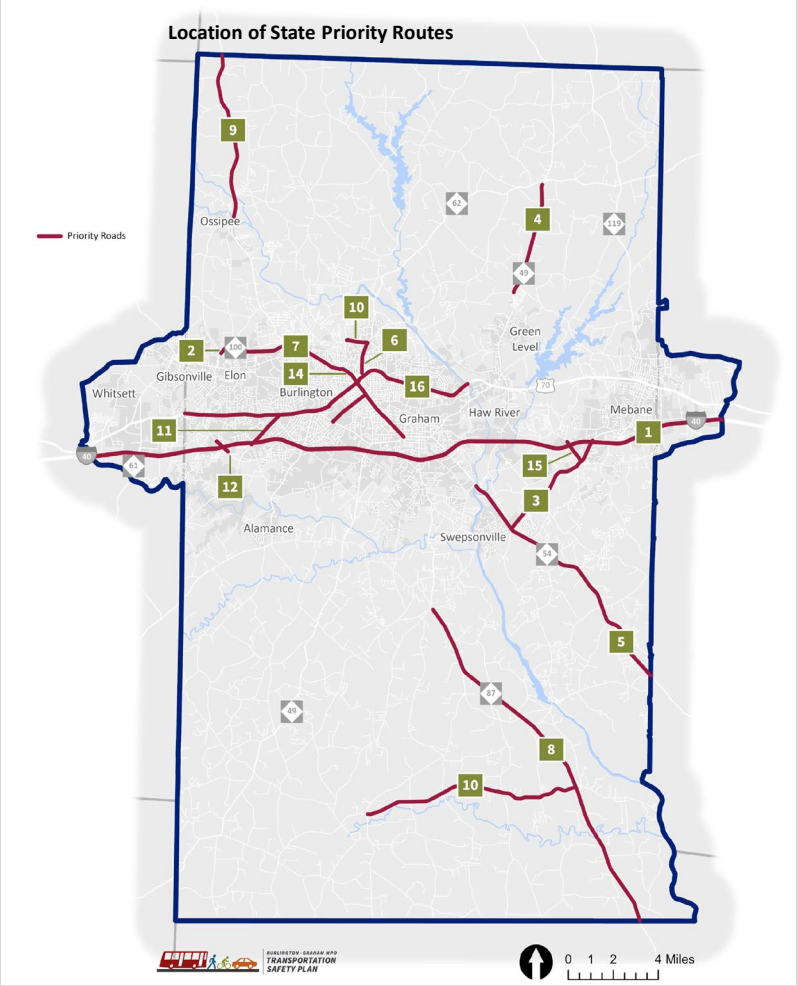


Ossiipee



Highway Priority Locations

3. Safe System Element: Safe Road Users <i>Continued...</i>						
Strategy/Action and Source of Strategy	Lead Agency	Partners	Priority Location	Timeline	Crash Modification Factor/Star Rating	Emphasis Area
2. Conduct community outreach to address impairment, restraint use, distraction, and young drivers <i>Continued...</i>						
2.2 Highlight campaigns on regional, county, city, and other stakeholders' websites. Source: NHTSA Countermeasures That Work	BGMPO	NC GHSP	Regionwide	Short	***	
2.3 Implement driver education programs to reduce aggressive and risky behavior by drivers. Source: NHTSA Countermeasures That Work	NC GHSP	County Health Departments	Regionwide	Short	*	
2.4 Address youth alcohol and drug use and driving and restrict minor access to alcohol. Source: NHTSA Countermeasures That Work	NC DHHS	County Health Departments	Regionwide	Short	***	
2.5 Implement outreach campaigns that address non-motorized users of the transportation system about their conspicuity. Source: NHTSA Countermeasures That Work	NC GHSP		Regionwide	Short	***	



Bus Stop Enhancements

- Appendix A – Memo for selecting bus stops and recommended countermeasures
- Prioritization
 - High Injury Network
 - Crash History
 - Emphasis Areas
 - Equity
 - Ridership
- Recommended Countermeasures
 - Sidewalks
 - High Visibility Crosswalks
 - HAWK Signal
 - Lighting

Priority Bus Stop Locations

Stop ID	Stop Name	HIN ¹	Crash History ²	Emphasis Areas	Equity ³	Ridership ⁴
107	W. Webb Ave @ Lakeview Ave (IB)	Yes	1 Serious Injury	Alcohol	USDOT	20
126	Sharpe Rd @ Morgantown Rd (OB)	Yes	1 Fatal and 1 Serious Injury	Alcohol, Drug, Speed, Intersection, Teen	USDOT / NCDOT	20
128	Rauhut St @ Sharpe Family Dollar (OB)	Yes	1 Fatal and 1 Serious Injury	Alcohol, Drug, Speed, Intersection, Teen	USDOT / NCDOT	0
138	N. Mebane St @ Walmart (OB)	Yes	1 Property Damage Only	None	USDOT / NCDOT	556
157	N. Mebane St @ S. Beaumont Ave (OB)	Yes	1 Minor Injury	Intersection	USDOT	21
188	N. Mebane St @ Walmart (IB)	Yes	1 Property Damage Only	None	USDOT / NCDOT	385
206	E. Webb Ave @ Gilmer St (IB)	Yes	2 Moderate Injury	Intersection	USDOT / NCDOT	112
385	Durham @ James Dr (IB)	Yes	1 Minor Injury	None	USDOT	20

¹ HIN defined as the Bicycle, Pedestrian, and Other Non-Motorized High Injury Network (2016-2020)

² Crash history from the 5-year 2016–2020 period

³ Equity is regarding USDOT TDCT and NDOT Transportation Disadvantaged Index – High Scoring Block Groups

⁴ Transit stop ridership based on July 2022 reported ridership

Table A.1. Priority Bus Stop Locations

Outcomes/Next Steps

- First regional safety plan in NC
- TAC approved Complete Streets and Vision Zero Resolutions
- BGMPPO NC Vision Zero state and regional committees' membership
- Safety Subcommittee strategic planning workshops
- TSP meets SS4A action plan requirements/state and federal grant applications

Thank You
Questions?



Burlington-Graham Metropolitan
Planning Organization

Wannetta Mallette, PTP

BGMPO

www.bgmpo.org (336) 513-5418