



STATE OF NORTH CAROLINA  
DEPARTMENT OF TRANSPORTATION

BEVERLY EAVES PERDUE  
GOVERNOR

EUGENE A. CONTI, JR.  
SECRETARY

**\*Addendum\***

DATE: Tuesday, June 26, 2012

PROJECT: BK-5114 / WBS 42561.1.3 / DO00153 / Mecklenburg County Replacement of  
Bridge No. 59

The following addendum is hereby made part of the contract:

- Payment for *Seeding and Mulching* will be included in the LS bid price for *Generic Erosion Control*.
- Preliminary Plan stamp has been removed from sheet S-2 & TMP-2. See attached sheets.

Cc:  
Prospective Bidders  
File

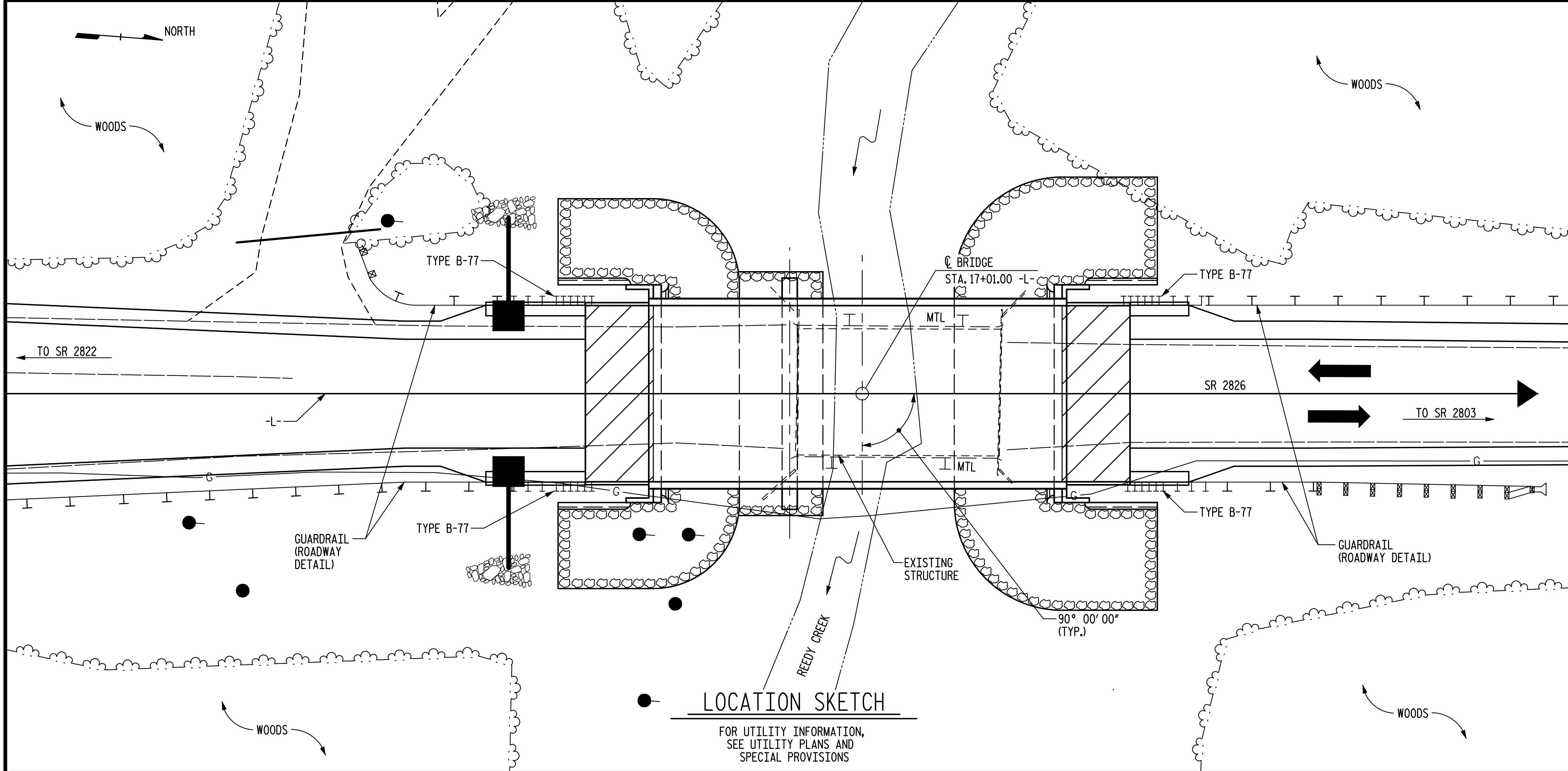
**MAILING ADDRESS:**  
NC DEPARTMENT OF TRANSPORTATION  
STRUCTURE MANAGEMENT UNIT  
1581 MAIL SERVICE CENTER  
RALEIGH NC 27699-1581

TELEPHONE: 919-707-6400  
FAX: 919-250-4082

WEBSITE: [www.ncdot.org](http://www.ncdot.org)

**LOCATION:**  
CENTURY CENTER COMPLEX  
BUILDING A  
1000 BIRCH RIDGE DRIVE  
RALEIGH NC 27610

BENCH MARK: B.M. #2 - 60-D NAIL IN 75" LAUREL OAK, 138.30' LT OF STA. 16+21.67 -L-, EL. 632.81.



NOTES (CONT.)

ASPHALT WEARING SURFACE IS INCLUDED IN ROADWAY QUANTITIES.  
 FOR SUBMITTAL OF WORKING DRAWINGS, SEE SPECIAL PROVISIONS.  
 FOR CRANE SAFETY, SEE SPECIAL PROVISIONS.  
 FOR GROUT FOR STRUCTURES, SEE SPECIAL PROVISIONS.

LOCATION SKETCH

FOR UTILITY INFORMATION,  
 SEE UTILITY PLANS AND  
 SPECIAL PROVISIONS

TOTAL BILL OF MATERIAL

	REMOVAL OF EXISTING STRUCTURE AT STATION 17+01.00 -L-	FOUNDATION EXCAVATION	UNCLASSIFIED STRUCTURE EXCAVATION	BRIDGE APPROACH FILL SUBREGIONAL TIER	CLASS A CONCRETE	BRIDGE APPROACH SLABS	REINFORCING STEEL (BRIDGE)	SPIRAL COLUMN REINFORCING STEEL	HP 12 X 53 GALVANIZED STEEL PILES	STEEL PILE POINTS	CONCRETE BARRIER RAIL	RIP RAP CLASS II	GEOTEXTILE FOR DRAINAGE	ELASTOMERIC BEARINGS	3'-0" X 1'-9" PRESTRESSED CONCRETE CORED SLABS		
	LUMP SUM	LUMP SUM	LUMP SUM	LUMP SUM	CU. YD.	LUMP SUM	LB.	LB.	NO.	LIN. FT.	NO.	LIN. FT.	SQ. YD.	LUMP SUM	NO.	LIN. FT.	
SUPERSTRUCTURE											180.25				28	1,260	
END BENT 1					14.4		2,510		7	175	7		391				
BENT 1					71.6		10,310	975									
END BENT 2					14.4		2,510		7	105	7		377				
TOTAL	LUMP SUM	LUMP SUM	LUMP SUM	LUMP SUM	100.4	LUMP SUM	15,330	975	14	280	14	180.25	691	768	LUMP SUM	28	1,260

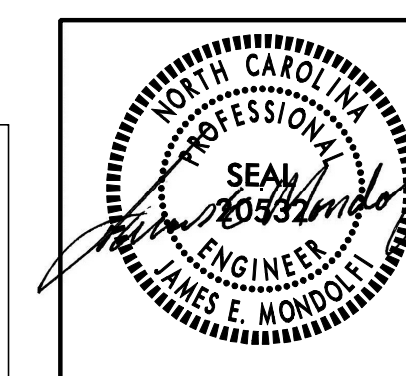
REMOVED "PRELIMINARY PLANS" STAMP

PROJECT NO. 42561  
 COUNTY: MECKLENBURG  
 STATION: 17+01.00 -L-

SHEET 2 OF 2

STATE OF NORTH CAROLINA  
 DEPARTMENT OF TRANSPORTATION  
 RALEIGH

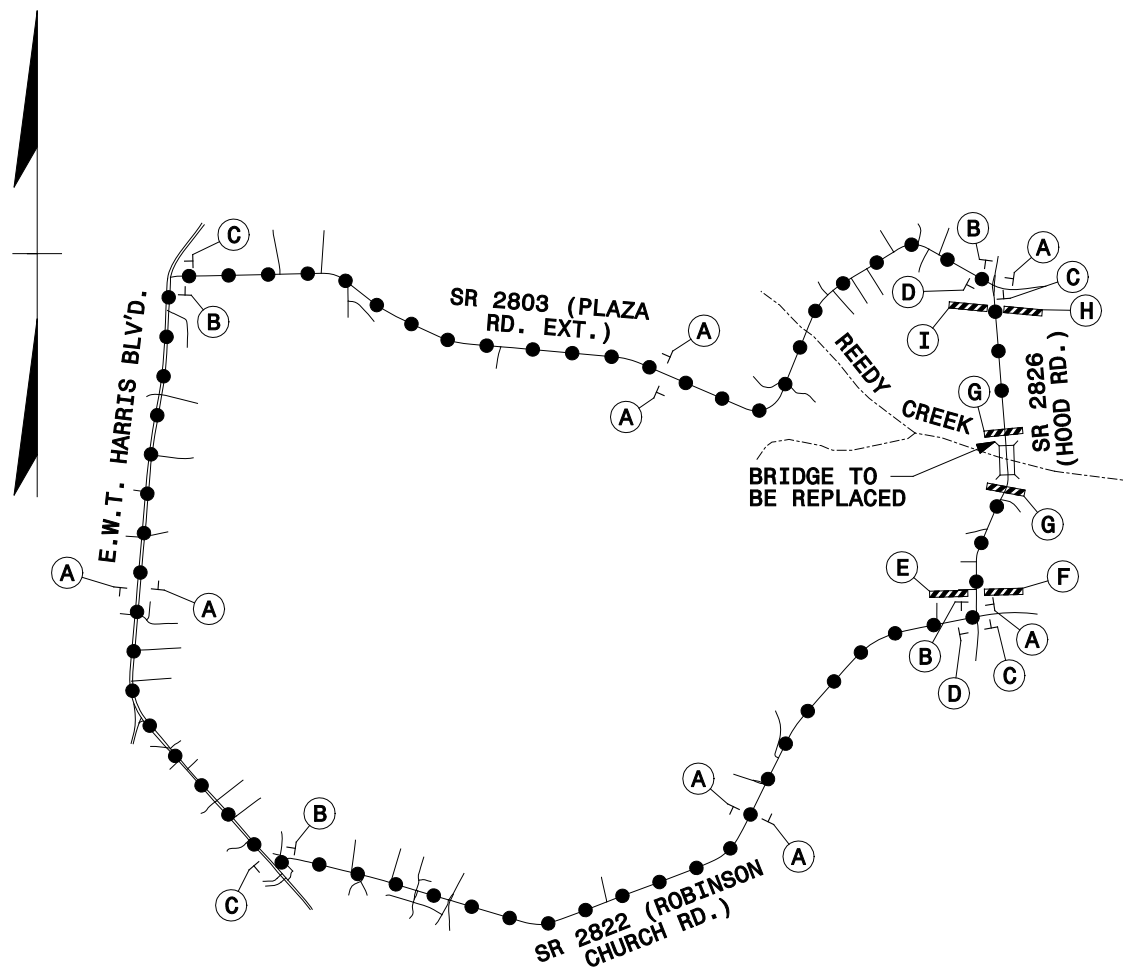
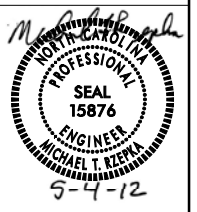
BRIDGE NO. 59 ON SR 2826  
 OVER REEDY CREEK



REVISIONS						SHEET NO.	
NO.	BY	DATE	NO.	BY	DATE	S-2	
1	JEM	6-26-12	3			TOTAL SHEETS	
2			4			14	

6/26/2012 10:05:10 AM 1000785.ctb C:\Users\jeh\Documents\Florence & Hutcheson - An ICA Company

DRAWN BY: D.H. CARTER DATE: MAY 2012  
 CHECKED BY: J.E. MONDOLFI DATE: MAY 2012



SIGN NUMBER: name  
 TYPE: D  
 QUANTITY: SEE PLANS  
 SIGN WIDTH: 4'-0"  
 HEIGHT: 1'-6"  
 TOTAL AREA: 6.0 Sq.Ft.  
 BORDER TYPE: INSET  
 RECESS: 0.375"  
 WIDTH: 0.63"  
 RADII: 1.5"  
 NO. Z BARS:  
 LENGTH:

BACKG COLOR: Fluorescent Orange  
 COPY COLOR: Black

SYMBOL	X	Y	WID	HT

MAT'L: 0.080" (2.0 mm) ALUMINUM

DESIGN BY: GEP  
 PROJECT ID: 42561  
 CHECKED BY: F & H  
 DIV: 10  
 DATE: Apr 03, 2012



BORDER  
 R=1.5"  
 TH=0.63"  
 IN=0.375"

USE NOTES: 1 & 2  
 1. Legend and border shall be direct applied black non-reflective sheeting.  
 2. Background shall be Type VII, VIII, or IX (prismatic) fluorescent orange retroreflective sheeting.

Spacing Factor is 1 unless specified otherwise

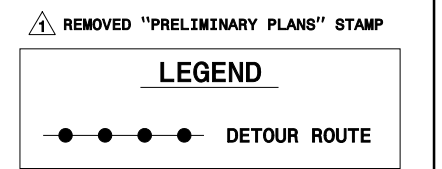
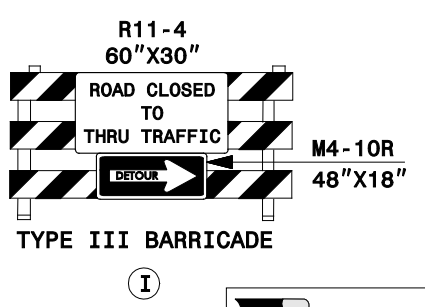
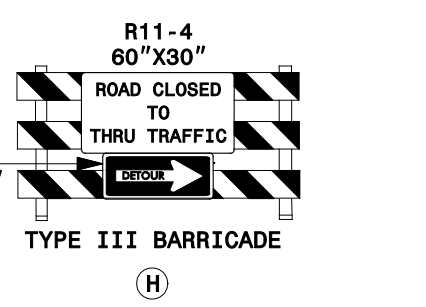
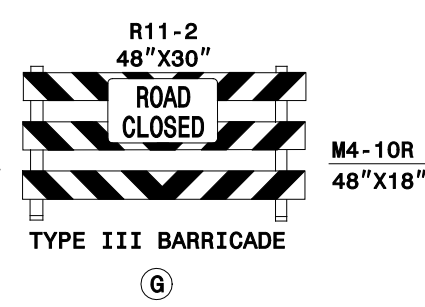
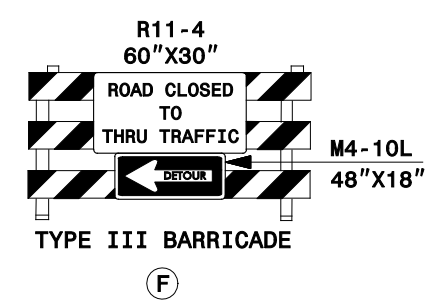
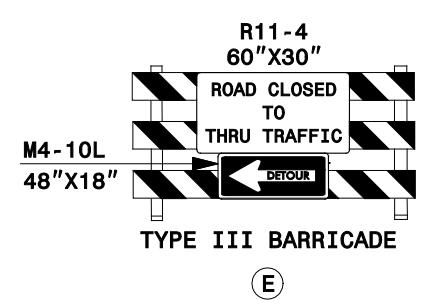
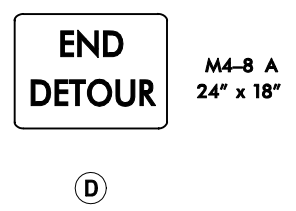
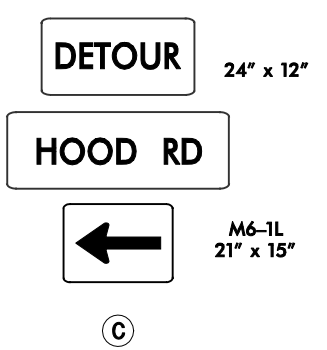
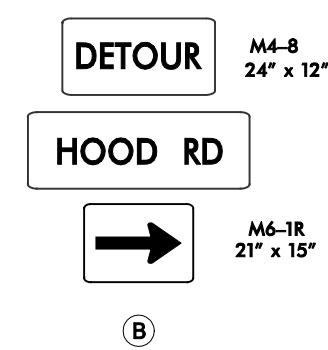
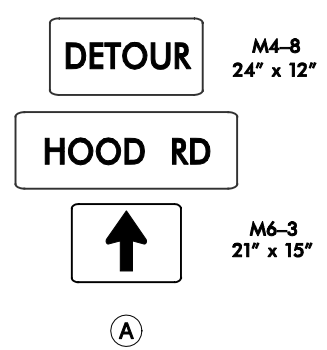
LETTER POSITIONS

Letter locations are panel edge to lower left corner

Letter	H	O	O	D	R	D	Series/Size	Text Length
	6.2	11.6	17	22.6	26.7	32.7	D 2000	35.7

FILENAME: DETOUR

NORTH CAROLINA D.O.T. SIGN DETAIL



PROJECT NO. 42561  
 COUNTY: MECKLENBURG  
 STATION: 17+01.00

STATE OF NORTH CAROLINA  
 DEPARTMENT OF TRANSPORTATION  
 RALEIGH

BRIDGE NO. 59 ON SR 2826  
 OVER REEDY CREEK

**FH** Florence & Hutcheson  
 CONSULTING ENGINEERS  
 5121 Kingdom Way, Suite 100 Raleigh, NC 27607  
 NC License No: P-0258

REVISIONS						SHEET NO.
NO.	BY	DATE	NO.	BY	DATE	TOTAL SHEETS
1	MTR	6-26-12	3			
2			4			

6/16/2012 10:41:00 AM C:\Users\meh\OneDrive\Documents\Projects\42561\Traffic\Control\TCP\DETOUR.dgn  
 Florence & Hutcheson, Inc.