

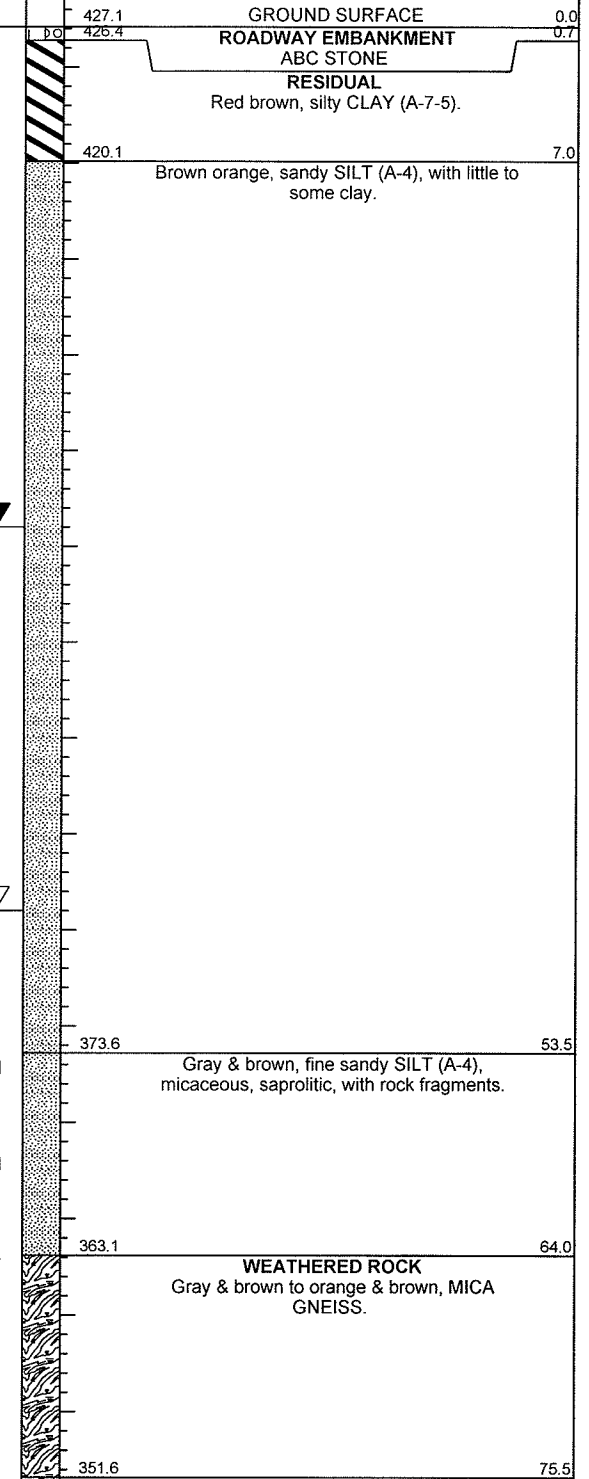


NCDOT GEOTECHNICAL ENGINEERING UNIT BORELOG REPORT

PROJECT NO. 36597.1.1		ID. I-4744		COUNTY Wake		GEOLOGIST P. Alton	
SITE DESCRIPTION I-40 Widening from W. of Wade Ave. to E. of Jones Franklin Rd.							GROUND WTR (ft)
BORING NO. B2-A EBL		STATION 271+45		OFFSET 39ft RT		ALIGNMENT -LREV-	0 HR. 46.1
COLLAR ELEV. 427.1 ft		TOTAL DEPTH 83.6 ft		NORTHING 734,073		EASTING 2,078,367	24 HR. 26.1
DRILL MACHINE CME 550		DRILL METHOD 2.25" ID HSA				HAMMER TYPE Automatic	
START DATE 06/03/09		COMP. DATE 06/03/09		SURFACE WATER DEPTH N/A		DEPTH TO ROCK 75.5 ft	

ELEV (ft)	DRIVE ELEV (ft)	DEPTH (ft)	BLOW COUNT			BLOWS PER FOOT					SAMP. NO.	MOI	LOG	SOIL AND ROCK DESCRIPTION		
			0.5ft	0.5ft	0.5ft	0	25	50	75	100				ELEV. (ft)	DEPTH (ft)	
430																
427.1															GROUND SURFACE	0.0
426.4															ROADWAY EMBANKMENT ABC STONE	0.7
420.1															RESIDUAL Red brown, silty CLAY (A-7-5).	7.0
415															Brown orange, sandy SILT (A-4), with little to some clay.	
410																
405																
400																
395																
390																
385																
380																
375																
373.6	373.6	53.5	6	11	20											
370																
368.6	368.6	58.5	9	19	41											
365																
363.6	363.6	63.5	21	45	55/0.4											
360																
358.6	358.6	68.5	100/0.3'													
355																
353.6	353.6	73.5	100/0.3'													
350																

NCDOT BORE SINGLE 66L-0104.GPJ NC_DOT_GDT 6/5/09





NCDOT GEOTECHNICAL ENGINEERING UNIT

BORELOG REPORT

PROJECT NO. 36597.1.1	ID. I-4744	COUNTY Wake	GEOLOGIST P. Alton
SITE DESCRIPTION I-40 Widening from W. of Wade Ave. to E. of Jones Franklin Rd.			GROUND WTR (ft)
BORING NO. B2-A EBL	STATION 271+45	OFFSET 39ft RT	ALIGNMENT -LREV-
COLLAR ELEV. 427.1 ft	TOTAL DEPTH 83.6 ft	NORTHING 734,073	EASTING 2,078,367
DRILL MACHINE CME 550		DRILL METHOD 2.25" ID HSA	
START DATE 06/03/09		COMP. DATE 06/03/09	
		SURFACE WATER DEPTH N/A	
		HAMMER TYPE Automatic	
		DEPTH TO ROCK 75.5 ft	

ELEV (ft)	DRIVE ELEV (ft)	DEPTH (ft)	BLOW COUNT			BLOWS PER FOOT					SAMP. NO.	LOG	SOIL AND ROCK DESCRIPTION	DEPTH (ft)	
			0.5ft	0.5ft	0.5ft	0	25	50	75	100					ELEV. (ft)
350															
	348.6	78.5													
			60/0.1									M			
345															
	343.6	83.5													
			60/0.1									M		343.5	83.6
340														Boring Terminated at Elevation 343.5 ft in CRYSTALLINE ROCK (MICA GNEISS)	
335														NOTES: 1) Augered to 53.5', began split spoon sampling. 2) Elevation obtained from original boring.	
330															
325															
320															
315															
310															
305															
300															
295															
290															
285															
280															
275															
270															

NCDOT BORE SINGLE 66L-0104.GPJ NC_DOT_GDT 6/5/09

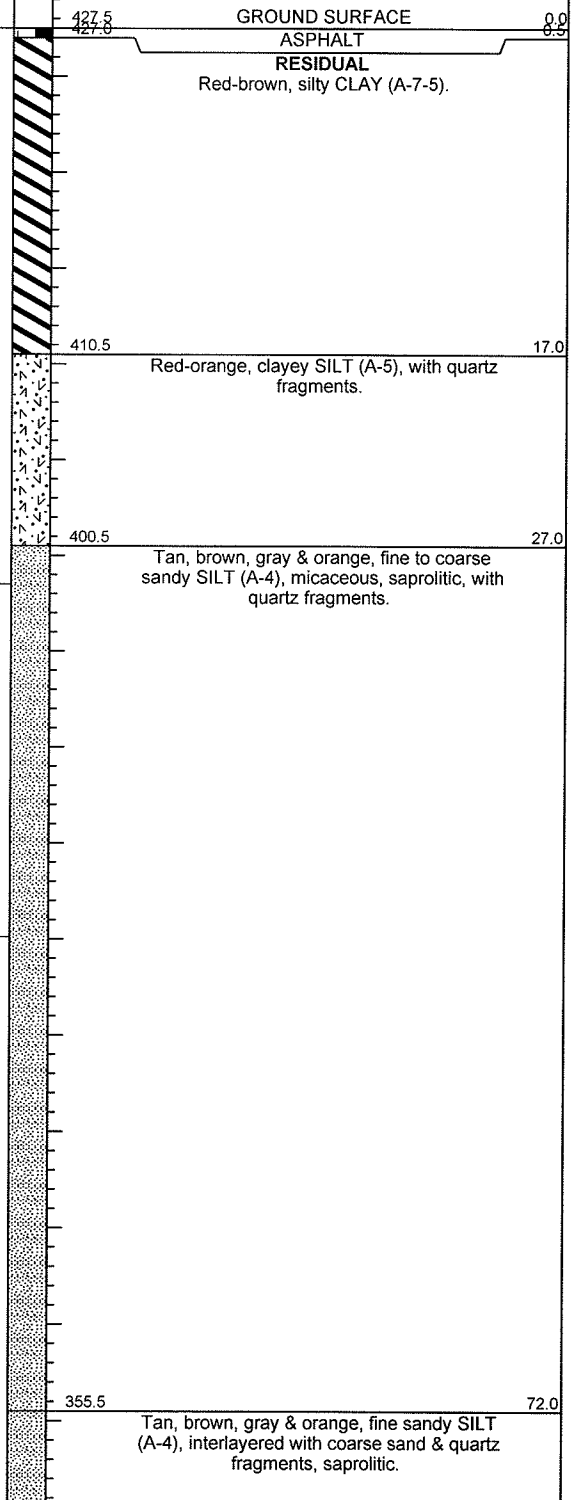


NCDOT GEOTECHNICAL ENGINEERING UNIT BORELOG REPORT

PROJECT NO. 36597.1.1	ID. I-4744	COUNTY Wake	GEOLOGIST D. Racey
SITE DESCRIPTION I-40 Widening from W. of Wade Ave. to E. of Jones Franklin Rd.			GROUND WTR (ft)
BORING NO. B1-A EBL	STATION 270+84	OFFSET 18ft RT	ALIGNMENT -LREV-
COLLAR ELEV. 427.5 ft	TOTAL DEPTH 103.5 ft	NORTHING 734,136	EASTING 2,078,358
DRILL MACHINE CME 550	DRILL METHOD 2.25" ID HSA	HAMMER TYPE Automatic	
START DATE 05/27/09	COMP. DATE 05/27/09	SURFACE WATER DEPTH N/A	DEPTH TO ROCK 93.5 ft

ELEV (ft)	DRIVE ELEV (ft)	DEPTH (ft)	BLOW COUNT			BLOWS PER FOOT					SAMP. NO.	LOG MOI	LOG	SOIL AND ROCK DESCRIPTION		
			0.5ft	0.5ft	0.5ft	0	25	50	75	100				ELEV. (ft)	DEPTH (ft)	
430																
425															427.5	0.0
															427.6	0.5
420																
415																
410																
405																
400																
395																
390																
385																
380																
375																
	374.0	53.5		10	26	53										
370																
	369.0	58.5		27	32	39										
365																
	364.0	63.5		17	23	31										
360																
	359.0	68.5		19	19	26										
355																
	354.0	73.5		10	33	35										
350																

NCDOT BORE SINGLE 66L-0104.CPJ NC_DOT_GDT_6/5/09





NCDOT GEOTECHNICAL ENGINEERING UNIT

BORELOG REPORT

PROJECT NO. 36597.1.1	ID. I-4744	COUNTY Wake	GEOLOGIST D. Racey
SITE DESCRIPTION I-40 Widening from W. of Wade Ave. to E. of Jones Franklin Rd.			GROUND WTR (ft)
BORING NO. B1-A EBL	STATION 270+84	OFFSET 18ft RT	ALIGNMENT -LREV-
COLLAR ELEV. 427.5 ft	TOTAL DEPTH 103.5 ft	NORTHING 734,136	EASTING 2,078,358
DRILL MACHINE CME 550		DRILL METHOD 2.25" ID HSA	
START DATE 05/27/09		COMP. DATE 05/27/09	
		SURFACE WATER DEPTH N/A	
			HAMMER TYPE Automatic
			DEPTH TO ROCK 93.5 ft

ELEV (ft)	DRIVE ELEV (ft)	DEPTH (ft)	BLOW COUNT			BLOWS PER FOOT					SAMP. NO.	MOI	LOG	SOIL AND ROCK DESCRIPTION	DEPTH (ft)
			0.5ft	0.5ft	0.5ft	0	25	50	75	100					
350						Match Line									
	349.0	78.5		19	39								W	Tan, brown, gray & orange, fine sandy SILT (A-4), interlayered with coarse sand & quartz fragments, saprolitic. (continued)	
345															
	344.0	83.5		39	61/0.4					100/0.9			M	WEATHERED ROCK Tan, brown & gray with orange, MICA GNEISS.	83.5
340															
	339.0	88.5								100/0.3			M		
335															
	334.0	93.5								60/0.1			M	CRYSTALLINE ROCK Tan, brown & gray, MICA GNEISS.	93.5
330															
	329.0	98.5								60/0.1			M		
325															
	324.0	103.5								60/0.0					
320															
315															
310															
305															
300															
295															
290															
285															
280															
275															
270															

NOTES:

- 1) Augered to 53.5', began split spoon sampling.
- 2) Elevation obtained from original boring.

Driller noted zones of softer & harder drilling from a depth of approx. 83.5'-93.5'.

NCDOT BORE SINGLE 66L-0104.GPJ NC_DOT_GDT 6/5/09