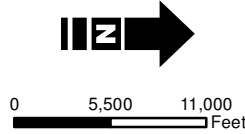


I-77_P3FieldMapIndex.mxd JNL 02.03.2012



I-77 HOV-HOT CONVERSION

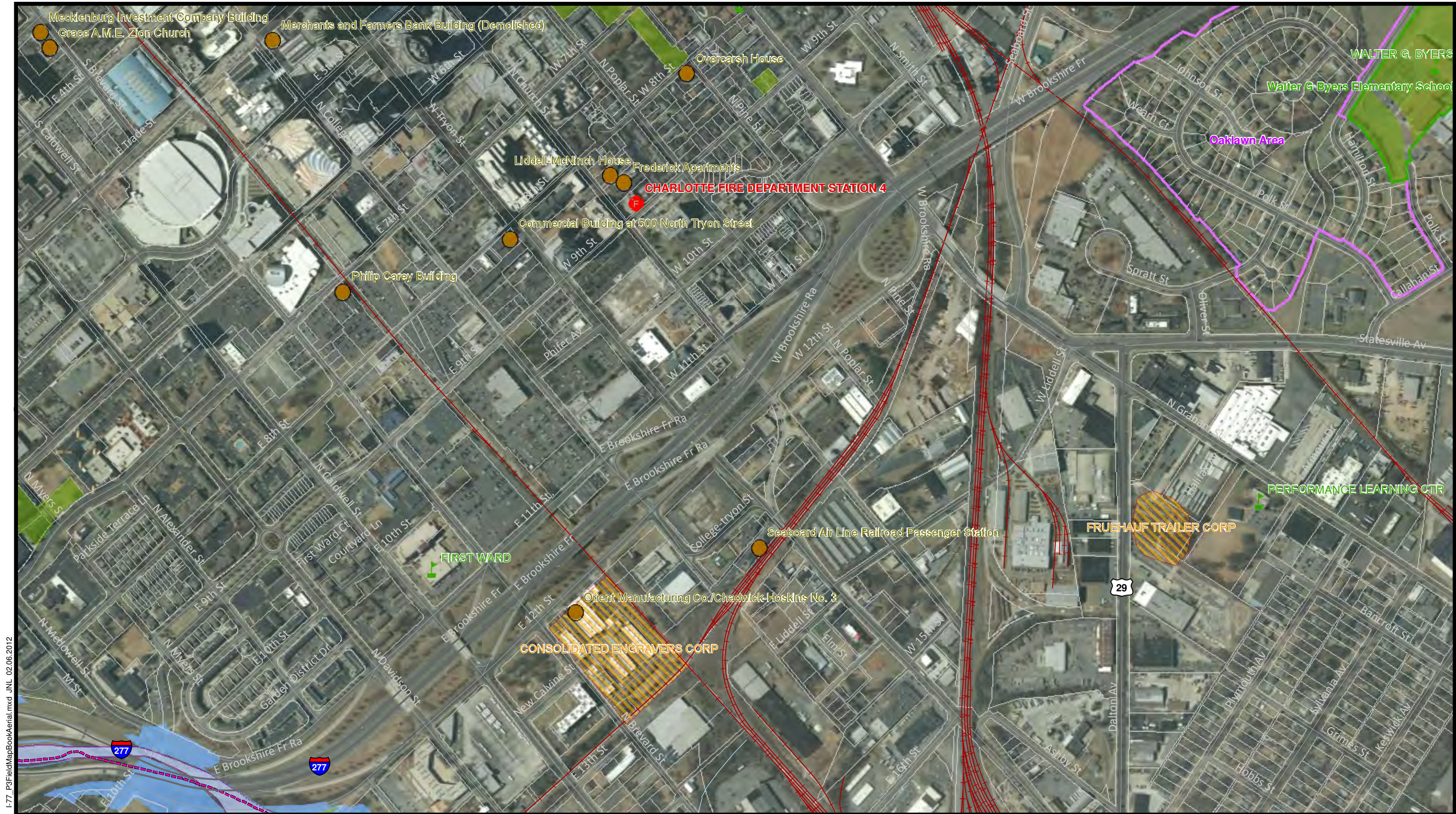
STIP PROJECT NO. I-5405
Mecklenburg County, North Carolina



Source: Mecklenburg County GIS,
NCDOT GIS, ESRI GIS, NCONEMAP

Legend		Sheet Key		Creeks & Streams		Charlotte		Huntersville
		County Boundary		Critical Watershed		Concord		Kannapolis
		I-77 Throughfare		Protected Watershed		Cornelius		Mooresville
		Railroad		Lakes & Ponds		Davidson		Mount Holly
		303(d) Streams				Harrisburg		Troutman

PROJECT AREA MAP
FIGURE 3 Index



I-77_P3FieldMapBookAerial.mxd JNL 02.06.2012



I-77 HOV-HOT CONVERSION

STIP PROJECT NO. I-5405
Mecklenburg County, North Carolina



Source: Mecklenburg County GIS, NCDOT GIS, ESRI GIS, NCONEMAP, and Iredell County GIS.

Legend

- | | | | | |
|-----------------------------|-------------------|---------------|-----------------|---------------------|
| I-77 Throughfare | Schools | Churches | County Boundary | Critical Watershed |
| Project Study Area | Schools | Churches | Neighborhoods | Protected Watershed |
| Historic Sites (Nat'l Reg.) | Hospitals Private | Cemeteries | Hazardous Sites | Lakes & Ponds |
| Community Parks | Hospitals Public | Fire Stations | Parcels | NWI Wetlands |
| Notable Features | State Owned Land | Railroad | 303(d) Streams | Floodway |
| | | | | 100 Year Floodplain |

PROJECT AREA MAP

FIGURE 3a

I-77_P0FieldMapBookAerial.mxd JNL 02.06.2012



I-77 HOV-HOT CONVERSION

STIP PROJECT NO. I-5405
Mecklenburg County, North Carolina



0 250 500
Feet

Source: Mecklenburg County GIS, NCDOT GIS, ESRI GIS,
NCONEMAP, and Iredell County GIS.

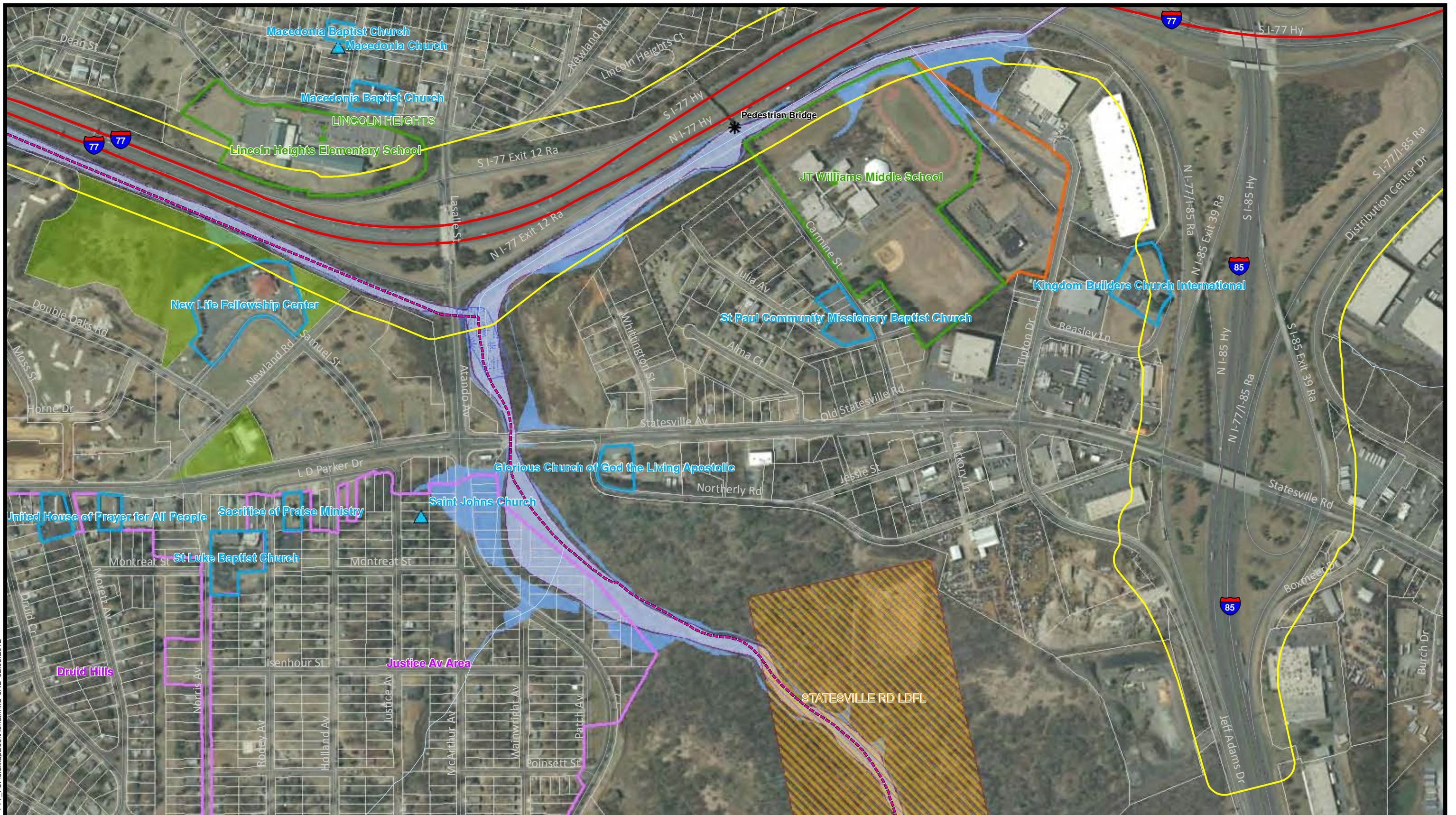
Legend

- | | | | | |
|-----------------------------|-------------------|---------------|-----------------|---------------------|
| I-77 Throughfare | Schools | Churches | County Boundary | Critical Watershed |
| Project Study Area | Schools | Churches | Neighborhoods | Protected Watershed |
| Historic Sites (Nat'l Reg.) | Hospitals Private | Cemeteries | Hazardous Sites | Lakes & Ponds |
| Community Parks | Hospitals Public | Fire Stations | Parcels | NWI Wetlands |
| Notable Features | State Owned Land | Railroad | 303(d) Streams | Floodway |
| | | | | 100 Year Floodplain |

PROJECT AREA MAP

FIGURE 3b

I-77_P3FieldMapBookAerial.mxd JNL 02.03.2012



I-77 HOV-HOT CONVERSION

STIP PROJECT NO. I-5405
Mecklenburg County, North Carolina



Source: Mecklenburg County GIS, NCDOT GIS, ESRI GIS, NCONEMAP, and Iredell County GIS.

Legend

- | | | | | |
|-----------------------------|-------------------|------------|------------------|---------------------|
| I-77 Throughfare | Schools | Churches | County Boundary | Critical Watershed |
| Project Study Area | Hospitals Private | Churches | Neighborhoods | Protected Watershed |
| Historic Sites (Nat'l Reg.) | Hospitals Public | Cemeteries | Hazardous Sites | Lakes & Ponds |
| Community Parks | Fire Stations | Railroads | Parcels | NWI Wetlands |
| Notable Features | State Owned Land | Railroads | Creeks & Streams | Floodway |
| | | | 303(d) Streams | 100 Year Floodplain |

PROJECT AREA MAP

FIGURE 3c

I-77_P3FieldMapBookAerial.mxd JNL 02.03.2012



I-77 HOV-HOT CONVERSION

STIP PROJECT NO. I-5405
Mecklenburg County, North Carolina



0 250 500
Feet

Source: Mecklenburg County GIS, NCDOT GIS, ESRI GIS, NCONEMAP, and Iredell County GIS.

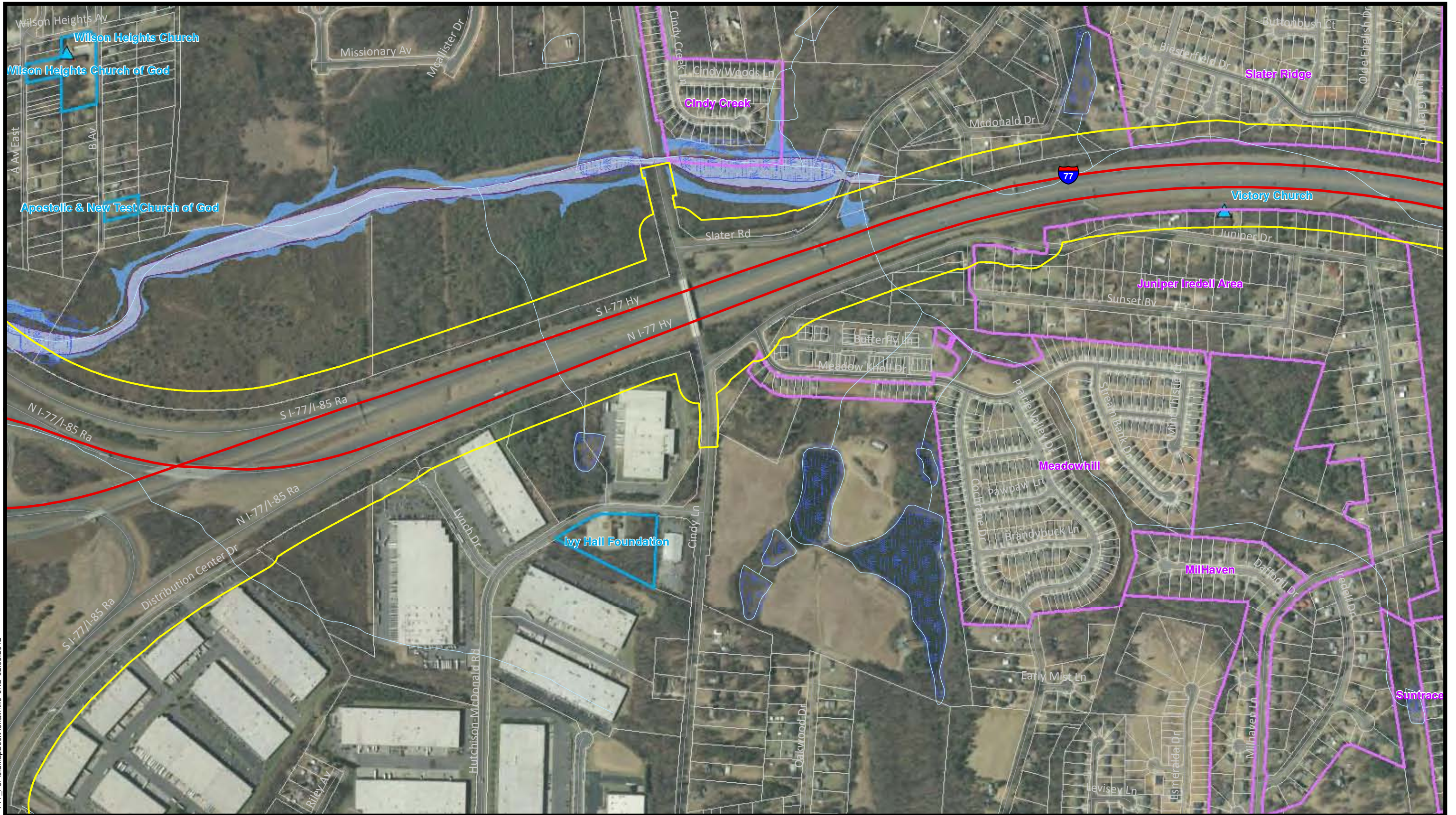
Legend

- | | | | | |
|-----------------------------|-------------------|---------------|------------------|---------------------|
| I-77 Throughfare | Schools | Churches | County Boundary | Critical Watershed |
| Project Study Area | Schools | Churches | Neighborhoods | Protected Watershed |
| Historic Sites (Nat'l Reg.) | Hospitals Private | Cemeteries | Hazardous Sites | Lakes & Ponds |
| Community Parks | Hospitals Public | Fire Stations | Parcels | NWI Wetlands |
| Notable Features | State Owned Land | Railroad | Creeks & Streams | Floodway |
| | | | 303(d) Streams | 100 Year Floodplain |

PROJECT AREA MAP

FIGURE 3d

I-77_P3FieldMapBookAerial.mxd JNL 02.03.2012



I-77 HOV-HOT CONVERSION

STIP PROJECT NO. I-5405
Mecklenburg County, North Carolina



Source: Mecklenburg County GIS, NCDOT GIS, ESRI GIS, NCONEMAP, and Iredell County GIS.

Legend

- | | | | | |
|-----------------------------|-------------------|---------------|-----------------|---------------------|
| I-77 Throughfare | Schools | Churches | County Boundary | Critical Watershed |
| Project Study Area | Schools | Churches | Neighborhoods | Protected Watershed |
| Historic Sites (Nat'l Reg.) | Hospitals Private | Cemeteries | Hazardous Sites | Lakes & Ponds |
| Community Parks | Hospitals Public | Fire Stations | Parcels | NWI Wetlands |
| Notable Features | State Owned Land | Railroad | 303(d) Streams | Floodway |
| | | | | 100 Year Floodplain |

PROJECT AREA MAP

FIGURE 3e

I-77_P3FieldMapBookAerial.mxd JNL 02.03.2012



I-77 HOV-HOT CONVERSION

STIP PROJECT NO. I-5405
Mecklenburg County, North Carolina



0 250 500
Feet

Source: Mecklenburg County GIS, NCDOT GIS, ESRI GIS,
NCONE MAP, and Iredell County GIS.

Legend

- | | | | | |
|-----------------------------|-------------------|---------------|-----------------|---------------------|
| I-77 Throughfare | Schools | Churches | County Boundary | Critical Watershed |
| Project Study Area | Schools | Churches | Neighborhoods | Protected Watershed |
| Historic Sites (Nat'l Reg.) | Hospitals Private | Cemeteries | Hazardous Sites | Lakes & Ponds |
| Community Parks | Hospitals Public | Fire Stations | Parcels | NWI Wetlands |
| Notable Features | State Owned Land | Railroad | 303(d) Streams | Floodway |
| | | | | 100 Year Floodplain |

PROJECT AREA MAP

FIGURE 3f

I-77_P3FieldMapBookAerial.mxd JNL 02.03.2012



I-77 HOV-HOT CONVERSION

STIP PROJECT NO. I-5405
Mecklenburg County, North Carolina



0 250 500
Feet

Source: Mecklenburg County GIS, NCDOT GIS, ESRI GIS, NCONEMAP, and Iredell County GIS.

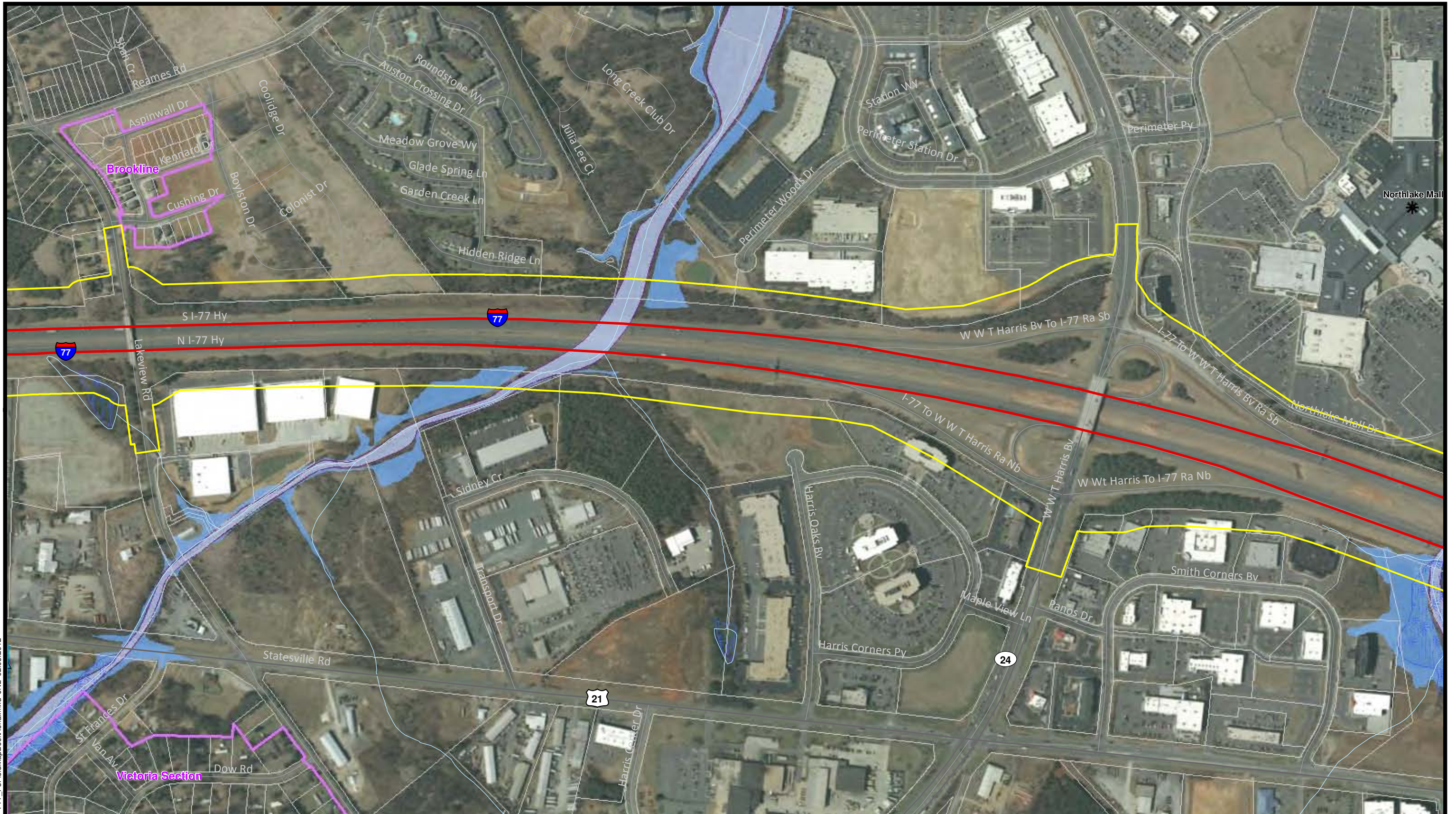
Legend

- | | | | | |
|-----------------------------|-------------------|---------------|------------------|---------------------|
| I-77 Throughfare | Schools | Churches | County Boundary | Critical Watershed |
| Project Study Area | Schools | Churches | Neighborhoods | Protected Watershed |
| Historic Sites (Nat'l Reg.) | Hospitals Private | Cemeteries | Hazardous Sites | Lakes & Ponds |
| Community Parks | Hospitals Public | Fire Stations | Parcels | NWI Wetlands |
| Notable Features | State Owned Land | Railroad | Creeks & Streams | Floodway |
| | | | 303(d) Streams | 100 Year Floodplain |

PROJECT AREA MAP

FIGURE 3g

I-77_P3FieldMapBookAerial.mxd JNL 02.03.2012



I-77 HOV-HOT CONVERSION

STIP PROJECT NO. I-5405
Mecklenburg County, North Carolina



Source: Mecklenburg County GIS, NCDOT GIS, ESRI GIS, NCONEMAP, and Iredell County GIS.

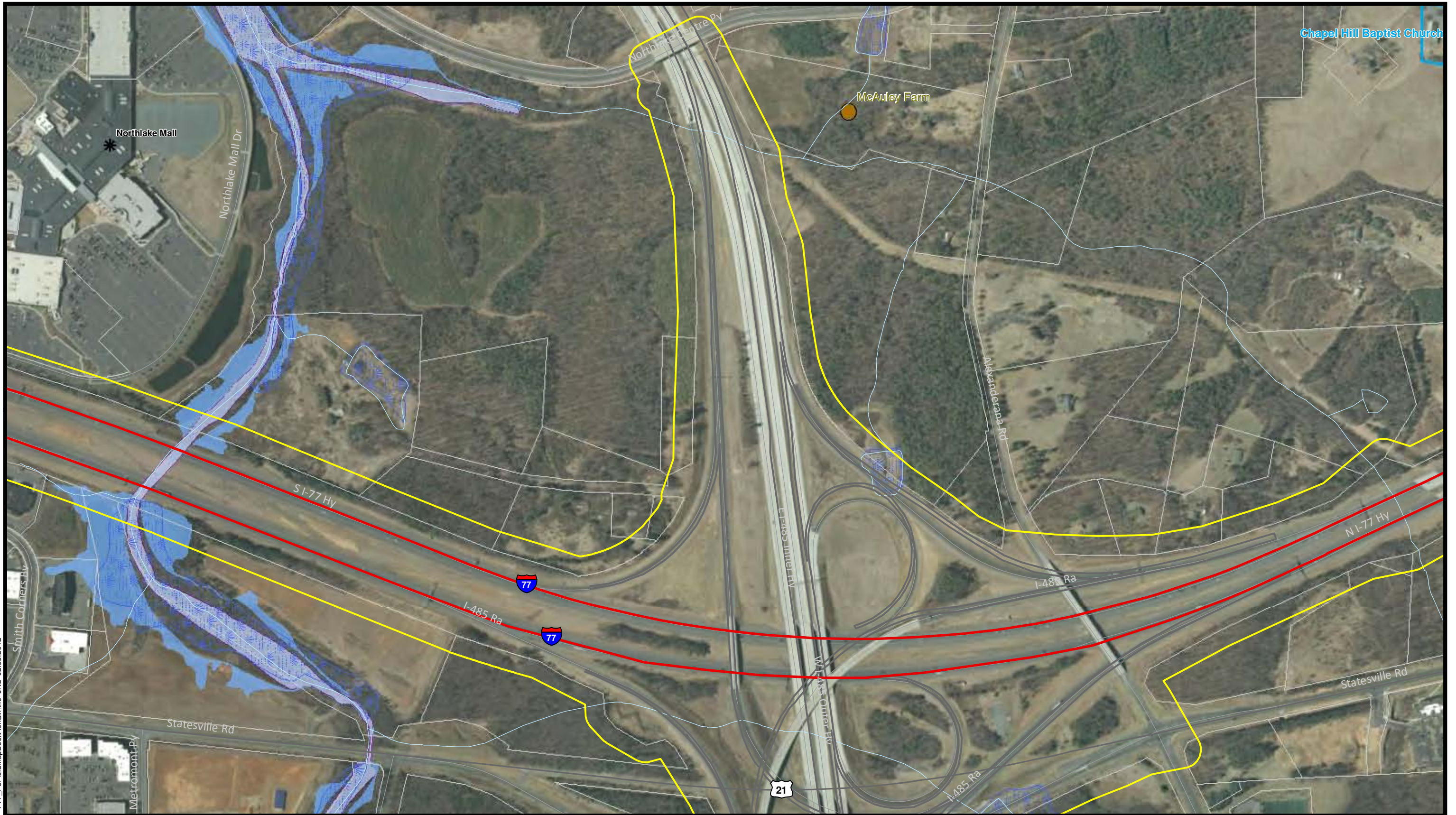
Legend

- | | | | | |
|-----------------------------|-------------------|----------------|---------------------|---------------------|
| I-77 Throughfare | Schools | Churches | County Boundary | Critical Watershed |
| Project Study Area | Hospitals Private | Churches | Neighborhoods | Protected Watershed |
| Historic Sites (Nat'l Reg.) | Hospitals Public | Cemeteries | Hazardous Sites | Lakes & Ponds |
| Community Parks | Fire Stations | Railroads | Parcels | NWI Wetlands |
| Notable Features | State Owned Land | 303(d) Streams | Creeks & Streams | Floodway |
| | | | 100 Year Floodplain | |

PROJECT AREA MAP

FIGURE 3h

I-77_P3FieldMapBookAerial.mxd JNL 02.03.2012



I-77 HOV-HOT CONVERSION

STIP PROJECT NO. I-5405
Mecklenburg County, North Carolina



0 250 500
Feet

Source: Mecklenburg County GIS, NCDOT GIS, ESRI GIS, NCONEMAP, and Iredell County GIS.

Legend

- | | | | | |
|-----------------------------|-------------------|---------------|-----------------|---------------------|
| I-77 Throughfare | Schools | Churches | County Boundary | Critical Watershed |
| Project Study Area | Schools | Churches | Neighborhoods | Protected Watershed |
| Historic Sites (Nat'l Reg.) | Hospitals Private | Cemeteries | Hazardous Sites | Lakes & Ponds |
| Community Parks | Hospitals Public | Fire Stations | Parcels | NWI Wetlands |
| Notable Features | State Owned Land | Railroad | 303(d) Streams | Floodway |
| | | | | 100 Year Floodplain |

PROJECT AREA MAP

FIGURE 3i

I-77_P3FieldMapBookAerial.mxd JNL 02.03.2012



I-77 HOV-HOT CONVERSION

STIP PROJECT NO. I-5405
Mecklenburg County, North Carolina



0 250 500
Feet

Source: Mecklenburg County GIS, NCDOT GIS, ESRI GIS, NCONEMAP, and Iredell County GIS.

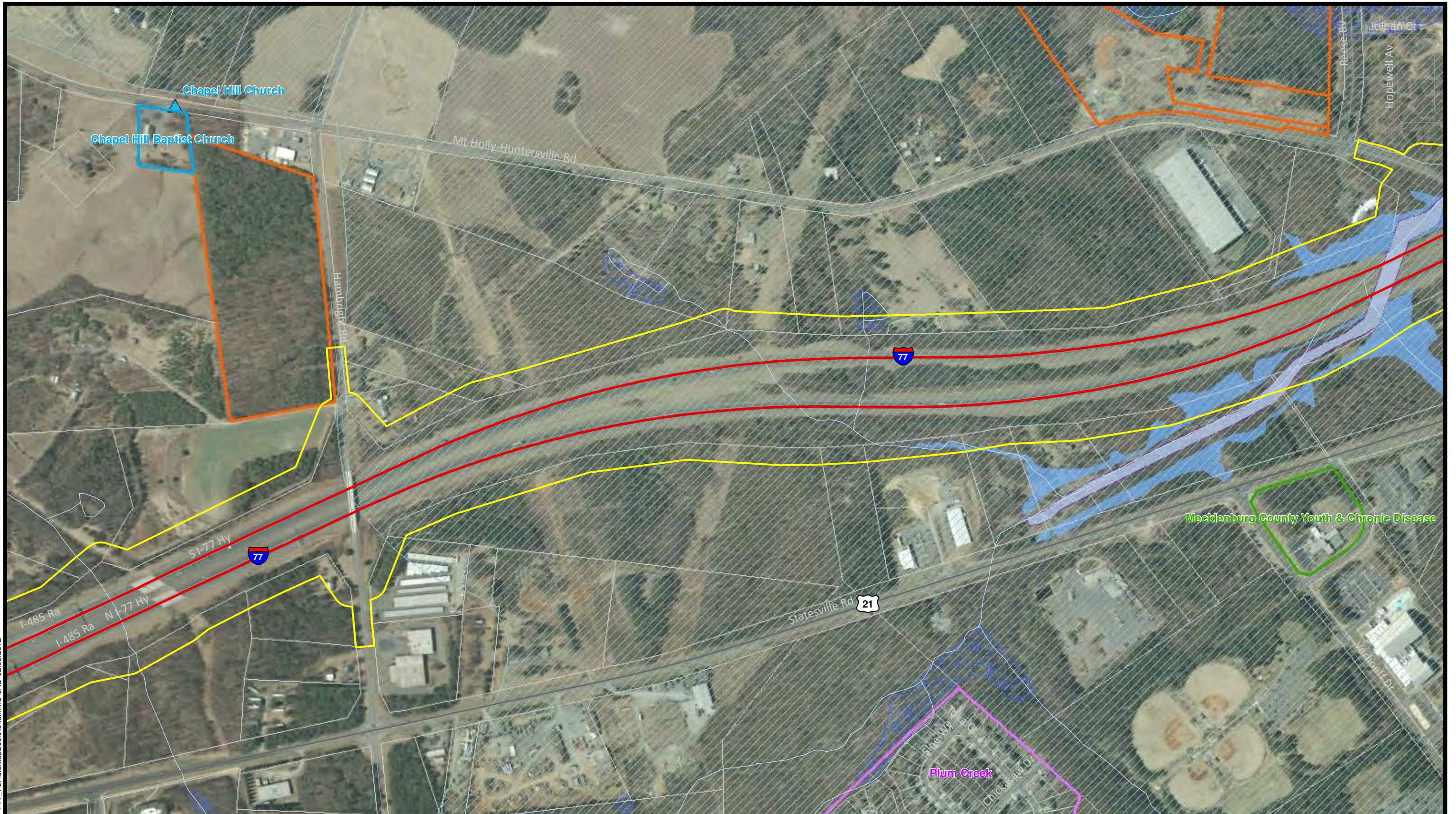
Legend

- | | | | | |
|-----------------------------|-------------------|---------------|-----------------|---------------------|
| I-77 Throughfare | Schools | Churches | County Boundary | Critical Watershed |
| Project Study Area | Schools | Churches | Neighborhoods | Protected Watershed |
| Historic Sites (Nat'l Reg.) | Hospitals Private | Cemeteries | Hazardous Sites | Lakes & Ponds |
| Community Parks | Hospitals Public | Fire Stations | Parcels | NWI Wetlands |
| Notable Features | State Owned Land | Railroad | 303(d) Streams | Floodway |
| | | | | 100 Year Floodplain |

PROJECT AREA MAP

FIGURE 3j

I-77_P3FieldMapBookAerial.mxd JNL 02.03.2012



I-77 HOV-HOT CONVERSION

STIP PROJECT NO. I-5405
Mecklenburg County, North Carolina



0 250 500
Feet

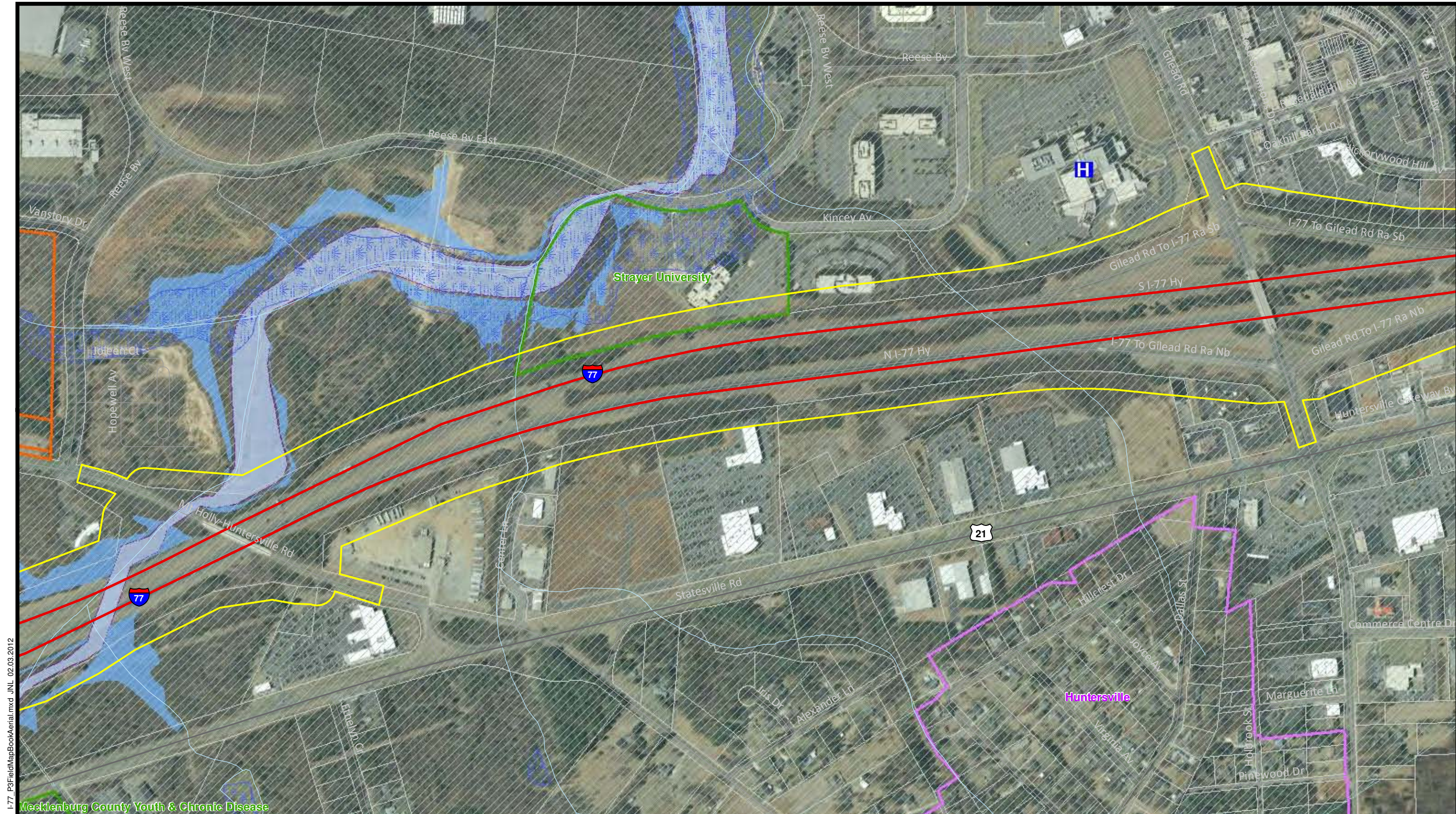
Source: Mecklenburg County GIS, NCDOT GIS, ESRI GIS,
NCONEMAP, and Iredell County GIS.

Legend

- | | | | | |
|-----------------------------|-------------------|---------------|------------------|---------------------|
| I-77 Throughfare | Schools | Churches | County Boundary | Critical Watershed |
| Project Study Area | Schools | Churches | Neighborhoods | Protected Watershed |
| Historic Sites (Nat'l Reg.) | Hospitals Private | Cemeteries | Hazardous Sites | Lakes & Ponds |
| Community Parks | Hospitals Public | Fire Stations | Parcels | NWI Wetlands |
| Notable Features | State Owned Land | Railroad | Creeks & Streams | Floodway |
| | | | 303(d) Streams | 100 Year Floodplain |

PROJECT AREA MAP

FIGURE 3k



I-77_P3FieldMapBookAerial.mxd JNL 02.03.2012



**I-77 HOV-HOT
CONVERSION**
STIP PROJECT NO. I-5405
Mecklenburg County, North Carolina

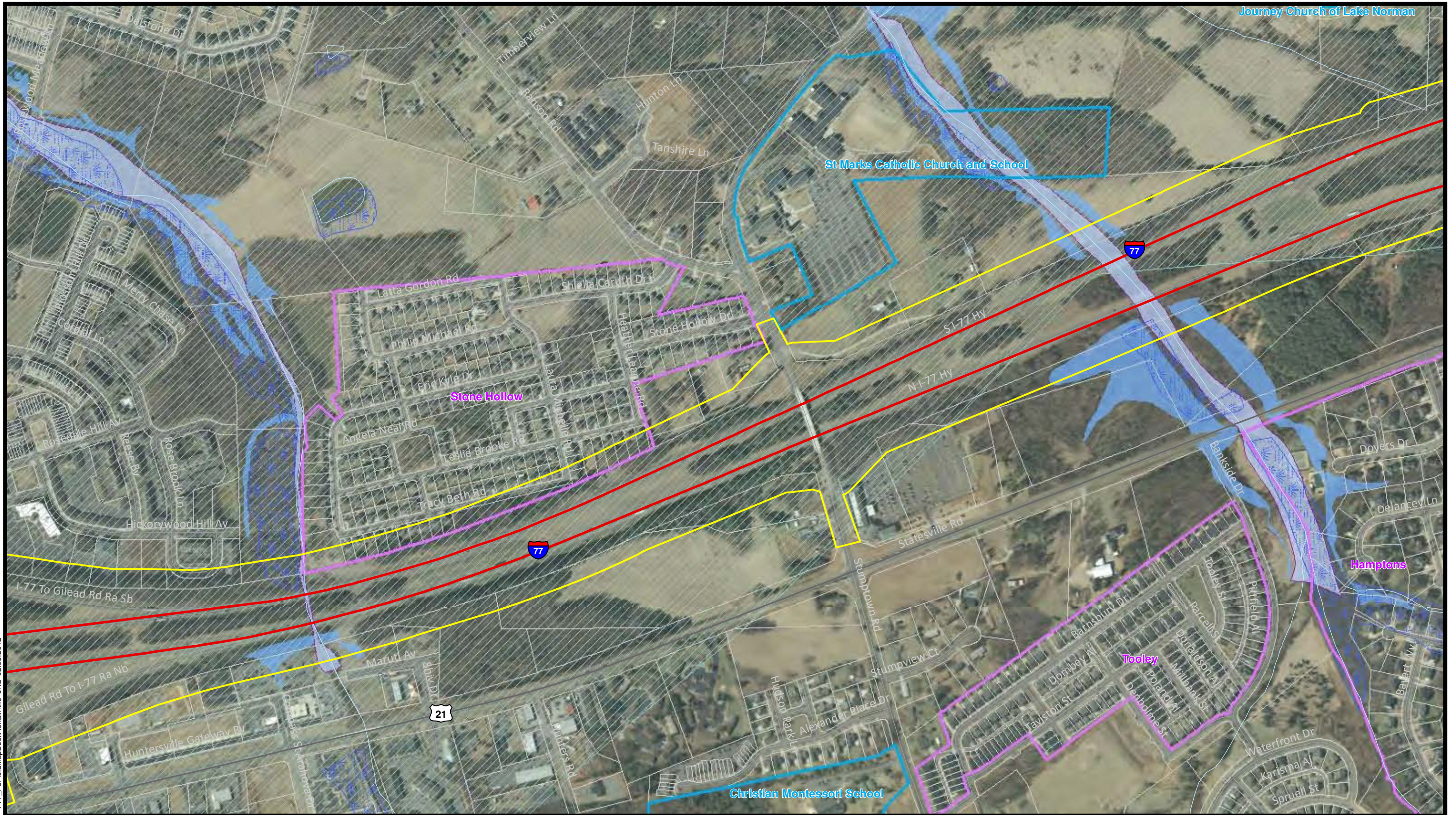
Legend

Source: Mecklenburg County GIS, NCDOT GIS, ESRI GIS, NCONEMAP, and Iredell County GIS.

- I-77 Throughfare
- Project Study Area
- Historic Sites (Nat'l Reg.)
- Community Parks
- Noteable Features
- Schools
- Schools
- Hospitals Private
- Hospitals Public
- State Owned Land
- Churches
- Churches
- Cemeteries
- Fire Stations
- Railroad
- County Boundary
- Neighborhoods
- Hazardous Sites
- Parcels
- Creeks & Streams
- 303(d) Streams
- Critical Watershed
- Protected Watershed
- Lakes & Ponds
- NWI Wetlands
- Floodway
- 100 Year Floodplain

PROJECT AREA MAP
FIGURE 3I

I-77_P3FieldMapBookAerial.mxd JNL 02.03.2012



I-77 HOV-HOT CONVERSION

STIP PROJECT NO. I-5405
Mecklenburg County, North Carolina



Source: Mecklenburg County GIS, NCDOT GIS, ESRI GIS, NCONEMAP, and Iredell County GIS.

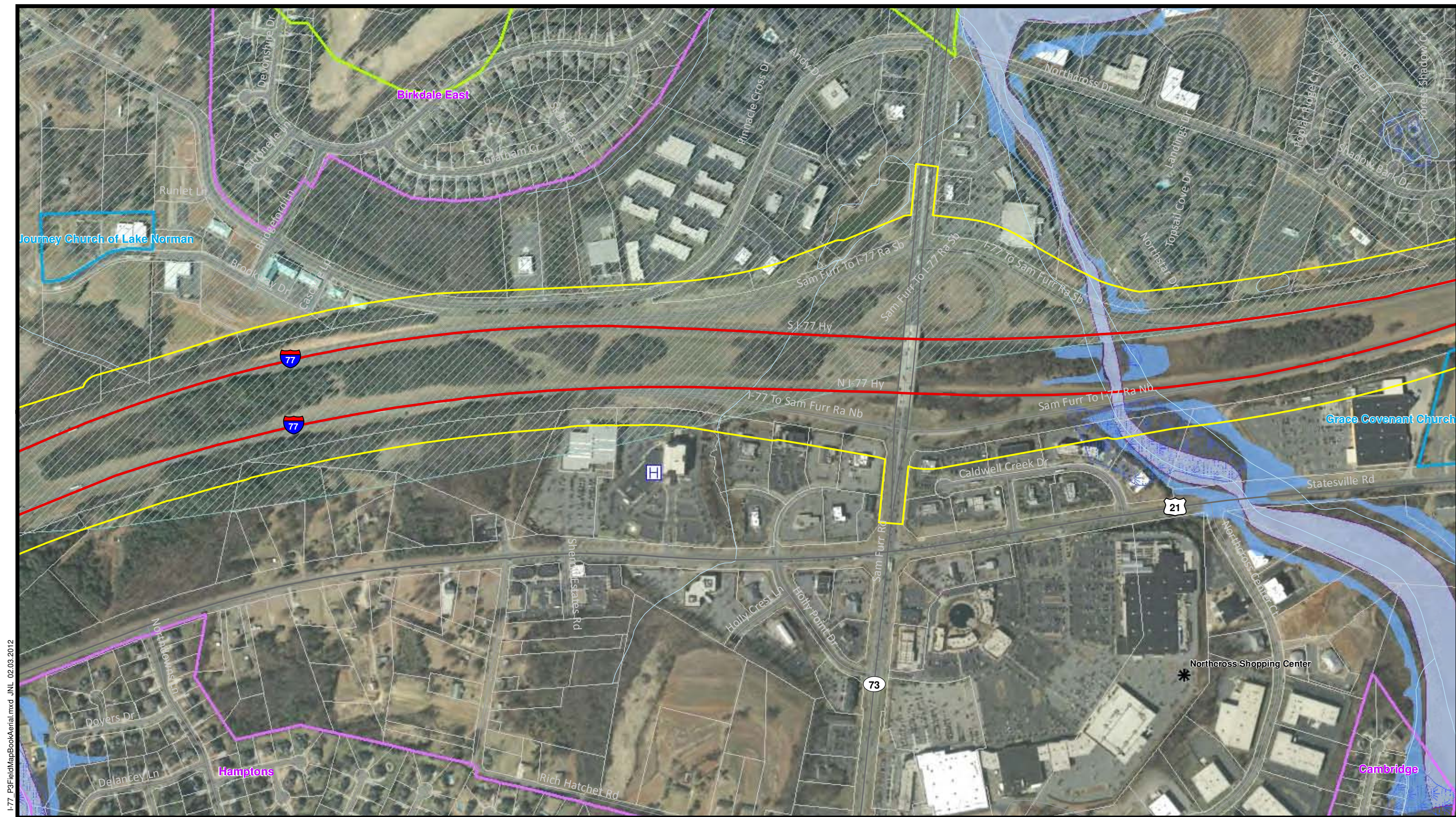
Legend

- | | | | | |
|-----------------------------|-------------------|---------------|------------------|---------------------|
| I-77 Throughfare | Schools | Churches | County Boundary | Critical Watershed |
| Project Study Area | Hospitals Private | Churches | Neighborhoods | Protected Watershed |
| Historic Sites (Nat'l Reg.) | Hospitals Public | Cemeteries | Hazardous Sites | Lakes & Ponds |
| Community Parks | Fire Stations | Fire Stations | Parcels | NWI Wetlands |
| Notable Features | State Owned Land | Railroad | Creeks & Streams | Floodway |
| | | | 303(d) Streams | 100 Year Floodplain |

PROJECT AREA MAP

FIGURE 3m

I-77_P3FieldMapBookAerial.mxd JNL 02.03.2012



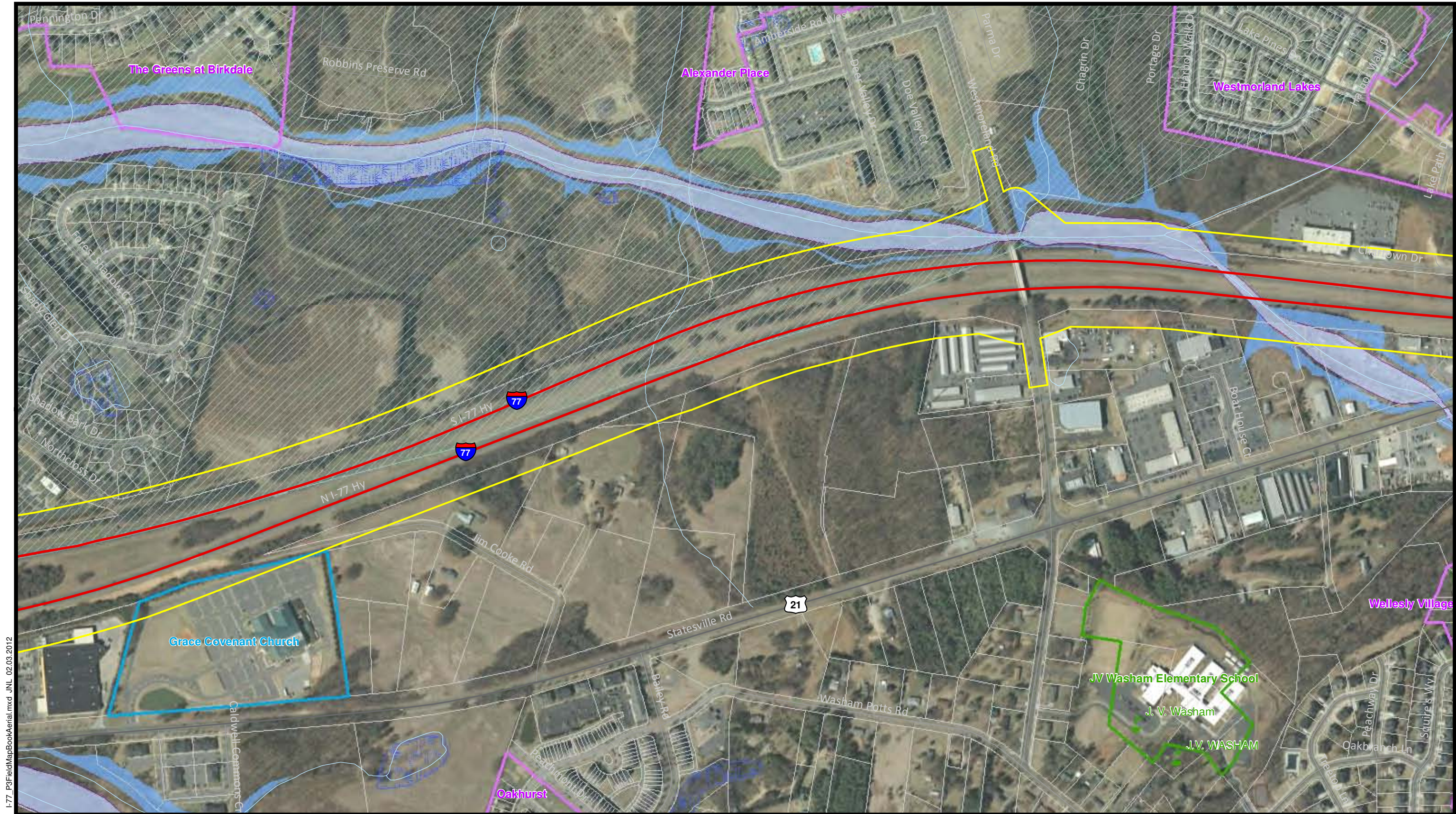
**I-77 HOV-HOT
CONVERSION**
STIP PROJECT NO. I-5405
Mecklenburg County, North Carolina

Legend

Source: Mecklenburg County GIS, NCDOT GIS, ESRI GIS, NCONEMAP, and Iredell County GIS.

- | | | | | |
|-----------------------------|-------------------|------------------|-----------------|---------------------|
| I-77 Throughfare | Schools | Churches | County Boundary | Critical Watershed |
| Project Study Area | Hospitals Private | Churches | Neighborhoods | Protected Watershed |
| Historic Sites (Nat'l Reg.) | Hospitals Public | Cemeteries | Hazardous Sites | Lakes & Ponds |
| Community Parks | State Owned Land | Fire Stations | Parcels | NWI Wetlands |
| Notable Features | Railroad | Creeks & Streams | 303(d) Streams | Floodway |
| | | | | 100 Year Floodplain |

PROJECT AREA MAP
FIGURE 3n



I-77_P3FieldMapBookAerial.mxd JNL 02.03.2012



I-77 HOV-HOT CONVERSION

STIP PROJECT NO. I-5405
Mecklenburg County, North Carolina



0 250 500
Feet

Source: Mecklenburg County GIS, NCDOT GIS, ESRI GIS, NCONEMAP, and Iredell County GIS.

Legend

- | | | | | |
|---|---|---|---|---|
| — I-77 Throughfare | ■ Schools | ▲ Churches | County Boundary | Critical Watershed |
| Project Study Area | Schools | Churches | Neighborhoods | Protected Watershed |
| ● Historic Sites (Nat'l Reg.) | H Hospitals Private | + Cemeteries | ■ Hazardous Sites | ■ Lakes & Ponds |
| ■ Community Parks | H Hospitals Public | F Fire Stations | Parcels | ■ NWI Wetlands |
| ✱ Notable Features | ■ State Owned Land | + Railroad | --- 303(d) Streams | ■ Floodway |
| | | | | ■ 100 Year Floodplain |

PROJECT AREA MAP

FIGURE 3o

I-77_P03FieldMapBookAerial.mxd JNL 02.03.2012



I-77 HOV-HOT CONVERSION

STIP PROJECT NO. I-5405
Mecklenburg County, North Carolina



0 250 500
Feet

Source: Mecklenburg County GIS, NCDOT GIS, ESRI GIS, NCONEMAP, and Iredell County GIS.

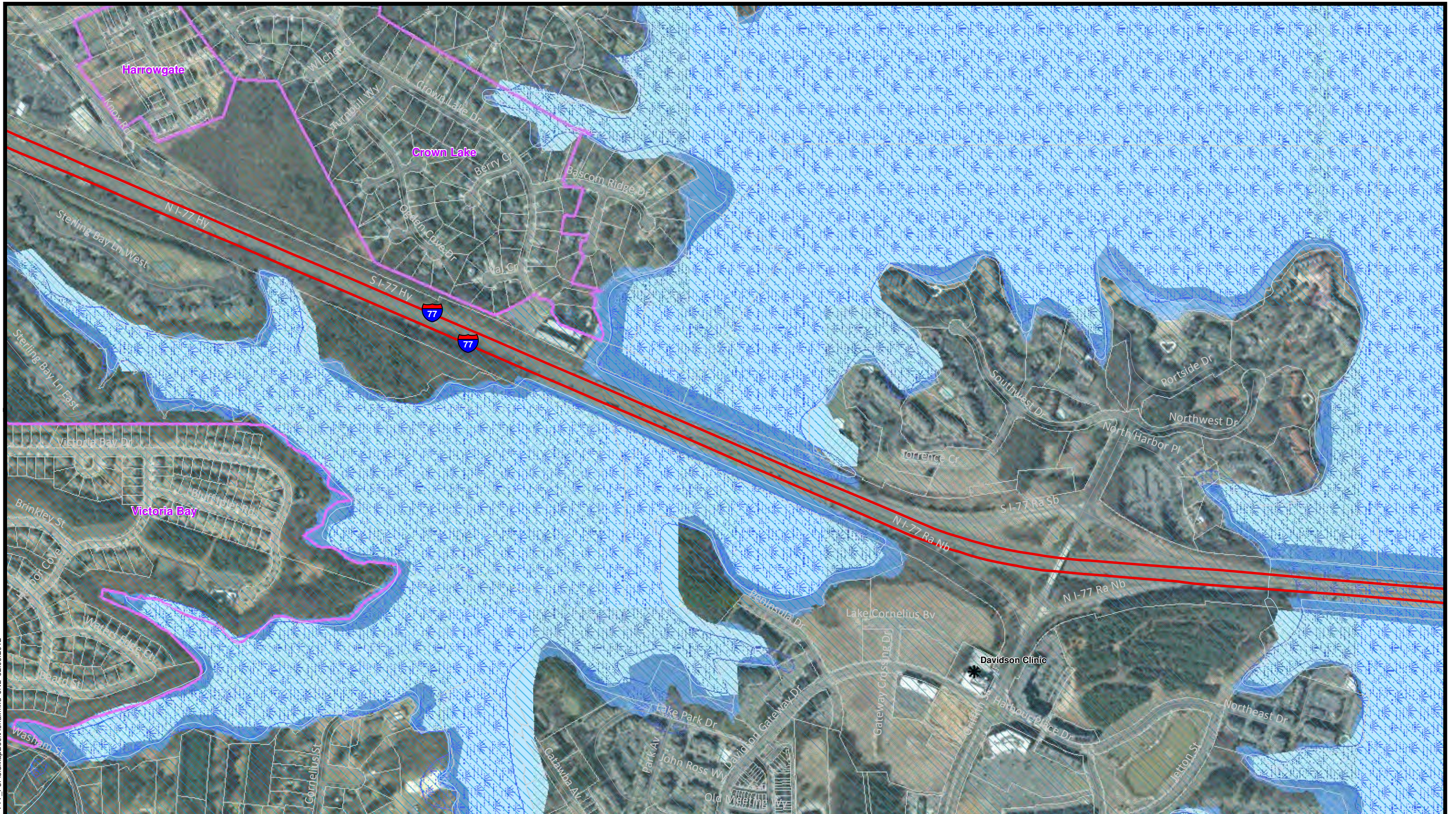
Legend

- | | | | | |
|-----------------------------|-------------------|---------------|-----------------|---------------------|
| I-77 Throughfare | Schools | Churches | County Boundary | Critical Watershed |
| Project Study Area | Schools | Churches | Neighborhoods | Protected Watershed |
| Historic Sites (Nat'l Reg.) | Hospitals Private | Cemeteries | Hazardous Sites | Lakes & Ponds |
| Community Parks | Hospitals Public | Fire Stations | Parcels | NWI Wetlands |
| Notable Features | State Owned Land | Railroad | 303(d) Streams | Floodway |
| | | | | 100 Year Floodplain |

PROJECT AREA MAP

FIGURE 3p

I-77_P3FieldMapBookAerial.mxd JNL 02.03.2012



I-77 HOV-HOT CONVERSION

STIP PROJECT NO. I-5405
Mecklenburg County, North Carolina



0 250 500
Feet

Source: Mecklenburg County GIS, NCDOT GIS, ESRI GIS, NCONEMAP, and Iredell County GIS.

Legend

- | | | | | |
|-----------------------------|-------------------|---------------|-----------------|---------------------|
| I-77 Throughfare | Schools | Churches | County Boundary | Critical Watershed |
| Project Study Area | Schools | Churches | Neighborhoods | Protected Watershed |
| Historic Sites (Nat'l Reg.) | Hospitals Private | Cemeteries | Hazardous Sites | Lakes & Ponds |
| Community Parks | Hospitals Public | Fire Stations | Parcels | NWI Wetlands |
| Notable Features | State Owned Land | Railroad | 303(d) Streams | Floodway |
| | | | | 100 Year Floodplain |

PROJECT AREA MAP

FIGURE 3q

I-77_P3FieldMapBookAerial.mxd JNL 02.03.2012



I-77 HOV-HOT CONVERSION

STIP PROJECT NO. I-5405
Mecklenburg County, North Carolina



0 250 500
Feet

Source: Mecklenburg County GIS, NCDOT GIS, ESRI GIS, NCONEMAP, and Iredell County GIS.

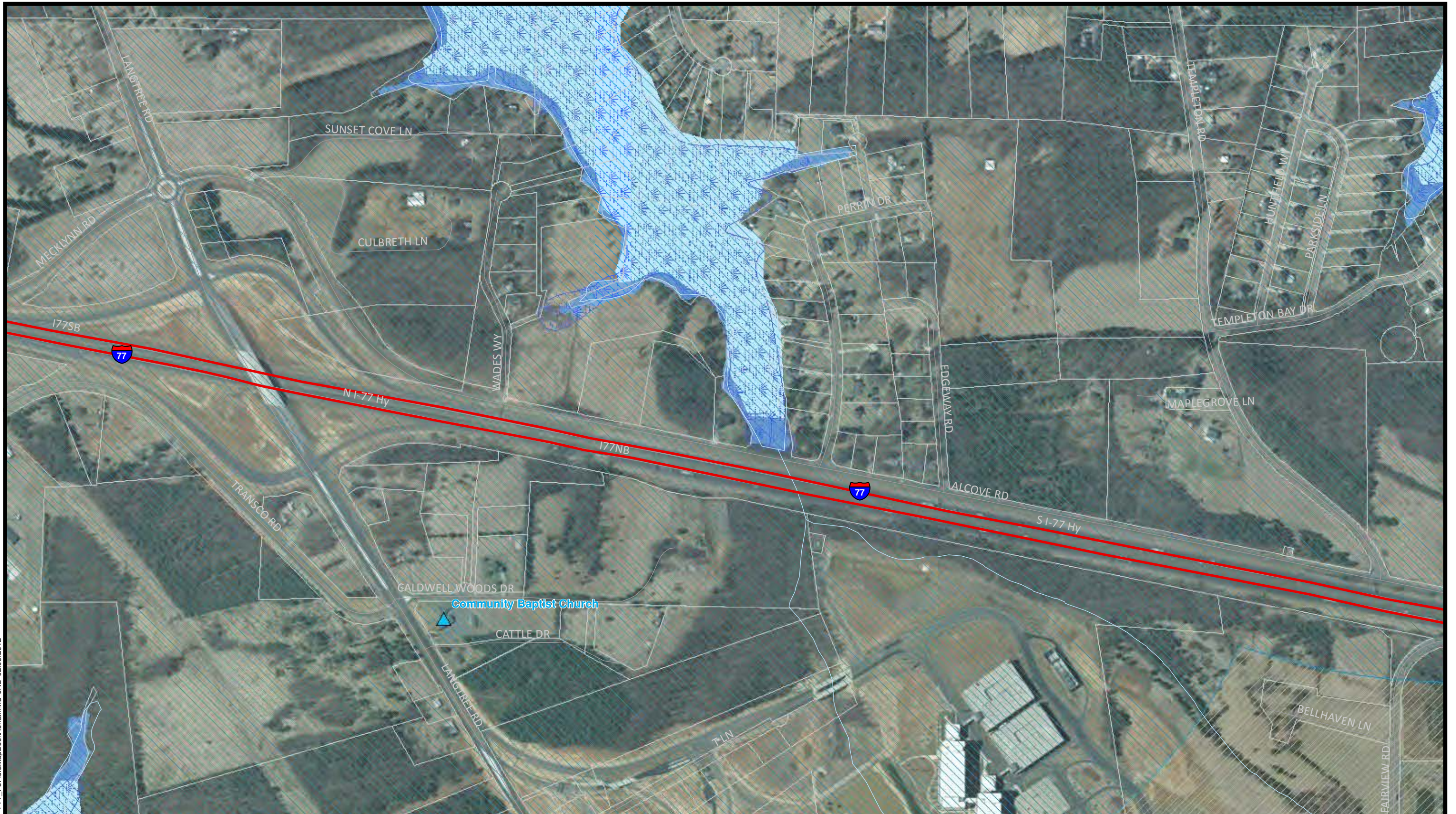
Legend

- | | | | | |
|-----------------------------|-------------------|---------------|------------------|---------------------|
| I-77 Throughfare | Schools | Churches | County Boundary | Critical Watershed |
| Project Study Area | Schools | Churches | Neighborhoods | Protected Watershed |
| Historic Sites (Nat'l Reg.) | Hospitals Private | Cemeteries | Hazardous Sites | Lakes & Ponds |
| Community Parks | Hospitals Public | Fire Stations | Parcels | NW1 Wetlands |
| Noteable Features | State Owned Land | Railroad | Creeks & Streams | Floodway |
| | | | 303(d) Streams | 100 Year Floodplain |

PROJECT AREA MAP

FIGURE 3r

I-77_P3FieldMapBookAerial.mxd JNL 02.03.2012



I-77 HOV-HOT CONVERSION

STIP PROJECT NO. I-5405
Mecklenburg County, North Carolina



0 250 500
Feet

Source: Mecklenburg County GIS, NCDOT GIS, ESRI GIS, NCONEMAP, and Iredell County GIS.

Legend

- | | | | | |
|-----------------------------|-------------------|---------------|-----------------|---------------------|
| I-77 Throughfare | Schools | Churches | County Boundary | Critical Watershed |
| Project Study Area | Schools | Churches | Neighborhoods | Protected Watershed |
| Historic Sites (Nat'l Reg.) | Hospitals Private | Cemeteries | Hazardous Sites | Lakes & Ponds |
| Community Parks | Hospitals Public | Fire Stations | Parcels | NWI Wetlands |
| Notable Features | State Owned Land | Railroad | 303(d) Streams | Floodway |
| | | | | 100 Year Floodplain |

PROJECT AREA MAP

FIGURE 3s

I-77_P3FieldMapBookAerial.mxd JNL 02.03.2012



I-77 HOV-HOT CONVERSION

STIP PROJECT NO. I-5405
Mecklenburg County, North Carolina



0 250 500
Feet

Source: Mecklenburg County GIS, NCDOT GIS, ESRI GIS,
NCONEMAP, and Iredell County GIS.

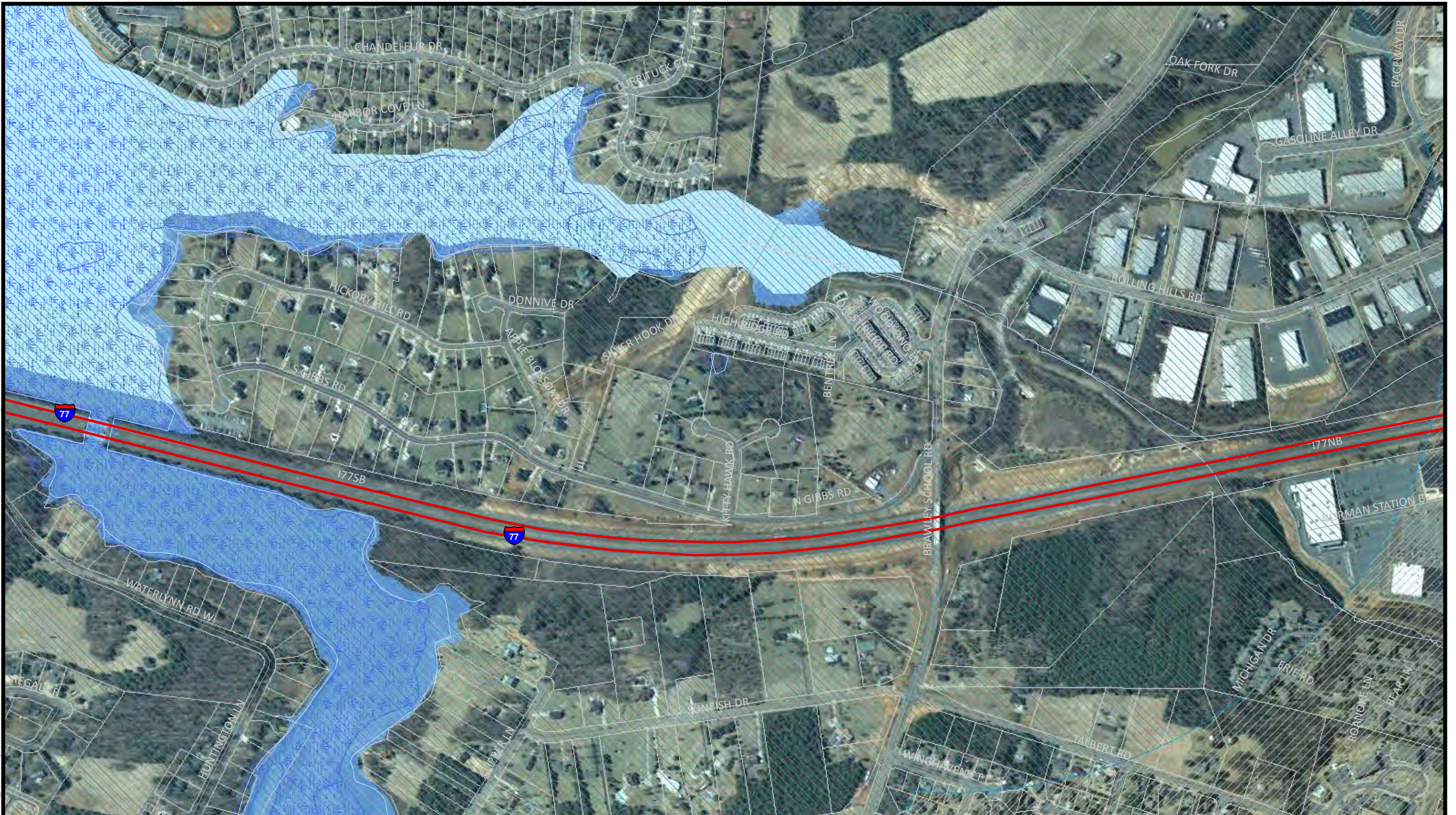
Legend

- | | | | | |
|-----------------------------|-------------------|---------------|-----------------|---------------------|
| I-77 Throughfare | Schools | Churches | County Boundary | Critical Watershed |
| Project Study Area | Schools | Churches | Neighborhoods | Protected Watershed |
| Historic Sites (Nat'l Reg.) | Hospitals Private | Cemeteries | Hazardous Sites | Lakes & Ponds |
| Community Parks | Hospitals Public | Fire Stations | Parcels | NWI Wetlands |
| Notable Features | State Owned Land | Railroad | 303(d) Streams | Floodway |
| | | | | 100 Year Floodplain |

PROJECT AREA MAP

FIGURE 3t

I-77_P3FieldMapBookAerial.mxd JNL 02.03.2012



I-77 HOV-HOT CONVERSION

STIP PROJECT NO. I-5405
Mecklenburg County, North Carolina



0 250 500
Feet

Source: Mecklenburg County GIS, NCDOT GIS, ESRI GIS, NCONEMAP, and Iredell County GIS.

Legend

- | | | | | |
|-----------------------------|-------------------|----------------|-----------------|---------------------|
| I-77 Throughfare | Schools | Churches | County Boundary | Critical Watershed |
| Project Study Area | Hospitals Private | Churches | Neighborhoods | Protected Watershed |
| Historic Sites (Nat'l Reg.) | Hospitals Public | Cemeteries | Hazardous Sites | Lakes & Ponds |
| Community Parks | Fire Stations | Railroads | Parcels | NWI Wetlands |
| Notable Features | State Owned Land | 303(d) Streams | Floodway | 100 Year Floodplain |

PROJECT AREA MAP

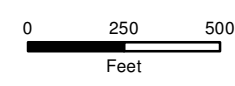
FIGURE 3u

I-77_P3FieldMapBookAerial.mxd JNL 02.03.2012



I-77 HOV-HOT CONVERSION

STIP PROJECT NO. I-5405
Mecklenburg County, North Carolina



Source: Mecklenburg County GIS, NCDOT GIS, ESRI GIS, NCONEMAP, and Iredell County GIS.

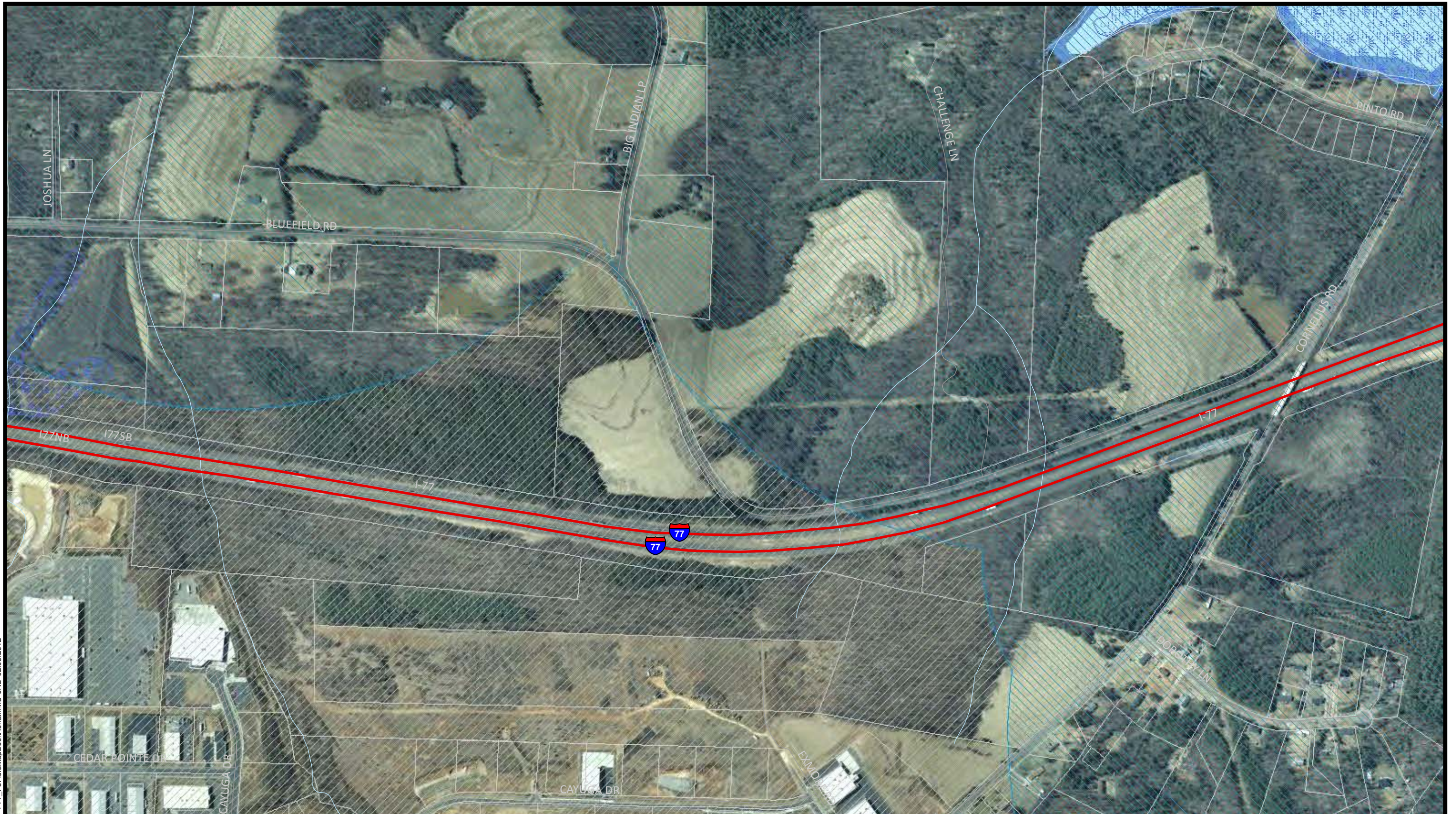
Legend

- | | | | | |
|-----------------------------|-------------------|---------------|-----------------|---------------------|
| I-77 Throughfare | Schools | Churches | County Boundary | Critical Watershed |
| Project Study Area | Schools | Churches | Neighborhoods | Protected Watershed |
| Historic Sites (Nat'l Reg.) | Hospitals Private | Cemeteries | Hazardous Sites | Lakes & Ponds |
| Community Parks | Hospitals Public | Fire Stations | Parcels | NWI Wetlands |
| Notable Features | State Owned Land | Railroad | 303(d) Streams | Floodway |
| | | | | 100 Year Floodplain |

PROJECT AREA MAP

FIGURE 3v

I-77_P3FieldMapBookAerial.mxd JNL 02.03.2012



I-77 HOV-HOT CONVERSION

STIP PROJECT NO. I-5405
Mecklenburg County, North Carolina



0 250 500
Feet

Source: Mecklenburg County GIS, NCDOT GIS, ESRI GIS,
NCONEMAP, and Iredell County GIS.

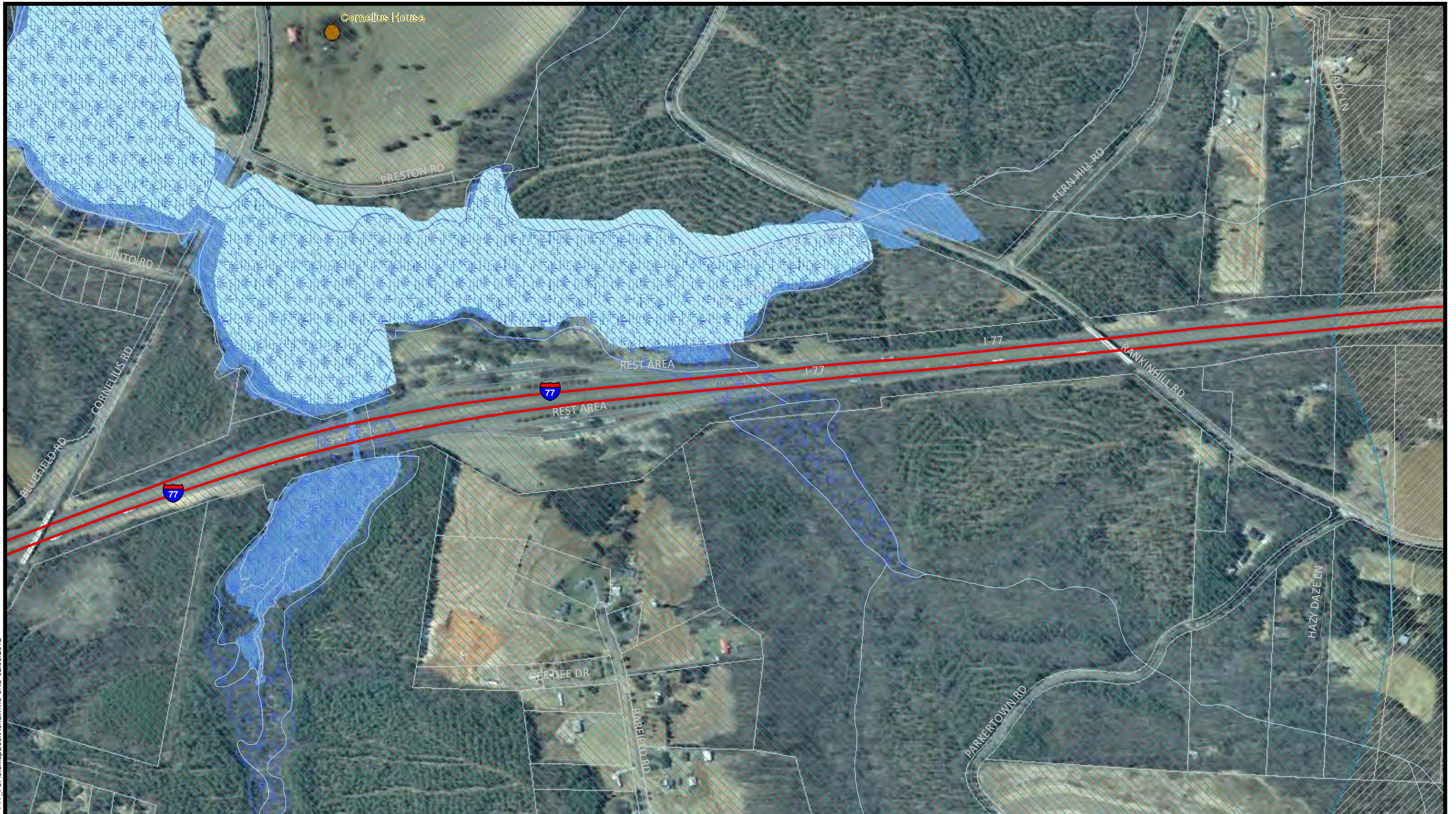
Legend

- | | | | | |
|-----------------------------|-------------------|---------------|-----------------|---------------------|
| I-77 Throughfare | Schools | Churches | County Boundary | Critical Watershed |
| Project Study Area | Schools | Churches | Neighborhoods | Protected Watershed |
| Historic Sites (Nat'l Reg.) | Hospitals Private | Cemeteries | Hazardous Sites | Lakes & Ponds |
| Community Parks | Hospitals Public | Fire Stations | Parcels | NWI Wetlands |
| Notable Features | State Owned Land | Railroad | 303(d) Streams | Floodway |
| | | | | 100 Year Floodplain |

PROJECT AREA MAP

FIGURE 3w

I-77_P3FieldMapBookAerial.mxd JNL 02.03.2012



I-77 HOV-HOT CONVERSION

STIP PROJECT NO. I-5405
Mecklenburg County, North Carolina



0 250 500
Feet

Source: Mecklenburg County GIS, NCDOT GIS, ESRI GIS, NCONEMAP, and Iredell County GIS.

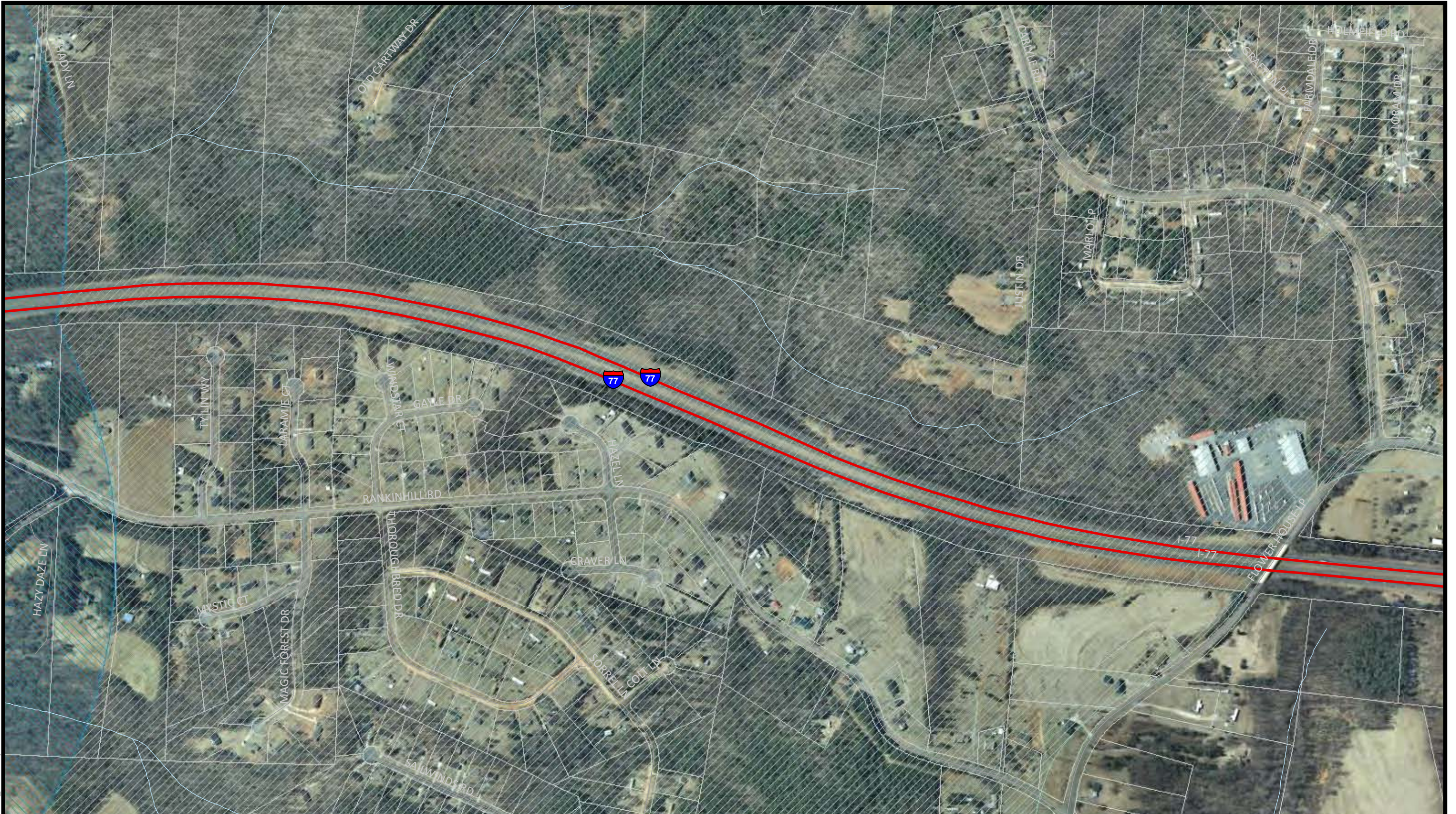
Legend

I-77 Throughfare	Schools	Churches	County Boundary	Critical Watershed
Project Study Area	Schools	Churches	Neighborhoods	Protected Watershed
Historic Sites (Nat'l Reg.)	Hospitals Private	Cemeteries	Hazardous Sites	Lakes & Ponds
Community Parks	Hospitals Public	Fire Stations	Parcels	NWI Wetlands
Notable Features	State Owned Land	Railroad	303(d) Streams	Floodway
				100 Year Floodplain

PROJECT AREA MAP

FIGURE 3x

I-77_P3FieldMapBookAerial.mxd JNL 02.03.2012



I-77 HOV-HOT CONVERSION

STIP PROJECT NO. I-5405
Mecklenburg County, North Carolina



0 250 500
Feet

Source: Mecklenburg County GIS, NCDOT GIS, ESRI GIS, NCONEMAP, and Iredell County GIS.

Legend

- | | | | | |
|-----------------------------|-------------------|---------------|-----------------|---------------------|
| I-77 Throughfare | Schools | Churches | County Boundary | Critical Watershed |
| Project Study Area | Schools | Churches | Neighborhoods | Protected Watershed |
| Historic Sites (Nat'l Reg.) | Hospitals Private | Cemeteries | Hazardous Sites | Lakes & Ponds |
| Community Parks | Hospitals Public | Fire Stations | Parcels | NWI Wetlands |
| Notable Features | State Owned Land | Railroad | 303(d) Streams | Floodway |
| | | | | 100 Year Floodplain |

PROJECT AREA MAP

FIGURE 3y

I-77_P3FieldMapBookAerial.mxd JNL 02.03.2012



I-77 HOV-HOT CONVERSION

STIP PROJECT NO. I-5405
Mecklenburg County, North Carolina



0 250 500
Feet

Source: Mecklenburg County GIS, NCDOT GIS, ESRI GIS,
NCONE MAP, and Iredell County GIS.

Legend

- | | | | | |
|-----------------------------|-------------------|---------------|-----------------|---------------------|
| I-77 Throughfare | Schools | Churches | County Boundary | Critical Watershed |
| Project Study Area | Schools | Churches | Neighborhoods | Protected Watershed |
| Historic Sites (Nat'l Reg.) | Hospitals Private | Cemeteries | Hazardous Sites | Lakes & Ponds |
| Community Parks | Hospitals Public | Fire Stations | Parcels | NWI Wetlands |
| Notable Features | State Owned Land | Railroad | 303(d) Streams | Floodway |
| | | | | 100 Year Floodplain |

PROJECT AREA MAP

FIGURE 3z