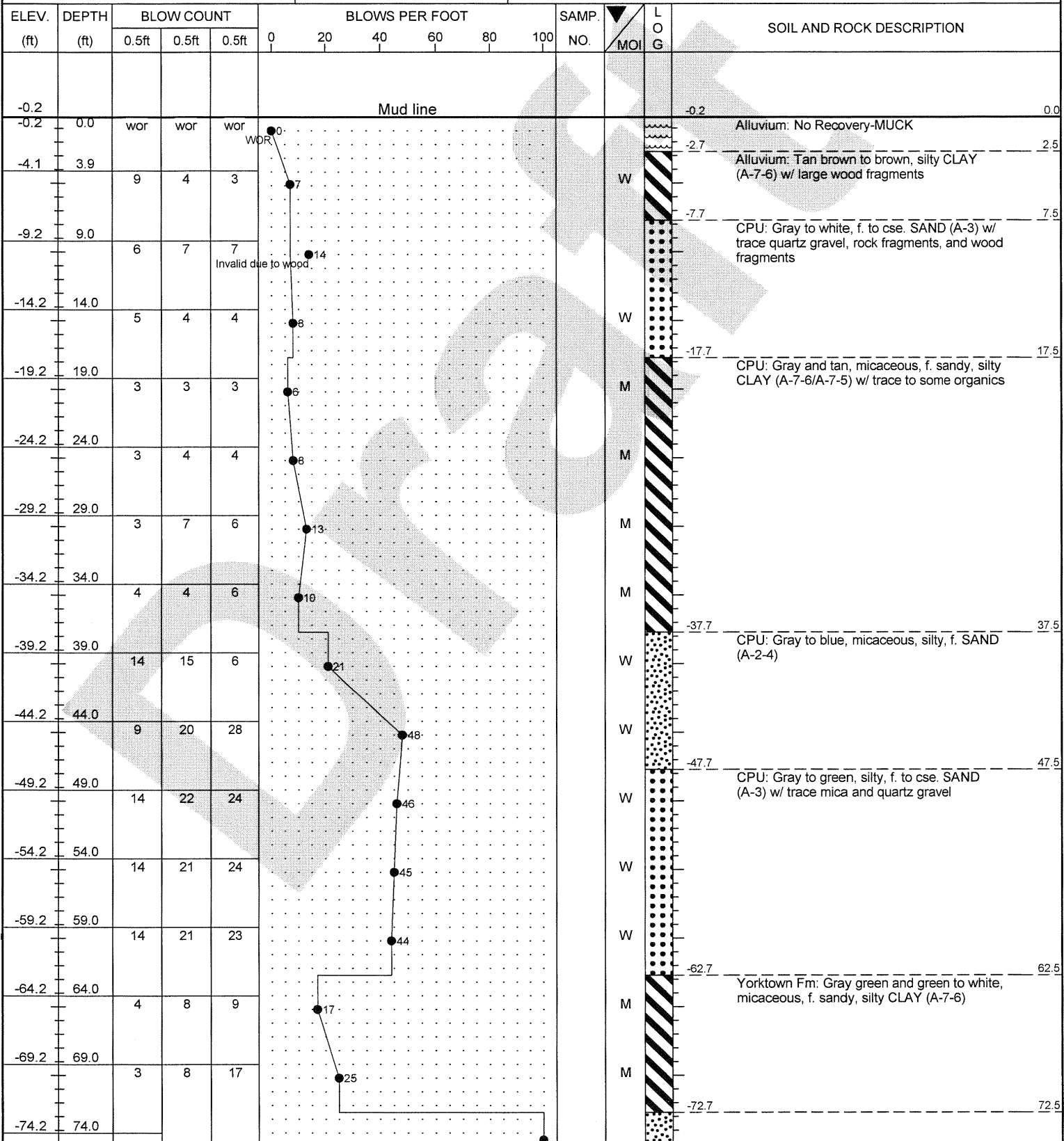




PROJECT NO. 34424.1.1	ID. R-2404A	COUNTY Bertie	GEOLOGIST B. Parks
SITE DESCRIPTION Dual Structures on US 17 (Windsor Bypass) over Cashie River (MACTEC Proj. No. 6468-04-0808)			GROUND WATER (ft)
BORING NO. MB-19	BORING LOCATION		ALIGNMENT -L-
COLLAR ELEV. -0.2 ft	NORTHING 830,450	US ft	0 HR. Water
	EASTING 2,607,760	US ft	24 HR. Boring
TOTAL DEPTH 100.5 ft	DRILL MACHINE CME 45 on Buggy	DRILL METHOD Mud Rotary	HAMMER TYPE 140-lb Manual
DATE STARTED 10/18/04	COMPLETED 10/19/04	SURFACE WATER DEPTH 0.6 ft	



NCDOT BORE SINGLE_0808.GPJ_NC_DOT_GDT_10/20/04

