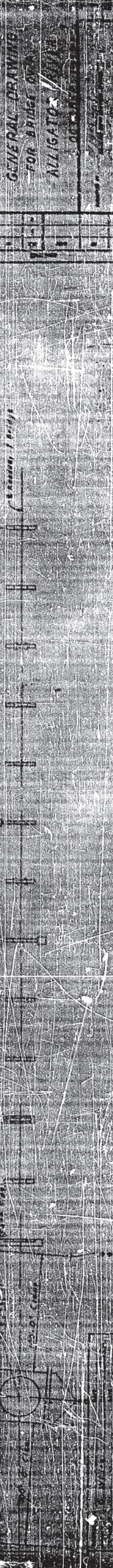
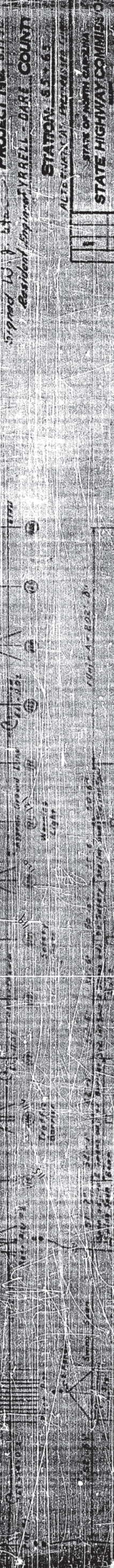
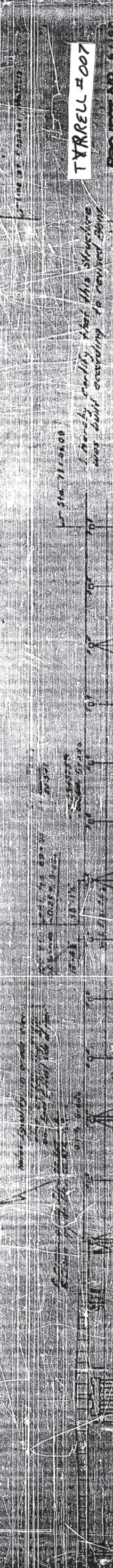
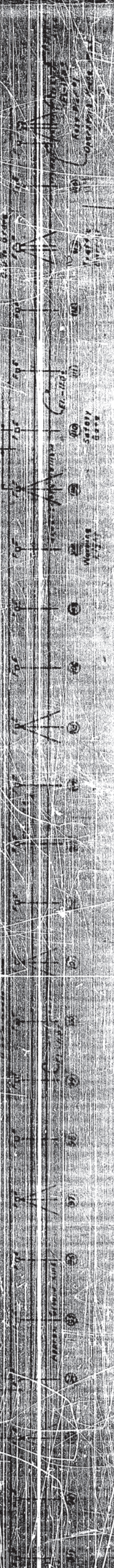
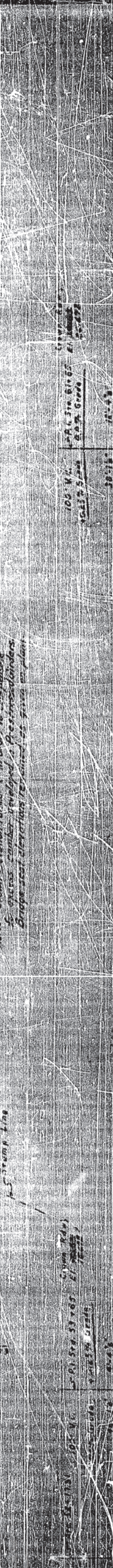
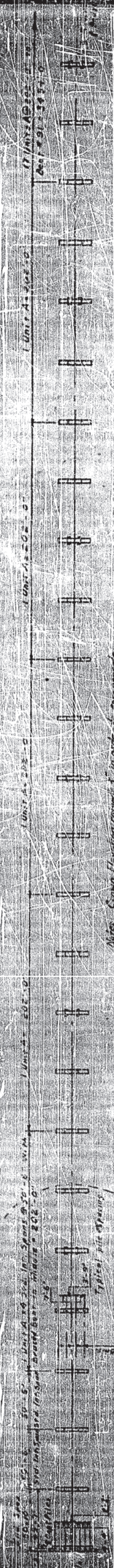






200' V.C.  
45% GRADE  
45' 18" E.C.  
CROWN (NEW)  
14+25 ELEV. 100.00



Note: Crown Elevations shown in order to indicate  
the excess number employed in Preliminary  
Design - final elevations to be given on plan.

Typical pier spacing  
15' stream line

100' V.C.  
45% GRADE  
45' 18" E.C.  
CROWN (NEW)  
14+25 ELEV. 100.00

TYRRELL #007

PROJECT NO. 61192  
Resident Engineer, TYRRELL - DARE COUNTY

STATION: 65+63

ALTERNATE PROPOSALS

1	2	3	4	5	6	7	8	9	10

STATE OF NORTH CAROLINA  
GENERAL DRAWING  
FOR BRIDGE OVER  
NAVIGABLE WATERWAY

1. Check existing structure for stability and safety. If found deficient, design and construct necessary repairs.

2. Design and construct new structure to meet existing and future traffic requirements.

3. Design and construct new structure to meet existing and future traffic requirements.

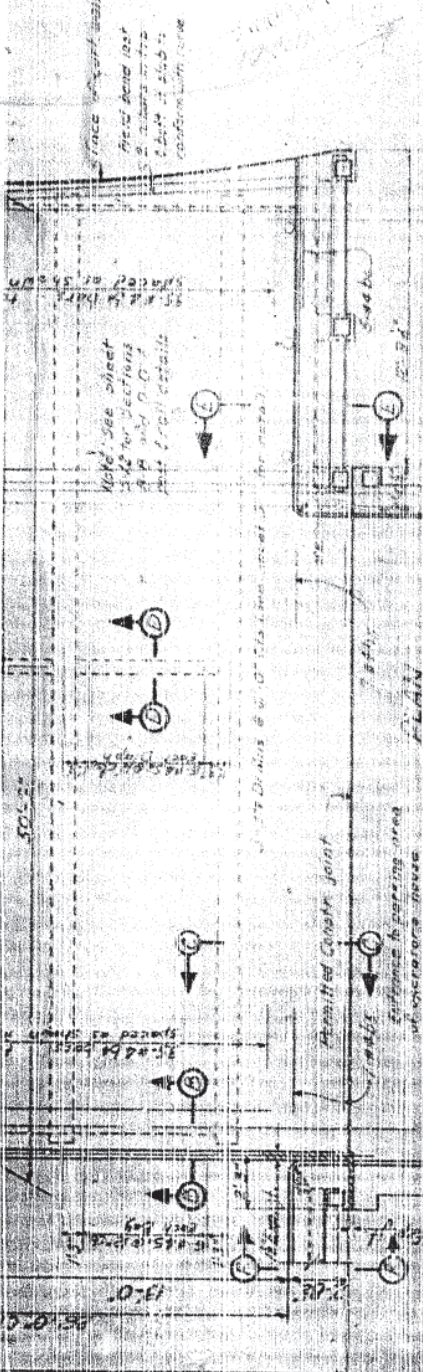
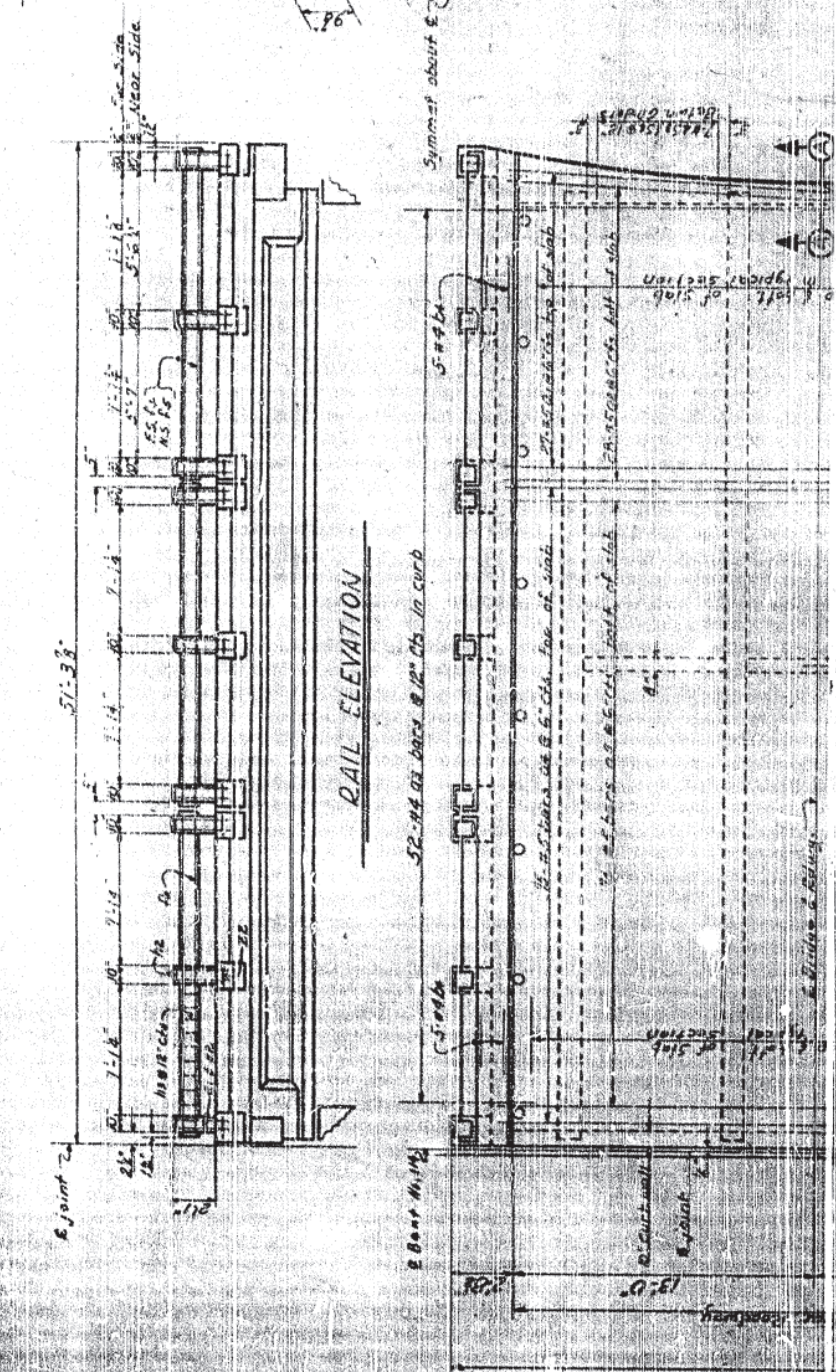
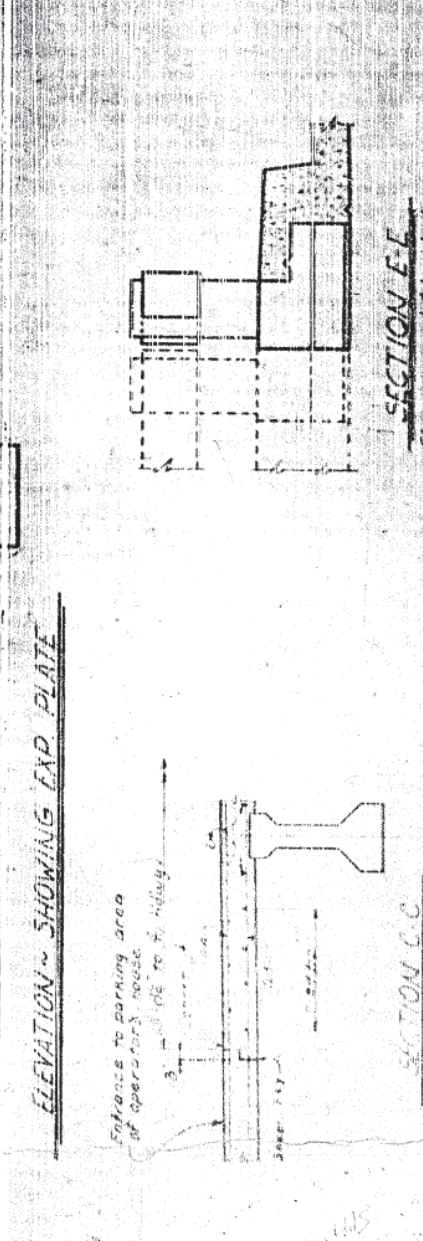
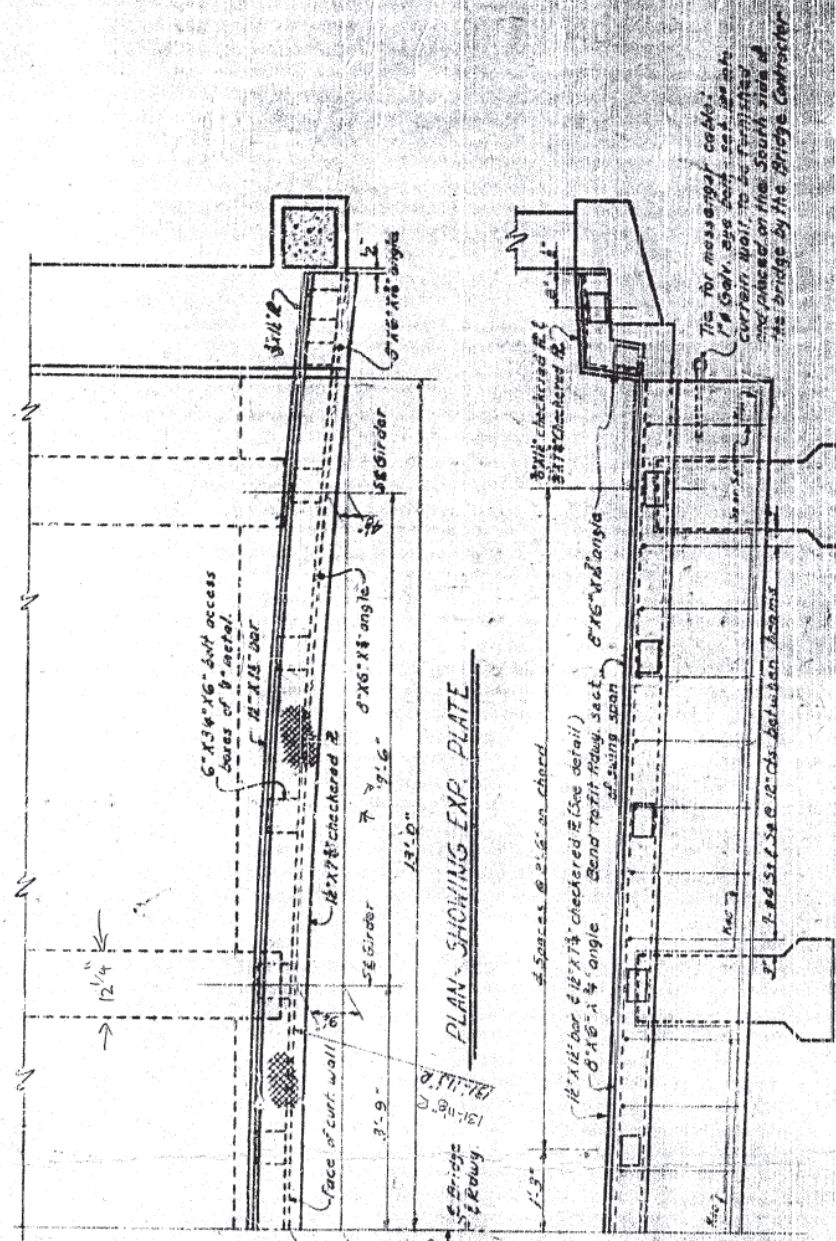
Drawn by: [Signature]  
Checked by: [Signature]  
Approved by: [Signature]



BAR NO.	LENGTH	QUANTITY	WEIGHT
27	28'-9"	1	12.5
28	28'-9"	1	12.5
29	28'-9"	1	12.5
30	28'-9"	1	12.5
31	28'-9"	1	12.5
32	28'-9"	1	12.5
33	28'-9"	1	12.5
34	28'-9"	1	12.5
35	28'-9"	1	12.5
36	28'-9"	1	12.5
37	28'-9"	1	12.5
38	28'-9"	1	12.5
39	28'-9"	1	12.5
40	28'-9"	1	12.5
41	28'-9"	1	12.5
42	28'-9"	1	12.5
43	28'-9"	1	12.5
44	28'-9"	1	12.5
45	28'-9"	1	12.5
46	28'-9"	1	12.5
47	28'-9"	1	12.5
48	28'-9"	1	12.5
49	28'-9"	1	12.5
50	28'-9"	1	12.5
51	28'-9"	1	12.5
52	28'-9"	1	12.5
53	28'-9"	1	12.5
54	28'-9"	1	12.5
55	28'-9"	1	12.5
56	28'-9"	1	12.5
57	28'-9"	1	12.5
58	28'-9"	1	12.5
59	28'-9"	1	12.5
60	28'-9"	1	12.5
61	28'-9"	1	12.5
62	28'-9"	1	12.5
63	28'-9"	1	12.5
64	28'-9"	1	12.5
65	28'-9"	1	12.5
66	28'-9"	1	12.5
67	28'-9"	1	12.5
68	28'-9"	1	12.5
69	28'-9"	1	12.5
70	28'-9"	1	12.5
71	28'-9"	1	12.5
72	28'-9"	1	12.5
73	28'-9"	1	12.5
74	28'-9"	1	12.5
75	28'-9"	1	12.5
76	28'-9"	1	12.5
77	28'-9"	1	12.5
78	28'-9"	1	12.5
79	28'-9"	1	12.5
80	28'-9"	1	12.5
81	28'-9"	1	12.5
82	28'-9"	1	12.5
83	28'-9"	1	12.5
84	28'-9"	1	12.5
85	28'-9"	1	12.5
86	28'-9"	1	12.5
87	28'-9"	1	12.5
88	28'-9"	1	12.5
89	28'-9"	1	12.5
90	28'-9"	1	12.5
91	28'-9"	1	12.5
92	28'-9"	1	12.5
93	28'-9"	1	12.5
94	28'-9"	1	12.5
95	28'-9"	1	12.5
96	28'-9"	1	12.5
97	28'-9"	1	12.5
98	28'-9"	1	12.5
99	28'-9"	1	12.5
100	28'-9"	1	12.5

**BILL OF MATERIAL FOR ONE SPAN (ONE REAR)**

BAR NO.	LENGTH	QUANTITY	WEIGHT
27	28'-9"	1	12.5
28	28'-9"	1	12.5
29	28'-9"	1	12.5
30	28'-9"	1	12.5
31	28'-9"	1	12.5
32	28'-9"	1	12.5
33	28'-9"	1	12.5
34	28'-9"	1	12.5
35	28'-9"	1	12.5
36	28'-9"	1	12.5
37	28'-9"	1	12.5
38	28'-9"	1	12.5
39	28'-9"	1	12.5
40	28'-9"	1	12.5
41	28'-9"	1	12.5
42	28'-9"	1	12.5
43	28'-9"	1	12.5
44	28'-9"	1	12.5
45	28'-9"	1	12.5
46	28'-9"	1	12.5
47	28'-9"	1	12.5
48	28'-9"	1	12.5
49	28'-9"	1	12.5
50	28'-9"	1	12.5
51	28'-9"	1	12.5
52	28'-9"	1	12.5
53	28'-9"	1	12.5
54	28'-9"	1	12.5
55	28'-9"	1	12.5
56	28'-9"	1	12.5
57	28'-9"	1	12.5
58	28'-9"	1	12.5
59	28'-9"	1	12.5
60	28'-9"	1	12.5
61	28'-9"	1	12.5
62	28'-9"	1	12.5
63	28'-9"	1	12.5
64	28'-9"	1	12.5
65	28'-9"	1	12.5
66	28'-9"	1	12.5
67	28'-9"	1	12.5
68	28'-9"	1	12.5
69	28'-9"	1	12.5
70	28'-9"	1	12.5
71	28'-9"	1	12.5
72	28'-9"	1	12.5
73	28'-9"	1	12.5
74	28'-9"	1	12.5
75	28'-9"	1	12.5
76	28'-9"	1	12.5
77	28'-9"	1	12.5
78	28'-9"	1	12.5
79	28'-9"	1	12.5
80	28'-9"	1	12.5
81	28'-9"	1	12.5
82	28'-9"	1	12.5
83	28'-9"	1	12.5
84	28'-9"	1	12.5
85	28'-9"	1	12.5
86	28'-9"	1	12.5
87	28'-9"	1	12.5
88	28'-9"	1	12.5
89	28'-9"	1	12.5
90	28'-9"	1	12.5
91	28'-9"	1	12.5
92	28'-9"	1	12.5
93	28'-9"	1	12.5
94	28'-9"	1	12.5
95	28'-9"	1	12.5
96	28'-9"	1	12.5
97	28'-9"	1	12.5
98	28'-9"	1	12.5
99	28'-9"	1	12.5
100	28'-9"	1	12.5



PROJECT NO. 811907  
 TYRELL-DARE COUNTY  
 STATION: 65+65  
 ALTERNATE 'A'

STATE OF NORTH CAROLINA  
 STATE HIGHWAY COMMISSION  
 SUPERSTRUCTURE  
 SPAN ADJACENT  
 TO SWING SPAN WEST SIDE

RAIL ELEVATION  
 EXPANSION PLATE DETAIL  
 SECTION A-A  
 SECTION C-C  
 SECTION E-E

REINFORCING STEEL LBS. 2  
 CLASS B WINKER LBS. 100  
 36 PRESTR. GIRDERS NO. 17  
 85 PRESTR. GIRDERS (IN FT. 20)

(If you must copy from this drawing, please use a 1/8" = 1'-0" scale)















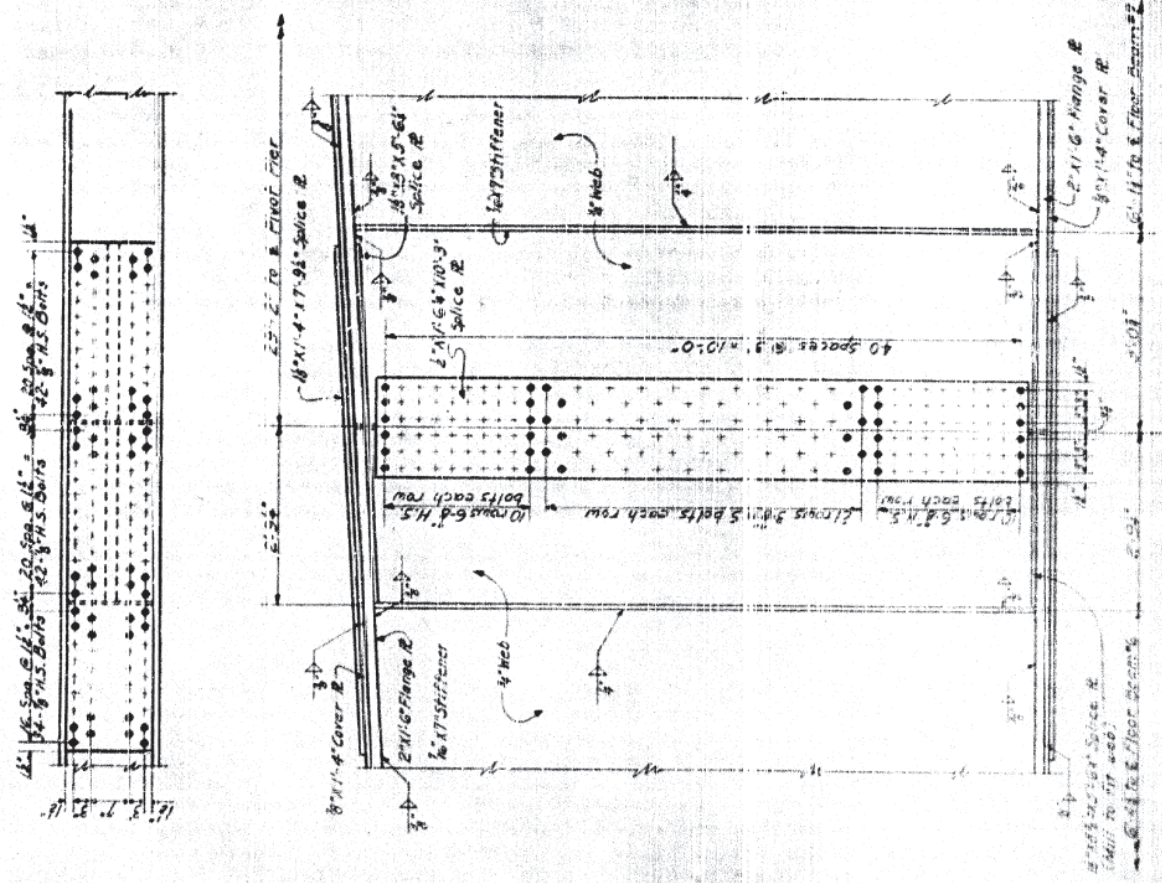
NO. 1	NO. 2	NO. 3	NO. 4	NO. 5
EA Proj. 5-1907				

PROJECT NO. B.11907  
 TYRBELL DARE COUNTY

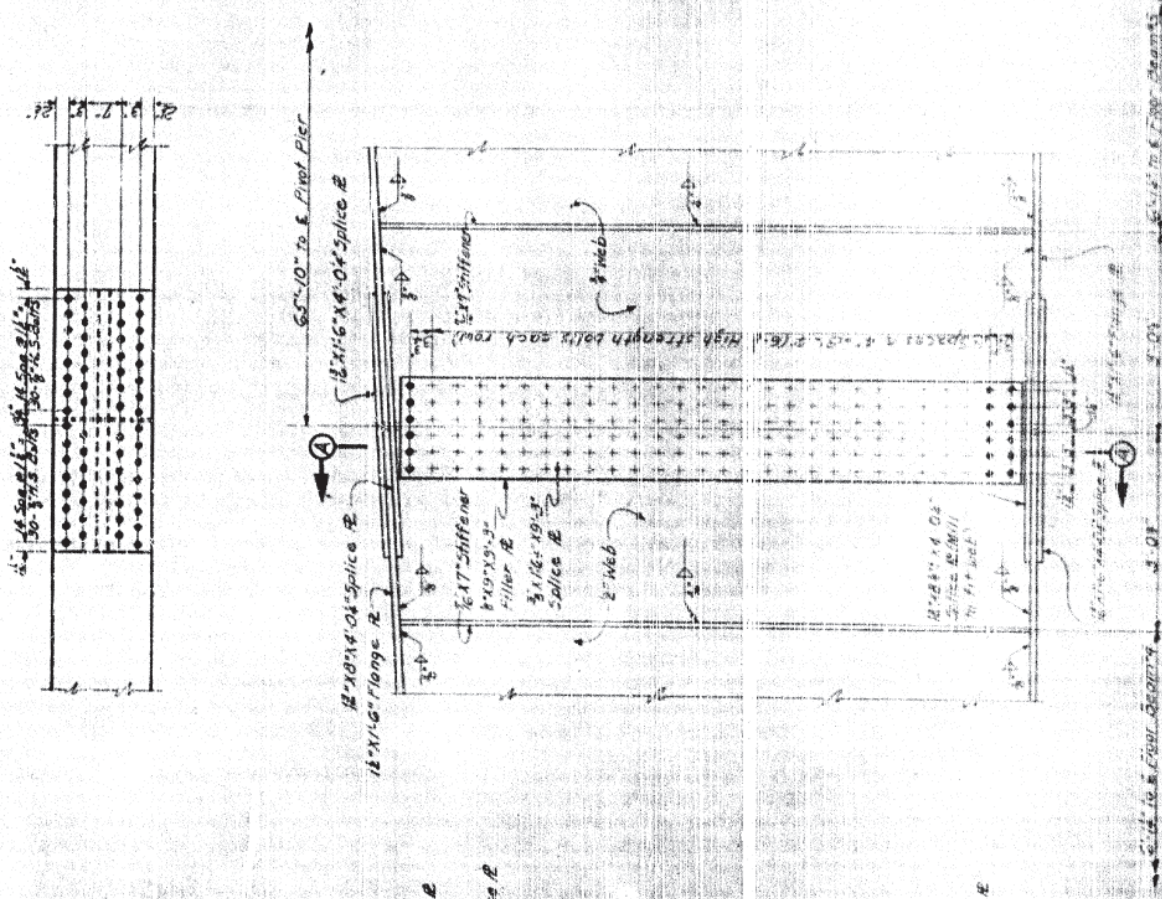
STATION: 65+65  
 ALTERNATE A or B

STATE OF NORTH CAROLINA  
 STATE HIGHWAY COMMISSION  
 SWING SPAN FIELD SPLICE  
 DETAILS

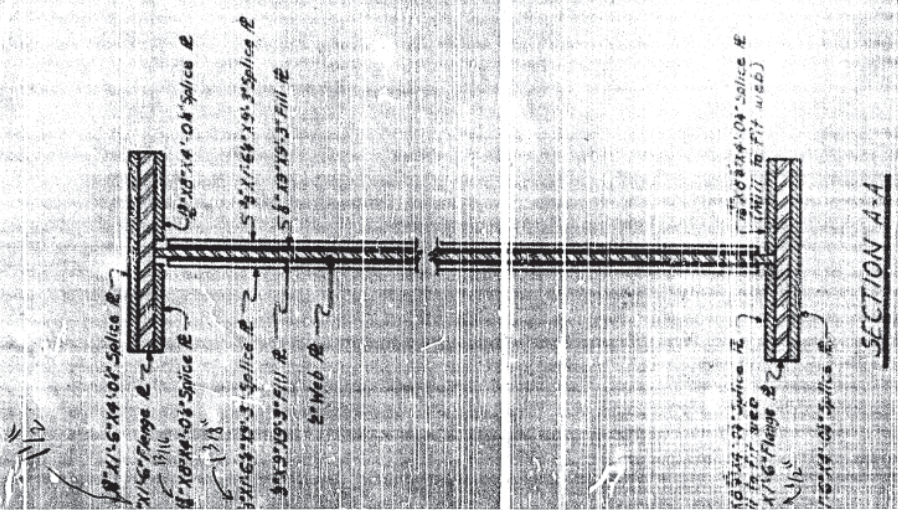
DATE	BY	CHKD.	APP'D.
SCALE			



SPLICE DETAIL



SPLICE DETAIL



SECTION A-A

DATE: 11-1-55  
 BY: [Signature]  
 CHKD.: [Signature]  
 APP'D.: [Signature]



DATE	BY	CHKD	APP'D
C.A. No. 3-22610			

**NOTES:**

- Turning motor shall be 20 H.P. based reducer shall have differential.
- The bridge shall open counter clockwise so that failure of limit switches will not cause any damage by overdriving.
- The rack shall consist of 12 equal sections, joints in rack shall be offset from starting -- spanning position.
- The wedge motor shall be 7 1/2 H.P.
- For additional Design Data and general notes see Special Provisions.

PROJECT NO. 811907

TYRRELL-DARE COUNTY

STATION: 65+65

ALTERNATE A or B

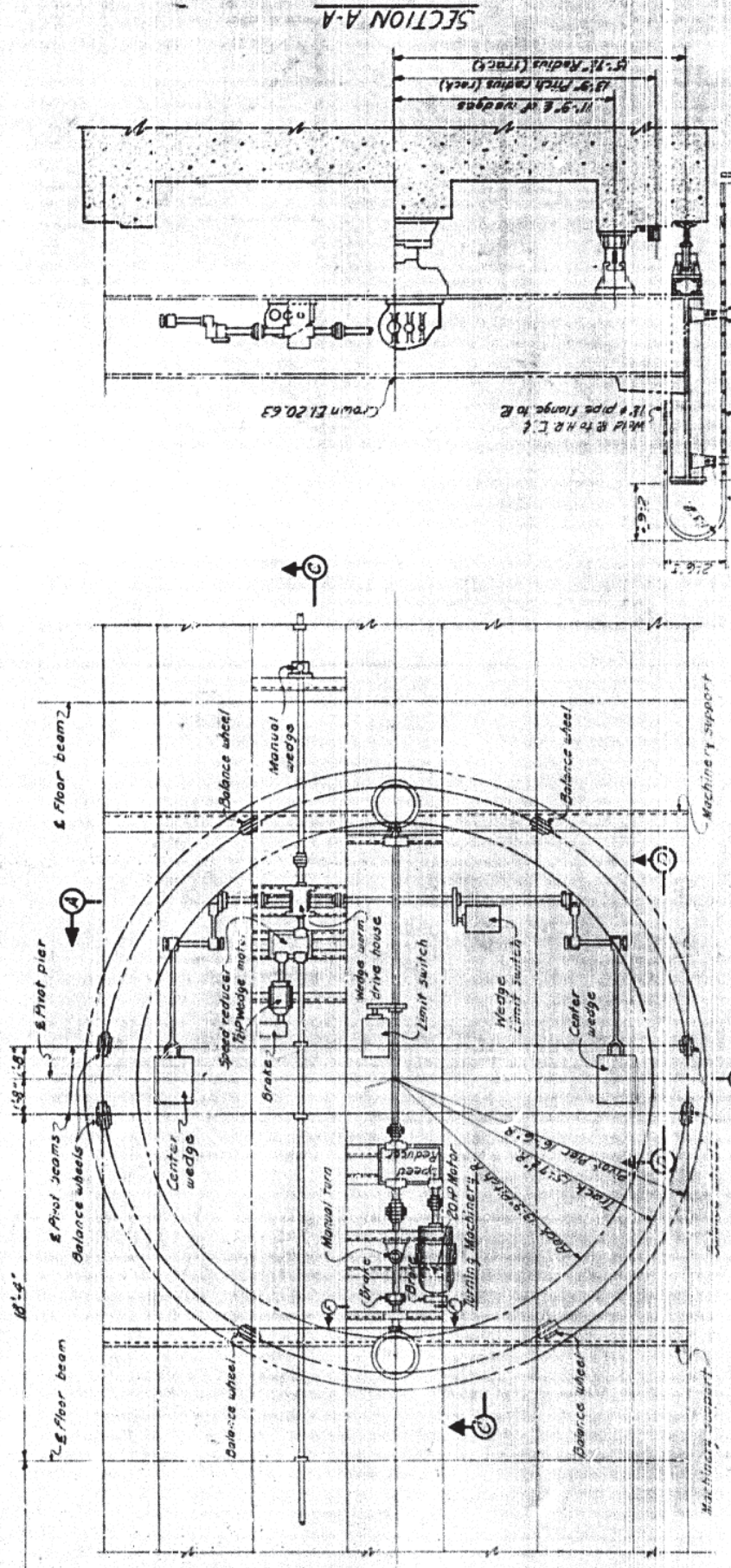
STATE OF NORTH CAROLINA

LAYOUT PLAN FOR

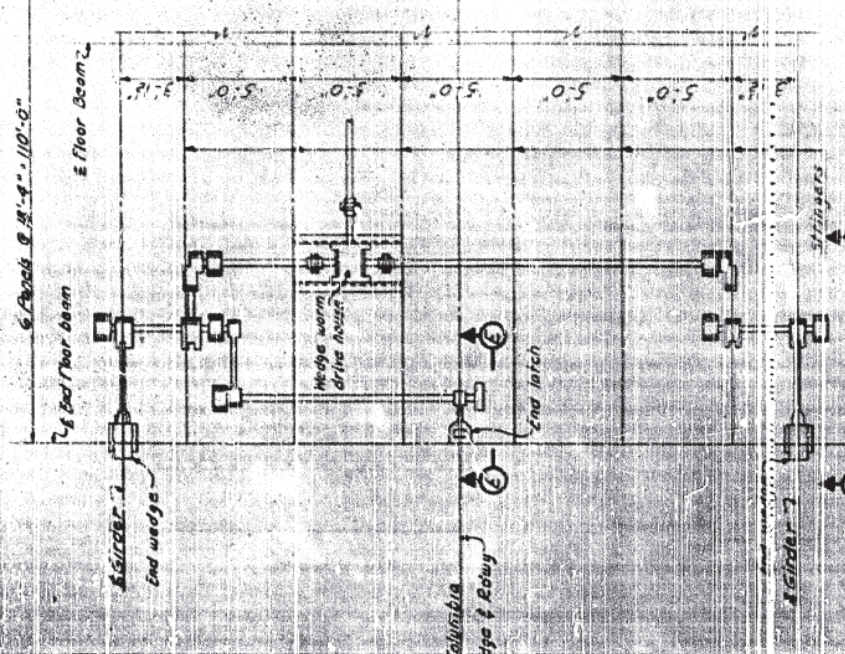
SWING SPAN MACHINERY

OCTOBER 1959

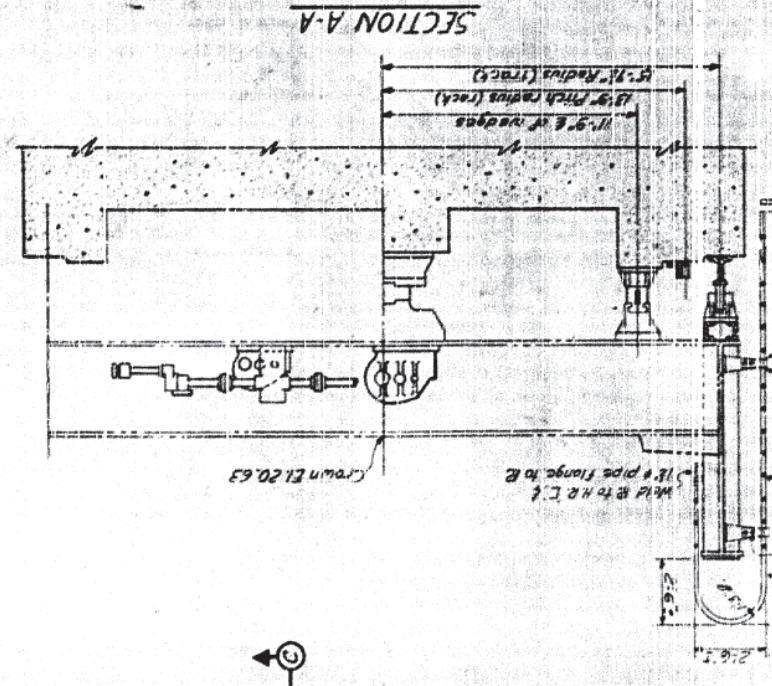
NO.	DESCRIPTION	DATE
1	ISSUED FOR PERMIT	10/1/59
2	ISSUED FOR CONSTRUCTION	10/1/59
3	ISSUED FOR RECORD	10/1/59



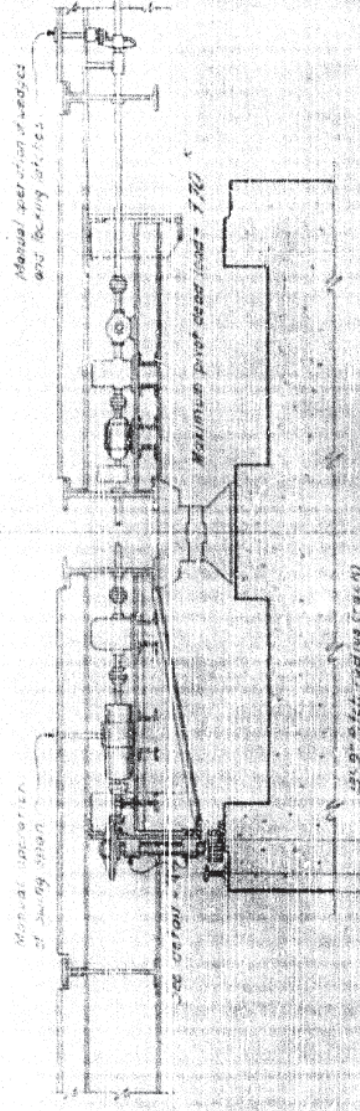
PLAN AT CENTER



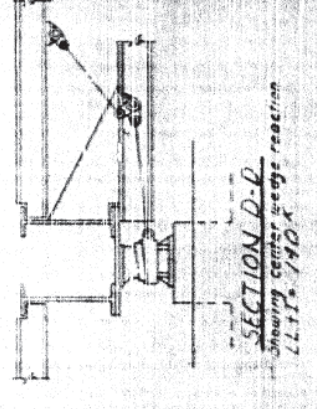
PLAN AT END



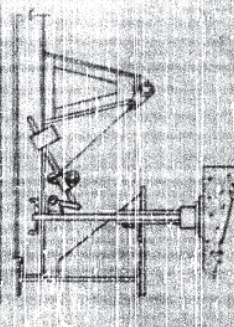
SECTION A-A



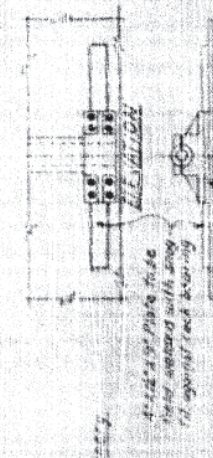
SECTION B-B  
(Showing and wedge reaction)  
Pinions Max. LL Avg. LL, Min. LL = 12.0"  
Total Maximum Load in Section = 720 LBS



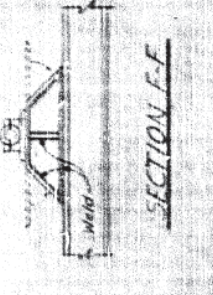
SECTION D-D  
Showing center wedge reaction  
LL = 1.140 x



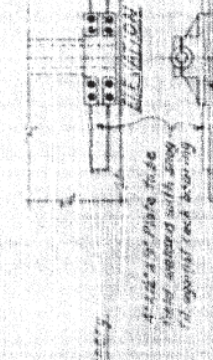
SECTION E-E  
(Showing end latch)



SECTION C-C  
Showing Machinery Support



SECTION F-F  
Showing center wedge reaction



DETAIL A

Checked by P. J. ...  
Approved by ...



FA.P. 3726(10)

**BILL OF MATERIAL FOR PIVOT PIER**

BAR	NO.	LEN.	TYPE	LENGTH	VOLUME
B1	10	7.1	1	6.8	1.2
B2	4	4.7	1	4.8	0.8
B3	4	4.7	1	4.8	0.8
B4	24	4.7	1	4.8	2.8
B5	16	4.5	1	3.8	1.8
B6	8	4.5	1	3.8	0.9
B7	4	4.5	1	3.8	0.45
B8	4	4.5	1	3.8	0.45
B9	4	4.5	1	3.8	0.45
B10	4	4.5	1	3.8	0.45
B11	4	4.5	1	3.8	0.45
B12	4	4.5	1	3.8	0.45
B13	4	4.5	1	3.8	0.45
B14	4	4.5	1	3.8	0.45
B15	4	4.5	1	3.8	0.45
B16	4	4.5	1	3.8	0.45
B17	4	4.5	1	3.8	0.45
B18	4	4.5	1	3.8	0.45
B19	4	4.5	1	3.8	0.45
B20	4	4.5	1	3.8	0.45
B21	4	4.5	1	3.8	0.45
B22	4	4.5	1	3.8	0.45
B23	4	4.5	1	3.8	0.45
B24	4	4.5	1	3.8	0.45
B25	4	4.5	1	3.8	0.45
B26	4	4.5	1	3.8	0.45
B27	4	4.5	1	3.8	0.45
B28	4	4.5	1	3.8	0.45
B29	4	4.5	1	3.8	0.45
B30	4	4.5	1	3.8	0.45
B31	4	4.5	1	3.8	0.45
B32	4	4.5	1	3.8	0.45
B33	4	4.5	1	3.8	0.45
B34	4	4.5	1	3.8	0.45
B35	4	4.5	1	3.8	0.45
B36	4	4.5	1	3.8	0.45
B37	4	4.5	1	3.8	0.45
B38	4	4.5	1	3.8	0.45
B39	4	4.5	1	3.8	0.45
B40	4	4.5	1	3.8	0.45
B41	4	4.5	1	3.8	0.45
B42	4	4.5	1	3.8	0.45
B43	4	4.5	1	3.8	0.45
B44	4	4.5	1	3.8	0.45
B45	4	4.5	1	3.8	0.45
B46	4	4.5	1	3.8	0.45
B47	4	4.5	1	3.8	0.45
B48	4	4.5	1	3.8	0.45
B49	4	4.5	1	3.8	0.45
B50	4	4.5	1	3.8	0.45
B51	4	4.5	1	3.8	0.45
B52	4	4.5	1	3.8	0.45
B53	4	4.5	1	3.8	0.45
B54	4	4.5	1	3.8	0.45
B55	4	4.5	1	3.8	0.45
B56	4	4.5	1	3.8	0.45
B57	4	4.5	1	3.8	0.45
B58	4	4.5	1	3.8	0.45
B59	4	4.5	1	3.8	0.45
B60	4	4.5	1	3.8	0.45
B61	4	4.5	1	3.8	0.45
B62	4	4.5	1	3.8	0.45
B63	4	4.5	1	3.8	0.45
B64	4	4.5	1	3.8	0.45
B65	4	4.5	1	3.8	0.45
B66	4	4.5	1	3.8	0.45
B67	4	4.5	1	3.8	0.45
B68	4	4.5	1	3.8	0.45
B69	4	4.5	1	3.8	0.45
B70	4	4.5	1	3.8	0.45
B71	4	4.5	1	3.8	0.45
B72	4	4.5	1	3.8	0.45
B73	4	4.5	1	3.8	0.45
B74	4	4.5	1	3.8	0.45
B75	4	4.5	1	3.8	0.45
B76	4	4.5	1	3.8	0.45
B77	4	4.5	1	3.8	0.45
B78	4	4.5	1	3.8	0.45
B79	4	4.5	1	3.8	0.45
B80	4	4.5	1	3.8	0.45
B81	4	4.5	1	3.8	0.45
B82	4	4.5	1	3.8	0.45
B83	4	4.5	1	3.8	0.45
B84	4	4.5	1	3.8	0.45
B85	4	4.5	1	3.8	0.45
B86	4	4.5	1	3.8	0.45
B87	4	4.5	1	3.8	0.45
B88	4	4.5	1	3.8	0.45
B89	4	4.5	1	3.8	0.45
B90	4	4.5	1	3.8	0.45
B91	4	4.5	1	3.8	0.45
B92	4	4.5	1	3.8	0.45
B93	4	4.5	1	3.8	0.45
B94	4	4.5	1	3.8	0.45
B95	4	4.5	1	3.8	0.45
B96	4	4.5	1	3.8	0.45
B97	4	4.5	1	3.8	0.45
B98	4	4.5	1	3.8	0.45
B99	4	4.5	1	3.8	0.45
B100	4	4.5	1	3.8	0.45

PROJECT NO. B.1927  
 TYRELL-DAKE COUNTY  
 STATION: 65 + 65  
 Alternate A of B  
 STATE OF NORTH CAROLINA  
 STATE HIGHWAY COMMISSION  
 PIVOT PIER  
 OCTOBER, 1959

①

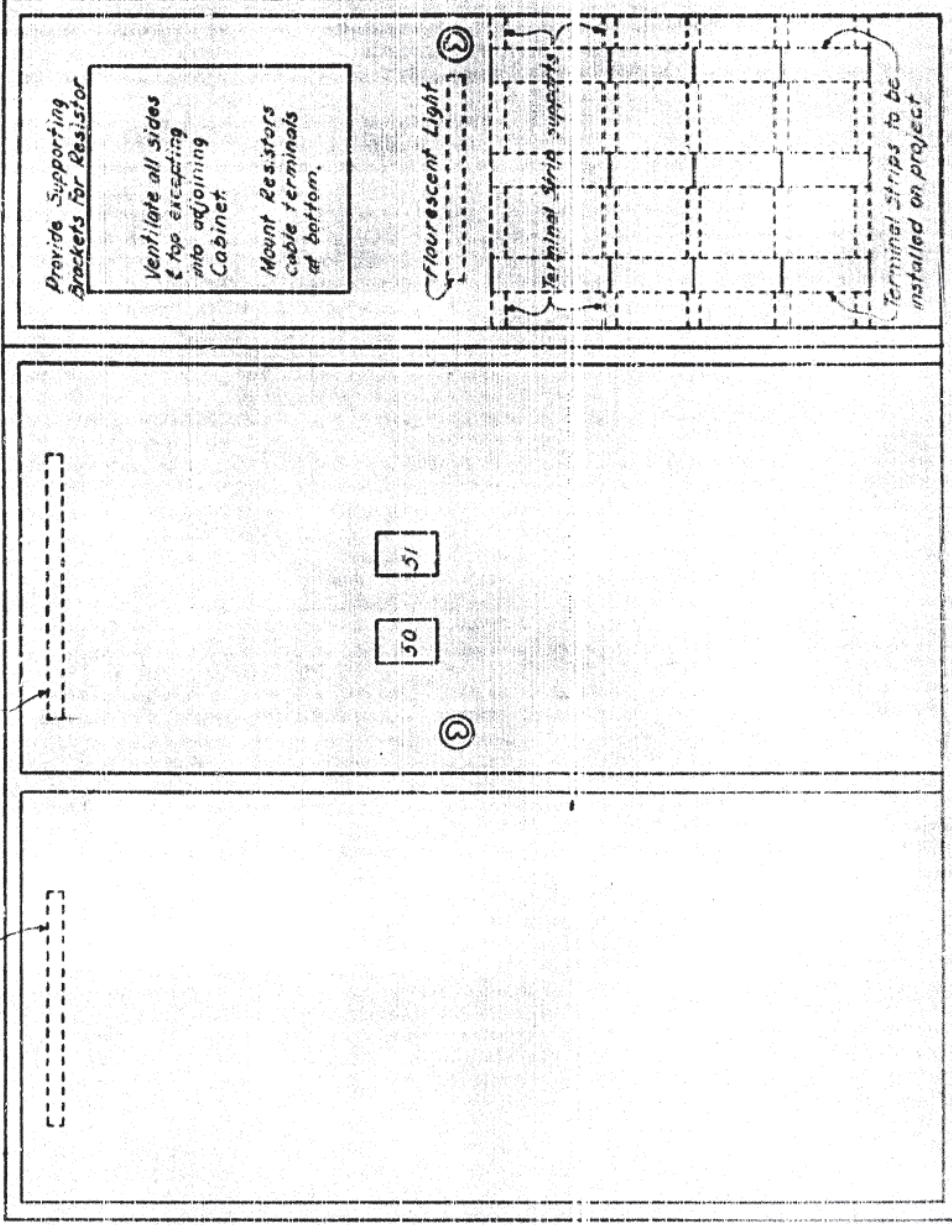
NO.	LEN.	TYPE	LENGTH	VOLUME
10	7.1	1	6.8	1.2
11	4.7	1	4.8	0.8
12	4.7	1	4.8	0.8
13	4.7	1	4.8	0.8
14	4.7	1	4.8	0.8
15	4.7	1	4.8	0.8
16	4.7	1	4.8	0.8
17	4.7	1	4.8	0.8
18	4.7	1	4.8	0.8
19	4.7	1	4.8	0.8
20	4.7	1	4.8	0.8
21	4.7	1	4.8	0.8
22	4.7	1	4.8	0.8
23	4.7	1	4.8	0.8
24	4.7	1	4.8	0.8
25	4.7	1	4.8	0.8
26	4.7	1	4.8	0.8
27	4.7	1	4.8	0.8
28	4.7	1	4.8	0.8
29	4.7	1	4.8	0.8
30	4.7	1	4.8	0.8
31	4.7	1	4.8	0.8
32	4.7	1	4.8	0.8
33	4.7	1	4.8	0.8
34	4.7	1	4.8	0.8
35	4.7	1	4.8	0.8
36	4.7	1	4.8	0.8
37	4.7	1	4.8	0.8
38	4.7	1	4.8	0.8
39	4.7	1	4.8	0.8
40	4.7	1	4.8	0.8
41	4.7	1	4.8	0.8
42	4.7	1	4.8	0.8
43	4.7	1	4.8	0.8
44	4.7	1	4.8	0.8
45	4.7	1	4.8	0.8
46	4.7	1	4.8	0.8
47	4.7	1	4.8	0.8
48	4.7	1	4.8	0.8
49	4.7	1	4.8	0.8
50	4.7	1	4.8	0.8
51	4.7	1	4.8	0.8
52	4.7	1	4.8	0.8
53	4.7	1	4.8	0.8
54	4.7	1	4.8	0.8
55	4.7	1	4.8	0.8
56	4.7	1	4.8	0.8
57	4.7	1	4.8	0.8
58	4.7	1	4.8	0.8
59	4.7	1	4.8	0.8
60	4.7	1	4.8	0.8
61	4.7	1	4.8	0.8
62	4.7	1	4.8	0.8
63	4.7	1	4.8	0.8
64	4.7	1	4.8	0.8
65	4.7	1	4.8	0.8
66	4.7	1	4.8	0.8
67	4.7	1	4.8	0.8
68	4.7	1	4.8	0.8
69	4.7	1	4.8	0.8
70	4.7	1	4.8	0.8
71	4.7	1	4.8	0.8
72	4.7	1	4.8	0.8
73	4.7	1	4.8	0.8
74	4.7	1	4.8	0.8
75	4.7	1	4.8	0.8
76	4.7	1	4.8	0.8
77	4.7	1	4.8	0.8
78	4.7	1	4.8	0.8
79	4.7	1	4.8	0.8
80	4.7	1	4.8	0.8
81	4.7	1	4.8	0.8
82	4.7	1	4.8	0.8
83	4.7	1	4.8	0.8
84	4.7	1	4.8	0.8
85	4.7	1	4.8	0.8
86	4.7	1	4.8	0.8
87	4.7	1	4.8	0.8
88	4.7	1	4.8	0.8
89	4.7	1	4.8	0.8
90	4.7	1	4.8	0.8
91	4.7	1	4.8	0.8
92	4.7	1	4.8	0.8
93	4.7	1	4.8	0.8
94	4.7	1	4.8	0.8
95	4.7	1	4.8	0.8
96	4.7	1	4.8	0.8
97	4.7	1	4.8	0.8
98	4.7	1	4.8	0.8
99	4.7	1	4.8	0.8
100	4.7	1	4.8	0.8

②

NO.	LEN.	TYPE	LENGTH	VOLUME
10	7.1	1	6.8	1.2
11	4.7	1	4.8	0.8
12	4.7	1	4.8	0.8
13	4.7	1	4.8	0.8
14	4.7	1	4.8	0.8
15	4.7	1	4.8	0.8
16	4.7	1	4.8	0.8
17	4.7	1	4.8	0.8
18	4.7	1	4.8	0.8
19	4.7	1	4.8	0.8
20	4.7	1	4.8	0.8
21	4.7	1	4.8	0.8
22	4.7	1	4.8	0.8
23	4.7	1	4.8	0.8
24	4.7	1	4.8	0.8
25	4.7	1	4.8	0.8
26	4.7	1	4.8	0.8
27	4.7	1	4.8	0.8
28	4.7	1	4.8	0.8
29	4.7	1	4.8	0.8
30	4.7	1	4.8	0.8
31	4.7	1	4.8	0.8
32	4.7	1	4.8	0.8
33	4.7	1	4.8	0.8
34	4.7	1	4.8	0.8
35	4.7	1	4.8	0.8
36	4.7	1	4.8	0.8
37	4.7	1	4.8	0.8
38	4.7	1	4.8	0.8
39	4.7	1	4.8	0.8
40	4.7	1	4.8	0.8
41	4.7	1	4.8	0.8
42	4.7	1	4.8	0.8
43	4.7	1	4.8	0.8
44	4.7	1	4.8	0.8
45	4.7	1	4.8	0.8
46	4.7	1	4.8	0.8
47	4.7	1	4.8	0.8
48	4.7	1	4.8	0.8
49	4.7	1	4.8	0.8
50	4.7	1	4.8	0.8
51	4.7	1	4.8	0.8
52	4.7	1	4.8	0.8
53	4.7	1	4.8	0.8
54	4.7	1	4.8	0.8
55	4.7	1	4.8	0.8
56	4.7	1	4.8	0.8
57	4.7	1	4.8	0.8
58	4.7	1	4.8	0.8
59	4.7	1	4.8	0.8
60	4.7	1	4.8	0.8
61	4.7	1	4.8	0.8
62	4.7	1	4.8	0.8
63	4.7	1	4.8	0.8
64	4.7	1	4.8	0.8
65	4.7	1	4.8	0.8
66	4.7	1	4.8	0.8
67	4.7	1	4.8	0.8
68	4.7	1	4.8	0.8
69	4.7	1	4.8	0.8
70	4.7	1	4.8	0.8
71	4.7	1	4.8	0.8
72	4.7	1	4.8	0.8
73	4.7	1	4.8	0.8
74	4.7	1	4.8	0.8
75	4.7	1	4.8	0.8
76	4.7	1	4.8	0.8
77	4.7	1	4.8	0.8
78	4.7	1	4.8	0.8
79	4.7	1	4.8	0.8
80	4.7	1	4.8	0.8
81	4.7	1	4.8	0.8
82	4.7	1	4.8	0.8
83	4.7	1	4.8	0.8
84	4.7	1	4.8	0.8
85	4.7	1	4.8	



Fluorescent Lights  
(Front & Back)



FRONT VIEW OF CONTROL PANEL

Max. Panel Dimensions - Height - 72"  
Length - 60"  
Depth - 31"

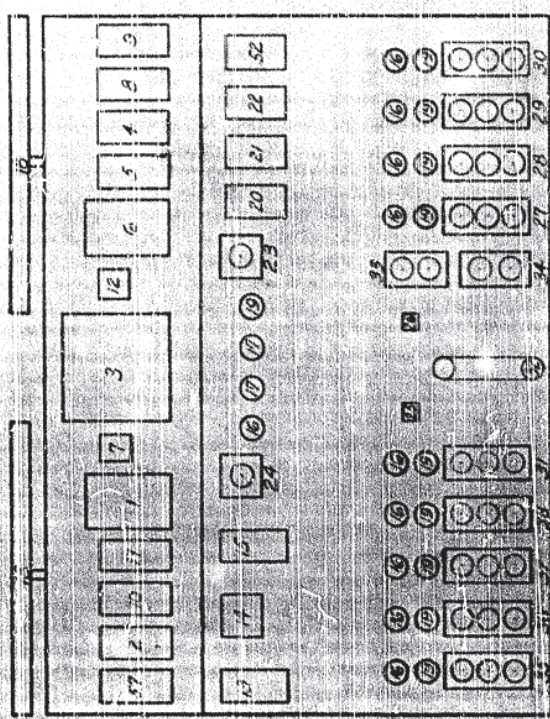
RESISTOR CABINET

Max. Cabinet Dimensions - Height - 72"  
Length - 24"  
Depth - 31"

PROJECT No. 2.11907  
TYBRELL - RARE COUNTY  
STATION 65165  
ALTERNATE A or B

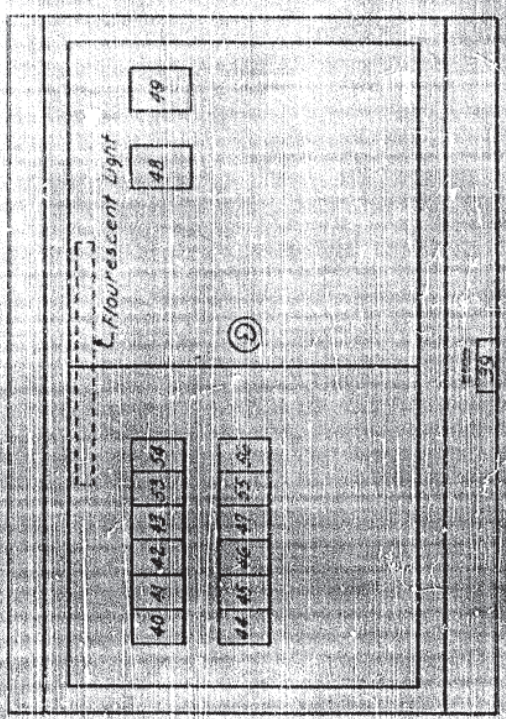
STATE OF NORTH CAROLINA  
STATE HIGHWAY COMMISSION  
LAYOUT FOR CONTROL  
PANEL AND CONTROL DESK  
IN OPERATOR'S HOUSE  
JAN. 1966

- 1 - Voltmeter
- 2 - By Pass Gate Control
- 3 - Position Indicator
- 4 - By Pass Weage Control
- 5 - By Pass Span Control
- 6 - Ammeter
- 7 - Voltmeter Switch
- 8 - Far Oncoming Barrier By Pass Switch
- 9 - Far Offgoing Barrier By Pass Switch
- 10 - Near Oncoming Barrier By Pass Switch
- 11 - Near Offgoing Barrier By Pass Switch
- 12 - Ammeter Switch
- 13 - Control Switch
- 14 - Main Air Circuit Breaker Switch
- 15 - Roadway Traffic Control Switch
- 16 - Red Indicating Light
- 17 - White Indicating Light
- 18 - Green Fluorescent Light(s)
- 19 - Green Indicating Light
- 20 - Indicating Light Switch
- 21 - Navigation Light Switch
- 22 - Bell Cut-out Switch
- 23 - Siren PB
- 24 - Service Brake
- 25 - Counter-clockwise Open
- 26 - Trucking Close
- 27 - Far Oncoming Roadway Gate PB Station
- 28 - Far Offgoing Roadway Gate PB Station
- 29 - Far Oncoming Barrier PB Station
- 30 - Far Offgoing Barrier PB Station
- 31 - Weage PB Station
- 32 - Span Drum Lever, Siter
- 33 - Barrier Group Lower PB Station
- 34 - Gate Group Raise PB Station
- 35 - Near Oncoming & Offgoing to the PB Station
- 36 - Near Offgoing & Oncoming to the PB Station
- 37 - Near Oncoming Barrier PB Station
- 38 - Near Offgoing Barrier PB Station
- 39 - Gate PB Station
- 40 - 20 Amp SP Breaker Roadway Traffic Signals, Includes Barrier Lights
- 41 - 10 Amp SP Breaker Navigation Lights & Indicator Lights
- 42 - 10 Amp SP Breaker Position Indicator & Indicating Lights
- 43 - 15 Amp SP Breaker - Desk & Panel Heaters & Lights
- 44 - 15 Amp SP Breaker - Machinery Room Wall Heater, Meter Fan, Battery Charger
- 45 - 15 Amp SP Breaker - Barrier House & Center Over Cables
- 46 - 15 Amp SP Breaker Siren
- 47 - 15 Amp SP Breaker Water Pump
- 48 - Interior Desk Light Switch
- 49 - Control Desk Heater Switch
- 50 - Interior Control Panel Light Switch
- 51 - Control Room Heater Switch
- 52 - Desk Light (Panic) Switch
- 53 - 10 Amp SP Breaker - Control Room & Machinery Room Lights
- 54 - 10 Amp SP Breaker - Battery Charger
- 55 - 10 Amp SP Breaker - Channel Floodlights
- 56 - 15 Amp SP Breaker - Control Room Wall Outlets
- 57 - Channel Floodlight Switch



TOP VIEW OF CONTROL DESK

Max. Desk Dimensions  
Length - 66"  
Width - 34"  
Height - 41" (Pinnacle)  
Height - 35" (Flat Top)



FRONT VIEW OF CONTROL DESK