

08-DEC-2015 12:37
 C:\User\srwest\Desktop\Martin 15-16\15-16 Martin Resurfacing\2016CPT.01.16.20211.1 Rdy_atn_resurfacingchowancounty.dgn
 At DICAD265786

09/08/99

CONTRACT NO. : DA00277 WBS ELEMENT : 2016CPT.01.16.20211.1 ETC.



STATE OF NORTH CAROLINA
 DIVISION OF HIGHWAYS

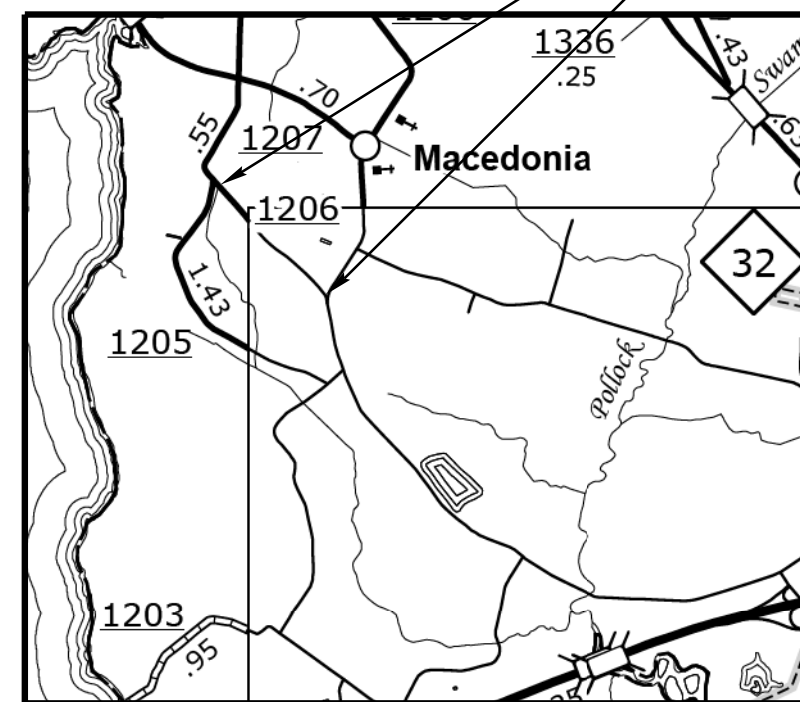
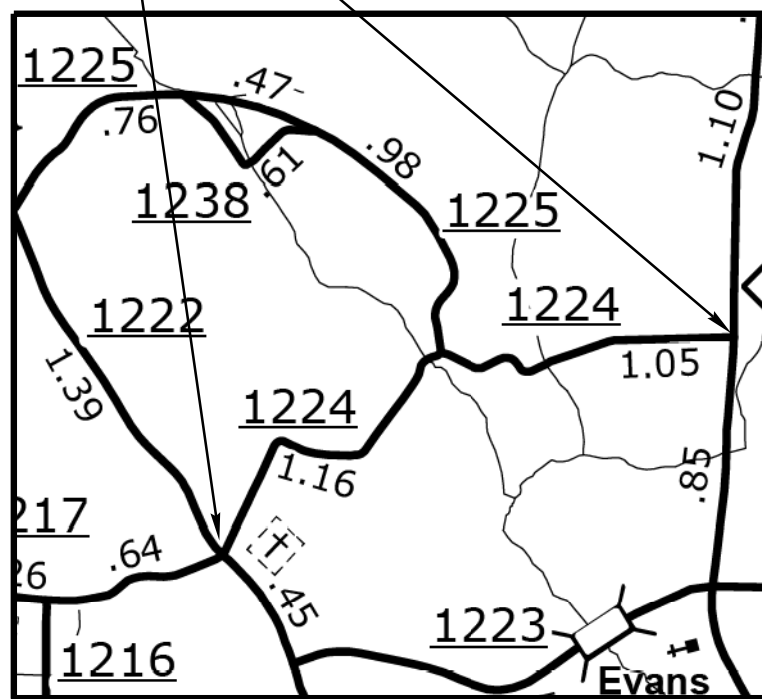
CHOWAN COUNTY

STATE	STATE PROJECT REFERENCE NO.	SHEET NO.	TOTAL SHEETS
N.C.	2016CPT.01.16.20211.1 ETC.	1	
STATE PROJ. NO.	F.A. PROJ. NO.	DESCRIPTION	

LOCATION: MAP #1 SR 1224 (FROM NC 32 TO SR 1222)
 MAP #2 SR 1206 (FROM SR 1207 TO SR 1200)
 TYPE OF WORK: RESURFACING

SR 1224 MAP # 1

SR 1206 MAP # 2



NOT TO SCALE

PROJECT LENGTH

LENGTH OF ROADWAY PROJECT MAP# 1 = 2.20 MILES

LENGTH OF ROADWAY PROJECT MAP# 2 = 1.40 MILES

Prepared in the Office of:
DIVISION OF HIGHWAYS

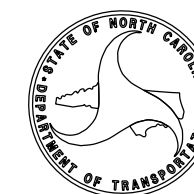
2012 STANDARD SPECIFICATIONS

LETTING DATE:

W.B. HOBBS, P.E.
 DIVISION PROJECT MANAGER

C.E. SLACHTA
 DIVISION PROPOSALS ENGINEER

DIVISION OF HIGHWAYS
 STATE OF NORTH CAROLINA



08-DEC-2015 12:37
 C:\Users\rwest\Desktop\Martin 15-16\15-16 Martin Resurfacing\2016CPT.01.16.Rdy_atn_resurfacingchowmartin.dgn
 AT DICAD265786
 rwest

09/08/09

CONTRACT NO.: DA00277 WBS ELEMENT : 2016CPT.01.16.20211.1 ETC.



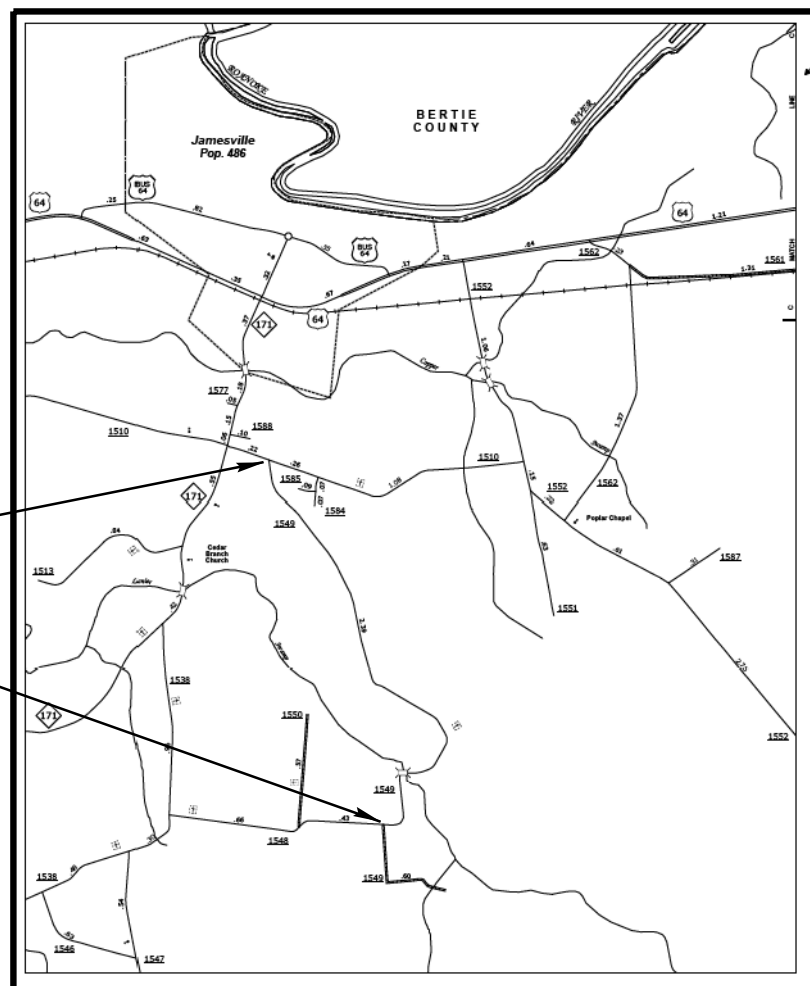
STATE OF NORTH CAROLINA
 DIVISION OF HIGHWAYS

MARTIN COUNTY

LOCATIONMAP #3 SR 1549 (FROM SR 1510 TO SR 1548)
 TYPE OF WORK: RESURFACING

STATE	STATE PROJECT REFERENCE NO.	SHEET NO.	TOTAL SHEETS
N.C.	2016CPT.01.16.20211.1 ETC.	2	
STATE PROJ.NO.	F.A.PROJ.NO.	DESCRIPTION	

SR 1549 MAP # 3



NOT TO SCALE

PROJECT LENGTH

LENGTH OF ROADWAY PROJECT MAP# 3 = 2.40 MILES

Prepared in the Office of:
DIVISION OF HIGHWAYS

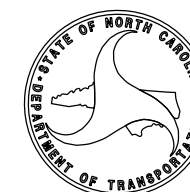
2012 STANDARD SPECIFICATIONS

LETTING DATE:

W.B. HOBBS, P.E.
 DIVISION PROJECT MANAGER

C.E. SLACHTA
 DIVISION PROPOSALS ENGINEER

DIVISION OF HIGHWAYS
 STATE OF NORTH CAROLINA



08-DEC-2015 12:39 C:\Users\rgwest\Desktop\Martin 15-16\15-16 Martin Resurfacing\2016CPT.01.09._Rdy_atn_resurfacingchowmartin.dgn At DICAD265786 rgwest

09/08/99

CONTRACT NO. : DA00277 WBS ELEMENT : 2016CPT.01.16.20211.1 ETC.



STATE OF NORTH CAROLINA
DIVISION OF HIGHWAYS

MARTIN COUNTY

**LOCATION: MAP #4 SR 1408 (FROM SR 1407 TO SR 1409) /MAP# 5 SR 1423 (FROM SR 1409 TO SR 1420)
MAP #6 SR 1129 (FROM SR 1001 TO SR 1128) /MAP #7 SR 1442 (FROM SR 1420 TO SR DEAD END)**

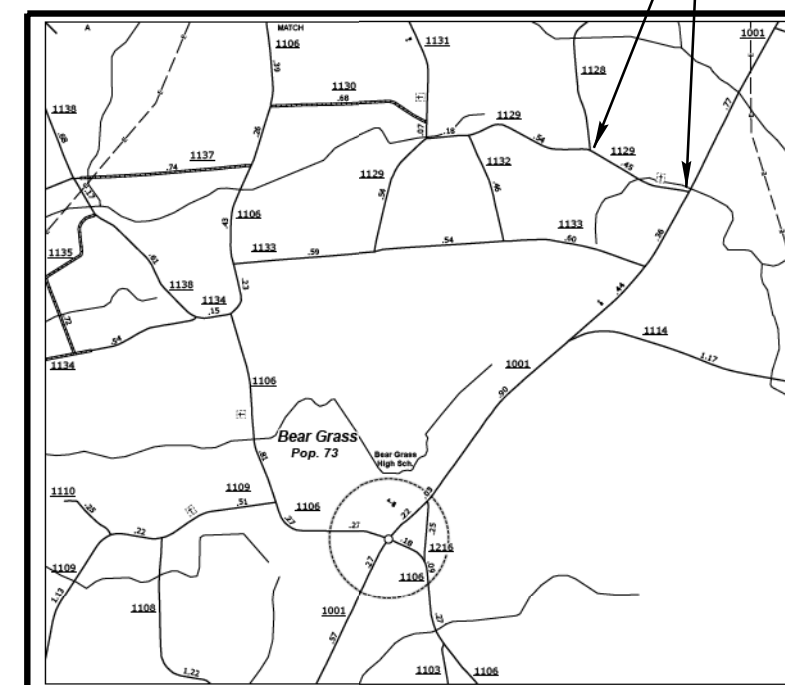
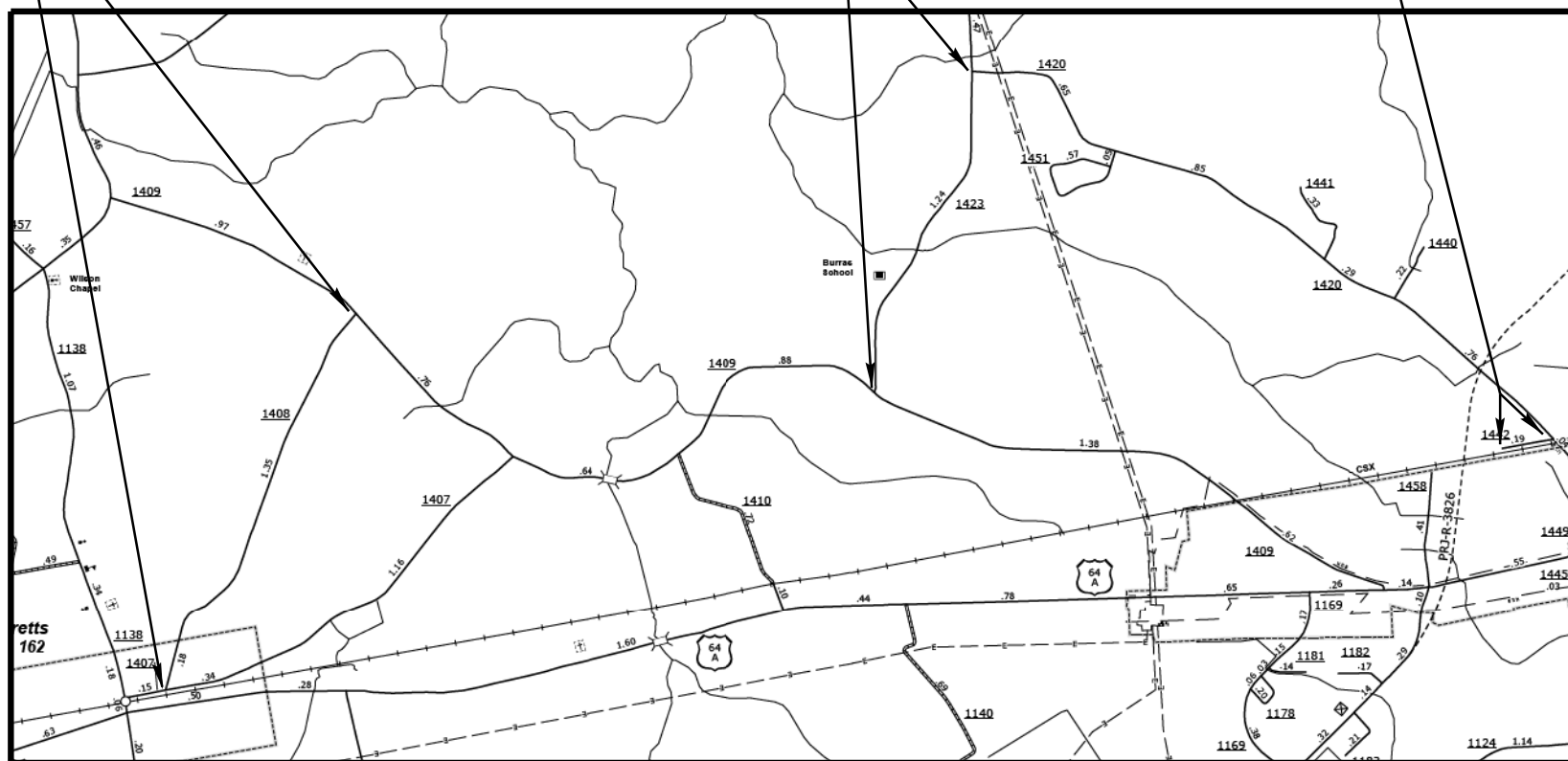
TYPE OF WORK: RESURFACING

SR 1408 MAP # 4

SR 1423 MAP # 5

SR 1442 MAP # 7

SR 1129 MAP # 6



STATE	STATE PROJECT REFERENCE NO.	SHEET NO.	TOTAL SHEETS
N.C.	2016CPT.01.16.20211.1 ETC.	3	
STATE PROJ. NO.	F.A. PROJ. NO.	DESCRIPTION	

NOT TO SCALE

PROJECT LENGTH

LENGTH OF ROADWAY PROJECT MAP# 4 = 1.60 MILES
 LENGTH OF ROADWAY PROJECT MAP# 5 = 1.25 MILES
 LENGTH OF ROADWAY PROJECT MAP# 6 = 0.45 MILES
 LENGTH OF ROADWAY PROJECT MAP# 7 = 0.20 MILES

Prepared in the Office of:
DIVISION OF HIGHWAYS

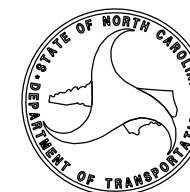
2012 STANDARD SPECIFICATIONS

LETTING DATE:

W.B. HOBBS, P.E.
DIVISION PROJECT MANAGER

C.E. SLACHTA
DIVISION PROPOSALS ENGINEER

DIVISION OF HIGHWAYS
STATE OF NORTH CAROLINA



09-DEC-2015 14:46
 C:\D\CURRENT\PROJECTS\DIVISION PROJECT WORKING FILES\District Three\DA00277 Chowan & Martin Co. Resurfacing (2015 -2016)\Pre-Bid Documents\Individual Files\2016CPT.01.16.20211.1.Rdy_atn_resurf_09/08/99
 cslachta AT DICAD28235L

CONTRACT NO. : DA00277 WBS ELEMENT : 2016CPT.01.16.20211.1 ETC.



STATE OF NORTH CAROLINA
 DIVISION OF HIGHWAYS

MARTIN COUNTY

STATE	STATE PROJECT REFERENCE NO.	SHEET NO.	TOTAL SHEETS
N.C.	2016CPT.01.16.20211.1, ETC.	4	
STATE PROJ. NO.	F.A. PROJ. NO.	DESCRIPTION	

LOCATION: MAP #8 SR 1118 (FROM US 17 TO SR 1119) / MAP #9 SR 1200 (FROM NC 125 TO SR 1201)
MAP #10 SR 1201 (FROM SR 1200 TO DEAD END) / MAP #11 SR 1593 (FROM SR 1581 TO DEAD END)

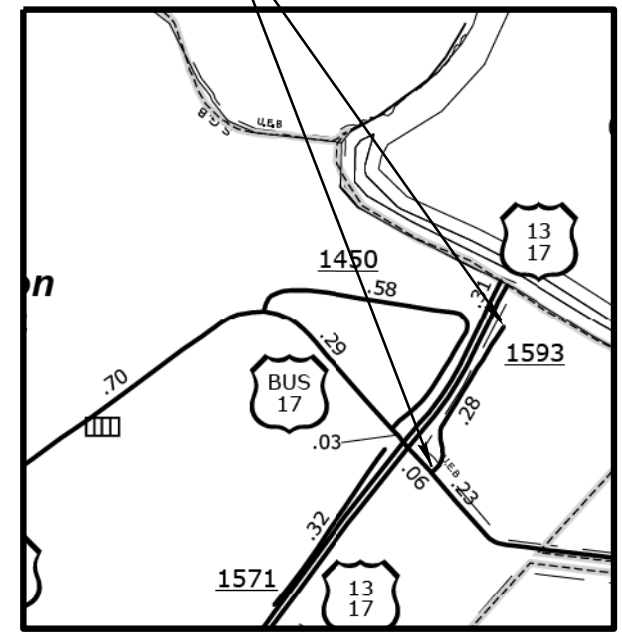
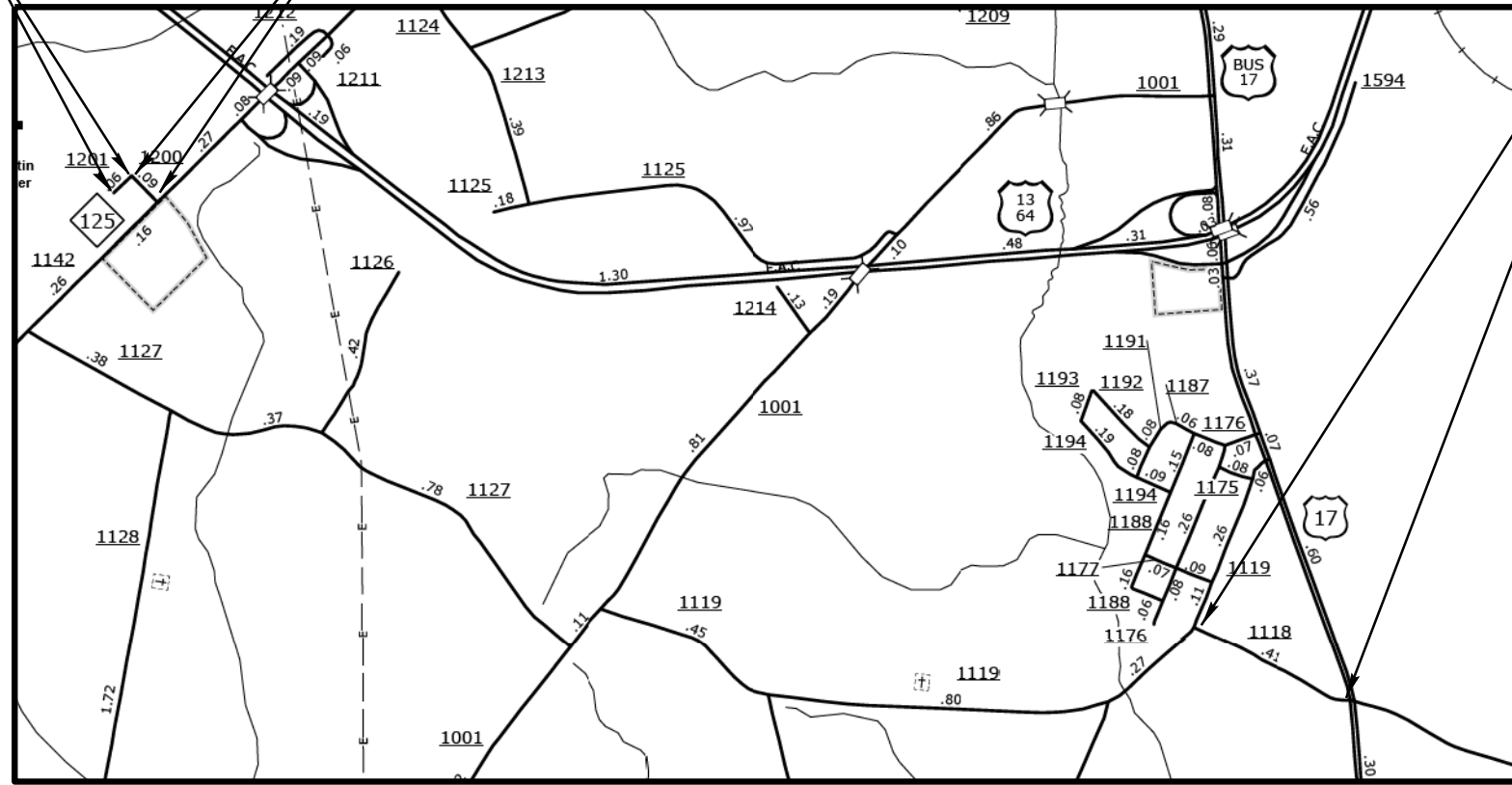
TYPE OF WORK: RESURFACING

SR 1201 MAP # 10

SR 1200 MAP # 9

SR 1118 MAP # 8

SR 1593 MAP # 11



NOT TO SCALE

PROJECT LENGTH
LENGTH OF ROADWAY PROJECT MAP# 8 = 0.37 MILES
LENGTH OF ROADWAY PROJECT MAP# 9 = 0.09 MILES
LENGTH OF ROADWAY PROJECT MAP# 10 = 0.06 MILES
LENGTH OF ROADWAY PROJECT MAP# 11 = 0.30 MILES

Prepared in the Office of:
DIVISION OF HIGHWAYS

2012 STANDARD SPECIFICATIONS

LETTING DATE: _____

W.B. HOBBS, P.E.
DIVISION PROJECT MANAGER

C.E. SLACHTA
DIVISION PROPOSALS ENGINEER

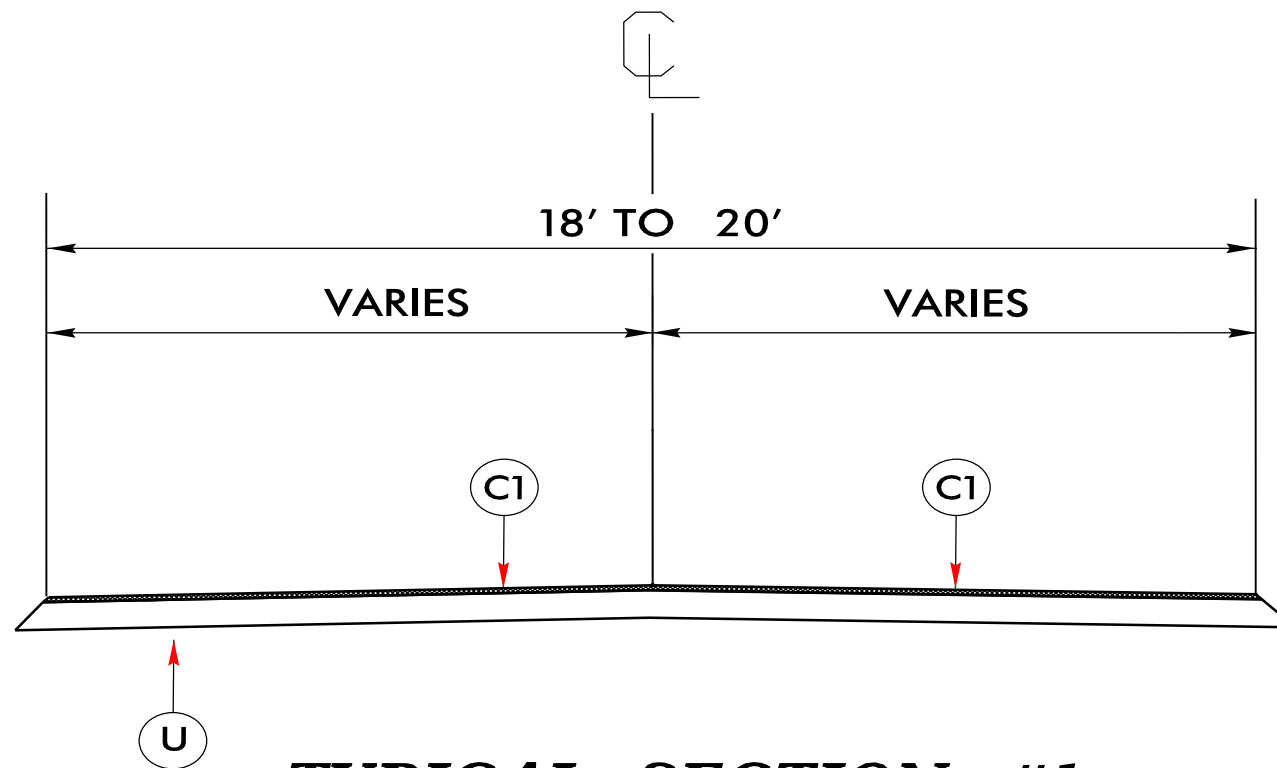
DIVISION OF HIGHWAYS
 STATE OF NORTH CAROLINA

NOTES:

1. ALL PAVED S.R. ROADS TO BE RESURFACED TO THE ENDS OF THE RADII OR AS DIRECTED BY THE ENGINEER
2. EDGES, PAVEMENT WIDENING, INTERSECTIONS, AND BRIDGE FLARES ARE INCLUDED IN THE TABLE OF QUANTITIES
3. SHOULDER AND DITCHES ARE TO BE CONSTRUCTED BY OTHER
4. PAVEMENT MARKING TO BE APPLIED BY OTHERS

PROJECT REFERENCE NO.	SHEET NO.
2016CPT.01.16.20211.1 ETC.	5

PAVEMENT SCHEDULE	
C1	PROP. APPROX. 1.5" ASPHALT CONCRETE SURFACE COURSE TYPE SF9.5A, AT AN AVERAGE RATE OF 165 LBS. PER SQ.YD.
U	EXISTING PAVEMENT.



TYPICAL SECTION #1

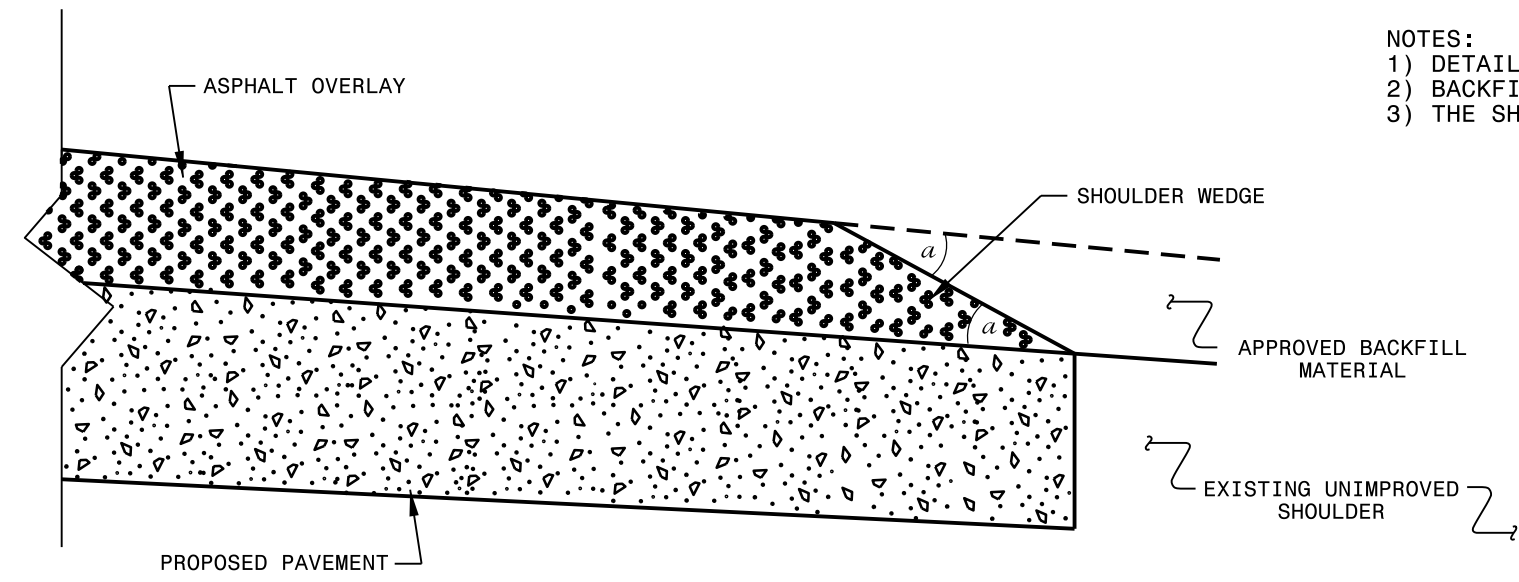
USE WITH MAP 1 - 11

PROJECT NO.	NO.	TOTAL NO.
2016CPT.01.16.20211.1, ETC.	6	

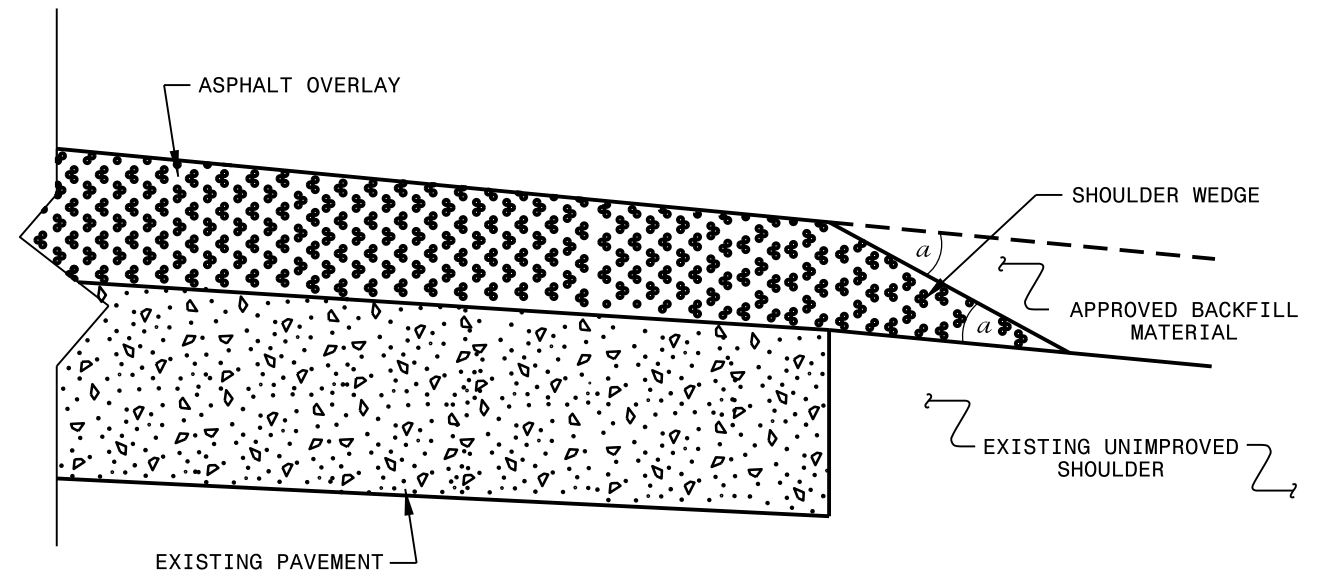
SUMMARY OF QUANTITIES

PROJECT NO	COUNTY	MAP NO	ROUTE	DESCRIPTION	TYP NO	LANE	LANE TPYE	FINAL SURFACE TEST REQUIRED	WARM MIX ASPHALT REQUIRED	LENGTH MI	WIDTH FT	MOBILIZATION LUMP SUM	SURFACE COURSE SF 9.5 A TONS	ASPHALT BINDER FOR PLANT MIX TONS	TEMPORARY TRAFFIC CONTROL LUMP SUM
2016CPT.01.16.20211.1	Chowan	1	SR 1224	FROM NC 32 TO TO SR 1222	1	2	2WU	NO	NO	2.2	18	1	2,123	142	1
2016CPT.01.16.20211.1	Chowan	2	SR 1206	FROM SR 1207 TO SR 1200	1	2	2WU	NO	NO	1.4	18	*	1,351	91	*
2016CPT.01.16.20581.1	Martin	3	SR 1549	FROM SR 1510 TO SR 1548	1	2	2WU	NO	NO	2.4	20	*	2,571	172	*
2016CPT.01.16.20581.1	Martin	4	SR 1408	FROM SR 1407 TO SR 1409	1	2	2WU	NO	NO	1.6	20	*	1,714	115	*
2016CPT.01.16.20581.1	Martin	5	SR 1423	FROM SR 1409 TO SR 1420	1	2	2WU	NO	NO	1.25	20	*	1,339	90	*
2016CPT.01.16.20581.1	Martin	6	SR 1129	FROM SR 1001 TO SR 1128	1	2	2WU	NO	NO	0.45	20	*	482	32	*
2016CPT.01.16.20581.1	Martin	7	SR 1442	FROM SR 1420 TO DEAD END	1	2	2WU	NO	NO	0.2	20	*	214	14	*
2016CPT.01.16.20581.1	Martin	8	SR 1118	FROM US 17 TO SR 1119	1	2	2WU	NO	NO	0.37	20	*	432	29	*
2016CPT.01.16.20581.1	Martin	9	SR 1200	FROM NC 125 TO SR 1201	1	2	2WU	NO	NO	0.09	20	*	96	6	*
2016CPT.01.16.20581.1	Martin	10	SR 1201	FROM SR 1200 TO DEAD END	1	2	2WU	NO	NO	0.06	20	*	64	4	*
2016CPT.01.16.20581.1	Martin	11	SR 1593	FROM SR 1581 TO DEAD END	1	2	2WU	NO	NO	0.3	20	*	321	22	*
GRAND TOTAL										10.32		1	10,707	717	1

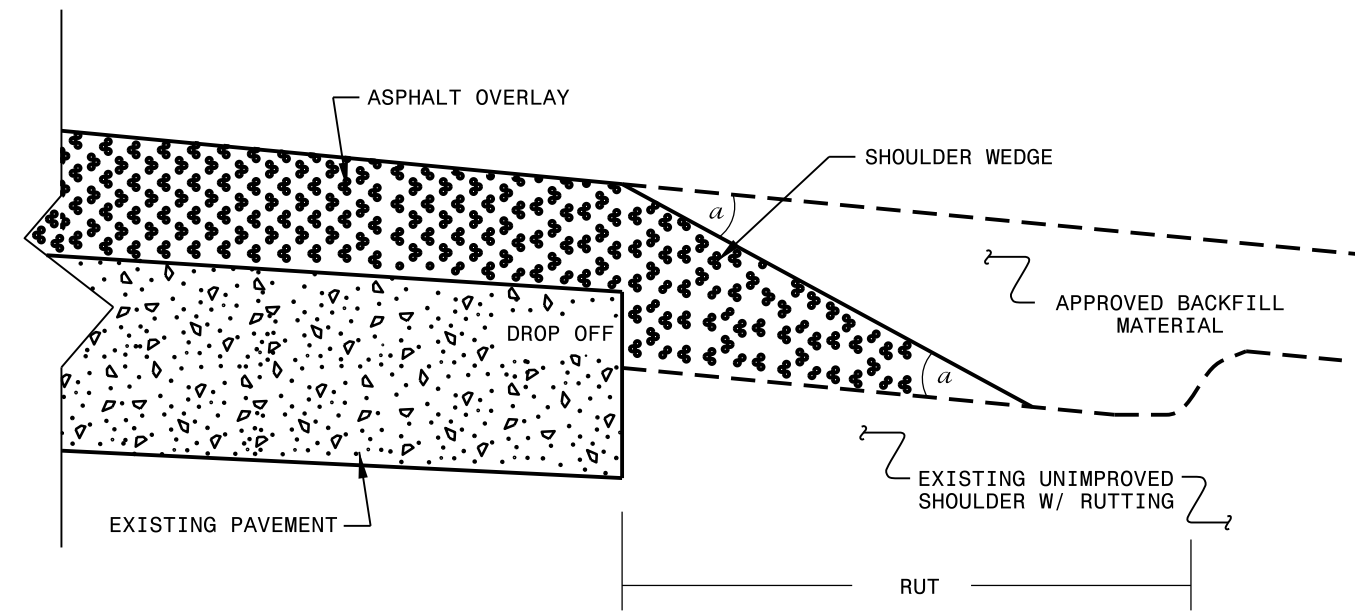
- NOTES:
- 1) DETAIL DOES NOT APPLY TO OGAFB AND ULTRA-THIN BONDED WEARING COURSE.
 - 2) BACKFILL SHOULDER WITH APPROVED MATERIAL.
 - 3) THE SHOULDER WEDGE DEVICE MAY BE DISENGAGED AT PAVED DRIVEWAYS AND SIDE STREETS.



SHOULDER WEDGE DETAIL
 (Resurfacing Projects w/ Widening or
 with Existing Paved Shoulder having no dropoffs)



SHOULDER WEDGE DETAIL
 (Resurfacing Projects w/ NO Widening)



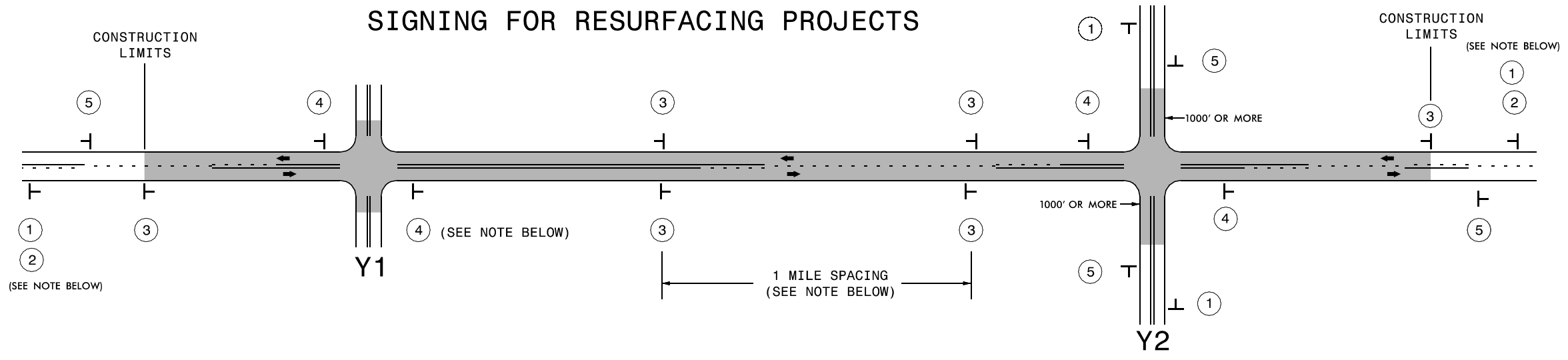
SHOULDER WEDGE DETAIL
 (Resurfacing Adjacent to
 Rutted Shoulder)

- SHOULDER WEDGE ANGLE = 30°

CONTRACT STANDARDS AND DEVELOPMENT UNIT			
Office 919-707-6950		FAX 919-250-4119	
SHOULDER WEDGE DETAILS			
ORIGINAL BY: T.SPELL	DATE: 7-19-11		
MODIFIED BY:	DATE: 10/16/12		
CHECKED BY:	DATE:		
FILE SPEC.: susr/details/stand/shoulderwedgedetail.dgn			

SYSTEM: 11/11/11
 USER: T.SPELL
 FILE: susr/details/stand/shoulderwedgedetail.dgn

SIGNING FOR RESURFACING PROJECTS



LEGEND	
┃	STATIONARY SIGN
←	DIRECTION OF TRAFFIC FLOW

MAINLINE (-L-) SIGNING

-Y- LINE SIGNING

SIGNING NOTES AND PLACEMENT PER DIRECTION	MAINLINE (-L-) SIGNING		-Y- LINE SIGNING	
	①	 <small>W20-1 48" X 48"</small>	<p>PLACE 1000' PRIOR TO BEGINNING OF CONSTRUCTION LIMITS. ONLY USED ON -Y- LINES IF RESURFACING LIMITS EXTEND 1000' ALONG -Y- LINE.</p>	<p>NO REQUIRED STATIONARY SIGNING FOR THE FOLLOWING -Y- LINE CONDITIONS:</p> <ol style="list-style-type: none"> 1) LESS THAN 1000' OF RESURFACING ALONG -Y- LINE 2) SUBDIVISION ROADS 3) DEAD END ROADS <p>WHEN PAVING/CONSTRUCTION ACTIVITIES PROCEED ACROSS AN UNSIGNED -Y- LINE, ADVANCE WARNING PORTABLE SIGNS SHALL BE USED ALONG THE -Y- LINE AS SHOWN BELOW. REMOVE UPON COMPLETION OF WORK.</p> <div style="display: flex; justify-content: space-around;"> <div style="text-align: center;"> <small>W20-1 48" X 48"</small> </div> <div style="text-align: center;"> <small>W20-7 A 48" X 48"</small> </div> </div> <p>PLACED 500' IN ADVANCE OF FLAGGER. PLACED 250' IN ADVANCE OF FLAGGER.</p>
	②	 <small>W7-3aP 24" X 18"</small>	<p>#2 SIGN ONLY USED WHEN RESURFACING LIMITS ARE 2 OR MORE MILES IN LENGTH. ROUND UP TO NEXT WHOLE NUMBER. (NO FRACTIONAL OR DECIMAL NUMBERS)</p>	
	③	 <small>SP 13107 48" X 48"</small>	<p>PLACE INITIALLY AT THE CONSTRUCTION LIMITS AND SPACED 1 MILE APART THEREAFTER. IF NO -Y- LINES EXIST, PLACE 2ND SET 1/2 MILE FROM THE CONSTRUCTION LIMITS AND THEN SPACE 1 MILE THEREAFTER.</p>	
	④	 <small>SP 13106 48" X 48"</small>	<p>THESE ARE FOR -Y- LINES THAT ARE "THROUGH" ROADWAYS. DEAD END AND SUBDIVISION ROADS ARE NOT "THROUGH" ROADWAYS. INSTALL 500' +/- FROM EACH -Y- LINE APPROACH AS SHOWN ABOVE. FOR MULTIPLE -Y- LINES THAT ARE SEPARATED BY 0.25 MILES OR LESS, TREAT AS A SINGLE UNIT AND INSTALL WITHIN 500' OF EACH APPROACH. A MAXIMUM OF 2 SIGN SETS PER MILE. DO NOT INSTALL WHEN -Y- LINES ARE WITHIN 0.5 MILES FROM "END ROAD WORK" SIGN.</p>	
⑤	 <small>G20-2 A 48" X 24"</small>	<p>PLACE 500' FOLLOWING THE END OF CONSTRUCTION LIMITS.</p>		

8/8/2013 8:51:10 AM S:\T\U\WZTC\Resurfacing\2013\Documents\New_Pr ocedures_05_09_2013\Resurfacing_AdvWarn_2Ln.dgn User:frmgarratt

DIVISION OF HIGHWAYS
STATE OF NORTH CAROLINA
DEPARTMENT OF TRANSPORTATION
WORK ZONE TRAFFIC CONTROL

**RESURFACING
ADVANCE WARNING SIGNS
FOR
RURAL AND SUBURBAN
2 LANE ROADWAYS**