

10/03/13

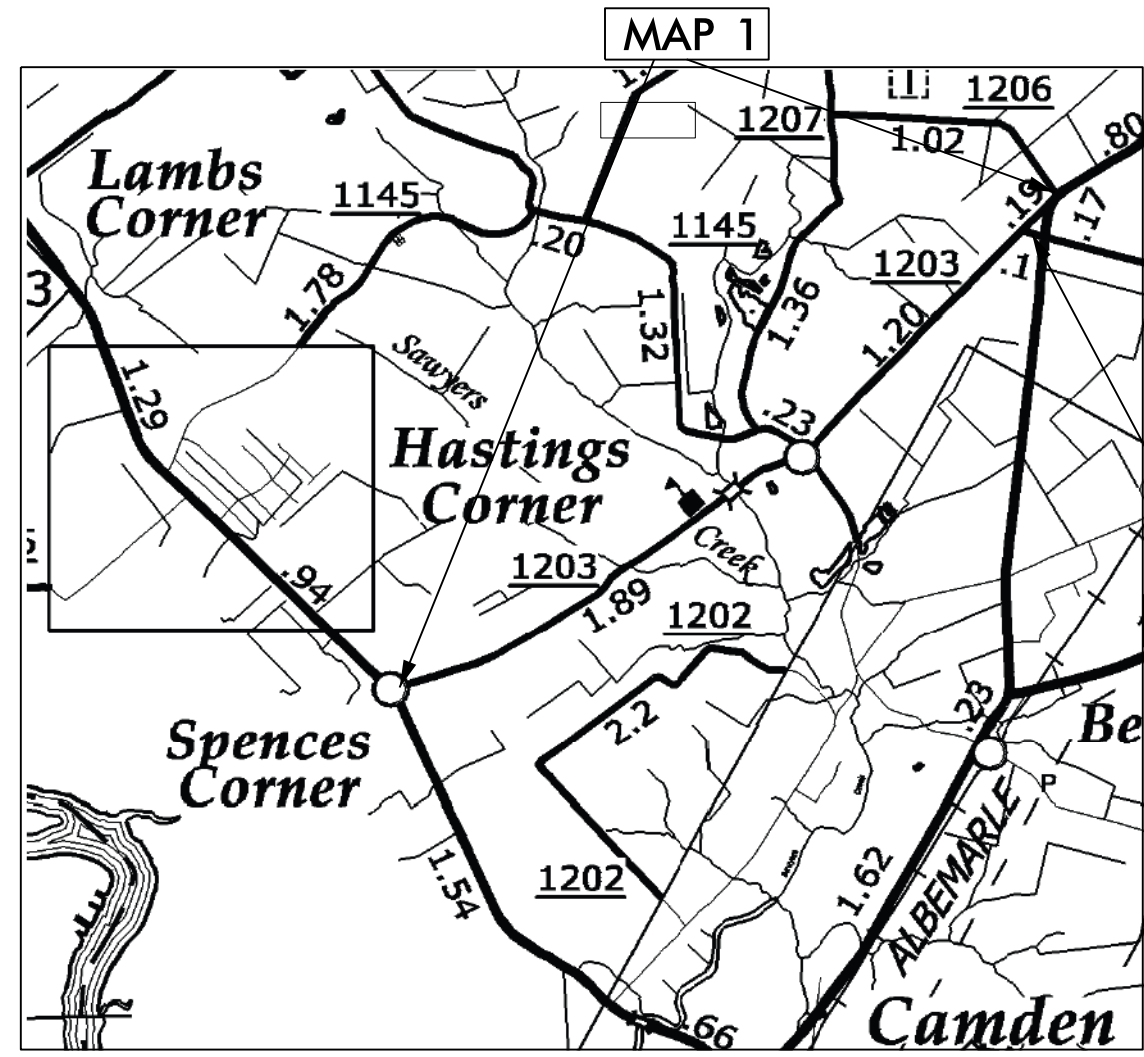
CONTRACT NO.: DA00306 WBS ELEMENT: 2017CPT.01.07.20151.1, ETC

STATE OF NORTH CAROLINA
DIVISION OF HIGHWAYS

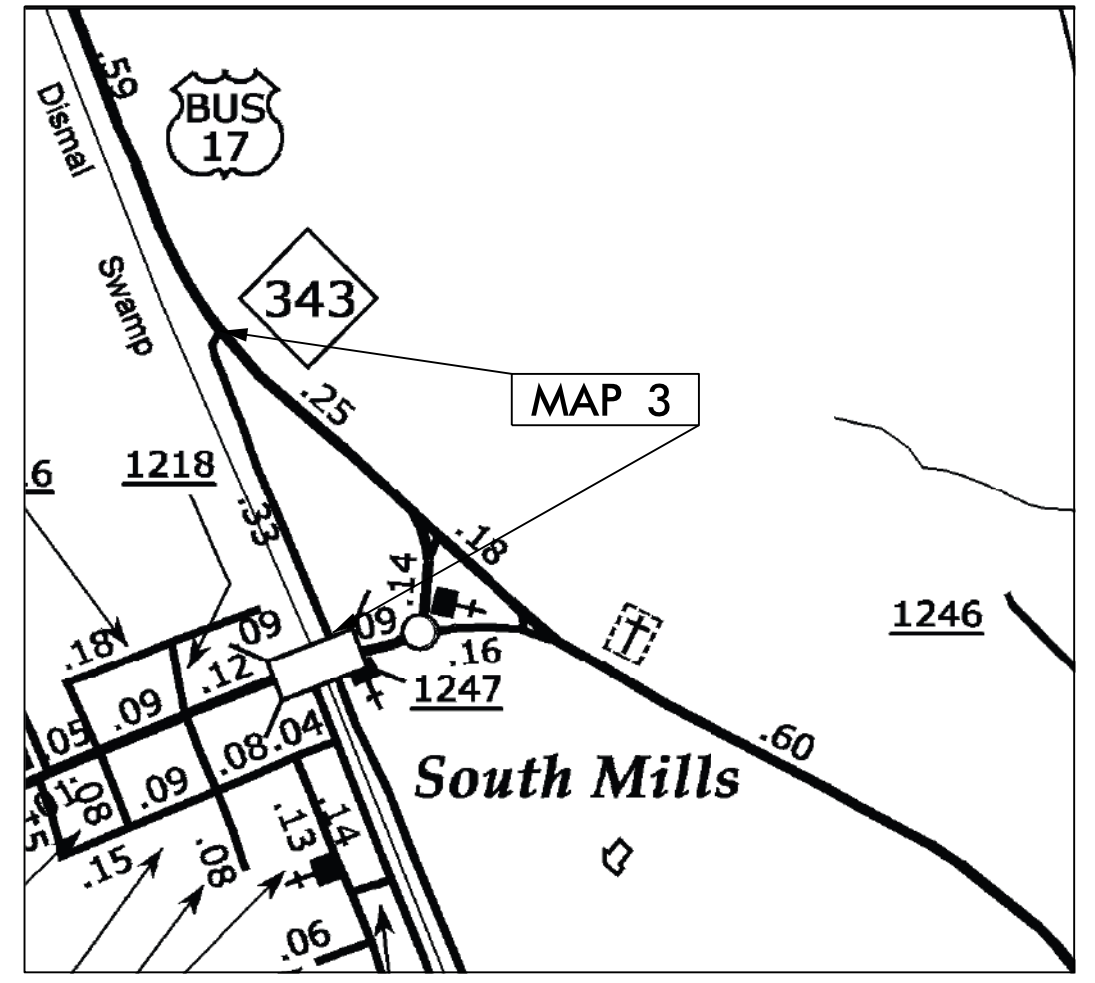
CAMDEN COUNTY

STATE	STATE PROJECT REFERENCE NO.	SHEET NO.	TOTAL SHEETS
N.C.	2017CPT.01.07.20151.1, ETC	1	
STATE PROJ. NO.	F.A. PROJ. NO.	DESCRIPTION	
2017CPT.01.07.20151.1		MAP 1	
2017CPT.01.07.20151.1		MAP 2	
2017CPT.01.07.20151.2		MAP 3	

LOCATION: MAP 1 SR 1203 SCOTLAND RD. FROM NC 343 TO NC 34
 MAP 2 SR 1204 WHITEHURST LANE FROM SR 1203 TO NC 34
 MAP 3 SR 1243 MULLEN RD. FROM US 17 BUS. TO US 17 BUS.
 TYPE OF WORK: RESURFACING



MAP 2



MAP 3

NTS

PROJECT LENGTH	
LENGTH OF ROADWAY PROJECT MAP 1 =	3.18 MI.
LENGTH OF ROADWAY PROJECT MAP 2 =	0.10 MI.
LENGTH OF ROADWAY PROJECT MAP 3 =	0.29 MI.

Prepared in the Office of:
DIVISION OF HIGHWAYS
 113 Airport Dr., Edenton NC, 27932

2012 STANDARD SPECIFICATIONS

LETTING DATE:

W.B. HOBBS, P.E.
 DIVISION PROJECT MANAGER

C.E. SLACHTA
 DIVISION PROPOSALS ENGINEER

DIVISION OF HIGHWAYS
 STATE OF NORTH CAROLINA

DRAWN BY: BJT

CONTRACT NO.: DA00306 WBS ELEMENT: 2017CPT.01.07.20271.1, ETC.

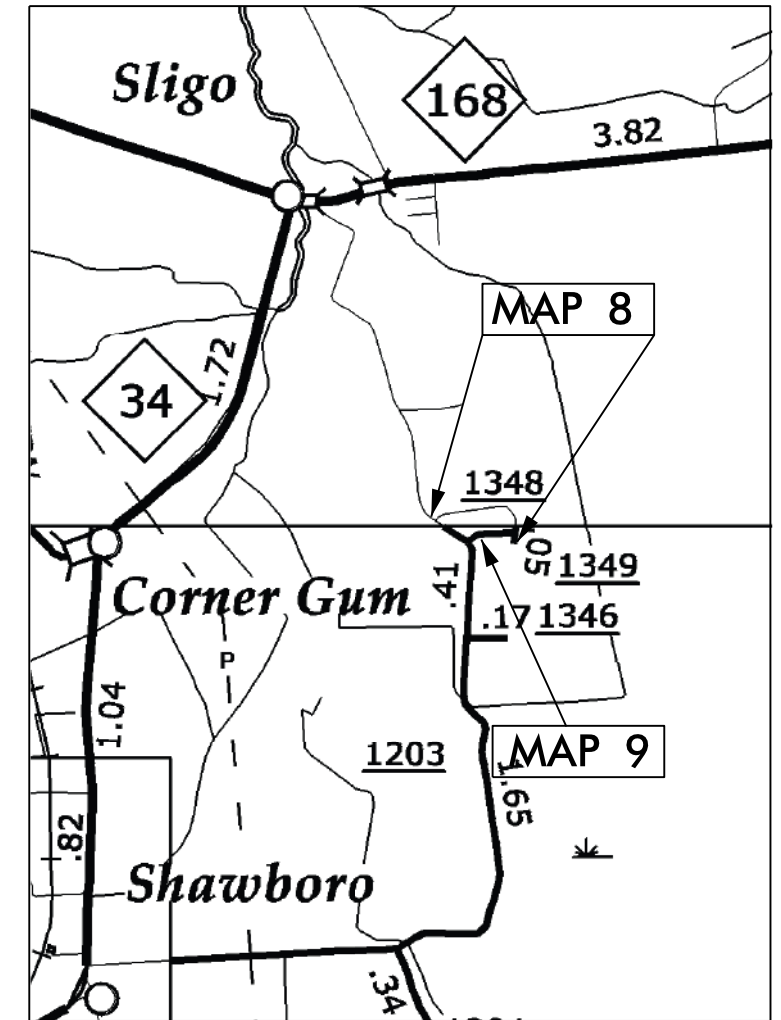
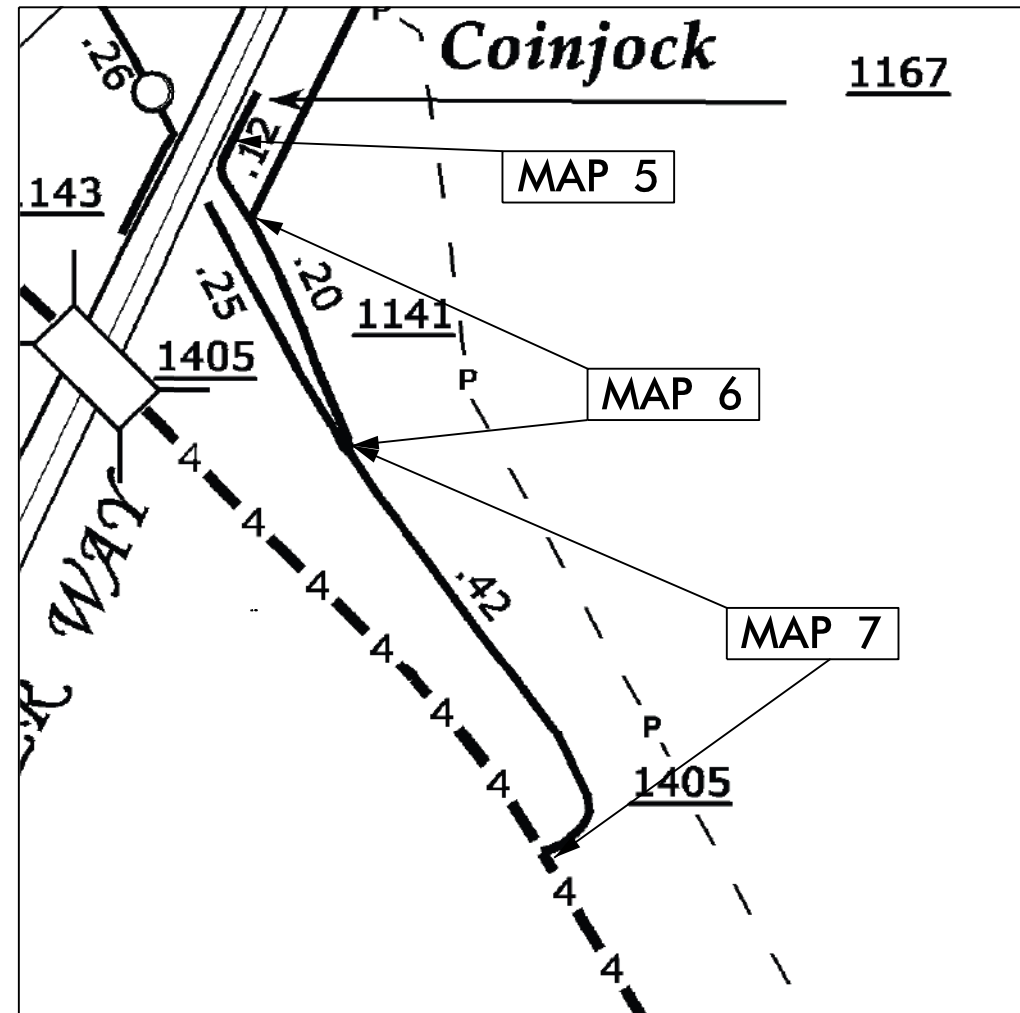
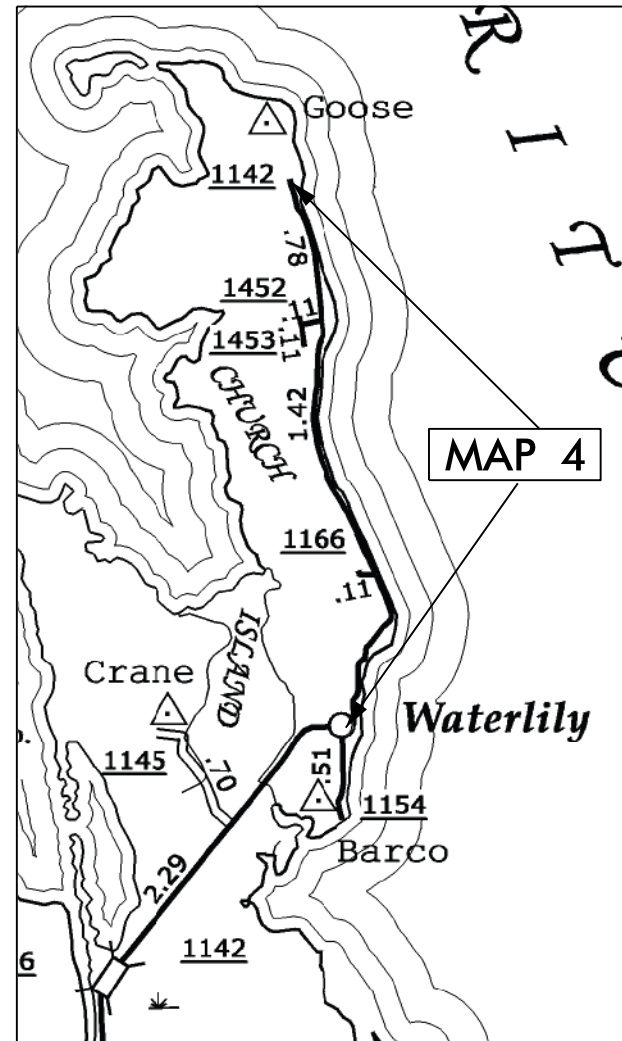
STATE OF NORTH CAROLINA
DIVISION OF HIGHWAYS

CURRITUCK COUNTY

STATE	STATE PROJECT REFERENCE NO.	SHEET NO.
N.C.	2017CPT.01.07.20271.1, ETC.	2
STATE PROJ. NO.	F.A. PROJ. NO.	DESCRIPTION
2017CPT.01.07.20271.1		MAP 4
2017CPT.01.07.20271.1		MAP 5
2017CPT.01.07.20271.1		MAP 6
2017CPT.01.07.20271.1		MAP 7
2017CPT.01.07.20271.2		MAP 8
2017CPT.01.07.20271.2		MAP 9

LOCATION: MAP 4 SR 1142 WATERLILLY RD FROM SR 1154 TO END OF MAINTENANCE
 MAP 5 SR 1167 OLD COINJOCK CANAL RD FROM SR 1141 TO END OF MAINTENANCE
 MAP 6 SR 1141 N. OLD US 158 FROM SR 1405 TO SR 1167
 MAP 7 SR 1405 WATERLILLY RD FROM US 158 TO SR 1141
 MAP 8 SR 1348 N. MARSHALL RD FROM SR 1203 TO CUL-DE-SAC
 MAP 9 SR 1349 S. MARSHALL RD FROM SR 1203 TO SR 1348

TYPE OF WORK: RESURFACING



NTS

PROJECT LENGTH

LENGTH OF ROADWAY PROJECT	MAP 4 =	3.10 MI.
LENGTH OF ROADWAY PROJECT	MAP 5 =	0.08 MI.
LENGTH OF ROADWAY PROJECT	MAP 6 =	0.20 MI.
LENGTH OF ROADWAY PROJECT	MAP 7 =	0.51 MI.
LENGTH OF ROADWAY PROJECT	MAP 8 =	0.47 MI.
LENGTH OF ROADWAY PROJECT	MAP 9 =	0.20 MI.

Prepared in the Office of:
DIVISION OF HIGHWAYS

113 Airport Dr., Edenton NC, 27932

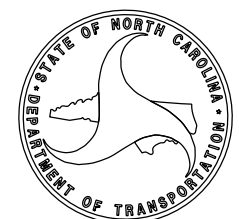
2012 STANDARD SPECIFICATIONS

LETTING DATE:

W.B. HOBBS, P.E.
DIVISION PROJECT MANAGER

C.E. SLACHTA
DIVISION PROPOSALS ENGINEER

DIVISION OF HIGHWAYS
STATE OF NORTH CAROLINA



10/03/13

CONTRACT NO.: DA00306 WBS ELEMENT: 2017CPT.01.07.20271.1, ETC.

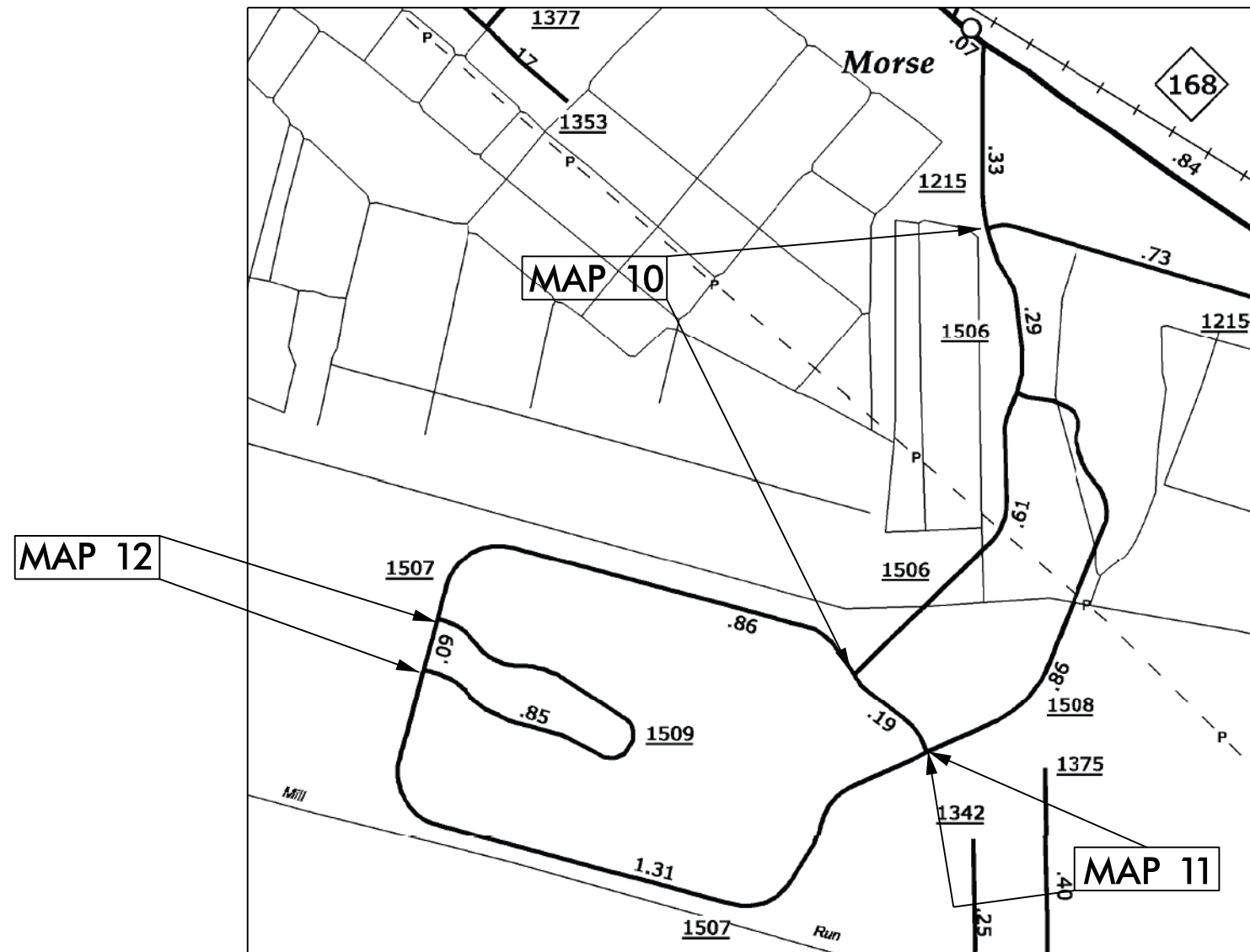
STATE OF NORTH CAROLINA
DIVISION OF HIGHWAYS

CURRITUCK COUNTY

STATE	STATE PROJECT REFERENCE NO.	SHEET NO.
N.C.	2017CPT.01.07.20271.1, ETC.	3
STATE PROJ. NO.	F.A. PROJ. NO.	DESCRIPTION
2017CPT.01.07.20272.1		MAP 10
2017CPT.01.07.20272.2		MAP 11
2017CPT.01.07.20272.3		MAP 12

LOCATION: MAP 10 SR 1506 EAGLE CREEK RD FROM SR 1215 TO SR 1507
 MAP 11 SR 1507 GREEN VIEW RD FROM SR 1508 TO SR 1508
 MAP 12 SR 1509 EAGLETON CIRCLE FROM SR 1507 TO SR 1507

TYPE OF WORK: RESURFACING



NTS

PROJECT LENGTH

LENGTH OF ROADWAY PROJECT	MAP 10 =	0.90 MI.
LENGTH OF ROADWAY PROJECT	MAP 11 =	2.50 MI.
LENGTH OF ROADWAY PROJECT	MAP 12 =	0.80 MI.

Prepared in the Office of:
DIVISION OF HIGHWAYS

113 Airport Dr., Edenton NC, 27932

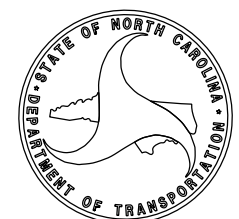
2012 STANDARD SPECIFICATIONS

LETTING DATE:

W.B. HOBBS, P.E.
DIVISION PROJECT MANAGER

C.E. SLACHTA
DIVISION PROPOSALS ENGINEER

DIVISION OF HIGHWAYS
STATE OF NORTH CAROLINA



DRAWN BY: BJT

10/03/13

CONTRACT NO.: DA00306 WBS ELEMENT: 2017CPT.01.07.20701.1, ETC.

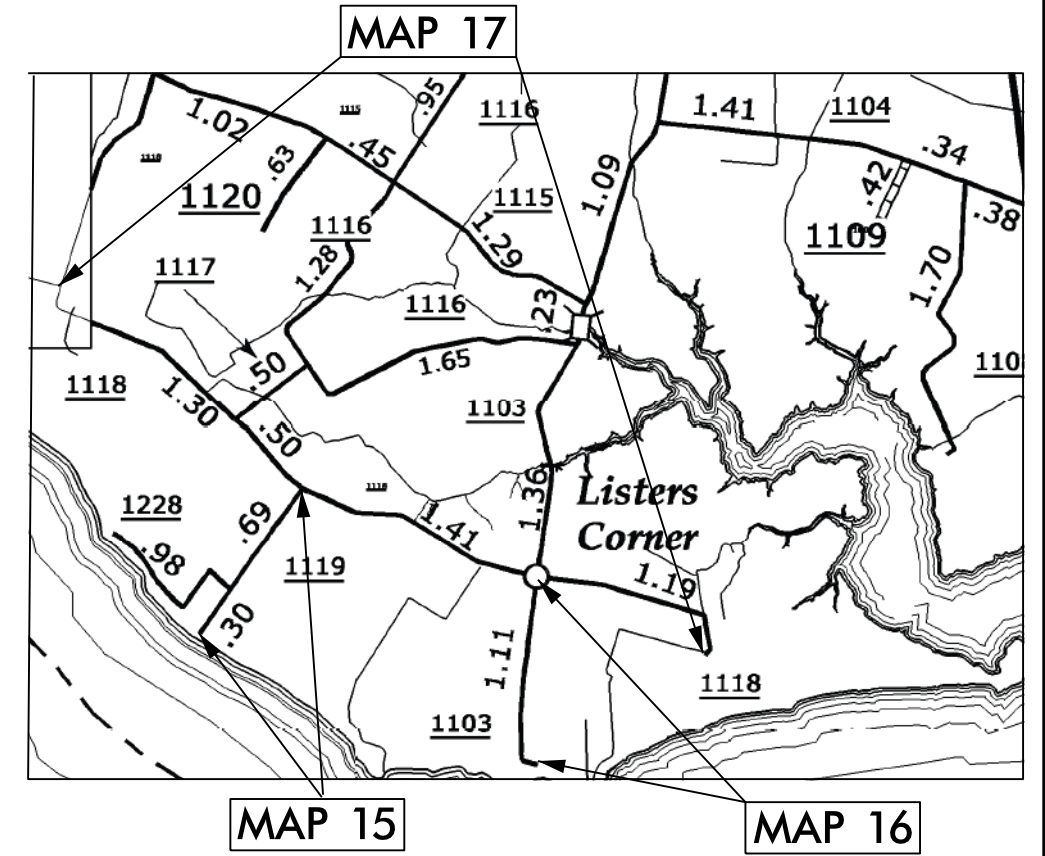
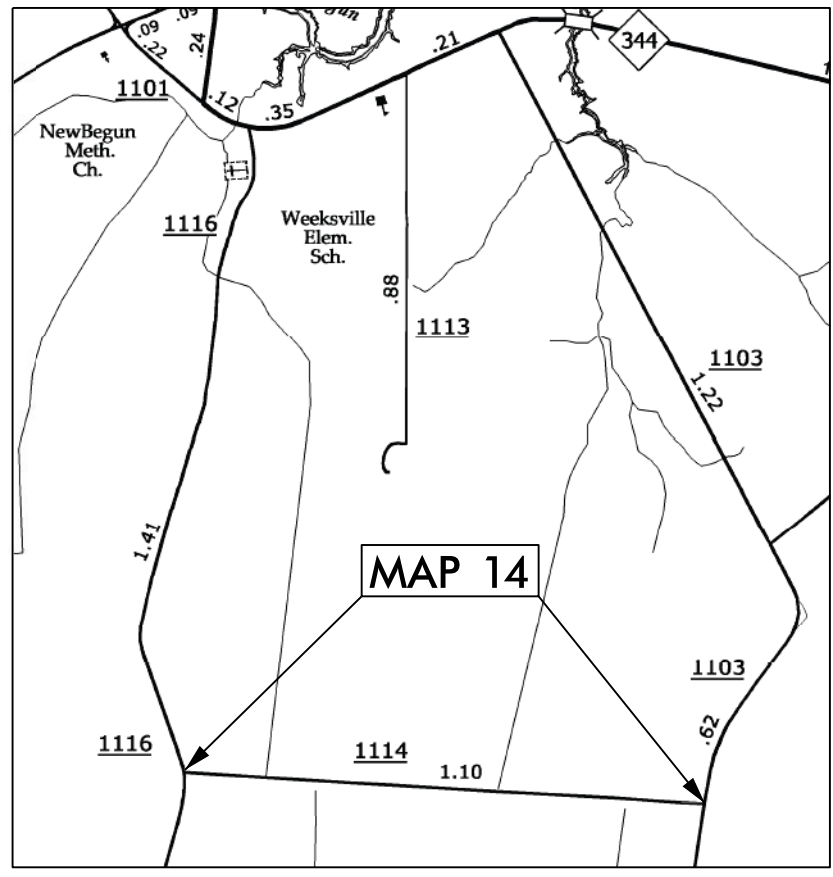
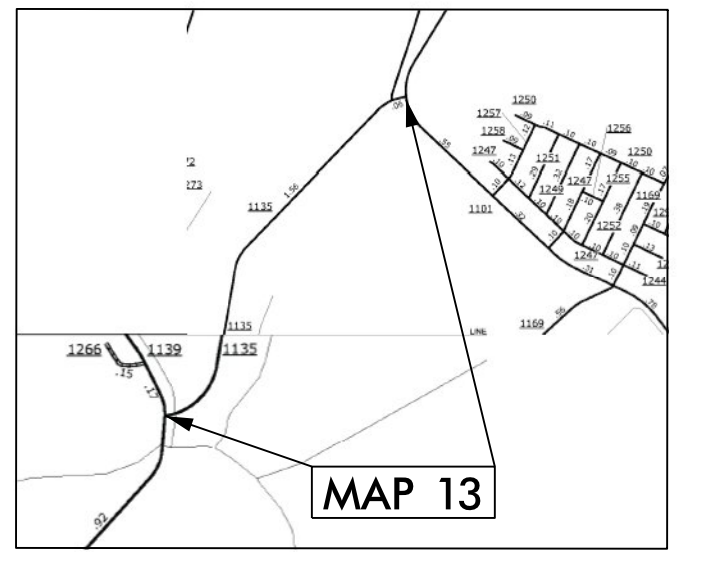
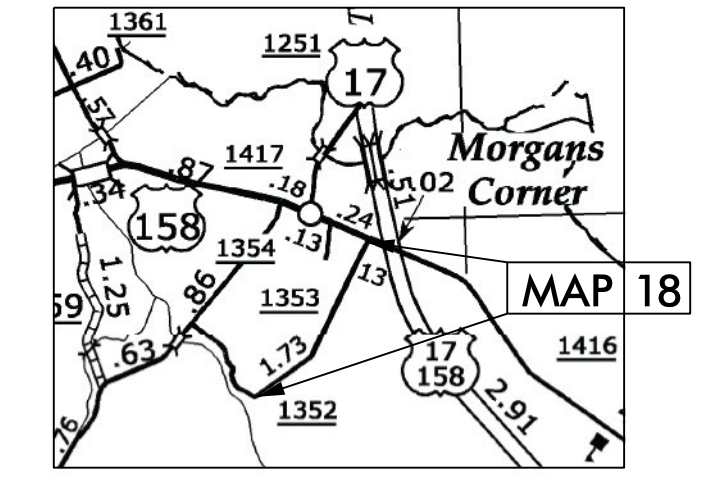
STATE OF NORTH CAROLINA
DIVISION OF HIGHWAYS

PASQUOTANK COUNTY

STATE	STATE PROJECT REFERENCE NO.	SHEET NO.
N.C.	2017CPT.01.07.20701.1, ETC	4
STATE PROJ. NO.	F.A. PROJ. NO.	DESCRIPTION
2017CPT.01.07.20701.1		MAP 13
2017CPT.01.07.20701.2		MAP 14
2017CPT.01.07.20701.3		MAP 15
2017CPT.01.07.20701.4		MAP 16
2017CPT.01.07.20701.5		MAP 17
36249.3694		MAP 18

LOCATION: MAP 13 SR 1135 BLOUNT RD FROM SR 1101 TO SR 1139
 MAP 14 SR 1114 RAMSEY RD FROM SR 1103 TO SR 1116
 MAP 15 SR 1119 HOBBS LANDING RD FROM SR 1118 TO END OF MAINTENANCE
 MAP 16 SR 1103 REBELLION POINT RD FROM SR 1118 TO END OF MAINTENANCE
 MAP 17 SR 1118 DRY RIDGE RD FROM SR 1200 TO END OF MAINTENANCE
 MAP 18 SR 1352 BROTHERS LANE FROM US 158 TO END OF PAVEMENT

TYPE OF WORK: RESURFACING



NTS

PROJECT LENGTH	
LENGTH OF ROADWAY PROJECT	MAP 13 = 1.56 MI.
LENGTH OF ROADWAY PROJECT	MAP 14 = 1.05 MI.
LENGTH OF ROADWAY PROJECT	MAP 15 = 0.99 MI.
LENGTH OF ROADWAY PROJECT	MAP 16 = 1.18 MI.
LENGTH OF ROADWAY PROJECT	MAP 17 = 4.39 MI.
LENGTH OF ROADWAY PROJECT	MAP 18 = 1.14 MI.

Prepared in the Office of:
DIVISION OF HIGHWAYS
 113 Airport Dr., Edenton NC, 27932

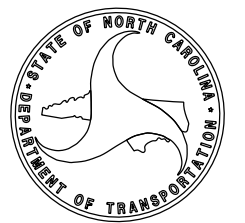
2012 STANDARD SPECIFICATIONS

LETTING DATE:

W.B. HOBBS, P.E.
 DIVISION PROJECT MANAGER

C.E. SLACHTA
 DIVISION PROPOSALS ENGINEER

DIVISION OF HIGHWAYS
 STATE OF NORTH CAROLINA



DRAWN BY: BJT

C O N T R A C T P A V E M E N T S C H E D U L E

C1	PROP. APPROX. 1½" ASPHALT CONCRETE SURFACE COURSE, TYPE SF9.5A, AT AN AVERAGE RATE OF 165 LBS. PER SQ. YD.
C2	PROP. APPROX. ¾" ASPHALT CONCRETE SURFACE COURSE, TYPE S4.75A, AT AN AVERAGE RATE OF 75 LBS. PER SQ. YD.
U	EXISTING PAVEMENT.

P A V E M E N T S C H E D U L E

C1	PROP. APPROX. 1½" ASPHALT CONCRETE SURFACE COURSE, TYPE SF9.5A, AT AN AVERAGE RATE OF 165 LBS. PER SQ. YD.
U	EXISTING PAVEMENT.

PROJECT REFERENCE NO.	SHEET NO.
2017CPT.01.07.20151.1, ETC	6

NOTES:

*ALL PAVED S.R. ROADS TO BE RESURFACED TO THE ENDS OF THE RADII, OR AS DIRECTED BY THE ENGINEER

*EDGES, PAVEMENT WIDENING, INTERSECTIONS, AND BRIDGE FLARES ARE INCLUDED IN THE TABLE OF QUANTITIES

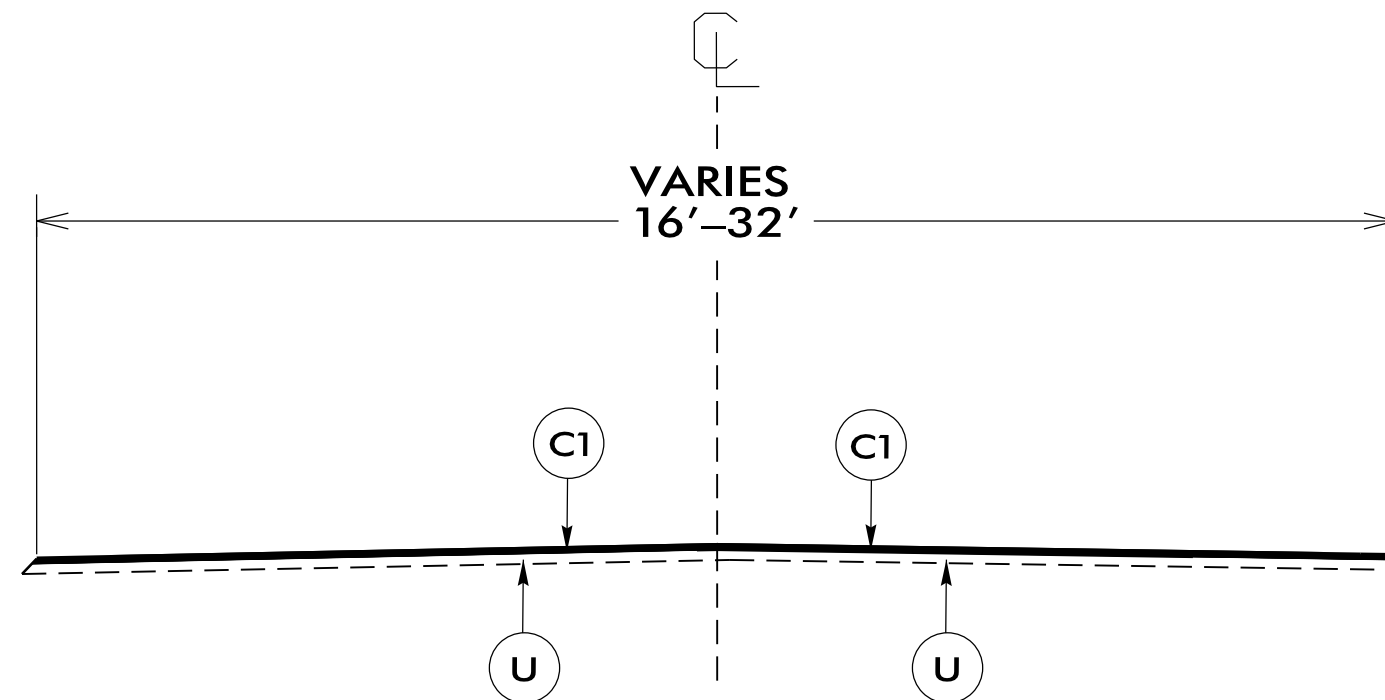
*PAVEMENT MARKINGS TO BE INSTALLED BY OTHERS

*SHOULDERS TO BE CONSTRUCTED BY OTHERS

NOTES:

*ASPHALT LEVELING AS DIRECTED BY ENGINEER

*ASPHALT PATCHING AS DIRECTED BY ENGINEER



TYPICAL SECTION NO. 1

USE WITH MAPS 1 - 9
& MAPS 13 - 18

NTS

P A V E M E N T S C H E D U L E

C2	PROP. APPROX. 3/4" ASPHALT CONCRETE SURFACE COURSE, TYPE S4.75A, AT AN AVERAGE RATE OF 75 LBS. PER SQ. YD.
U	EXISTING PAVEMENT.

PROJECT REFERENCE NO.	SHEET NO.
2017CPT.01.07.20151.1, ETC	7

NOTES:

*ALL PAVED S.R. ROADS TO BE RESURFACED TO THE ENDS OF THE RADII, OR AS DIRECTED BY THE ENGINEER

*EDGES, PAVEMENT WIDENING, INTERSECTIONS, AND BRIDGE FLARES ARE INCLUDED IN THE TABLE OF QUANTITIES

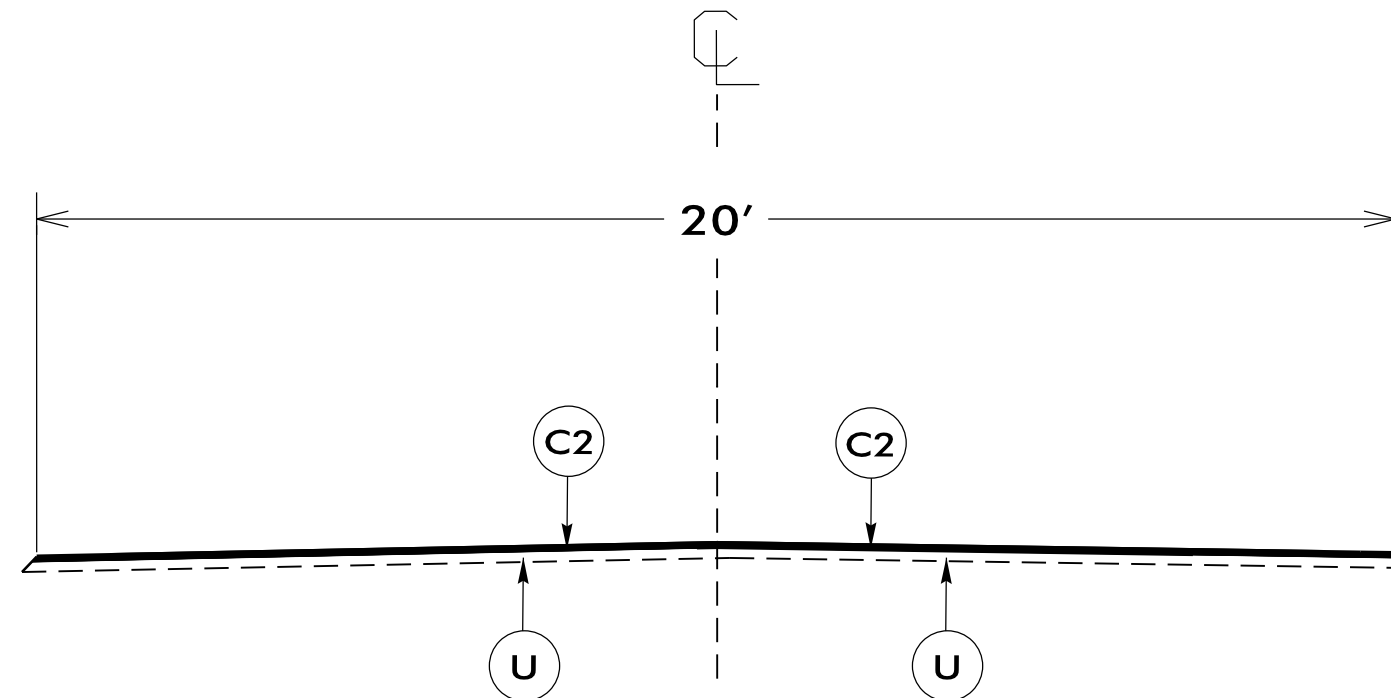
*PAVEMENT MARKINGS TO BE INSTALLED BY OTHERS

*SHOULDERS TO BE CONSTRUCTED BY OTHERS

NOTES:

*ASPHALT LEVELING AS DIRECTED BY ENGINEER

*ASPHALT PATCHING AS DIRECTED BY ENGINEER



TYPICAL SECTION NO. 2

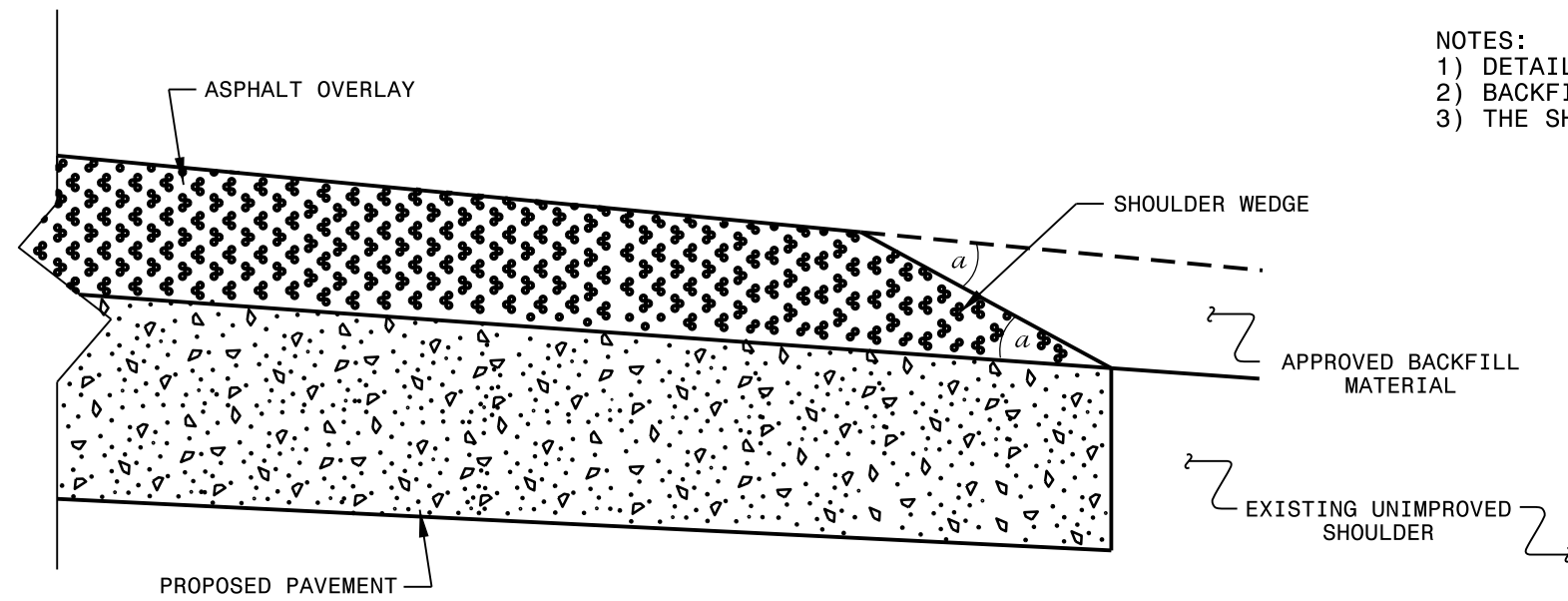
USE WITH MAPS 10 - 12

NTS

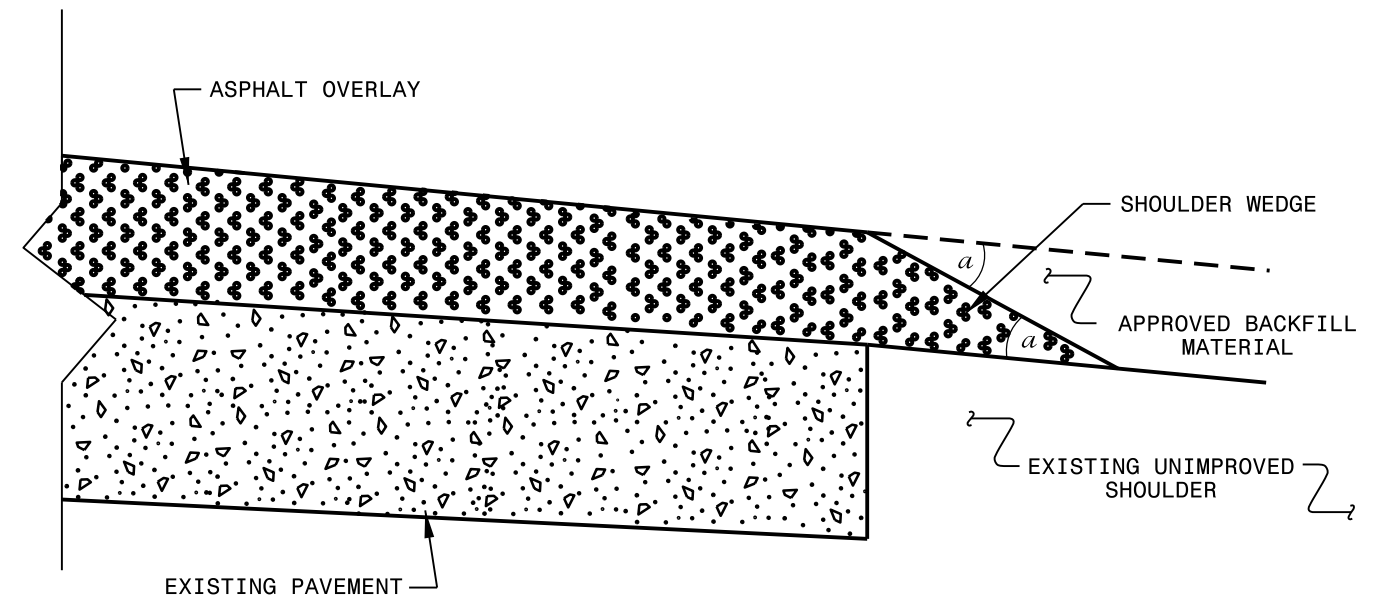
SUMMARY OF QUANTITIES

PROJECT NO	COUNTY	MAP NO	ROUTE	DESCRIPTION	TYP NO	LANES	LANE TYPE	FINAL SURFACE TESTING REQUIRED	WARM MIX ASPHALT REQUIRED	LENGTH MI	WIDTH FT	MOBILIZATION LS	INCIDENTAL STONE BASE TONS	INCIDENTAL MILLING SY	SURFACE COURSE, SF9.5A TONS	ASPHALT CONC SURFACE COURSE, TYPE SF9.5A (LEVELING COURSE) TON	SURFACE COURSE, S4.75A TONS	ASPHALT BINDER FOR PLANT MIX TONS	PATCHING EXISTING PAVEMENT TONS	CONCRETE CURB RAMPS EA	WORK ZONE ADVANCE / GENERAL SIGNING SF	TEMPORARY TRAFFIC CONTROL LS
2017CPT.01.07.20151.1	Camden	1	SR 1203 SCOTLAND ROAD	FROM NC 343 TO NC 34	1	2	2WU	NO	NO	3.18	20.5	1	60	150	3,492			234			96	1
2017CPT.01.07.20151.1	Camden	2	SR 1204 WHITEHURST LANE	FROM SR 1203 TO NC 34	1	2	2WU	NO	NO	0.1	19	*			102			7			16	*
2017CPT.01.07.20151.2	Camden	3	SR 1243 MULLEN RD	FROM US 17 BUS. TO US 17 BUS.	1	2	2WU	NO	NO	0.29	32	*	20	125	496			33	1		48	*
2017CPT.01.07.20271.1	Currituck	4	SR 1142 WATERLILLY RD	FROM SR 1154 TO END OF MAINT	1	2	2WU	NO	NO	3.1	16	*	40		2,744			184			24	*
2017CPT.01.07.20271.1	Currituck	5	SR 1167 OLD COINJOCK CANAL RD	FROM SR 1141 TO END OF MAINT.	1	2	2WU	NO	NO	0.08	18	*	5		77			5				*
2017CPT.01.07.20271.1	Currituck	6	SR 1141 N. OLD US 158 RD	FROM SR 1405 TO SR 1167	1	2	2WU	NO	NO	0.2	24	*	20		257			17				*
2017CPT.01.07.20271.1	Currituck	7	SR 1405 WATERLILLY RD	FROM US 158 TO 1141		2	2WU	NO	NO	0.51	24	*	2		655			44			24	*
2017CPT.01.07.20271.2	Currituck	8	SR 1348 N. MARSHALL RD	FROM SR 1203 TO CUL-DE-SAC	1	2	2WU	NO	NO	0.47	20.5	*	10		516	23		36			16	*
2017CPT.01.07.20271.2	Currituck	9	SR 1349 S. MARSHALL RD	FROM SR 1203 TO SR 1348	1	2	2WU	NO	NO	0.2	20.5	*	2		220	41		17			16	*
2017CPT.01.07.20272.1	Currituck	10	SR 1506 EAGLE CREEK RD	FROM SR 1215 TO SR 1507	2	2	2WU	NO	NO	0.9	20	*					459	31			24	*
2017CPT.01.07.20272.2	Currituck	11	SR 1507 GREEN VIEW RD	FROM SR 1508 TO SR 1508	2	2	2WU	NO	NO	2.5	20	*					1,274	87				*
2017CPT.01.07.20272.3	Currituck	12	SR 1509 EAGLETON CIRCLE	FROM SR 1507 TO SR 1507	2	2	2WU	NO	NO	0.8	20	*					818	56				*
2017CPT.01.07.20701.1	Pasquotank	13	SR 1135 BLOUNT RD	FROM SR 1101 TO SR 1139	1	2	2WU	NO	NO	1.56	19	*	30		1,588	250		121	100		48	*
2017CPT.01.07.20701.2	Pasquotank	14	SR 1114 RAMSEY RD	FROM SR 1103 TO SR 1116	1	2	2WU	NO	NO	1.05	18	*	15		1,013			68	100		48	*
2017CPT.01.07.20701.3	Pasquotank	15	SR 1119 HOBBS LANDING RD	FROM SR 1118 TO END OF MAINT.	1	2	2WU	NO	NO	0.99	18	*	20		1,042			70	100		16	*
2017CPT.01.07.20701.4	Pasquotank	16	SR 1103 REBEILLION POINT RD	FROM SR 1118 TO END OF MAINT	1	2	2WU	NO	NO	1.18	18	*	15		1,139			76	100		16	*
2017CPT.01.07.20701.5	Pasquotank	17	SR 1118 DRY RIDGE RD	FROM SR 1200 TO END OF MAINT	1	2	2WU	NO	NO	4.39	18	*	50		4,236			284	75		80	*
36249.3694	Pasquotank	18	SR 1352 BROTHERS LANE	FROM US 158 TO END OF PAVEMENT	1	2	2WU	NO	NO	1.14	20	*	20		1,632			109			16	*
GRAND TOTAL										22.64		1	309	275	19,209	314	2,551	1,479	475	1	488	1

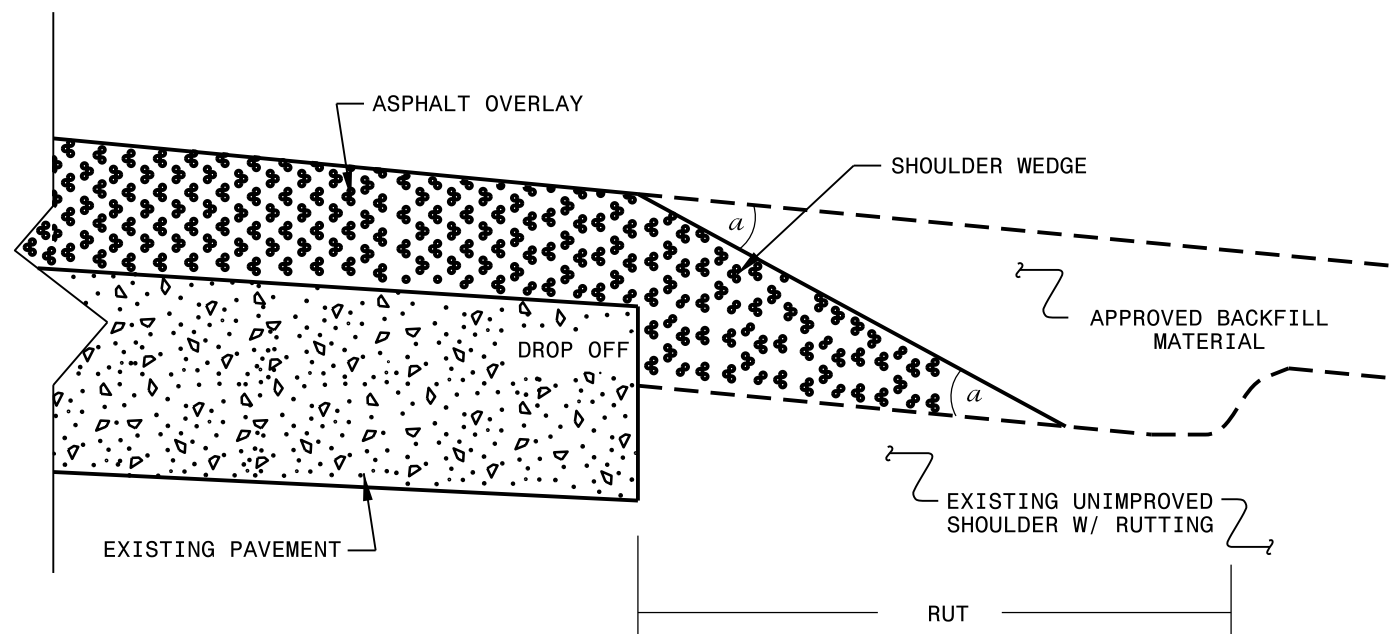
- NOTES:
 1) DETAIL DOES NOT APPLY TO OGAFCC AND ULTRA-THIN BONDED WEARING COURSE.
 2) BACKFILL SHOULDER WITH APPROVED MATERIAL.
 3) THE SHOULDER WEDGE DEVICE MAY BE DISENGAGED AT PAVED DRIVEWAYS AND SIDE STREETS.



SHOULDER WEDGE DETAIL
 (Resurfacing Projects w/ Widening or
 with Existing Paved Shoulder having no dropoffs)



SHOULDER WEDGE DETAIL
 (Resurfacing Projects w/ NO Widening)

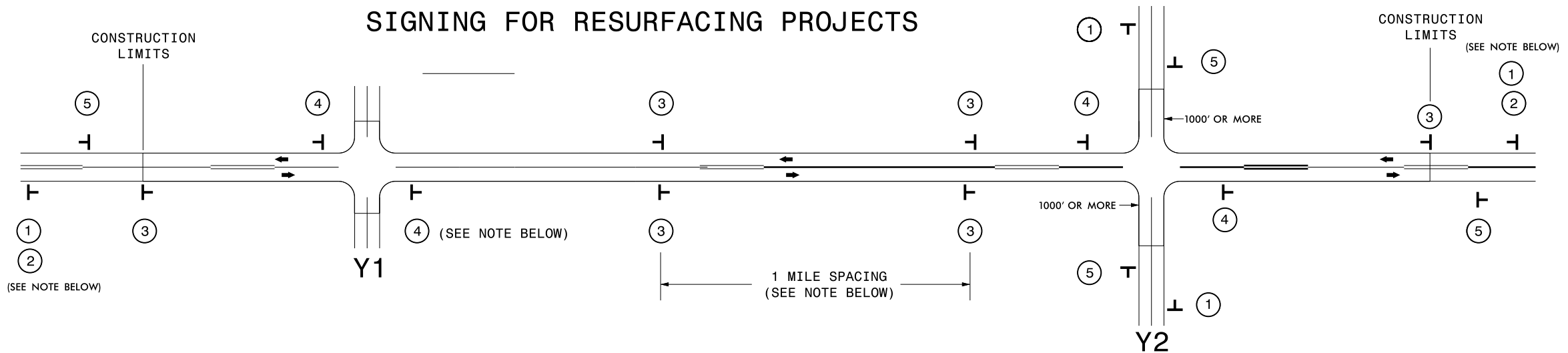


SHOULDER WEDGE DETAIL
 (Resurfacing Adjacent to
 Rutted Shoulder)

- SHOULDER WEDGE ANGLE = 30°

CONTRACT STANDARDS AND DEVELOPMENT UNIT	
Office 919-707-6950	FAX 919-250-4119
SHOULDER WEDGE DETAILS	
ORIGINAL BY: T.SPELL	DATE: 7-19-11
MODIFIED BY:	DATE: 10/16/12
CHECKED BY:	DATE:
FILE SPEC.: s:\usr\details\stand\shoulderwedgedetail.dgn	

SIGNING FOR RESURFACING PROJECTS



LEGEND	
T	STATIONARY SIGN
←	DIRECTION OF TRAFFIC FLOW

MAINLINE (-L-) SIGNING

-Y- LINE SIGNING

SIGNING NOTES AND PLACEMENT PER DIRECTION	<p>① </p> <p>② </p> <p>PLACE 1000' PRIOR TO BEGINNING OF CONSTRUCTION LIMITS. ONLY USED ON -Y- LINES IF RESURFACING LIMITS EXTEND 1000' ALONG -Y- LINE.</p> <p>#2 SIGN ONLY USED WHEN RESURFACING LIMITS ARE 2 OR MORE MILES IN LENGTH. ROUND UP TO NEXT WHOLE NUMBER. (NO FRACTIONAL OR DECIMAL NUMBERS)</p>	<p>NO REQUIRED STATIONARY SIGNING FOR THE FOLLOWING -Y- LINE CONDITIONS:</p> <ol style="list-style-type: none"> 1) LESS THAN 1000' OF RESURFACING ALONG -Y- LINE 2) SUBDIVISION ROADS 3) DEAD END ROADS <p>WHEN PAVING/CONSTRUCTION ACTIVITIES PROCEED ACROSS AN UNSIGNED -Y- LINE, ADVANCE WARNING PORTABLE SIGNS SHALL BE USED ALONG THE -Y- LINE AS SHOWN BELOW. REMOVE UPON COMPLETION OF WORK.</p> <p></p> <p></p> <p>PLACED 500' IN ADVANCE OF FLAGGER. PLACED 250' IN ADVANCE OF FLAGGER.</p>
	<p>③ </p> <p>PLACE INITIALLY AT THE CONSTRUCTION LIMITS AND SPACED 1 MILE APART THEREAFTER. IF NO -Y- LINES EXIST, PLACE 2ND SET 1/2 MILE FROM THE CONSTRUCTION LIMITS AND THEN SPACE 1 MILE THEREAFTER.</p>	
	<p>④ </p> <p>THESE ARE FOR -Y- LINES THAT ARE "THROUGH" ROADWAYS. DEAD END AND SUBDIVISION ROADS ARE NOT "THROUGH" ROADWAYS. INSTALL 500' +/- FROM EACH -Y- LINE APPROACH AS SHOWN ABOVE. FOR MULTIPLE -Y- LINES THAT ARE SEPARATED BY 0.25 MILES OR LESS, TREAT AS A SINGLE UNIT AND INSTALL WITHIN 500' OF EACH APPROACH. A MAXIMUM OF 2 SIGN SETS PER MILE. DO NOT INSTALL WHEN -Y- LINES ARE WITHIN 0.5 MILES FROM "END ROAD WORK" SIGN.</p>	
	<p>⑤ </p> <p>PLACE 500' FOLLOWING THE END OF CONSTRUCTION LIMITS.</p>	



RESURFACING
ADVANCE WARNING SIGNS
FOR
RURAL AND SUBURBAN
2 LANE ROADWAYS