

Kitty Hawk (Map 1) Dare County



Legend

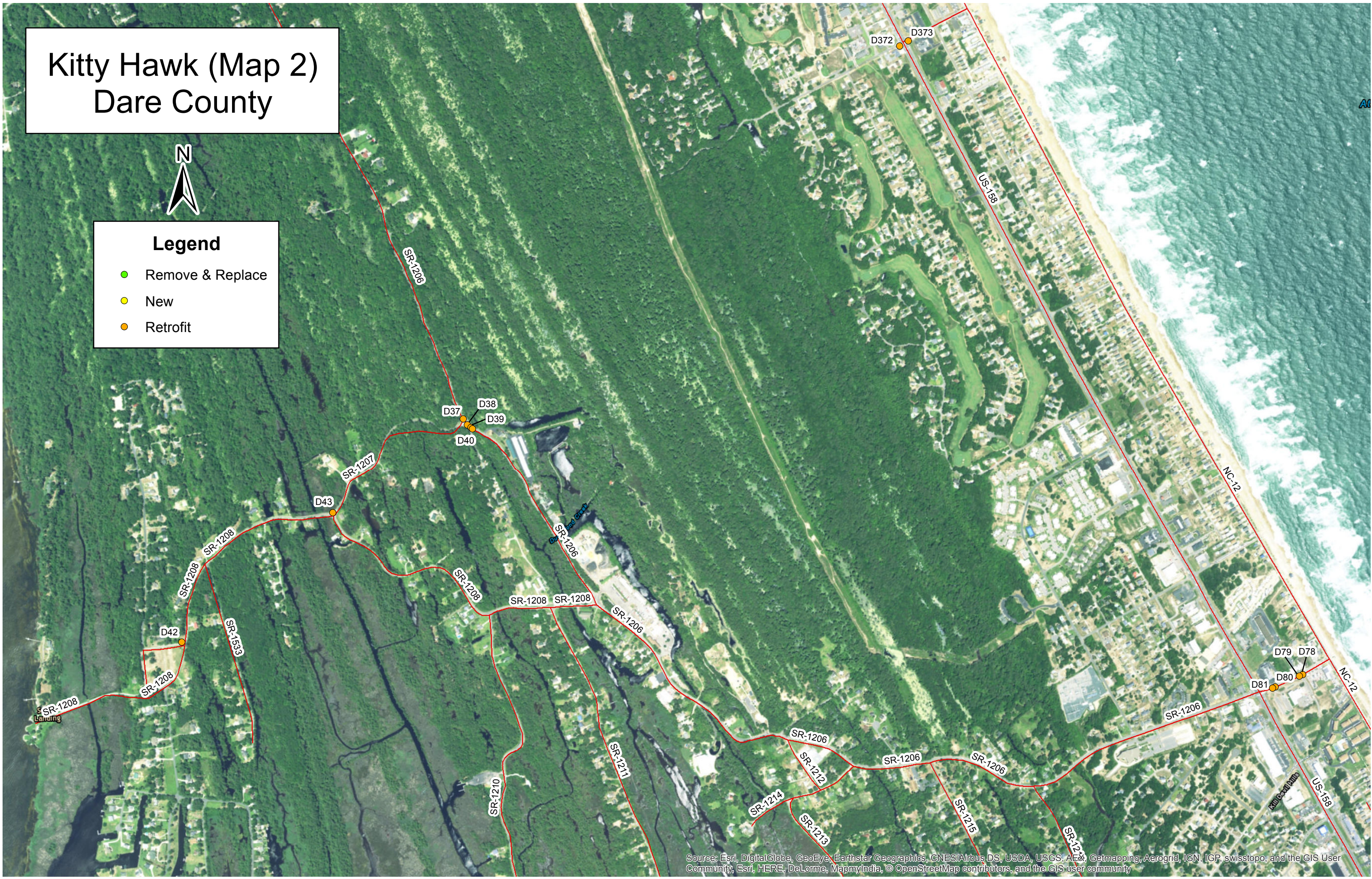
- Remove & Replace
- New
- Retrofit

Kitty Hawk (Map 2) Dare County



Legend

- Remove & Replace
- New
- Retrofit



Source: Esri, DigitalGlobe, GeoEye, Earthstar Geographics, CNES/Airbus DS, USDA, USGS, AeroX, Getmapping, Aerogrid, IGN, IGP, swisstopo, and the GIS User Community, Esri, HERE, DeLorme, MapmyIndia, © OpenStreetMap contributors, and the GIS user community

Kitty Hawk (Map 3) Dare County



Legend

- Remove & Replace
- New
- Retrofit



County	Municipality	Major Route	Minor Route	Number of New Ramps	New Ramp ID	Number of Retrofit Ramps	Retrofit Ramp ID	Number of Remove & Replace	Remove & Replace ID	Map #
DARE	KITTY HAWK	US-158	JUNIPER TRAIL	N/A		1	D8	N/A		1
DARE	KITTY HAWK	US-158	YADKIN BANK	N/A		2	D9, D10	N/A		1
DARE	KITTY HAWK	US-158	WELLS FARGO BANK	N/A		4	D11, D12, D13, D14	N/A		1
DARE	KITTY HAWK	US-158	THE MARKET PLACE	N/A		4	D15, D16, D17, D18, D19	N/A		1
DARE	KITTY HAWK	US-158	BARRIER ISLAND STATION	N/A		1	D49	N/A		1
DARE	KITTY HAWK	US-158	SOUTHERN SHORES REALTY	N/A		2	D20, D21	N/A		1
DARE	KITTY HAWK	US-158	DUCK WOODS DR	N/A		4	D22, D23, D24, D25	N/A		1
DARE	KITTY HAWK	US-158	BIRCH LANE	N/A		4	D44, D45, D46, D47	N/A		1
DARE	KITTY HAWK	US-158	DOGWOOD TRAIL	N/A		2	D26, D27	N/A		1
DARE	KITTY HAWK	US-158	SR-1206	N/A		2	D31, D32	N/A		1
DARE	KITTY HAWK	US-158	LANDING TRAIL	N/A		2	D28, D29	N/A		1
DARE	KITTY HAWK	US-158	SR-1480	N/A		1	D30	N/A		1
DARE	KITTY HAWK		SR-1206 @ DOMINION POWER	N/A		4	D33, D34, D35, D36	N/A		1
DARE	KITTY HAWK		SR-1418 @ TOWN HALL	N/A		2	D1, D2	N/A		1
DARE	KITTY HAWK	US-158	SR-1249	N/A		1	D373	N/A		2
DARE	KITTY HAWK	US-158	ECKNER ST	N/A		1	D372	N/A		2
DARE	KITTY HAWK	US-158	SR-1206	2	D374, D375	N/A		N/A		3
DARE	KITTY HAWK		SR-1206 @ POST OFFICE	N/A		4	D78, D79, D80, D81	N/A		2 & 3
DARE	KITTY HAWK		SR-1206 & TWIFORD ST	N/A		2	D39, D40	N/A		2
DARE	KITTY HAWK		SR-1206 & SR-1207	N/A		2	D37, D38	N/A		2
DARE	KITTY HAWK		SR-1208 & SR-1207	N/A		1	D43	N/A		2
DARE	KITTY HAWK		SR-1208 & SR-1209	N/A		1	D42	N/A		2

NOTE: IF SAW CUTTING OF ASPHALT PAVEMENT IS REQUIRED, TO PROVIDE A NEAT CLEAN EDGE, THE WORK INVOLVED SHALL BE CONSIDERED INCIDENTAL TO THE VARIOUS CONTRACT ITEMS

ASSUMED

PROPOSED CONCRETE CURB RAMP

PROPOSED 5' CONCRETE SIDEWALK

Radius for Curb & Gutter is to follow existing edge of pavement.

PROPOSED 2' CONCRETE TRAFFIC ISLAND (SURFACE MOUNTED)

250'

Radius for Curb & Gutter is to follow existing edge of pavement

PROPOSED 5' CONCRETE SIDEWALK

PROPOSED CONCRETE CURB RAMP

NORTH CAROLINA DEPARTMENT OF TRANSPORTATION
DIVISION 1
113 AIRPORT DR.
EDENTON, NC 27932 (252) 482-1850



COUNTY: DARE

DATE: January 2, 2018

(US 158 and Kitty Hawk Road)

WBS: 47437.3.1