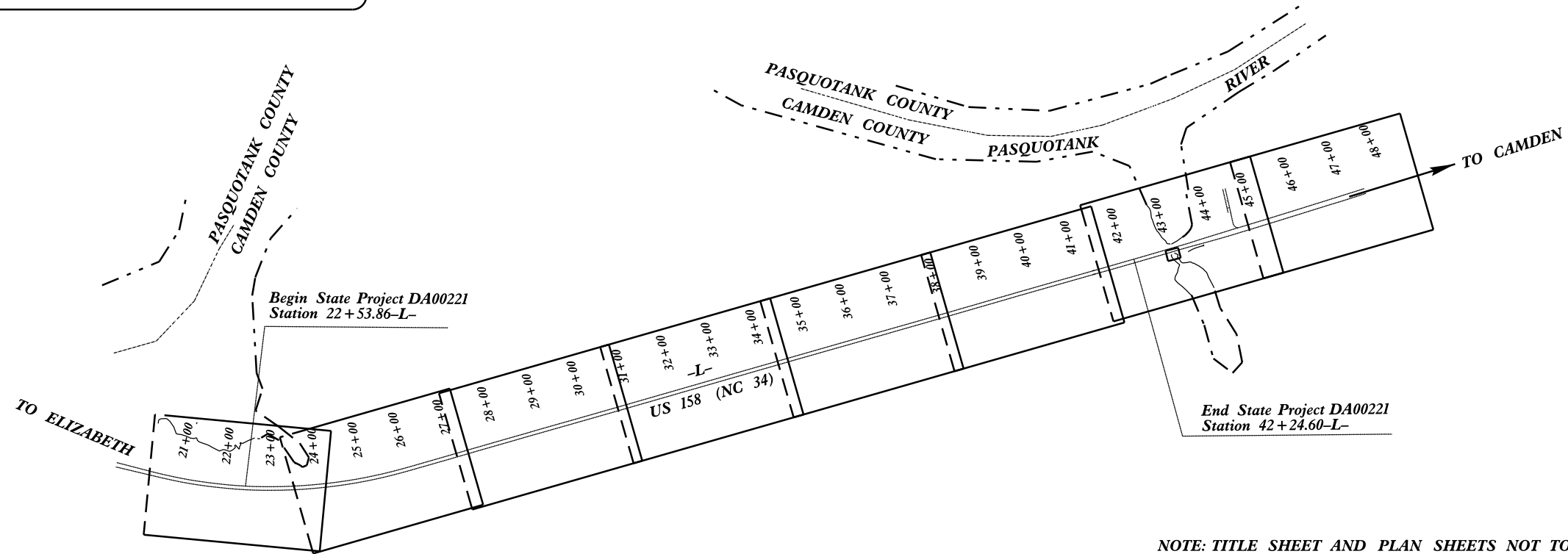
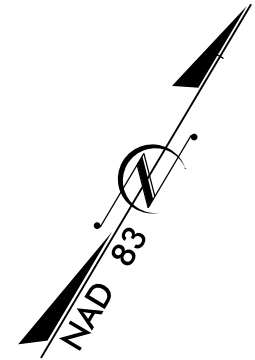
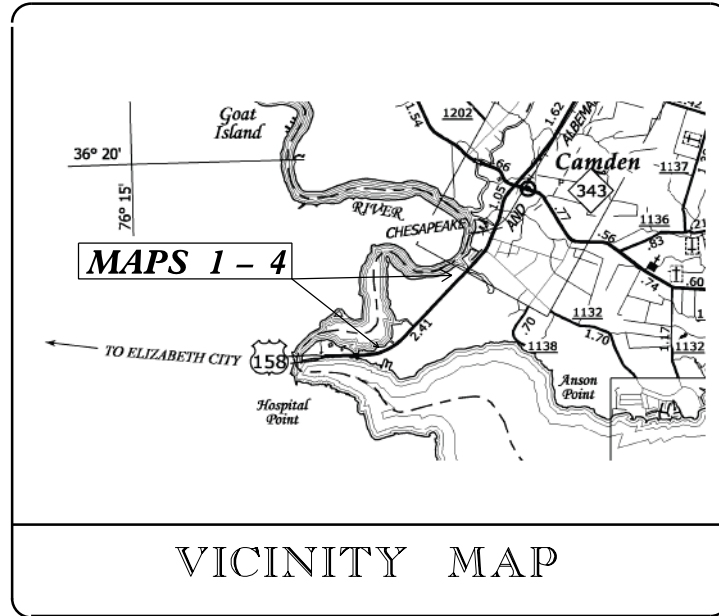


STATE	STATE PROJECT REFERENCE NO.	SHEET NO.	TOTAL SHEETS
N.C.	ICR.10151.19, ETC.	1	18

STATE OF NORTH CAROLINA  
DIVISION OF HIGHWAYS

**CAMDEN COUNTY**

LOCATION: US 158 / NC 34 FROM EAST OF PASQUOTANK RIVER TO NORTH OF SR 1257 (HAVENWOOD DR.) BETWEEN ELIZABETH CITY AND CAMDEN  
TYPE OF WORK: MILLING, RESURFACING & PAVEMENT MARKINGS



NOTE: TITLE SHEET AND PLAN SHEETS NOT TO SCALE.  
STATIONS ARE IN METRIC AND NOT TO BE USED FOR QUANTITIES.

SEE SHEETS 10 THROUGH 14 FOR MAP LIMITS

**NTS**

**PROJECT LENGTH**

- LENGTH OF ROADWAY PROJECT MAP 1 = 978.04'
- LENGTH OF ROADWAY PROJECT MAP 2 = 263.09'
- LENGTH OF ROADWAY PROJECT MAP 3 = 275.92'
- LENGTH OF ROADWAY PROJECT MAP 4 = 160.43'

Prepared in the Office of:  
**DIVISION OF HIGHWAYS**  
113 Airport Dr., Edenton NC 27932

2012 STANDARD SPECIFICATIONS

LETTING DATE:

W. B. HOBBS, P.E.  
DIVISION PROJECT MANAGER

C. E. SLACHTA  
DIVISION PROPOSALS ENGINEER

**DIVISION OF HIGHWAYS  
STATE OF NORTH CAROLINA**



09/09/99

09-FEB-2015 09:15  
C:\Users\VP\p115119\Projects\10151.19\camden\AP\Proj\Proj\10151.19-2414A-RDY\_TSH.DGN

**CONTRACT: DA00221 WBS ICR.10151.19, ETC.**

CONTRACT NO.: DA00221 WBS ELEMENT: ICR.10151.19, ETC.

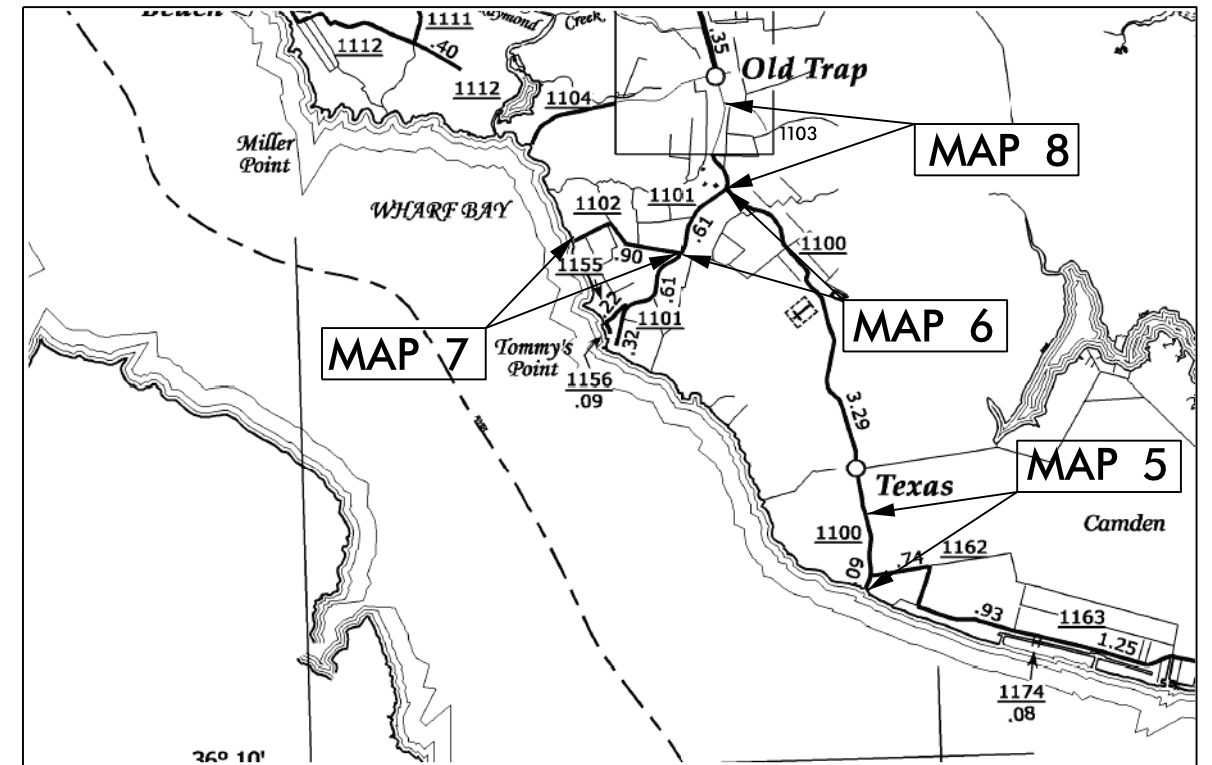
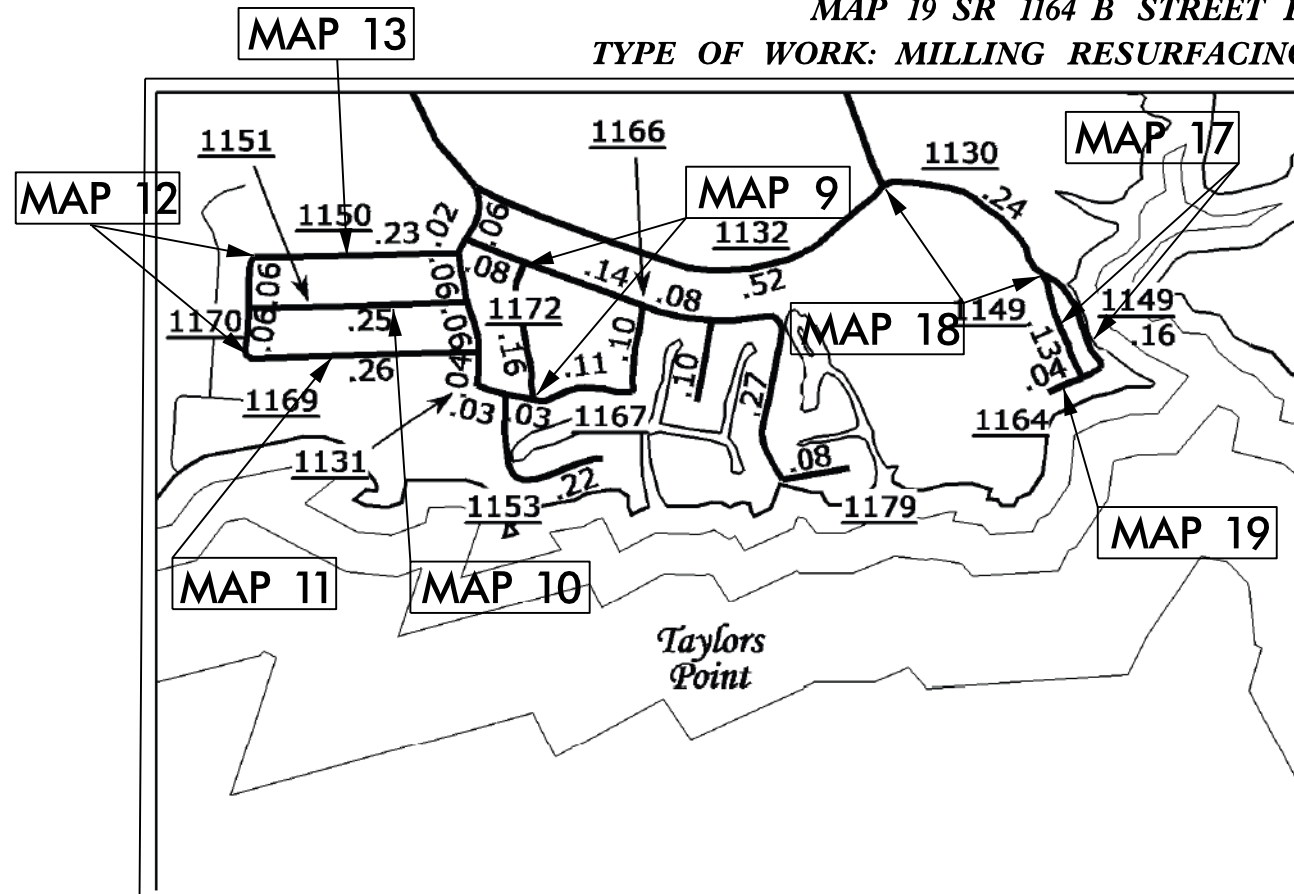
STATE OF NORTH CAROLINA  
DIVISION OF HIGHWAYS

**CAMDEN COUNTY**

**LOCATION:** MAP 5 SR 1100 TEXAS RD. FROM BROADCREEK RD TO DEAD END  
 MAP 6 SR 1101 ONE MILL FROM SR 1100 TO SR 1102  
 MAP 7 SR 1102 THOMAS POINT FROM SR 1101 TO DEAD END  
 MAP 8 SR 1100 FROM SR 1103 TO SR 1101  
 MAP 9 SR 1172 VINEYARD DR FROM SR 1152 TO SR 1166  
 MAP 10 SR 1151 DOGWOOD FROM SR 1131 TO SR 1170  
 MAP 11 SR 1169 HOLLY DR FROM SR 1170 TO SR 1131  
 MAP 12 SR 1170 WISTERIA FROM SR 1150 TO SR 1169  
 MAP 13 SR 1150 PINEYWOOD DR FROM SR 1131 TO SR 1170  
 MAP 17 SR 1149 TREASURE POINT RD. FROM SR 1130 TO 1130  
 MAP 18 SR 1130 TREASURE POINT RD. FROM SR 1132 TO 1149  
 MAP 19 SR 1164 B STREET FROM SR 1149 TO DEAD END

**TYPE OF WORK:** MILLING RESURFACING & PAVEMENT MARKINGS

STATE	STATE PROJECT REFERENCE NO.	SHEET NO.
N.C.	ICR.10151.19, ETC.	2
STATE PROJ. NO.	F.A. PROJ. NO.	DESCRIPTION
1CR.20151.51		MAP 5
1CR.20151.52		MAP 6
1CR.20151.53		MAP 7
1CR.20151.54		MAP 8
1CR.20151.55		MAP 9
1CR.20151.56		MAP 10
1CR.20151.57		MAP 11
1CR.20151.58		MAP 12
1CR.20151.59		MAP 13
1SP.20155.2		MAP 17
1SP.20155.3		MAP 18
1SP.20155.4		MAP 19



**NTS**

**PROJECT LENGTH**

LENGTH OF ROADWAY PROJECT	MAP 5 =	0.89 MI.
LENGTH OF ROADWAY PROJECT	MAP 6 =	0.61 MI.
LENGTH OF ROADWAY PROJECT	MAP 7 =	0.91 MI.
LENGTH OF ROADWAY PROJECT	MAP 8 =	0.69 MI.
LENGTH OF ROADWAY PROJECT	MAP 9 =	0.16 MI.
LENGTH OF ROADWAY PROJECT	MAP 10 =	0.25 MI.
LENGTH OF ROADWAY PROJECT	MAP 11 =	0.26 MI.
LENGTH OF ROADWAY PROJECT	MAP 12 =	0.12 MI.
LENGTH OF ROADWAY PROJECT	MAP 13 =	0.23 MI.
LENGTH OF ROADWAY PROJECT	MAP 17 =	0.27 MI.
LENGTH OF ROADWAY PROJECT	MAP 18 =	0.23 MI.
LENGTH OF ROADWAY PROJECT	MAP 19 =	0.05 MI.

Prepared in the Office of:  
**DIVISION OF HIGHWAYS**

113 Airport Dr., Edenton NC, 27932

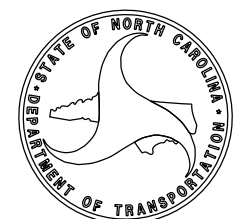
2012 STANDARD SPECIFICATIONS

LETTING DATE:

W.B. HOBBS, P.E.  
DIVISION PROJECT MANAGER

C.E. SLACHTA  
DIVISION PROPOSALS ENGINEER

DIVISION OF HIGHWAYS  
STATE OF NORTH CAROLINA



10/03/13

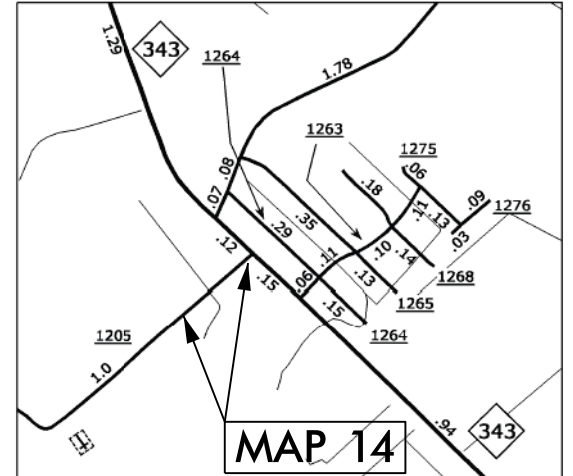
CONTRACT NO.: DA00221 WBS ELEMENT: ICR.10151.19, ETC.

# STATE OF NORTH CAROLINA DIVISION OF HIGHWAYS CAMDEN COUNTY

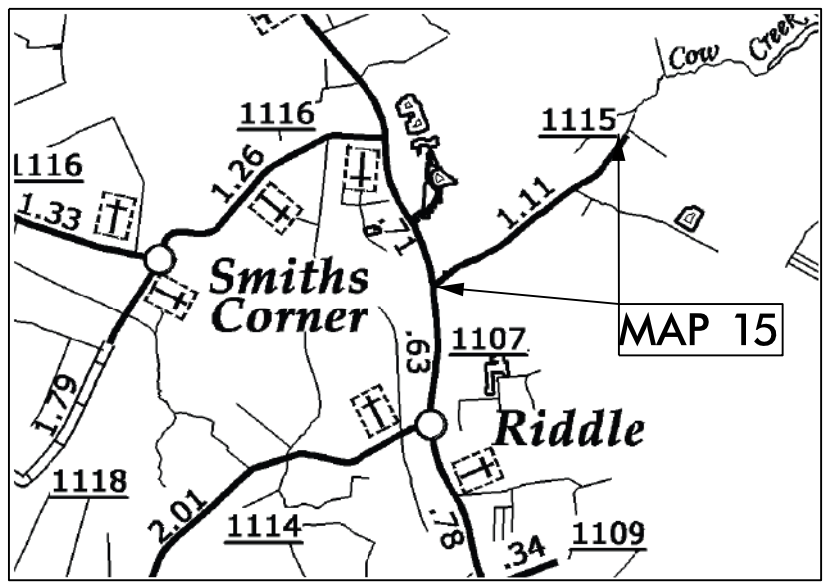
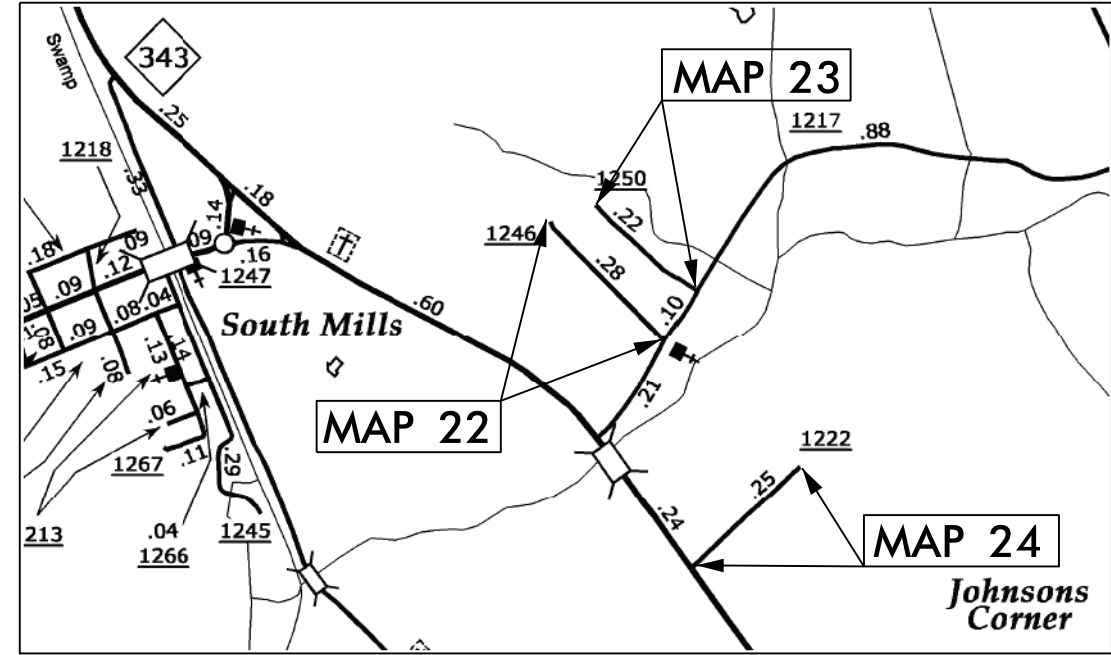
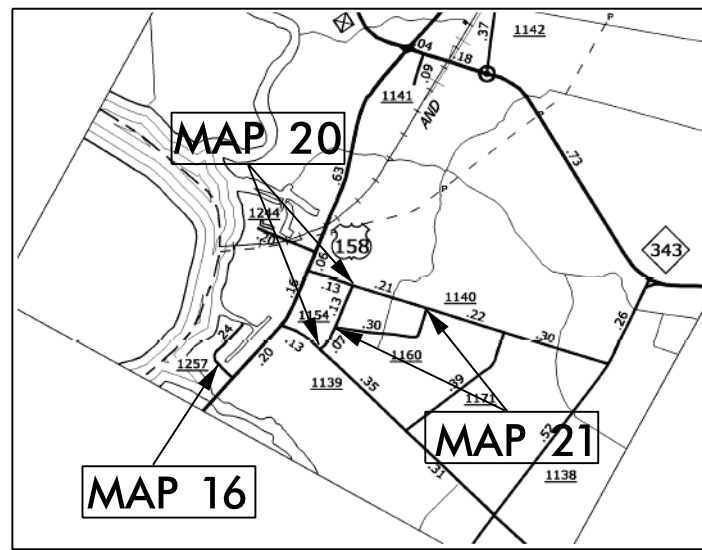
STATE	STATE PROJECT REFERENCE NO.	SHEET NO.	TOTAL SHEETS
N.C.	ICR.10151.19, ETC.	3	
STATE PROJ. NO.	F.A. PROJ. NO.	DESCRIPTION	
ICR.20151.60		MAP 14	
ICR.20151.61		MAP 15	
1SP.20155.1		MAP 16	
1SP.20155.5		MAP 20	
1SP.20155.6		MAP 21	
1SP.20155.7		MAP 22	
1SP.20155.8		MAP 23	
1SP.20155.9		MAP 24	

**LOCATION:** MAP 14 SR 1205 SHIPYARD RD. FROM NC 343 TO STATION 13+43  
MAP 15 SR 1115 GARRINGTON ISLAND RD. FROM SR 1107 TO CUL-DE-SAC  
MAP 16 SR 1257 HAVENWOOD DR FROM US 158 TO CUL-DE-SAC  
MAP 20 SR 1154 HOWARD ST FROM SR 1139 TO 1140  
MAP 21 SR 1160 ROBERT DR WILLIS ST FROM SR 1154 TO 1140  
MAP 22 SR 1246 PUBLO RD. FROM SR 1217 TO DEAD END  
MAP 23 SR 1250 SWINSON RD. FROM SR 1217 TO DEAD END  
MAP 24 SR 1222 MCCOY RD. FROM NC 343 TO DEAD END

**TYPE OF WORK:** MILLING RESURFACING & PAVEMENT MARKINGS



Spences Corner Vicinity



**NTS**

PROJECT LENGTH	
LENGTH OF ROADWAY PROJECT	MAP 14 = 0.26 MI.
LENGTH OF ROADWAY PROJECT	MAP 15 = 1.10 MI.
LENGTH OF ROADWAY PROJECT	MAP 16 = 0.20 MI.
LENGTH OF ROADWAY PROJECT	MAP 20 = 0.20 MI.
LENGTH OF ROADWAY PROJECT	MAP 21 = 0.30 MI.
LENGTH OF ROADWAY PROJECT	MAP 22 = 0.30 MI.
LENGTH OF ROADWAY PROJECT	MAP 23 = 0.22 MI.
LENGTH OF ROADWAY PROJECT	MAP 24 = 0.25 MI.

Prepared in the Office of:  
**DIVISION OF HIGHWAYS**  
113 Airport Dr., Edenton NC, 27932

---

2012 STANDARD SPECIFICATIONS

LETTING DATE: \_\_\_\_\_

W.B. HOBBS, P.E.  
DIVISION PROJECT MANAGER

C.E. SLACHTA  
DIVISION PROPOSALS ENGINEER

DIVISION OF HIGHWAYS  
STATE OF NORTH CAROLINA

DRAWN BY: BMB

# C O N T R A C T P A V E M E N T S C H E D U L E

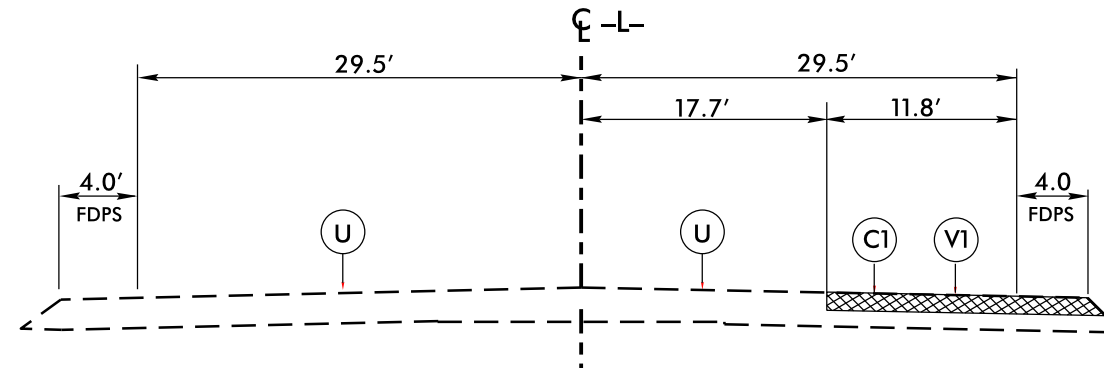
C1	PROP. APPROX. 1½" ASPHALT CONCRETE SURFACE COURSE, TYPE S9.5B, AT AN AVERAGE RATE OF 168 LBS. PER SQ. YD.
C2	PROP. APPROX. 1½" ASPHALT CONCRETE SURFACE COURSE, TYPE SF9.5A, AT AN AVERAGE RATE OF 165 LBS. PER SQ. YD.
C3	PROP. APPROX. 1¼" ASPHALT CONCRETE SURFACE COURSE, TYPE SF9.5A, AT AN AVERAGE RATE OF 137.5 LBS. PER SQ. YD.
C4	PROP. APPROX. ¾" ASPHALT CONCRETE SURFACE COURSE, TYPE S4.75A, AT AN AVERAGE RATE OF 75 LBS. PER SQ. YD.
V1	MILLING BITUMINOUS PAVEMENT. 1½" DEPTH.
U	EXISTING PAVEMENT.

# PAVEMENT SCHEDULE

C1	PROP. APPROX. 1½" ASPHALT CONCRETE SURFACE COURSE, TYPE S9.5B, AT AN AVERAGE RATE OF 168 LBS. PER SQ. YD.
V1	MILLING BITUMINOUS PAVEMENT. 1½" DEPTH.
U	EXISTING PAVEMENT

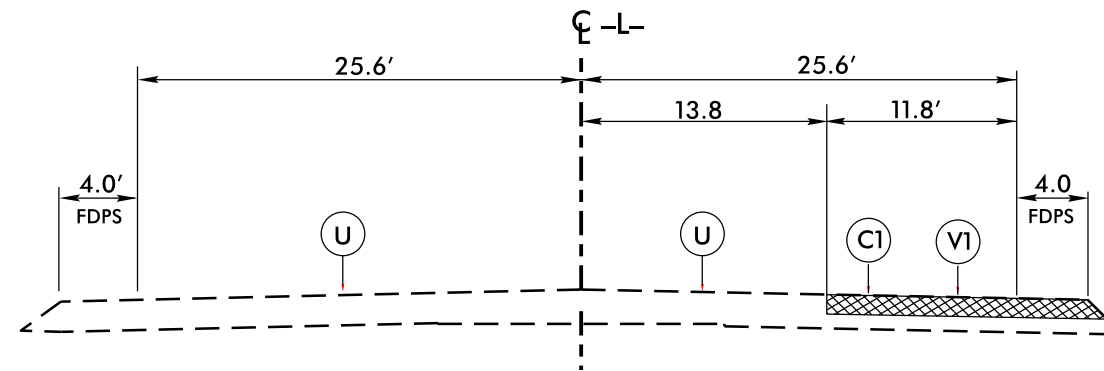


PROJECT REFERENCE NO. 1CR.10151.19, ETC.	SHEET NO. 5
ROADWAY DESIGN ENGINEER	PAVEMENT DESIGN ENGINEER



**TYPICAL SECTION NO. 1**

USE WITH MAP 1  
(SEE SHEET NO.10,11)



**TYPICAL SECTION NO. 2**

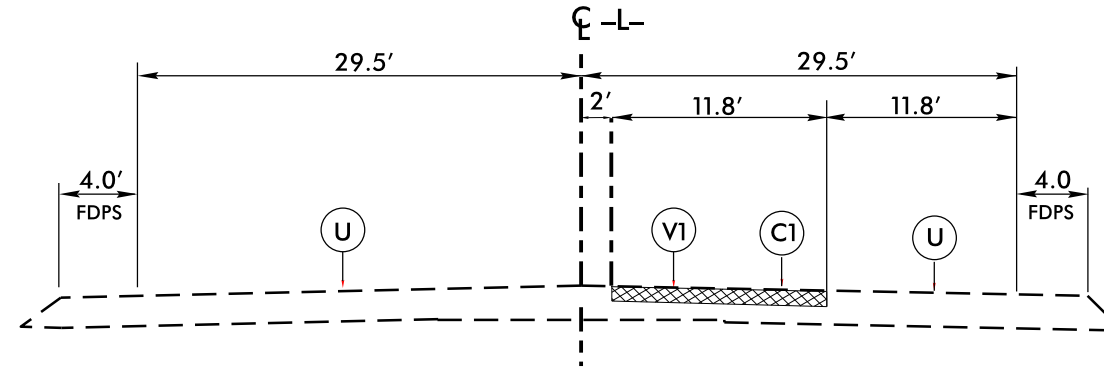
USE WITH MAP 2  
(SEE SHEET NO.12)

**PAVEMENT SCHEDULE**

C1	PROP. APPROX. 1½" ASPHALT CONCRETE SURFACE COURSE, TYPE S9.5B, AT AN AVERAGE RATE OF 168 LBS. PER SQ. YD.
V1	MILLING BITUMINOUS PAVEMENT. 1½" DEPTH.
U	EXISTING PAVEMENT

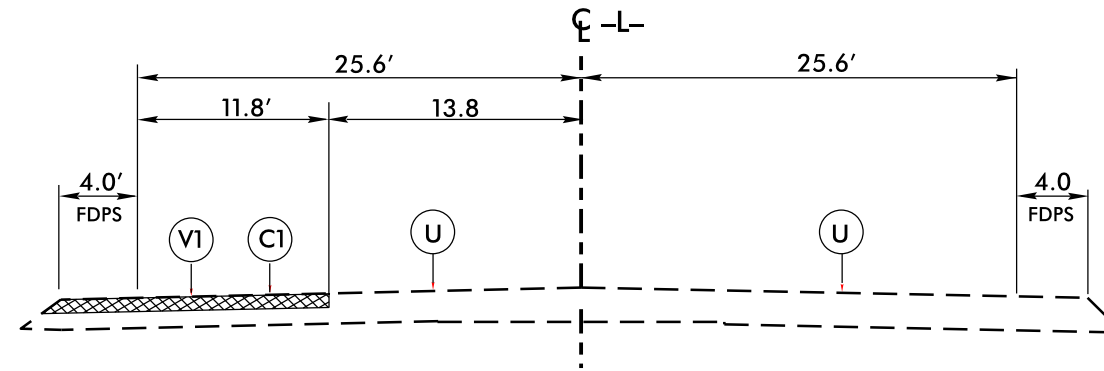


PROJECT REFERENCE NO.	SHEET NO.
TCR.10151.19. ETC.	6
ROADWAY DESIGN ENGINEER	PAVEMENT DESIGN ENGINEER



**TYPICAL SECTION NO. 3**

USE WITH MAP 3  
(SEE SHEET NO.13,14)



**TYPICAL SECTION NO. 4**

USE WITH MAP 4  
(SEE SHEET NO.13)

PAVEMENT SCHEDULE

C2	PROP. APPROX. 1½" ASPHALT CONCRETE SURFACE COURSE, TYPE SF9.5A, AT AN AVERAGE RATE OF 165 LBS. PER SQ. YD.
U	EXISTING PAVEMENT.

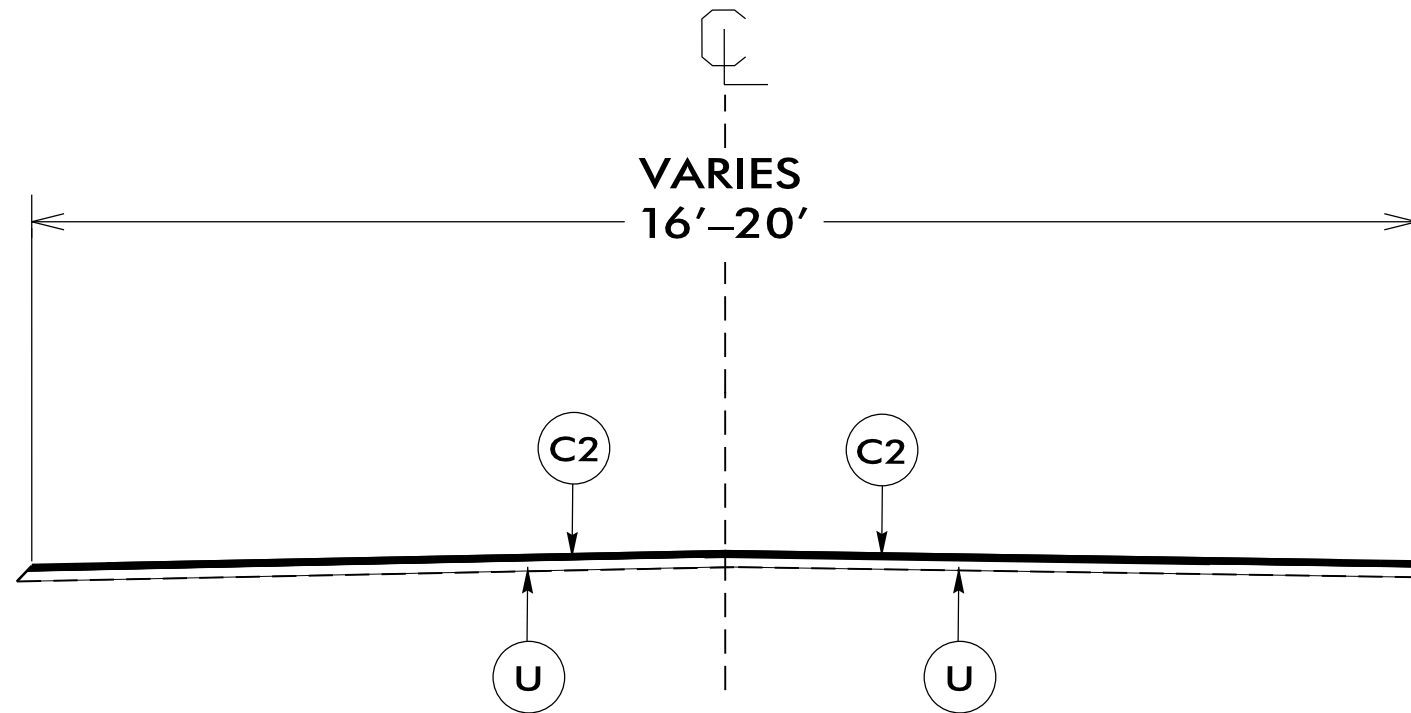
PROJECT REFERENCE NO.	SHEET NO.
1CR.10151.19, ETC.	7

NOTES:

\*ALL PAVED S.R. ROADS TO BE RESURFACED TO THE ENDS OF THE RADII, OR AS DIRECTED BY THE ENGINEER

\*EDGES, PAVEMENT WIDENING, INTERSECTIONS, AND BRIDGE FLARES ARE INCLUDED IN THE TABLE OF QUANTITIES

\*SHOULDERS TO BE RECONSTRUCTED BY OTHERS



**TYPICAL SECTION NO. 5**

USE WITH MAP 5 - 13

NTS

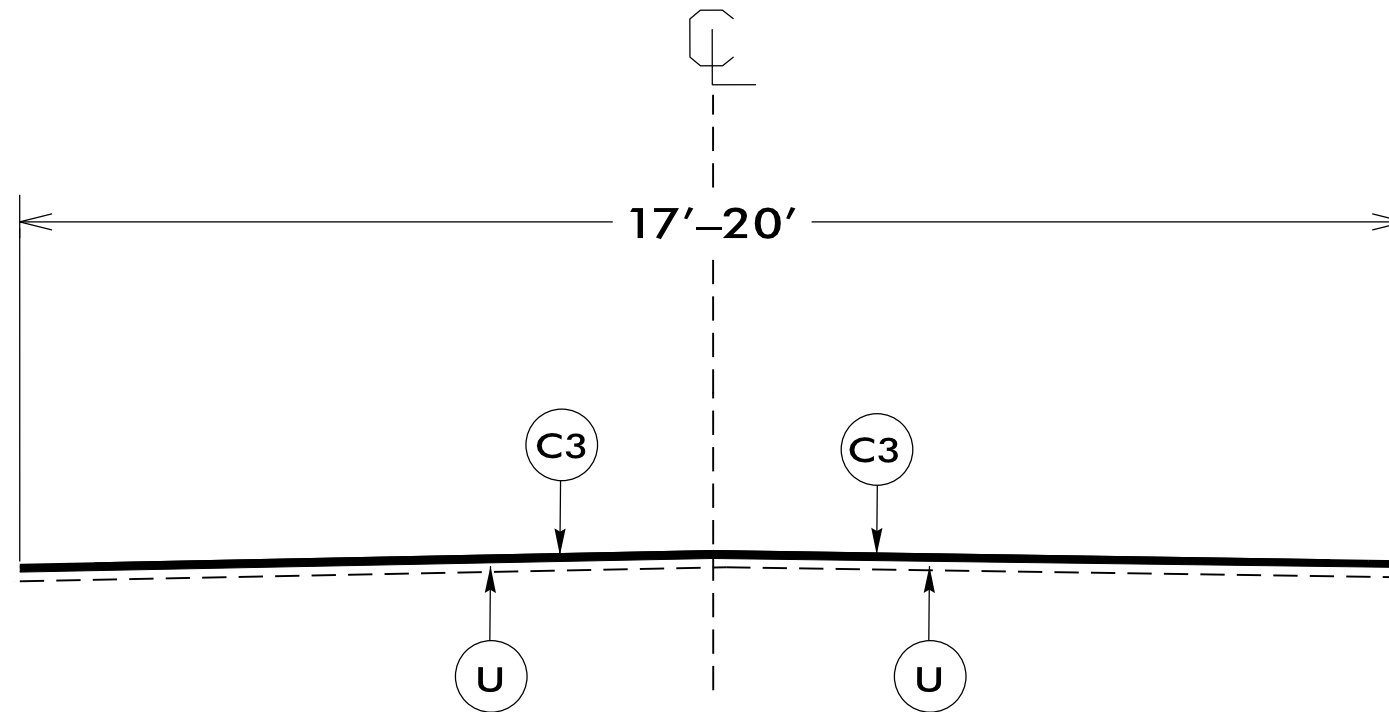
P A V E M E N T S C H E D U L E

C3	PROP. APPROX. 1 1/4" ASPHALT CONCRETE SURFACE COURSE, TYPE SF9.5A, AT AN AVERAGE RATE OF 137.5 LBS. PER SQ. YD.
U	EXISTING PAVEMENT.

PROJECT REFERENCE NO.	SHEET NO.
1CR.10151.19, ETC.	8

NOTES:

- \*ALL PAVED S.R. ROADS TO BE RESURFACED TO THE ENDS OF THE RADII, OR AS DIRECTED BY THE ENGINEER
- \*EDGES, PAVEMENT WIDENING, INTERSECTIONS, AND BRIDGE FLARES ARE INCLUDED IN THE TABLE OF QUANTITIES
- \*SHOULDERS TO BE RECONSTRUCTED BY OTHERS



**TYPICAL SECTION NO. 6**

USE WITH MAP 14 & 15

NTS



PAVEMENT SCHEDULE

C4	PROP. APPROX. 3/4" ASPHALT CONCRETE SURFACE COURSE, TYPE S4.75A, AT AN AVERAGE RATE OF 75 LBS. PER SQ. YD.
U	EXISTING PAVEMENT.

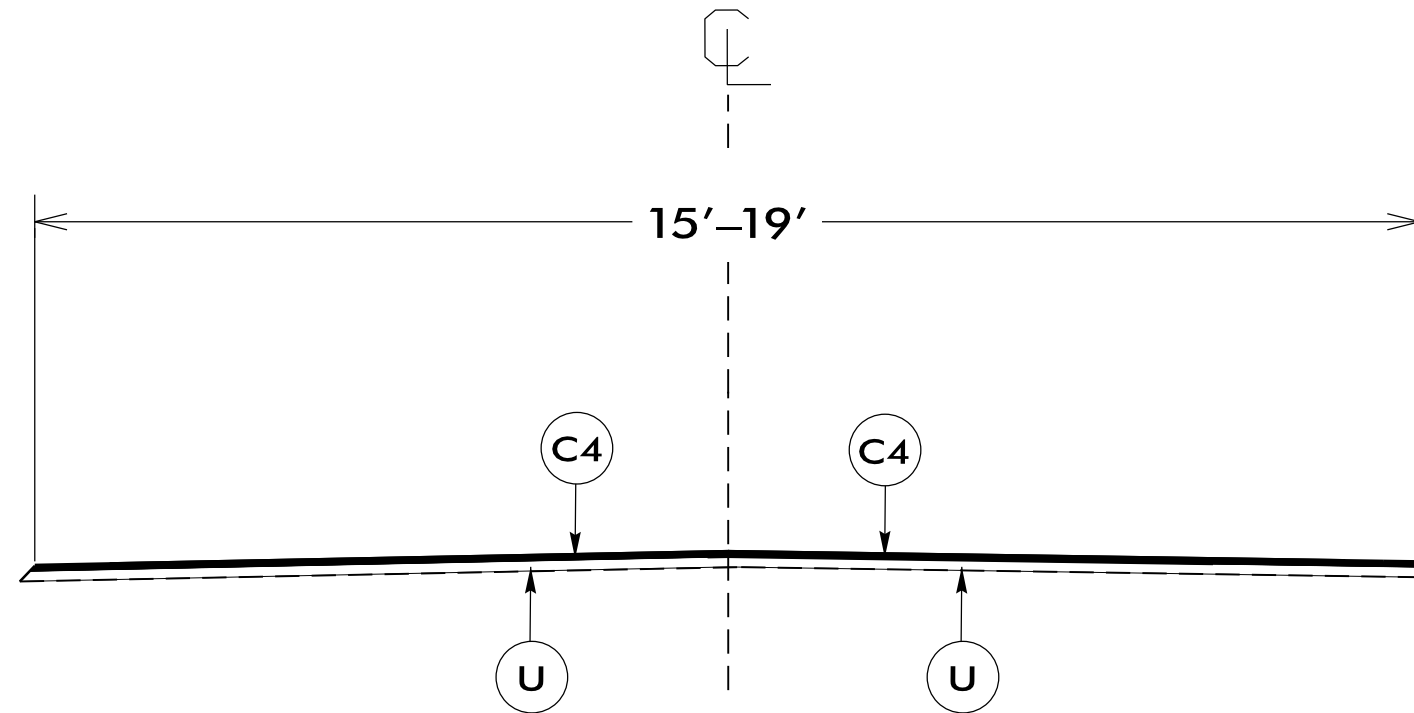
PROJECT REFERENCE NO.	SHEET NO.
1CR.10151.19, ETC.	9

NOTES:

\*ALL PAVED S.R. ROADS TO BE RESURFACED TO THE ENDS OF THE RADII, OR AS DIRECTED BY THE ENGINEER

\*EDGES, PAVEMENT WIDENING, INTERSECTIONS, AND BRIDGE FLARES ARE INCLUDED IN THE TABLE OF QUANTITIES

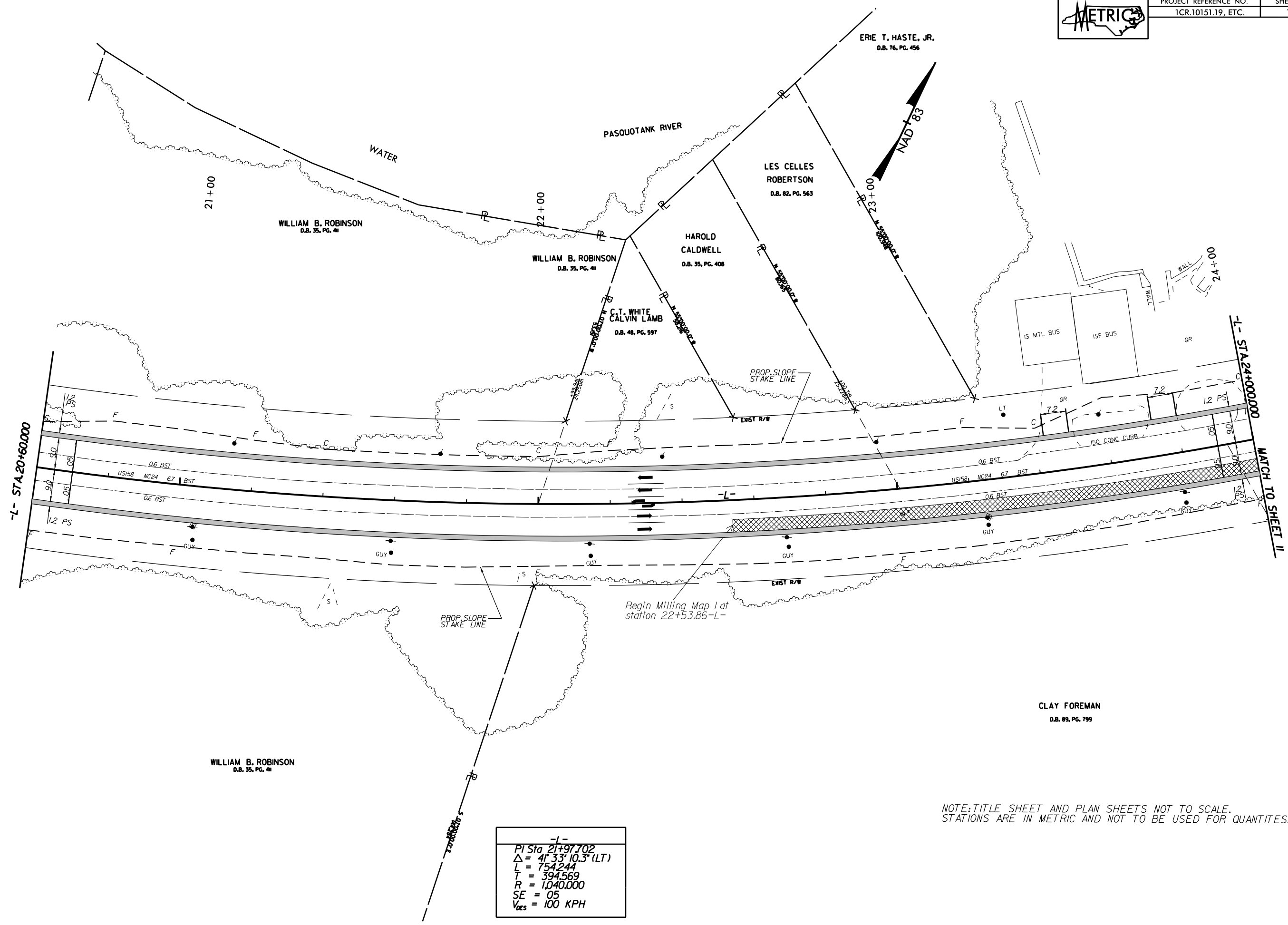
\*SHOULDERS TO BE RECONSTRUCTED BY OTHERS



**TYPICAL SECTION NO. 7**

USE WITH MAP 16 - 24

NTS

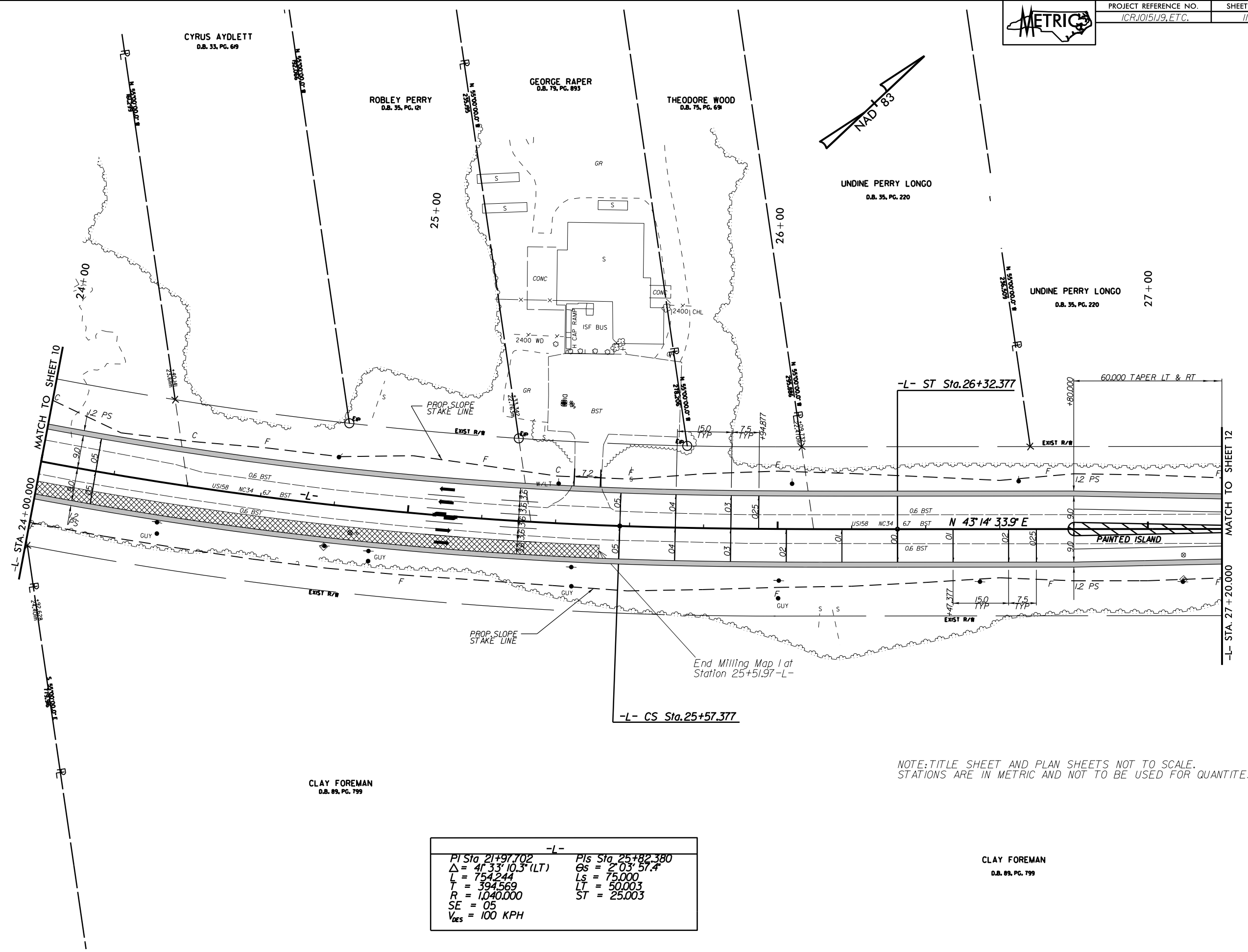


REVISIONS  
 09-FEB-2015 08:53  
 C:\Users\j\p\1015119\Projects\1015119-2414-camden\1015119-2414A\_101\_08\_P54.DGN  
 6/17/25

-L-
PI Sta 21+97.702
$\Delta = 41^{\circ} 33' 10.3" (LT)$
$L = 754.244$
$T = 394.569$
$R = 1,040.000$
SE = 05
$V_{DES} = 100 \text{ KPH}$

NOTE: TITLE SHEET AND PLAN SHEETS NOT TO SCALE.  
STATIONS ARE IN METRIC AND NOT TO BE USED FOR QUANTITIES.

CLAY FOREMAN  
D.B. 89, PG. 799



REVISIONS  
 09-FEB-2015 08:04  
 C:\Users\jv\Documents\Projects\AR-2414-cemden\MP-roj\AR-2414A\_101\_01\_P54.DGN  
 5/17/25

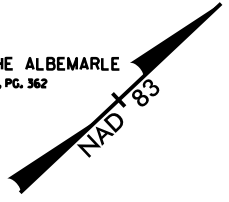
NOTE: TITLE SHEET AND PLAN SHEETS NOT TO SCALE.  
STATIONS ARE IN METRIC AND NOT TO BE USED FOR QUANTITIES.

-L-	
PI Sta 21+97.702	PIs Sta 25+82.380
$\Delta = 41^{\circ}33'10.3"$ (LT)	Gs = $2^{\circ}03'57.4"$
L = 754.244	Ls = 75.000
T = 394.569	LT = 50.003
R = 1,040.000	ST = 25.003
SE = 05	
V <sub>DES</sub> = 100 KPH	

CLAY FOREMAN  
D.B. 89, PG. 799



COLLEGE OF THE ALBEMARLE  
D.B. 80, PG. 362

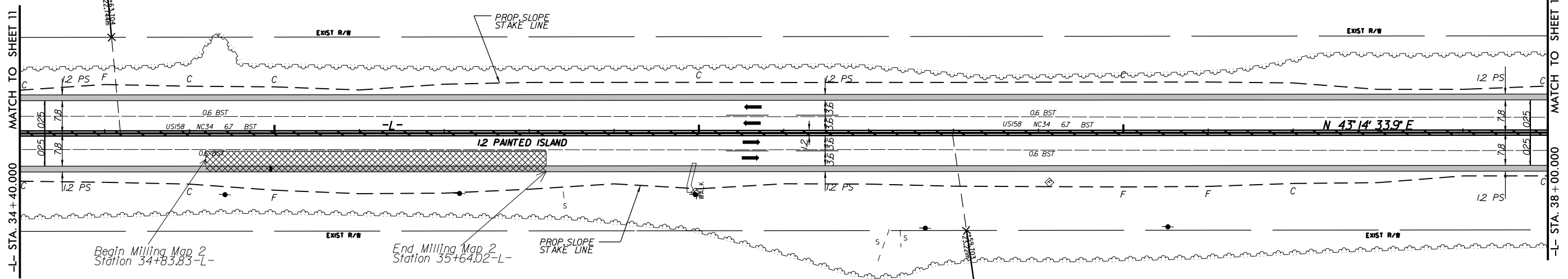


37+00

35+00

36+00

38+00



Begin Milling Map 2  
Station 34+83.83-L-

End Milling Map 2  
Station 35+64.02-L-

W.B. ROBINSON  
NO DEED REFERENCE AVAILABLE

NOTE: TITLE SHEET AND PLAN SHEETS NOT TO SCALE.  
STATIONS ARE IN METRIC AND NOT TO BE USED FOR QUANTITIES.

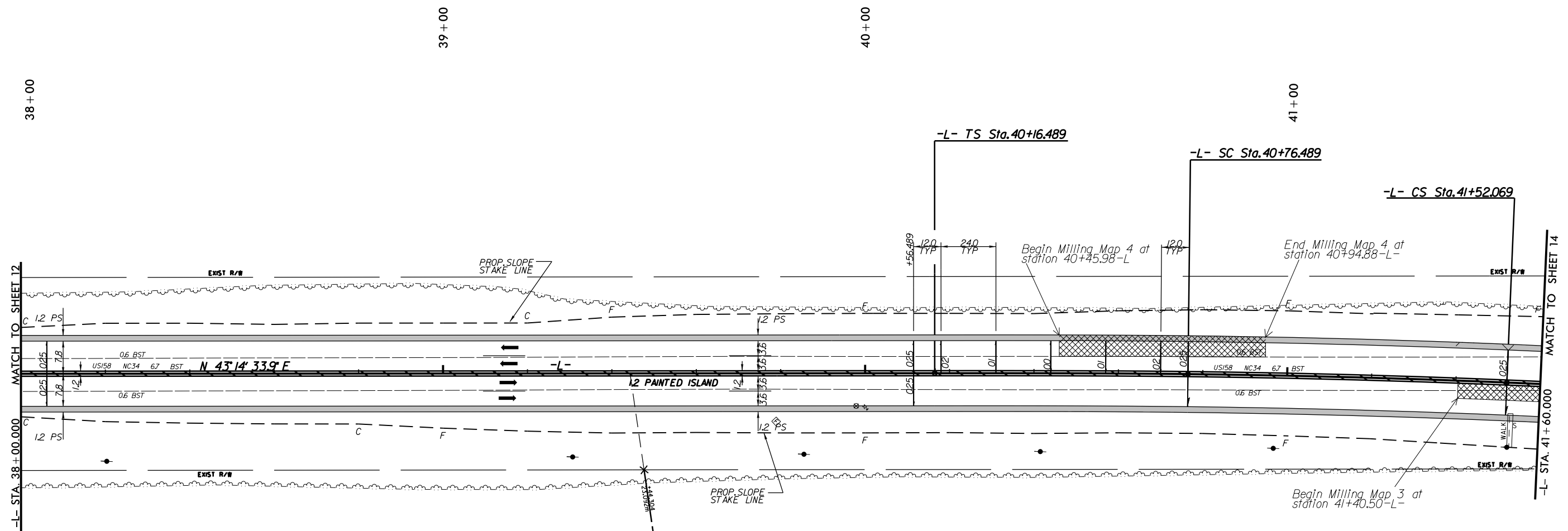
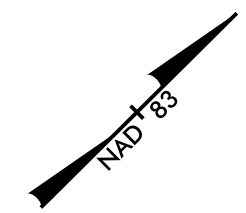
ROBERT LUTHER  
D.B. 86, PG. 843

REVISIONS

09-FEB-2015 08:09  
 C:\Users\j\Documents\Projects\AR-2414-csmdm\AR-2414A\_101\_12\_PFS-UDGN  
 8/17/25



COLLEGE OF THE ALBEMARLE  
D.B. 80, PG. 362



REVISIONS

09-FEB-2015 08:07  
 C:\Users\j...  
 Projects\AR-2414-camden\MP-roj\AR-2414A\_101\_13\_PSP-L004  
 At 11:02:58 AM

ROBERT LUTHER  
D.B. 86, PG. 843

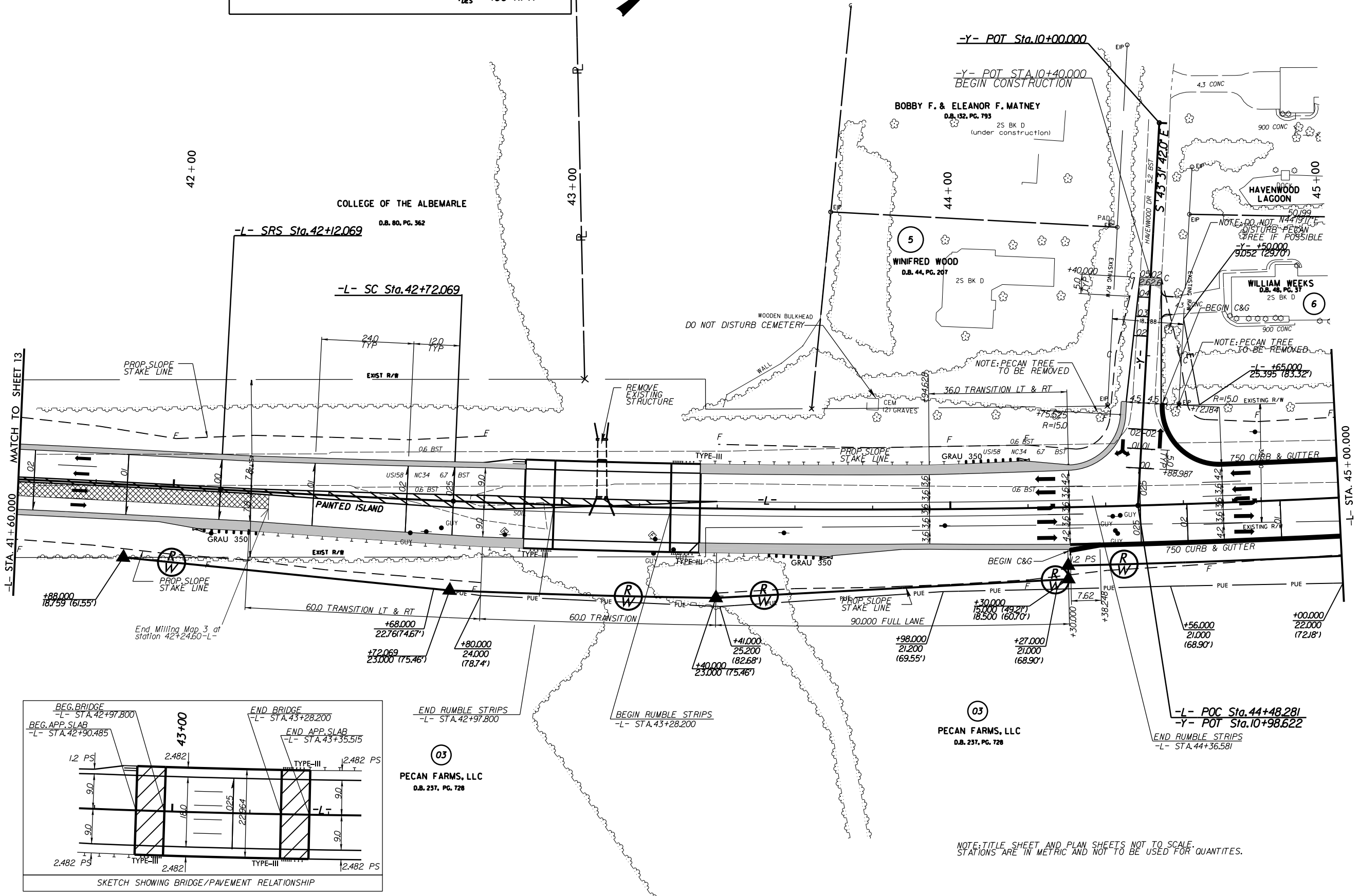
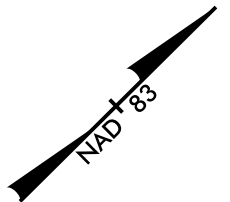
NOTE: TITLE SHEET AND PLAN SHEETS NOT TO SCALE.  
STATIONS ARE IN METRIC AND NOT TO BE USED FOR QUANTITIES.

-L-		
PIs Sta 40+56.489	PI Sta 41+4.282	PIs Sta 41+72.069
$\Theta_s = 0' 41' 15.2''$	$\Delta = 1' 43' 55.8''$ (RT)	$\Theta_s = 0' 41' 15.2''$
$L_s = 60,000$	$L = 75,580$	$L_s = 60,000$
$L_T = 40,000$	$T = 37,793$	$L_T = 40,000$
$ST = 20,000$	$R = 2,500,000$	$ST = 20,000$
	$SE = RC$	
	$V_{DES} = 100$ KPH	

03  
PECAN FARMS, LLC  
D.B. 237, PG. 728



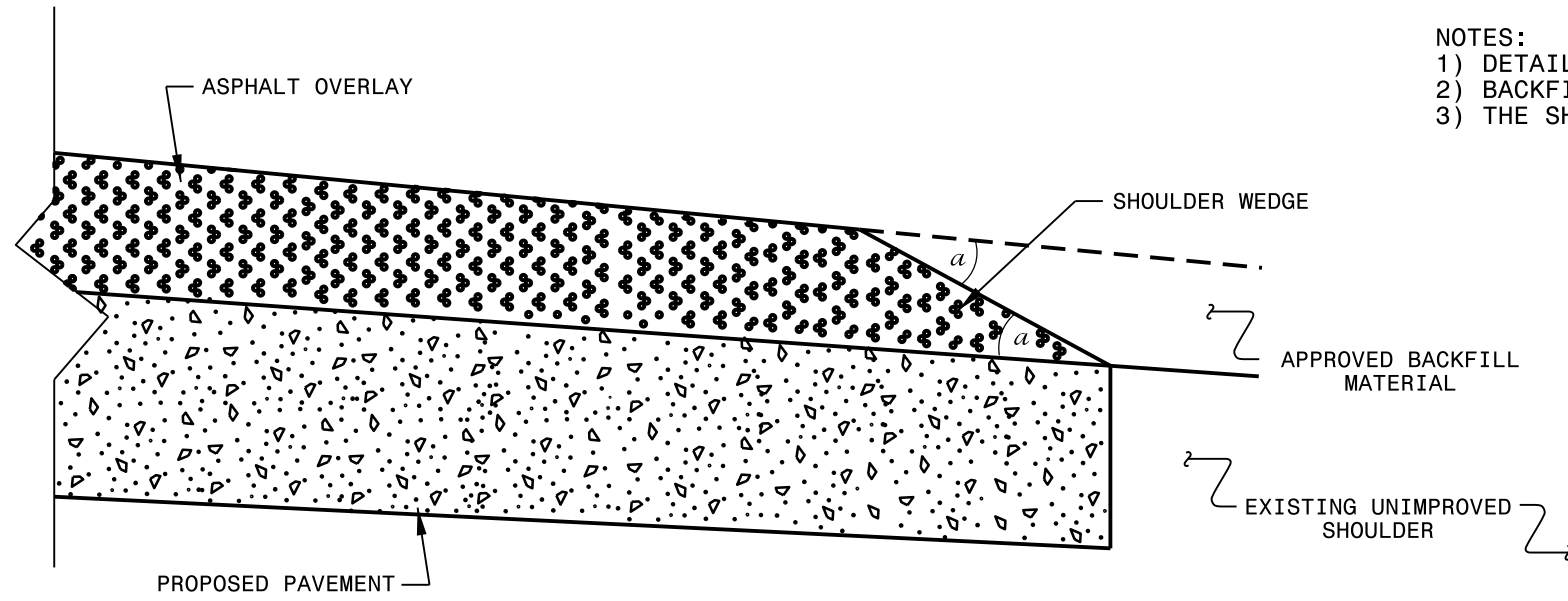
-L-		
Pls Sta 41+72.069	Pls Sta 42+52.069	Pls Sta 44+20.646
Gs = 0' 4" 15.2"	Gs = 0' 4" 15.2"	$\Delta = 6' 48" 08.1 (LT)$
Ls = 60.000	Ls = 60.000	L = 296.804
LT = 40.000	LT = 40.000	T = 148.577
ST = 20.000	ST = 20.000	R = 2,500.000
		SE = RC
		V <sub>DES</sub> = 100 KPH



NOTE: TITLE SHEET AND PLAN SHEETS NOT TO SCALE. STATIONS ARE IN METRIC AND NOT TO BE USED FOR QUANTITIES.

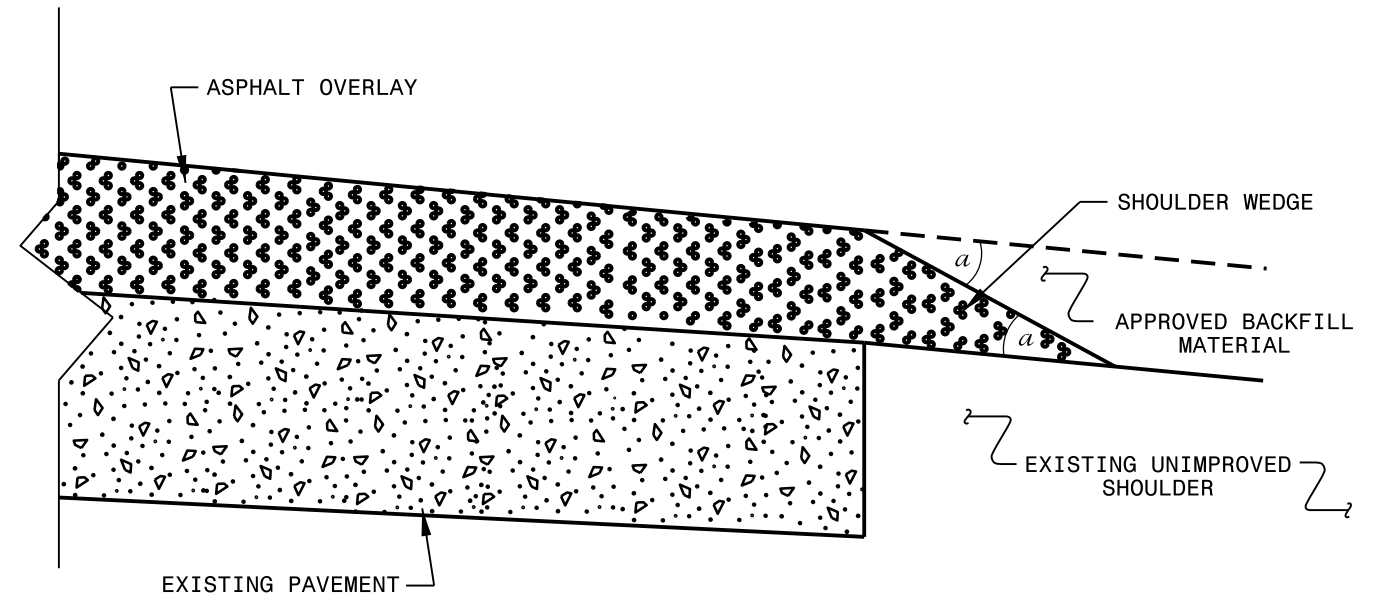
09-FEB-2015 08:41:00  
 C:\Users\j\OneDrive\Documents\Projects\AR-2414\AR-2414A\RDY\_14\_PSD.DGN  
 6/17/25

REVISIONS

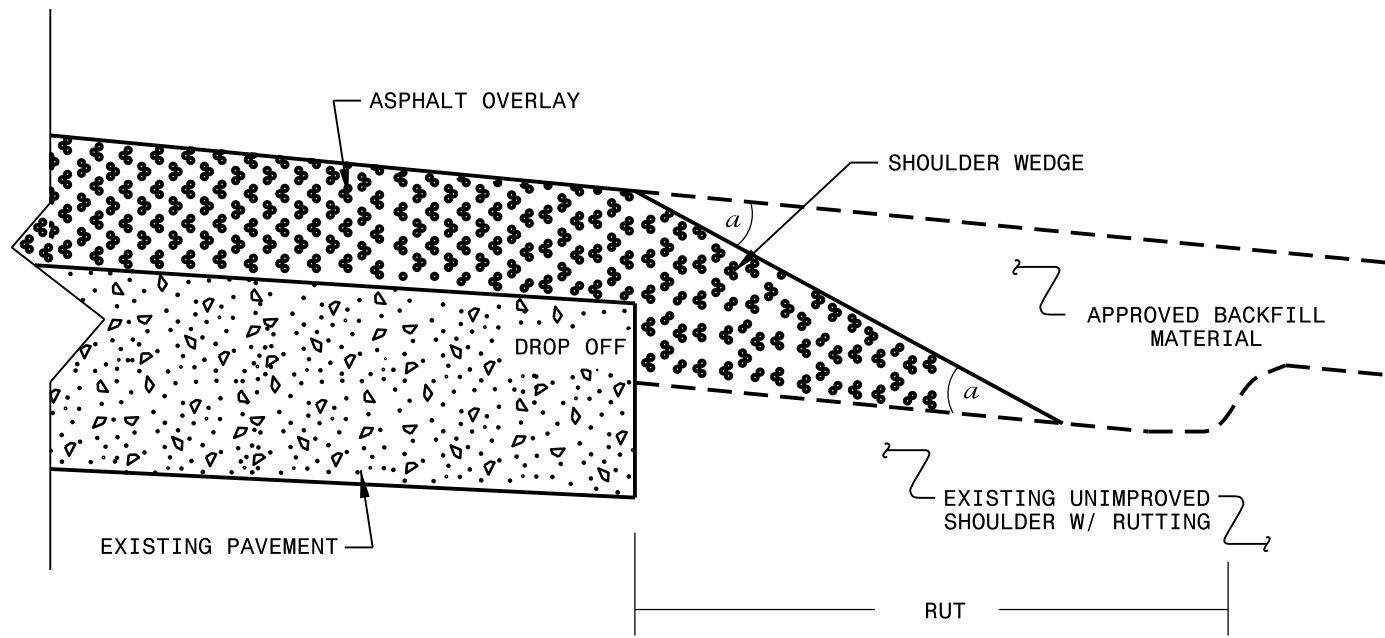


- NOTES:  
 1) DETAIL DOES NOT APPLY TO OGAFCC AND ULTRA-THIN BONDED WEARING COURSE.  
 2) BACKFILL SHOULDER WITH APPROVED MATERIAL.  
 3) THE SHOULDER WEDGE DEVICE MAY BE DISENGAGED AT PAVED DRIVEWAYS AND SIDE STREETS.

**SHOULDER WEDGE DETAIL**  
 (Resurfacing Projects w/ Widening or  
 with Existing Paved Shoulder having no dropoffs)



**SHOULDER WEDGE DETAIL**  
 (Resurfacing Projects w/ NO Widening)



**SHOULDER WEDGE DETAIL**  
 (Resurfacing Adjacent to  
 Rutted Shoulder)

- SHOULDER WEDGE ANGLE = 30°

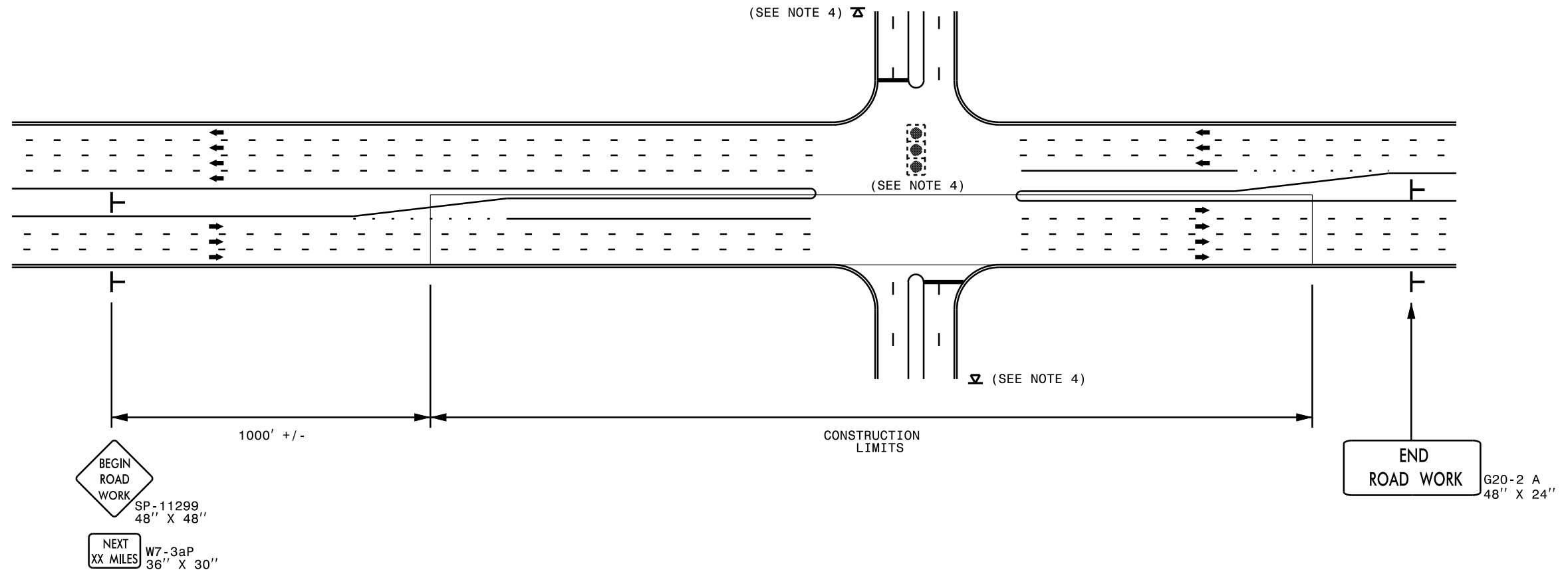
**CONTRACT STANDARDS  
 AND DEVELOPMENT UNIT**  
 Office 919-707-6950 FAX 919-250-4119

**SHOULDER WEDGE  
 DETAILS**

ORIGINAL BY: T.SPELL	DATE: 7-19-11
MODIFIED BY:	DATE: 10/16/12
CHECKED BY:	DATE:
FILE SPEC.: s:\usr\details\stand\shoulderwedgedetail.dgn	

09.FEB.2015 07:56  
 V:\015119\26431\1015119\paving\Maps\Shoulder detail\Revised Shoulder Wedge Detail.dgn  
 .bstatum At D:\CAD270261

## URBAN / SUBURBAN WORKZONES



### NOTES:

- 1) 48" x 48" SIZED SIGNS (SP- 11299) MAY BE REDUCED TO 36" X 36" ON ROADWAYS WITH SPEED LIMITS OF 40 MPH OR LESS.
- 2) MOUNT SIGNS THAT ARE LARGER THAN 10 SQUARE FEET IN AREA ON TWO OR MORE WOOD OR U-CHANNEL SUPPORTS. PERFORATED SQUARE TUBING SUPPORT SYSTEMS MAY SUPPORT LARGER AREAS ON A SINGLE SUPPORT. FOLLOW MANUFACTURER'S RECOMMENDATIONS. THESE SYSTEMS SHALL BE NCHRP 350 COMPLIANT AND NCDOT APPROVED.
- 3) ADVANCE WARNING SIGNS NOT REQUIRED ON NON-SIGNALIZED SIDE STREETS.
- 4) USE LAW ENFORCEMENT TO CONTROL TRAFFIC AT SIGNALIZED INTERSECTIONS AND PROVIDE PORTABLE "ROAD WORK AHEAD" (W20-1) SIGNS 500' IN ADVANCE ALONG BOTH APPROACHES FROM THE SIDE STREETS WHEN PAVING PROCEEDS THROUGH THE INTERSECTION.
- 5) LATERAL CLEARANCE AT ALL SIGN LOCATIONS SHALL BE 2' AS MEASURED FROM THE EDGE OF PAVEMENT OR THE FACE OF THE CURB. WHEN UNABLE TO OBTAIN THE LATERAL CLEARANCE WITHIN THE MEDIAN AREA USE SHOULDER MOUNTS ONLY.
- 6) SIGN MOUNT LOCATIONS SHALL NOT BLOCK SIDEWALKS OR DRIVEWAYS.
- 7) IF STATIONARY GENERAL WARNING SIGNS ARE USED, THEY WILL BE PAID FOR PER SECTION 104 OF THE NCDOT STANDARD SPECIFICATIONS AS EXTRA WORK.
- 8) IF MILLED AREAS ARE NOT PAVED BACK BY THE END OF THE WORK DAY, PORTABLE SIGNS SHALL BE USED TO WARN DRIVERS OF THE PRESENT CONDITIONS. THESE ARE TO INCLUDE, BUT NOT LIMITED TO "ROUGH ROAD" W8-8, "UNEVEN LANES" W8-11, "GROOVED PAVEMENT" W8-15 w/MOTORCYCLE PLAQUE MOUNTED BELOW. THESE ARE TO BE DOUBLE INDICATED ON MULTI-LANE ROADWAYS WITH SPEED LIMITS 45 MPH AND GREATER WHERE LATERAL CLEARANCE CAN BE OBTAINED WITHIN THE MEDIAN AREAS. THESE PORTABLE SIGNS ARE INCIDENTAL TO THE OTHER ITEMS OF WORK INCLUDED IN THE TEMPORARY TRAFFIC CONTROL (LUMP SUM) PAY ITEM.

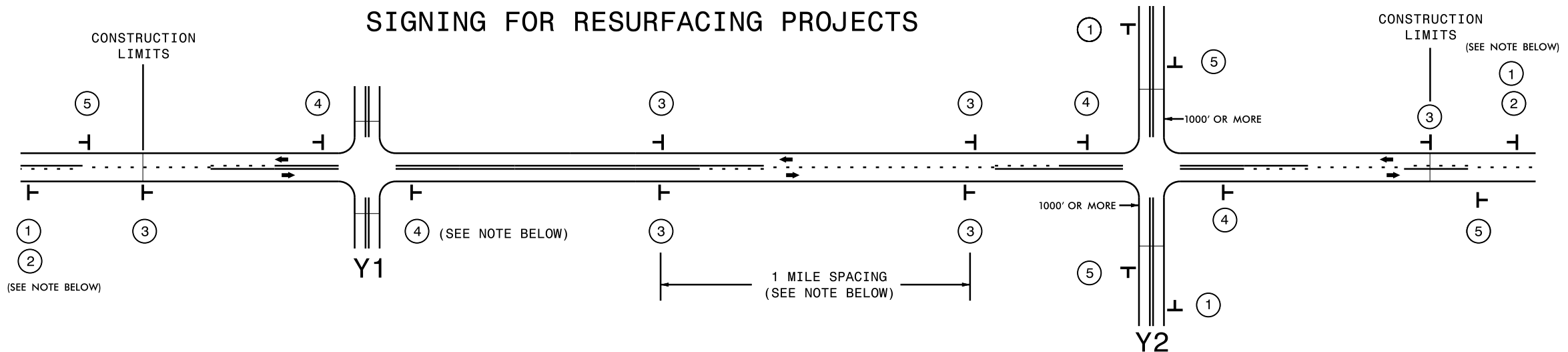
LEGEND	
T	STATIONARY SIGN
➔	DIRECTION OF TRAFFIC FLOW



**RESURFACING ADVANCE  
WARNING SIGNS FOR  
URBAN / SUBURBAN  
FACILITIES**



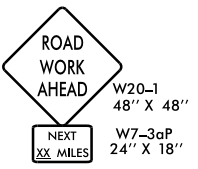




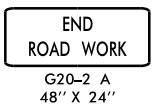
## SIGNING FOR RESURFACING PROJECTS



LEGEND	
T	STATIONARY SIGN
←	DIRECTION OF TRAFFIC FLOW

### MAINLINE (-L-) SIGNING

### -Y- LINE SIGNING

SIGNING NOTES AND PLACEMENT PER DIRECTION		
<div style="display: flex; flex-direction: column; align-items: center;"> <div style="border: 1px solid black; padding: 2px; margin-bottom: 5px;">1</div> <div style="border: 1px solid black; padding: 2px; margin-bottom: 5px;">2</div> </div>	 <p>PLACE 1000' PRIOR TO BEGINNING OF CONSTRUCTION LIMITS. ONLY USED ON -Y- LINES IF RESURFACING LIMITS EXTEND 1000' ALONG -Y- LINE.</p> <p>#2 SIGN ONLY USED WHEN RESURFACING LIMITS ARE 2 OR MORE MILES IN LENGTH. ROUND UP TO NEXT WHOLE NUMBER. (NO FRACTIONAL OR DECIMAL NUMBERS)</p>	<p>NO REQUIRED STATIONARY SIGNING FOR THE FOLLOWING -Y- LINE CONDITIONS:</p> <ol style="list-style-type: none"> <li>1) LESS THAN 1000' OF RESURFACING ALONG -Y- LINE</li> <li>2) SUBDIVISION ROADS</li> <li>3) DEAD END ROADS</li> </ol> <p>WHEN PAVING/CONSTRUCTION ACTIVITIES PROCEED ACROSS AN UNSIGNED -Y- LINE, ADVANCE WARNING PORTABLE SIGNS SHALL BE USED ALONG THE -Y- LINE AS SHOWN BELOW. REMOVE UPON COMPLETION OF WORK.</p> <div style="display: flex; justify-content: space-around; align-items: center; margin: 10px 0;">   </div> <p>PLACED 500' IN ADVANCE OF FLAGGER. PLACED 250' IN ADVANCE OF FLAGGER.</p>
3	 <p>PLACE INITIALLY AT THE CONSTRUCTION LIMITS AND SPACED 1 MILE APART THEREAFTER. IF NO -Y- LINES EXIST, PLACE 2ND SET 1/2 MILE FROM THE CONSTRUCTION LIMITS AND THEN SPACE 1 MILE THEREAFTER.</p>	
4	 <p>THESE ARE FOR -Y- LINES THAT ARE "THROUGH" ROADWAYS. DEAD END AND SUBDIVISION ROADS ARE NOT "THROUGH" ROADWAYS. INSTALL 500' +/- FROM EACH -Y- LINE APPROACH AS SHOWN ABOVE. FOR MULTIPLE -Y- LINES THAT ARE SEPARATED BY 0.25 MILES OR LESS, TREAT AS A SINGLE UNIT AND INSTALL WITHIN 500' OF EACH APPROACH. A MAXIMUM OF 2 SIGN SETS PER MILE. DO NOT INSTALL WHEN -Y- LINES ARE WITHIN 0.5 MILES FROM "END ROAD WORK" SIGN.</p>	
5	 <p>PLACE 500' FOLLOWING THE END OF CONSTRUCTION LIMITS.</p>	

09-FEB-2015 07:52  
 C:\cadd\2649\1\Drawings\19\Resurfacing\Comden\Comden\Plans\Resurfacing\_AdvWarn\_2Ln.dgn  
 dtatum AT 01/02/2021



**RESURFACING  
 ADVANCE WARNING SIGNS  
 FOR  
 RURAL AND SUBURBAN  
 2 LANE ROADWAYS**

PROJECT NO.	SHEET NO.	TOTAL NO.
1CR.10151.19, ETC	18	18

## SUMMARY OF QUANTITIES

PROJECT NO	COUNTY	MAP NO	ROUTE	DESCRIPTION	TYP	LANES	LANE TYPE	FINAL SURFACE TESTING REQUIRED	WARM MIX ASPHALT REQUIRED	LENGTH MI	WIDTH FT	MOBILIZATION LS	INCIDENTAL STONE BASE TONS	1 1/2" MILLING SY	SURFACE COURSE, S9.5B TONS	SURFACE COURSE, SF9.5A TONS	SURFACE COURSE, S4.75A TONS	ASPHALT BINDER FOR PLANT MIX TONS	ADJ. OF METER OR VALVE BOX EA	TEMPORARY TRAFFIC CONTROL LS	4" X 90 M WHTIE THERMO LF	4" X 120 M YELLOW THERMO LF
1CR.10151.19	Camden	1	US 158	EASTBOUND RIGHT LANE AND SHOULDER	1	4	MU	NO	NO	0.188	16	1		1,765	164			10		1	1250	
1CR.10151.19	Camden	2	US 158	EASTBOUND RIGHT LANE AND SHOULDER	2	4	MU	NO	NO	0.05	16	*		479	45			3		*	336	
1CR.10151.19	Camden	3	US 158	EASTBOUND LEFT LANE	3	4	MU	NO	NO	0.053	12	*		373	35			2		*	350	350
1CR.10151.19	Camden	4	US 158	WEST BOUND RIGHT LANE AND SHOULDER	4	4	MU	NO	NO	0.031	16	*		282	26			2		*	200	
1CR.20151.51	Camden	5	SR 1100 TEXAS ROAD	FROM BROADCREEK ROAD TO DEAD END	5	2	2WU	NO	NO	0.89	18	*				715		48		*		
1CR.20151.52	Camden	6	SR 1101 ONE MILL	FROM SR 1100 TO SR 1102	5	2	2WU	NO	NO	0.61	16	*	11			436		29		*		
1CR.20151.53	Camden	7	SR 1102 THOMAS POINT	FROM SR 1101 TO DEAD END	5	2	2WU	NO	NO	0.91	20	*	10			812		54		*		
1CR.20151.54	Camden	8	SR 1100	FROM SR 1103 TO SR 1101	5	2	2WU	NO	NO	0.69	18	*	15			554		37		*		
1CR.20151.55	Camden	9	SR 1172 VINEYARD DR	FROM SR 1152 TO SR 1166	5	2	2WU	NO	NO	0.16	18	*	2			154		10	1	*		
1CR.20151.56	Camden	10	SR 1151 DOGWOOD	FROM SR 1131 TO SR 1170	5	2	2WU	NO	NO	0.25	18	*	2			241		16	1	*		
1CR.20151.57	Camden	11	SR 1169 HOLLY DR	FROM SR 1170 TO SR 1131	5	2	2WU	NO	NO	0.26	18	*	2			251		17	1	*		
1CR.20151.58	Camden	12	SR 1170 WISTERIA	FROM SR 1150 TO SR 1169	5	2	2WU	NO	NO	0.12	18	*	5			116		8	1	*		
1CR.20151.59	Camden	13	SR 1150 PINEYWOOD DR	FROM SR 1131 TO SR 1170	5	2	2WU	NO	NO	0.23	18	*	2			222		15		*		
1CR.20151.60	Camden	14	SR 1205 SHIPYARD ROAD	FROM NC 343 TO STATION 13+43	6	2	2WU	NO	NO	0.26	20	*	3			243		16		*		
1CR.20151.61	Camden	15	SR 1115 GARRINGTON ISLAND RD	FROM SR 1107 TO CUL-DE-SAC	6	2	2WU	NO	NO	1.1	17	*	15			884		59		*		
1SP.20155.1	Camden	16	SR 1257 HAVENWOOD DR	FROM US 158 TO CUL-DE-SAC	7	2	2WU	NO	NO	0.2	18	*	2				92	6		*		
1SP.20155.2	Camden	17	SR 1149 TREASURE POINT RD	FROM SR 1130 TO SR 1130	7	2	2WU	NO	NO	0.27	18	*	10				124	8		*		
1SP.20155.3	Camden	18	SR 1130 TREASURE POINT ROAD	FROM SR 1132 TO SR 1149	7	2	2WU	NO	NO	0.23	17	*	10				100	7		*		
1SP.20155.4	Camden	19	SR 1164 B STREET	FROM SR 1149 TO DEAD END	7	2	2WU	NO	NO	0.05	15	*					19	1		*		
1SP.20155.5	Camden	20	SR 1154 HOWARD ST	FROM SR 1139 TO SR 1140	7	2	2WU	NO	NO	0.2	18	*	2				92	6		*		
1SP.20155.6	Camden	21	SR 1160 ROBERT DR/WILLIS ST	FROM SR 1154 TO SR 1140	7	2	2WU	NO	NO	0.3	17	*	5				130	9		*		
1SP.20155.7	Camden	22	SR 1246 PUBL0 RD	FROM SR 1217 TO DEAD END	7	2	2WU	NO	NO	0.3	16	*	10				122	8		*		
1SP.20155.8	Camden	23	SR1250 SWINSON RD	FROM SR 1217 TO DEAD END	7	2	2WU	NO	NO	0.22	18	*	4				101	7		*		
1SP.20155.9	Camden	24	SR 1222 MCCOY ROAD	FROM NC 343 TO DEAD END	7	2	2WU	NO	NO	0.25	19	*	6				121	8		*		
<b>GRAND TOTAL</b>										<b>7.82</b>		<b>1</b>	<b>116</b>	<b>2,899</b>	<b>270</b>	<b>4,628</b>	<b>901</b>	<b>386</b>	<b>3</b>	<b>1</b>	<b>2,136</b>	<b>350</b>