

09/08/09

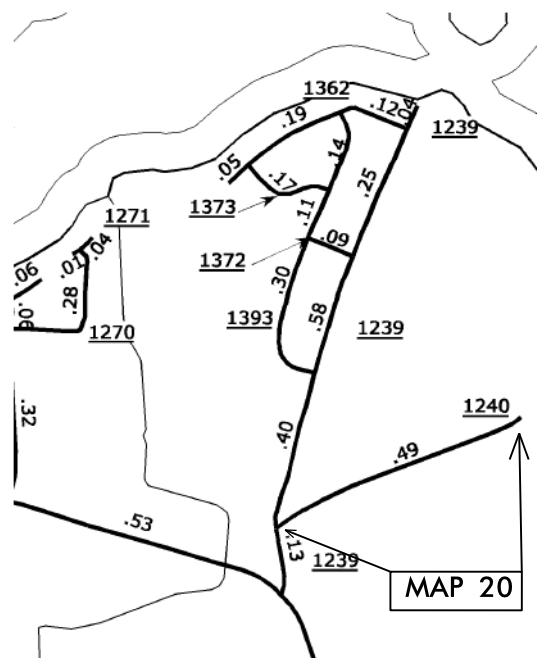
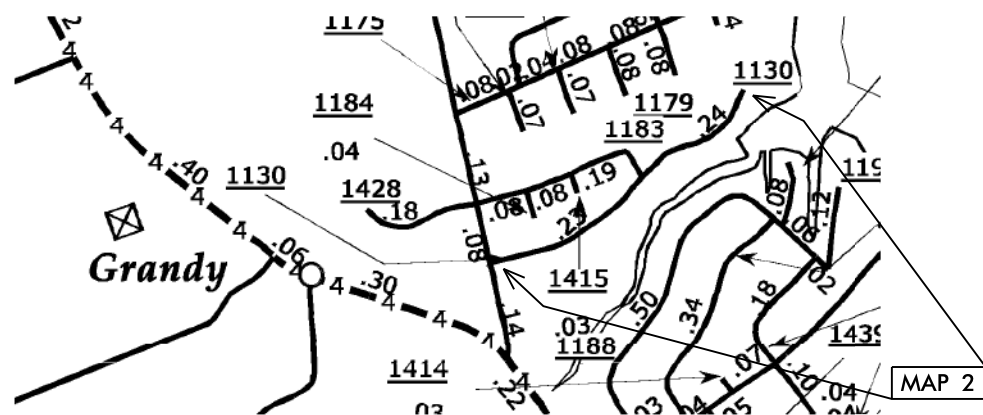
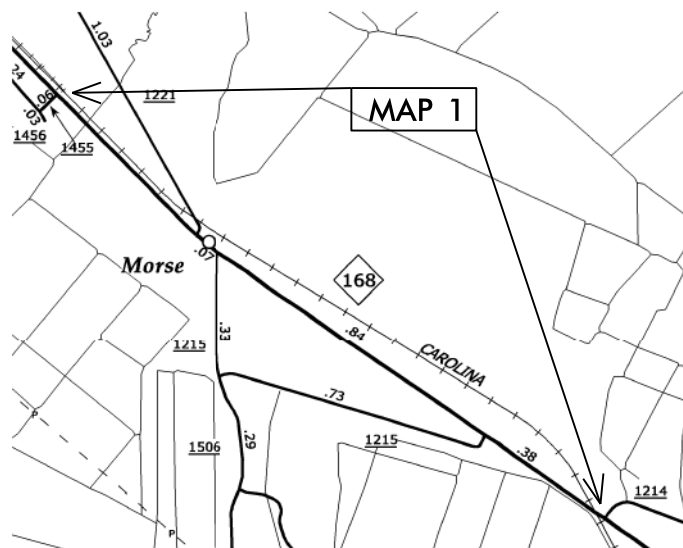
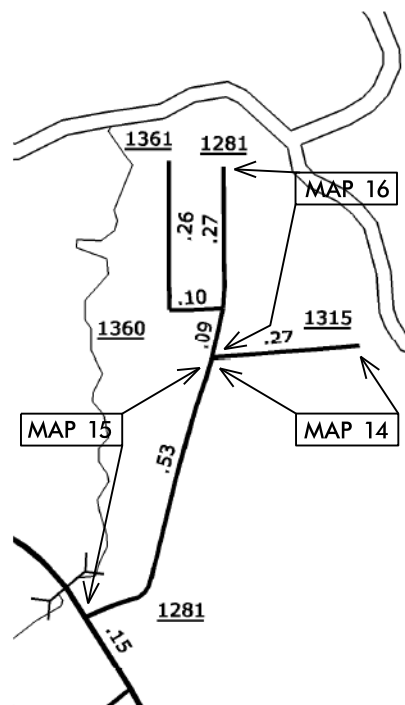
CONTRACT NO.: DA00225 WBS ELEMENT: ICR.10271.5, ETC.

STATE OF NORTH CAROLINA
DIVISION OF HIGHWAYS

CURRITUCK COUNTY

STATE	STATE PROJECT REFERENCE NO.	SHEET NO.	TOTAL SHEETS
N.C.	1CR.10271.5, ETC	1	10
STATE PROJ. NO.	F.A. PROJ. NO.	DESCRIPTION	
1CR.10271.5		MAP 1	
1CR.20271.111		MAP 2	
1SP.20275.12		MAP 14	
1SP.20275.13		MAP 15	
1SP.20275.14		MAP 16	
1SP.20275.18		MAP 20	

TYPE OF WORK: MILLING, RESURFACING & PAVEMENT MARKINGS



LOCATION:

MAP 1 NC 168 CARATOKE HWY. FROM SR 1455 TO SR 1214
 MAP 2 SR 1130 DOWDY'S BAY RD. FROM SR 1131 TO DEAD END
 MAP 14 SR 1315 CREEK DR. FROM SR 1281 TO CUL-DE-SAC
 MAP 15 SR 1281 BEECHWOOD SHORES DR. FROM US 168 TO SR 1315 /CURB AND GUTTER
 MAP 16 SR 1281 BEECHWOOD SHORES DR. FROM 1315 C&G TO CUL-DE-SAC
 MAP 20 SR 1240 TICE RD. FROM SR 1239 TO END OF MAINTENANCE

NTS

PROJECT LENGTH
LENGTH OF ROADWAY PROJECT MAP 1 = 1.80 MI.
LENGTH OF ROADWAY PROJECT MAP 2 = 0.47 MI.
LENGTH OF ROADWAY PROJECT MAP 14 = 0.26 MI.
LENGTH OF ROADWAY PROJECT MAP 15 = 0.50 MI.
LENGTH OF ROADWAY PROJECT MAP 16 = 0.37 MI.
LENGTH OF ROADWAY PROJECT MAP 20 = 0.49 MI.

Prepared in the Office of:
DIVISION OF HIGHWAYS
 113 Airport Dr., Edenton NC, 27932

2012 STANDARD SPECIFICATIONS

LETTING DATE: _____

W. B. HOBBS, P.E.
 DIVISION PROJECT MANAGER

C. E. SLACHTA
 DIVISION PROPOSALS ENGINEER

DIVISION OF HIGHWAYS
 STATE OF NORTH CAROLINA

CONTRACT NO.: DA00225 WBS ELEMENT: ICR.10271.5, ETC.

NTS

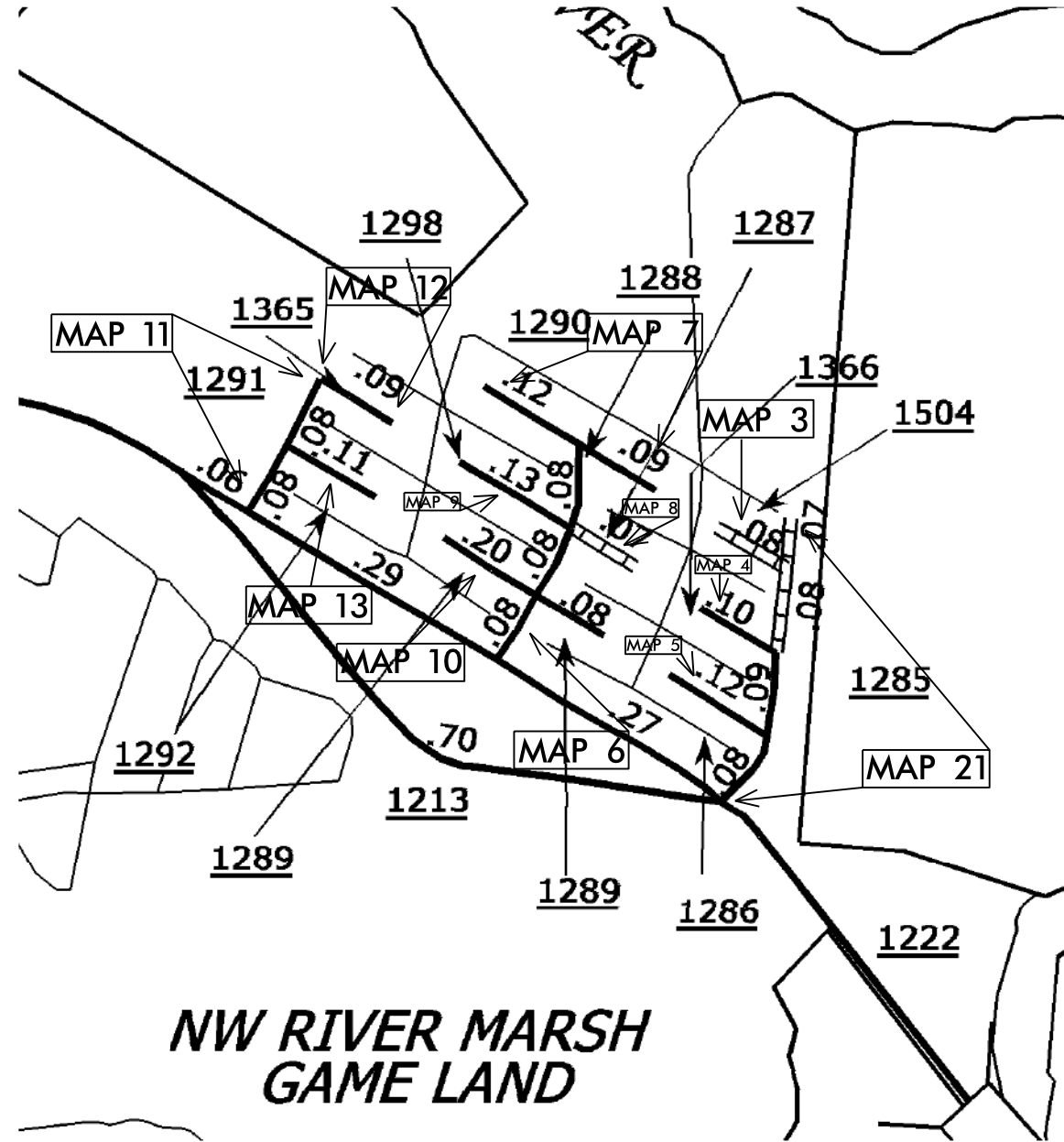
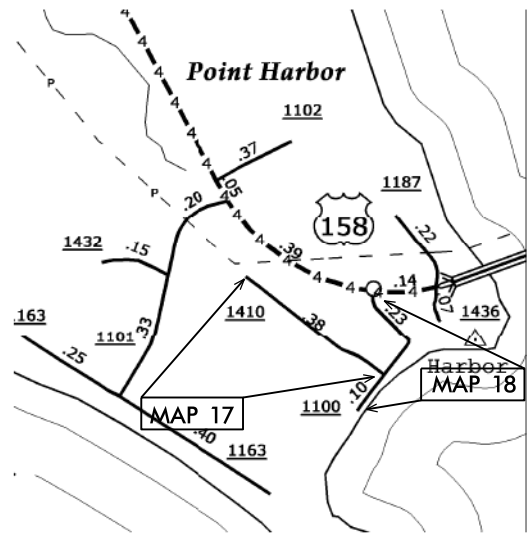
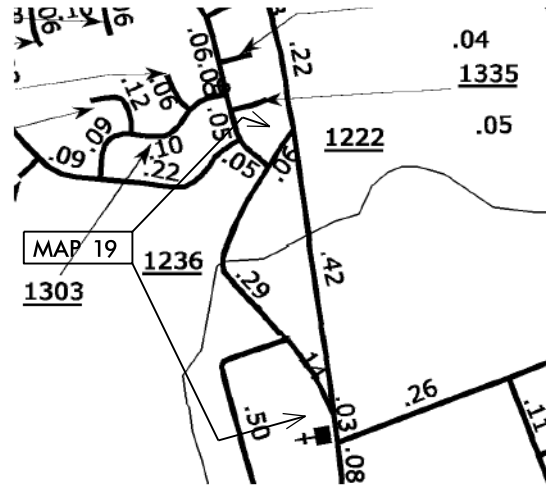
STATE OF NORTH CAROLINA
DIVISION OF HIGHWAYS

CURRITUCK COUNTY

TYPE OF WORK: MILLING, RESURFACING & PAVEMENT MARKINGS

STATE	STATE PROJECT REFERENCE NO.	SHEET NO.	TOTAL SHEETS
N.C.	1CR.10271.5, ETC	2	10

STATE PROJ. NO.	F.A. PROJ. NO.	DESCRIPTION
ISP.20275.1		MAP 3
ISP.20275.2		MAP 4
ISP.20275.3		MAP 5
ISP.20275.4		MAP 6
ISP.20275.5		MAP 7
ISP.20275.6		MAP 8
ISP.20275.7		MAP 9
ISP.20275.8		MAP 10
ISP.20275.9		MAP 11
ISP.20275.10		MAP 12
ISP.20275.11		MAP 13
ISP.20275.15		MAP 17
ISP.20275.16		MAP 18
ISP.20275.17		MAP 19
ISP.20275.19		MAP 21



LOCATION:

- MAP 3 SR 1366 TROUT RD. FROM SR 1285 TO CUL-DE-SAC
- MAP 4 SR 1286 BASS ST. FROM SR 1285 TO CUL-DE-SAC
- MAP 5 SR 1286 COBIA ST. FROM SR 1285 TO CUL-DE-SAC
- MAP 6 SR 1288 MARLIN ST. FROM SR 1222 TO SR 1290
- MAP 7 SR 1290 BARRACUDA ST./DRUM ST. FROM CUL-DE-SAC TO CUL-DE-SAC
- MAP 8 SR 1504 PERCH ST. FROM SR 1288 TO CUL-DE-SAC
- MAP 9 SR 1298 CROAKER ST FROM SR 1288 TO CUL-DE-SAC
- MAP 10 SR 1289 PIKE ST./FLOUNDER ST. FROM CUL-DE-SAC TO CUL-DE-SAC
- MAP 11 SR 1291 SAILFISH ST. FROM SR 1222 TO DEAD END
- MAP 12 SR 1365 SHARK ST. FROM SR 1291 TO CUL-DE-SAC
- MAP 13 SR 1292 PORPOISE ST. FROM SR 1291 TO CUL-DE-SAC
- MAP 17 SR 1410 ACORN LN. FROM SR 1100 TO CUL-DE-SAC
- MAP 18 SR 1100 S ALBETUCK RD. FROM US 158 TO DEAD END
- MAP 19 SR 1236 BAXTER GROVE FROM SR 1222 TO SR 1222
- MAP 21 SR 1285 DOLPHIN ST. FROM SR 1222 TO DEAD END

PROJECT LENGTH

LENGTH OF ROADWAY PROJECT MAP 3	= 0.10 MI.
LENGTH OF ROADWAY PROJECT MAP 4	= 0.11 MI.
LENGTH OF ROADWAY PROJECT MAP 5	= 0.13 MI.
LENGTH OF ROADWAY PROJECT MAP 6	= 0.23 MI.
LENGTH OF ROADWAY PROJECT MAP 7	= 0.25 MI.
LENGTH OF ROADWAY PROJECT MAP 8	= 0.08 MI.
LENGTH OF ROADWAY PROJECT MAP 9	= 0.15 MI.
LENGTH OF ROADWAY PROJECT MAP 10	= 0.22 MI.
LENGTH OF ROADWAY PROJECT MAP 11	= 0.17 MI.

LENGTH OF ROADWAY PROJECT MAP 12	= 0.10 MI.
LENGTH OF ROADWAY PROJECT MAP 13	= 0.12 MI.
LENGTH OF ROADWAY PROJECT MAP 17	= 0.39 MI.
LENGTH OF ROADWAY PROJECT MAP 18	= 0.30 MI.
LENGTH OF ROADWAY PROJECT MAP 19	= 0.42 MI.
LENGTH OF ROADWAY PROJECT MAP 21	= 0.30 MI.

Prepared in the Office of:
DIVISION OF HIGHWAYS
113 Airport Dr., Edenton NC, 27932

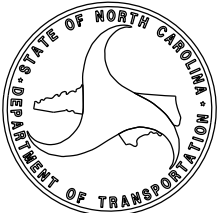
2012 STANDARD SPECIFICATIONS

LETTING DATE: _____

W.B. HOBBS, P.E.
DIVISION PROJECT MANAGER

C.E. SLACHTA
DIVISION PROPOSALS ENGINEER

DIVISION OF HIGHWAYS
STATE OF NORTH CAROLINA



C O N T R A C T P A V E M E N T S C H E D U L E

C1	PROP. APPROX. 1¼" ASPHALT CONCRETE SURFACE COURSE, TYPE SF9.5A, AT AN AVERAGE RATE OF 137.5 LBS. PER SQ. YD.
C2	PROP. APPROX. 1" ASPHALT CONCRETE SURFACE COURSE, TYPE S 4.75A, AT AN AVERAGE RATE OF 100 LBS. PER SQ. YD.
C3	PROP. APPROX. 1½" ASPHALT CONCRETE SURFACE COURSE, TYPE S 9.5B, AT AN AVERAGE RATE OF 168 LBS. PER SQ. YD.
U	EXISTING PAVEMENT
V	MILLED RUMBLE STRIPS

5/14/99
 06-FEB-2015 11:08
 I:\Projects\PAVING\2015\Curr\tuck\PLANS\CURR2015.dgn

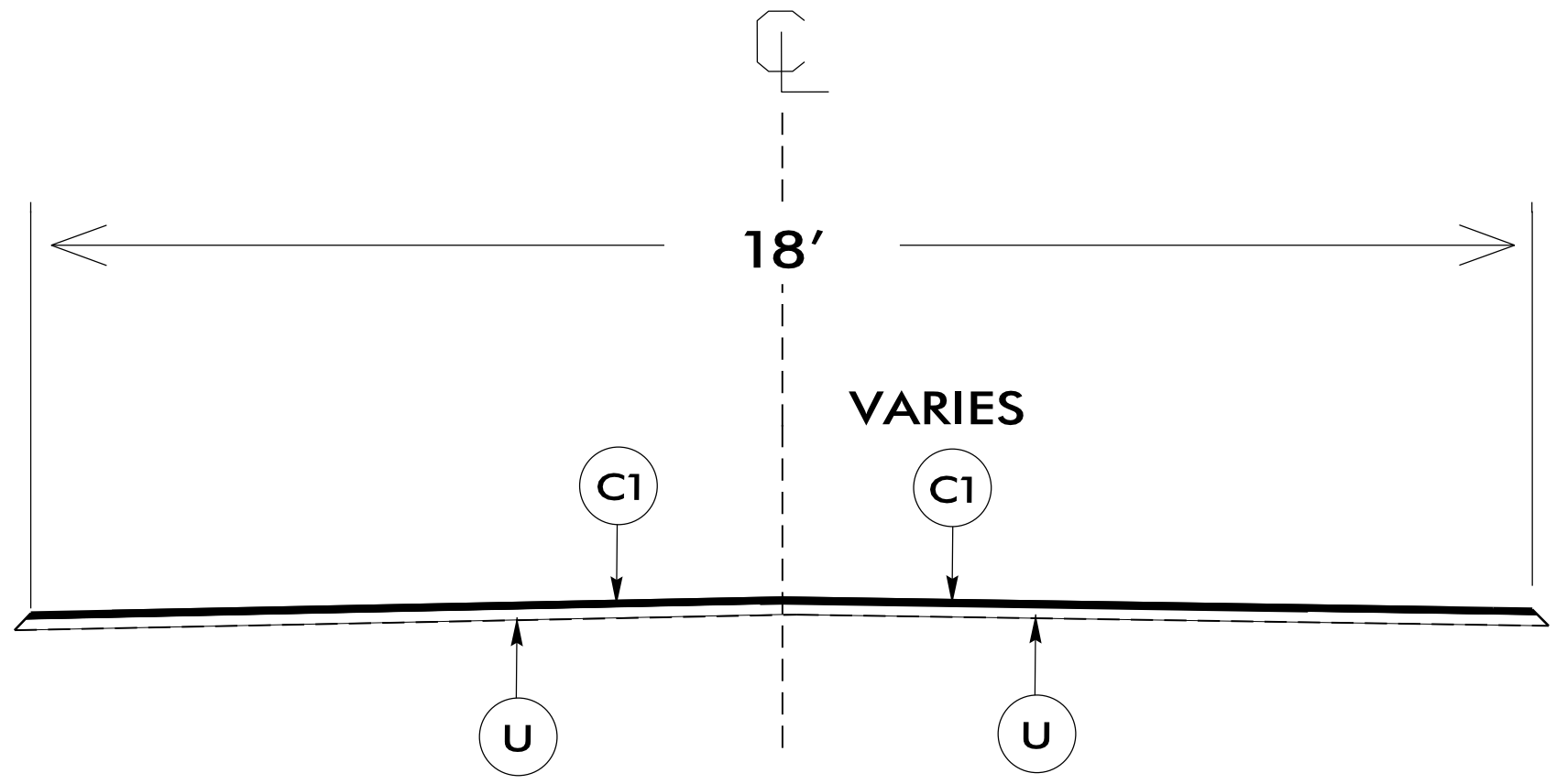
C1	PROP. APPROX. 1 1/4" ASPHALT CONCRETE SURFACE COURSE, TYPE SF9.5A AT AN AVERAGE RATE OF 137.5 LBS. PER SQ. YD.
U	EXISTING PAVEMENT

NOTES:

*ALL PAVED S.R. ROADS TO BE RESURFACED TO THE ENDS OF THE RADII, OR AS DIRECTED BY THE ENGINEER

*EDGES, PAVEMENT WIDENING, INTERSECTIONS, AND BRIDGE FLARES ARE INCLUDED IN THE TABLE OF QUANTITIES

*SHOULDERS TO BE RECONSTRUCTED BY OTHERS



TYPICAL SECTION NO.1

USE WITH MAPS 2

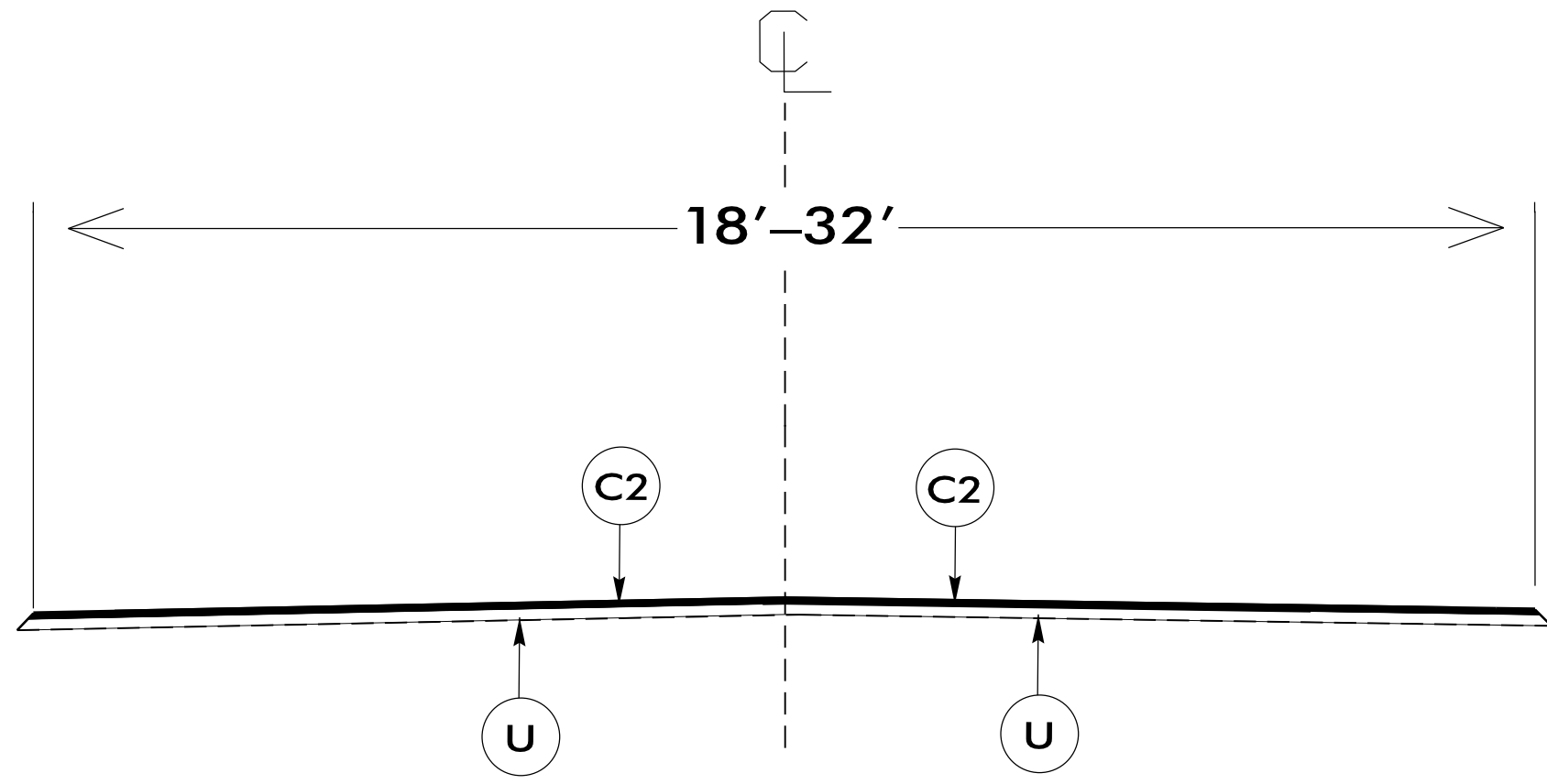
NTS

06-FEB-2015 11:08
 I:\Projects\10271.5\10271.5.dgn
 10271.5.dgn
 5/14/99

C2	PROP. APPROX. 1" ASPHALT CONCRETE SURFACE COURSE, TYPE S 4.75A AT AN AVERAGE RATE OF 100 LBS. PER SQ. YD.
U	EXISTING PAVEMENT

NOTES:

- *ALL PAVED S.R. ROADS TO BE RESURFACED TO THE ENDS OF THE RADII, OR AS DIRECTED BY THE ENGINEER
- *EDGES, PAVEMENT WIDENING, INTERSECTIONS, AND BRIDGE FLARES ARE INCLUDED IN THE TABLE OF QUANTITIES
- *SHOULDERS TO BE RECONSTRUCTED BY OTHERS



TYPICAL SECTION NO.2

USE WITH MAPS 3-21

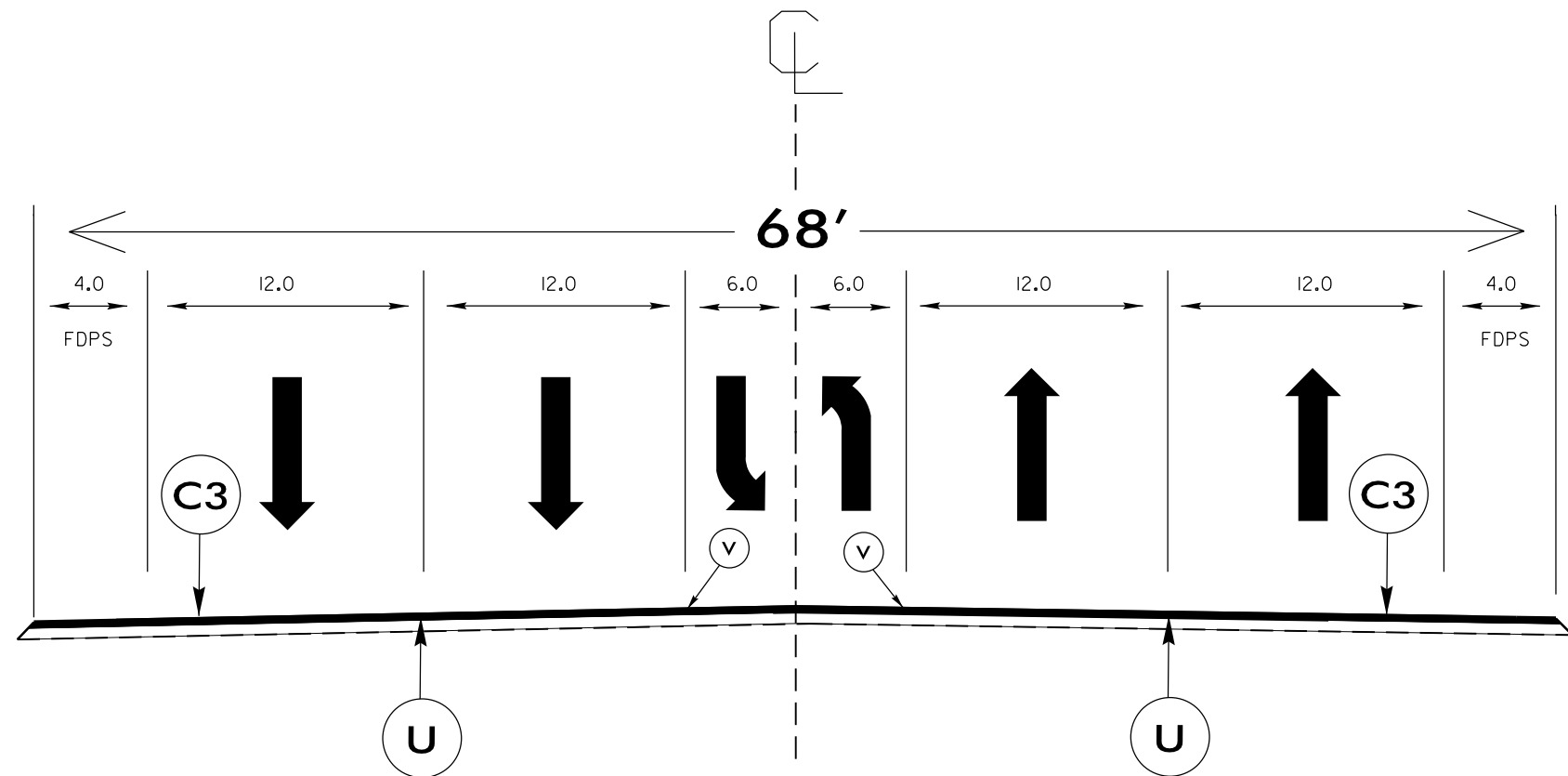
NTS

06-FEB-2015 11:10
 I:\projects\10271\10271.dwg
 10271.dwg
 5/14/99

C3	PROP. APPROX. 1½" ASPHALT CONCRETE SURFACE COURSE, TYPE S 9.5B AT AN AVERAGE RATE OF 168 LBS. PER SQ. YD.
U	EXISTING PAVEMENT
V	MILLED RUMBLE STRIPS

NOTES:

- *ALL PAVED S.R. ROADS TO BE RESURFACED TO THE ENDS OF THE RADII, OR AS DIRECTED BY THE ENGINEER
- *EDGES, PAVEMENT WIDENING, INTERSECTIONS, AND BRIDGE FLARES ARE INCLUDED IN THE TABLE OF QUANTITIES
- *SHOULDERS TO BE RECONSTRUCTED BY OTHERS
- * FDPS = FULL DEPTH PAVED SHOULDER



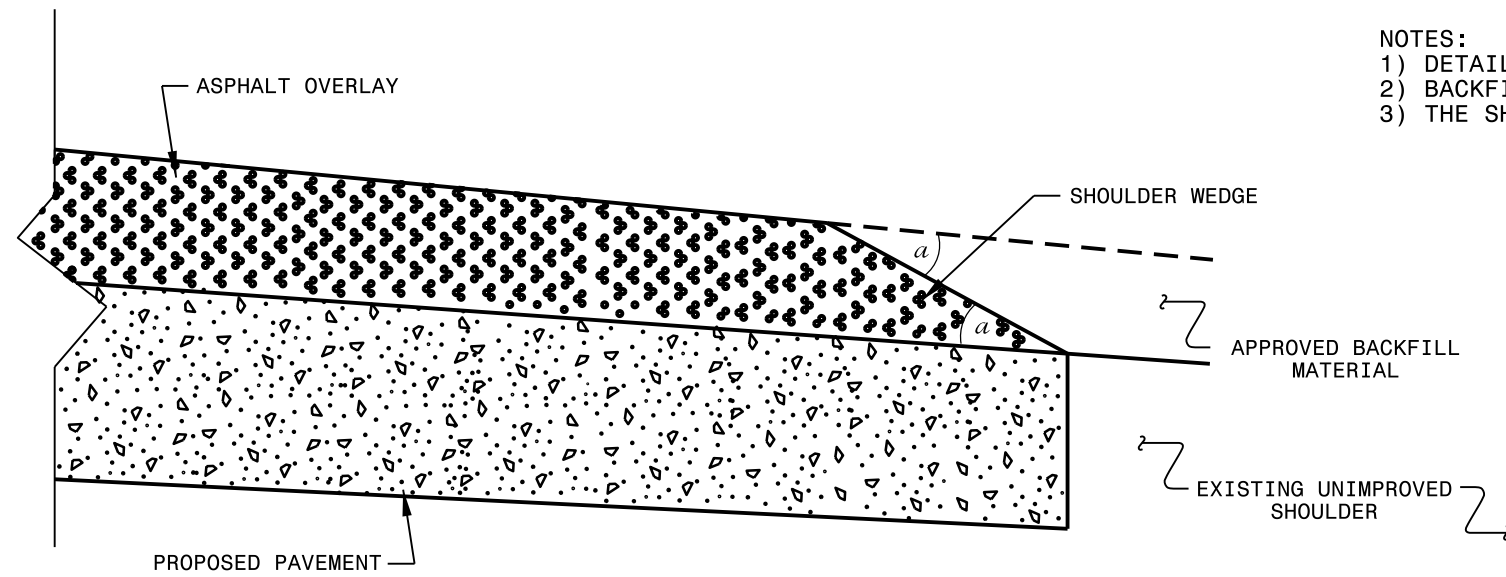
TYPICAL SECTION NO.3

USE WITH MAP 1

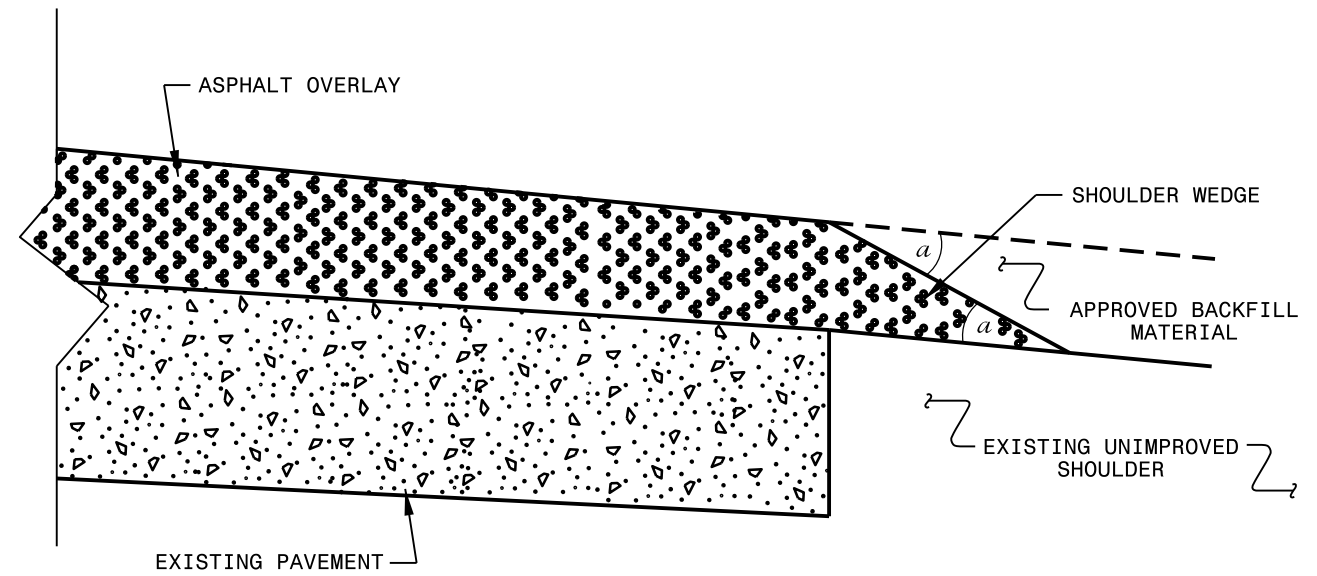
NTS

06-FEB-2015 11:10
 I:\projects\102715\102715.dgn
 5/14/99

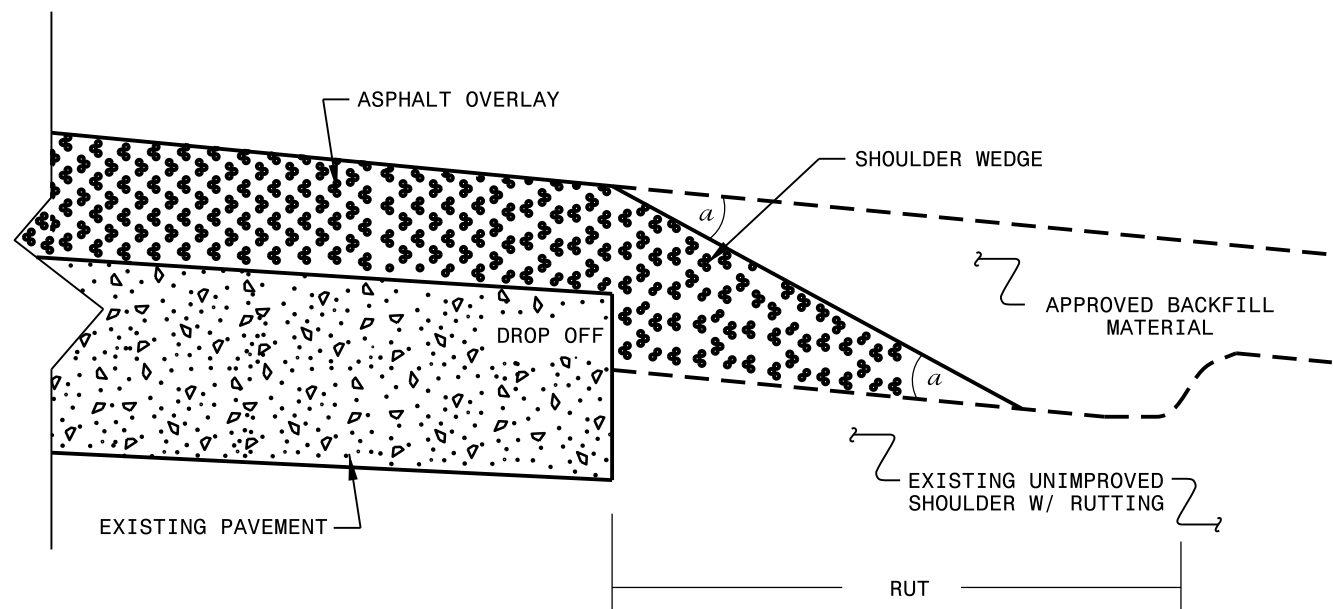
- NOTES:
- 1) DETAIL DOES NOT APPLY TO OGAFc AND ULTRA-THIN BONDED WEARING COURSE.
 - 2) BACKFILL SHOULDER WITH APPROVED MATERIAL.
 - 3) THE SHOULDER WEDGE DEVICE MAY BE DISENGAGED AT PAVED DRIVEWAYS AND SIDE STREETS.



SHOULDER WEDGE DETAIL
(Resurfacing Projects w/ Widening or
with Existing Paved Shoulder having no dropoffs)



SHOULDER WEDGE DETAIL
(Resurfacing Projects w/ NO Widening)



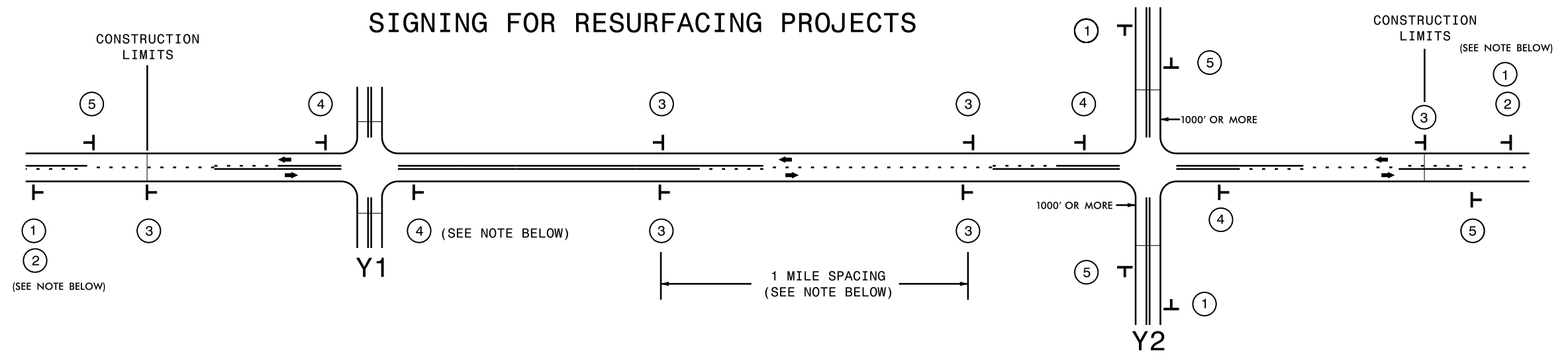
SHOULDER WEDGE DETAIL
(Resurfacing Adjacent to
Rutted Shoulder)

- SHOULDER WEDGE ANGLE = 30°

CONTRACT STANDARDS AND DEVELOPMENT UNIT	
Office 919-707-6950	FAX 919-250-4119
SHOULDER WEDGE DETAILS	
ORIGINAL BY: T.SPELL	DATE: 7-19-11
MODIFIED BY:	DATE: 10/16/12
CHECKED BY:	DATE:
FILE SPEC.: s:\usr\details\stand\shoulderwedgedetail.dgn	

06-FEB-2015 10:20
 C:\Users\jjeaddy\Documents\Projects\151215\Drawings\Shoulder Wedge Detail.dgn
 .jeaddy AT D:\CAD\265784

SIGNING FOR RESURFACING PROJECTS



LEGEND	
	STATIONARY SIGN
	DIRECTION OF TRAFFIC FLOW

MAINLINE (-L-) SIGNING

-Y- LINE SIGNING

SIGNING NOTES AND PLACEMENT PER DIRECTION	MAINLINE (-L-) SIGNING		-Y- LINE SIGNING		
	① ②	 	PLACE 1000' PRIOR TO BEGINNING OF CONSTRUCTION LIMITS. ONLY USED ON -Y- LINES IF RESURFACING LIMITS EXTEND 1000' ALONG -Y- LINE. #2 SIGN ONLY USED WHEN RESURFACING LIMITS ARE 2 OR MORE MILES IN LENGTH. ROUND UP TO NEXT WHOLE NUMBER. (NO FRACTIONAL OR DECIMAL NUMBERS)	NO REQUIRED STATIONARY SIGNING FOR THE FOLLOWING -Y- LINE CONDITIONS: 1) LESS THAN 1000' OF RESURFACING ALONG -Y- LINE 2) SUBDIVISION ROADS 3) DEAD END ROADS WHEN PAVING/CONSTRUCTION ACTIVITIES PROCEED ACROSS AN UNSIGNED -Y- LINE, ADVANCE WARNING PORTABLE SIGNS SHALL BE USED ALONG THE -Y- LINE AS SHOWN BELOW. REMOVE UPON COMPLETION OF WORK.	
	③		PLACE INITIALLY AT THE CONSTRUCTION LIMITS AND SPACED 1 MILE APART THEREAFTER. IF NO -Y- LINES EXIST, PLACE 2ND SET 1/2 MILE FROM THE CONSTRUCTION LIMITS AND THEN SPACE 1 MILE THEREAFTER.	 PLACED 500' IN ADVANCE OF FLAGGER. PLACED 250' IN ADVANCE OF FLAGGER.	
	④		THESE ARE FOR -Y- LINES THAT ARE "THROUGH" ROADWAYS. DEAD END AND SUBDIVISION ROADS ARE NOT "THROUGH" ROADWAYS. INSTALL 500' +/- FROM EACH -Y- LINE APPROACH AS SHOWN ABOVE. FOR MULTIPLE -Y- LINES THAT ARE SEPARATED BY 0.25 MILES OR LESS, TREAT AS A SINGLE UNIT AND INSTALL WITHIN 500' OF EACH APPROACH. A MAXIMUM OF 2 SIGN SETS PER MILE. DO NOT INSTALL WHEN -Y- LINES ARE WITHIN 0.5 MILES FROM "END ROAD WORK" SIGN.		
	⑤		PLACE 500' FOLLOWING THE END OF CONSTRUCTION LIMITS.		



**RESURFACING
 ADVANCE WARNING SIGNS
 FOR
 RURAL AND SUBURBAN
 2 LANE ROADWAYS**

PROJECT NO.	SHEET NO.	TOTAL NO.
1CR.10271.5, ETC.	9	9

SUMMARY OF QUANTITIES

PROJECT NO	COUNTY	MAP NO	ROUTE	DESCRIPTION	TYP NO	LANES	LANE TYPE	FINAL SURFACE TESTING REQUIRED	WARM MIX ASPHALT REQUIRED	LENGTH MI	WIDTH FT	MOBILIZATION LS	INCIDENTAL STONE BASE TONS	INCIDENTAL MILLING SY	SURFACE COURSE, S9.5B TONS	SURFACE COURSE, SF9.5A TONS	SURFACE COURSE, S4.75A TONS	ASPHALT BINDER FOR PLANT MIX TONS	MILLED RUMBLE STRIPS (ASPHALT CEMENT CONCRETE) LF
1CR.10271.5	Currituck	1	NC 168	FROM SR 1455 TO SR 1214	3	2	MU	NO	NO	1.80	68	1	20	1,500	6,779			407	22,470
1CR.20271.111	Currituck	2	SR 1130 DOWDY'S BAY	FROM SR 1131 TO DEAD END	1	2	2WU	NO	NO	0.47	18	*	32			378		25	
1SP.20275.1	Currituck	3	SR 1366 TROUT ST	FROM SR 1285 TO CUL-DE-SAC	2	2	2WU	NO	NO	0.10	20	*	2				51	3	
1SP.20275.2	Currituck	4	SR 1287 BASS ST	FROM SR 1285 TO CUL-DE-SAC	2	2	2WU	NO	NO	0.11	20	*	2				51	3	
1SP.20275.3	Currituck	5	SR 1286 COBIA ST	FROM SR 1285 TO CUL-DE-SAC	2	2	2WU	NO	NO	0.13	20	*	5				60	4	
1SP.20275.4	Currituck	6	SR 1288 MARLIN ST	FROM SR 1222 TO SR 1290	2	2	2WU	NO	NO	0.23	20	*	2				117	8	
1SP.20275.5	Currituck	7	SR 1290 BARRACUDA ST/DRUM ST	FROM CUL-DE-SAC TO CUL-DE -SAC	2	2	2WU	NO	NO	0.25	20	*	2				149	10	
1SP.20275.6	Currituck	8	SR 1504 PERCH ST	FROM SR 1288 TO CUL-DE-SAC	2	2	2WU	NO	NO	0.08	20	*	2				41	3	
1SP.20275.7	Currituck	9	SR 1298 CROAKER ST	FROM SR 1288 TO CUL-DE-SAC	2	2	2WU	NO	NO	0.15	20	*	2				76	5	
1SP.20275.8	Currituck	10	SR 1289 PIKE ST/FLOUNDER ST	FROM CUL-DE-SAC TO CUL-DE -SAC	2	2	2WU	NO	NO	0.22	20	*	4				134	9	
1SP.20275.9	Currituck	11	SR 1291 SAILFISH ST	FROM SR 1222 TO DEAD END	2	2	2WU	NO	NO	0.17	20	*	2				98	7	
1SP.20275.10	Currituck	12	SR 1365 SHARK ST	FROM SR 1291 TO CUL-DE-SAC	2	2	2WU	NO	NO	0.10	20	*	2				51	3	
1SP.20275.11	Currituck	13	SR 1292 PORPOISE ST	FROM SR 1291 TO CUL-DE-SAC	2	2	2WU	NO	NO	0.12	20	*	2				61	4	
1SP.20275.12	Currituck	14	SR 1315 CREEK DR	FROM SR 1281 TO CUL-DE-SAC	2	2	2WU	NO	NO	0.26	20	*	2				133	9	
1SP.20275.13	Currituck	15	SR 1281 BEECHWOOD SHORES DR	FROM US 168 TO SR 1315/CURB AND GUTTER	2	2	2WU	NO	NO	0.50	20	*	2				277	19	
1SP.20275.14	Currituck	16	SR 1281 BEECHWOOD SHORES DR	FROM 1315 C&G TO CUL-DE-SAC	2	2	2WU	NO	NO	0.37	32	*	2				301	20	
1SP.20275.15	Currituck	17	SR 1410 ACORN LANE	FROM SR 1100 TO CUL-DE-SAC	2	2	2WU	NO	NO	0.39	20	*	2				221	15	
1SP.20275.16	Currituck	18	SR 1100 S ALBETUCK RD	FROM US 158 TO DEAD END	2	2	2WU	NO	NO	0.30	19	*	2				167	11	
1SP.20275.17	Currituck	19	SR 1236 BAXTER GROVE	FROM SR 1222 TO SR 1222	2	2	2WU	NO	NO	0.42	20	*	15				214	15	
1SP.20275.18	Currituck	20	SR 1240 TICE RD	FROM SR 1239 TO END OF MAINTENANCE	2	2	2WU	NO	NO	0.49	18	*	10				236	16	
1SP.20275.19	Currituck	21	SR 1285 DOLPHIN ST	FROM SR 1222 TO DEAD END	2	2	2WU	NO	NO	0.30	21	*	2				161	11	
GRAND TOTAL										6.96		1	116	1,500	6,779	378	2,599	607	22,470

PROJECT NO.	SHEET NO.	TOTAL NO.
1CR.10271.5, ETC.	10	10

THERMOPLASTIC AND PAINT QUANTITIES

PROJECT NO	COUNTY	MAP NO	ROUTE	DESCRIPTION	TYP	LANES	LANE TYPE	LENGTH	WIDTH	TEMPORARY TRAFFIC CONTROL LS	6" X 90 M WHITE THERMO LF	6" X 120 M YELLOW THERMO LF	16" X 120 M WHITE THERMO LF	24" X 120 M WHITE THERMO LF	THERMO RXR 120 M EA	4" WHITE PAINT LF	4" YELLOW PAINT LF	24" WHITE PAINT LF	PAINT LT ARROW EA	PAINT STR ARROW EA	PAINT RT ARROW EA	CRYSTAL & RED MARKERS EA	YELLOW & YELLOW MARKERS EA
1CR.10271.5	Currituck	1	NC 168	FROM SR 1455 TO SR 1214	3	2	MU	1.80	68	1	28,000	27,000	100	204	4	28,000	27,000	300	70	16	5	516	276
1CR.20271.111	Currituck	2	SR 1130 DOWDY'S BAY	FROM SR 1131 TO DEAD END	1	2	2WU	0.47	18	*													
1SP.20275.1	Currituck	3	SR 1366 TROUT ST	FROM SR 1285 TO CUL-DE-SAC	2	2	2WU	0.10	20	*													
1SP.20275.2	Currituck	4	SR 1287 BASS ST	FROM SR 1285 TO CUL-DE-SAC	2	2	2WU	0.11	20	*													
1SP.20275.3	Currituck	5	SR 1286 COBIA ST	FROM SR 1285 TO CUL-DE-SAC	2	2	2WU	0.13	20	*													
1SP.20275.4	Currituck	6	SR 1288 MARLIN ST	FROM SR 1222 TO SR 1290	2	2	2WU	0.23	20	*													
1SP.20275.5	Currituck	7	SR 1290 BARRACUDA ST/DRUM ST	FROM CUL-DE-SAC TO CUL-DE-SAC	2	2	2WU	0.25	20	*													
1SP.20275.6	Currituck	8	SR 1504 PERCH ST	FROM SR 1288 TO CUL-DE-SAC	2	2	2WU	0.08	20	*													
1SP.20275.7	Currituck	9	SR 1298 CROAKER ST	FROM SR 1288 TO CUL-DE-SAC	2	2	2WU	0.15	20	*													
1SP.20275.8	Currituck	10	SR 1289 PIKE ST/FLOUNDER ST	FROM CUL-DE-SAC TO CUL-DE-SAC	2	2	2WU	0.22	20	*													
1SP.20275.9	Currituck	11	SR 1291 SAILFISH ST	FROM SR 1222 TO DEAD END	2	2	2WU	0.17	20	*													
1SP.20275.10	Currituck	12	SR 1365 SHARK ST	FROM SR 1291 TO CUL-DE-SAC	2	2	2WU	0.10	20	*													
1SP.20275.11	Currituck	13	SR 1292 PORPOISE ST	FROM SR 1291 TO CUL-DE-SAC	2	2	2WU	0.12	20	*													
1SP.20275.12	Currituck	14	SR 1315 CREEK DR	FROM SR 1281 TO CUL-DE-SAC	2	2	2WU	0.26	20	*													
1SP.20275.13	Currituck	15	SR 1281 BEECHWOOD SHORES DR	FROM US 168 TO SR 1315/CURB AND	2	2	2WU	0.50	20	*													
1SP.20275.14	Currituck	16	SR 1281 BEECHWOOD SHORES DR	FROM 1315 C&G TO CUL-DE-SAC	2	2	2WU	0.37	32	*													
1SP.20275.15	Currituck	17	SR 1410 ACORN LANE	FROM SR 1100 TO CUL-DE-SAC	2	2	2WU	0.39	20	*													
1SP.20275.16	Currituck	18	SR 1100 S ALBETUCK RD	FROM US 158 TO DEAD END	2	2	2WU	0.30	19	*													
1SP.20275.17	Currituck	19	SR 1236 BAXTER GROVE	FROM SR 1222 TO SR 1222	2	2	2WU	0.42	20	*													
1SP.20275.18	Currituck	20	SR 1240 TICE RD	FROM SR 1239 TO END OF MAINTENANCE	2	2	2WU	0.49	18	*													
1SP.20275.19	Currituck	21	SR 1285 DOLPHIN ST	FROM SR 1222 TO DEAD END	2	2	2WU	0.30	21	*													
GRAND TOTAL								6.96		1	28,000	27,000	100	204	4	28,000	27,000	300	70	16	5	516	276
																	55,000		91		792		