

28-SEP-2016 14:27  
 C:\User\jibconner\Documents\CURRENT PROJECTS\AST\2017-2018 AST\Pasquotank\DA00325\_psh.dgn  
 jibconner AT DICAD270263

**CONTRACT: DA00325 WBS PROJECT: 2017CPT.01.16.20702.1**

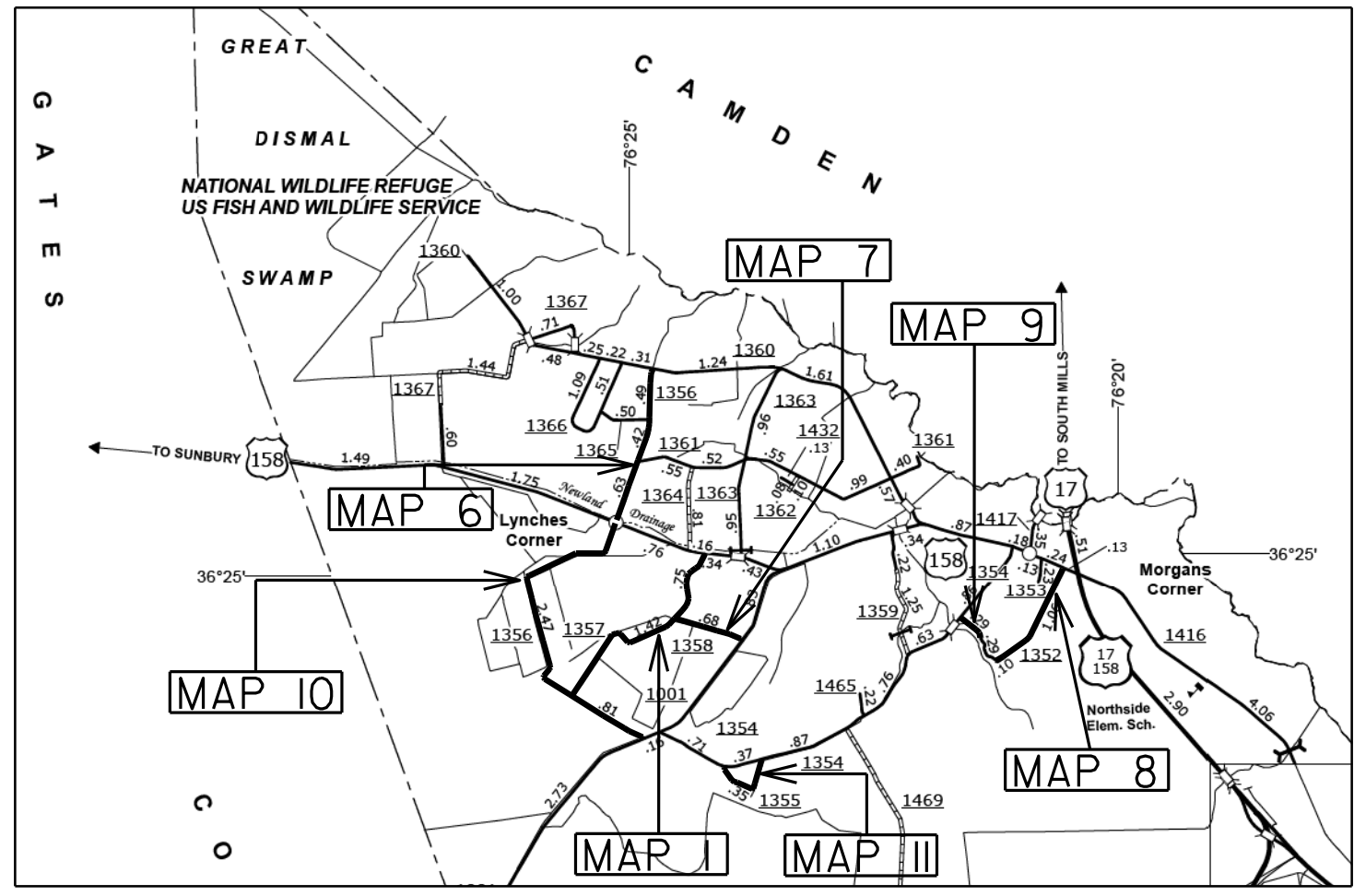
STATE OF NORTH CAROLINA  
 DIVISION OF HIGHWAYS

# PASQUOTANK COUNTY

**LOCATION: MAP #1 SR 1357 FROM US 158 TO SR 1356**  
**MAP #6 SR 1356 FROM US 158 TO SR 1360**  
**MAP #7 SR 1358 FROM SR 1001 TO SR 1357**  
**MAP #8 SR 1352 FROM US 158 TO END OF PAVEMENT**  
**MAP #9 SR 1352 FROM SR 1354 TO END OF PAVEMENT**  
**MAP #10 SR 1356 FROM US 158 TO SR 1001**  
**MAP #11 SR 1355 FROM SR 1354 TO SR 1354**

**TYPE OF WORK: ASPHALT SURFACE TREATMENT DOUBLE SEAL**

| STATE                 | STATE PROJECT REFERENCE NO. | SHEET NO.   | TOTAL SHEETS |
|-----------------------|-----------------------------|-------------|--------------|
| N.C.                  | 2017CPT.01.16.20702.1       | 1           |              |
| STATE PROJ. NO.       | F. A. PROJ. NO.             | DESCRIPTION |              |
| 2017CPT.01.16.20702.1 |                             | MAP 1       |              |
| 2017CPT.01.16.20702.1 |                             | MAP 6       |              |
| 2017CPT.01.16.20702.1 |                             | MAP 7       |              |
| 2017CPT.01.16.20702.1 |                             | MAP 8       |              |
| 2017CPT.01.16.20702.1 |                             | MAP 9       |              |
| 2017CPT.01.16.20702.1 |                             | MAP 10      |              |
| 2017CPT.01.16.20702.1 |                             | MAP 11      |              |

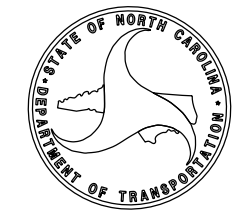


NTS

| PROJECT LENGTH                     |          |
|------------------------------------|----------|
| LENGTH OF ROADWAY PROJECT MAP 1 =  | 2.17 MI. |
| LENGTH OF ROADWAY PROJECT MAP 6 =  | 1.54 MI. |
| LENGTH OF ROADWAY PROJECT MAP 7 =  | 0.68 MI. |
| LENGTH OF ROADWAY PROJECT MAP 8 =  | 1.22 MI. |
| LENGTH OF ROADWAY PROJECT MAP 9 =  | 0.21 MI. |
| LENGTH OF ROADWAY PROJECT MAP 10 = | 3.30 MI. |
| LENGTH OF ROADWAY PROJECT MAP 11 = | 0.69 MI. |

Prepared in the Office of:  
**DIVISION OF HIGHWAYS**  
 113 Airport Dr., Edenton NC, 27932

| 2012 STANDARD SPECIFICATIONS | LETTING DATE:  |
|------------------------------|--|
|                              | <b>W.B. HOBBS, P.E.</b><br><small>DIVISION PROJECT MANAGER</small> |
|                              | <b>C.E. SLACHTA</b><br><small>DIVISION PROPOSALS ENGINEER</small>  |



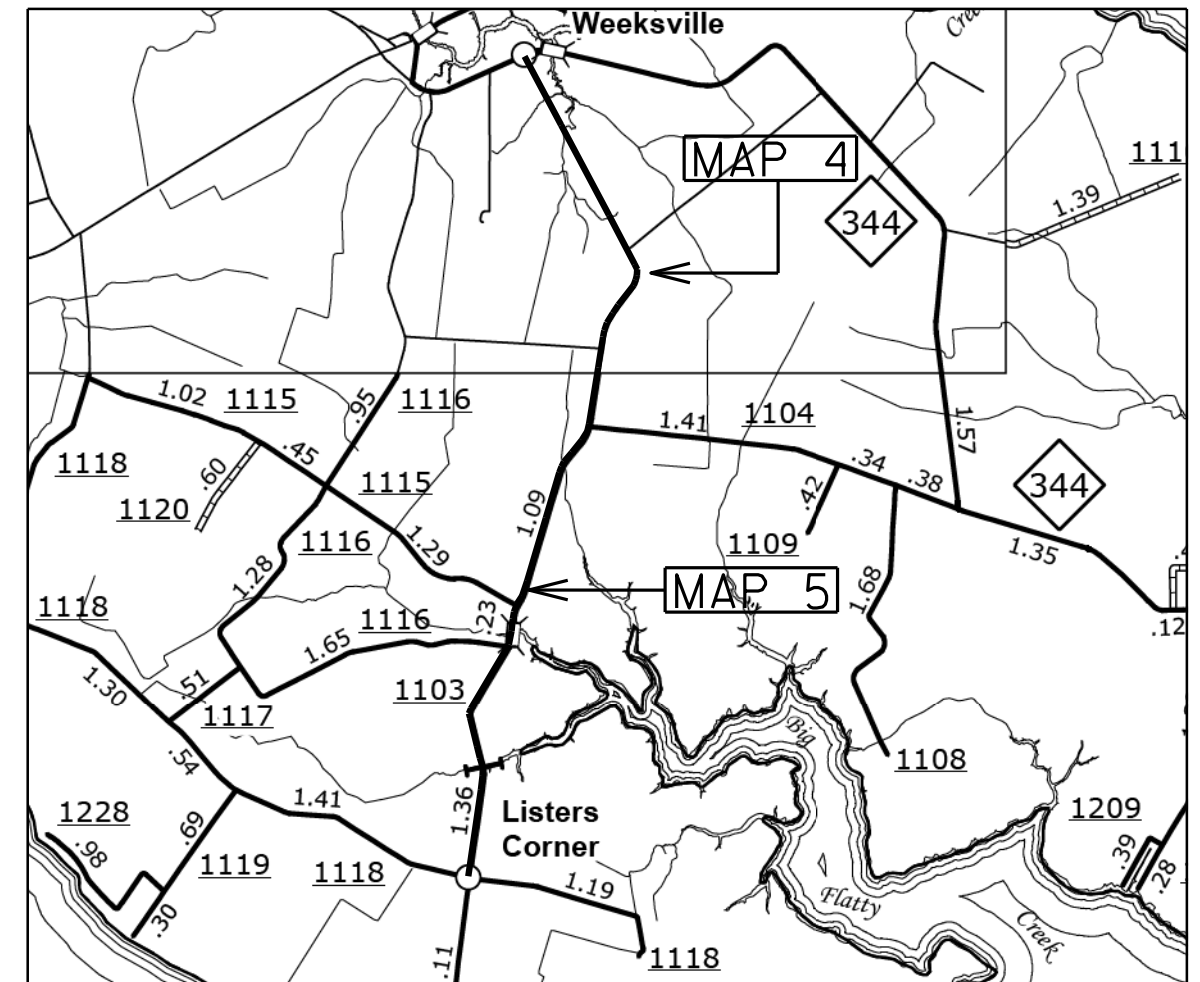
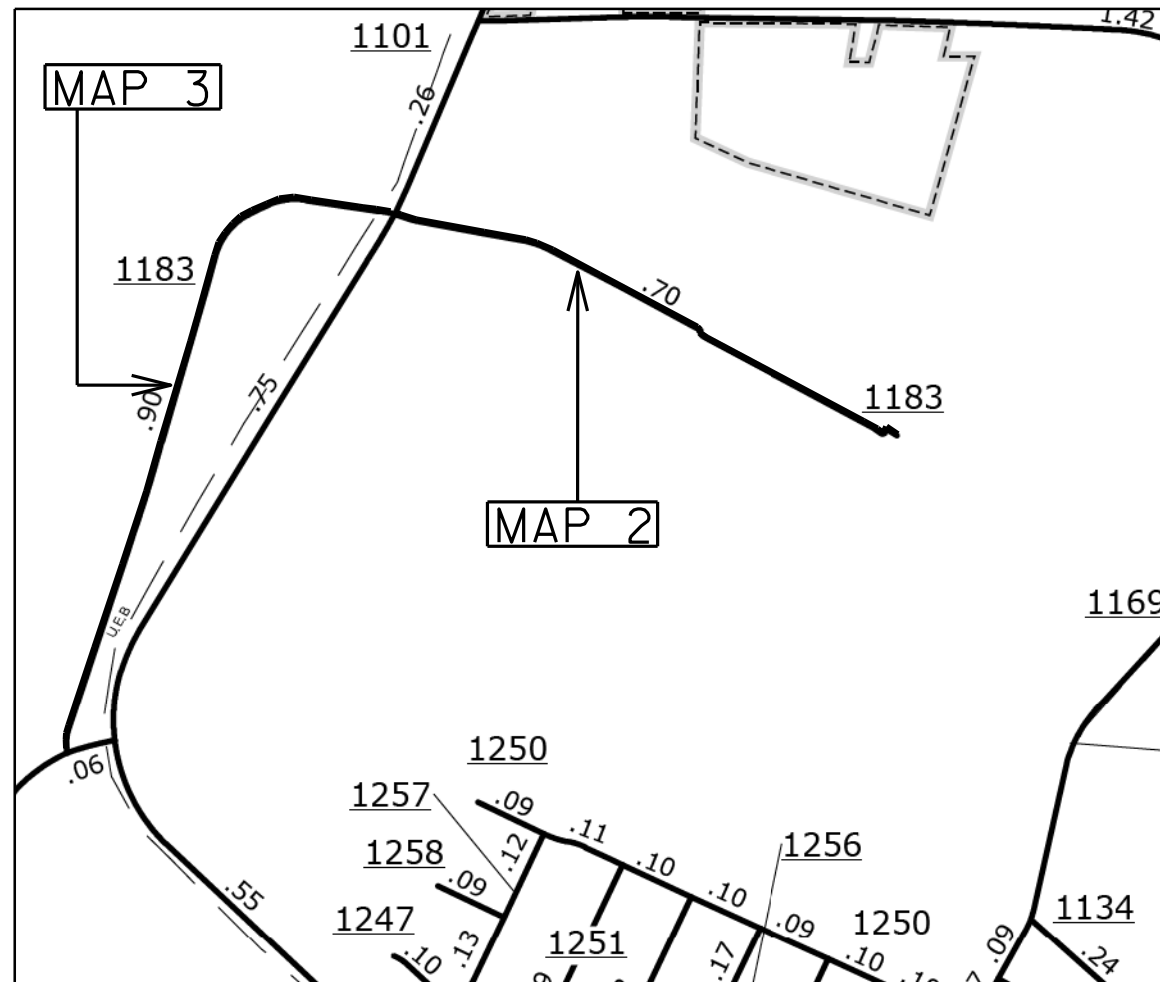
STATE OF NORTH CAROLINA  
 DIVISION OF HIGHWAYS

**PASQUOTANK COUNTY**

LOCATION: MAP #2 SR 1183 FROM SR 1001 TO DEAD END  
 MAP #3 SR 1183 FROM SR 1101 TO SR 1135  
 MAP #4 SR 1103 FROM NC 344 TO SR 1115  
 MAP #5 SR 1103 FROM SR 1115 TO SR 1118

TYPE OF WORK: ASPHALT SURFACE TREATMENT DOUBLE SEAL

| STATE                 | STATE PROJECT REFERENCE NO. | SHEET NO.   | TOTAL SHEETS |
|-----------------------|-----------------------------|-------------|--------------|
| N.C.                  | 2017CPT.01.16.20702.1       | 2           |              |
| STATE PROJ. NO.       | F.A. PROJ. NO.              | DESCRIPTION |              |
| 2017CPT.01.16.20702.1 |                             | MAP 2       |              |
| 2017CPT.01.16.20702.1 |                             | MAP 3       |              |
| 2017CPT.01.16.20702.1 |                             | MAP 4       |              |
| 2017CPT.01.16.20702.1 |                             | MAP 5       |              |



CONTRACT: DA00325 WBS PROJECT: 2017CPT.01.16.20702.1

28-SEP-2016 14:34 C:\User\jibconner\Documents\CURRENT PROJECTS\AST\2017-2018 AST\Pasquotank\DA00325\_psh.dgn AT DA0270263

**NTS**

PROJECT LENGTH

- LENGTH OF ROADWAY PROJECT MAP 2 = 0.72 MI.
- LENGTH OF ROADWAY PROJECT MAP 3 = 0.90 MI.
- LENGTH OF ROADWAY PROJECT MAP 4 = 3.37 MI.
- LENGTH OF ROADWAY PROJECT MAP 5 = 1.59 MI.

Prepared in the Office of:  
**DIVISION OF HIGHWAYS**

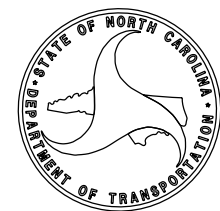
113 Airport Dr., Edenton NC, 27932

2012 STANDARD SPECIFICATIONS

LETTING DATE:

W.B. HOBBS, P.E.  
 DIVISION PROJECT MANAGER

C.E. SLACHTA  
 DIVISION PROPOSALS ENGINEER



P A V E M E N T S C H E D U L E

|    |  |
|----|--|
| C1 | PROP. ASPHALT SURFACE TREATMENT, DOUBLE SEAL, AT AN APPLICATION RATE TO BE DETERMINED BY FIELD CONDITIONS IN ACCORDANCE WITH PROJECT SPECIAL PROVISIONS. |
| U  | EXISTING PAVEMENT.   |

NOTES:

\*ALL PAVED S.R. ROADS TO BE TREATED TO THE ENDS OF THE RADII,  
OR AS DIRECTED BY THE ENGINEER

\*PAVEMENT MARKINGS TO BE PERFORMED BY OTHERS

\*ASPHALT SURFACE TREATMENT, DOUBLE SEAL CONSISTS OF TWO LAYERS OF TREATMENT:

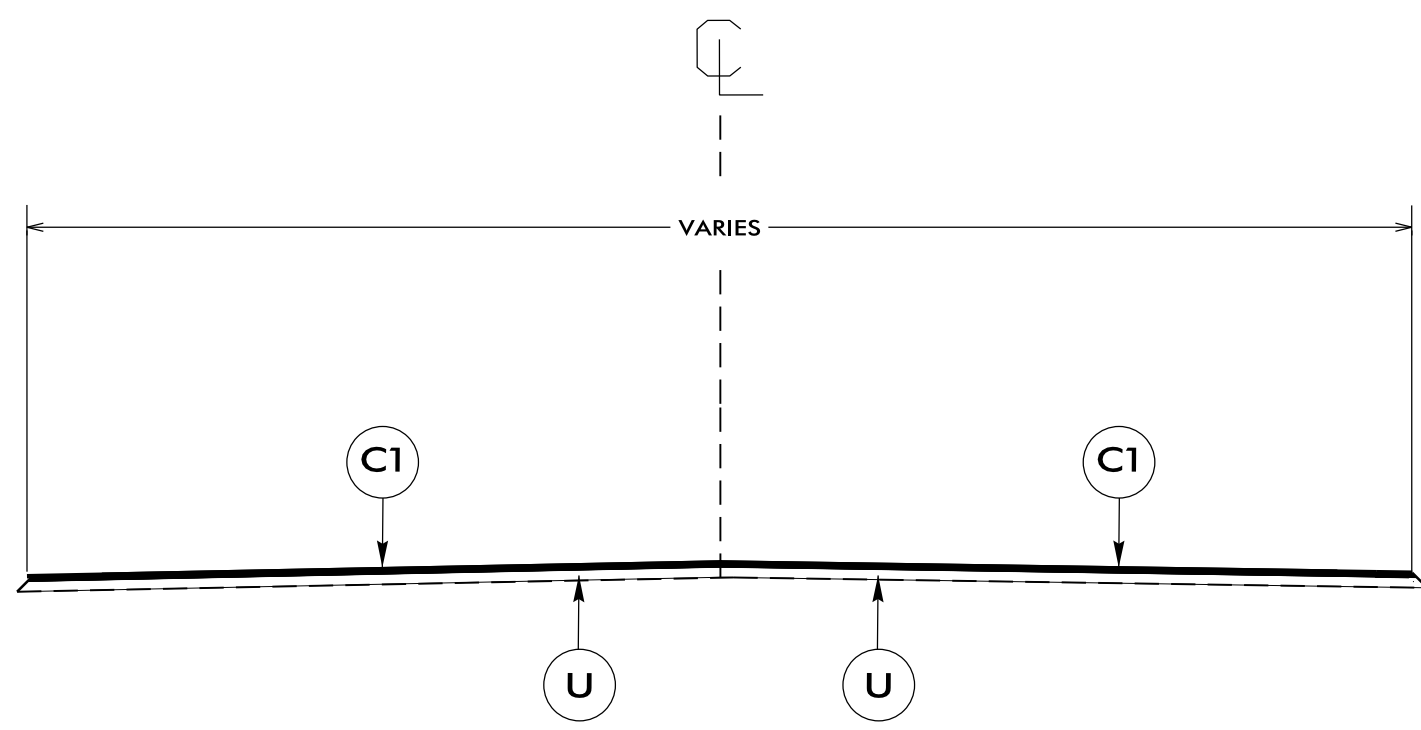
BOTTOM LAYER CONSISTS OF EMULSIFIED ASPHALT, GRADE CRS-2L AT A RATE OF APPROX  
0.30 ± GAL/SY AND A LAYER OF 7M AGGREGATE AT A RATE OF APPROX. 18 ± LBS/SY.

TOP LAYER CONSISTS OF EMULSIFIED ASPHALT, GRADE CRS-2L AT A RATE OF APPROX  
0.25 ± GAL/SY AND A LAYER OF 5/16" LIGHTWEIGHT AGGREGATE AT A RATE OF APPROX. 9 ± LBS/SY.

OR #9 AGGREGATE AT A RATE OF APPROX. 9± LBS/SY.

OR CA-9 LIGHTWEIGHT AGGREGATE AT A RATE OF APPROX. 9± LBS/SY.

\*CONTRACTOR SHALL BE RESPONSIBLE FOR LOADING, HAULING, AND PLACING ALL MATERIALS.



**TYPICAL SECTION NO. 1**

**USE WITH MAPS 1 THRU 11**

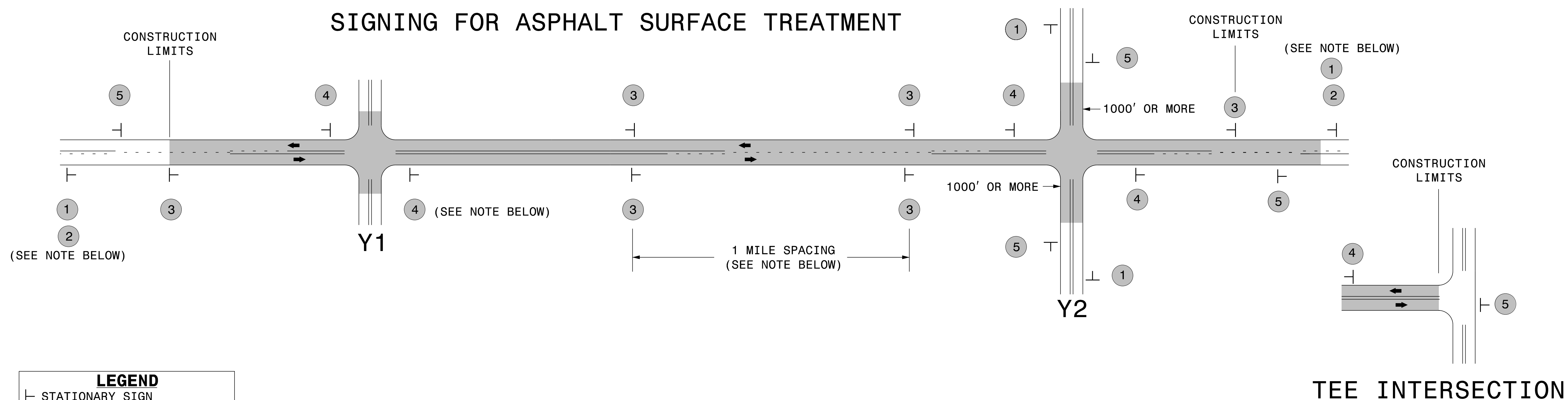
NTS

|                       |           |           |
|-----------------------|-----------|-----------|
| PROJECT NO.           | SHEET NO. | TOTAL NO. |
| 2017CPT.01.16.20702.1 | 4         |           |

## SUMMARY OF QUANTITIES

| PROJECT NO            | COUNTY     | MAP NO | ROUTE   | DESCRIPTION                     | TYP NO | LANES | LANE TYPE | LENGTH MI    | WIDTH FT | MOBILIZATION LS | ASPHALT SURFACE TREATMENT, DOUBLE SEAL SY | LATEX MODIFIED EMULSION FOR AST (CRS-2L) GAL | TEMP TRAFFIC CONTROL LS |
|-----------------------|------------|--------|---------|---------------------------------|--------|-------|-----------|--------------|----------|-----------------|---|--|-------------------------|
| 2017CPT.01.16.20702.1 | Pasquotank | 1      | SR 1357 | FROM US 158 TO SR 1356          | 1      | 2     | 2WU       | 2.17         | 18       | 1               | 23,715                                    | 13,043                                       | 1                       |
| 2017CPT.01.16.20702.1 | Pasquotank | 2      | SR 1183 | FROM SR 1101 TO DEAD END        | 1      | 2     | 2WU       | 0.72         | 18       | *               | 7,603                                     | 4,182  | *                       |
| 2017CPT.01.16.20702.1 | Pasquotank | 3      | SR 1183 | FROM SR 1101 TO SR 1135         | 1      | 2     | 2WU       | 0.90         | 18       | *               | 9,504                                     | 5,227  | *                       |
| 2017CPT.01.16.20702.1 | Pasquotank | 4      | SR 1103 | FROM NC 344 TO SR 1115          | 1      | 2     | 2WU       | 3.37         | 20       | *               | 40,341                                    | 22,188                                       | *                       |
| 2017CPT.01.16.20702.1 | Pasquotank | 5      | SR 1103 | FROM SR 1115 TO SR 1118         | 1      | 2     | 2WU       | 1.59         | 16       | *               | 15,325                                    | 8,429  | *                       |
| 2017CPT.01.16.20702.1 | Pasquotank | 6      | SR 1356 | FROM US 158 TO SR 1360          | 1      | 2     | 2WU       | 1.54         | 20       | *               | 18,469                                    | 10,158                                       | *                       |
| 2017CPT.01.16.20702.1 | Pasquotank | 7      | SR 1358 | FROM SR 1001 TO SR 1357         | 1      | 2     | 2WU       | 0.68         | 18       | *               | 7,181                                     | 3,949  | *                       |
| 2017CPT.01.16.20702.1 | Pasquotank | 8      | SR 1352 | FROM US 158 TO END OF PAVEMENT  | 1      | 2     | 2WU       | 1.22         | 20       | *               | 14,715                                    | 8,093  | *                       |
| 2017CPT.01.16.20702.1 | Pasquotank | 9      | SR 1352 | FROM SR 1354 TO END OF PAVEMENT | 1      | 2     | 2WU       | 0.21         | 20       | *               | 2,464                                     | 1,355  | *                       |
| 2017CPT.01.16.20702.1 | Pasquotank | 10     | SR 1356 | FROM US 158 TO SR 1001          | 1      | 2     | 2WU       | 3.30         | 20       | *               | 39,520                                    | 21,736                                       | *                       |
| 2017CPT.01.16.20702.1 | Pasquotank | 11     | SR 1355 | FROM SR 1354 TO SR 1354         | 1      | 2     | 2WU       | 0.69         | 20       | *               | 8,096                                     | 4,453  | *                       |
| <b>GRAND TOTAL</b>    |            |        |         |                                 |        |       |           |              |          |                 |   |  |                         |
|                       |            |        |         |                                 |        |       |           | <b>16.39</b> |          | <b>1</b>        | <b>186,933</b>                            | <b>102,813</b>                               | <b>1</b>                |

## SIGNING FOR ASPHALT SURFACE TREATMENT



| LEGEND |                           |
|--------|---------------------------|
|        | STATIONARY SIGN           |
| ←      | DIRECTION OF TRAFFIC FLOW |

### MAINLINE (-L-) SIGNING

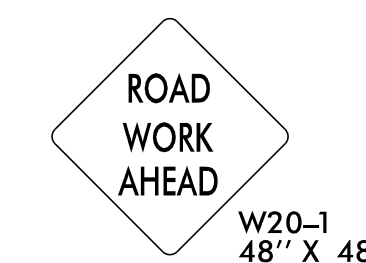
### -Y- LINE SIGNING

| SIGNING NOTES AND PLACEMENT PER DIRECTION | 1  | 2 | 3    | 4 | 5 |
|---|--|---|------|---|---|
|   |  |   | <br> |   |   |
|   | <p>PLACE 1000' PRIOR TO BEGINNING OF CONSTRUCTION LIMITS. ONLY USED ON -Y- LINES IF RESURFACING LIMITS EXTEND 1000' ALONG -Y- LINE.</p> <p>#2 SIGN ONLY USED WHEN RESURFACING LIMITS ARE 2 OR MORE MILES IN LENGTH. ROUND UP TO NEXT WHOLE NUMBER. (NO FRACTIONAL OR DECIMAL NUMBERS)</p>  |   |      |   |   |
|   | <p>- ALTERNATE THE FOLLOWING TWO SIGNS:</p> <p>- STARTING WITH "LOOSE GRAVEL" (W8-7) FOLLOWED BY "UNMARKED PAVEMENT".</p> <p>- PLACE INITIALLY AT THE CONSTRUCTION LIMITS AND SPACED 1 MILE APART THEREAFTER.</p> <p>- AT TEE INTERSECTIONS INSTALL INITIALLY 0.5 MILE FROM INTERSECTION AND SPACE 1 MILE APART THEREAFTER.</p>  |   |      |   |   |
|   | <p>- THESE ARE FOR -Y- LINES THAT ARE "THROUGH" ROADWAYS.</p> <p>- DEAD END AND SUBDIVISION ROADS ARE NOT "THROUGH" ROADWAYS.</p> <p>- INSTALL 500' +/- FROM EACH -Y- LINE APPROACH AS SHOWN ABOVE.</p> <p>- FOR MULTIPLE -Y- LINES THAT ARE SEPARATED BY 0.25 MILES OR LESS, TREAT AS A SINGLE UNIT AND INSTALL WITHIN 500' OF EACH APPROACH.</p> <p>- A MAXIMUM OF 2 SIGN SETS PER MILE. DO NOT INSTALL WHEN -Y- LINES ARE WITHIN 0.5 MILES FROM "END ROAD WORK" SIGN.</p> <p>- FOR TEE INTERSECTIONS, INSTALL WITHIN 500' +/- OF THE INTERSECTION ALONG -L- LINE.</p> |   |      |   |   |
|   | <p>PLACE 500' FOLLOWING THE END OF CONSTRUCTION LIMITS OR AS SHOWN WHEN WORK ENDS AT A 3-WAY TEE INTERSECTION.</p>   |   |      |   |   |

NO REQUIRED STATIONARY SIGNING FOR THE FOLLOWING -Y- LINE CONDITIONS:

- 1) LESS THAN 1000' OF RESURFACING ALONG -Y- LINE
- 2) SUBDIVISION ROADS
- 3) DEAD END ROADS

WHEN PAVING/CONSTRUCTION ACTIVITIES PROCEED ACROSS AN UNSIGNED -Y- LINE, ADVANCE WARNING PORTABLE SIGNS SHALL BE USED ALONG THE -Y- LINE AS SHOWN BELOW. REMOVE UPON COMPLETION OF WORK.



PLACED 500' IN ADVANCE OF FLAGGER. PLACED 250' IN ADVANCE OF FLAGGER.



**ADVANCE WARNING SIGNS  
FOR  
ASPHALT SURFACE TREATMENTS  
2 LANE ROADWAYS**