

CONTRACT: DA00387 WBS ELEMENT: 2018CPT.01.17.20482.1, ETC.

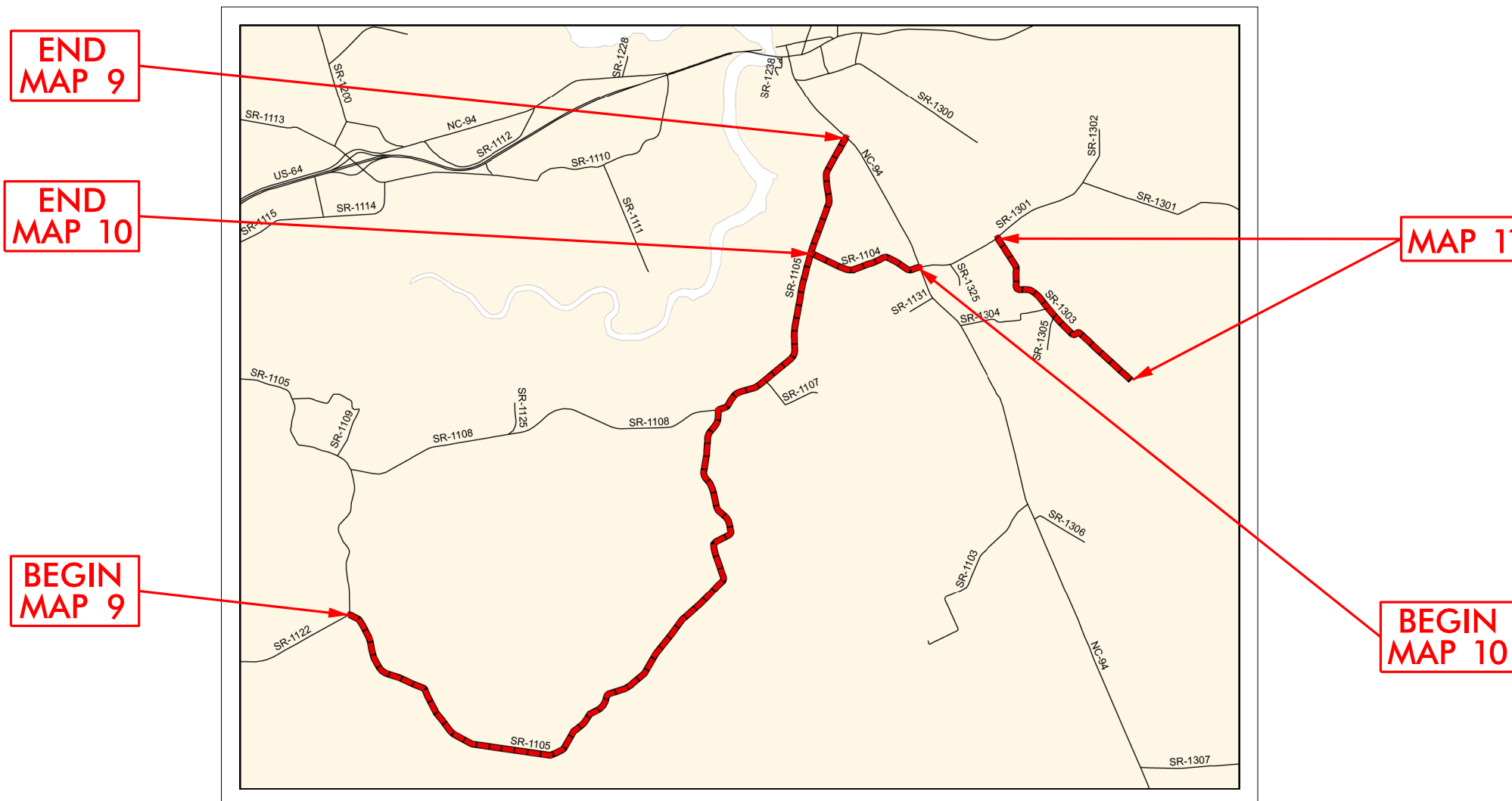
STATE OF NORTH CAROLINA
DIVISION OF HIGHWAYS

TYRRELL COUNTY

STATE	STATE PROJECT REFERENCE NO.	SHEET NO.	TOTAL SHEETS
N.C.	2018CPT.01.17.20482.1, ETC.	2	
STATE PROJ. NO.	F.A. PROJ. NO.	DESCRIPTION	
2018CPT.01.17.20892.1		MAP 9	
2018CPT.01.17.20892.1		MAP 10	
2018CPT.01.17.20892.1		MAP 11	

LOCATION: MAP 9 – SR 1105 – FROM SR 1122 TO NC 94
 MAP 10 – SR 1104 – FROM NC 94 TO SR 1105
 MAP 11 – SR 1303 – FROM SR 1301 TO DEAD END

TYPE OF WORK: ASPHALT SURFACE TREATMENT, DOUBLE SEAL



NOT TO SCALE

PROJECT LENGTH
 LENGTH OF MAP 9 = 8.94 MI.
 LENGTH OF MAP 10 = 1.02 MI.
 LENGTH OF MAP 11 = 1.80 MI.

Prepared in the Office of:
DIVISION OF HIGHWAYS
 113 Airport Dr., Edenton NC, 27932

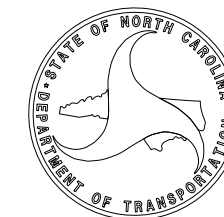
2018 STANDARD SPECIFICATIONS

LETTING DATE:

W.B. HOBBS, P.E.
 DIVISION PROJECT MANAGER

C.E. SLACHTA
 DIVISION PROPOSALS ENGINEER

DIVISION OF HIGHWAYS
 STATE OF NORTH CAROLINA



CONTRACT: DA00387 WBS ELEMENT: 2018CPT.01.17.20482.1, ETC.

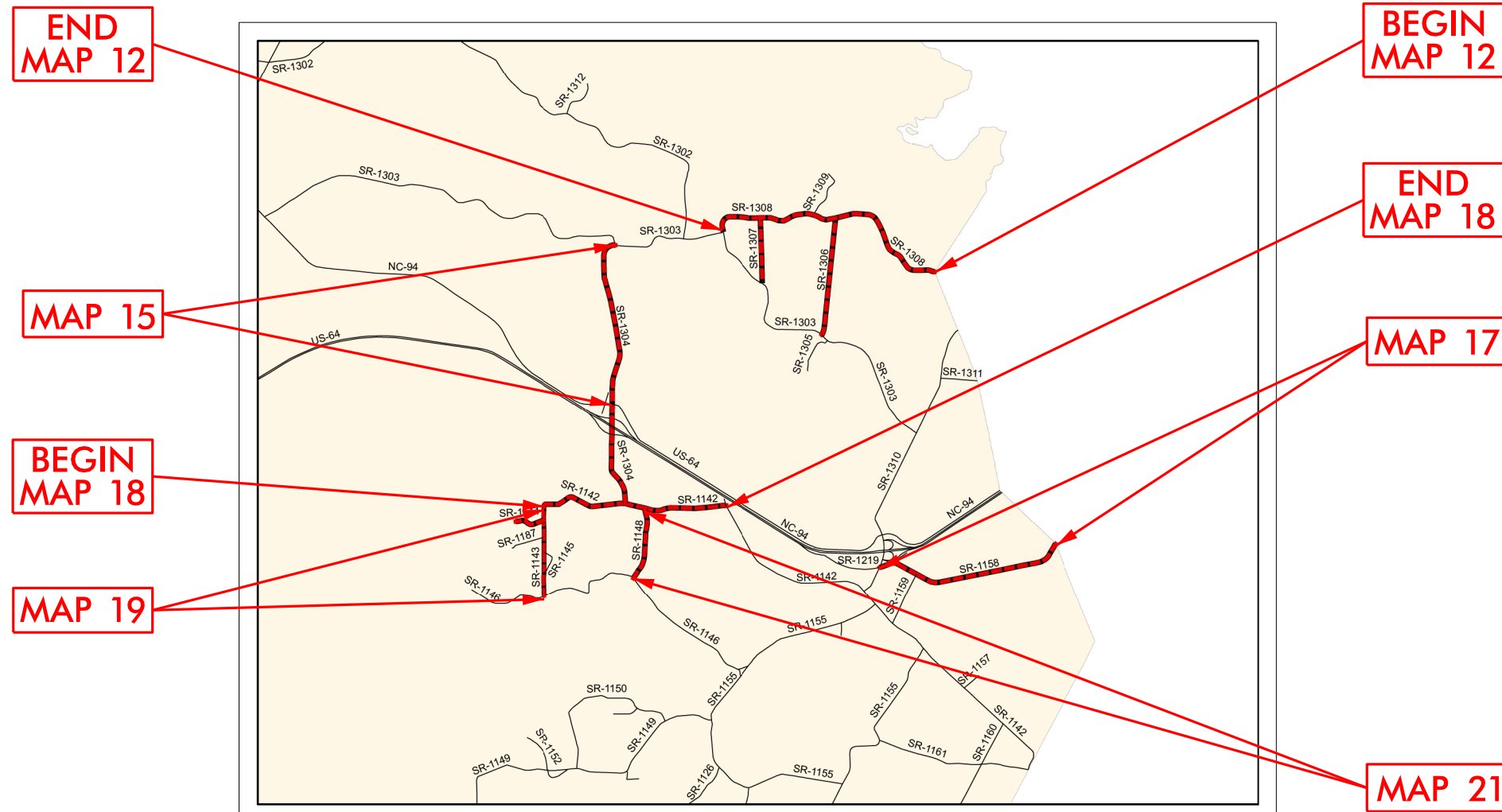
STATE OF NORTH CAROLINA
DIVISION OF HIGHWAYS

WASHINGTON COUNTY

LOCATION: MAP 12 – SR 1308 – FROM TYRRELL CO. TO SR 1303
 MAP 15 – SR 1304 – FROM SR 1303 TO NC 94
 MAP 17 – SR 1158 – FROM TYRRELL CO. TO SR 1310
 MAP 18 – SR 1142 – FROM SR 1143 TO SR 1169
 MAP 19 – SR 1143 – FROM SR 1146 TO SR 1142
 MAP 21 – SR 1148 – FROM SR 1142 TO SR 1146

TYPE OF WORK: ASPHALT SURFACE TREATMENT, DOUBLE SEAL

STATE	STATE PROJECT REFERENCE NO.	SHEET NO.	TOTAL SHEETS
N.C.	2018CPT.01.17.20482.1, ETC.	3	
STATE PROJ. NO.	F.A. PROJ. NO.	DESCRIPTION	
2018CPT.01.17.20942.1		MAP 12	
2018CPT.01.17.20942.1		MAP 15	
2018CPT.01.17.20942.1		MAP 17	
2018CPT.01.17.20942.1		MAP 18	
2018CPT.01.17.20942.1		MAP 19	
2018CPT.01.17.20942.1		MAP 21	



NOT TO SCALE

PROJECT LENGTH

LENGTH OF MAP 12 = 2.54 MI.
 LENGTH OF MAP 15 = 1.66 MI.
 LENGTH OF MAP 17 = 1.89 MI.
 LENGTH OF MAP 18 = 1.84 MI.
 LENGTH OF MAP 19 = 0.91 MI.
 LENGTH OF MAP 21 = 0.72 MI.

Prepared in the Office of:

DIVISION OF HIGHWAYS

113 Airport Dr., Edenton NC, 27932

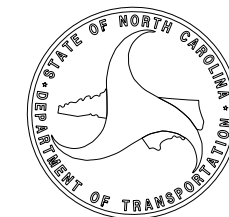
2018 STANDARD SPECIFICATIONS

LETTING DATE:

W.B. HOBBS, P.E.
DIVISION PROJECT MANAGER

C.E. SLACHTA
DIVISION PROPOSALS ENGINEER

**DIVISION OF HIGHWAYS
STATE OF NORTH CAROLINA**



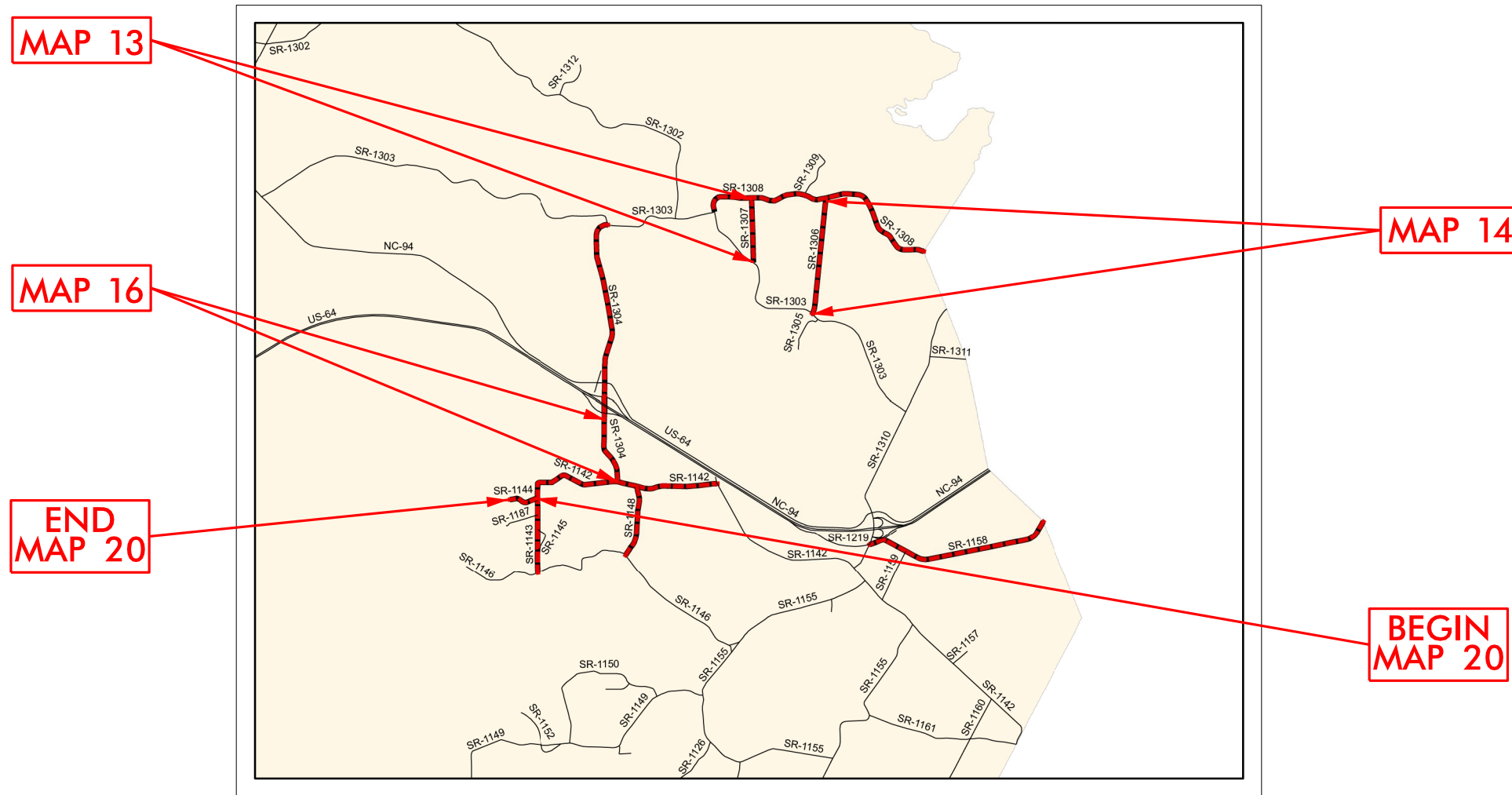
CONTRACT: DA00387 WBS ELEMENT: 2018CPT.01.17.20482.1, ETC.

STATE OF NORTH CAROLINA
DIVISION OF HIGHWAYS
WASHINGTON COUNTY

STATE	STATE PROJECT REFERENCE NO.	SHEET NO.	TOTAL SHEETS
N.C.	2018CPT.01.17.20482.1, ETC.	4	
STATE PROJ. NO.	F.A. PROJ. NO.	DESCRIPTION	
2018CPT.01.17.20942.1		MAP 13	
2018CPT.01.17.20942.1		MAP 14	
2018CPT.01.17.20942.1		MAP 16	
2018CPT.01.17.20942.1		MAP 20	

LOCATION: MAP 13 – SR 1307 – FROM SR 1308 TO SR 1303
 MAP 14 – SR 1306 – FROM SR 1308 TO SR 1303
 MAP 16 – SR 1304 – FROM PVMT.CHANGE TO SR 1142
 MAP 20 – SR 1144 – FROM SR 1143 TO DEAD END

TYPE OF WORK: ASPHALT SURFACE TREATMENT, DOUBLE SEAL



NOT TO SCALE

PROJECT LENGTH

LENGTH OF MAP 13 = 0.64 MI.
 LENGTH OF MAP 14 = 1.16 MI.
 LENGTH OF MAP 16 = 0.53 MI.
 LENGTH OF MAP 20 = 0.30 MI.

Prepared in the Office of:
DIVISION OF HIGHWAYS
 113 Airport Dr., Edenton NC, 27932

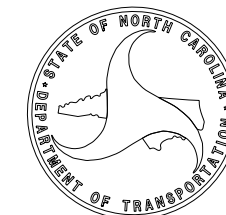
2018 STANDARD SPECIFICATIONS

LETTING DATE:

W.B. HOBBS, P.E.
 DIVISION PROJECT MANAGER

C.E. SLACHTA
 DIVISION PROPOSALS ENGINEER

DIVISION OF HIGHWAYS
 STATE OF NORTH CAROLINA



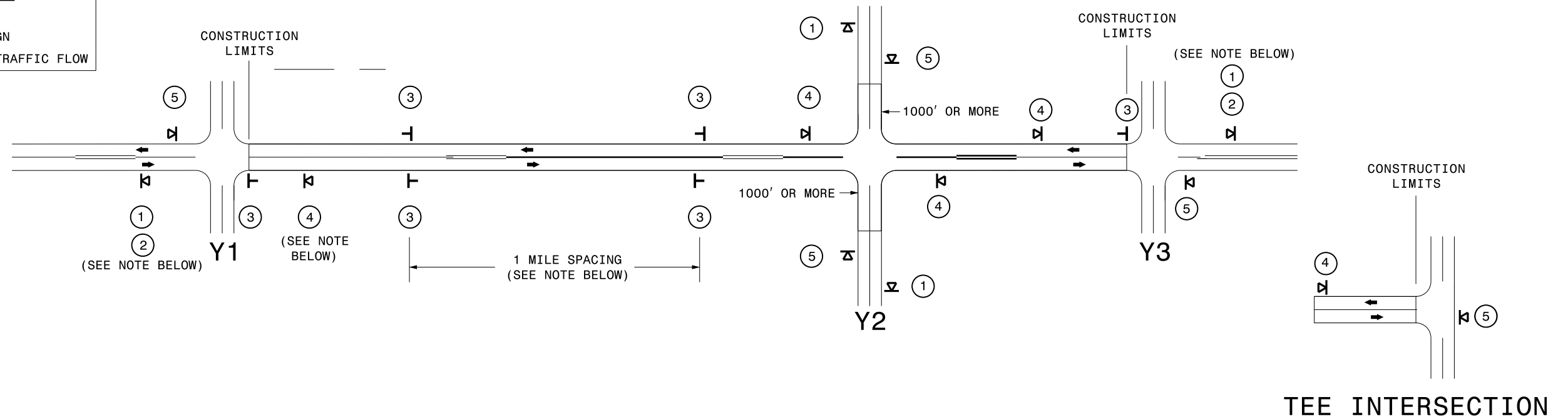
PROJECT NO.	SHEET NO.	TOTAL NO.
2018CPT.01.17.20482.1,ETC.	6	

SUMMARY OF QUANTITIES

PROJECT NO	COUNTY	MAP NO	ROUTE	DESCRIPTION	TYP NO	LANES	LANE TYPE	FINAL SURFACE TESTING	WARM MIX ASPHALT REQUIRED	LENGTH	WIDTH	MOBILIZATION	ASPHALT SURFACE TREATMENT, (DOUBLE SEAL)	EMULSION FOR ASPHALT SURFACE TREATMENT	TEMPORARY TRAFFIC CONTROL	4" WHITE PAINT	4" YELLOW PAINT
										MI	FT	LS	SY	GAL	LS	LF	LF
2018CPT.01.17.20482.1	Hyde	1	SR1101 GOSHEN BACK RD	US264 TO SR1104	1	2	2WU	NO	NO	1.02	20	1	11,968	7,181	1	21,950	13,464
2018CPT.01.17.20482.1	Hyde	2	SR1103 LAZY LANE RD	US264 TO SR1104	1	2	2WU	NO	NO	1.2	20	*	14,080	8,448	*	25,824	15,840
2018CPT.01.17.20482.1	Hyde	3	SR1104 GOSHEN RD	SR1108 TO SR1103	1	2	2WU	NO	NO	1.76	20	*	20,651	12,390	*	37,875	23,232
2018CPT.01.17.20482.1	Hyde	4	SR1114 FARROWS FORK RD	US264 TO SR1108	1	2	2WU	NO	NO	1.61	20	*	18,891	11,334	*	34,647	21,252
2018CPT.01.17.20482.1	Hyde	5	SR1108 WHITE PLAINS RD	SR1114 TO SR1110	1	2	2WU	NO	NO	3.57	20	*	41,888	25,133	*	76,826	47,124
2018CPT.01.17.20482.1	Hyde	6	SR1109 MARSH RD	SR1108 TO DEAD END	1	2	2WU	NO	NO	0.48	20	*	5,632	3,379	*	10,330	6,336
2018CPT.01.17.20482.1	Hyde	7	SR1111 THE HIGH RD	SR1110 TO SR1107	1	2	2WU	NO	NO	1.36	20	*	15,957	9,574	*	29,267	17,952
2018CPT.01.17.20482.1	Hyde	8	SR1314 LAKE SWAMP RD	DEAD END TO SR1311	1	2	2WU	NO	NO	1.06	20	*	12,437	7,462	*	22,811	13,992
2018CPT.01.17.20892.1	Tyrrell	9	SR1105 CROSSLANDING RD	SR1122 TO NC94	1	2	2WU	NO	NO	8.94	20	*	104,896	62,398	*	192,389	118,008
2018CPT.01.17.20892.1	Tyrrell	10	SR1104 NEWLANDS RD	NC94 TO SR1105	1	2	2WU	NO	NO	1.02	20	*	11,968	7,192	*	21,950	13,464
2018CPT.01.17.20892.1	Tyrrell	11	SR1303 JERRY POST OFFICE RD	SR1301 TO DEAD END	1	2	2WU	NO	NO	1.8	20	*	21,120	12,672	*	38,736	23,760
2018CPT.01.17.20942.1	Washington	12	SR1308 DEEP CREEK RD	TYRRELL CO. LINE TO SR1303	1	2	2WU	NO	NO	2.54	20	*	29,803	17,881	*	54,661	33,528
2018CPT.01.17.20942.1	Washington	13	SR1307 COOPER RD	SR1308 TO SR1303	1	2	2WU	NO	NO	0.64	20	*	7,509	4,505	*	13,773	8,448
2018CPT.01.17.20942.1	Washington	14	SR1306 GOLF RD	SR1308 TO SR1303	1	2	2WU	NO	NO	1.16	20	*	13,611	8,166	*	24,963	15,312
2018CPT.01.17.20942.1	Washington	15	SR1304 MILE WRERCH RD	SR1303 TO NC94	1	2	2WU	NO	NO	1.66	20	*	19,477	11,686	*	35,723	21,912
2018CPT.01.17.20942.1	Washington	16	SR1304 MILE WRERCH RD	PVT CHANGE TO SR1142	1	2	2WU	NO	NO	0.53	20	*	6,219	3,731	*	11,406	6,996
2018CPT.01.17.20942.1	Washington	17	SR1158 OLD CRESWELL RD	TYRRELL CO LINE TO SR1310	1	2	2WU	NO	NO	1.89	20	*	22,176	13,305	*	40,673	24,948
2018CPT.01.17.20942.1	Washington	18	SR1142 MEADOW RD	SR1143 TO SR1169	1	2	2WU	NO	NO	1.84	20	*	21,589	12,953	*	39,597	24,288
2018CPT.01.17.20942.1	Washington	19	SR1143 MT TABOR RD	SR1146 TO SR1142	1	2	2WU	NO	NO	0.91	20	*	10,677	6,406	*	19,583	12,012
2018CPT.01.17.20942.1	Washington	20	SR1144 FURLOUGH RD	SR1143 TO DEAD END	1	2	2WU	NO	NO	0.3	20	*	3,520	2,112	*	6,456	3,960
2018CPT.01.17.20942.1	Washington	21	SR1148 CROSS RD	SR1142 TO SR1146	1	2	2WU	NO	NO	0.72	20	*	8,448	5,068	*	15,494	9,504
GRAND TOTAL										36.01		1	422,517	252,976	1	774,934	475,332
																1,250,266	

SIGNING FOR ASPHALT SURFACE TREATMENT

LEGEND	
	PORTABLE SIGN
	STATIONARY SIGN
	DIRECTION OF TRAFFIC FLOW



MAINLINE (-L-) SIGNING

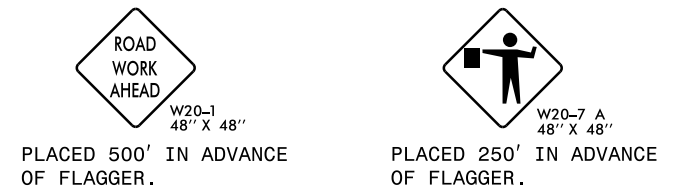
-Y- LINE SIGNING

SIGNING NOTES AND PLACEMENT PER DIRECTION	①		W20-1 48" X 48"	- PLACE 1000' PRIOR TO BEGINNING OF CONSTRUCTION LIMITS. ONLY USED ON -Y- LINES IF RESURFACING LIMITS EXTEND 1000' ALONG -Y- LINE.
	②		W7-3aP 24" X 18"	- SIGN #2 ONLY USED WHEN RESURFACING LIMITS ARE 2 OR MORE MILES IN LENGTH. ROUND UP TO THE NEAREST WHOLE NUMBER. DO NOT USE FRACTIONAL OR DECIMAL NUMBERS.
	③		W8-7 48" X 48"	- ALTERNATE THE FOLLOWING TWO SIGNS: - STARTING WITH "LOOSE GRAVEL" (W8-7) FOLLOWED BY "UNMARKED PAVEMENT". - PLACE INITIALLY AT THE CONSTRUCTION LIMITS AND SPACED 1 MILE APART THEREAFTER.
			SP 48" X 48"	- AT TEE INTERSECTIONS INSTALL INITIALLY 0.5 MILE FROM INTERSECTION AND SPACE 1 MILE APART THEREAFTER.
	④		SP 13106 48" X 48"	- THESE ARE FOR -Y- LINES THAT ARE "THROUGH" ROADWAYS. DEAD END AND SUBDIVISION ROADS ARE NOT "THROUGH" ROADWAYS. - INSTALL 500' +/- FROM EACH -Y- LINE APPROACH AS SHOWN ABOVE. - FOR MULTIPLE -Y- LINES THAT ARE SEPARATED BY 0.25 MILES OR LESS, TREAT AS A SINGLE UNIT AND INSTALL WITHIN 500' OF EACH APPROACH. - A MAXIMUM OF 2 SIGN SETS PER MILE. DO NOT INSTALL WHEN -Y- LINES ARE WITHIN 0.5 MILES FROM "END ROAD WORK" SIGN.
⑤		G20-2 A 48" X 24"	PLACE 500' FOLLOWING THE END OF CONSTRUCTION LIMITS OR AS SHOWN WHEN WORK ENDS AT A 3-WAY TEE INTERSECTION.	

STATIONARY SIGNING NOT REQUIRED FOR THE FOLLOWING -Y- LINE CONDITIONS:

- 1) LESS THAN 1000' OF RESURFACING ALONG -Y- LINE
- 2) SUBDIVISION ROADS
- 3) DEAD END ROADS

WHEN PAVING/CONSTRUCTION ACTIVITIES PROCEED ACROSS AN UNSIGNED -Y- LINE, PORTABLE ADVANCE WARNING SIGNS SHALL BE USED ALONG THE -Y- LINE AS SHOWN BELOW. REMOVE UPON COMPLETION OF WORK.



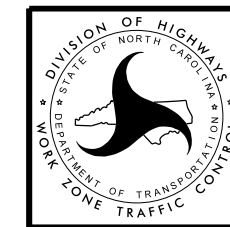
PLACED 500' IN ADVANCE OF FLAGGER.

PLACED 250' IN ADVANCE OF FLAGGER.

THE ABOVE SIGNS ARE ALL THAT ARE REQUIRED FOR A CONTRACTOR TO BEGIN A RESURFACING CONTRACT. ANY ADDITIONAL SIGNS REQUESTED BY NCDOT DIVISIONS SHALL BE INSTALLED WITHIN 7 BUSINESS DAYS OF THE START OF CONTRACT WORK.

MAPS LESS THAN 2 MILES

FOR AST RESURFACING MAPS WITH CONSTRUCTION LIMITS LESS THAN 2 MILES IN LENGTH, USE A STATIONARY "LOOSE GRAVEL" SIGN AT THE BEGINNING CONSTRUCTION LIMIT FOLLOWED BY AN "UNMARKED PAVEMENT" SIGN MIDWAY THROUGH AND AN "END ROAD WORK" SIGN AT THE END CONSTRUCTION LIMIT.



**ADVANCE WARNING SIGNS
FOR
2-LANE ROADWAY
ASPHALT SURFACE TREATMENT**