

09/08/19

CONTRACT NO.: DA00464 WBS ELEMENT: 2019CPT.01.18.20082.1, ETC.

STATE OF NORTH CAROLINA
DIVISION OF HIGHWAYS

BERTIE COUNTY

STATE	STATE PROJECT REFERENCE NO.	SHEET NO.	TOTAL SHEETS
N.C.	2019CPT.01.18.20082.1, ETC.	1	
STATE PROJ. NO.	F.A. PROJ. NO.	DESCRIPTION	
2019CPT.01.18.20082.1		PE, CONST	
2019CPT.01.19.20462.1		PE, CONST	

MAP 1 SR 1213 FROM NC 11 BUS. TO HERTFORD CO. LINE
& SR 1117 (HERTFORD CO.) FROM BERTIE CO. LINE TO SR 1118
MAP 2 SR 1210 FROM SR 1200 TO SR 1200
MAP 4 SR 1117 FROM DEAD END TO SR 1301

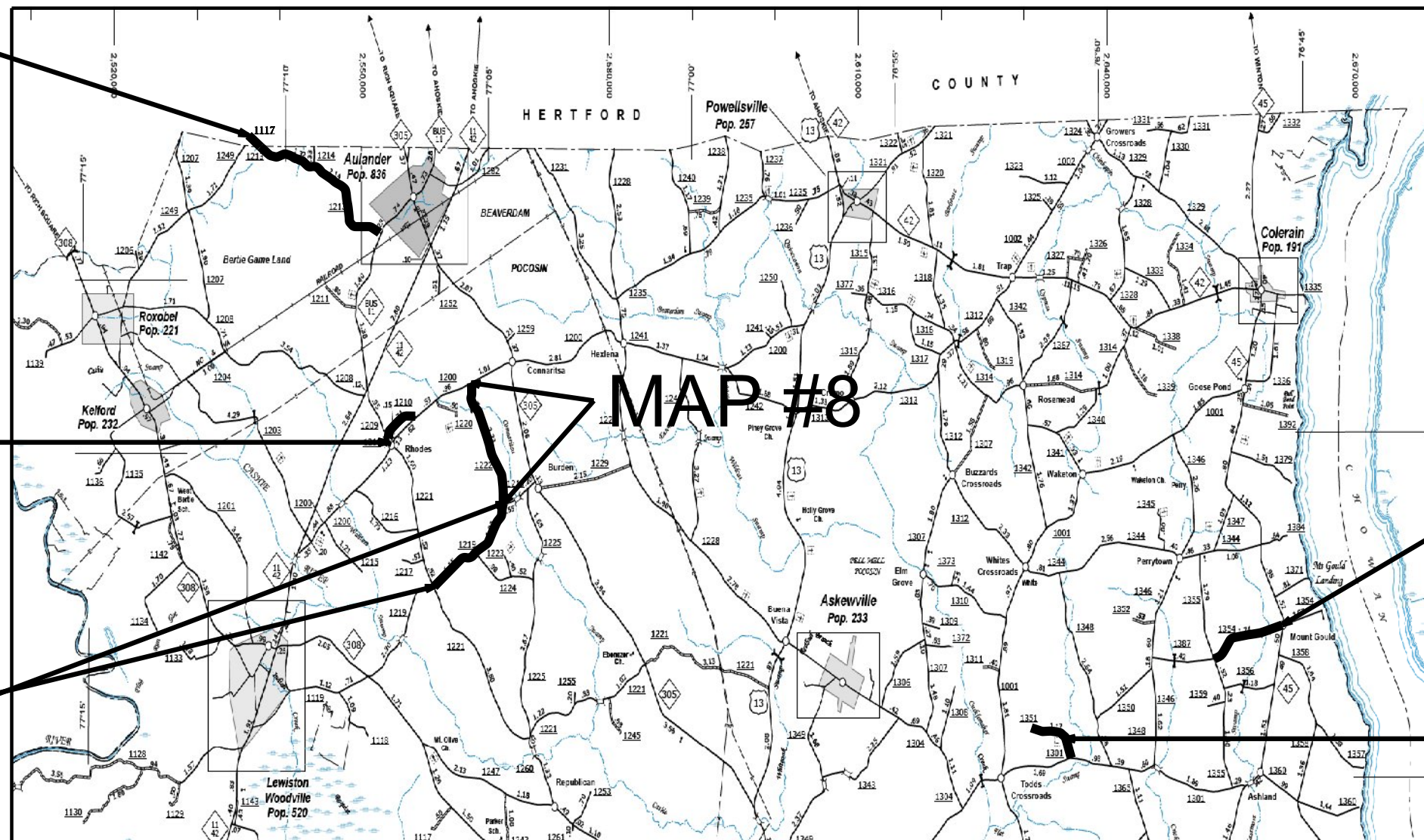
MAP 7 SR 1354 FROM SR 1355 TO NC 45
MAP 8 SR 1222 FROM SR 1200 TO SR 1219
MAP 9 SR 1219 FROM SR 1222 TO SR 1221

TYPE OF WORK: FULL DEPTH RECLAMATION

MAP #1

MAP #2

MAP #9



MAP #7

MAP #4

NTS

PROJECT LENGTH

LENGTH OF ROADWAY PROJECT MAP 1 = 3.83 MI.
LENGTH OF ROADWAY PROJECT MAP 2 = 1.00 MI.

LENGTH OF ROADWAY PROJECT MAP 4 = 1.17 MI.

LENGTH OF ROADWAY PROJECT MAP 7 = 1.85 MI.
LENGTH OF ROADWAY PROJECT MAP 8 = 2.22 MI.
LENGTH OF ROADWAY PROJECT MAP 9 = 2.21 MI.

Prepared in the Office of:
DIVISION OF HIGHWAYS
113 Airport Dr., Edenton NC, 27932

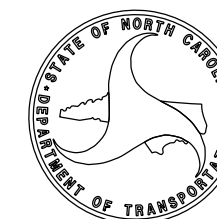
2018 STANDARD SPECIFICATIONS

LETTING DATE:
JUNE 26, 2019

W.B. HOBBS, P.E.
DIVISION PROJECT MANAGER

C.E. SLACHTA
DIVISION PROPOSALS ENGINEER

DIVISION OF HIGHWAYS
STATE OF NORTH CAROLINA



09/08/19

CONTRACT NO.: DA00464 WBS ELEMENT: 2019CPT.01.18.20082.1

STATE OF NORTH CAROLINA
DIVISION OF HIGHWAYS

BERTIE COUNTY

MAP 3 SR 1124 FROM DEAD END TO SR 1108
MAP 5 SR 1513 FROM DEAD END TO NC 308
MAP 6 SR 1504 FROM DEAD END TO US 17 BUS

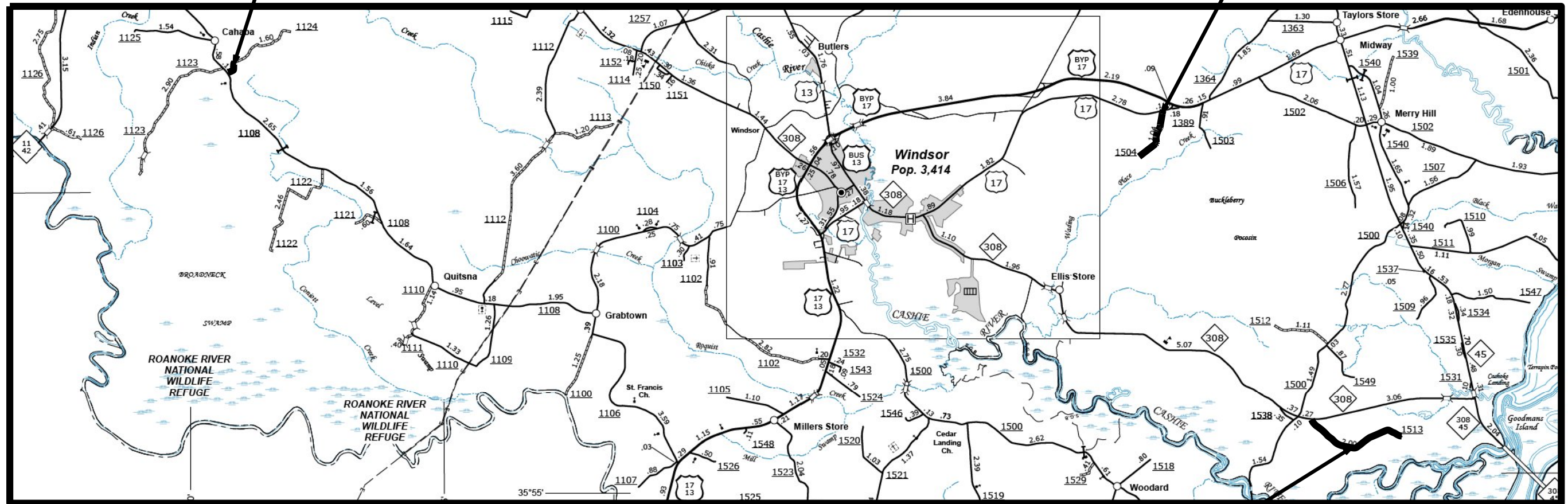
TYPE OF WORK: FULL DEPTH RECLAMATION

STATE	STATE PROJECT REFERENCE NO.	SHEET NO.	TOTAL SHEETS
N.C.	2019CPT.01.18.20082.1	1A	
STATE PROJ. NO.	F.A. PROJ. NO.	DESCRIPTION	
2019CPT.01.18.20082.1		PE, CONST	



MAP #3

MAP #6



MAP #5

NTS

PROJECT LENGTH

LENGTH OF ROADWAY PROJECT MAP 3 = 0.25 MI.
LENGTH OF ROADWAY PROJECT MAP 5 = 1.83 MI.
LENGTH OF ROADWAY PROJECT MAP 6 = 1.10 MI.

Prepared in the Office of:
DIVISION OF HIGHWAYS

113 Airport Dr., Edenton NC, 27932

2018 STANDARD SPECIFICATIONS

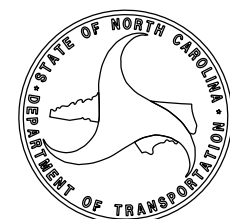
LETTING DATE:

JUNE 26, 2019

W.B. HOBBS, P.E.
DIVISION PROJECT TEAM LEAD

C.E. SLACHTA
DIVISION PROPOSALS ENGINEER

DIVISION OF HIGHWAYS
STATE OF NORTH CAROLINA

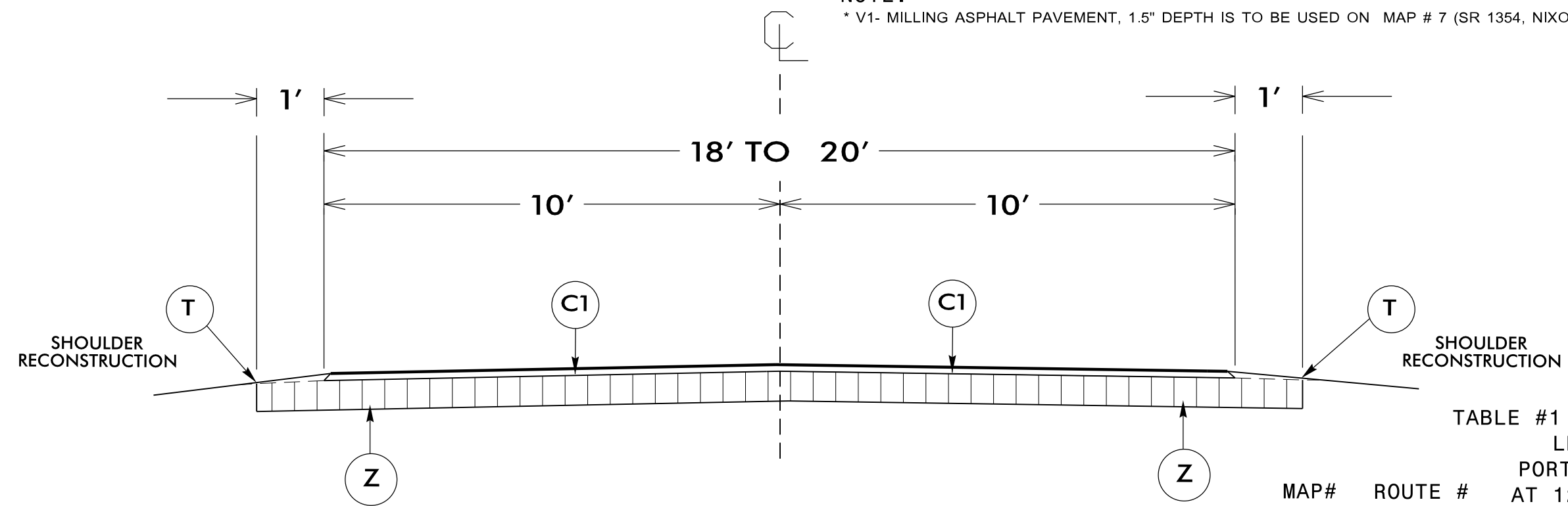


1. VEGETATION MUST BE REMOVED FROM SHOULDER 1' BEYOND PROPOSED EDGE OF PAVEMENT PRIOR TO PERFORMING FULL DEPTH RECLAMATION (FDR)
2. CONTRACTOR IS REQUIRED TO HAVE AN OPERATIONAL & EFFECTIVE DUST SUPPRESSION SYSTEM, THROUGHOUT THE CEMENT APPLICATION PROCESS.
3. CEMENT LADEN WATER MUST NOT BE ALLOWED TO LEAVE ROADWAY.
4. IF ASPHALT CURING SEAL IS APPLIED, BLOTTING MATERIAL MUST BE THOROUGHLY REMOVED PRIOR TO PLACING ASPHALT CONCRETE SURFACE COURSE.
5. CONTRACTOR SHALL WET CURE FDR FOR 24 HOURS PRIOR TO PAVING. DO NOT LET THE SURFACE OF FDR DRY OUT. BE SURE TO USE A TACK COAT BETWEEN FDR AND NEXT LAYER OF ASPHALT PAVEMENT.
6. "NO" TRAFFIC WILL BE ALLOWED ON CEMENT TREATED BASE PRIOR TO PLACEMENT OF THE ASPHALT CONCRETE SURFACE COURSE.
7. PAVEMENT MARKINGS TO BE APPLIED BY THE CONTRACTOR.
8. SHOULDER RECONSTRUCTION TO BE COMPLETED BY THE CONTRACTOR.

P A V E M E N T S C H E D U L E

C1	PROP. APPROX. 3.0" ASPHALT CONCRETE SURFACE COURSE, TYPE S9.5C, AT AN AVERAGE RATE OF 168 LBS. PER SQ. YD. IN EACH OF TWO 1.5" LAYERS.
V1	MILLING ASPHALT PAVEMENT', 1.5" DEPTH
Z	PROP. FULL DEPTH RECLAMATION AT A DEPTH OF 12" WITH PORTLAND CEMENT TREATED BASE AT AN AVERAGE RATE OF (SEE TABLE #1 THIS SHEET)
T	EARTH MATERIAL

NOTE:
 * V1- MILLING ASPHALT PAVEMENT, 1.5" DEPTH IS TO BE USED ON MAP # 7 (SR 1354, NIXON RD.) AT BRIDGE SITE



TYPICAL SECTION NO. 1

USE WITH ALL MAPS

TABLE #1
 LBS PER SY
 PORTLAND CEMENT
 AT 12" MIX DEPTH

MAP#	ROUTE #	LBS PER SY PORTLAND CEMENT AT 12" MIX DEPTH
1	SR 1213	59
2	SR 1210	60
3	SR 1124	60
4	SR 1351	59
5	SR 1513	61
6	SR 1504	60
7	SR 1354	74
8	SR 1222	64
9	SR 1219	66

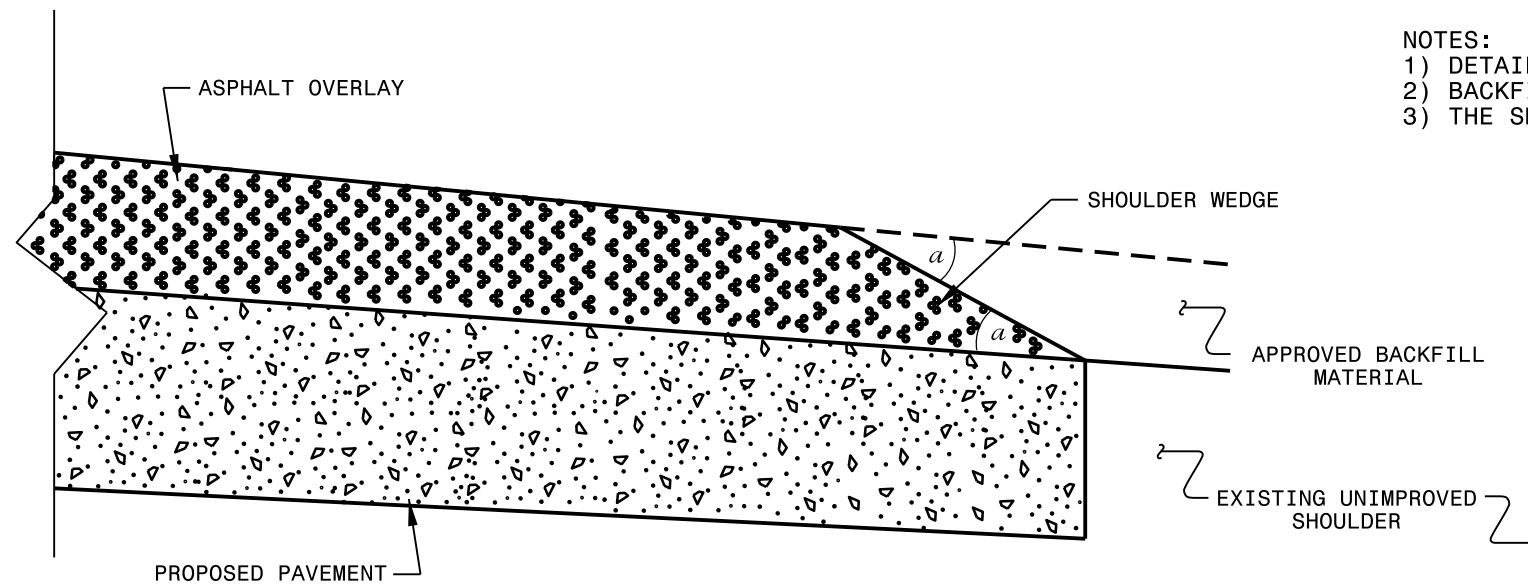
NOTES:

- *ALL PAVED S.R. ROADS TO BE RESURFACED TO THE ENDS OF THE RADII, OR AS DIRECTED BY THE ENGINEER
- *A TACK COAT BETWEEN THE FDR LAYER AND THE SURFACE COURSE LAYER IS REQUIRED

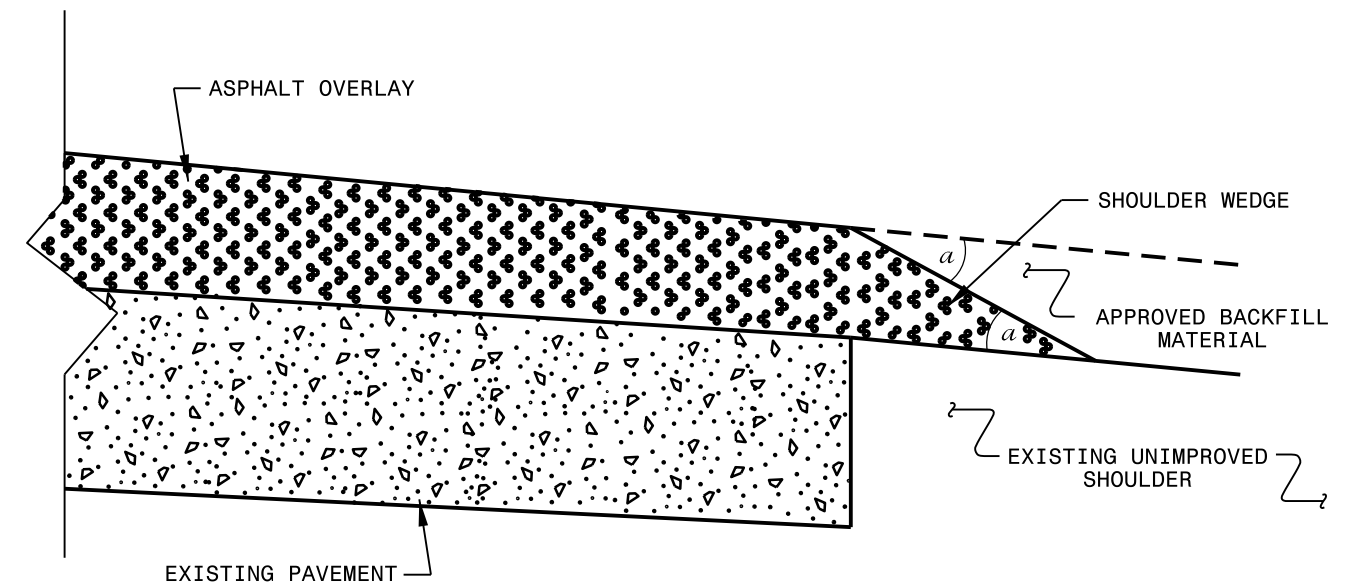
29-MAY-2019 09:04 St. Shered\Division_00g_Resurfacing & Retreatment Plans\2019-2020 FDR NC Resurfacing & Retreatment Plans\2019-20 FDR Bertie\040464_Bertie FDR Plans.dgn

NTS

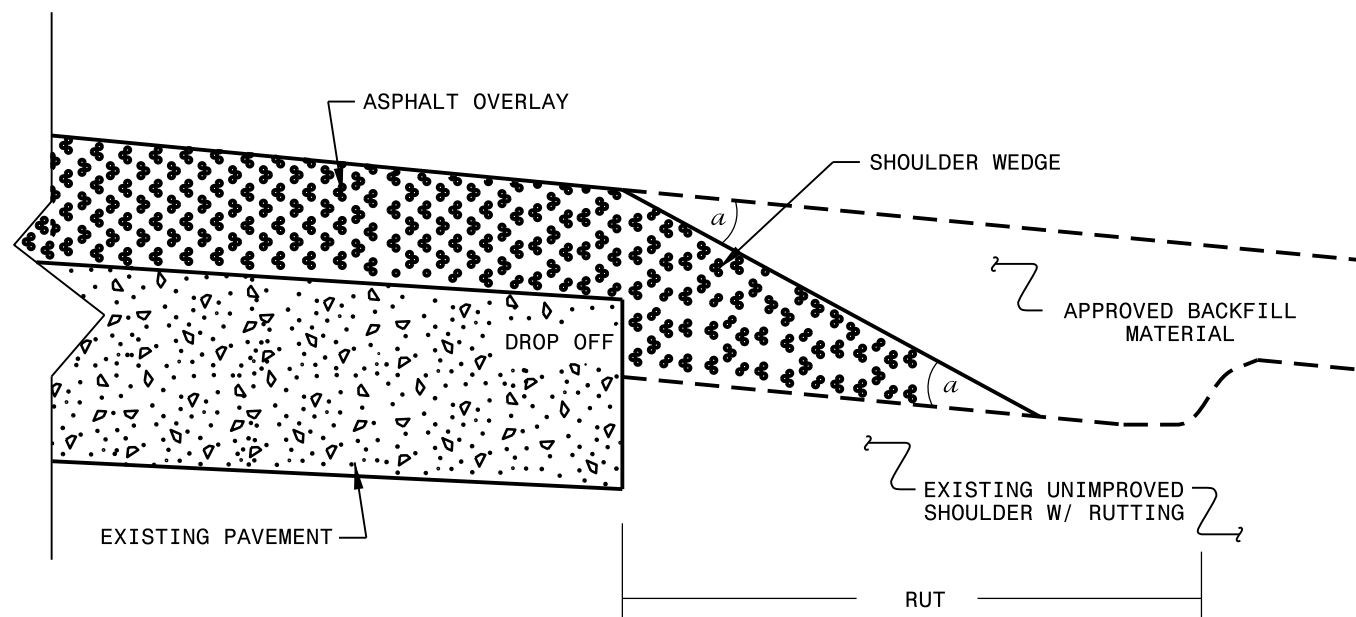
- NOTES:
- 1) DETAIL DOES NOT APPLY TO OGAFD AND ULTRA-THIN BONDED WEARING COURSE.
 - 2) BACKFILL SHOULDER WITH APPROVED MATERIAL.
 - 3) THE SHOULDER WEDGE DEVICE MAY BE DISENGAGED AT PAVED DRIVEWAYS AND SIDE STREETS.



SHOULDER WEDGE DETAIL
 (Resurfacing Projects w/ Widening or
 with Existing Paved Shoulder having no dropoffs)



SHOULDER WEDGE DETAIL
 (Resurfacing Projects w/ NO Widening)



SHOULDER WEDGE DETAIL
 (Resurfacing Adjacent to
 Rutted Shoulder)

- SHOULDER WEDGE ANGLE = 30°

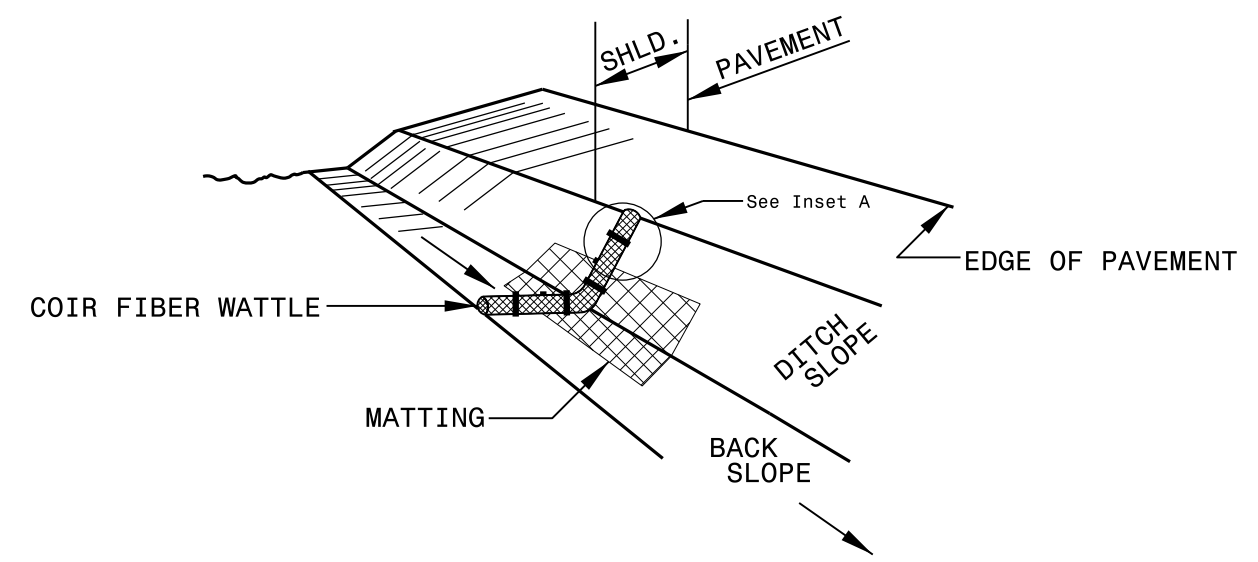
CONTRACT STANDARDS AND DEVELOPMENT UNIT	
Office 919-707-6950	FAX 919-250-4119
SHOULDER WEDGE DETAILS	
ORIGINAL BY: T.SPELL	DATE: 7-19-11
MODIFIED BY:	DATE: 10/16/12
CHECKED BY:	DATE:
FILE SPEC.: s:\usr\details\stand\shoulderwedgedetail.dgn	

PROJECT NO.	SHEET NO.
2019CPT.01.18.20082.1, ETC.	3

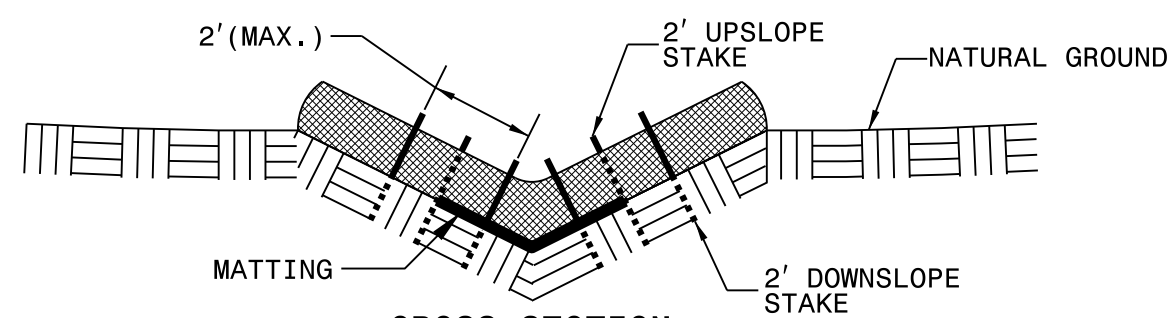
SUMMARY OF QUANTITIES

PROJECT NO	COUNTY	MAP NO	ROUTE	DESCRIPTION	TYP NO	LANES	LANE TYPE	FINAL SURFACE TESTING REQUIRED	WARM MIX ASPHALT REQUIRED	LENGTH	WIDTH	MOBILIZATION	BORROW EXCAVATION	SOIL CEMENT BASE	PORTLAND CEMENT FOR SOIL CEMENT BASE	INCIDENTAL STONE BASE	SHOULDER RECONSTRUCTION	MILLING ASPHALT PAVEMENT, 1.5"	SURFACE COURSE, S9.5C	ASPHALT BINDER FOR PLANT MIX	TEMPORARY SILT FENCE	COIR FIBER WATTLE	SEEDING & MULCHING	RESPONSE FOR EROSION CONTROL	WORK ZONE ADV/GEN WARNING SIGNING	TEMPORARY TRAFFIC CONTROL	GENERIC PAVEMENT MARKING ITEM (HOT SPRAY THERMO PVMT MARKING LINES, 4" 50 MILS)	4" WHITE PAINT	4" YELLOW PAINT
																												MI	FT
2019CPT.01.18.20082.1	Bertie	1	SR 1213 (BUCK BRANCH RD.)	NC 11 BUS. TO HERTFORD CNTY LINE	1	2	2WU	YES	NO	3.5	20	*	578	45,171	1,355	70	7.00		6,985	419	263	263	3.5	3	40	1	121,520	75,320	46,200
2019CPT.01.19.20462.1	Hertford	1	SR 1117 (HERTFORD COUNTY)	HERTFORD CNTY LINE TO SR 1118	1	2	2WU	YES	NO	0.33	20	*	54	4,259	129	7	0.66		724	43	25	25	0.3	1	60		11,458	7,102	4,356
2019CPT.01.18.20082.1	Bertie	2	SR1210 CLARENCE NOWELL RD	SR1200 TO SR1200	1	2	2WU	YES	NO	1	20	*	165	12,906	390	20	2.00		1,996	120	75	75	1.0	3	120	*	34,720	21,520	13,200
2019CPT.01.18.20082.1	Bertie	3	SR1124 GREEN POND RD	DEAD END TO SR1108	1	2	2WU	YES	NO	0.25	20	*	41	3,227	98	5	0.50		499	30	19	19	0.3	3	60	*	8,680	5,380	3,300
2019CPT.01.18.20082.1	Bertie	4	SR1351 JESSIE MACK RD	DEAD END TO SR1301	1	2	2WU	YES	NO	1.17	20	*	193	15,100	456	23	2.34		2,335	140	88	88	1.2	3	40	*	40,622	25,178	15,444
2019CPT.01.18.20082.1	Bertie	5	SR1513 BRIMERAGE RD	DEAD END TO NC308	1	2	2WU	YES	NO	1.83	20	*	302	23,618	772	37	3.66		3,652	219	137	137	1.8	3	40	*	63,538	39,382	24,156
2019CPT.01.18.20082.1	Bertie	6	SR1504 CASTELLOE RD	DEAD END TO US17 BUS	1	2	2WU	YES	NO	1.1	20	*	182	14,197	386	22	2.20		2,195	132	83	83	1.1	3	40	*	38,192	23,672	14,520
2019CPT.01.18.20082.1	Bertie	7	SR1354 NIXON RD	SR1355 TO NC45	1	2	2WU	YES	NO	1.85	18	*	305	21,484	778	37	3.70		3,342	201	139	139	1.9	4	120	*	64,232	39,812	24,420
2019CPT.01.18.20082.1	Bertie	8	SR1222 EARLY RD	SR1200 TO SR1219	1	2	2WU	YES	NO	2.22	20	*	366	28,651	866	44	4.88	250	4,431	266	167	167	4.9	3	80	*	77,078	47,774	29,304
2019CPT.01.18.20082.1	Bertie	9	SR1219 FRANCIS MILL RD	SR1222 TO SR1221	1	2	2WU	YES	NO	2.21	20	*	365	28,522	862	44	4.88		4,411	265	166	166	4.9	3	100	*	76,731	47,559	29,172
TOTAL FOR PROJ NO. 2019CPT.01.18.20082.1										15.46		1	2,551	197,135	6,092	309	31.82	250.0	30,570	1,835	1,162	1,162	20.85	29	700	1	536,771	332,699	204,072

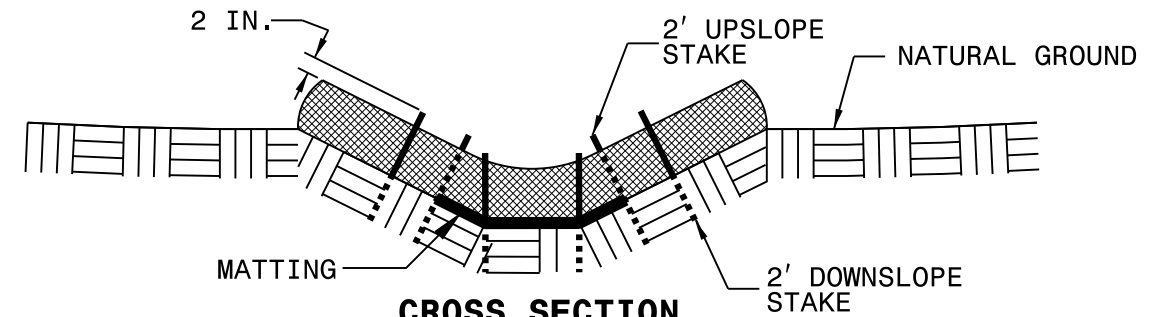
COIR FIBER WATTLE DETAIL



ISOMETRIC VIEW



**CROSS SECTION
VEE DITCH**



**CROSS SECTION
TRAPEZOIDAL DITCH**

NOTES:

USE MINIMUM 12 IN. DIAMETER COIR FIBER (COCONUT FIBER) WATTLE.

USE 2 FT. WOODEN STAKES WITH A 2 IN. BY 2 IN. NOMINAL CROSS SECTION.

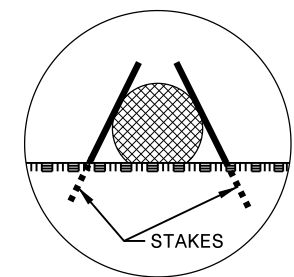
ONLY INSTALL WATTLE(S) TO A HEIGHT IN DITCH SO FLOW WILL NOT WASH AROUND WATTLE AND SCOUR DITCH SLOPES AND AS DIRECTED.

INSTALL A MINIMUM OF 2 UPSLOPE STAKES AND 4 DOWNSLOPE STAKES AT AN ANGLE TO WEDGE WATTLE TO BOTTOM OF DITCH.

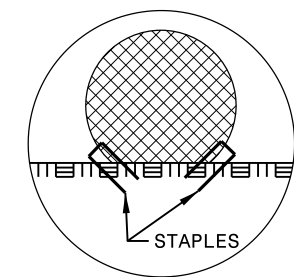
PROVIDE STAPLES MADE OF 0.125 IN. DIAMETER STEEL WIRE FORMED INTO A U SHAPE NOT LESS THAN 12" IN LENGTH.

INSTALL STAPLES APPROXIMATELY EVERY 1 LINEAR FOOT ON BOTH SIDES OF WATTLE AND AT EACH END TO SECURE IT TO THE SOIL.

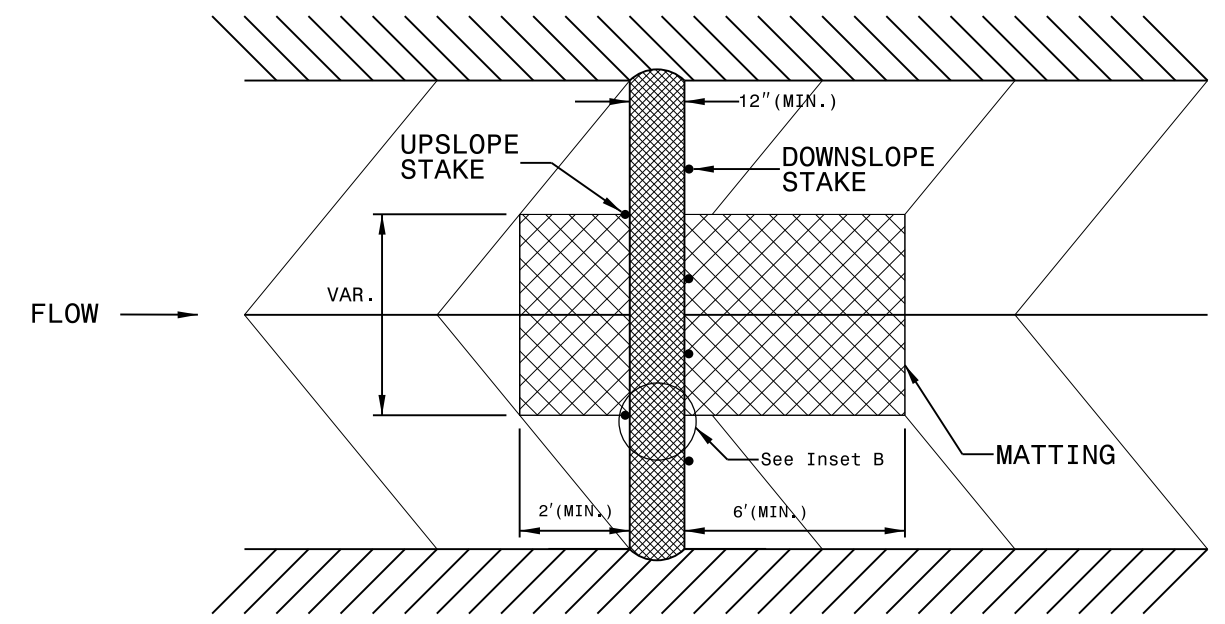
INSTALL MATTING IN ACCORDANCE WITH SECTION 1631 OF THE STANDARD SPECIFICATIONS.



INSET A



INSET B



TOP VIEW

DIVISION OF HIGHWAYS
STATE OF NORTH CAROLINA

PROJECT REFERENCE NO.	SHEET NO.
2019CPT.01.18.20082.1, ETC.	EC-2

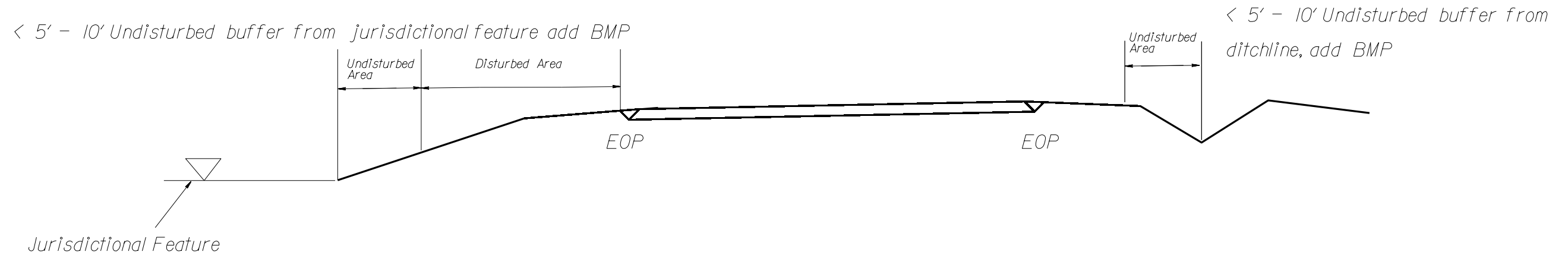
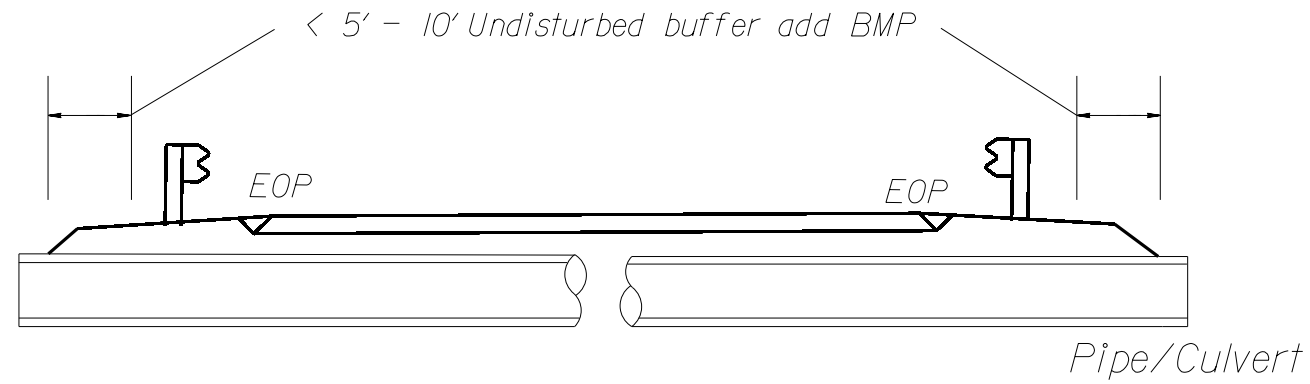
SOIL STABILIZATION TIMEFRAMES

<i>SITE DESCRIPTION</i>	<i>STABILIZATION TIME</i>	<i>TIMEFRAME EXCEPTIONS</i>
PERIMETER DIKES, SWALES, DITCHES AND SLOPES	7 DAYS	NONE
HIGH QUALITY WATER (HQW) ZONES	7 DAYS	NONE
SLOPES STEEPER THAN 3:1	7 DAYS	IF SLOPES ARE 10' OR LESS IN LENGTH AND ARE NOT STEEPER THAN 2:1, 14 DAYS ARE ALLOWED.
SLOPES 3:1 OR FLATTER	14 DAYS	7 DAYS FOR SLOPES GREATER THAN 50' IN LENGTH.
ALL OTHER AREAS WITH SLOPES FLATTER THAN 4:1	14 DAYS	NONE, EXCEPT FOR PERIMETERS AND HQW ZONES.

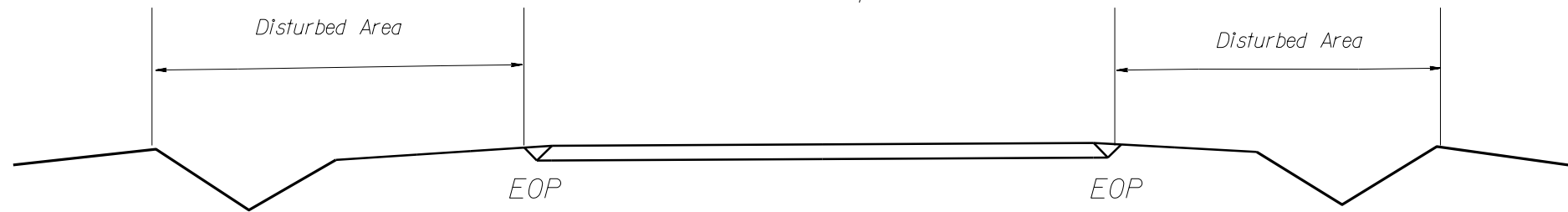
NOTES: Less than 5' - 10' undisturbed buffer from ROW, ditchline, water feature, or drainage inlet, add BMP.

BMP Options: Wattle or Silt Fence

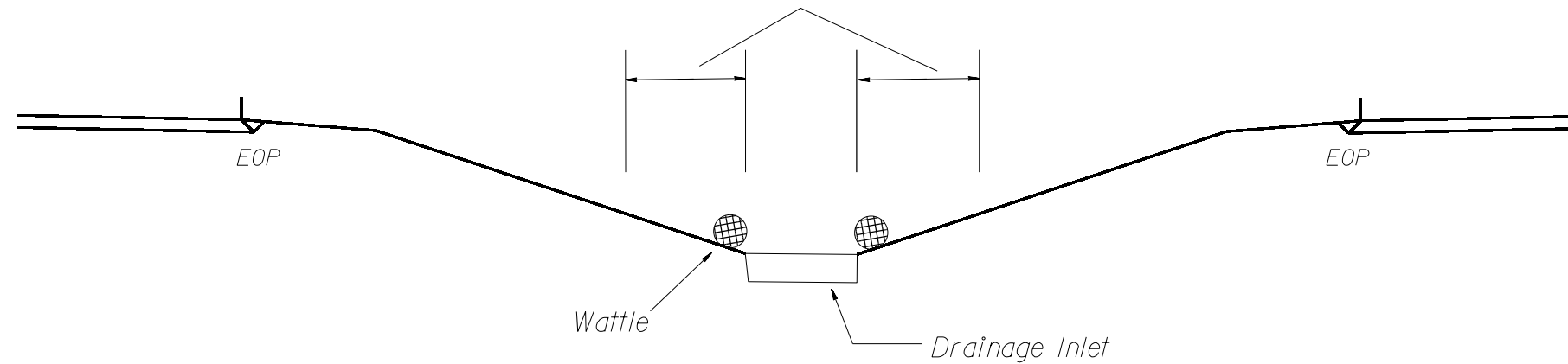
EROSION CONTROL DETAIL



Use BMP's if shoulders and/or frontslopes and/or ditchline and/or backslopes are disturbed

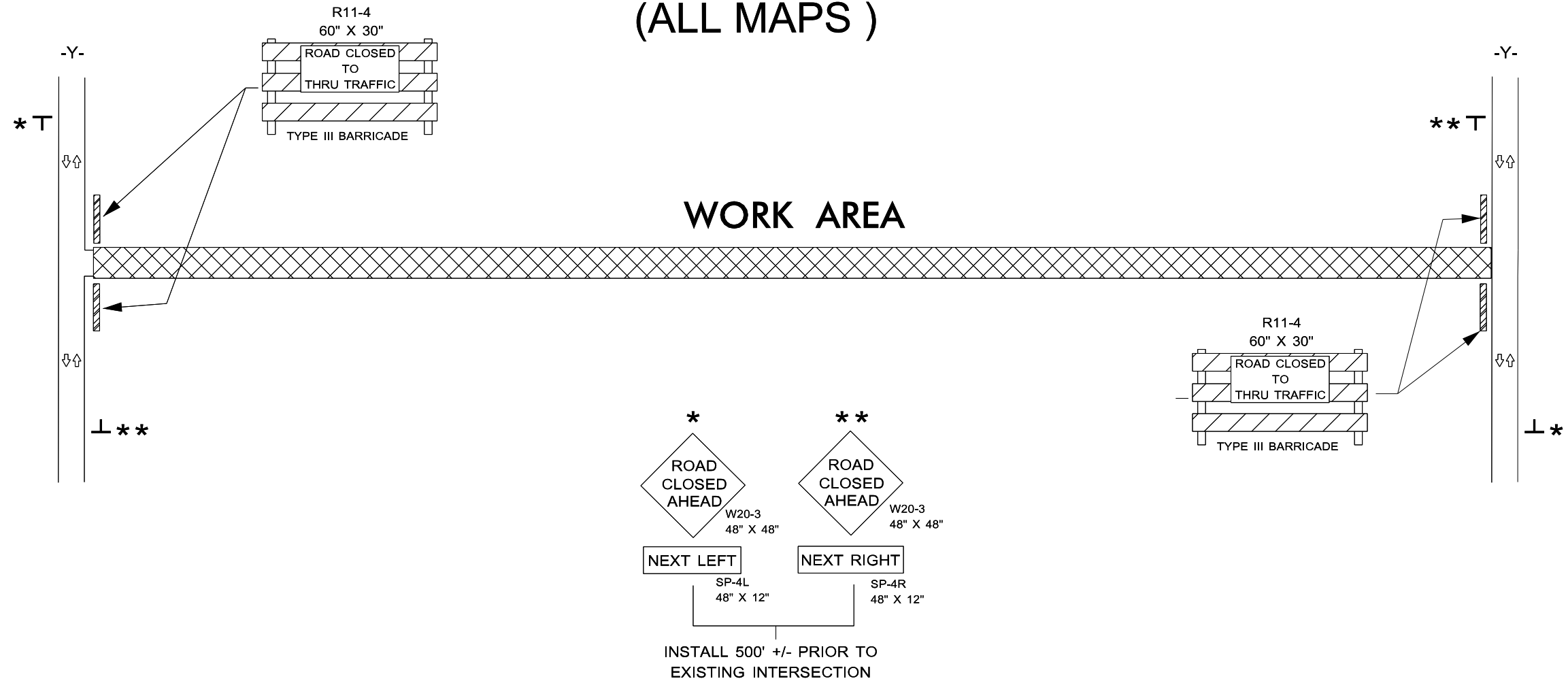


< 5' - 10' Undisturbed buffer from inlet, add wattle



NOT TO SCALE

ROAD CLOSURE (ALL MAPS)



ROADWAY STANDARD DRAWINGS

THE FOLLOWING ROADWAY STANDARDS AS SHOWN IN "2018 NCDOT STANDARD ROADWAY DRAWINGS" ARE APPLICABLE TO THIS PROJECT AND BY REFERENCE HEREBY ARE CONSIDERED A PART OF THESE PLANS:

STD. NO.	TITLE
1101.03	TEMPORARY ROAD CLOSURES
1101.04	TEMPORARY SHOULDER CLOSURES
1110.01	STATIONARY WORK ZONE SIGNS
1110.02	PORTABLE WORK ZONE SIGNS
1135.01	CONES
1145.01	BARRICADES
904.10	ORIENTATION OF GROUND MOUNTED SIGNS

GENERAL NOTES

1. PROVIDE A MINIMUM 21 CALENDAR DAY NOTICE TO STATE FORCES BEFORE A ROADWAY IS CLOSED TO TRAFFIC SUCH THAT THE NECESSARY PROVISIONS CAN BE MADE TO INFORM LOCAL EMERGENCY AND LAW ENFORCEMENT PERSONNEL, SCHOOLS OR ANY OTHER PARTIES AFFECTED BY THE ROAD CLOSURE.
2. INSTALL SIGNS BEFORE THE BARRICADES WHEN CLOSING THE ROADWAY TO TRAFFIC. REMOVE BARRICADES BEFORE SIGNS WHEN OPENING THE ROADWAY TO TRAFFIC. INSTALL/REMOVE SIGNS AND BARRICADES WITHIN THE SAME CALENDAR DAY.
3. SEE STANDARD SPECIFICATION 1089-1 FOR WORK ZONE SIGNS.
4. SEE STANDARD SPECIFICATION 1089-2 FOR WORK ZONE SIGN SUPPORTS.

LEGEND

	DIRECTION OF TRAFFIC FLOW
	BARRICADE (TYPE III)
	STATIONARY MOUNTED SIGN