

09/08/09

CONTRACT NO.: DA00197 WBS ELEMENT: 45458.3.1

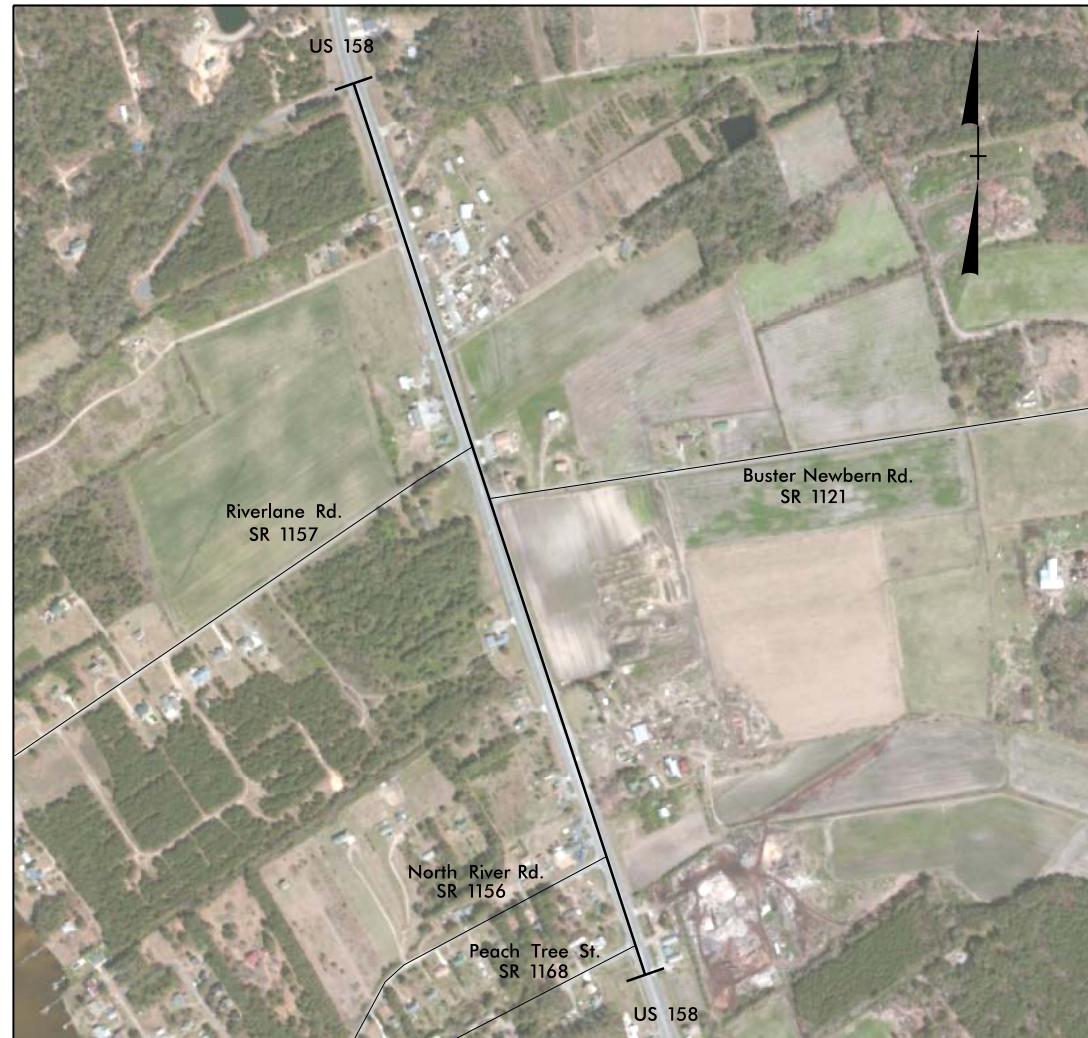
STATE OF NORTH CAROLINA
DIVISION OF HIGHWAYS

CURRITUCK COUNTY

**LOCATION: US 158 FROM 200 FEET SOUTH OF SR 1168 TO 4200 FEET NORTH
NORTH BOUND OUTSIDE LANE ONLY**

TYPE OF WORK: MILLING & RESURFACING

STATE	STATE PROJECT REFERENCE NO.	SHEET NO.
N.C.	45458.3.1	1
STATE PROJ. NO.	F.A. PROJ. NO.	DESCRIPTION
R-5517	NHS-U158(54)	



NTS

PROJECT LENGTH

LENGTH OF ROADWAY PROJECT = 4200 FEET

Prepared in the Office of:
DIVISION OF HIGHWAYS
113 Airport Dr., Edenton NC, 27932

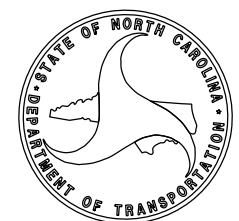
2012 STANDARD SPECIFICATIONS

LETTING DATE:

W.B. HOBBS, P.E.
DIVISION PROJECT MANAGER

C.E. SLACHTA
DIVISION PROPOSALS ENGINEER

**DIVISION OF HIGHWAYS
STATE OF NORTH CAROLINA**



C O N T R A C T P A V E M E N T S C H E D U L E

B	PROP. APPROX. 1" OPEN-GRADED ASPHALT FRICTION COURSE, TYPE FC 2 MODIFIED, AT AN AVERAGE RATE OF 90 LBS. PER SQ. YD.
V	MILLING BITUMINOUS PAVEMENT 1" DEPTH.
U	EXISTING PAVEMENT.

PAVEMENT SCHEDULE

B	PROP. APPROX. 1" OPEN-GRADED ASPHALT FRICTION COURSE, TYPE FC 2 MODIFIED, AT AN AVERAGE RATE OF 90 LBS. PER SQ. YD.
V	MILLING BITUMINOUS PAVEMENT 1" DEPTH.
U	EXISTING PAVEMENT.

PROJECT REFERENCE NO.

45458.3.1

SHEET NO.

3

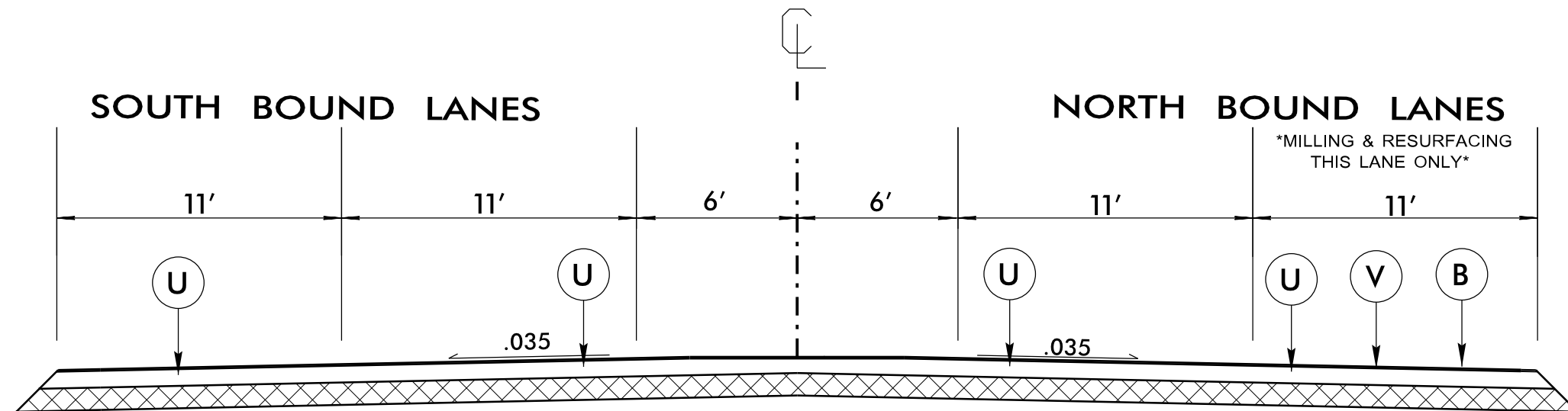
NOTES:

*ALL PAVED S.R. ROADS TO BE RESURFACED TO THE ENDS OF THE RADI., OR AS DIRECTED BY THE ENGINEER

*EDGES, PAVEMENT WIDENING, INTERSECTIONS, AND BRIDGE FLARES ARE INCLUDED IN THE TABLE OF QUANTITIES

*PAVEMENT EDGE SLOPES ARE 1:1 UNLESS SHOWN OTHERWISE

*MILLING DEPTH WILL BE VARIABLE 0-1"



TYPICAL SECTION NO.1

NTS

20-JUN-2014 11:34 E:\District1\ paving_Maps\2014\Friction Course Repair\FrictionCourseRepair.dgn