

08-JUL-2013 13:46
 C:\D\C\CurrentProjects\DIVISION PROJECT WORKING FILES\District Three\DA00164 Martin & Washington Remaing Funds (2013)\1 Pre-Bid Documents\DA00164_Title & Typical.s.dgn
 cslachta AT DICAD257101L

CONTRACT NO.: DA00164 WBS ELEMENT: ICR.20581.51, ETC.



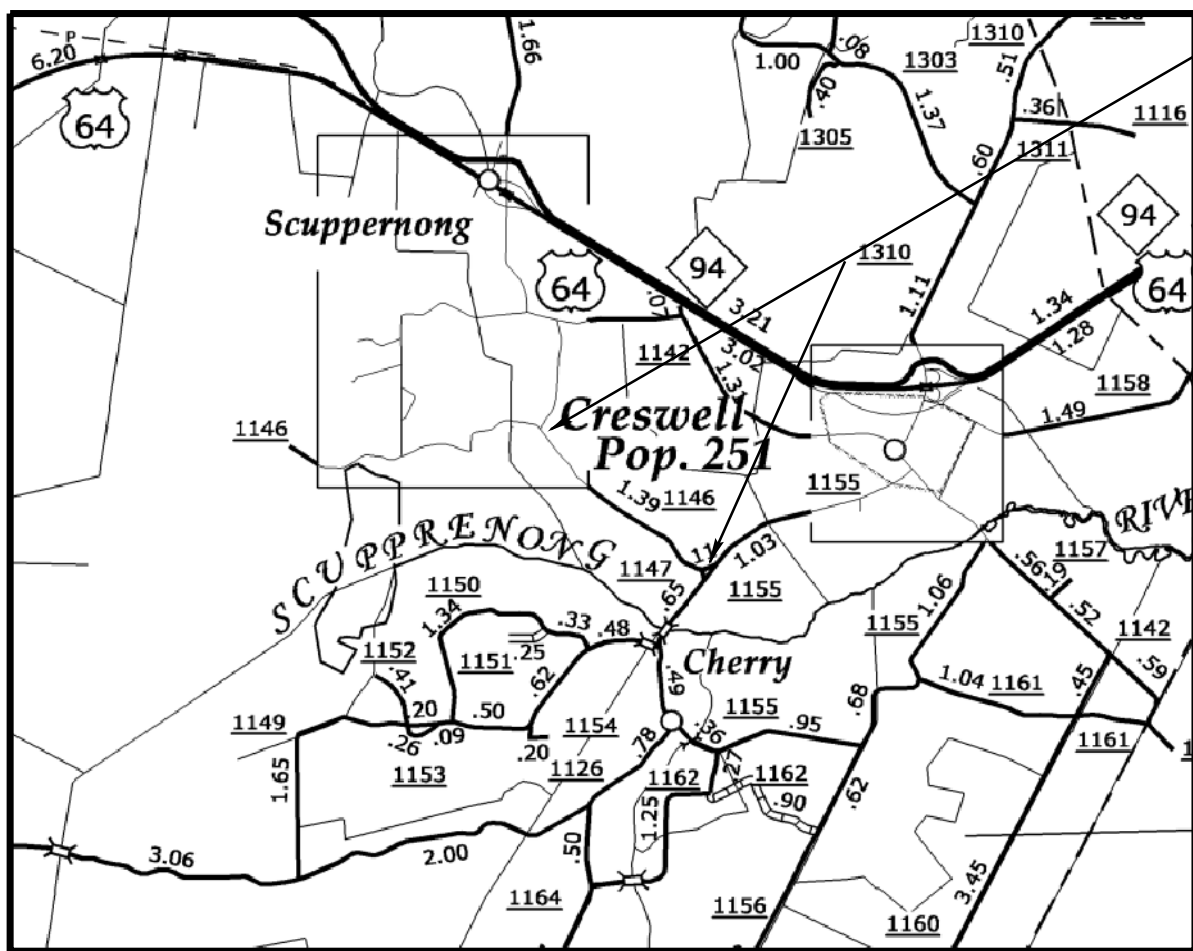
STATE OF NORTH CAROLINA
 DIVISION OF HIGHWAYS

WASHINGTON COUNTY

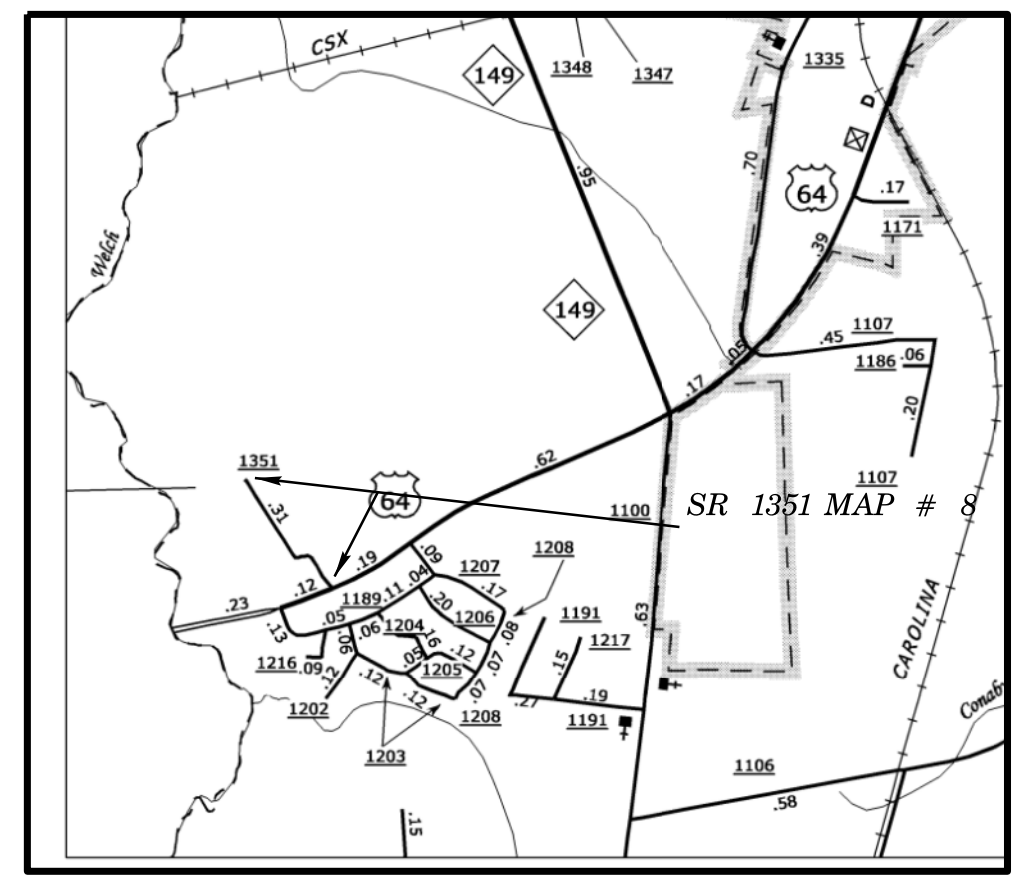
LOCATION: MAP #7 SR 1146 FROM SR 1155 TO SR 1148
 MAP #8 SR 1351 FROM US 64 TO DEAD END

TYPE OF WORK: MILLING, RESURFACING AND PAVEMENT MARKINGS

STATE	STATE PROJECT REFERENCE NO.	SHEET NO.	TOTAL SHEETS
N.C.	1CR.20581.51, ETC.	2	6
STATE PROJ. NO.	F.A. PROJ. NO.	DESCRIPTION	



SR 1146 MAP # 7

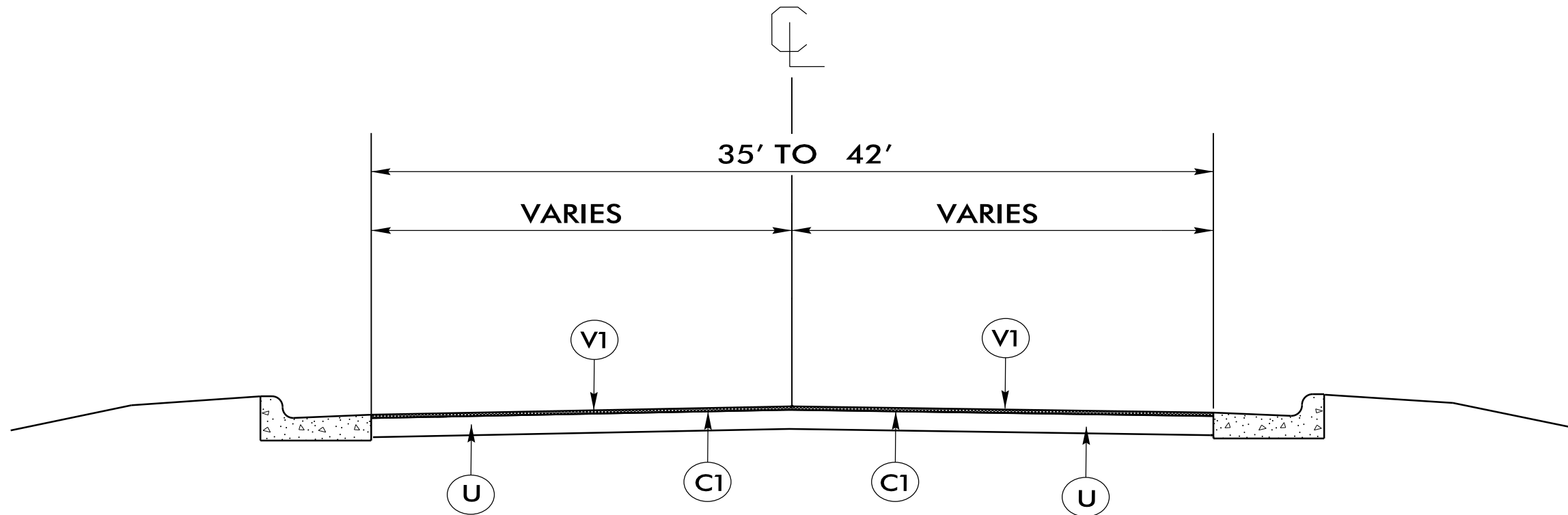


NOTES:

1. ALL PAVED S.R. ROADS TO BE RESURFACED TO THE ENDS OF THE RADII OR AS DIRECTED BY THE ENGINEER
2. EDGES, PAVEMENT WIDENING, INTERSECTIONS, AND BRIDGE FLARES ARE INCLUDED IN THE TABLE OF QUANTITIES
3. CONTRACTOR SHALL MILL 1.5" BELOW THE EDGE OF THE CURB & GUTTER
4. PAVEMENT EDGE SLOPES ARE 1:1 UNLESS SHOWN OTHERWISE
5. SHOULDERS AND DITCHES ARE TO BE CONSTRUCTED BY OTHERS

PROJECT REFERENCE NO.	SHEET NO.
1CR.20581.51, ETC.	3 OF 6

PAVEMENT SCHEDULE	
C1	PROP. APPROX. 1.5" ASPHALT CONCRETE SURFACE COURSE TYPE SF9.5A, AT AN AVERAGE RATE OF 165 LBS. PER SQ.YD.
V1	MILLING BITUMINOUS PAVEMENT 1.5" DEPTH
U	EXISTING PAVEMENT.



TYPICAL SECTION #1

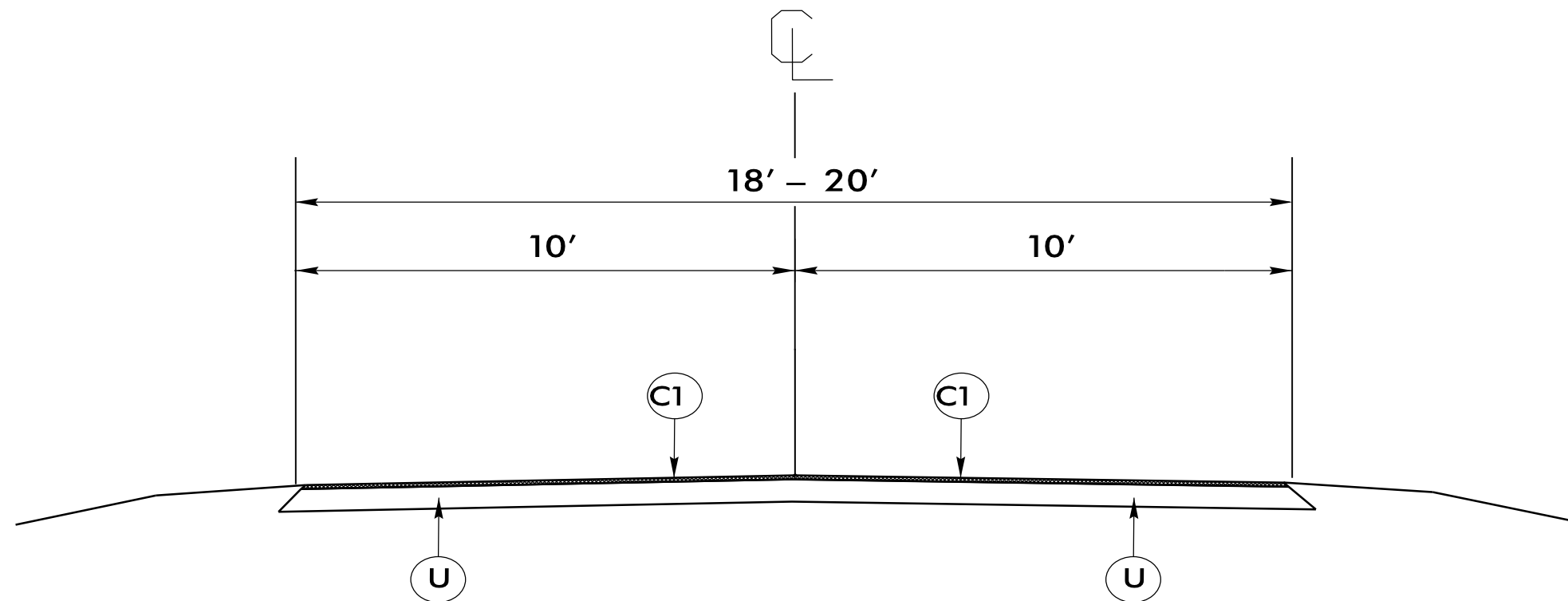
USE WITH MAP 2 & 3

NOTES:

1. ALL PAVED S.R. ROADS TO BE RESURFACED TO THE ENDS OF THE RADII OR AS DIRECTED BY THE ENGINEER
2. EDGES, PAVEMENT WIDENING, INTERSECTIONS, AND BRIDGE FLARES ARE INCLUDED IN THE TABLE OF QUANTITIES
3. PAVEMENT EDGE SLOPES ARE 1:1 UNLESS SHOWN OTHERWISE
4. SHOULDERS AND DITCHES ARE TO BE CONSTRUCTED BY OTHERS

PROJECT REFERENCE NO.	SHEET NO.
1CR.20581.51, ETC.	4 OF 6

PAVEMENT SCHEDULE	
C1	PROP. APPROX. 1.5" ASPHALT CONCRETE SURFACE COURSE TYPE SF9.5A, AT AN AVERAGE RATE OF 165 LBS. PER SQ.YD.
U	EXISTING PAVEMENT.



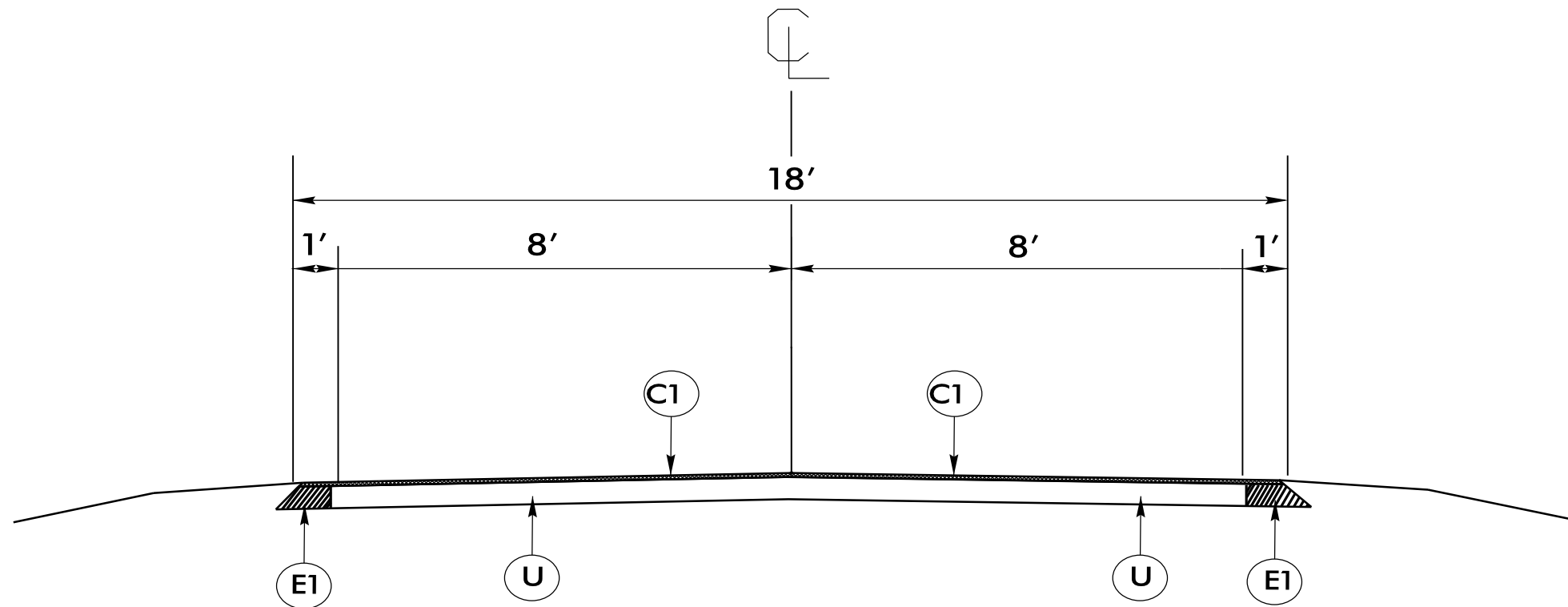
TYPICAL SECTION #2
USE WITH MAPS 1, 4, 5, 6 & 8

NOTES:

1. ALL PAVED S.R. ROADS TO BE RESURFACED TO THE ENDS OF THE RADII OR AS DIRECTED BY THE ENGINEER
2. EDGES, PAVEMENT WIDENING, INTERSECTIONS, AND BRIDGE FLARES ARE INCLUDED IN THE TABLE OF QUANTITIES
3. PAVEMENT EDGE SLOPES ARE 1:1 UNLESS SHOWN OTHERWISE
4. SHOULDERS AND DITCHES ARE TO BE CONSTRUCTED BY OTHERS

PROJECT REFERENCE NO.	SHEET NO.
1CR.20581.51, ETC.	5 OF 6

PAVEMENT SCHEDULE	
C1	PROP. APPROX. 1.5" ASPHALT CONCRETE SURFACE COURSE TYPE SF9.5 A, AT AN AVERAGE RATE OF 165 LBS. PER SQ.YD
E1	PROPOSED APPROX. 5.5" ASPHALT CONCRETE BASE COURSE TYPE B 25.0 B, AT AVERAGE RATE OF 627 LBS.PER SQ.YD
U	EXISTING PAVEMENT.



TYPICAL SECTION #3

USE WITH MAP 7

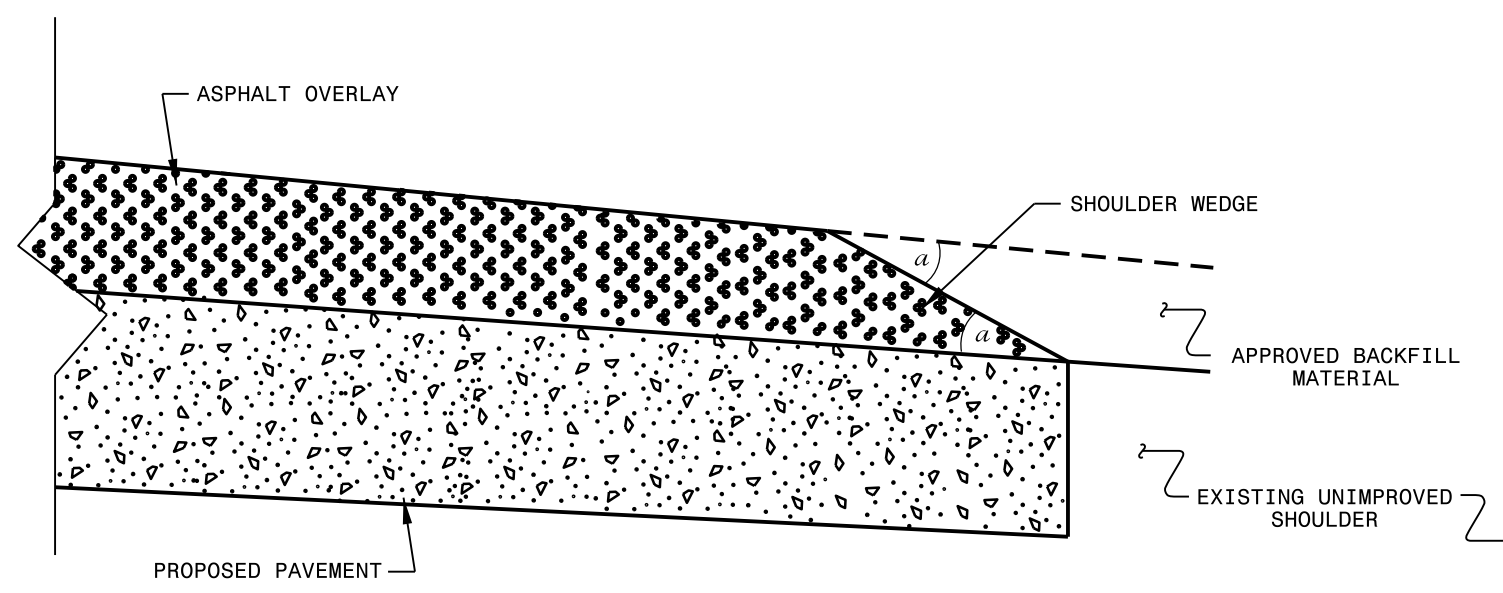
PROJECT NO.	SHEET NO.	TOTAL NO.
1CR.20581.51, ETC.	6	6

SUMMARY OF QUANTITIES

PROJECT NO	COUNTY	MAP NO	ROUTE	DESCRIPTION	TYP	LANES	FINAL SURFACE TESTING REQUIRED	WARM MIX ASPHALT REQUIRED	LENGTH MI	WIDTH FT	MOBILIZATION LS	1½" MILLING SY	INCIDENTAL MILLING SY	BASE COURSE, B25.0B TONS	SURFACE COURSE, SF9.5A TONS	ASPHALT BINDER FOR PLANT MIX TONS	2'-6" CURB & GUTTER LF	CONCRETE CURB RAMPS EA	ADJ. OF MANHOLES EA	TEMPORARY SILT FENCE LF	INDUCTIVE LOOP SAWCUT LF	LEAD-IN CABLE (18-2) LF
1CR.20581.51	Martin	1	SR 1138	FROM EVERETTS NORTH C/L TO BEG CURD & GUTTER	2	2	NO	NO	0.19	20	1				204	14						
1CR.20581.51	Martin	2	SR 1138	FROM BEG CURB & GUTTER TO END CURB & GUTTER	1	2	NO	NO	0.04	35	*	821			78	5	60	4				
1CR.20581.51	Martin	3	SR 1138	FROM US 64 BEG CURB & GUTTER TO END CURB & GUTTER	1	2	NO	NO	0.19	42	*	4,682	1,339		426	29	120	4	4		1,000	400
1CR.20581.51	Martin	4	SR 1138	END CURB & GUTTER TO SR 1113	2	2	NO	NO	1	20	*				1,072	72						
1CR.20581.52	Martin	5	SR 1142	FROM NC125 TO SR 1106	2	2	NO	NO	1.48	20	*				1,586	106						
1CR.20581.53	Martin	6	SR 1139	FROM SR 1142 TO PAVEMENT CHANGES	2	2	NO	NO	1.46	20	*				1,564	105						
1CR.20941.19	Washington	7	SR 1146	FROM SR 1155 TO SR 1148	3	2	NO	NO	1.5	18	*			790	1,452	132				1,000		
1CR.20941.20	Washington	8	SR 1351	FROM US 64 TO DEAD END	2	2	NO	NO	0.3	18	*				289	19						
GRAND TOTAL									6.16		1	5,503	1,339	790	6,671	482	180	8	4	1,000	1,000	400

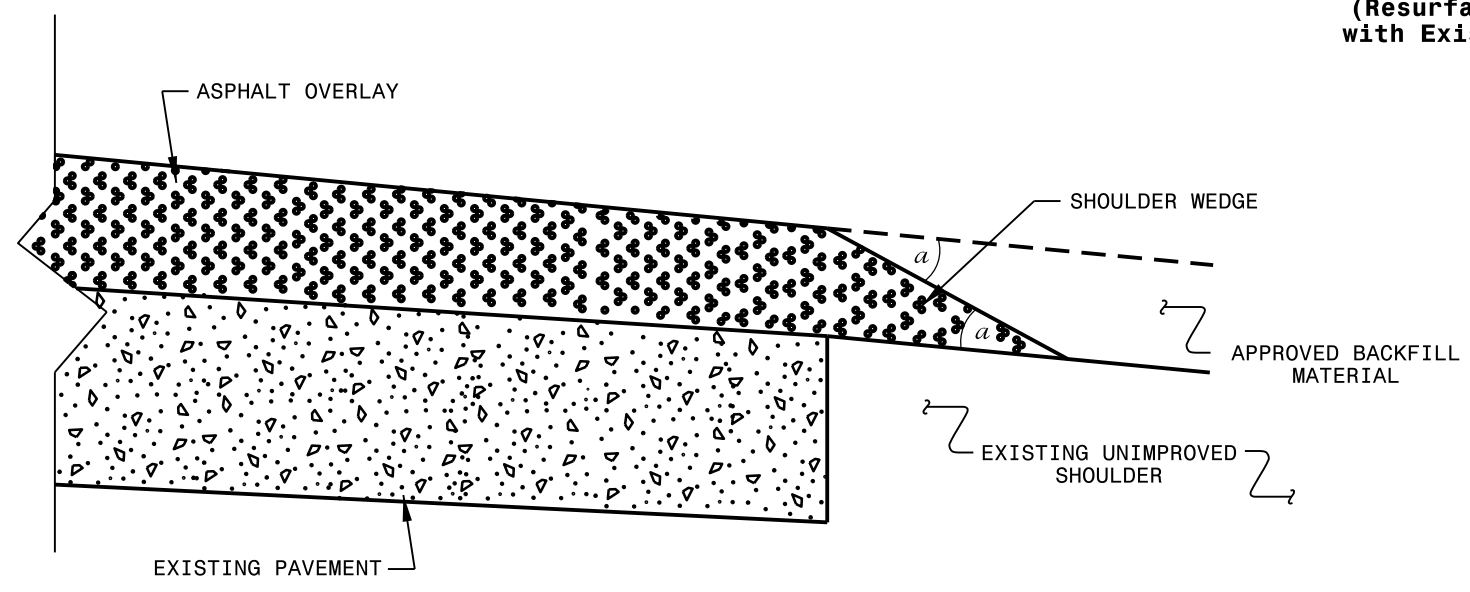
THERMOPLASTIC AND PAINT QUANTITIES

PROJECT NO	COUNTY	MAP NO	ROUTE	DESCRIPTION	TYP	LANES	LENGTH	WIDTH	TEMPORARY TRAFFIC CONTROL LS	4" WHITE PAINT LF	4" YELLOW PAINT LF	16" WHITE PAINT LF	24" WHITE PAINT LF	PAINT MSG RXR EA
1CR.20581.51	Martin	1	SR 1138	FROM EVERETTS NORTH C/L TO BEG CURD & GUTTER	2	2	0.19	20	1					
1CR.20581.51	Martin	2	SR 1138	FROM BEG CURB & GUTTER TO END CURB & GUTTER	1	2	0.04	35	*	2,167	2,146	180	142	4
1CR.20581.51	Martin	3	SR 1138	FROM US 64 BEG CURB & GUTTER TO END CURB & GUTTER	1	2	0.19	42	*	10,798	11,251		100	
1CR.20581.51	Martin	4	SR 1138	END CURB & GUTTER TO SR 1113	2	2	1	20	*					
1CR.20581.52	Martin	5	SR1142	FROM NC125 TO SR 1106	2	2	1.48	20	*	15,940	8,599			
1CR.20581.53	Martin	6	SR 1139	FROM SR 1142 TO PAVEMENT CHANGES	2	2	1.46	20	*	15,940	8,599			
1CR.20941.19	Washington	7	SR 1146	FROM SR 1155 TO SR 1148	3	2	1.5	18	*	16,150	11,406			
1CR.20941.20	Washington	8	SR1351	FROM US 64 TO DEAD END	2	2	0.3	18	*					
GRAND TOTAL							6.16		1	60,995	42,001	180	242	4
										102,996				



SHOULDER WEDGE DETAIL

(Resurfacing Projects w/ Widening or with Existing Paved Shoulder > 2 ft.)



SHOULDER WEDGE DETAIL

(Resurfacing Projects w/ NO Widening)

- NOTES:
- 1) DETAIL DOES NOT APPLY TO OGAFB AND ULTRA-THIN BONDED WEARING COURSE.
 - 2) BACKFILL SHOULDER WITH APPROVED MATERIAL.
 - 3) THE SHOULDER WEDGE DEVICE MAY BE DISENGAGED AT PAVED DRIVEWAYS AND SIDE STREETS.

a - SHOULDER WEDGE ANGLE = 30°

CONTRACT STANDARDS AND DEVELOPMENT UNIT	
Office 919-707-6950	FAX 919-250-4119
SHOULDER WEDGE DETAILS	
ORIGINAL BY: T.SPELL	DATE: 7-19-11
MODIFIED BY:	DATE: 10/16/12
CHECKED BY:	DATE:
FILE SPEC.: susr/details/stand/shoulderwedgedetail.dgn	

SYSTEMS DESIGN CONSULTANTS
 11000 RIVERCHASE DRIVE
 SUITE 100
 DALLAS, TEXAS 75244
 TEL: 972.342.2200
 FAX: 972.342.2201
 WWW.SDCON.COM