

REFERENCE: SF-470035

PROJECT: 17BP.1.R.83

CONTENTS

<u>SHEET NO.</u>	<u>DESCRIPTION</u>
1	TITLE SHEET
2	LEGEND (SOIL & ROCK)
3	SITE PLAN
4	PROFILE
5-6	BORE LOGS

STATE OF NORTH CAROLINA
DEPARTMENT OF TRANSPORTATION
DIVISION OF HIGHWAYS
GEOTECHNICAL ENGINEERING UNIT

STRUCTURE
SUBSURFACE INVESTIGATION

COUNTY HYDE
PROJECT DESCRIPTION BRIDGE NO. 35 ON -L- (SR 1143)
OVER BRANCH OF SLADES CREEK

STATE	STATE PROJECT REFERENCE NO.	SHEET NO.	TOTAL SHEETS
N.C.	SF-470035	1	6

CAUTION NOTICE

THE SUBSURFACE INFORMATION AND THE SUBSURFACE INVESTIGATION ON WHICH IT IS BASED WERE MADE FOR THE PURPOSE OF STUDY, PLANNING AND DESIGN, AND NOT FOR CONSTRUCTION OR PAY PURPOSES. THE VARIOUS FIELD BORING LOGS, ROCK CORES AND SOIL TEST DATA AVAILABLE MAY BE REVIEWED OR INSPECTED IN RALEIGH BY CONTACTING THE N. C. DEPARTMENT OF TRANSPORTATION, GEOTECHNICAL ENGINEERING UNIT AT (919) 707-6850. THE SUBSURFACE PLANS AND REPORTS, FIELD BORING LOGS, ROCK CORES AND SOIL TEST DATA ARE NOT PART OF THE CONTRACT.

GENERAL SOIL AND ROCK STRATA DESCRIPTIONS AND INDICATED BOUNDARIES ARE BASED ON A GEOTECHNICAL INTERPRETATION OF ALL AVAILABLE SUBSURFACE DATA AND MAY NOT NECESSARILY REFLECT THE ACTUAL SUBSURFACE CONDITIONS BETWEEN BORINGS OR BETWEEN SAMPLED STRATA WITHIN THE BOREHOLE. THE LABORATORY SAMPLE DATA AND THE IN SITU (IN-PLACE) TEST DATA CAN BE RELIED ON ONLY TO THE DEGREE OF RELIABILITY INHERENT IN THE STANDARD TEST METHOD. THE OBSERVED WATER LEVELS OR SOIL MOISTURE CONDITIONS INDICATED IN THE SUBSURFACE INVESTIGATIONS ARE AS RECORDED AT THE TIME OF THE INVESTIGATION. THESE WATER LEVELS OR SOIL MOISTURE CONDITIONS MAY VARY CONSIDERABLY WITH TIME ACCORDING TO CLIMATIC CONDITIONS INCLUDING TEMPERATURES, PRECIPITATION AND WIND, AS WELL AS OTHER NON-CLIMATIC FACTORS.

THE BIDDER OR CONTRACTOR IS CAUTIONED THAT DETAILS SHOWN ON THE SUBSURFACE PLANS ARE PRELIMINARY ONLY AND IN MANY CASES THE FINAL DESIGN DETAILS ARE DIFFERENT. FOR BIDDING AND CONSTRUCTION PURPOSES, REFER TO THE CONSTRUCTION PLANS AND DOCUMENTS FOR FINAL DESIGN INFORMATION ON THIS PROJECT. THE DEPARTMENT DOES NOT WARRANT OR GUARANTEE THE SUFFICIENCY OR ACCURACY OF THE INVESTIGATION MADE, NOR THE INTERPRETATIONS MADE, OR OPINION OF THE DEPARTMENT AS TO THE TYPE OF MATERIALS AND CONDITIONS TO BE ENCOUNTERED. THE BIDDER OR CONTRACTOR IS CAUTIONED TO MAKE SUCH INDEPENDENT SUBSURFACE INVESTIGATIONS AS HE DEEMS NECESSARY TO SATISFY HIMSELF AS TO CONDITIONS TO BE ENCOUNTERED ON THE PROJECT. THE CONTRACTOR SHALL HAVE NO CLAIM FOR ADDITIONAL COMPENSATION OR FOR AN EXTENSION OF TIME FOR ANY REASON RESULTING FROM THE ACTUAL CONDITIONS ENCOUNTERED AT THE SITE DIFFERING FROM THOSE INDICATED IN THE SUBSURFACE INFORMATION.

- NOTES:
1. THE INFORMATION CONTAINED HEREIN IS NOT IMPLIED OR GUARANTEED BY THE N. C. DEPARTMENT OF TRANSPORTATION AS ACCURATE NOR IS IT CONSIDERED PART OF THE PLANS, SPECIFICATIONS OR CONTRACT FOR THE PROJECT.
 2. BY HAVING REQUESTED THIS INFORMATION, THE CONTRACTOR SPECIFICALLY WAIVES ANY CLAIMS FOR INCREASED COMPENSATION OR EXTENSION OF TIME BASED ON DIFFERENCES BETWEEN THE CONDITIONS INDICATED HEREIN AND THE ACTUAL CONDITIONS AT THE PROJECT SITE.

PERSONNEL

C.J. CORNETTE
R.E. SMITH
J.M. EDMONDSON

INVESTIGATED BY T.C. BOTTOMS
DRAWN BY T.C. BOTTOMS
CHECKED BY D.N. ARGENBRIGHT
SUBMITTED BY D.N. ARGENBRIGHT
DATE JULY 2017

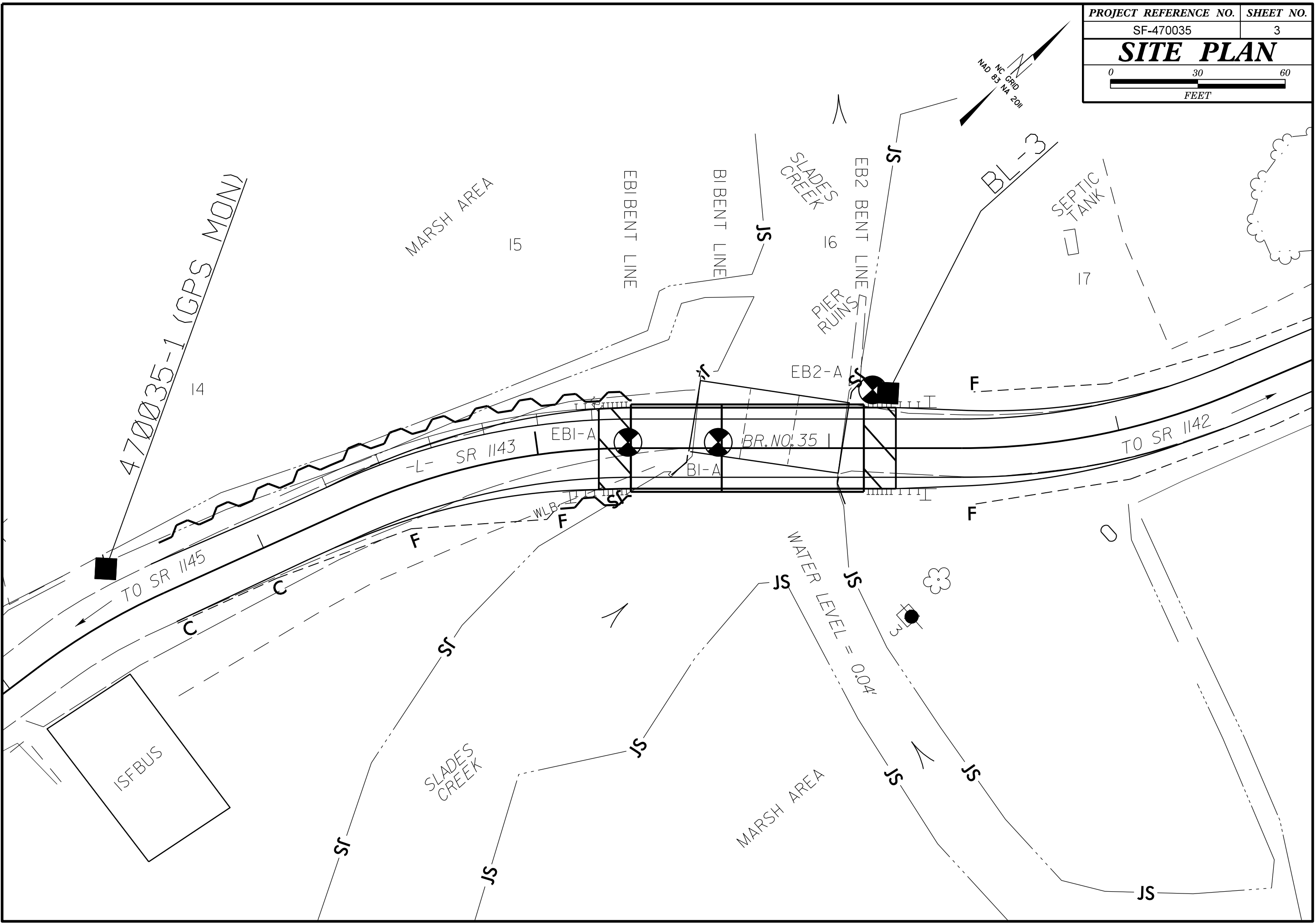
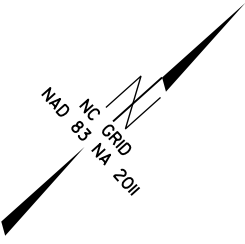


DocuSigned by:
Tyler Bottoms 7/6/2017
48A2D3BD088EFA09 SIGNATURE DATE

**DOCUMENT NOT CONSIDERED FINAL
UNLESS ALL SIGNATURES COMPLETED**

NORTH CAROLINA DEPARTMENT OF TRANSPORTATION
DIVISION OF HIGHWAYS
GEOTECHNICAL ENGINEERING UNIT
SUBSURFACE INVESTIGATION
SOIL AND ROCK LEGEND, TERMS, SYMBOLS, AND ABBREVIATIONS

Table with columns: SOIL DESCRIPTION, GRADATION, ROCK DESCRIPTION, TERMS AND DEFINITIONS, SOIL LEGEND AND AASHTO CLASSIFICATION, MINERALOGICAL COMPOSITION, COMPRESSIBILITY, PERCENTAGE OF MATERIAL, GROUND WATER, MISCELLANEOUS SYMBOLS, RECOMMENDATION SYMBOLS, ABBREVIATIONS, EQUIPMENT USED ON SUBJECT PROJECT, FRACTURE SPACING, BEDDING, INDOURATION, PLASTICITY, COLOR.

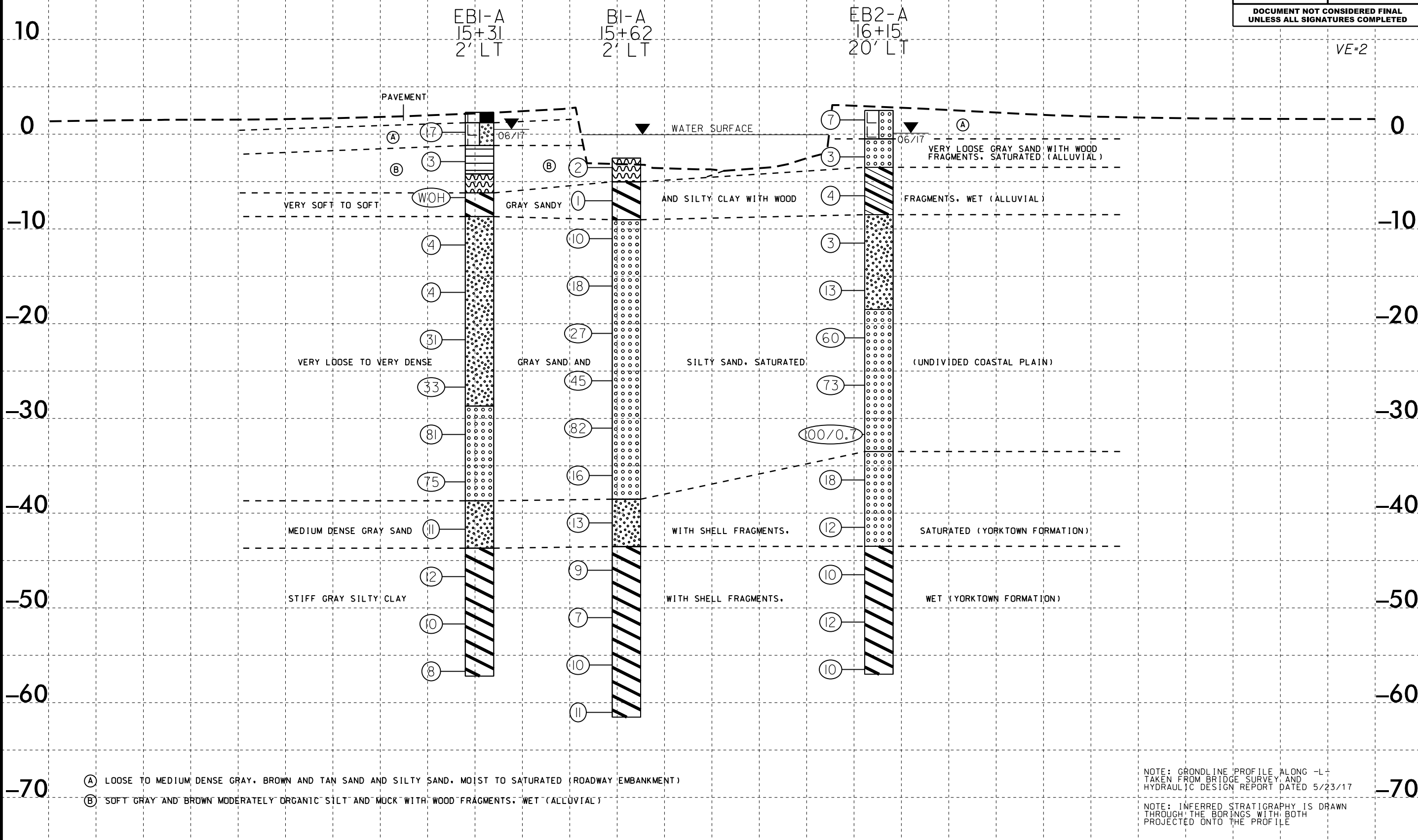


5/14/99

PROJECT REFERENCE NO. SF-470035	SHEET NO. 4
ROADWAY DESIGN ENGINEER	HYDRAULICS ENGINEER
INCOMPLETE PLANS DO NOT USE FOR R/W ACQUISITION	
DOCUMENT NOT CONSIDERED FINAL UNLESS ALL SIGNATURES COMPLETED	

PROFILE THROUGH BORINGS PROJECTED ALONG -L-

VE-2



- (A) LOOSE TO MEDIUM DENSE GRAY, BROWN AND TAN SAND AND SILTY SAND, MOIST TO SATURATED (ROADWAY EMBANKMENT)
- (B) SOFT GRAY AND BROWN MODERATELY ORGANIC SILT AND MUCK WITH WOOD FRAGMENTS, WET (ALLUVIAL)

NOTE: GROUNDLINE PROFILE ALONG -L- TAKEN FROM BRIDGE SURVEY AND HYDRAULIC DESIGN REPORT DATED 5/23/17

NOTE: INFERRED STRATIGRAPHY IS DRAWN THROUGH THE BORINGS WITH BOTH PROJECTED ONTO THE PROFILE

06-JUL-2017 09:29
 S:\ERU\Greenville_S\470035\GEO\BRDG_0035\CADD_GEO\TECHN\Plan\Profile\17BP-1.R.83.Rdy_pfl.dgn
 \$\$\$\$

15

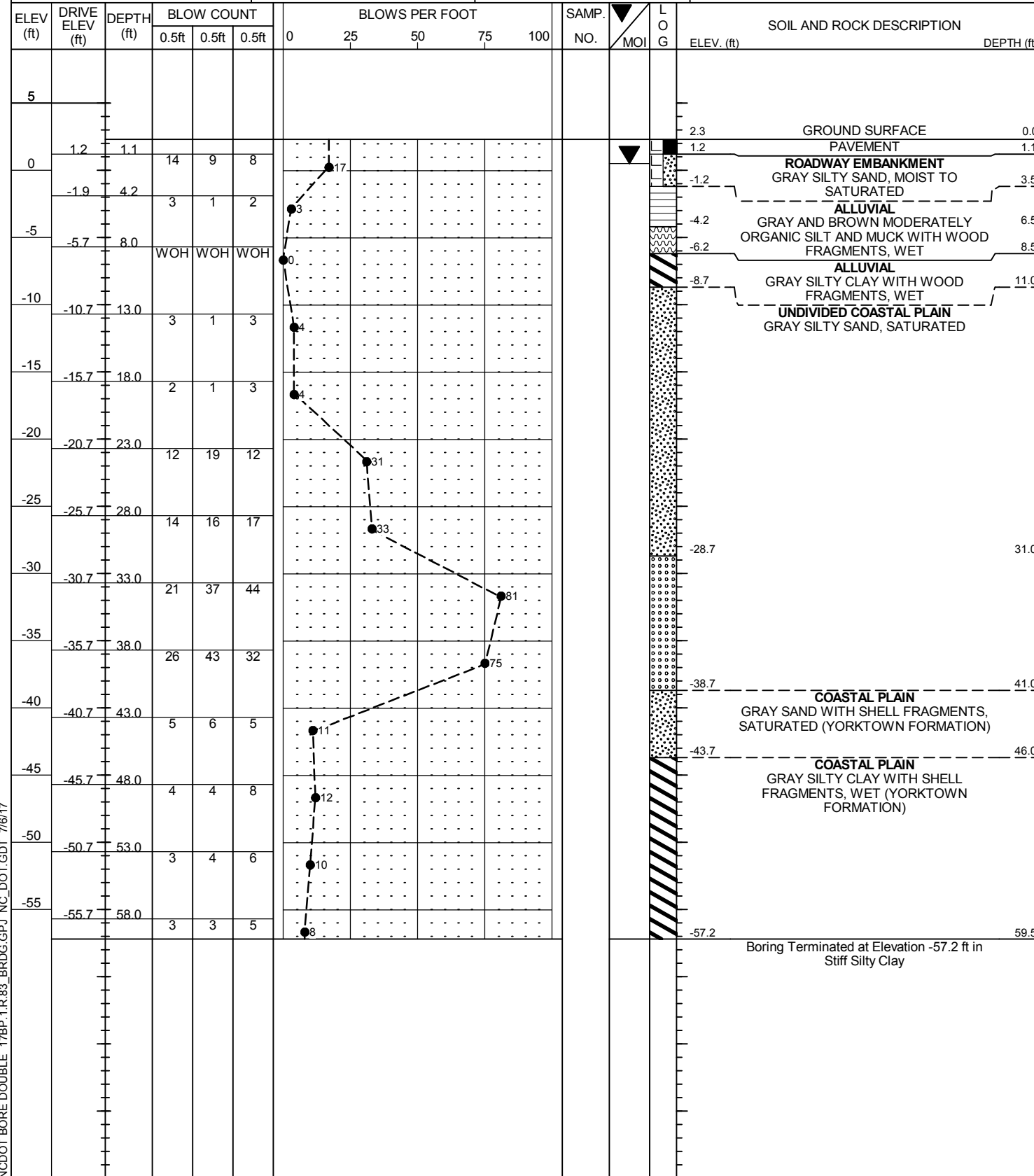
16

17

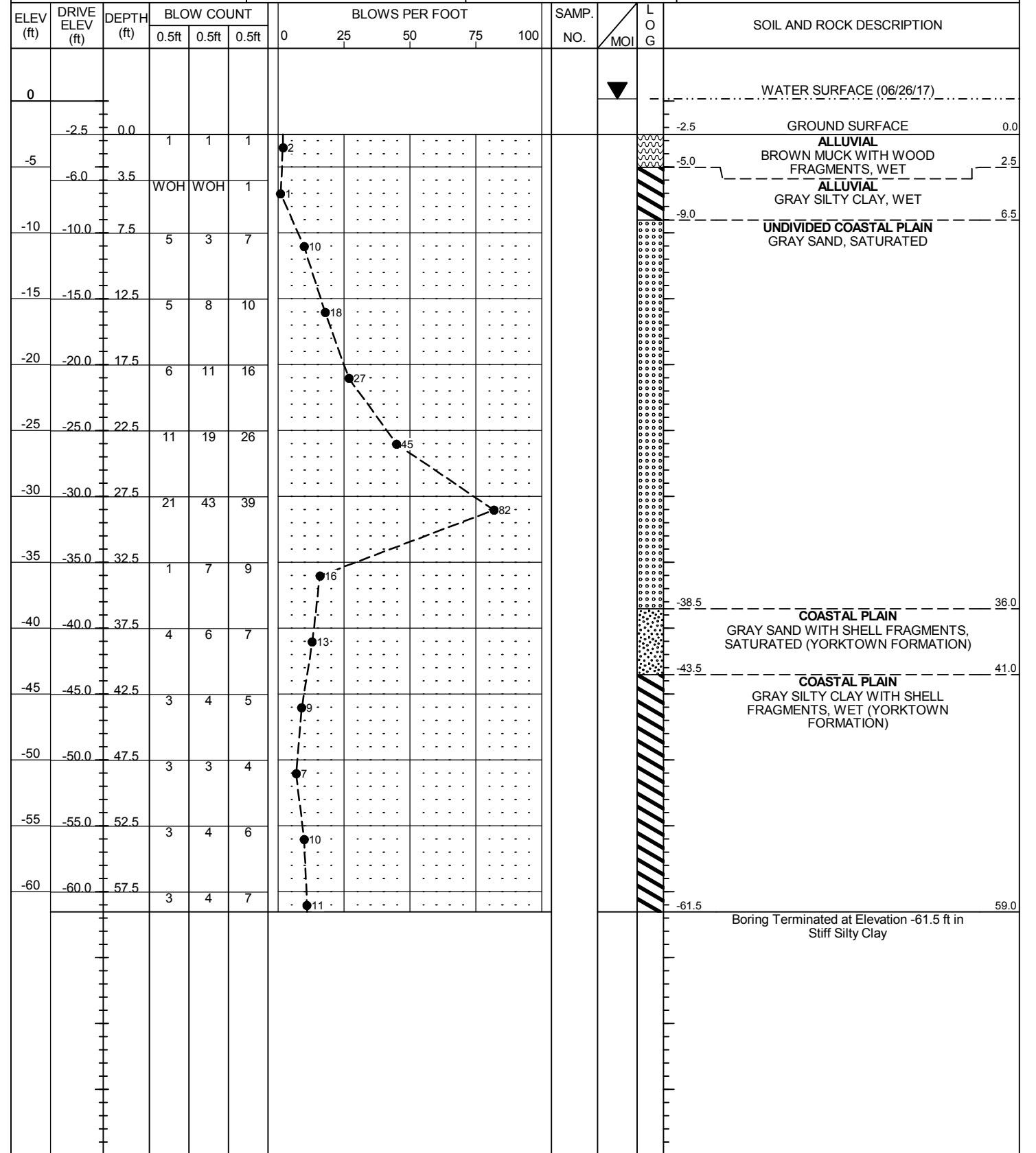
GEOTECHNICAL BORING REPORT

BORE LOG

WBS 17BP.1.R.83	TIP SF-470035	COUNTY HYDE	GEOLOGIST Cornette, C. J.
SITE DESCRIPTION BRIDGE NUMBER 35 ON -L- (SR 1143) OVER BRANCH OF SLADES CREEK			GROUND WTR (ft)
BORING NO. EB1-A	STATION 15+31	OFFSET 2 ft LT	ALIGNMENT -L-
COLLAR ELEV. 2.3 ft	TOTAL DEPTH 59.5 ft	NORTHING 632,758	EASTING 2,747,247
DRILL RIG/HAMMER EFF./DATE GFO0057 CME-550X 76% 06/13/2017		DRILL METHOD Mud Rotary	HAMMER TYPE Automatic
DRILLER Edmondson, J. M.	START DATE 06/23/17	COMP. DATE 06/26/17	SURFACE WATER DEPTH N/A



WBS 17BP.1.R.83	TIP SF-470035	COUNTY HYDE	GEOLOGIST Cornette, C. J.
SITE DESCRIPTION BRIDGE NUMBER 35 ON -L- (SR 1143) OVER BRANCH OF SLADES CREEK			GROUND WTR (ft)
BORING NO. B1-A	STATION 15+62	OFFSET 2 ft LT	ALIGNMENT -L-
COLLAR ELEV. -2.5 ft	TOTAL DEPTH 59.0 ft	NORTHING 632,781	EASTING 2,747,268
DRILL RIG/HAMMER EFF./DATE GFO0057 CME-550X 76% 06/13/2017		DRILL METHOD Mud Rotary	HAMMER TYPE Automatic
DRILLER Edmondson, J. M.	START DATE 06/26/17	COMP. DATE 06/26/17	SURFACE WATER DEPTH 2.7ft

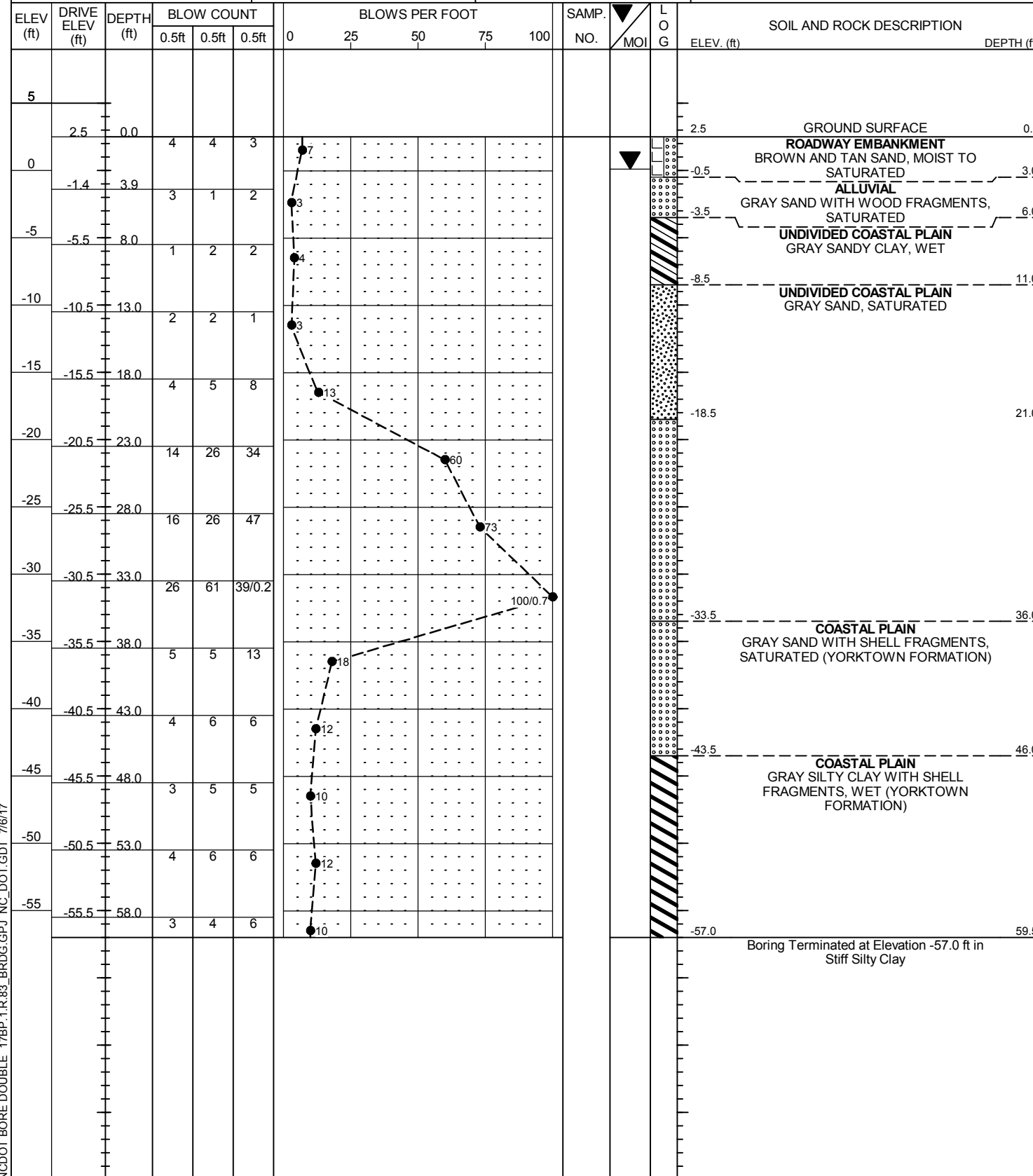


NCDOT BORE DOUBLE 17BP.1.R.83_BRDG.GPJ_NC_DOT.GDT 7/6/17

GEOTECHNICAL BORING REPORT

BORE LOG

WBS 17BP.1.R.83		TIP SF-470035		COUNTY HYDE		GEOLOGIST Cornette, C. J.	
SITE DESCRIPTION BRIDGE NUMBER 35 ON -L- (SR 1143) OVER BRANCH OF SLADES CREEK							GROUND WTR (ft)
BORING NO. EB2-A		STATION 16+15		OFFSET 20 ft LT		ALIGNMENT -L-	
COLLAR ELEV. 2.5 ft		TOTAL DEPTH 59.5 ft		NORTHING 632,833		EASTING 2,747,290	
DRILL RIG/HAMMER EFF./DATE GFO0057 CME-550X 76% 06/13/2017				DRILL METHOD Mud Rotary		HAMMER TYPE Automatic	
DRILLER Edmondson, J. M.		START DATE 06/22/01		COMP. DATE 06/22/17		SURFACE WATER DEPTH N/A	



NCDOT BORE DOUBLE 17BP.1.R.83_BRDG.GPJ NC_DOT.GDT 7/6/17