

## Test Hole #1 Vacuum Excavation Report

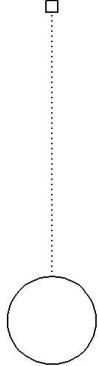
TIP#: SR-1361

Project#: 1C.070040

6/4/2012

Project Description: Crooked Run Road from Newland Road to Firetower Road.

HUB  
SET



FACING NE

### Test Hole Utility Information

Owner:	South Mills Water Association
Type:	Water
Size and Material:	6" Plastic
Depth:	3.05'
Top Elevation:	11.52'
Northing:	986,110.86'
Easting:	2,761,087.75'

### Baseline Station and Offset


N/A

### Design Alignment Station and Offset

N/A



CROOKED RUN ROAD  
 EDGE OF PAVEMENT NOT LOCATED

TH#1 

Project Datum Description: COORDINATES SHOWN ARE NORTH CAROLINA STATE PLANE GRID SYSTEM NAD 83/NSRS 2007 HORIZONTAL, AND NAVD 88 VERTICAL. COORINATES WERE ESTABLISHED USING VRS/GPS METHODS.

Location of Electronic File:

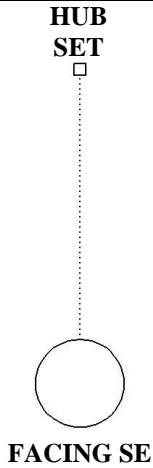
## Test Hole #2 Vacuum Excavation Report

TIP#: SR-1361

Project#: 1C.070040

6/4/2012

Project Description: Crooked Run Road from Newland Road to Firetower Road.



### Test Hole Utility Information

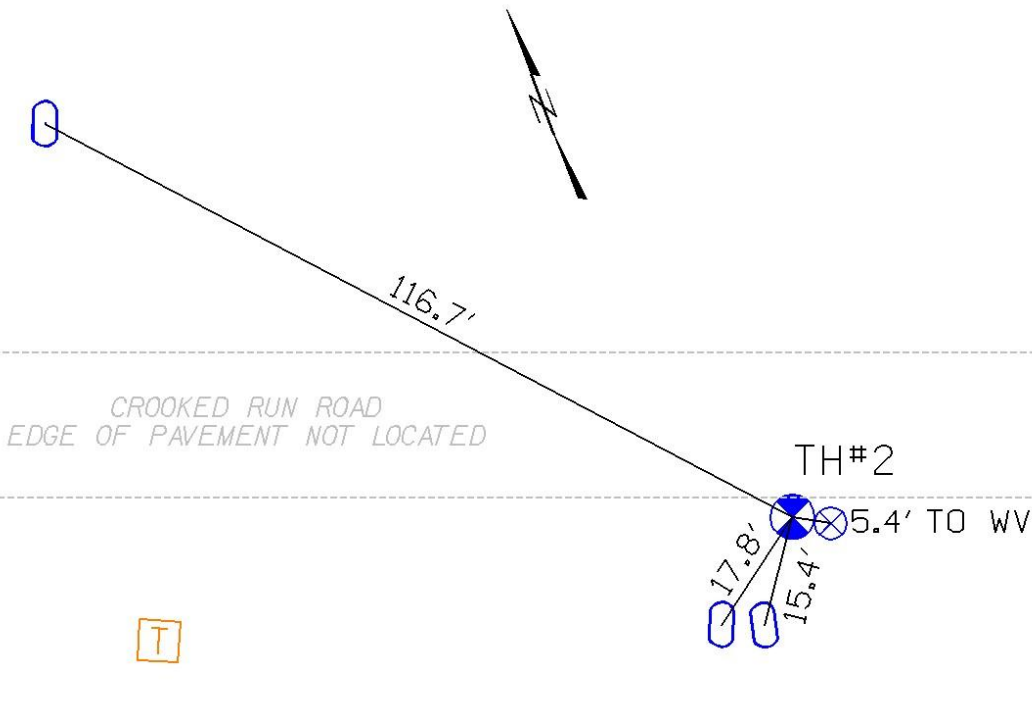
Owner:	South Mills Water Association
Type:	Water
Size and Material:	6" Plastic
Depth:	3.34'
Top Elevation:	8.75'
Northing:	985,657.87'
Easting:	2,762,798.90'

### Baseline Station and Offset

N/A

### Design Alignment Station and Offset

N/A



Project Datum Description: COORDINATES SHOWN ARE NORTH CAROLINA STATE PLANE GRID SYSTEM NAD 83/NSRS 2007 HORIZONTAL, AND NAVD 88 VERTICAL. COORINATES WERE ESTABLISHED USING VRS/GPS METHODS.

Location of Electronic File:

## Test Hole #3 Vacuum Excavation Report

TIP#: SR-1361

Project#: 1C.070040

6/4/2012

Project Description: Crooked Run Road from Newland Road to Firetower Road.

### Test Hole Utility Information

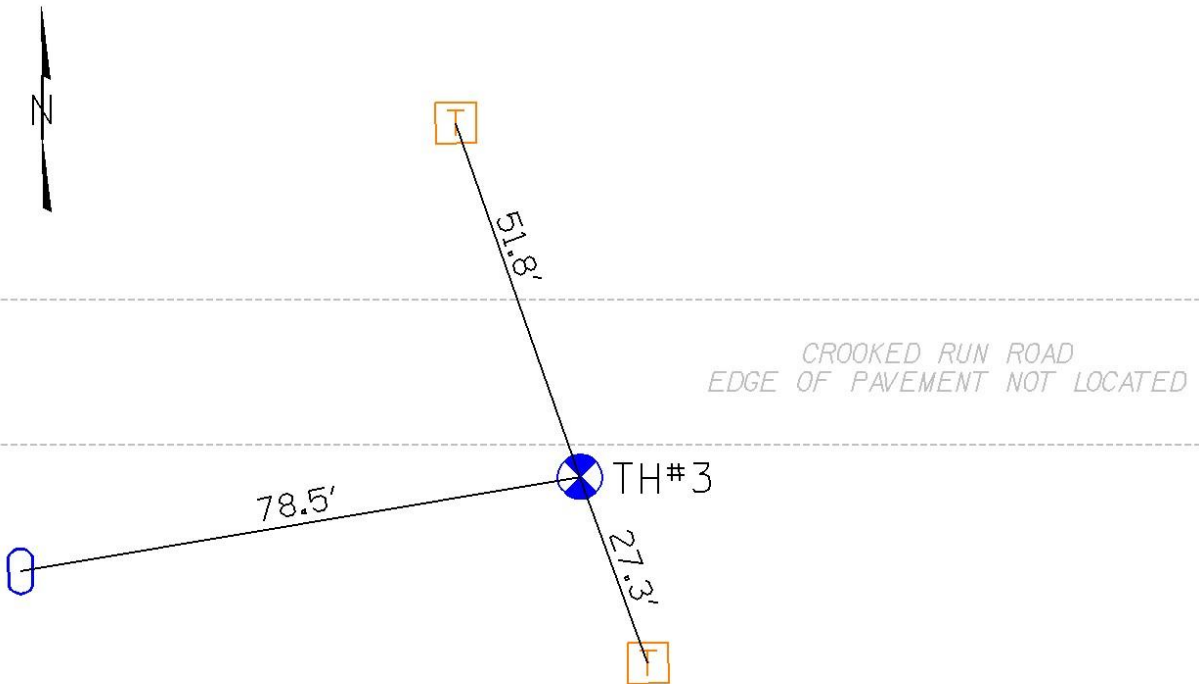
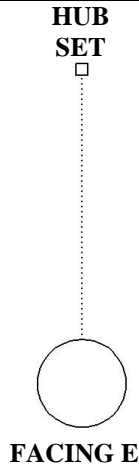
Owner:	South Mills Water Association
Type:	Water
Size and Material:	6" Plastic
Depth:	5.25'
Top Elevation:	7.11'
Northing:	985,603.57'
Easting:	2,763,959.87'

### Baseline Station and Offset

N/A

### Design Alignment Station and Offset

N/A



Project Datum Description: COORDINATES SHOWN ARE NORTH CAROLINA STATE PLANE GRID SYSTEM NAD 83/NSRS 2007 HORIZONTAL, AND NAVD 88 VERTICAL. COORINATES WERE ESTABLISHED USING VRS/GPS METHODS.

Location of Electronic File:

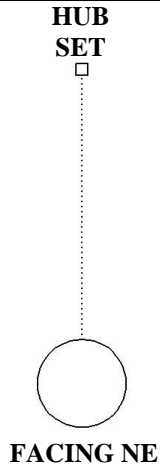
## Test Hole #4 Vacuum Excavation Report

TIP#: SR-1361

Project#: 1C.070040

6/4/2012

Project Description: Crooked Run Road from Newland Road to Firetower Road.



### Test Hole Utility Information

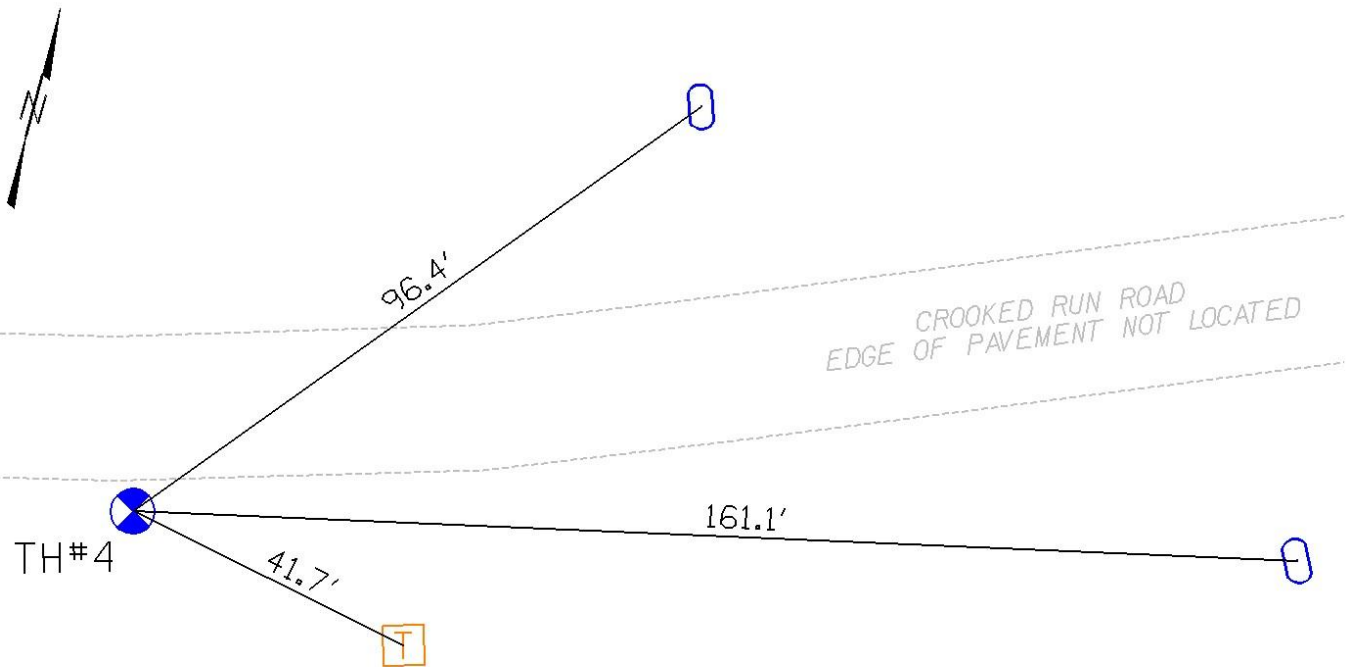
Owner:	South Mills Water Association
Type:	Water
Size and Material:	6" Plastic
Depth:	4.04'
Top Elevation:	9.04'
Northing:	985,633.43'
Easting:	2,764,582.59'

### Baseline Station and Offset

N/A

### Design Alignment Station and Offset

N/A



Project Datum Description: COORDINATES SHOWN ARE NORTH CAROLINA STATE PLANE GRID SYSTEM NAD 83/NSRS 2007 HORIZONTAL, AND NAVD 88 VERTICAL. COORINATES WERE ESTABLISHED USING VRS/GPS METHODS.

Location of Electronic File:

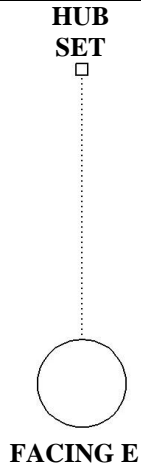
## Test Hole #5 Vacuum Excavation Report

TIP#: SR-1361

Project#: 1C.070040

6/4/2012

Project Description: Crooked Run Road from Newland Road to Firetower Road.



### Test Hole Utility Information

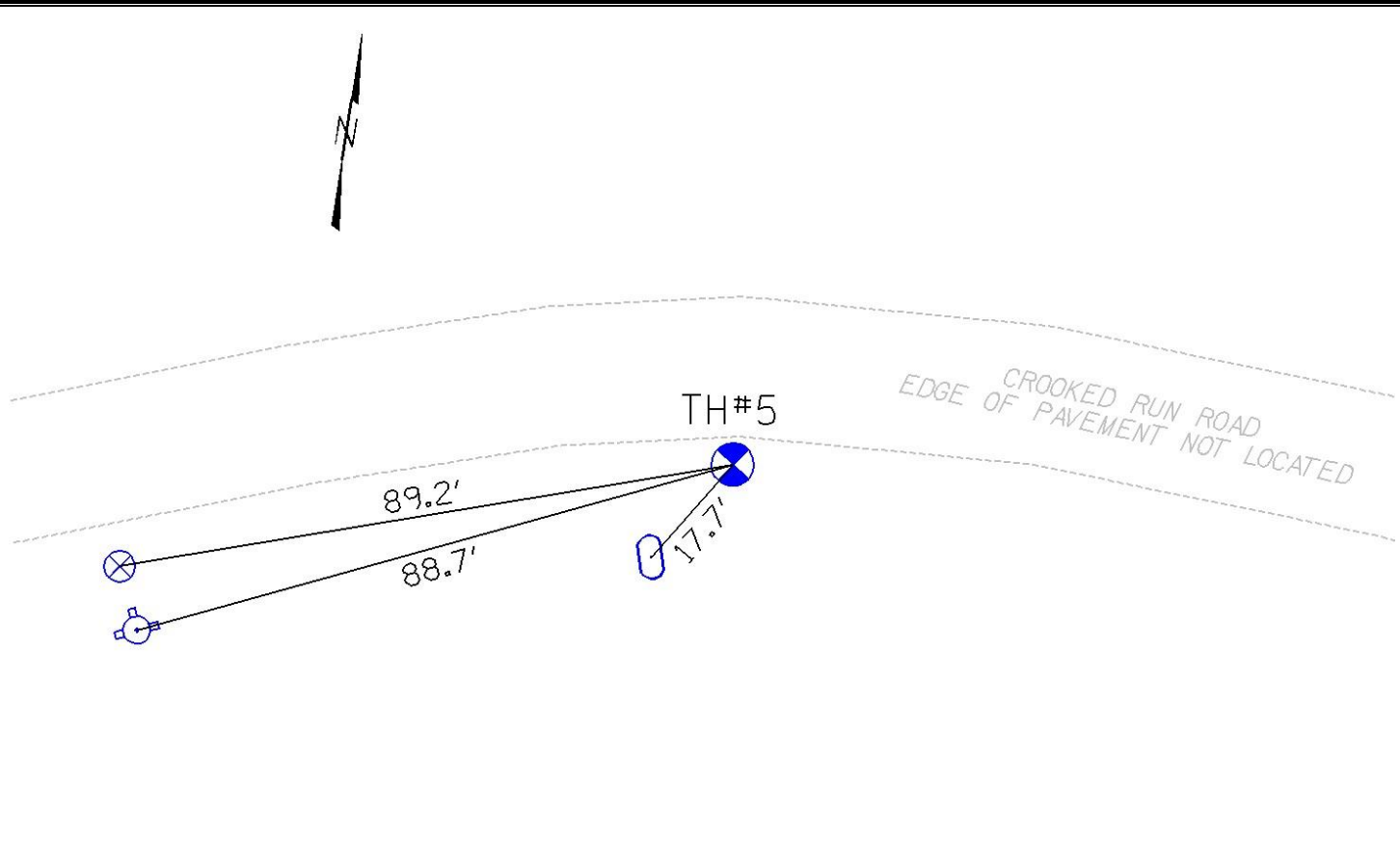
Owner:	South Mills Water Association
Type:	Water
Size and Material:	6" Plastic
Depth:	3.74'
Top Elevation:	6.80'
Northing:	986,058.69'
Easting:	2,765,659.20'

### Baseline Station and Offset

N/A

### Design Alignment Station and Offset

N/A



Project Datum Description: COORDINATES SHOWN ARE NORTH CAROLINA STATE PLANE GRID SYSTEM NAD 83/NSRS 2007 HORIZONTAL, AND NAVD 88 VERTICAL. COORINATES WERE ESTABLISHED USING VRS/GPS METHODS.

Location of Electronic File:

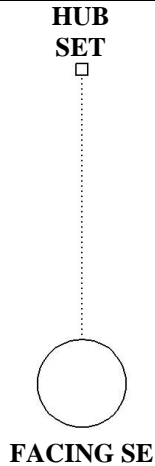
## Test Hole #6 Vacuum Excavation Report

TIP#: SR-1361

Project#: 1C.070040

6/5/2012

Project Description: Crooked Run Road from Newland Road to Firetower Road.



### Test Hole Utility Information

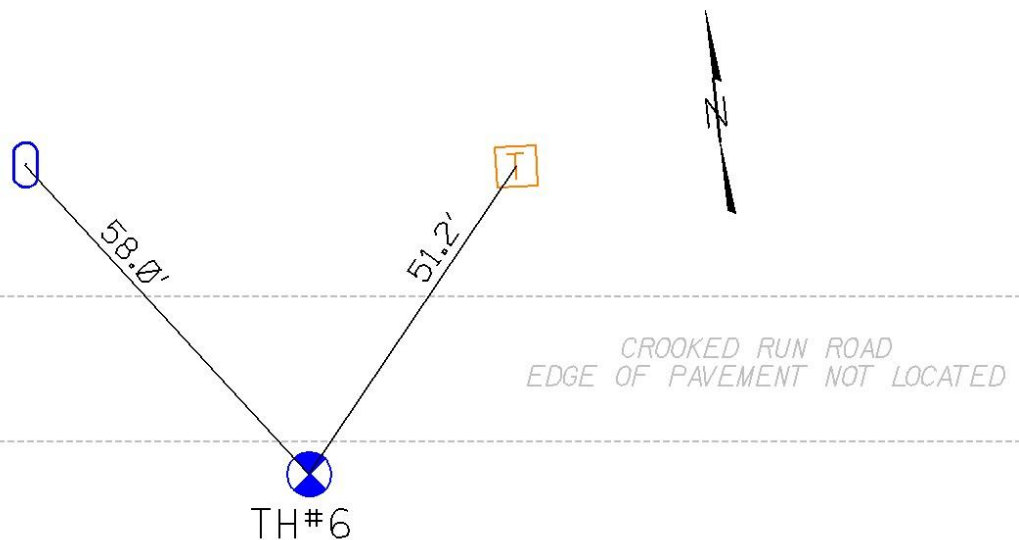
Owner:	South Mills Water Association
Type:	Water
Size and Material:	6" Plastic
Depth:	5.95'
Top Elevation:	4.05'
Northing:	986,014.88'
Easting:	2,766,173.26'

### Baseline Station and Offset

N/A

### Design Alignment Station and Offset

N/A



Project Datum Description: COORDINATES SHOWN ARE NORTH CAROLINA STATE PLANE GRID SYSTEM NAD 83/NSRS 2007 HORIZONTAL, AND NAVD 88 VERTICAL. COORINATES WERE ESTABLISHED USING VRS/GPS METHODS.

Location of Electronic File:

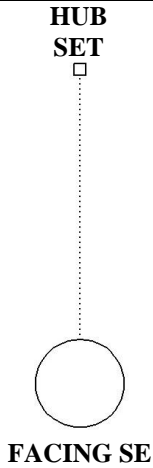
## Test Hole #7 Vacuum Excavation Report

TIP#: SR-1361

Project#: 1C.070040

6/5/2012

Project Description: Crooked Run Road from Newland Road to Firetower Road.



### Test Hole Utility Information

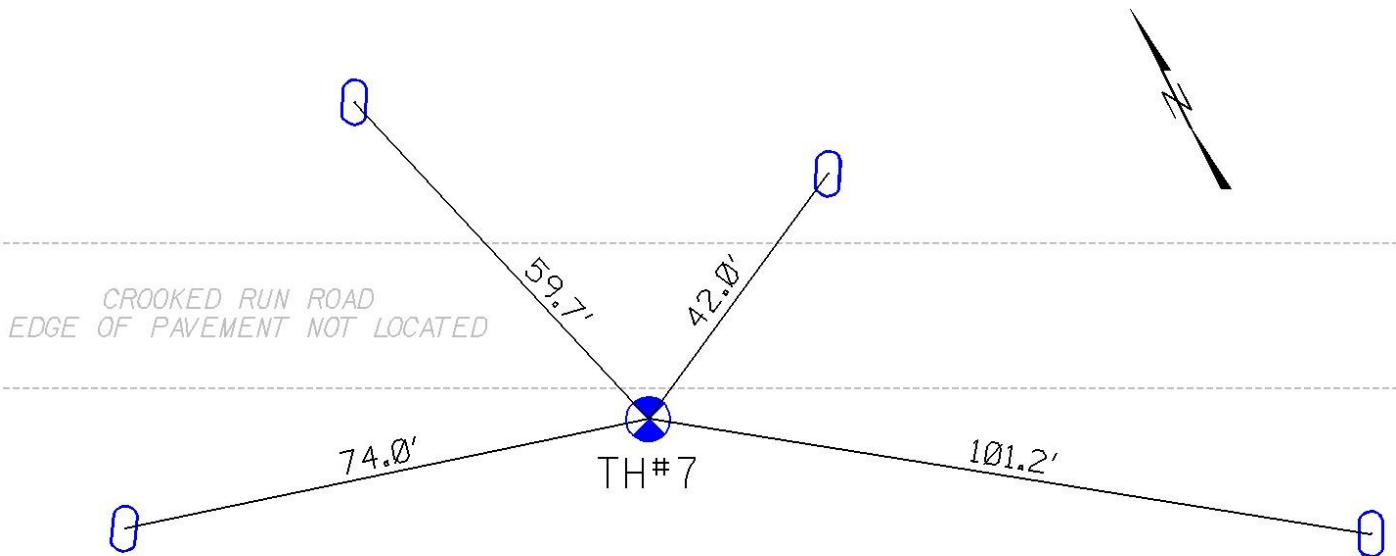
Owner:	South Mills Water Association
Type:	Water
Size and Material:	6" Plastic
Depth:	4.53'
Top Elevation:	6.00'
Northing:	985,777.00'
Easting:	2,767,088.70'

### Baseline Station and Offset

N/A

### Design Alignment Station and Offset

N/A



Project Datum Description: COORDINATES SHOWN ARE NORTH CAROLINA STATE PLANE GRID SYSTEM NAD 83/NSRS 2007 HORIZONTAL, AND NAVD 88 VERTICAL. COORINATES WERE ESTABLISHED USING VRS/GPS METHODS.

Location of Electronic File:

## Test Hole #8 Vacuum Excavation Report

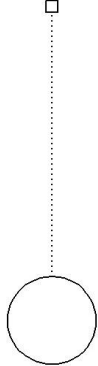
TIP#: SR-1361

Project#: 1C.070040

6/5/2012

Project Description: Crooked Run Road from Newland Road to Firetower Road.

HUB  
SET



FACING SE

### Test Hole Utility Information

Owner:	South Mills Water Association
Type:	Water
Size and Material:	6" Plastic
Depth:	4.71'
Top Elevation:	4.55'
Northing:	984,731.96'
Easting:	2,769,121.93'

### Baseline Station and Offset

N/A

### Design Alignment Station and Offset

N/A



CROOKED RUN ROAD  
EDGE OF PAVEMENT NOT LOCATED

TH#8

86.7'

91.8'

Project Datum Description: COORDINATES SHOWN ARE NORTH CAROLINA STATE PLANE GRID SYSTEM NAD 83/NSRS 2007 HORIZONTAL, AND NAVD 88 VERTICAL. COORINATES WERE ESTABLISHED USING VRS/GPS METHODS.

Location of Electronic File:



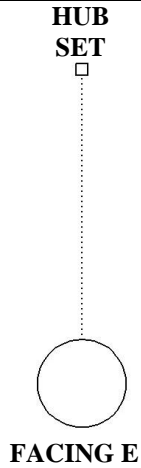
## Test Hole #9 Vacuum Excavation Report

TIP#: SR-1361

Project#: 1C.070040

6/5/2012

Project Description: Crooked Run Road from Newland Road to Firetower Road.



### Test Hole Utility Information

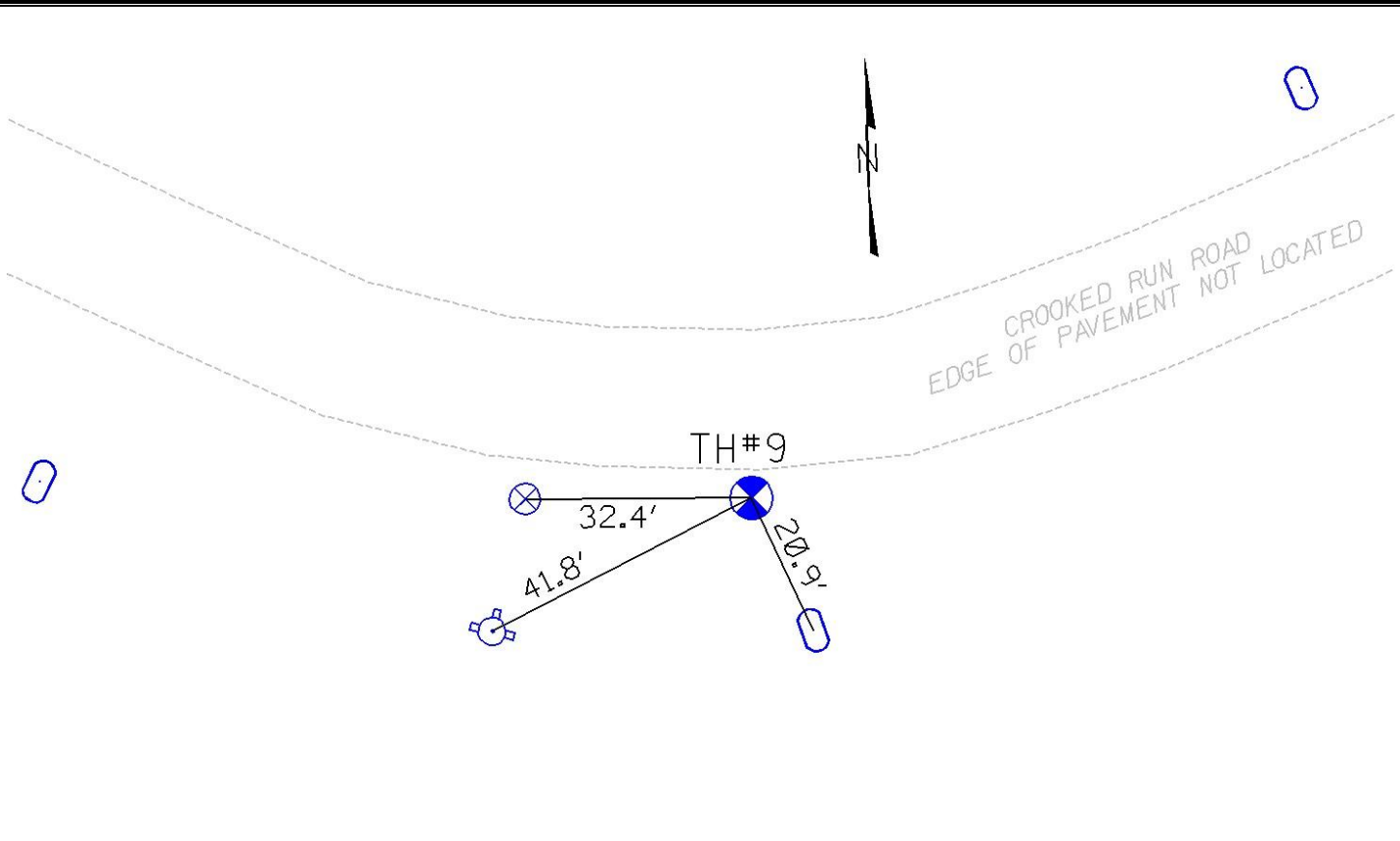
Owner:	South Mills Water Association
Type:	Water
Size and Material:	6" Plastic
Depth:	3.21'
Top Elevation:	7.41'
Northing:	984,017.06'
Easting:	2,770,551.63'

### Baseline Station and Offset

N/A

### Design Alignment Station and Offset

N/A



Project Datum Description: COORDINATES SHOWN ARE NORTH CAROLINA STATE PLANE GRID SYSTEM NAD 83/NSRS 2007 HORIZONTAL, AND NAVD 88 VERTICAL. COORINATES WERE ESTABLISHED USING VRS/GPS METHODS.

Location of Electronic File:

## Test Hole #10 Vacuum Excavation Report

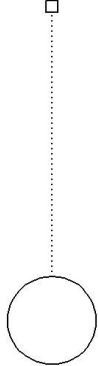
TIP#: SR-1361

Project#: 1C.070040

6/5/2012

Project Description: Crooked Run Road from Newland Road to Firetower Road.

HUB  
SET



FACING NE

### Test Hole Utility Information

Owner:	South Mills Water Association
Type:	Water
Size and Material:	6" Plastic
Depth:	2.95'
Top Elevation:	7.01'
Northing:	985,023.00'
Easting:	2,772,836.46'

### Baseline Station and Offset

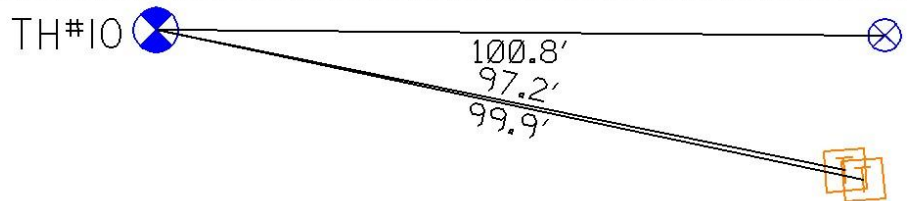
N/A

### Design Alignment Station and Offset

N/A



CROOKED RUN ROAD  
EDGE OF PAVEMENT NOT LOCATED



Project Datum Description: COORDINATES SHOWN ARE NORTH CAROLINA STATE PLANE GRID SYSTEM NAD 83/NSRS 2007 HORIZONTAL, AND NAVD 88 VERTICAL. COORINATES WERE ESTABLISHED USING VRS/GPS METHODS.

Location of Electronic File: