

WBS ELEMENT: IC.070011, ETC.

CONTRACT NO.:

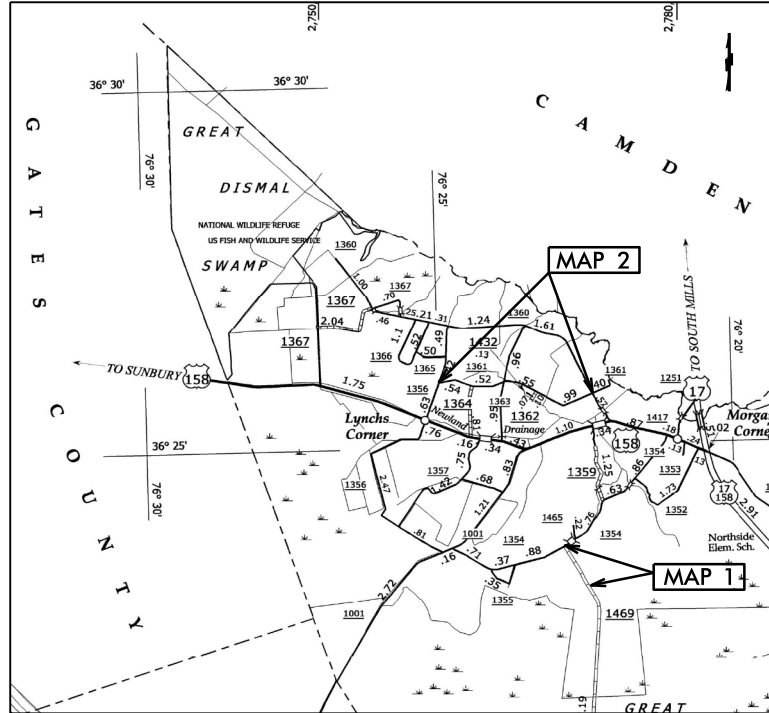
STATE OF NORTH CAROLINA
DIVISION OF HIGHWAYS

PASQUOTANK COUNTY

LOCATION: MAP 1 SR 1469 FROM SR 1354 TO STATION 32+44
MAP 2 SR 1361 FROM SR 1356 TO SR 1360

TYPE OF WORK: PIPE REPLACEMENT, WIDENING, RESURFACING & PAVEMENT MARKINGS

STATE	STATE PROJECT REFERENCE NO.	PROJECT NO.	TOTAL SHEETS
N.C.	IC.070011, ETC.	1	21
STATE PROJ. NO.	P.A. PROJ. NO.	DESCRIPTION	
IC.070011		MAP 1	
IC.070040		MAP 2	



NTS

PROJECT LENGTH

LENGTH OF ROADWAY PROJECT MAP 1 0.60 MI.
LENGTH OF ROADWAY PROJECT MAP 2 2.58 MI.

Prepared in the Office of:
DIVISION OF HIGHWAYS

113 Airport Dr., Edenton NC, 27932

2012 STANDARD SPECIFICATIONS

LETTING DATE:

W. B. HOBBS, P.E.
DIVISION PROJECT MANAGER

C. E. SLACHTA
DIVISION PROPOSALS ENGINEER

DIVISION OF HIGHWAYS
STATE OF NORTH CAROLINA



PAVEMENT SCHEDULE

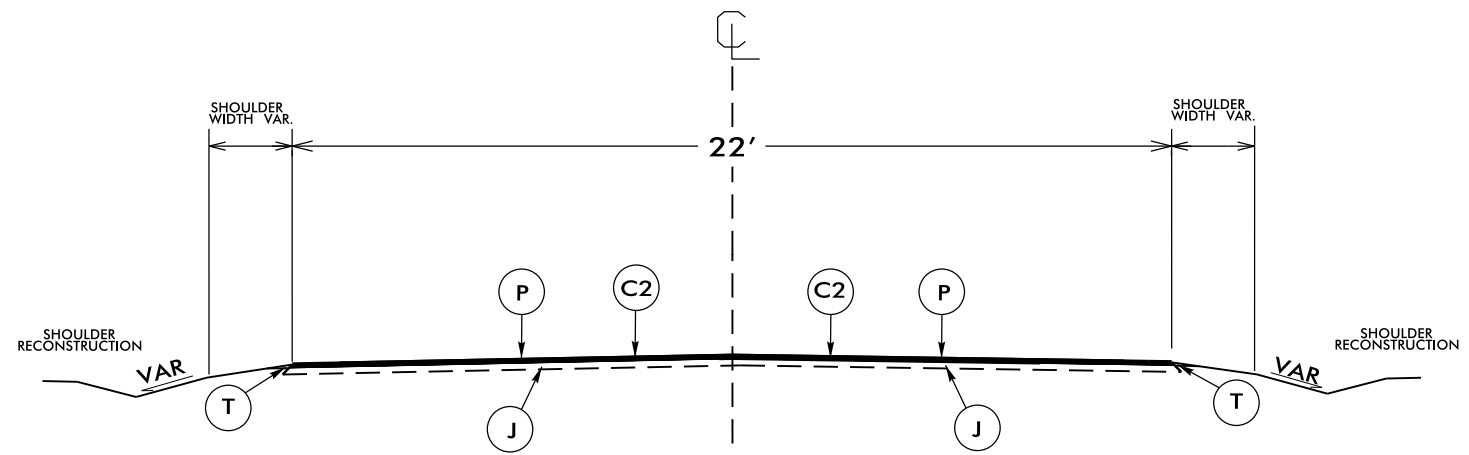
C2	PROP. APPROX. 2" ASPHALT CONCRETE SURFACE COURSE, TYPE S9.5B, AT AN AVERAGE RATE OF 224 LBS. PER SQ. YD.
J	EXISTING AGGREGATE BASE COURSE
P	PRIME COAT TO BE APPLIED AT AN AVERAGE RATE 0.35 GAL. PER SQ YD
T	EARTH MATERIAL

NOTES:

*ALL PAVED S.R. ROADS TO BE RESURFACED TO THE ENDS OF THE RADL., OR AS DIRECTED BY THE ENGINEER

*EDGES, PAVEMENT WIDENING, INTERSECTIONS, AND BRIDGE FLARES ARE INCLUDED IN THE TABLE OF QUANTITIES

*PAVEMENT EDGE SLOPES ARE 1:1 UNLESS SHOWN OTHERWISE



TYPICAL SECTION NO.1

USE WITH MAP 1

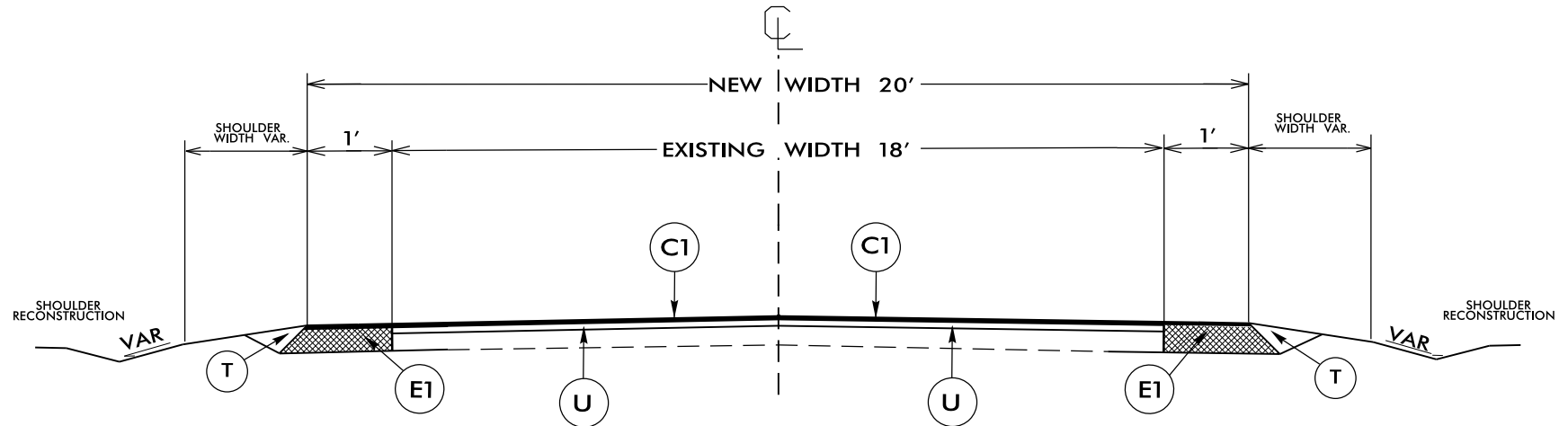
NTS

PAVEMENT SCHEDULE

C1	PROP. APPROX. 1½" ASPHALT CONCRETE SURFACE COURSE, TYPE SF9.5A, AT AN AVERAGE RATE OF 165 LBS. PER SQ. YD.
E1	PROP. APPROX. 5½" ASPHALT CONCRETE BASE COURSE, TYPE B25.0B, AT AN AVERAGE RATE OF 627 LBS. PER SQ. YD.
T	EARTH MATERIAL.
U	EXISTING PAVEMENT.

NOTES:

- *ALL PAVED S.R. ROADS TO BE RESURFACED TO THE ENDS OF THE RADI., OR AS DIRECTED BY THE ENGINEER
- *EDGES, PAVEMENT WIDENING, INTERSECTIONS, AND BRIDGE FLARES ARE INCLUDED IN THE TABLE OF QUANTITIES
- *PAVEMENT EDGE SLOPES ARE 1:1 UNLESS SHOWN OTHERWISE



TYPICAL SECTION NO.2

USE WITH MAP 2

NTS

FOR GENERAL INFORMATION ONLY
UTILITY LOCATIONS ARE
BASED ON PUBLIC RECORDS
LOCATIONS HAVE NOT BEEN
VERIFIED IN THE FIELD

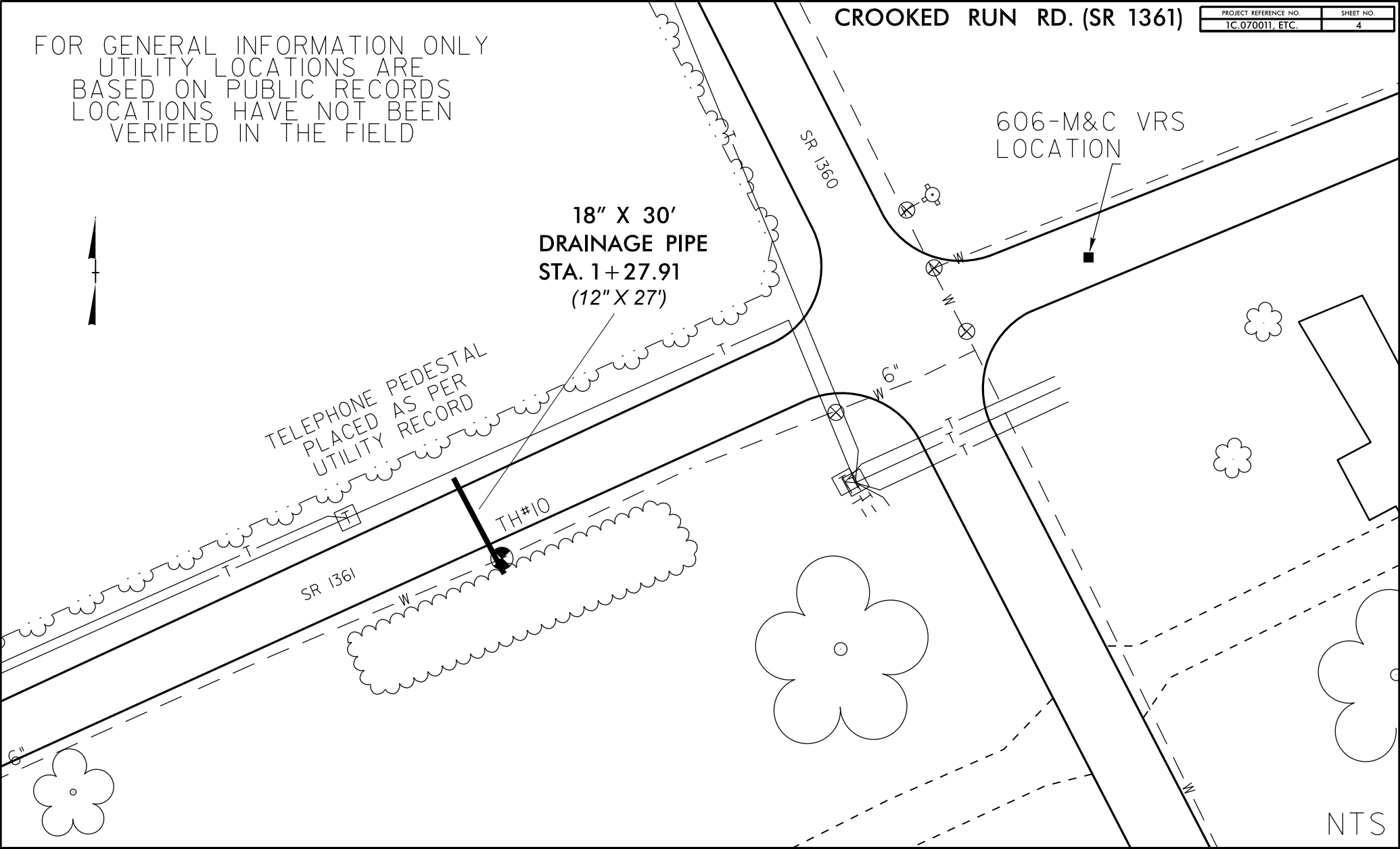


18" X 30'
DRAINAGE PIPE
STA. 1+27.91
(12" X 27')

TELEPHONE PEDESTAL
PLACED AS PER
UTILITY RECORD

TH#10

606-M&C VRS
LOCATION

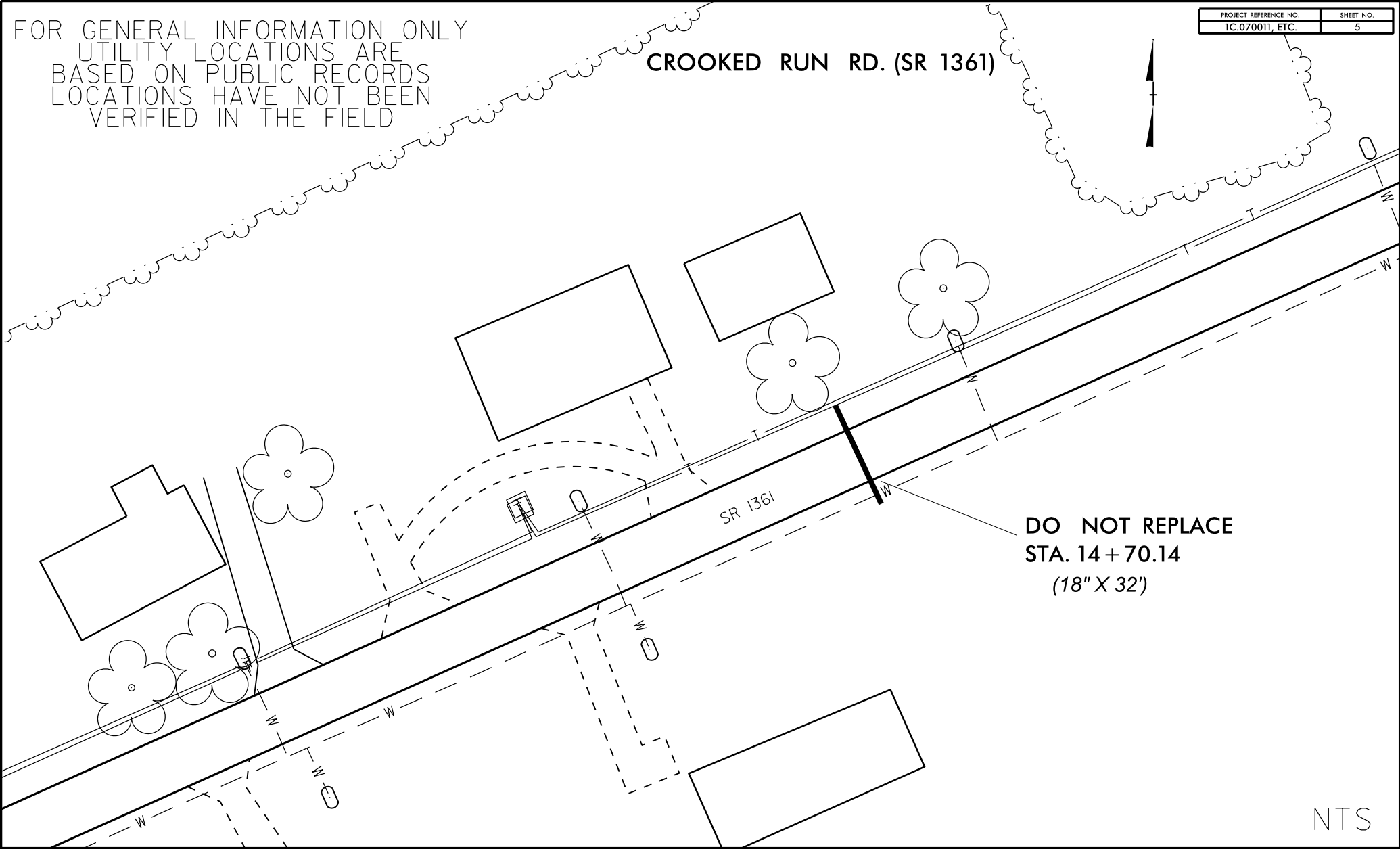


NTS

FOR GENERAL INFORMATION ONLY
UTILITY LOCATIONS ARE
BASED ON PUBLIC RECORDS
LOCATIONS HAVE NOT BEEN
VERIFIED IN THE FIELD

CROOKED RUN RD. (SR 1361)

PROJECT REFERENCE NO. 1C.070011, ETC.	SHEET NO. 5
--	----------------



**DO NOT REPLACE
STA. 14+70.14
(18" X 32')**

NTS

FOR GENERAL INFORMATION ONLY
UTILITY LOCATIONS ARE
BASED ON PUBLIC RECORDS
LOCATIONS HAVE NOT BEEN
VERIFIED IN THE FIELD

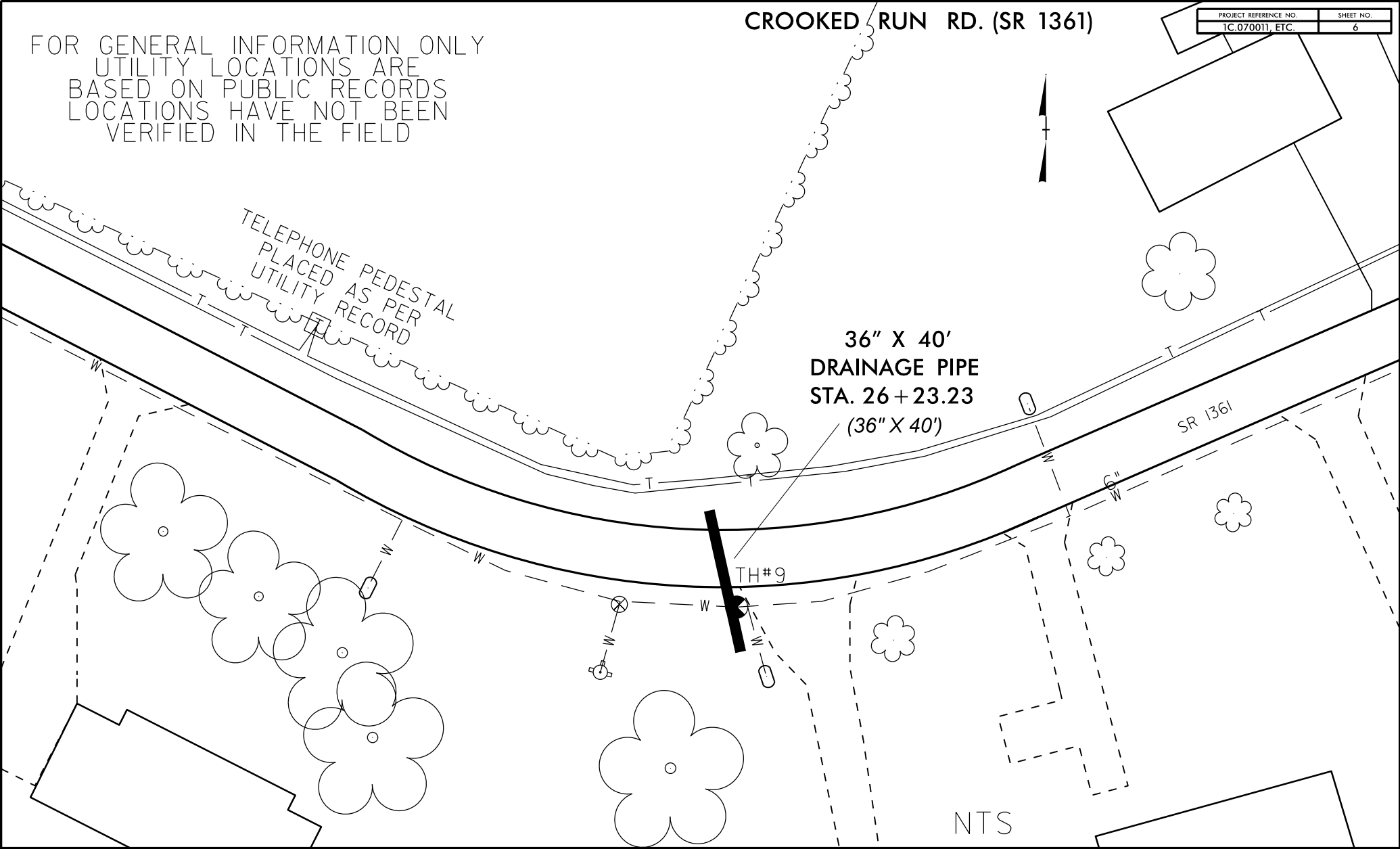
TELEPHONE PEDESTAL
PLACED AS PER
UTILITY RECORD

36" X 40'
DRAINAGE PIPE
STA. 26+23.23
(36" X 40')

SR 1361

TH#9

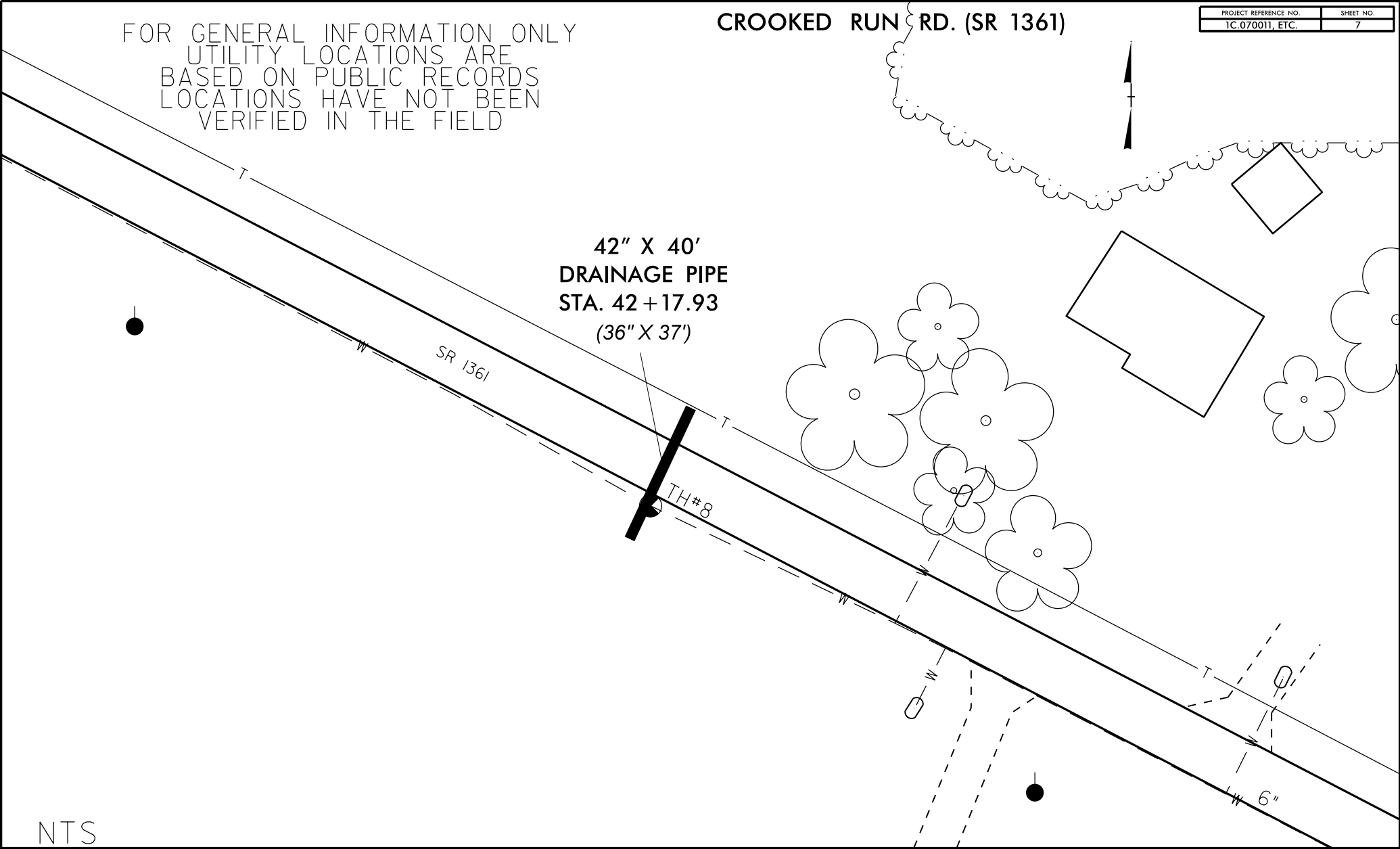
NTS



FOR GENERAL INFORMATION ONLY
UTILITY LOCATIONS ARE
BASED ON PUBLIC RECORDS
LOCATIONS HAVE NOT BEEN
VERIFIED IN THE FIELD

CROOKED RUN RD. (SR 1361)

PROJECT REFERENCE NO. 1C.070011, ETC.	SHEET NO. 7
--	----------------



**42" X 40'
DRAINAGE PIPE
STA. 42+17.93
(36" X 37')**

SR 1361

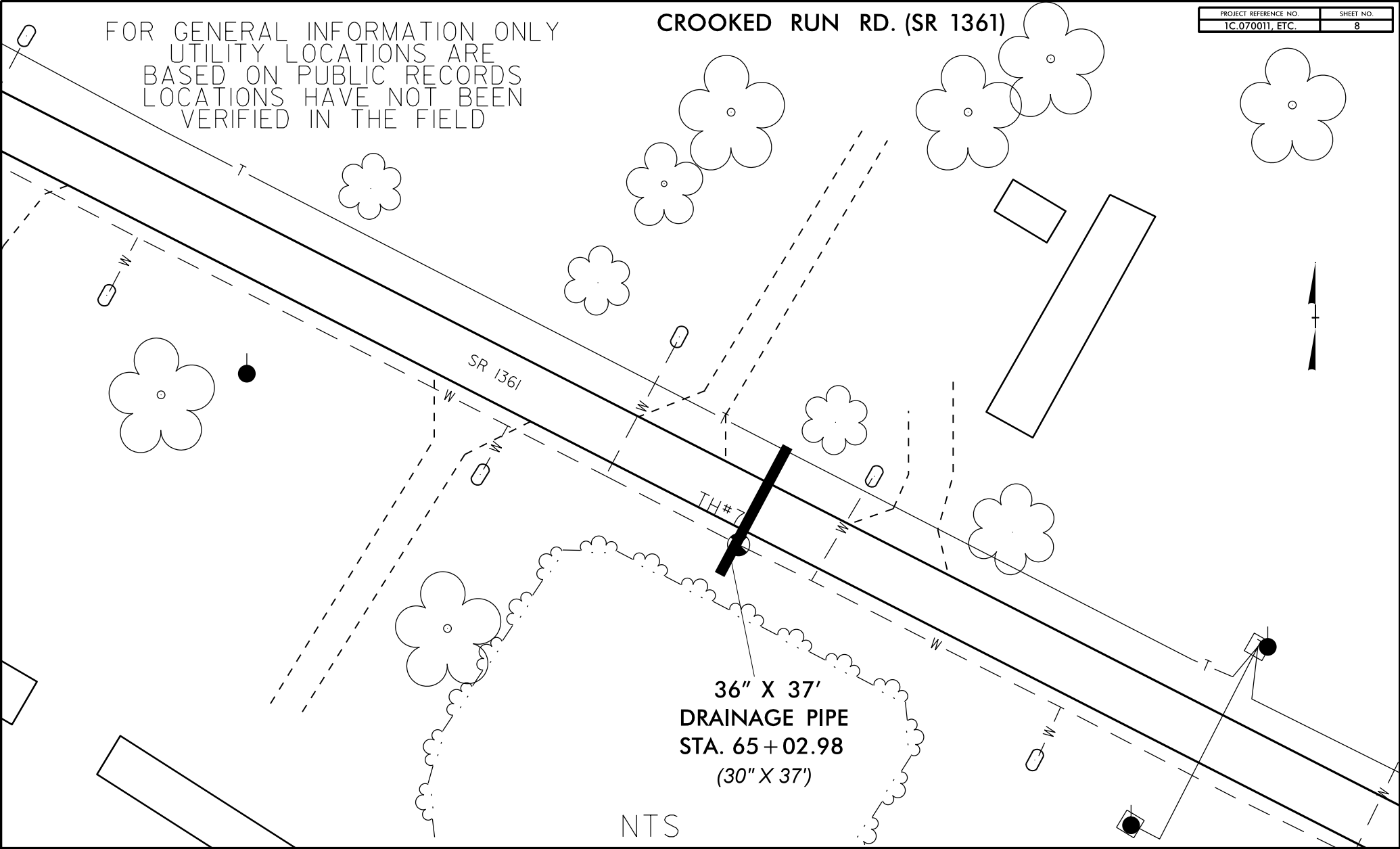
TH#8

6"

NTS

CROOKED RUN RD. (SR 1361)

FOR GENERAL INFORMATION ONLY
UTILITY LOCATIONS ARE
BASED ON PUBLIC RECORDS
LOCATIONS HAVE NOT BEEN
VERIFIED IN THE FIELD



**36" X 37'
DRAINAGE PIPE
STA. 65+02.98
(30" X 37')**

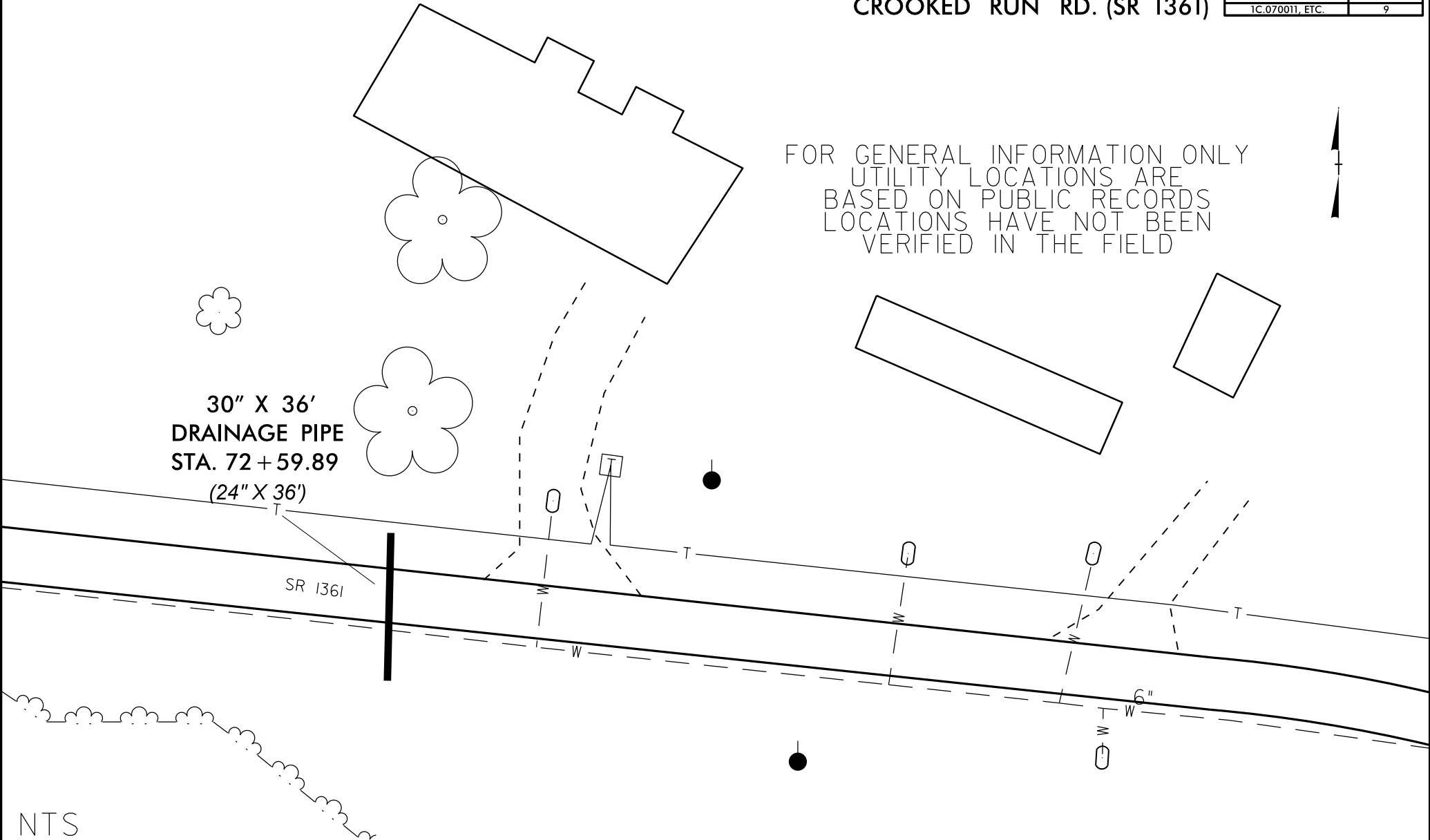
NTS

FOR GENERAL INFORMATION ONLY
UTILITY LOCATIONS ARE
BASED ON PUBLIC RECORDS
LOCATIONS HAVE NOT BEEN
VERIFIED IN THE FIELD



30" X 36'
DRAINAGE PIPE
STA. 72+59.89
(24" X 36')

SR 1361

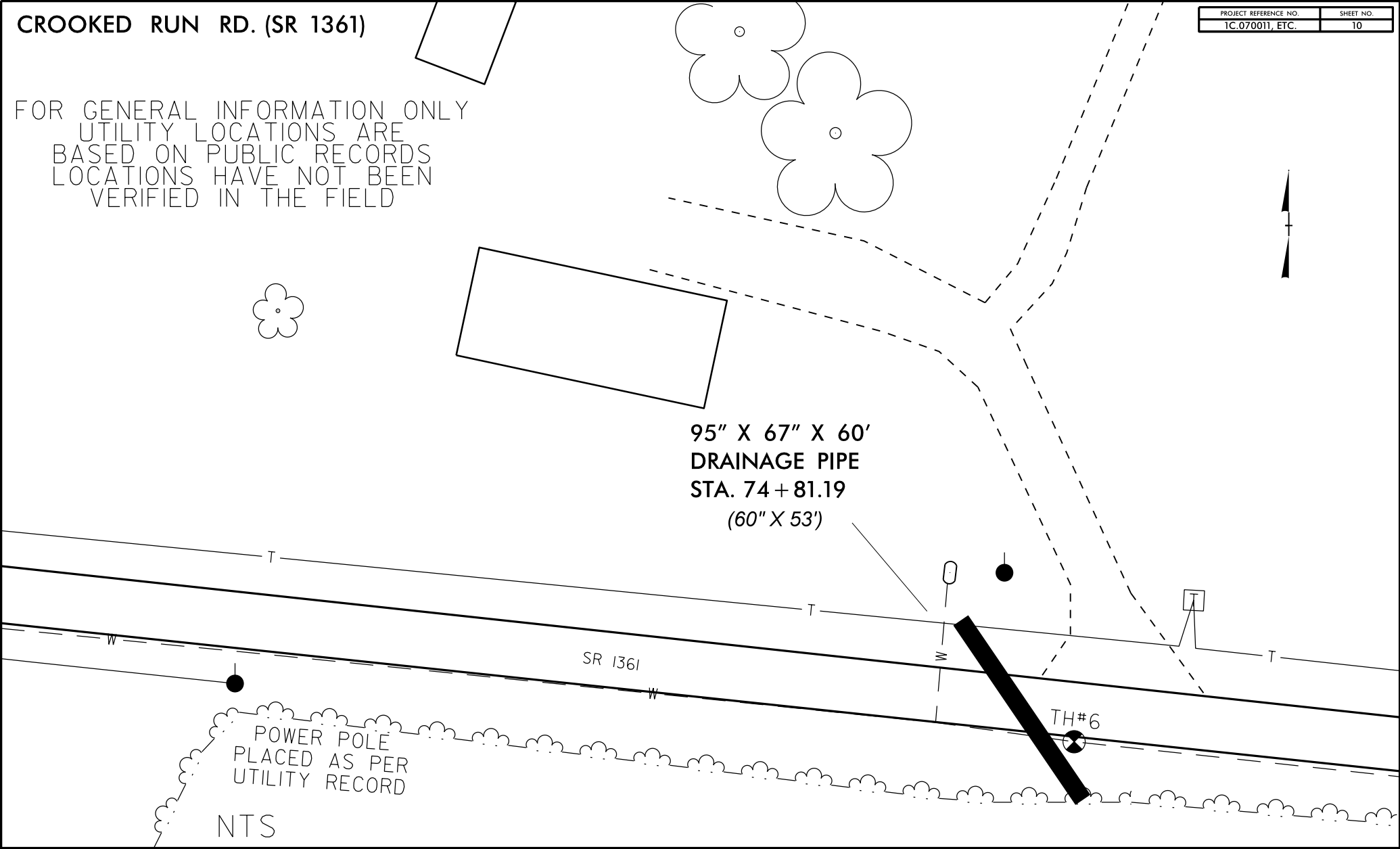


NTS

CROOKED RUN RD. (SR 1361)

PROJECT REFERENCE NO. 1C.070011, ETC.	SHEET NO. 10
--	-----------------

FOR GENERAL INFORMATION ONLY
UTILITY LOCATIONS ARE
BASED ON PUBLIC RECORDS
LOCATIONS HAVE NOT BEEN
VERIFIED IN THE FIELD



95" X 67" X 60'
DRAINAGE PIPE
STA. 74 + 81.19
(60" X 53')

POWER POLE
PLACED AS PER
UTILITY RECORD

NTS

TH#6

SR 1361

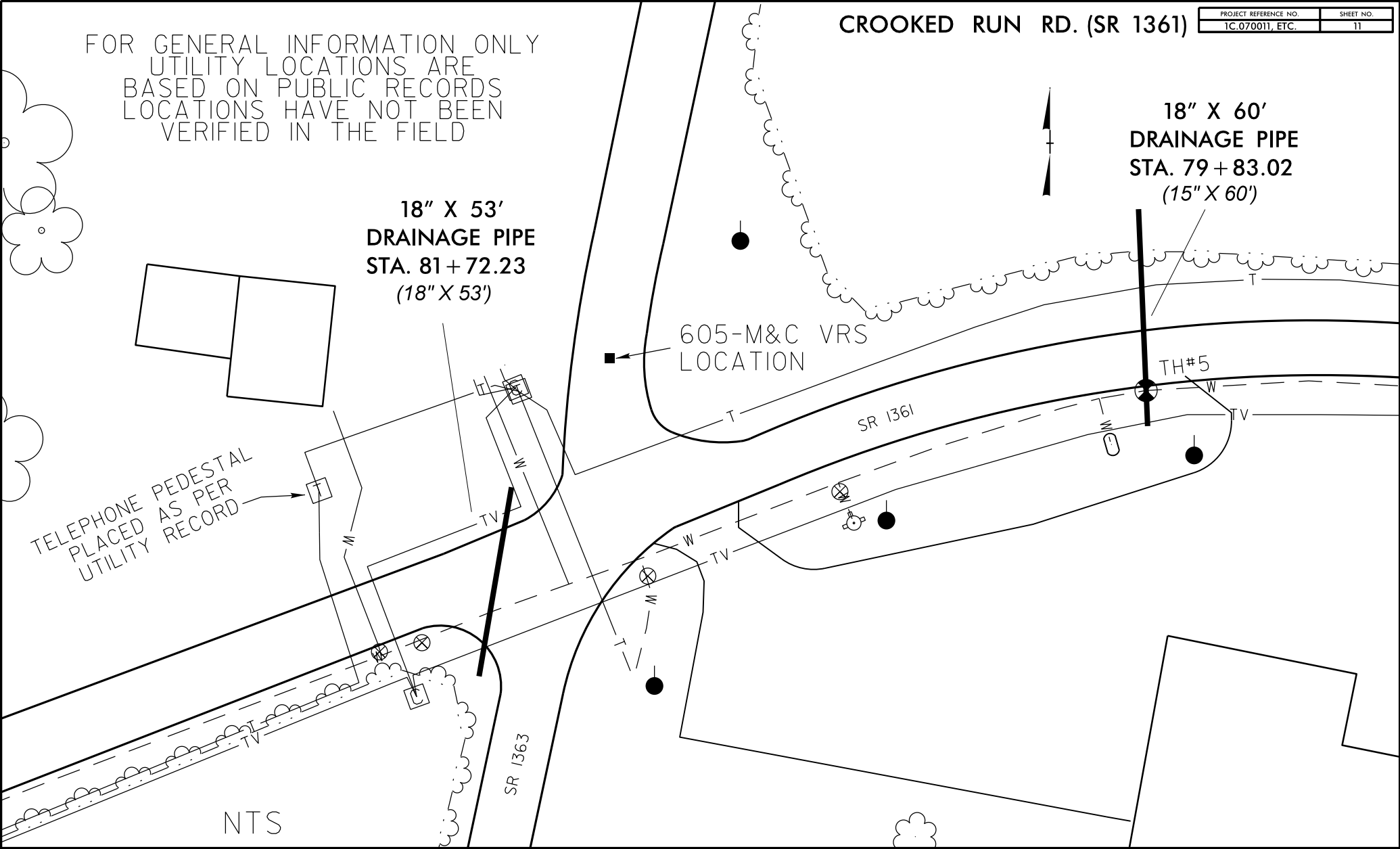
FOR GENERAL INFORMATION ONLY
UTILITY LOCATIONS ARE
BASED ON PUBLIC RECORDS
LOCATIONS HAVE NOT BEEN
VERIFIED IN THE FIELD

18" X 53'
DRAINAGE PIPE
STA. 81+72.23
(18" X 53')

18" X 60'
DRAINAGE PIPE
STA. 79+83.02
(15" X 60')

605-M&C VRS
LOCATION

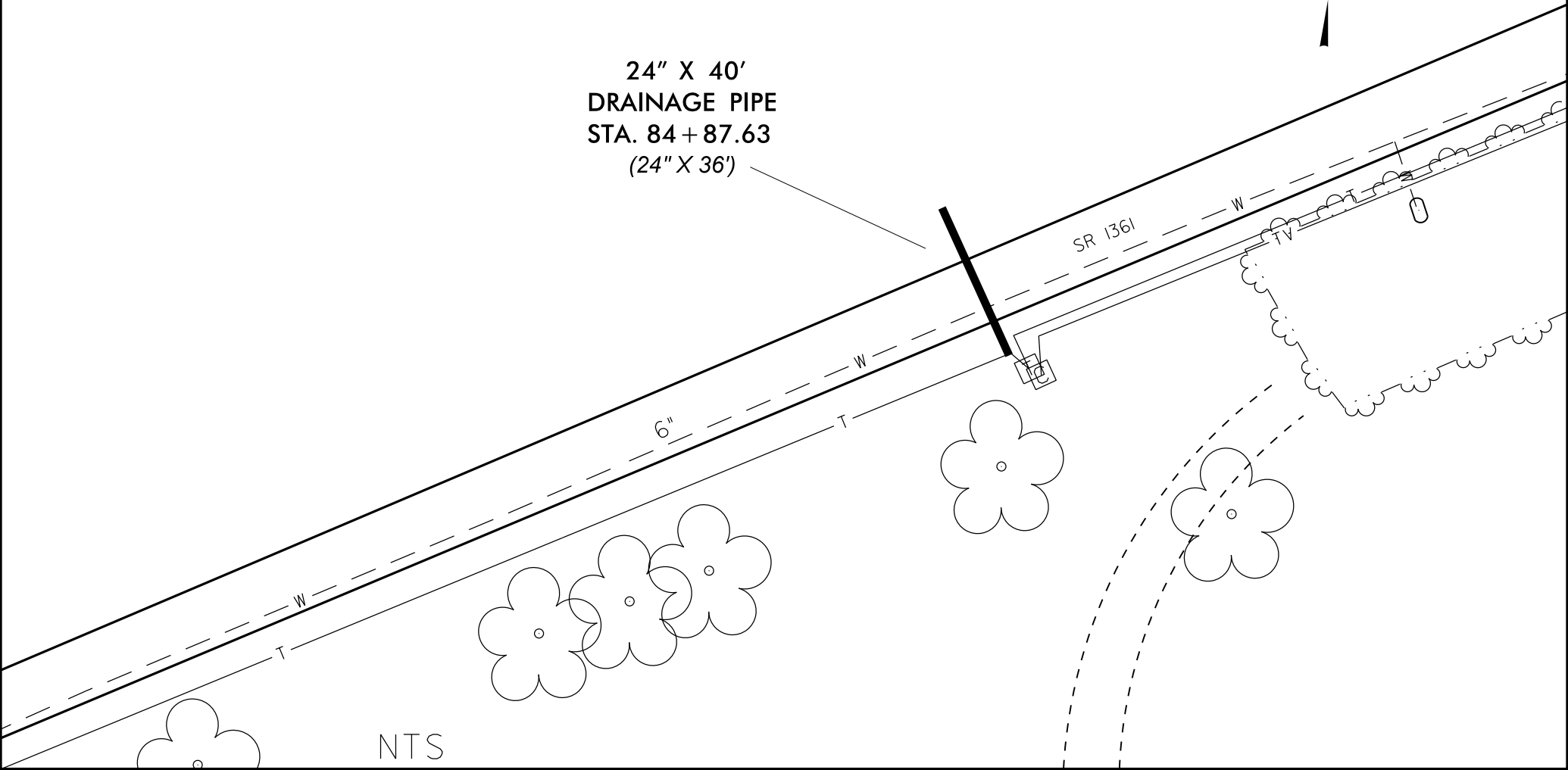
TELEPHONE PEDESTAL
PLACED AS PER
UTILITY RECORD



FOR GENERAL INFORMATION ONLY
UTILITY LOCATIONS ARE
BASED ON PUBLIC RECORDS
LOCATIONS HAVE NOT BEEN
VERIFIED IN THE FIELD



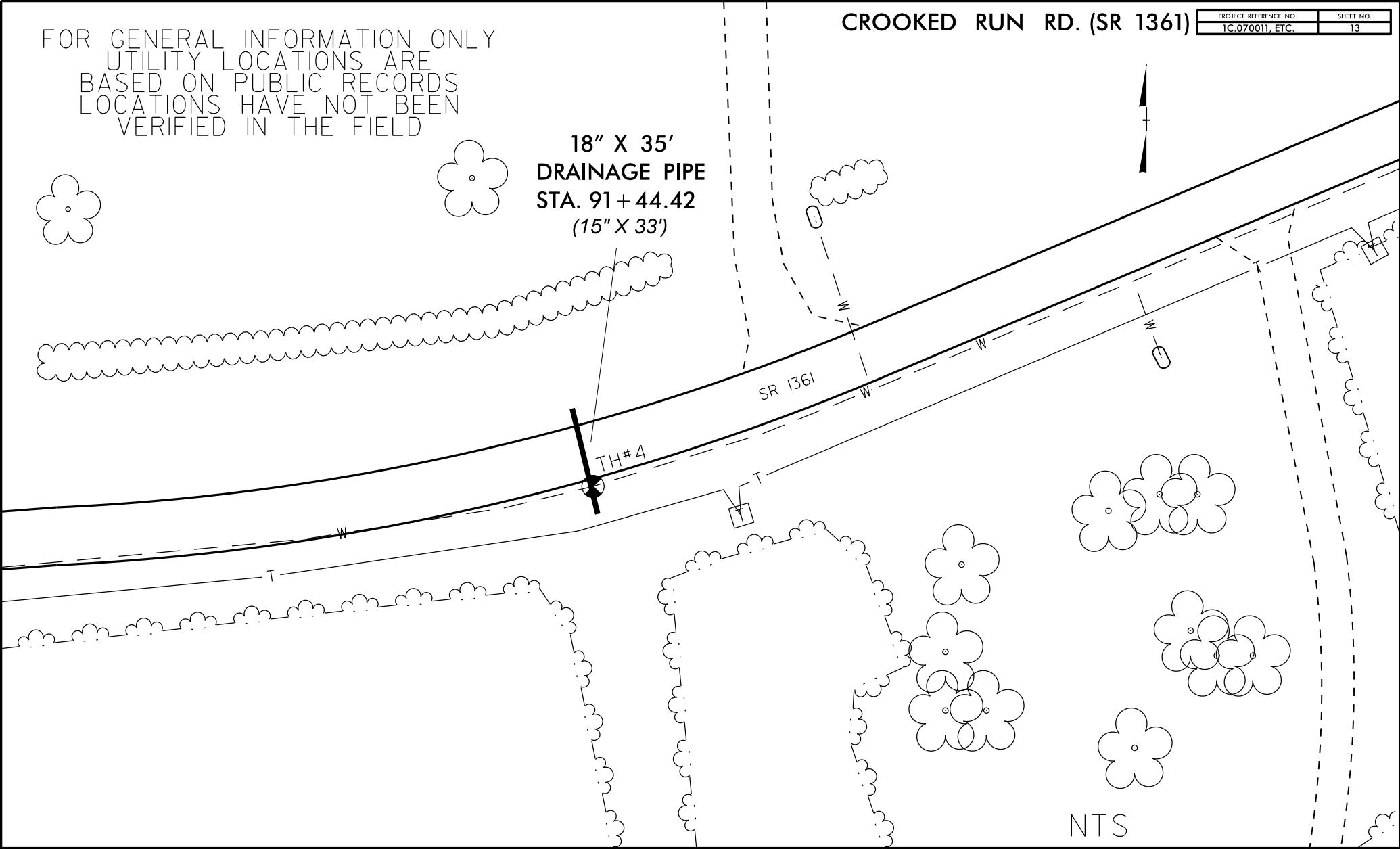
**24" X 40'
DRAINAGE PIPE
STA. 84 + 87.63
(24" X 36')**



NTS

FOR GENERAL INFORMATION ONLY
UTILITY LOCATIONS ARE
BASED ON PUBLIC RECORDS
LOCATIONS HAVE NOT BEEN
VERIFIED IN THE FIELD

18" X 35'
DRAINAGE PIPE
STA. 91+44.42
(15" X 33')

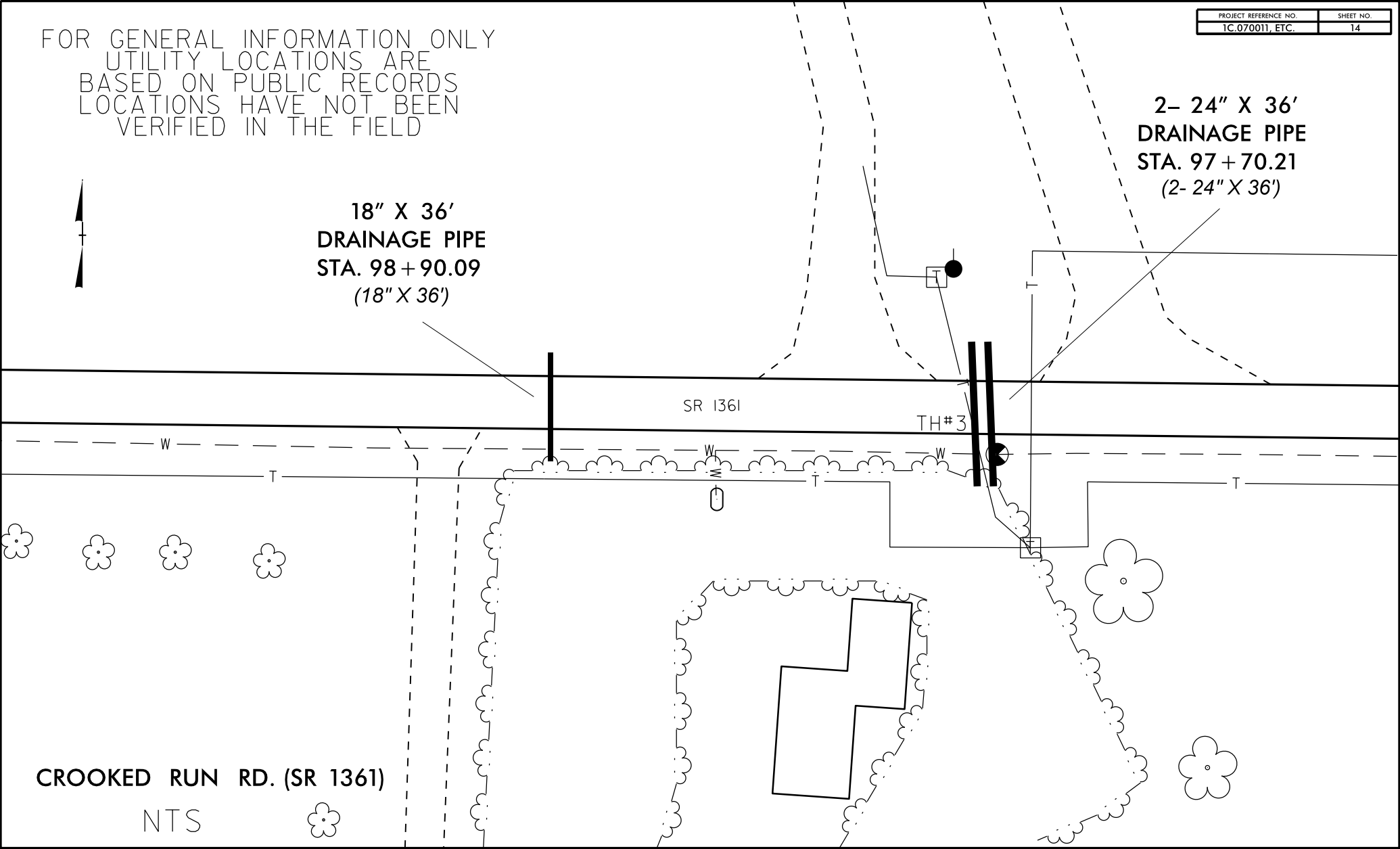


NTS

FOR GENERAL INFORMATION ONLY
UTILITY LOCATIONS ARE
BASED ON PUBLIC RECORDS
LOCATIONS HAVE NOT BEEN
VERIFIED IN THE FIELD

2- 24" X 36'
DRAINAGE PIPE
STA. 97+70.21
(2- 24" X 36')

18" X 36'
DRAINAGE PIPE
STA. 98+90.09
(18" X 36')



FOR GENERAL INFORMATION ONLY
UTILITY LOCATIONS ARE
BASED ON PUBLIC RECORDS
LOCATIONS HAVE NOT BEEN
VERIFIED IN THE FIELD

24" X 36'
DRAINAGE PIPE
STA. 104+70.96
(24" X 36')



SR 1361

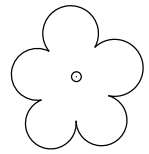
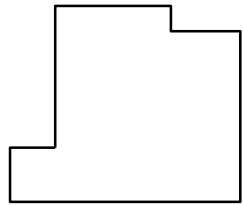
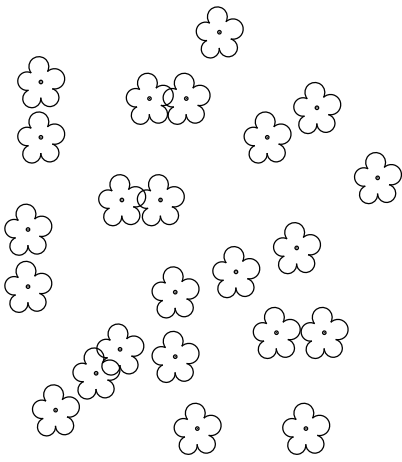
W

W

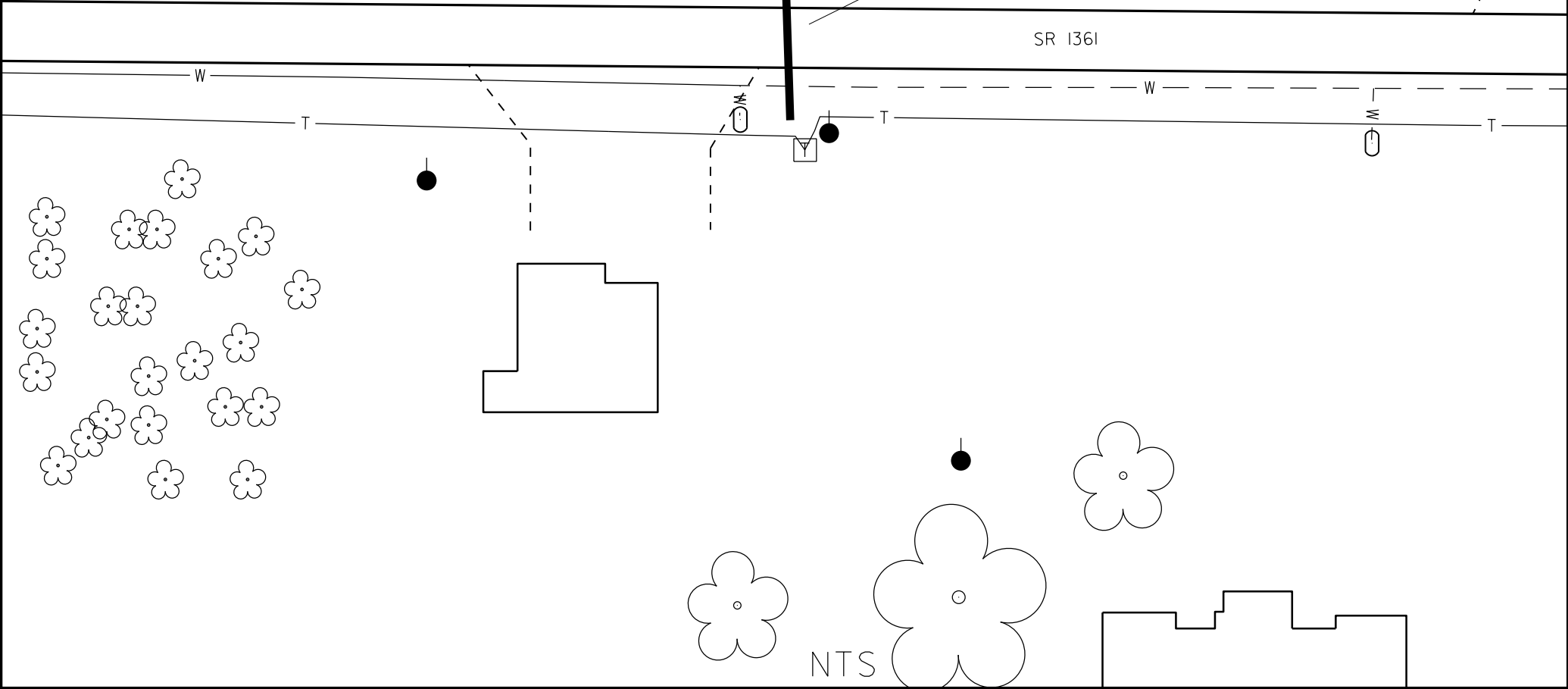
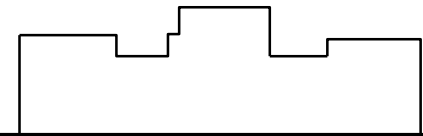
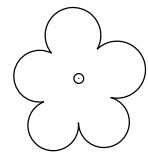
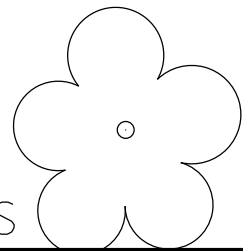
T

T

T



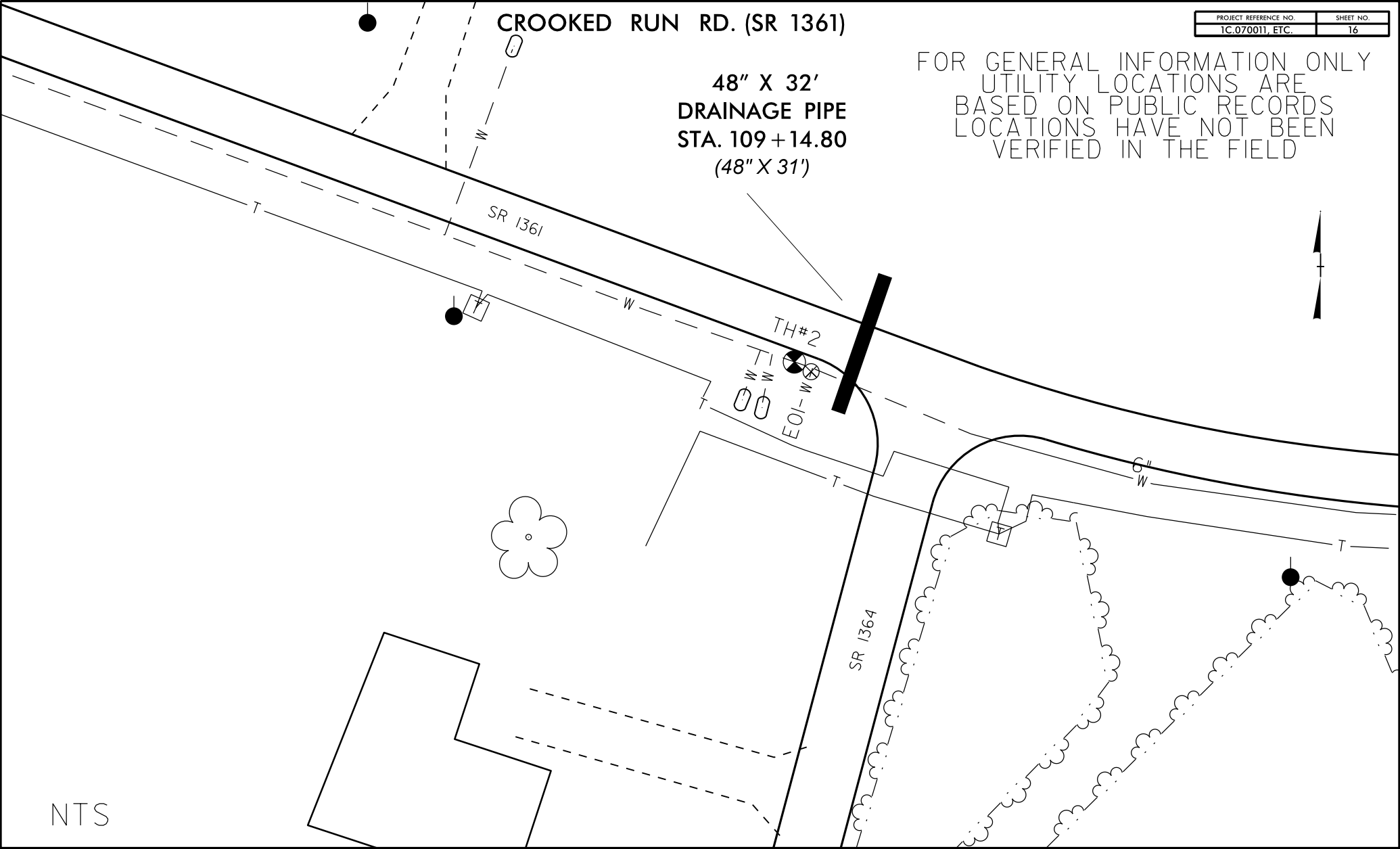
NTS



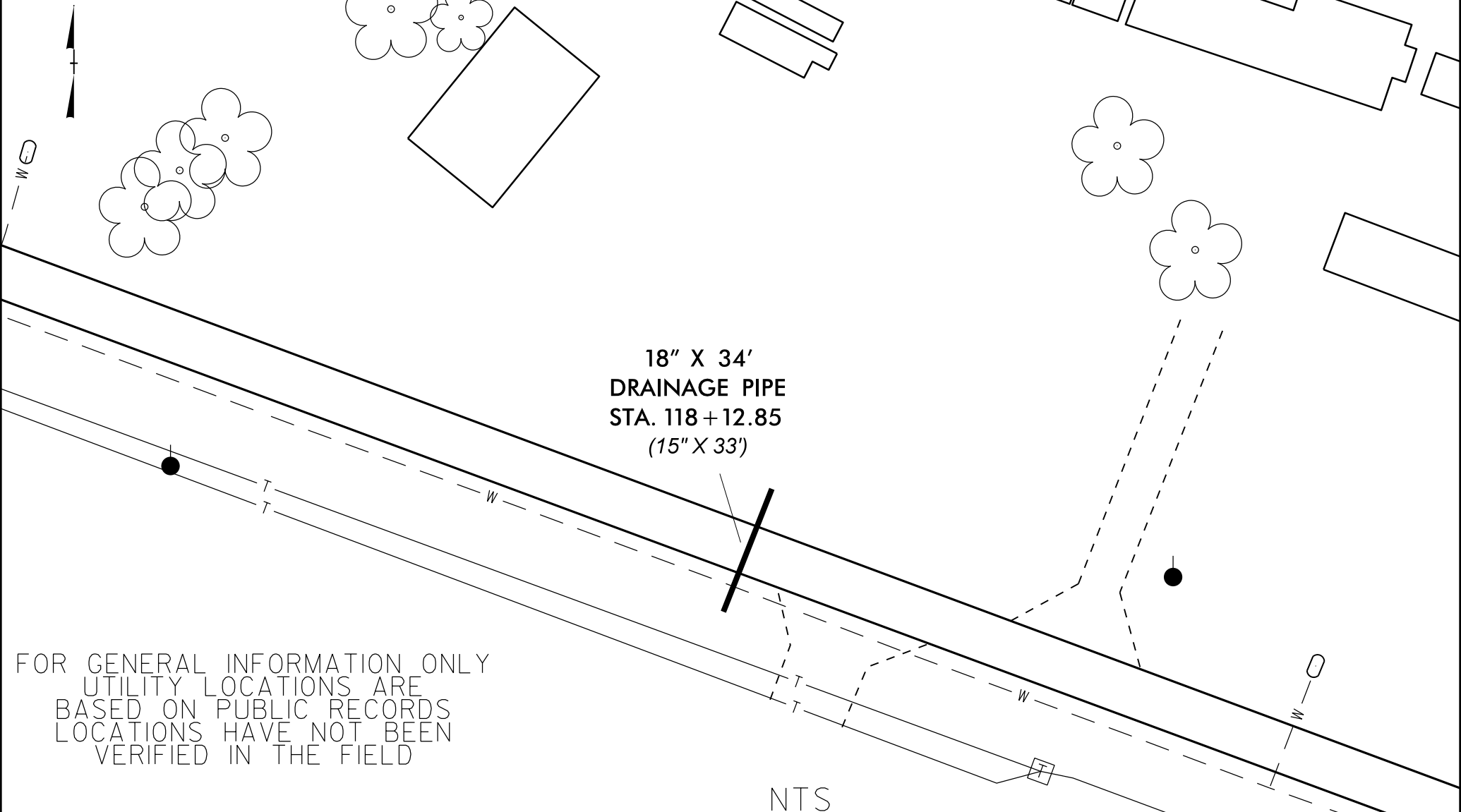
CROOKED RUN RD. (SR 1361)

48" X 32'
DRAINAGE PIPE
STA. 109+14.80
(48" X 31')

FOR GENERAL INFORMATION ONLY
UTILITY LOCATIONS ARE
BASED ON PUBLIC RECORDS
LOCATIONS HAVE NOT BEEN
VERIFIED IN THE FIELD



NTS



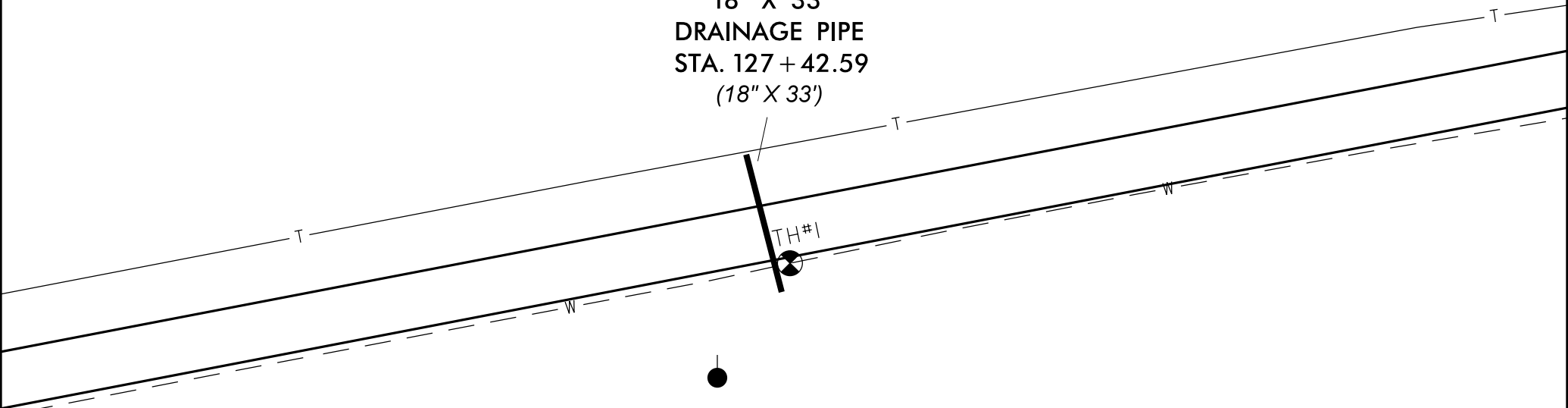
FOR GENERAL INFORMATION ONLY
UTILITY LOCATIONS ARE
BASED ON PUBLIC RECORDS
LOCATIONS HAVE NOT BEEN
VERIFIED IN THE FIELD

NTS

FOR GENERAL INFORMATION ONLY
UTILITY LOCATIONS ARE
BASED ON PUBLIC RECORDS
LOCATIONS HAVE NOT BEEN
VERIFIED IN THE FIELD



18" X 33'
DRAINAGE PIPE
STA. 127 + 42.59
(18" X 33')



NTS

PROJECT NO.	SHEET NO.	TOTAL NO.
1C.070011, ETC.		

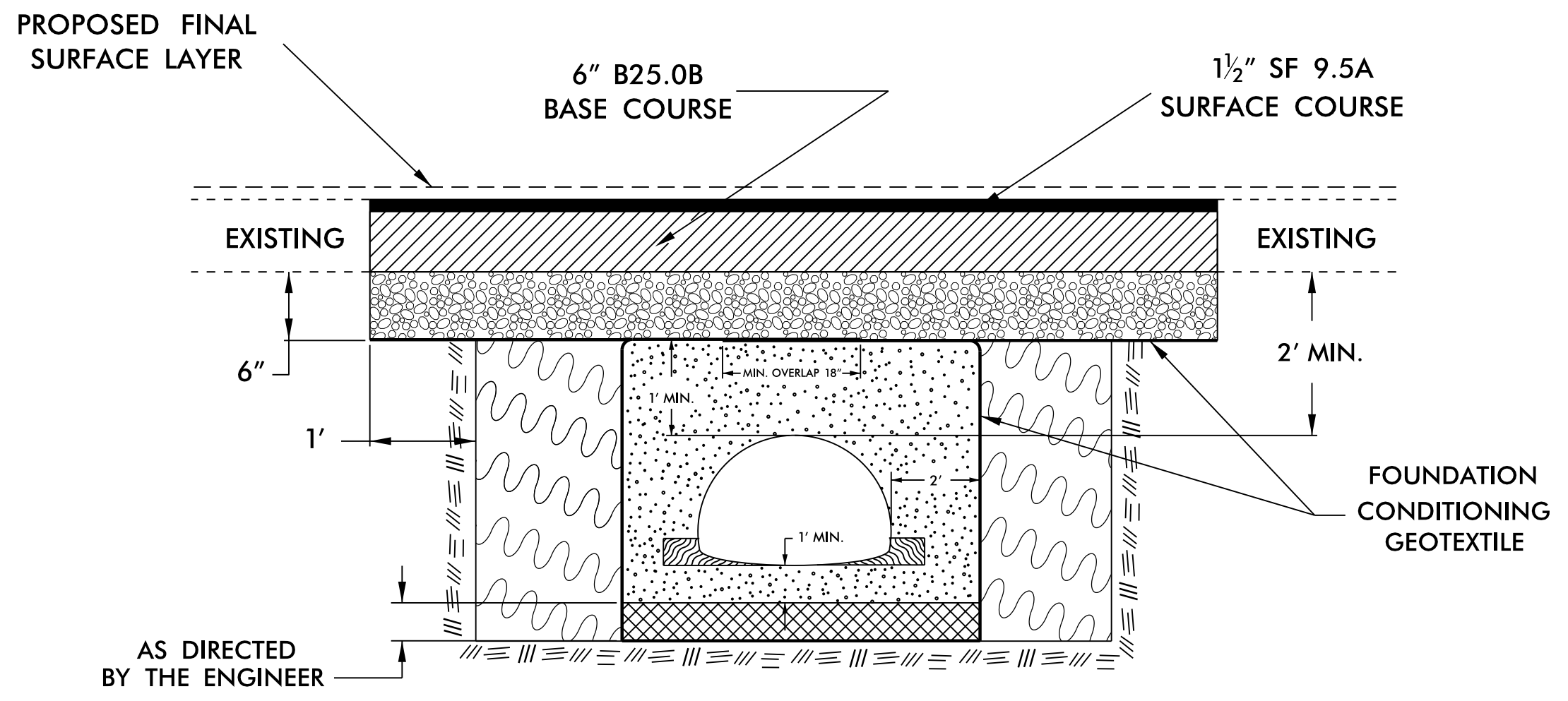
SUMMARY OF QUANTITIES

PROJECT NO.	COUNTY	MAP NO.	ROUTE	DESCRIPTION	TYP	FINAL SURFACE TESTING REQUIRED	LENGTH MI	WIDTH FT	MOBILIZATION LS	BORROW CY	CONDITIONING EXISTING BASE MSY	PRIME COAT GAL	FOUNDATION CONDITIONING MATERIAL, MINOR STRUCTURES TONS	FOUNDATION CONDITIONING GEOTEXTILE SY	AGGREGATE BASE COURSE TON	18" DRAINAGE PIPE LF	24" DRAINAGE PIPE LF	30" DRAINAGE PIPE LF	36" DRAINAGE PIPE LF	42" DRAINAGE PIPE LF	48" DRAINAGE PIPE LF	95" X 67" CAA Pipe Arch, (.135" Thick Single Pipe, 60 Feet Long) EA	INCIDENTAL STONE BASE TON	SHOULDER RECONSTRUCTION SMI	BASE COURSE, B25.08 TON	SURFACE COURSE, SF9.5A TON	SURFACE COURSE, S9.5B TON	ASPHALT BINDER FOR PLANT MIX TON	ASPHALT PLANT MIX PAVEMENT REPAIR TON	RIP RAP, CLASS B TON	TEMPORARY SILT FENCE LF	MATting FOR EROSION CONTROL SY	WATTLE LF	POLYACRYLAMIDE (PAM) LB	SEED & MULCHING ACR
1C.070011	Pasquotank	1	SR 1469	FROM SR 1354 TO STATION 32 + 44	1	NO	0.6	22	1	30	8.0	2,710										100	1.2			961	58			100		40	7	0.5	
1C.070040	Pasquotank	2	SR 1361	FROM SR 1356 TO SR 1360	2	NO	2.58	18	*	115			130	766	123	281	148	36	77	40	32	1	100	5.16	1,413	2,552		233	126	60	650	64	250	14	2.6
							3.18		1	145	8.0	2,710	130	766	123	281	148	36	77	40	32	1	200	6.36	1,413	2,552	961	291	126	60	750	64	290	21	3.1

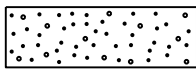

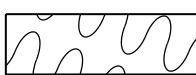
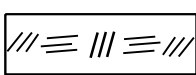


THERMOPLASTIC AND PAINT QUANTITIES

PROJECT NO.	COUNTY	MAP NO.	ROUTE	DESCRIPTION	LENGTH	WIDTH	TEMPORARY TRAFFIC CONTROL LS	4" X 90 M WHITE THERMO LF	4" X 120 M YELLOW THERMO LF
1C.070011	Pasquotank	1	SR 1469	FROM SR 1354 TO	0.6	22	1	6,456	3,960
1C.070040	Pasquotank	3	SR 1361	FROM SR 1356 TO SR 1360	2.58	18	*	27,500	17,028
TOTAL					3.18		1	33,956	20,988

INSTALLATION DETAIL



CORRUGATED ALUMINUM ALLOY PIPE ARCH WITH OR WITHOUT HEADWALL

- | | | | |
|---|--|---|---|
|  | #57 STONE |  | TAKE CARE TO FULLY COMPACT HAUNCH ZONE OF PIPE BACKFILL |
|  | SELECT BACKFILL MATERIAL CLASS III OR CLASS II OR OTHER APPROVED MATERIAL BY THE ENGINEER |  | UNDISTURBED EARTH MATERIAL |
|  | SELECT MATERIAL CLASS V OR VI FOR FOUNDATION CONDITIONING. ENCAPSULATE WITH ENGINEERING FABRIC AS DIRECTED BY THE ENGINEER | | |
|  | AGGREGATE BASE COURSE | | |

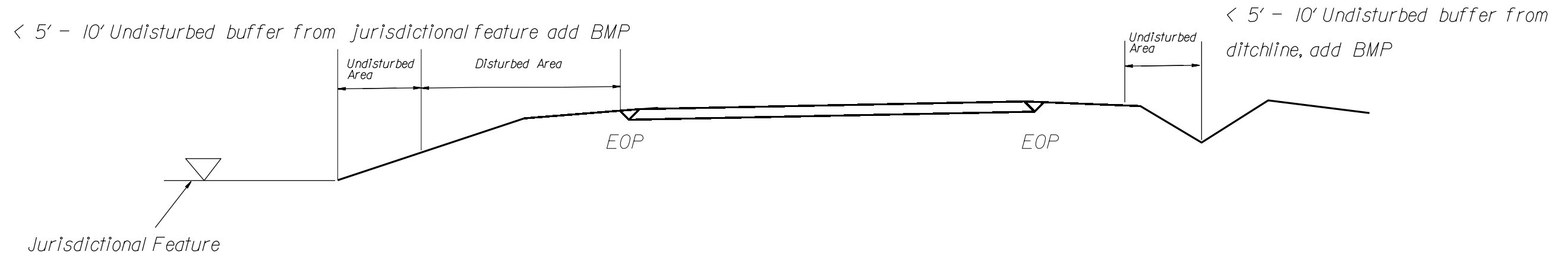
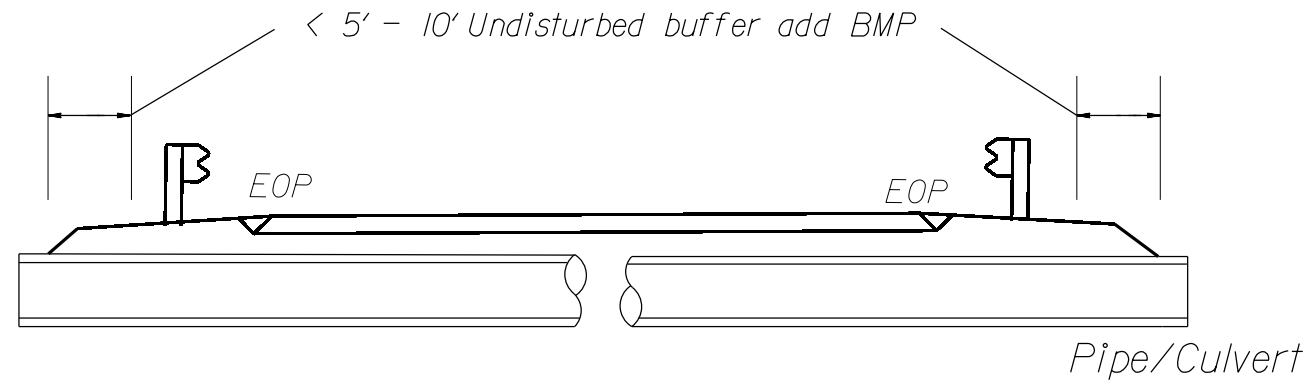
- NOT TO SCALE -

REVISIONS
 09-MAR-2012 jf44
 C:\Current\Projects\DIVISION PROPOSALS\1.C.070011.ETC Title & Typical.s.dgn
 C:\Current\Projects\DIVISION PROPOSALS\1.C.070011.ETC Title & Typical.s.dgn

NOTES: Less than 5' - 10' undisturbed buffer from ROW, ditchline, water feature, or drainage inlet, add BMP.

BMP Options: Wattle or Silt Fence

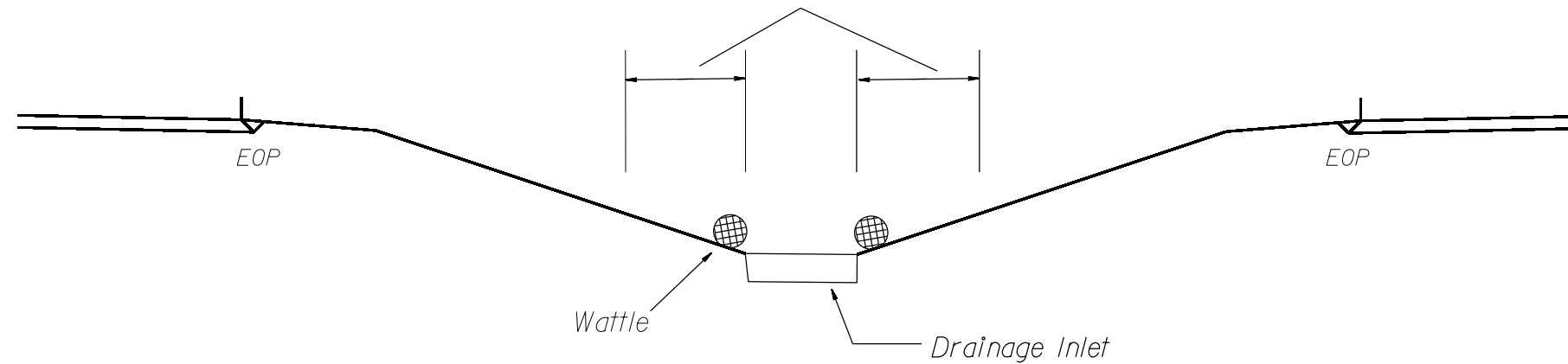
EROSION CONTROL DETAIL



Use BMP's if shoulders and/or frontslopes and/or ditchline and/or backslopes are disturbed



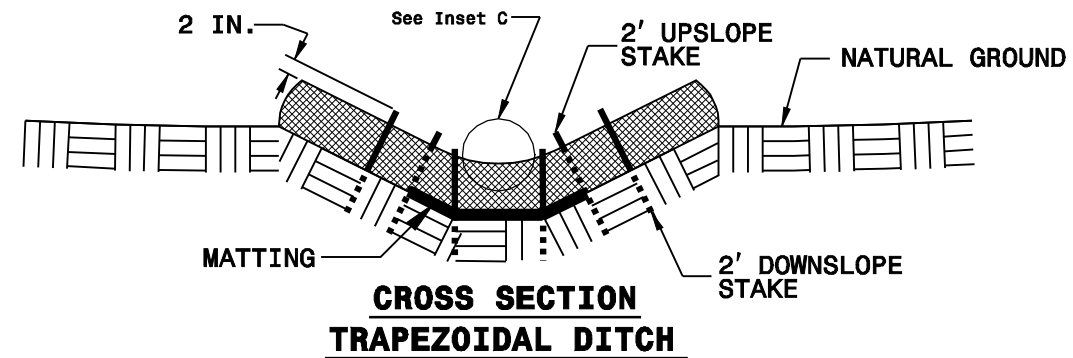
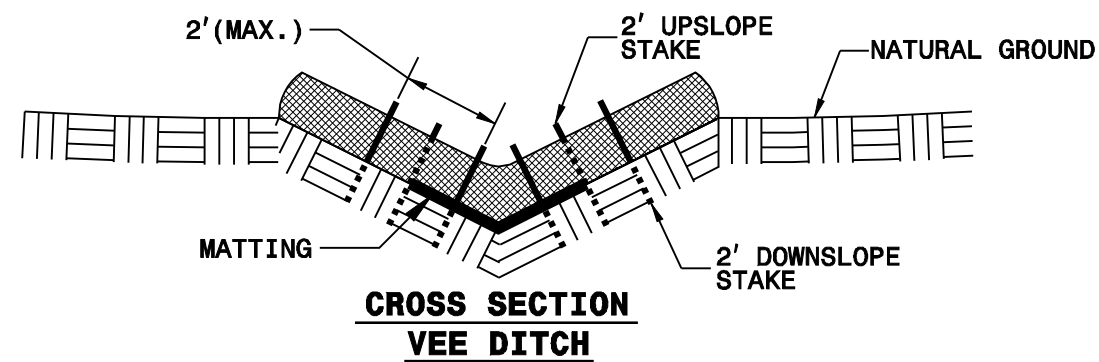
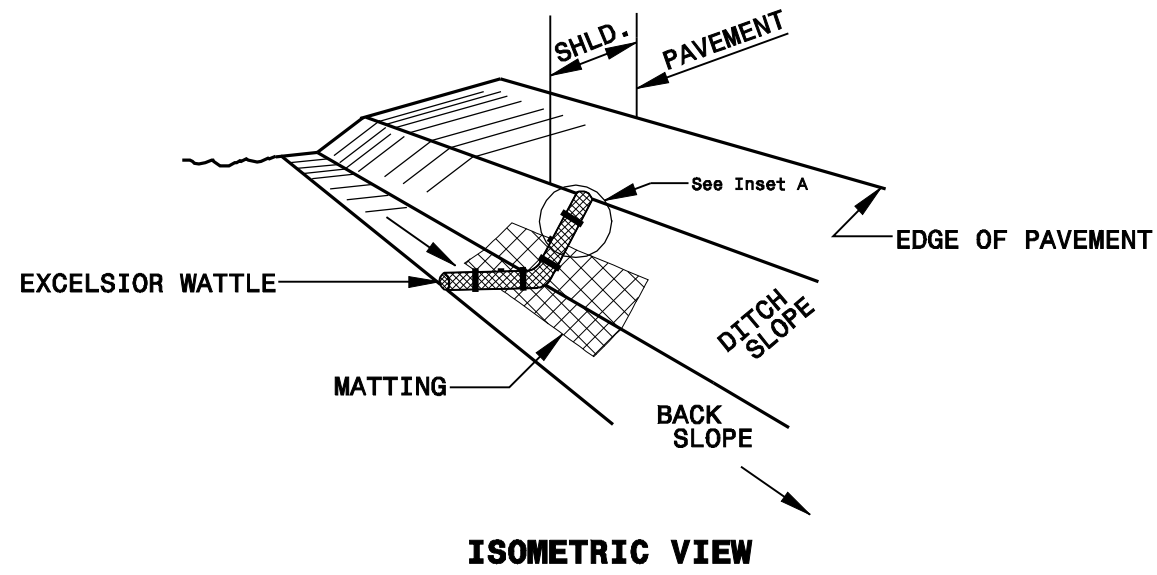
< 5' - 10' Undisturbed buffer from inlet, add wattle



NOT TO SCALE

PROJECT REFERENCE NO. X-XXXX		SHEET NO. EC-26	
RWY SHEET NO.		HYDRAULICS ENGINEER	
ROADWAY DESIGN ENGINEER			

WATTLE WITH POLYACRYLAMIDE (PAM) DETAIL



NOTES:

USE MINIMUM 12 IN. DIAMETER EXCELSIOR WATTLE.

USE 2 FT. WOODEN STAKES WITH A 2 IN. BY 2 IN. NOMINAL CROSS SECTION.

ONLY INSTALL WATTLE(S) TO A HEIGHT IN DITCH SO FLOW WILL NOT WASH AROUND WATTLE AND SCOUR DITCH SLOPES AND AS DIRECTED.

INSTALL A MINIMUM OF 2 UPSLOPE STAKES AND 4 DOWNSLOPE STAKES AT AN ANGLE TO WEDGE WATTLE TO BOTTOM OF DITCH.

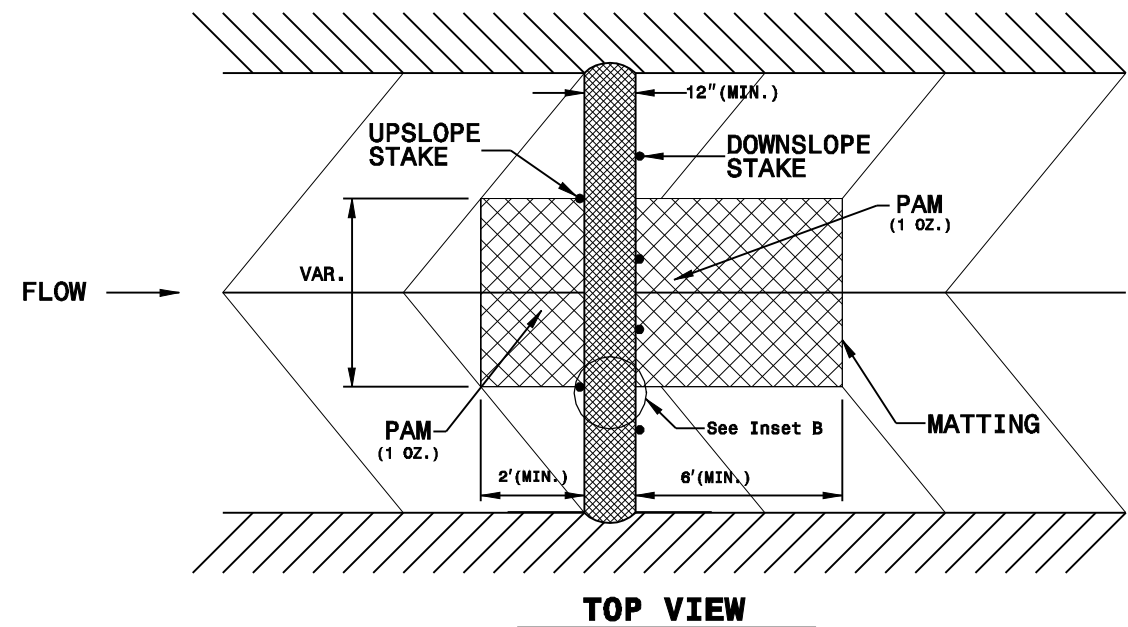
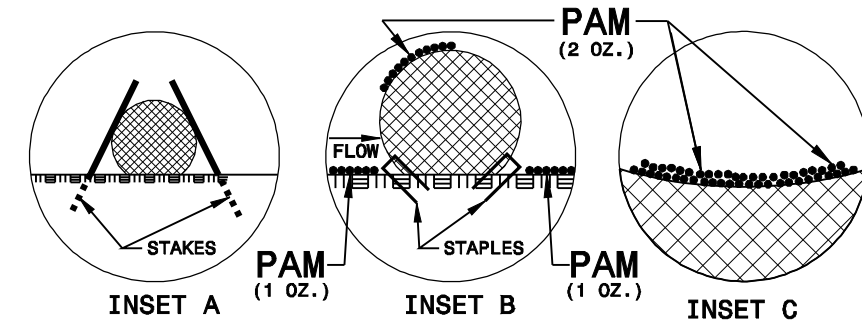
PROVIDE STAPLES MADE OF 0.125 IN. DIAMETER STEEL WIRE FORMED INTO A U SHAPE NOT LESS THAN 12" IN LENGTH.

INSTALL STAPLES APPROXIMATELY EVERY 1 LINEAR FOOT ON BOTH SIDES OF WATTLE AND AT EACH END TO SECURE IT TO THE SOIL.

INSTALL MATTING IN ACCORDANCE WITH SECTION 1631 OF THE STANDARD SPECIFICATIONS.

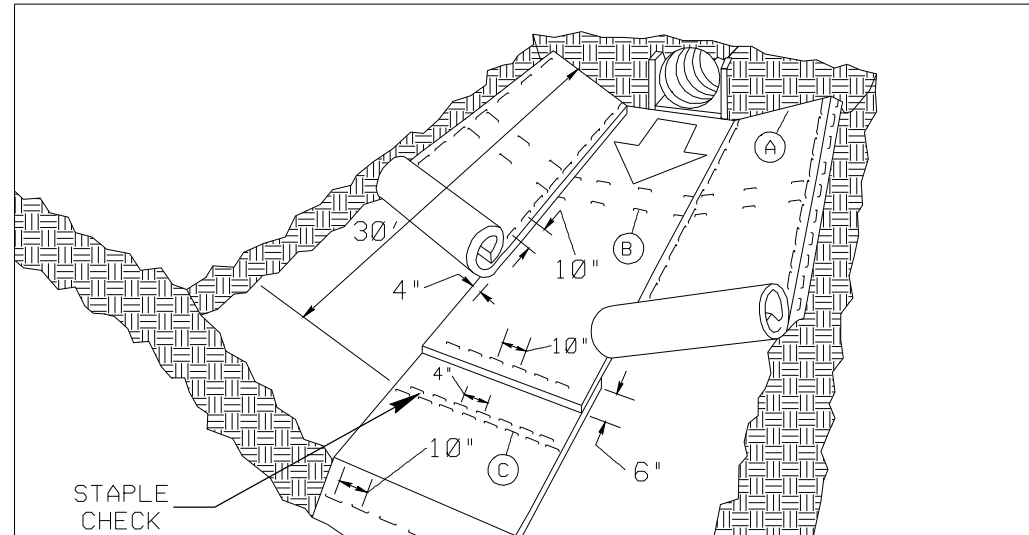
PRIOR TO POLYACRYLAMIDE (PAM) APPLICATION, OBTAIN A SOIL SAMPLE FROM PROJECT LOCATION, AND FROM OFFSITE MATERIAL, AND ANALYZE FOR APPROPRIATE PAM FLOCCULANT TO BE APPLIED TO EACH WATTLE.

INITIALLY APPLY 2 OUNCES OF ANIONIC OR NEUTRALLY CHARGED PAM OVER WATTLE WHERE WATER WILL FLOW AND 1 OUNCE OF PAM ON MATTING ON EACH SIDE OF WATTLE. REAPPLY PAM AFTER EVERY RAINFALL EVENT THAT IS EQUAL TO OR EXCEEDS 0.50 IN.



PROJECT REFERENCE NO. X-XXXX	SHEET NO. EC-26
HW SHEET NO.	
ROADWAY DESIGN ENGINEER	HYDRAULICS ENGINEER

MATTING INSTALLATION DETAIL



MATTING IN DITCHES

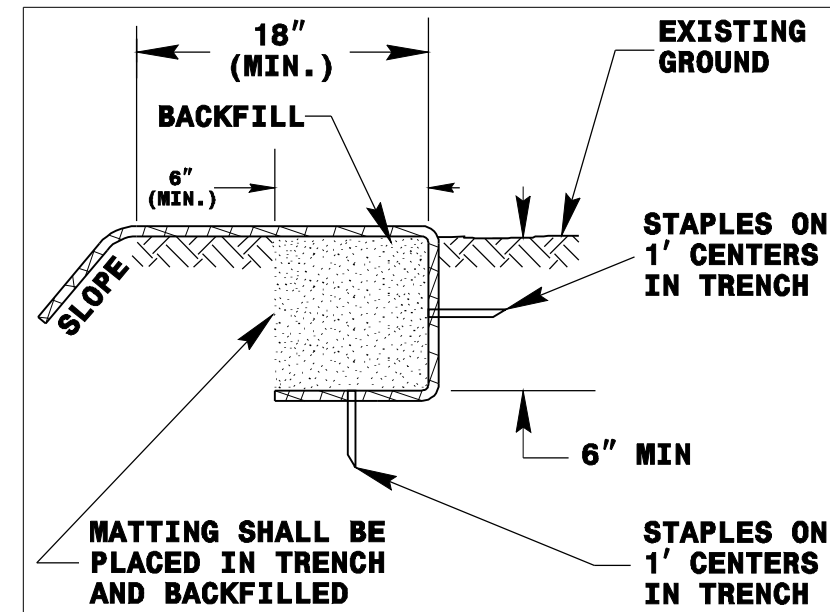
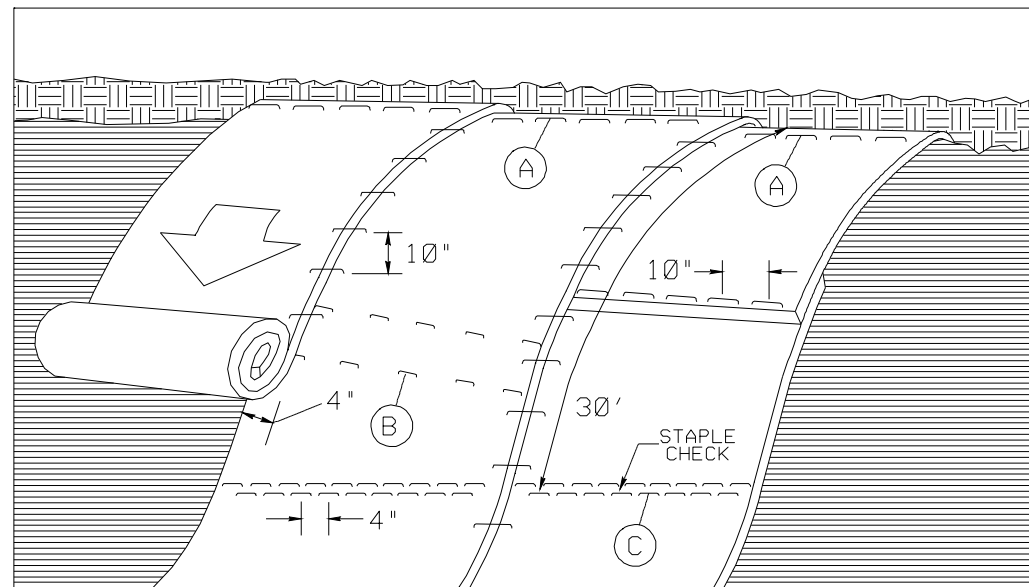


DIAGRAM (A)



MATTING ON SLOPES

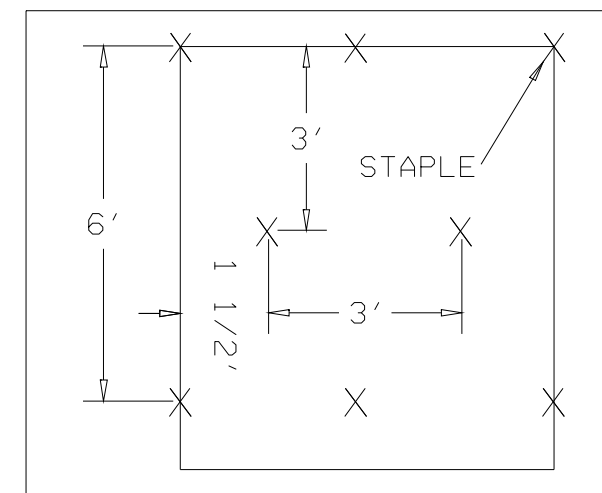


DIAGRAM (B)

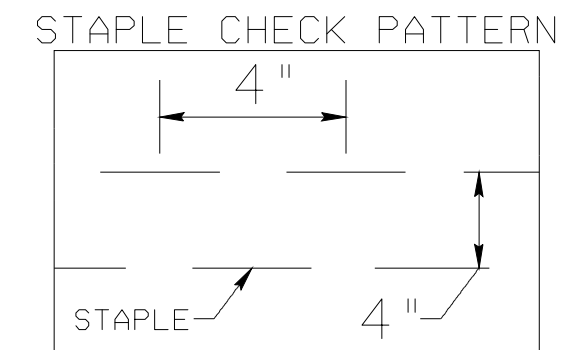


DIAGRAM (C)

NOTES:

THIS DETAIL APPLIES TO STRAW, EXCELSIOR, AND PERMANENT SOIL REINFORCEMENT MAT (PSRM) INSTALLATION.

STAPLES SHALL BE NO. 11 GAUGE STEEL WIRE FORMED INTO A "U" SHAPE WITH A MINIMUM THROAT WIDTH OF 1 INCH AND NOT LESS THAN 6 INCHES IN LENGTH.

NOT TO SCALE