



STATE OF NORTH CAROLINA  
DEPARTMENT OF TRANSPORTATION

ROY COOPER  
GOVERNOR

JAMES H. TROGDON, III  
SECRETARY

October 16, 2017

**Addendum No. 1**

Contract No.: DA00391

WBS Element: 45557.3.1

*Replacement of Bridge #8 on US264 / NC45 over Burgess Mill Creek in Hyde County*

To Whom It May Concern:

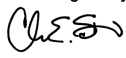
Reference is made to the proposal and plans previously furnished for this project.

The following revision has been made to the proposal:

Plan Sheet #4 has been revised to include a detail for a "Performed Scour Hole". Please void existing Plan Sheet #4 and replace with revised Plan Sheet #4.

If you choose the "Electronic Bid Preparation with Manual Delivery Method," place DA00391.001 in the same folder with DA00391.EBS, so that Expedite Bid will properly apply the addendum.

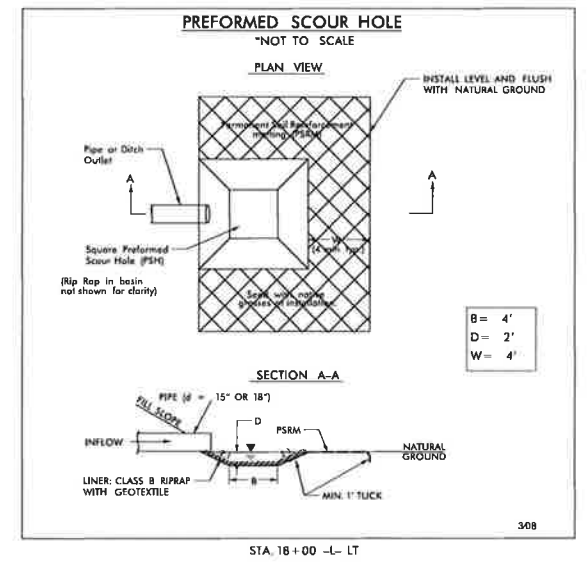
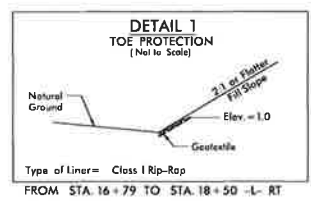
Sincerely,

DocuSigned by:  
  
CDAEAC77A6394FB...

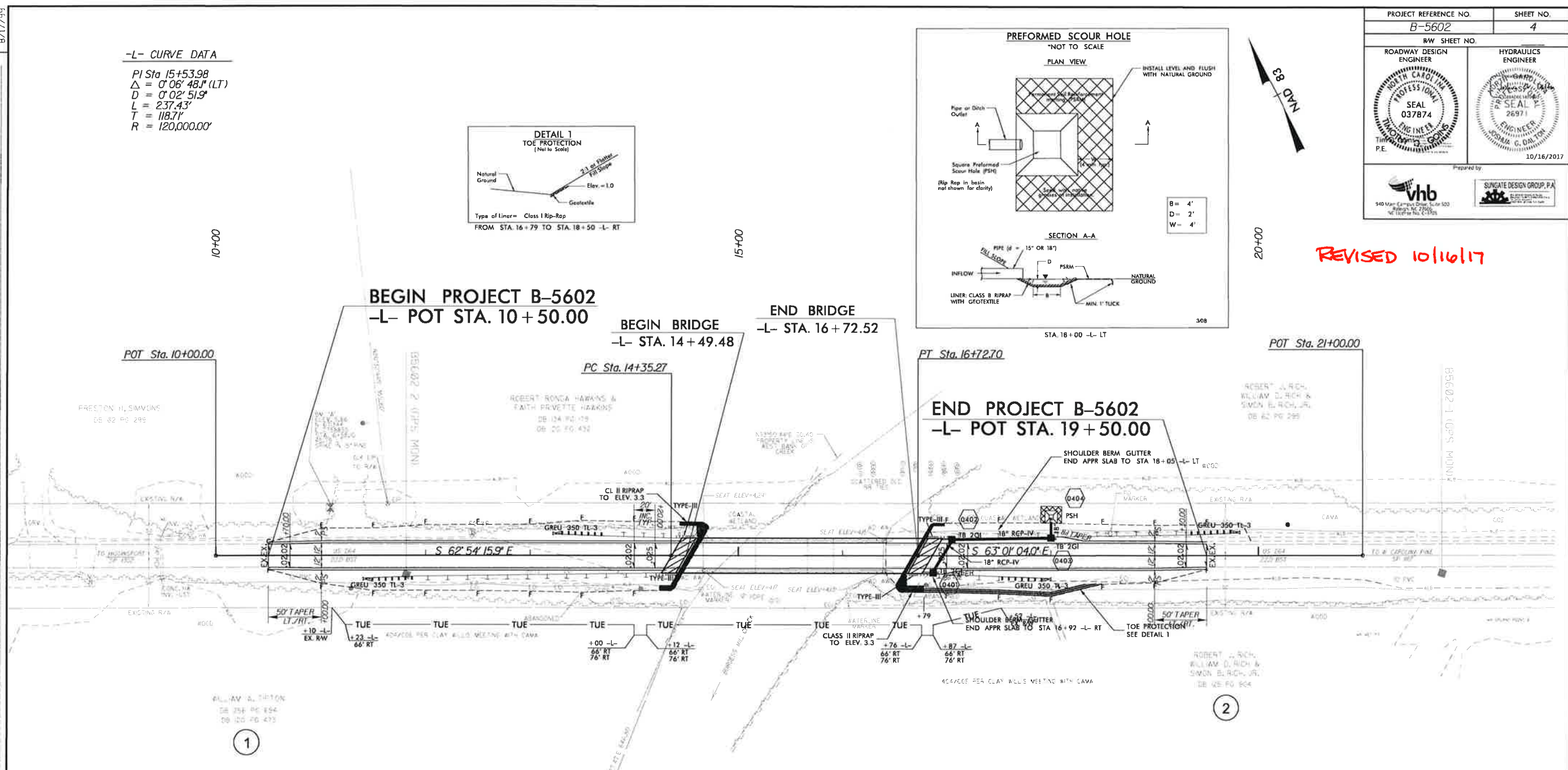
C. E. Slachta  
Division Proposals Engineer

cc: C. W. Bridgers, Jr, PE  
C. S. Mebane, PE  
D. S. Lee, PE.  
J. S. Abel, Jr.

-L- CURVE DATA  
 PI Sta 15+53.98  
 $\Delta = 0' 06' 48.1''$  (LT)  
 $D = 0' 02' 51.9''$   
 $L = 237.43'$   
 $T = 118.71'$   
 $R = 120,000.00'$



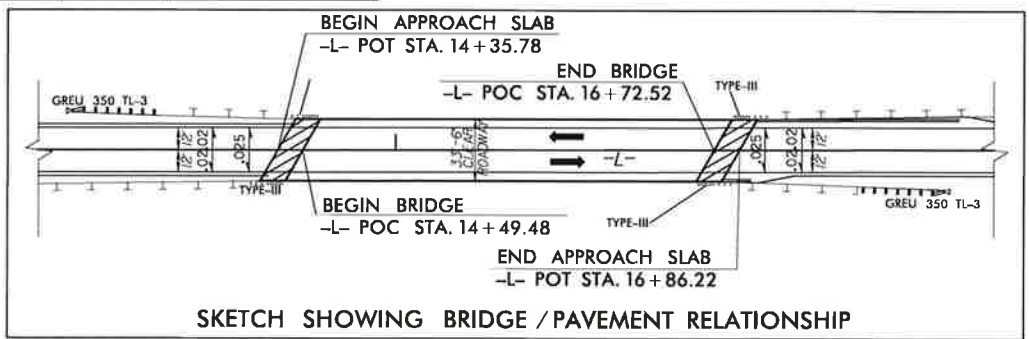
REVISED 10/16/17



**RIGHT OF WAY AREA DATA**

PARCEL NO.	PROPERTY OWNERS NAMES	TOTAL AREA	AREA TAKEN	AREA REMAINING RT.	AREA REMAINING LT.	CONST. EASEMENT	PERM. DRAIN EASEMENT	TEMP. UTIL. EASEMENT
1	WILLIAM W. TIPTON							0.122 acres
2	ROBERT J. RICH, WILLIAM D. RICH & SIMON B. RICH, JR.							0.104 acres

**DATUM DESCRIPTION**  
 THE LOCALIZED COORDINATE SYSTEM DEVELOPED FOR THIS PROJECT IS BASED ON THE STATE PLANS COORDINATES ESTABLISHED BY NCDOT FOR MONUMENT 'B5602-2' WITH NAD 83/NA 2011 STATE PLANS GRID COORDINATES OF NORTHING: 611293.450+/- EASTING: 2758890.857+/- ELEVATION: 4.591+/-  
 THE AVERAGE COMBINED GRID FACTOR USED ON THIS PROJECT (GROUND TO GRID +1%: 0.99885394 THE N.C. LANGRIS GRID BEARING AND LOCALIZED HORIZONTAL GRID DISTANCE FROM 'B5602-2' TO H- STATION 15 0: 57°09'01.38"E 182.414'  
 ALL LINEAR DIMENSIONS ARE LOCALIZED HORIZONTAL DISTANCES VERTICAL DATUM USED IS NAVD 88



FOR -L- PROFILE SEE SHEET 5

REVISIONS

8/17/99  
15/15/2017  
B5602-2-dtl-ps+04.dgn  
NOTES: RACHELLE BEAUREGARD WITH VHE/UNSATURATED WETLANDS