

STATE	STATE PROJECT REFERENCE NO.	SHEET NO.	TOTAL SHEETS
N.C.	14701.1028010	1	
STATE PROJ. NO.	F.A. PROJ. NO.	DESCRIPTION	

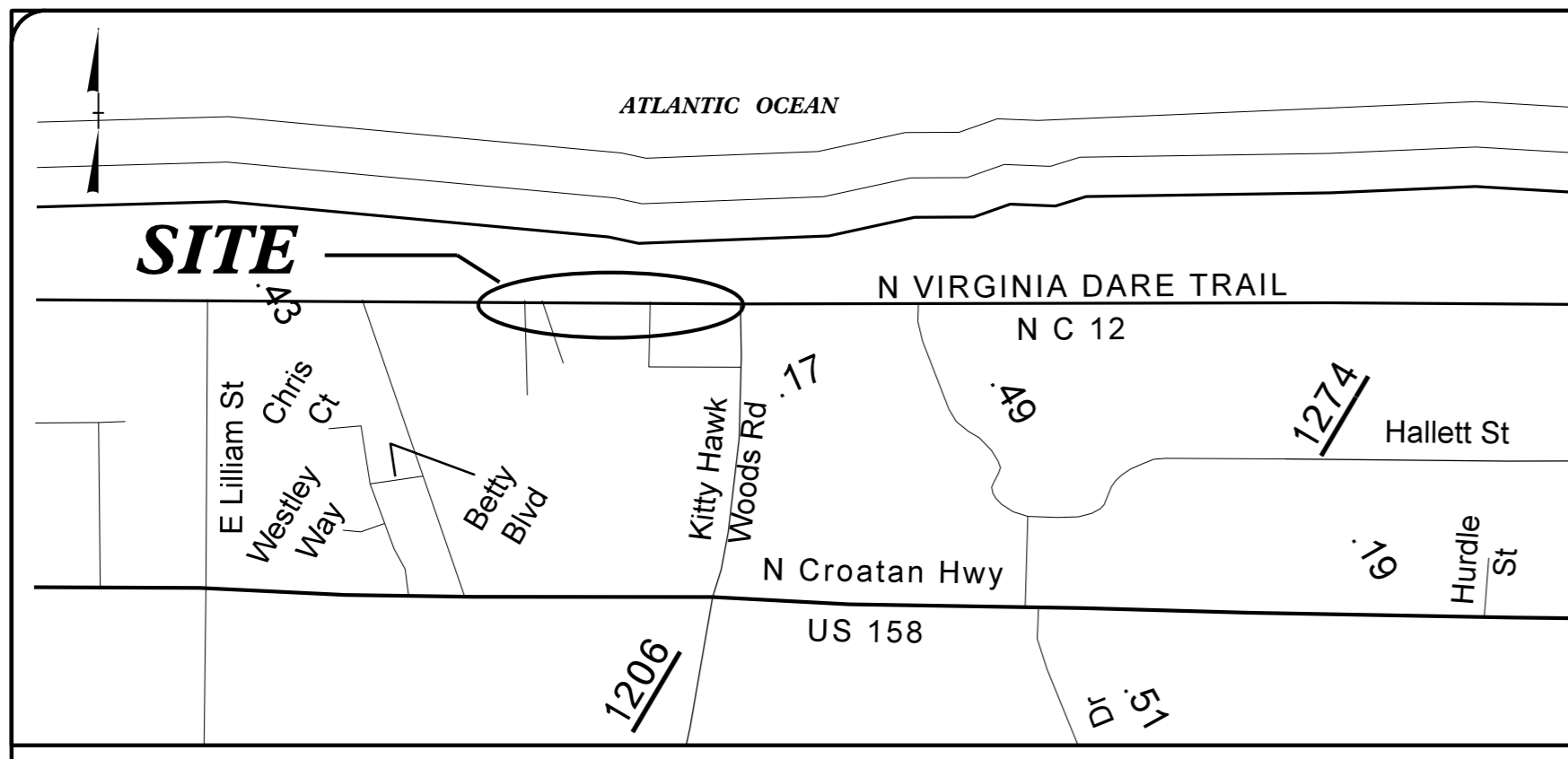
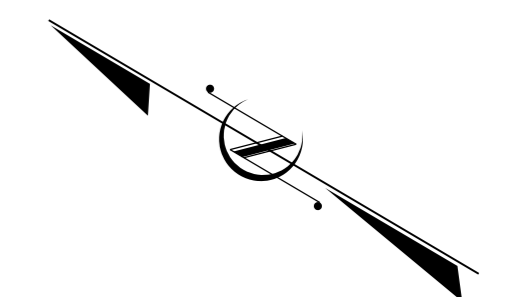
STATE OF NORTH CAROLINA
DIVISION OF HIGHWAYS

DARE COUNTY

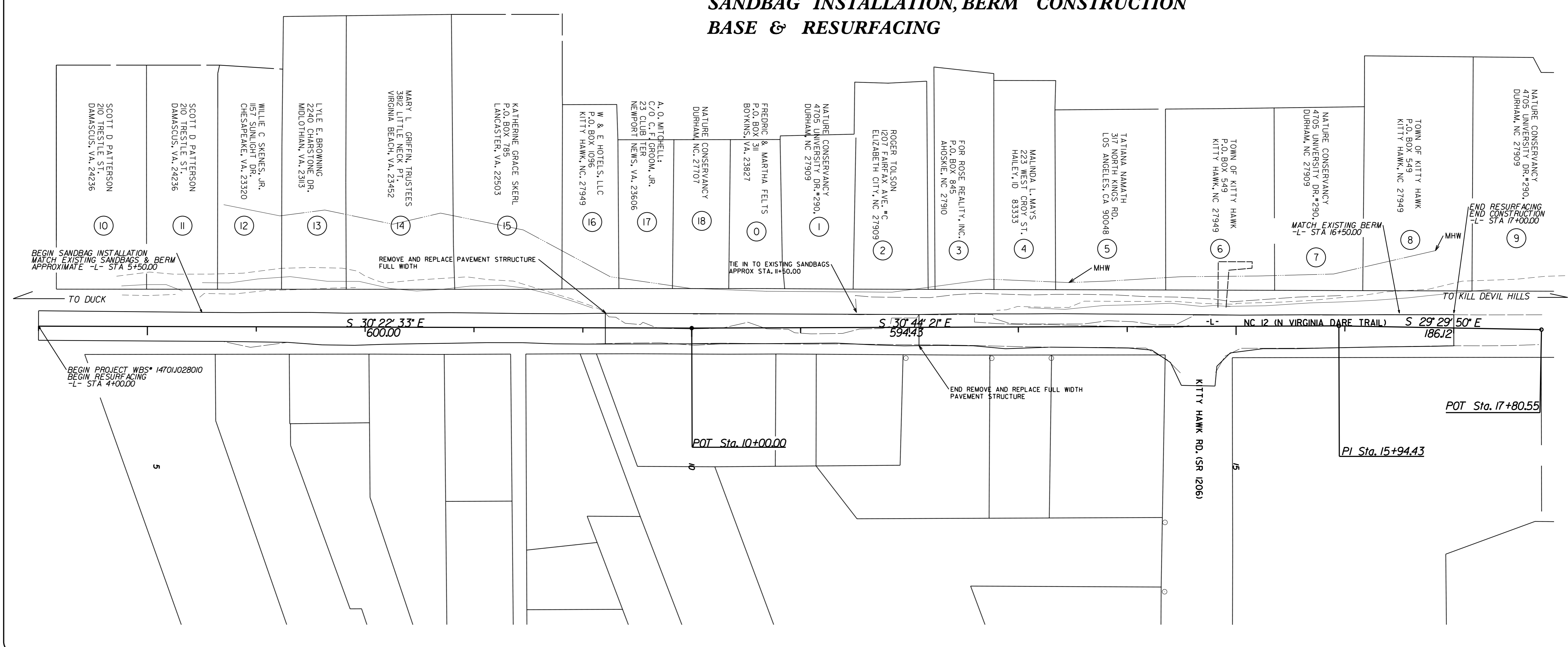
LOCATION: NC 12 (N. VIRGINIA DARE TRAIL) BETWEEN
SR 1496(STARFISH LN.) & SR 1206(KITTY HAWK RD.)

TYPE OF WORK:

**SANDBAG INSTALLATION, BERM CONSTRUCTION
BASE & RESURFACING**

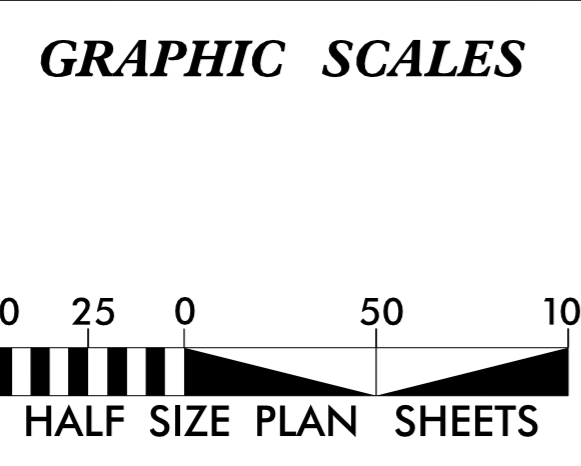


VICINITY MAP



WBS ELEMENT: 14701.1028010

CONTRACT: DA00273



PROJECT LENGTH

LENGTH STATE PROJECT 14701.1028010 = 0.246 MILES

Prepared in the Office of:
DIVISION OF HIGHWAYS
113 Airport Dr., Edenton NC, 27930

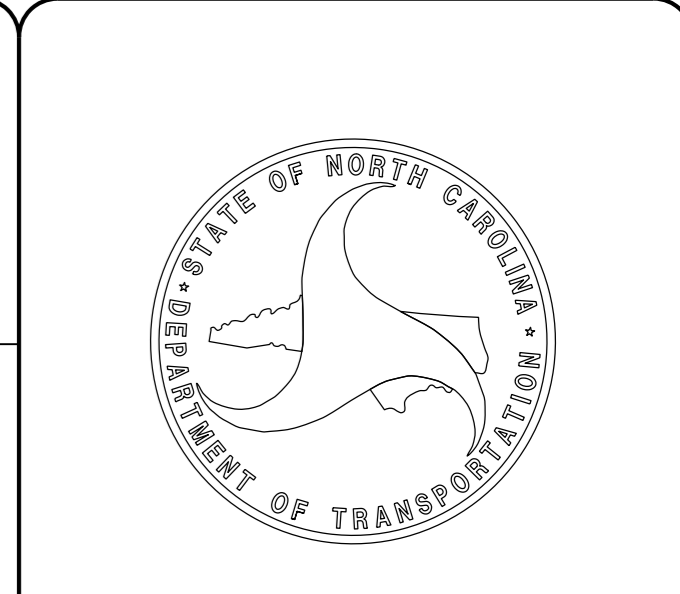
2012 STANDARD SPECIFICATIONS

LETTING DATE: _____

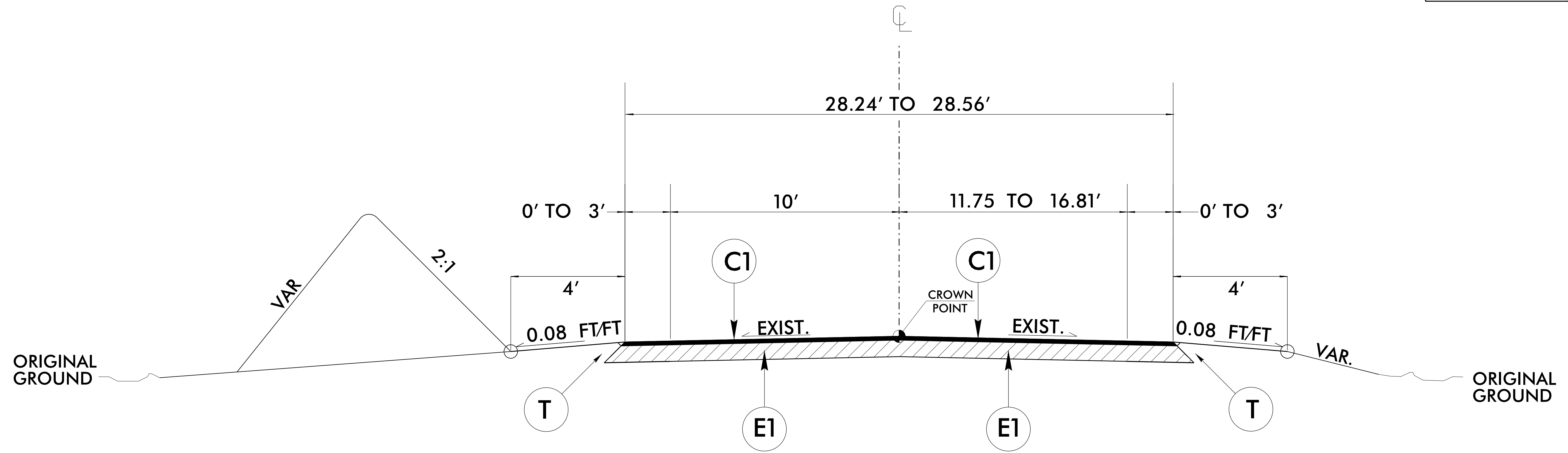
W. B. HOBBS, PE
DIVISION PROJECT MANAGER

CHRIS SLACHTA
DIVISION PROPOSAL ENGINEER

S. P. FENWICK, PLS
DIVISION DESIGN ENGINEER



15-OCT-2015 11:43 C:\Users\stfenwick\Desktop\KH - WASH\ISP\028108_DIDD.C_.tshl.dgn AT DICAD265783 stfenwick

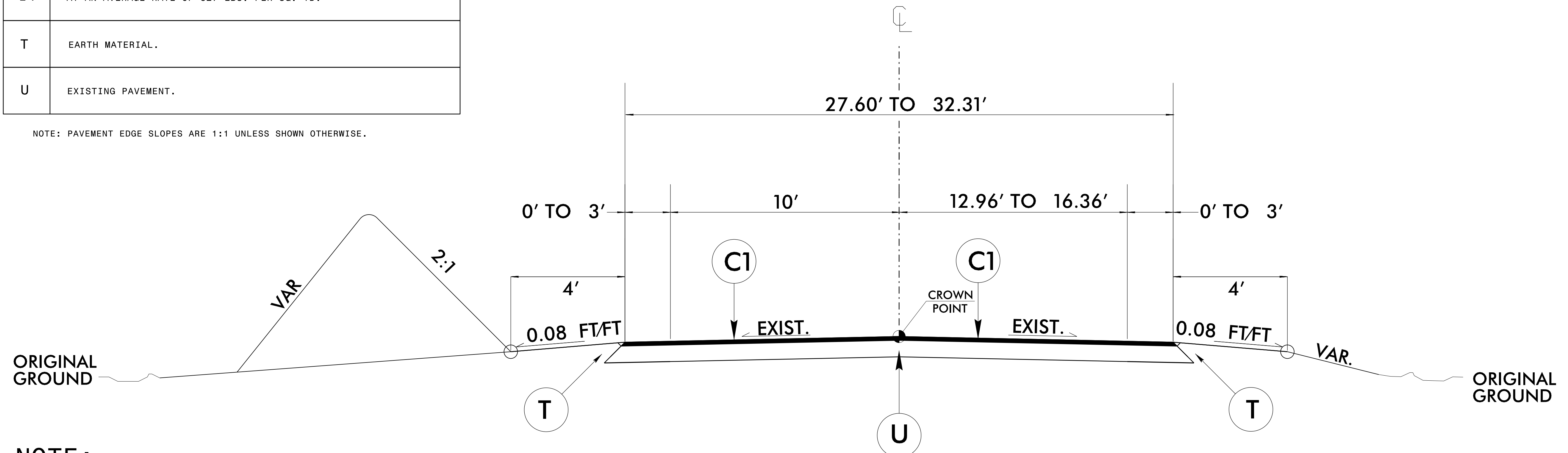


PAVEMENT SCHEDULE

C1	PROP. APPROX. 1½" ASPHALT CONCRETE SURFACE COURSE, TYPE S 9.5B, AT AN AVERAGE RATE OF 168 LBS. PER SQ. YD.
E1	PROP. APPROX. 5½" ASPHALT CONCRETE BASE COURSE, TYPE B 25.0B, AT AN AVERAGE RATE OF 627 LBS. PER SQ. YD.
T	EARTH MATERIAL.
U	EXISTING PAVEMENT.

NOTE: PAVEMENT EDGE SLOPES ARE 1:1 UNLESS SHOWN OTHERWISE.

TYPICAL SECTION NO. 2 -L- STA. 9+20.67 TO STA.12+08.74



NOTE:

SEE SHEET 2-A FOR SANDBAG DETAIL.

NTS

TYPICAL SECTION NO. 1 -L- STA. 4+00.00 TO STA. 9+20.67 -L- STA. 12+08.74 TO STA. 17+00.00

6/12/99
09-OCT-2015 10:04
C:\User\BVP\Documents\14701.1028010\14701.1028010.dgn

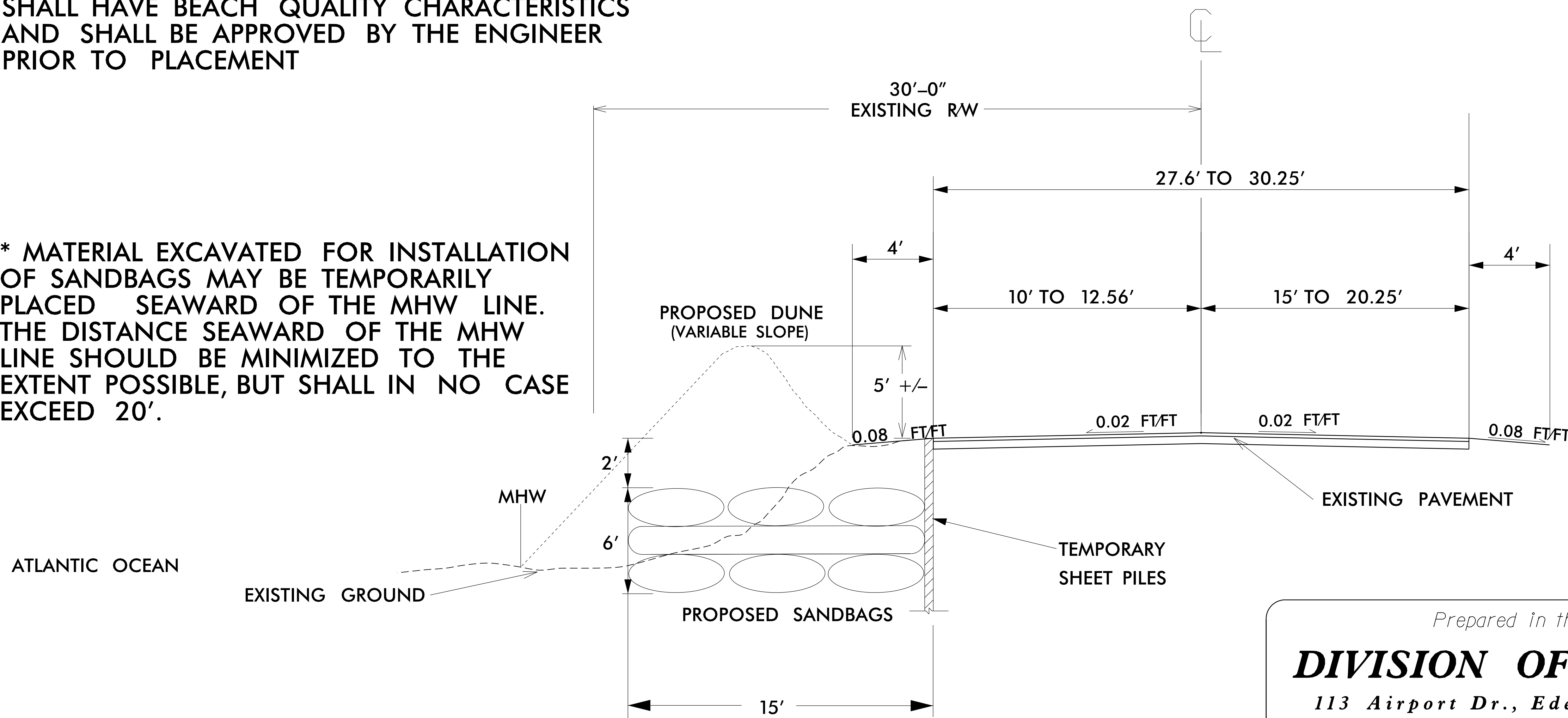
10/26/98

PROJECT REFERENCE NO. 14701028010	SHEET NO. 2-A
--------------------------------------	------------------

EROSION PROTECTION NC 12 KITTY HAWK

* MATERIAL USED FOR DUNE CONSTRUCTION SHALL HAVE BEACH QUALITY CHARACTERISTICS AND SHALL BE APPROVED BY THE ENGINEER PRIOR TO PLACEMENT

* MATERIAL EXCAVATED FOR INSTALLATION OF SANDBAGS MAY BE TEMPORARILY PLACED SEAWARD OF THE MHW LINE. THE DISTANCE SEAWARD OF THE MHW LINE SHOULD BE MINIMIZED TO THE EXTENT POSSIBLE, BUT SHALL IN NO CASE EXCEED 20'.



NOTE:
- BAGS (FILLED) SHOULD BE 5' WIDE,
15' LONG & 2' HIGH

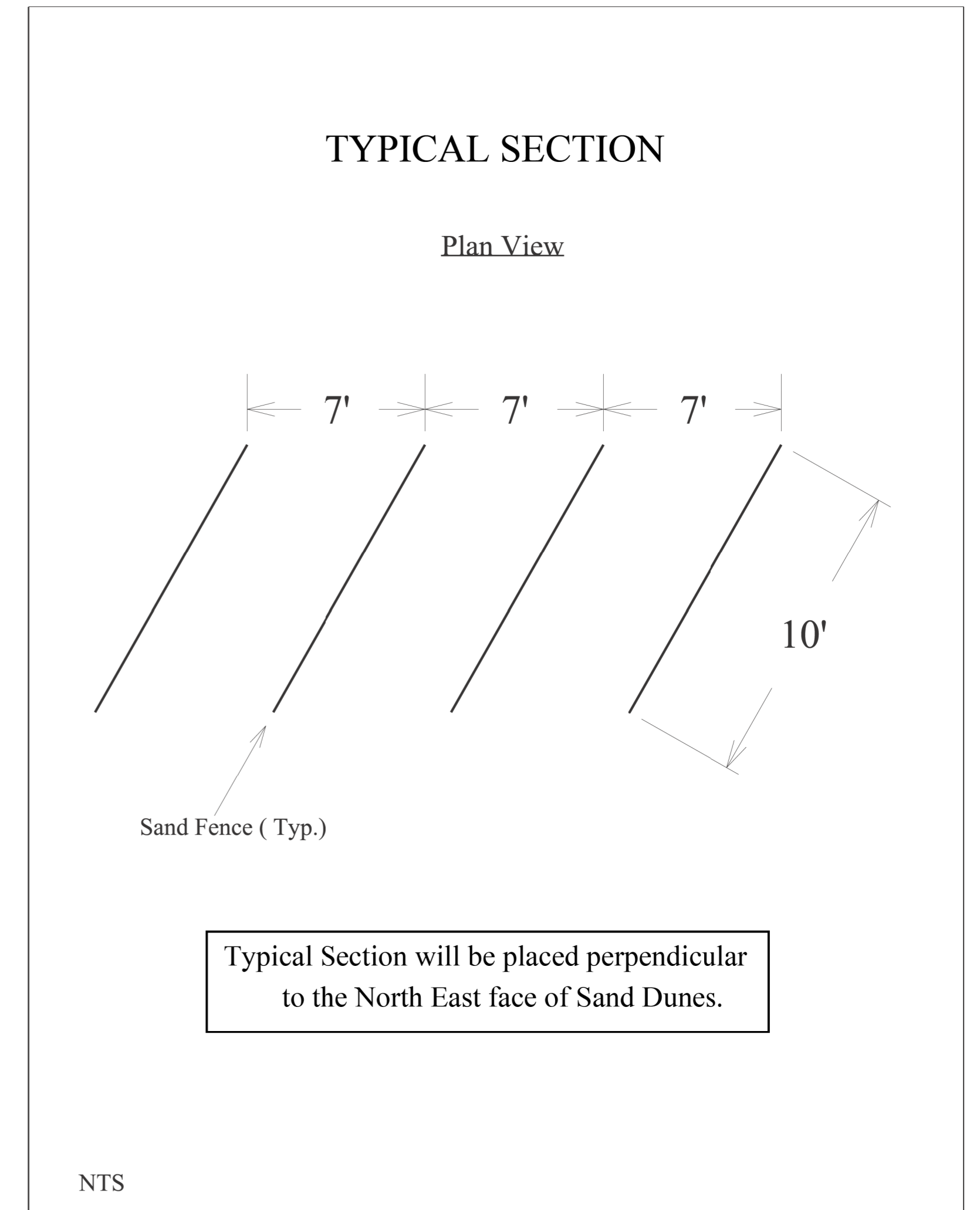
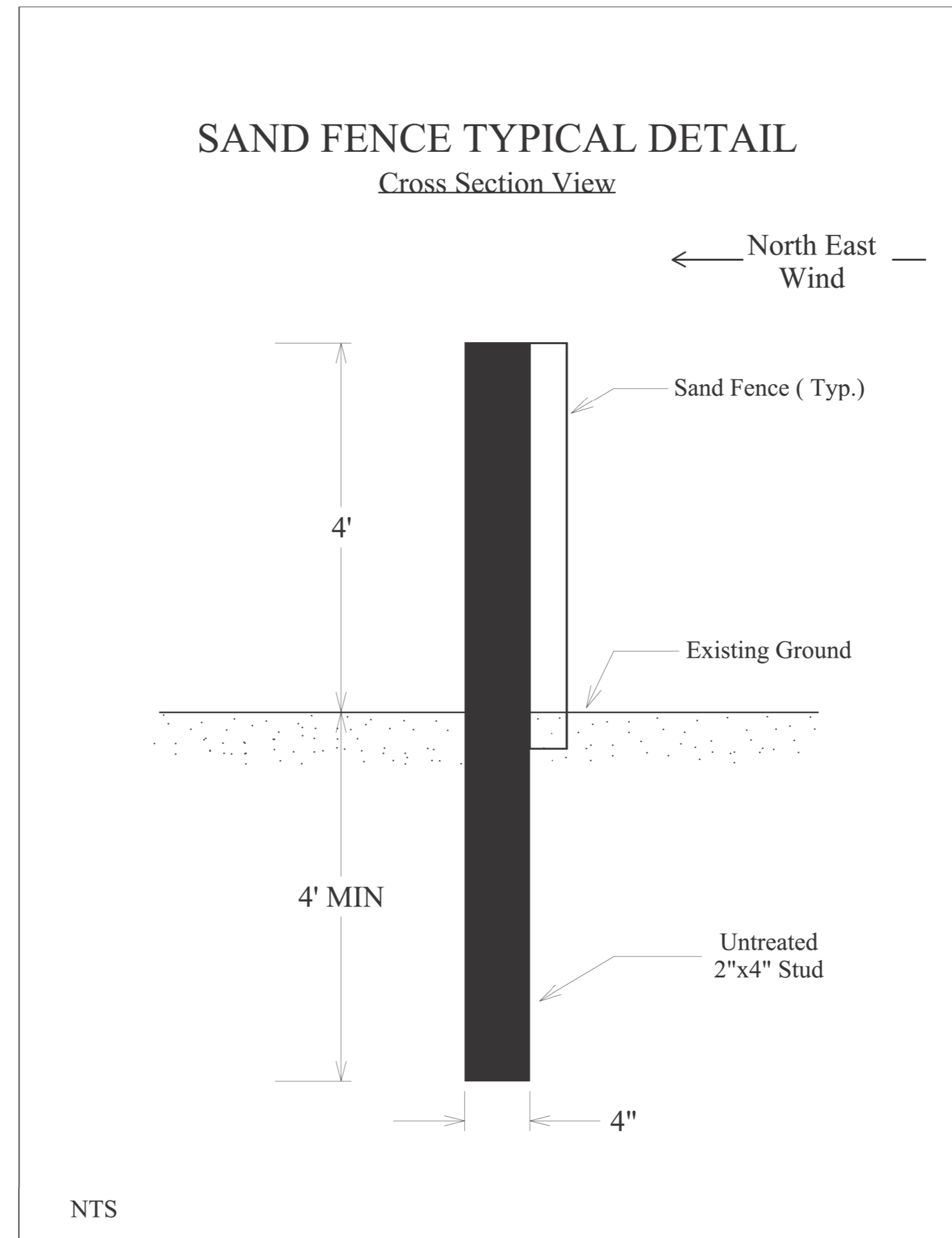
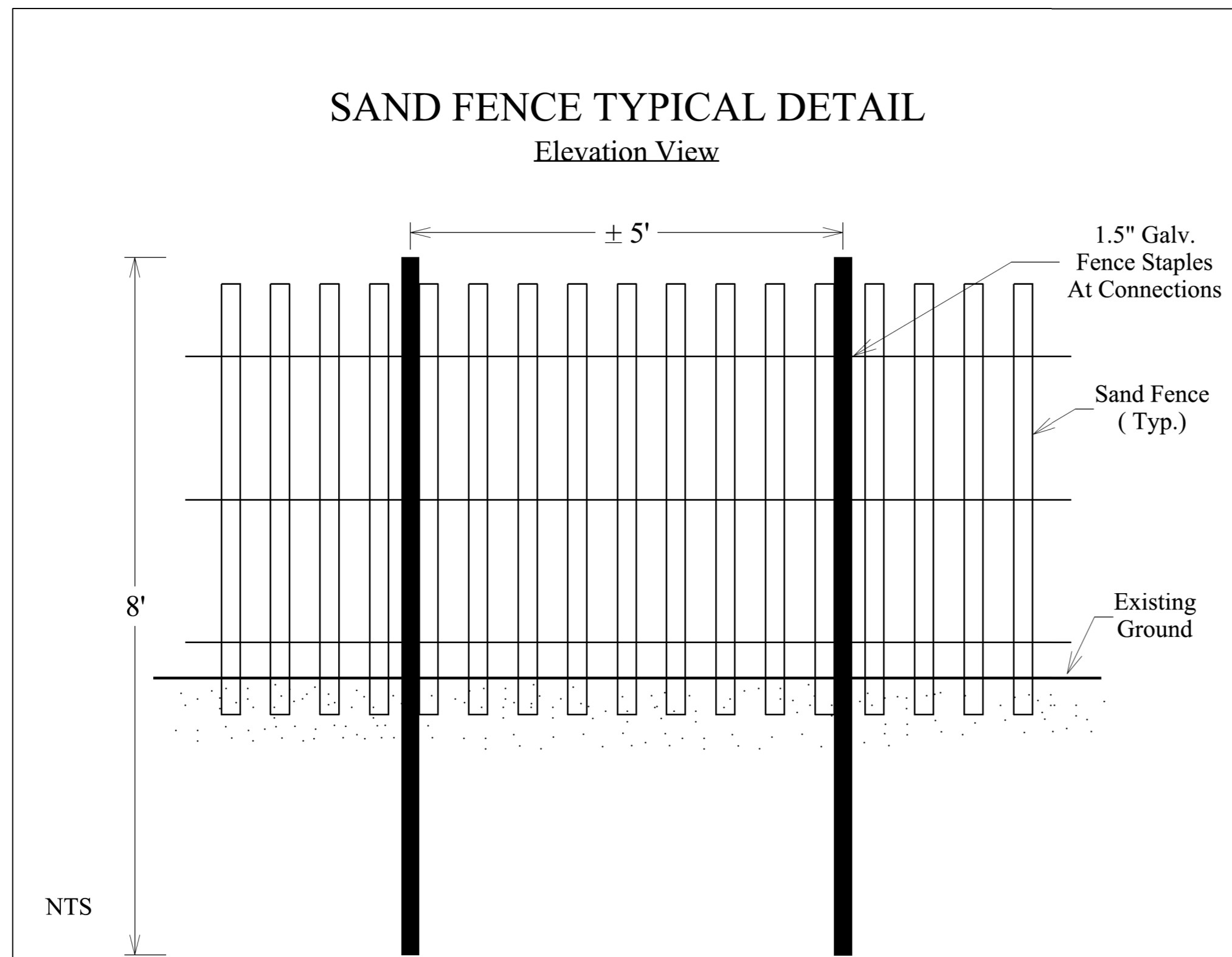
Prepared in the Office of:
DIVISION OF HIGHWAYS
113 Airport Dr., Edenton, NC 27932
2012 STANDARD SPECIFICATIONS

NTS

OCTOBER 6, 2015

07-OCT-2015 15:37
Users\stewart\stewart\Projects\14701028010\Kitty Hawk\Drawings\2-A.dwg
AT-DICAD285783

SAND FENCE DETAILS

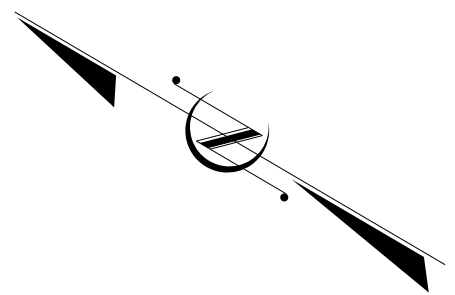


NTS

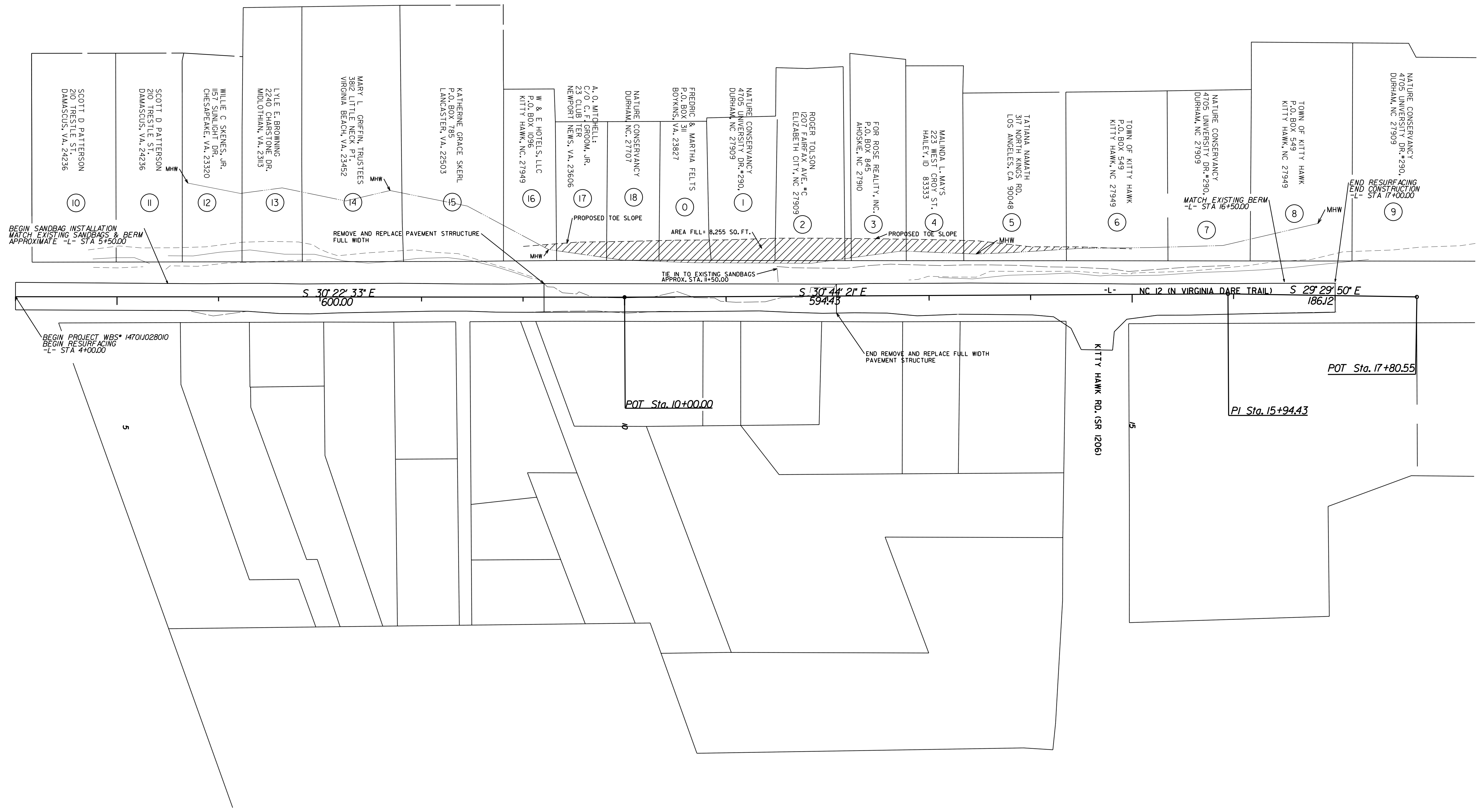
PROJECT NO.	SHEET NO.
14701.1028010	3

SUMMARY OF QUANTITIES

PROJECT	COUNTY	MAP	ROUTE	DESCRIPTION	TYP	LANES	LANE TYPE	FINAL SURFACE TESTING REQUIRED	WARM MIX ASPHALT REQUIRED	LENGTH	WIDTH	MOBILIZATION	GRADING	BORROW	TEMPORARY SHORING	GENERIC GRADING ITEM(NON-SAND DEBRIS REMOVAL)	BASE COURSE, B25.0B	SURFACE COURSE,S9.5B	ASPHALT BINDER FOR PLANT MIX	TEMPORARY TRAFFIC CONTROL	PAINT PVMT MARKINGS 4"	PAINT PVMT MARKINGS 8"	PAINT PVMT MARKINGS 24"	PAINT PVMT MARKING SYMBOL	GENERIC EROSION CONTROL ITEM (15' X 5' X 2' SAND BAGS FILLED IN PLACE)	GENERIC EROSION CONTROL ITEM (SAND FENCE)
NO		NO			NO					MI	FT	LS	LS	CY	SF	TONS	TONS	TONS	TONS	LS	LF	LF	LF	EA	EA	LF
14701.1028010	Dare	1	NC 12	FROM 4+00 TO 17+00	1, 2	2	2WU	NO	NO	0.246	28	1	1	6,850	4,880	800	325	375	36	1	5,850	70	24	2	375	1,000



ATLANTIC OCEAN



REVISIONS

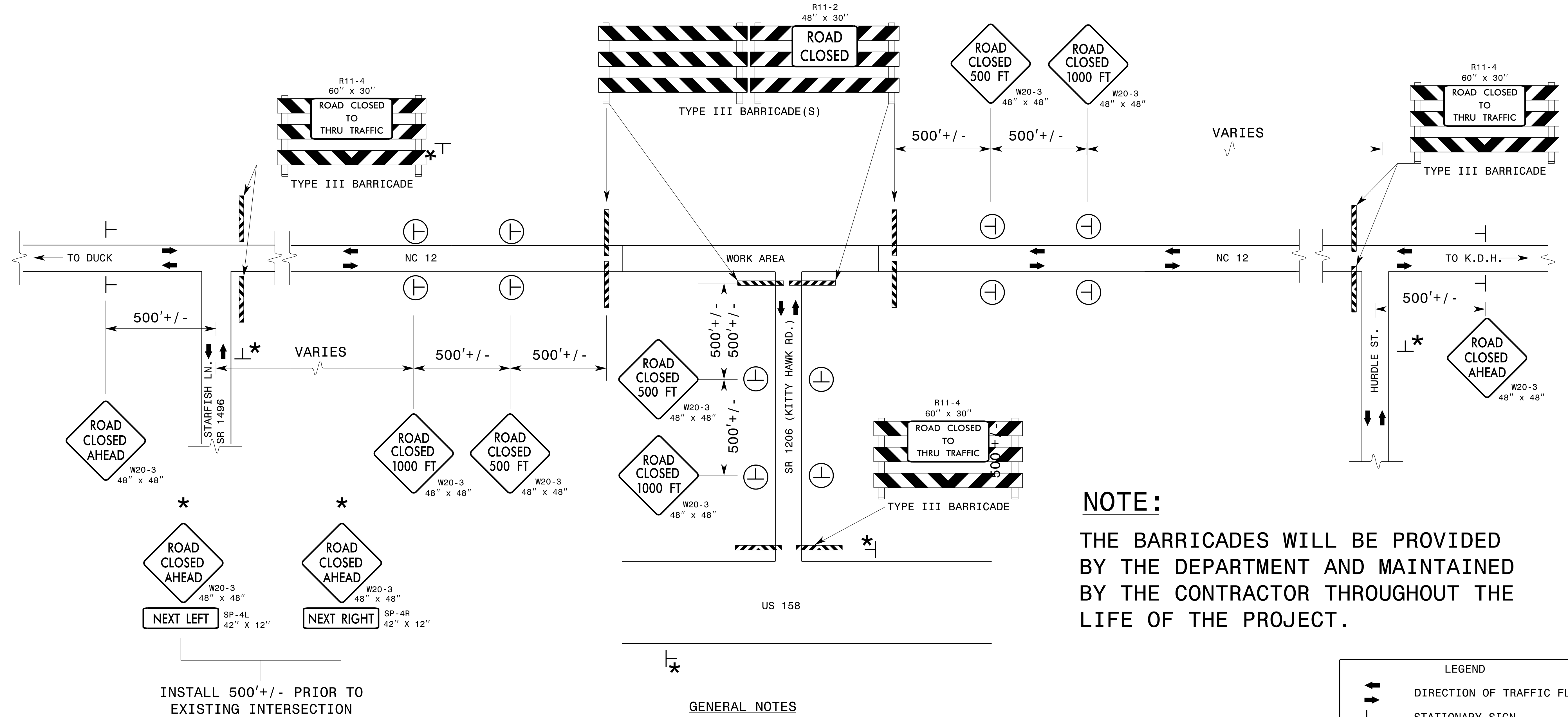
8/17/99

I:\5-OCT-2015\14701028010.dwg 15-OCT-2015 14:23
C:\Users\kh\Documents\14701028010.dwg 15-OCT-2015 14:23
14701028010.dwg 15-OCT-2015 14:23

TRAFFIC MANAGEMENT FOR TEMPORARY ROAD CLOSURE

WBS ELEMENT: 14701.1028010

CONTRACT #: DA00273



NOTE:

THE BARRICADES WILL BE PROVIDED BY THE DEPARTMENT AND MAINTAINED BY THE CONTRACTOR THROUGHOUT THE LIFE OF THE PROJECT.

INSTALL 500'+/- PRIOR TO EXISTING INTERSECTION

ROADWAY STANDARD DRAWINGS

THE FOLLOWING ROADWAY STANDARDS AS SHOWN IN "ROADWAY STANDARD DRAWINGS" - PROJECT SERVICES UNIT - N.C. DEPARTMENT OF TRANSPORTATION - RALEIGH N.C., ARE CONSIDERED A PART OF THE PLANS:

STD. NO.	TITLE
1101.03	TEMPORARY ROAD CLOSURES
1101.04	TEMPORARY SHOULDER CLOSURES
1110.01	STATIONARY WORK ZONE SIGNS
1110.02	PORTABLE WORK ZONE SIGNS
1135.01	CONES
1145.01	BARRICADES
904.10	ORIENTATION OF GROUND MOUNTED SIGNS

GENERAL NOTES

- INSTALLATION OF TEMPORARY ROUTE MARKERS, DESTINATION SIGNS AND ANY NECESSARY MODIFICATIONS TO EXISTING OR PROPOSED REGULATORY OR WARNING SIGNS WILL BE MADE BY OTHERS (STATE OR CITY FORCES) UNLESS OTHERWISE DESIGNATED IN PLANS. PROVIDE A MINIMUM 21 CALENDAR DAY NOTICE TO STATE FORCES BEFORE A ROADWAY IS CLOSED TO TRAFFIC SUCH THAT NECESSARY PROVISIONS CAN BE MADE TO INFORM LOCAL EMERGENCY AND LAW ENFORCEMENT PERSONNEL, SCHOOLS OR ANY OTHER PARTIES AFFECTED BY THE ROAD CLOSURE.
- INSTALL SIGNS BEFORE THE BARRICADES WHEN CLOSING THE ROADWAY TO TRAFFIC. REMOVE BARRICADES BEFORE SIGNS WHEN OPENING THE ROADWAY TO TRAFFIC. INSTALL/REMOVE SIGNS AND BARRICADES WITHIN THE SAME CALENDAR DAY.
- POSITION WING BARRICADES ON THE SHOULDERS AND SLOPE THE STRIPES DOWNWARD IN THE DIRECTION TOWARD WHICH TRAFFIC MUST TURN IN DETOURING.
- USE ADDITIONAL TYPE III BARRICADES IN STAGGERED LOCATIONS SUPPLEMENTED WITH SIGN R11-4 "ROAD CLOSED TO THRU TRAFFIC" IN THE EVENT THAT TRAFFIC MUST BE MAINTAINED BEYOND THE DETOUR POINT.
- SEE STANDARD SPECIFICATION 1089-1 FOR WORK ZONE SIGNS.
- SEE STANDARD SPECIFICATION 1089-2 FOR WORK ZONE SIGN SUPPORTS.

LEGEND	
	DIRECTION OF TRAFFIC FLOW
	STATIONARY SIGN
	TEMPORARY SIGN
	BARRICADE (TYPE III)

PROJECT: ISP.10281.18
DARE COUNTY

SANDBAGS, GRADING & RESURFACING
STATE OF NORTH CAROLINA
DEPARTMENT OF TRANSPORTATION
DIVISION ONE - DDC

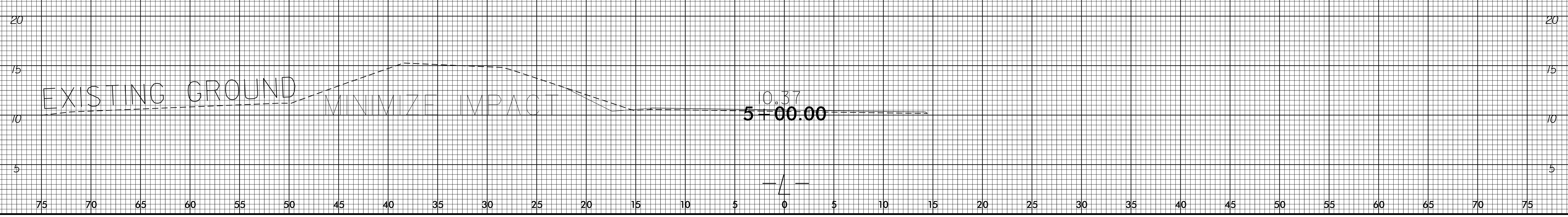
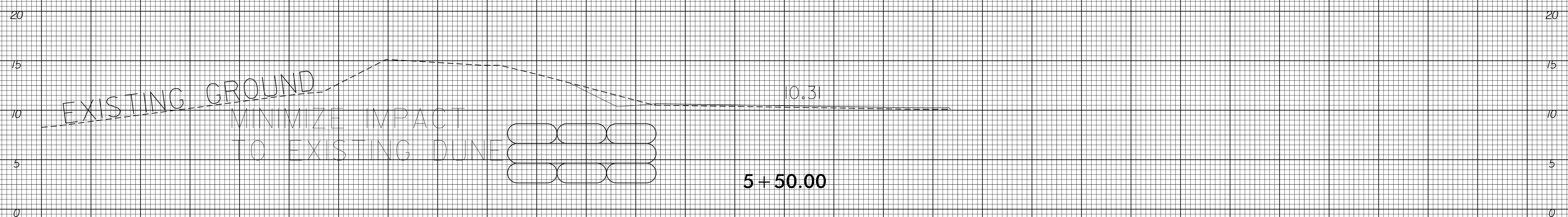
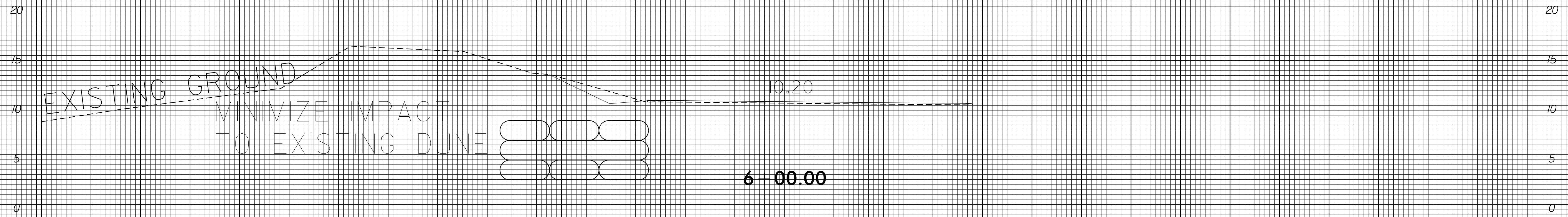
TRAFFIC MANAGEMENT PLAN

NOT TO SCALE
28' ROADWAY

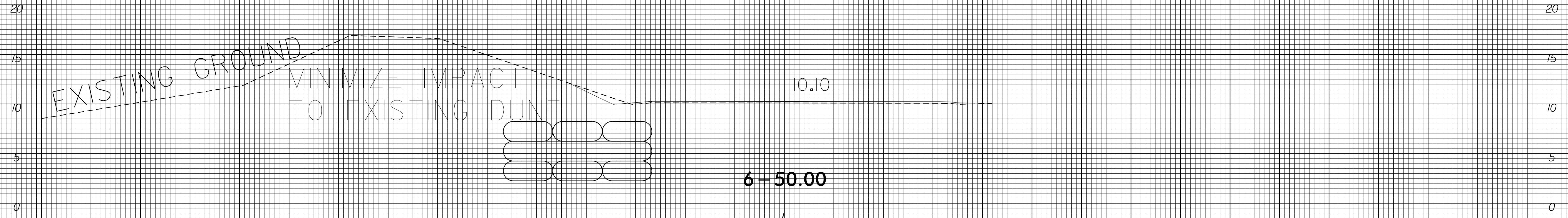
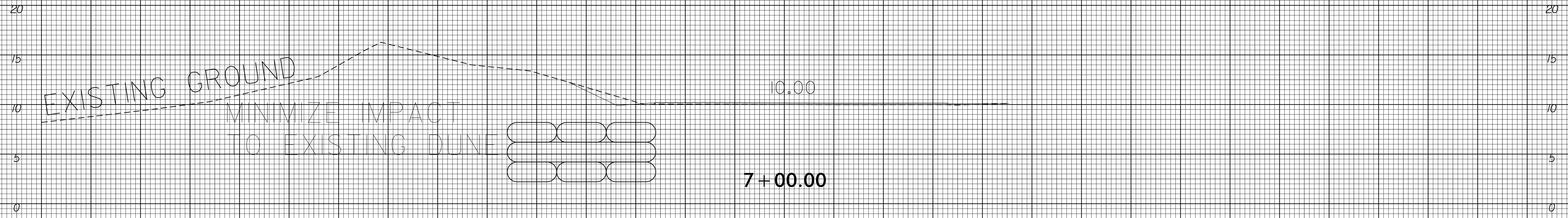
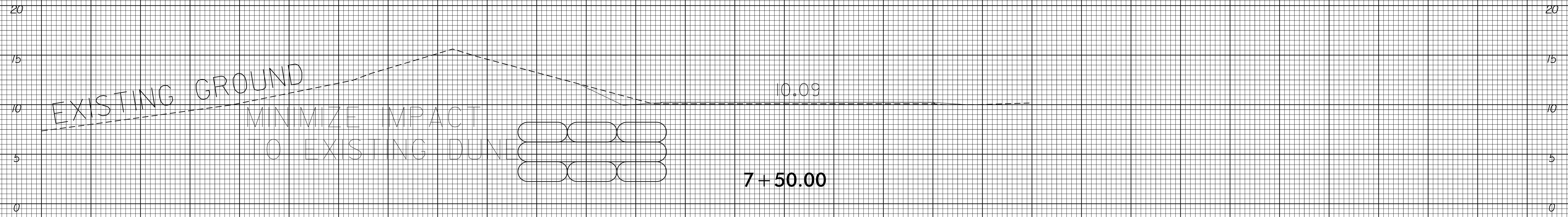
REVISIONS						SHEET NO.
NO.	BY:	DATE:	NO.	BY:	DATE:	5
1			1			
2			2			

DRAWN BY: SPF DATE: 10/7/15
CHECKED BY: DATE:

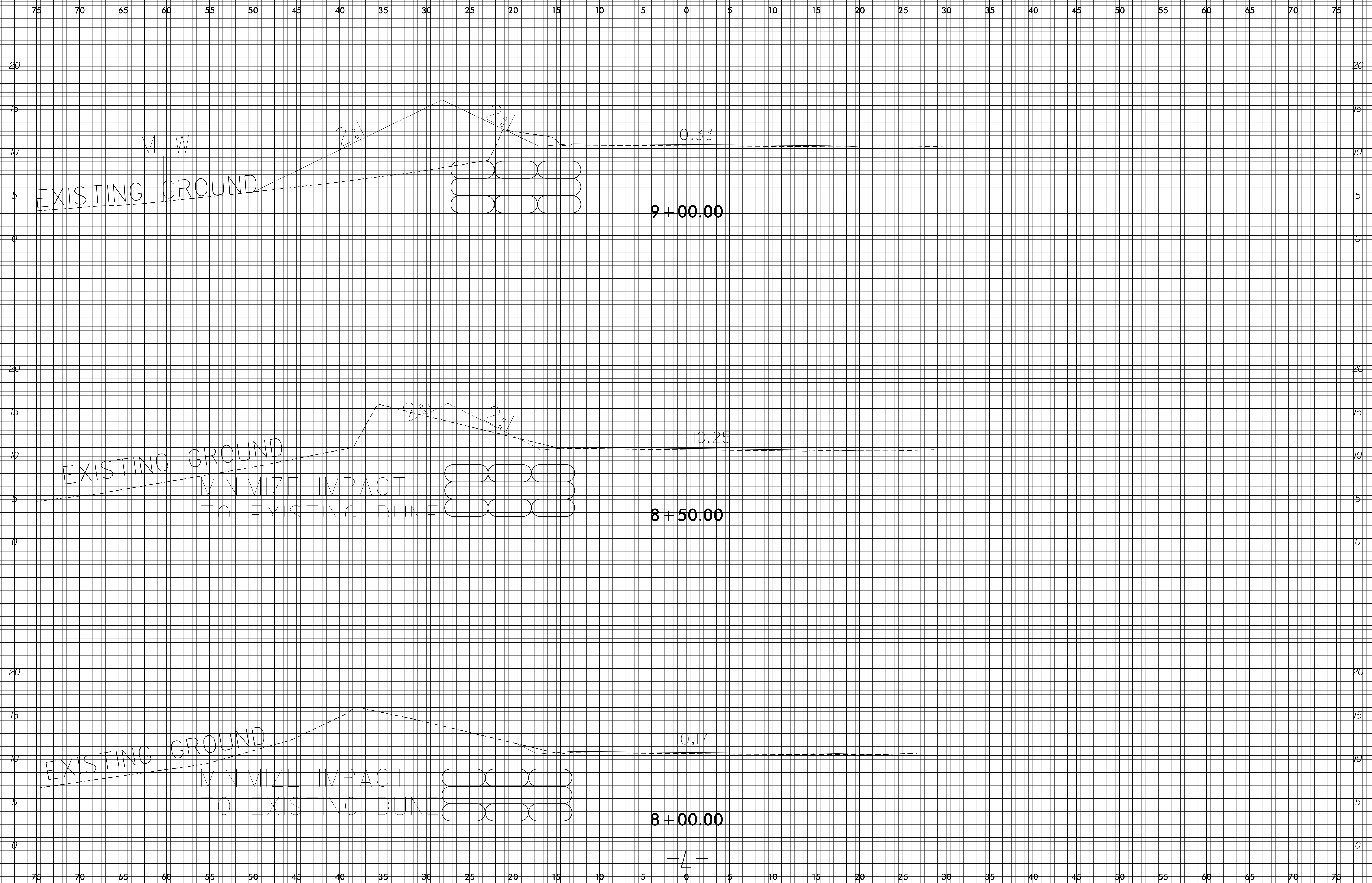
75 70 65 60 55 50 45 40 35 30 25 20 15 10 5 0 5 10 15 20 25 30 35 40 45 50 55 60 65 70 75



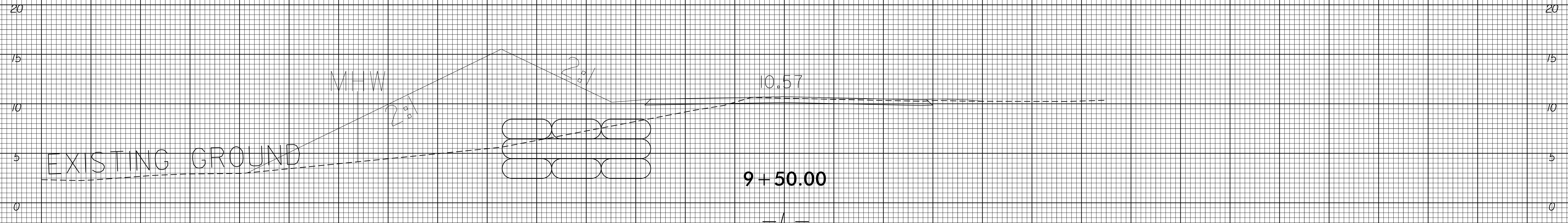
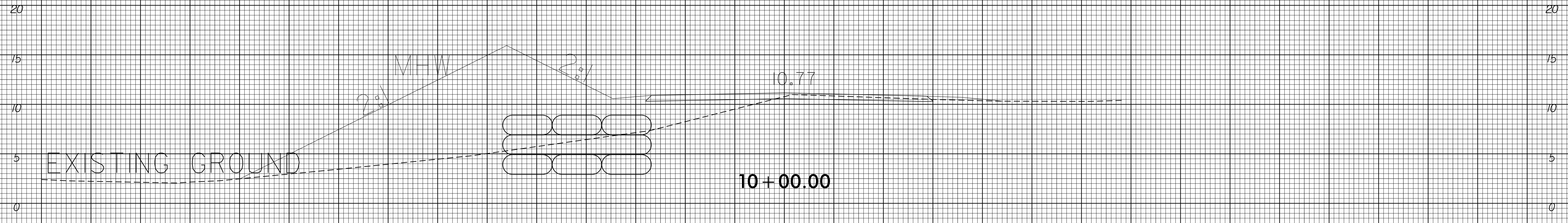
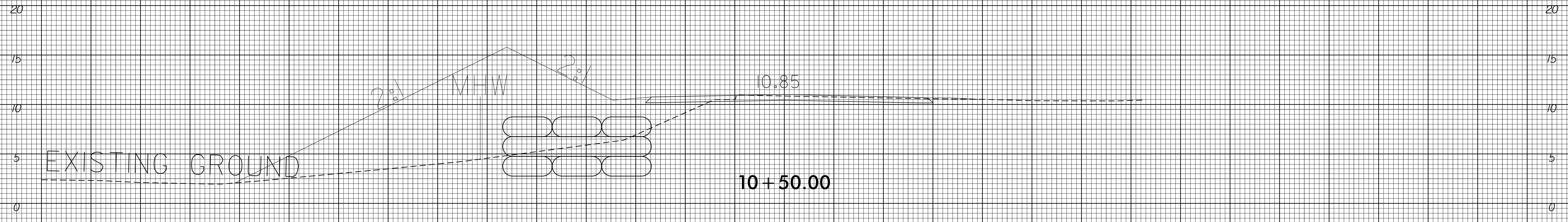
75 70 65 60 55 50 45 40 35 30 25 20 15 10 5 0 5 10 15 20 25 30 35 40 45 50 55 60 65 70 75



75 70 65 60 55 50 45 40 35 30 25 20 15 10 5 0 5 10 15 20 25 30 35 40 45 50 55 60 65 70 75



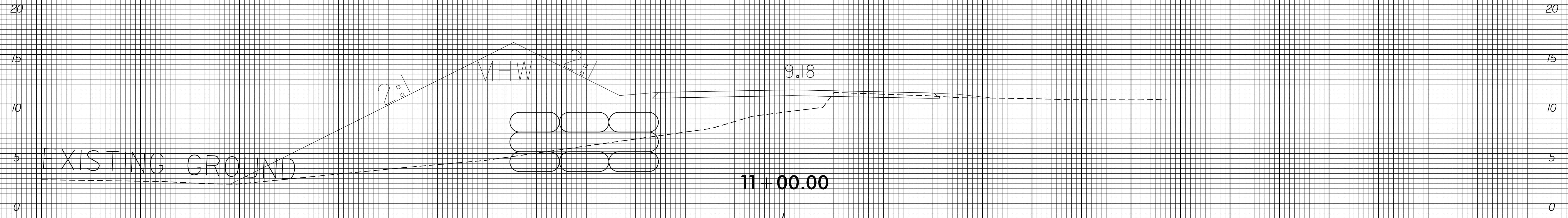
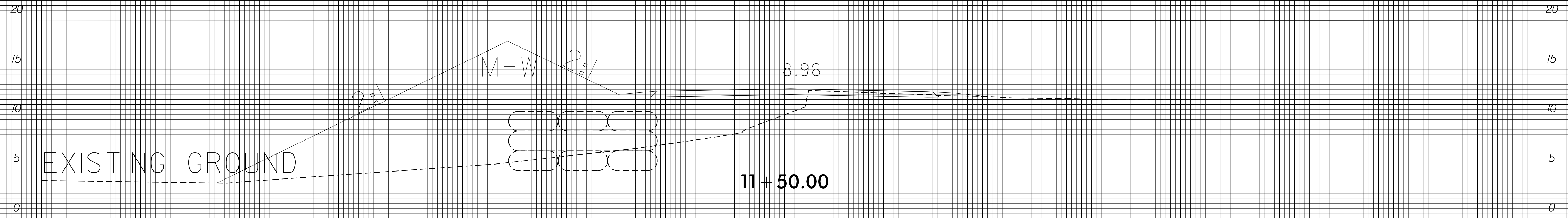
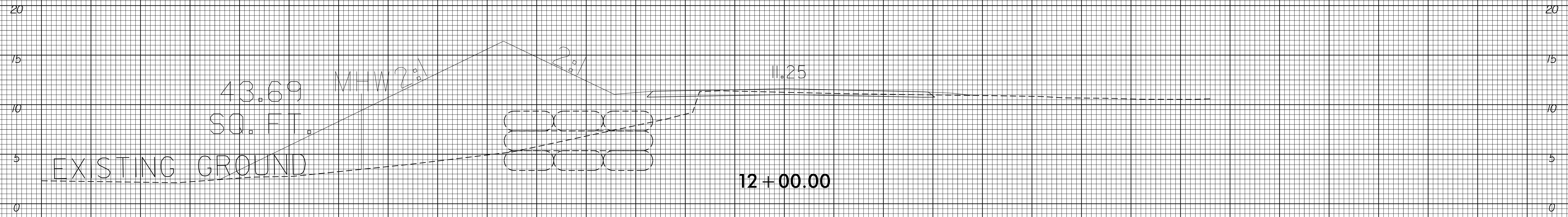
75 70 65 60 55 50 45 40 35 30 25 20 15 10 5 0 5 10 15 20 25 30 35 40 45 50 55 60 65 70 75



75 70 65 60 55 50 45 40 35 30 25 20 15 10 5 0 5 10 15 20 25 30 35 40 45 50 55 60 65 70 75

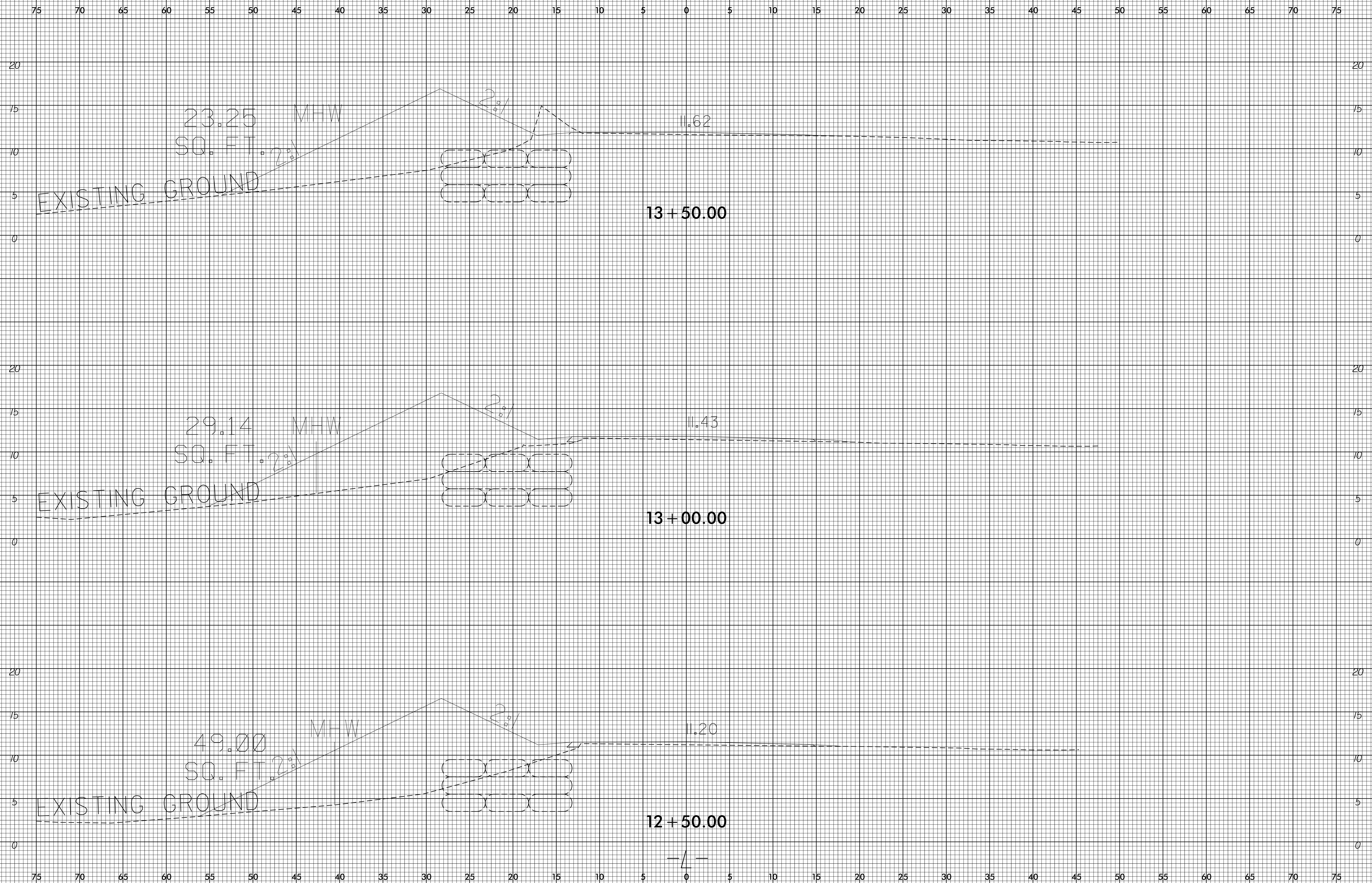
8/23/99

75 70 65 60 55 50 45 40 35 30 25 20 15 10 5 0 5 10 15 20 25 30 35 40 45 50 55 60 65 70 75

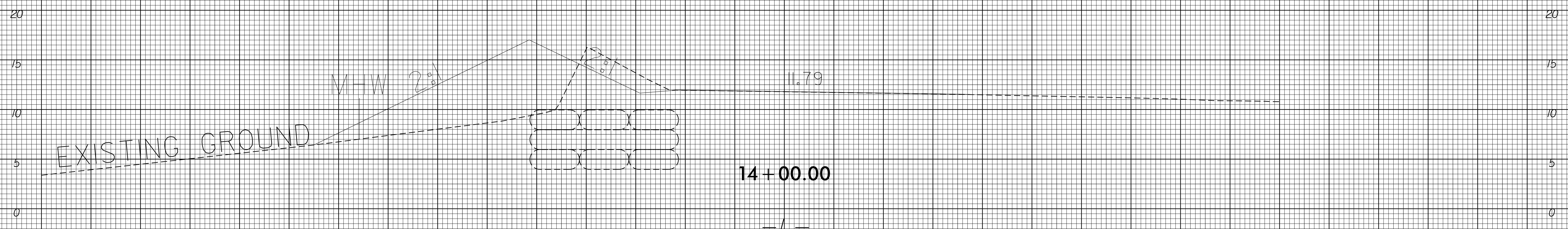
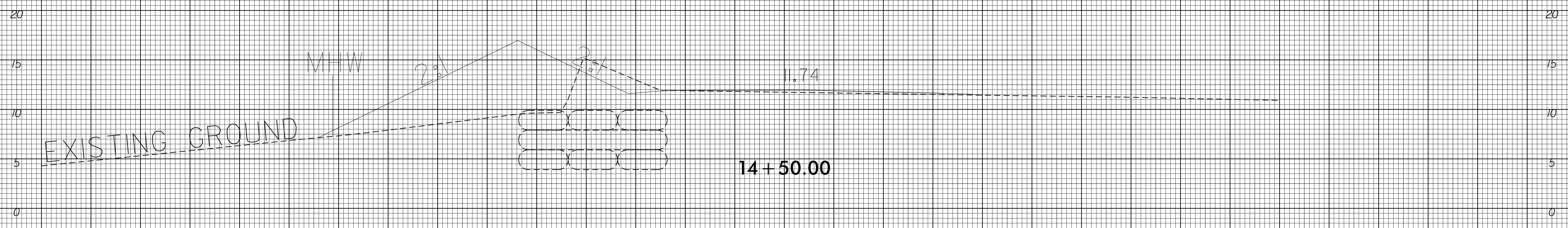
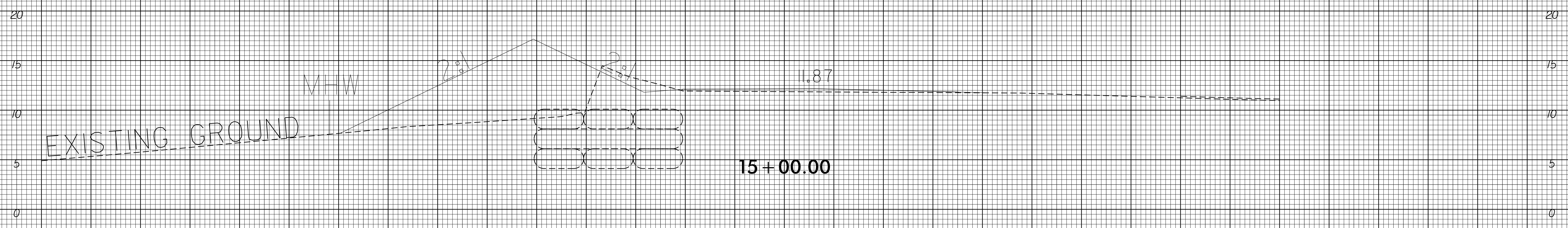


75 70 65 60 55 50 45 40 35 30 25 20 15 10 5 0 5 10 15 20 25 30 35 40 45 50 55 60 65 70 75

I5-OCT-2015 08:53
 C:\Users\sfenwick\Documents\Projects\14701.1028010_c01.10-07-15\14701.1028010_Rdy_xpl.dgn
 sfenwick

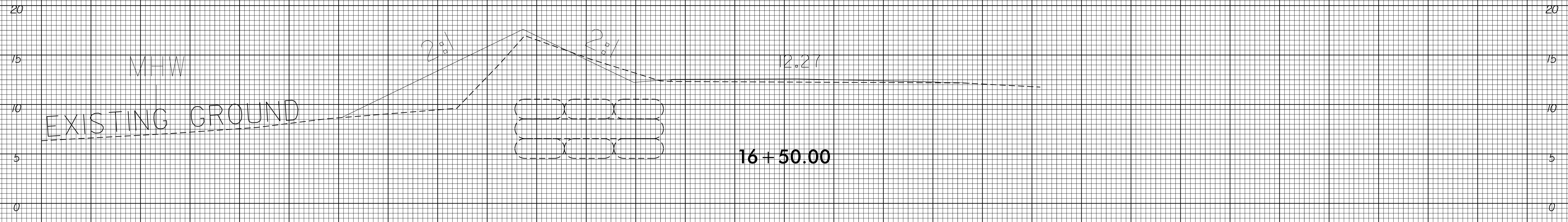


75 70 65 60 55 50 45 40 35 30 25 20 15 10 5 0 5 10 15 20 25 30 35 40 45 50 55 60 65 70 75

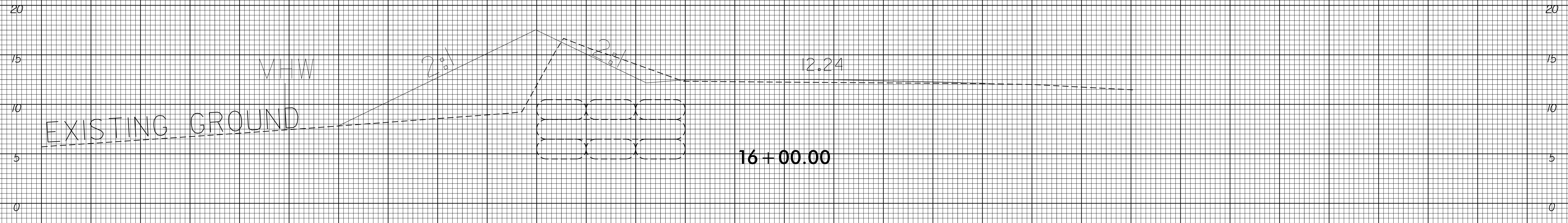


75 70 65 60 55 50 45 40 35 30 25 20 15 10 5 0 5 10 15 20 25 30 35 40 45 50 55 60 65 70 75

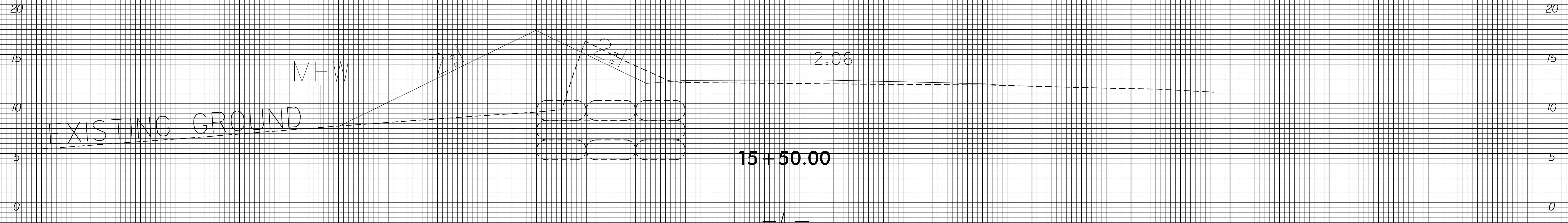
75 70 65 60 55 50 45 40 35 30 25 20 15 10 5 0 5 10 15 20 25 30 35 40 45 50 55 60 65 70 75



16 + 50.00

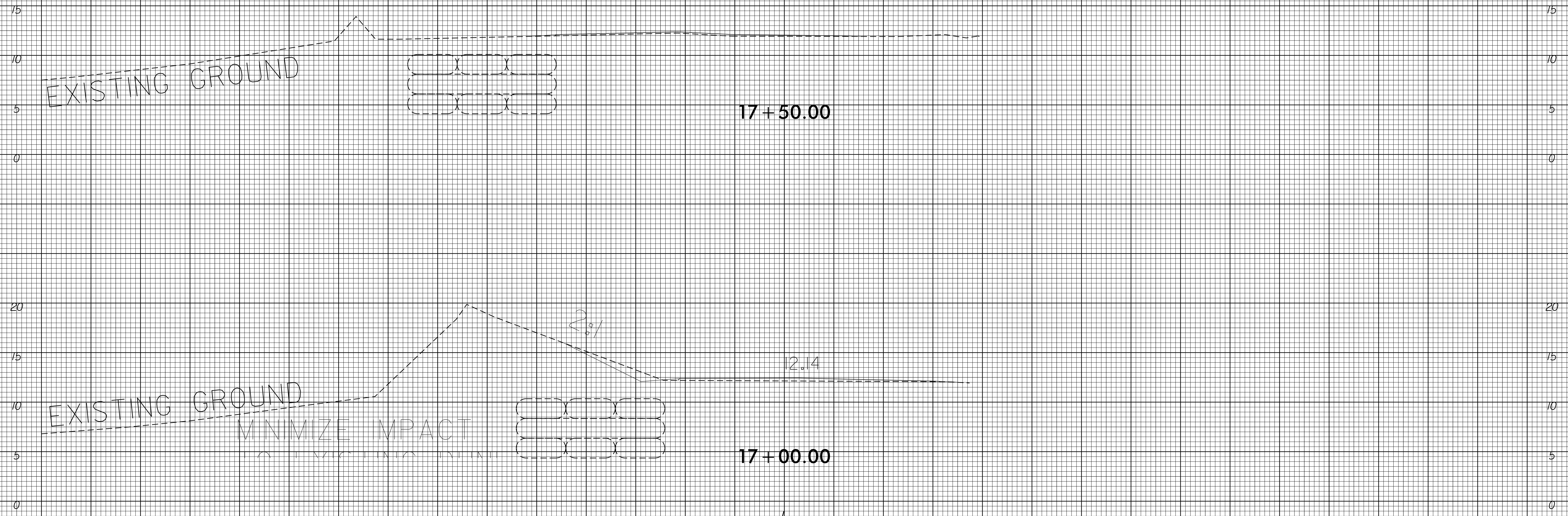


16 + 00.00



15 + 50.00

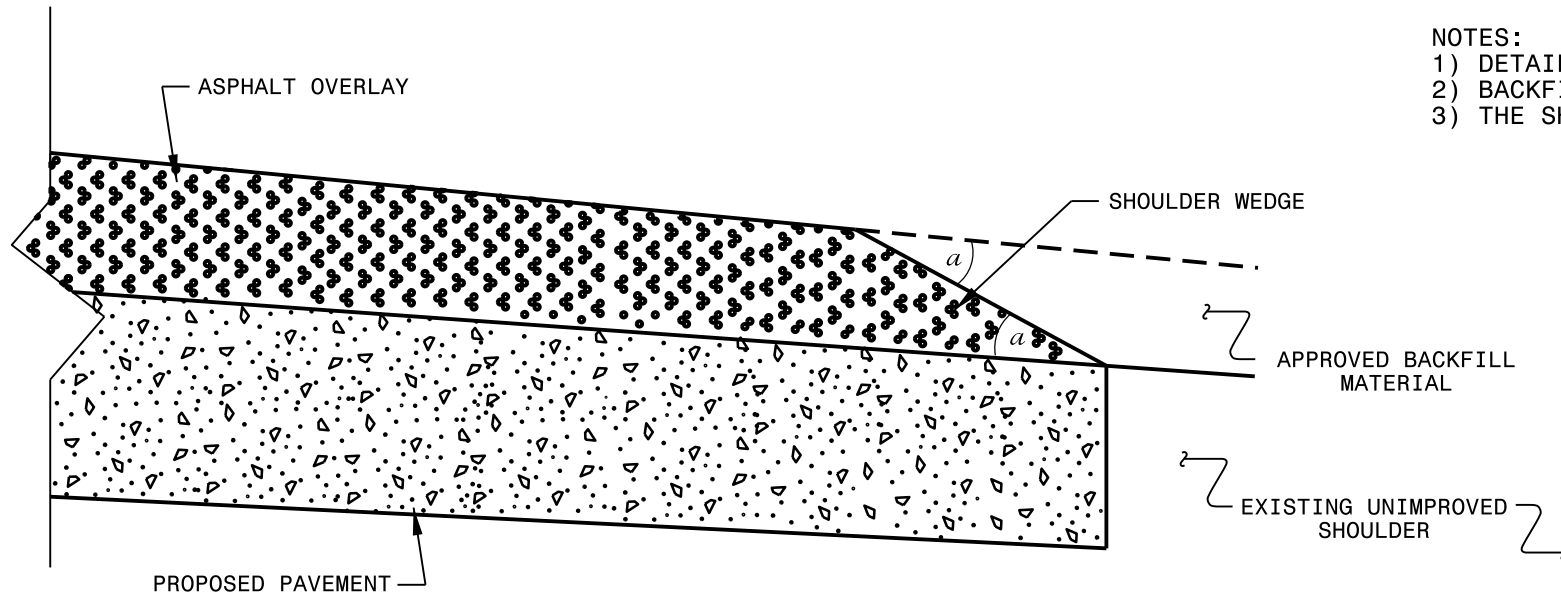
75 70 65 60 55 50 45 40 35 30 25 20 15 10 5 0 5 10 15 20 25 30 35 40 45 50 55 60 65 70 75



75 70 65 60 55 50 45 40 35 30 25 20 15 10 5 0 5 10 15 20 25 30 35 40 45 50 55 60 65 70 75

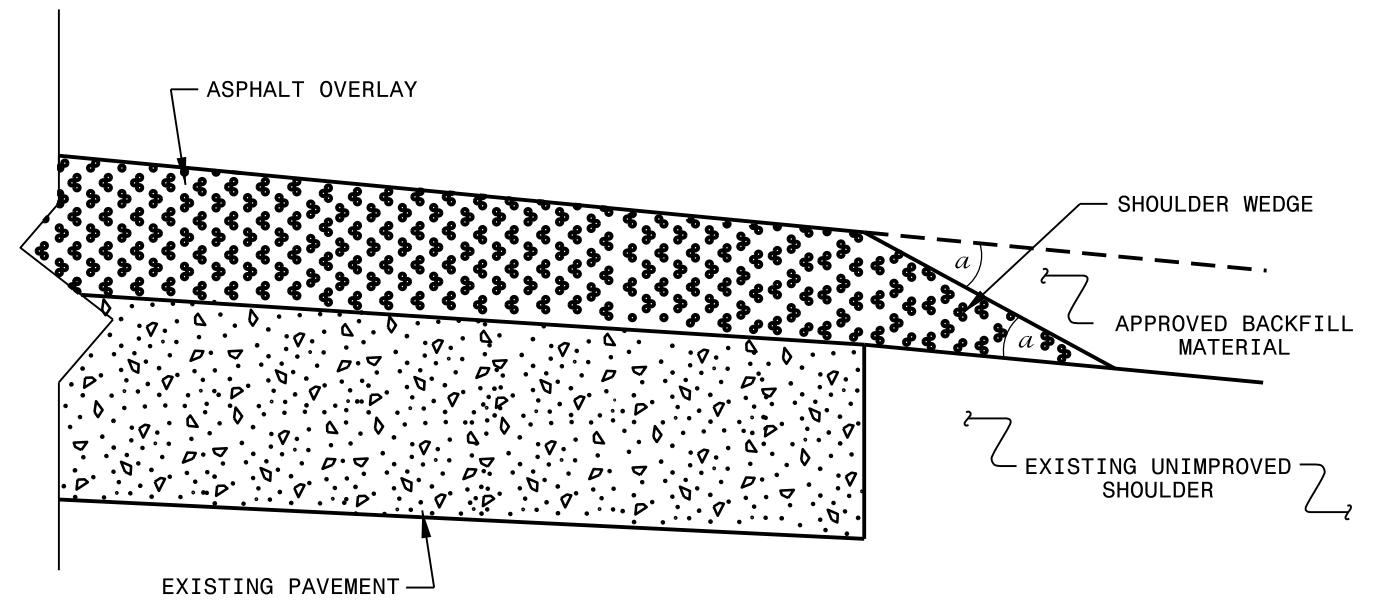
NOTES:

- 1) DETAIL DOES NOT APPLY TO OGAF C AND ULTRA-THIN BONDED WEARING COURSE.
- 2) BACKFILL SHOULDER WITH APPROVED MATERIAL.
- 3) THE SHOULDER WEDGE DEVICE MAY BE DISENGAGED AT PAVED DRIVEWAYS AND SIDE STREETS.



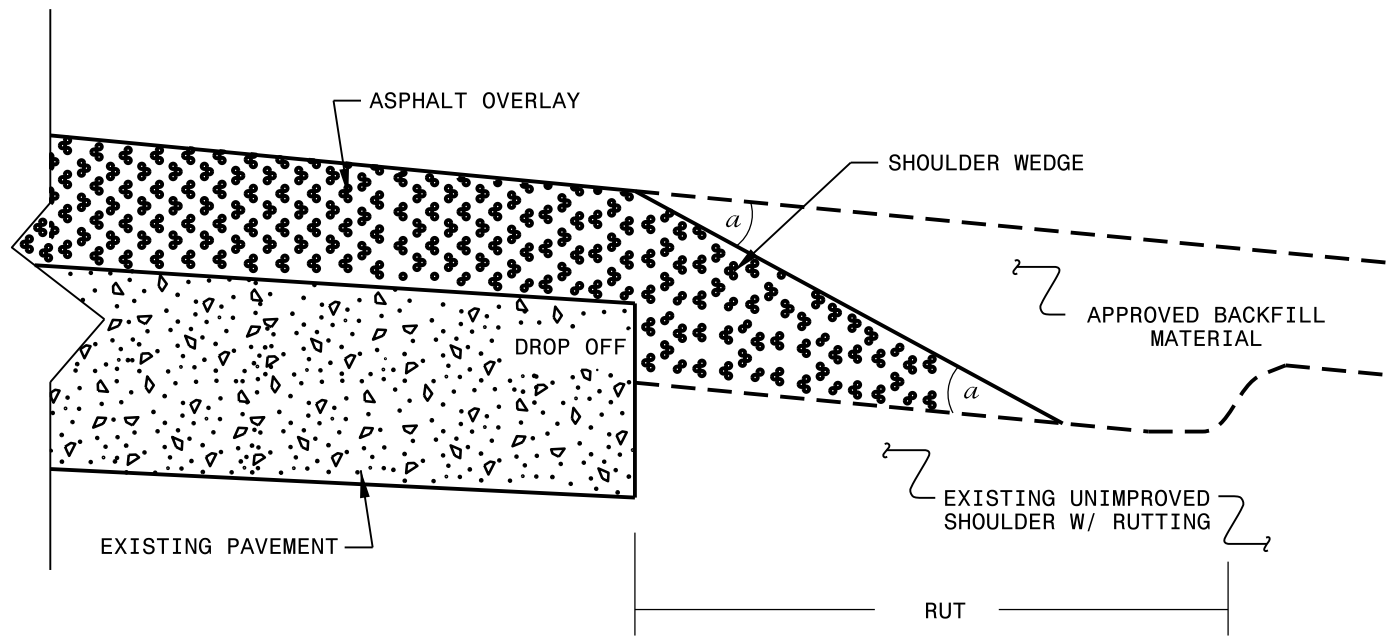
SHOULDER WEDGE DETAIL

(Resurfacing Projects w/ Widening or with Existing Paved Shoulder having no dropoffs)



SHOULDER WEDGE DETAIL

(Resurfacing Projects w/ NO Widening)



SHOULDER WEDGE DETAIL

(Resurfacing Adjacent to Rutted Shoulder)

- SHOULDER WEDGE ANGLE = 30°

CONTRACT STANDARDS AND DEVELOPMENT UNIT
Office 919-707-6950 FAX 919-250-4119

SHOULDER WEDGE DETAILS

ORIGINAL BY: T.SPELL DATE: 7-19-11
 MODIFIED BY: DATE: 10/16/12
 CHECKED BY: DATE:
 FILE SPEC.: s:\usr\details\stand\shoulderwedgedetail.dgn

09.FEB.2015 01:56 Q:\D:\B\C\2014\03176\Drawings\Maps\Shoulder detail\Revised Shoulder Wedge Detail.dgn .bstatum At DICAD270261