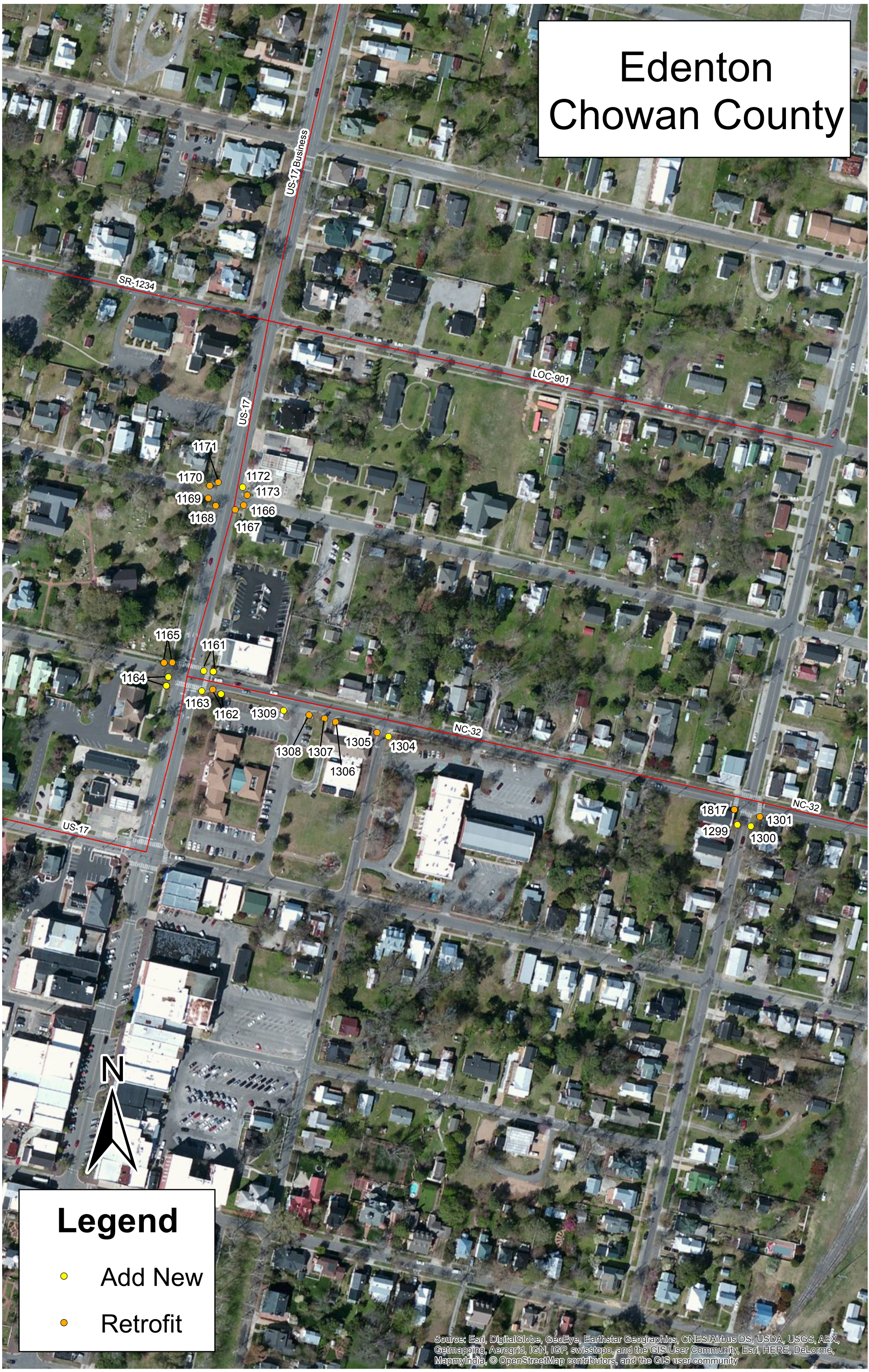


Edenton Chowan County



Legend

- Add New
- Retrofit

Source: Esri, DigitalGlobe, GeoEye, Earthstar Geographics, CNES/Airbus DS, USDA, USGS, AEX, Getmapping, Aerogrid, IGN, IGP, swisstopo, and the GIS User Community, Esri, HERE, DeLorme, MapmyIndia, © OpenStreetMap contributors, and the GIS user community

Elizabeth City Pasquotank County



Legend

- Add New
- Retrofit

Gatesville Gates County



Legend

- Add New
- Retrofit

Hertford Perquimans County



Legend

- Add New
- Retrofit

Division	County	Municipality	Under 5k Population? (Y/N)	Major Route	Minor Route	Number of New Ramps	New Ramp ID	Number of Retrofit Ramps	Retrofit Ramp ID
1	CHOWAN	EDENTON	Y	US-17 BUS	GALE ST	1	1172	7	1166, 1167, 1168, 1169, 1170, 1171, 1173
1	CHOWAN	EDENTON	Y	US-17 BUS & NC-32		6	1161 (2), 1162, 1163, 1164 (2)	3	1162, 1165 (2)
1	CHOWAN	EDENTON	Y	NC-32	COURT HOUSE	1	1309	3	1306, 1307, 1308
1	CHOWAN	EDENTON	Y	NC-32	COURT ST	1	1304	1	1305
1	CHOWAN	EDENTON	Y	NC-32	OAKUM ST	2	1299, 1300	2	1301, 1817
1	GATES	GATESVILLE	Y	US-158 BUS	SCHOOL	N/A		1	3330
1	GATES	GATESVILLE	Y	US-158 BUS	COMMUNITY CENTER	1	3329		
1	GATES	GATESVILLE	Y	NC-37	SMITH ST	2	66, 67	N/A	
1	GATES	GATESVILLE	Y	NC-37	ROBERTS ST	1	64	1	65
1	GATES	GATESVILLE	Y	NC-37 & NC-137		N/A		2	62, 63
1	GATES	GATESVILLE	Y	NC-37	DUCK THRU	N/A		1	60
1	PASQUOTANK	ELIZABETH CITY	N		SR-1164 & WATERFRONT	2	570, 571	N/A	
1	PASQUOTANK	ELIZABETH CITY	N		SR-1268 @ MUSEUM	3	568, 3303, 3304	N/A	
1	PASQUOTANK	ELIZABETH CITY	N		SR-1268 & SR-1164	4	562, 563, 564, 3295	2	565, 569
1	PASQUOTANK	ELIZABETH CITY	N		SR-1268 & CHURCH ST	1	561	1	560
1	PASQUOTANK	ELIZABETH CITY	N		SR-1268 & FEARING ST	2	556, 558	2	557, 559
1	PERQUIMANS	HERTFORD	Y	US-17 BUS	SR-1110	N/A		4	1408, 1409, 1410, 1411
1	PERQUIMANS	HERTFORD	Y		SR-1110 & SR-1125	N/A		2	1369, 1370
1	PERQUIMANS	HERTFORD	Y		SR-1110 & W ACADEMY ST	1	1393	1	1392
1	PERQUIMANS	HERTFORD	Y		SR-1110 & HISTORIC HERTFORD PARKING	1	3481	1	1394
1	PERQUIMANS	HERTFORD	Y		SR-1110 & E ACADEMY ST	2	1395, 1396	N/A	
1	PERQUIMANS	HERTFORD	Y		SR-1110 @ MISSING MILL PARK	1	1397	N/A	
1	PERQUIMANS	HERTFORD	Y		SR-1110 & COVENT GARDEN ST	2	1398, 1399	2	1400, 1401
1	PERQUIMANS	HERTFORD	Y		SR-1110 & PERQUIMANS ST	2	1402, 1403	N/A	
1	PERQUIMANS	HERTFORD	Y		SR-1110 & PUNCH ALLEY	2	1405, 1407	2	1404, 1406

PROJECT NO.	SHEET NO.	TOTAL NO.
44911.3.4, ETC.		

SUMMARY OF QUANTITIES

PROJECT NO	COUNTY	MAP NO	ROUTE	TYP NO	MOBILIZATION LS	AC PLANT MIX (REPAIR) TONS	2'-6" CURB & GUTTER LF	4" CONCRETE SIDEWALK SY	6" CONCRETE DRIVEWAY SY	CONCRETE CURB RAMPS EA	RETROFIT EXISTING CURB RAMPS EA	ADJ. OF METER OR VALVE BOX EA	TEMPORARY TRAFFIC CONTROL LS
44911.3.4	Chowan	1	US 17 BUSINESS	1	1	1	37	10		6	9		1
44911.3.4	Chowan	2	NC 32	1	1	1	57			5	6	1	1
44911.3.4	Gates	3	NC 37 AND US 158 BUS	1	2	2	10	10		4	5		1
44911.3.4	Perquimans	4	SR 1110 GRUBB ST	1	1	1	16	35	16	10	13		1
44911.3.5	Pasquotank	5	SR 1268 WATER ST/EHRINGHAUS ST	1	1	2	10	10		12	5		1
GRAND TOTAL					1	7	130	65	16	37	38	1	1