

09/08/99

**CONTRACT NO.: DA00204 WBS ELEMENT: ICR.20271.78, ETC.**

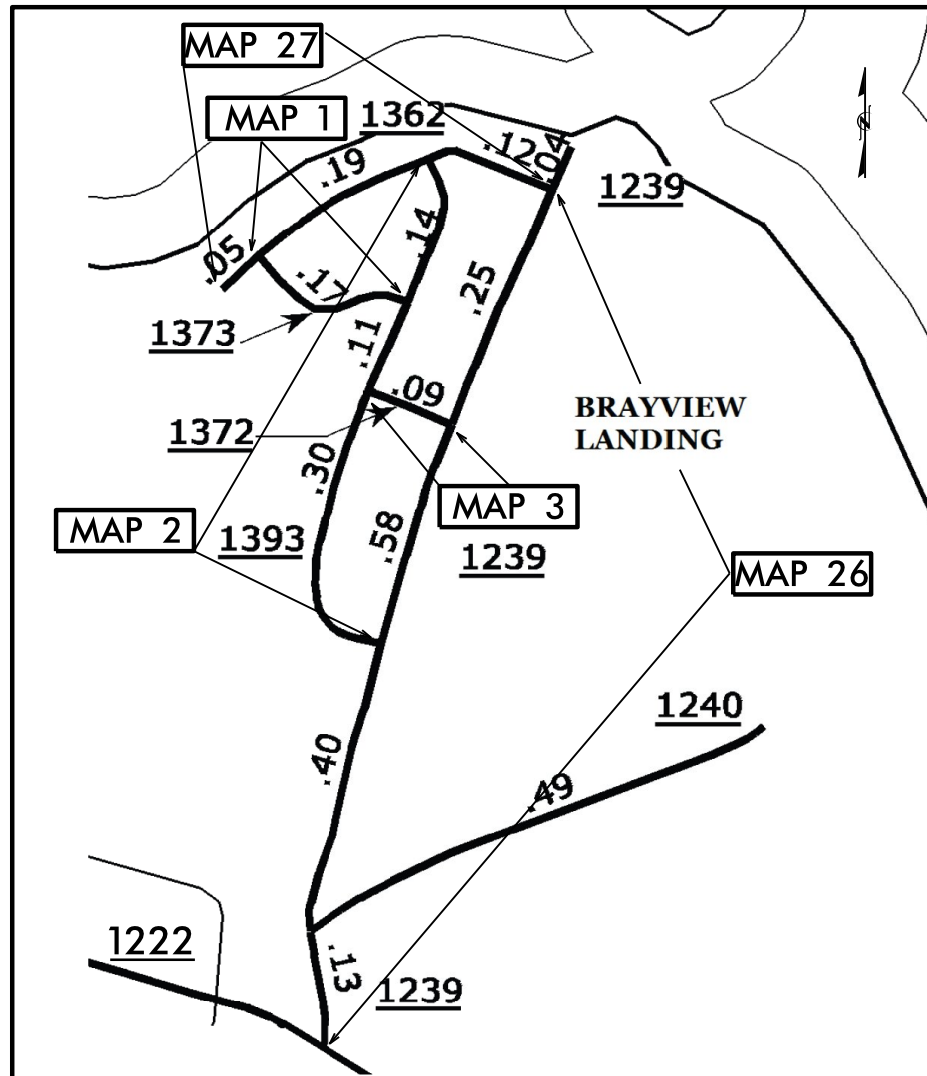
STATE OF NORTH CAROLINA  
DIVISION OF HIGHWAYS

**CURRITUCK COUNTY**

STATE	STATE PROJECT REFERENCE NO.	SHEET NO.
N.C.	ICR.20271.78, ETC	1
STATE PROJ. NO.	F.A. PROJ. NO.	DESCRIPTION
1CR.20271.100		MAP 1
1CR.20271.101		MAP 2
1CR.20271.102		MAP 3
1CR.20271.98		MAP 26
1CR.20271.99		MAP 27

**LOCATION: MAP 1 SR 1373 CAROLS CIR. FROM SR 1393 TO SR 1362**  
**MAP 2 SR 1393 BAYVIEW DR. FROM SR 1362 TO SR 1239**  
**MAP 3 SR 1372 YARNES ST. FROM SR 1239 TO SR 1393**  
**MAP 26 SR 1239 LAUNCH LANDING RD. FROM SR 1222 TO SR 1362**  
**MAP 27 SR 1362 WATERS DR. FROM SR 1239 TO DEAD END**

**TYPE OF WORK: RESURFACING**



**NTS**

PROJECT LENGTH	
LENGTH OF ROADWAY PROJECT MAP 1	= 0.17 MI.
LENGTH OF ROADWAY PROJECT MAP 2	= 0.53 MI.
LENGTH OF ROADWAY PROJECT MAP 3	= 0.09 MI.
LENGTH OF ROADWAY PROJECT MAP 26	= 0.88 MI.
LENGTH OF ROADWAY PROJECT MAP 27	= 0.37 MI.

Prepared in the Office of:  
**DIVISION OF HIGHWAYS**  
 113 Airport Dr., Edenton NC, 27932

---

2012 STANDARD SPECIFICATIONS

LETTING DATE: \_\_\_\_\_

\_\_\_\_\_  
 W. B. HOBBS, P.E.  
 DIVISION PROJECT MANAGER

\_\_\_\_\_  
 C. E. SLACHTA  
 DIVISION PROPOSALS ENGINEER

**DIVISION OF HIGHWAYS**  
**STATE OF NORTH CAROLINA**

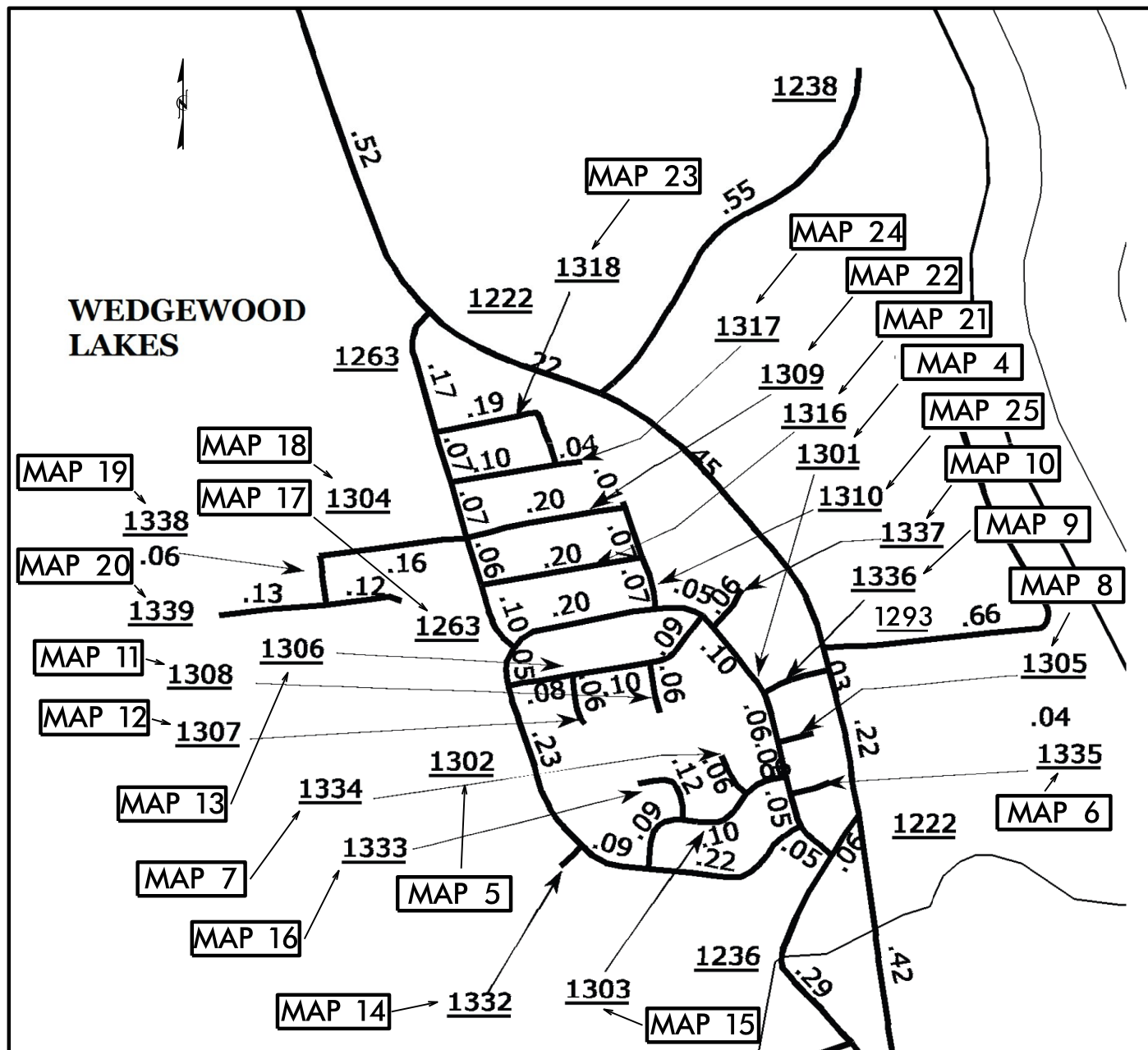
**CONTRACT NO.: DA00204 WBS ELEMENT: ICR.20271.78, ETC.**

**NTS**

STATE OF NORTH CAROLINA  
DIVISION OF HIGHWAYS

**CURRITUCK COUNTY**

STATE	STATE PROJECT REFERENCE NO.	SHEET NO.	
N.C.	ICR.20271.78, ETC	2	
STATE PROJ. NO.	F.A. PROJ. NO.	DESCRIPTION	
1CR.20271.78		MAP 4	
1CR.20271.79		MAP 5	
1CR.20271.80		MAP 6	
1CR.20271.81		MAP 7	
1CR.20271.82		MAP 8	
1CR.20271.83		MAP 9	
1CR.20271.84		MAP 10	
1CR.20271.85		MAP 11	
1CR.20271.85		MAP 12	
1CR.20271.85		MAP 13	
1CR.20271.86		MAP 14	
1CR.20271.87		MAP 15	
1CR.20271.88		MAP 16	
1CR.20271.89		MAP 17	
1CR.20271.90		MAP 18	
1CR.20271.91		MAP 19	
1CR.20271.92		MAP 20	
1CR.20271.93		MAP 21	
1CR.20271.94		MAP 22	
1CR.20271.95		MAP 23	
1CR.20271.96		MAP 24	
1CR.20271.97		MAP 25	



**TYPE OF WORK: RESURFACING**

**LOCATION:**

- MAP 4 SR 1301 WEDGEWOOD DR. FROM SR 1236 TO SR 1263
- MAP 5 SR 1302 WEDGEWOOD DR. FROM SR 1301 TO SR 1301
- MAP 6 SR 1335 ASH CIR. FROM SR 1301 TO CUL-DE-SAC
- MAP 7 SR 1334 CYPRESS CIR. FROM SR 1303 TO CUL-DE-SAC
- MAP 8 SR 1305 MAPLE CIR. FROM SR 1301 TO CUL-DE-SAC
- MAP 9 SR 1336 WEDEWOOD BLVD. FROM SR 1222 TO SR 1301
- MAP 10 SR 1337 ELM CIR. FROM SR 1301 TO CUL-DE-SAC
- MAP 11 SR 1308 JUNIPER CIR. FROM SR 1306 TO CUL-DE-SAC
- MAP 12 SR 1307 POPLAR CIR. FROM SR 1306 TO CUL-DE-SAC
- MAP 13 SR 1306 WILLOW DR. FROM SR 1302 TO SR 1301
- MAP 14 SR 1332 CEDAR CIR. FROM SR 1302 TO CUL-DE-SAC
- MAP 15 SR 1303 SYCAMORE DR. FROM SR 1302 TO SR 1301
- MAP 16 SR 1333 BEECH CIR. FROM SR 1303 TO CUL-DE-SAC
- MAP 17 SR 1263 WALKER DR. FROM SR 1222 TO SR 1301
- MAP 18 SR 1304 ROBERT WALKER RD. FROM SR 1263 TO SR 1338
- MAP 19 SR 1338 TUPELO ST. FROM SR 1304 TO SR 1339
- MAP 20 SR 1339 REDWOOD ST. FROM CUL-DE-SAC TO CUL-DE-SAC
- MAP 21 SR 1316 WHITE OAK DR. FROM SR 1263 TO SR 1310
- MAP 22 SR 1309 DOGWOOD DR. FROM SR 1263 TO SR 1310
- MAP 23 SR 1318 HOLLY DR. FROM SR 1263 TO SR 1317
- MAP 24 SR 1317 HALSTEAD DR. FROM SR 1263 TO DEAD END
- MAP 25 SR 1310 MYRTLE DR. FROM SR 1301 TO CUL-DE-SAC

**PROJECT LENGTH**

LENGTH OF ROADWAY PROJECT MAP 4 = 0.61 MI.	LENGTH OF ROADWAY PROJECT MAP 15 = 0.25 MI.
LENGTH OF ROADWAY PROJECT MAP 5 = 0.60 MI.	LENGTH OF ROADWAY PROJECT MAP 16 = 0.11 MI.
LENGTH OF ROADWAY PROJECT MAP 6 = 0.05 MI.	LENGTH OF ROADWAY PROJECT MAP 17 = 0.45 MI.
LENGTH OF ROADWAY PROJECT MAP 7 = 0.06 MI.	LENGTH OF ROADWAY PROJECT MAP 18 = 0.20 MI.
LENGTH OF ROADWAY PROJECT MAP 8 = 0.05 MI.	LENGTH OF ROADWAY PROJECT MAP 19 = 0.06 MI.
LENGTH OF ROADWAY PROJECT MAP 9 = 0.08 MI.	LENGTH OF ROADWAY PROJECT MAP 20 = 0.24 MI.
LENGTH OF ROADWAY PROJECT MAP 10 = 0.06 MI.	LENGTH OF ROADWAY PROJECT MAP 21 = 0.21 MI.
LENGTH OF ROADWAY PROJECT MAP 11 = 0.06 MI.	LENGTH OF ROADWAY PROJECT MAP 22 = 0.21 MI.
LENGTH OF ROADWAY PROJECT MAP 12 = 0.07 MI.	LENGTH OF ROADWAY PROJECT MAP 23 = 0.20 MI.
LENGTH OF ROADWAY PROJECT MAP 13 = 0.27 MI.	LENGTH OF ROADWAY PROJECT MAP 24 = 0.16 MI.
LENGTH OF ROADWAY PROJECT MAP 14 = 0.03 MI.	LENGTH OF ROADWAY PROJECT MAP 25 = 0.16 MI.

Prepared in the Office of:  
**DIVISION OF HIGHWAYS**  
113 Airport Dr., Edenton NC, 27932

---

2012 STANDARD SPECIFICATIONS

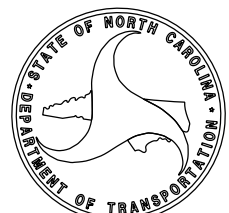
**LETTING DATE:** \_\_\_\_\_

**W.B. HOBBS, P.E.**  
DIVISION PROJECT MANAGER

---

**C.E. SLACHTA**  
DIVISION PROPOSALS ENGINEER

**DIVISION OF HIGHWAYS**  
STATE OF NORTH CAROLINA



# C O N T R A C T P A V E M E N T S C H E D U L E

C1	PROP. APPROX. 1½" ASPHALT CONCRETE SURFACE COURSE, TYPE SF9.5A, AT AN AVERAGE RATE OF 165 LBS. PER SQ. YD.
C2	PROP. APPROX. 2" ASPHALT CONCRETE SURFACE COURSE, TYPE SF9.5A, AT AN AVERAGE RATE OF 220 LBS. PER SQ. YD.
T	EXISTING GRASS MEDIAN
U	EXISTING PAVEMENT

PAVEMENT SCHEDULE

C1	PROP. APPROX. 1½" ASPHALT CONCRETE SURFACE COURSE, TYPE SF9.5A, AT AN AVERAGE RATE OF 165 LBS. PER SQ. YD.
U	EXISTING PAVEMENT

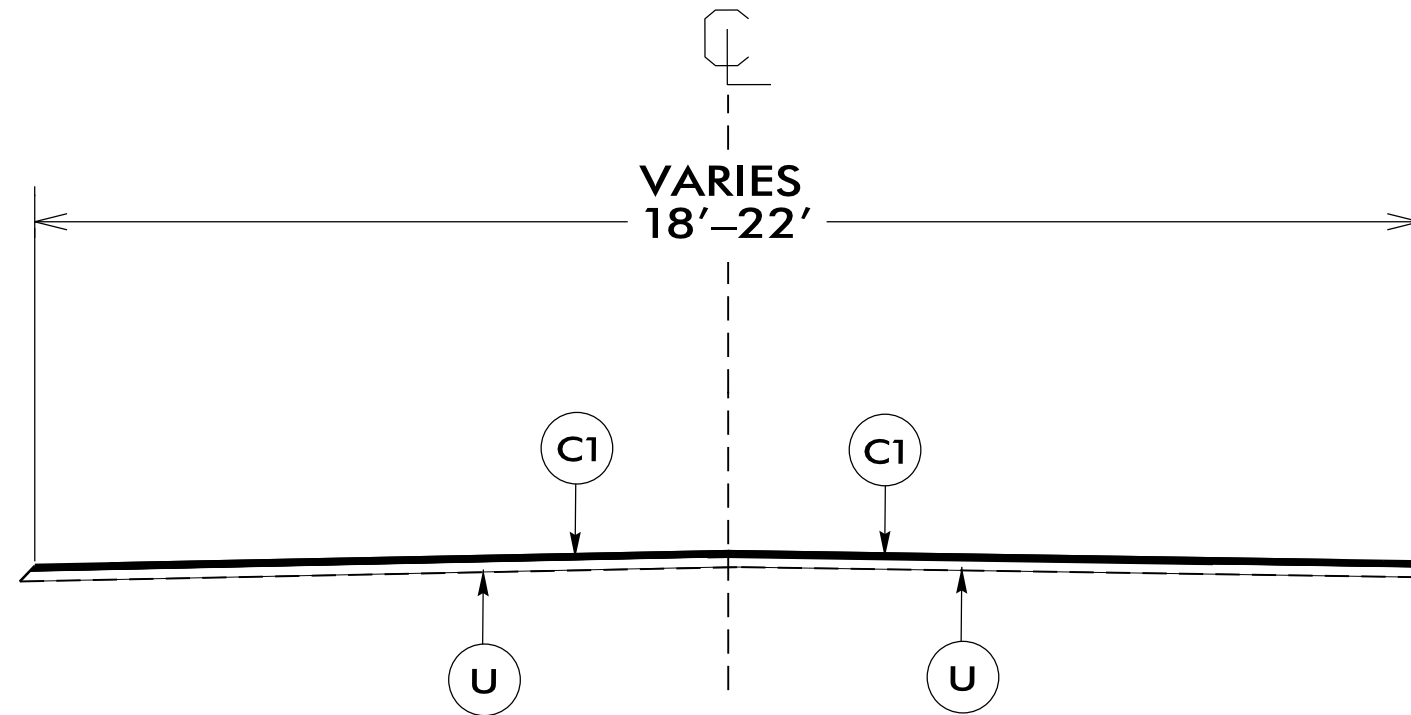
PROJECT REFERENCE NO.	SHEET NO.
1CR.20271.78, ETC.	4

NOTES:

\*ALL PAVED S.R. ROADS TO BE RESURFACED TO THE ENDS OF THE RADII, OR AS DIRECTED BY THE ENGINEER

\*EDGES, PAVEMENT WIDENING, INTERSECTIONS, AND BRIDGE FLARES ARE INCLUDED IN THE TABLE OF QUANTITIES

\*SHOULDERS TO BE RECONSTRUCTED BY OTHERS



**TYPICAL SECTION NO.1**

USE WITH MAPS 1-3, 7, 11,12, 14-16, 18, 23, 26, 27

NTS

P A V E M E N T   S C H E D U L E

C2	PROP. APPROX. 2" ASPHALT CONCRETE SURFACE COURSE, TYPE SF9.5A, AT AN AVERAGE RATE OF 220 LBS. PER SQ. YD.
U	EXISTING PAVEMENT.

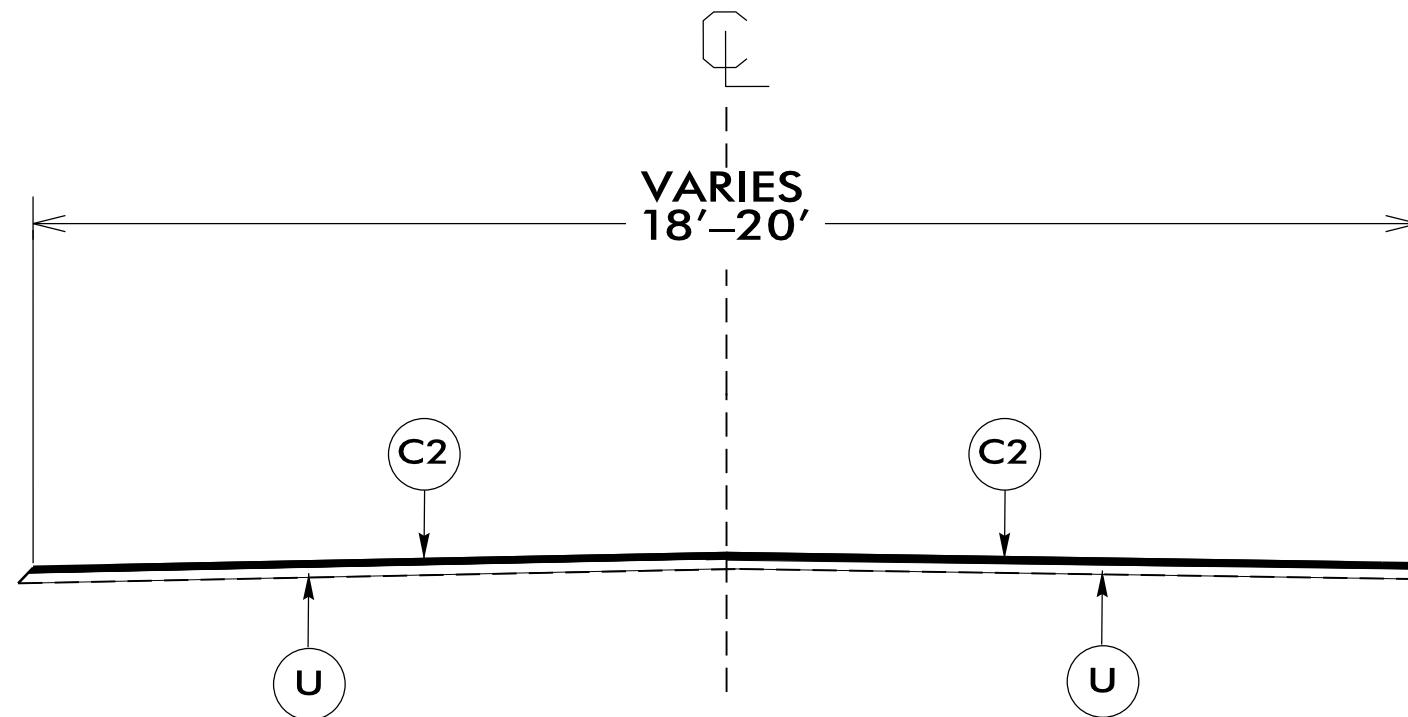
PROJECT REFERENCE NO.	SHEET NO.
1CR.20271.78, ETC.	5

NOTES:

\*ALL PAVED S.R. ROADS TO BE RESURFACED TO THE ENDS OF THE RADII,  
OR AS DIRECTED BY THE ENGINEER

\*EDGES, PAVEMENT WIDENING, INTERSECTIONS, AND BRIDGE FLARES ARE  
INCLUDED IN THE TABLE OF QUANTITIES

\*SHOULDERS TO BE RECONSTRUCTED BY OTHERS



**TYPICAL SECTION NO.2**

USE WITH MAP 4-6, 8, 10, 13, 17, 19-22, 24, 25

NTS

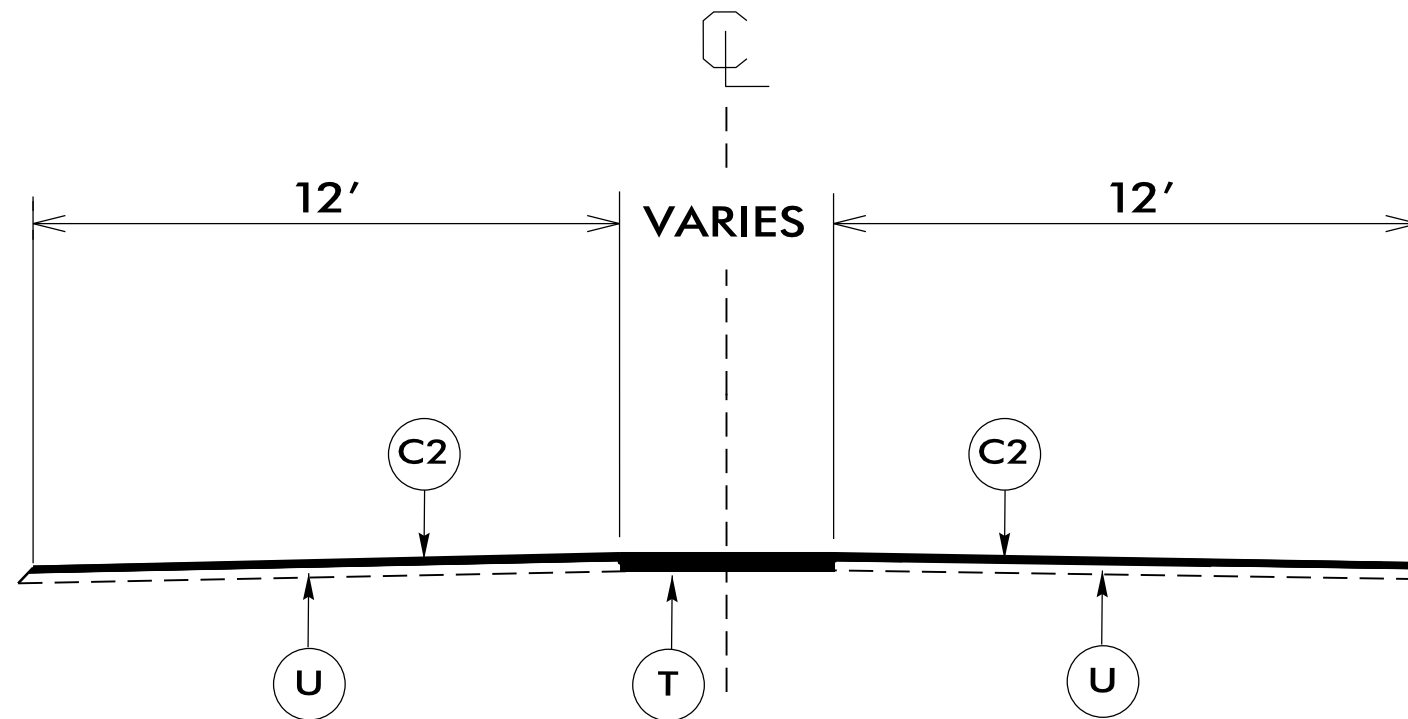
P A V E M E N T S C H E D U L E

C2	PROP. APPROX. 2" ASPHALT CONCRETE SURFACE COURSE, TYPE SF9.5A, AT AN AVERAGE RATE OF 220 LBS. PER SQ. YD.
T	EXISTING GRASS MEDIAN.
U	EXISTING PAVEMENT.

PROJECT REFERENCE NO.	SHEET NO.
1CR.20271.78, ETC.	6

NOTES:

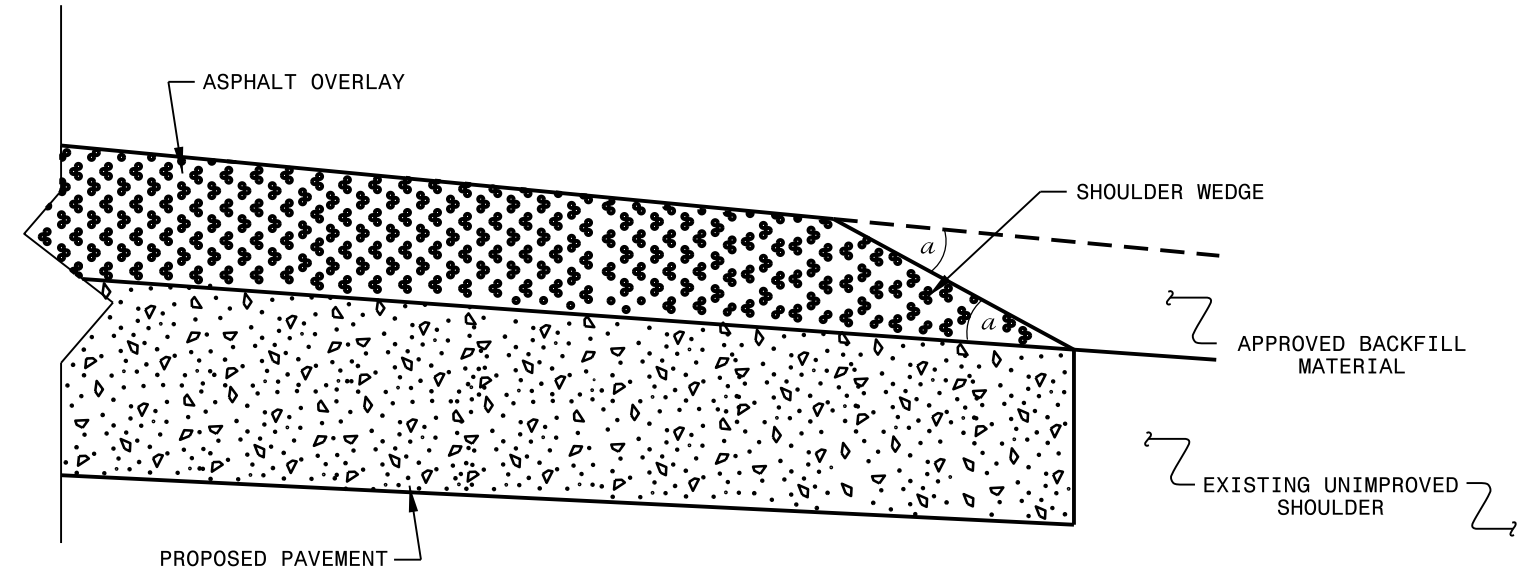
- \*ALL PAVED S.R. ROADS TO BE RESURFACED TO THE ENDS OF THE RADII, OR AS DIRECTED BY THE ENGINEER
- \*EDGES, PAVEMENT WIDENING, INTERSECTIONS, AND BRIDGE FLARES ARE INCLUDED IN THE TABLE OF QUANTITIES
- \*SHOULDERS TO BE RECONSTRUCTED BY OTHERS



**TYPICAL SECTION NO.3**

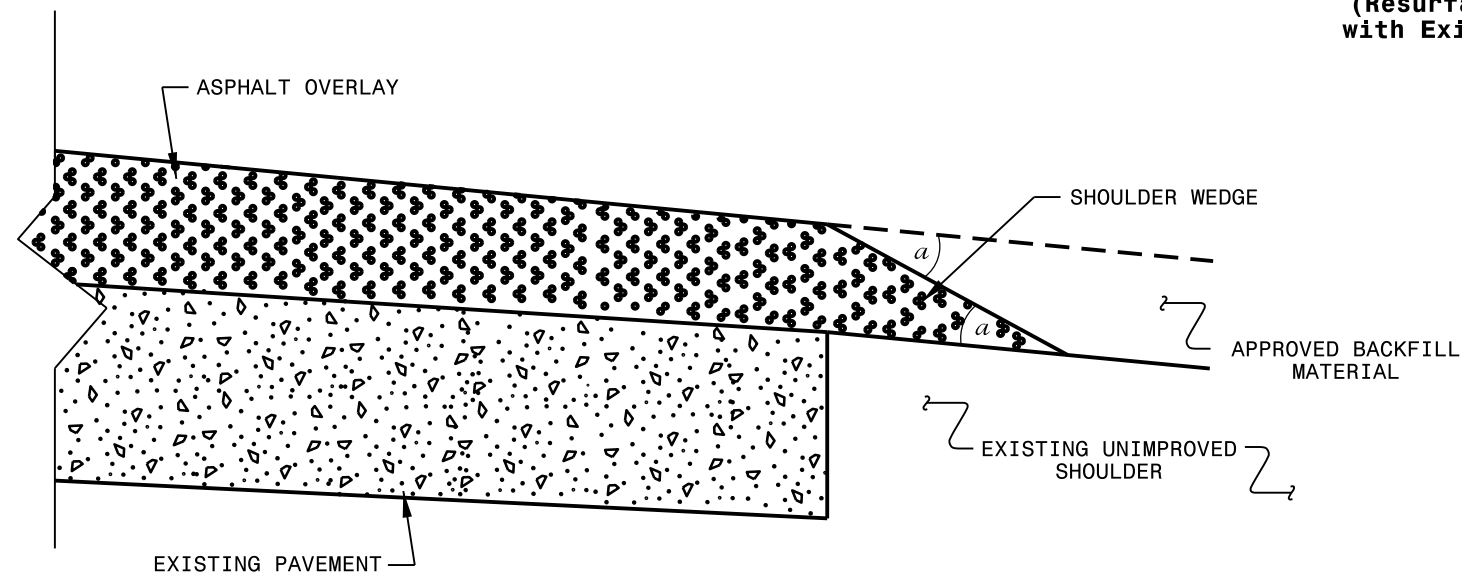
**USE WITH MAP 9**

NTS



### SHOULDER WEDGE DETAIL

(Resurfacing Projects w/ Widening or  
with Existing Paved Shoulder > 2 ft.)



### SHOULDER WEDGE DETAIL

(Resurfacing Projects w/ NO Widening)

**NOTES:**

- 1) DETAIL DOES NOT APPLY TO OGAFB AND ULTRA-THIN BONDED WEARING COURSE.
- 2) BACKFILL SHOULDER WITH APPROVED MATERIAL.
- 3) THE SHOULDER WEDGE DEVICE MAY BE DISENGAGED AT PAVED DRIVEWAYS AND SIDE STREETS.

*a* - SHOULDER WEDGE ANGLE = 30°

<b>CONTRACT STANDARDS AND DEVELOPMENT UNIT</b>	
Office 919-707-6950 FAX 919-250-4119	
<b>SHOULDER WEDGE DETAILS</b>	
ORIGINAL BY: T.SPELL	DATE: 7-19-11
MODIFIED BY:	DATE: 10/16/12
CHECKED BY:	DATE:
FILE SPEC.: s:\usr\details\stand\shoulderwedgedetail.dgn	

PROJECT NO.	SHEET NO.	TOTAL NO.
1CR.20271.78, ETC.	8	8

## SUMMARY OF QUANTITIES

PROJECT NO	COUNTY	MAP NO	ROUTE	DESCRIPTION	TYP NO	LANES	LANE TYPE	FINAL SURFACE TESTING REQUIRED	WARM MIX ASPHALT REQUIRED	LENGTH MI	WIDTH FT	MOBILIZATION LS	INCIDENTAL STONE BASE TONS	SURFACE COURSE, SF9.5A TONS	ASPHALT BINDER FOR PLANT MIX TONS	ADJ. OF METER OR VALVE BOX EA	TEMPORARY TRAFFIC CONTROL LS
1CR.20271.100	Currituck	1	SR 1373 CAROLS CIRCLE	FROM SR 1393 TO SR 1362	1	2	2WU	NO	NO	0.17	22	1	2	217	15		1
1CR.20271.101	Currituck	2	SR 1393 BAYVIEW DR	FROM SR 1362 TO SR 1239	1	2	2WU	NO	NO	0.53	22	*	10	608	41		*
1CR.20271.102	Currituck	3	SR 1372 YARNES ST	FROM SR 1239 TO SR 1393	1	2	2WU	NO	NO	0.09	22	*	2	128	9		*
1CR.20271.78	Currituck	4	SR 1301 WEDGEWOOD DR	FROM SR 1236 TO SR 1263	2	2	2WU	NO	NO	0.61	20	*	30	873	59		*
1CR.20271.79	Currituck	5	SR 1302 WEDGEWOOD DR	FROM SR 1301 TO SR 1301	2	2	2WU	NO	NO	0.60	20	*	50	859	58		*
1CR.20271.80	Currituck	6	SR 1335 ASH CIRCLE	FROM SR 1301 TO CUL-DE-SAC	2	2	2WU	NO	NO	0.05	20	*	9	89	6		*
1CR.20271.81	Currituck	7	SR 1334 CYPRESS CIRCLE	FROM SR 1303 TO CUL-DE-SAC	1	2	2WU	NO	NO	0.06	20	*	9	83	6		*
1CR.20271.82	Currituck	8	SR 1305 MAPLE CIRCLE	FROM SR 1301 TO CUL-DE-SAC	2	2	2WU	NO	NO	0.05	20	*	8	95	6		*
1CR.20271.83	Currituck	9	SR 1336 WEDGEWOOD BLVD	FROM SR 1222 TO SR 1301	3	2	2WD	NO	NO	0.08	24	*	9	137	9	2	*
1CR.20271.84	Currituck	10	SR 1337 ELM CIRCLE	SR 1301 TO CUL-DE-SAC	2	2	2WU	NO	NO	0.06	18	*	8	100	7		*
1CR.20271.85	Currituck	11	SR 1308 JUNIPER CIRCLE	FROM SR 1306 TO CUL-DE-SAC	1	2	2WU	NO	NO	0.06	20	*	10	103	7		*
1CR.20271.85	Currituck	12	SR 1307 POPLAR CIRCLE	FROM SR 1306 TO CUL-DE-SAC	1	2	2WU	NO	NO	0.07	20	*	9	101	7		*
1CR.20271.85	Currituck	13	SR 1306 WILLOW DR	FROM SR 1302 TO SR1301	2	2	2WU	NO	NO	0.27	20	*	25	396	27		*
1CR.20271.86	Currituck	14	SR 1332 CEDAR CIRCLE	FROM SR 1302 TO CUL-DE-SAC	1	2	2WU	NO	NO	0.03	20	*	5	58	4		*
1CR.20271.87	Currituck	15	SR 1303 SYCAMORE DR	FROM SR 1302 TO SR 1301	1	2	2WU	NO	NO	0.25	20	*	20	269	18		*
1CR.20271.88	Currituck	16	SR 1333 BEECH CIRCLE	FROM SR 1303 TO CUL-DE-SAC	1	2	2WU	NO	NO	0.11	20	*	15	132	9		*
1CR.20271.89	Currituck	17	SR 1263 WALKER DR	FROM SR 1222 TO SR 1301	2	2	2WU	NO	NO	0.45	20	*	15	661	44		*
1CR.20271.90	Currituck	18	SR 1304 ROBERT WALKER RD	FROM SR 1263 TO SR 1338	1	2	2WU	NO	NO	0.20	20	*	15	225	15		*
1CR.20271.91	Currituck	19	SR 1338 TUPELO ST	FROM SR 1304 TO SR 1339	2	2	2WU	NO	NO	0.06	20	*	5	104	7		*
1CR.20271.92	Currituck	20	SR 1339 REDWOOD ST	FROM CUL-DE-SAC TO CUL-DE-SAC	2	2	2WU	NO	NO	0.24	20	*	18	357	24		*
1CR.20271.93	Currituck	21	SR 1316 WHITE OAK DR	FROM SR 1263 TO SR 1310	2	2	2WU	NO	NO	0.21	20	*	20	308	21		*
1CR.20271.94	Currituck	22	SR 1309 DOGWOOD DR	FROM SR 1263 TO SR 1310	2	2	2WU	NO	NO	0.21	20	*	18	301	20		*
1CR.20271.95	Currituck	23	SR 1318 HOLLY DR	FROM SR 1263 TO SR 1317	1	2	2WU	NO	NO	0.20	20	*	11	322	22		*
1CR.20271.96	Currituck	24	SR 1317 HALSTEAD DR	FROM SR 1263 TO DEAD END	2	2	2WU	NO	NO	0.16	20	*	20	268	18		*
1CR.20271.97	Currituck	25	SR 1310 MYRTLE DR	FROM SR 1301 TO CUL-DE-SAC	2	2	2WU	NO	NO	0.16	20	*	12	243	16		*
1CR.20271.98	Currituck	26	SR 1239 LAUNCH LANDING RD	FROM SR 1222 TO SR 1362	1	2	2WU	NO	NO	0.88	18	*	15	910	61		*
1CR.20271.99	Currituck	27	SR 1362 WATERS DR	FROM SR 1239 TO DEAD END	1	2	2WU	NO	NO	0.37	22	*	15	436	29		*
<b>GRAND TOTAL</b>										<b>6.223</b>		<b>1</b>	<b>385</b>	<b>8,383</b>	<b>565</b>	<b>2</b>	<b>1</b>