

16-OCT-2013 15:00
 C:\D\CurrentProjects\DIVISION PROJECT WORKING FILES\District Three\DA00181Hyde, Tyrrell & Washington Co., Resurfacing (2014)\I Pre-Bid Documents\L.Rdy_atn_us264hyde.dgn
 AT DICAD257101L
 cslachta

CONTRACT NO.: DA00181 **WBS NO.: ICR.10481.12, ETC.**



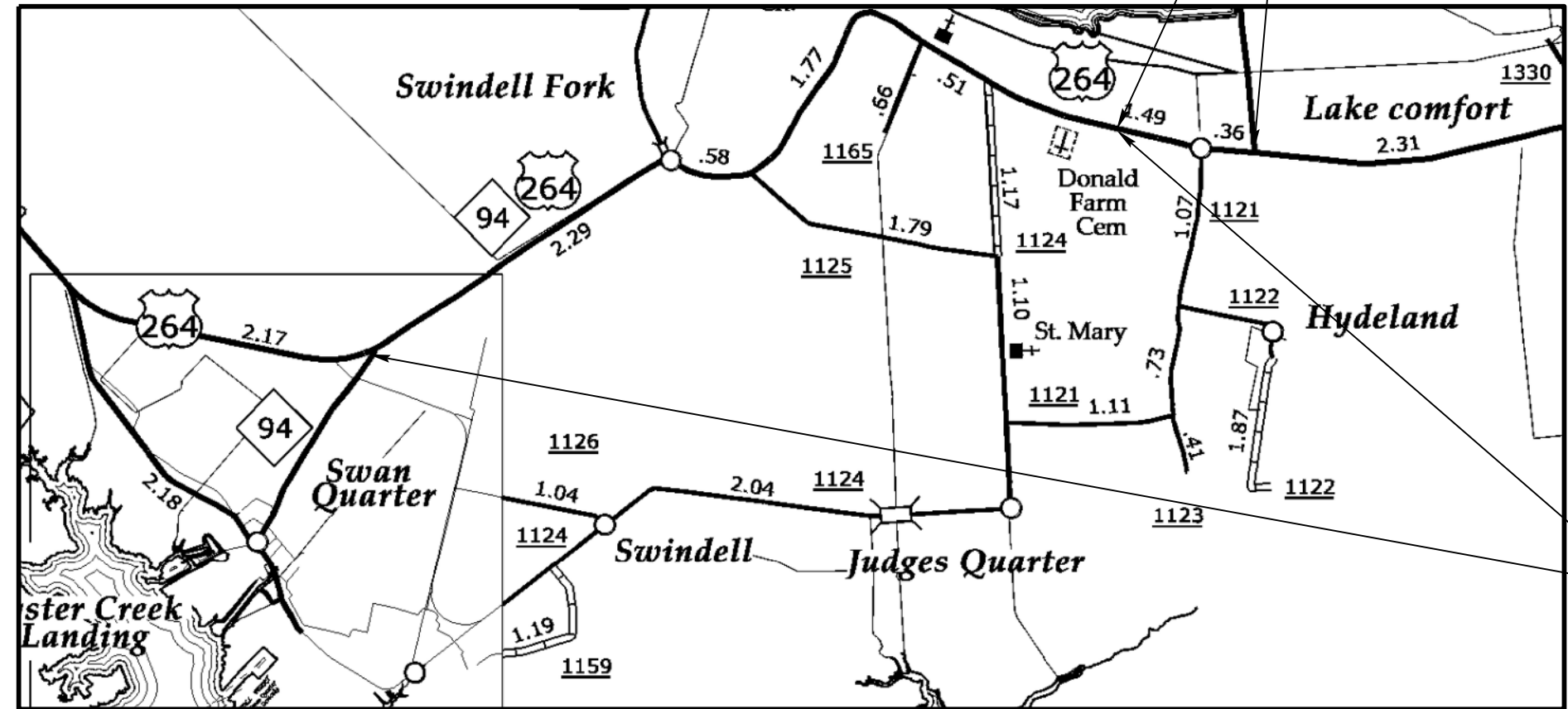
STATE OF NORTH CAROLINA
 DIVISION OF HIGHWAYS

HYDE COUNTY

US 264 MAP # 2

LOCATION: MAP #1 US 264 FROM NC 94 TO NC 94
MAP #2 US 264 FROM BEGIN TURN LANE TO END TURN LANE
TYPE OF WORK: RESURFACING

STATE	STATE PROJECT REFERENCE NO.	SHEET NO.	TOTAL SHEETS
N.C.	ICR.10481.12, ETC.	1	9
STATE PROJ. NO.	F.A. PROJ. NO.	DESCRIPTION	



US 264 MAP # 1

NOT TO SCALE

PROJECT LENGTH

 MAP#1 WBS# ICR.10481.12 = 6.5 MILES
 MAP#2 WBS# ICR.10481.12 = 0.73 MILES

Prepared in the Office of:
DIVISION OF HIGHWAYS

2012 STANDARD SPECIFICATIONS

LETTING DATE: _____

W.B. HOBBS, P.E.
DIVISION PROJECT MANAGER

C.E. SLACHTA
DIVISION PROPOSALS ENGINEER

DIVISION OF HIGHWAYS
 STATE OF NORTH CAROLINA

16-OCT-2013 15:02
 C:\D\CURRENT\PROJECTS\DIVISION PROJECT WORKING FILES\District Three\DA00181\Hyde, Tyrrell & Washington Co. Resurfacing (2014)\Pre-Bid Documents\L.Rdy_atn_us264nyde.dgn
 csilachta AT DICAD257101L

CONTRACT NO. : DA00181 **WBS NO. : ICR.10481.12, ETC.**



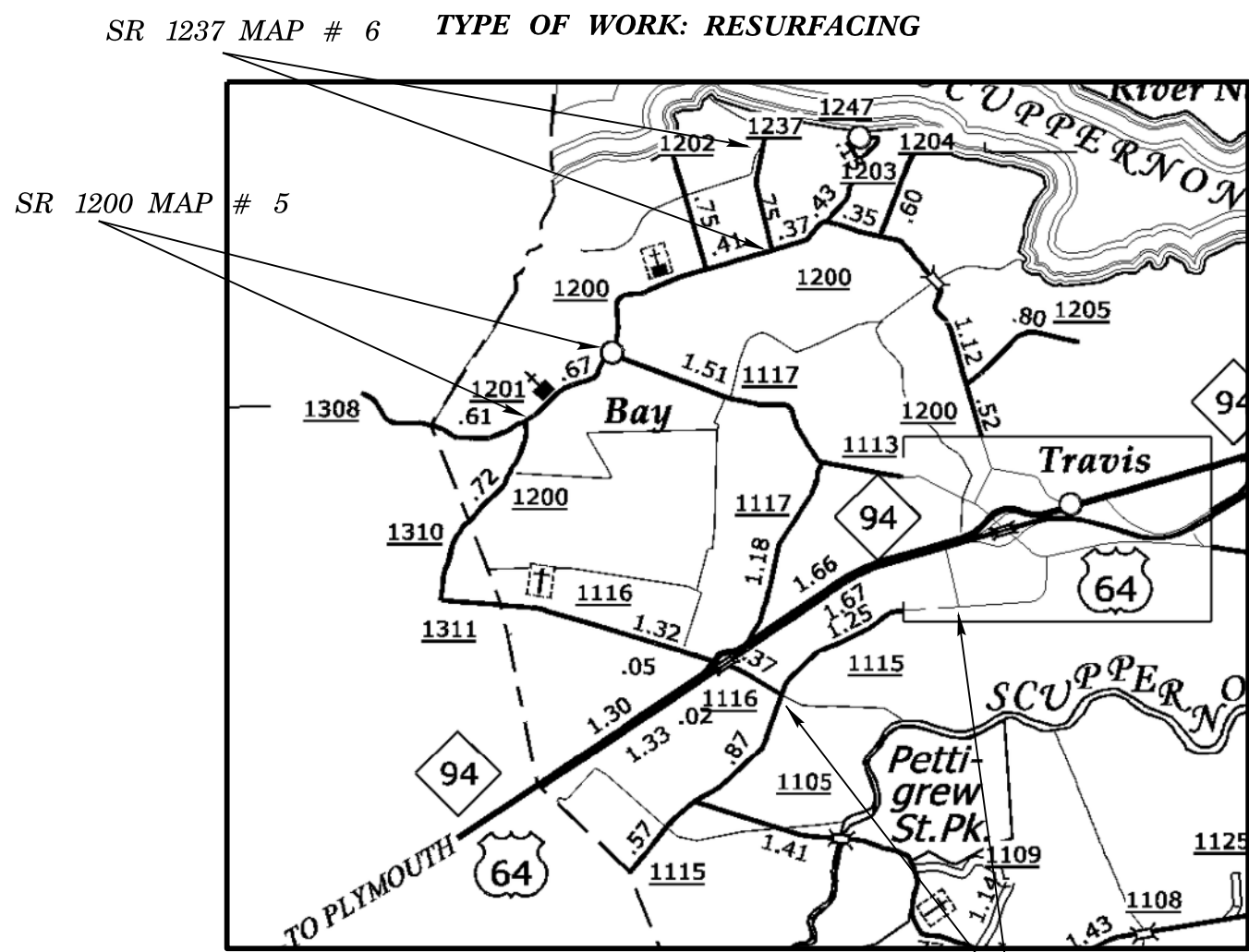
STATE OF NORTH CAROLINA
 DIVISION OF HIGHWAYS

TYRRELL COUNTY

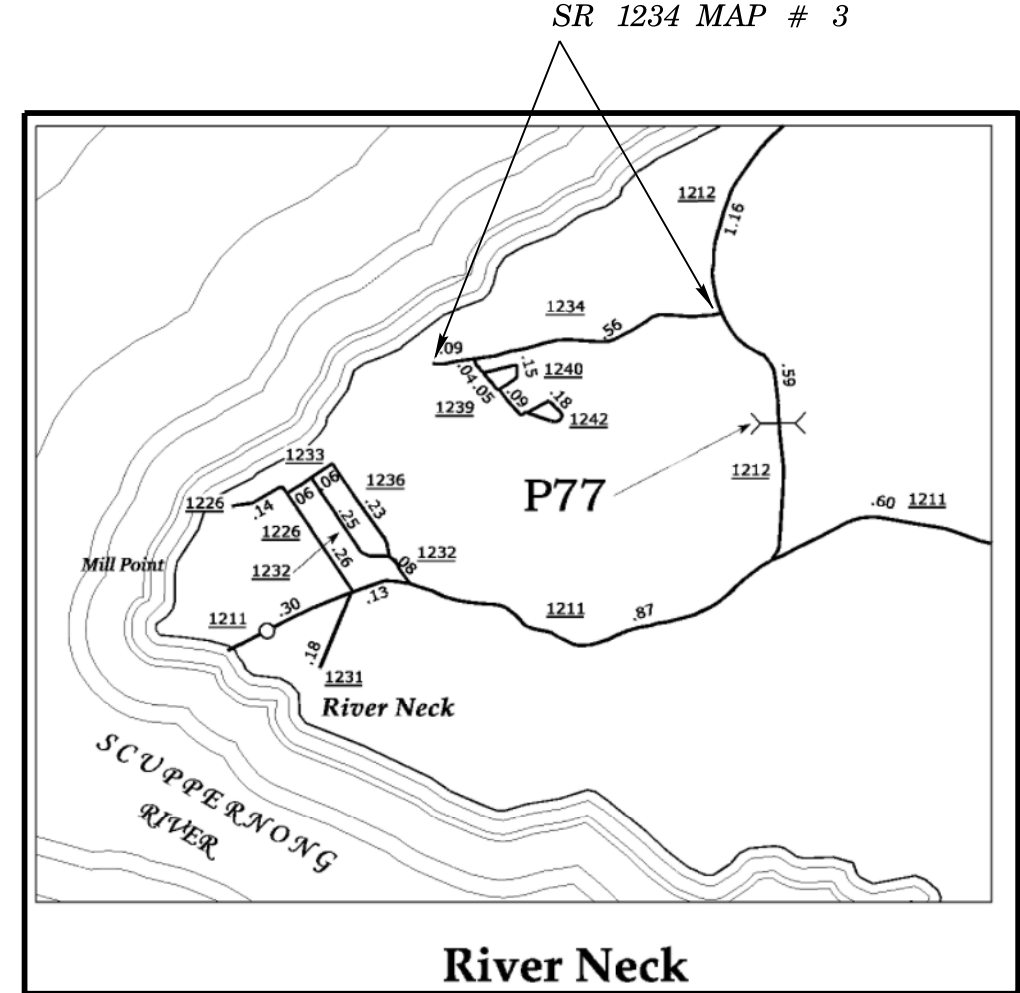
STATE	STATE PROJECT REFERENCE NO.	SHEET NO.	TOTAL SHEETS
N.C.	1CR.10481.12, ETC.	2	9
STATE PROJ. NO.	F.A. PROJ. NO.	DESCRIPTION	

LOCATION: MAP #3 SR 1234 FROM 1212 TO DEAD END / MAP #5 SR 1200 FROM SR 1201 TO SR 1117
MAP #6 SR 1237 FROM 1200 TO DEAD END / MAP #7 SR 1115 FROM SR 1116 TO SR 1114

SR 1237 MAP # 6 TYPE OF WORK: RESURFACING



SR 1115 MAP # 7



NOT TO SCALE

PROJECT LENGTH

- MAP#3 WBS# 1CR.20891.24 = .64 MILES
- MAP#5 WBS# 1CR.20481.26 = .67 MILES
- MAP#6 WBS# 1CR.20481.27 = .75 MILES
- MAP#7 WBS# 1CR.20891.28 = 1.2 MILES

Prepared In the Office of:
DIVISION OF HIGHWAYS

2012 STANDARD SPECIFICATIONS LETTING DATE: _____	W.B. HOBBS, P.E. DIVISION PROJECT MANAGER C.E. SLACHTA DIVISION PROPOSALS ENGINEER
---	---

DIVISION OF HIGHWAYS
 STATE OF NORTH CAROLINA

16-OCT-2013 15:03
 C:\D\CurrentProjects\DIVISION PROJECT WORKING FILES\District Three\DA00181\Hyde, Tyrrell & Washington Co. Resurfacing (2014)\I Pre-Bid Documents\L_Rdy_atn_us264nyde.dgn
 09/08/99
 AT DICAD257101L
 cslachta

CONTRACT NO.: DA00181 **WBS NO.: ICR.10481.12, ETC.**



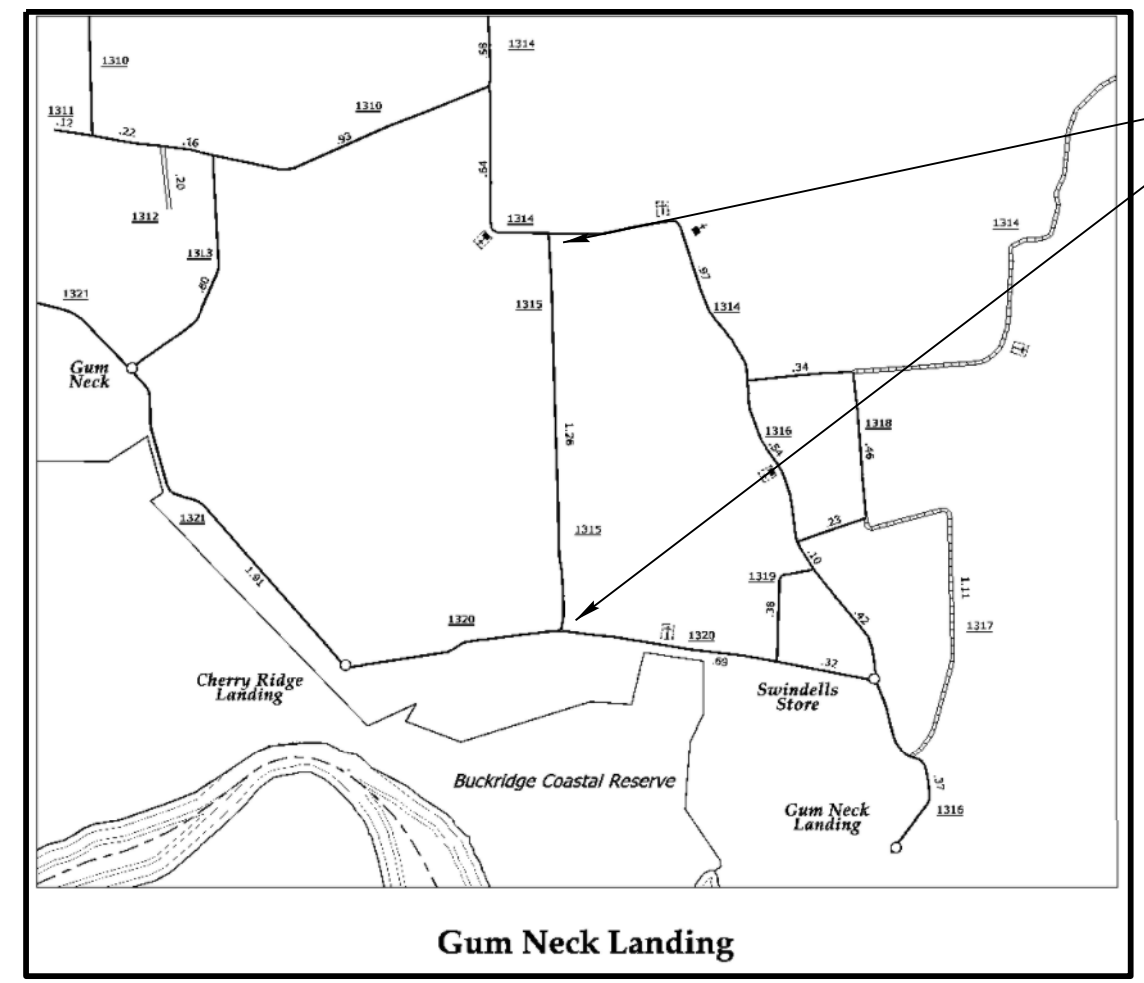
STATE OF NORTH CAROLINA
 DIVISION OF HIGHWAYS

TYRRELL COUNTY

STATE	STATE PROJECT REFERENCE NO.	SHEET NO.	TOTAL SHEETS
N.C.	ICR.10481.12, ETC.	3	9
STATE PROJ. NO.	F.A. PROJ. NO.	DESCRIPTION	

LOCATION: MAP #4 SR 1315 FROM SR 1314 TO SR 1320

TYPE OF WORK: RESURFACING



SR 1315 MAP # 4

NOT TO SCALE

PROJECT LENGTH
 MAP#4 WBS# ICR.20891.25 = 1.3 MILES

Prepared in the Office of:
DIVISION OF HIGHWAYS

2012 STANDARD SPECIFICATIONS

LETTING DATE: _____

W.B. HOBBS, P.E.
 DIVISION PROJECT MANAGER

C.E. SLACHTA
 DIVISION PROPOSALS ENGINEER

DIVISION OF HIGHWAYS
 STATE OF NORTH CAROLINA

16-OCT-2013 15:08
 C:\D\CURRENT\PROJECTS\DIVISION PROJECT WORKING FILES\District Three\DA00181\Hyde, Tyrrell & Washington Co. Resurfacing (2014)\I Pre-Bid Documents\I.Rdy_atn_us264nyde.dgn
 cslachta AT DICAD257101L

CONTRACT NO.: DA00181 **WBS NO.: 1CR.10481.12, ETC.**



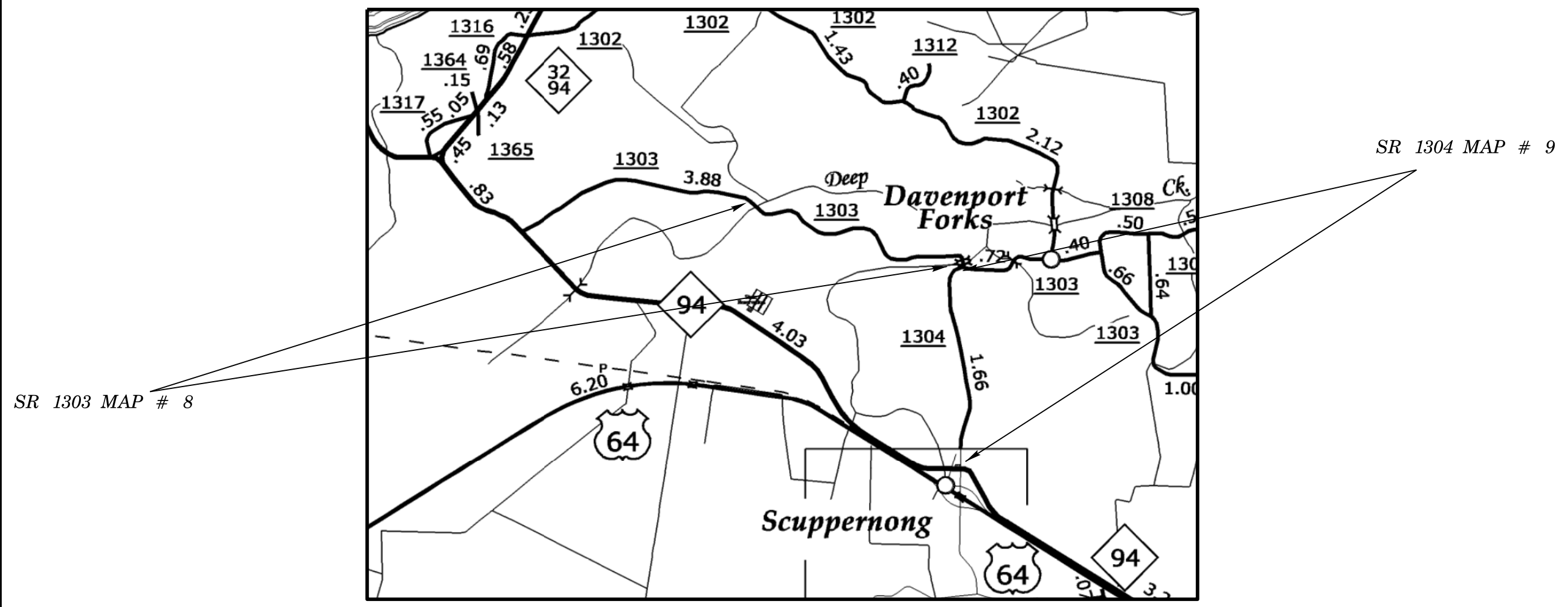
STATE OF NORTH CAROLINA
 DIVISION OF HIGHWAYS

WASHINGTON COUNTY

STATE	STATE PROJECT REFERENCE NO.	SHEET NO.	TOTAL SHEETS
N.C.	1CR.10481.12, ETC.	4	9
STATE PROJ. NO.	F.A. PROJ. NO.	DESCRIPTION	

LOCATION: MAP #8 SR 1303 FROM 1304 TO NEW PAVEMENT
MAP #9 SR 1304 FROM NC 94 TO SR 1303

TYPE OF WORK: RESURFACING



NOT TO SCALE

PROJECT LENGTH

 MAP#8 WBS# 1CR.20941.21 = 2.1 MILES
 MAP#9 WBS# 1CR.20941.22 = 1.66 MILES

Prepared in the Office of:
DIVISION OF HIGHWAYS

2012 STANDARD SPECIFICATIONS
 LETTING DATE: _____

W.B. HOBBS, P.E.
DIVISION PROJECT MANAGER

C.E. SLACHTA
DIVISION PROPOSALS ENGINEER

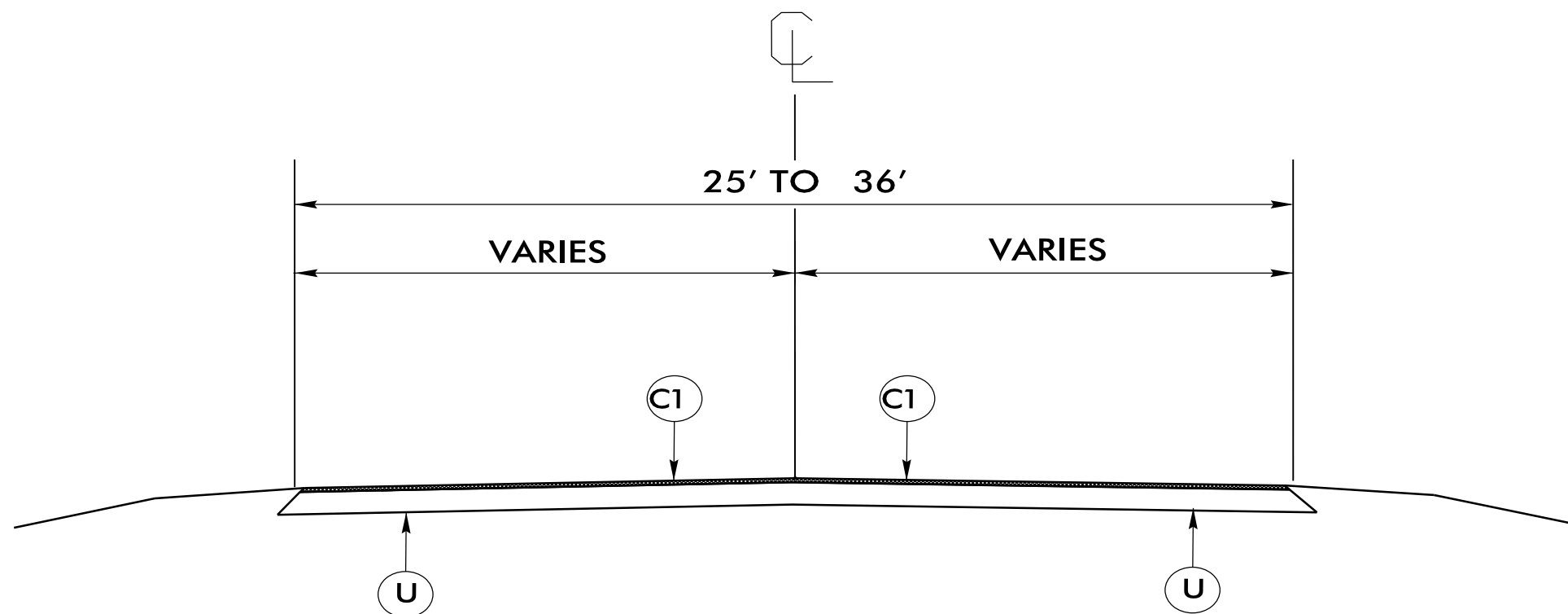
DIVISION OF HIGHWAYS
 STATE OF NORTH CAROLINA

NOTES:

1. ALL PAVED S.R. ROADS TO BE RESURFACED TO THE ENDS OF THE RADII OR AS DIRECTED BY THE ENGINEER
2. EDGES, PAVEMENT WIDENING, INTERSECTIONS, AND BRIDGE FLARES ARE INCLUDED IN THE TABLE OF QUANTITIES
3. PAVEMENT EDGE SLOPES ARE 1:1 UNLESS SHOWN OTHERWISE
4. SHOULDERS AND DITCHES ARE TO BE CONSTRUCTED BY OTHERS

PROJECT REFERENCE NO.	SHEET NO.
1CR.10481.12, ETC.	5 OF 8

PAVEMENT SCHEDULE	
C1	PROP. APPROX. 1.5" ASPHALT CONCRETE SURFACE COURSE TYPE S9.5B, AT AN AVERAGE RATE OF 168 LBS. PER SQ.YD.
U	EXISTING PAVEMENT.



TYPICAL SECTION #1

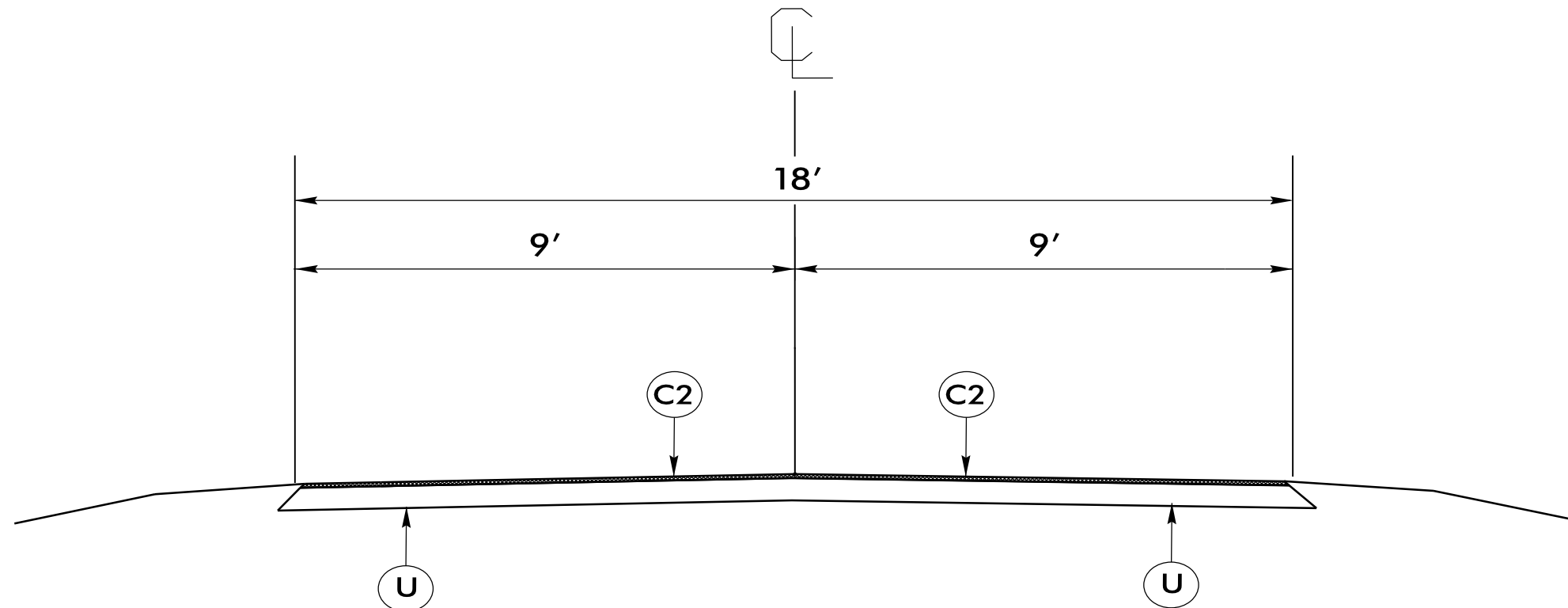
USE WITH MAPS 1 & 2

NOTES:

1. ALL PAVED S.R. ROADS TO BE RESURFACED TO THE ENDS OF THE RADII OR AS DIRECTED BY THE ENGINEER
2. EDGES, PAVEMENT WIDENING, INTERSECTIONS, AND BRIDGE FLARES ARE INCLUDED IN THE TABLE OF QUANTITIES
3. PAVEMENT EDGE SLOPES ARE 1:1 UNLESS SHOWN OTHERWISE
4. SHOULDERS AND DITCHES ARE TO BE CONSTRUCTED BY OTHERS

PROJECT REFERENCE NO.	SHEET NO.
1CR.10481.12, ETC.	6 OF 8

PAVEMENT SCHEDULE	
C2	PROP. APPROX. 1.5" ASPHALT CONCRETE SURFACE COURSE TYPE SF9.5A, AT AN AVERAGE RATE OF 165 LBS. PER SQ.YD.
U	EXISTING PAVEMENT.



TYPICAL SECTION #2

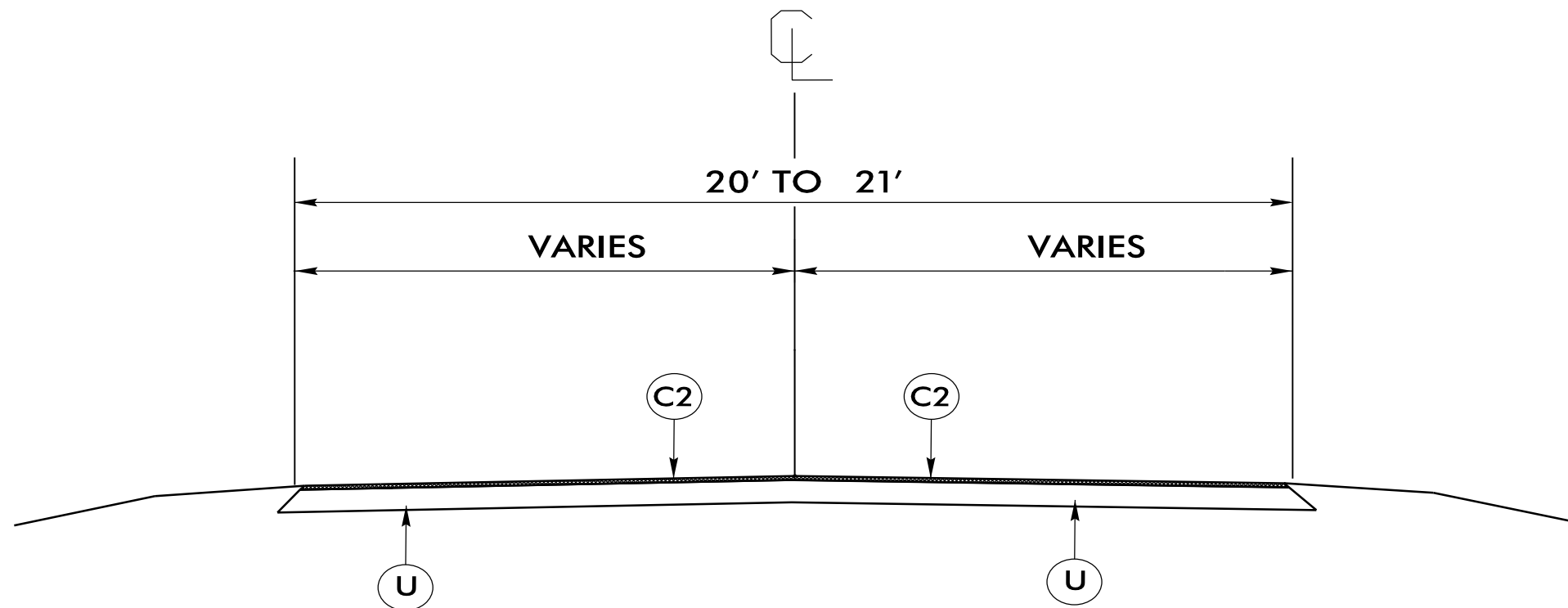
USE WITH MAP 4, 5, 7, 8 AND 9

NOTES:

1. ALL PAVED S.R. ROADS TO BE RESURFACED TO THE ENDS OF THE RADII OR AS DIRECTED BY THE ENGINEER
2. EDGES, PAVEMENT WIDENING, INTERSECTIONS, AND BRIDGE FLARES ARE INCLUDED IN THE TABLE OF QUANTITIES
3. PAVEMENT EDGE SLOPES ARE 1:1 UNLESS SHOWN OTHERWISE
4. SHOULDERS AND DITCHES ARE TO BE CONSTRUCTED BY OTHERS

PROJECT REFERENCE NO.	SHEET NO.
1CR.10481.12, ETC.	7 OF 9

PAVEMENT SCHEDULE	
C2	PROP. APPROX. 1.5" ASPHALT CONCRETE SURFACE COURSE TYPE SF9.5A, AT AN AVERAGE RATE OF 165 LBS. PER SQ.YD.
U	EXISTING PAVEMENT.



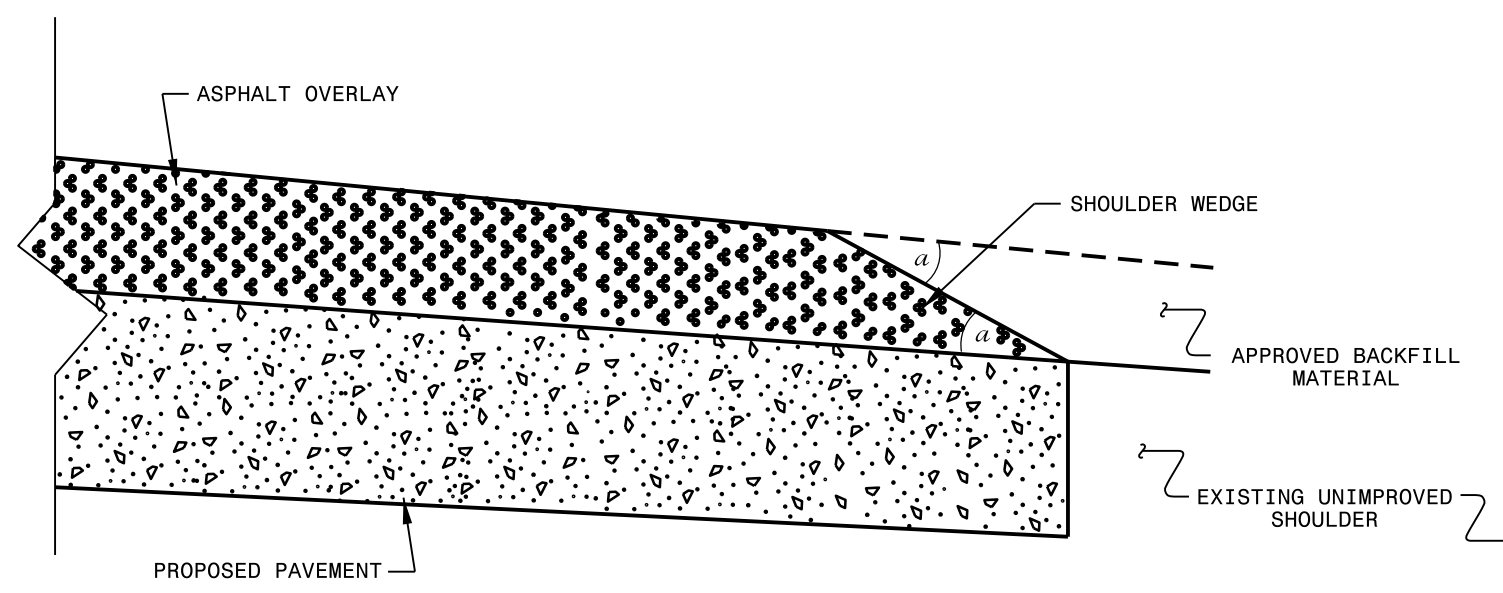
TYPICAL SECTION #3

USE WITH MAP 3 AND 6

PROJECT NO. 1CR.10481.12, ETC.	SHEET NO. 8	TOTAL NO. 8
--	-----------------------	-----------------------

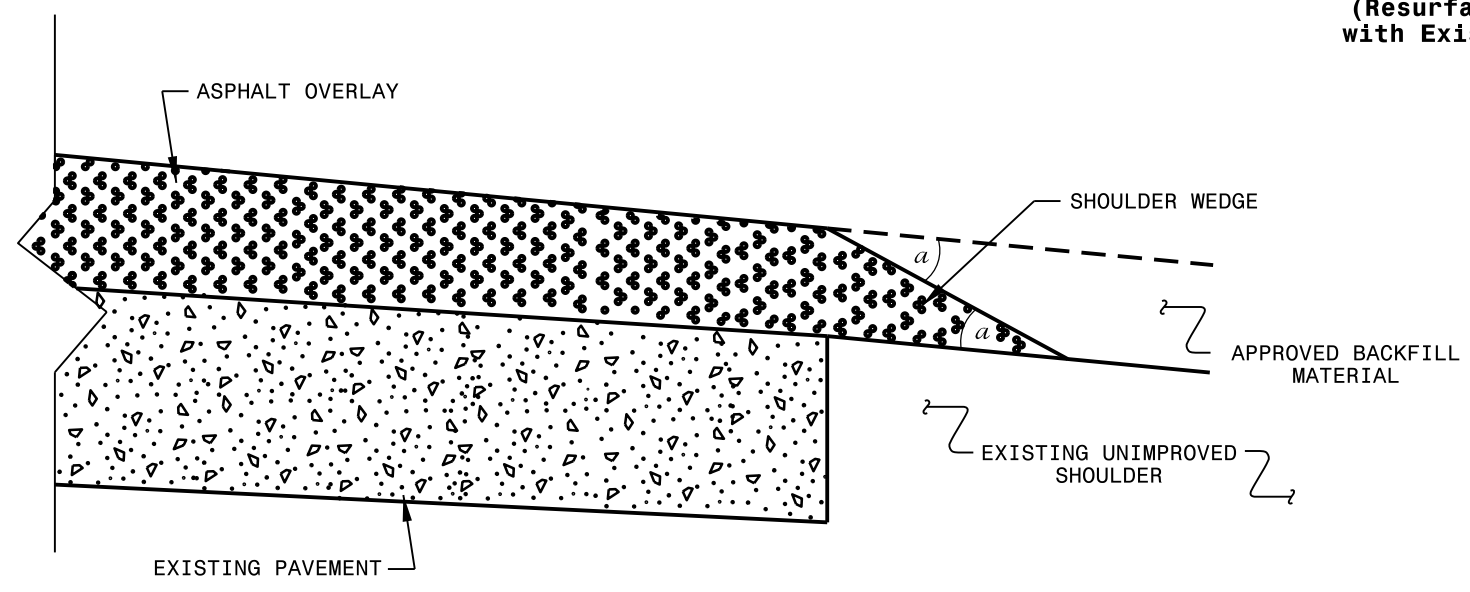
SUMMARY OF QUANTITIES

PROJECT	COUNTY	MAP	ROUTE	DESCRIPTION	TYP	LANES	LANE TYPE	FINAL SURFACE TESTING REQUIRED	WARM MIX ASPHALT REQUIRED	LENGTH	WIDTH	MOBILIZATION	SURFACE COURSE, S9.5B	SURFACE COURSE, SF9.5A	ASPHALT BINDER FOR PLANT MIX	TEMPORARY TRAFFIC CONTROL
NO		NO			NO					MI	FT	LUMP SUM	TONS	TONS	TONS	LUMP SUM
1CR.10481.12	Hyde	1	US 264	FROM NC 94 TO NC 94	1	2	2WU	NO	NO	6.5	25	1	8,853		531	1
1CR.10481.12	Hyde	2	US 264 TURN LANE	FROM BEG TURN LANE TO END TURN LANE	1	2	2WU	NO	NO	0.73	36	*	1,430		86	*
1CR.20891.24	Tyrrell	3	SR 1234	FROM SR 1212 TO DEAD END	3	2	2WU	NO	NO	0.64	21	*		720	48	*
1CR.20891.25	Tyrrell	4	SR 1315	FROM SR1314 TO 1320	2	2	2WU	NO	NO	1.3	18	*		1,254	84	*
1CR.20891.26	Tyrrell	5	SR 1200	FROM SR 1201 TO SR 1117	2	2	2WU	NO	NO	0.67	18	*		647	43	*
1CR.20891.27	Tyrrell	6	SR 1237	FROM SR 1200 TO DEAD END	3	2	2WU	NO	NO	0.75	20	*		804	54	*
1CR.20891.28	Tyrrell	7	SR 1115	FROM SR 1116 TO SR 1114	2	2	2WU	NO	NO	1.2	18	*		1,158	78	*
1CR.20941.21	Washington	8	1303	FROM SR 1304 TO NEW PAVEMENT	2	2	2WU	NO	NO	2.1	18	*		2,026	136	*
1CR.20941.22	Washington	9	SR 1304	FORM NC 94 TO SR 1303	2	2	2WU	NO	NO	1.66	18	*		1,602	107	*
GRAND TOTAL										15.55		1	10,283	8,211	1,167	1



SHOULDER WEDGE DETAIL

(Resurfacing Projects w/ Widening or with Existing Paved Shoulder > 2 ft.)



SHOULDER WEDGE DETAIL

(Resurfacing Projects w/ NO Widening)

- NOTES:
- 1) DETAIL DOES NOT APPLY TO OGAFD AND ULTRA-THIN BONDED WEARING COURSE.
 - 2) BACKFILL SHOULDER WITH APPROVED MATERIAL.
 - 3) THE SHOULDER WEDGE DEVICE MAY BE DISENGAGED AT PAVED DRIVEWAYS AND SIDE STREETS.

a - SHOULDER WEDGE ANGLE = 30°

CONTRACT STANDARDS AND DEVELOPMENT UNIT	
Office 919-707-6950 FAX 919-250-4119	
SHOULDER WEDGE DETAILS	
ORIGINAL BY: T.SPELL	DATE: 7-19-11
MODIFIED BY:	DATE: 10/16/12
CHECKED BY:	DATE:
FILE SPEC.: susr/details/stand/shoulderwedgedetail.dgn	