

09/08/09

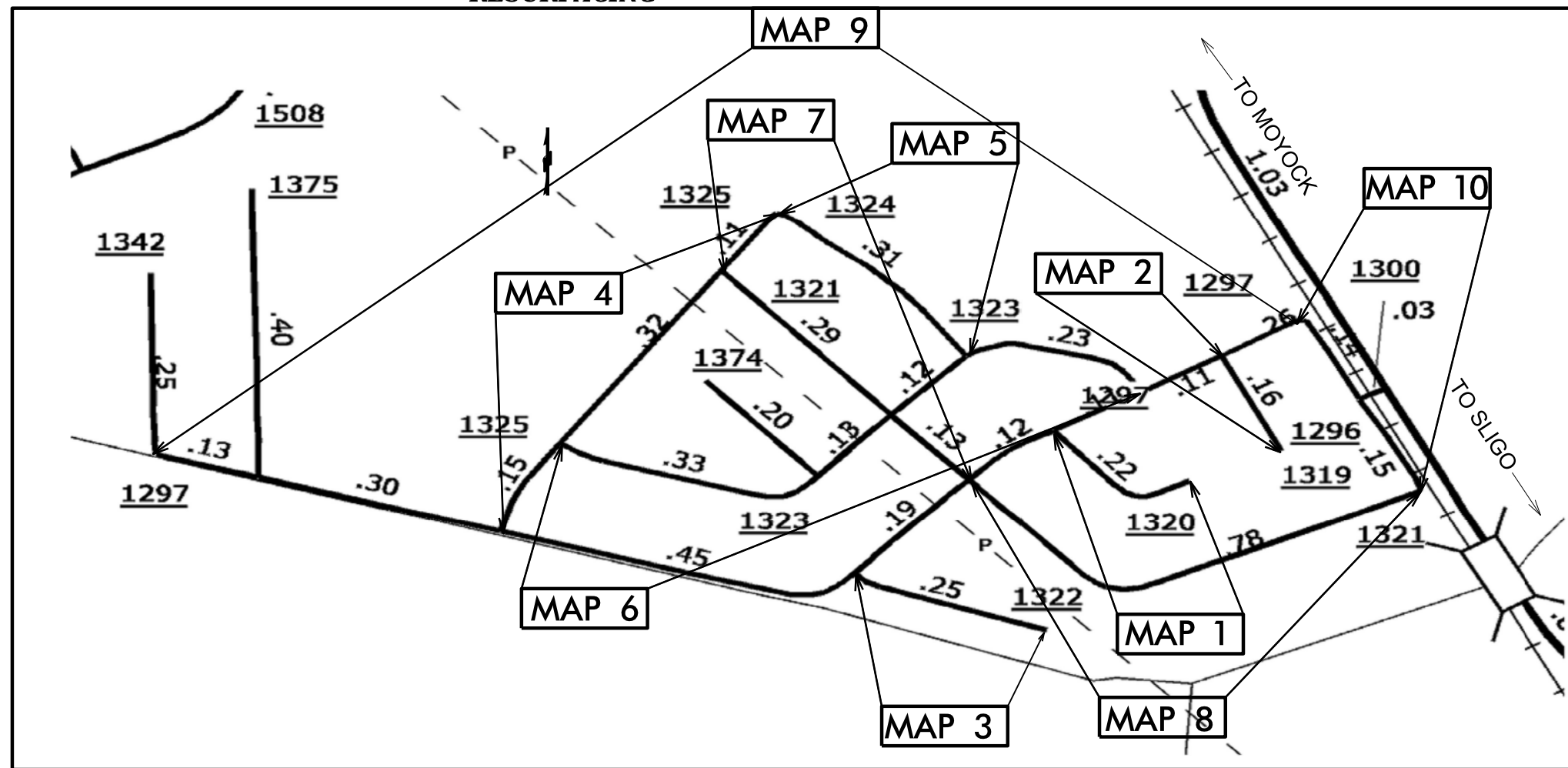
CONTRACT NO.: DA00177 WBS ELEMENT: ICR.20271.68,ETC.

STATE OF NORTH CAROLINA
DIVISION OF HIGHWAYS

CURRITUCK COUNTY

LOCATION: MAP 1 SR 1320 (SPUR TR.) FROM SR 1297 TO DEAD END
 MAP 2 SR 1319 (RANCLAND TR.) FROM SR 1297 TO DEAD END
 MAP 3 SR 1322 (MEADOW BLUE CHIP DR.) FROM SR 1297 TO DEAD END
 MAP 4 SR 1325 (LONGHORN DR.) FROM SR 1297 TO SR 1324
 MAP 5 SR 1324 (TIMBER DR.) FROM SR 1325 TO SR 1323
 MAP 6 SR 1323 (BISON DR.) FROM SR 1297 TO SR 1325
 MAP 7 SR 1321 (PINTO DR.) FROM SR 1325 TO SR 1297
 MAP 8 SR 1321 (PINTO DR.) FROM SR 1297 TO SR 1296
 MAP 9 SR 1297 (RANCLAND DR.) FROM SR 1342 TO SR 1296
 MAP 10 SR 1296 (COWBOY TR.) FROM SR 1297 TO SR 1321

TYPE OF WORK: RESURFACING



STATE	STATE PROJECT REFERENCE NO.	SHEET NO.	TOTAL SHEETS
N.C.	ICR.20271.68,ETC.	1	6
STATE PROJ. NO.	F.A. PROJ. NO.	DESCRIPTION	
1CR.20271.68		MAP 1	
1CR.20271.69		MAP 2	
1CR.20271.70		MAP 3	
1CR.20271.71		MAP 4	
1CR.20271.72		MAP 5	
1CR.20271.73		MAP 6	
1CR.20271.74		MAP 7	
1CR.20271.75		MAP 8	
1CR.20271.76		MAP 9	
1CR.20271.77		MAP 10	

NTS

PROJECT LENGTH	
LENGTH OF ROADWAY PROJECT MAP 1	= 0.21 MI.
LENGTH OF ROADWAY PROJECT MAP 2	= 0.16 MI.
LENGTH OF ROADWAY PROJECT MAP 3	= 0.25 MI.
LENGTH OF ROADWAY PROJECT MAP 4	= 0.58 MI.
LENGTH OF ROADWAY PROJECT MAP 5	= 0.31 MI.
LENGTH OF ROADWAY PROJECT MAP 6	= 0.82 MI.
LENGTH OF ROADWAY PROJECT MAP 7	= 0.42 MI.
LENGTH OF ROADWAY PROJECT MAP 8	= 0.63 MI.
LENGTH OF ROADWAY PROJECT MAP 9	= 1.53 MI.
LENGTH OF ROADWAY PROJECT MAP 10	= 0.29 MI.

Prepared in the Office of:
DIVISION OF HIGHWAYS
 113 Airport Dr., Edenton NC, 27932

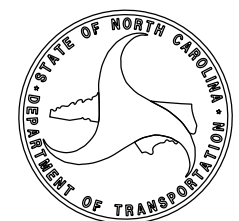
2012 STANDARD SPECIFICATIONS

LETTING DATE:
 NOVEMBER 20, 2013

W. B. HOBBS, P.E.
 DIVISION PROJECT MANAGER

C. E. SLACHTA
 DIVISION PROPOSALS ENGINEER

DIVISION OF HIGHWAYS
STATE OF NORTH CAROLINA



C O N T R A C T P A V E M E N T S C H E D U L E

C1	PROP. APPROX. 2" ASPHALT CONCRETE SURFACE COURSE, TYPE SF9.5A, AT AN AVERAGE RATE OF 110 LBS. PER SQ. YD. PER INCH. IN EACH OF TWO LAYERS
C2	PROP. APPROX. 1½" ASPHALT CONCRETE SURFACE COURSE, TYPE SF9.5A, AT AN AVERAGE RATE OF 165 LBS. PER SQ. YD.
U	EXISTING PAVEMENT

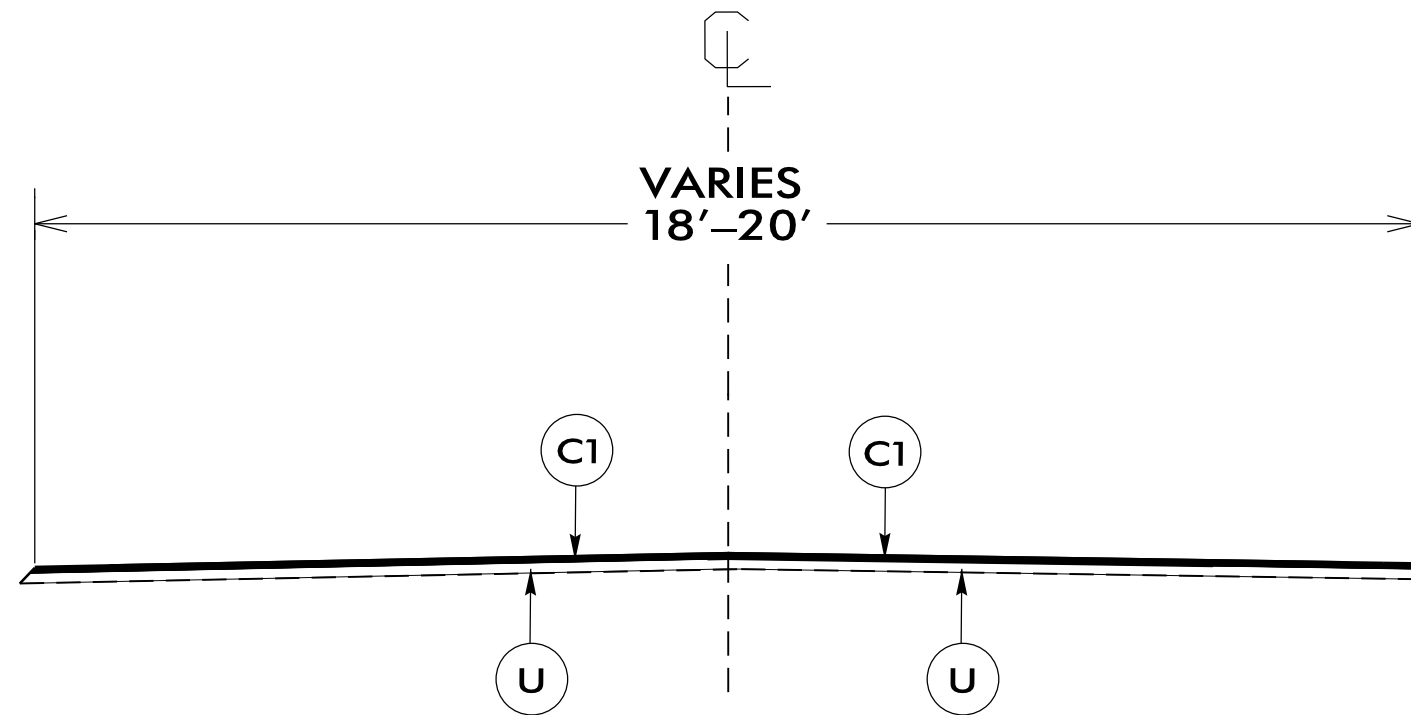
PAVEMENT SCHEDULE

C1	PROP. APPROX. 2" ASPHALT CONCRETE SURFACE COURSE, TYPE SF9.5A, AT AN AVERAGE RATE OF 110 LBS. PER SQ. YD. PER INCH. IN EACH OF TWO LAYERS
U	EXISTING PAVEMENT

PROJECT REFERENCE NO.	SHEET NO.
1CR.20271.68,ETC.	3

NOTES:

- *ALL PAVED S.R. ROADS TO BE RESURFACED TO THE ENDS OF THE RADI., OR AS DIRECTED BY THE ENGINEER
- *EDGES, PAVEMENT WIDENING, INTERSECTIONS, AND BRIDGE FLARES ARE INCLUDED IN THE TABLE OF QUANTITIES
- *PAVEMENT EDGE SLOPES ARE 1:1 UNLESS SHOWN OTHERWISE
- *SHOULDERS TO BE RECONSTRUCTED BY OTHERS



TYPICAL SECTION NO.1

USE WITH MAP 1,2,3,8,9

NTS

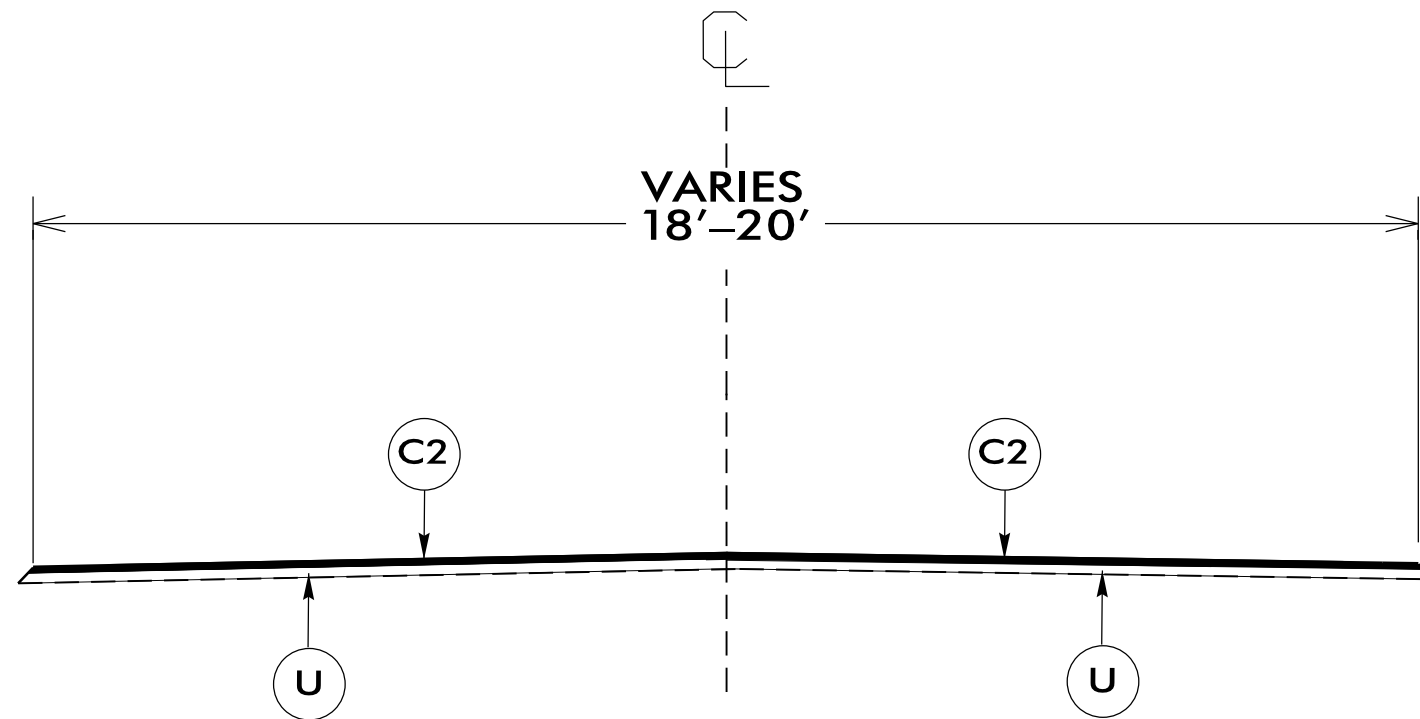
P A V E M E N T S C H E D U L E

C2	PROP. APPROX. 1½" ASPHALT CONCRETE SURFACE COURSE, TYPE SF9.5A, AT AN AVERAGE RATE OF 168 LBS. PER SQ. YD.
U	EXISTING PAVEMENT.

PROJECT REFERENCE NO.	SHEET NO.
1CR.20271.68,ETC.	4

NOTES:

- *ALL PAVED S.R. ROADS TO BE RESURFACED TO THE ENDS OF THE RADI., OR AS DIRECTED BY THE ENGINEER
- *EDGES, PAVEMENT WIDENING, INTERSECTIONS, AND BRIDGE FLARES ARE INCLUDED IN THE TABLE OF QUANTITIES
- *PAVEMENT EDGE SLOPES ARE 1:1 UNLESS SHOWN OTHERWISE
- *SHOULDERS TO BE RECONSTRUCTED BY OTHERS

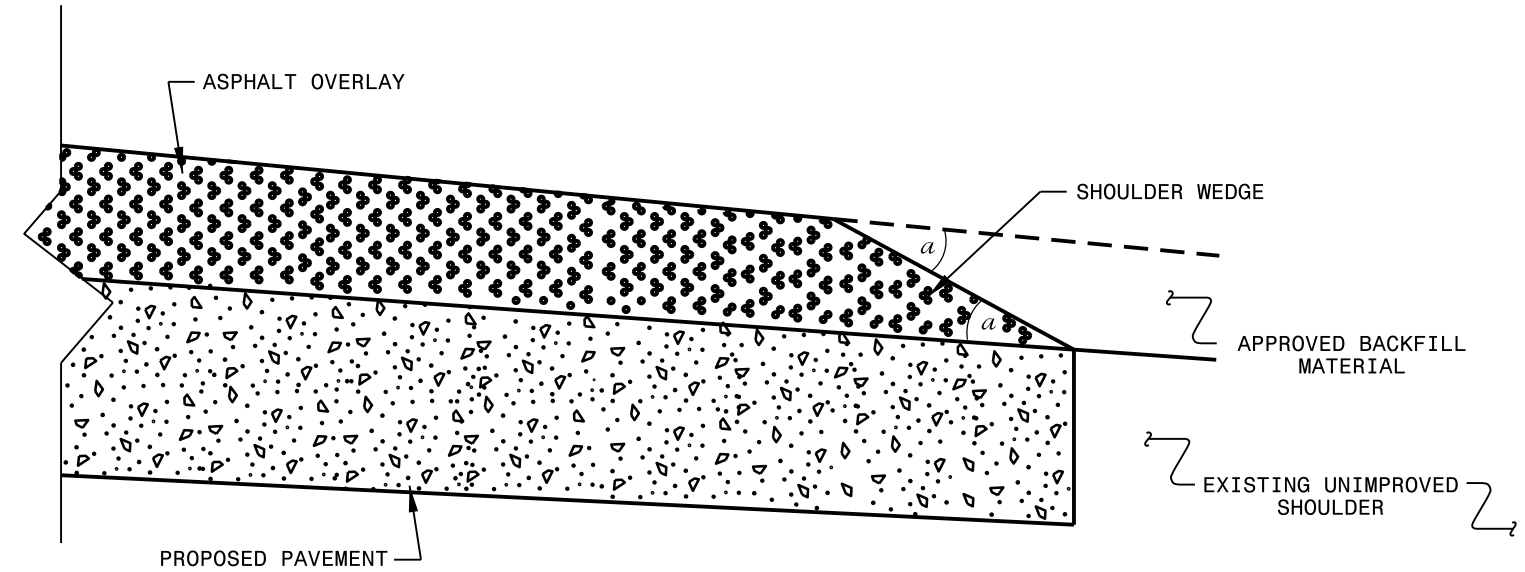


TYPICAL SECTION NO.2

USE WITH MAP 4,5,6,7,10

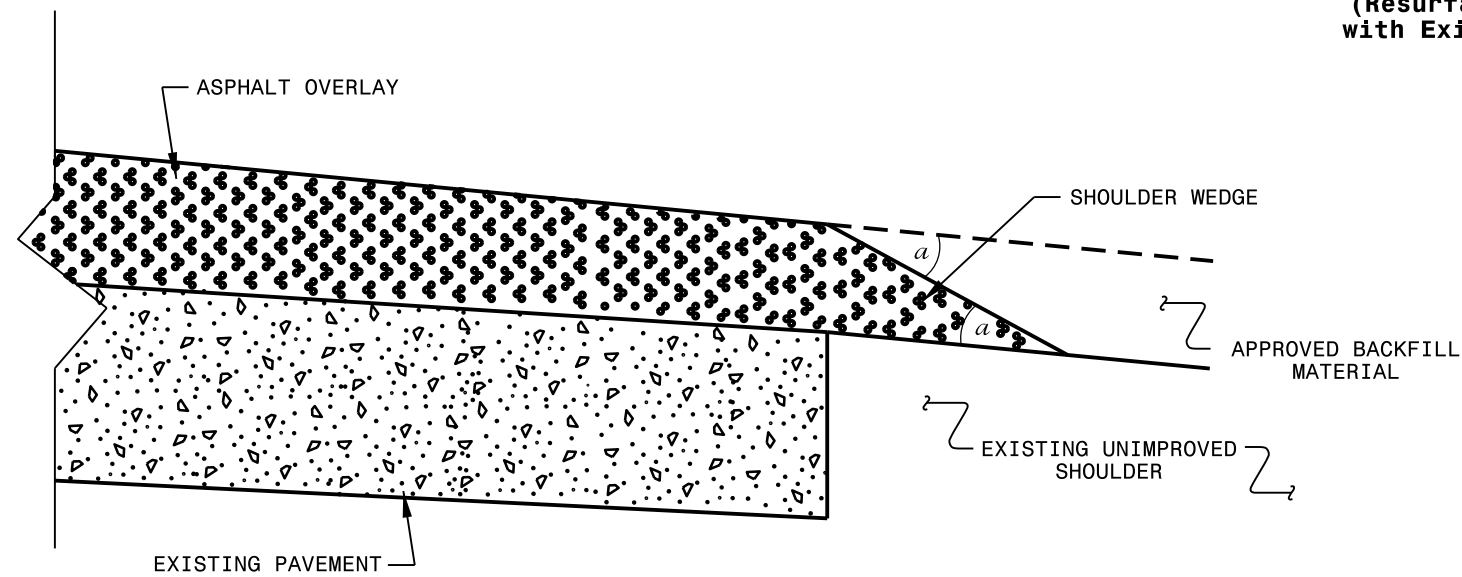
NTS

I:\OCT-2013\1608
 E:\District1\paving_Maps\2013\currituck\currituckpaver-onchland\001.LS-elr-ranch-landpave.dgn
 11/14/2013 10:43:43 AM



SHOULDER WEDGE DETAIL

(Resurfacing Projects w/ Widening or with Existing Paved Shoulder > 2 ft.)



SHOULDER WEDGE DETAIL

(Resurfacing Projects w/ NO Widening)

NOTES:

- 1) DETAIL DOES NOT APPLY TO OGAFB AND ULTRA-THIN BONDED WEARING COURSE.
- 2) BACKFILL SHOULDER WITH APPROVED MATERIAL.
- 3) THE SHOULDER WEDGE DEVICE MAY BE DISENGAGED AT PAVED DRIVEWAYS AND SIDE STREETS.

a - SHOULDER WEDGE ANGLE = 30°

CONTRACT STANDARDS AND DEVELOPMENT UNIT	
Office 919-707-6950 FAX 919-250-4119	
SHOULDER WEDGE DETAILS	
ORIGINAL BY: T.SPELL	DATE: 7-19-11
MODIFIED BY:	DATE: 10/16/12
CHECKED BY:	DATE:
FILE SPEC.: s:\usr\details\stand\shoulderwedgedetail.dgn	

PROJECT NO.	SHEET NO.	TOTAL NO.
1CR.20271.68,ETC	6	6

SUMMARY OF QUANTITIES

PROJECT NO	COUNTY	MAP NO	ROUTE	DESCRIPTION	TYP	LANES	LANE TYPE	FINAL SURFACE TESTING REQUIRED	WARM MIX ASPHALT REQUIRED	LENGTH MI	WIDTH FT	MOBILIZATION LS	INCIDENTAL STONE TONS	SURFACE COURSE, SF9.5A TONS	ASPHALT BINDER FOR PLANT MIX TONS	TEMPORARY TRAFFIC CONTROL LS
1CR.20271.68	Currituck	1	SR 1320 (SPUR TR.)	FROM SR 1297 RANCLAND DR. TO DEAD END	1	2	2WU	NO	NO	0.21	18	1	10	296	20	1
1CR.20271.69	Currituck	2	SR 1319 (RANCLAND TR.)	FROM SR 1297 RANCLAND DR. TO DEAD END	1	2	2WU	NO	NO	0.16	18	*	10	238	16	*
1CR.20271.70	Currituck	3	SR 1322 (MEADOW BLUE CHIP DR.)	FROM SR 1297 RANCLAND DR. TO DEAD END	1	2	2WU	NO	NO	0.25	18	*	10	343	23	*
1CR.20271.71	Currituck	4	SR 1325 (LONGHORN DR.)	FROM SR 1297 TO SR 1324	2	2	2WU	NO	NO	0.58	18	*	10	569	38	*
1CR.20271.72	Currituck	5	SR 1324 (TIMBER DR.)	FROM SR 1325 LONGHORN DR. TO SR 1323 BISON DR.	2	2	2WU	NO	NO	0.31	18	*	10	292	20	*
1CR.20271.73	Currituck	6	SR 1323 (BISON DR.)	FROM SR 1297 RANCLAND DR. TO SR 1325 LONGHORN DR.	2	2	2WU	NO	NO	0.82	18	*	10	819	55	*
1CR.20271.74	Currituck	7	SR 1321 (PINTO DR.)	FROM SR 1325 LONGHORN DR. TO SR 1297 RANCLAND DR.	2	2	2WU	NO	NO	0.42	18	*	10	368	25	*
1CR.20271.75	Currituck	8	SR 1321 (PINTO DR.)	FROM SR 1297 RANCLAND DR. TO SR 1296 COMBOY TR.	1	2	2WU	NO	NO	0.63	18	*	10	739	49	*
1CR.20271.76	Currituck	9	SR 1297 (RANCLAND DR.)	FROM SR 1342 MUSTANG TR. TO SR 1296 COWBOY DR.	1	2	2WU	NO	NO	1.53	20	*	40	2,141	143	*
1CR.20271.77	Currituck	10	SR 1296 (COWBOY TR.)	FROM SR 1297 RANCLAND DR. TO SR 1321 PINTO DR.	2	2	2WU	NO	NO	0.29	20	*	10	322	22	*
GRAND TOTAL										5.2		1	130	6,127	411	1