



26-OCT-2015 11:47  
 C:\D\Curren\Projects\DIVISION PROJECT WORKING FILES\District Three\DA00267 Chowan & Martin Co. Resurfacing (2016 - 2017)\1) Pre-Bid Documents\DA00267\_Plans.dgn  
 cslachta AT DICAD28235L

**CONTRACT NO.: DA00267 WBS NO.: 2016CPT.01.08.20211.1, ETC.**



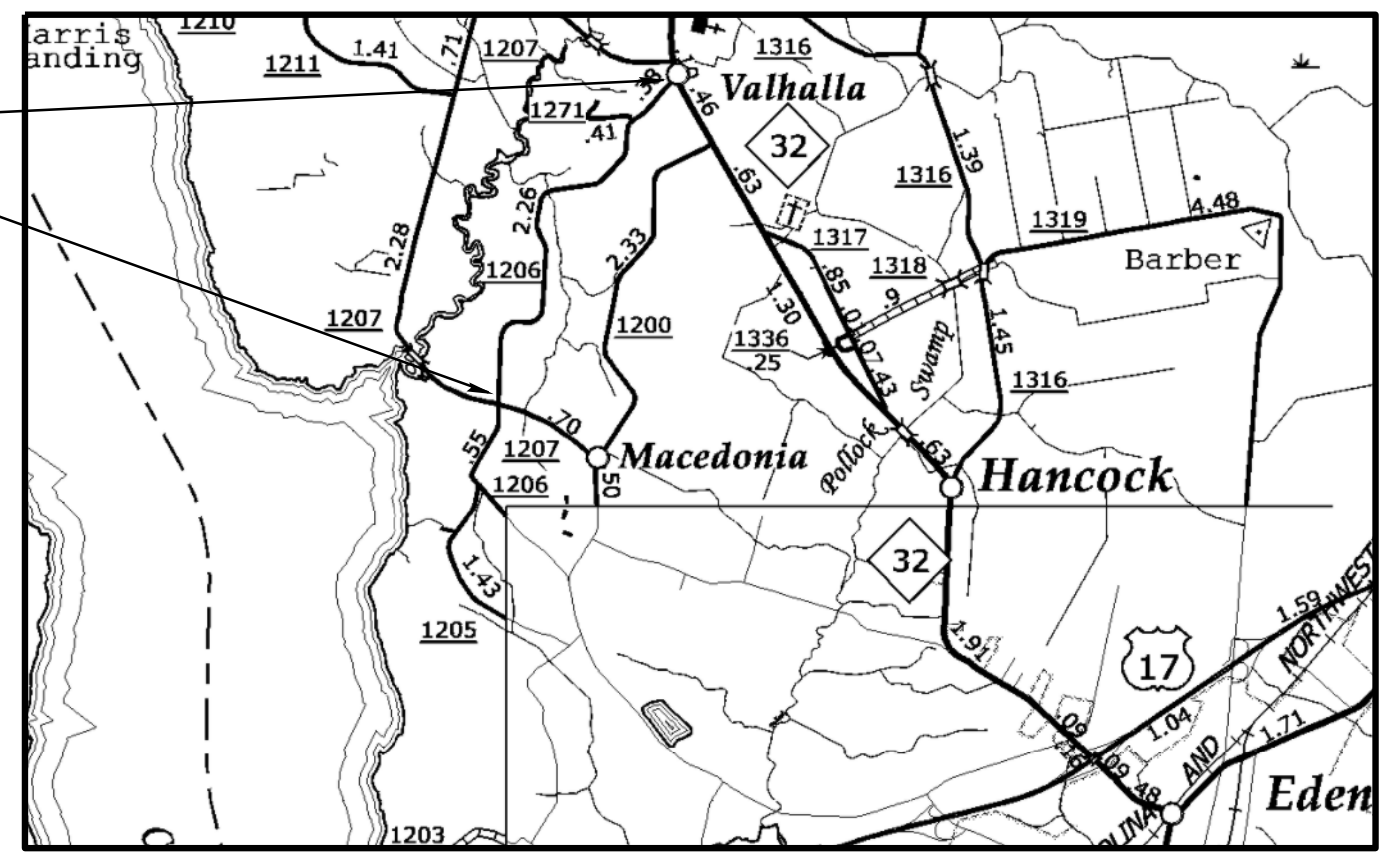
STATE OF NORTH CAROLINA  
 DIVISION OF HIGHWAYS

**CHOWAN COUNTY**

LOCATION: MAP #1 SR 1206 FROM NC 32 TO SR 1207  
 TYPE OF WORK: RESURFACING

STATE	STATE PROJECT REFERENCE NO.	SHEET NO.	TOTAL SHEETS
N.C.	2016CPT.01.08.20211.1, ETC.	1	
STATE PROJ. NO.	F.A. PROJ. NO.	DESCRIPTION	

SR 1206 MAP # 1



NOT TO SCALE

PROJECT LENGTH  
 MAP#1 WBS# 2016CPT.01.08.20211.1 = 2.6 MILES

Prepared In the Office of:  
**DIVISION OF HIGHWAYS**

2012 STANDARD SPECIFICATIONS

LETTING DATE: \_\_\_\_\_

W.B. HOBBS, P.E.  
 DIVISION PROJECT MANAGER

C.E. SLACHTA  
 DIVISION PROPOSALS ENGINEER

DIVISION OF HIGHWAYS  
 STATE OF NORTH CAROLINA

26-OCT-2015 11:48  
 C:\D\CURRENT\PROJECTS\DIVISION PROJECT WORKING FILES\District Three\DA00267 Chowan & Martin Co. Resurfacing (2016 - 2017)\1) Pre-Bid Documents\DA00267\_Plans.dgn  
 cslachta AT DICAD28235L

**CONTRACT NO. : DA00267 WBS NO. : 2016CPT.01.08.20211.1, ETC.**



STATE OF NORTH CAROLINA  
 DIVISION OF HIGHWAYS

**MARTIN COUNTY**

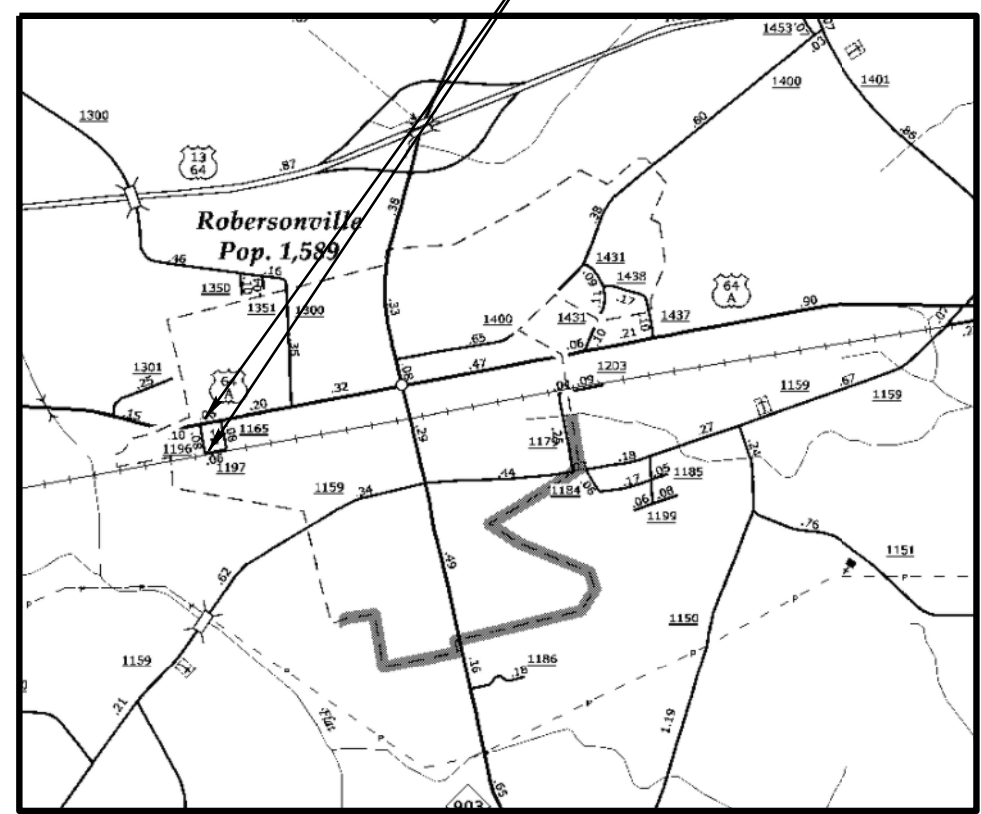
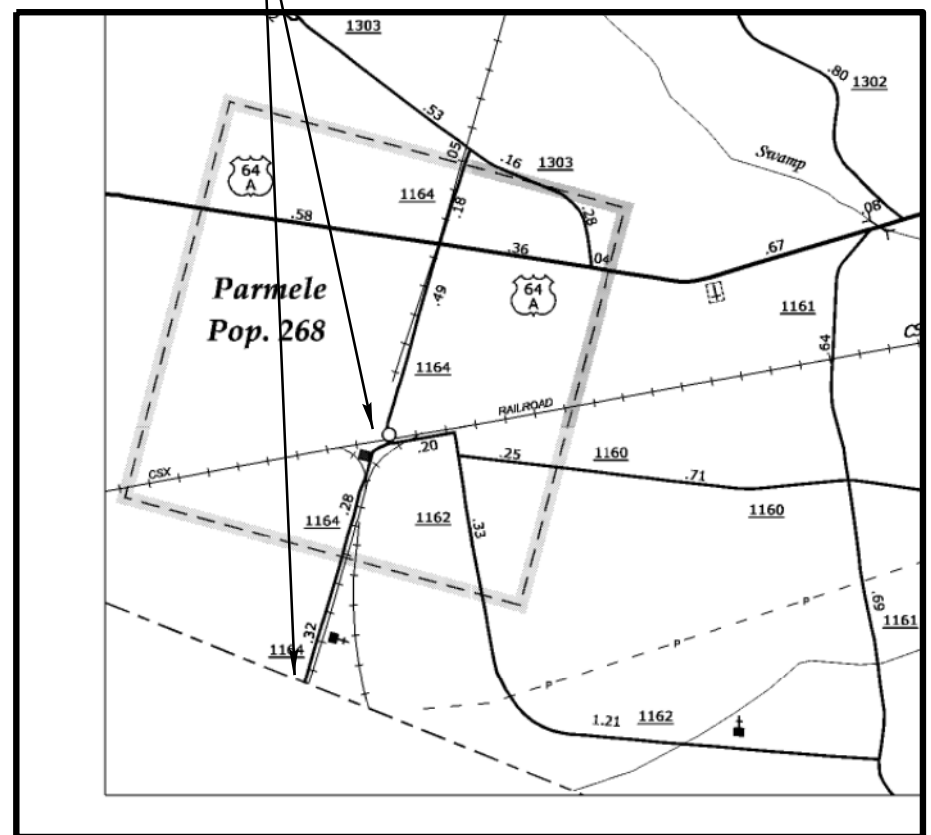
LOCATION: MAP #3 SR 1164 FROM SR 1162 TO COUNTY LINE  
 MAP #4 SR 1196 FROM US 64 ALT. TO SR 1197

STATE	STATE PROJECT REFERENCE NO.	SHEET NO.	TOTAL SHEETS
N.C.	2016CPT.01.08.20211.1, ETC.	3	
STATE PROJ. NO.	F.A. PROJ. NO.	DESCRIPTION	

SR 1164 MAP # 3

TYPE OF WORK: RESURFACING

SR 1196 MAP # 4



NOT TO SCALE

**PROJECT LENGTH**

MAP#3 WBS# 2016CPT.01.08.20581.1 = 0.6 MILES  
 MAP#4 WBS# 2016CPT.01.08.20581.1 = 0.1 MILES

Prepared in the Office of:  
**DIVISION OF HIGHWAYS**

2012 STANDARD SPECIFICATIONS

LETTING DATE: \_\_\_\_\_

W.B. HOBBS, P.E.  
 DIVISION PROJECT MANAGER

C.E. SLACHTA  
 DIVISION PROPOSALS ENGINEER

DIVISION OF HIGHWAYS  
 STATE OF NORTH CAROLINA

26-OCT-2015 11:50  
 C:\D\CURRENT\PROJECTS\DIVISION PROJECT WORKING FILES\District Three\DA00267 Chowan & Martin Co. Resurfacing (2016 - 2017)\Pre-Bid Documents\DA00267\_Plans.dgn  
 cslachta AT DICAD28235L

**CONTRACT NO. : DA00267 WBS NO. : 2016CPT.01.08.20211.1, ETC.**



STATE OF NORTH CAROLINA  
DIVISION OF HIGHWAYS

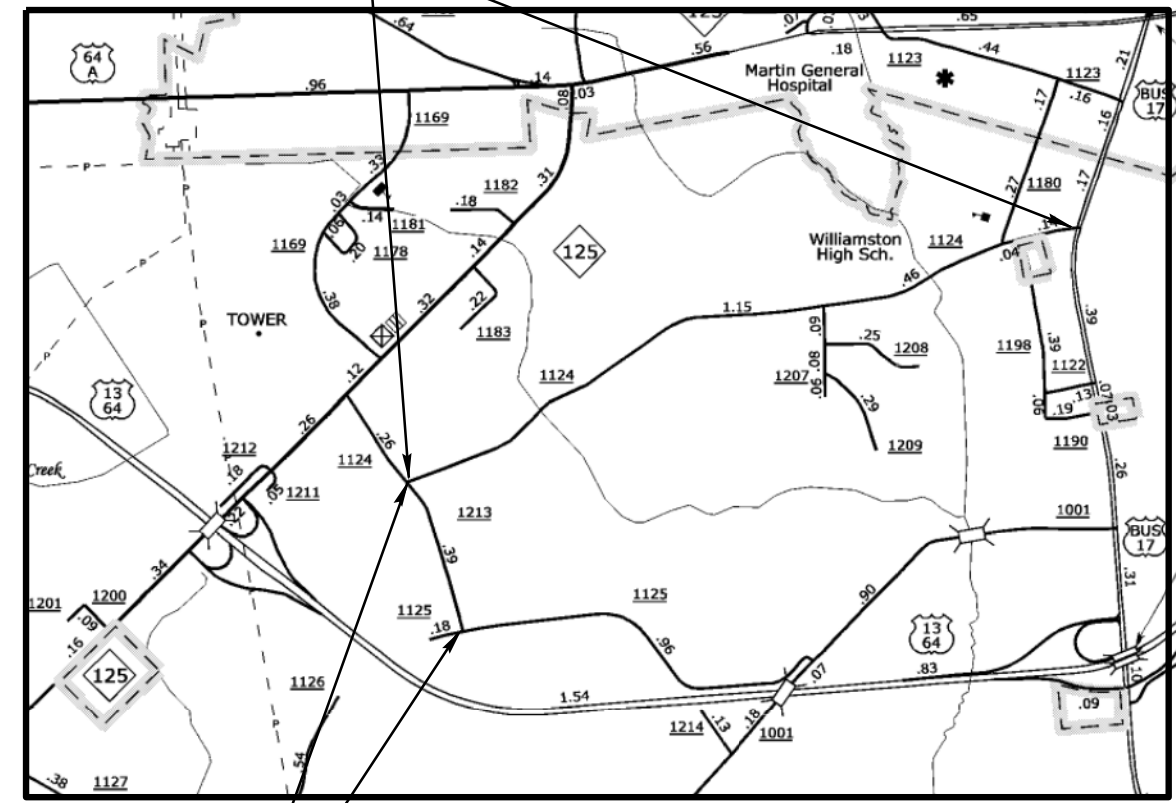
**MARTIN COUNTY**

LOCATION: MAP #5 SR 1124 FROM NC 125 TO US 17 /MAP# 6 SR 1213 FROM SR 1124 TO SR 1125  
MAP #7 SR 1416 FROM NC 125 TO SR 1417

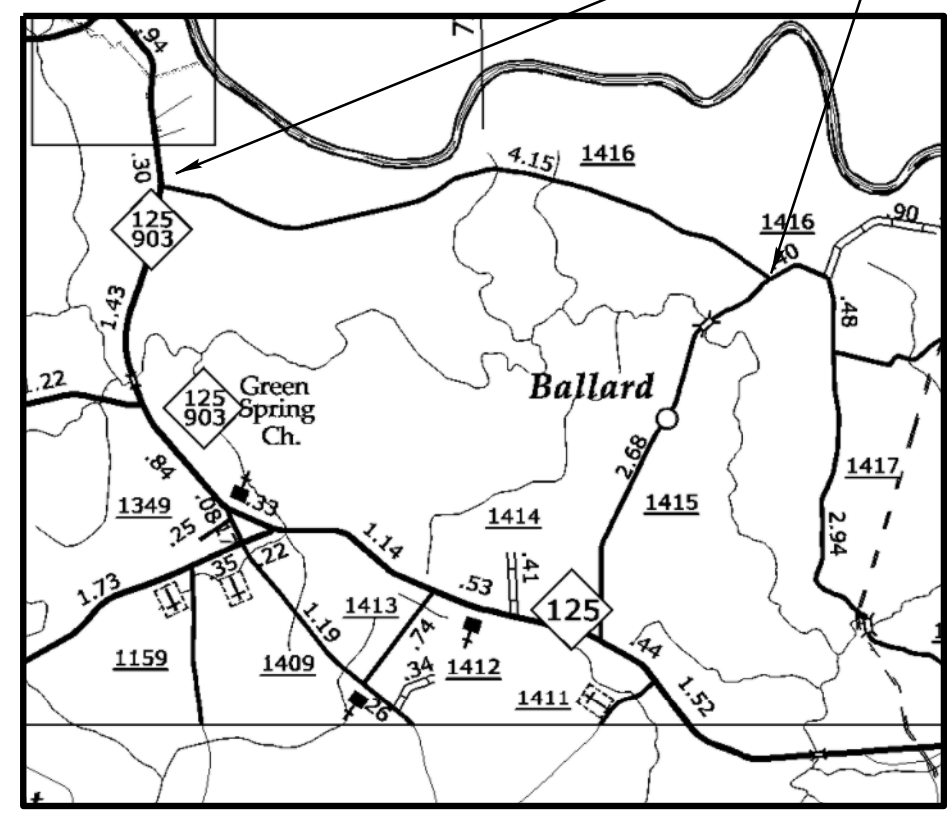
TYPE OF WORK: RESURFACING

STATE	STATE PROJECT REFERENCE NO.	SHEET NO.	TOTAL SHEETS
N.C.	2016CPT.01.08.20211.1, ETC.	4	
STATE PROJ. NO.	F.A. PROJ. NO.	DESCRIPTION	

SR 1124 MAP # 5



SR 1213 MAP # 6



SR 1416 MAP # 7

NOT TO SCALE

PROJECT LENGTH	
MAP#5 WBS# 2016CPT.01.08.20581.1 =	2.10 MILES
MAP#6 WBS# 2016CPT.01.08.20581.1 =	0.40 MILES
MAP#7 WBS# 2016CPT.01.08.20581.1 =	4.55 MILES

Prepared in the Office of:  
**DIVISION OF HIGHWAYS**

2012 STANDARD SPECIFICATIONS  LETTING DATE: _____	W.B. HOBBS, P.E. DIVISION PROJECT MANAGER  C.E. SLACHTA DIVISION PROPOSALS ENGINEER
---------------------------------------------------------	-------------------------------------------------------------------------------------------------

DIVISION OF HIGHWAYS  
STATE OF NORTH CAROLINA

26-OCT-2015 11:51  
 C:\D\CurrentProjects\DIVISION PROJECT WORKING FILES\District Three\DA00267 Chowan & Martin Co. Resurfacing (2016 - 2017)\1) Pre-Bid Documents\DA00267\_Plans.dgn  
 cslachta AT DICAD28235L

**CONTRACT NO. : DA00267 WBS NO. : 2016CPT.01.08.20211.1, ETC.**

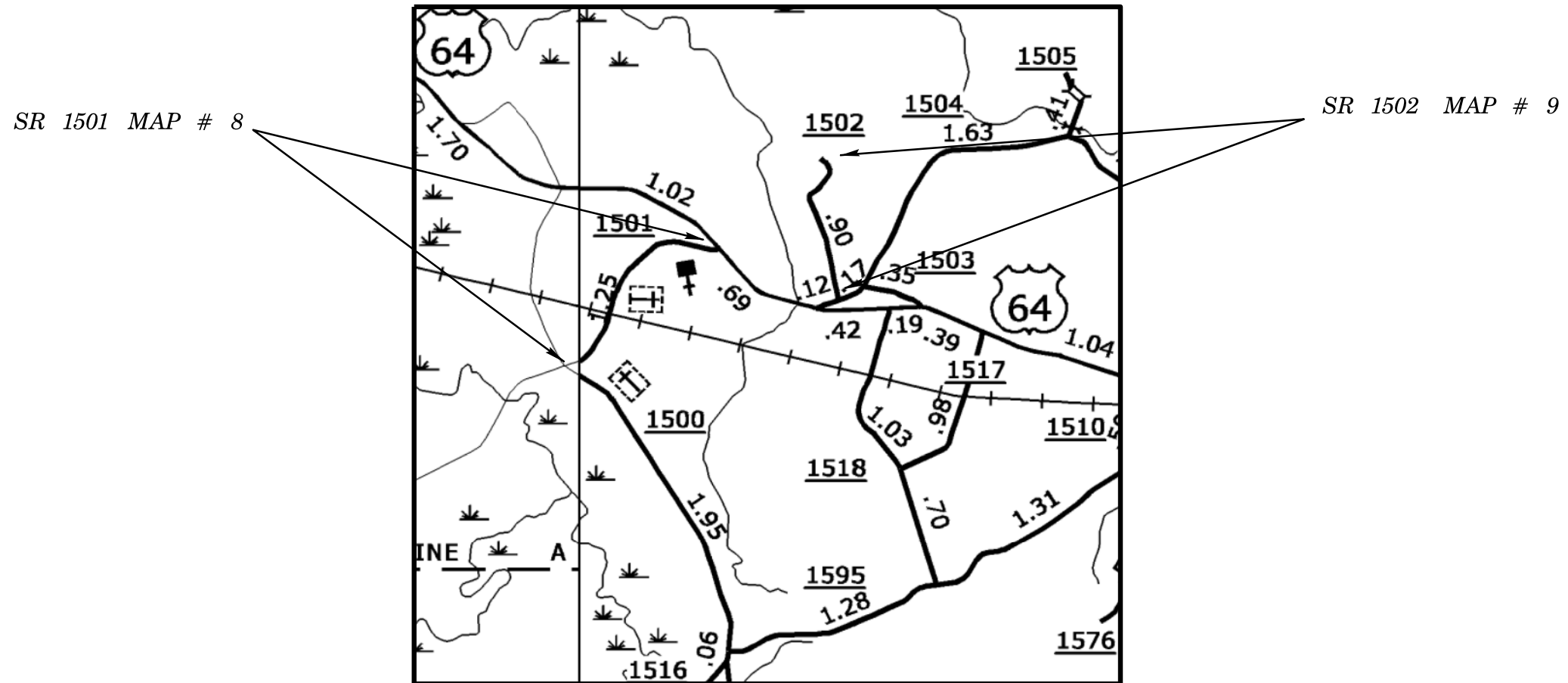


STATE OF NORTH CAROLINA  
 DIVISION OF HIGHWAYS

**MARTIN COUNTY**

STATE	STATE PROJECT REFERENCE NO.	SHEET NO.	TOTAL SHEETS
N.C.	2016CPT.01.08.20211.1, ETC.	5	
STATE PROJ. NO.	F.A. PROJ. NO.	DESCRIPTION	

LOCATION: MAP #8 SR 1501 FROM US 64 TO SR 1500 / MAP #9 SR 1502 FROM SR 1504 TO DEAD END  
 TYPE OF WORK: RESURFACING



NOT TO SCALE

**PROJECT LENGTH**

MAP#8 WBS# 2016CPT.01.08.20581.1 = 1.30 MILES  
 MAP#9 WBS# 2016CPT.01.08.20581.1 = 0.90 MILES

Prepared in the Office of:  
**DIVISION OF HIGHWAYS**

2012 STANDARD SPECIFICATIONS

LETTING DATE: \_\_\_\_\_

W.B. HOBBS, P.E.  
 DIVISION PROJECT MANAGER

C.E. SLACHTA  
 DIVISION PROPOSALS ENGINEER

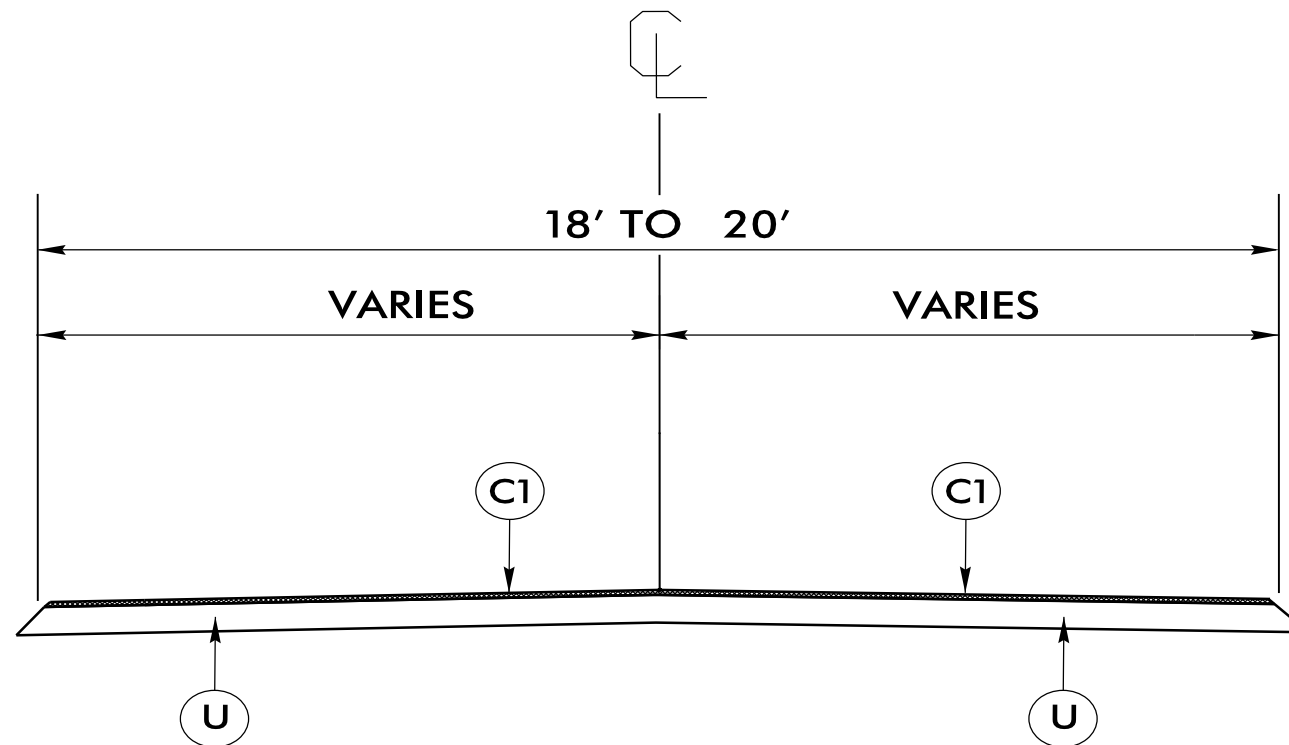
DIVISION OF HIGHWAYS  
 STATE OF NORTH CAROLINA

NOTES:

1. ALL PAVED S.R. ROADS TO BE RESURFACED TO THE ENDS OF THE RADII OR AS DIRECTED BY THE ENGINEER
2. EDGES, PAVEMENT WIDENING, INTERSECTIONS, AND BRIDGE FLARES ARE INCLUDED IN THE TABLE OF QUANTITIES
3. SHOULDERS AND DITCHES ARE TO BE CONSTRUCTED BY OTHERS
4. PAVEMENT MARKINGS TO BE APPLIED BY THE DEPARTMENT

PROJECT REFERENCE NO.	SHEET NO.
2016CPT.01.08.20211.1, ETC.	6

PAVEMENT SCHEDULE	
C1	PROP. APPROX. 1.5" ASPHALT CONCRETE SURFACE COURSE TYPE SF9.5A, AT AN AVERAGE RATE OF 165 LBS. PER SQ.YD.
U	EXISTING PAVEMENT.



***TYPICAL SECTION #1***

USE WITH MAPS 1 - 9

PROJECT NO.	SHEET NO.	TOTAL NO.
2016CPT.01.08.20211.1, ETC.	7	7

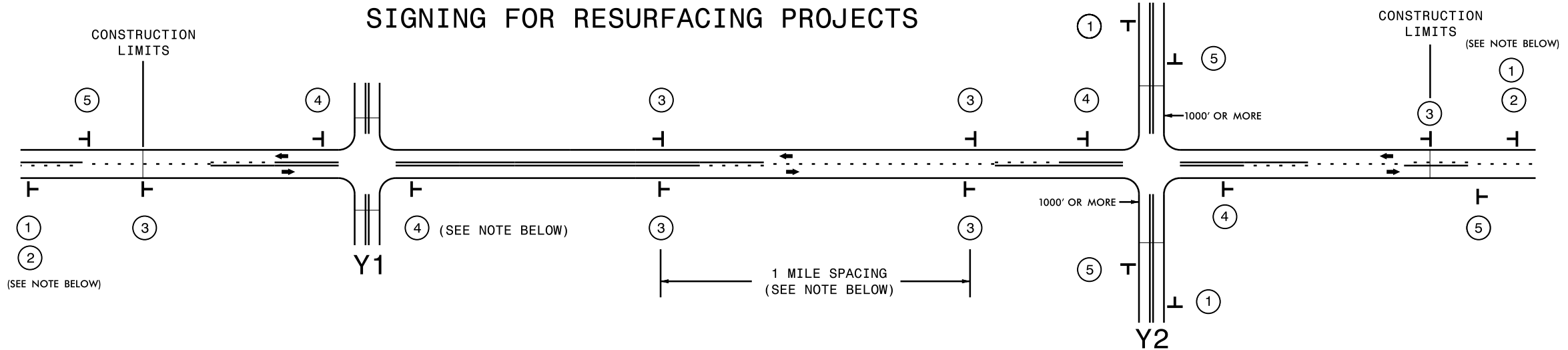
**SUMMARY OF QUANTITIES**

PROJECT	COUNTY	MAP	ROUTE	DESCRIPTION	TYP	LANES	LANE TYPE	FINAL SURFACE TESTING REQUIRED	WARM MIX ASPHALT REQUIRED	LENGTH	WIDTH	MOBILIZATION	SURFACE COURSE, SF9.5A	ASPHALT BINDER FOR PLANT MIX	TEMPORARY TRAFFIC CONTROL
NO		NO			NO					MI	FT	LUMP SUM	TONS	TONS	LUMP SUM
2016CPT.01.08.20211.1	Chowan	1	SR 1206	FROM NC 32 TO SR 1207	1	2	2WU	NO	NO	2.6	18	1	2,509	168	1
2016CPT.01.08.20211.1	Chowan	2	SR 1218	FROM SR 1222 TO SR 1217	1	2	2WU	NO	NO	1.7	20	*	1,821	122	*
2016CPT.01.08.20581.1	Martin	3	SR 1164	FROM SR 1162 TO COUNTY LINE	1	2	2WU	NO	NO	0.6	18	*	579	39	*
2016CPT.01.08.20581.1	Martin	4	SR 1196	FROM US 64 ALT TO SR 1197	1	2	2WU	NO	NO	0.1	18	*	96	6	*
2016CPT.01.08.20581.1	Martin	5	SR 1124	FROM NC 125 TO US 17	1	2	2WU	NO	NO	2.1	20	*	2,250	151	*
2016CPT.01.08.20581.1	Martin	6	SR 1213	FROM SR 1124 TO SR 1125	1	2	2WU	NO	NO	0.4	20	*	429	29	*
2016CPT.01.08.20581.1	Martin	7	SR 1416	FROM NC 125 TO SR 1417	1	2	2WU	NO	NO	4.55	20	*	4,875	327	*
2016CPT.01.08.20581.1	Martin	8	SR 1501	FROM US 64 TO TO SR 1500	1	2	2WU	NO	NO	1.3	20	*	1,393	93	*
2016CPT.01.08.20581.1	Martin	9	SR 1502	FROM SR 1504 TO DEAD END	1	2	2WU	NO	NO	0.9	18	*	868	58	*
<b>GRAND TOTAL</b>										<b>14.25</b>		<b>1</b>	<b>14,820</b>	<b>993</b>	<b>1</b>





# SIGNING FOR RESURFACING PROJECTS



LEGEND	
	STATIONARY SIGN
	DIRECTION OF TRAFFIC FLOW

## MAINLINE (-L-) SIGNING

## -Y- LINE SIGNING

SIGNING NOTES AND PLACEMENT PER DIRECTION	1	2	3	4	5		
						<p>NO REQUIRED STATIONARY SIGNING FOR THE FOLLOWING -Y- LINE CONDITIONS:</p> <ol style="list-style-type: none"> <li>1) LESS THAN 1000' OF RESURFACING ALONG -Y- LINE</li> <li>2) SUBDIVISION ROADS</li> <li>3) DEAD END ROADS</li> </ol> <p>WHEN PAVING/CONSTRUCTION ACTIVITIES PROCEED ACROSS AN UNSIGNED -Y- LINE, ADVANCE WARNING PORTABLE SIGNS SHALL BE USED ALONG THE -Y- LINE AS SHOWN BELOW. REMOVE UPON COMPLETION OF WORK.</p> <div style="display: flex; justify-content: space-around;"> </div> <p>PLACED 500' IN ADVANCE OF FLAGGER. PLACED 250' IN ADVANCE OF FLAGGER.</p>	
	<p>PLACE 1000' PRIOR TO BEGINNING OF CONSTRUCTION LIMITS. ONLY USED ON -Y- LINES IF RESURFACING LIMITS EXTEND 1000' ALONG -Y- LINE.</p>		<p>PLACE INITIALLY AT THE CONSTRUCTION LIMITS AND SPACED 1 MILE APART THEREAFTER. IF NO -Y- LINES EXIST, PLACE 2ND SET 1/2 MILE FROM THE CONSTRUCTION LIMITS AND THEN SPACE 1 MILE THEREAFTER.</p>		<p>THESE ARE FOR -Y- LINES THAT ARE "THROUGH" ROADWAYS. DEAD END AND SUBDIVISION ROADS ARE NOT "THROUGH" ROADWAYS. INSTALL 500' +/- FROM EACH -Y- LINE APPROACH AS SHOWN ABOVE. FOR MULTIPLE -Y- LINES THAT ARE SEPARATED BY 0.25 MILES OR LESS, TREAT AS A SINGLE UNIT AND INSTALL WITHIN 500' OF EACH APPROACH. A MAXIMUM OF 2 SIGN SETS PER MILE. DO NOT INSTALL WHEN -Y- LINES ARE WITHIN 0.5 MILES FROM "END ROAD WORK" SIGN.</p>		
	<p>#2 SIGN ONLY USED WHEN RESURFACING LIMITS ARE 2 OR MORE MILES IN LENGTH. ROUND UP TO NEXT WHOLE NUMBER. (NO FRACTIONAL OR DECIMAL NUMBERS)</p>		<p>PLACE 500' FOLLOWING THE END OF CONSTRUCTION LIMITS.</p>				

09/FEB/2015 07:52 D:\cadd\2649\1\101511\resurfacing\Plans\Resurfacing\_AdvWarn\_2Ln.dgn D:\cadd\2649\1\101511\resurfacing\Plans\Resurfacing\_AdvWarn\_2Ln.dgn



RESURFACING ADVANCE WARNING SIGNS FOR RURAL AND SUBURBAN 2 LANE ROADWAYS