

09/08/99

CONTRACT NO.: DA00178 WBS ELEMENT: ICR.10281.23, ETC.

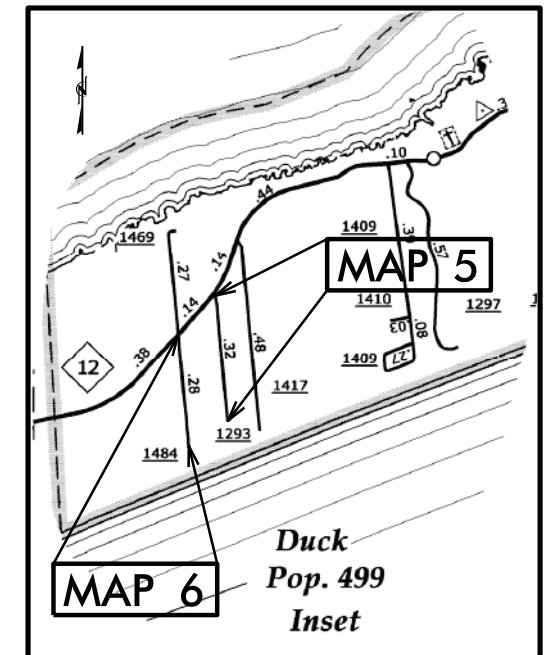
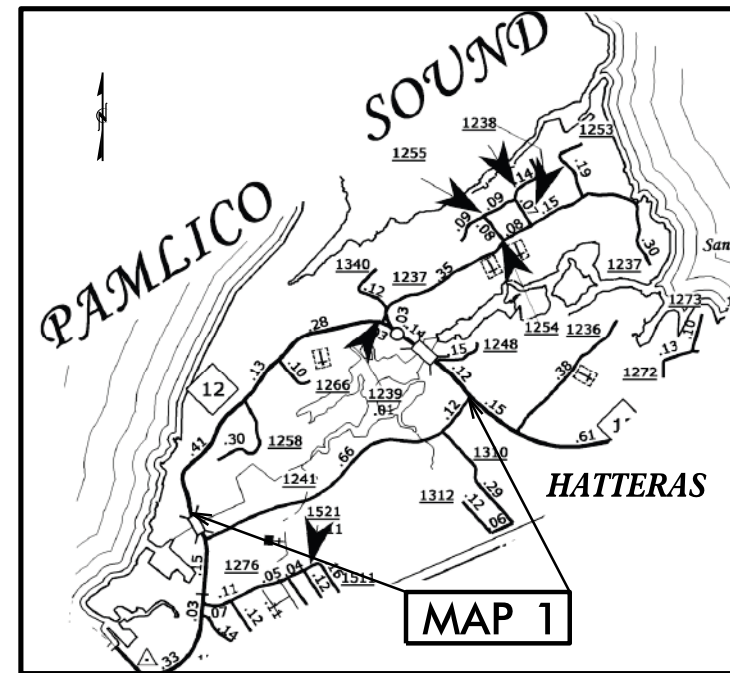
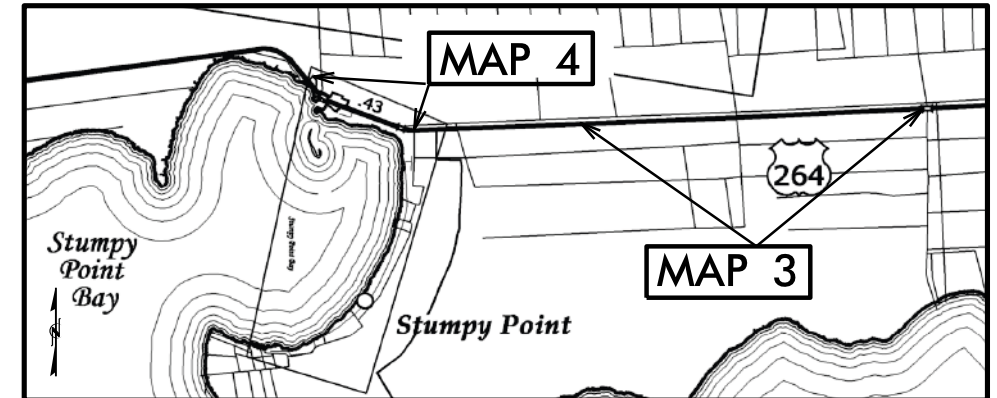
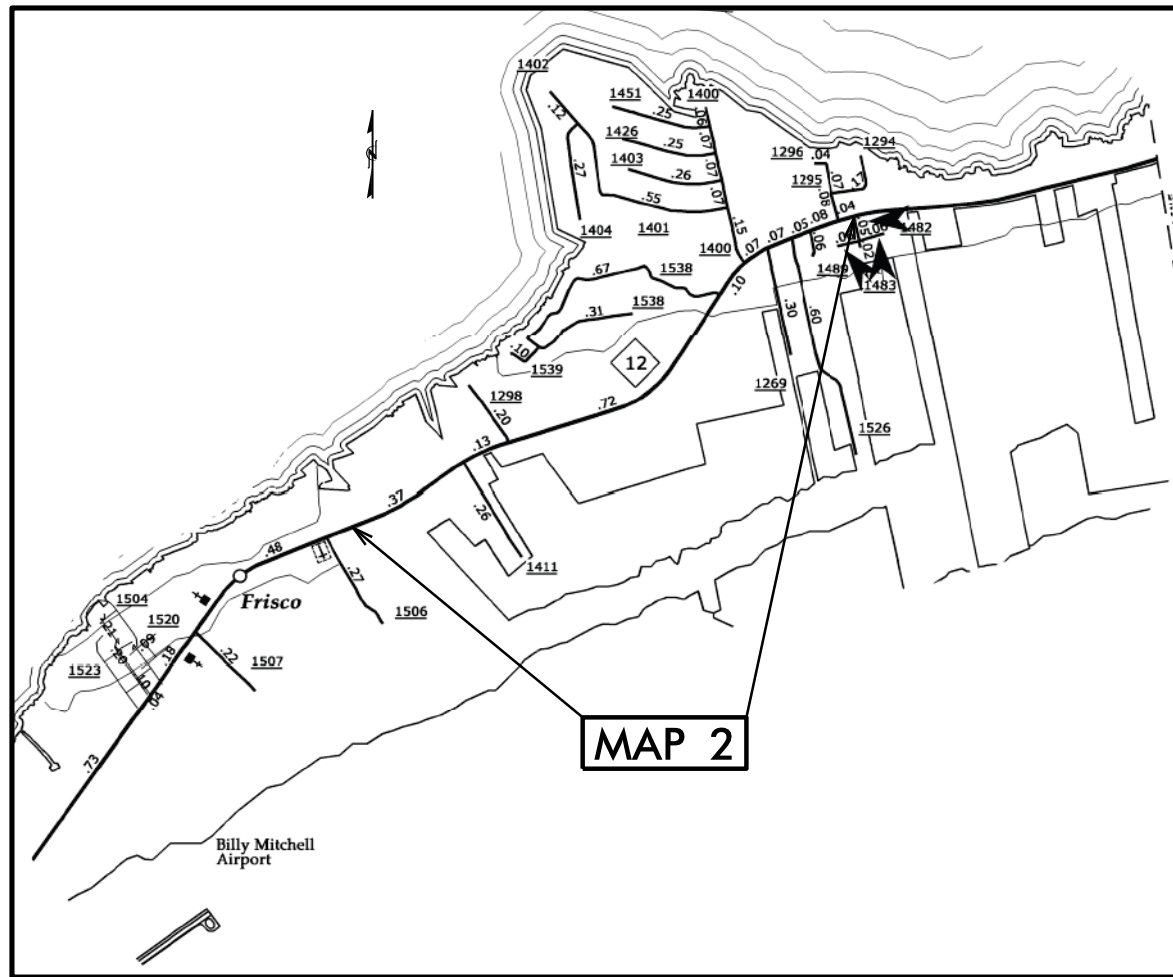
STATE OF NORTH CAROLINA
DIVISION OF HIGHWAYS

DARE COUNTY

LOCATION: MAP 1 NC 12 FROM SR 1241 TO BRIDGE
MAP 2 NC 12 FROM SR 1482 TO OLD LANDING RD.
MAP 3 US 264 FROM BRIDGE #16 SOUTH 1.5 MILES
MAP 4 US 264 FROM CHANGE OF PAVEMENT AT SR 1100 TO BRIDGE 13
MAP 5 SR 1293 (SEABREEZE DRIVE IN DUCK) FROM NC 12 TO DEAD END
MAP 6 SR 1484 (SEAHAWK DR. IN DUCK) FROM NC 12 TO DEAD END

TYPE OF WORK: RESURFACING & PAVEMENT MARKINGS

| STATE | STATE PROJECT REFERENCE NO. | SHEET NO. | TOTAL SHEETS |
|----------------|-----------------------------|-------------|--------------|
| N.C. | ICR.10281.23,ETC. | 1 | 8 |
| STATE PROJ.NO. | F.A.PROJ.NO. | DESCRIPTION | |
| ICR.10281.23 | | MAP 1 | |
| ICR.10281.24 | | MAP 2 | |
| ICR.10281.25 | | MAP 3 | |
| ICR.10281.26 | | MAP 4 | |
| ICR.20281.95 | | MAP 5 | |
| ICR.20281.96 | | MAP 6 | |



NTS

PROJECT LENGTH

LENGTH OF ROADWAY PROJECT MAP 1 = 1.07 MI.
 LENGTH OF ROADWAY PROJECT MAP 2 = 1.60 MI.
 LENGTH OF ROADWAY PROJECT MAP 3 = 1.50 MI.
 LENGTH OF ROADWAY PROJECT MAP 4 = 0.64 MI.
 LENGTH OF ROADWAY PROJECT MAP 5 = 0.32 MI.
 LENGTH OF ROADWAY PROJECT MAP 6 = 0.29 MI.

Prepared in the Office of:
DIVISION OF HIGHWAYS

113 Airport Dr., Edenton NC, 27932

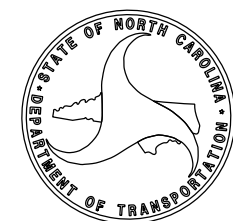
2012 STANDARD SPECIFICATIONS

LETTING DATE:

W.B. HOBBS, P.E.
DIVISION PROJECT MANAGER

C.E. SLACHTA
DIVISION PROPOSALS ENGINEER

DIVISION OF HIGHWAYS
STATE OF NORTH CAROLINA



09/08/99

CONTRACT NO.: DA00178 WBS ELEMENT:ICR.10281.23 , ETC.

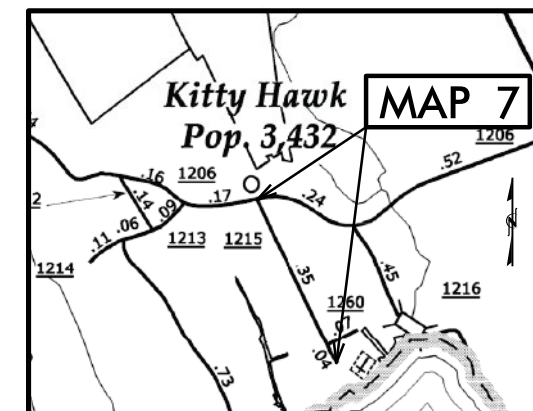
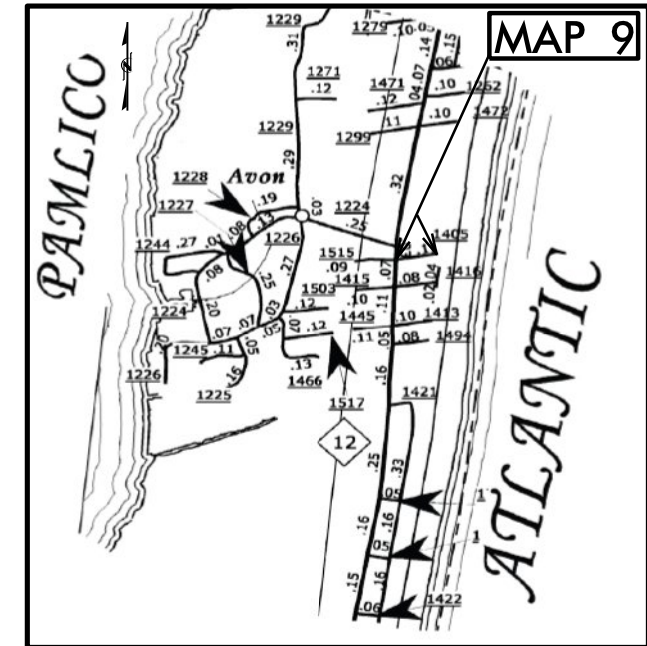
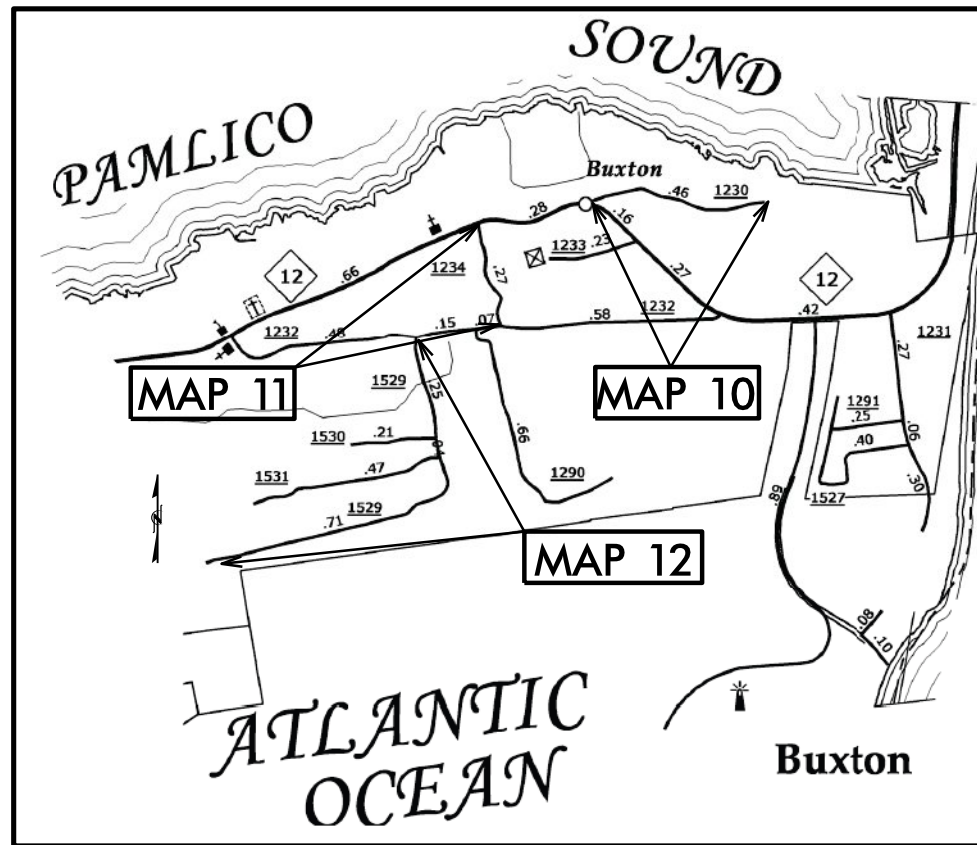
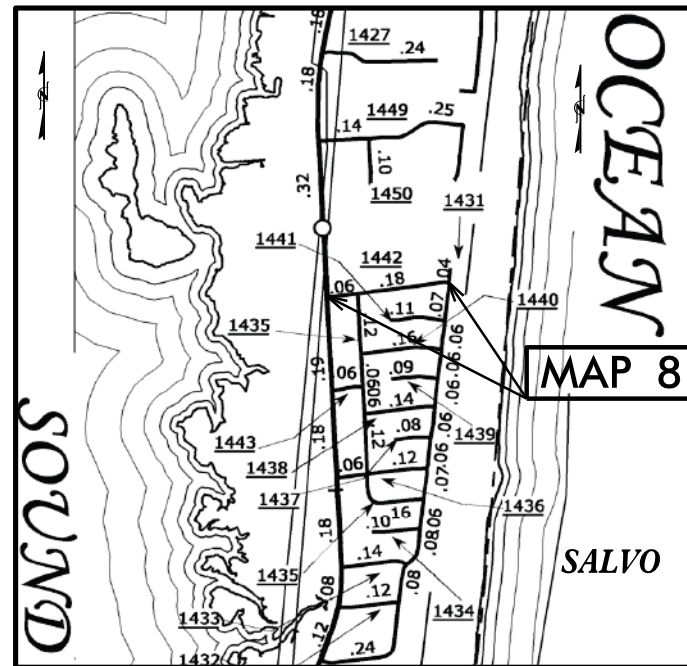
STATE OF NORTH CAROLINA
DIVISION OF HIGHWAYS

DARE COUNTY

| STATE | STATE PROJECT REFERENCE NO. | SHEET NO. | TOTAL SHEETS |
|----------------|-----------------------------|-------------|--------------|
| N.C. | ICR.10281.23,ETC. | 2 | 8 |
| STATE PROJ.NO. | F.A.PROJ.NO. | DESCRIPTION | |
| 1CR.20281.97 | | MAP 7 | |
| 1CR.20281.98 | | MAP 8 | |
| 1CR.20281.99 | | MAP 9 | |
| 1CR.20281.100 | | MAP 10 | |
| 1CR.20281.101 | | MAP 11 | |
| 1CR.20281.102 | | MAP 12 | |

LOCATION: MAP 7 SR 1215 (BAUM LANDING RD. IN KITTY HAWK) FROM SR 1206 TO DEAD END
 MAP 8 SR 1442 (RAMPART ST. IN SALVO) FROM NC 12 TO SR 1431
 MAP 9 SR 1405 (SUNFISH COURT IN AVON) FROM NC 12 TO DEAD END
 MAP 10 SR 1230 (ROCKY ROLINSON RD. IN BUXTON) FROM NC 12 TO DEAD END
 MAP 11 SR 1234 (CROSS RD. IN BUXTON) FROM NC 12 TO SR 1232
 MAP 12 SR 1529 (LOST TREE TRAIL) FROM SR 1232 TO DEAD END

TYPE OF WORK: RESURFACING & PAVEMENT MARKINGS



NTS

PROJECT LENGTH

| | | |
|----------------------------------|---|----------|
| LENGTH OF ROADWAY PROJECT MAP 7 | = | 0.37 MI. |
| LENGTH OF ROADWAY PROJECT MAP 8 | = | 0.24 MI. |
| LENGTH OF ROADWAY PROJECT MAP 9 | = | 0.11 MI. |
| LENGTH OF ROADWAY PROJECT MAP 10 | = | 0.39 MI. |
| LENGTH OF ROADWAY PROJECT MAP 11 | = | 0.25 MI. |
| LENGTH OF ROADWAY PROJECT MAP 12 | = | 1.00 MI. |

Prepared in the Office of:
DIVISION OF HIGHWAYS
113 Airport Dr., Edenton NC, 27932

2012 STANDARD SPECIFICATIONS

LETTING DATE: _____

W.B. HOBBS, P.E.
DIVISION PROJECT MANAGER

C.E. SLACHTA
DIVISION PROPOSALS ENGINEER

DIVISION OF HIGHWAYS
STATE OF NORTH CAROLINA

C O N T R A C T P A V E M E N T S C H E D U L E

| | |
|----|---|
| C1 | PROP. APPROX. 1½" ASPHALT CONCRETE SURFACE COURSE, TYPE S9.5B, AT AN AVERAGE RATE OF 168 LBS. PER SQ. YD. |
| C2 | PROP. APPROX. 1½" ASPHALT CONCRETE SURFACE COURSE, TYPE SF9.5A, AT AN AVERAGE RATE OF 165 LBS. PER SQ. YD. |
| T | EARTH MATERIAL |
| U | EXISTING PAVEMENT |
| V1 | MILLING BITUMINOUS PAVEMENT. 1½" DEPTH |

22-OCT-2013 12:45
 E:\District1\ paving_Maps\2013\Draw\Winter_2013\drawpave007\drawpave007\007.LS.aln-pavemap.dgn
 11/11/2013 12:45

PAVEMENT SCHEDULE

| | |
|----|---|
| C1 | PROP. APPROX. 1½" ASPHALT CONCRETE SURFACE COURSE, TYPE S9.5B, AT AN AVERAGE RATE OF 168 LBS. PER SQ. YD. |
| T | EARTH MATERIAL |
| U | EXISTING PAVEMENT. |
| V1 | MILLING BITUMINOUS PAVEMENT. 1½"DEPTH. |

| | |
|-----------------------|-----------|
| PROJECT REFERENCE NO. | SHEET NO. |
| 1CR.10281.23, ETC. | 4 |

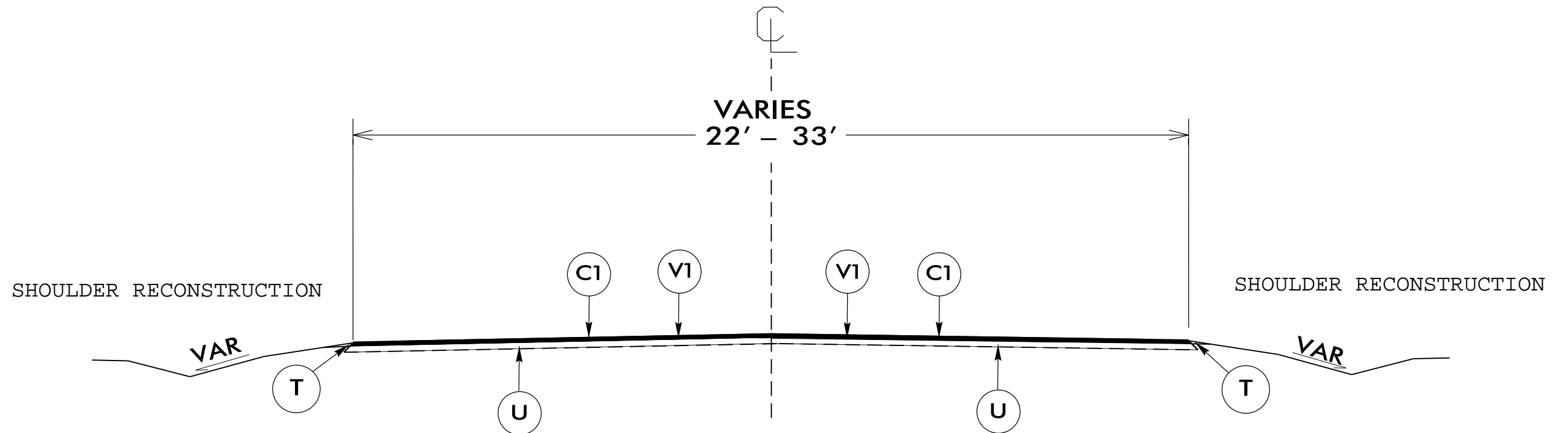
NOTES:

*ALL PAVED S.R. ROADS TO BE RESURFACED TO THE ENDS OF THE RADII., OR AS DIRECTED BY THE ENGINEER

*EDGES, PAVEMENT WIDENING, INTERSECTIONS, AND BRIDGE FLARES ARE INCLUDED IN THE TABLE OF QUANTITIES

*PAVEMENT EDGE SLOPES ARE 1:1 UNLESS SHOWN OTHERWISE

When resurfacing Map #4 the contractor is also required to pave the road into the Emergency Ferry Docks including the stacking lanes and ramp. These quantities are accounted for within the Summary of Quantities for this Map.

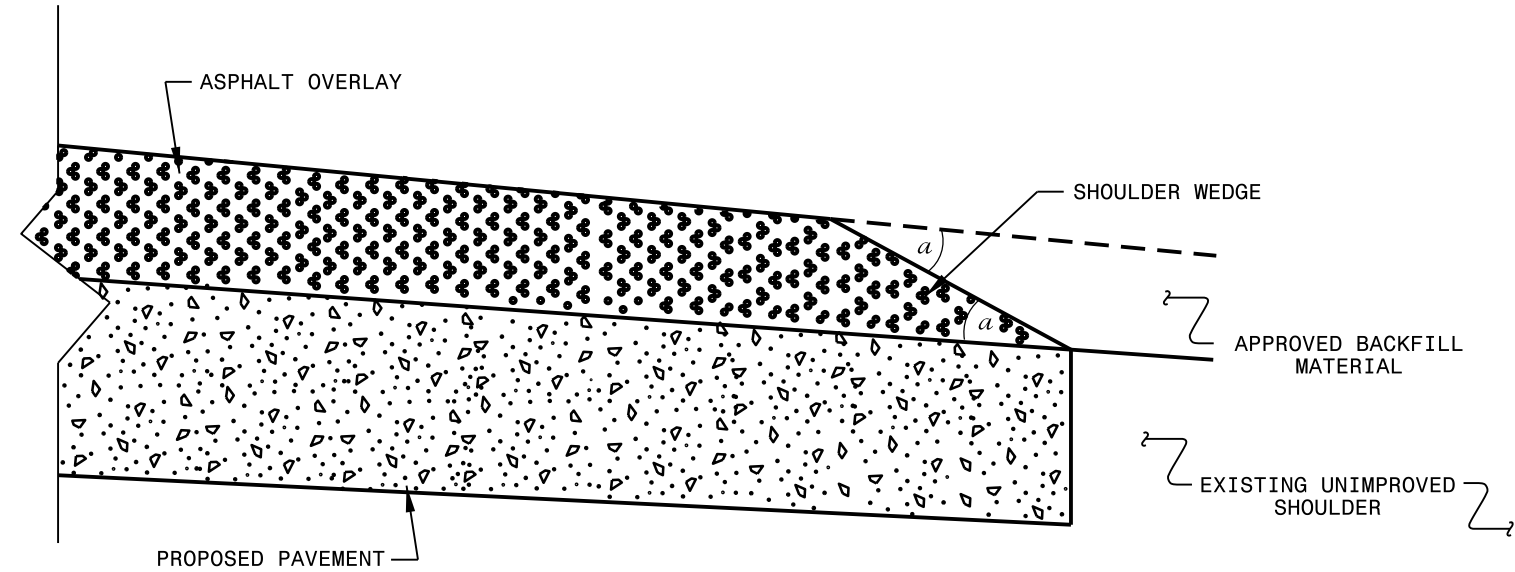


TYPICAL SECTION NO. 1

USE WITH MAP 1,2,3,4

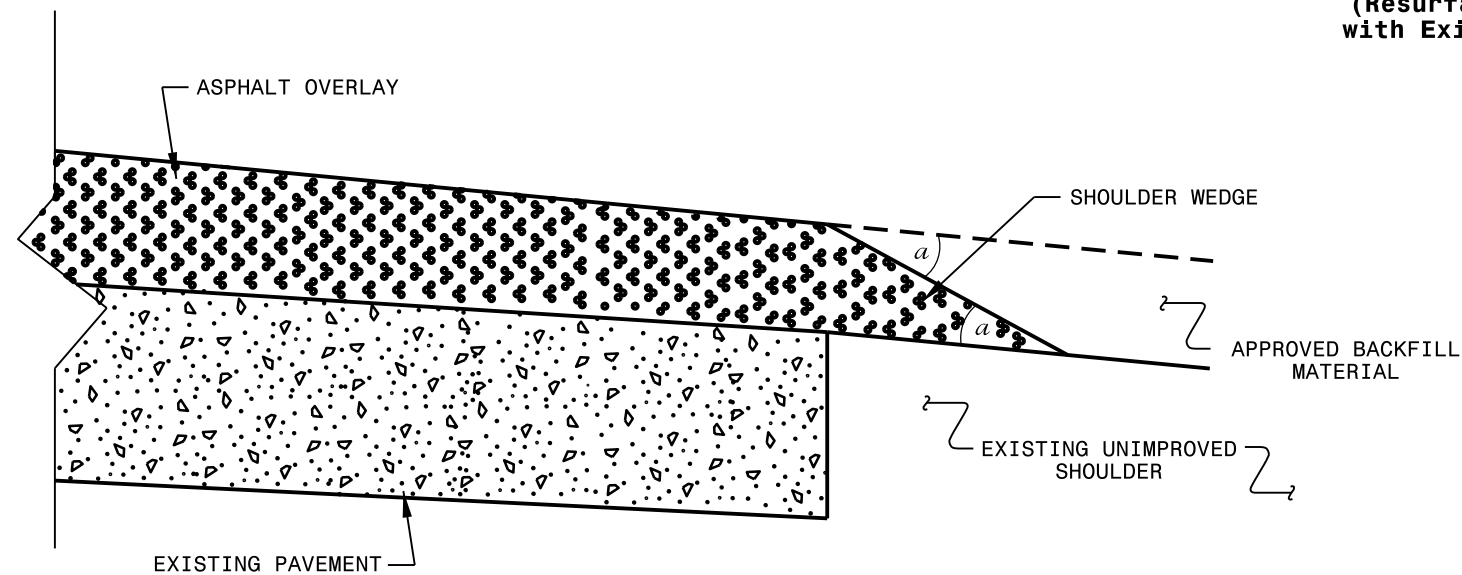
NTS

22-OCT-2013 12:46
 E:\District1\Planning\Map3\2013\Draw\Winter\2013\Draw\pave\007\007.LS.aln_pavemap.dgn
 11/14/13 4:31



SHOULDER WEDGE DETAIL

(Resurfacing Projects w/ Widening or with Existing Paved Shoulder > 2 ft.)



SHOULDER WEDGE DETAIL

(Resurfacing Projects w/ NO Widening)

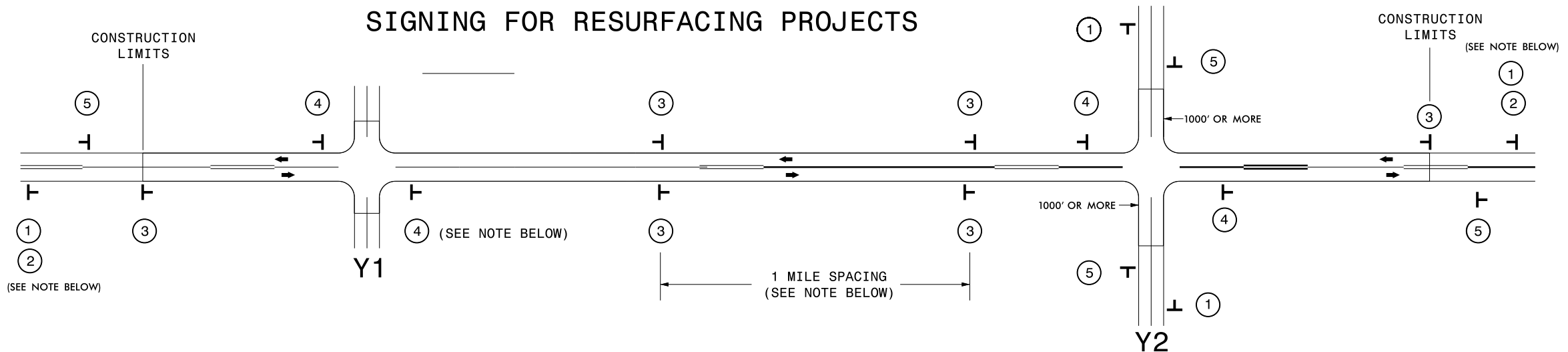
NOTES:

- 1) DETAIL DOES NOT APPLY TO OGAFB AND ULTRA-THIN BONDED WEARING COURSE.
- 2) BACKFILL SHOULDER WITH APPROVED MATERIAL.
- 3) THE SHOULDER WEDGE DEVICE MAY BE DISENGAGED AT PAVED DRIVEWAYS AND SIDE STREETS.

a - SHOULDER WEDGE ANGLE = 30°

| | |
|--|------------------|
| CONTRACT STANDARDS AND DEVELOPMENT UNIT | |
| Office 919-707-6950 | FAX 919-250-4119 |
| SHOULDER WEDGE DETAILS | |
| ORIGINAL BY: T.SPELL | DATE: 7-19-11 |
| MODIFIED BY: | DATE: 10/16/12 |
| CHECKED BY: | DATE: |
| FILE SPEC.: s:\usr\details\stand\shoulderwedgedetail.dgn | |

SIGNING FOR RESURFACING PROJECTS



| LEGEND | |
|--------|---------------------------|
| T | STATIONARY SIGN |
| ← | DIRECTION OF TRAFFIC FLOW |

MAINLINE (-L-) SIGNING

-Y- LINE SIGNING

| SIGNING NOTES AND PLACEMENT PER DIRECTION | | |
|--|--|--|
| <div style="display: flex; flex-direction: column; align-items: center;"> <div style="border: 1px solid black; padding: 2px; margin-bottom: 5px;">①</div> <div style="border: 1px solid black; padding: 2px; margin-bottom: 5px;">②</div> </div> | | <p>PLACE 1000' PRIOR TO BEGINNING OF CONSTRUCTION LIMITS. ONLY USED ON -Y- LINES IF RESURFACING LIMITS EXTEND 1000' ALONG -Y- LINE.</p> <p>#2 SIGN ONLY USED WHEN RESURFACING LIMITS ARE 2 OR MORE MILES IN LENGTH. ROUND UP TO NEXT WHOLE NUMBER. (NO FRACTIONAL OR DECIMAL NUMBERS)</p> |
| <div style="border: 1px solid black; padding: 2px; margin-bottom: 5px;">③</div> | | <p>PLACE INITIALLY AT THE CONSTRUCTION LIMITS AND SPACED 1 MILE APART THEREAFTER. IF NO -Y- LINES EXIST, PLACE 2ND SET 1/2 MILE FROM THE CONSTRUCTION LIMITS AND THEN SPACE 1 MILE THEREAFTER.</p> |
| <div style="border: 1px solid black; padding: 2px; margin-bottom: 5px;">④</div> | | <p>THESE ARE FOR -Y- LINES THAT ARE "THROUGH" ROADWAYS. DEAD END AND SUBDIVISION ROADS ARE NOT "THROUGH" ROADWAYS. INSTALL 500' +/- FROM EACH -Y- LINE APPROACH AS SHOWN ABOVE. FOR MULTIPLE -Y- LINES THAT ARE SEPARATED BY 0.25 MILES OR LESS, TREAT AS A SINGLE UNIT AND INSTALL WITHIN 500' OF EACH APPROACH. A MAXIMUM OF 2 SIGN SETS PER MILE. DO NOT INSTALL WHEN -Y- LINES ARE WITHIN 0.5 MILES FROM "END ROAD WORK" SIGN.</p> |
| <div style="border: 1px solid black; padding: 2px; margin-bottom: 5px;">⑤</div> | | <p>PLACE 500' FOLLOWING THE END OF CONSTRUCTION LIMITS.</p> |

NO REQUIRED STATIONARY SIGNING FOR THE FOLLOWING -Y- LINE CONDITIONS:

- 1) LESS THAN 1000' OF RESURFACING ALONG -Y- LINE
- 2) SUBDIVISION ROADS
- 3) DEAD END ROADS

WHEN PAVING/CONSTRUCTION ACTIVITIES PROCEED ACROSS AN UNSIGNED -Y- LINE, ADVANCE WARNING PORTABLE SIGNS SHALL BE USED ALONG THE -Y- LINE AS SHOWN BELOW. REMOVE UPON COMPLETION OF WORK.



PLACED 500' IN ADVANCE OF FLAGGER. PLACED 250' IN ADVANCE OF FLAGGER.

25-OCT-2013 12:51
 E:\district\IT\DCAD\264931
 DWGSS - AT - DICAD264931
 2013\darepave007\darrepave007\007_LL.din_pavemap.dgn



**RESURFACING
 ADVANCE WARNING SIGNS
 FOR
 RURAL AND SUBURBAN
 2 LANE ROADWAYS**

| PROJECT NO. | SHEET NO. | TOTAL NO. |
|--------------------|-----------|-----------|
| 1CR.10281.23, ETC. | 8 | 8 |

SUMMARY OF QUANTITIES

| PROJECT NO | COUNTY | MAP NO | ROUTE | DESCRIPTION | TYP NO | LANES | LANE TYPE | FINAL SURFACE TESTING REQUIRED | WARM MIX ASPHALT REQUIRED | LENGTH MI | WIDTH FT | MOBILIZATION LS | BORROW CY | INCIDENTAL STONE BASE TON | SHOULDER RECONSTRUCTION SMI | 1 1/2" MILLING SY | SURFACE COURSE, S9.5B TON | SURFACE COURSE, SF9.5A TON | ASPHALT BINDER FOR PLANT MIX TON | TEMPORARY SILT FENCE LF | SEEDING & MULCHING ACR | TEMPORARY TRAFFIC CONTROL LS | WORK ZONE SIGNS (STATIONARY) SF | 4" WHITE PAINT LF | 4" YELLOW PAINT LF |
|--------------------|--------|--------|----------------------------------|--|--------|-------|-----------|--------------------------------|---------------------------|-----------|----------|-----------------|-----------|---------------------------|-----------------------------|-------------------|---------------------------|----------------------------|----------------------------------|-------------------------|------------------------|------------------------------|---------------------------------|-------------------|--------------------|
| 1CR.10281.23 | Dare | 1 | NC 12 | FROM SR 1241, EAGLE PASS TO BRIDGE | 1 | 2 | 2WU | NO | NO | 1.07 | 33 | 1 | 200 | 15 | 1.00 | 20,715 | 1,807 | | 108 | 100 | 0.2 | 1 | 80 | 11,304 | 11,304 |
| 1CR.10281.24 | Dare | 2 | NC 12 | FROM SR 1482, SOUTH BUCANEER, TO OLD LANDING | 1 | 2 | 2WU | NO | NO | 1.60 | 32 | * | 600 | 20 | 3.20 | 30,037 | 2,583 | | 155 | 100 | 0.4 | * | 80 | 16,900 | 13,450 |
| 1CR.10281.25 | Dare | 3 | US 264 | POINT PETER BRIDGE #16 TO NAVY SHELL ROAD | 1 | 2 | 2WU | NO | NO | 1.50 | 22 | * | 600 | | 3.00 | 19,800 | 1,672 | | 100 | 200 | 2.0 | * | 80 | 32,280 | 19,800 |
| 1CR.10281.26 | Dare | 4 | US 264 | FROM COP AT SR 1100 TO BRIDGE 13 | 1 | 2 | 2WU | NO | NO | 0.64 | 22 | * | 300 | 50 | 1.58 | 8,448 | 1,089 | | 65 | 400 | 1.0 | * | 80 | 13,773 | 8,448 |
| 1CR.20281.95 | Dare | 5 | SR 1293 SEABREEZE DRIVE | FROM NC 12 TO DEAD END | 2 | 2 | 2WU | NO | NO | 0.32 | 20 | * | 100 | 1 | 0.63 | | | 392 | 26 | | 0.4 | * | | | |
| 1CR.20281.96 | Dare | 6 | SR 1484 SEAHAWK DR | FROM NC 12 TO DEAD END | 2 | 2 | 2WU | NO | NO | 0.29 | 20 | * | 50 | 1 | 0.58 | | | 302 | 20 | | 0.4 | * | | | |
| 1CR.20281.97 | Dare | 7 | SR 1215 BAUM LANDING RD | FROM SR 1206 TO DEAD END | 2 | 2 | 2WU | NO | NO | 0.37 | 18 | * | 100 | 2 | 0.75 | | | 325 | 22 | | 0.5 | * | | | |
| 1CR.20281.98 | Dare | 8 | SR 1442 RAMPART ST | FROM NC 12 TO SR 1431 | 2 | 2 | 2WU | NO | NO | 0.24 | 20 | * | 50 | 1 | 0.48 | | | 257 | 17 | | 0.3 | * | | | |
| 1CR.20281.99 | Dare | 9 | SR 1405 SUNFISH COURT IN AVON | FROM NC 12 TO DEAD END | 2 | 2 | 2WU | NO | NO | 0.11 | 16 | * | 22 | 1 | 0.22 | | | 94 | 6 | | 0.2 | * | | | |
| 1CR.20281.100 | Dare | 10 | SR 1230 ROCKY ROLLISON IN BUXTON | FROM NC 12 TO DEAD END | 2 | 2 | 2WU | NO | NO | 0.39 | 18 | * | 160 | 10 | 0.78 | | | 342 | 23 | | 0.5 | * | | | |
| 1CR.20281.101 | Dare | 11 | SR 1234 CROSS ROAD IN BUXTON | FROM NC 12 TO SR 1232 | 2 | 2 | 2WU | NO | NO | 0.25 | 20 | * | 100 | 5 | 0.50 | | | 244 | 16 | | 0.4 | * | | | |
| 1CR.20281.102 | Dare | 12 | SR1529 LOST TREE TRAIL | FROM SR 1232 TO DEAD END | 2 | 2 | 2WU | NO | NO | 1.00 | 20 | * | 400 | 10 | 2.00 | | | 1,024 | 69 | | 1.0 | * | | | |
| TOTAL | | | | | | | | | | 7.78 | | 1 | 2,682 | 116 | 14.72 | 79,000 | 7,151 | 2,980 | 627 | 800 | 7.1 | 1 | 320 | 74,257 | 53,002 |
| GRAND TOTAL | | | | | | | | | | 7.78 | | 1 | 2,682 | 116 | 14.72 | 79,000 | 7,151 | 2,980 | 627 | 800 | 7.1 | 1 | 320 | 74,257 | 53,002 |