

10/03/13

CONTRACT NO.: DA00265 WBS ELEMENT: 2016CPT.01.06.20151.1, ETC

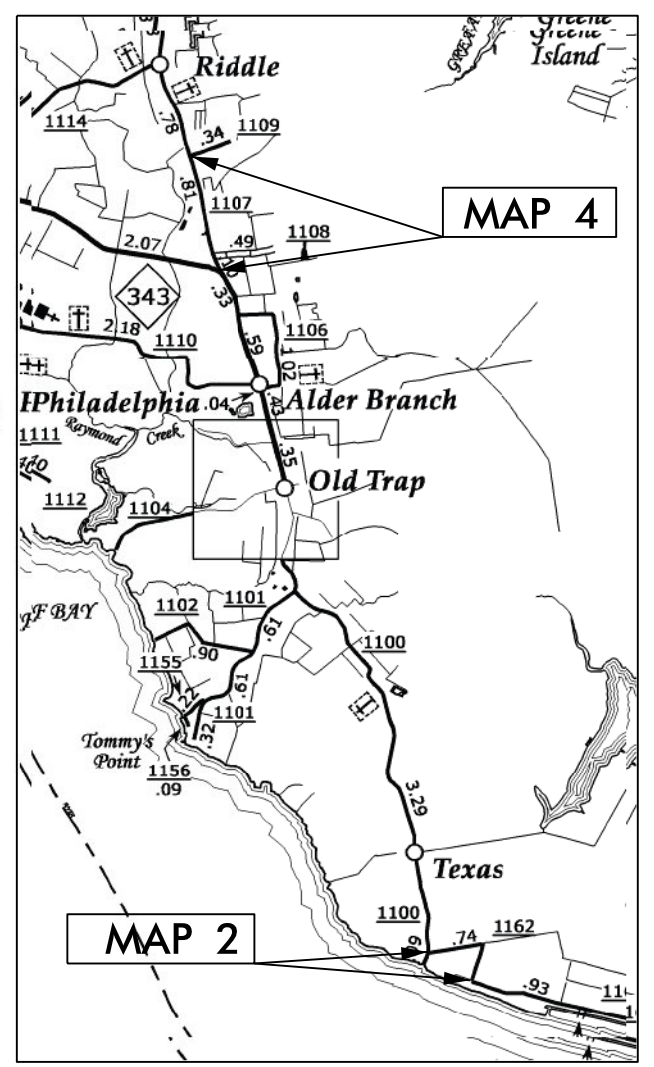
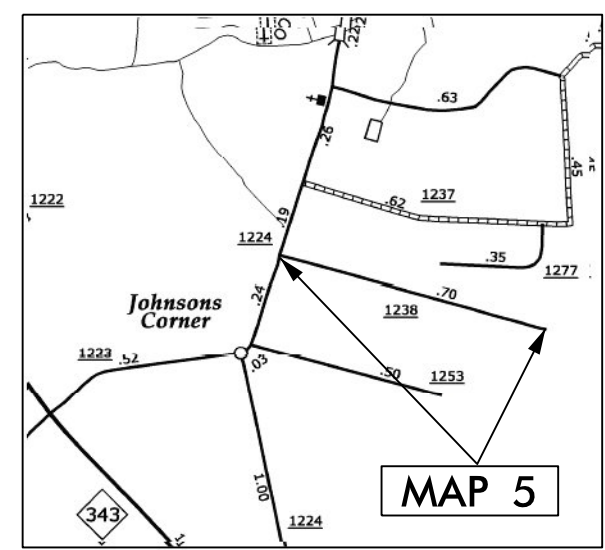
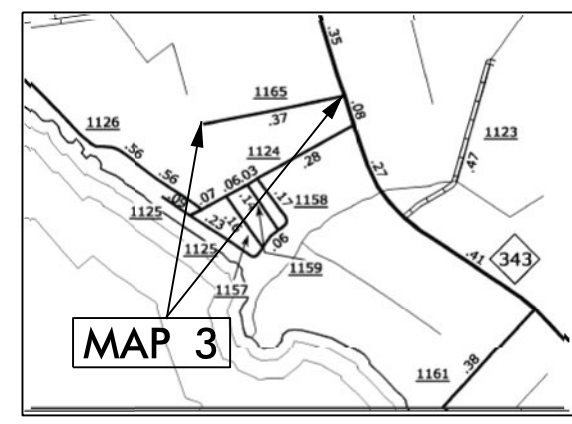
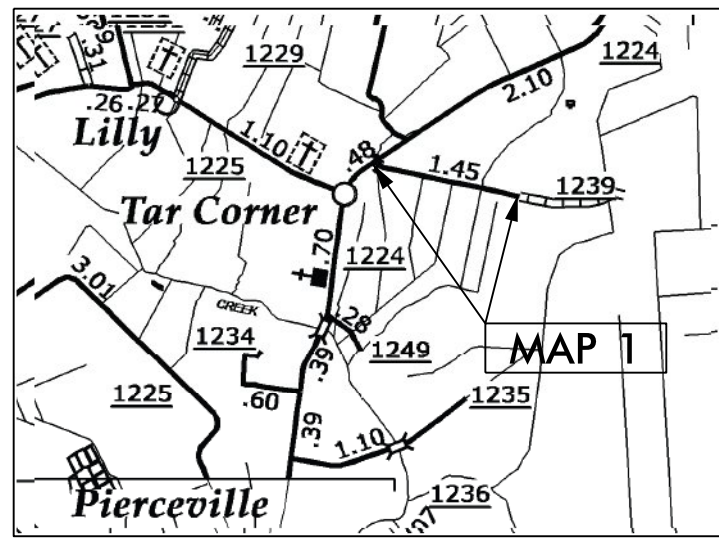
STATE OF NORTH CAROLINA
DIVISION OF HIGHWAYS
CAMDEN COUNTY

STATE	STATE PROJECT REFERENCE NO.	SHEET NO.	TOTAL SHEETS
N.C.	2016CPT.01.06.20151.1, ETC	1	9
STATE PROJ. NO.	F.A. PROJ. NO.	DESCRIPTION	
2016CPT.01.06.20151.1		MAP 1	
2016CPT.01.06.20151.2		MAP 2	
2016CPT.01.06.20151.3		MAP 3	
2016CPT.01.06.20151.4		MAP 4	
2016CPT.01.06.20151.5		MAP 5	



LOCATION: MAP 1 SR 1239 CONNER FARM ROAD FROM SR 1224 TO DEAD END
 MAP 2 SR 1162 CAMDEN POINT ROAD FROM SR 1100 TO SR 1163
 MAP 3 SR 1165 JORDAN LANE FROM NC 343 TO DEAD END
 MAP 4 SR 1107 SANDY HOOK FROM NC 343 TO SR 1109
 MAP 5 SR 1238 BASS LAKE FROM SR 1224 TO DEAD END

TYPE OF WORK: RESURFACING



NTS

PROJECT LENGTH	
LENGTH OF ROADWAY PROJECT MAP 1	= 0.85 MI.
LENGTH OF ROADWAY PROJECT MAP 2	= 0.77 MI.
LENGTH OF ROADWAY PROJECT MAP 3	= 0.38 MI.
LENGTH OF ROADWAY PROJECT MAP 4	= 1.01 MI.
LENGTH OF ROADWAY PROJECT MAP 5	= 0.70 MI.

Prepared in the Office of:
DIVISION OF HIGHWAYS
 113 Airport Dr., Edenton NC, 27932

2012 STANDARD SPECIFICATIONS

LETTING DATE: _____

W.B. HOBBS, P.E.
 DIVISION PROJECT MANAGER

C.E. SLACHTA
 DIVISION PROPOSALS ENGINEER

**DIVISION OF HIGHWAYS
 STATE OF NORTH CAROLINA**

DRAWN BY: BJT

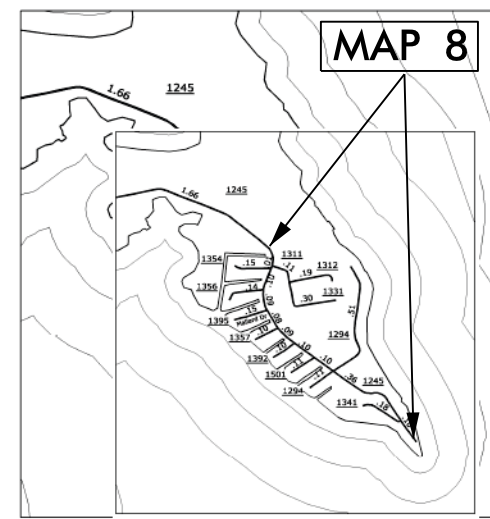
10/03/13

CONTRACT NO.: DA00265 WBS ELEMENT: 2016CPT.01.06.20151.1, ETC.

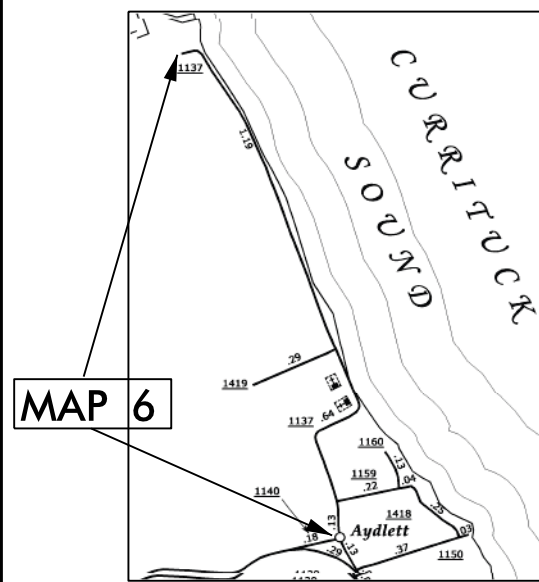
STATE OF NORTH CAROLINA
DIVISION OF HIGHWAYS

CURRITUCK COUNTY

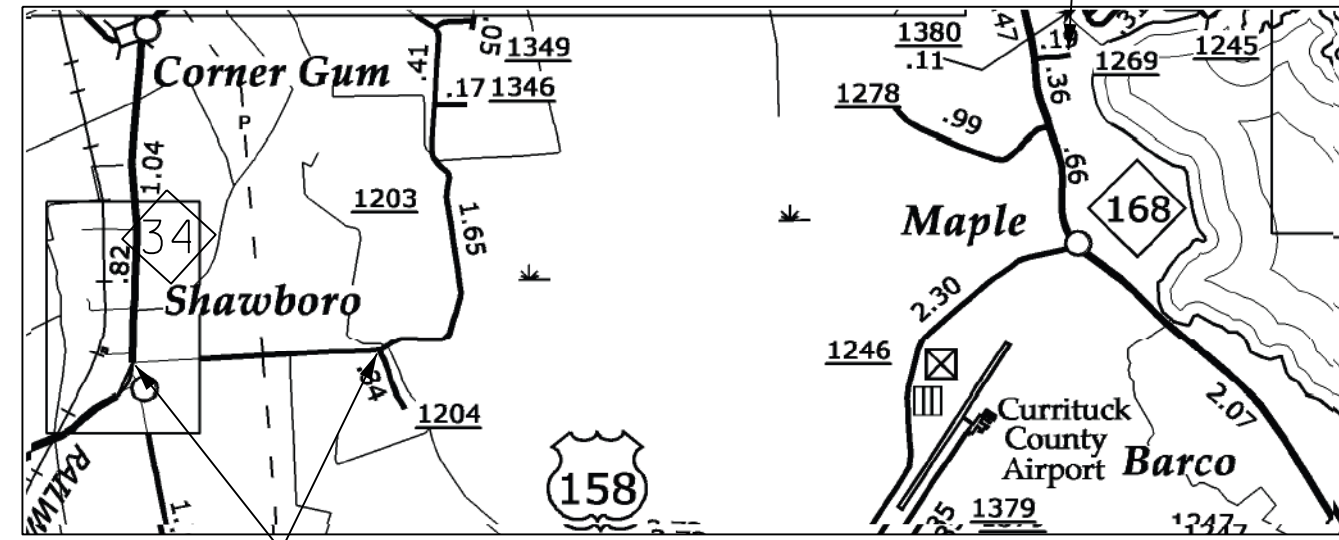
STATE	STATE PROJECT REFERENCE NO.	SHEET NO.	
N.C.	2016CPT.01.06.20151.1, ETC.	2	9
STATE PROJ. NO.	F.A. PROJ. NO.	DESCRIPTION	
2016CPT.01.06.20271.1		MAP 6	
2016CPT.01.06.20271.2		MAP 7	
2016CPT.01.06.20271.3		MAP 8	
2016CPT.01.06.20271.4		MAP 9	
2016CPT.01.06.20271.5		MAP 10	



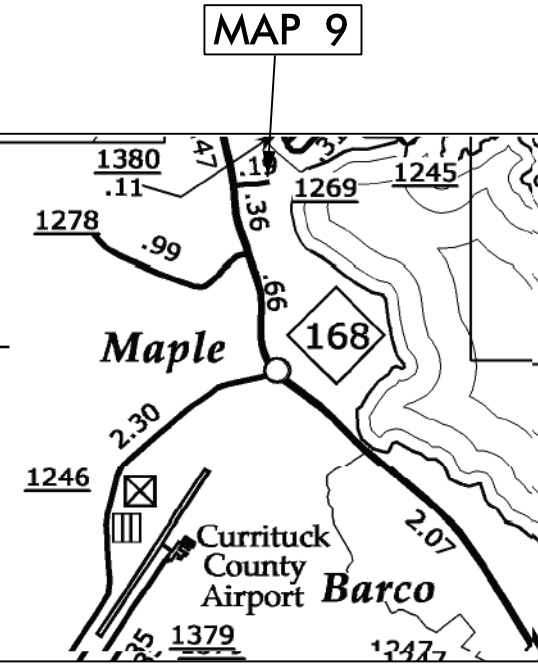
Coinjock Bay Area



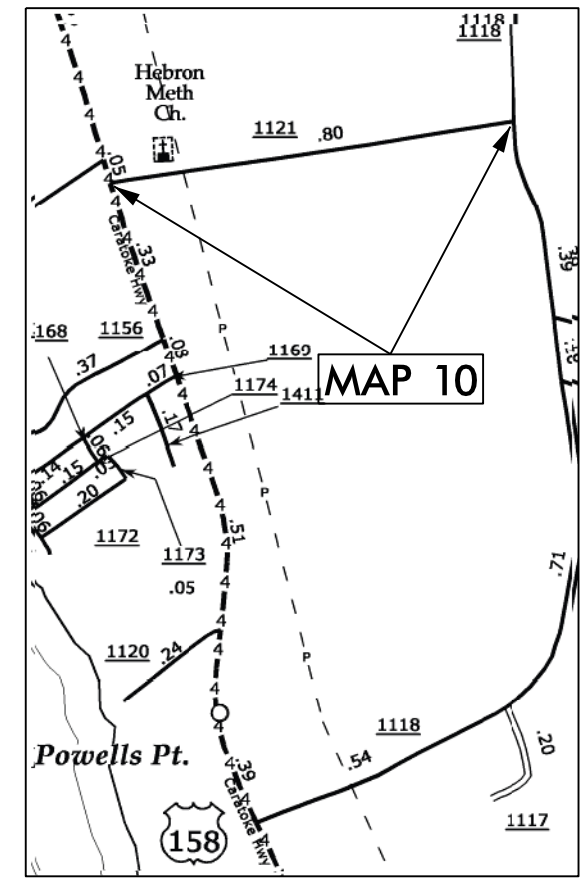
MAP 6



MAP 7



MAP 9



MAP 10

LOCATION: MAP 6 SR 1137 NARROW SHORES ROAD FROM SR 1140 TO DEAD END
 MAP 7 SR 1203 EAST RIDGE ROAD FROM NC 34 TO SR 1204
 MAP 8 SR 1245 BELLS ISLAND RD FROM END OF PAVEMENT NORTH 1.11 MILE TO OLD OAK DR.
 MAP 9 SR 1269 TAYLOR'S ROAD FROM NC 168 TO DEAD END
 MAP 10 SR 1121 BUSTER NEWBERN ROAD FROM US 158 TO SR 1118

TYPE OF WORK: RESURFACING



NTS

PROJECT LENGTH	
LENGTH OF ROADWAY PROJECT	MAP 6 = 1.96 MI.
LENGTH OF ROADWAY PROJECT	MAP 7 = 1.30 MI.
LENGTH OF ROADWAY PROJECT	MAP 8 = 1.11 MI.
LENGTH OF ROADWAY PROJECT	MAP 9 = 0.21 MI.
LENGTH OF ROADWAY PROJECT	MAP 10 = 0.80 MI.

Prepared In the Office of:
DIVISION OF HIGHWAYS
113 Airport Dr., Edenton NC, 27932

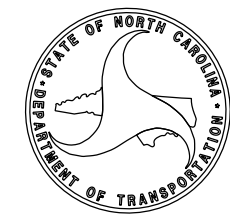
2012 STANDARD SPECIFICATIONS

LETTING DATE: _____

W.B. HOBBS, P.E.
DIVISION PROJECT MANAGER

C.E. SLACHTA
DIVISION PROPOSALS ENGINEER

DIVISION OF HIGHWAYS
STATE OF NORTH CAROLINA



DRAWN BY: BJT

10/03/13

CONTRACT NO.: DA00265 WBS ELEMENT: 2016CPT.01.06.20151.1, ETC.

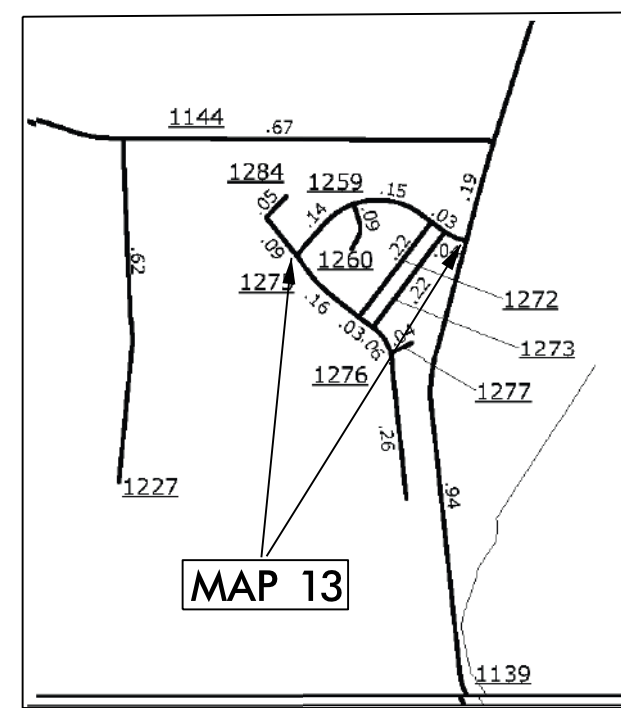
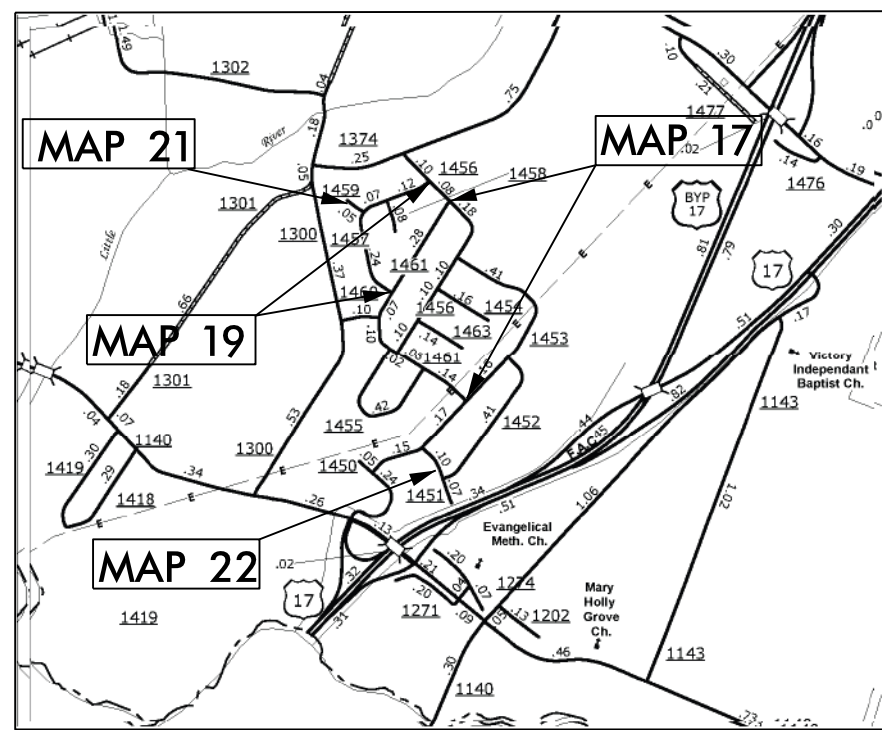
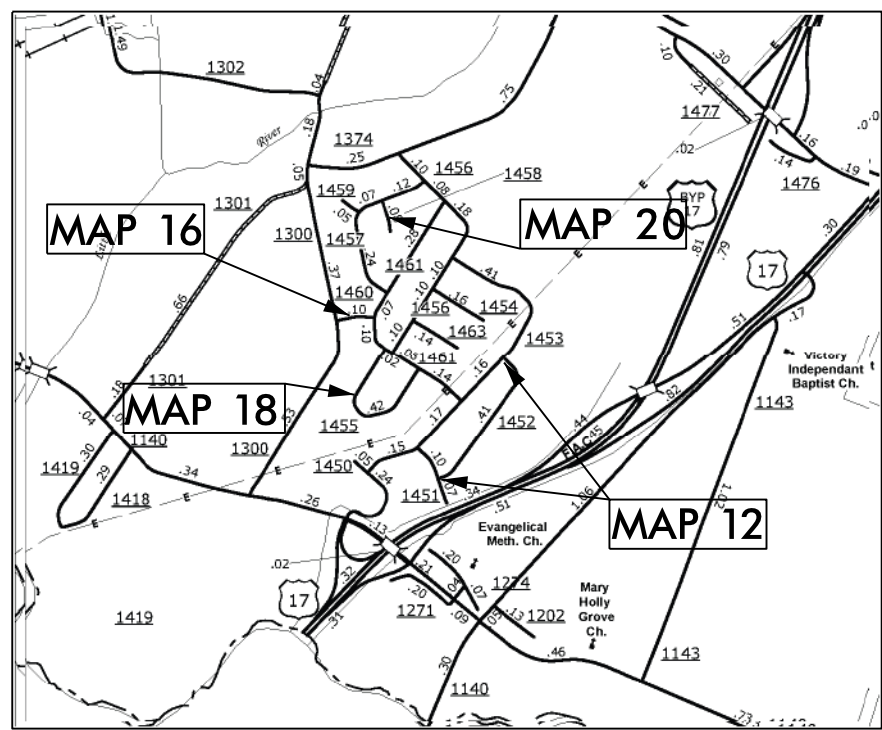
STATE OF NORTH CAROLINA
DIVISION OF HIGHWAYS

PASQUOTANK COUNTY

LOCATION: MAP 12 SR 1452 SHELLIE DR FROM SR 1451 TO SR 1453
MAP 13 SR 1259 PRINCESS ANN CIRCLE FROM SR 1139 TO 1275
MAP 16 SR 1460 NORMA DR FROM SR 1461 TO SR 1300
MAP 17 SR 1461 TROY DR FROM SR 1456 TO SR 1453
MAP 18 SR 1455 LEE CIRCLE FROM SR 1461 TO SR 1461
MAP 19 SR 1457 TRAVIS DR FROM SR 1461 TO SR 1456
MAP 20 SR 1458 CHRISTIE DR FROM SR 1457 TO CUL-DE-SAC
MAP 21 SR 1459 JAMES CIRCLE FROM SR 1457 TO CUL-DE-SAC
MAP 22 SR 1451 JOYCE DR FROM SR 1453 TO END

TYPE OF WORK: RESURFACING

STATE	STATE PROJECT REFERENCE NO.	SHEET NO.
N.C.	2016CPT.01.06.20151.1, ETC	3 9
STATE PROJ. NO.	F.A. PROJ. NO.	DESCRIPTION
2016CPT.01.06.20701.10		MAP 12
2016CPT.01.06.20701.11		MAP 13
2016CPT.01.06.20701.3		MAP 16
2016CPT.01.06.20701.4		MAP 17
2016CPT.01.06.20701.5		MAP 18
2016CPT.01.06.20701.6		MAP 19
2016CPT.01.06.20701.7		MAP 20
2016CPT.01.06.20701.8		MAP 21
2016CPT.01.06.20701.9		MAP 22



NTS

PROJECT LENGTH

LENGTH OF ROADWAY PROJECT	MAP 12 = 0.41 MI.
LENGTH OF ROADWAY PROJECT	MAP 13 = 0.36 MI.
LENGTH OF ROADWAY PROJECT	MAP 16 = 0.10 MI.
LENGTH OF ROADWAY PROJECT	MAP 17 = 0.69 MI.
LENGTH OF ROADWAY PROJECT	MAP 18 = 0.41 MI.
LENGTH OF ROADWAY PROJECT	MAP 19 = 0.43 MI.
LENGTH OF ROADWAY PROJECT	MAP 20 = 0.08 MI.
LENGTH OF ROADWAY PROJECT	MAP 21 = 0.05 MI.
LENGTH OF ROADWAY PROJECT	MAP 22 = 0.16 MI.

Prepared in the Office of:
DIVISION OF HIGHWAYS
113 Airport Dr., Edenton NC, 27932

2012 STANDARD SPECIFICATIONS

LETTING DATE: _____

W.B. HOBBS, P.E.
DIVISION PROJECT MANAGER

C.E. SLACHTA
DIVISION PROPOSALS ENGINEER

**DIVISION OF HIGHWAYS
STATE OF NORTH CAROLINA**

DRAWN BY: BJT

10/03/13

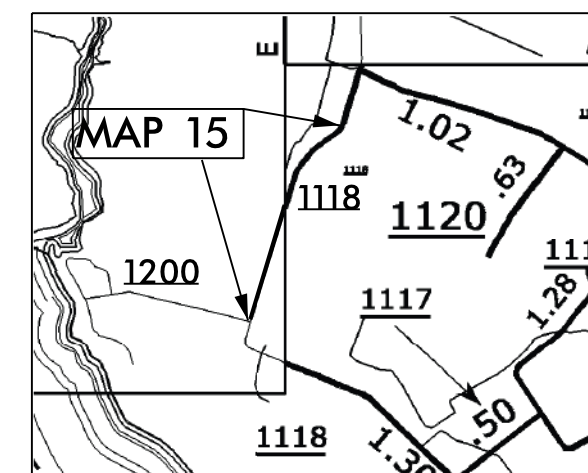
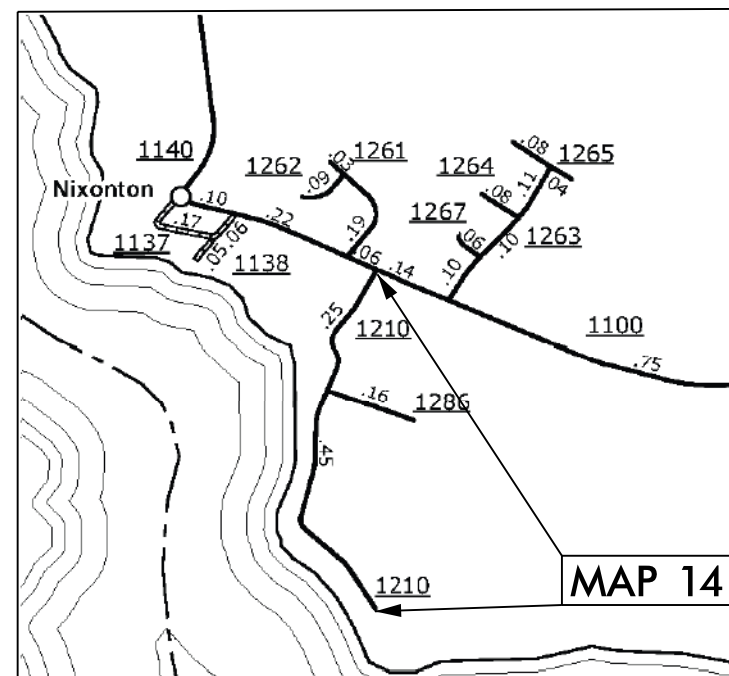
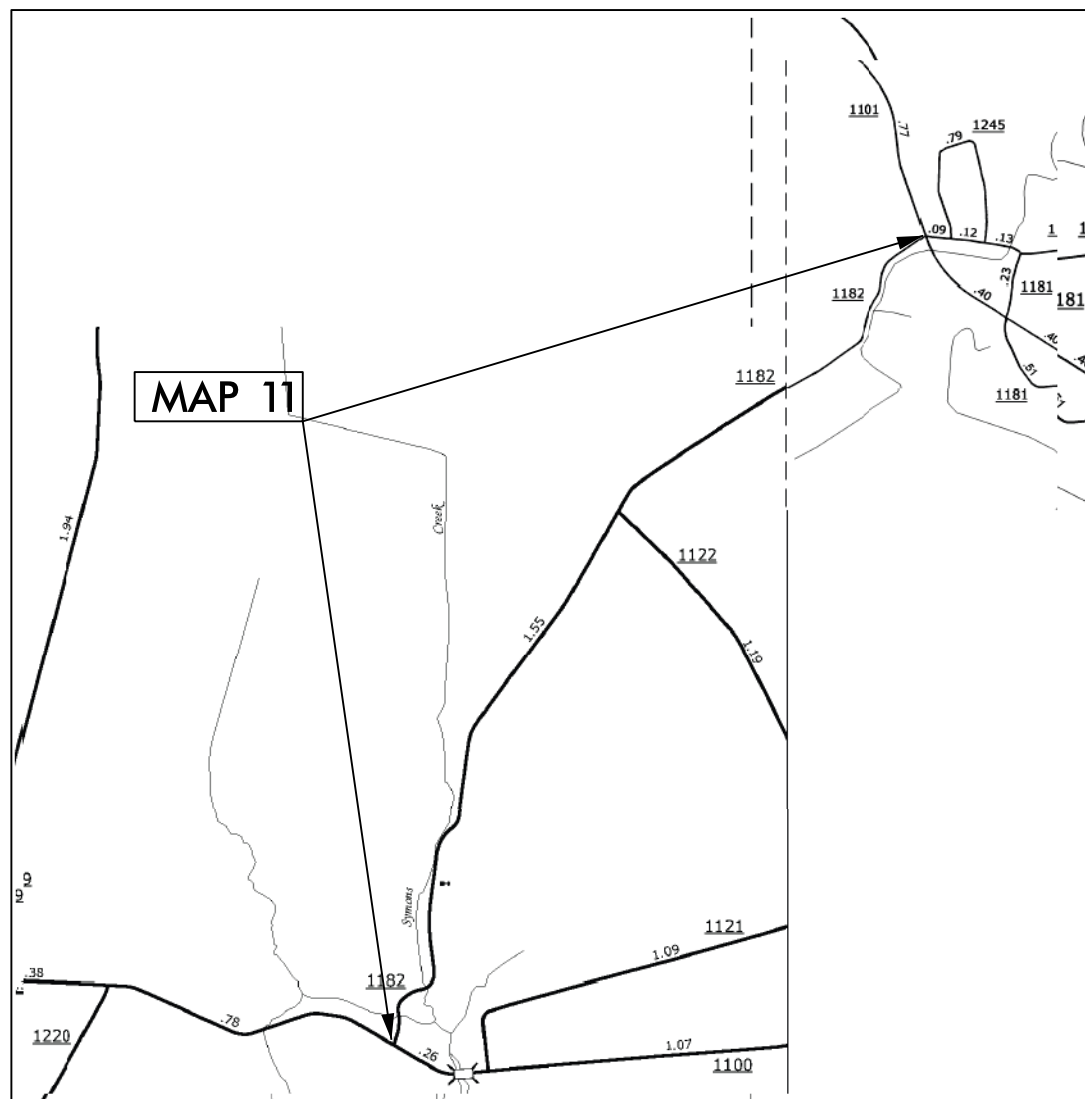
CONTRACT NO.: DA00265 WBS ELEMENT: 2016CPT.01.06.20151.1, ETC.

STATE OF NORTH CAROLINA
DIVISION OF HIGHWAYS

PASQUOTANK COUNTY

LOCATION: MAP 11 SR 1182 MEADS TOWN ROAD FROM SR 1100 TO SR 1101
MAP 14 SR 1210 LANE DRIVE FROM SR 1100 TO DEAD END
MAP 15 SR 1118 DRY RIDGE ROAD FROM SR 1200 TO THE NORTH 1 MILE
TYPE OF WORK: RESURFACING

STATE	STATE PROJECT REFERENCE NO.	SHEET NO.
N.C.	2016CPT.01.06.20151.1, ETC	4 9
STATE PROJ. NO.	F.A. PROJ. NO.	DESCRIPTION
2016CPT.01.06.20701.1		MAP 11
2016CPT.01.06.20701.12		MAP 14
2016CPT.01.06.20701.2		MAP 15



NTS

PROJECT LENGTH

- LENGTH OF ROADWAY PROJECT MAP 11 = 2.81 MI.
- LENGTH OF ROADWAY PROJECT MAP 14 = 0.70 MI.
- LENGTH OF ROADWAY PROJECT MAP 15 = 0.98 MI.

Prepared in the Office of:
DIVISION OF HIGHWAYS
113 Airport Dr., Edenton NC, 27932

2012 STANDARD SPECIFICATIONS

LETTING DATE: _____

W.B. HOBBS, P.E.
DIVISION PROJECT MANAGER

C.E. SLACHTA
DIVISION PROPOSALS ENGINEER

DIVISION OF HIGHWAYS
STATE OF NORTH CAROLINA

DRAWN BY: BJT

C O N T R A C T P A V E M E N T S C H E D U L E

C1	PROP. APPROX. 1½" ASPHALT CONCRETE SURFACE COURSE, TYPE SF9.5A, AT AN AVERAGE RATE OF 165 LBS. PER SQ. YD.
U	EXISTING PAVEMENT.
T	EARTH MATERIAL

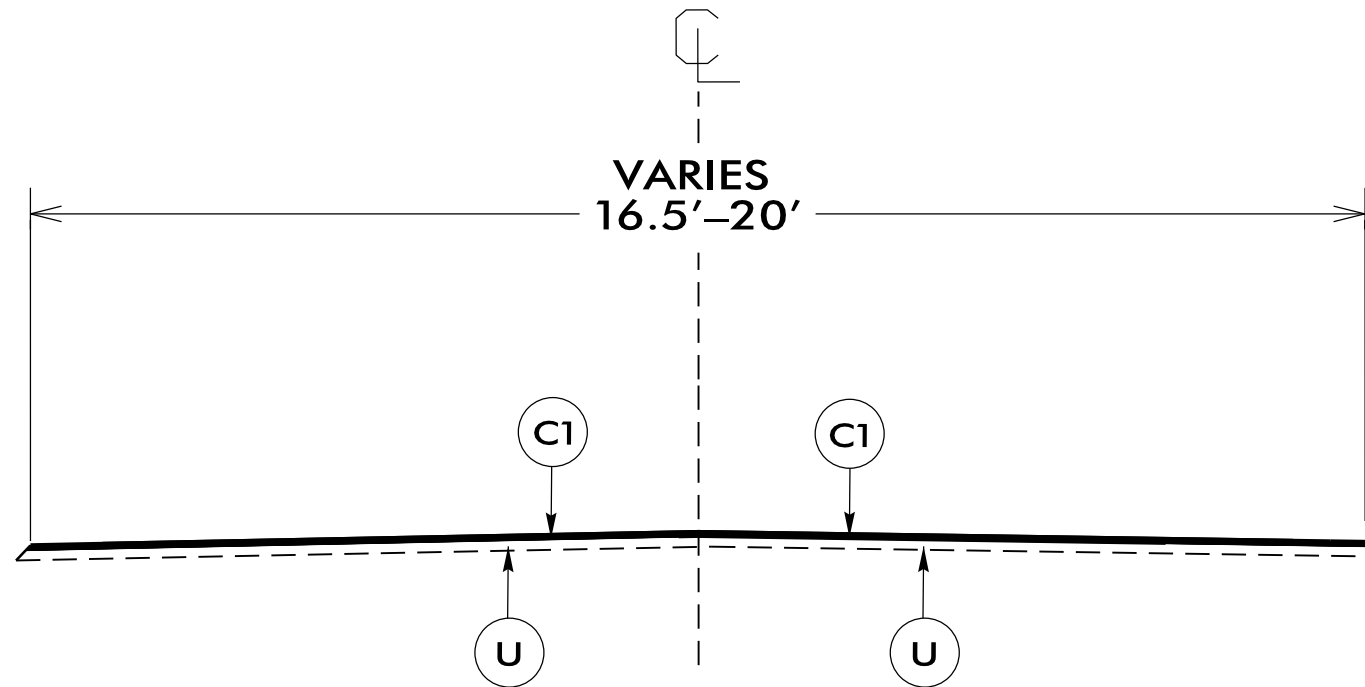
P A V E M E N T S C H E D U L E

C1	PROP. APPROX. 1½" ASPHALT CONCRETE SURFACE COURSE, TYPE SF9.5A, AT AN AVERAGE RATE OF 165 LBS. PER SQ. YD.
U	EXISTING PAVEMENT.
T	EARTH MATERIAL

PROJECT REFERENCE NO.	SHEET NO.
2016CPT.01.06.20151.1, ETC	6

NOTES:

- *ALL PAVED S.R. ROADS TO BE RESURFACED TO THE ENDS OF THE RADII, OR AS DIRECTED BY THE ENGINEER
- *EDGES, PAVEMENT WIDENING, INTERSECTIONS, AND BRIDGE FLARES ARE INCLUDED IN THE TABLE OF QUANTITIES
- *SHOULDERS TO BE RECONSTRUCTED BY OTHERS
- *PAVEMENT MARKINGS TO BE INSTALLED BY OTHERS

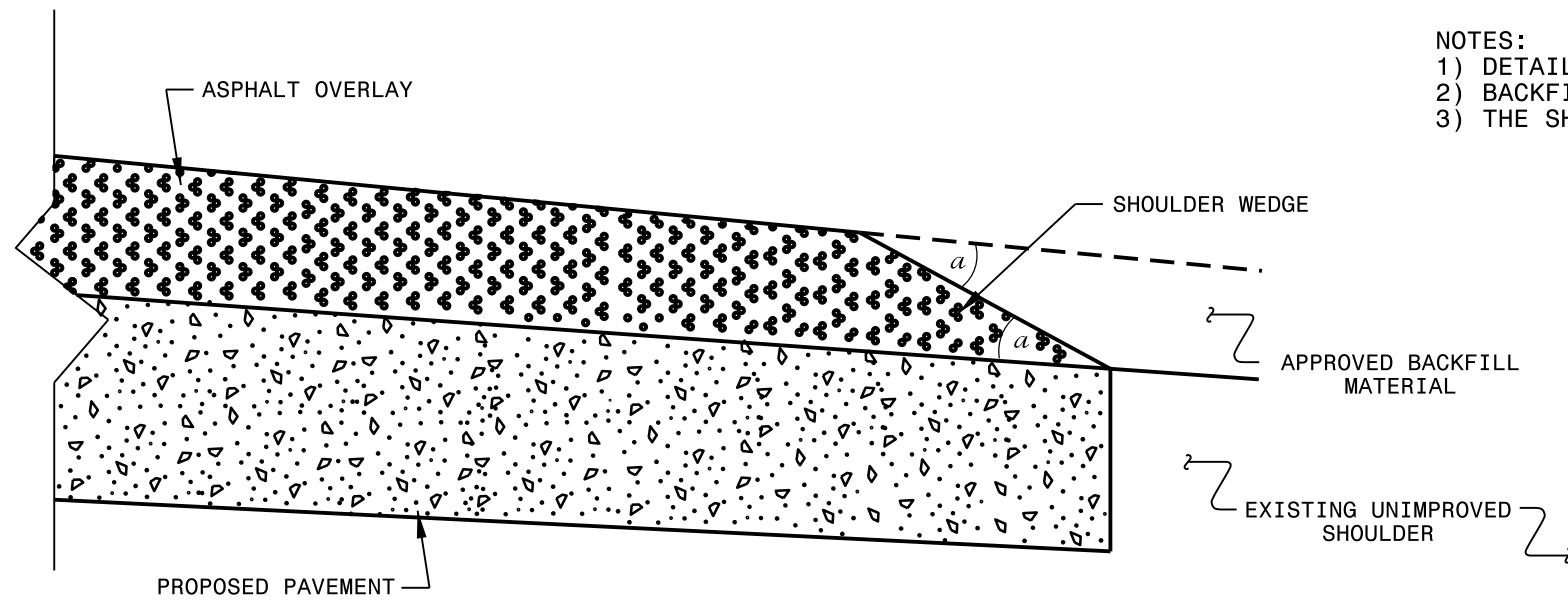


TYPICAL SECTION NO. 1

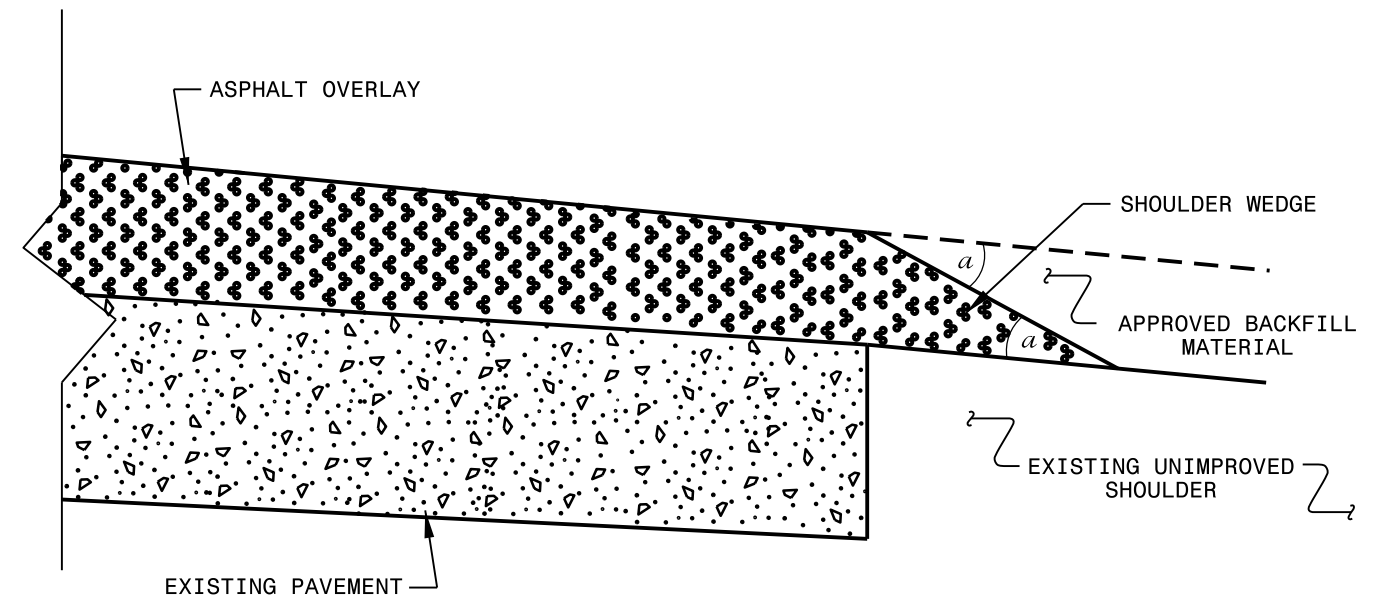
USE WITH MAP 1 - 22

NTS

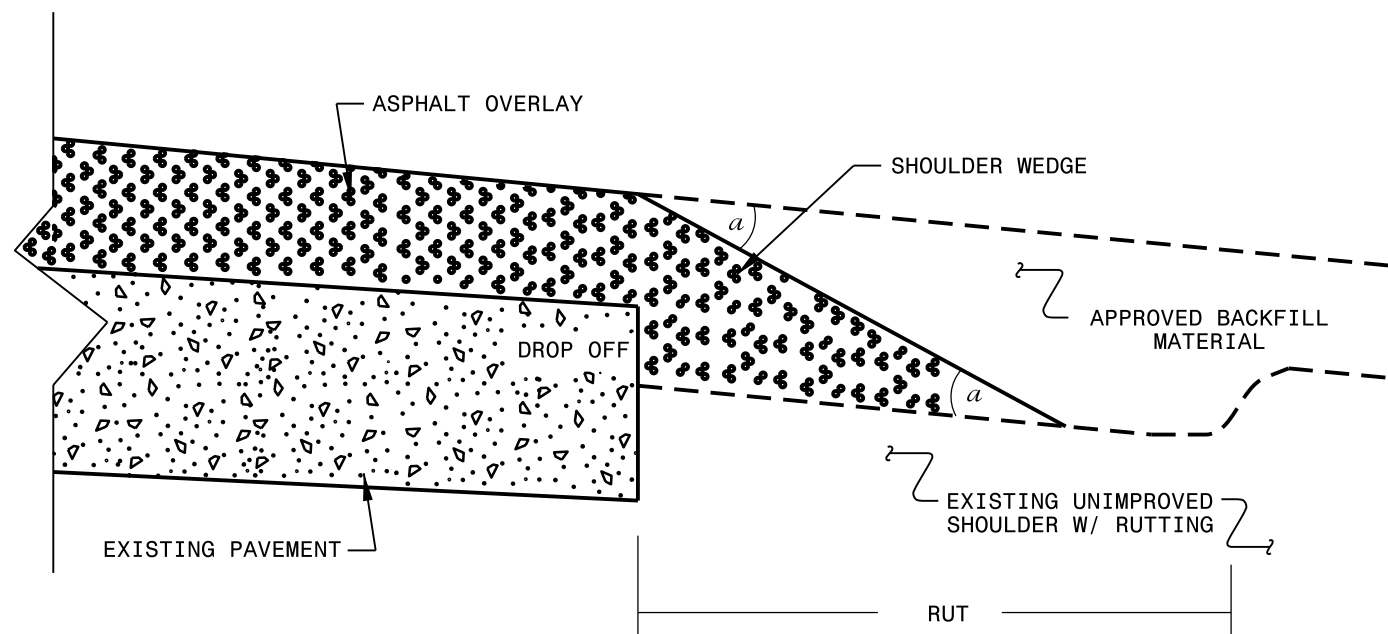
- NOTES:
- 1) DETAIL DOES NOT APPLY TO OGAFCC AND ULTRA-THIN BONDED WEARING COURSE.
 - 2) BACKFILL SHOULDER WITH APPROVED MATERIAL.
 - 3) THE SHOULDER WEDGE DEVICE MAY BE DISENGAGED AT PAVED DRIVEWAYS AND SIDE STREETS.



SHOULDER WEDGE DETAIL
(Resurfacing Projects w/ Widening or
with Existing Paved Shoulder having no dropoffs)



SHOULDER WEDGE DETAIL
(Resurfacing Projects w/ NO Widening)



SHOULDER WEDGE DETAIL
(Resurfacing Adjacent to
Rutted Shoulder)

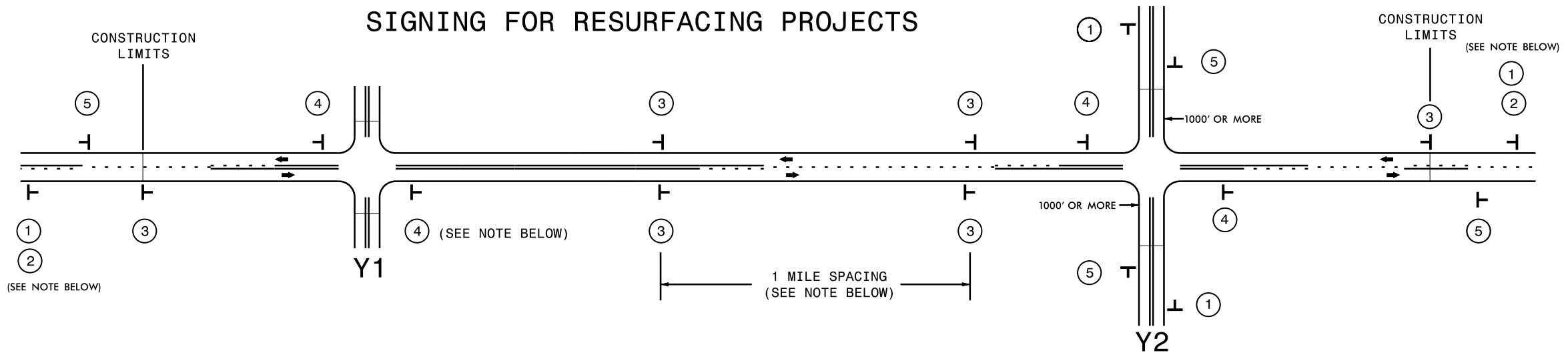
- SHOULDER WEDGE ANGLE = 30°

**CONTRACT STANDARDS
AND DEVELOPMENT UNIT**
Office 919-707-6950 FAX 919-250-4119

**SHOULDER WEDGE
DETAILS**

ORIGINAL BY: T.SPELL DATE: 7-19-11
 MODIFIED BY: DATE: 10/16/12
 CHECKED BY: DATE:
 FILE SPEC.: s:\usr\details\stand\shoulderwedgedetail.dgn

SIGNING FOR RESURFACING PROJECTS



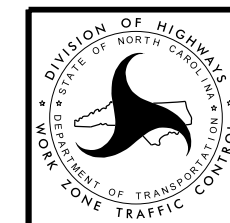
LEGEND	
T	STATIONARY SIGN
←	DIRECTION OF TRAFFIC FLOW

MAINLINE (-L-) SIGNING

-Y- LINE SIGNING

SIGNING NOTES AND PLACEMENT PER DIRECTION		
1 2	<p>PLACE 1000' PRIOR TO BEGINNING OF CONSTRUCTION LIMITS. ONLY USED ON -Y- LINES IF RESURFACING LIMITS EXTEND 1000' ALONG -Y- LINE.</p> <p>#2 SIGN ONLY USED WHEN RESURFACING LIMITS ARE 2 OR MORE MILES IN LENGTH. ROUND UP TO NEXT WHOLE NUMBER. (NO FRACTIONAL OR DECIMAL NUMBERS)</p>	<p style="text-align: center;">NO REQUIRED STATIONARY SIGNING FOR THE FOLLOWING -Y- LINE CONDITIONS:</p> <ol style="list-style-type: none"> 1) LESS THAN 1000' OF RESURFACING ALONG -Y- LINE 2) SUBDIVISION ROADS 3) DEAD END ROADS <p>WHEN PAVING/CONSTRUCTION ACTIVITIES PROCEED ACROSS AN UNSIGNED -Y- LINE, ADVANCE WARNING PORTABLE SIGNS SHALL BE USED ALONG THE -Y- LINE AS SHOWN BELOW. REMOVE UPON COMPLETION OF WORK.</p> <div style="display: flex; justify-content: space-around; align-items: center;"> </div> <p style="text-align: center;">PLACED 500' IN ADVANCE OF FLAGGER. PLACED 250' IN ADVANCE OF FLAGGER.</p>
3	<p>PLACE INITIALLY AT THE CONSTRUCTION LIMITS AND SPACED 1 MILE APART THEREAFTER. IF NO -Y- LINES EXIST, PLACE 2ND SET 1/2 MILE FROM THE CONSTRUCTION LIMITS AND THEN SPACE 1 MILE THEREAFTER.</p>	
4	<p>THESE ARE FOR -Y- LINES THAT ARE "THROUGH" ROADWAYS. DEAD END AND SUBDIVISION ROADS ARE NOT "THROUGH" ROADWAYS. INSTALL 500' +/- FROM EACH -Y- LINE APPROACH AS SHOWN ABOVE. FOR MULTIPLE -Y- LINES THAT ARE SEPARATED BY 0.25 MILES OR LESS, TREAT AS A SINGLE UNIT AND INSTALL WITHIN 500' OF EACH APPROACH. A MAXIMUM OF 2 SIGN SETS PER MILE. DO NOT INSTALL WHEN -Y- LINES ARE WITHIN 0.5 MILES FROM "END ROAD WORK" SIGN.</p>	
5	<p>PLACE 500' FOLLOWING THE END OF CONSTRUCTION LIMITS.</p>	

27-OCT-2015 14:00
 C:\Users\jgibson\OneDrive\Documents\Resurfacing\AdvWarn_2Ln.dgn
 AT D:\CA0270261



**RESURFACING
 ADVANCE WARNING SIGNS
 FOR
 RURAL AND SUBURBAN
 2 LANE ROADWAYS**

PROJECT NO.	SHEET NO.	TOTAL NO.
2016CPT.01.06.20151.1,	9	9

SUMMARY OF QUANTITIES

PROJECT NO	COUNTY	MAP NO	ROUTE	DESCRIPTION	TYP NO	LANES	LANE TYPE	FINAL SURFACE TESTING REQUIRED	WARM MIX ASPHALT REQUIRED	LENGTH MI	WIDTH FT	MOBILIZATION LS	INCIDENTAL STONE BASE TONS	SURFACE COURSE, SF9.5A TONS	ASPHALT BINDER FOR PLANT MIX TONS	ADJ. OF METER OR VALVE BOX EA	TRAFFIC CONTROL LS
2016CPT.01.06.20151.1	Camden	1	SR 1239 CONNER FARM ROAD	FROM SR 1224 TO DEAD END	1	2	2WU	NO	NO	0.85	20	1	18	911	61		1
2016CPT.01.06.20151.2	Camden	2	SR 1162 CAMDEN POINT RD	FROM SR 1100 TO SR 1163	1	2	2WU	NO	NO	0.77	19	*	4	855	57		*
2016CPT.01.06.20151.3	Camden	3	SR 1165 JORDAN LANE	NC 343 TO DEAD END	1	2	2WU	NO	NO	0.38	18	*	11	367	25		*
2016CPT.01.06.20151.4	Camden	4	SR 1107 SANDY HOOK	NC 343 TO SR 1109	1	2	2WU	NO	NO	1.01	18	*	40	1,063	71		*
2016CPT.01.06.20151.5	Camden	5	SR 1238 BASS LAKE	FROM SR 1224 TO DEAD END	1	2	2WU	NO	NO	0.70	16.5	*	5	620	42		*
2016CPT.01.06.20271.1	Currituck	6	SR 1137 NARROW SHORES ROAD	FROM SR 1140 TO DEAD END	1	2	2WU	NO	NO	1.96	18	*	35	1,891	127		*
2016CPT.01.06.20271.2	Currituck	7	SR 1203 EAST RIDGE ROAD	FROM NC 34 TO SR 1204	1	2	2WU	NO	NO	1.30	18	*	15	1,254	84		*
2016CPT.01.06.20271.3	Currituck	8	SR 1245 BELLS ISLAND ROAD	FROM END OF PAVEMENT NORTH 1.11 MILE TO OLD OAK DRIVE	1	2	2WU	NO	NO	1.11	20	*	21	1,189	80		*
2016CPT.01.06.20271.4	Currituck	9	SR 1269 TAYLOR'S ROAD	FROM NC 168 TO DEAD END	1	2	2WU	NO	NO	0.21	18	*	13	203	14		*
2016CPT.01.06.20271.5	Currituck	10	SR 1121 BUSTER NEWBERN ROAD	FROM US 158 TO SR 1118	1	2	2WU	NO	NO	0.80	18	*	15	772	52		*
2016CPT.01.06.20701.1	Pasquotank	11	SR 1182 MEADS TOWN RD	FROM SR 1100 TO SR 1101	1	2	2WU	NO	NO	2.81	20	*	80	4,388	294		*
2016CPT.01.06.20701.10	Pasquotank	12	SR 1452 SHELLIE DR	FROM SR 1451 TO SR 1453	1	2	2WU	NO	NO	0.41	20	*	2	366	25		*
2016CPT.01.06.20701.11	Pasquotank	13	SR 1259 PRINCESS ANN CIRCLE	FROM SR 1139 TO 1275	1	2	2WU	NO	NO	0.36	20	*		336	22		*
2016CPT.01.06.20701.12	Pasquotank	14	SR 1210 LANE DR	FROM SR 1100 TO DEAD END	1	2	2WU	NO	NO	0.70	20	*	1	818	55	4	*
2016CPT.01.06.20701.2	Pasquotank	15	SR 1118 DRY RIDGE RD	FROM SR 1200 TO THE NORTH 1 MILE	1	2	2WU	NO	NO	0.98	20	*	10	954	64		*
2016CPT.01.06.20701.3	Pasquotank	16	SR 1460 NORMA DR	FROM SR 1461 TO SR 1300	1	2	2WU	NO	NO	0.10	20	*		89	6	1	*
2016CPT.01.06.20701.4	Pasquotank	17	SR 1461 TROY DR	FROM SR 1456 TO SR 1453	1	2	2WU	NO	NO	0.69	20	*	2	615	41	1	*
2016CPT.01.06.20701.5	Pasquotank	18	SR 1455 LEE CIRCLE	FROM SR 1461 TO SR 1461	1	2	2WU	NO	NO	0.41	18	*		329	22	1	*
2016CPT.01.06.20701.6	Pasquotank	19	SR1457 TRAVIS DR	FROM SR 1461 TO SR 1456	1	2	2WU	NO	NO	0.43	20	*	2	384	26	2	*
2016CPT.01.06.20701.7	Pasquotank	20	SR 1458 CHRISTIE DR	FROM SR 1457 TO CUL-DE-SAC	1	2	2WU	NO	NO	0.08	20	*	2	75	5		*
2016CPT.01.06.20701.8	Pasquotank	21	SR 1459 JAMES CIRCLE	FROM SR 1457 TO CUL-DE-SAC	1	2	2WU	NO	NO	0.05	20	*	2	45	3		*
2016CPT.01.06.20701.9	Pasquotank	22	SR 1451 JOYCE	FROM SR 1453 TO END	1	2	2WU	NO	NO	0.16	20	*	2	143	10		*
GRAND TOTAL										16.27		1	280	17,667	1,186	9	1