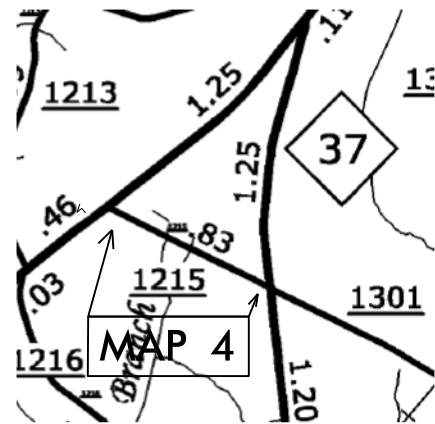


CONTRACT NO.: DA00270 WBS ELEMENT: ICR.20371.41, ETC

STATE OF NORTH CAROLINA
DIVISION OF HIGHWAYS

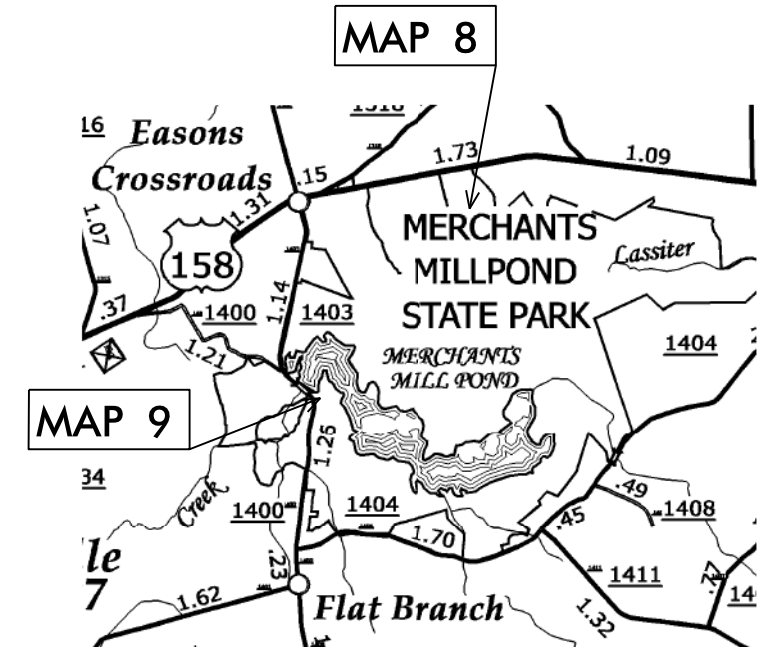
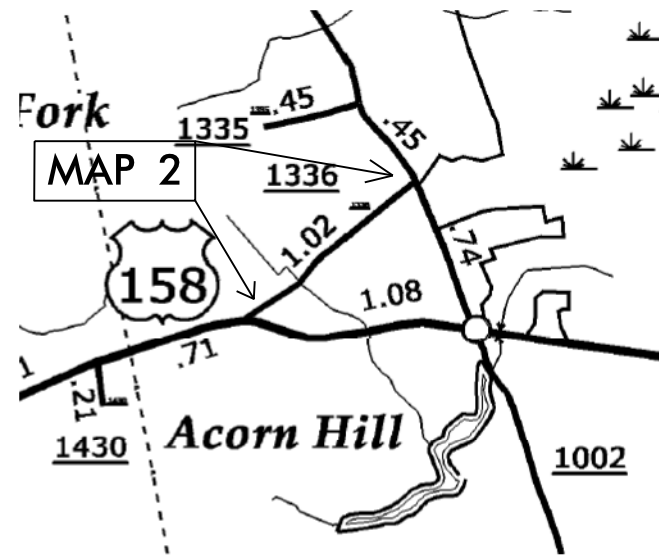
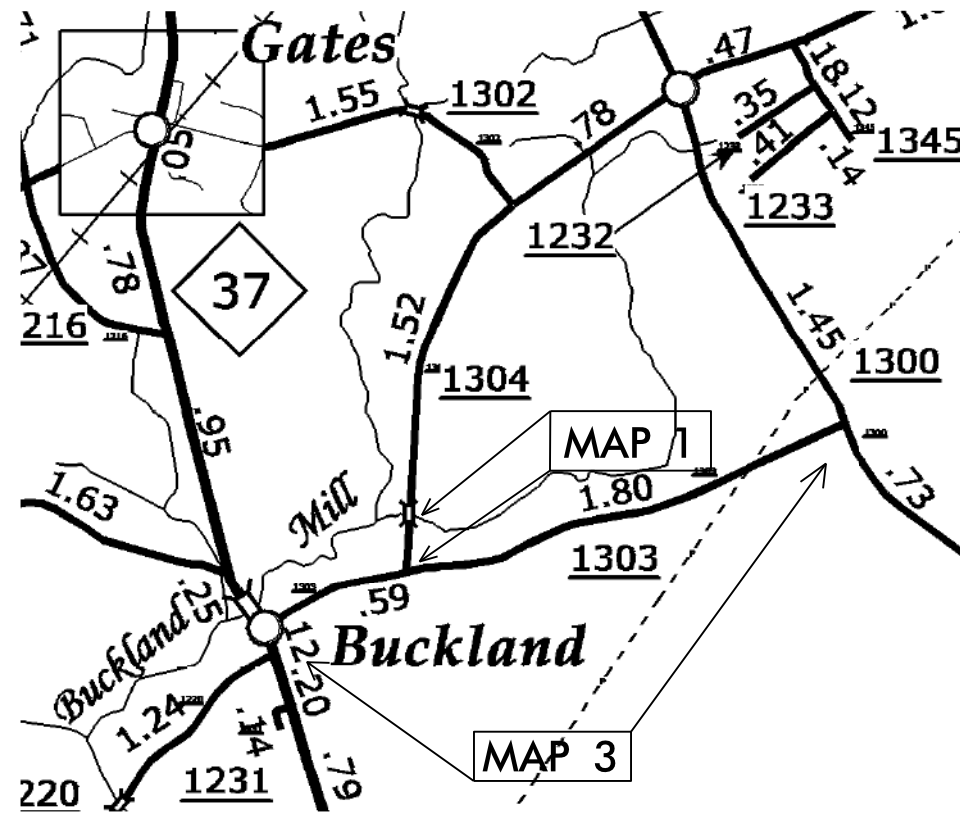
GATES COUNTY

STATE	STATE PROJECT REFERENCE NO.	SHEET NO.	TOTAL SHEETS
N.C.	ICR.20371.41,ETC	1	8
STATE PROJ. NO.	F.A. PROJ. NO.	DESCRIPTION	
1CR.20371.41		MAP 1	
2016CPT.01.11.20371.1		MAP 2	
2016CPT.01.11.20371.2		MAP 3	
2016CPT.01.11.20371.3		MAP 4	
30001.13		MAP 8	
30001.13		MAP 9	



LOCATION: MAP 1 SR 1304 WILLEYTON RD FROM SR 1303 NORTH TO BRIDGE #15
 MAP 2 SR 1336 LIGHT STREAK RD FROM US 158 TO SR 1002
 MAP 3 SR 1303 PARKER RD FROM SR 1300 TO NC 37
 MAP 4 SR 1215 TYLER RD FROM NC 37 TO US 13
 MAP 8 MERCHANTS MILLPOND CAMPGROUND FROM US 158 TO END
 MAP 9 MERCHANTS MILLPOND BOAT LAUNCH FROM SR 1400 TO BOAT LAUNCH

TYPE OF WORK: RESURFACING



NTS

PROJECT LENGTH

LENGTH OF ROADWAY PROJECT MAP 1 = 0.23 MI.
 LENGTH OF ROADWAY PROJECT MAP 2 = 1.02 MI.
 LENGTH OF ROADWAY PROJECT MAP 3 = 2.39 MI.
 LENGTH OF ROADWAY PROJECT MAP 4 = 0.83 MI.
 LENGTH OF ROADWAY PROJECT MAP 8 = 0.75 MI.
 LENGTH OF ROADWAY PROJECT MAP 9 = 0.06 MI.

Prepared in the Office of:
DIVISION OF HIGHWAYS

113 Airport Dr., Edenton NC, 27932

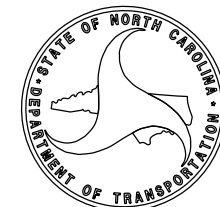
2012 STANDARD SPECIFICATIONS

LETTING DATE:

W.B. HOBBS, P.E.
DIVISION PROJECT MANAGER

C.E. SLACHTA
DIVISION PROPOSALS ENGINEER

DIVISION OF HIGHWAYS
STATE OF NORTH CAROLINA



CONTRACT NO.: DA00270 WBS ELEMENT: ICR.20371.41, ETC

DRAWN BY: JWC

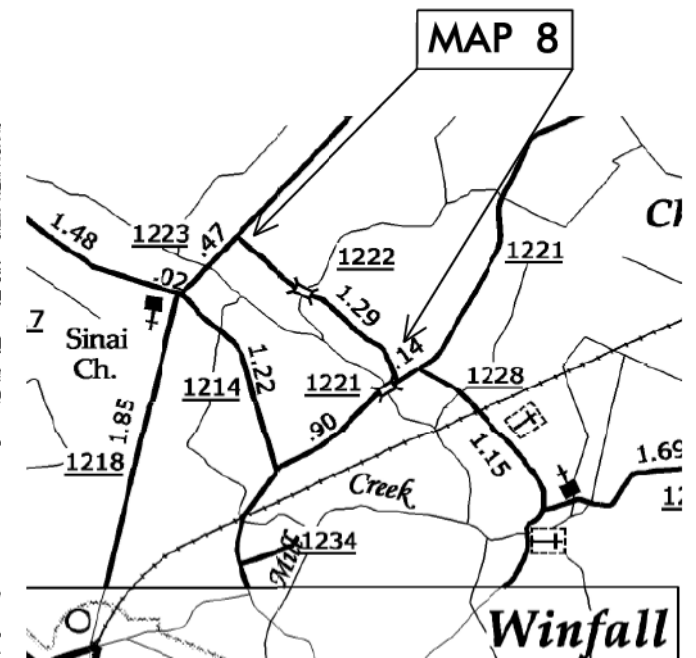
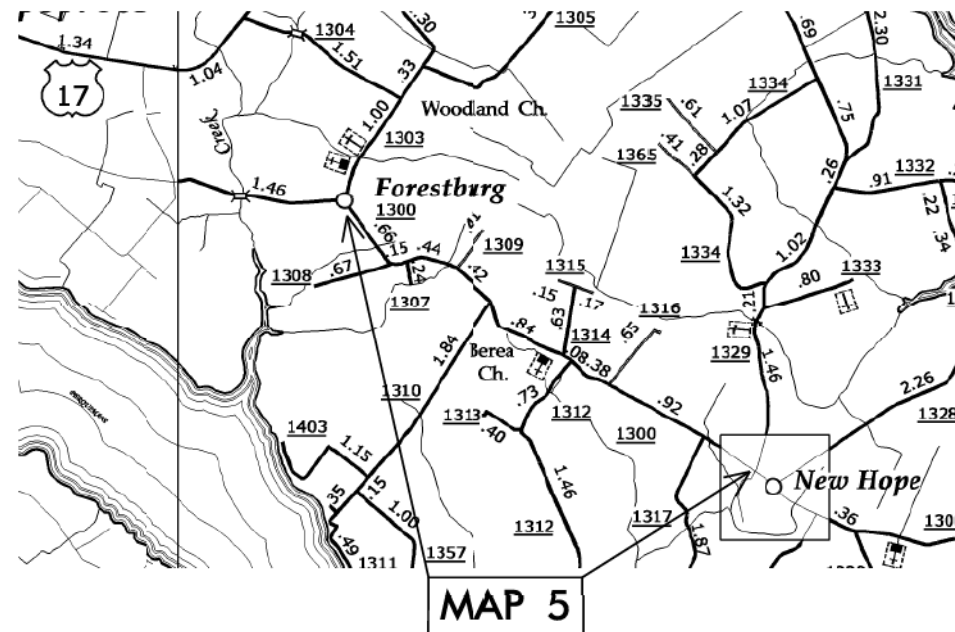
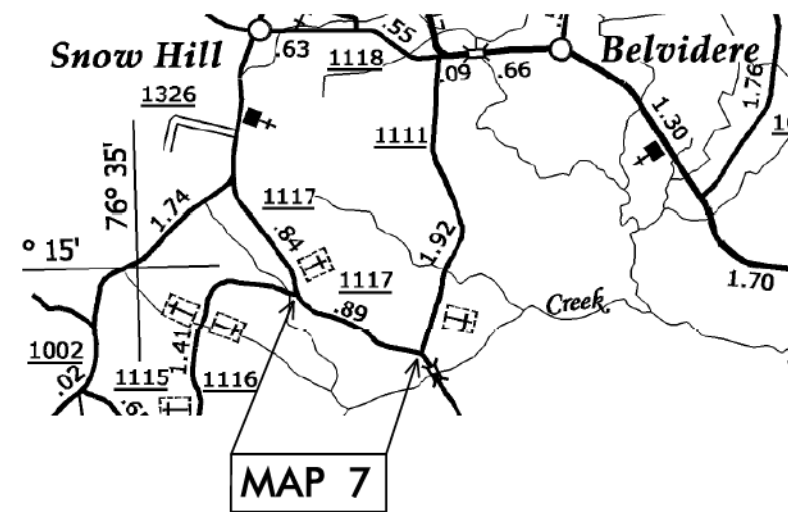
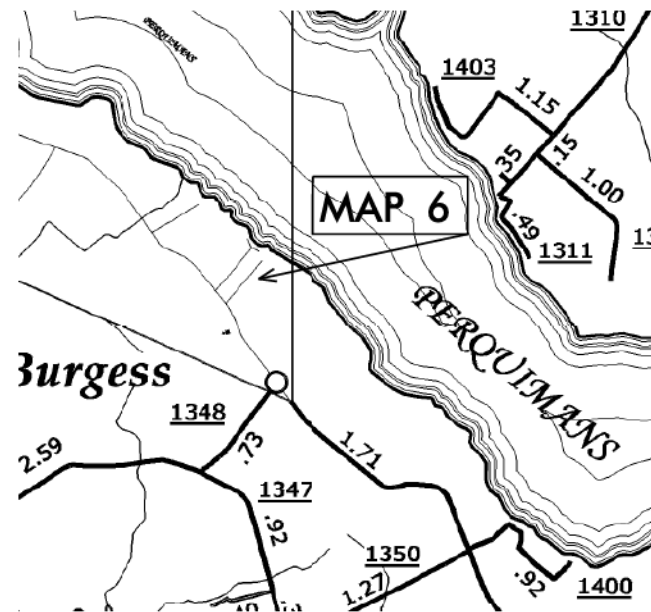
STATE OF NORTH CAROLINA
DIVISION OF HIGHWAYS

PERQUIMANS COUNTY

STATE	STATE PROJECT REFERENCE NO.	SHEET NO.	TOTAL SHEETS
N.C.	ICR.20371.41,ETC	2	8
STATE PROJ. NO.	F.A. PROJ. NO.	DESCRIPTION	
2016CPT.01.11.20721.1		MAP 5	
2016CPT.01.11.20721.2		MAP 6	
2016CPT.01.11.20721.3		MAP 7	
2016CPT.01.11.20721.1		MAP 8	

LOCATION: MAP 5 SR 1300 NEW HOPE RD FROM SR 1302 TO SR 1329
MAP 6 SR 1352 LOWE DR FROM SR 1336 TO DEAD END
MAP 7 SR 1117 BEECH SPRINGS RD FROM SR 1111 TO SR 1116
MAP 8 SR 1222 LOWES LANE FROM SR 1221 TO SR 1223

TYPE OF WORK: RESURFACING



NTS

PROJECT LENGTH

LENGTH OF ROADWAY PROJECT MAP 5 = 4.46 MI.
 LENGTH OF ROADWAY PROJECT MAP 6 = 0.39 MI.
 LENGTH OF ROADWAY PROJECT MAP 7 = 0.92 MI.
 LENGTH OF ROADWAY PROJECT MAP 8 = 1.29 MI.

Prepared in the Office of:
DIVISION OF HIGHWAYS

113 Airport Dr., Edenton NC, 27932

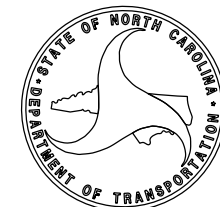
2012 STANDARD SPECIFICATIONS

LETTING DATE:

W.B. HOBBS, P.E.
DIVISION PROJECT MANAGER

C.E. SLACHTA
DIVISION PROPOSALS ENGINEER

DIVISION OF HIGHWAYS
STATE OF NORTH CAROLINA



P A V E M E N T S C H E D U L E

C1	PROP. APPROX. 1½" ASPHALT CONCRETE SURFACE COURSE, TYPE SF9.5A, AT AN AVERAGE RATE OF 165 LBS. PER SQ. YD.
U	EXISTING PAVEMENT.

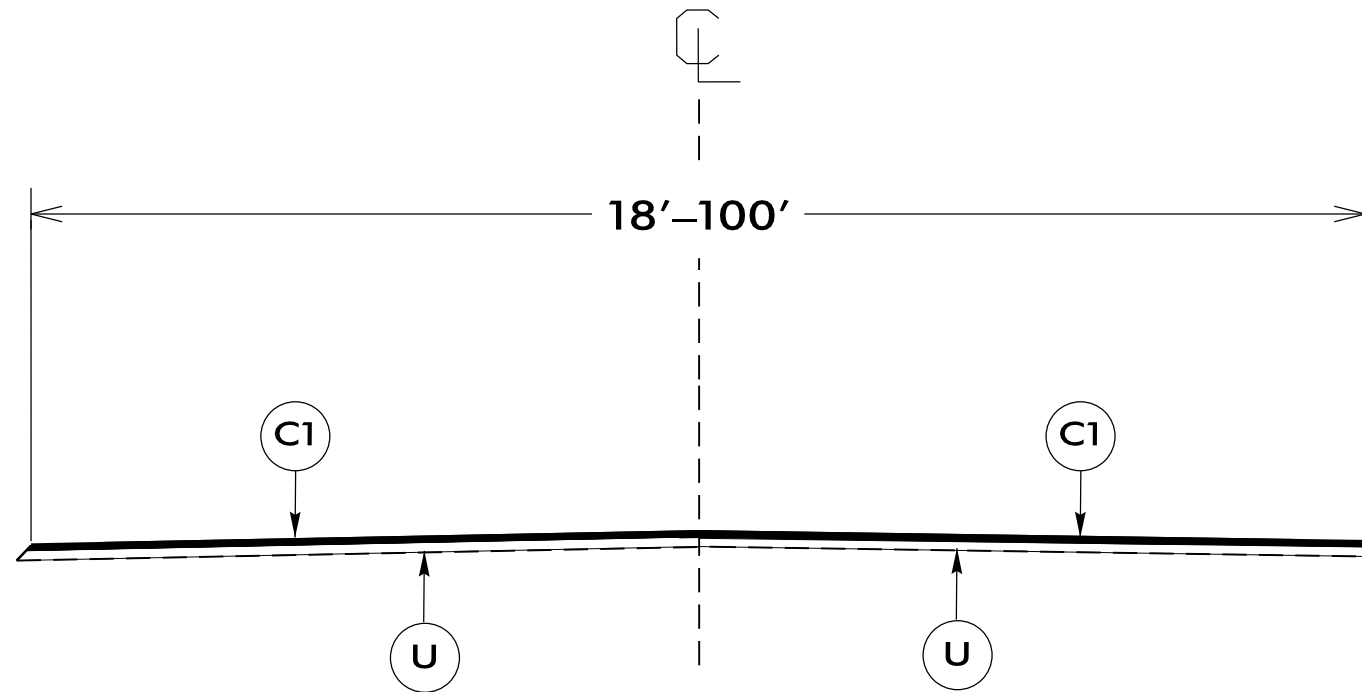
PROJECT REFERENCE NO.	SHEET NO.
1CR.20371.41, ETC.	4

NOTES:

*ALL PAVED S.R. ROADS TO BE RESURFACED TO THE ENDS OF THE RADII, OR AS DIRECTED BY THE ENGINEER

*EDGES, PAVEMENT WIDENING, INTERSECTIONS, AND BRIDGE FLARES ARE INCLUDED IN THE TABLE OF QUANTITIES

*SHOULDERS TO BE RECONSTRUCTED BY OTHERS



TYPICAL SECTION NO. 1

USE WITH MAPS 2 - 10

NTS

09-NOV-2015 10:45 AM C:\Users\jgates\Documents\PROJECT WORKING FILES\District One\DA00270 Gates & Perquimans Co. Resurfacing (2015 -2017)\1 Pre-Bid Documents\GATES2016.dgn

P A V E M E N T S C H E D U L E

C1	PROP. APPROX. 1½" ASPHALT CONCRETE SURFACE COURSE, TYPE SF9.5A, AT AN AVERAGE RATE OF 165 LBS. PER SQ. YD.
U	EXISTING PAVEMENT.
V1	MILLING BITUMIOUS PAVEMENT 1½" DEPTH.

PROJECT REFERENCE NO.	SHEET NO.
1CR.20371.41, ETC.	5

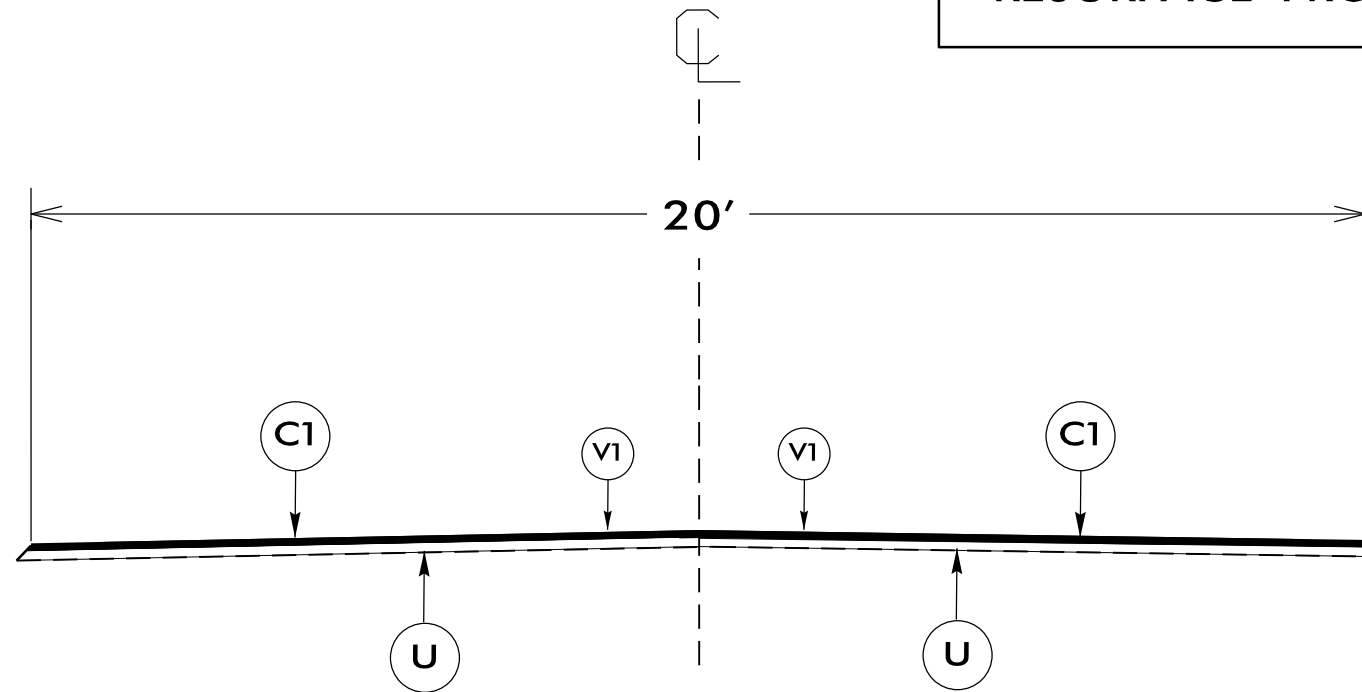
NOTES:

*ALL PAVED S.R. ROADS TO BE RESURFACED TO THE ENDS OF THE RADII, OR AS DIRECTED BY THE ENGINEER

*EDGES, PAVEMENT WIDENING, INTERSECTIONS, AND BRIDGE FLARES ARE INCLUDED IN THE TABLE OF QUANTITIES

*SHOULDERS TO BE RECONSTRUCTED BY OTHERS

MILL & FILL FROM 0+00 - 1+50
RESURFACE FROM 0+00 - 11+65

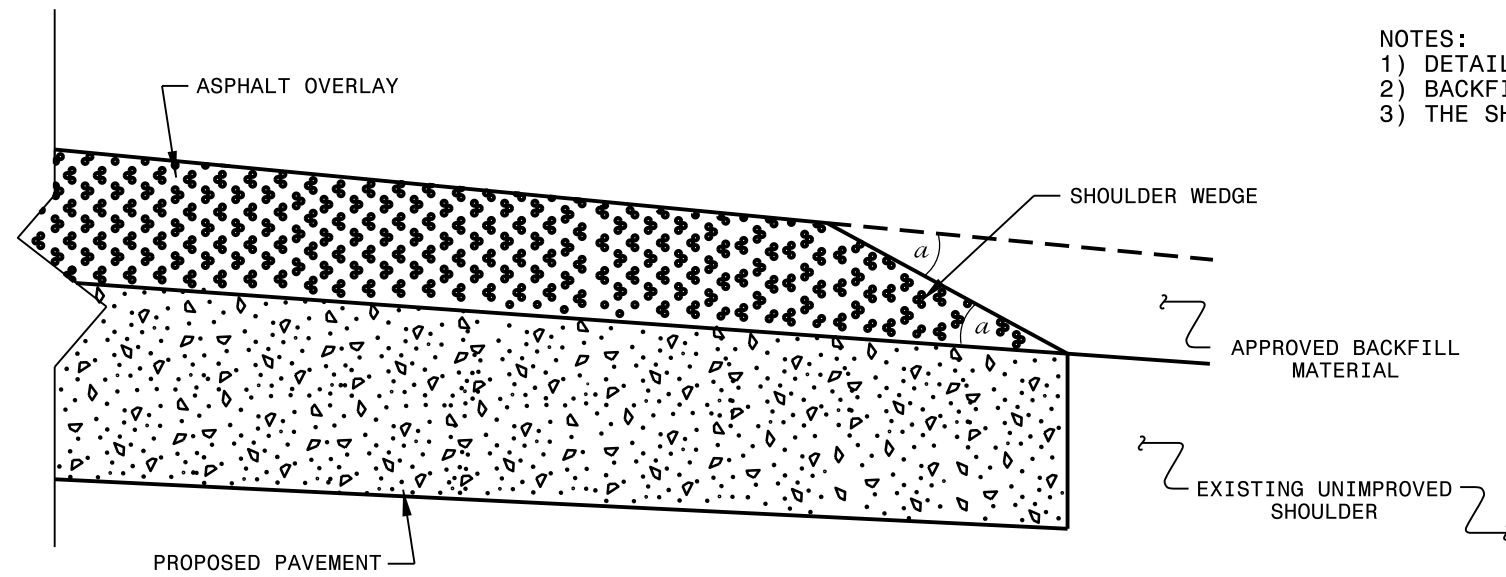


TYPICAL SECTION NO. 2

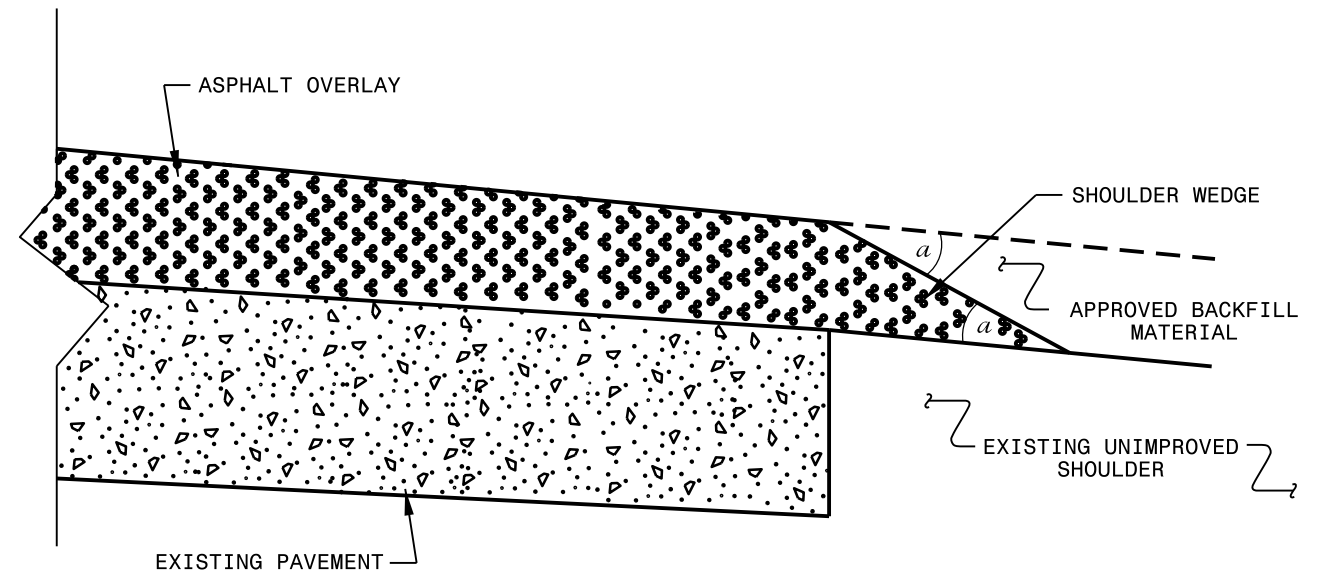
USE WITH MAP 1

NTS

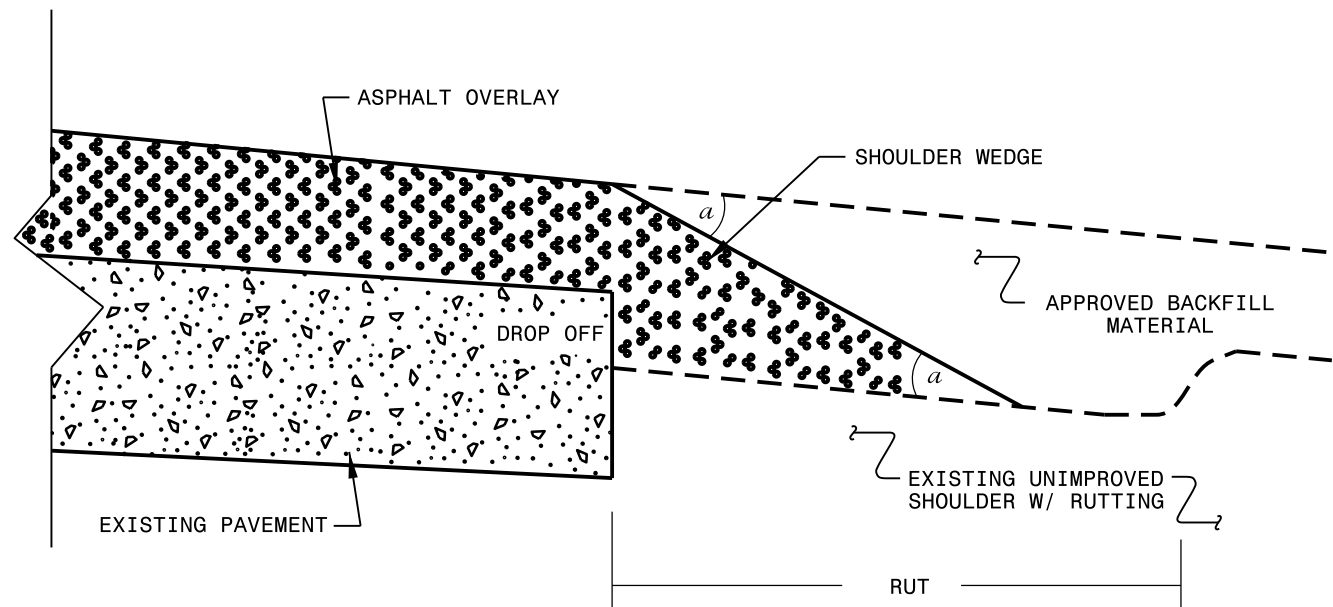
- NOTES:
- 1) DETAIL DOES NOT APPLY TO OGAFc AND ULTRA-THIN BONDED WEARING COURSE.
 - 2) BACKFILL SHOULDER WITH APPROVED MATERIAL.
 - 3) THE SHOULDER WEDGE DEVICE MAY BE DISENGAGED AT PAVED DRIVEWAYS AND SIDE STREETS.



SHOULDER WEDGE DETAIL
(Resurfacing Projects w/ Widening or
with Existing Paved Shoulder having no dropoffs)



SHOULDER WEDGE DETAIL
(Resurfacing Projects w/ NO Widening)



SHOULDER WEDGE DETAIL
(Resurfacing Adjacent to
Rutted Shoulder)

- SHOULDER WEDGE ANGLE = 30°

CONTRACT STANDARDS AND DEVELOPMENT UNIT	
Office 919-707-6950	FAX 919-250-4119
SHOULDER WEDGE DETAILS	
ORIGINAL BY: T.SPELL	DATE: 7-19-11
MODIFIED BY:	DATE: 10/16/12
CHECKED BY:	DATE:
FILE SPEC.: s:\usr\details\stand\shoulderwedgedetail.dgn	

PROJECT NO.	SHEET NO.	TOTAL NO.
1CR.20371.41, ETC	8	8

SUMMARY OF QUANTITIES

PROJECT NO	COUNTY	MAP NO	ROUTE	DESCRIPTION	TYP NO	LANES	LANE TYPE	FINAL SURFACE TESTING REQUIRED	WARM MIX ASPHALT REQUIRED	LENGTH MI	WIDTH FT	MOBILIZATION LS	INCIDENTAL STONE BASE TONS	1 1/2" MILLING SY	INCIDENTAL MILLING SY	SURFACE COURSE, SF9.5A TONS	ASPHALT BINDER FOR PLANT MIX TONS	TEMPORARY TRAFFIC CONTROL LS
1CR.20371.41	Gates	1	SR 1304 WILLEYTON RD	FROM SR 1303 NORTH TO BRIDGE #15	2	2	2WU	NO	NO	0.23	20	1		1,200	125	290	19	1
2016CPT.01.11.20371.1	Gates	2	SR 1336 LIGHT STREAK RD	FROM US 158 TO SR 1002 FOLLY RD	1	2	2WU	NO	NO	1.02	20	*	20			1,093	73	*
2016CPT.01.11.20371.2	Gates	3	SR 1303 PARKER RD	SR1300 TO NC 37	1	2	2WU	NO	NO	2.39	20	*	20			2,561	172	*
2016CPT.01.11.20371.3	Gates	4	SR 1215 TYLER RD	FROM NC 37 TO US 13	1	2	2WU	NO	NO	0.83	20	*	15			889	60	*
2016CPT.01.11.20721.1	Perquimans	5	SR 1300 NEW HOPE RD	FROM SR 1302 TO SR 1329	1	2	2WU	NO	NO	4.46	19	*	100			4,761	319	*
2016CPT.01.11.20721.2	Perquimans	6	SR 1352 LOWE DR	FROM SR 1336 TO DEAD END	1	2	2WU	NO	NO	0.39	19.5	*	5			376	25	*
2016CPT.01.11.20721.3	Perquimans	7	SR 1117 BEECH SPRINGS RD	FROM SR 1111 TO SR 1116	1	2	2WU	NO	NO	0.92	18	*	18			890	60	*
2016CPT.01.11.20721.4	Perquimans	8	SR 1222 LOWE'S LANE	FROM SR 1221 TO SR 1223	1	2	2WU	NO	NO	1.29	20	*	10			1,382	93	*
30001.13	Gates	9	MERCHANTS MILL POND CAMPGROUND	FROM US 158 TO END	1	2	2WU	NO	NO	0.75	21	*				638	43	
30001.13	Gates	10	MERCHANTS MILL POND BOAT LAUNCH	FROM SR 1400 TO BOAT LAUNCH	1	2	2WU	NO	NO	0.06	100	*				266	18	
GRAND TOTAL										12.34		1	188	1,200	125	13,146	882	1