

CONTRACT NO.: DA00282 WBS ELEMENT: 2016CPT.01.20.20371.1, ETC.

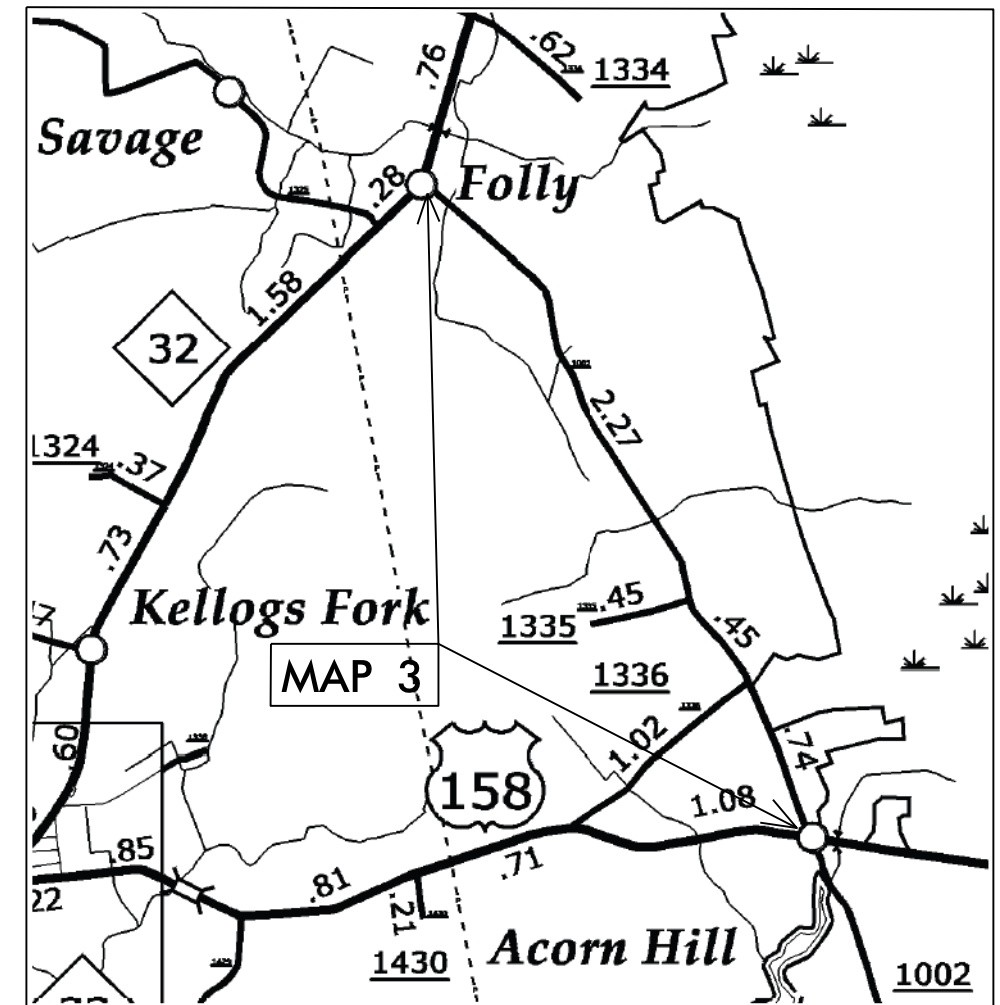
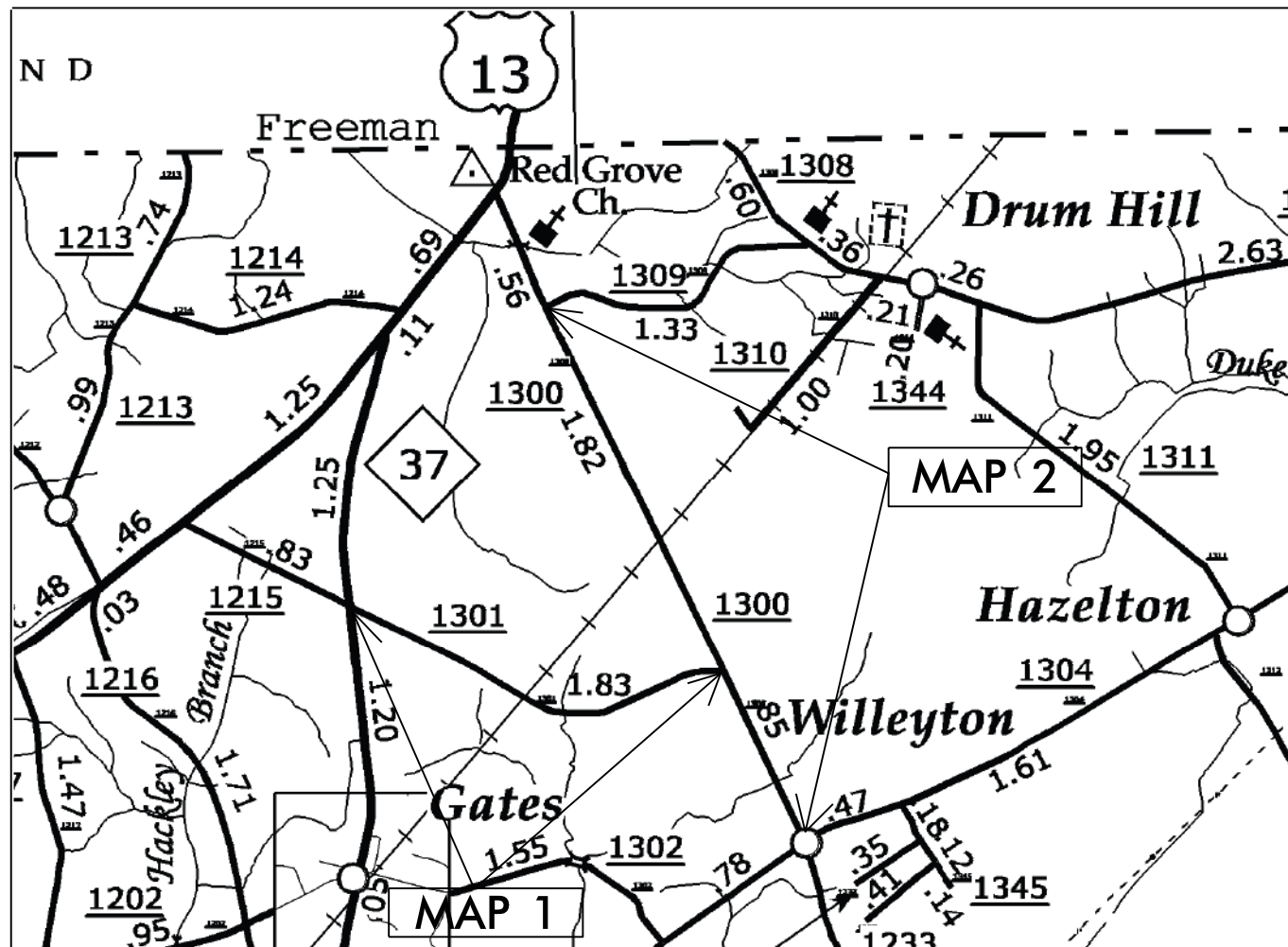
STATE OF NORTH CAROLINA  
DIVISION OF HIGHWAYS

**GATES COUNTY**

LOCATION: MAP 1 SR 1301 JOHNNY HARRELL ROAD FROM SR 1300 TO NC 37  
 MAP 2 SR 1300 PAIGE RIDDICK ROAD FROM SR 1304 TO SR 1309  
 MAP 3 SR 1002 FOLLY ROAD FROM US 158 TO NC 32

TYPE OF WORK: RESURFACING & SHOULDER RECONSTRUCTION

STATE	STATE PROJECT REFERENCE NO.	SHEET NO.	TOTAL SHEETS
N.C.	2016CPT.01.20.20371.1, ETC.	1	7
STATE PROJ. NO.	F.A. PROJ. NO.	DESCRIPTION	
2016CPT.01.20.20371.1		MAP 1	
2016CPT.01.20.20371.2		MAP 2	
2016CPT.01.20.20371.3		MAP 3	



**NTS**

PROJECT LENGTH

LENGTH OF ROADWAY PROJECT MAP 1 = 1.80 MI.  
 LENGTH OF ROADWAY PROJECT MAP 2 = 2.70 MI.  
 LENGTH OF ROADWAY PROJECT MAP 3 = 3.46 MI.

Prepared in the Office of:  
**DIVISION OF HIGHWAYS**

113 Airport Dr., Edenton NC, 27932

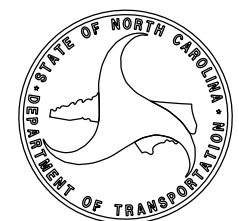
2012 STANDARD SPECIFICATIONS

LETTING DATE:

W.B. HOBBS, P.E.  
DIVISION PROJECT MANAGER

C.E. SLACHTA  
DIVISION PROPOSALS ENGINEER

DIVISION OF HIGHWAYS  
STATE OF NORTH CAROLINA



09/08/99

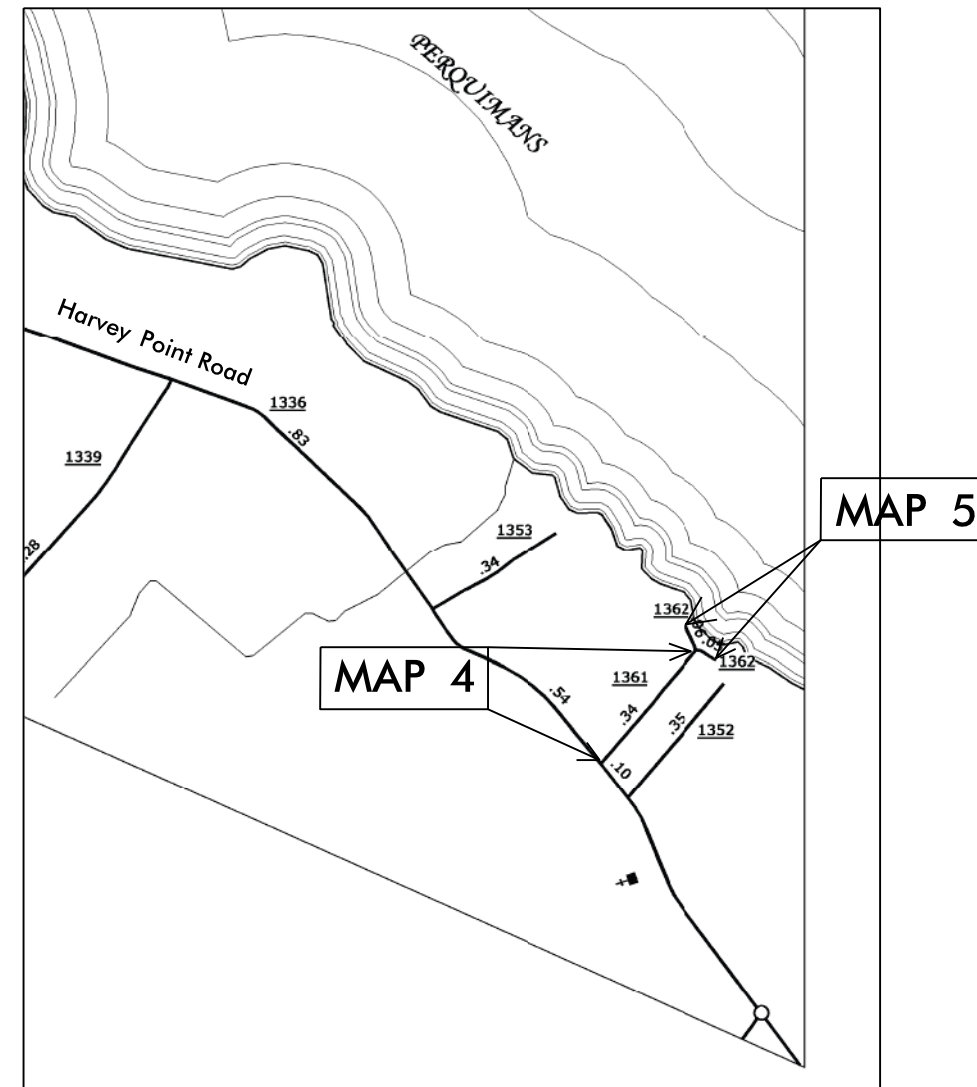
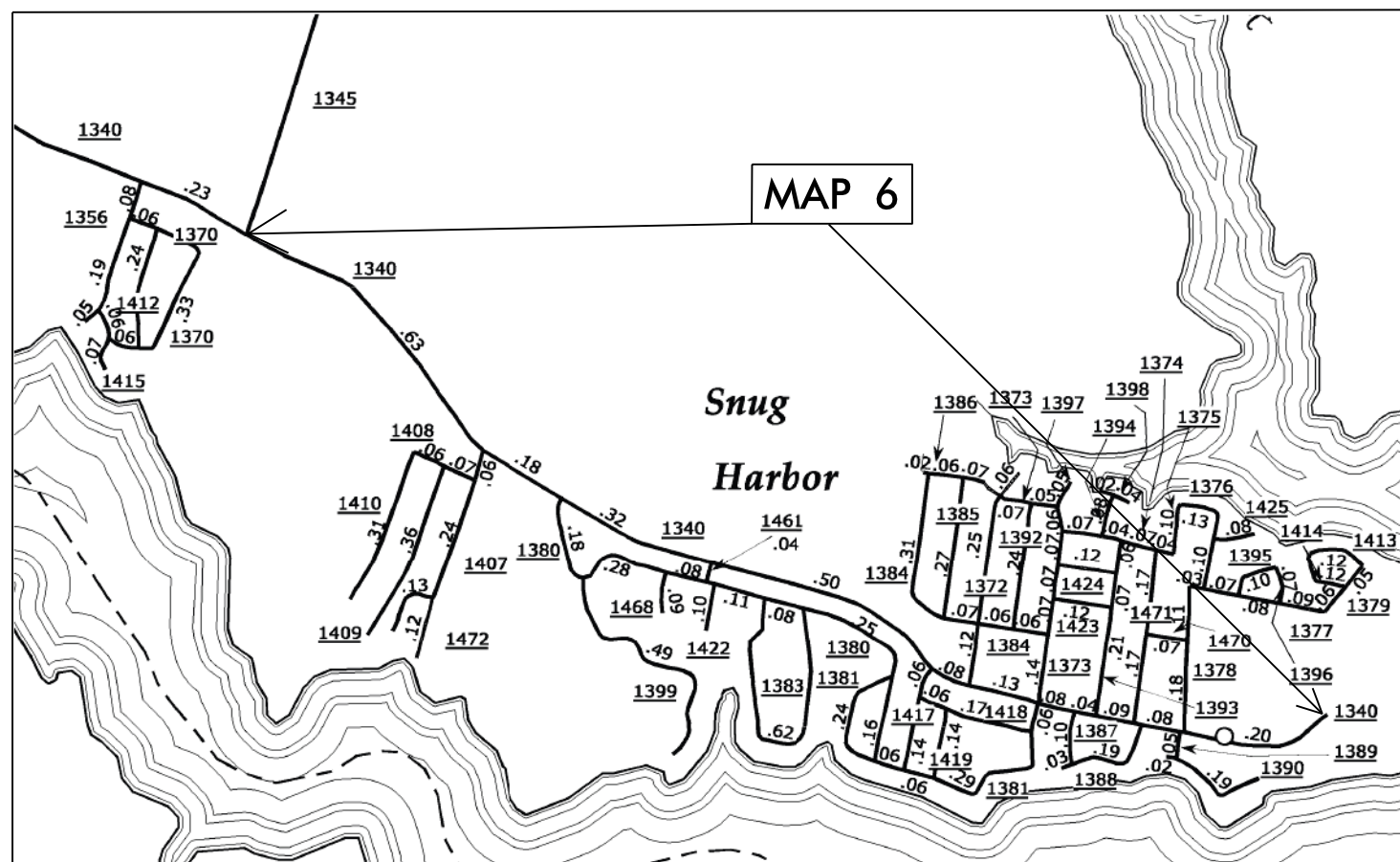
CONTRACT NO.: DA00282 WBS ELEMENT: 2016CPT.01.20.20371.1, ETC

STATE OF NORTH CAROLINA  
DIVISION OF HIGHWAYS

**PERQUIMANS COUNTY**

LOCATION: MAP 4 SR 1361 THIRD STREET FROM SR 1336 TO DEAD END  
MAP 5 SR 1362 SHORE DRIVE FROM DEAD END TO DEAD END  
MAP 6 SR 1340 SNUG HARBOR ROAD FROM SR 1345 TO END OF PAVEMENT  
TYPE OF WORK: RESURFACING & SHOULDER RECONSTRUCTION

STATE	STATE PROJECT REFERENCE NO.	SHEET NO.	TOTAL SHEETS
N.C.	2016CPT.01.20.20371.1, ETC	2	7
STATE PROJ. NO.	F.A. PROJ. NO.	DESCRIPTION	
2016CPT.01.20.20721.1		MAP 4	
2016CPT.01.20.20721.2		MAP 5	
2016CPT.01.20.20721.3		MAP 6	



**NTS**

PROJECT LENGTH

LENGTH OF ROADWAY PROJECT MAP 4 = 0.32 MI.  
LENGTH OF ROADWAY PROJECT MAP 5 = 0.13 MI.  
LENGTH OF ROADWAY PROJECT MAP 6 = 2.44 MI.

Prepared in the Office of:  
**DIVISION OF HIGHWAYS**

113 Airport Dr., Edenton NC, 27932

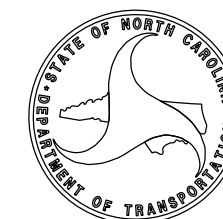
2012 STANDARD SPECIFICATIONS

LETTING DATE:

W. B. HOBBS, P.E.  
DIVISION PROJECT MANAGER

C. E. SLACHTA  
DIVISION PROPOSALS ENGINEER

DIVISION OF HIGHWAYS  
STATE OF NORTH CAROLINA



DRAWN BY: BJT

# C O N T R A C T P A V E M E N T S C H E D U L E

C1	PROP. APPROX. 1½" ASPHALT CONCRETE SURFACE COURSE, TYPE SF9.5A, AT AN AVERAGE RATE OF 165 LBS. PER SQ. YD.
U	EXISTING PAVEMENT.
T	EARTH MATERIAL







PROJECT NO.	SHEET NO.	TOTAL NO.
2016CPT.01.20.20371.1	7	

## SUMMARY OF QUANTITIES

PROJECT NO	COUNTY	MAP NO	ROUTE	DESCRIPTION	TYP NO	LANES	LANE TYPE	FINAL SURFACE TESTING REQUIRED	WARM MIX ASPHALT REQUIRED	LENGTH MI	WIDTH FT	MOBILIZATION LS	BORROW CY	INCIDENTAL STONE BASE TONS	SHOULDER RECONSTRUCTION SMI	SURFACE COURSE, SF9.5A TONS	ASPHALT BINDER FOR PLANT MIX TONS	SEED & MULCHING ACR	TRAFFIC CONTROL LS
2016CPT.01.20.20371.1	Gates	1	SR 1301 JOHNNY HARRELL	FROM SR 1300 TO NC 37	1	2	2WU	NO	NO	1.8	20.5	1	700	40	3.60	1,977	132	1.5	1
2016CPT.01.20.20371.2	Gates	2	SR 1300 PAIGE RIDDICK	FROM SR 1304 TO SR 1309	1	2	2WU	NO	NO	2.7	20.5	*	1,000	70	5.40	2,965	199	2.5	*
2016CPT.01.20.20371.3	Gates	3	SR 1002 FOLLY ROAD	FROM US 158 TO NC 32	1	2	2WU	NO	NO	3.46	20	*	1,400	75	7.00	4,168	279	3.5	*
2016CPT.01.20.20721.1	Perquimans	4	SR 1361 THIRD ST	FROM SR 1336 TO DEAD END	1	2	2WU	NO	NO	0.32	18	*	100	10	0.60	309	21	0.3	*
2016CPT.01.20.20721.2	Perquimans	5	SR 1362 SHORE DR	FROM DEAD END TO DEAD END	1	2	2WU	NO	NO	0.13	18	*	50	10	0.25	125	8	0.1	*
2016CPT.01.20.20721.3	Perquimans	6	SR 1340 SNUG HARBOR RD	FROM SR 1345 TO END OF PAVEMENT	1	2	2WU	NO	NO	2.44	20	*	800	50	4.88	2,852	191	2.3	*
<b>GRAND TOTAL</b>										<b>10.85</b>		<b>1</b>	<b>4,050</b>	<b>255</b>	<b>21.73</b>	<b>12,396</b>	<b>830</b>	<b>10.1</b>	<b>1</b>