

STATE OF NORTH CAROLINA  
 DIVISION OF HIGHWAYS  
**UNION COUNTY**

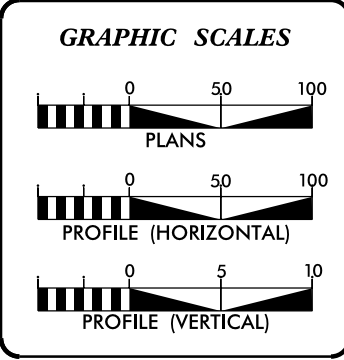
STATE	STATE PROJECT REFERENCE NO.	SHEET NO.	TOTAL SHEETS
N.C.	10B.209011	1	
STATE PROJ. NO.	F.A. PROJ. NO.	DESCRIPTION	
		P.E.	
		R/W	
		CONST.	

**LOCATION:** VARIOUS LOCATIONS

**TYPE OF WORK:** REMOVE AND REPLACE STRUCTURAL PIPE



**PROJECT: 10B.209011**



**DESIGN DATA**

ADT	=	
ADT	=	
DHV	=	N/A %
D	=	N/A %
T	=	N/A %
V	=	N/A MPH

**PROJECT LENGTH**

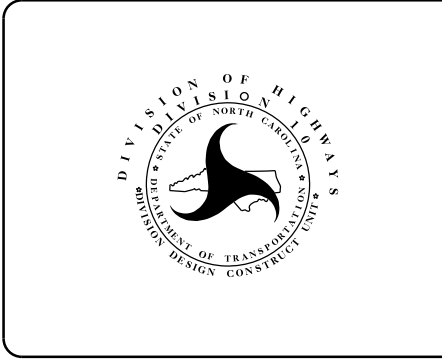
LENGTH OF ROADWAY PROJECT 10B.209011	=	VARIES MILES
TOTAL LENGTH OF STATE PROJECT 10B.209011	=	VARIES MILES

Prepared In the Office of:  
**DIVISION OF HIGHWAYS**  
 DIVISION TEN  
 DIVISION DESIGN / CONSTRUCT UNIT

---

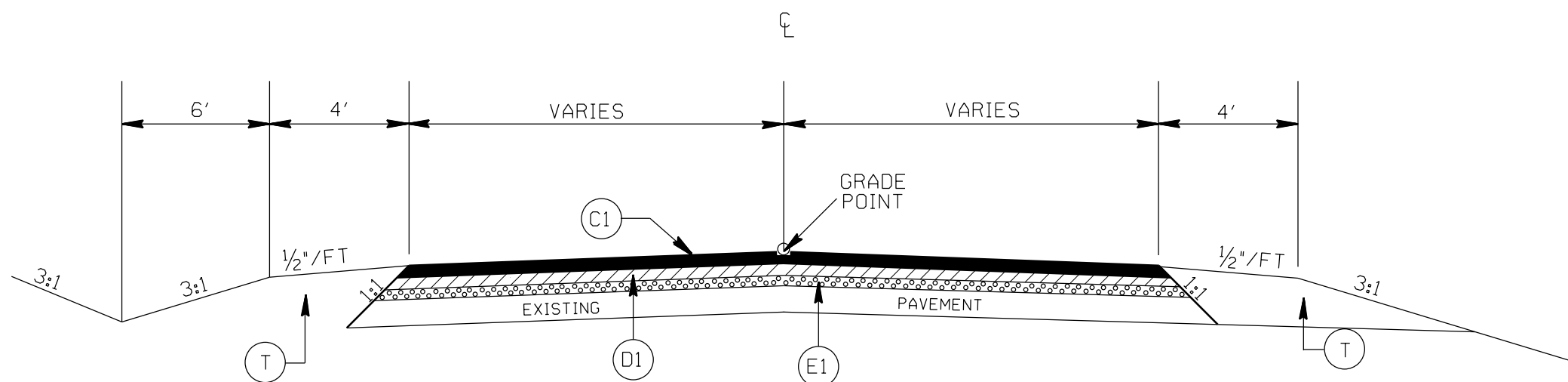
2018 STANDARD SPECIFICATIONS

RIGHT OF WAY DATE:	TERRY BURLESON PROJECT ENGINEER
LETTING DATE: JANUARY 17, 2018	PROJECT DESIGN ENGINEER



DIVISION OF HIGHWAYS  
 STATE OF NORTH CAROLINA

APPROVED BY \_\_\_\_\_ DATE \_\_\_\_\_  
 DDC ENGINEER



TYPICAL SECTION NO. 1

### PAVEMENT SCHEDULE

(C1)	PROP. APPROX. 1.5" ASPHALT CONC. SURFACE COURSE, TYPE S9.5B, AT AN AVERAGE RATE OF 168 LBS. PER SQ. YD.
(D1)	PROP. APPROX. 2.5" ASPHALT CONC. INTERMEDIATE COURSE, TYPE I19.0B, AT AN AVERAGE RATE OF 285 LBS. PER SQ. YD.
(E1)	PROP. APPROX. 4" ASPHALT CONC. BASE COURSE, TYPE B25.0B, AT AN AVERAGE RATE OF 456 LBS. PER SQ. YD.
(T)	EARTH MATERIAL

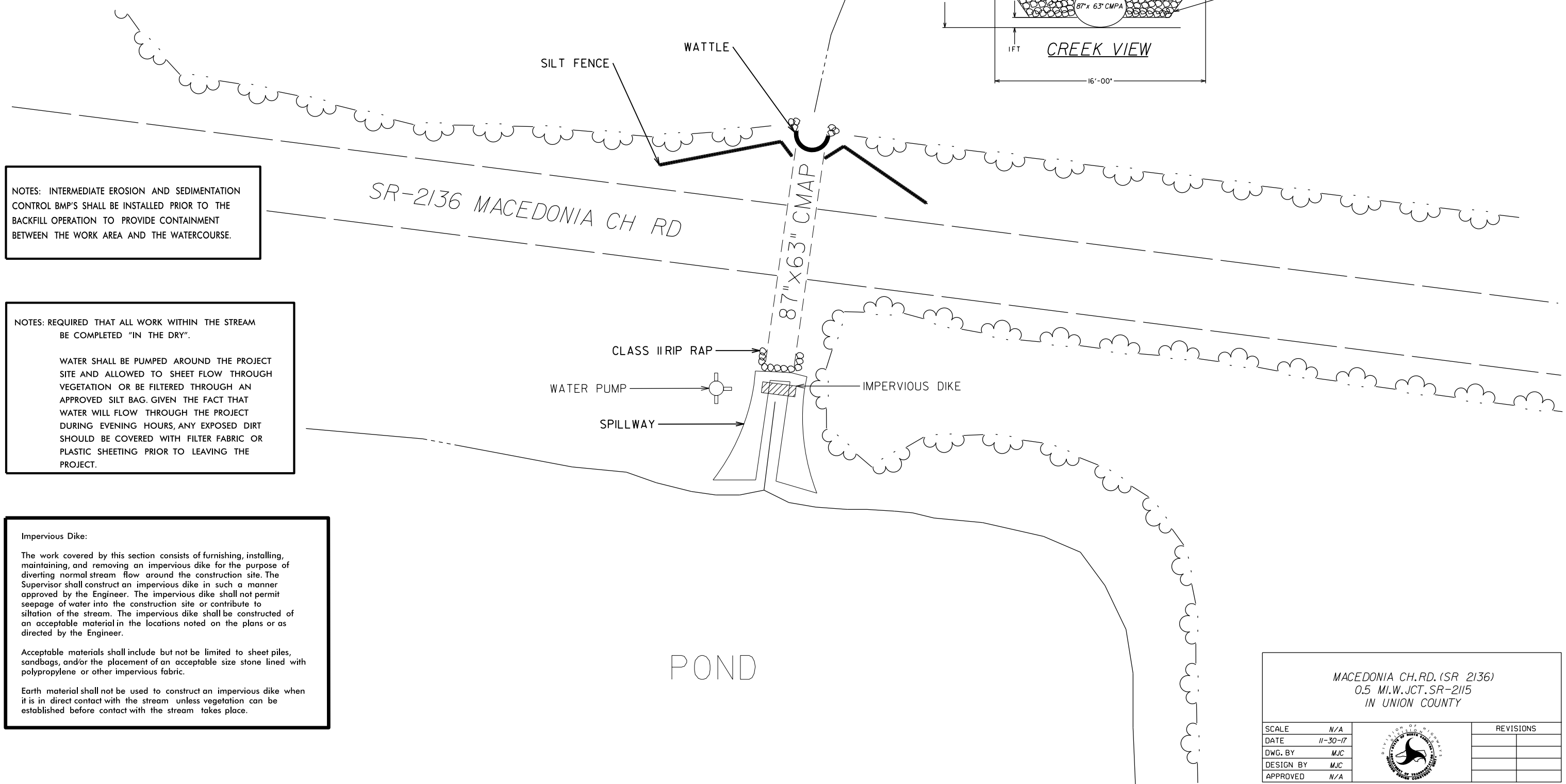
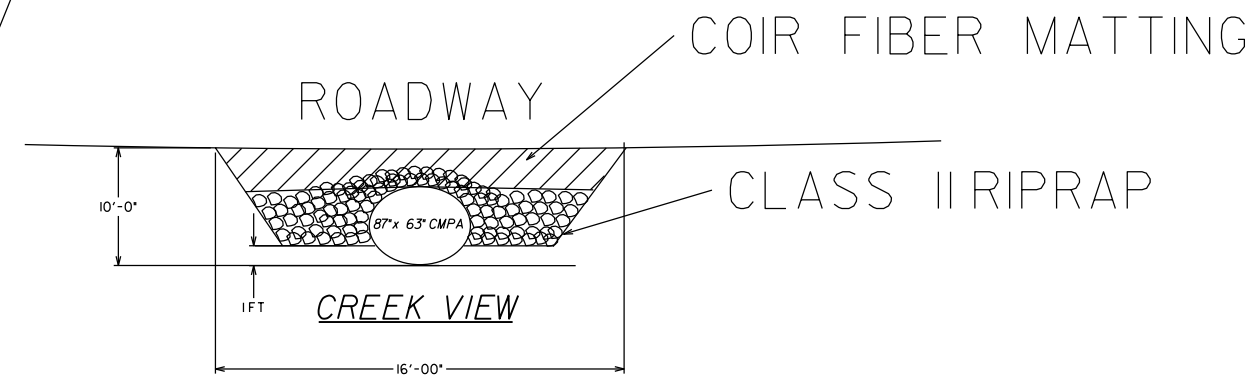
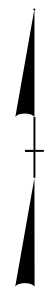
REMOVE AND REPLACE STRUCTURAL PIPE

SCALE  $r=50'$   
 DATE DEC 2017  
 DWG. BY TBL  
 DESIGN BY TWB  
 APPROVED TWB



REVISIONS	

STATE	PROJECT NO.	SHEET NO.	TOTAL SHEETS
N.C.	10B.209011	3	
F.A. PROJECT NO.			



NOTES: INTERMEDIATE EROSION AND SEDIMENTATION CONTROL BMP'S SHALL BE INSTALLED PRIOR TO THE BACKFILL OPERATION TO PROVIDE CONTAINMENT BETWEEN THE WORK AREA AND THE WATERCOURSE.

NOTES: REQUIRED THAT ALL WORK WITHIN THE STREAM BE COMPLETED "IN THE DRY".

WATER SHALL BE PUMPED AROUND THE PROJECT SITE AND ALLOWED TO SHEET FLOW THROUGH VEGETATION OR BE FILTERED THROUGH AN APPROVED SILT BAG. GIVEN THE FACT THAT WATER WILL FLOW THROUGH THE PROJECT DURING EVENING HOURS, ANY EXPOSED DIRT SHOULD BE COVERED WITH FILTER FABRIC OR PLASTIC SHEETING PRIOR TO LEAVING THE PROJECT.

**Impervious Dike:**

The work covered by this section consists of furnishing, installing, maintaining, and removing an impervious dike for the purpose of diverting normal stream flow around the construction site. The Supervisor shall construct an impervious dike in such a manner approved by the Engineer. The impervious dike shall not permit seepage of water into the construction site or contribute to siltation of the stream. The impervious dike shall be constructed of an acceptable material in the locations noted on the plans or as directed by the Engineer.

Acceptable materials shall include but not be limited to sheet piles, sandbags, and/or the placement of an acceptable size stone lined with polypropylene or other impervious fabric.

Earth material shall not be used to construct an impervious dike when it is in direct contact with the stream unless vegetation can be established before contact with the stream takes place.

MACEDONIA CH. RD. (SR 2136) 0.5 MI. W. JCT. SR-2115 IN UNION COUNTY		
SCALE	N/A	
DATE	11-30-17	
DWG. BY	MJC	
DESIGN BY	MJC	
APPROVED	N/A	
		REVISIONS

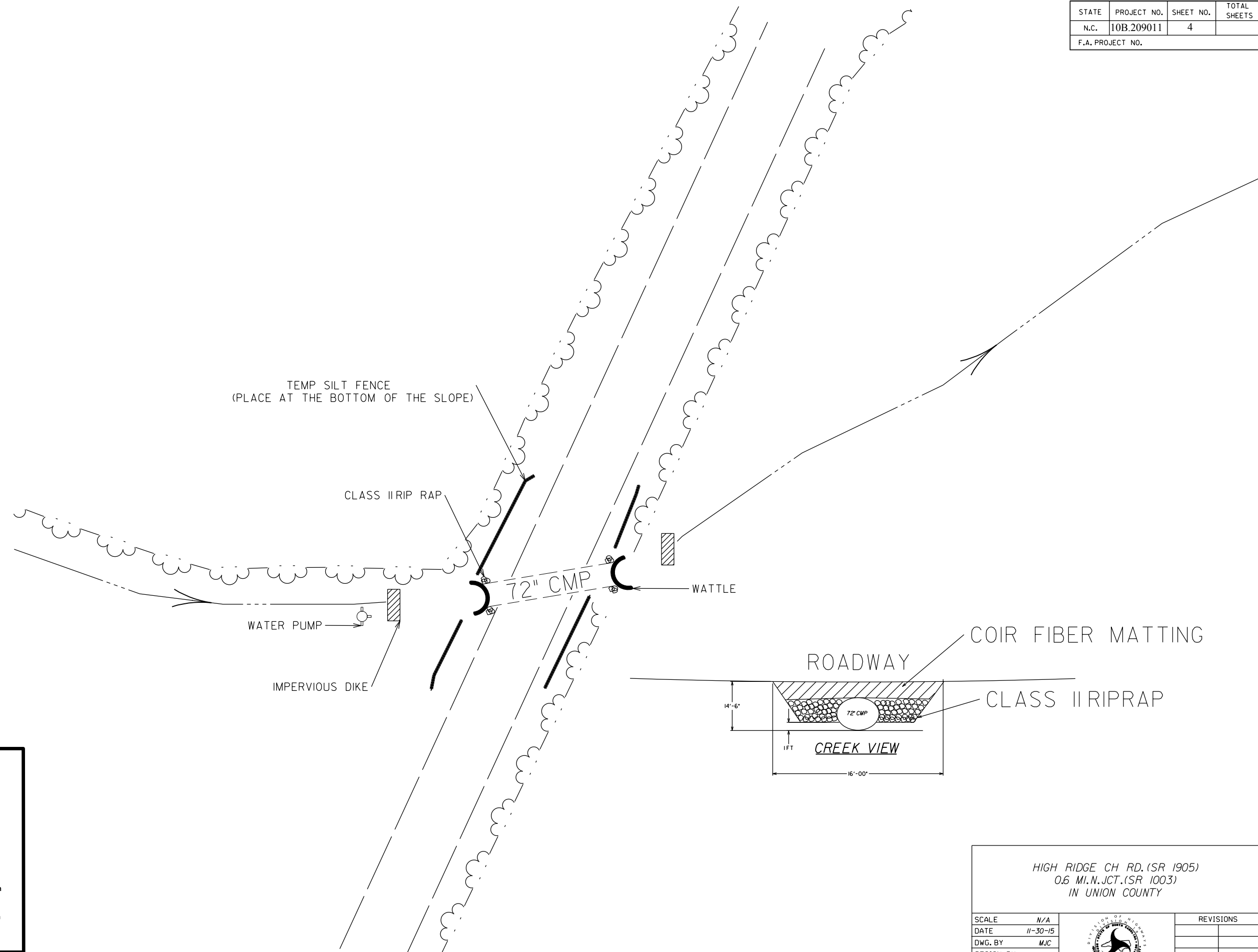
STATE	PROJECT NO.	SHEET NO.	TOTAL SHEETS
N.C.	10B.209011	4	
F.A. PROJECT NO.			



NOTES: INTERMEDIATE EROSION AND SEDIMENTATION CONTROL BMP'S SHALL BE INSTALLED PRIOR TO THE BACKFILL OPERATION TO PROVIDE CONTAINMENT BETWEEN THE WORK AREA AND THE WATERCOURSE.

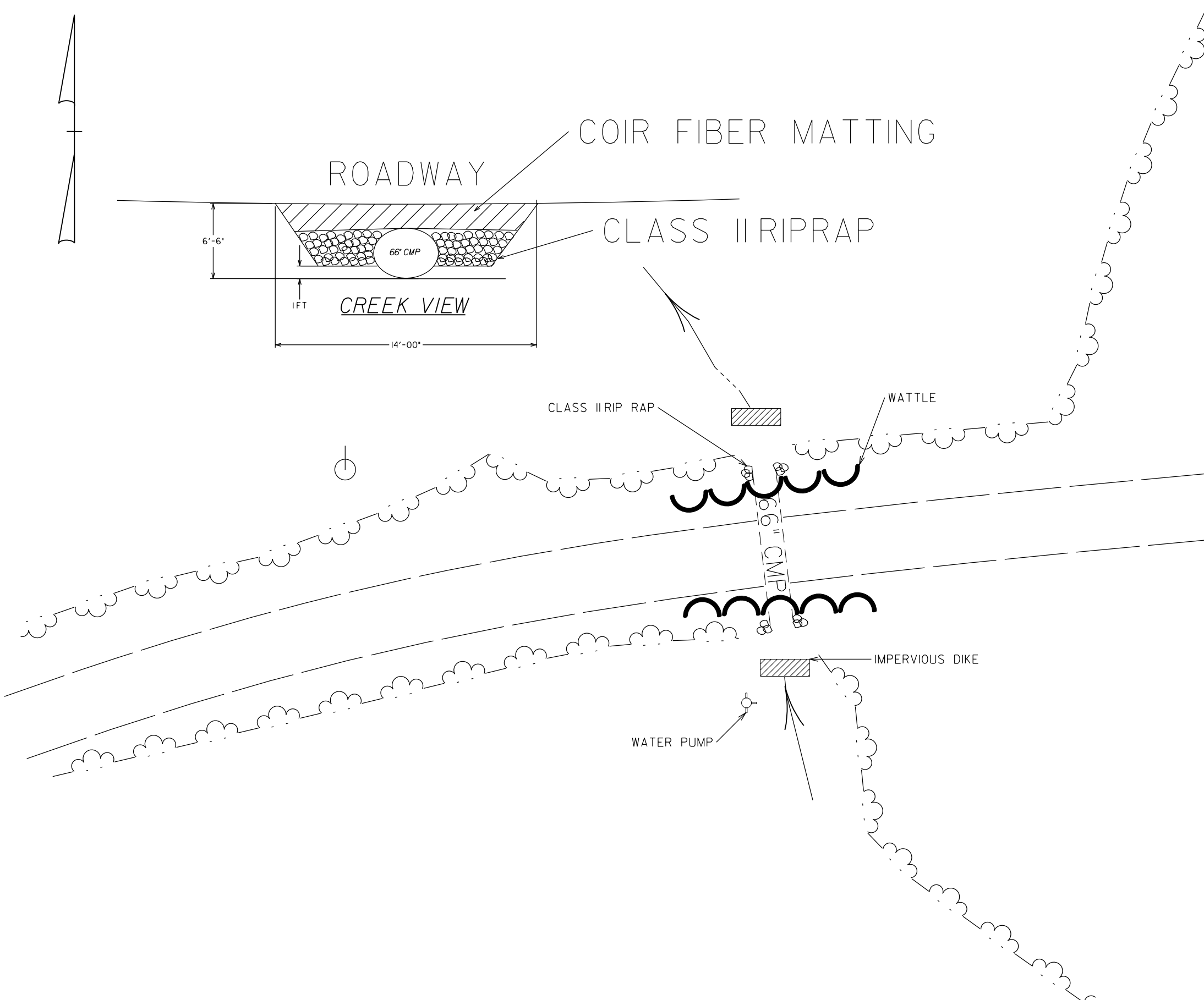
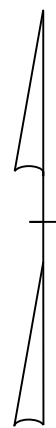
NOTES: REQUIRED THAT ALL WORK WITHIN THE STREAM BE COMPLETED "IN THE DRY".  
  
WATER SHALL BE PUMPED AROUND THE PROJECT SITE AND ALLOWED TO SHEET FLOW THROUGH VEGETATION OR BE FILTERED THROUGH AN APPROVED SILT BAG. GIVEN THE FACT THAT WATER WILL FLOW THROUGH THE PROJECT DURING EVENING HOURS, ANY EXPOSED DIRT SHOULD BE COVERED WITH FILTER FABRIC OR PLASTIC SHEETING PRIOR TO LEAVING THE PROJECT.

**Impervious Dike:**  
The work covered by this section consists of furnishing, installing, maintaining, and removing an impervious dike for the purpose of diverting normal stream flow around the construction site. The Supervisor shall construct an impervious dike in such a manner approved by the Engineer. The impervious dike shall not permit seepage of water into the construction site or contribute to siltation of the stream. The impervious dike shall be constructed of an acceptable material in the locations noted on the plans or as directed by the Engineer.  
  
Acceptable materials shall include but not be limited to sheet piles, sandbags, and/or the placement of an acceptable size stone lined with polypropylene or other impervious fabric.  
  
Earth material shall not be used to construct an impervious dike when it is in direct contact with the stream unless vegetation can be established before contact with the stream takes place.



HIGH RIDGE CH RD. (SR 1905) 0.6 MI. N. JCT. (SR 1003) IN UNION COUNTY		
SCALE	N/A	
DATE	11-30-15	
DWG. BY	MJC	
DESIGN BY	MJC	
APPROVED	N/A	
		REVISIONS

STATE	PROJECT NO.	SHEET NO.	TOTAL SHEETS
N.C.	10B.209011	5	
F.A. PROJECT NO.			



NOTES: STAGE ALL WORK SO THAT NC DOT BMP'S ARE ADHERED TO DURING REMOVAL OF EXISTING STRUCTURE AND INSTALLATION OF THE NEW STRUCTURE. USE EXTRA MEASURES TO ENSURE THAT ERODING SOILS ARE NOT AN ISSUE.

NOTES: REQUIRED THAT ALL WORK WITHIN THE STREAM BE COMPLETED "IN THE DRY".

WATER SHALL BE PUMPED AROUND THE PROJECT SITE AND ALLOWED TO SHEET FLOW THROUGH VEGETATION OR BE FILTERED THROUGH AN APPROVED SILT BAG. GIVEN THE FACT THAT WATER WILL FLOW THROUGH THE PROJECT DURING EVENING HOURS, ANY EXPOSED DIRT SHOULD BE COVERED WITH FILTER FABRIC OR PLASTIC SHEETING PRIOR TO LEAVING THE PROJECT.

**Impervious Dike:**

The work covered by this section consists of furnishing, installing, maintaining, and removing an impervious dike for the purpose of diverting normal stream flow around the construction site. The Supervisor shall construct an impervious dike in such a manner approved by the Engineer. The impervious dike shall not permit seepage of water into the construction site or contribute to siltation of the stream. The impervious dike shall be constructed of an acceptable material in the locations noted on the plans or as directed by the Engineer.

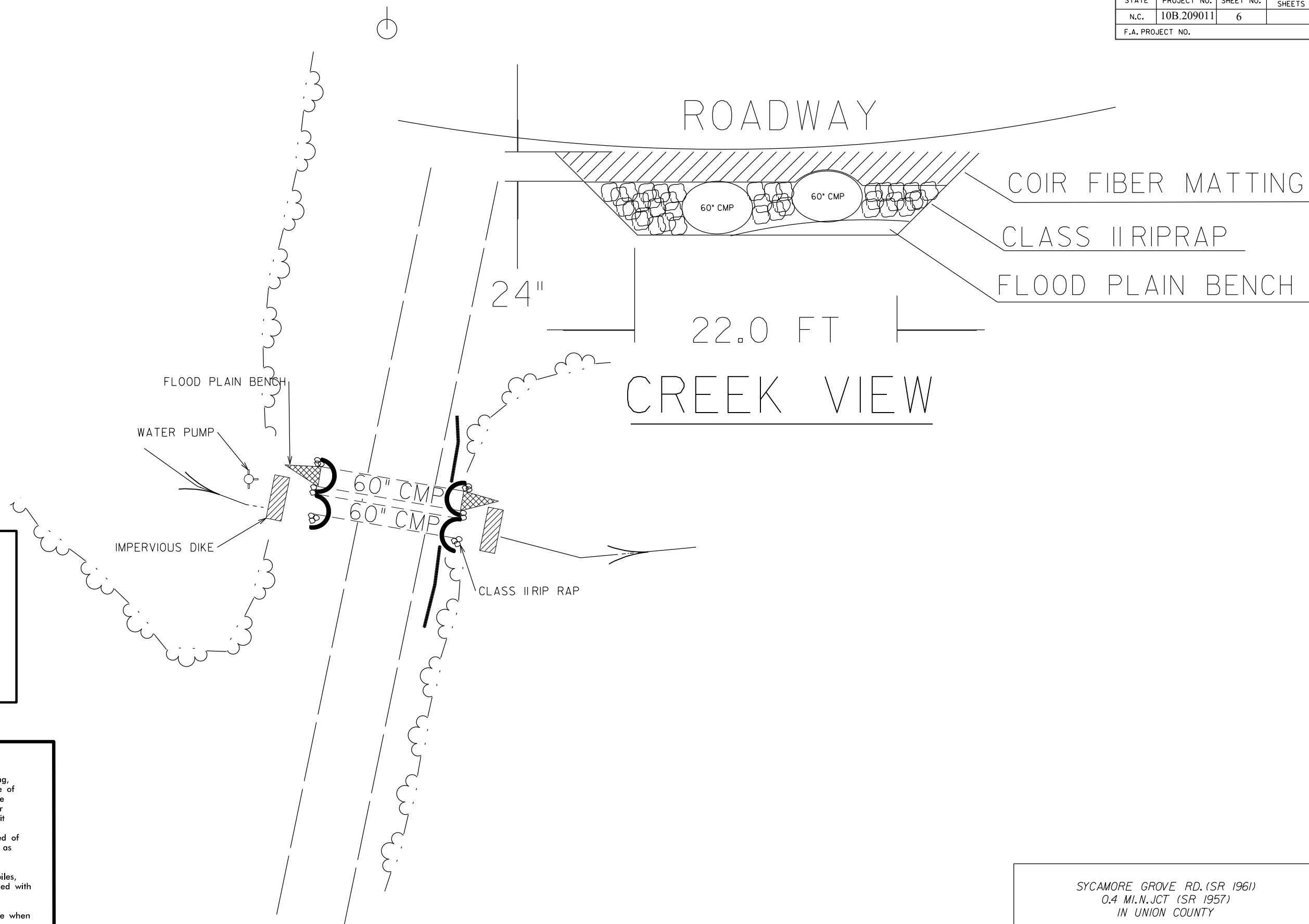
Acceptable materials shall include but not be limited to sheet piles, sandbags, and/or the placement of an acceptable size stone lined with polypropylene or other impervious fabric.

Earth material shall not be used to construct an impervious dike when it is in direct contact with the stream unless vegetation can be established before contact with the stream takes place.

TRINITY CH RD. (SR 2153)  
0.6 MI. NE JCT. (SR 2156)  
IN UNION COUNTY

SCALE	1"=50'		REVISIONS	
DATE	12-01-17			
DWG. BY	MJC			
DESIGN BY	MJC			
APPROVED	N/A			

STATE	PROJECT NO.	SHEET NO.	TOTAL SHEETS
N.C.	10B.209011	6	
F.A. PROJECT NO.			



NOTES: STAGE ALL WORK SO THAT NC DOT BMP'S ARE ADHERED TO DURING REMOVAL OF EXISTING STRUCTURE AND INSTALLATION OF THE NEW STRUCTURE. USE EXTRA MEASURES TO ENSURE THAT ERODING SOILS ARE NOT AN ISSUE.

NOTES: REQUIRED THAT ALL WORK WITHIN THE STREAM BE COMPLETED "IN THE DRY".


WATER SHALL BE PUMPED AROUND THE PROJECT SITE AND ALLOWED TO SHEET FLOW THROUGH VEGETATION OR BE FILTERED THROUGH AN APPROVED SILT BAG. GIVEN THE FACT THAT WATER WILL FLOW THROUGH THE PROJECT DURING EVENING HOURS, ANY EXPOSED DIRT SHOULD BE COVERED WITH FILTER FABRIC OR PLASTIC SHEETING PRIOR TO LEAVING THE PROJECT.

**Impervious Dike:**

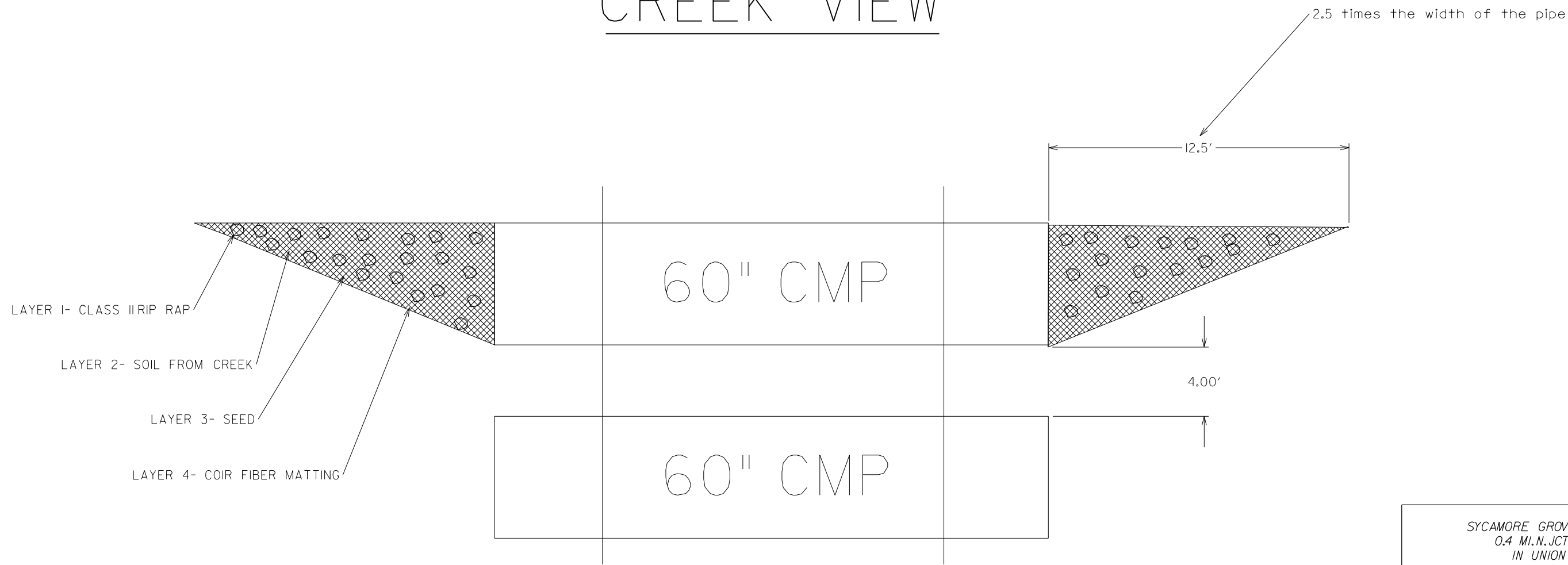
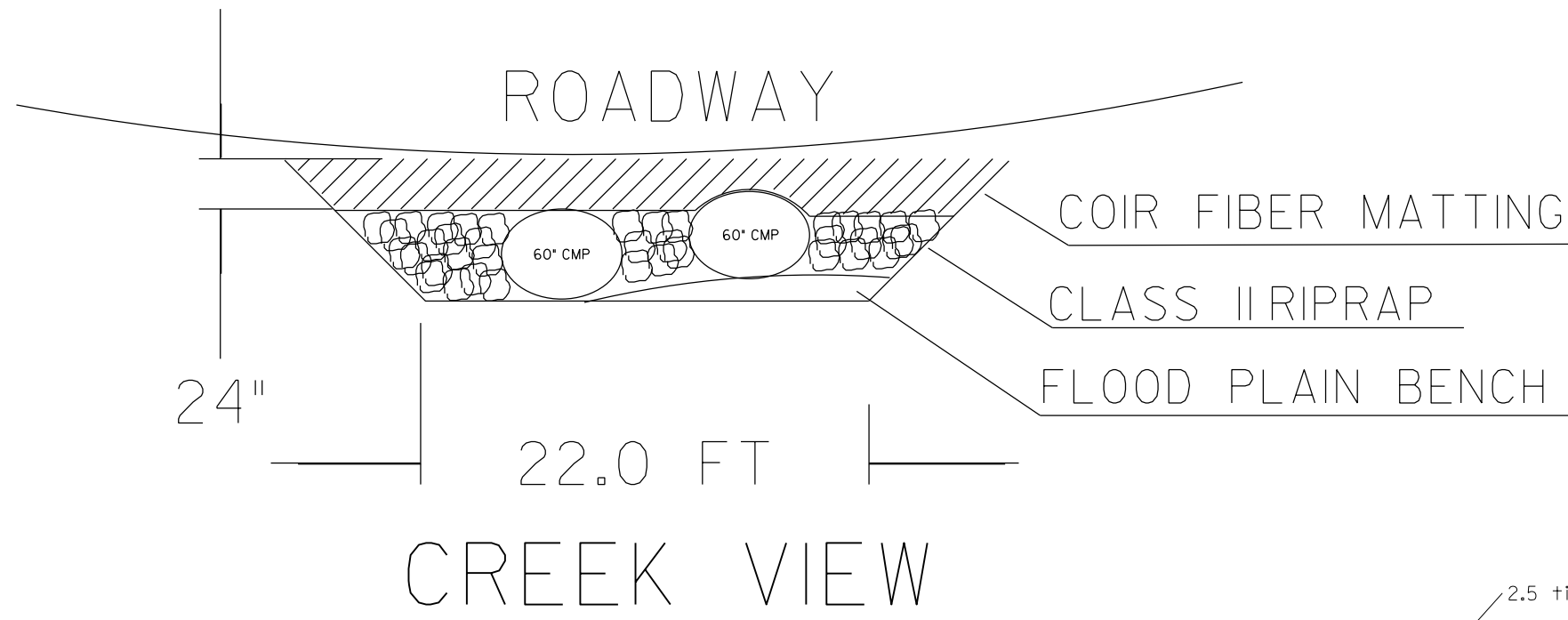
The work covered by this section consists of furnishing, installing, maintaining, and removing an impervious dike for the purpose of diverting normal stream flow around the construction site. The Supervisor shall construct an impervious dike in such a manner approved by the Engineer. The impervious dike shall not permit seepage of water into the construction site or contribute to siltation of the stream. The impervious dike shall be constructed of an acceptable material in the locations noted on the plans or as directed by the Engineer.

Acceptable materials shall include but not be limited to sheet piles, sandbags, and/or the placement of an acceptable size stone lined with polypropylene or other impervious fabric.

Earth material shall not be used to construct an impervious dike when it is in direct contact with the stream unless vegetation can be established before contact with the stream takes place.

SYCAMORE GROVE RD. (SR 1961) 0.4 MI. N. JCT (SR 1957) IN UNION COUNTY		
SCALE	1"=50'	
DATE	12-01-17	
DWG. BY	MJC	
DESIGN BY	MJC	
APPROVED	N/A	
REVISIONS		

STATE	PROJECT NO.	SHEET NO.	TOTAL SHEETS
N.C.	10B.209011	7	
F.A. PROJECT NO.			



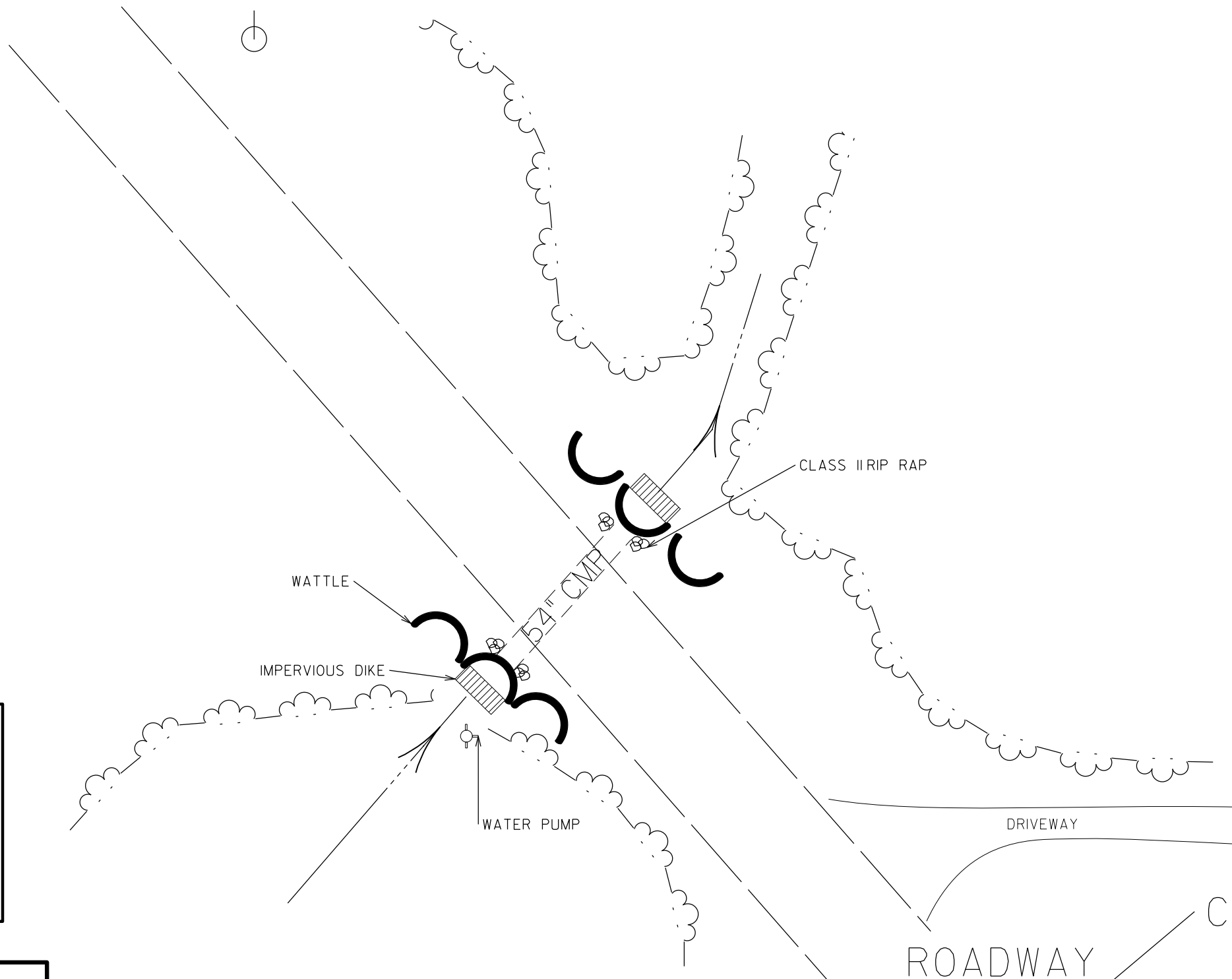
SYCAMORE GROVE RD. (SR 1961)  
 0.4 MI. N. JCT (SR 1957)  
 IN UNION COUNTY

SCALE	N/A
DATE	12-1-17
DWG. BY	MJC
DESIGN BY	MJC
APPROVED	N/A



REVISIONS	

STATE	PROJECT NO.	SHEET NO.	TOTAL SHEETS
N.C.	10B.209011	8	
F.A. PROJECT NO.			



NOTES: STAGE ALL WORK SO THAT NC DOT BMP'S ARE ADHERED TO DURING REMOVAL OF EXISTING STRUCTURE AND INSTALLATION OF THE NEW STRUCTURE. USE EXTRA MEASURES TO ENSURE THAT ERODING SOILS ARE NOT AN ISSUE.

NOTES: REQUIRED THAT ALL WORK WITHIN THE STREAM BE COMPLETED "IN THE DRY".

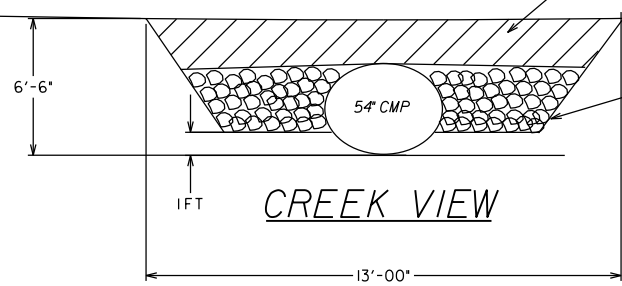
WATER SHALL BE PUMPED AROUND THE PROJECT SITE AND ALLOWED TO SHEET FLOW THROUGH VEGETATION OR BE FILTERED THROUGH AN APPROVED SILT BAG. GIVEN THE FACT THAT WATER WILL FLOW THROUGH THE PROJECT DURING EVENING HOURS, ANY EXPOSED DIRT SHOULD BE COVERED WITH FILTER FABRIC OR PLASTIC SHEETING PRIOR TO LEAVING THE PROJECT.

**Impervious Dike:**

The work covered by this section consists of furnishing, installing, maintaining, and removing an impervious dike for the purpose of diverting normal stream flow around the construction site. The Supervisor shall construct an impervious dike in such a manner approved by the Engineer. The impervious dike shall not permit seepage of water into the construction site or contribute to siltation of the stream. The impervious dike shall be constructed of an acceptable material in the locations noted on the plans or as directed by the Engineer.

Acceptable materials shall include but not be limited to sheet piles, sandbags, and/or the placement of an acceptable size stone lined with polypropylene or other impervious fabric.

Earth material shall not be used to construct an impervious dike when it is in direct contact with the stream unless vegetation can be established before contact with the stream takes place.



COIR FIBER MATTING

CLASS II RIPRAP



AUSTIN CHANEY RD. (SR 1758)  
0.2 MI SE JCT (SR 1751)  
IN UNION COUNTY

SCALE	1"=50'
DATE	12-01-17
DWG. BY	MJC
DESIGN BY	MJC
APPROVED	N/A



REVISIONS	



DIVISION OF HIGHWAYS  
STATE OF NORTH CAROLINA

PROJECT REFERENCE NO. 10B.209011	SHEET NO. 9
ROADWAY DESIGN ENGINEER	HYDRAULICS ENGINEER

# ***SOIL STABILIZATION TIMEFRAMES***

<i>SITE DESCRIPTION</i>	<i>STABILIZATION TIME</i>	<i>TIMEFRAME EXCEPTIONS</i>
PERIMETER DIKES, SWALES, DITCHES AND SLOPES	7 DAYS	NONE
HIGH QUALITY WATER (HQW) ZONES	7 DAYS	NONE
SLOPES STEEPER THAN 3:1	7 DAYS	IF SLOPES ARE 10' OR LESS IN LENGTH AND ARE NOT STEEPER THAN 2:1, 14 DAYS ARE ALLOWED.
SLOPES 3:1 OR FLATTER	14 DAYS	7 DAYS FOR SLOPES GREATER THAN 50' IN LENGTH.
ALL OTHER AREAS WITH SLOPES FLATTER THAN 4:1	14 DAYS	NONE, EXCEPT FOR PERIMETERS AND HQW ZONES.