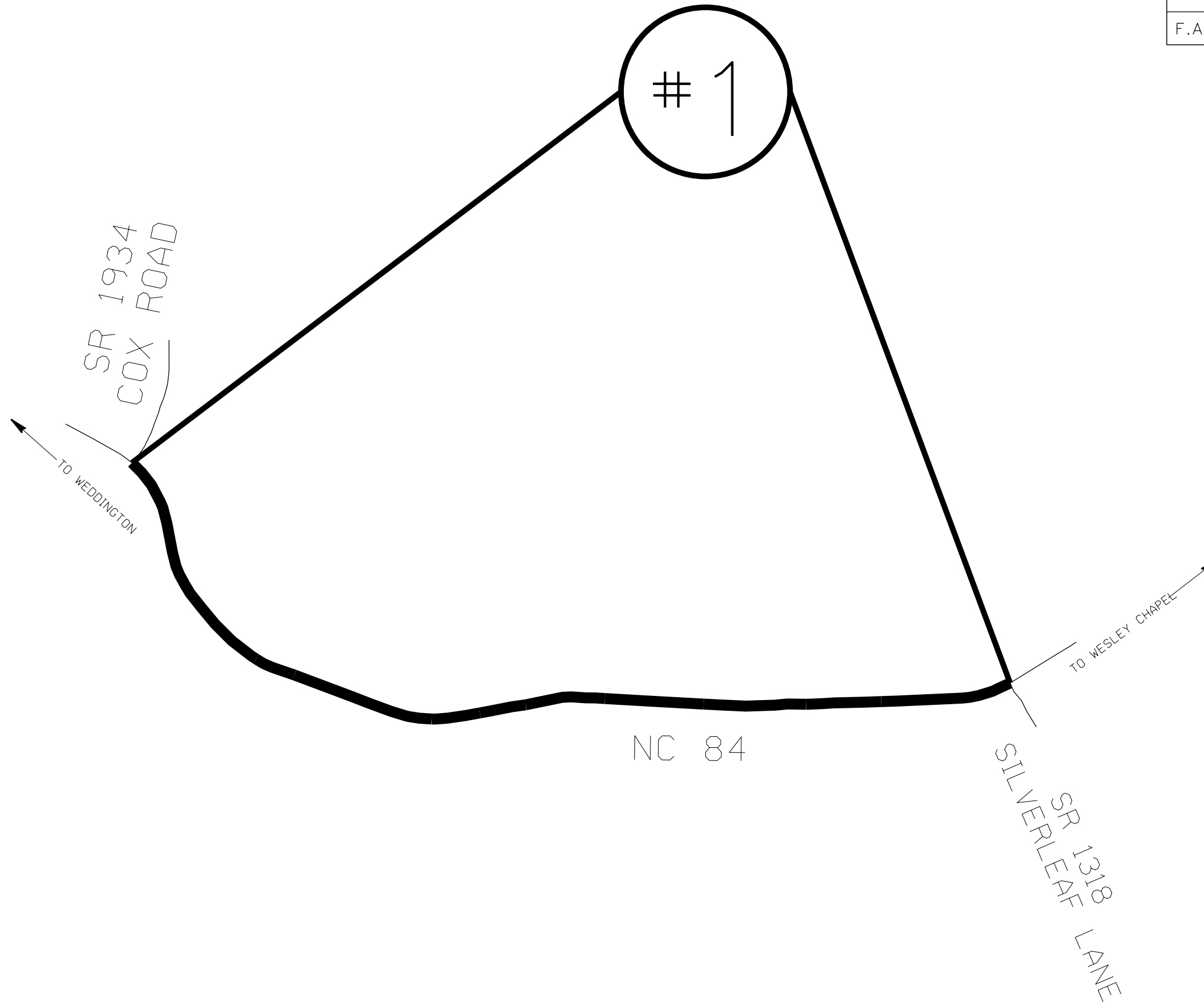


STATE	PROJECT NO.	SHEET NO.	TOTAL SHEETS
	2022CPT.10.12.10901 2022CPT.10.12.20901	1	
F.A. PROJECT NO.			



ENLARGED MUNICIPAL AND SUBURBAN AREAS
 UNION COUNTY
 NORTH CAROLINA
PREPARED BY THE
 NORTH CAROLINA DEPARTMENT OF TRANSPORTATION
 DIVISION OF HIGHWAYS - DIVISION 10 DISTRICT 3

MAP # 1 NC 84
 3.3 MILES
 FROM SR 1934 COX ROAD
 TO SR 1318 SILVERLEAF LANE



NC 84

SILVERLEAF
 SR 1318
 LANE

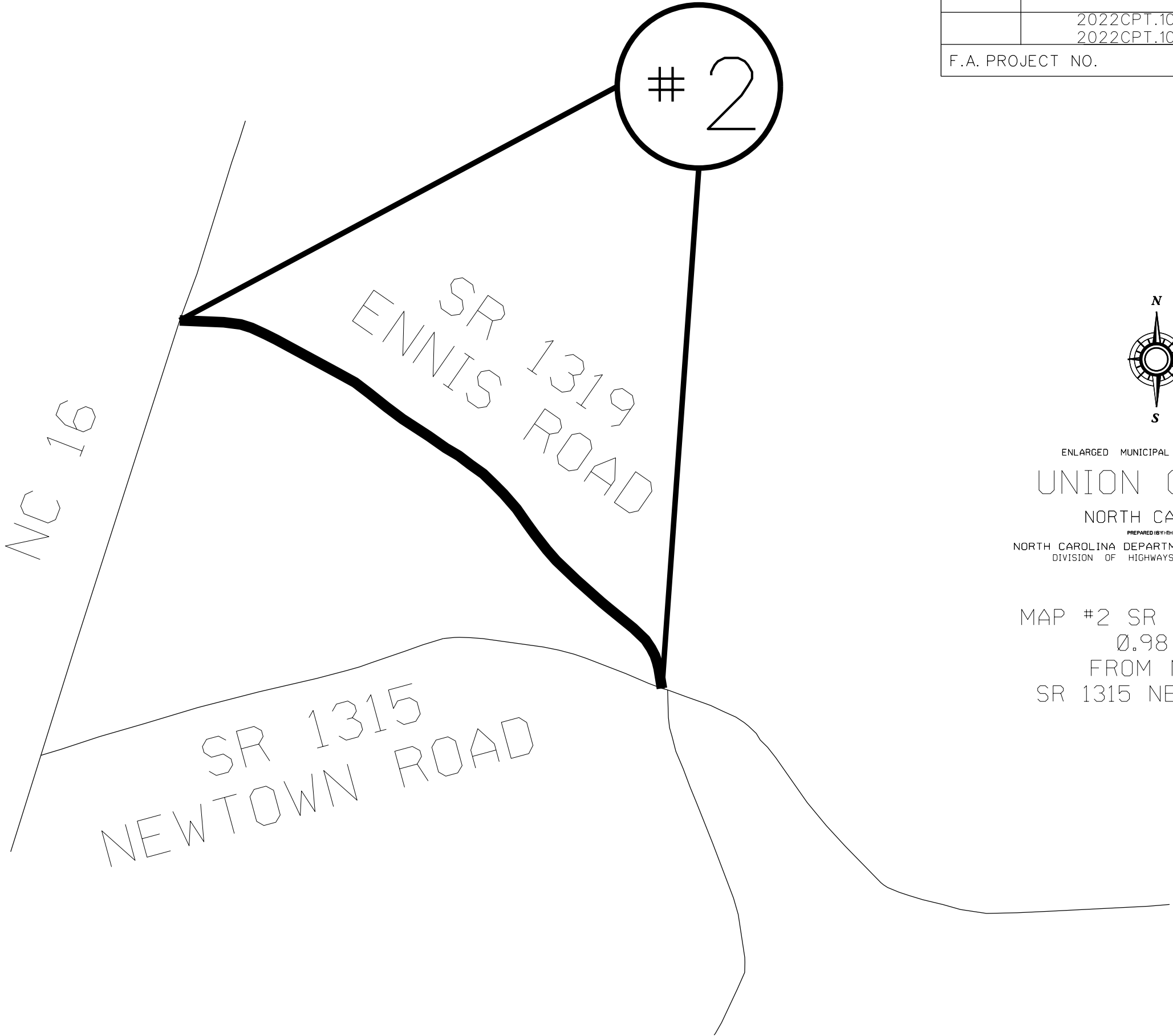
SR 1934
 COX ROAD

TO WEDDINGTON

TO WESLEY CHAPEL

1

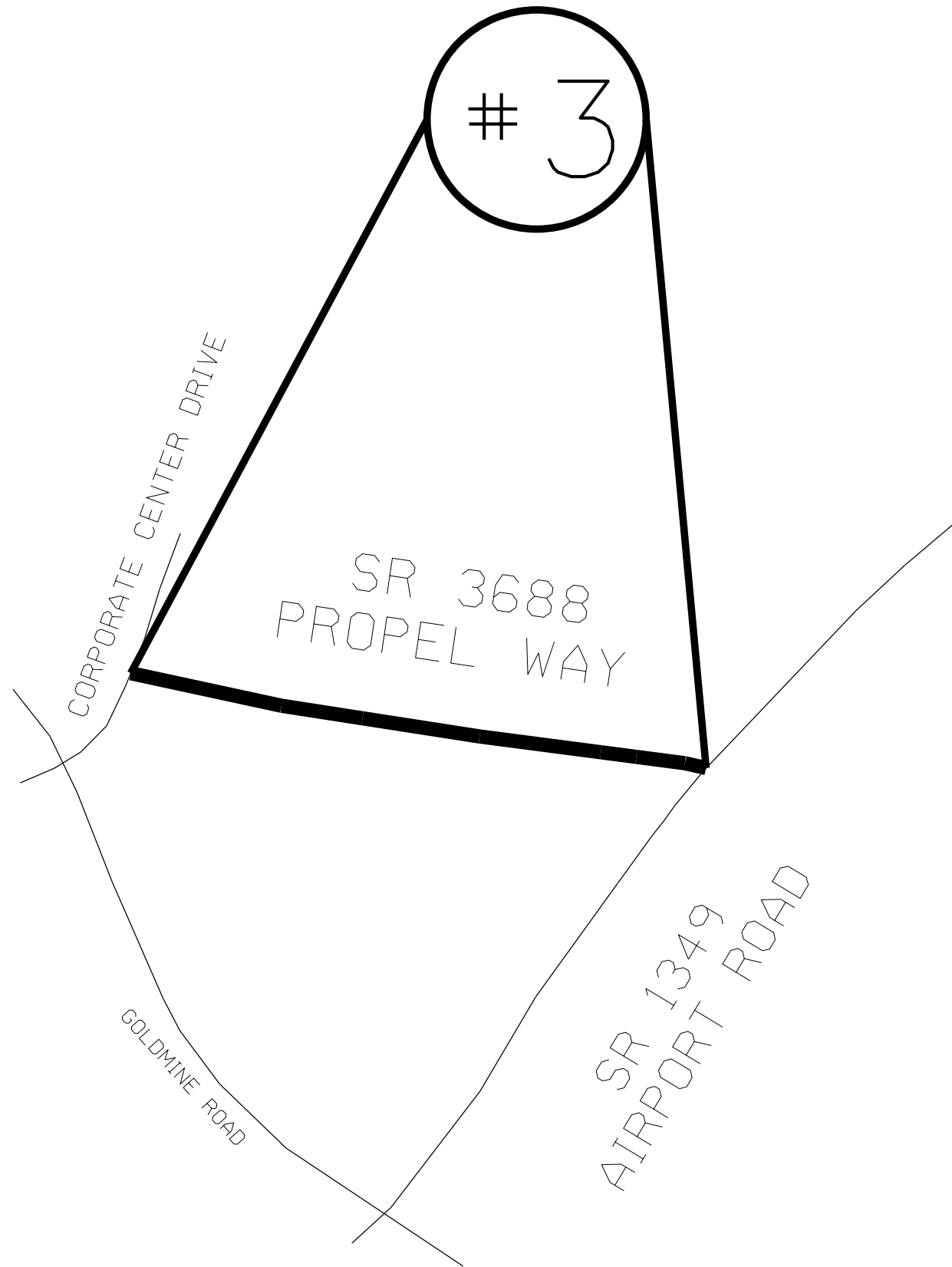
STATE	PROJECT NO.	SHEET NO.	TOTAL SHEETS
	2022CPT.10.12.10901 2022CPT.10.12.20901	2	
F.A. PROJECT NO.			



ENLARGED MUNICIPAL AND SUBURBAN AREAS
 UNION COUNTY
 NORTH CAROLINA
PREPARED BY THE
 NORTH CAROLINA DEPARTMENT OF TRANSPORTATION
 DIVISION OF HIGHWAYS - DIVISION 10 DISTRICT 3

MAP #2 SR 1319 ENNIS ROAD
 0.98 MILES
 FROM NC 16 TO
 SR 1315 NEWTOWN ROAD

STATE	PROJECT NO.	SHEET NO.	TOTAL SHEETS
	2022CPT.10.12.10901 2022CPT.10.12.20901	3	
F.A. PROJECT NO.			



ENLARGED MUNICIPAL AND SUBURBAN AREAS
 UNION COUNTY
 NORTH CAROLINA
PREPARED BY THE
 NORTH CAROLINA DEPARTMENT OF TRANSPORTATION
 DIVISION OF HIGHWAYS - DIVISION 10 DISTRICT 3

MAP #3 SR 3688 PROPEL WAY
 0.34 MILES
 FROM SR 1349 AIRPORT ROAD
 TO CORPORATE CENTER DRIVE

STATE	PROJECT NO.	SHEET NO.	TOTAL SHEETS
N.C.	2022CPT.10.12.10901 2022CPT.10.12.20901	4	
F.A. PROJECT NO.			

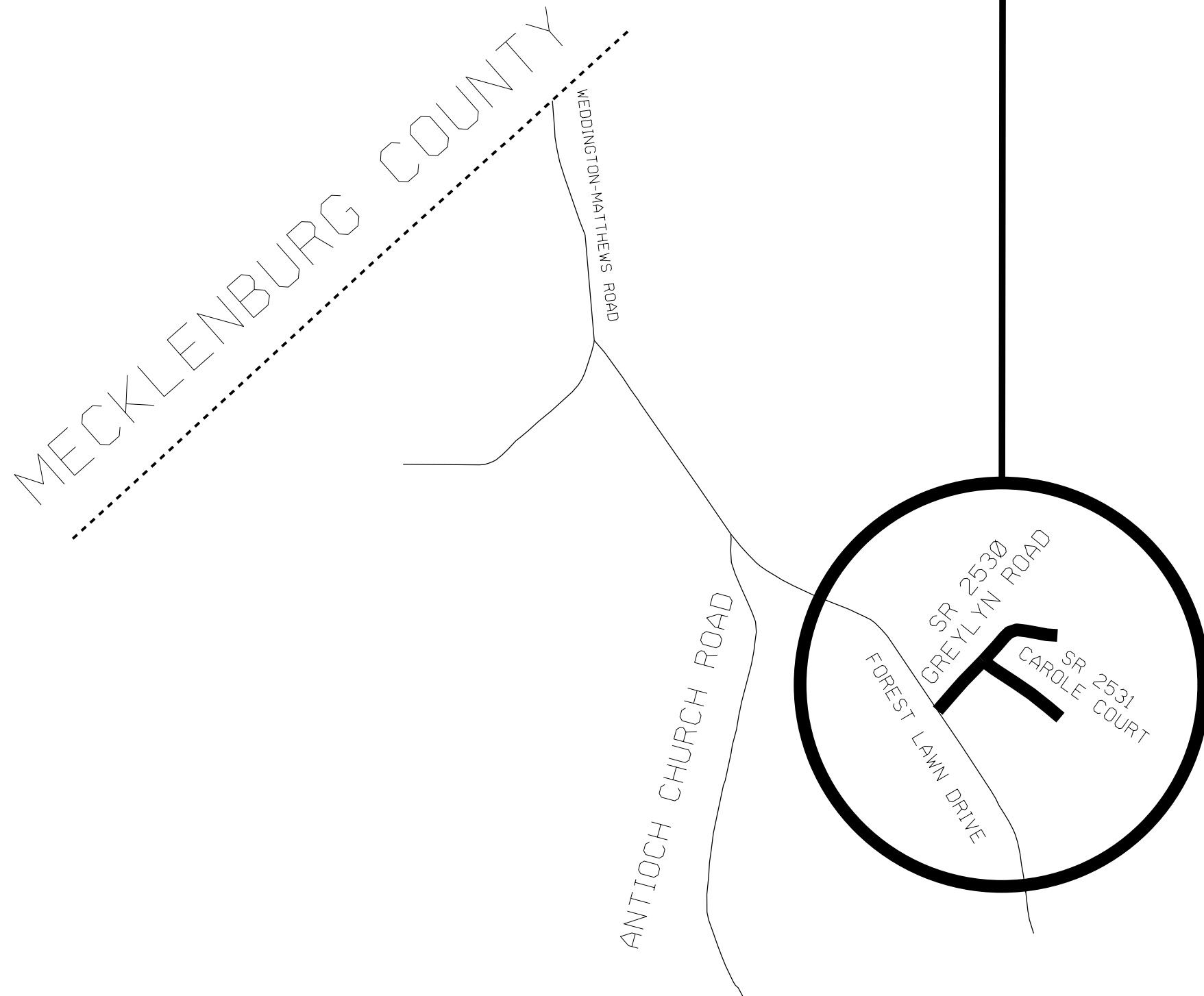


ENLARGED MUNICIPAL AND SUBURBAN AREAS
UNION COUNTY
 NORTH CAROLINA
PREPARED BY THE
 NORTH CAROLINA DEPARTMENT OF TRANSPORTATION
 DIVISION OF HIGHWAYS - DIVISION 10 DISTRICT 3

MAP #4 SR 2530 GREYLEN DRIVE
 0.28 MILES
 FROMS SR 1358 FOREST LAWN DRIVE
 TO END OF MAINTNANCE

MAP #5 SR 2531 CAROLE COURT
 0.18 MILES
 FROM SR 2530 GREYLYN DRIVE
 TO END OF MAINTNANCE

4 AND #5



6 - # 9

STATE	PROJECT NO.	SHEET NO.	TOTAL SHEETS
NC	2022CPT.10.12.10901 2022CPT.10.12.20901	5	
F.A. PROJECT NO.			

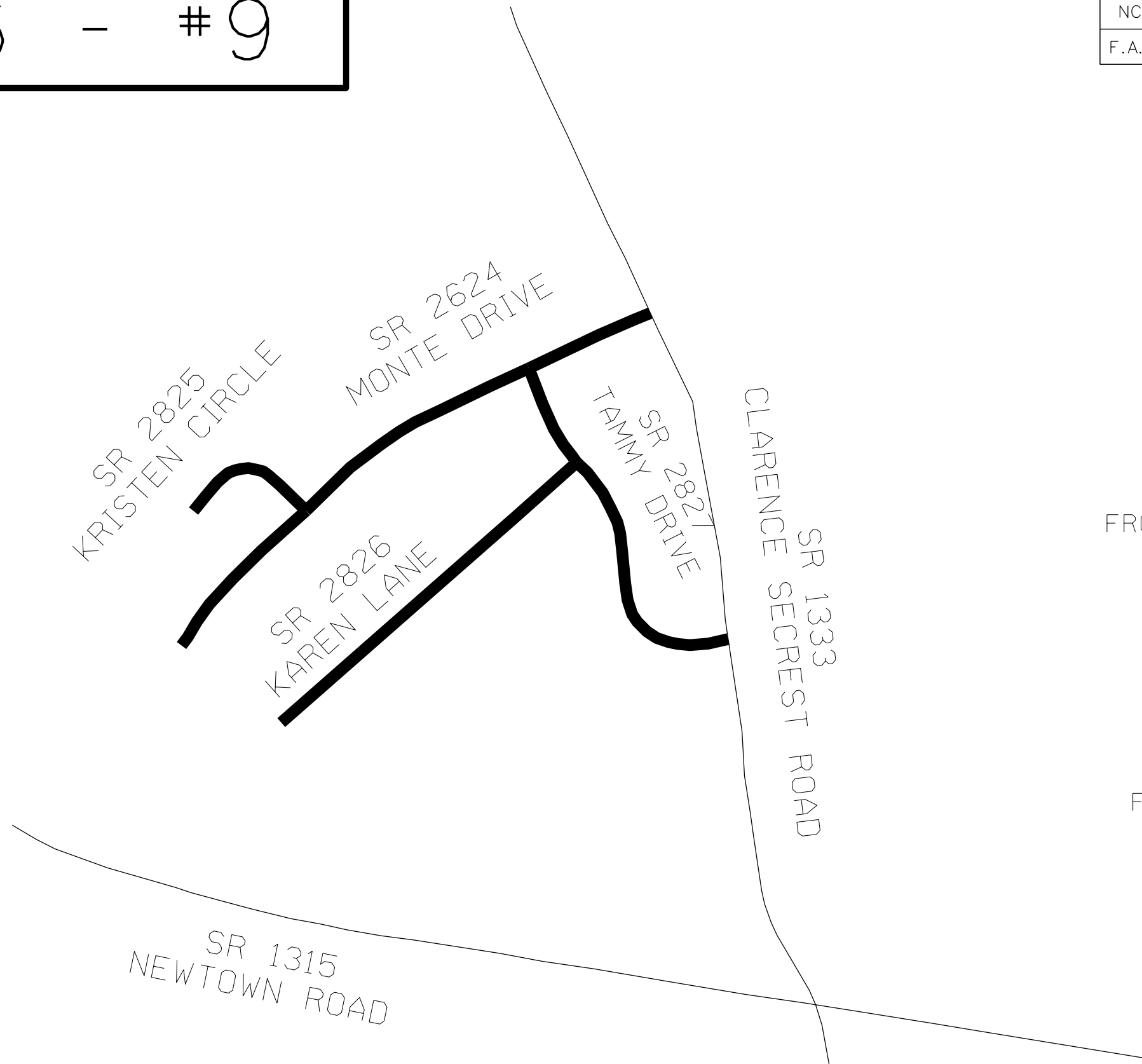


ENLARGED MUNICIPAL AND SUBURBAN AREAS

UNION COUNTY

NORTH CAROLINA

PREPARED BY THE
NORTH CAROLINA DEPARTMENT OF TRANSPORTATION
DIVISION OF HIGHWAYS - DIVISION 10 DISTRICT 3



MAP #6 SR 2624 MONTE DRIVE
0.56 MILES
FROM SR 1333 CLARENCE SECREST ROAD
TO END OF MAINTANANCE

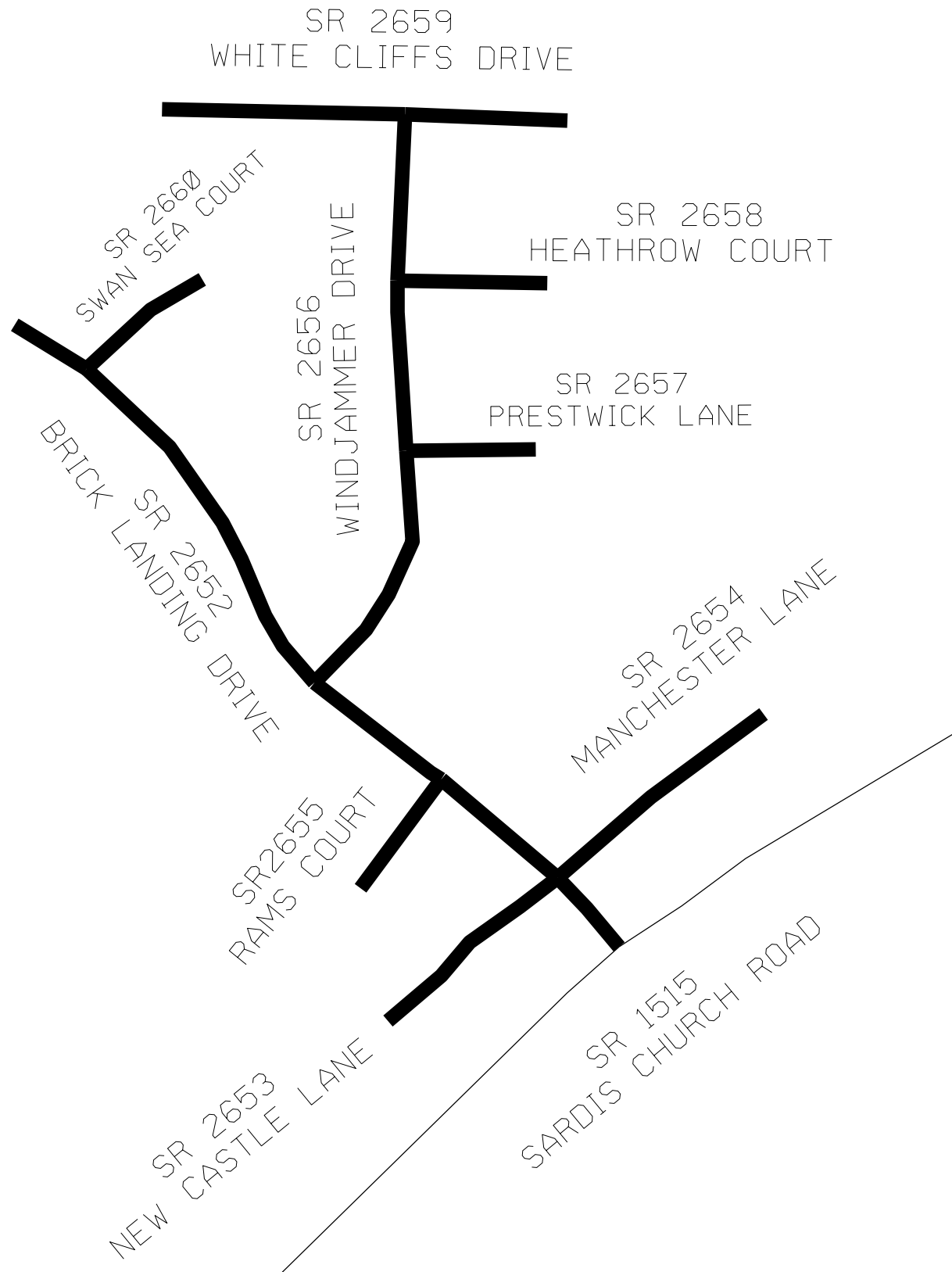
MAP #7 SR 2825 KRISTEN CIRCLE
0.14 MILES
FROM SR 2624 MONTE DRIVE
TO END OF MAINTANANCE

MAP #8 SR 2827 TAMMY DRIVE
0.36 MILES
FROM SR 1333 CLARENCE SECREST ROAD
TO SR 2624 MONTE DRIVE

MAP #9 SR 2826 KAREN LANE
0.52 MILES
FROM SR 2827 TAMMY DRIVE
TO END OF MAINTANANCE

#10 - #18

STATE	PROJECT NO.	SHEET NO.	TOTAL SHEETS
	2022CPT.10.12.10901 2022CPT.10.12.20901	6	
F.A. PROJECT NO.			



ENLARGED MUNICIPAL AND SUBURBAN AREAS
UNION COUNTY
 NORTH CAROLINA
PREPARED BY THE
 NORTH CAROLINA DEPARTMENT OF TRANSPORTATION
 DIVISION OF HIGHWAYS - DIVISION 10 DISTRICT 3

MAP #10 SR 2652 BRICK LANDING DRIVE
 0.24 MILES
 FROM SR 1515 SARDIS CURCH ROAD
 TO END OF MAINTANANCE

MAP #11 SR 2653 NEW CASTLE LANE
 0.06 MILES
 FROM SR 2652 BRICK LANDING DRIVE
 TO END OF MAINTANANCE

MAP #12 SR 2654 MANCHESTER LANE
 0.07 MILES
 FROM SR 2652 BRICK LANDING DRIVE
 TO END OF MAINTANANCE

MAP #13 SR 2655 RAMS COURT
 0.03 MILES
 FROM SR 2652 BRICK LANDING DRIVE
 TO END OF MAINTANANCE

MAP #14 SR 2656 WINDJAMMER DRIVE
 0.16 MILES
 FROM SR 2652 BRICK LANDING DRIVE
 TO SR 2659 WHITE CLIFFS DRIVE

MAP #15 SR 2657 PRESTWICK LANE
 0.03 MILES
 FROM SR 2656 WINDJAMMER DRIVE
 TO END OF MAINTANANCE

MAP #16 SR 2658 HEATHROW COURT
 0.04 MILES
 FROM SR 2656 WINDJAMMER DRIVE
 TO END OF MAINTANANCE

MAP #17 SR 2659 WHITE CLIFFS DRIVE
 0.11 MILES
 FROM END OF MAINTANANCE
 TO END OF MAINTANANCE

MAP #18 SR 2660 SWAN SEA COURT
 0.04 MILES
 FROM SR 2652 BRICK LANDING DRIVE
 TO END OF MAINTANANCE

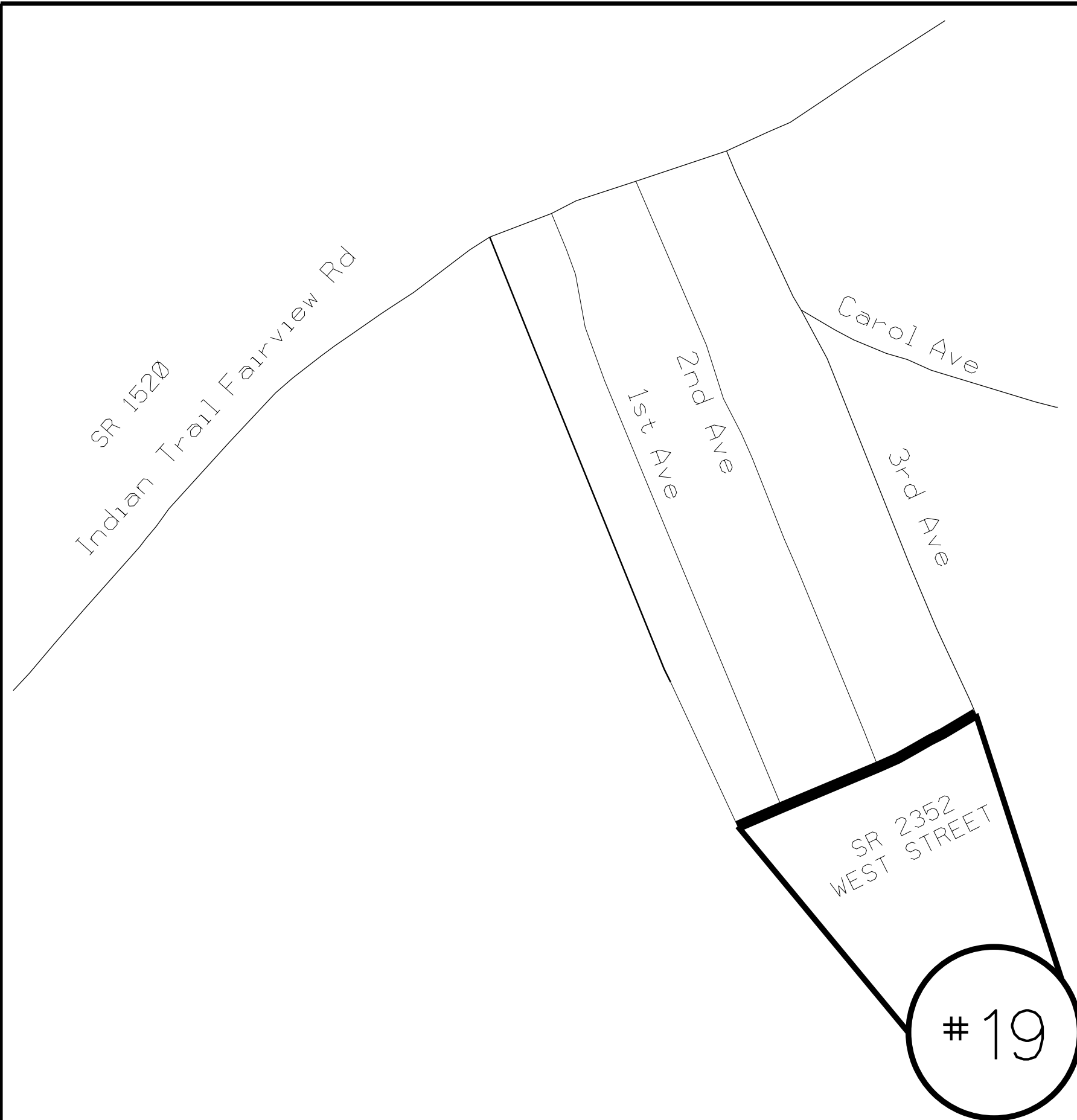
STATE	PROJECT NO.	SHEET NO.	TOTAL SHEETS
	2022CPT.10.12.10901 2022CPT.10.12.20901	7	
F.A. PROJECT NO.			



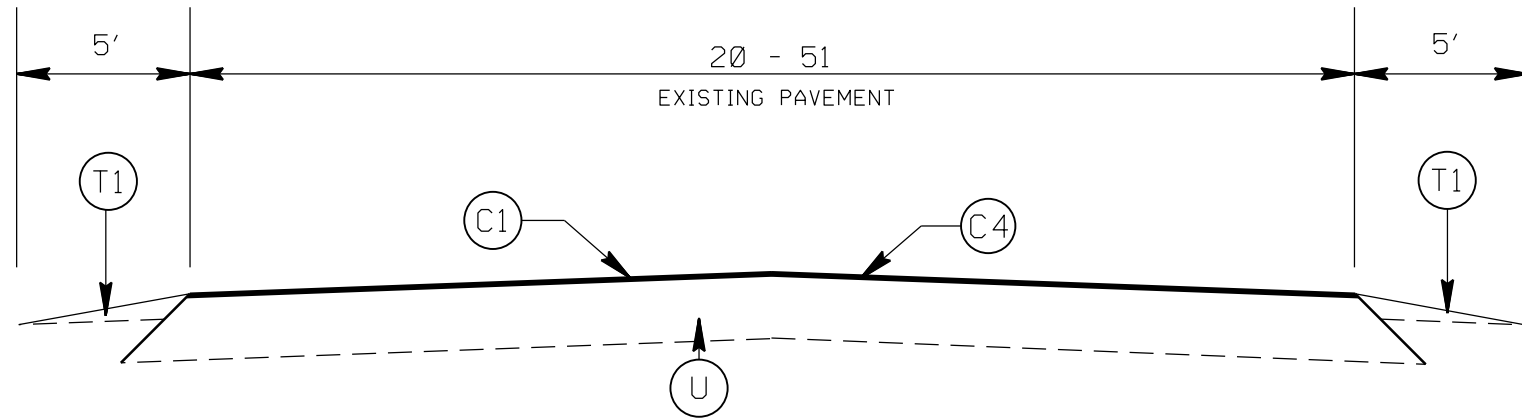
ENLARGED MUNICIPAL AND SUBURBAN AREAS
 UNION COUNTY
 NORTH CAROLINA

PREPARED BY THE
 NORTH CAROLINA DEPARTMENT OF TRANSPORTATION
 DIVISION OF HIGHWAYS - DIVISION 10 DISTRICT 3

MAP #19 SR 2352 WEST STREET
 0.14 MILES
 FROM 3RD AVENUE TO 1ST AVENUE



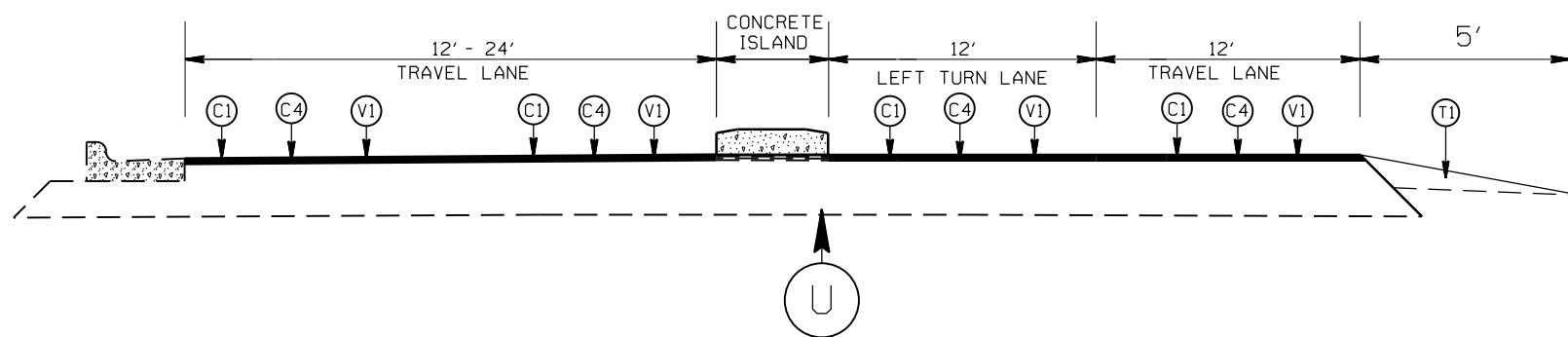
STATE	PROJECT NO.	SHEET NO.	TOTAL SHEETS
N.C.	2022CPT.10.12.10901 2022CPT.10.12.20901	8	
F.A. PROJECT NO.			



TYPICAL SECTION 1
 NC 84 (MAP 1)
 APPROX. STA: 10+00 TO 151+35
 APPROX. STA: 181+70 TO END OF MAP
 SR 3688 PROPEL WAY (MAP 3)

PAVEMENT SCHEDULE

(C1)	PROP. APPROX. 2.0" ASPHALT CONC. SURFACE COURSE, TYPE S9.5C, AT AN AVERAGE RATE OF 224 LBS. PER SQ. YD.
(C2)	PROP. APPROX. 1.5" ASPHALT CONC. SURFACE COURSE, TYPE S9.5B, AT AN AVERAGE RATE OF 165 LBS. PER SQ. YD.
(C3)	PROP. APPROX. 1.0" ASPHALT CONC. SURFACE COURSE, TYPE S9.5B, AT AN AVERAGE RATE OF 110 LBS. PER SQ. YD.
(C4)	PROP. ASPHALT SURFACE TREATMENT, #67 MAT COAT
(C5)	PROP. ASPHALT SURFACE TREATMENT, #78M MAT COAT
(E1)	PROPOSED 5.0" ASPHALT CONC. BASE CORSE, TYPE B25.0C, AT AN AVERAGE RATE OF 570 LBS. PER SQ. YD.
(T1)	SHOULDER RECONSTRUCTION
(U)	EXISTING PAVEMENT
(V1)	MILLING OF EXISTING PAVEMENT, 2.5" DEPTH.
(V2)	MILLING OF EXISTING PAVEMENT, 1.5" DEPTH.
(V3)	MILLING 1" OF EXISTING ASPHALT PAVEMENT, 5" DEPTH. (SEE S.P. TRENCHING FOR BASE COURSE BY MILLING.)

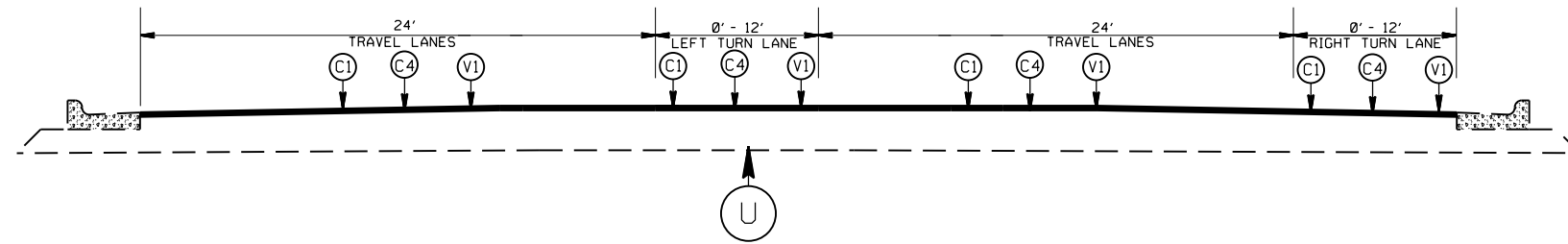


TYPICAL SECTION NO. 2
 NC 84 (MAP 1)
 APPROX. STA: 151+35 TO 155+35

2022-2023 UNION COUNTY RESURFACING		
SCALE	-1A-	REVISIONS
DATE	10/21	
DWG. BY	AMO	
DESIGN BY	AMO	
APPROVED		



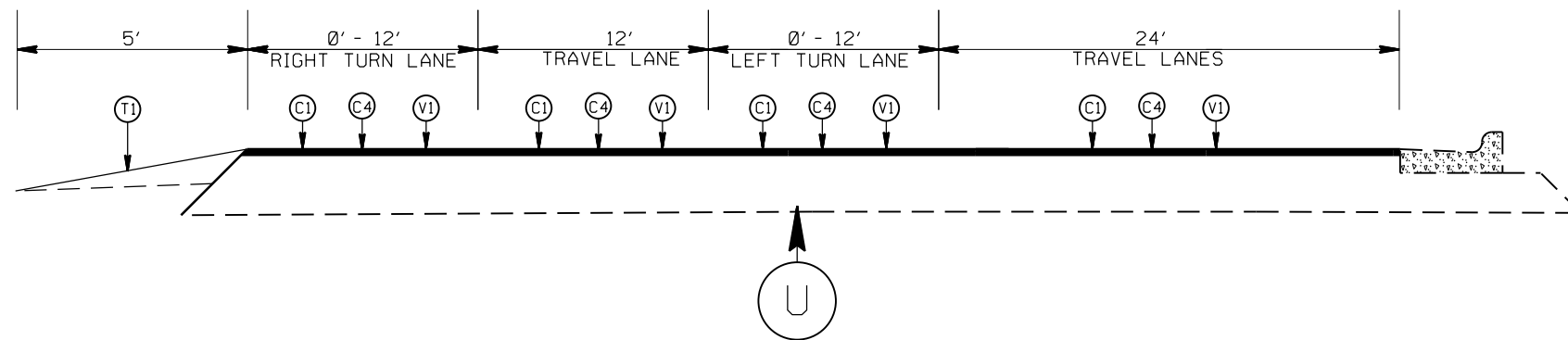
STATE	PROJECT NO.	SHEET NO.	TOTAL SHEETS
N.C.	2022CPT.10.12.10901 2022CPT.10.12.20901	9	
F.A. PROJECT NO.			



TYPICAL SECTION NO. 3
 NC 84 (MAP 1)
 APPROX. STA: 155+35 TO 161+92

PAVEMENT SCHEDULE

(C1)	PROP. APPROX. 2.0" ASPHALT CONC. SURFACE COURSE, TYPE S9.5C, AT AN AVERAGE RATE OF 224 LBS. PER SQ. YD.
(C2)	PROP. APPROX. 1.5" ASPHALT CONC. SURFACE COURSE, TYPE S9.5B, AT AN AVERAGE RATE OF 165 LBS. PER SQ. YD.
(C3)	PROP. APPROX. 1.0" ASPHALT CONC. SURFACE COURSE, TYPE S9.5B, AT AN AVERAGE RATE OF 110 LBS. PER SQ. YD.
(C4)	PROP. ASPHALT SURFACE TREATMENT, #67 MAT COAT
(C5)	PROP. ASPHALT SURFACE TREATMENT, #78M MAT COAT
(E1)	PROPOSED 5.0" ASPHALT CONC. BASE CORSE, TYPE B25.0C, AT AN AVERAGE RATE OF 570 LBS. PER SQ. YD.
(T1)	SHOULDER RECONSTRUCTION
(U)	EXISTING PAVEMENT
(V1)	MILLING OF EXISTING PAVEMENT, 2.5" DEPTH.
(V2)	MILLING OF EXISTING PAVEMENT, 1.5" DEPTH.
(V3)	MILLING 1' OF EXISTING ASPHALT PAVEMENT, 5" DEPTH. (SEE S.P. TRENCHING FOR BASE COURSE BY MILLING.)

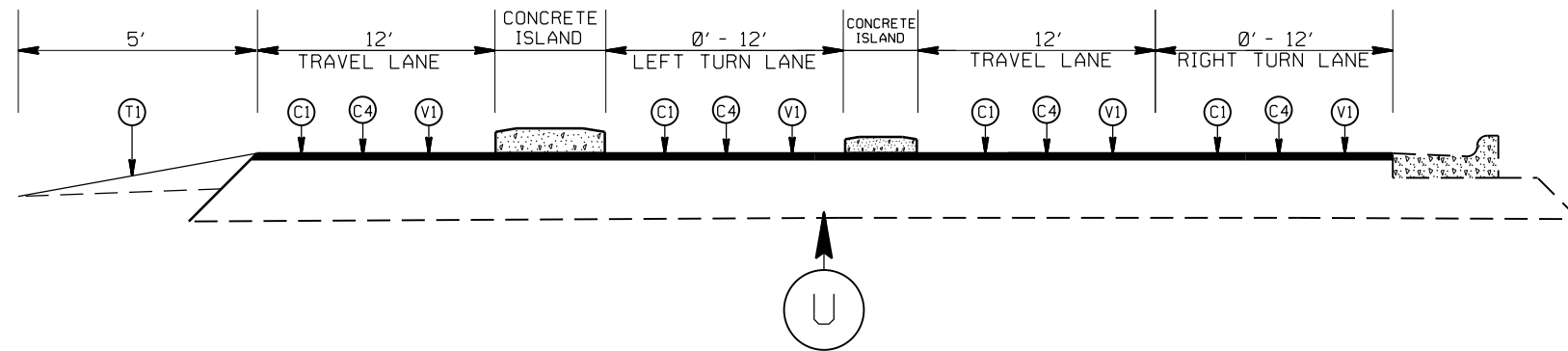


TYPICAL SECTION NO. 4
 NC 84 (MAP 1)
 APPROX. STA: 161+92 TO 167+15

2022-2023
 UNION COUNTY RESURFACING

SCALE	-NA-		REVISIONS
DATE	10/21		
DWG. BY	AMO		
DESIGN BY	AMO		
APPROVED			

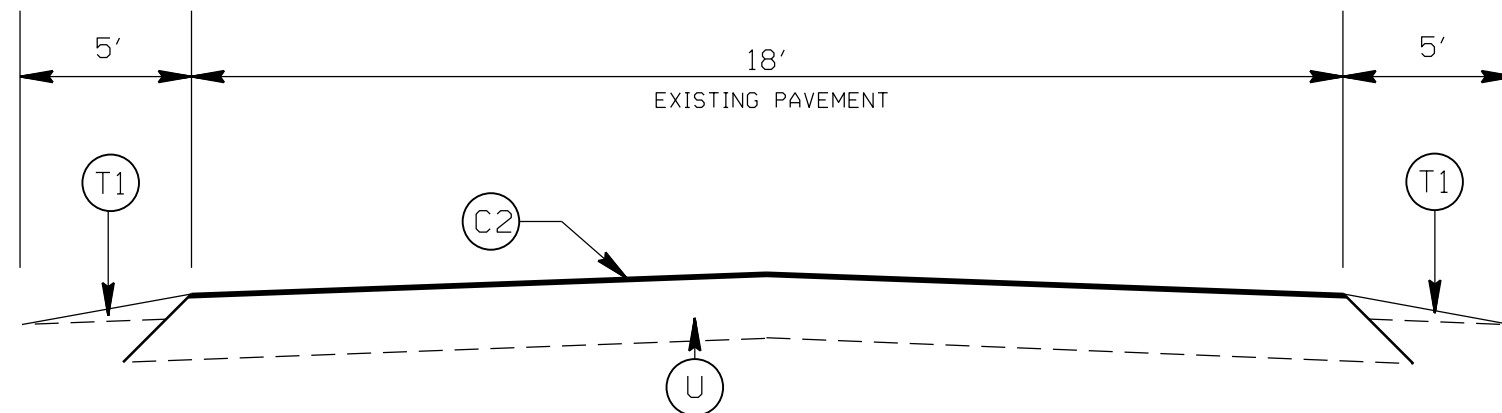
STATE	PROJECT NO.	SHEET NO.	TOTAL SHEETS
N.C.	2022CPT.10.12.10901 2022CPT.10.12.20901	10	
F.A. PROJECT NO.			




TYPICAL SECTION NO. 5
 NC 84 (MAP 1)
 APPROX. STA: 167+15 TO 181+70

PAVEMENT SCHEDULE

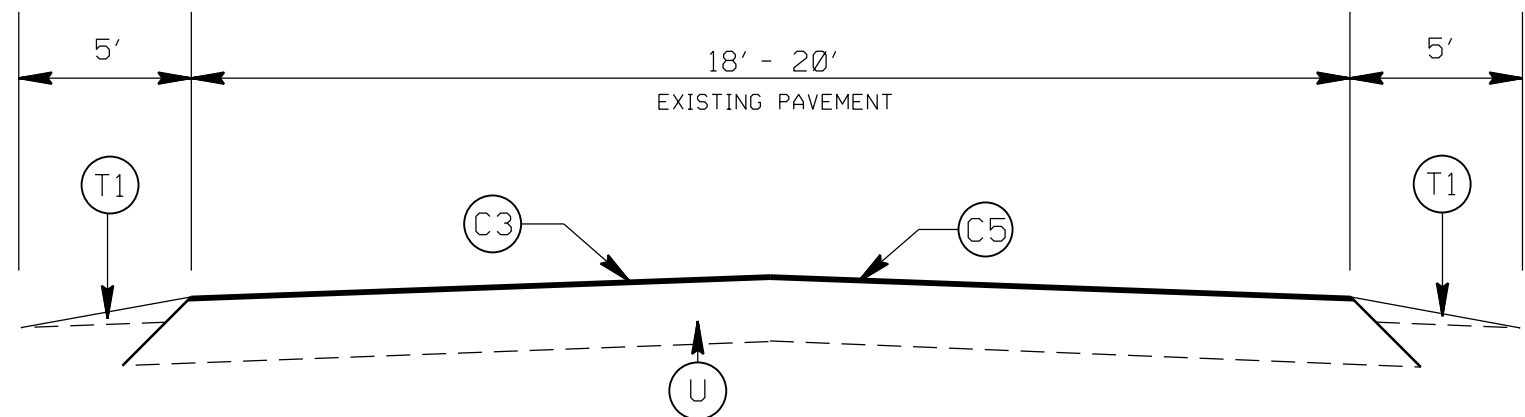
(C1)	PROP. APPROX. 2.0" ASPHALT CONC. SURFACE COURSE, TYPE S9.5C, AT AN AVERAGE RATE OF 224 LBS. PER SQ. YD.
(C2)	PROP. APPROX. 1.5" ASPHALT CONC. SURFACE COURSE, TYPE S9.5B, AT AN AVERAGE RATE OF 165 LBS. PER SQ. YD.
(C3)	PROP. APPROX. 1.0" ASPHALT CONC. SURFACE COURSE, TYPE S9.5B, AT AN AVERAGE RATE OF 110 LBS. PER SQ. YD.
(C4)	PROP. ASPHALT SURFACE TREATMENT, #67 MAT COAT
(C5)	PROP. ASPHALT SURFACE TREATMENT, #78M MAT COAT
(E1)	PROPOSED 5.0" ASPHALT CONC. BASE CORSE, TYPE B25.0C, AT AN AVERAGE RATE OF 570 LBS. PER SQ. YD.
(T1)	SHOULDER RECONSTRUCTION
(U)	EXISTING PAVEMENT
(V1)	MILLING OF EXISTING PAVEMENT, 2.5" DEPTH.
(V2)	MILLING OF EXISTING PAVEMENT, 1.5" DEPTH.
(V3)	MILLING 1' OF EXISTING ASPHALT PAVEMENT, 5" DEPTH. (SEE S.P. TRENCHING FOR BASE COURSE BY MILLING.)



TYPICAL SECTION 6
 SR 2352 WEST STREET (MAP 19)

2022-2023 UNION COUNTY RESURFACING			REVISIONS	
SCALE	-NA-			
DATE	10/21			
DWG. BY	AMO			
DESIGN BY	AMO			
APPROVED				

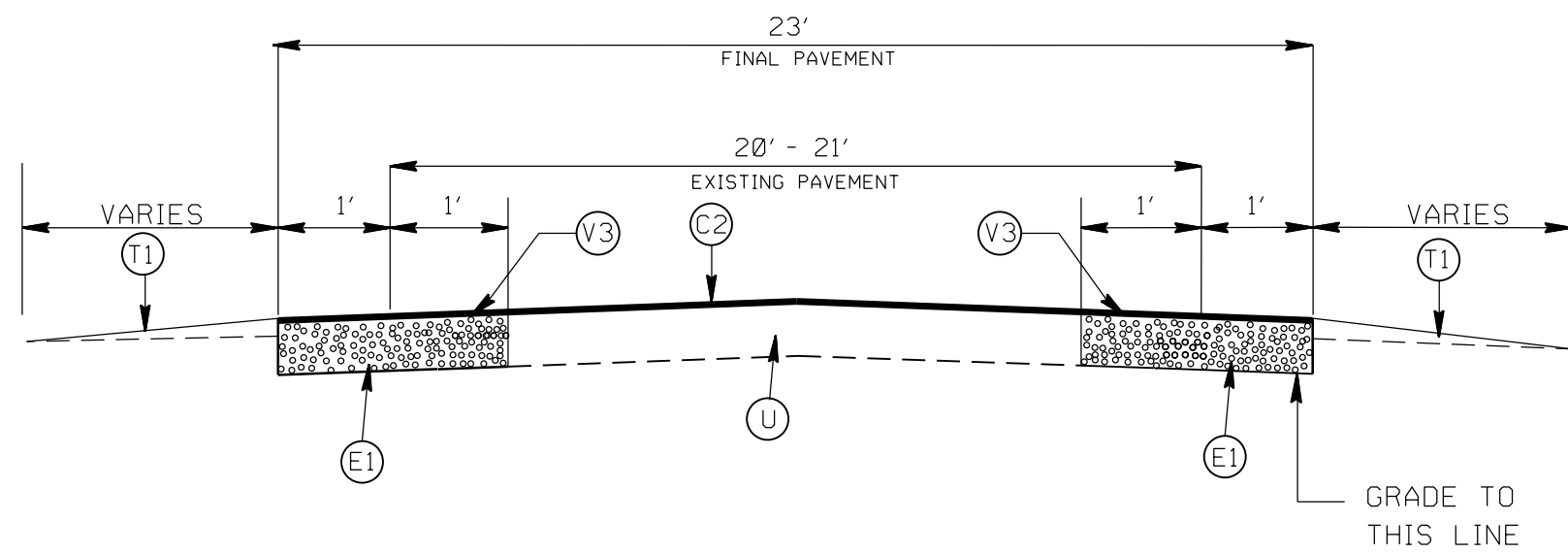
STATE	PROJECT NO.	SHEET NO.	TOTAL SHEETS
N.C.	2022CPT.10.12.10901 2022CPT.10.12.20901	11	
F.A. PROJECT NO.			



TYPICAL SECTION 7
 SR 2530 GREYLYN DRIVE (MAP 4)
 SR 2531 CAROLE COURT (MAP 5)
 SR 2624 MONTE DRIVE (MAP 6)
 SR 2825 KRISTEN CIRCLE (MAP 7)
 SR 2827 TAMMY DRIVE (MAP 8)
 SR 2826 KAREN LANE (MAP 9)

PAVEMENT SCHEDULE

(C1)	PROP. APPROX. 2.0" ASPHALT CONC. SURFACE COURSE, TYPE S9.5C, AT AN AVERAGE RATE OF 224 LBS. PER SQ. YD.
(C2)	PROP. APPROX. 1.5" ASPHALT CONC. SURFACE COURSE, TYPE S9.5B, AT AN AVERAGE RATE OF 165 LBS. PER SQ. YD.
(C3)	PROP. APPROX. 1.0" ASPHALT CONC. SURFACE COURSE, TYPE S9.5B, AT AN AVERAGE RATE OF 110 LBS. PER SQ. YD.
(C4)	PROP. ASPHALT SURFACE TREATMENT, #67 MAT COAT
(C5)	PROP. ASPHALT SURFACE TREATMENT, #78M MAT COAT
(E1)	PROPOSED 5.0" ASPHALT CONC. BASE CORSE, TYPE B25.0C, AT AN AVERAGE RATE OF 570 LBS. PER SQ. YD.
(T1)	SHOULDER RECONSTRUCTION
(U)	EXISTING PAVEMENT
(V1)	MILLING OF EXISTING PAVEMENT, 2.5" DEPTH.
(V2)	MILLING OF EXISTING PAVEMENT, 1.5" DEPTH.
(V3)	MILLING 1' OF EXISTING ASPHALT PAVEMENT, 5" DEPTH. (SEE S.P. TRENCHING FOR BASE COURSE BY MILLING.)

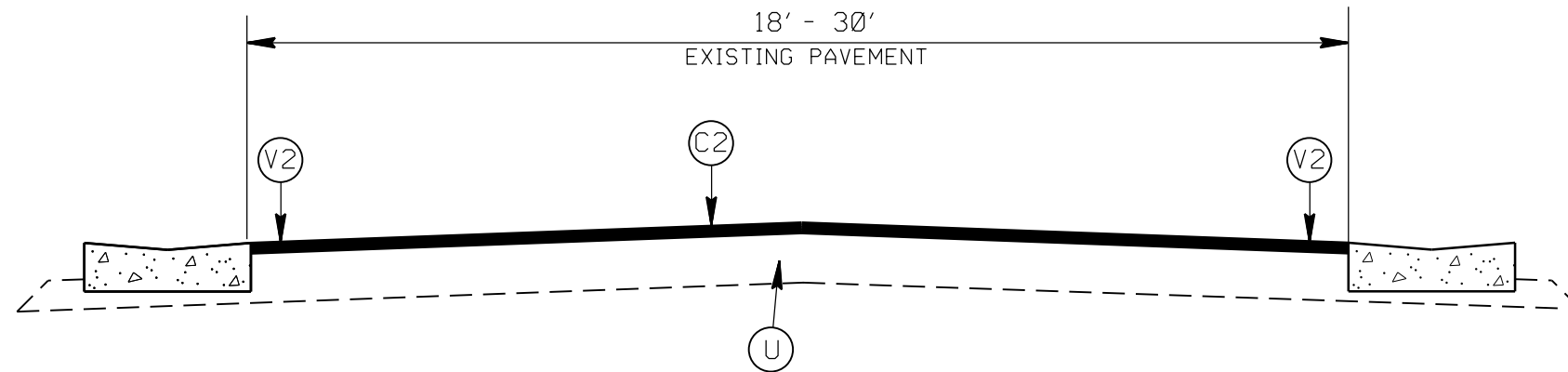


TYPICAL SECTION 8
 SR 1319 ENNIS ROAD (MAP 2)

2022-2023
UNION COUNTY RESURFACING

SCALE	-NA-		REVISIONS
DATE	10/21		
DWG. BY	AMO		
DESIGN BY	AMO		
APPROVED			

STATE	PROJECT NO.	SHEET NO.	TOTAL SHEETS
N.C.	2022CPT.10.12.10901 2022CPT.10.12.20901	12	
F.A. PROJECT NO.			



TYPICAL SECTION 9

- SR 2652 BRICK LANDING DRIVE (MAP 10)
- SR 2653 NEW CASTLE LANE (MAP 11)
- SR 2654 MANCHESTER LANE (MAP 12)
- SR 2655 RAMS COURT (MAP 13)
- SR 2656 WINDJAMMER DRIVE (MAP 14)
- SR 2657 PRESTWICK LANE (MAP 15)
- SR 2658 HEATHROW COURT (MAP 16)
- SR 2659 WHITE CLIFFS DRIVE (MAP 17)
- SR 2660 SWAM SEA COURT (MAP 18)

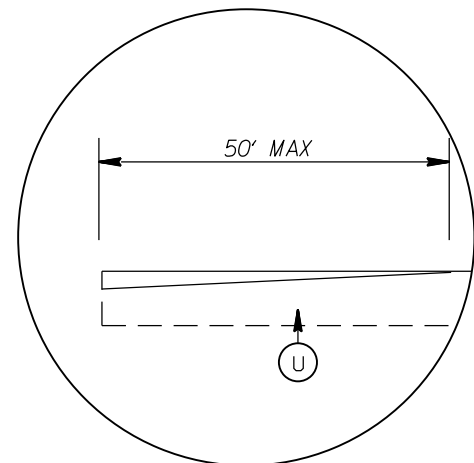
PAVEMENT SCHEDULE

(C1)	PROP. APPROX. 2.0" ASPHALT CONC. SURFACE COURSE, TYPE S9.5C, AT AN AVERAGE RATE OF 224 LBS. PER SQ. YD.
(C2)	PROP. APPROX. 1.5" ASPHALT CONC. SURFACE COURSE, TYPE S9.5B, AT AN AVERAGE RATE OF 165 LBS. PER SQ. YD.
(C3)	PROP. APPROX. 1.0" ASPHALT CONC. SURFACE COURSE, TYPE S9.5B, AT AN AVERAGE RATE OF 110 LBS. PER SQ. YD.
(C4)	PROP. ASPHALT SURFACE TREATMENT, #67 MAT COAT
(C5)	PROP. ASPHALT SURFACE TREATMENT, #78M MAT COAT
(E1)	PROPOSED 5.0" ASPHALT CONC. BASE CORSE, TYPE B25.0C, AT AN AVERAGE RATE OF 570 LBS. PER SQ. YD.
(T1)	SHOULDER RECONSTRUCTION
(U)	EXISTING PAVEMENT
(V1)	MILLING OF EXISTING PAVEMENT, 2.5" DEPTH.
(V2)	MILLING OF EXISTING PAVEMENT, 1.5" DEPTH.
(V3)	MILLING 1' OF EXISTING ASPHALT PAVEMENT, 5" DEPTH. (SEE S.P. TRENCHING FOR BASE COURSE BY MILLING.)

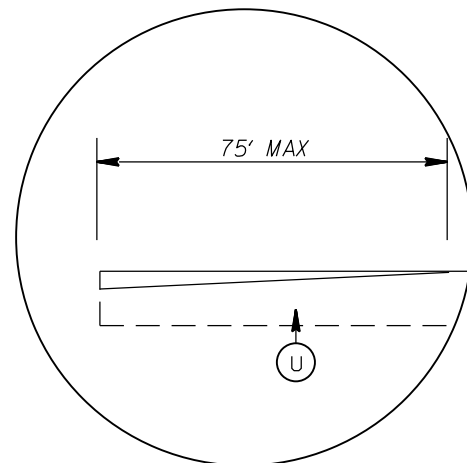
2022-2023
UNION COUNTY RESURFACING

SCALE	-NA-		REVISIONS	
DATE	10/21			
DWG. BY	AMO			
DESIGN BY	AMO			
APPROVED				

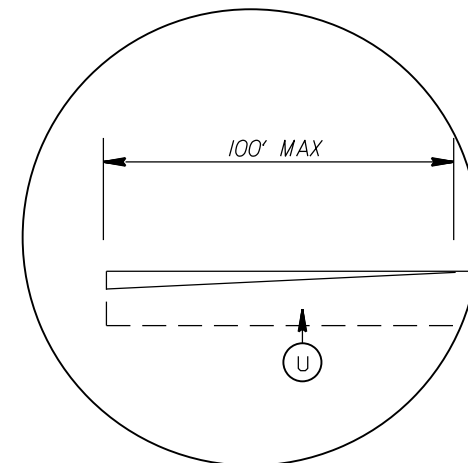
STATE	PROJECT NO.	SHEET NO.	TOTAL SHEETS
N.C.	2022CPT.10.12.10901 2022CPT.10.12.20901	13	
F.A. PROJECT NO.			



DETAIL FOR INCIDENTAL MILLING (0" TO 1.0")
TIE IN



DETAIL FOR INCIDENTAL MILLING (0" TO 1.5")
TIE IN

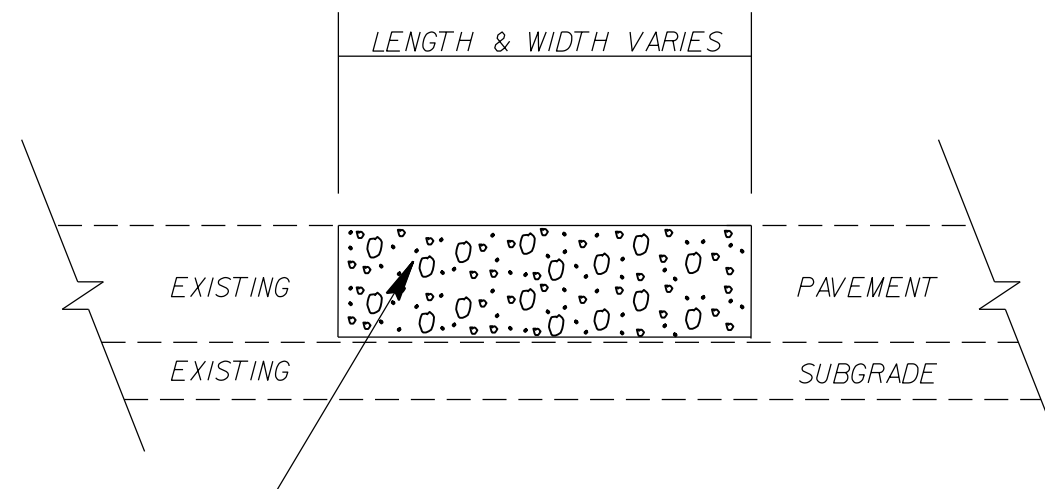


DETAIL FOR INCIDENTAL MILLING (0" TO 2.0")
TIE IN

PAVEMENT SCHEDULE

(C1)	PROP. APPROX. 2.0" ASPHALT CONC. SURFACE COURSE, TYPE S9.5C, AT AN AVERAGE RATE OF 224 LBS. PER SQ. YD.
(C2)	PROP. APPROX. 1.5" ASPHALT CONC. SURFACE COURSE, TYPE S9.5B, AT AN AVERAGE RATE OF 165 LBS. PER SQ. YD.
(C3)	PROP. APPROX. 1.0" ASPHALT CONC. SURFACE COURSE, TYPE S9.5B, AT AN AVERAGE RATE OF 110 LBS. PER SQ. YD.
(C4)	PROP. ASPHALT SURFACE TREATMENT, *67 MAT COAT
(C5)	PROP. ASPHALT SURFACE TREATMENT, *78M MAT COAT
(E1)	PROPOSED 5.0" ASPHALT CONC. BASE CORSE, TYPE B25.0C, AT AN AVERAGE RATE OF 570 LBS. PER SQ. YD.
(T1)	SHOULDER RECONSTRUCTION
(U)	EXISTING PAVEMENT
(V1)	MILLING OF EXISTING PAVEMENT, 2.5" DEPTH.
(V2)	MILLING OF EXISTING PAVEMENT, 1.5" DEPTH.
(V3)	MILLING 1' OF EXISTING ASPHALT PAVEMENT, 5" DEPTH. (SEE S.P. TRENCHING FOR BASE COURSE BY MILLING.*)

PATCHING DETAIL



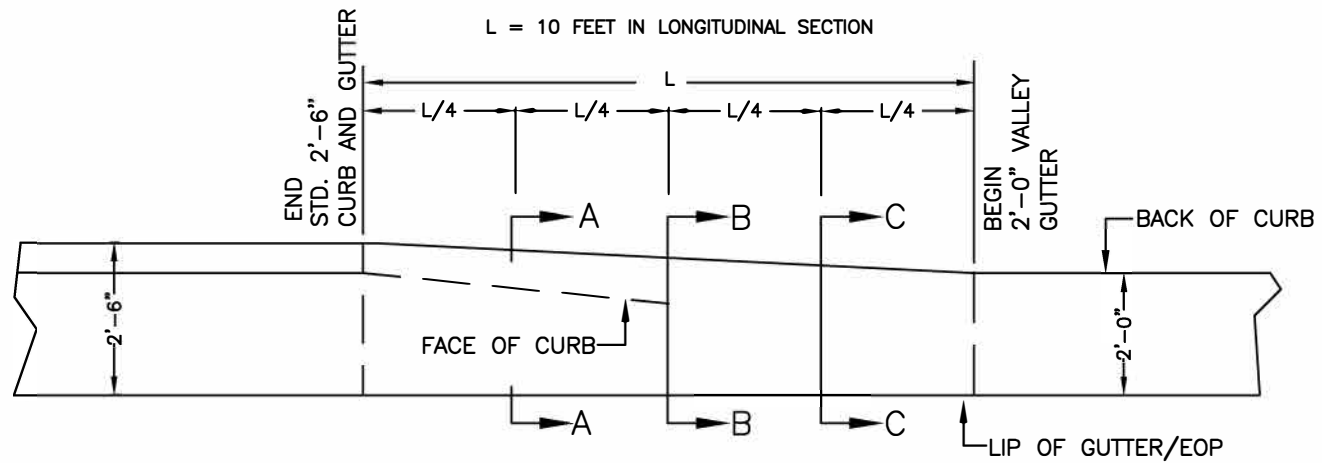
RATE IS VARIABLE AND SHALL BE AS DIRECTED BY THE ENGINEER.
ASPHALT TYPE I19.0C SHALL BE PLACED.

NOTE:

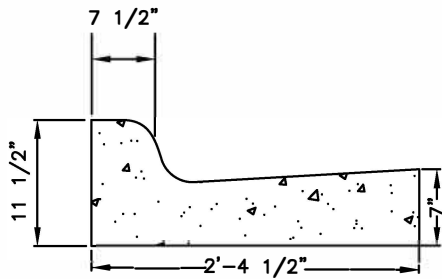
1. SHOULDER RECONSTRUCTION WILL BE AS DIRECTED BY THE ENGINEER.

2022-2023
UNION COUNTY RESURFACING

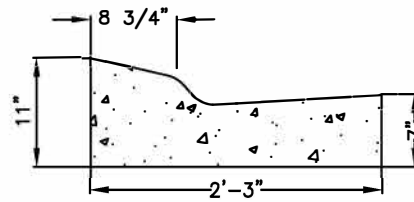
SCALE	-NA-		REVISIONS
DATE	10/21		
DWG. BY	AMO		
DESIGN BY	AMO		
APPROVED			



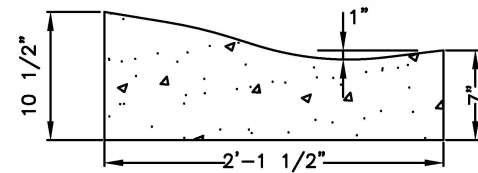
PLAN VIEW



SECTION A-A



SECTION B-B



SECTION C-C

NOTES:

1. TRANSITION IS NOT TO BE LOCATED WITHIN THE CURB RADIUS.

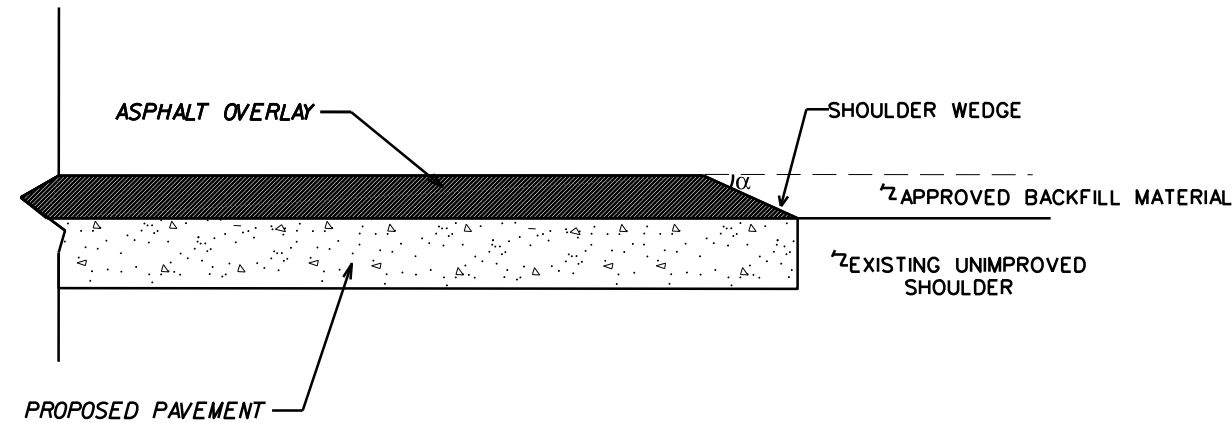
NOT TO SCALE

CURB TRANSITION
2'6" CURB AND GUTTER TO 2'-0" VALLEY GUTTER

NOTES:

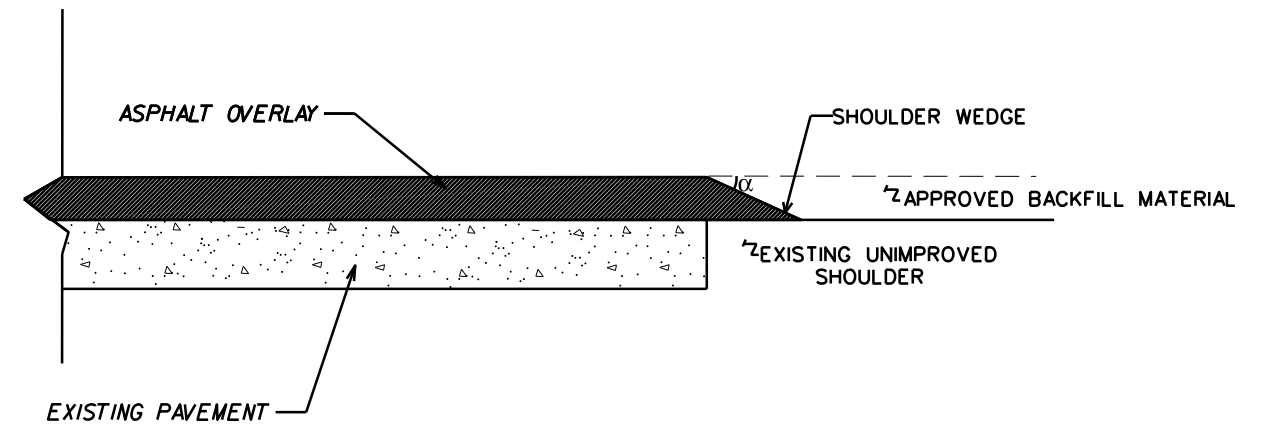
- 1) DETAIL DOES NOT APPLY TO OGAF C AND ULTRA-THIN BONDED WEARING COURSE.
- 2) BACKFILL SHOULDER WITH APPROVED MATERIAL.
- 3) THE SHOULDER WEDGE DEVICE MAY BE DISENGAGED AT PAVED DRIVEWAYS AND SIDE STREETS.

STATE	PROJECT NO.	SHEET NO.	TOTAL SHEETS
N.C.	2022CPT.10.12.10901 2022CPT.10.12.20901	15	
F.A. PROJECT NO.			



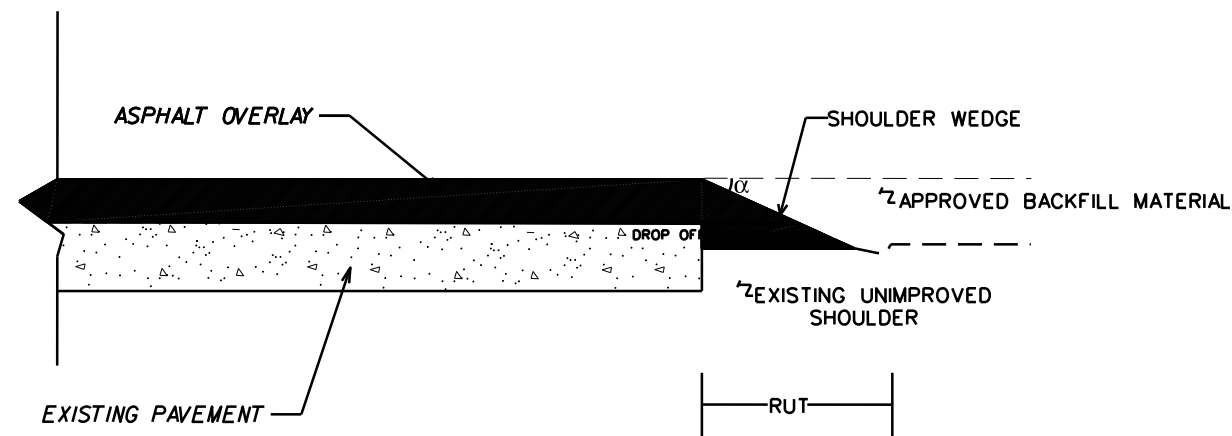
SHOULDER WEDGE DETAIL

(RESURFACING PROJECTS W/ WIDENING OR WITH EXISTING PAVED SHOULDER HAVING NO DROPOFFS)



SHOULDER WEDGE DETAIL

(RESURFACING PROJECTS W/ NO WIDENING)



SHOULDER WEDGE DETAIL
(RESURFACING ADJACENT TO RUTTED SHOULDER)

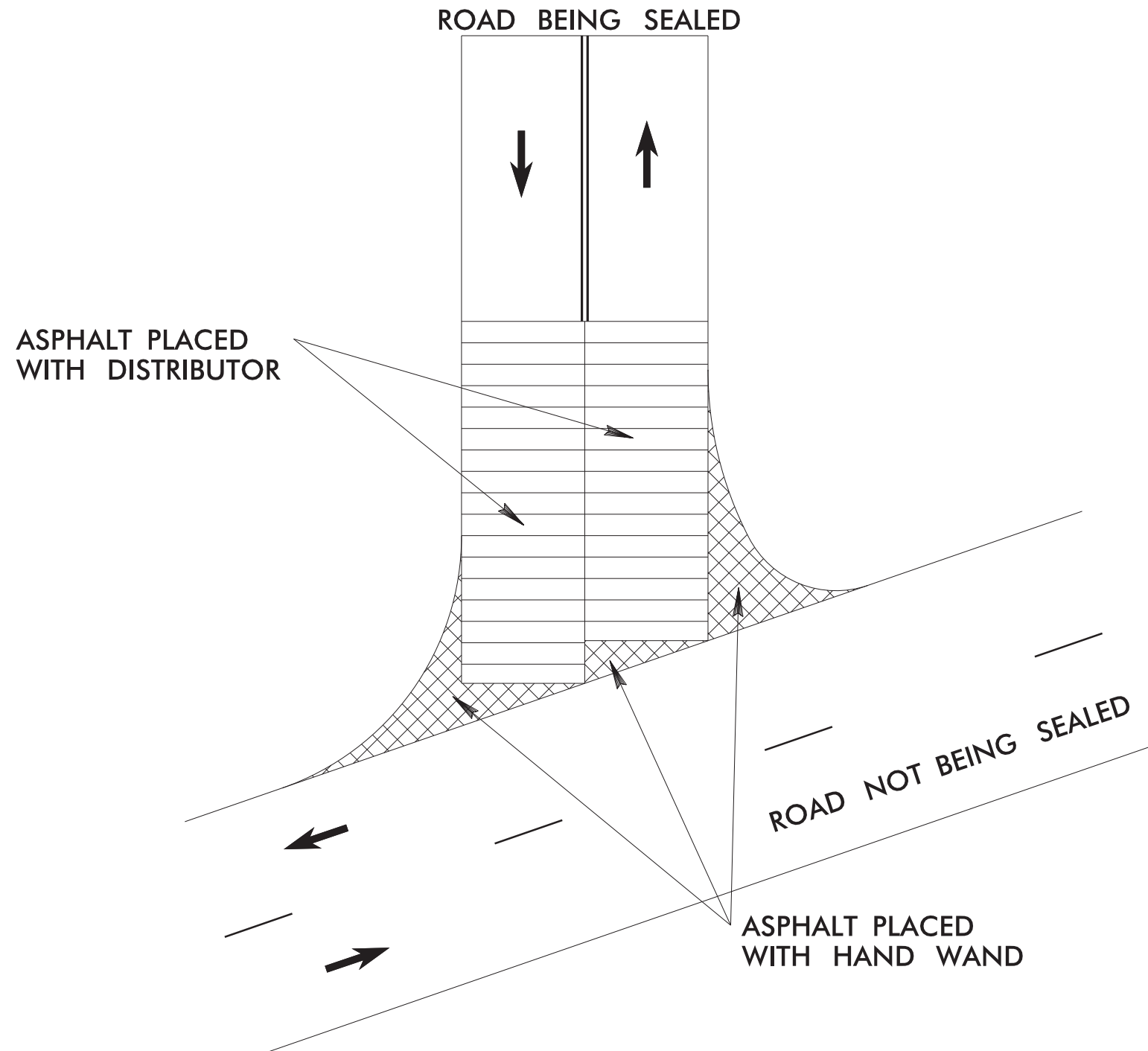
$\alpha = 30$ DEGREES

SHOULDER WEDGE DETAILS		
SCALE	-NA-	REVISIONS
DATE	11/20	
DWG. BY	AMO	
DESIGN BY	AMO	
APPROVED		



INTERSECTION EMULSION PLACEMENT TWO LANE TWO WAY ROADWAY

STATE	PROJECT NO.	SHEET NO.	TOTAL SHEETS
N.C.	2022CPT.10.12.10901 2022CPT.10.12.20901		
F.A. PROJECT NO.			

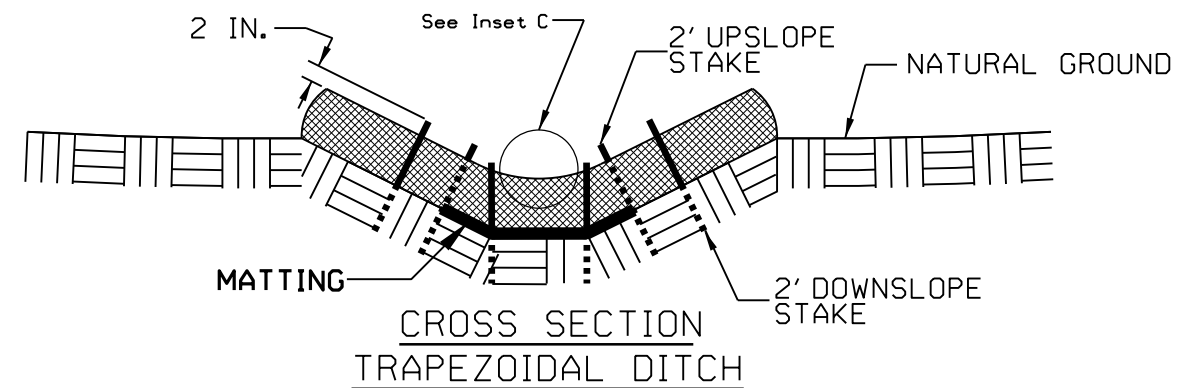
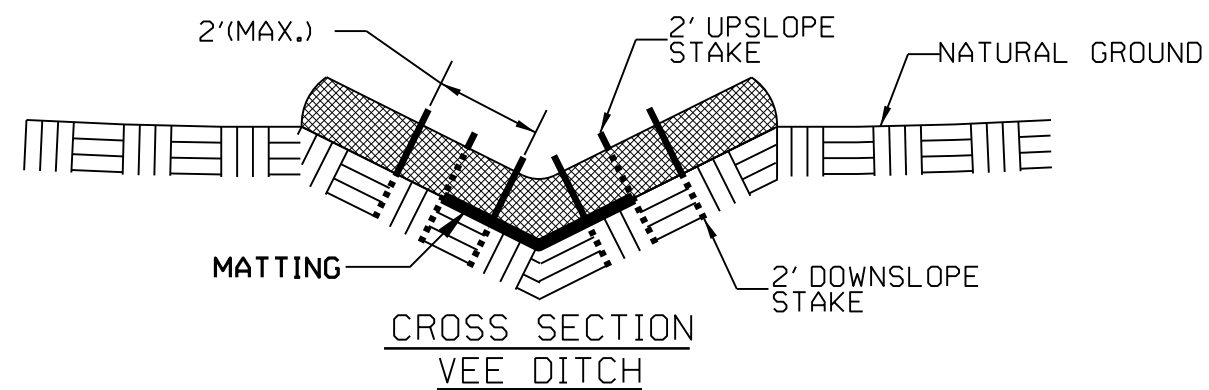
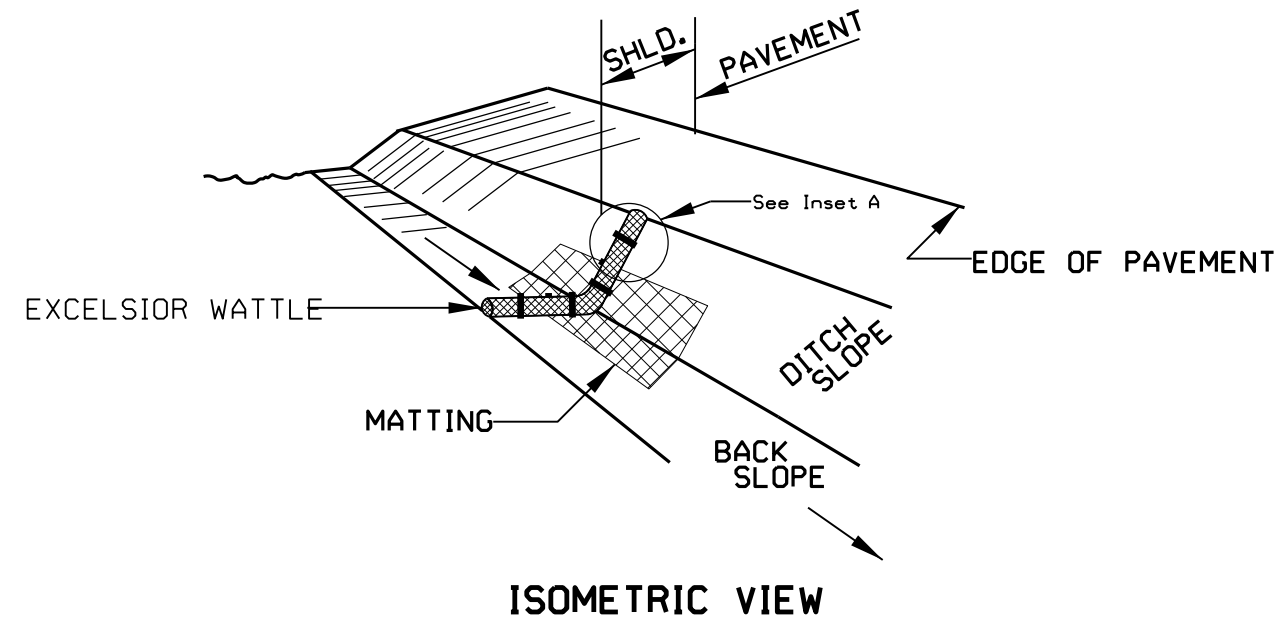


LEGEND

- ➔ DIRECTION OF TRAFFIC FLOW
- SKIP LINES
- === DOUBLE YELLOW LINES

INTERSECTION EMULSION PLACEMENT			REVISIONS
SCALE	N/A		
DATE	9-2019		
DWG. BY	TBL		
DESIGN BY	TBL		
APPROVED	TWB		

WATTLE WITH POLYACRYLAMIDE DETAIL



NOTES:

USE MINIMUM 12 IN. DIAMETER EXCELSIOR WATTLE.

USE 2 FT. WOODEN STAKES WITH A 2 IN. BY 2 IN. CROSS SECTION.

INSTALL A MINIMUM OF 2 UPSLOPE STAKES AND 4 DOWNSLOPE STAKES AT AN ANGLE TO WEDGE WATTLE TO BOTTOM OF DITCH.

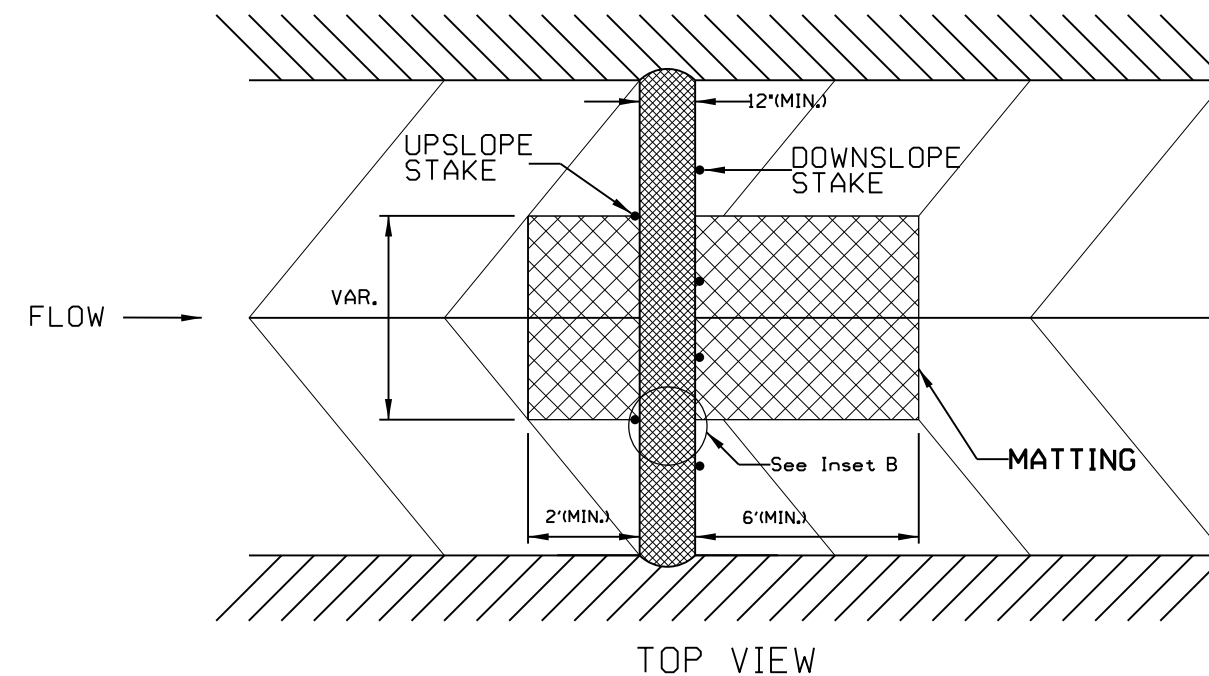
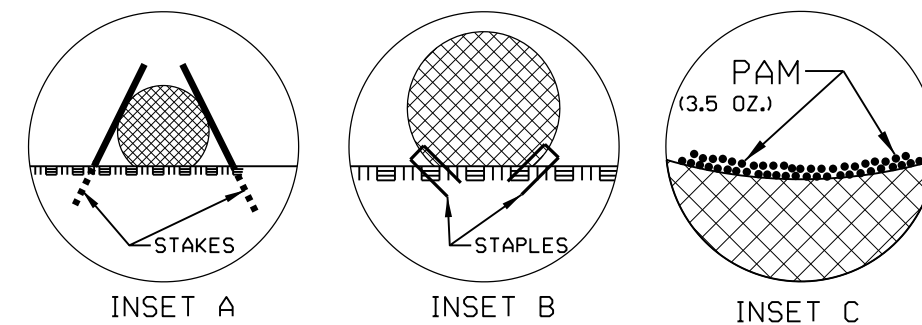
PROVIDE STAPLES MADE OF 0.125 IN. DIAMETER STEEL WIRE FORMED INTO A U SHAPE NOT LESS THAN 12" IN LENGTH.

INSTALL STAPLES APPROXIMATELY EVERY 1 LINEAR FOOT ON BOTH SIDES OF WATTLE AND AT EACH END TO SECURE IT TO THE SOIL.

INSTALL MATTING IN ACCORDANCE WITH SECTION 1631 OF THE STANDARD SPECIFICATIONS.

PRIOR TO POLYACRYLAMIDE (PAM) APPLICATION, OBTAIN A SOIL SAMPLE FROM PROJECT LOCATION, AND FROM OFFSITE MATERIAL, AND ANALYZE FOR APPROPRIATE PAM FLOCCULANT TO BE APPLIED TO EACH WATTLE.

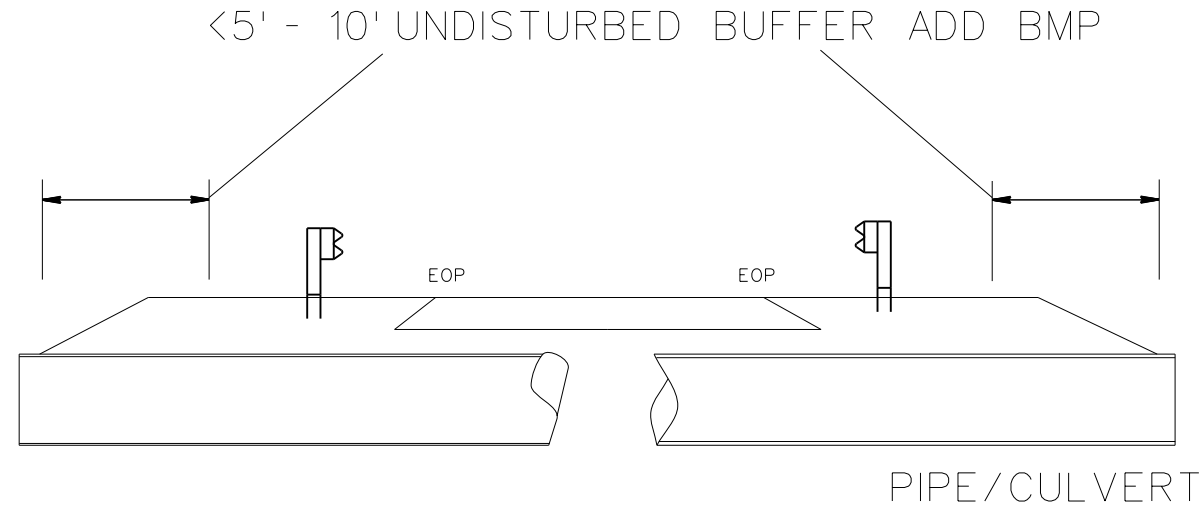
INITIALLY APPLY 3.5 OUNCES OF ANIONIC OR NEUTRALLY CHARGED POLYACRYLAMIDE (PAM) OVER WATTLE WHERE WATER WILL FLOW AND AFTER EVERY RAINFALL EVENT THAT IS EQUAL TO OR EXCEEDS 0.50 IN.



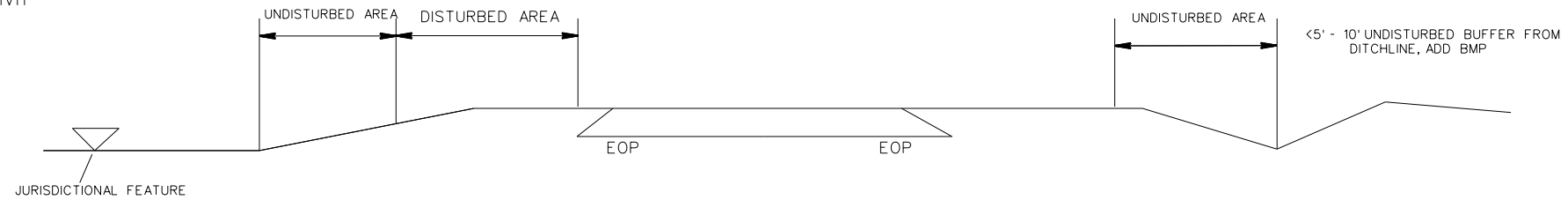
NOTES: LESS THAN 5' - 10' UNDISTURBED BUFFER FROM ROW, DITCHLINE, WATER FEATURE, OR DRAINAGE INLET, ADD BMP.

BMP OPTIONS: WATTLE OR SILT FENCE

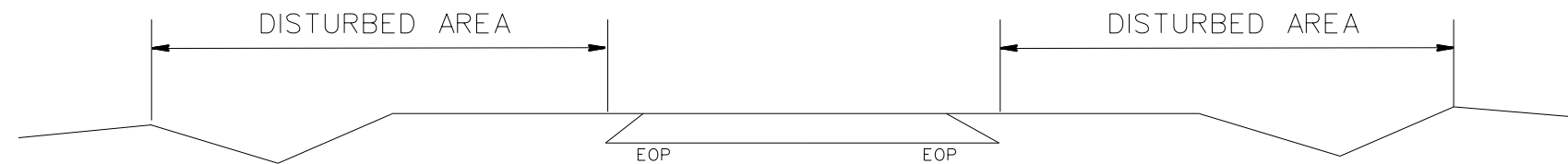
STATE	PROJECT NO.	SHEET NO.	TOTAL SHEETS
N.C.	2022CPT.10.12.10901 2022CPT.10.12.20901	EC2	
F.A. PROJECT NO.			



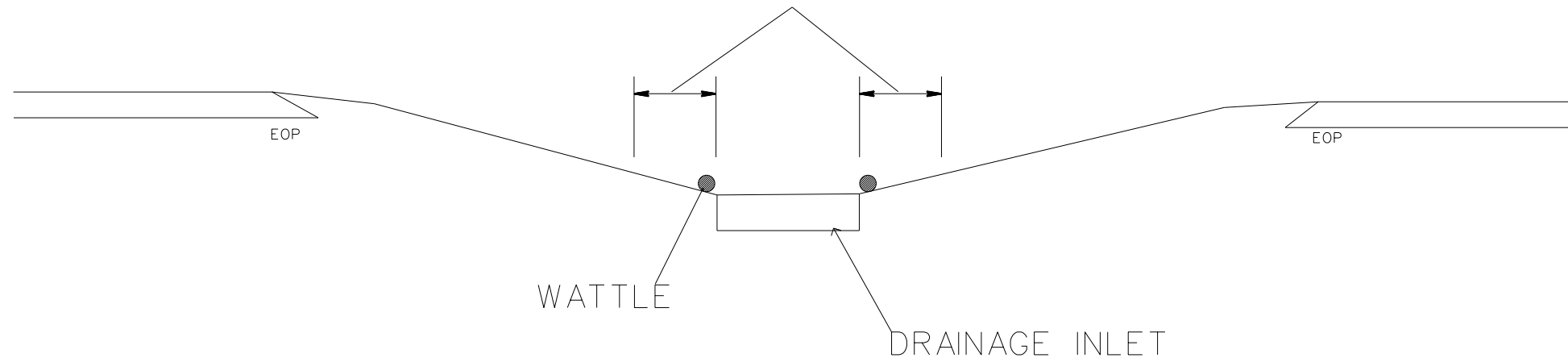
<5' - 10' UNDISTURBED BUFFER FROM JURISDICTIONAL FEATURE ADD BMP



USE BMP'S IF SHOULDERS AND/OR FRONTSLOPES AND/OR DITCHLINE AND/OR BACKSLOPES ARE DISTURBED



<5' - 10' UNDISTURBED BUFFER FROM INLET, ADD WATTLE



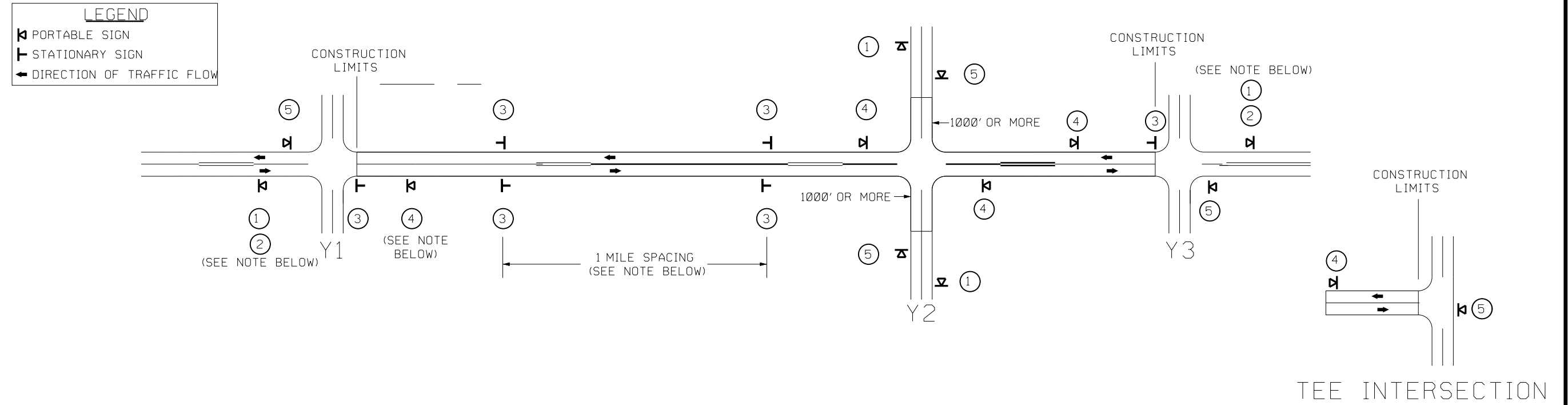
EROSION CONTROL DETAIL

SCALE	-NA-
DATE	11/20
DWG. BY	AMO
DESIGN BY	AMO
APPROVED	



REVISIONS	

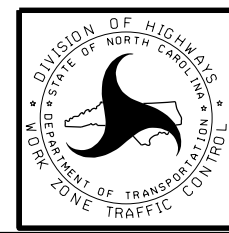
SIGNING FOR ASPHALT SURFACE TREATMENT



SIGNING NOTES AND PLACEMENT PER DIRECTION	<p>① <p>② </p></p>	<p>STATIONARY SIGNING NOT REQUIRED FOR THE FOLLOWING -Y- LINE CONDITIONS: 1) LESS THAN 1000' OF RESURFACING ALONG -Y- LINE 2) SUBDIVISION ROADS 3) DEAD END ROADS</p> <p>WHEN PAVING/CONSTRUCTION ACTIVITIES PROCEED ACROSS AN UNSIGNED -Y- LINE, PORTABLE ADVANCE WARNING SIGNS SHALL BE USED ALONG THE -Y- LINE AS SHOWN BELOW. REMOVE UPON COMPLETION OF WORK.</p> <div style="display: flex; justify-content: space-around;"> <div style="text-align: center;"> PLACED 500' IN ADVANCE OF FLAGGER. </div> <div style="text-align: center;"> PLACED 250' IN ADVANCE OF FLAGGER. </div> </div>
	<p>③ - STARTING WITH "LOOSE GRAVEL" (W8-7) FOLLOWED BY "UNMARKED PAVEMENT". - PLACE INITIALLY AT THE CONSTRUCTION LIMITS AND SPACED 1 MILE APART THEREAFTER.</p> <p> </p>	
	<p>④ - INSTALL 500' +/- FROM EACH -Y- LINE APPROACH AS SHOWN ABOVE. - FOR MULTIPLE -Y- LINES THAT ARE SEPARATED BY 0.25 MILES OR LESS, TREAT AS A SINGLE UNIT AND INSTALL WITHIN 500' OF EACH APPROACH. - A MAXIMUM OF 2 SIGN SETS PER MILE. DO NOT INSTALL WHEN -Y- LINES ARE WITHIN 0.5 MILES FROM "END ROAD WORK" SIGN.</p>	
	<p>⑤ </p>	
	<p>THE ABOVE SIGNS ARE ALL THAT ARE REQUIRED FOR A CONTRACTOR TO BEGIN A RESURFACING CONTRACT. ANY ADDITIONAL SIGNS REQUESTED BY NCDOT DIVISIONS SHALL BE INSTALLED WITHIN 7 BUSINESS DAYS OF THE START OF CONTRACT WORK.</p>	



MAPS LESS THAN 2 MILES

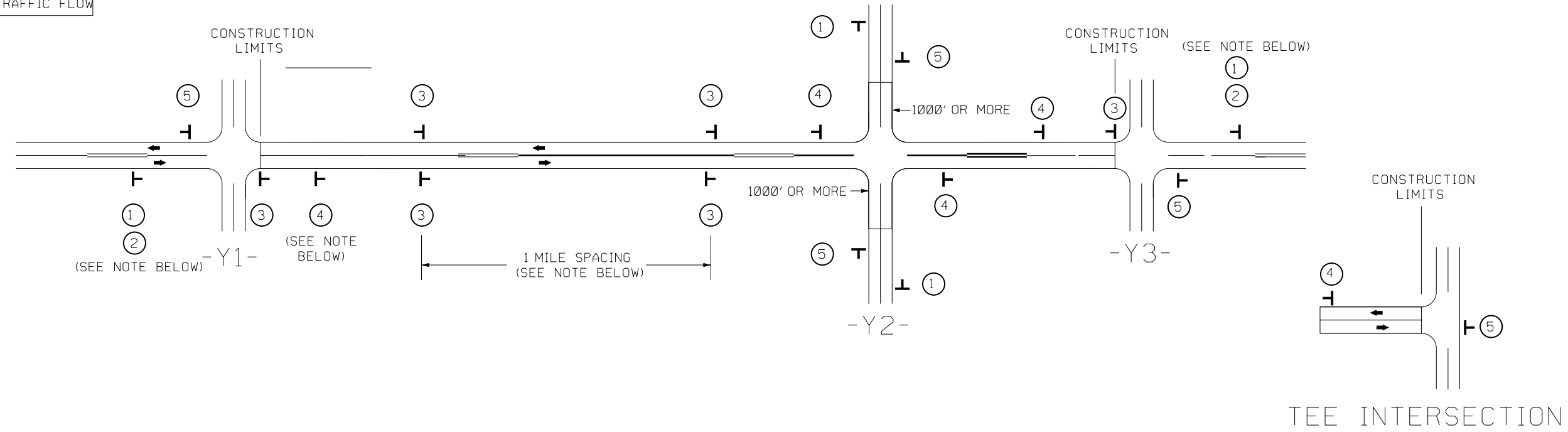
FOR AST RESURFACING MAPS WITH CONSTRUCTION LIMITS LESS THAN 2 MILES IN LENGTH, USE A STATIONARY "LOOSE GRAVEL" SIGN AT THE BEGINNING CONSTRUCTION LIMIT FOLLOWED BY AN "UNMARKED PAVEMENT" SIGN MIDWAY THROUGH AND AN "END ROAD WORK" SIGN AT THE END CONSTRUCTION LIMIT.



ADVANCE WARNING SIGNS FOR 2-LANE ROADWAY ASPHALT SURFACE TREATMENT





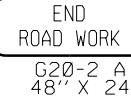
SIGNING FOR RESURFACING PROJECTS

LEGEND
 STATIONARY SIGN
 DIRECTION OF TRAFFIC FLOW



MAINLINE (-L-) SIGNING

-Y- LINE SIGNING

SIGNING NOTES AND PLACEMENT PER DIRECTION	①	 W20-1 48" X 48" PLACE 1000' PRIOR TO BEGINNING OF CONSTRUCTION LIMITS. ONLY USED ON -Y- LINES IF RESURFACING LIMITS EXTEND 1000' ALONG -Y- LINE.
	②	 W7-3aP 24" X 18" #2 SIGN ONLY USED WHEN CONSTRUCTION LIMITS ARE 2 OR MORE MILES IN LENGTH. (NO FRACTIONAL OR DECIMAL NUMBERS)
	③	 SP 13107 48" X 48" - PLACE INITIALLY AT THE CONSTRUCTION LIMITS AND SPACE 1 MILE APART THEREAFTER. - AT TEE INTERSECTIONS INSTALL INITIALLY 1/2 MILE FROM INTERSECTION AND SPACE 1 MILE APART THEREAFTER.
	④	 SP 13106 48" X 48" - THESE ARE FOR -Y- LINES THAT ARE "THROUGH" ROADWAYS. - DEAD END AND SUBDIVISION ROADS ARE NOT "THROUGH" ROADWAYS. - INSTALL 500' +/- FROM EACH -Y- LINE APPROACH AS SHOWN ABOVE. - FOR MULTIPLE -Y- LINES THAT ARE SEPARATED BY 0.25 MILES OR LESS, TREAT AS A SINGLE UNIT AND INSTALL WITHIN 500' OF EACH APPROACH. - A MAXIMUM OF 2 SIGN SETS PER MILE. DO NOT INSTALL WHEN -Y- LINES ARE WITHIN 0.5 MILES FROM "END ROAD WORK" SIGN. - FOR TEE INTERSECTIONS, INSTALL WITHIN 500' +/- OF THE INTERSECTION ALONG -L- LINE.
	⑤	 G20-2 A 48" X 24" PLACE 500' FOLLOWING THE END OF CONSTRUCTION LIMITS OR AS SHOWN WHEN WORK ENDS AT A 3-WAY TEE INTERSECTION.

NO REQUIRED STATIONARY SIGNING FOR THE FOLLOWING -Y- LINE CONDITIONS:
 1) LESS THAN 1000' OF RESURFACING ALONG -Y- LINE
 2) SUBDIVISION ROADS
 3) DEAD END ROADS

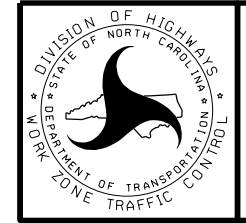
WHEN PAVING/CONSTRUCTION ACTIVITIES PROCEED ACROSS AN UNSIGNED -Y- LINE, PORTABLE ADVANCE WARNING SIGNS SHALL BE USED ALONG THE -Y- LINE AS SHOWN BELOW. REMOVE UPON COMPLETION OF WORK.



THE ABOVE SIGNS ARE ALL THAT ARE REQUIRED FOR A CONTRACTOR TO BEGIN A RESURFACING CONTRACT. ANY ADDITIONAL SIGNS REQUESTED BY NCDOT DIVISIONS SHALL BE INSTALLED WITHIN 7 BUSINESS DAYS OF THE START OF CONTRACT WORK.

MAPS LESS THAN 2 MILES

FOR RESURFACING MAPS WITH CONSTRUCTION LIMITS LESS THAN 2 MILES IN LENGTH, NO STATIONARY SIGNS ARE REQUIRED. USE PORTABLE "ROAD UNDER CONSTRUCTION" OR "ROAD WORK AHEAD" SIGNS IN LIEU OF STATIONARY ADVANCE WARNINGS SIGNS.



ADVANCE WARNING SIGNS FOR RURAL AND SUBURBAN 2-LANE ROADWAY RESURFACING

06-DEC-2021 10:02 C:\Users\outen\Documents\CONTRACTS\Resurfacing_Raleigh Let Contract\2022-2023\Union #2\Rev_Package\Split_Union #2 Typicals 2022-2023.dgn

PROJECT NO.	SHEET NO.	TOTAL NO.
2022CPT.10.12.10901, 2022CPT.10.12.20901	22	23

SUMMARY OF QUANTITIES (Continued)

PROJECT NO	COUNTY	MAP NO	ROUTE	DESCRIPTION	TYP NO	LENGTH	WIDTH	275200000-E	280000000-N	283000000-N	284500000-N	460000000-N	525500000-N	600000000-E	609000000-E	601200000-E	607100000-E	607102000-E	
								REMOVE AND REPLACE CURB AND GUTTER TRANSITION SECTION	ADJ. OF CATCH BASIN	ADJ. OF MANHOLES	ADJ. OF METER OR VALVE BOX	TEMPORARY CURB RAMP	PORTABLE LIGHTING	TEMPORARY SILT FENCE	STONE FOR EROSION CONTROL, CLASS B	SEDIMENT CONTROL STONE	WATTLE	POLYACRYLAMIDE (PAM)	
								LF	EA	EA	EA	EA	LS	LF	TN	TN	LF	LB	
2022CPT.10.12.10901	Union	1	NC 84	FROM SR 1934 COX ROAD TO SR 1318 SILVERLEAF DRIVE MILEPOST 1.4 TO 4.7	1 to 5	3.3	25-72			2	6	1	1	495	66	33	495	1	
TOTAL FOR MAP NO. 1										2	6	1	1	495	66	33	495	1	
TOTAL FOR PROJ NO. 2022CPT.10.12.10901										2	6	1	1	495	66	33	495	1	
2022CPT.10.12.20901	Union	2	SR 1319 ENNIS ROAD	FROM NC 16 TO SR 1315 NEWTOWN ROAD MILEPOST 0 TO 0.98	8	0.98	23							295	30	15	295	1	
TOTAL FOR MAP NO. 2														295	30	15	295	1	
2022CPT.10.12.20901	Union	3	SR 3688 PROPEL WAY	FROM SR 1349 AIRPORT ROAD TO CORPORATE CENTER DRIVE MILEPOST 0 TO 0.34	1	0.34	20							51	7	4	51	0	
TOTAL FOR MAP NO. 3														51	7	4	51	0	
2022CPT.10.12.20901	Union	4	SR 2530 GREYLYN DRIVE	FROM SR 1358 FOREST LAWN DRIVE TO END OF MAINTANANCE MILEPOST 0 TO 0.28	7	0.28	18							42	6	3	42	0	
TOTAL FOR MAP NO. 4														42	6	3	42	0	
2022CPT.10.12.20901	Union	5	SR 2531 CAROLE COURT	FROM SR 2530 GREYLYN COURT TO END OF MAINTANANCE MILEPOST 0 TO 0.18	7	0.18	18							27	4	2	27	0	
TOTAL FOR MAP NO. 5														27	4	2	27	0	
2022CPT.10.12.20901	Union	6	SR 2624 MONTE DRIVE	FROM SR 1333 CLARENCE SECREST ROAD TO END OF MAINTANANCE MILEPOST 0 TO 0.56	7	0.56	20							85	11	6	85	0	
TOTAL FOR MAP NO. 6														85	11	6	85	0	
2022CPT.10.12.20901	Union	7	SR 2525 KRISTEN CIRCLE	FROM SR 2624 MONTE DRIVE TO END OF MAINTANANCE MILEPOST 0 TO 0.14	7	0.14	18-20							21	3	2	21	0	
TOTAL FOR MAP NO. 7														21	3	2	21	0	
2022CPT.10.12.20901	Union	8	SR 2827 TAMMY DRIVE	FROM SR 1333 CLARENCE SECREST ROAD TO SR 2624 MONTE DRIVE MILEPOST 0 TO 0.36	7	0.36	20							54	7	4	54	0	
TOTAL FOR MAP NO. 8														54	7	4	54	0	
2022CPT.10.12.20901	Union	9	SR 2826 KAREN LANE	FROM SR 2827 TAMMY DRIVE TO END OF MAINTANANCE MILEPOST 0 TO 0.52	7	0.52	18-20							78	10	5	78	0	
TOTAL FOR MAP NO. 9														78	10	5	78	0	
2022CPT.10.12.20901	Union	10	SR 2652 BRICK LANDING DRIVE	FROM SR 1515 SARDIS CHURCH ROAD TO END OF MAINTANANCE MILEPOST 0 TO 0.24	9	0.24	30	40	2			1							
TOTAL FOR MAP NO. 10									40	2		1							
2022CPT.10.12.20901	Union	11	SR 2653 NEW CASTLE LANE	FROM SR 2652 BRICK LANDING DRIVE TO END OF MAINTANANCE MILEPOST 0 TO 0.06	9	0.06	18												
TOTAL FOR MAP NO. 11																			
2022CPT.10.12.20901	Union	12	SR 2654 MANCHESTER LANE	FROM SR 2652 BRICK LANDING DRIVE TO END OF MAINTANANCE MILEPOST 0 TO 0.07	9	0.07	18												
TOTAL FOR MAP NO. 12																			
2022CPT.10.12.20901	Union	13	SR 2655 RAMS COURT	FROM SR 2652 BRICK LANDING DRIVE TO END OF MAINTANANCE MILEPOST 0 TO 0.03	9	0.03	18												
TOTAL FOR MAP NO. 13																			
2022CPT.10.12.20901	Union	14	SR 2656 WINDJAMMER DRIVE	FROM SR 2652 BRICK LANDING DRIVE TO SR 2659 WHITE CLIFFS DRIVE MILEPOST 0 TO 0.16	9	0.16	30												
TOTAL FOR MAP NO. 14																			
2022CPT.10.12.20901	Union	15	SR 2657 PRESTWICK LANE	FROM SR 2656 WINDJAMMER DRIVE TO END OF MAINTANANCE MILEPOST 0 TO 0.03	9	0.03	18												
TOTAL FOR MAP NO. 15																			
2022CPT.10.12.20901	Union	16	SR 2658 HEATHROW COURT	FROM SR 2656 WINDJAMMER DRIVE TO END OF MAINTANANCE MILEPOST 0 TO 0.04	9	0.04	18												
TOTAL FOR MAP NO. 16																			
2022CPT.10.12.20901	Union	17	SR 2659 WHITE CLIFFS DRIVE	FROM END OF MAINTANANCE TO END OF MAINTANANCE MILEPOST 0 TO 0.11	9	0.11	20												
TOTAL FOR MAP NO. 17																			
2022CPT.10.12.20901	Union	18	SR 2660 SWAN SEA COURT	FROM SR 2652 BRICK LANDING DRIVE TO END OF MAINTANANCE MILEPOST 0 TO 0.04	9	0.04	18												
TOTAL FOR MAP NO. 18																			
2022CPT.10.12.20901	Union	19	SR 2352 WEST STREET	FROM 3RD AVENUE TO 1ST AVENUE MILEPOST 0-0.14	6	0.14	18							9	3	2	9		
TOTAL FOR MAP NO. 19														9	3	2	9		
TOTAL FOR PROJ NO. 2022CPT.10.12.20901									40	2		1		662	81	43	662	1	
GRAND TOTAL								7.58	40	2	2	6	2	1	1,157	147	76	1,157	2

THERMOPLASTIC AND PAINT QUANTITIES

PROJECT NO	COUNTY	MAP NO	ROUTE	DESCRIPTION	TYP NO	LANES	LANE TYPE	LENGTH	WIDTH	441300000-E	444700000-E	445700000-N	451000000-N	468500000-E	469500000-E	470000000-E	472000000-E	472500000-E				481000000-E		489100000-E	489500000-N								
										WORK ZONE ADVANCE/GENERAL WARNING SIGNING	PEDESTRIAN CHANNELIZING DEVICES	TEMPORARY TRAFFIC CONTROL	LAW ENFORCEMENT	THERMO PVT MKG LINES 4",90 MILS WHITE	THERMO PVT MKG LINES 4",90 MILS YELLOW	THERMO PVT MKG LINES 8", 90 MILS WHITE	THERMO PVT MKG LINES 12", 90 MILS WHITE	THERMO PVT MKG LINES 12", 90 MILS YELLOW	THERMO PVT MKG CHARACTER 90 MILS (SCHOOL)	THERMO PVT MKG CHARACTER 90 MILS (ONLY)	THERMO PVT MKG SYMBOL 90 MILS (LEFT ARROW)	THERMO PVT MKG SYMBOL 90 MILS (RIGHT ARROW)	THERMO PVT MKG SYMBOL 90 MILS (STRAIGHT)	THERMO PVT MKG SYMBOL 90 MILS (MERGE)	4" WHITE PAINT	4" YELLOW PAINT	THERMO PVT MKG LINES (24", 90 MILS)	NON-CAST IRON SNOWPLOWABLE PAVEMENT MARKER					
								MI	FT	SF	LF	LS	HR	LF	LF	LF	LF	EA	EA	EA	EA	EA	EA	EA	EA								
2022CPT.10.12.10901	Union	1	NC 84	FROM SR 1934 COX ROAD TO SR 1318 SILVERLEAF DRIVE MILEPOST 1.4 TO 4.7	5-Jan	2	MU	3.3	25-72	369.6	8	1	20	41,240	46,010	230	65	950	12	8	68	10	10	2	1,045	46,010	930	645					
TOTAL FOR MAP NO. 1								3.3		369.6	8	1	20	41,240	46,010	230	65	950	12	8	68	10	10	2	1,045	46,010	930	645					
TOTAL FOR PROJ NO. 2022CPT.10.12.10901								3.3		369.6	8	1	20	41,240	46,010	230	65	950	12	8	68	10	10	2	1,045	46,010	930	645					
2022CPT.10.12.20901	Union	2	SR 1319 ENNIS ROAD	FROM NC 16 TO SR 1315 NEWTOWN ROAD MILEPOST 0 TO 0.98		2	2WU	0.98	23					10,290	10,290													48					
TOTAL FOR MAP NO. 2								0.98							10,290	10,290														48			
2022CPT.10.12.20901	Union	3	SR 3688 PROPEL WAY	FROM SR 1349 AIRPORT ROAD TO CORPORATE CENTER DRIVE MILEPOST 0 TO 0.34		2	2WU	0.34	20																7,215	4,918	28						
TOTAL FOR MAP NO. 3								0.34																			7,215	4,918	28				
2022CPT.10.12.20901	Union	4	SR 2530 GREYLYN DRIVE	FROM SR 1358 FOREST LAWN DRIVE TO END OF MAINTANANCE MILEPOST 0 TO 0.28		2	2WU	0.28	18	80.0																							
TOTAL FOR MAP NO. 4								0.28		80.0																							
2022CPT.10.12.20901	Union	5	SR 2531 CAROLE COURT	FROM SR 2530 GREYLYN COURT TO END OF MAINTANANCE MILEPOST 0 TO 0.18		2	2WU	0.18	18	80.0																							
TOTAL FOR MAP NO. 5								0.18		80.0																							
2022CPT.10.12.20901	Union	6	SR 2624 MONTE DRIVE	FROM SR 1333 CLARENCE SECREST ROAD TO END OF MAINTANANCE MILEPOST 0 TO 0.56		2	2WU	0.56	20	80.0																							
TOTAL FOR MAP NO. 6								0.56		80.0																							
2022CPT.10.12.20901	Union	7	SR 2525 KRISTEN CIRCLE	FROM SR 2624 MONTE DRIVE TO END OF MAINTANANCE MILEPOST 0 TO 0.14		2	2WU	0.14	18-20	80.0																							
TOTAL FOR MAP NO. 7								0.14		80.0																							
2022CPT.10.12.20901	Union	8	SR 2827 TAMMY DRIVE	FROM SR 1333 CLARENCE SECREST ROAD TO SR 2624 MONTE DRIVE MILEPOST 0 TO 0.36		2	2WU	0.36	20	80.0																							
TOTAL FOR MAP NO. 8								0.36		80.0																							
2022CPT.10.12.20901	Union	9	SR 2826 KAREN LANE	FROM SR 2827 TAMMY DRIVE TO END OF MAINTANANCE MILEPOST 0 TO 0.52		2	2WU	0.52	18-20	80.0																							
TOTAL FOR MAP NO. 9								0.52		80																							
2022CPT.10.12.20901	Union	10	SR 2652 BRICK LANDING DRIVE	FROM SR 1515 SARDIS CHURCH ROAD TO END OF MAINTANANCE MILEPOST 0 TO 0.24		2	2WU	0.24	30		8																						
TOTAL FOR MAP NO. 10								0.24			8																						
2022CPT.10.12.20901	Union	11	SR 2653 NEW CASTLE LANE	FROM SR 2652 BRICK LANDING DRIVE TO END OF MAINTANANCE MILEPOST 0 TO 0.06		2	2WU	0.06	18																								
TOTAL FOR MAP NO. 11								0.06																									
2022CPT.10.12.20901	Union	12	SR 2654 MANCHESTER LANE	FROM SR 2652 BRICK LANDING DRIVE TO END OF MAINTANANCE MILEPOST 0 TO 0.07		2	2WU	0.07	18																								
TOTAL FOR MAP NO. 12								0.07																									
2022CPT.10.12.20901	Union	13	SR 2655 RAMS COURT	FROM SR 2652 BRICK LANDING DRIVE TO END OF MAINTANANCE MILEPOST 0 TO 0.03		2	2WU	0.03	18																								
TOTAL FOR MAP NO. 13								0.03																									
2022CPT.10.12.20901	Union	14	SR 2656 WINDJAMMER DRIVE	FROM SR 2652 BRICK LANDING DRIVE TO SR 2659 WHITE CLIFFS DRIVE MILEPOST 0 TO 0.16		2	2WU	0.16	30																								
TOTAL FOR MAP NO. 14								0.16																									
2022CPT.10.12.20901	Union	15	SR 2657 PRESTWICK LANE	FROM SR 2656 WINDJAMMER DRIVE TO END OF MAINTANANCE MILEPOST 0 TO 0.03		2	2WU	0.03	18																								
TOTAL FOR MAP NO. 15								0.03																									
2022CPT.10.12.20901	Union	16	SR 2658 HEATHROW COURT	FROM SR 2656 WINDJAMMER DRIVE TO END OF MAINTANANCE MILEPOST 0 TO 0.04		2	2WU	0.04	18																								
TOTAL FOR MAP NO. 16								0.04																									
2022CPT.10.12.20901	Union	17	SR 2659 WHITE CLIFFS DRIVE	FROM END OF MAINTANANCE TO END OF MAINTANANCE MILEPOST 0 TO 0.11		2	2WU	0.11	20																								
TOTAL FOR MAP NO. 17								0.11																									
2022CPT.10.12.20901	Union	18	SR 2660 SWAN SEA COURT	FROM SR 2652 BRICK LANDING DRIVE TO END OF MAINTANANCE MILEPOST 0 TO 0.04		2	2WU	0.04	18																								
TOTAL FOR MAP NO. 18								0.04																									
2022CPT.10.12.20901	Union	19	SR 2352 WEST STREET	FROM 3RD AVENUE TO 1ST AVENUE MILEPOST 0-0.14		2	2WU	0.14	18																								
TOTAL FOR MAP NO. 19								0.14																									
TOTAL FOR PROJ NO. 2022CPT.10.12.20901								4.28		480	8				10,290	10,290														7,215	4,918	76	
GRAND TOTAL								7.58		850	16	1	20		51,530	56,300	230	65	950	12	8	68	10	10	2	8,260	50,928	1,006	645				
															107,830			1,015		20			90		59,188								