

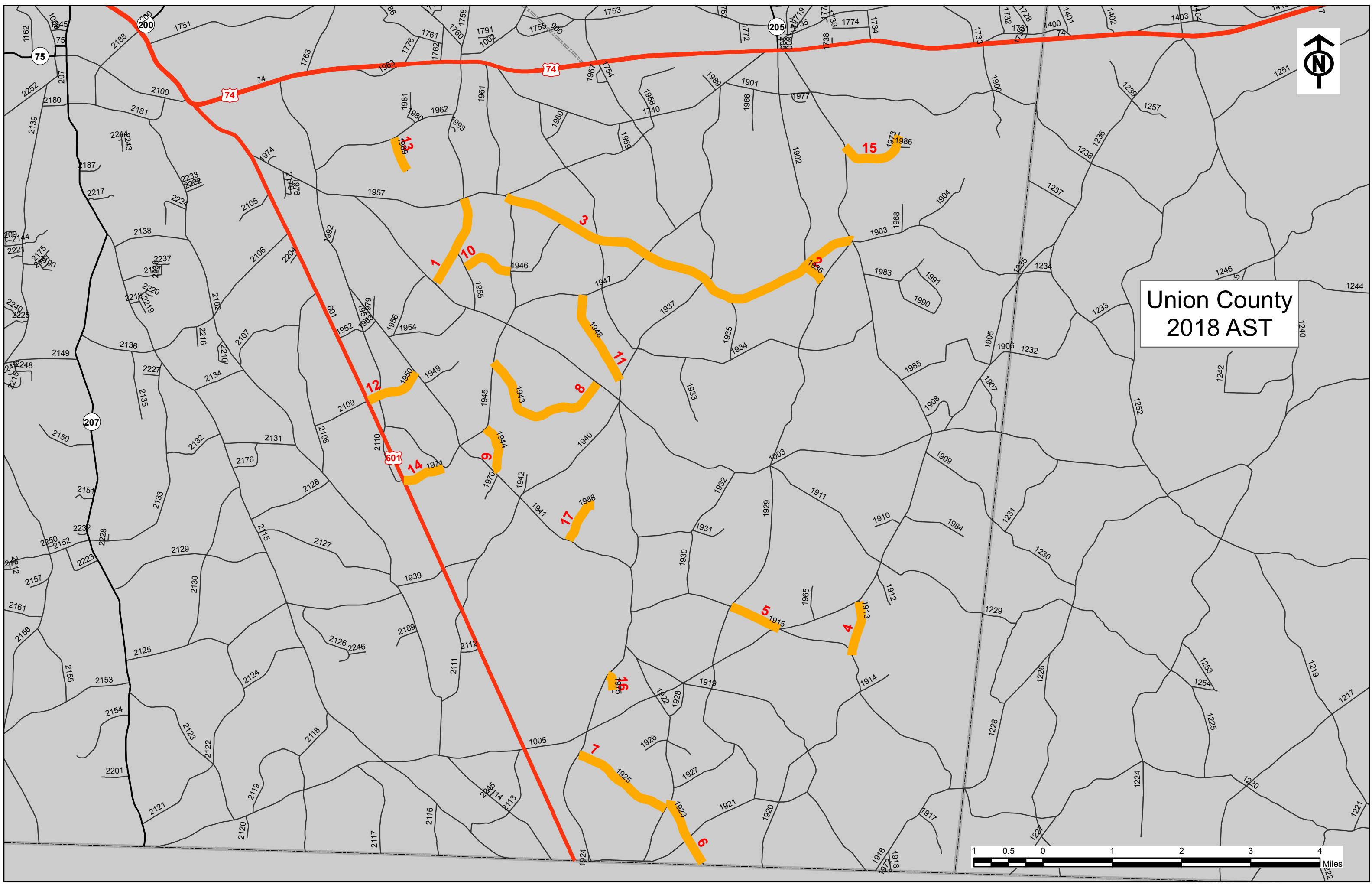
PROJECT NO.	SHEET NO.	TOTAL NO.
2017CPT.10.15.20902.1	1	4

SUMMARY OF QUANTITIES

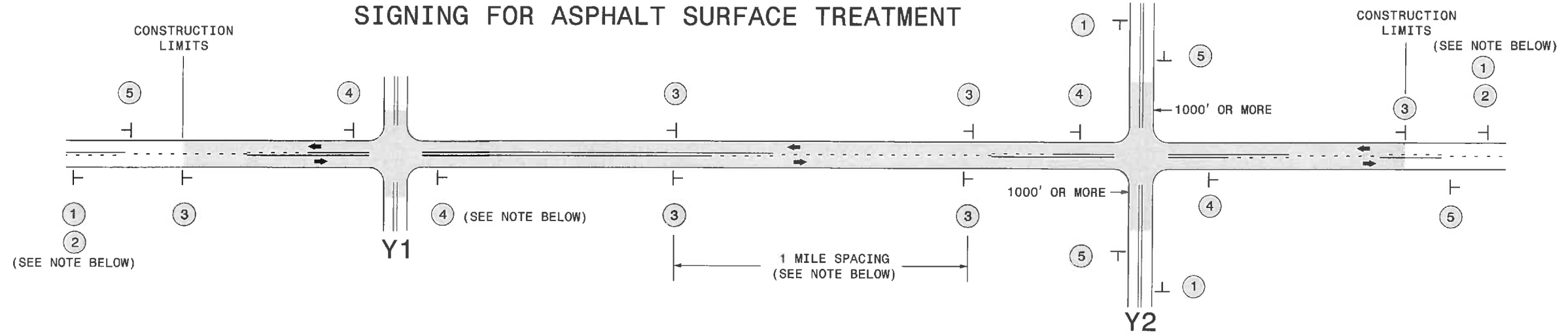
PROJECT NO	COUNTY	MAP NO	ROUTE	DESCRIPTION	BEGIN MP	END MP	LANES	FINAL SURFACE TESTING REQUIRED	WARM MIX ASPHALT REQUIRED	LENGTH MI	WIDTH FT	ASPHALT SURFACE TREATMENT, DOUBLE SEAL SY	EMULSION FOR ASPHALT SURFACE TREATMENT GAL	BLOTTING SAND TON	WORK ZONE ADVANCE/GENERAL WARNING SIGNING SF	TEMPORARY TRAFFIC CONTROL LS
2017CPT.10.15.20902.1	Union	1	WHITMORE RD (SR 1758)	FROM OLD MONROE/MARSHVILLE RD (SR 1757) TO WHITE STORE RD (SR 1003)	5.66	7.00	2	NO	NO	1.34	20	15,723	8,648		112	
TOTAL FOR MAP NO. 1										1.34		15,723	8,648		112	
2017CPT.10.15.20902.1	Union	2	BLAIR RD (SR 1936)	FROM PHILADELPHIA CH RD (SR 1929) TO GILBOA RD (SR 1903)	0	0.32	2	NO	NO	0.32	20	3,755	2,065		56	
TOTAL FOR MAP NO. 2										0.32		3,755	2,065		56	
2017CPT.10.15.20902.1	Union	3	GILBOA CH RD (SR 1903)	FROM LANDSFORD RD (SR 1005) TO OLD MONROE/MARSHVILLE RD (SR 1957)	2.70	8.34	2	NO	NO	5.64	18	59,558	32,757		214	
TOTAL FOR MAP NO. 3										5.64		59,558	32,757		214	
2017CPT.10.15.20902.1	Union	4	CLAYTON RORIE RD (SR 1913)	FROM SMITH TOWN RD (SR 1915) TO LANSFORD RD (SR 1005)	0	0.80	2	NO	NO	0.8	19	8,917	4,904		112	
TOTAL FOR MAP NO. 4										0.8		8,917	4,904		112	
2017CPT.10.15.20902.1	Union	5	SMITH TOWN RD (SR 1915)	FROM LANDSFORD RD (SR 1005) TO PHILADELPHIA CH RD (SR 1922)	3.80	4.57	2	NO	NO	0.77	18	8,131	4,472		112	
TOTAL FOR MAP NO. 5										0.77		8,131	4,472		112	
2017CPT.10.15.20902.1	Union	6	RIGGINS RD (SR 1923)	FROM PHILADELPHIA CH RD (SR 1922) TO THE SOUTH CAROLINA LINE	0	1.03	2	NO	NO	1.03	18	10,877	5,982		144	
TOTAL FOR MAP NO. 6										1.03		10,877	5,982		144	
2017CPT.10.15.20902.1	Union	7	VANN SNEED RD (SR 1925)	FROM PHILADELPHIA CH RD (SR 1922) TO OLD PAGELAND/MARSHVILLE RD (SR 1937)	0	1.50	2	NO	NO	1.5	18	15,840	8,712		144	
TOTAL FOR MAP NO. 7										1.5		15,840	8,712		144	
2017CPT.10.15.20902.1	Union	8	EDWARDS RD (SR 1943)	FROM SNYDER STORE RD (SR 1945) TO WHITE STORE RD (SR 1003)	0	2.15	2	NO	NO	2.15	18	22,704	12,487		118	
TOTAL FOR MAP NO. 8										2.15		22,704	12,487		118	
2017CPT.10.15.20902.1	Union	9	EXCELL HINSON RD (SR 1944)	FROM SNYDER STORE RD (SR 1945) TO OLD PAGELAND/MARSHVILLE RD (SR 1941)	0	0.70	2	NO	NO	0.7	18	7,392	4,066		112	
TOTAL FOR MAP NO. 9										0.7		7,392	4,066		112	
2017CPT.10.15.20902.1	Union	10	ROCK REST RD (SR 1946)	FROM SNYDER STORE RD (SR 1945) TO NASH RD (SR 1955)	1.20	1.96	2	NO	NO	0.76	18	8,026	4,414		112	
TOTAL FOR MAP NO. 10										0.76		8,026	4,414		112	
2017CPT.10.15.20902.1	Union	11	RUSSELL POPE RD (SR 1948)	FROM FAULKS CH RD (SR 1947) TO OLD PAGELAND/MARSHVILLE RD (SR 1937)	0	1.39	2	NO	NO	1.39	16	13,047	7,176		112	
TOTAL FOR MAP NO. 11										1.39		13,047	7,176		112	
2017CPT.10.15.20902.1	Union	12	CARL FUNDERBURK RD (SR 1950)	FROM OLD PAGELAND/MONROE RD (SR 1941) TO US 601	0	0.84	2	NO	NO	0.84	18	8,870	4,879		144	
TOTAL FOR MAP NO. 12										0.84		8,870	4,879		144	
2017CPT.10.15.20902.1	Union	13	WALKERS GROVE RD (SR 1969)	FROM SUMMERLIN DIARY RD (SR 1962) TO THE DEAD END	0	0.51	2	NO	NO	0.51	19	5,685	3,127		56	
TOTAL FOR MAP NO. 13										0.51		5,685	3,127		56	
2017CPT.10.15.20902.1	Union	14	GRIFFEN CEMETERY RD (SR 1971)	FROM US 601 TO JOE GRIFFIN RD (SR 1945)	0	0.62	2	NO	NO	0.62	20	7,275	4,001		144	
TOTAL FOR MAP NO. 14										0.62		7,275	4,001		144	
2017CPT.10.15.20902.1	Union	15	JJ AUTRY RD (SR 1973)	FROM LANDSFORD RD (SR 1005) TO THE DEAD END	0	1.06	2	NO	NO	1.06	18	11,194	6,157		56	
TOTAL FOR MAP NO. 15										1.06		11,194	6,157		56	
2017CPT.10.15.20902.1	Union	16	LONNIE D ALDRIDGE RD (SR 1975)	FROM OLD PAGELAND/MARSHVILLE RD (SR 1937) TO THE DEAD END	0	0.25	2	NO	NO	0.25	19	2,787	1,533		56	
TOTAL FOR MAP NO. 16										0.25		2,787	1,533		56	
2017CPT.10.15.20902.1	Union	17	J FRANK MOSER RD (SR 1988)	FROM OLD PAGELAND/MONROE RD (SR 1941) TO THE DEAD END	0	0.66	2	NO	NO	0.66	20	7,744	4,259		56	
TOTAL FOR MAP NO. 17										0.66		7,744	4,259		56	
TOTAL FOR PROJ NO. 2017CPT.10.15.20902.1										20.34		217,525	119,639	20.00	1,860	1
GRAND TOTAL										20.34		217,525	119,639	20.00	1,860	1



Union County
2018 AST



SIGNING FOR ASPHALT SURFACE TREATMENT



LEGEND	
	STATIONARY SIGN
←	DIRECTION OF TRAFFIC FLOW

MAINLINE (-L-) SIGNING

-Y- LINE SIGNING

SIGNING NOTES AND PLACEMENT PER DIRECTION	1	 <small>W20-1 48" X 48"</small>	<p>PLACE 1000' PRIOR TO BEGINNING OF CONSTRUCTION LIMITS. ONLY USED ON -Y- LINES IF RESURFACING LIMITS EXTEND 1000' ALONG -Y- LINE.</p> <p>#2 SIGN ONLY USED WHEN RESURFACING LIMITS ARE 2 OR MORE MILES IN LENGTH. ROUND UP TO NEXT WHOLE NUMBER. (NO FRACTIONAL OR DECIMAL NUMBERS)</p>
	2	 <small>W7-30P 24" X 18"</small>	
	3	 <small>W8-7 48" X 48"</small> <small>SP 48" X 48"</small>	<p>ALTERNATE THE FOLLOWING TWO SIGNS:</p> <p>STARTING WITH "LOOSE GRAVEL" (W8-7) FOLLOWED BY "UNMARKED PAVEMENT".</p> <p>PLACE INITIALLY AT THE CONSTRUCTION LIMITS AND SPACED 1 MILE APART THEREAFTER. IF NO -Y- LINES EXIST, PLACE 2ND SET 1/2 MILE FROM THE CONSTRUCTION LIMITS AND THEN SPACE 1 MILE THEREAFTER.</p>
	4	 <small>SP 13106 48" X 48"</small>	<p>THESE ARE FOR -Y- LINES THAT ARE "THROUGH" ROADWAYS. DEAD END AND SUBDIVISION ROADS ARE NOT "THROUGH" ROADWAYS. INSTALL 500' +/- FROM EACH -Y- LINE APPROACH AS SHOWN ABOVE. FOR MULTIPLE -Y- LINES THAT ARE SEPARATED BY 0.25 MILES OR LESS, TREAT AS A SINGLE UNIT AND INSTALL WITHIN 500' OF EACH APPROACH. A MAXIMUM OF 2 SIGN SETS PER MILE. DO NOT INSTALL WHEN -Y- LINES ARE WITHIN 0.5 MILES FROM "END ROAD WORK" SIGN.</p>
	5	 <small>G20-2 A 48" X 24"</small>	<p>PLACE 500' FOLLOWING THE END OF CONSTRUCTION LIMITS.</p>

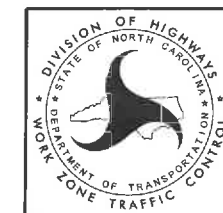
NO REQUIRED STATIONARY SIGNING FOR THE FOLLOWING -Y- LINE CONDITIONS:

- 1) LESS THAN 1000' OF RESURFACING ALONG -Y- LINE
- 2) SUBDIVISION ROADS
- 3) DEAD END ROADS

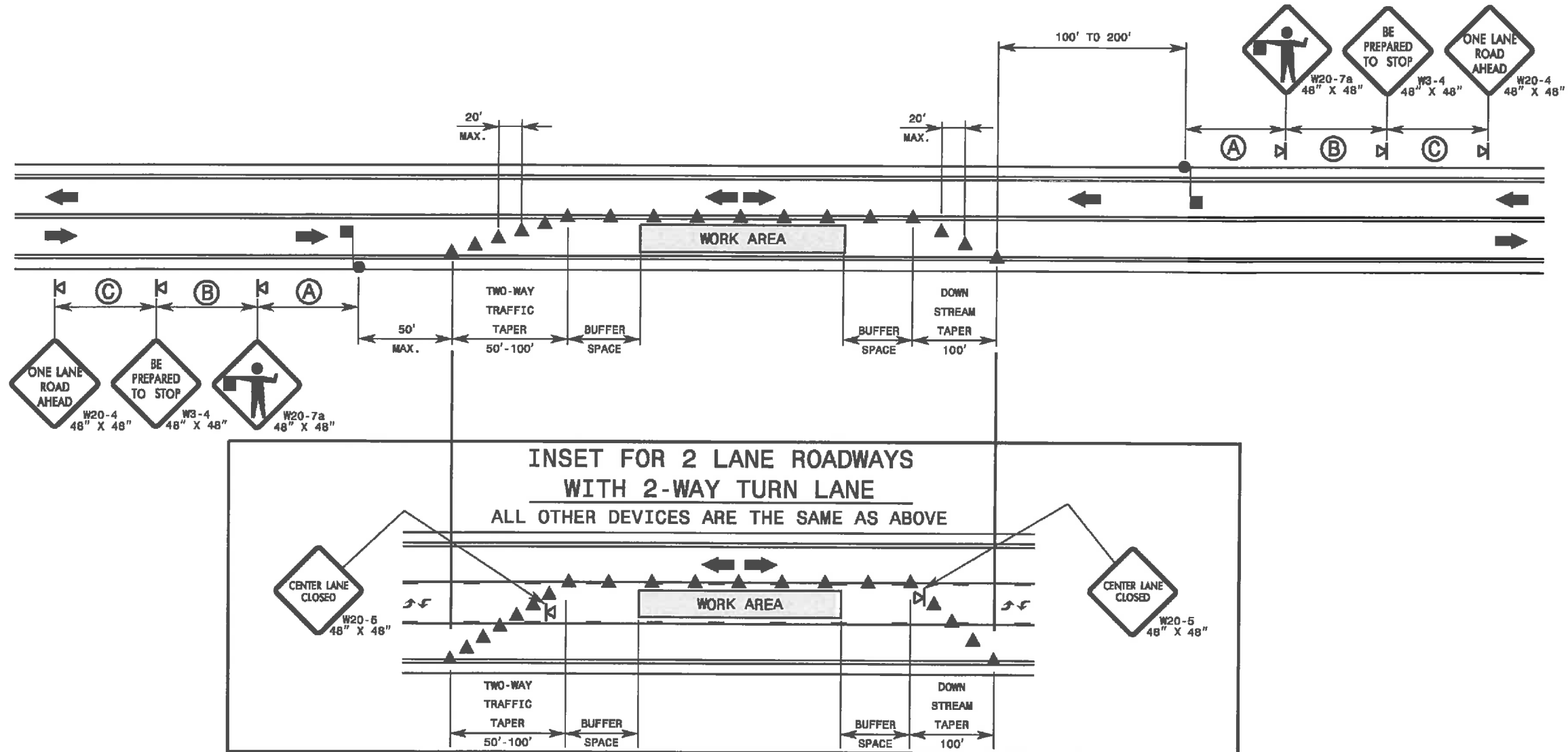
WHEN PAVING/CONSTRUCTION ACTIVITIES PROCEED ACROSS AN UNSIGNED -Y- LINE, ADVANCE WARNING PORTABLE SIGNS SHALL BE USED ALONG THE -Y- LINE AS SHOWN BELOW. REMOVE UPON COMPLETION OF WORK.



PLACED 500' IN ADVANCE OF FLAGGER. PLACED 250' IN ADVANCE OF FLAGGER.



ADVANCE WARNING SIGNS
FOR
ASPHALT SURFACE TREATMENTS
2 LANE ROADWAYS



GENERAL NOTES FOR FLAGGER OPERATIONS

- 1- REFER TO STD. 1101.11 SHEET 4 FOR SIGN SPACING.
- 2- INSTALL LANE CLOSURES WITH THE TRAFFIC FLOW, BEGINNING WITH DEVICES ON THE UPSTREAM SIDE OF TRAFFIC.
- 3- REMOVE LANE CLOSURES AGAINST THE TRAFFIC FLOW, BEGINNING WITH DEVICES ON THE DOWNSTREAM SIDE OF TRAFFIC.
- 4- PLACE CONES THRU THE WORK AREA AT THE MAXIMUM SPACING EQUAL IN FEET TO 2 TIMES THE POSTED SPEED LIMIT.
- 5- EXTEND LANE CLOSURES AT THE BUFFER SPACE SUCH THAT STOPPING SIGHT DISTANCE IS PROVIDED TO THE FLAGGER (REFER TO STD. 1101.11 SHEET 2).
- 6- DO NOT STOP TRAFFIC IN ANY ONE DIRECTION FOR MORE THAN 5 MINUTES AT A TIME.
- 7- DRUMS OR SKINNY-DRUMS MAY BE USED IN LIEU OF CONES. REFER TO ROADWAY STANDARD DRAWING 1180.01 FOR SKINNY-DRUM REQUIREMENTS.
- 8- USE FLAGGERS TO CONTROL TRAFFIC AT INTERSECTIONS AFFECTED BY THE LANE CLOSURE. SUPPLEMENT FLAGGERS LOCATED AT INTERSECTIONS WITH FLAGGER AHEAD SIGNS (W20-7a) PLACED APPROXIMATELY 250 FT. IN ADVANCE OF THE FLAGGER. FOR SIGNALIZED INTERSECTIONS PLACE SIGNALS IN THE FLASH MODE AND RECOMMEND THE USE OF LAW ENFORCEMENT.
- 9- REFER TO 2009 MUTCD, CHAPTER 6, FOR FLAGGER CONTROL, REQUIREMENTS, AND PROCEDURES.
- 10- DO NOT EXCEED A 1 MILE LANE CLOSURE LENGTH UNLESS OTHERWISE SHOWN IN THE TMP OR AS DIRECTED BY THE ENGINEER.

GENERAL NOTES FOR PILOT CAR OPERATIONS

- 1- USE PILOT CARS WHEN DIRECTED BY THE ENGINEER.
- 2- IF ROADWAY WIDTH IS LESS THAN 22 FEET (EOP TO EOP), CONES MAY NOT BE REQUIRED ALONG WORK AREA, AND AT THE DISCRETION OF THE ENGINEER, CONES MAY BE OMITTED ALONG THE WORK AREA IF USING A PILOT CAR.
- 3- CONES ARE ALWAYS REQUIRED IN THE UPSTREAM AND DOWNSTREAM TAPERS.
- 4- MOUNT SIGN G20-4 "PILOT CAR FOLLOW ME" AT A CONSPICUOUS POSITION ON THE REAR OF THE PILOT VEHICLE.
- 5- DO NOT INSTALL MORE THAN ONE (1) MILE OF LANE CLOSURE, MEASURED FROM THE BEGINNING OF THE MERGE TAPER TO THE END OF THE LANE CLOSURE.
- 6- ADVISE RESIDENTS AND BUSINESSES WITHIN THE LANE CLOSURE LIMITS ABOUT METHODS OF SAFE EGRESS AND INGRESS FROM DRIVEWAYS DURING FLAGGING AND PILOT CAR OPERATIONS.

LEGEND

- FLAGGER
- CONE
- PORTABLE SIGN
- DIRECTION OF TRAFFIC FLOW