

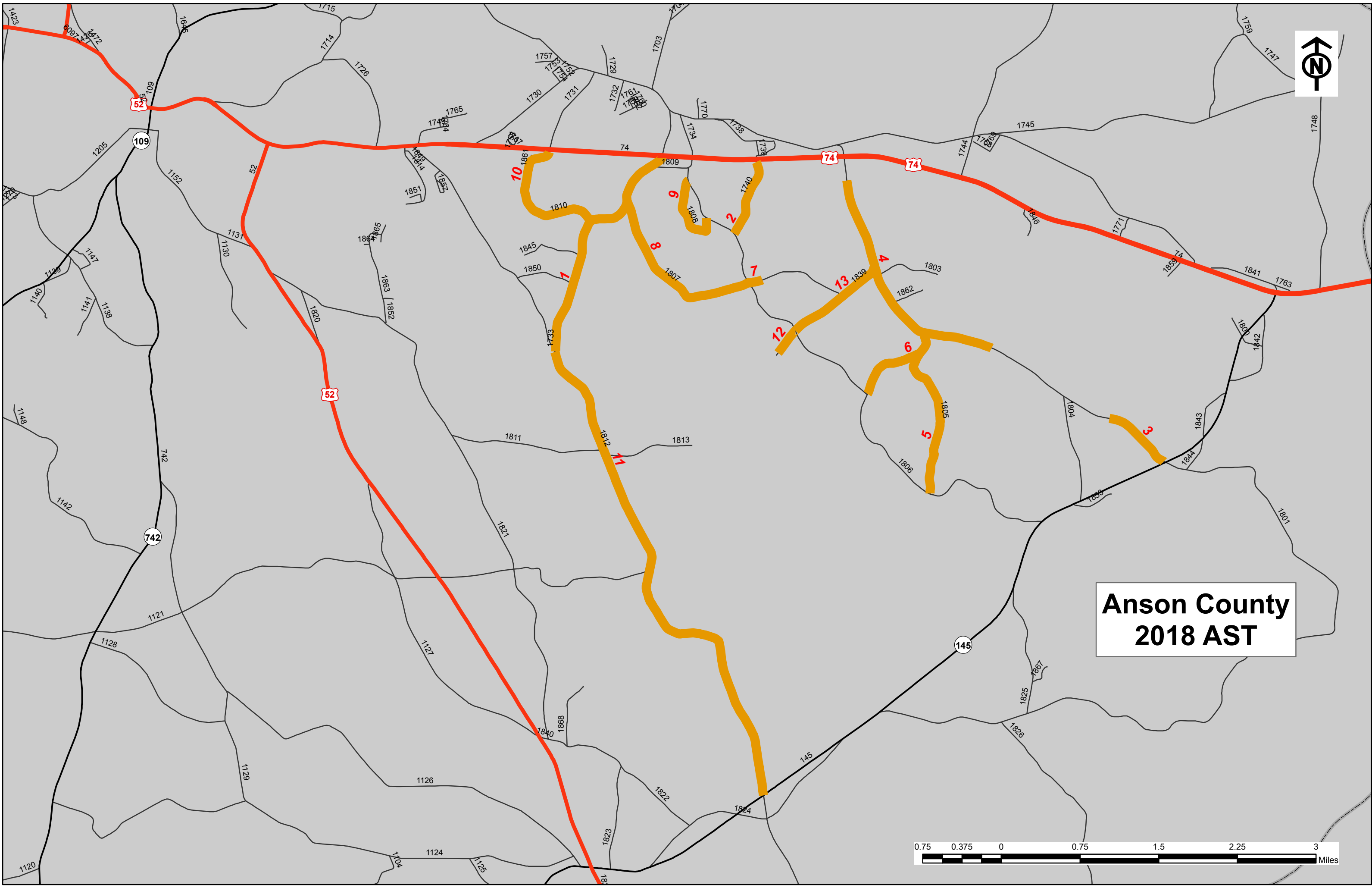
PROJECT NO.	SHEET NO.	TOTAL NO.
2017CPT.10.12.20042.1	1	4

SUMMARY OF QUANTITIES

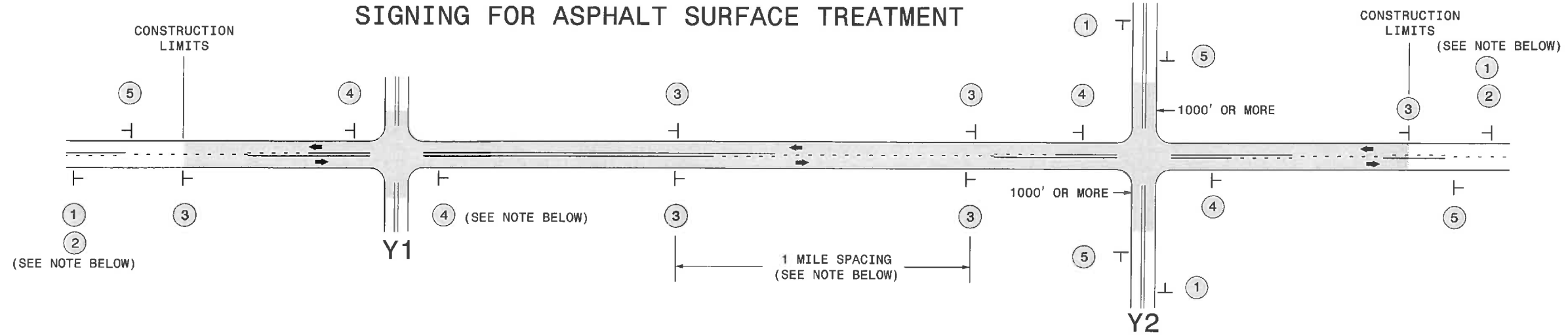
PROJECT NO	COUNTY	MAP NO	ROUTE	DESCRIPTION	BEGIN MP	END MP	LANES	FINAL SURFACE TESTING REQUIRED	WARM MIX ASPHALT REQUIRED	LENGTH MI	WIDTH FT	ASPHALT SURFACE TREATMENT, DOUBLE SEAL SY	EMULSION FOR ASPHALT SURFACE TREATMENT GAL	BLOTTING SAND TON	WORK ZONE ADVANCE/GENERAL WARNING SIGNING SF	TEMPORARY TRAFFIC CONTROL LS
2017CPT.10.12.20042.1	Anson	1	PARSON GROVE CH RD (SR 1733)	FROM US 74 TO DIGGS RD (SR 1812)	0.47	2.77	2	NO	NO	2.3	18	24,288	13,358		182	
TOTAL FOR MAP NO. 1										2.3		24,288	13,358		182	
2017CPT.10.12.20042.1	Anson	2	APPLE ORCHARD RD (SR 1740)	FROM US 74 TO GROVER BENNETT RD (SR 1734)	0.32	1.07	2	NO	NO	0.75	20	8,800	4,840		112	
TOTAL FOR MAP NO. 2										0.75		8,800	4,840		112	
2017CPT.10.12.20042.1	Anson	3	HAILEY FERRY RD (SR 1801)	FROM NC 145 TO THE EXISTING PAVEMENT JOINT	6.30	6.98	2	NO	NO	0.68	18	7,181	3,950		112	
TOTAL FOR MAP NO. 3										0.68		7,181	3,950		112	
2017CPT.10.12.20042.1	Anson	4	HAILEY FERRY RD (SR 1801)	FROM THE PAVEMENT JOINT AT THE SAND PIT TO THE RAILROAD CROSSING	8.30	10.64	2	NO	NO	2.34	18	24,710	13,591		118	
TOTAL FOR MAP NO. 4										2.34		24,710	13,591		118	
2017CPT.10.12.20042.1	Anson	5	ATKINSON RD (SR 1805)	FROM BLUE WATER RD (SR 1806) TO BLUE WATER RD (SR 1806)	0.00	1.46	2	NO	NO	1.46	18	15,418	8,480		56	
TOTAL FOR MAP NO. 5										1.46		15,418	8,480		56	
2017CPT.10.12.20042.1	Anson	6	BLUE WATER RD (SR 1806)	FROM GROVER BENNETT RD (SR 1734) TO HAILEY FERRY RD (SR 1801)	0.00	0.91	2	NO	NO	0.91	18	9,610	5,286		56	
TOTAL FOR MAP NO. 6										0.91		9,610	5,286		56	
2017CPT.10.12.20042.1	Anson	7	KNOTTS RD (SR 1807)	FROM GROVER BENNETT RD (SR 1734) TO THE END OF MAINTENANCE	0.98	0.85	2	NO	NO	0.13	20	1,525	839		56	
TOTAL FOR MAP NO. 7										0.13		1,525	839		56	
2017CPT.10.12.20042.1	Anson	8	KNOTTS RD (SR 1807)	FROM GROVER BENNETT (SR 1734) TO PARSON GROVE CH RD (SR 1733)	0.98	2.70	2	NO	NO	1.72	17	17,154	9,435		112	
TOTAL FOR MAP NO. 8										1.72		17,154	9,435		112	
2017CPT.10.12.20042.1	Anson	9	INGRAM RD (SR 1808)	FROM GROVER BENNETT RD (SR 1734) TO GROVER BENNETT RD (SR 1734)	0.00	0.75	2	NO	NO	0.75	20	8,800	4,840		112	
TOTAL FOR MAP NO. 9										0.75		8,800	4,840		112	
2017CPT.10.12.20042.1	Anson	10	HARRINGTON RD (SR 1810)	FROM PARSON GROVE CH RD (SR 1733) TO US 74	0.00	1.32	2	NO	NO	1.32	17	13,165	7,241		112	
TOTAL FOR MAP NO. 10										1.32		13,165	7,241		112	
2017CPT.10.12.20042.1	Anson	11	DIGGS RD (SR 1812)	FROM PARSON GROVE CH RD (SR 1733) TO NC 145	2.44	7.45	2	NO	NO	5.01	19	55,845	30,715		246	
TOTAL FOR MAP NO. 11										5.01		55,845	30,715		246	
2017CPT.10.12.20042.1	Anson	12	USREY RD (SR 1839)	FROM GROVER BENNET RD (SR 1734) TO THE DEAD END	0.98	1.25	2	NO	NO	0.27	21	3,326	1,829		56	
TOTAL FOR MAP NO. 12										0.27		3,326	1,829		56	
2017CPT.10.12.20042.1	Anson	13	USREY RD (SR 1839)	FROM HAILEY FERRY RD (SR 1801) TO GROVER BENNETT RD (SR 1734)	0.00	0.98	2	NO	NO	0.98	18	10,349	5,692		56	
TOTAL FOR MAP NO. 13										0.98		10,349	5,692		56	
TOTAL FOR PROJ NO. 2017CPT.10.12.20042.1										18.62		200,171	110,096	20.00	1,386	1
GRAND TOTAL										18.62		200,171	110,096	20.00	1,386	1



**Anson County
2018 AST**



SIGNING FOR ASPHALT SURFACE TREATMENT



LEGEND	
	STATIONARY SIGN
←	DIRECTION OF TRAFFIC FLOW

MAINLINE (-L-) SIGNING

-Y- LINE SIGNING

SIGNING NOTES AND PLACEMENT PER DIRECTION	1	 <small>W20-1 48" X 48"</small>	<p>PLACE 1000' PRIOR TO BEGINNING OF CONSTRUCTION LIMITS. ONLY USED ON -Y- LINES IF RESURFACING LIMITS EXTEND 1000' ALONG -Y- LINE.</p> <p>#2 SIGN ONLY USED WHEN RESURFACING LIMITS ARE 2 OR MORE MILES IN LENGTH. ROUND UP TO NEXT WHOLE NUMBER. (NO FRACTIONAL OR DECIMAL NUMBERS)</p>
	2	 <small>W7-30P 24" X 18"</small>	
	3	 <small>W8-7 48" X 48"</small> <small>SP 48" X 48"</small>	<p>ALTERNATE THE FOLLOWING TWO SIGNS:</p> <p>STARTING WITH "LOOSE GRAVEL" (W8-7) FOLLOWED BY "UNMARKED PAVEMENT".</p> <p>PLACE INITIALLY AT THE CONSTRUCTION LIMITS AND SPACED 1 MILE APART THEREAFTER. IF NO -Y- LINES EXIST, PLACE 2ND SET 1/2 MILE FROM THE CONSTRUCTION LIMITS AND THEN SPACE 1 MILE THEREAFTER.</p>
	4	 <small>SP 13106 48" X 48"</small>	<p>THESE ARE FOR -Y- LINES THAT ARE "THROUGH" ROADWAYS. DEAD END AND SUBDIVISION ROADS ARE NOT "THROUGH" ROADWAYS. INSTALL 500' +/- FROM EACH -Y- LINE APPROACH AS SHOWN ABOVE. FOR MULTIPLE -Y- LINES THAT ARE SEPARATED BY 0.25 MILES OR LESS, TREAT AS A SINGLE UNIT AND INSTALL WITHIN 500' OF EACH APPROACH. A MAXIMUM OF 2 SIGN SETS PER MILE. DO NOT INSTALL WHEN -Y- LINES ARE WITHIN 0.5 MILES FROM "END ROAD WORK" SIGN.</p>
	5	 <small>G20-2 A 48" X 24"</small>	<p>PLACE 500' FOLLOWING THE END OF CONSTRUCTION LIMITS.</p>

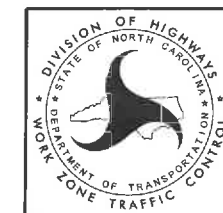
NO REQUIRED STATIONARY SIGNING FOR THE FOLLOWING -Y- LINE CONDITIONS:

- 1) LESS THAN 1000' OF RESURFACING ALONG -Y- LINE
- 2) SUBDIVISION ROADS
- 3) DEAD END ROADS

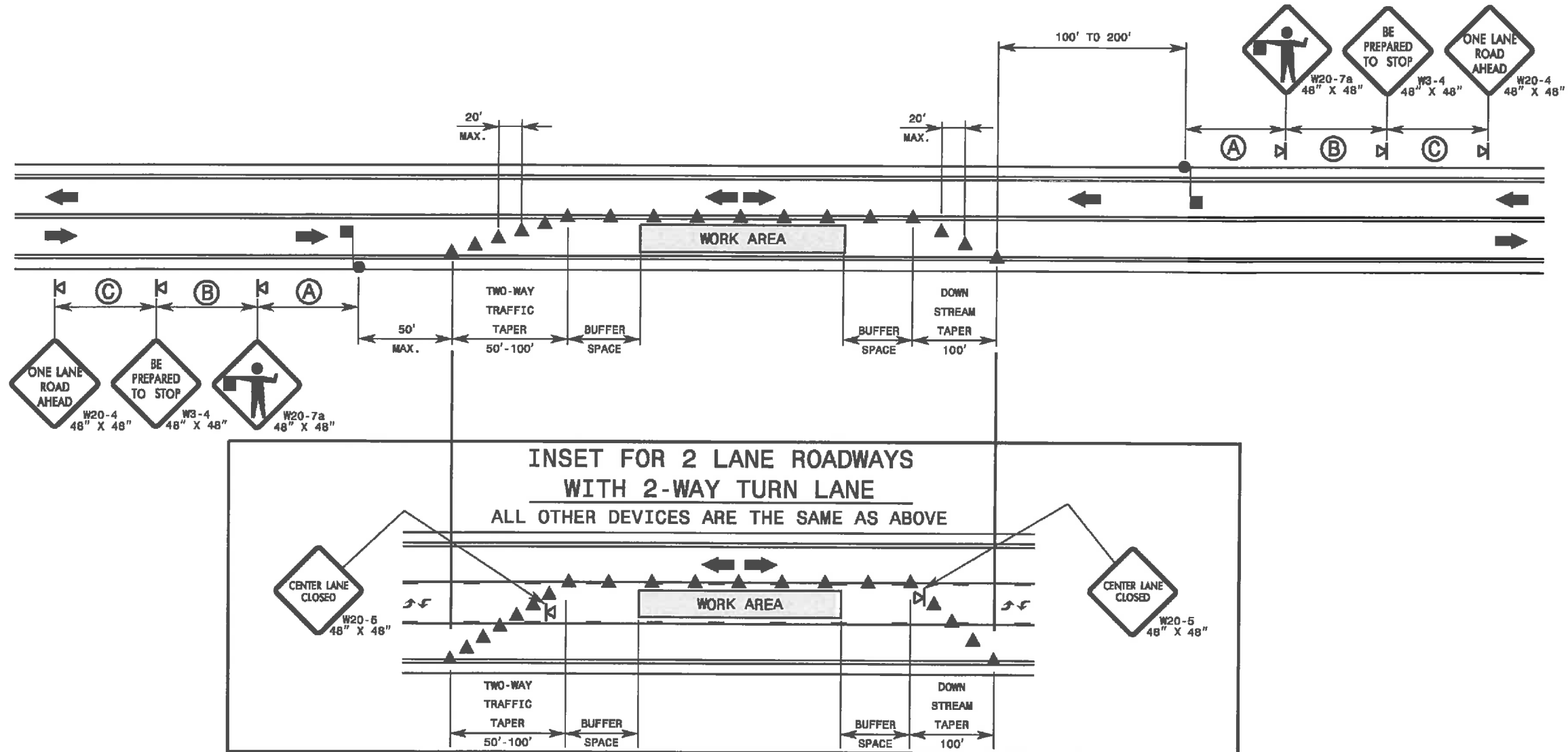
WHEN PAVING/CONSTRUCTION ACTIVITIES PROCEED ACROSS AN UNSIGNED -Y- LINE, ADVANCE WARNING PORTABLE SIGNS SHALL BE USED ALONG THE -Y- LINE AS SHOWN BELOW. REMOVE UPON COMPLETION OF WORK.



PLACED 500' IN ADVANCE OF FLAGGER. PLACED 250' IN ADVANCE OF FLAGGER.



ADVANCE WARNING SIGNS
FOR
ASPHALT SURFACE TREATMENTS
2 LANE ROADWAYS



GENERAL NOTES FOR FLAGGER OPERATIONS

- 1- REFER TO STD. 1101.11 SHEET 4 FOR SIGN SPACING.
- 2- INSTALL LANE CLOSURES WITH THE TRAFFIC FLOW, BEGINNING WITH DEVICES ON THE UPSTREAM SIDE OF TRAFFIC.
- 3- REMOVE LANE CLOSURES AGAINST THE TRAFFIC FLOW, BEGINNING WITH DEVICES ON THE DOWNSTREAM SIDE OF TRAFFIC.
- 4- PLACE CONES THRU THE WORK AREA AT THE MAXIMUM SPACING EQUAL IN FEET TO 2 TIMES THE POSTED SPEED LIMIT.
- 5- EXTEND LANE CLOSURES AT THE BUFFER SPACE SUCH THAT STOPPING SIGHT DISTANCE IS PROVIDED TO THE FLAGGER (REFER TO STD. 1101.11 SHEET 2).
- 6- DO NOT STOP TRAFFIC IN ANY ONE DIRECTION FOR MORE THAN 5 MINUTES AT A TIME.
- 7- DRUMS OR SKINNY-DRUMS MAY BE USED IN LIEU OF CONES. REFER TO ROADWAY STANDARD DRAWING 1180.01 FOR SKINNY-DRUM REQUIREMENTS.
- 8- USE FLAGGERS TO CONTROL TRAFFIC AT INTERSECTIONS AFFECTED BY THE LANE CLOSURE. SUPPLEMENT FLAGGERS LOCATED AT INTERSECTIONS WITH FLAGGER AHEAD SIGNS (W20-7a) PLACED APPROXIMATELY 250 FT. IN ADVANCE OF THE FLAGGER. FOR SIGNALIZED INTERSECTIONS PLACE SIGNALS IN THE FLASH MODE AND RECOMMEND THE USE OF LAW ENFORCEMENT.
- 9- REFER TO 2009 MUTCD, CHAPTER 6, FOR FLAGGER CONTROL, REQUIREMENTS, AND PROCEDURES.
- 10- DO NOT EXCEED A 1 MILE LANE CLOSURE LENGTH UNLESS OTHERWISE SHOWN IN THE TMP OR AS DIRECTED BY THE ENGINEER.

GENERAL NOTES FOR PILOT CAR OPERATIONS

- 1- USE PILOT CARS WHEN DIRECTED BY THE ENGINEER.
- 2- IF ROADWAY WIDTH IS LESS THAN 22 FEET (EOP TO EOP), CONES MAY NOT BE REQUIRED ALONG WORK AREA, AND AT THE DISCRETION OF THE ENGINEER, CONES MAY BE OMITTED ALONG THE WORK AREA IF USING A PILOT CAR.
- 3- CONES ARE ALWAYS REQUIRED IN THE UPSTREAM AND DOWNSTREAM TAPERS.
- 4- MOUNT SIGN G20-4 "PILOT CAR FOLLOW ME" AT A CONSPICUOUS POSITION ON THE REAR OF THE PILOT VEHICLE.
- 5- DO NOT INSTALL MORE THAN ONE (1) MILE OF LANE CLOSURE, MEASURED FROM THE BEGINNING OF THE MERGE TAPER TO THE END OF THE LANE CLOSURE.
- 6- ADVISE RESIDENTS AND BUSINESSES WITHIN THE LANE CLOSURE LIMITS ABOUT METHODS OF SAFE EGRESS AND INGRESS FROM DRIVEWAYS DURING FLAGGING AND PILOT CAR OPERATIONS.

LEGEND

- FLAGGER
- CONE
- PORTABLE SIGN
- DIRECTION OF TRAFFIC FLOW