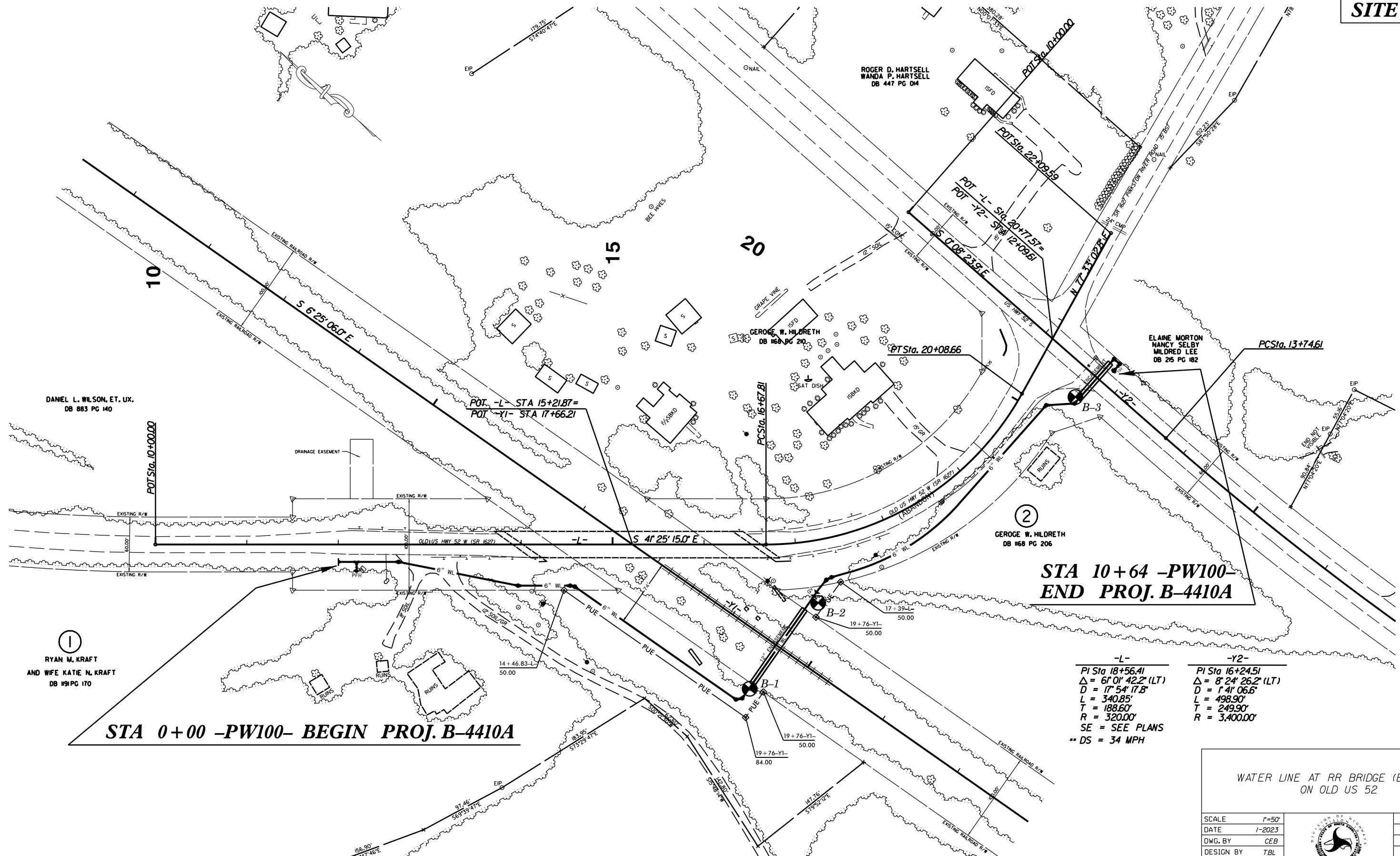


PROJECT NO.	SHEET NO.
33688.3.2	GEO-1
F.A. PROJECT NO.	
SITE PLAN	



-L-	-Y2-
PI Sta 18+56.41	PI Sta 16+24.51
$\Delta = 6' 01' 42.2''$ (LT)	$\Delta = 8' 24' 26.2''$ (LT)
D = 17' 54' 17.8"	D = 1' 41' 06.6"
L = 340.85'	L = 498.90'
T = 188.60'	T = 249.90'
R = 320.00'	R = 3,400.00'
SE = SEE PLANS	
** DS = 34 MPH	

STA 0+00 -PW100- BEGIN PROJ. B-4410A

STA 10+64 -PW100- END PROJ. B-4410A

WATER LINE AT RR BRIDGE (B-4410A)
ON OLD US 52

SCALE	r=50'		REVISIONS
DATE	1-2023		
DWG. BY	CEB		
DESIGN BY	TBL		
APPROVED	JDH		

GEOTECHNICAL BORING REPORT

BORE LOG

WBS 33688.3.2		TIP B-4410A		COUNTY ANSON		GEOLOGIST S N Patterson									
SITE DESCRIPTION Water line installation starting at US 52 going westerly along Pinkston River Road (SR 1627)							GROUND WTR (ft)								
BORING NO. B-3		STATION N/A		OFFSET N/A		ALIGNMENT N/A									
COLLAR ELEV. 319.3 ft		TOTAL DEPTH 14.6 ft		NORTHING 508,767		EASTING 1,667,252									
DRILL RIG/HAMMER EFF./DATE CG24113 CME-550X 81% 05/112021				DRILL METHOD H.S. Augers		HAMMER TYPE Automatic									
DRILLER C. Odom		START DATE 12/02/22		COMP. DATE 12/02/22		SURFACE WATER DEPTH N/A									
ELEV (ft)	DRIVE ELEV (ft)	DEPTH (ft)	BLOW COUNT			BLOWS PER FOOT					SAMP. NO.	LOG	SOIL AND ROCK DESCRIPTION	DEPTH (ft)	
			0.5ft	0.5ft	0.5ft	0	25	50	75	100					
320														GROUND SURFACE	0.0
	317.3	2.0												RESIDUAL	
	315.1	4.2	23	58	42/3									Red, brown, gray, very stiff, dry, fine sandy silt (A-4)	2.5
315														WEATHERED ROCK	
	312.4	6.9												Red-brown-gray meta-argillite	
	310.1	9.2	37	63/4											
310			100/4												
	305.1	14.2	9	56	44/2										
305			100/4											Boring Terminated at Elevation 304.7 ft in metaargillite	14.6

NCDOT BORE DOUBLE B-4410A GEO WATERLINE BL.GPJ NC_DOT.GDT 1/10/23