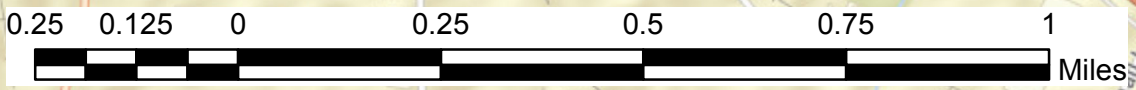


Anchor Unit Replacement Mecklenburg County Map 1

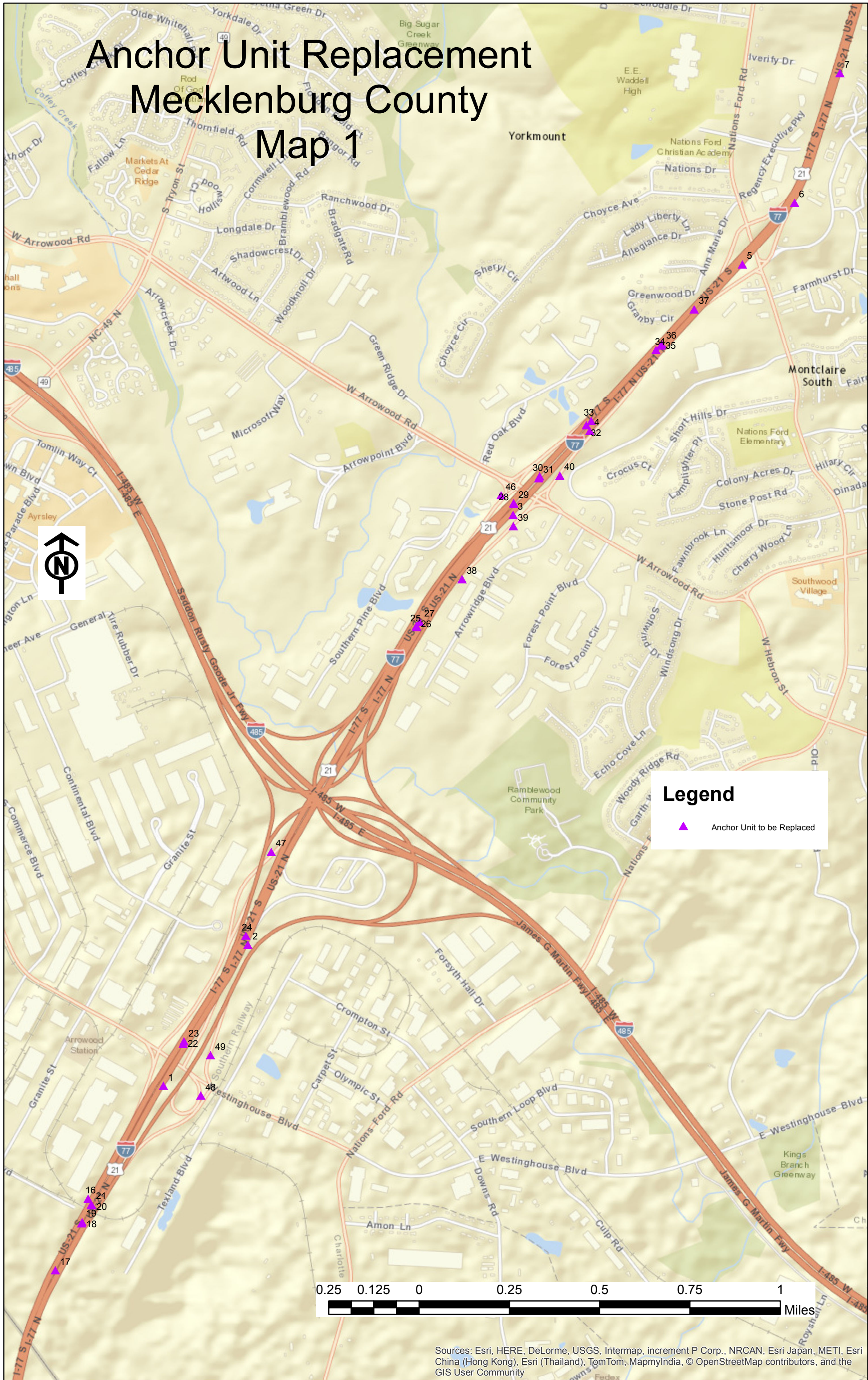


Legend

- ▲ Anchor Unit to be Replaced



Sources: Esri, HERE, DeLorme, USGS, Intermap, increment P Corp., NRCAN, Esri Japan, METI, Esri China (Hong Kong), Esri (Thailand), TomTom, MapmyIndia, © OpenStreetMap contributors, and the GIS User Community



Anchor Unit Replacement Mecklenburg County Map 2



Legend

▲ Anchor Unit to be Replaced

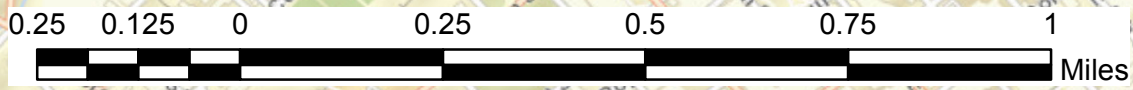


Anchor Unit Replacement Mecklenburg County Map 3

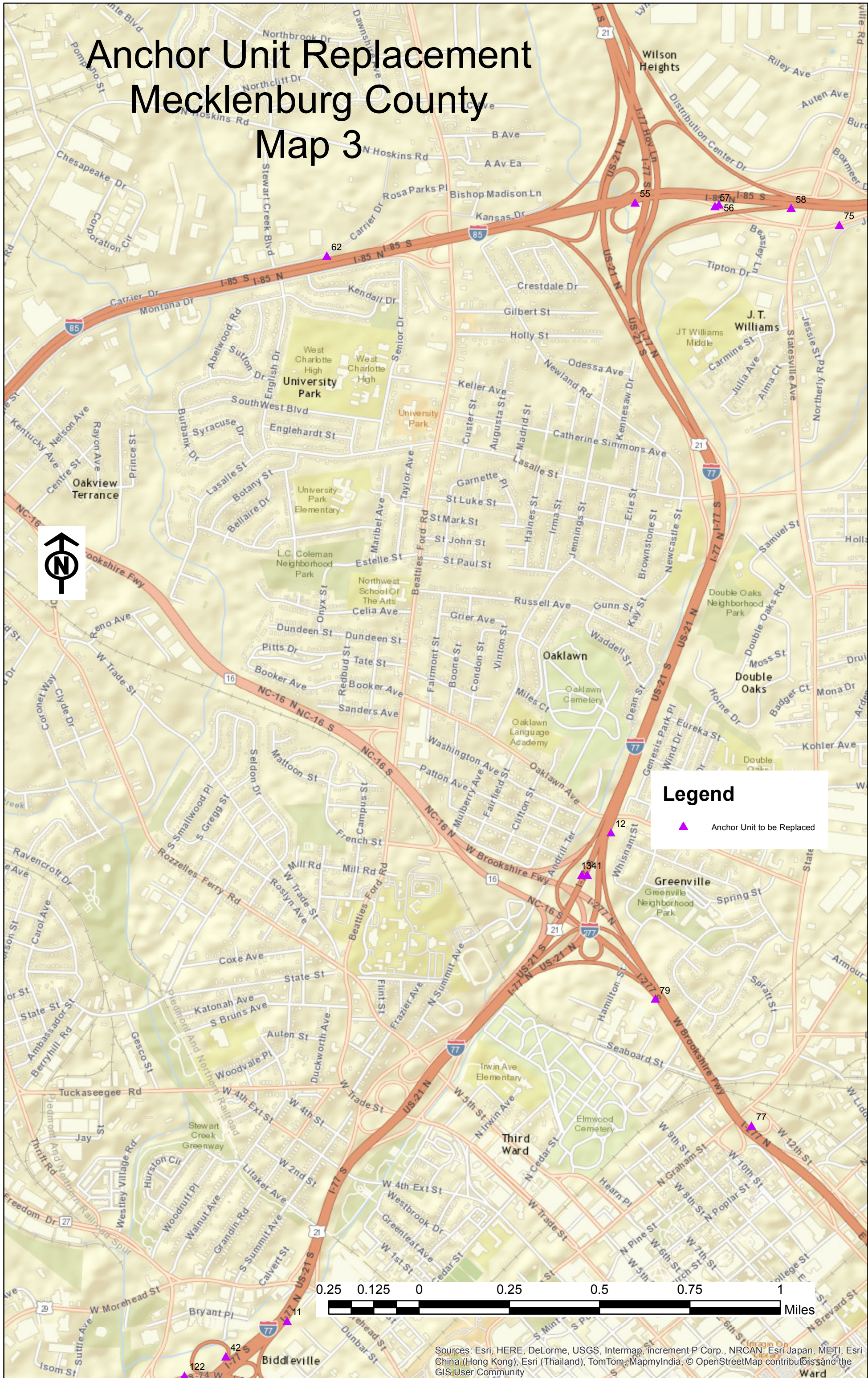


Legend

- ▲ Anchor Unit to be Replaced



Sources: Esri, HERE, DeLorme, USGS, Intermap, increment P Corp., NRCAN, Esri Japan, METI, Esri China (Hong Kong), Esri (Thailand), TomTom, MapmyIndia, © OpenStreetMap contributors, and the GIS User Community

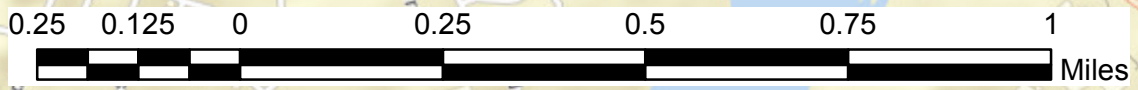


Anchor Unit Replacement Mecklenburg County Map 4



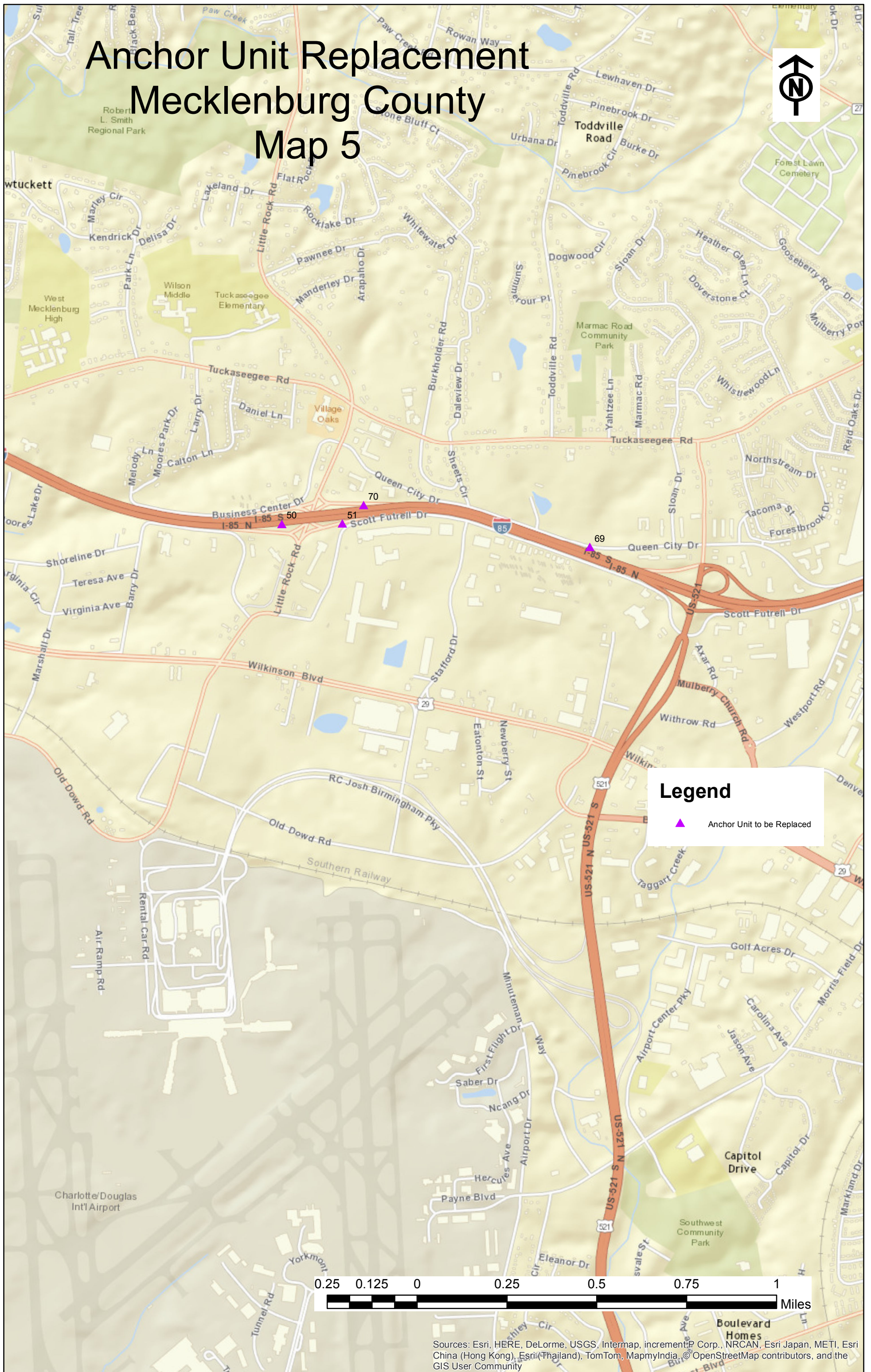
Legend

- ▲ Anchor Unit to be Replaced



Sources: Esri, HERE, DeLorme, USGS, Intermap, increment P Corp., NRCAN, Esri Japan, METI, Esri China (Hong Kong), Esri (Thailand), TomTom, MapmyIndia, © OpenStreetMap contributors, and the GIS User Community

Anchor Unit Replacement Mecklenburg County Map 5



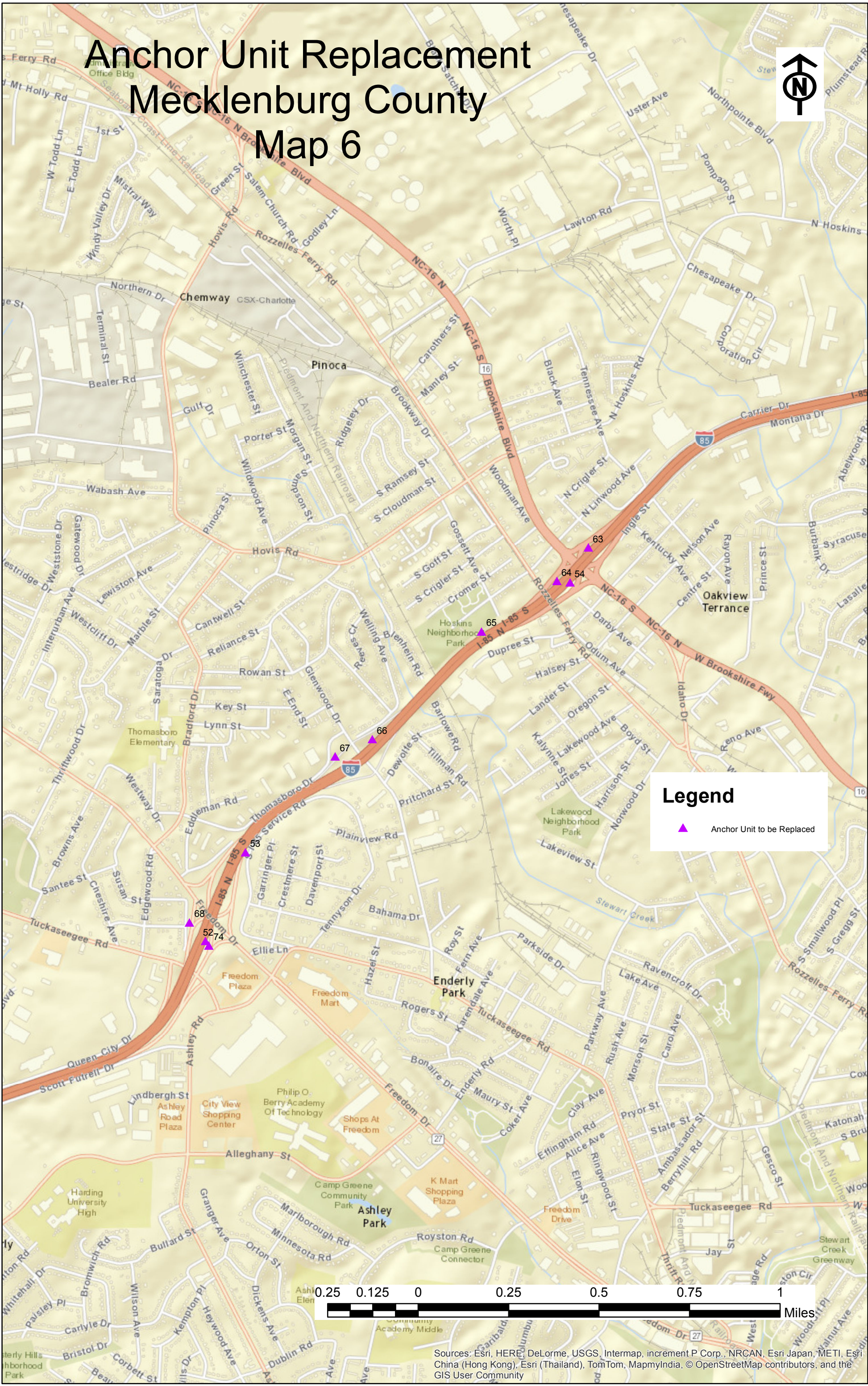
Legend

- ▲ Anchor Unit to be Replaced



Sources: Esri, HERE, DeLorme, USGS, Intermap, incrementP Corp., NRCAN, Esri Japan, METI, Esri China (Hong Kong), Esri (Thailand), TomTom, MapmyIndia, © OpenStreetMap contributors, and the GIS User Community

Anchor Unit Replacement Mecklenburg County Map 6



Legend

- ▲ Anchor Unit to be Replaced



Sources: Esri, HERE, DeLorme, USGS, Intermap, increment P Corp., NRCAN, Esri Japan, METI, Esri China (Hong Kong), Esri (Thailand), TomTom, MapmyIndia, © OpenStreetMap contributors, and the GIS User Community

Anchor Unit Replacement Mecklenburg County Map 7



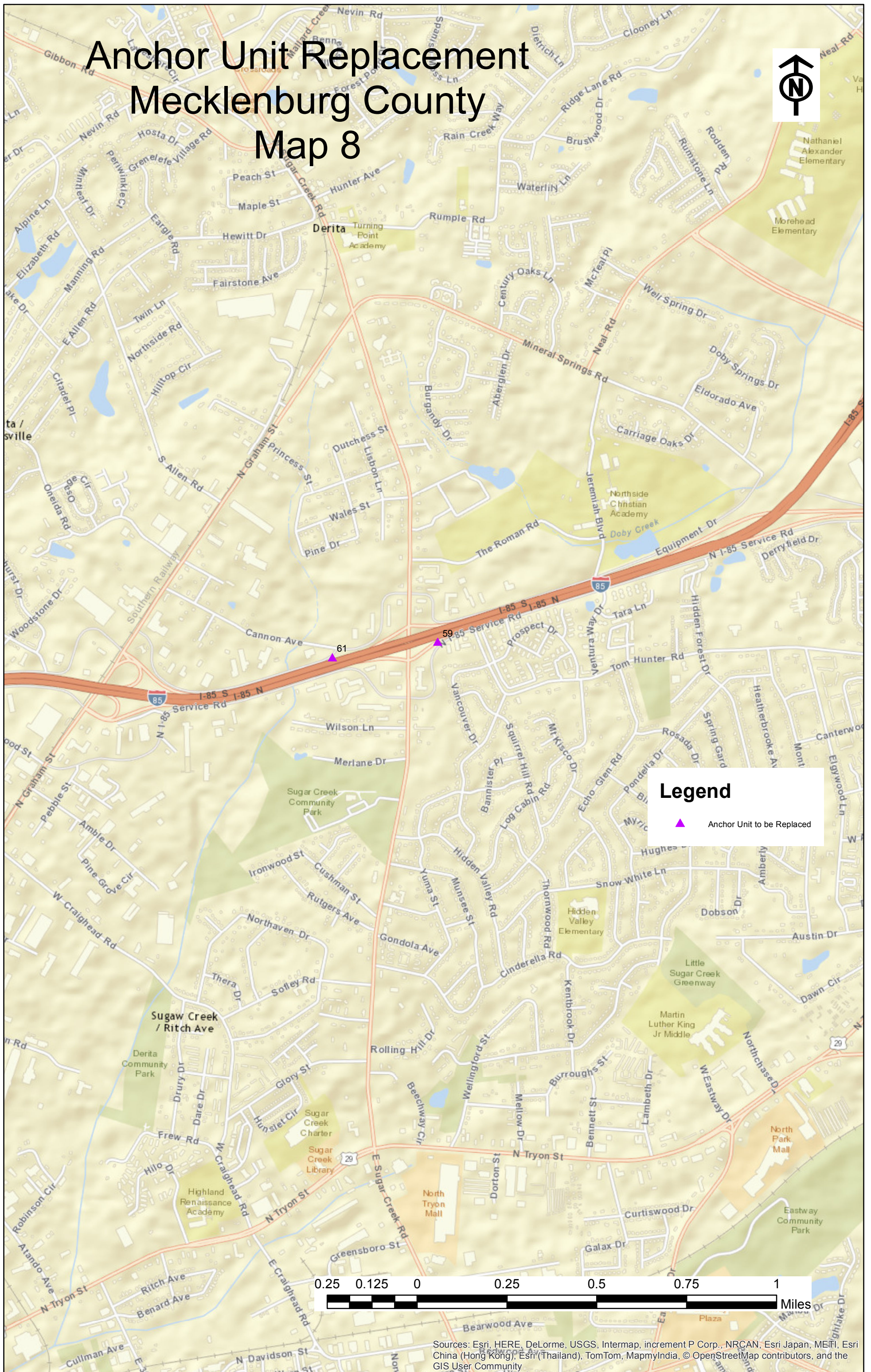
Legend

▲ Anchor Unit to be Replaced



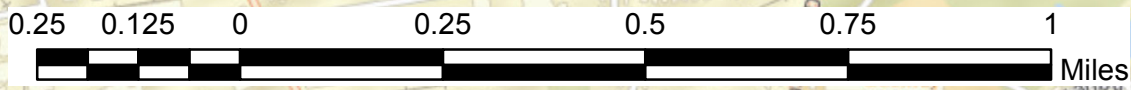
Sources: Esri, HERE, DeLorme, USGS, Intermap, increment P Corp., NRCAN, Esri Japan, METI, Esri China (Hong Kong), Esri (Thailand), TomTom, MapmyIndia, © OpenStreetMap contributors, and the GIS User Community

Anchor Unit Replacement Mecklenburg County Map 8



Legend

- ▲ Anchor Unit to be Replaced



Sources: Esri, HERE, DeLorme, USGS, Intermap, increment P Corp., NRCAN, Esri Japan, METI, Esri China (Hong Kong), Esri (Thailand), TomTom, MapmyIndia, © OpenStreetMap contributors, and the GIS User Community

Anchor Unit Replacement Mecklenburg County Map 9



Legend

▲ Anchor Unit to be Replaced



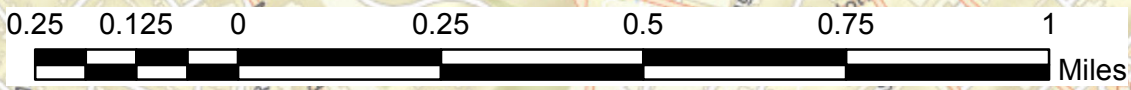
Sources: Esri, HERE, DeLorme, USGS, Intermap, increment P Corp., NRCAN, Esri Japan, METI, Esri China (Hong Kong), Esri (Thailand), TomTom, MapmyIndia, © OpenStreetMap contributors, and the GIS User Community.

Anchor Unit Replacement Mecklenburg County Map 10



Legend

- ▲ Anchor Unit to be Replaced



Sources: Esri, HERE, DeLorme, USGS, Intermap, increment P Corp., NRCAN, Esri Japan, METI, Esri China (Hong Kong), Esri (Thailand), TomTom, MapmyIndia, © OpenStreetMap contributors, and the GIS User Community

Anchor Unit Replacement Stanly County Map 11



Legend

- ▲ Anchor Unit to be Replaced



Sources: Esri, HERE, DeLorme, USGS, Intermap, increment P Corp., NRCAN, Esri Japan, METI, Esri China (Hong Kong), Esri (Thailand), TomTom, MapmyIndia, © OpenStreetMap contributors, and the GIS User Community

Anchor Unit Replacement Stanly County Map 12



Legend

- ▲ Anchor Unit to be Replaced



Sources: Esri, HERE, DeLorme, USGS, Intermap, increment P Corp., NRCAN, Esri Japan, METI, Esri China (Hong Kong), Esri (Thailand), TomTom, MapmyIndia, © OpenStreetMap contributors, and the GIS User Community