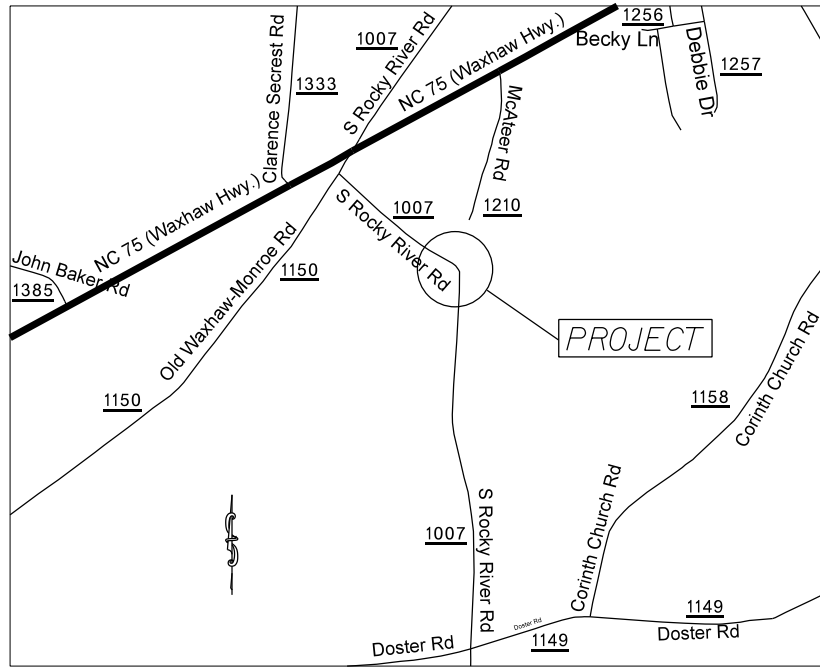


PROJECT: 50138.3.130 TIP: W-5601EA

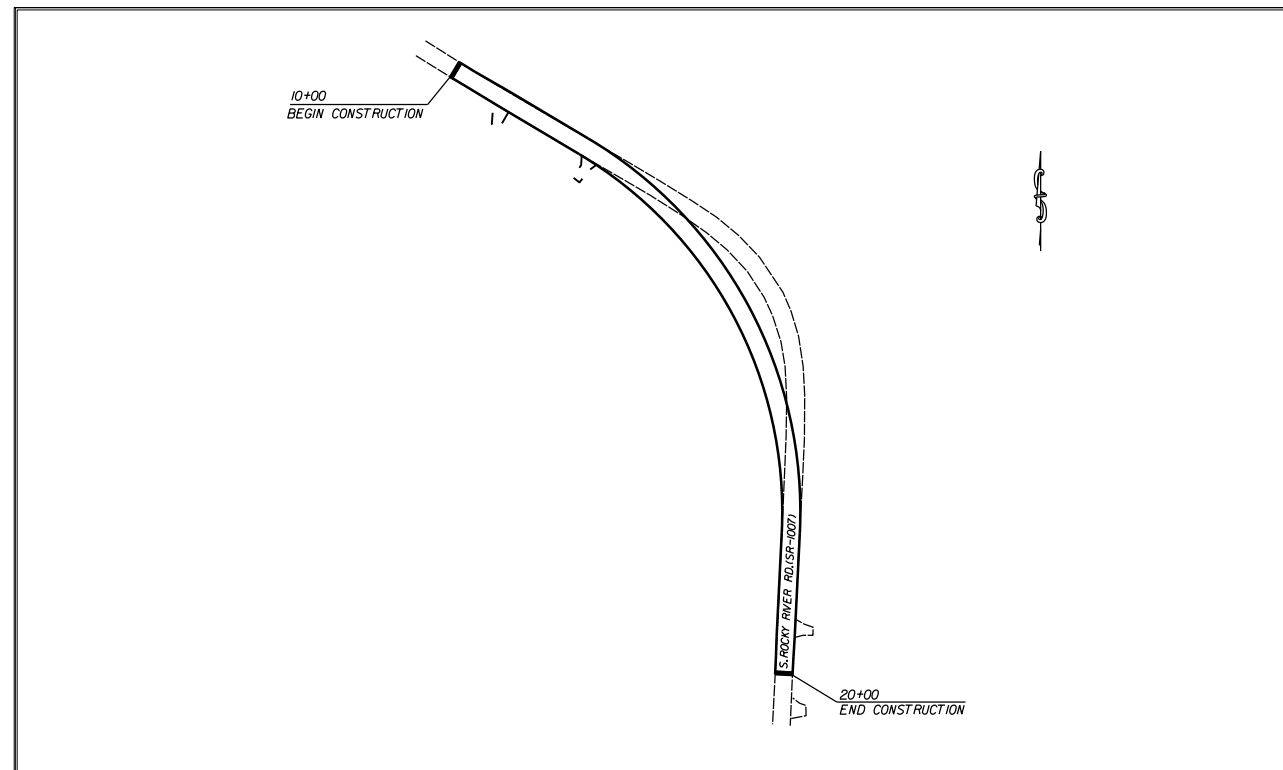


VICINITY MAP NOT TO SCALE

STATE OF NORTH CAROLINA
DIVISION OF HIGHWAYS
UNION COUNTY

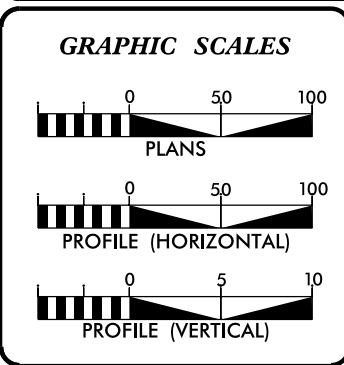
LOCATION: S. ROCKY RIVER ROAD (SR-1007), 0.28 MILES SOUTHEAST OF OLD WAXHAW-MONROE ROAD.

TYPE OF WORK: GRADING, PAVING, AND THERMOPLASTIC PAVEMENT MARKINGS.



CLEARING ON THIS PROJECT SHALL BE TO THE LIMITS ESTABLISHED BY METHOD II AS DESCRIBED IN THE NCDOT STANDARD DRAWINGS

STATE	STATE PROJECT REFERENCE NO.	SHEET NO.	TOTAL SHEETS
N.C.	50138.3.130	1	
STATE PROJ. NO.	F.A. PROJ. NO.	DESCRIPTION	
50138.1.130	HSIP-1007(034)	P.E.	
50138.2.130	HSIP-1007(034)	R/W	
50138.3.130	HSIP-1007(034)	CONST.	



DESIGN DATA

ADT	=	
ADT	=	
DHV	=	%
D	=	%
T	=	%
V	=	MPH

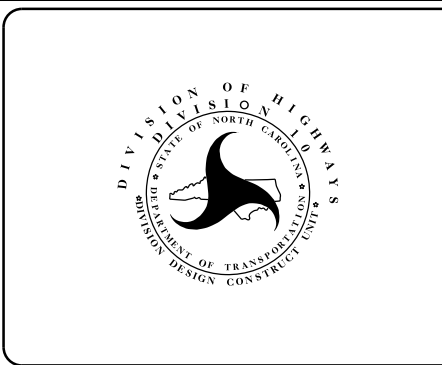
PROJECT LENGTH

LENGTH OF ROADWAY PROJECT	50138.3.130	= 0.38	MILES
TOTAL LENGTH OF STATE PROJECT	50138.3.130	= 0.38	MILES

Prepared in the Office of:
DIVISION OF HIGHWAYS
DIVISION TEN
DIVISION DESIGN / CONSTRUCT UNIT

2012 STANDARD SPECIFICATIONS

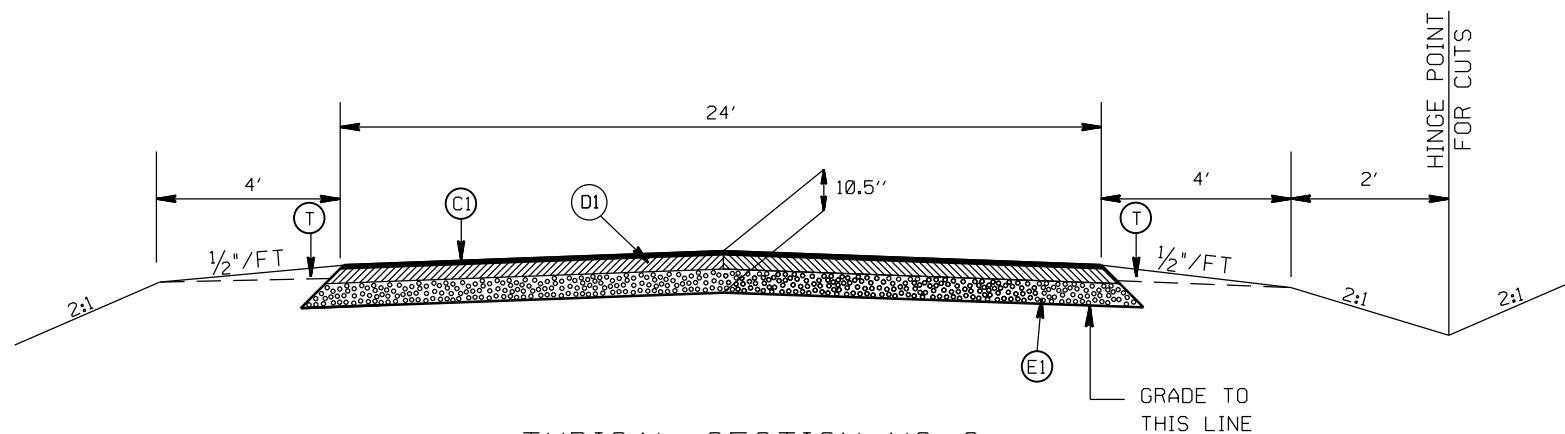
RIGHT OF WAY DATE: _____	DONALD GRIFFITH PROJECT ENGINEER
LETTING DATE: APRIL 19, 2017	DONALD HARWARD PROJECT DESIGN ENGINEER



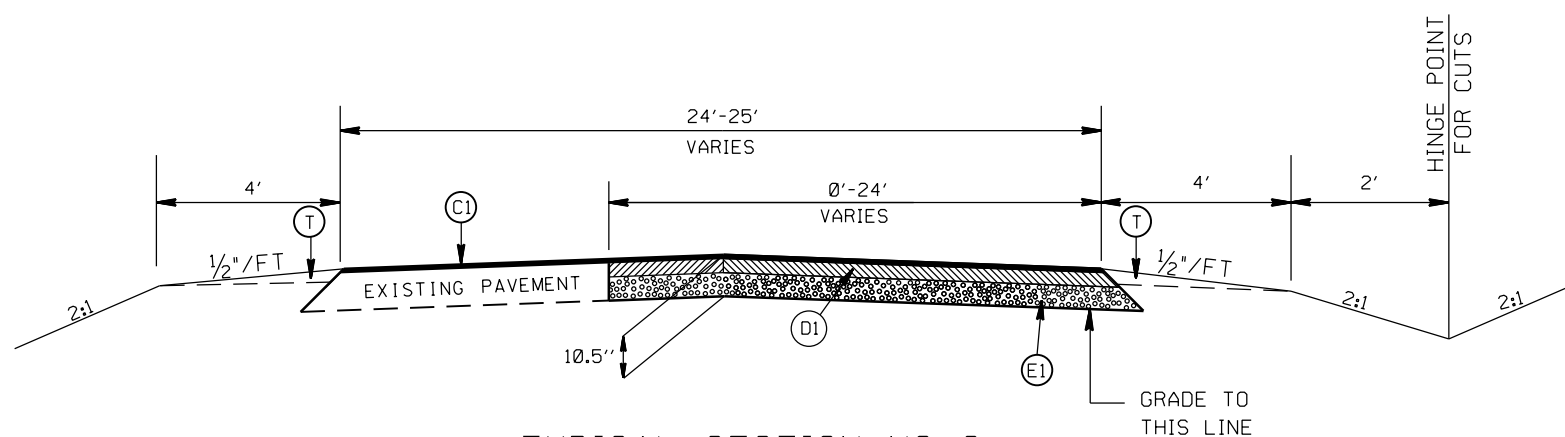
DIVISION OF HIGHWAYS
STATE OF NORTH CAROLINA

DocuSigned by:
Donald Griffith 3/7/2017
7153CE23F21843F...
APPROVED BY
DDC ENGINEER DATE

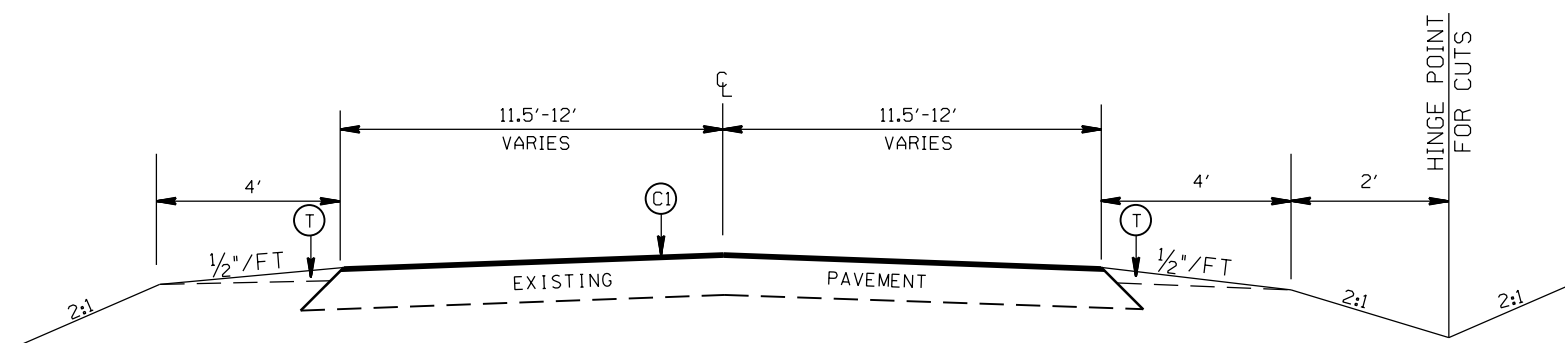
STATE	PROJECT NO.	SHEET NO.	TOTAL SHEETS
N.C.	50138.3130	2	
F.A. PROJECT NO. HSP-1007(034)			



TYPICAL SECTION NO. 3
STA. 13+65.31 TO 16+40.91 -L-



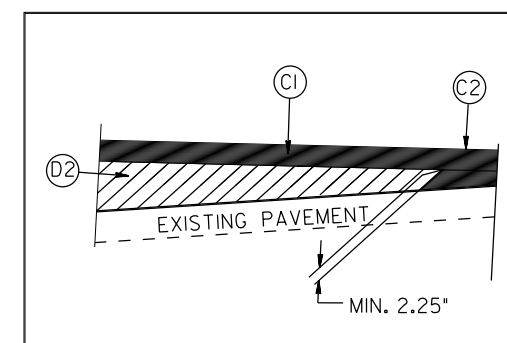
TYPICAL SECTION NO. 2
STA. 12+03 TO 13+65.31 -L-
STA. 16+40.91 TO 18+10 -L-



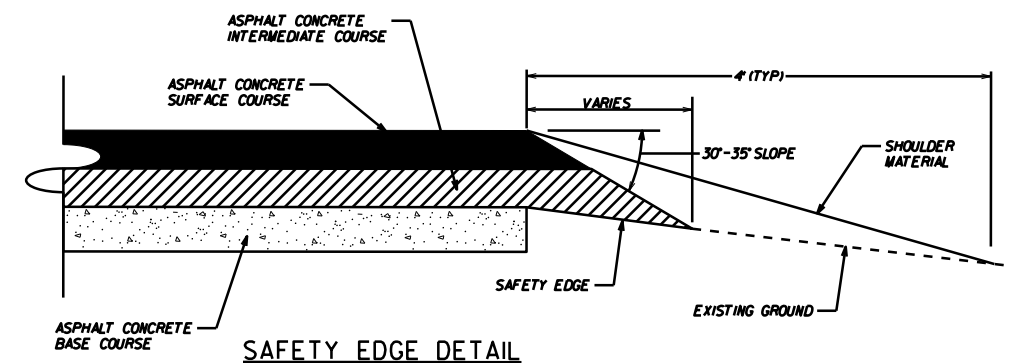
TYPICAL SECTION NO. 1
STA. 10+00 TO 12+03 -L-
STA. 18+10 TO 20+00 -L-

PAVEMENT SCHEDULE

(C1)	PROP. APPROX. 1½" ASPHALT CONC. SURFACE COURSE, TYPE S9.5B, AT AN AVERAGE RATE OF 168 LBS. PER SQ. YD.
(C2)	PROP. VARIABLE DEPTH ASPHALT CONC. SURFACE COURSE
(D1)	PROP. APPROX. 4" ASPHALT CONC. INTERMEDIATE COURSE, TYPE I19.0B, AT AN AVERAGE RATE OF 456 LBS. PER SQ. YD.
(D2)	PROP. VARIABLE DEPTH ASPHALT CONC. INTERMEDIATE COURSE
(E1)	PROP. APPROX. 5" ASPHALT CONC. BASE COURSE, TYPE B25.0B, AT AN AVERAGE RATE OF 570 LBS. PER SQ. YD.
(T)	EARTH MATERIAL



WEDGING DETAIL



SAFETY EDGE DETAIL

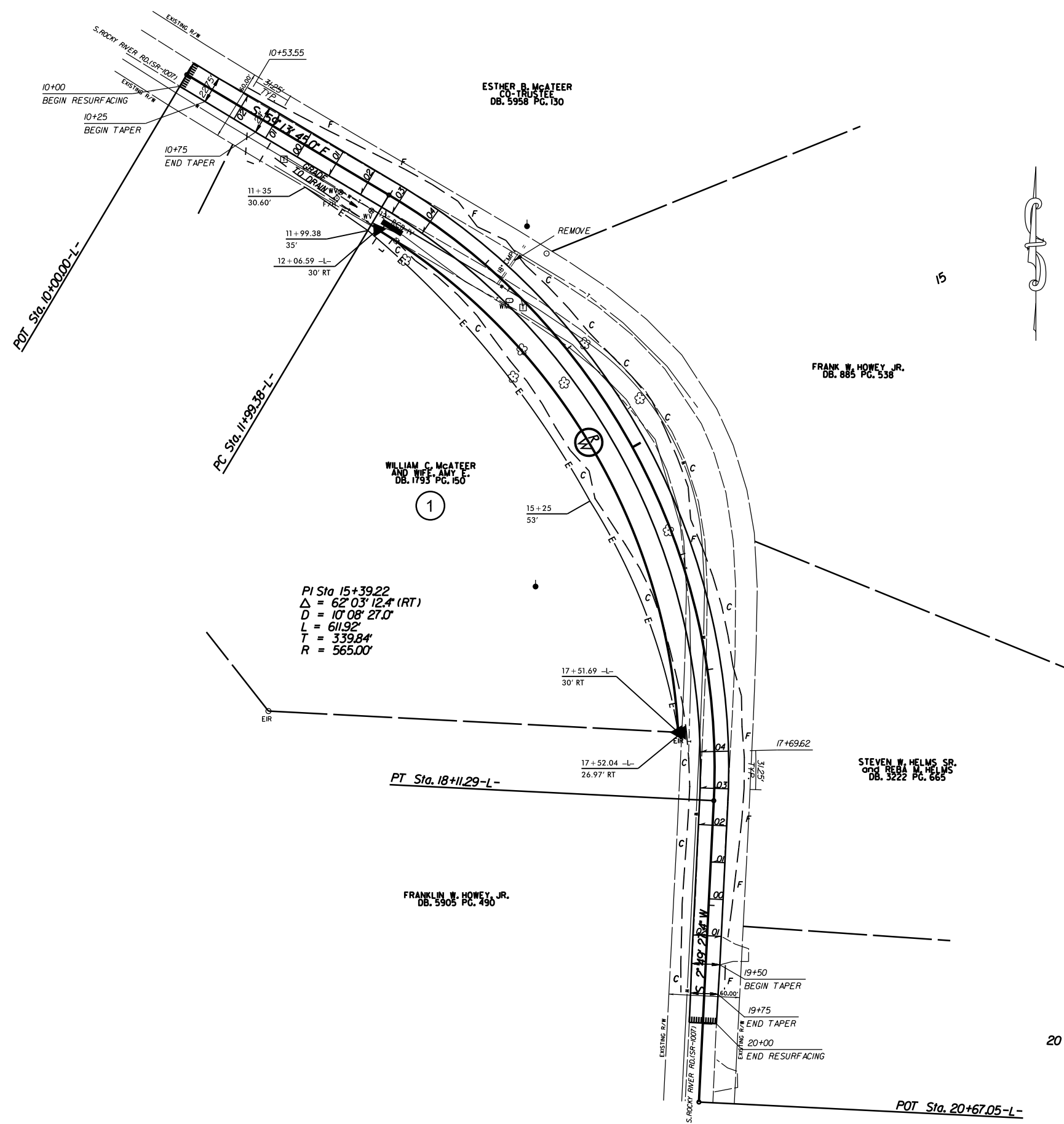
S. ROCKY RIVER RD. (SR-1007)
CURVE REALIGNMENT

SCALE	N/A
DATE	3/16
DWG. BY	DLS
DESIGN BY	JDH
APPROVED	DCG



REVISIONS	

STATE	PROJECT NO.	SHEET NO.	TOTAL SHEETS
N.C.	50138.3.130	4	
F.A. PROJECT NO. H5IP-1007(034)			



NOTE: INCIDENTAL MILL APPROX. 25' AT EACH TIE IN TO PROVIDE A SMOOTH TRANSITION TO THE EXISTING ASPHALT PAVEMENT.

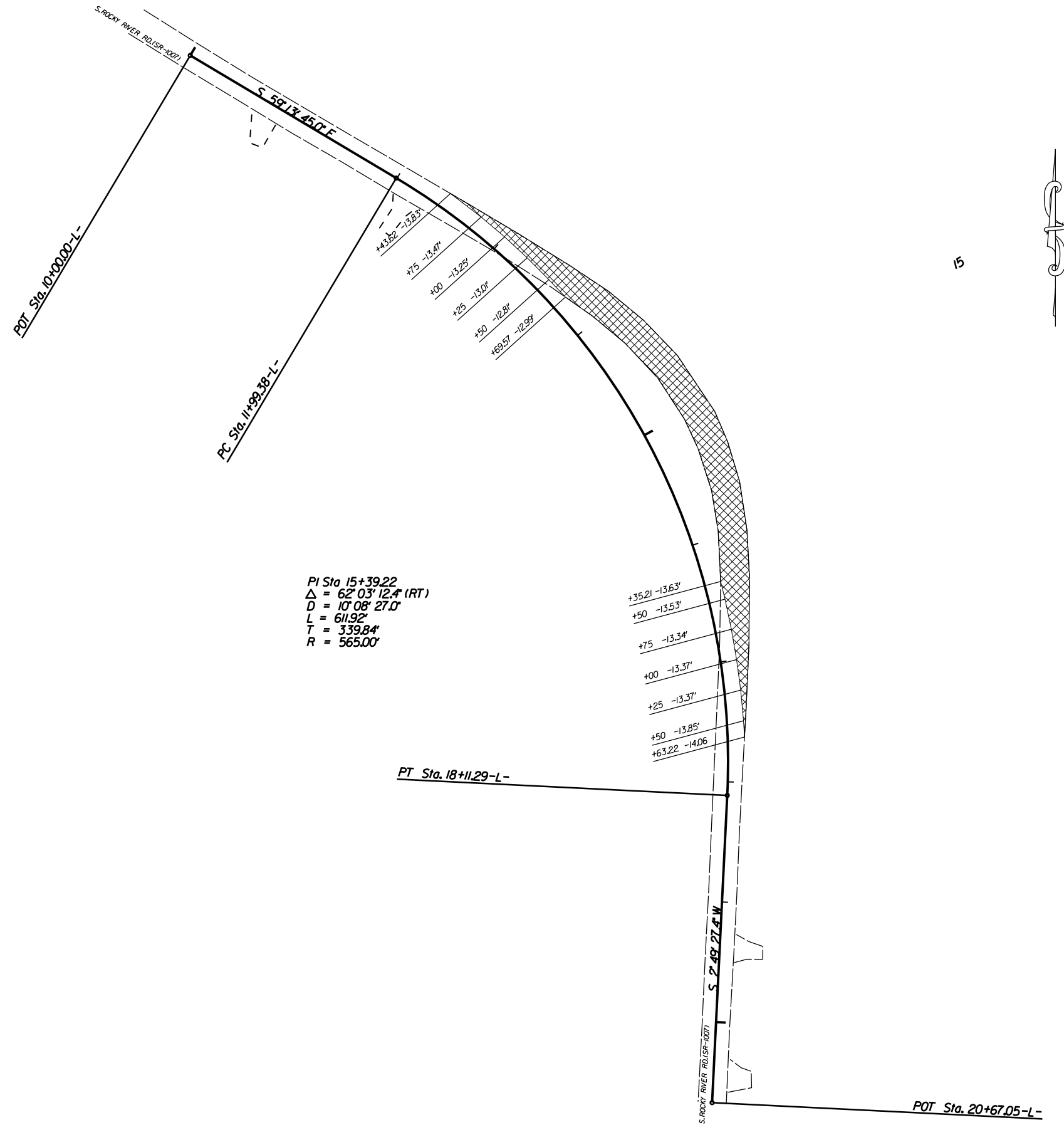
S. ROCKY RIVER RD. (SR-1007)
CURVE REALIGNMENT

SCALE	1"=50'
DATE	3/16
DWG. BY	DLS
DESIGN BY	JDH
APPROVED	DCG



REVISIONS	

STATE	PROJECT NO.	SHEET NO.	TOTAL SHEETS
N.C.	50138.3.130	5	
F.A. PROJECT NO. HSIP-1007(034)			



PI Sta 15+39.22
 $\Delta = 62^\circ 03' 12.4''$ (RT)
 D = 10' 08" 27.0"
 L = 611.92'
 T = 339.84'
 R = 565.00'

PAVEMENT REMOVAL

S. ROCKY RIVER RD. (SR-1007)
CURVE REALIGNMENT

SCALE	1"=50'		REVISIONS	
DATE	3/16			
DWG. BY	DLS			
DESIGN BY	JDH			
APPROVED	DCG			

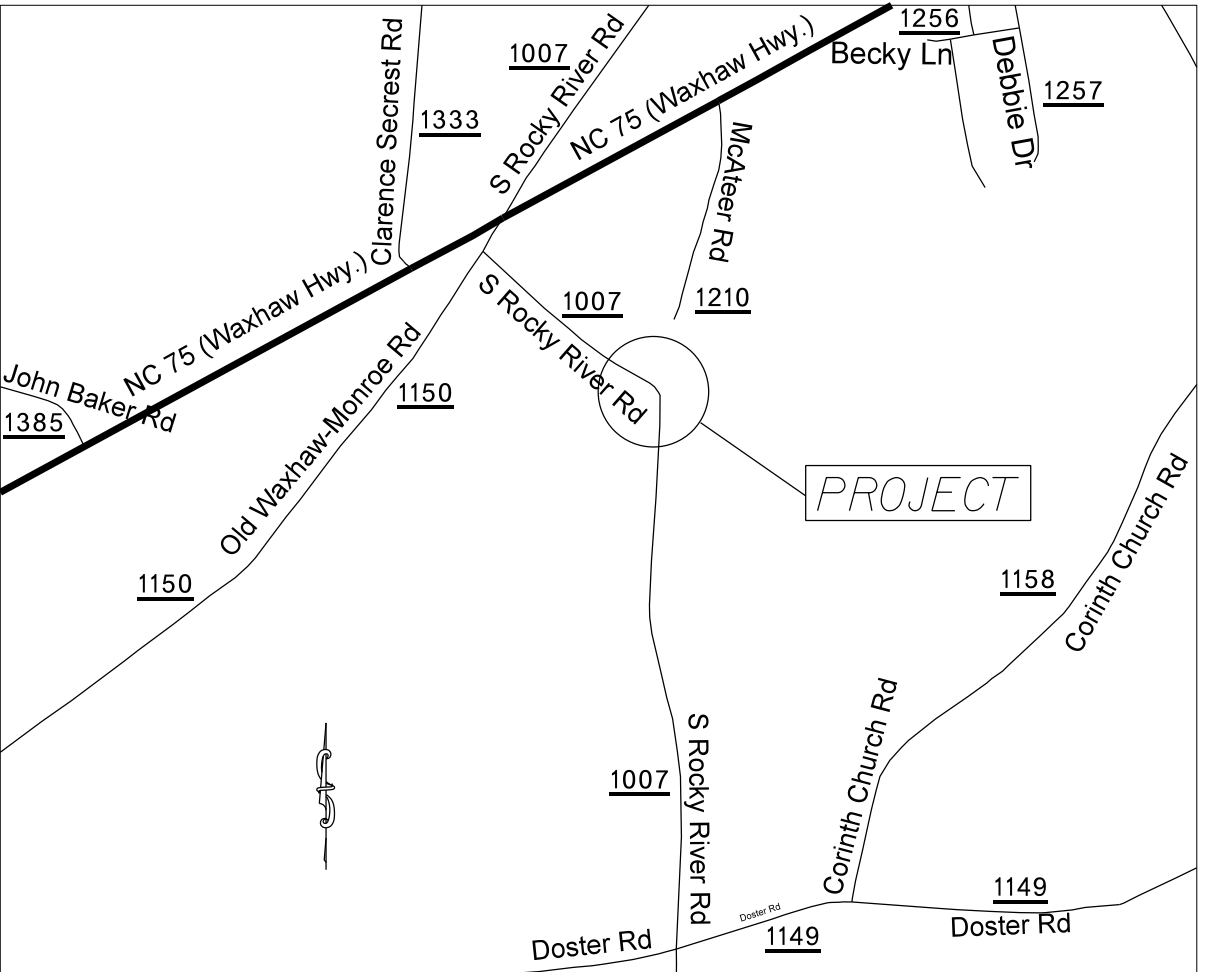
PROJECT: 50138.3.130 TIP: W-5601EA

STATE OF NORTH CAROLINA
 DIVISION OF HIGHWAYS
 PLAN FOR PROPOSED
 HIGHWAY EROSION CONTROL

STATE	STATE PROJECT REFERENCE NO.	SHEET NO.	TOTAL SHEETS
N.C.	50138.3.130	EC-1	
STATE PROJ. NO.	F.A. PROJ. NO.	DESCRIPTION	

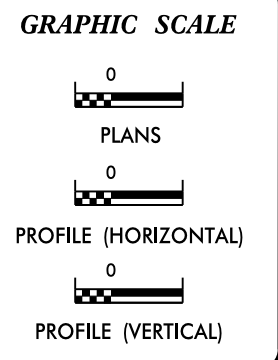
EROSION AND SEDIMENT CONTROL MEASURES

Std. #	Description	Symbol
1630.05	Temporary Silt Ditch	TD
1630.05	Temporary Diversion	TD
1605.01	Temporary Silt Fence	III III III
1606.01	Special Sediment Control Fence	△△△△△△△△
1622.01	Temporary Berms and Slope Drains	TD
1630.02	Silt Basin Type B	▤
1633.01	Temporary Rock Silt Check Type-A	⊗
	Temporary Rock Silt Check Type-A with Matting and Polyacrylamide (PAM)	⊗
1633.02	Temporary Rock Silt Check Type-B	▶
	Wattle/Coir Fiber Wattle	⊂
	Wattle/Coir Fiber Wattle with Polyacrylamide (PAM)	⊂
1634.01	Temporary Rock Sediment Dam Type-A	⊠
1634.02	Temporary Rock Sediment Dam Type-B	⊠
1635.01	Rock Pipe Inlet Sediment Trap Type-A	⊂
1635.02	Rock Pipe Inlet Sediment Trap Type-B	⊂
1630.04	Stilling Basin	⊞
1630.06	Special Stilling Basin	⊞
Rock Inlet Sediment Trap:		
1632.01	Type A	A
1632.02	Type B	B
1632.03	Type C	C
	Skimmer Basin	⊞
	Tiered Skimmer Basin	⊞
	Infiltration Basin	⊞



VICINITY MAP NOT TO SCALE

THIS PROJECT CONTAINS
 EROSION CONTROL PLANS
 FOR CLEARING AND
 GRUBBING PHASE OF
 CONSTRUCTION.



ROADSIDE ENVIRONMENTAL UNIT
 DIVISION OF HIGHWAYS
 STATE OF NORTH CAROLINA

THESE EROSION AND SEDIMENT CONTROL PLANS COMPLY
 WITH THE REGULATIONS SET FORTH BY THE
 NCG-010000 GENERAL CONSTRUCTION PERMIT EFFECTIVE AUGUST 3, 2011
 ISSUED BY THE NORTH CAROLINA DEPARTMENT OF ENVIRONMENT AND
 NATURAL RESOURCES DIVISION OF WATER QUALITY.

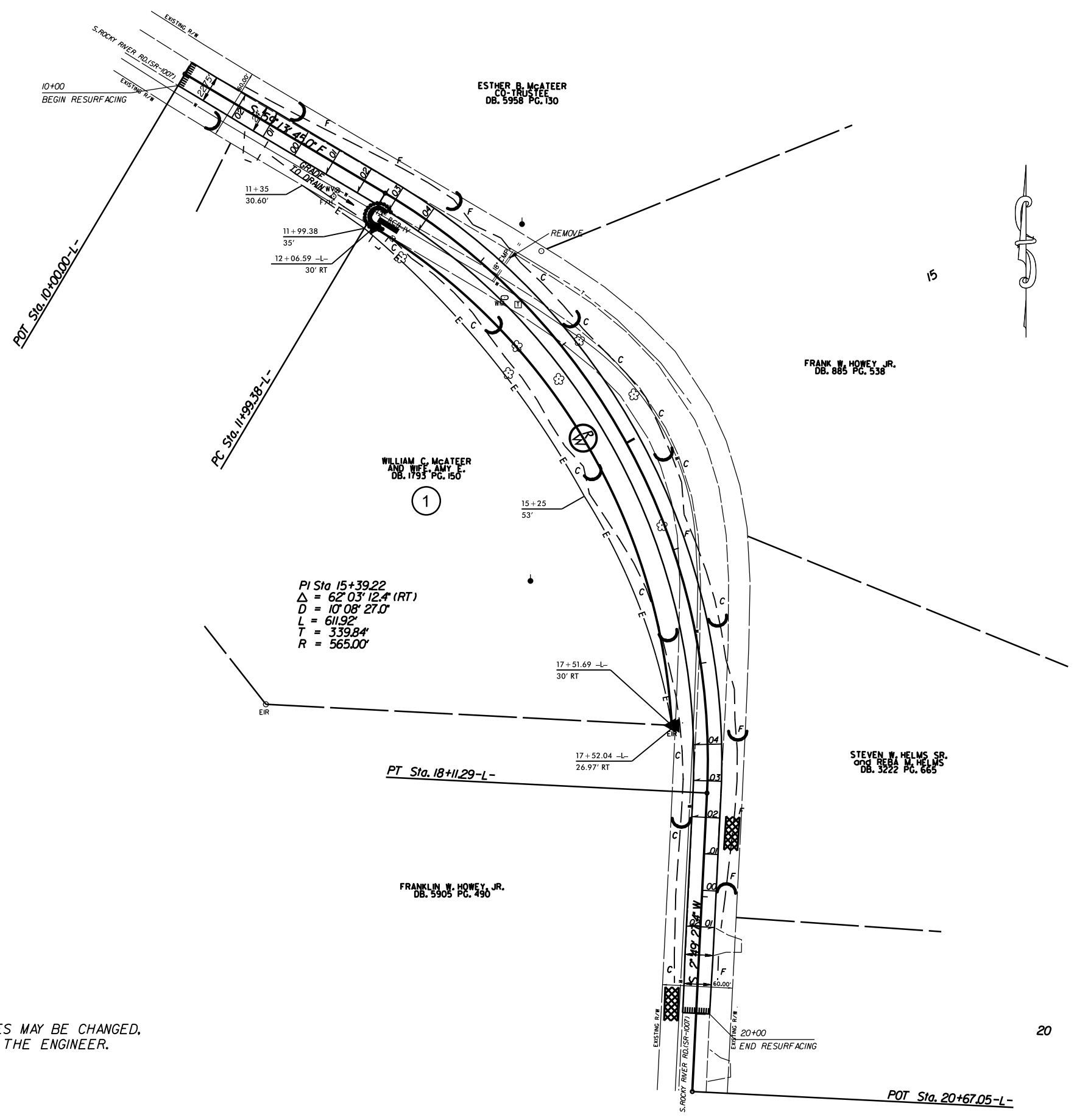
Prepared In the Office of:
DDC UNIT DIVISION 10
 DEPARTMENT OF TRANSPORTATION
 DIVISION OF HIGHWAYS
2012 STANDARD SPECIFICATIONS

DONALD HARWARD 3028
 EROSION CONTROL DESIGNER LEVEL III-A CERTIFICATION #

- Roadway Standard Drawings
- The following roadway english standards as appear in "Roadway Standard Drawings"- Roadway Design Unit - N. C. Department of Transportation - Raleigh, N. C., dated January 2012 and the latest revision thereto are applicable to this project and by reference hereby are considered a part of these plans.
- | | | | |
|---------|----------------------------------|---------|--------------------------------------|
| 1604.01 | Railroad Erosion Control Detail | 1632.01 | Rock Inlet Sediment Trap Type A |
| 1605.01 | Temporary Silt Fence | 1632.02 | Rock Inlet Sediment Trap Type B |
| 1606.01 | Special Sediment Control Fence | 1632.03 | Rock Inlet Sediment Trap Type C |
| 1607.01 | Gravel Construction Entrance | 1633.01 | Temporary Rock Silt Check Type A |
| 1622.01 | Temporary Berms and Slope Drains | 1633.02 | Temporary Rock Silt Check Type B |
| 1630.01 | Riser Basin | 1634.01 | Temporary Rock Sediment Dam Type A |
| 1630.02 | Silt Basin Type B | 1634.02 | Temporary Rock Sediment Dam Type B |
| 1630.03 | Temporary Silt Ditch | 1635.01 | Rock Pipe Inlet Sediment Trap Type A |
| 1630.04 | Stilling Basin | 1635.02 | Rock Pipe Inlet Sediment Trap Type B |
| 1630.05 | Temporary Diversion | 1640.01 | Coir Fiber Baffle |
| 1630.06 | Special Stilling Basin | 1645.01 | Temporary Stream Crossing |
| 1631.01 | Matting Installation | | |


C:\MAR-2012\0505\c:\river\ddc\ec\1383130\sa_rocky_river_curve.un2.ec_title.dgn

STATE	PROJECT NO.	SHEET NO.	TOTAL SHEETS
N.C.	50138.3.130	EC-2	
F.A. PROJECT NO. HSIP-1007(034)			

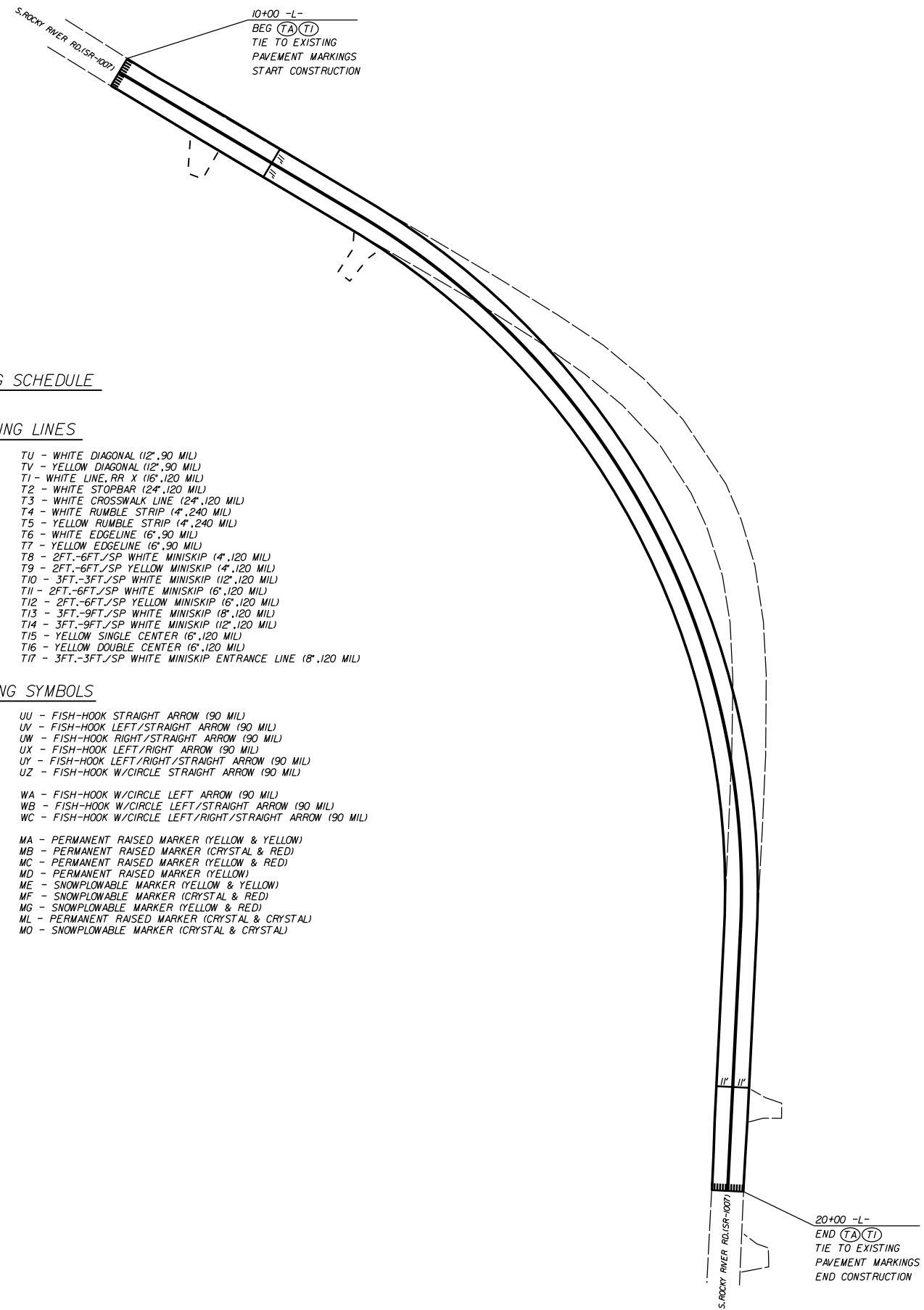


EROSION CONTROL MEASURES MAY BE CHANGED,
IN FIELD AS DIRECTED BY THE ENGINEER.

S. ROCKY RIVER RD. (SR-1007)
CURVE REALIGNMENT

SCALE	1"=50'		REVISIONS
DATE	3/16		
DWG. BY	DLS		
DESIGN BY	JDH		
APPROVED	DCG		

STATE	PROJECT NO.	SHEET NO.	TOTAL SHEETS
N.C.	50138.3J30	PMP-1	
F.A. PROJECT NO. HSP-1007(034)			



PAVEMENT MARKING SCHEDULE

PAVEMENT MARKING LINES

- | | |
|--|--|
| TA - WHITE EDGELINE (4',.90 MIL) | TU - WHITE DIAGONAL (12',.90 MIL) |
| TB - YELLOW EDGELINE (4',.90 MIL) | TV - YELLOW DIAGONAL (12',.90 MIL) |
| TC - 10FT. WHITE SKIP (4',.120 MIL) | T1 - WHITE LINE, RR X (16',.120 MIL) |
| TD - 3FT.-9FT./SP WHITE MINISKIP (4',.120 MIL) | T2 - WHITE STOPSBAR (24',.120 MIL) |
| TE - WHITE SOLID LANE LINE (4',.120 MIL) | T3 - WHITE CROSSWALK LINE (12',.120 MIL) |
| TF - 10FT. YELLOW SKIP (4',.120 MIL) | T4 - WHITE RUMBLE STRIP (4',.240 MIL) |
| TH - YELLOW SINGLE CENTER (4',.120 MIL) | T5 - YELLOW RUMBLE STRIP (4',.240 MIL) |
| TI - YELLOW DOUBLE CENTER (4',.120 MIL) | T6 - WHITE EDGELINE (6',.90 MIL) |
| TJ - 10FT. WHITE SKIP (6',.120 MIL) | T7 - YELLOW EDGELINE (6',.90 MIL) |
| TK - 3FT.-9FT./SP WHITE MINISKIP (6',.120 MIL) | T8 - 2FT.-6FT./SP WHITE MINISKIP (4',.120 MIL) |
| TL - WHITE SOLID LANE LINE (6',.120 MIL) | T9 - 2FT.-6FT./SP YELLOW MINISKIP (4',.120 MIL) |
| TM - 10FT. YELLOW SKIP (6',.120 MIL) | T10 - 3FT.-3FT./SP WHITE MINISKIP (12',.120 MIL) |
| TN - WHITE GORELINE (8',.90 MIL) | T11 - 2FT.-6FT./SP WHITE MINISKIP (6',.120 MIL) |
| TO - WHITE DIAGONAL (8',.90 MIL) | T12 - 2FT.-6FT./SP YELLOW MINISKIP (6',.120 MIL) |
| TP - YELLOW DIAGONAL (8',.90 MIL) | T13 - 3FT.-9FT./SP WHITE MINISKIP (18',.120 MIL) |
| TQ - WHITE CROSSWALK LINE (8',.120 MIL) | T14 - 3FT.-9FT./SP WHITE MINISKIP (12',.120 MIL) |
| TR - WHITE SOLID LANE LINE (8',.120 MIL) | T15 - YELLOW SINGLE CENTER (16',.120 MIL) |
| TS - WHITE GORELINE (12',.90 MIL) | T16 - YELLOW DOUBLE CENTER (16',.120 MIL) |
| TT - WHITE SOLID LANE LINE (12',.120 MIL) | T17 - 3FT.-3FT./SP WHITE MINISKIP ENTRANCE LINE (18',.120 MIL) |

PAVEMENT MARKING SYMBOLS

- | | |
|--|--|
| UA - LEFT TURN ARROW (90 MIL) | UU - FISH-HOOK STRAIGHT ARROW (90 MIL) |
| UB - RIGHT TURN ARROW (90 MIL) | UV - FISH-HOOK LEFT/STRAIGHT ARROW (90 MIL) |
| UC - STRAIGHT ARROW (90 MIL) | UW - FISH-HOOK RIGHT/STRAIGHT ARROW (90 MIL) |
| UD - COMBO. LEFT/STRAIGHT ARROW (90 MIL) | UX - FISH-HOOK LEFT/RIGHT ARROW (90 MIL) |
| UE - COMBO. RIGHT/STRAIGHT ARROW (90 MIL) | UY - FISH-HOOK LEFT/RIGHT/STRAIGHT ARROW (90 MIL) |
| UF - COMBO. LEFT/RIGHT ARROW (90 MIL) | UZ - FISH-HOOK W/CIRCLE STRAIGHT ARROW (90 MIL) |
| UG - COMBO. LEFT/RIGHT/STRAIGHT ARROW (90 MIL) | WA - FISH-HOOK W/CIRCLE LEFT ARROW (90 MIL) |
| UH - HANDICAP PARKING (90 MIL) | WB - FISH-HOOK W/CIRCLE LEFT/STRAIGHT ARROW (90 MIL) |
| UI - ALPHANUMERIC CHAR. (120 MIL) | WC - FISH-HOOK W/CIRCLE LEFT/RIGHT/STRAIGHT ARROW (90 MIL) |
| UJ - BICYCLE SYMBOL (90 MIL) | MA - PERMANENT RAISED MARKER (YELLOW & YELLOW) |
| UK - BICYCLE STRAIGHT ARROW (90 MIL) | MB - PERMANENT RAISED MARKER (CRYSTAL & RED) |
| UL - BICYCLE CHAR. (120 MIL) | MC - PERMANENT RAISED MARKER (YELLOW & RED) |
| UM - 12' YIELD LINE TRIANGLE (90 MIL) | MD - PERMANENT RAISED MARKER (YELLOW) |
| UN - 24' YIELD LINE TRIANGLE (90 MIL) | ME - SNOWPLOWABLE MARKER (YELLOW & YELLOW) |
| UO - BICYCLE LEFT ARROW (90 MIL) | MF - SNOWPLOWABLE MARKER (CRYSTAL & RED) |
| UP - MERGE ARROW (90 MIL) | MG - SNOWPLOWABLE MARKER (YELLOW & RED) |
| UQ - RAMP ARROW SYMBOL (90 MIL) | ML - PERMANENT RAISED MARKER (CRYSTAL & CRYSTAL) |
| UR - SHARROW (90 MIL) | MO - SNOWPLOWABLE MARKER (CRYSTAL & CRYSTAL) |
| US - BICYCLE LOOP DETECTOR (90 MIL) | |
| UT - U-TURN ARROW (90 MIL) | |

S. ROCKY RIVER RD. (SR-1007)
CURVE REALIGNMENT

SCALE	1"=50'
DATE	3/16
DWG. BY	DLS
DESIGN BY	JDH
APPROVED	DCG



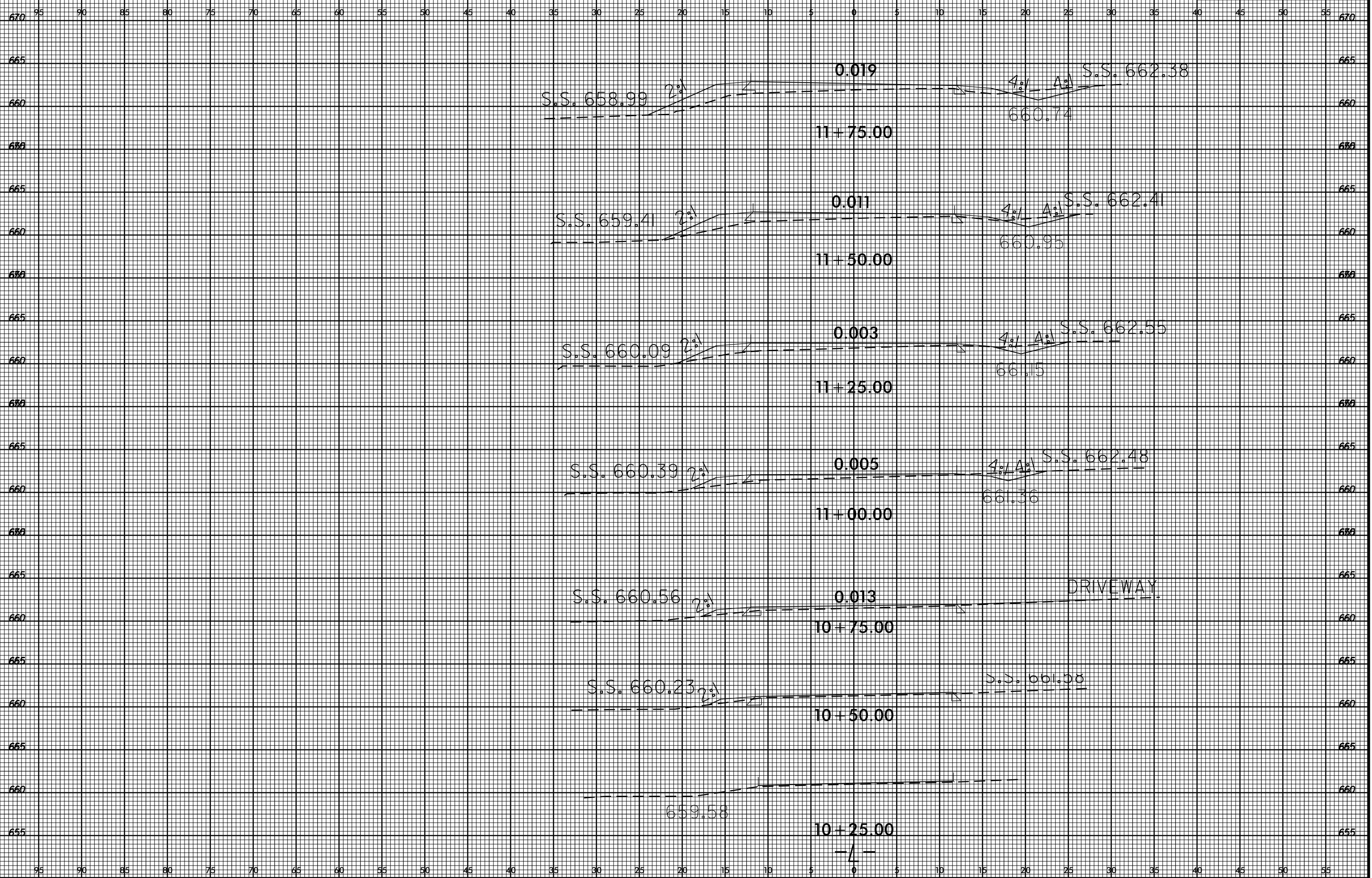
REVISIONS

8/23/99



PROJ. REFERENCE NO.
50138.3.130

SHEET NO.
X-1



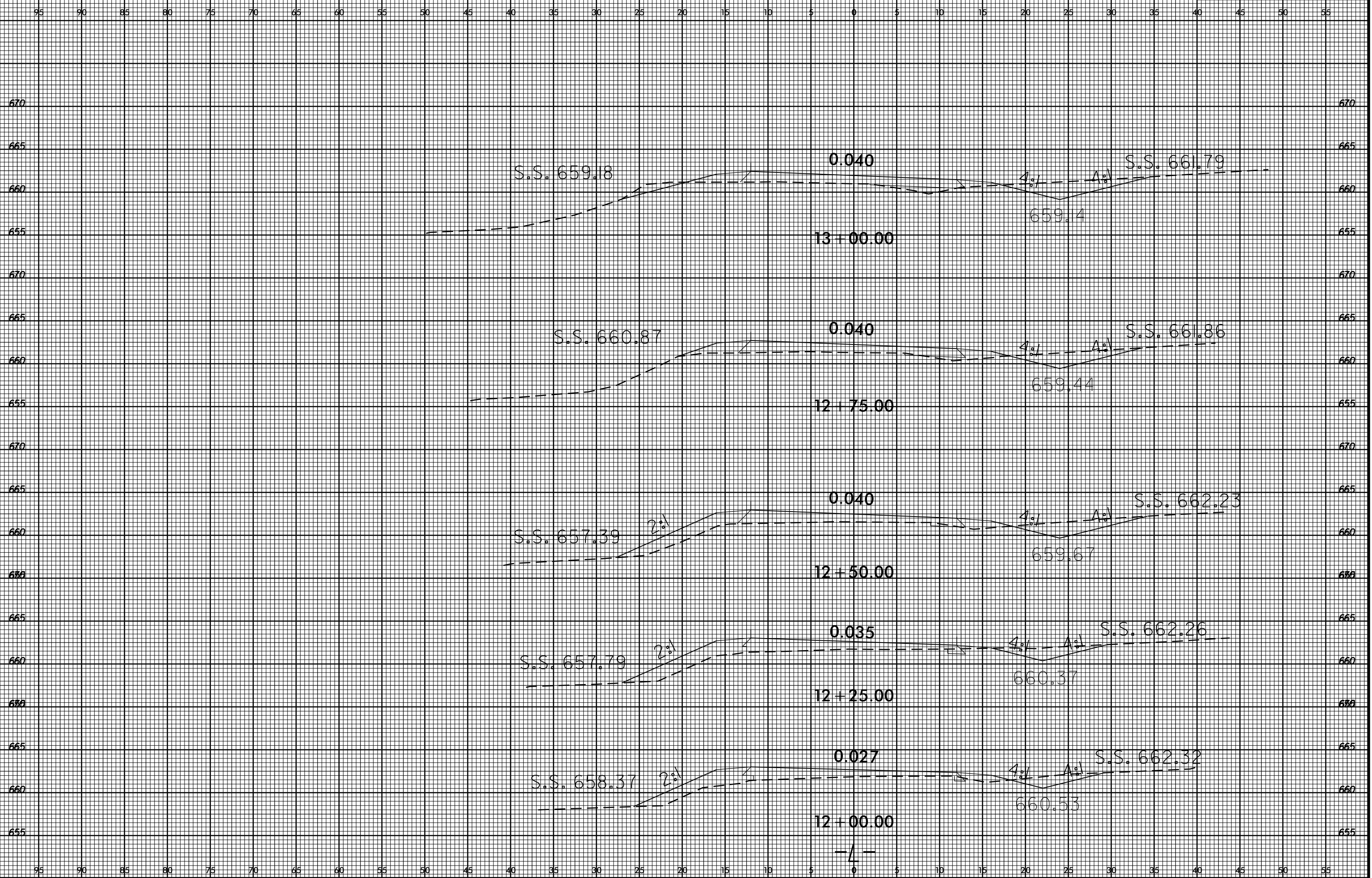
21-APR-2016 15:41
S:\DOC\ROY\Union\S_Rocky_River_Rd_Curve\XSC\S_Rocky_River_curve_un2_xp1.L.dgn
dlstinson AT D:\D\IV\CAD\279827

8/23/99

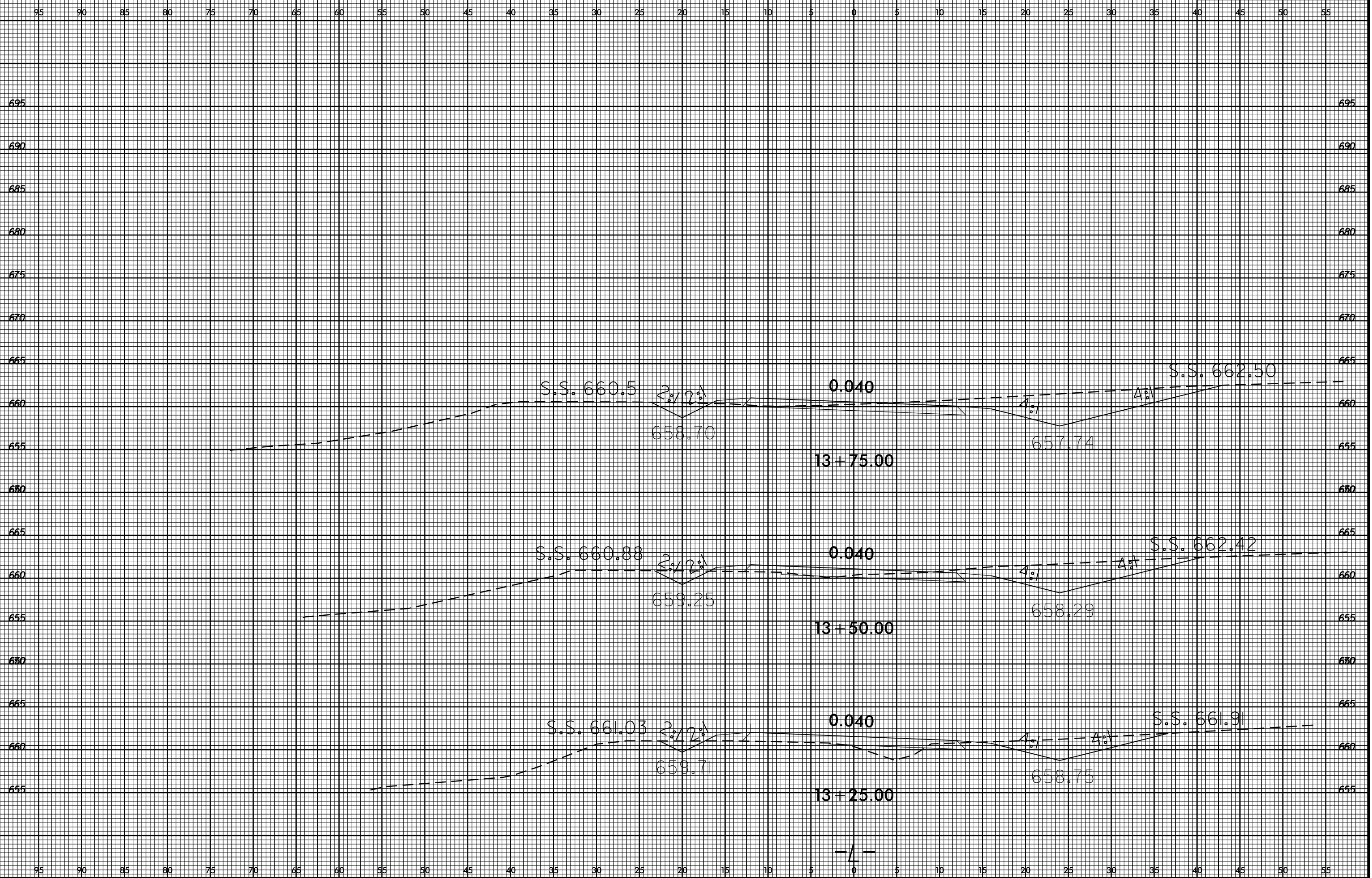


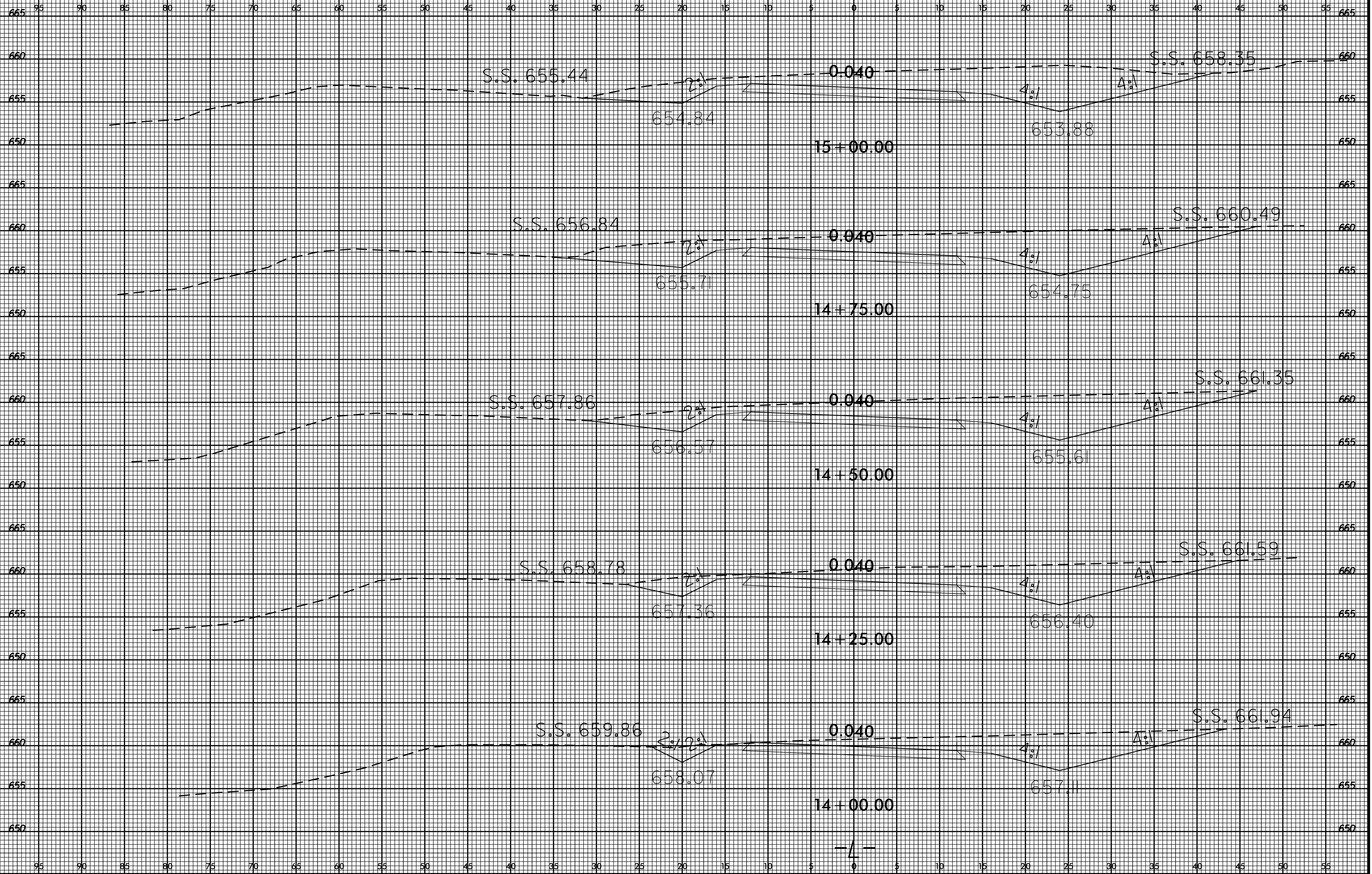
PROJ. REFERENCE NO.
50138.3.130

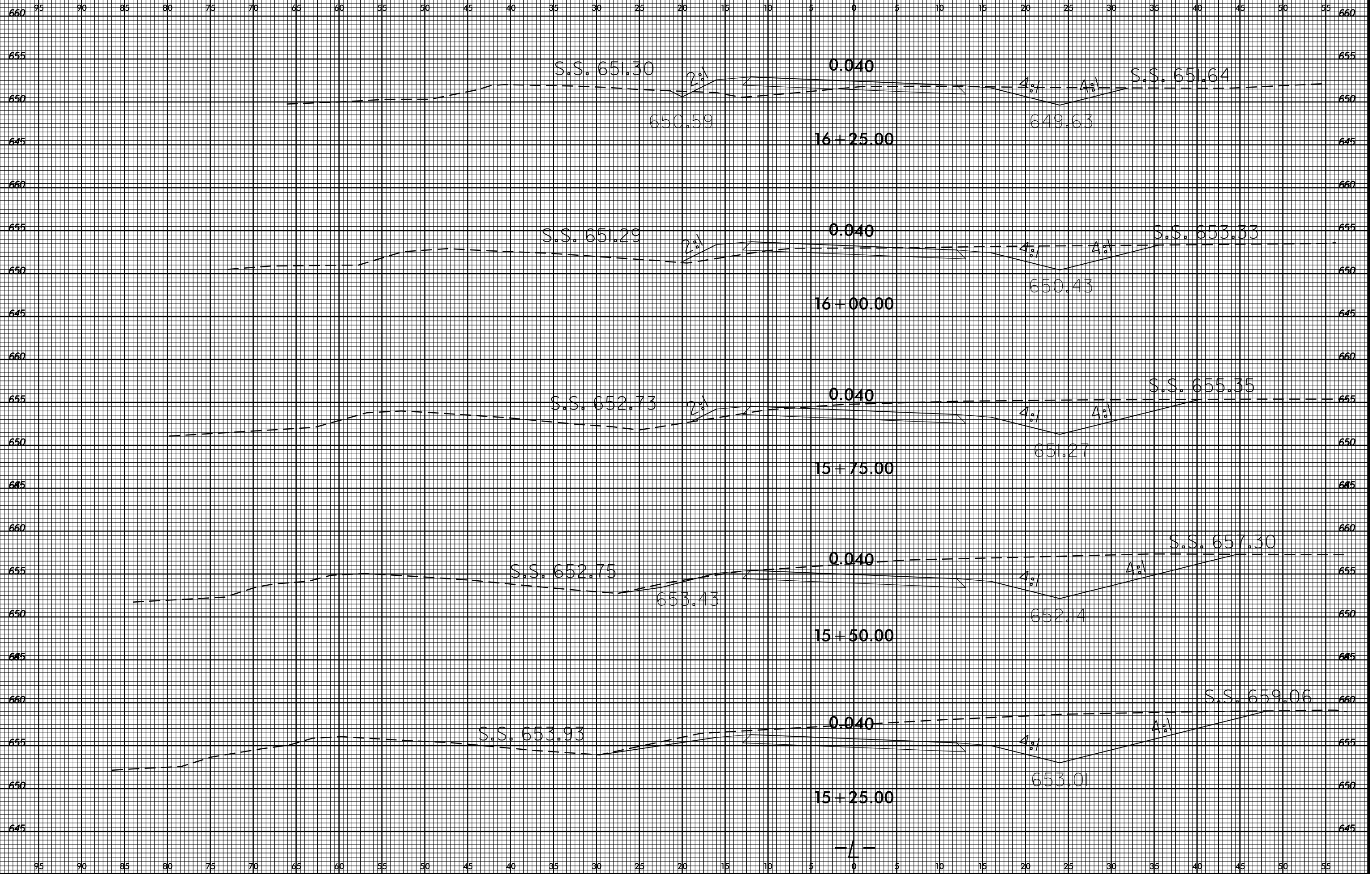
SHEET NO.
X-2



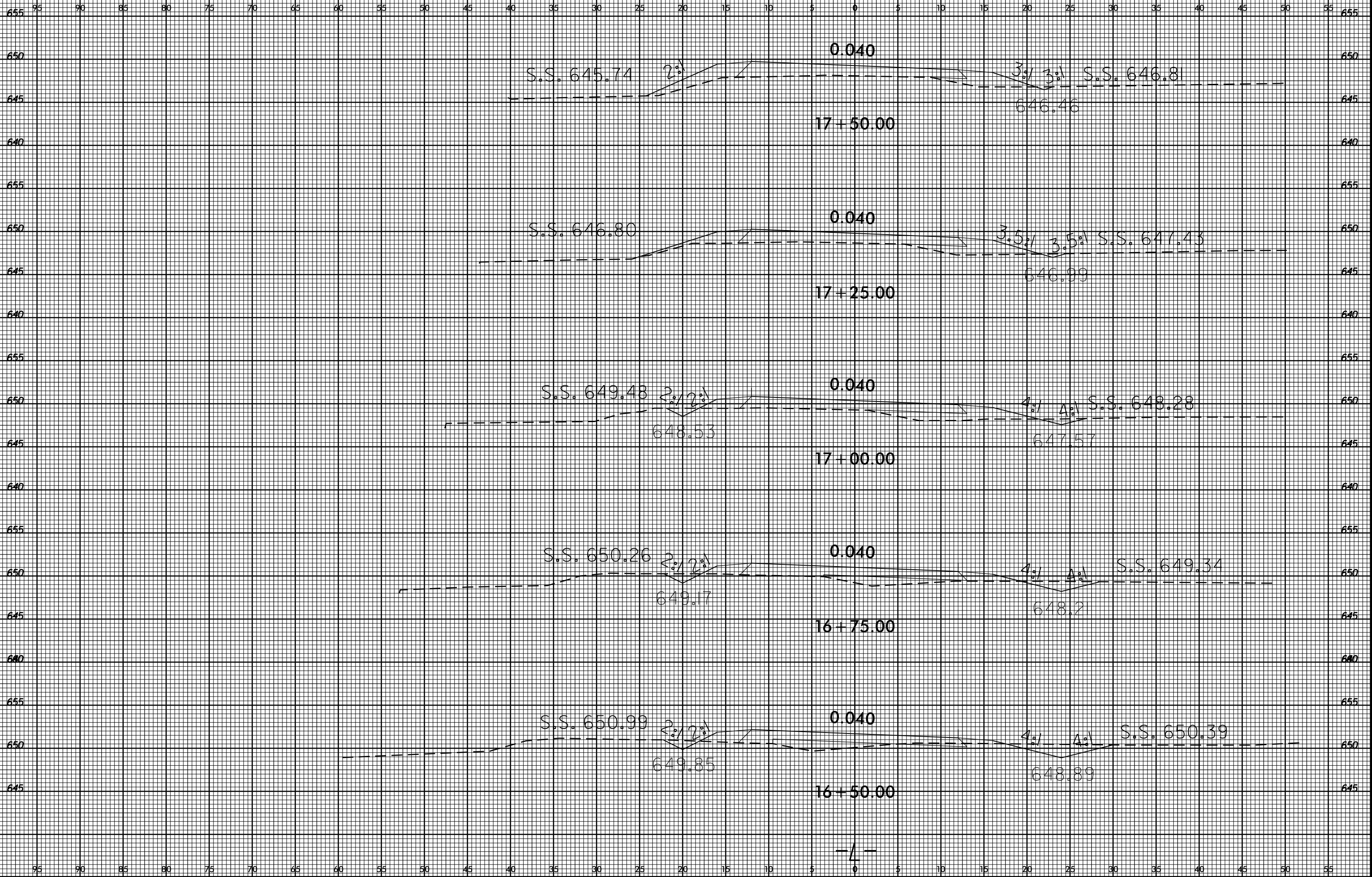
21-APR-2016 15:42
S:\DDC\ROY\Union\S_Rocky_River_Rd_Curve\XSC\S_Rocky_River_curve_un2_xp1.L.dgn
dl:simpson







21-APR-2016 15:48
S:\DDC\ROY\Union\S_Rocky_River_Rd_Curve\XSC\S_Rocky_River_curve_un2_xp1.L.dgn
dlstinson AT D:\D\IV\A0279827

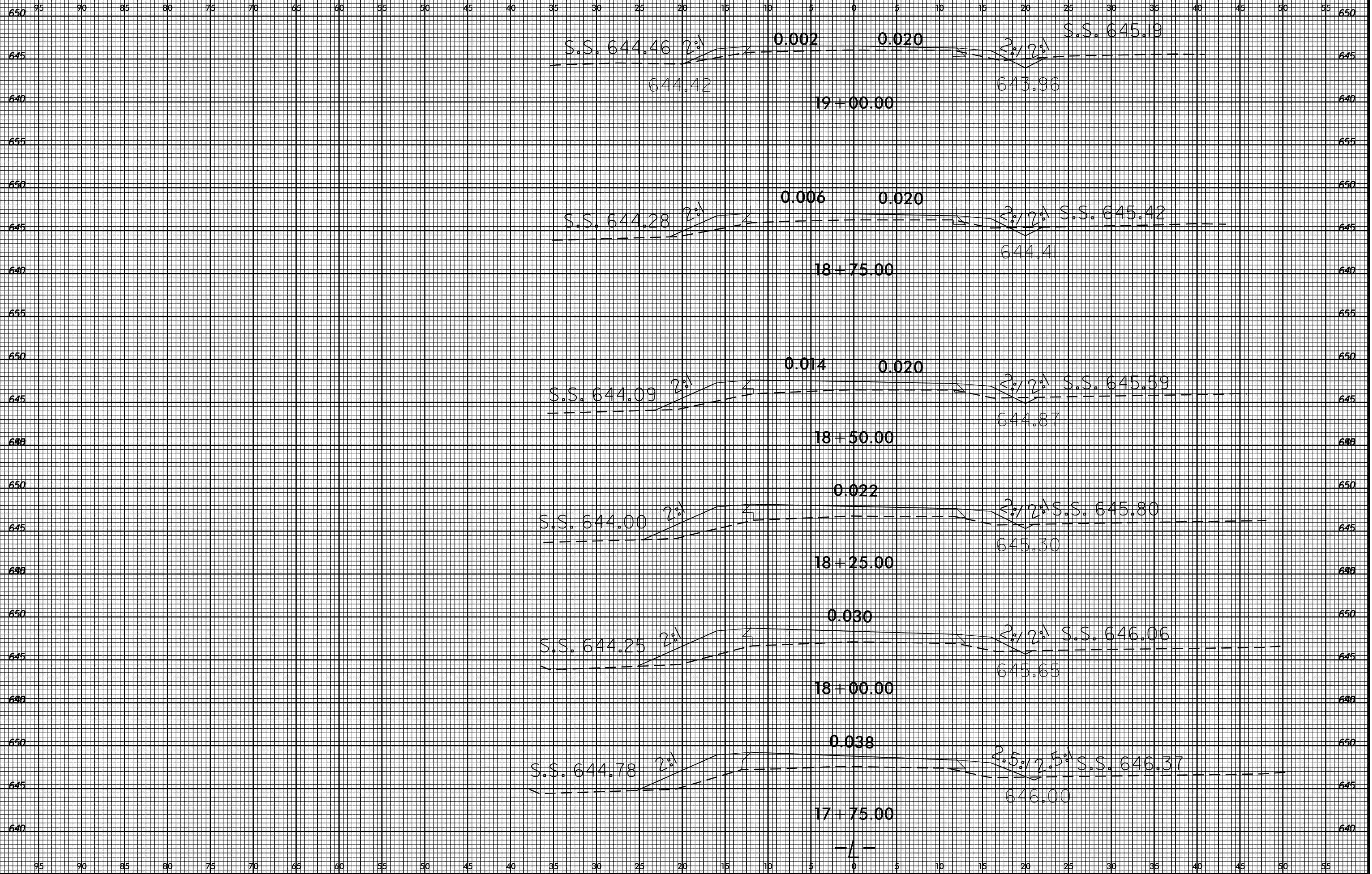


8/23/99



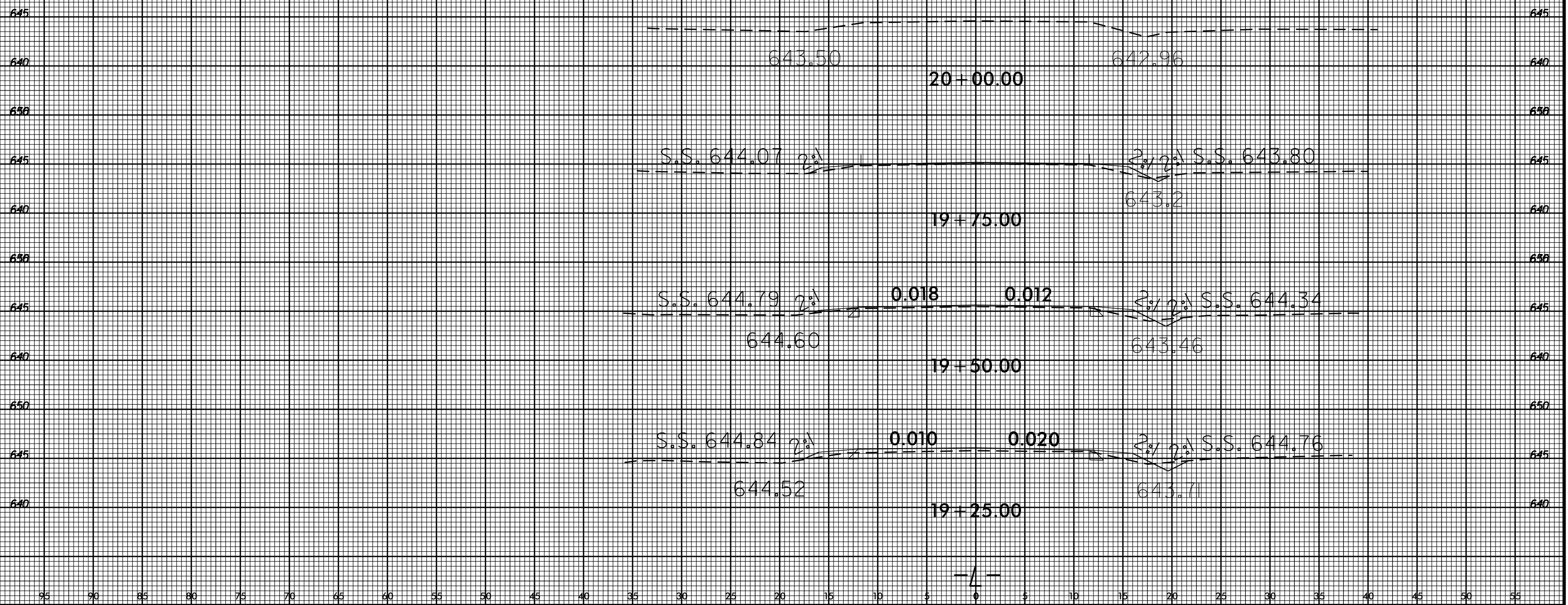
PROJ. REFERENCE NO.
50138.3.130

SHEET NO.
X-7



21-APR-2016 15:54
S:\DOC\ROY\Unpen\S_Rocky_River_Rd_Curve\XSC\S_rocky_river_curve_un2_xp1.L.dgn
dlstinson AT D:\D\IV\A0279827

95 90 85 80 75 70 65 60 55 50 45 40 35 30 25 20 15 10 5 0 5 10 15 20 25 30 35 40 45 50 55



95 90 85 80 75 70 65 60 55 50 45 40 35 30 25 20 15 10 5 0 5 10 15 20 25 30 35 40 45 50 55