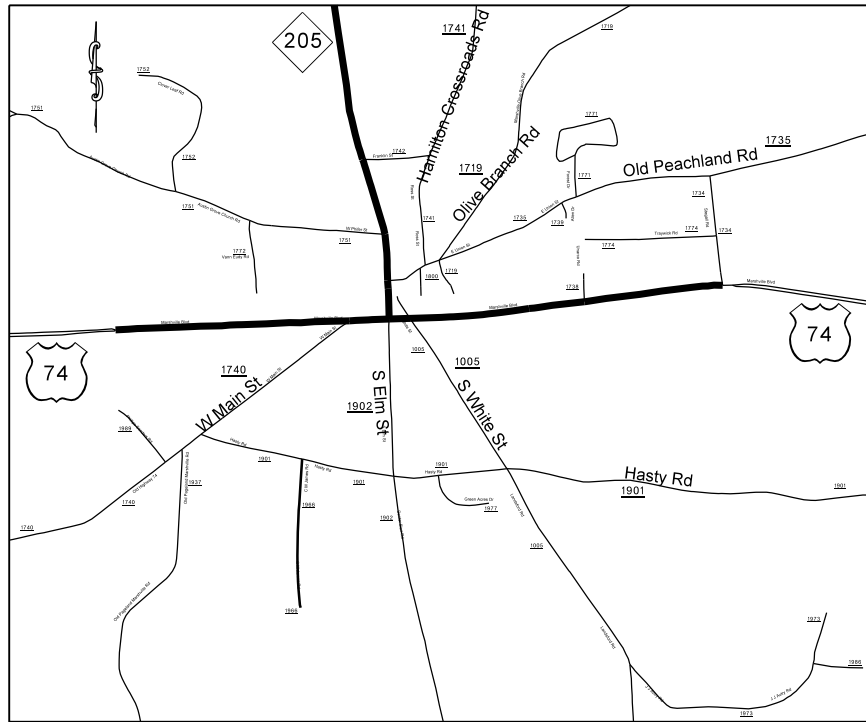


PROJECT: 3610.3.07 TIP: ER-2971

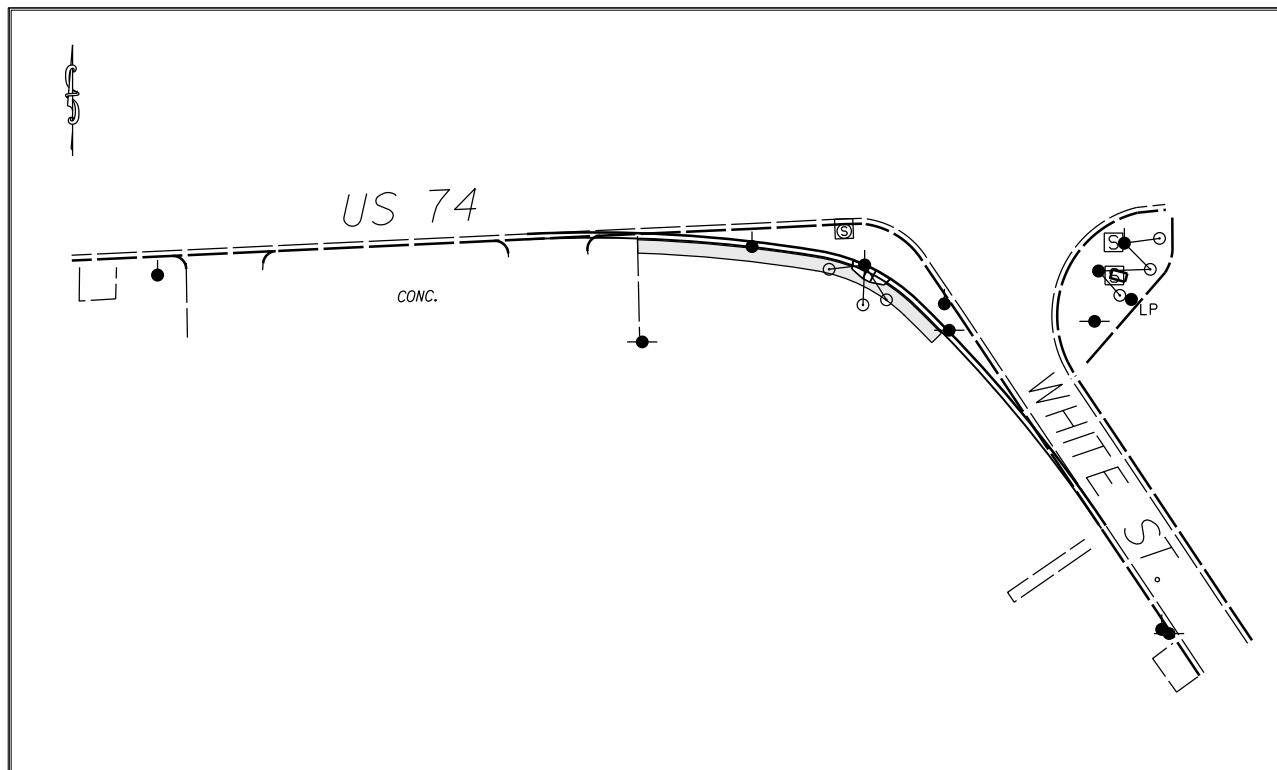


VICINITY MAP NOT TO SCALE

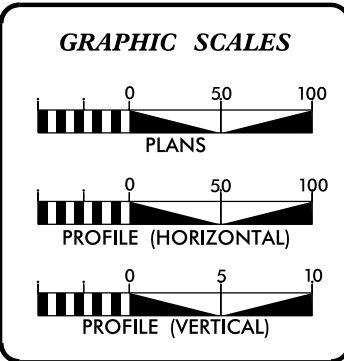
STATE OF NORTH CAROLINA
 DIVISION OF HIGHWAYS
UNION COUNTY

LOCATION: INTERSECTION OF US 74 AND WHITE ST. (SR-1005)

TYPE OF WORK: GRADING, PAVING, DRAINAGE, MILLING, CONC. CURB & GUTTER, AND THERMOPLASTIC PAVEMENT MARKINGS.



STATE	STATE PROJECT REFERENCE NO.	SHEET NO.	TOTAL SHEETS
N.C.	3610.3.07	1	
STATE PROJ. NO.	P.A. PROJ. NO.	DESCRIPTION	
	STP-0005-424	P.E.	
		R/W	
		CONST.	



DESIGN DATA

ADT	=	
ADT	=	
DHV	=	%
D	=	%
T	=	%
V	=	MPH

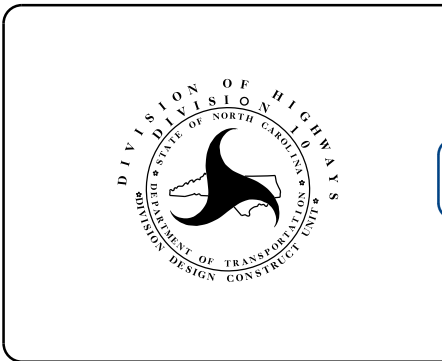
PROJECT LENGTH

LENGTH OF ROADWAY PROJECT 3610.3.07	=	0.05	MILES
TOTAL LENGTH OF STATE PROJECT 3610.3.07	=	0.05	MILES

Prepared in the Office of:
DIVISION OF HIGHWAYS
 DIVISION TEN
 DIVISION DESIGN / CONSTRUCT UNIT

2012 STANDARD SPECIFICATIONS

RIGHT OF WAY DATE: _____	RANDY BOWERS PROJECT ENGINEER
LETTING DATE: JUNE 17, 2015	DONALD HARWARD PROJECT DESIGN ENGINEER

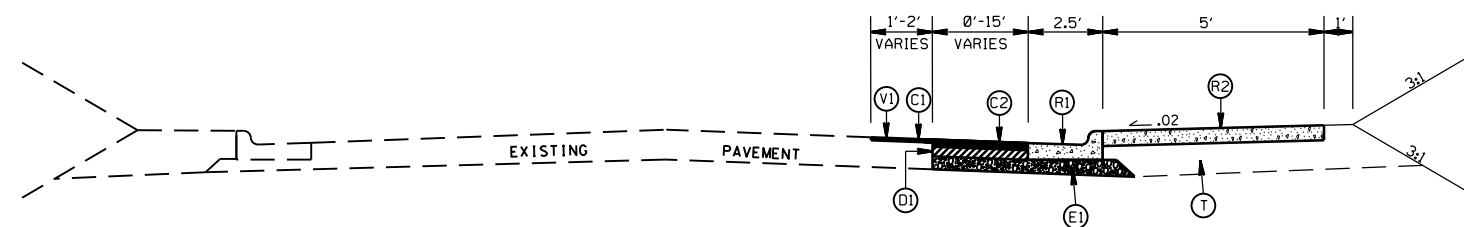


DIVISION OF HIGHWAYS
STATE OF NORTH CAROLINA

DocuSigned by:
 Randy Bowers 5/20/2015

52A4A66079864B2...
 APPROVED BY _____ DATE _____
 DDC ENGINEER

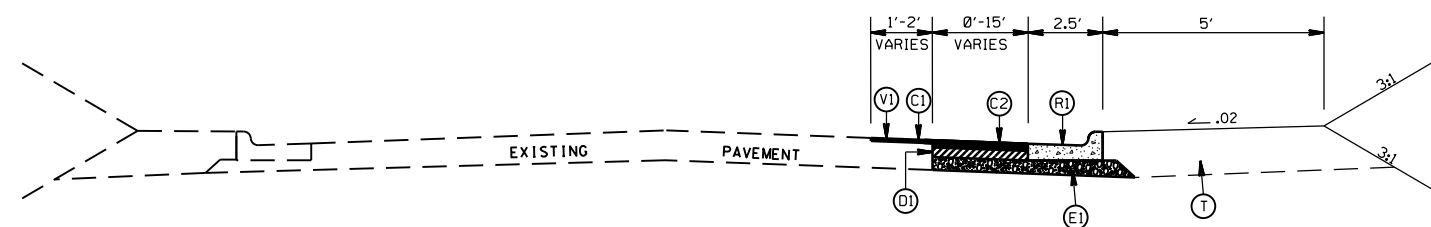
STATE	PROJECT NO.	SHEET NO.	TOTAL SHEETS
N.C.	3610.3.07	2	
F.A. PROJECT NO.			



TYPICAL SECTION NO. 2
 STA. 13+12.18 TO 13+99.64 -L-
 STA. 13+44.79 TO 13+10.17 -Y-

PAVEMENT SCHEDULE

(C1)	PROP. APPROX. 1½" ASPHALT CONC. SURFACE COURSE, TYPE S9.5C, AT AN AVERAGE RATE OF 168 LBS. PER SQ. YD.
(C2)	PROP. APPROX. 3" ASPHALT CONC. SURFACE COURSE, TYPE S9.5C, AT AN AVERAGE RATE OF 168 LBS. PER SQ. YD. IN EACH OF TWO LAYERS.
(D1)	PROP. APPROX. 4" ASPHALT CONC. INTERMEDIATE COURSE, TYPE I19.0C, AT AN AVERAGE RATE OF 456 LBS. PER SQ. YD.
(E1)	PROP. APPROX. 5.5" ASPHALT CONC. BASE COURSE, TYPE B25.0C, AT AN AVERAGE RATE OF 627 LBS. PER SQ. YD.
(R1)	PROP. 2'-6" CURB & GUTTER
(R2)	PROP. 4" CONC. SIDEWALK
(T)	EARTH MATERIAL
(V1)	MILLING ASPHALT PAVEMENT, 1.5" IN DEPTH



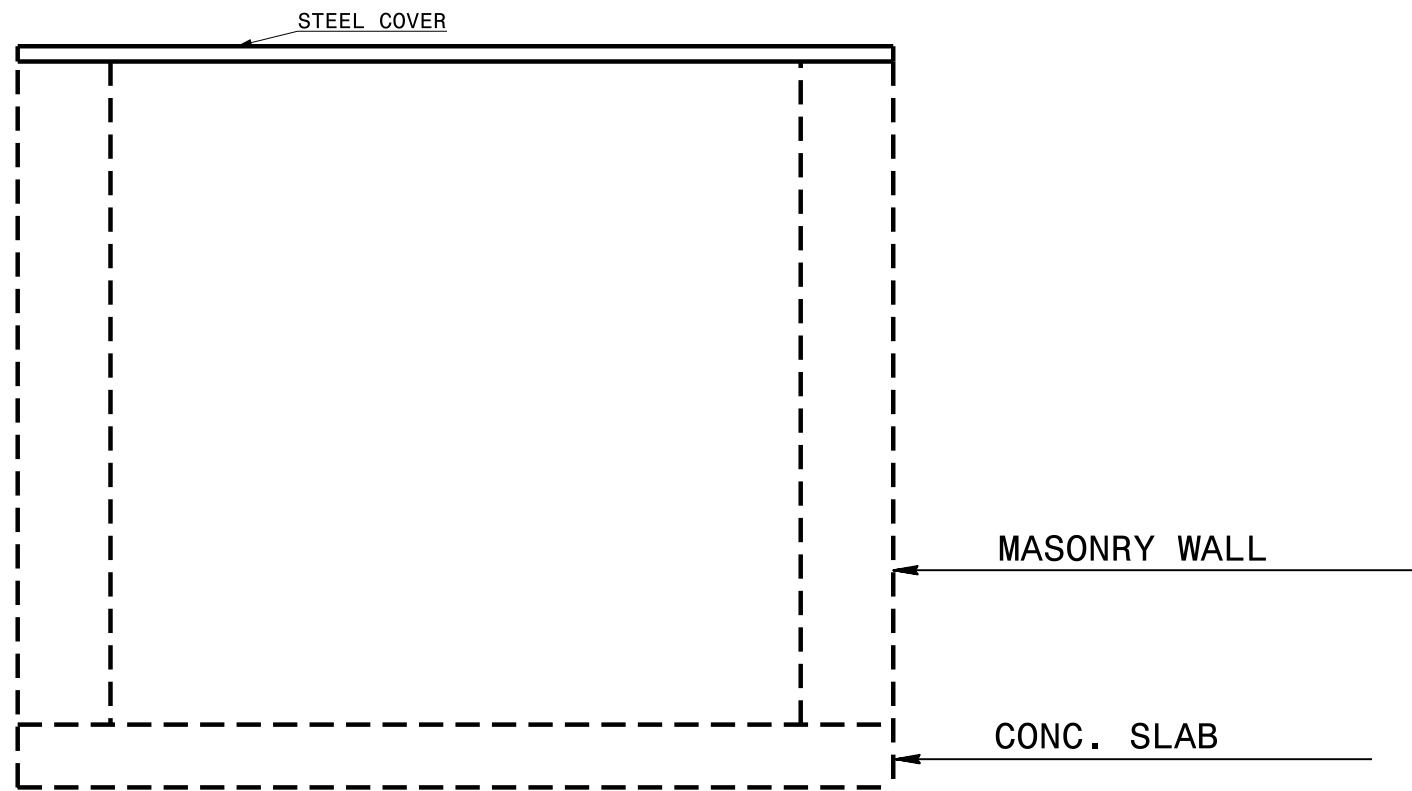
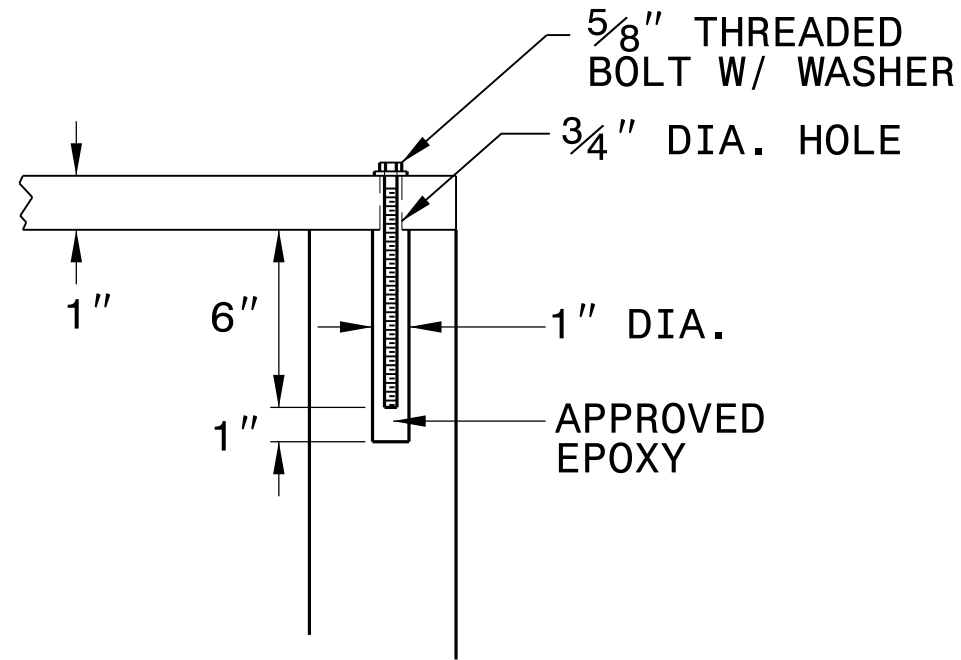
TYPICAL SECTION NO. 1
 STA. 12+70.86 TO 13+12.18 -L-
 STA. 13+10.17 TO 12+16.05 -Y-

RADIUS IMPROVEMENTS ON
 US 74 AND WHITE ST.
 MARSHVILLE, UNION COUNTY

SCALE	r=50'
DATE	5-2015
DWG. BY	JDH
DESIGN BY	JDH
APPROVED	RWB



REVISIONS	



GENERAL NOTES:

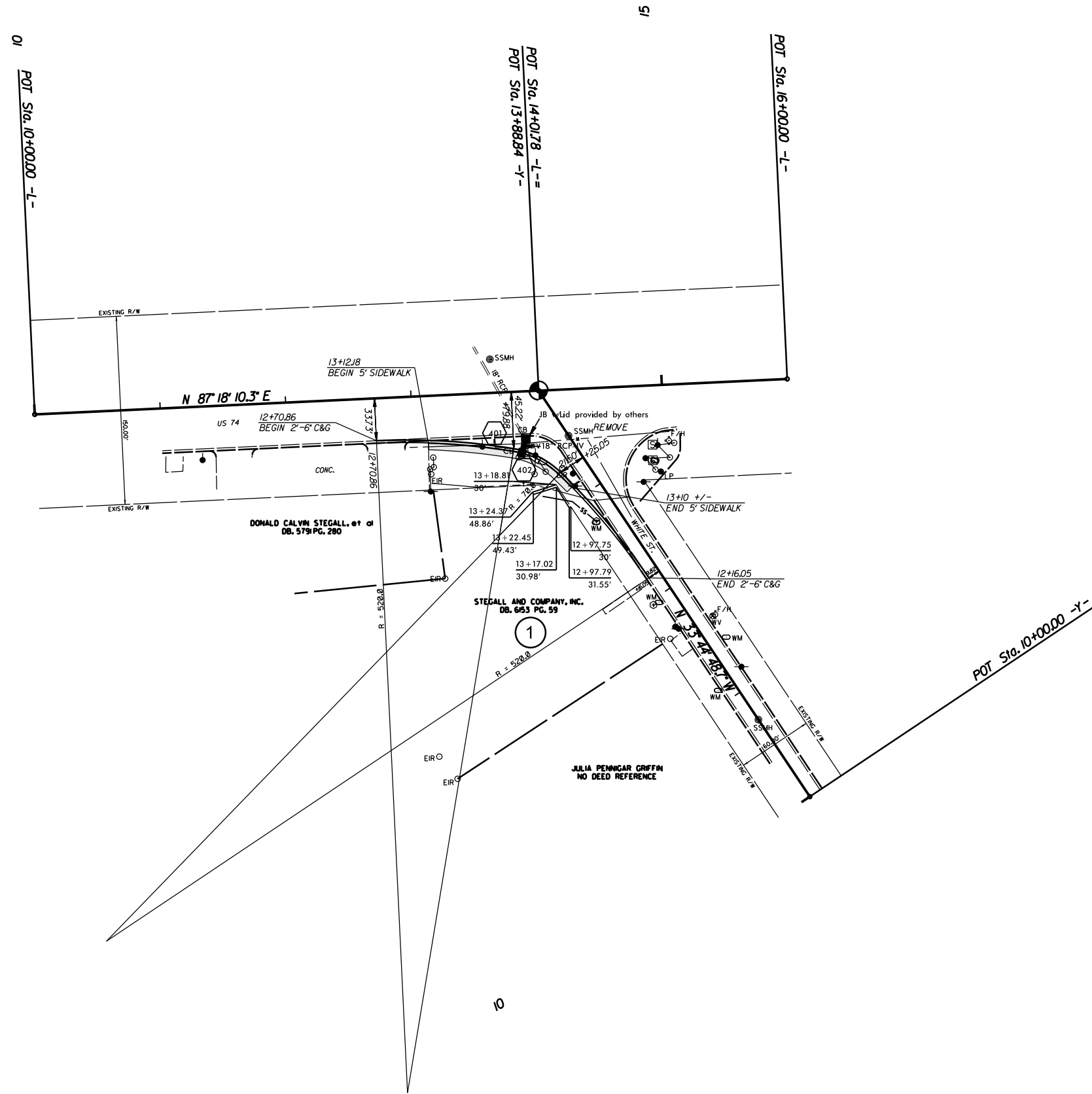
PLACE ANCHOR BOLTS IN ALL 4 CORNERS OF THE DRAINAGE STRUCTURE

ADD ANCHOR BOLTS IN THE MIDDLE OF WALLS AS DIRECTED BY THE ENGINEER

CONTRACT STANDARDS & DEVELOPMENT UNIT STANDARDS AND SPECIAL DESIGN Office 919-707-6950 FAX 919-250-4119	
DETAIL TO CONVERT EXISTING DROP INLET OR CATCH BASIN TO TBJB WITH STEEL PLATE	
ORIGINAL BY: _____	DATE: _____
MODIFIED BY: _____	DATE: _____
CHECKED BY: _____	DATE: _____
FILE SPEC.: _____	

5/14/99
 25:00X 2015 U3a22
 .jsharward
 A:\DIB\VC\A027126
 \US74\white.st\Convert DI or CB to TBJB with Steel Cover.dgn

STATE	PROJECT NO.	SHEET NO.	TOTAL SHEETS
N.C.	3610.3.07	4	
F.A. PROJECT NO.			



RADIUS IMPROVEMENTS ON
US 74 AND WHITE ST.
MARSHVILLE, UNION COUNTY

SCALE $r=50'$
DATE 7/14
DWG. BY JDH
DESIGN BY JDH
APPROVED RWB



REVISIONS
