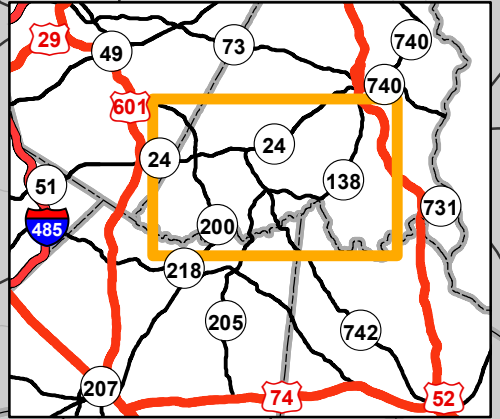
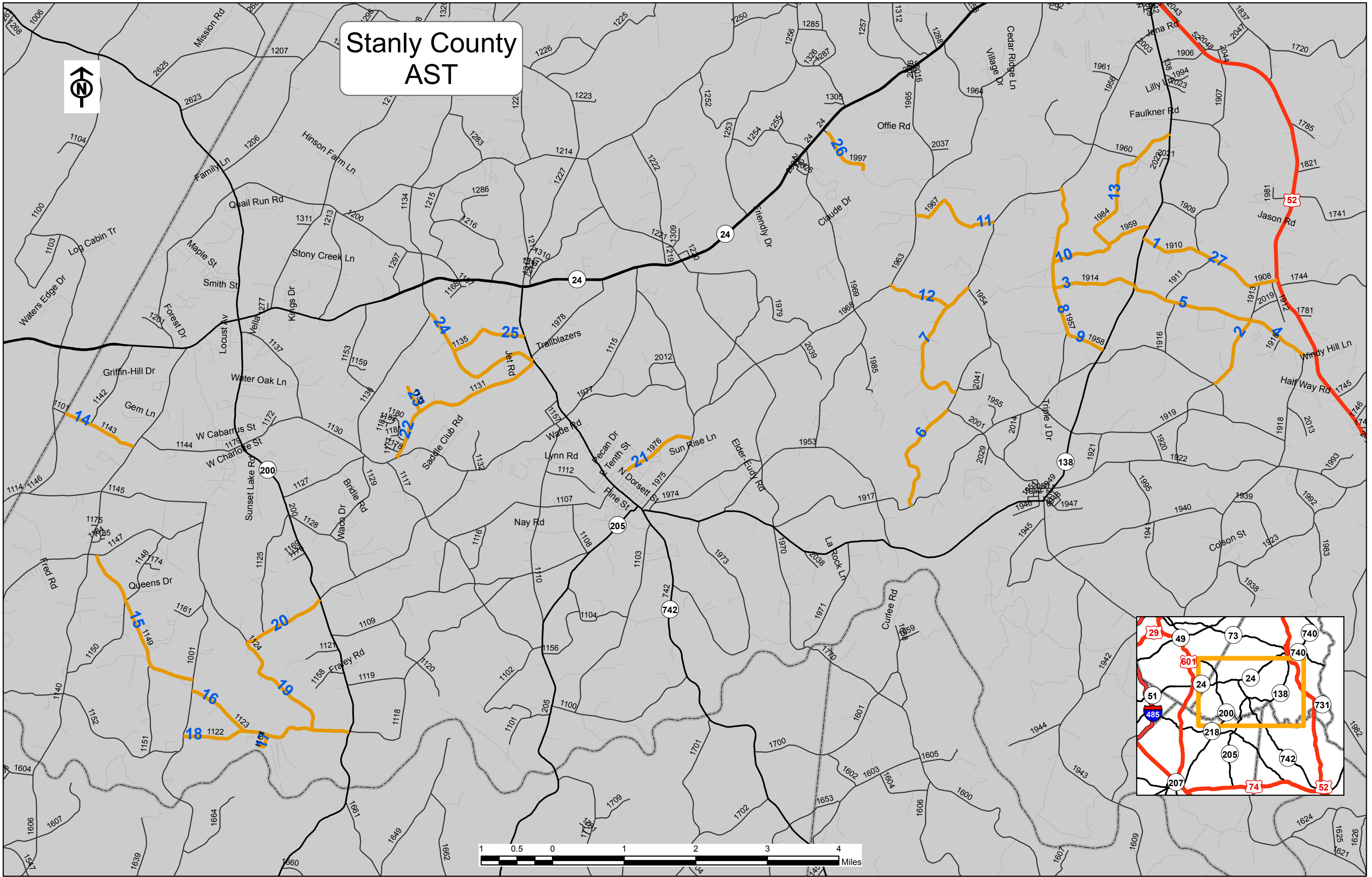


PROJECT NO.	SHEET NO.	TOTAL NO.
2016CPT.10.01.20842.1	1	4

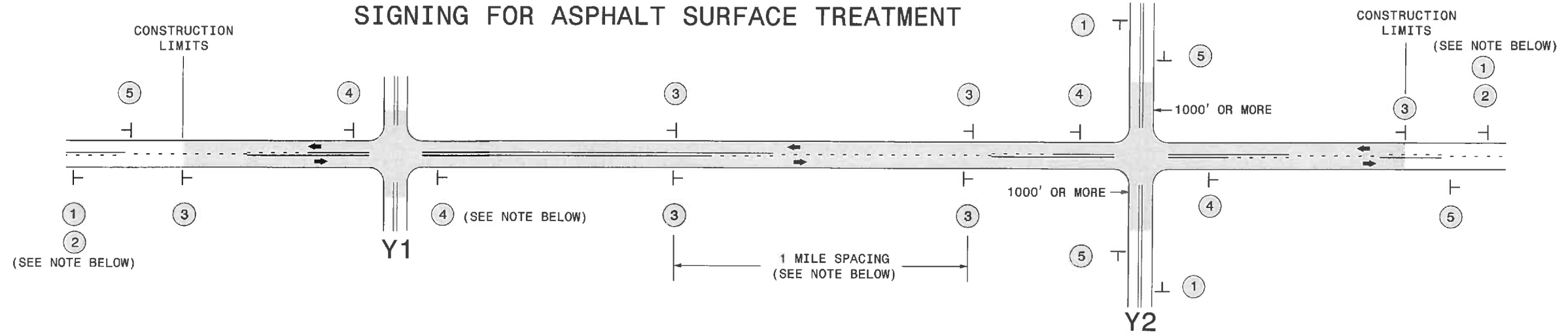
SUMMARY OF QUANTITIES

PROJECT NO	COUNTY	MAP NO	ROUTE	DESCRIPTION	LANES	FINAL SURFACE TESTING REQUIRE	WARM MIX ASPHALT REQUIRE	LENGTH MI	WIDTH FT	ASPHALT SURFACE TREATMENT, DOUBLE SEAL SY	EMULSION FOR ASPHALT SURFACE TREATMENT GAL	BLOTTING SAND TON	WORK ZONE ADVANCE/GENERAL WARNING SIGNING SF	TEMPORARY TRAFFIC CONTROL LS
2016CPT.10.01.20842.1	Stanly	1	MAULDIN RD. (SR 1910)	FROM NC 138 TO PORTER RD. (SR 1908)	2	NO	NO	0.87	18	9,187	5,052		56	
TOTAL FOR MAP NO. 1								0.87		9,187	5,052		56	
2016CPT.10.01.20842.1	Stanly	2	SWARRINGEN RD. (SR 1913)	FROM MATT NEIL RD (SR 1914 TO SILVER SPRINGS RD (SR 1917)	2	NO	NO	1.07	20	12,555	6,905		112	
TOTAL FOR MAP NO. 2								1.07		12,555	6,905		112	
2016CPT.10.01.20842.1	Stanly	3	GEORGE RD (SR 1914)	FROM NC 138 TO TYSON RD (SR 1957)	2	NO	NO	1.17	20	13,728	7,550		112	
TOTAL FOR MAP NO. 3								1.17		13,728	7,550		112	
2016CPT.10.01.20842.1	Stanly	4	MATT NEIL RD (SR 1914)	FROM COTTONVILLE RD (SR 1918) TO SWARRINGEN RD (SR 1913)	2	NO	NO	0.92	22	11,874	6,531		56	
TOTAL FOR MAP NO. 4								0.92		11,874	6,531		56	
2016CPT.10.01.20842.1	Stanly	5	COOPER RD (SR 1914)	FROM SWARRINGEN RD (SR 1913) TO NC 138	2	NO	NO	1.74	22	22,458	12,352		176	
TOTAL FOR MAP NO. 5								1.74		22,458	12,352		176	
2016CPT.10.01.20842.1	Stanly	6	PRINCE RD (SR 1954)	FROM BETHLEHEM CH RD (SR 1917) TO OLD AQUADALE RD (SR 2001)	2	NO	NO	1.72	18	18,163	9,990		176	
TOTAL FOR MAP NO. 6								1.72		18,163	9,990		176	
2016CPT.10.01.20842.1	Stanly	7	REAP RD (SR 1956)	FROM OLD AQUADALE RD (SR 1954) TO OLD AQUADALE RD (SR 1954)	2	NO	NO	2.15	18	22,704	12,487		176	
TOTAL FOR MAP NO. 7								2.15		22,704	12,487		176	
2016CPT.10.01.20842.1	Stanly	8	TYSON RD (SR 1957)	FROM OLD AQUADALE RD (SR 1956) TO TYSON RD (SR 1958)	2	NO	NO	2.13	18	22,493	12,371		120	
TOTAL FOR MAP NO. 8								2.13		22,493	12,371		120	
2016CPT.10.01.20842.1	Stanly	9	TYSON RD (SR 1958)	FROM CROSS RD (SR 1957) TO NC 138	2	NO	NO	0.58	16	5,444	2,994		56	
TOTAL FOR MAP NO. 9								0.58		5,444	2,994		56	
2016CPT.10.01.20842.1	Stanly	10	WESTERN RD (SR 1959)	FROM TYSON RD (SR 1957) TO NC 138	2	NO	NO	1.49	20	17,483	9,616		168	
TOTAL FOR MAP NO. 10								1.49		17,483	9,616		168	
2016CPT.10.01.20842.1	Stanly	11	SIDES RD (SR 1967)	FROM ST. MARTIN RD (SR 1963) TO OLD AQUADALE RD (SR 1956)	2	NO	NO	1.4	21	17,248	9,486		176	
TOTAL FOR MAP NO. 11								1.4		17,248	9,486		176	
2016CPT.10.01.20842.1	Stanly	12	HARTSELL RD (SR 1968)	FROM ST. MARTIN RD. (SR 1963) TO REAP RD (SR 1956)	2	NO	NO	0.59	20	6,923	3,807		104	
TOTAL FOR MAP NO. 12								0.59		6,923	3,807		104	
2016CPT.10.01.20842.1	Stanly	13	UNION GROVE RD (SR 1984)	FROM NC 138 TO WESTERN BLVD. (SR 1959)	2	NO	NO	2.19	20	25,696	14,132		176	
TOTAL FOR MAP NO. 13								2.19		25,696	14,132		176	
2016CPT.10.01.20842.1	Stanly	14	NANCE RD (SR 1143)	FROM THE CABARRUS COUNTY LINE TO RENEE FORD RD (SR 1140)	2	NO	NO	1.07	18	11,299	6,215		56	
TOTAL FOR MAP NO. 14								1.07		11,299	6,215		56	
2016CPT.10.01.20842.1	Stanly	15	TALLEY RD (SR 1149)	FROM POLK FORD RD (SR 1147) TO LOVE MILL RD. (SR 1001)	2	NO	NO	2.39	19	26,641	14,652		214	
TOTAL FOR MAP NO. 15								2.39		26,641	14,652		214	
2016CPT.10.01.20842.1	Stanly	16	HONEYCUTT RD (SR 1123)	FROM LOVE MILL RD (SR 1001) TO ROCK HOLE RD (SR 1122)	2	NO	NO	0.95	18	10,032	5,518		104	
TOTAL FOR MAP NO. 16								0.95		10,032	5,518		104	
2016CPT.10.01.20842.1	Stanly	17	RIVER HEIGHTS RD (SR 1164)	FROM ROCK HOLE RD (SR 1122) TO THE DEAD END	2	NO	NO	0.26	17	2,593	1,426		56	
TOTAL FOR MAP NO. 17								0.26		2,593	1,426		56	
2016CPT.10.01.20842.1	Stanly	18	ROCK HOLE RD (SR 1122)	FROM LOVE MILL RD (SR 1001) TO NC 200	2	NO	NO	2.43	20	28,512	15,682		182	
TOTAL FOR MAP NO. 18								2.43		28,512	15,682		182	
2016CPT.10.01.20842.1	Stanly	19	RUSHING RD (SR 1124)	FROM LOVE MILL RD (SR 1001) TO OAK GROVE RD (SR 1115)	2	NO	NO	1.71	20	20,064	11,035		120	
TOTAL FOR MAP NO. 19								1.71		20,064	11,035		120	
2016CPT.10.01.20842.1	Stanly	20	OAK GROVE RD (SR 1115)	FROM RUSHING RD (SR 1124) TO NC 200	2	NO	NO	1.19	22	15,359	8,447		56	
TOTAL FOR MAP NO. 20								1.19		15,359	8,447		56	
2016CPT.10.01.20842.1	Stanly	21	E. EIGHT ST. (SR 1976)	FROM N. CITY LIMITS OF OAKBORO TO ST. MARTIN RD (SR 1975)	2	NO	NO	1.07	18	11,299	6,215		112	
TOTAL FOR MAP NO. 21								1.07		11,299	6,215		112	
2016CPT.10.01.20842.1	Stanly	22	HATLEY BURRIS RD (SR 1131)	FROM BIG LICK RD (SR 1130) TO NC 205	2	NO	NO	2.53	20	29,685	16,327		182	
TOTAL FOR MAP NO. 22								2.53		29,685	16,327		182	
2016CPT.10.01.20842.1	Stanly	23	TRAVIS RD (SR 1133)	FROM HATLEY BURRIS RD (SR 1131) TO THE DEAD END	2	NO	NO	0.4	18	4,224	2,323		56	
TOTAL FOR MAP NO. 23								0.4		4,224	2,323		56	
2016CPT.10.01.20842.1	Stanly	24	HILL TOP RD (SR 1134)	FROM NC 205 TO PLESS MILL RD (SR 1136)	2	NO	NO	2.05	20	24,053	13,229		176	
TOTAL FOR MAP NO. 24								2.05		24,053	13,229		176	
2016CPT.10.01.20842.1	Stanly	25	PEACH TREE RD (SR 1135)	FROM NC 205 TO HILL TOP RD (SR 1134)	2	NO	NO	1.1	20	12,907	7,099		120	
TOTAL FOR MAP NO. 25								1.1		12,907	7,099		120	
2016CPT.10.01.20842.1	Stanly	26	TEETER RD (SR 1997)	FROM THE PAVT JOINT AT NC 24/27 TO THE DEAD END	2	NO	NO	0.83	20	9,739	5,356		112	
TOTAL FOR MAP NO. 26								0.83		9,739	5,356		112	
2016CPT.10.01.20842.1	Stanly	27	PORTER RD (SR 1908)	FROM MAULDIN RD (SR 1910) TO US 52	2	NO	NO	1.25	18	13,200	7,260		120	
TOTAL FOR MAP NO. 27								1.25		13,200	7,260		120	
TOTAL FOR PROJ NO. 2016CPT.10.01.20842.1								37.25		425,563	234,057		3,330	
GRAND TOTAL								37.25		425,563	234,057	20.00	3,330	1

Stanly County AST



SIGNING FOR ASPHALT SURFACE TREATMENT



LEGEND	
	STATIONARY SIGN
←	DIRECTION OF TRAFFIC FLOW

MAINLINE (-L-) SIGNING

-Y- LINE SIGNING

SIGNING NOTES AND PLACEMENT PER DIRECTION	1	 <small>W20-1 48" X 48"</small>	<p>PLACE 1000' PRIOR TO BEGINNING OF CONSTRUCTION LIMITS. ONLY USED ON -Y- LINES IF RESURFACING LIMITS EXTEND 1000' ALONG -Y- LINE.</p> <p>#2 SIGN ONLY USED WHEN RESURFACING LIMITS ARE 2 OR MORE MILES IN LENGTH. ROUND UP TO NEXT WHOLE NUMBER. (NO FRACTIONAL OR DECIMAL NUMBERS)</p>
	2	 <small>W7-30P 24" X 18"</small>	
	3	 <small>W8-7 48" X 48"</small> <small>SP 48" X 48"</small>	<p>ALTERNATE THE FOLLOWING TWO SIGNS:</p> <p>STARTING WITH "LOOSE GRAVEL" (W8-7) FOLLOWED BY "UNMARKED PAVEMENT".</p> <p>PLACE INITIALLY AT THE CONSTRUCTION LIMITS AND SPACED 1 MILE APART THEREAFTER. IF NO -Y- LINES EXIST, PLACE 2ND SET 1/2 MILE FROM THE CONSTRUCTION LIMITS AND THEN SPACE 1 MILE THEREAFTER.</p>
	4	 <small>SP 13106 48" X 48"</small>	<p>THESE ARE FOR -Y- LINES THAT ARE "THROUGH" ROADWAYS. DEAD END AND SUBDIVISION ROADS ARE NOT "THROUGH" ROADWAYS. INSTALL 500' +/- FROM EACH -Y- LINE APPROACH AS SHOWN ABOVE. FOR MULTIPLE -Y- LINES THAT ARE SEPARATED BY 0.25 MILES OR LESS, TREAT AS A SINGLE UNIT AND INSTALL WITHIN 500' OF EACH APPROACH. A MAXIMUM OF 2 SIGN SETS PER MILE. DO NOT INSTALL WHEN -Y- LINES ARE WITHIN 0.5 MILES FROM "END ROAD WORK" SIGN.</p>
	5	 <small>G20-2 A 48" X 24"</small>	<p>PLACE 500' FOLLOWING THE END OF CONSTRUCTION LIMITS.</p>

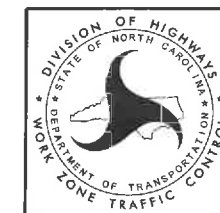
NO REQUIRED STATIONARY SIGNING FOR THE FOLLOWING -Y- LINE CONDITIONS:

- 1) LESS THAN 1000' OF RESURFACING ALONG -Y- LINE
- 2) SUBDIVISION ROADS
- 3) DEAD END ROADS

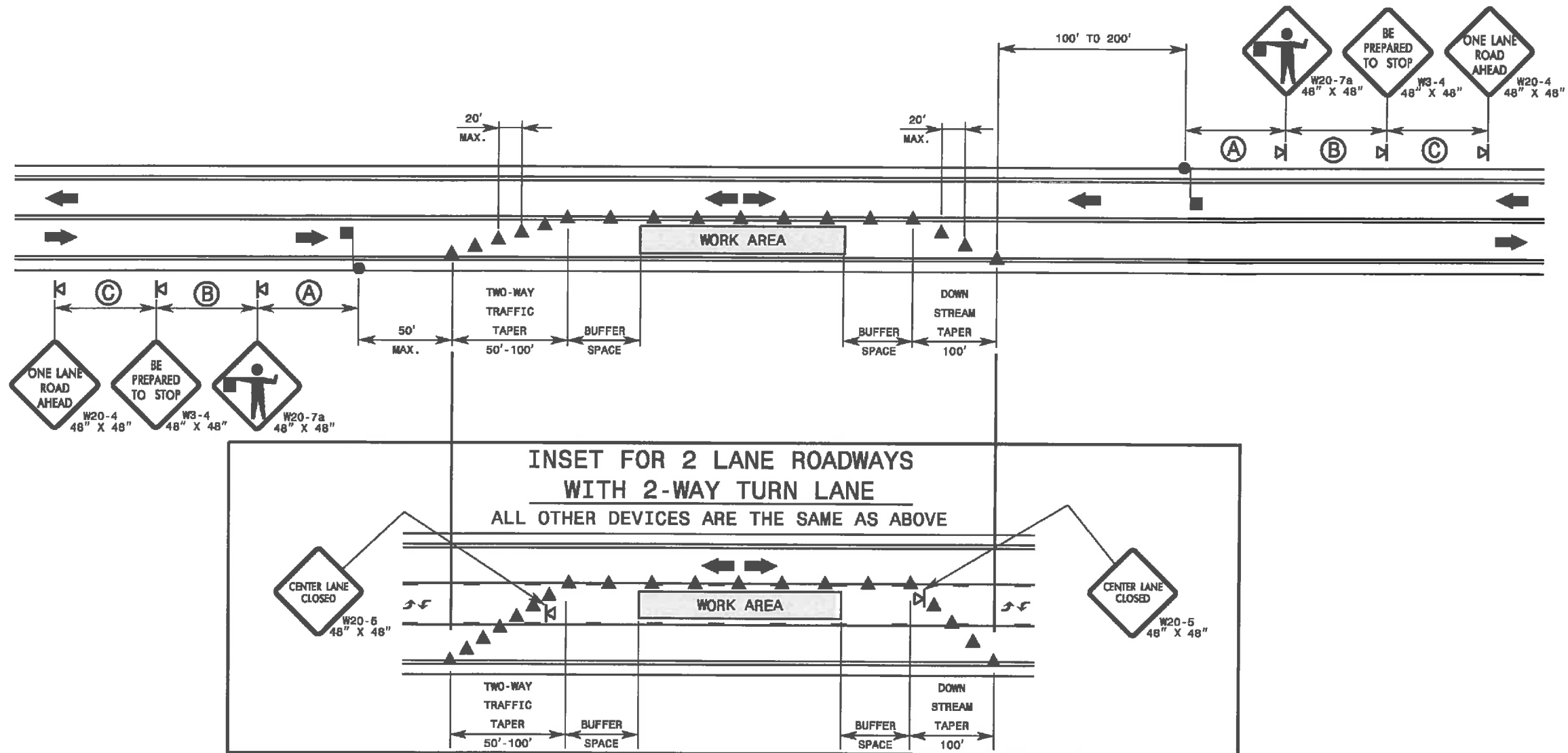
WHEN PAVING/CONSTRUCTION ACTIVITIES PROCEED ACROSS AN UNSIGNED -Y- LINE, ADVANCE WARNING PORTABLE SIGNS SHALL BE USED ALONG THE -Y- LINE AS SHOWN BELOW. REMOVE UPON COMPLETION OF WORK.



PLACED 500' IN ADVANCE OF FLAGGER. PLACED 250' IN ADVANCE OF FLAGGER.



ADVANCE WARNING SIGNS
FOR
ASPHALT SURFACE TREATMENTS
2 LANE ROADWAYS



GENERAL NOTES FOR FLAGGER OPERATIONS

- 1- REFER TO STD. 1101.11 SHEET 4 FOR SIGN SPACING.
- 2- INSTALL LANE CLOSURES WITH THE TRAFFIC FLOW, BEGINNING WITH DEVICES ON THE UPSTREAM SIDE OF TRAFFIC.
- 3- REMOVE LANE CLOSURES AGAINST THE TRAFFIC FLOW, BEGINNING WITH DEVICES ON THE DOWNSTREAM SIDE OF TRAFFIC.
- 4- PLACE CONES THRU THE WORK AREA AT THE MAXIMUM SPACING EQUAL IN FEET TO 2 TIMES THE POSTED SPEED LIMIT.
- 5- EXTEND LANE CLOSURES AT THE BUFFER SPACE SUCH THAT STOPPING SIGHT DISTANCE IS PROVIDED TO THE FLAGGER (REFER TO STD. 1101.11 SHEET 2).
- 6- DO NOT STOP TRAFFIC IN ANY ONE DIRECTION FOR MORE THAN 5 MINUTES AT A TIME.
- 7- DRUMS OR SKINNY-DRUMS MAY BE USED IN LIEU OF CONES. REFER TO ROADWAY STANDARD DRAWING 1180.01 FOR SKINNY-DRUM REQUIREMENTS.
- 8- USE FLAGGERS TO CONTROL TRAFFIC AT INTERSECTIONS AFFECTED BY THE LANE CLOSURE. SUPPLEMENT FLAGGERS LOCATED AT INTERSECTIONS WITH FLAGGER AHEAD SIGNS (W20-7a) PLACED APPROXIMATELY 250 FT. IN ADVANCE OF THE FLAGGER. FOR SIGNALIZED INTERSECTIONS PLACE SIGNALS IN THE FLASH MODE AND RECOMMEND THE USE OF LAW ENFORCEMENT.
- 9- REFER TO 2009 MUTCD, CHAPTER 6, FOR FLAGGER CONTROL, REQUIREMENTS, AND PROCEDURES.
- 10- DO NOT EXCEED A 1 MILE LANE CLOSURE LENGTH UNLESS OTHERWISE SHOWN IN THE TMP OR AS DIRECTED BY THE ENGINEER.

GENERAL NOTES FOR PILOT CAR OPERATIONS

- 1- USE PILOT CARS WHEN DIRECTED BY THE ENGINEER.
- 2- IF ROADWAY WIDTH IS LESS THAN 22 FEET (EOP TO EOP), CONES MAY NOT BE REQUIRED ALONG WORK AREA, AND AT THE DISCRETION OF THE ENGINEER, CONES MAY BE OMITTED ALONG THE WORK AREA IF USING A PILOT CAR.
- 3- CONES ARE ALWAYS REQUIRED IN THE UPSTREAM AND DOWNSTREAM TAPERS.
- 4- MOUNT SIGN G20-4 "PILOT CAR FOLLOW ME" AT A CONSPICUOUS POSITION ON THE REAR OF THE PILOT VEHICLE.
- 5- DO NOT INSTALL MORE THAN ONE (1) MILE OF LANE CLOSURE, MEASURED FROM THE BEGINNING OF THE MERGE TAPER TO THE END OF THE LANE CLOSURE.
- 6- ADVISE RESIDENTS AND BUSINESSES WITHIN THE LANE CLOSURE LIMITS ABOUT METHODS OF SAFE EGRESS AND INGRESS FROM DRIVEWAYS DURING FLAGGING AND PILOT CAR OPERATIONS.

LEGEND

- FLAGGER
- CONE
- PORTABLE SIGN
- DIRECTION OF TRAFFIC FLOW