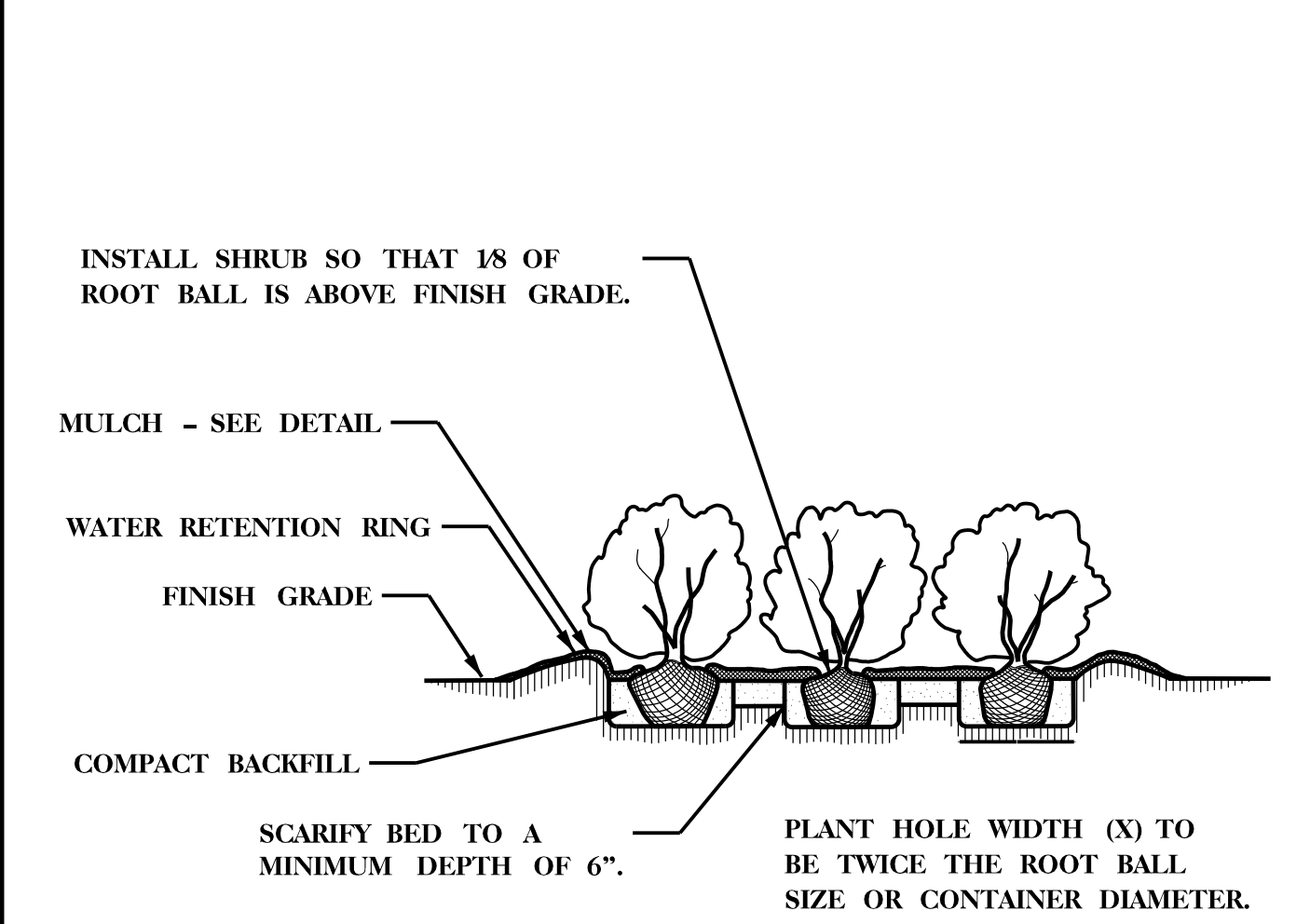
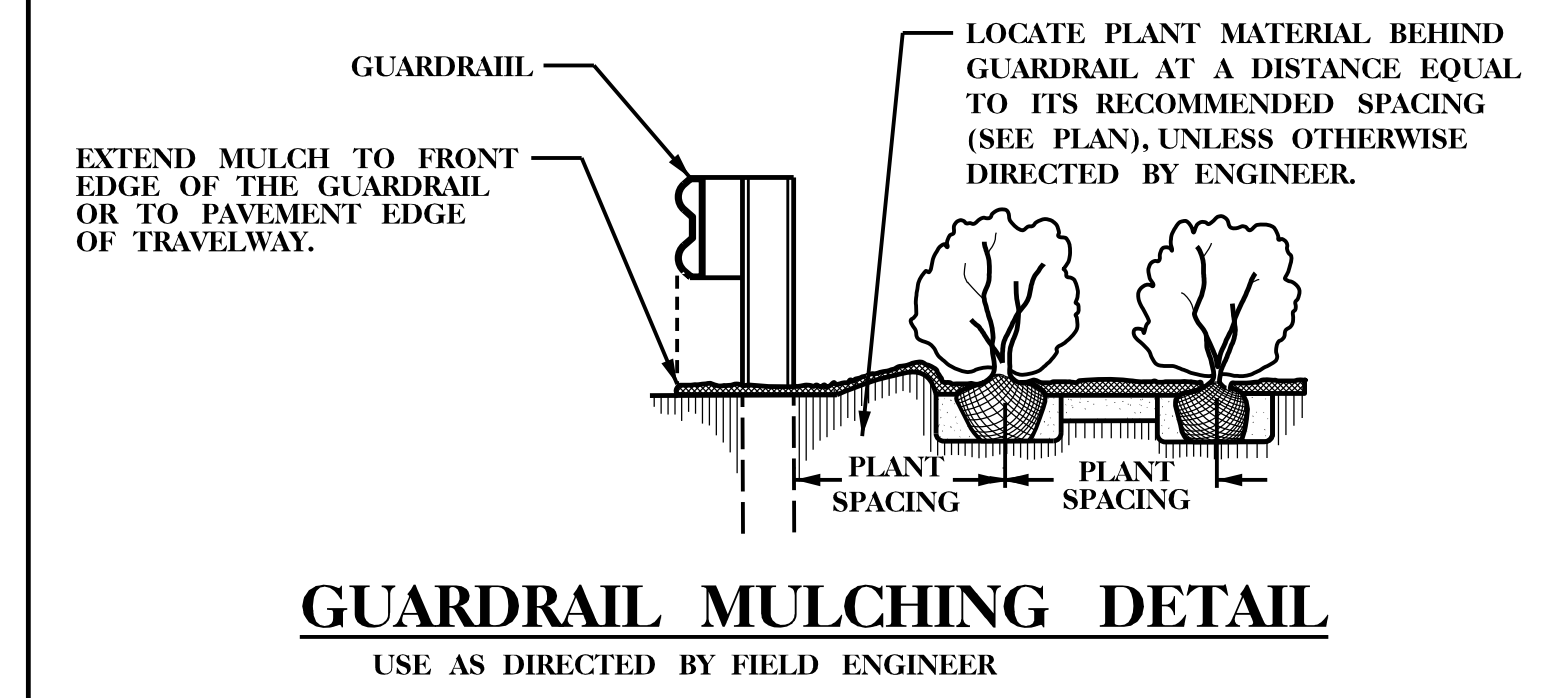
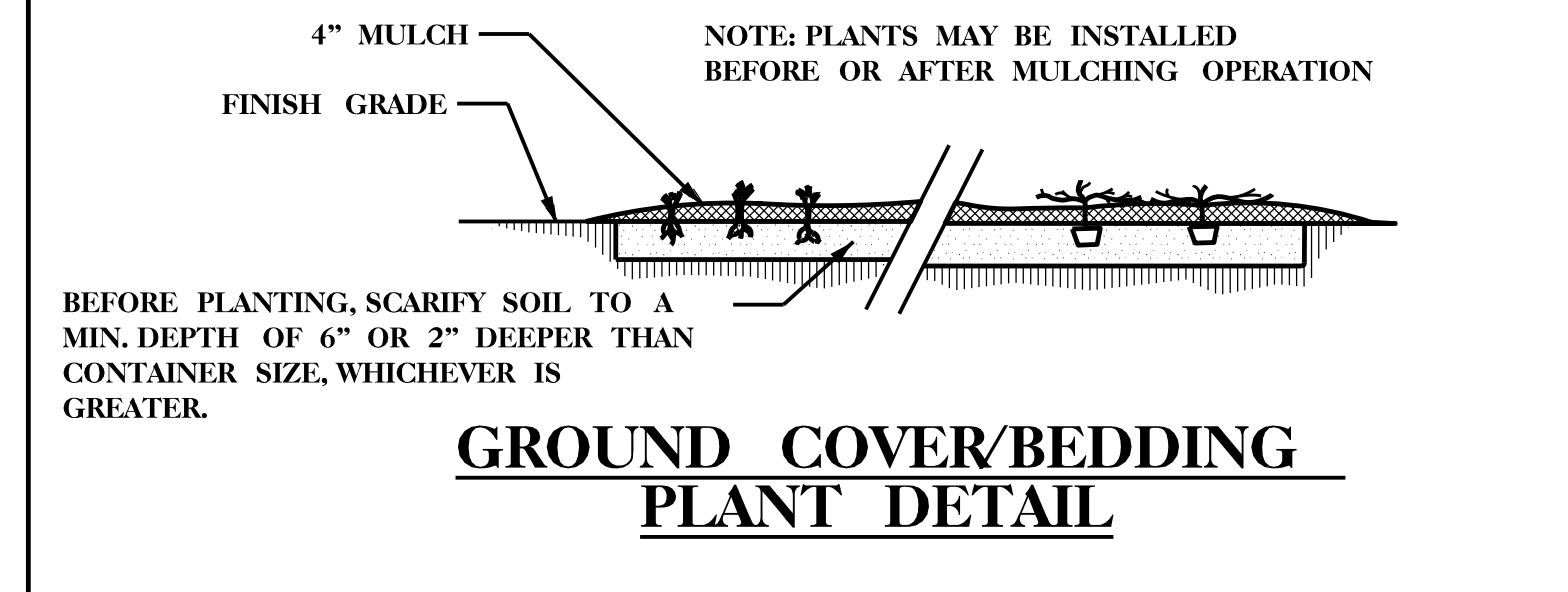
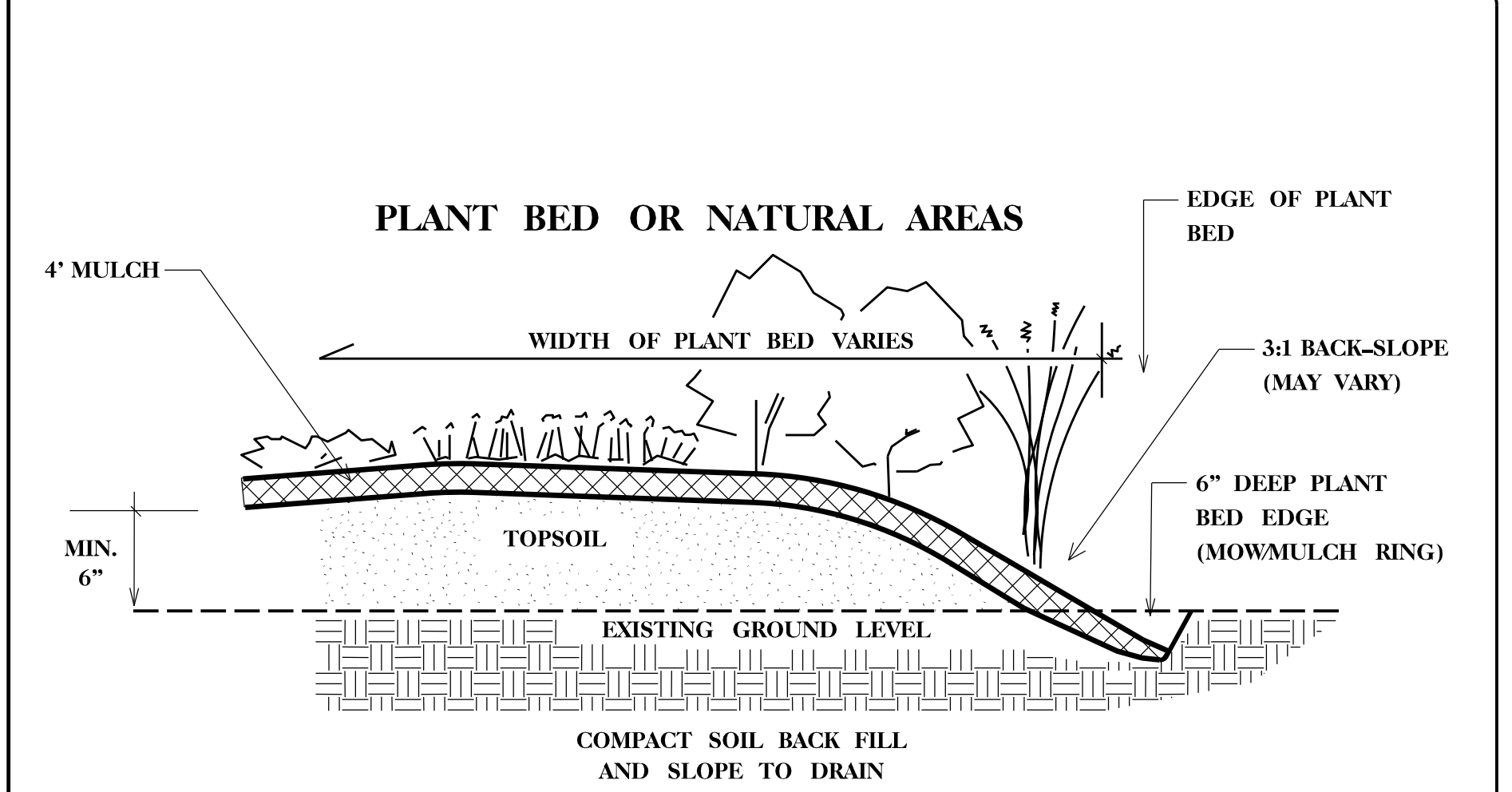


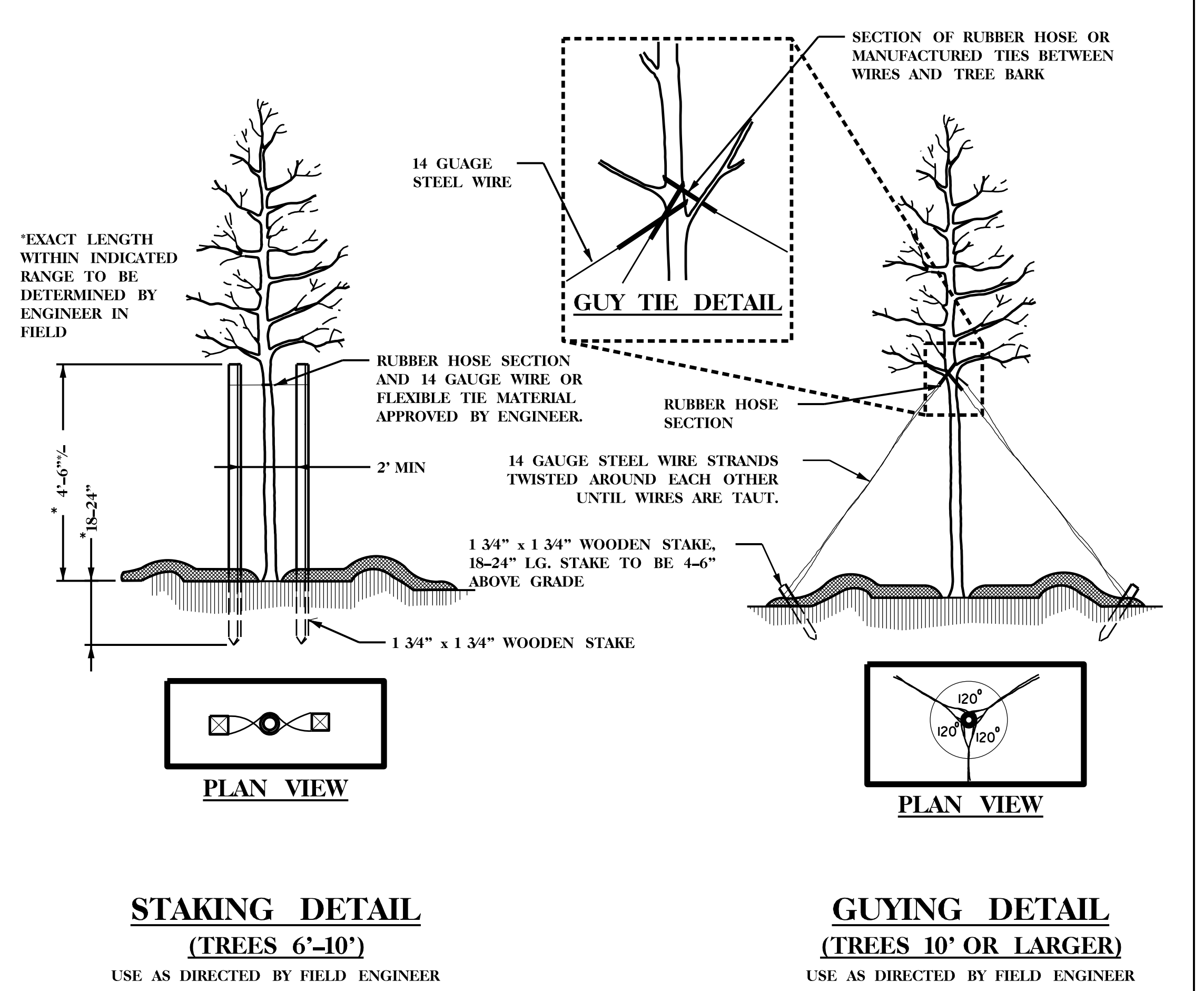
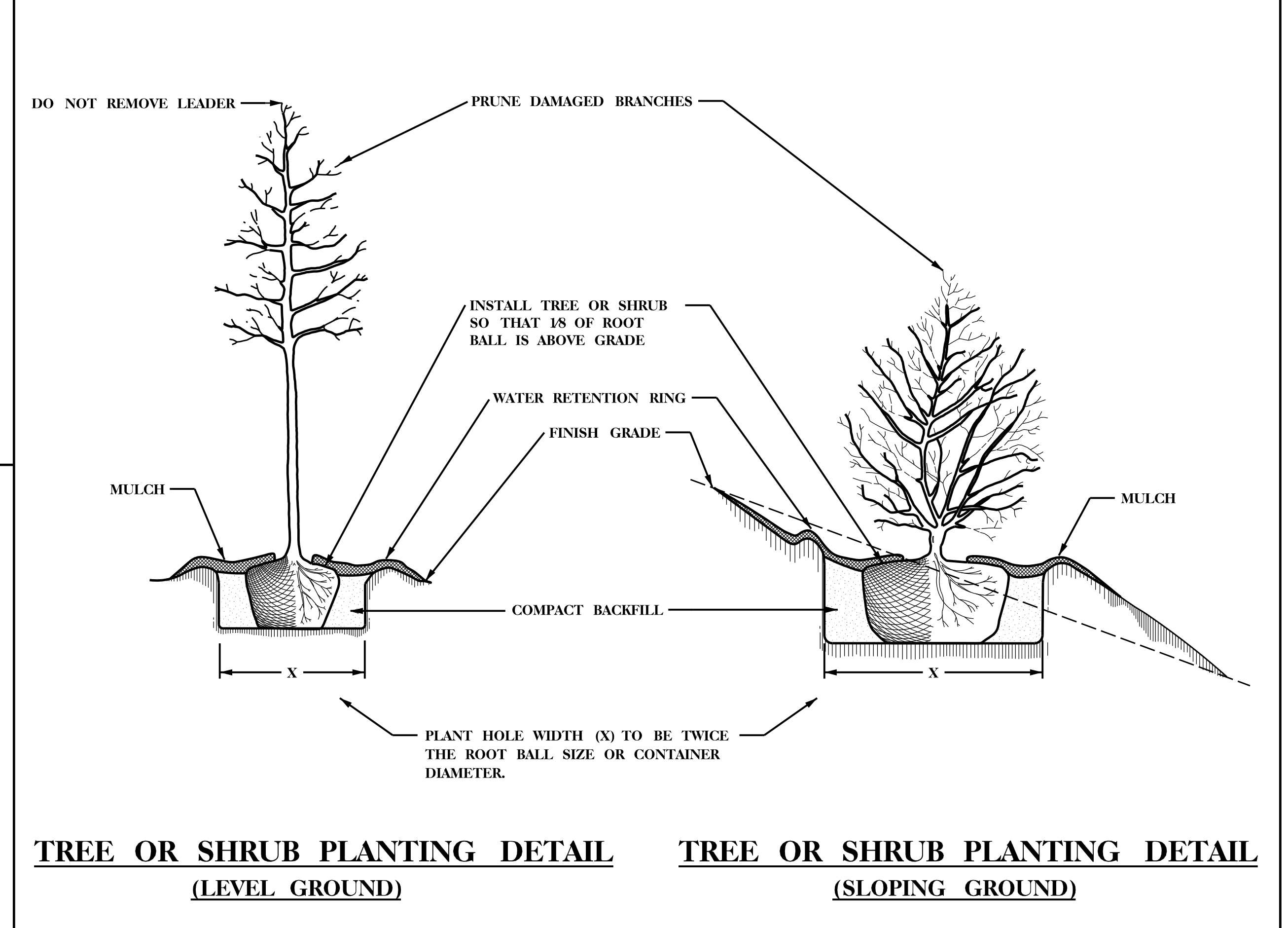
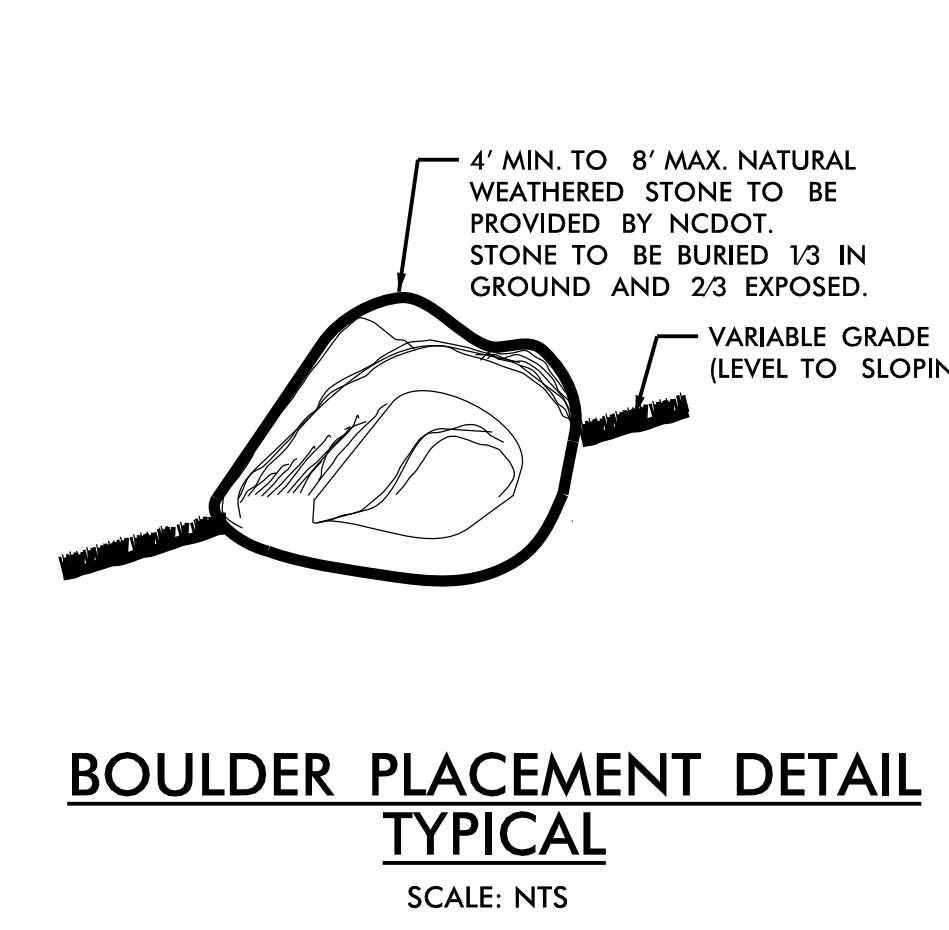
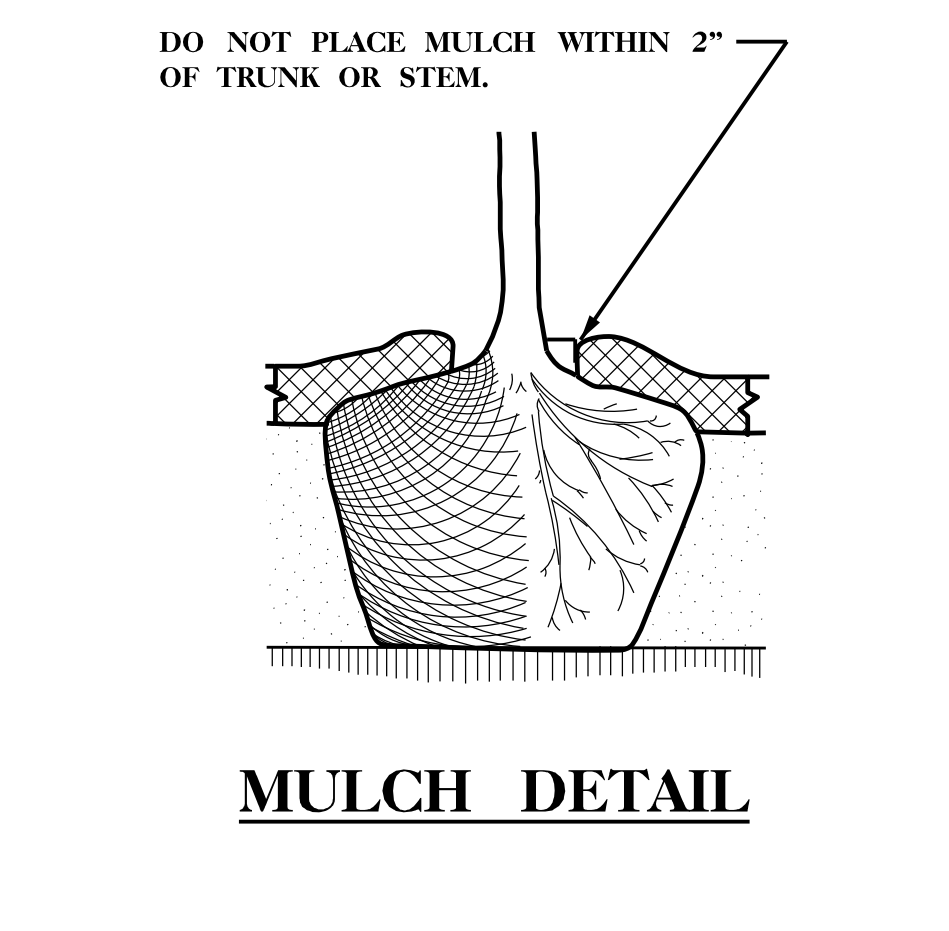
- NOTES:**
- SCHEDULE FOR PLANT HOLE SIZE: PLANT HOLE WIDTH (X) TO BE TWICE THE ROOT BALL SIZE OR CONTAINER DIAMETER.
 - SEE STANDARD SPECIFICATIONS FOR PLANT BED FUMIGATION AND HERBICIDAL TREATMENT.
 - APPLY FERTILIZER AT PLANTING TIME IN THE FORM OF A SLOW RELEASE PELLET OR TABLET. APPLY AT RATE RECOMMENDED BY MANUFACTURER. BOTH RATE AND FORMULATION MUST BE APPROVED BY FIELD ENGINEER PRIOR TO APPLICATION.
 - REMOVE WIRE BASKET AND FOLD BURLAP BACK FROM TOP OF ROOT BALL BEFORE BACKFILLING IS COMPLETE.
 - ALL PRUNING TO FOLLOW STANDARD ARBORICULTURAL PRACTICES AS SPECIFIED BY INTERNATIONAL SOCIETY OF ARBORICULTURE.
 - DO NOT ATTEMPT TO STRAIGHTEN A TREE THAT HAS BEEN PLANTED AT AN ANGLE WITH THE USE OF STAKING OR GUYING. DIG TREE AND REPLANT TO UPRIGHT POSITION.



SHRUB BED PLANTING DETAIL



PLANT BED EDGE DETAIL



NCDOT - ROADSIDE ENVIRONMENTAL UNIT
 LANDSCAPE DESIGN & DEVELOPMENT
 1557 MAIL SERVICE CENTER RALEIGH NC 27699-1557
 PH: 919-707-2935 FAX: 919-715-2554
 HTTP://WWW.NCDOT.ORG/DOH/OPERATIONS/DP_CHIEF_ENG/ROADSIDE/

I-85 & MALLARD CREEK RD
 MECKLENBURG COUNTY
 TIP #: R-2248E

REV. DESIGNER
 Kyle Cooney

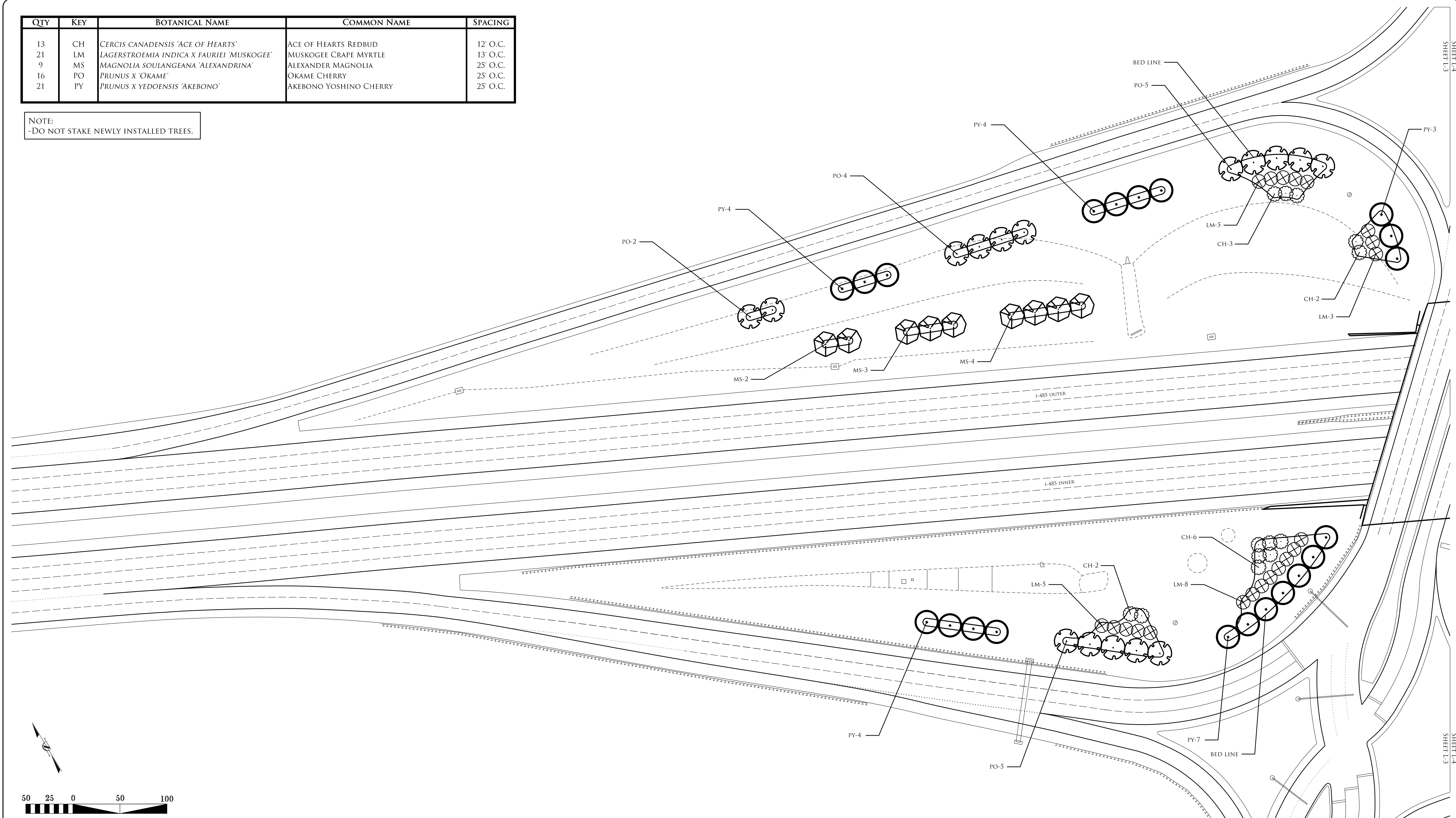
SHEET DESCRIPTION:
 PREL. DESIGN DATE: MARCH 2016
 CHECKED BY & DATE:
 FINAL DESIGN DATE: JUNE 13, 2016

PLANTING DETAILS

T.I.P. # R-2248E
 WBS #
 FED I.D. #
 SHEET NO.: L-2 TOTAL SHEET NO.: 5

| QTY | KEY | BOTANICAL NAME | COMMON NAME | SPACING |
|-----|-----|---|------------------------|----------|
| 13 | CH | CERCIS CANADENSIS 'ACE OF HEARTS' | ACE OF HEARTS REDBUD | 12' O.C. |
| 21 | LM | LAGERSTROEMIA INDICA X FAURIEI 'MUSKOGEE' | MUSKOGEE CRAPE MYRTLE | 13' O.C. |
| 9 | MS | MAGNOLIA SOULANGIANA 'ALEXANDRINA' | ALEXANDER MAGNOLIA | 25' O.C. |
| 16 | PO | PRUNUS X 'OKAME' | OKAME CHERRY | 25' O.C. |
| 21 | PY | PRUNUS X YEDOENSIS 'AKEBONO' | AKEBONO YOSHINO CHERRY | 25' O.C. |

NOTE:
-DO NOT STAKE NEWLY INSTALLED TREES.



NCDOT - ROADSIDE ENVIRONMENTAL UNIT
 LANDSCAPE DESIGN & DEVELOPMENT
 1557 MAIL SERVICE CENTER RALEIGH NC 27699-1557
 PH: 919-707-2935 FAX: 919-715-2554
[HTTP://WWW.NCDOT.ORG/DOH/OPERATIONS/DP_CHIEF_ENG/ROADSIDE/](http://www.ncdot.org/doh/operations/dp_chief_eng/roadside/)

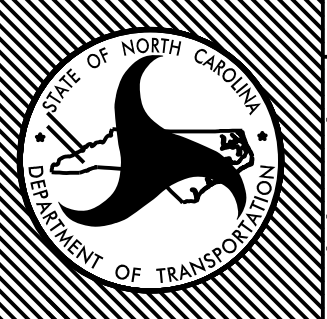
I-85 & MALLARD CREEK RD
 MECKLENBURG COUNTY
 TIP #: R-2248E

REV. DESIGNER
Kyle Cooper

SHEET DESCRIPTION:
 PREL. DESIGN DATE: MARCH 2016
 CHECKED BY & DATE:
 FINAL DESIGN DATE: JUNE 13, 2016

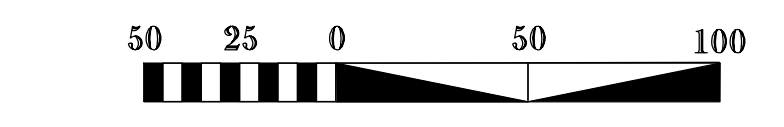
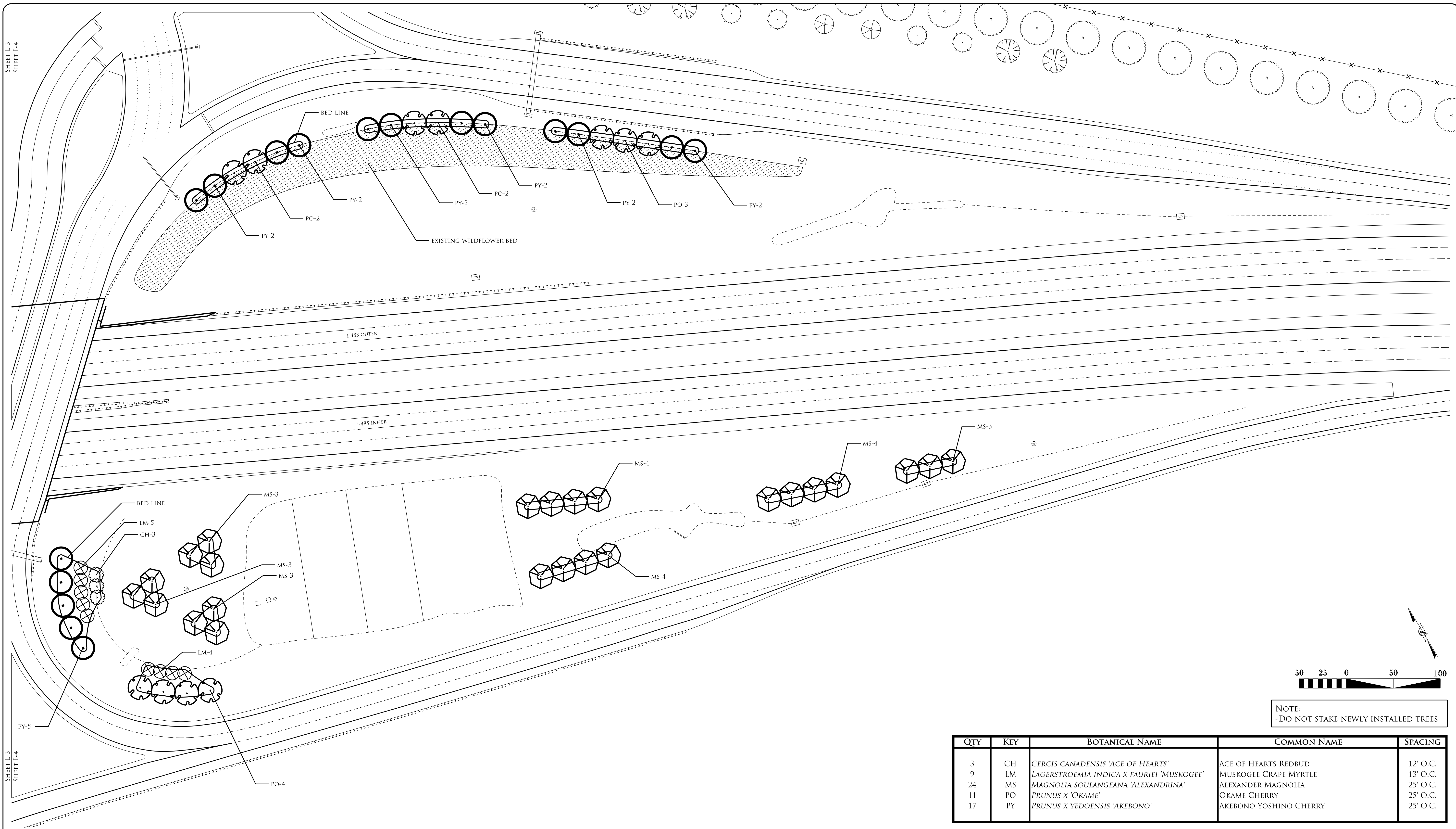
PLANTING PLAN
 LANDSCAPE PLAN SHEET

T.I.P. # R-2248E
 WBS #
 FED I.D. #
 SHEET NO.: **L-3** TOTAL SHEET NO.: **5**



SHEET L-4
SHEET L-3

SHEET L-4
SHEET L-3



NOTE:
-DO NOT STAKE NEWLY INSTALLED TREES.

| QTY | KEY | BOTANICAL NAME | COMMON NAME | SPACING |
|-----|-----|---|------------------------|----------|
| 3 | CH | <i>CERCIS CANADENSIS</i> 'ACE OF HEARTS' | ACE OF HEARTS REDBUD | 12' O.C. |
| 9 | LM | <i>LAGERSTROEMIA INDICA</i> X <i>FAURIEI</i> 'MUSKOGEE' | MUSKOGEE CRAPE MYRTLE | 13' O.C. |
| 24 | MS | <i>MAGNOLIA SOULANGEANA</i> 'ALEXANDRINA' | ALEXANDER MAGNOLIA | 25' O.C. |
| 11 | PO | <i>PRUNUS</i> X 'OKAME' | OKAME CHERRY | 25' O.C. |
| 17 | PY | <i>PRUNUS</i> X <i>YEDOENSIS</i> 'AKEBONO' | AKEBONO YOSHINO CHERRY | 25' O.C. |

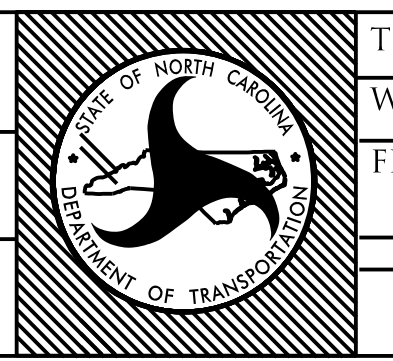
NCDOT - ROADSIDE ENVIRONMENTAL UNIT
 LANDSCAPE DESIGN & DEVELOPMENT
 1557 MAIL SERVICE CENTER RALEIGH NC 27699-1557
 PH: 919-707-2935 FAX: 919-715-2554
[HTTP://WWW.NCDOT.ORG/DOH/OPERATIONS/DP/CHIEF_ENG/ROADSIDE/](http://www.ncdot.org/doh/operations/dp/chief_eng/roadside/)

I-85 & MALLARD CREEK RD
 MECKLENBURG COUNTY
 TIP #: R-2248E

REU. DESIGNER

SHEET DESCRIPTION:
 PREL. DESIGN DATE: MARCH 2016
 CHECKED BY & DATE:
 FINAL DESIGN DATE: JUNE 13, 2016

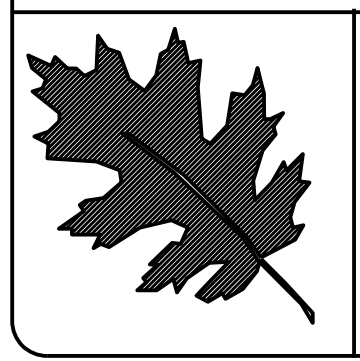
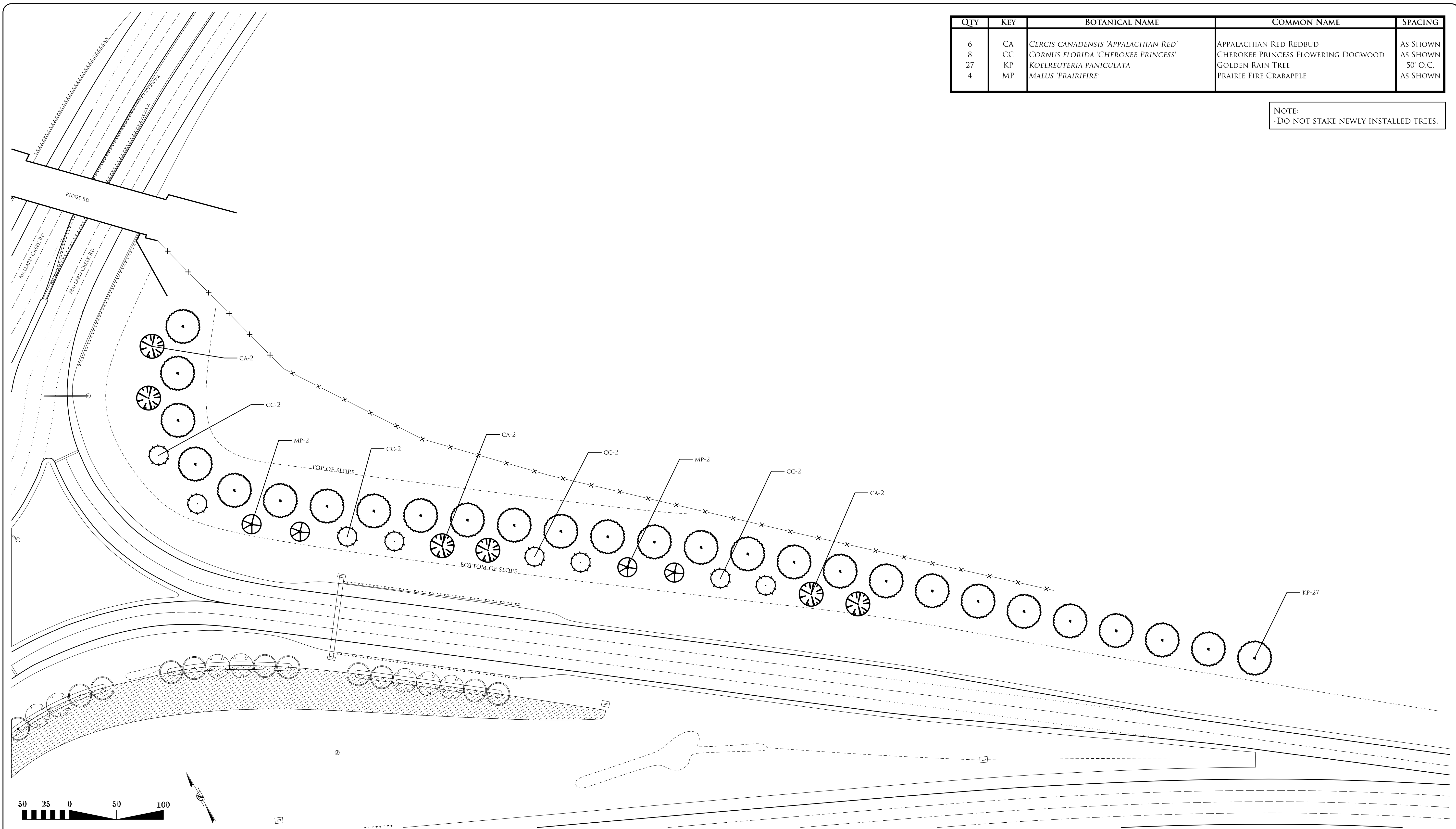
PLANTING PLAN
 LANDSCAPE PLAN SHEET



T.I.P. # R-2248E
 WBS #
 FED I.D. #
 SHEET NO.: **L-4** TOTAL SHEET NO.: **5**

| QTY | KEY | BOTANICAL NAME | COMMON NAME | SPACING |
|-----|-----|-------------------------------------|-------------------------------------|----------|
| 6 | CA | CERCIS CANADENSIS 'APPALACHIAN RED' | APPALACHIAN RED REDBUD | AS SHOWN |
| 8 | CC | CORNUS FLORIDA 'CHEROKEE PRINCESS' | CHEROKEE PRINCESS FLOWERING DOGWOOD | AS SHOWN |
| 27 | KP | KOELREUTERIA PANICULATA | GOLDEN RAIN TREE | 50' O.C. |
| 4 | MP | MALUS 'PRAIRIFIRE' | PRAIRIE FIRE CRABAPPLE | AS SHOWN |

NOTE:
-DO NOT STAKE NEWLY INSTALLED TREES.



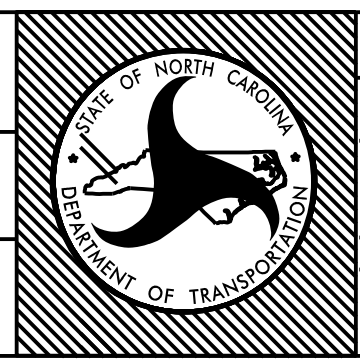
NCDOT - ROADSIDE ENVIRONMENTAL UNIT
 LANDSCAPE DESIGN & DEVELOPMENT
 1557 MAIL SERVICE CENTER RALEIGH NC 27699-1557
 PH: 919-707-2935 FAX: 919-715-2554
[HTTP://WWW.NCDOT.ORG/DOH/OPERATIONS/DP_CHIEF_ENG/ROADSIDE/](http://www.ncdot.org/doh/operations/dp_chief_eng/roadside/)

I-85 & MALLARD CREEK RD
 MECKLENBURG COUNTY
 TIP #: R-2248E

REG. DESIGNER
Kyle Cooney

SHEET DESCRIPTION:
 PREL. DESIGN DATE: MARCH 2016
 CHECKED BY & DATE:
 FINAL DESIGN DATE: JUNE 13, 2016

PLANTING PLAN
 LANDSCAPE PLAN SHEET



T.I.P. # R-2248E
 WBS #
 FED I.D. #
 SHEET NO.: **L-5** TOTAL SHEET NO.: **5**