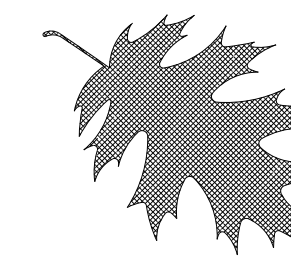
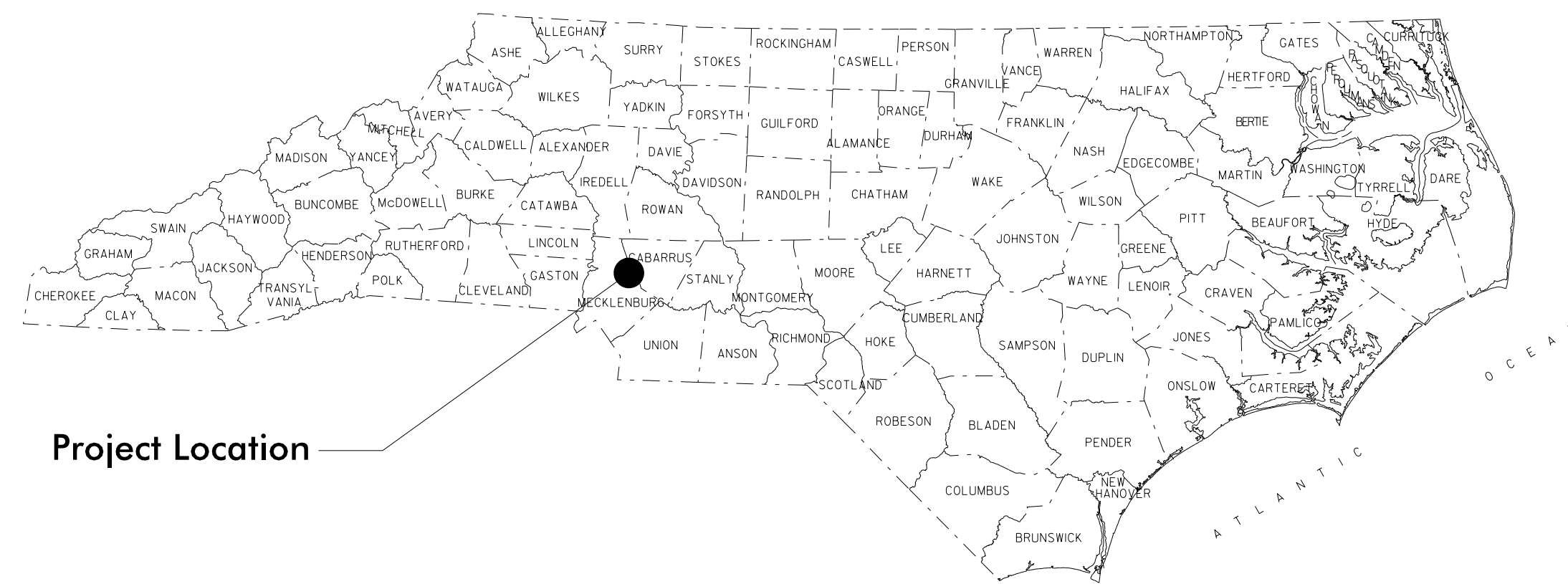
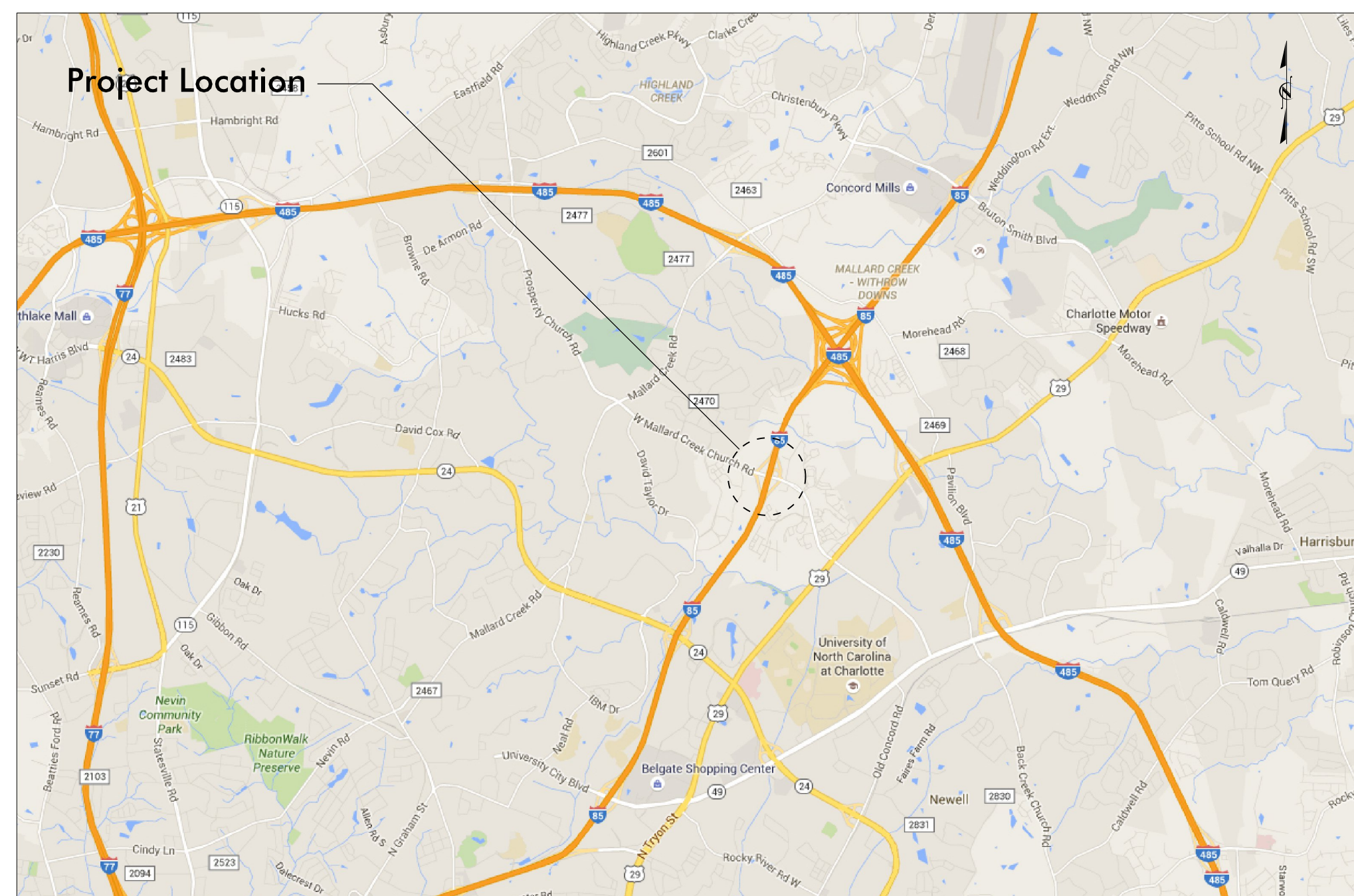


HIGHWAY LANDSCAPE DEVELOPMENT PROJECT



T.I.P. #	STATE PROJECT W.B.S. #	SHEET #	SHEET # TOTAL
R-2123CE	---	L1	6
FED. PROJ. #	DESCRIPTION		DIVISION
-	TIP		10



Project Location

CONVENTIONAL SYMBOLS

- County Line.....
- City or Town Line.....
- Exist. Right of Way Line Marker.....
- Prop. Right of Way Line Marker (By Others).....
- Prop Right of Way Line Marker (By Contract).....
- Exist. Control of Access Line.....
- Prop. Control of Access Line.....
- Property Line.....
- Easement Line.....
- Expose Stake Line.....
- Exist. Fence.....
- Prop. Woven Wire Fence.....
- Prop. Chain Link Fence.....
- Exist. Road.....
- Prop. Road.....
- Guardrail.....
- Survey Line.....
- Denotes Line Equality.....
- Bridge.....
- Culvert.....
- Railroad.....
- Woods.....
- Exist. Telephone Pole.....
- Prop. Telephone Pole.....
- Tower Pole and Line.....
- Exist. Power Pole.....
- Prop. Power Pole.....
- Sanitary Sewer Line.....
- Water Line.....
- Gas Line.....
- Picnic Shelter.....
- Regeneration.....
- Reforestation.....

INDEX OF L SHEETS:

- L 1.0 - Title Sheet
- L 2.0 - Planting Details
- L 3.0 - Design Plan Quadrant 1
- L 4.0 - Design Plan Quadrant 2
- L 5.0 - Design Plan Quadrant 3
- L 6.0 - Design Plan Quadrant 4

PREPARED BY: KC DATE: 06/2016

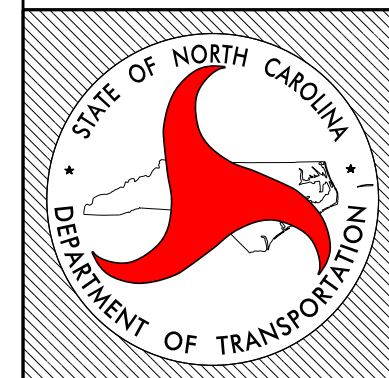
REVISIONS

DATE	DESCRIPTION

Summary of Quantities 1 year establishment

DES	SEC	QTY	UNIT	KEY	BOTANICAL NAME	COMMON NAME	SIZE	CALIPER	FURNISH	A.S.N.S.	REMARKS
Trees											
L	1670	13	ea	LM	<i>Lagerstroemia Indica x Fauriei</i> 'Muskogee'	Muskogee Crape Myrtle	5-6'		B&B	2.5	30' O.C.
L	1670	12	ea	ML	<i>Magnolia grandiflora</i> 'Little Gem'	Little Gem Magnolia	6-7'		B&B	2.2	30' O.C.
L	1670	3	ea	QP	<i>Quercus palustris</i>	Pin Oak		1.5-2"	B&B	2.1	As Shown
Other Vegetation Costs											
L	1670	3	Acre		Clearing and Grubbing						
L	1670	9	CY		Mulch for New Trees						Depth of 4"
L	1670	83	M/G		Water for planting and seeding	Planting(2 M/G); Seeding (81 M/G)					
L	1670	3	Acre		Seeding & Mulching (Fescue Grass seed mix)						
L	1670	14520	SY		Pre emergence Herbicidal Treatment						
L	1670	14520	SY		Post emergence Herbicidal Treatment						

Charlotte I-85 & Mallard Creek Church Rd



**STATE OF
NORTH CAROLINA
DEPARTMENT OF TRANSPORTATION**

LOCATION: Charlotte I-85 & Mallard Creek Church Rd.

TYPE of WORK: T.I.P.

COUNTY: **Mecklenburg County**

2014 American Standard for Nursery Stock

2012 NCDOT STANDARD SPECIFICATIONS

PREPARED IN THE OFFICE OF:
NCDOT- ROADSIDE ENVIRONMENTAL UNIT
LANDSCAPE DESIGN & DEVELOPMENT SECTION
1557 MAIL SERVICE CENTER
RALEIGH NC 27699 919-707-2920

\$\$\$\$\$SYTIME\$\$\$\$\$
\$\$\$\$\$USERNAME\$\$\$\$\$

NOTES:

SCHEDULE FOR PLANT HOLE SIZE:
PLANT HOLE WIDTH (X) TO BE TWICE THE ROOT BALL SIZE OR CONTAINER DIAMETER.

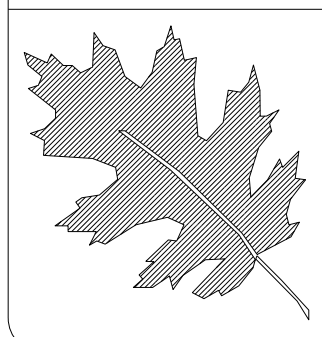
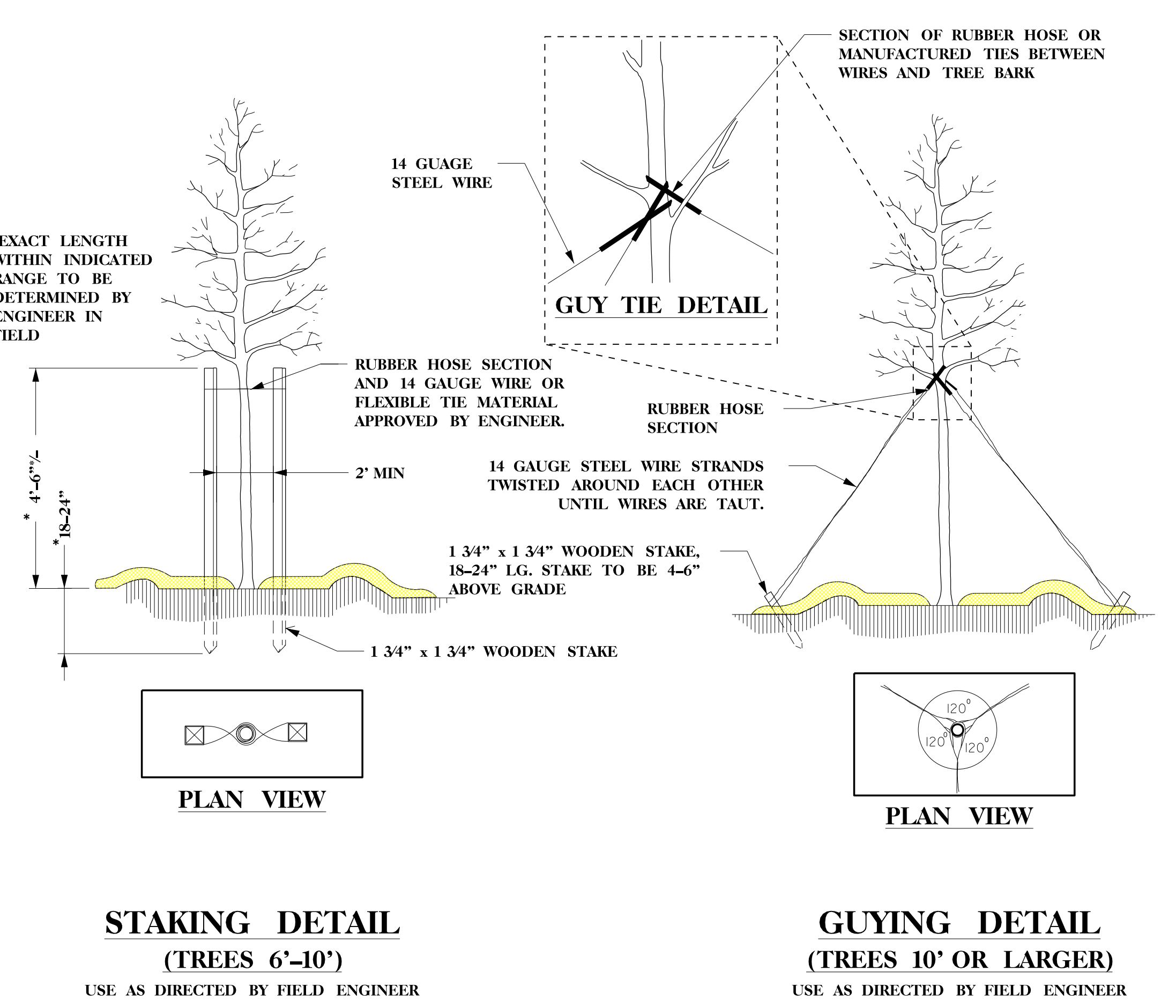
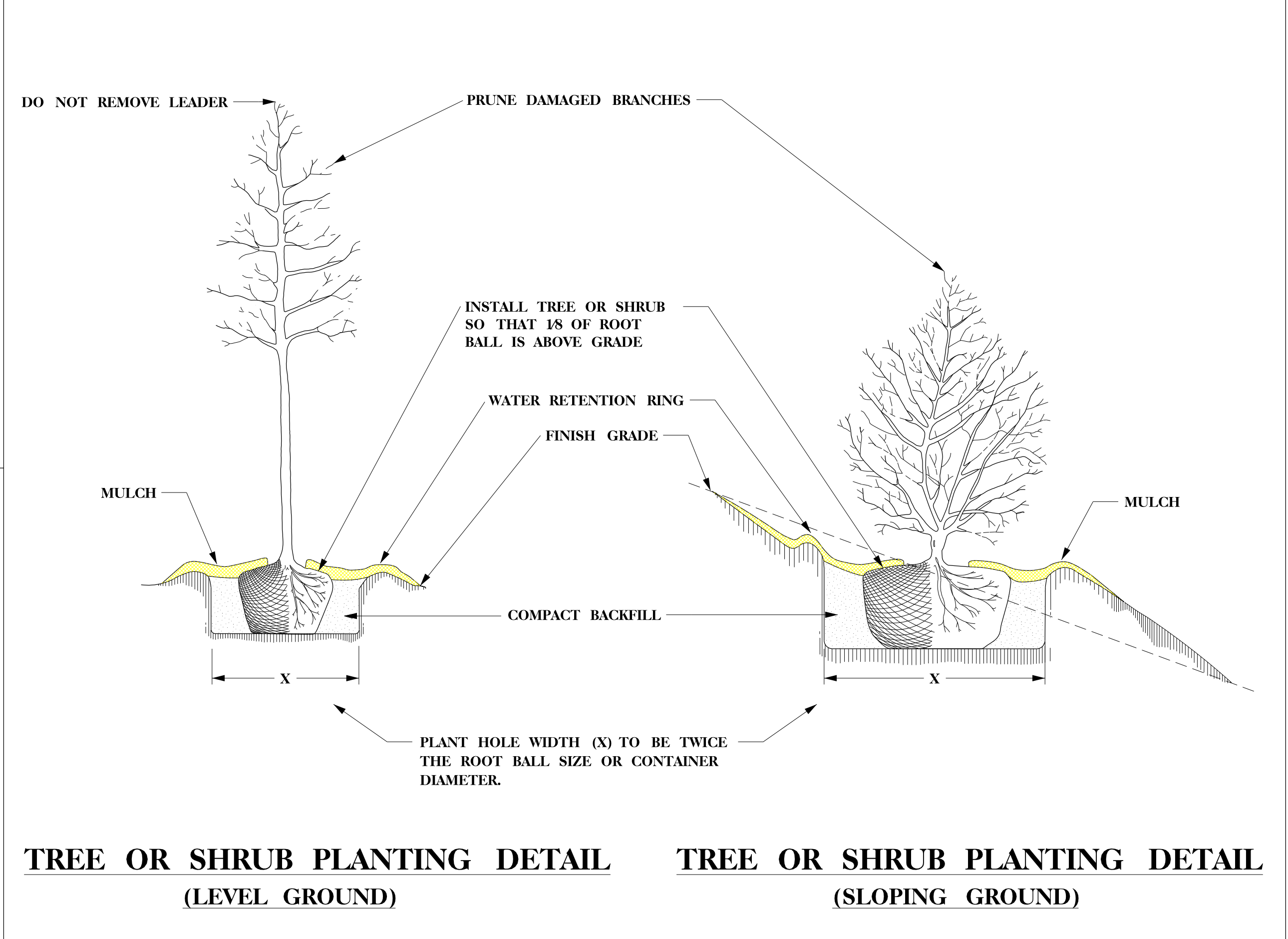
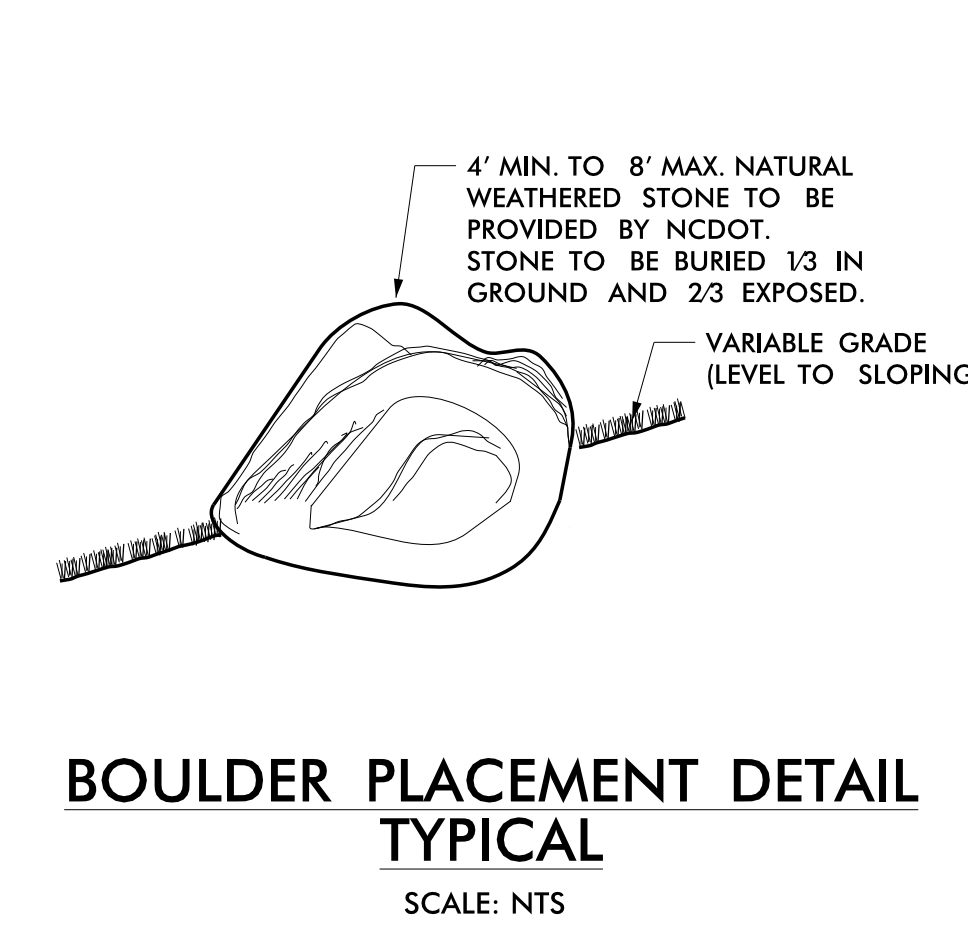
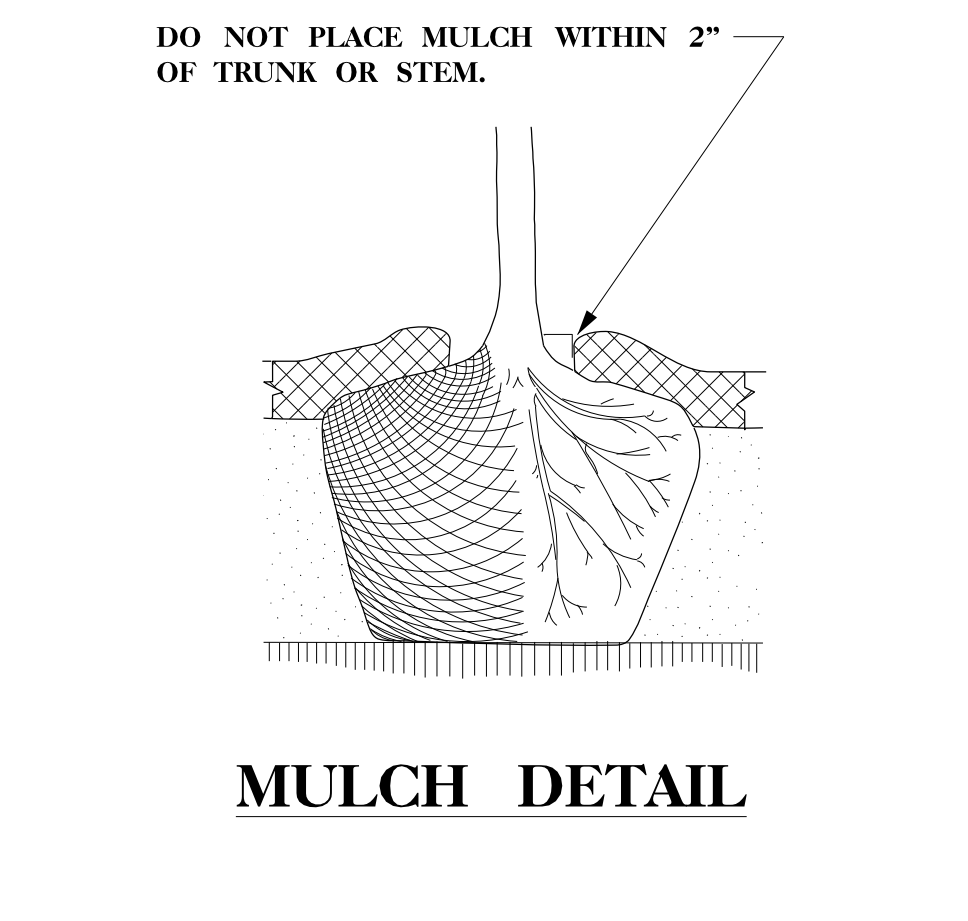
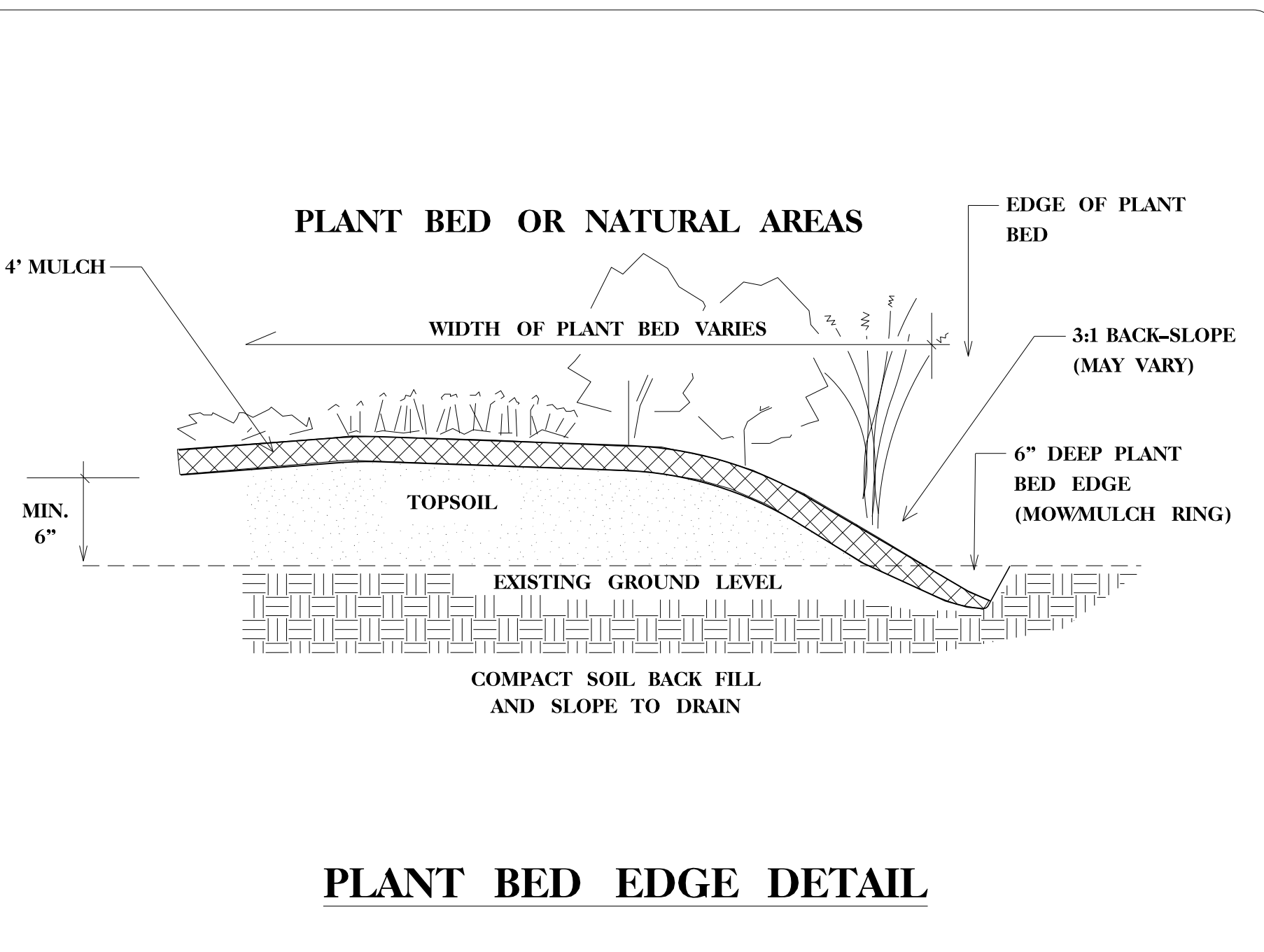
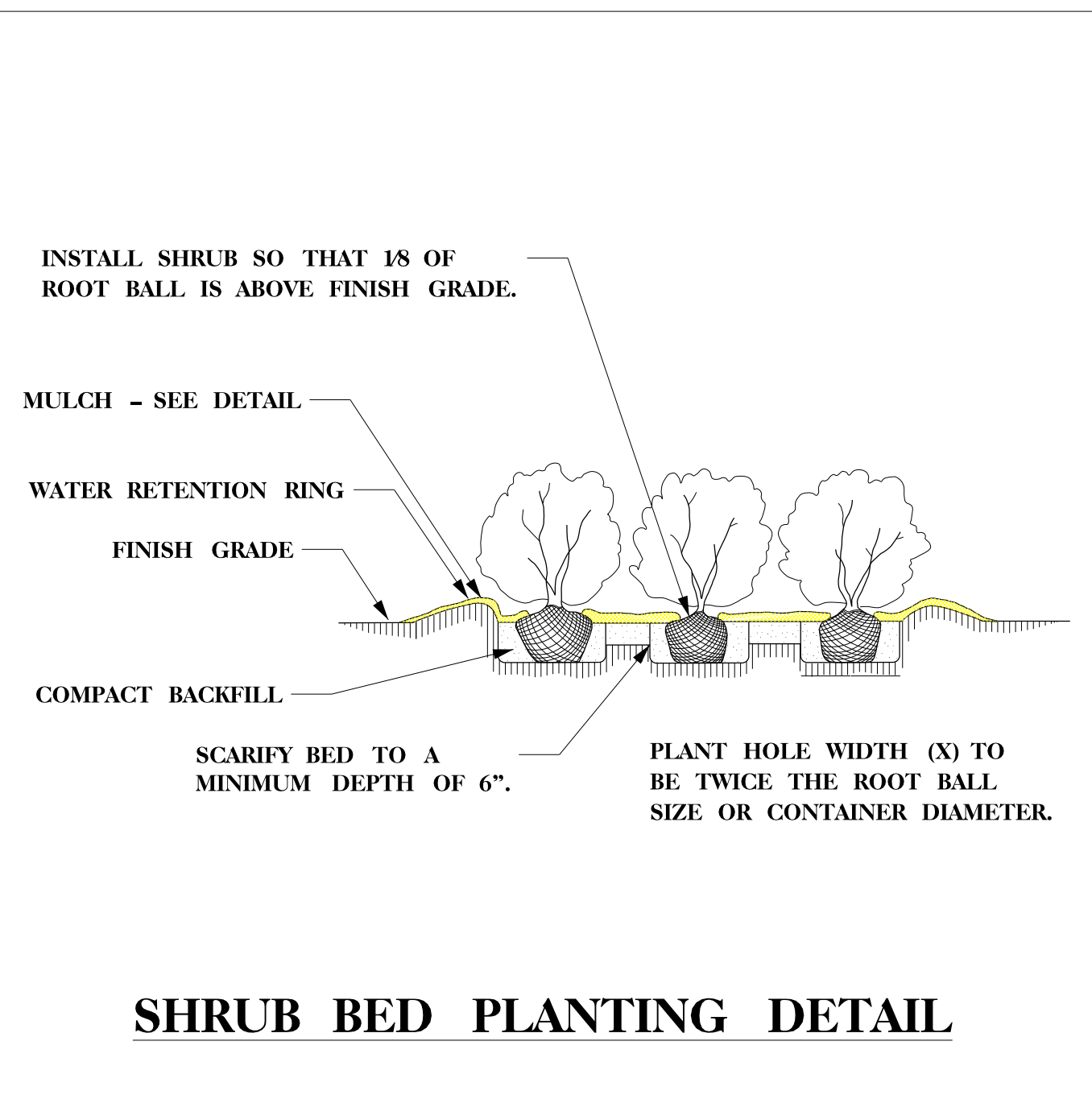
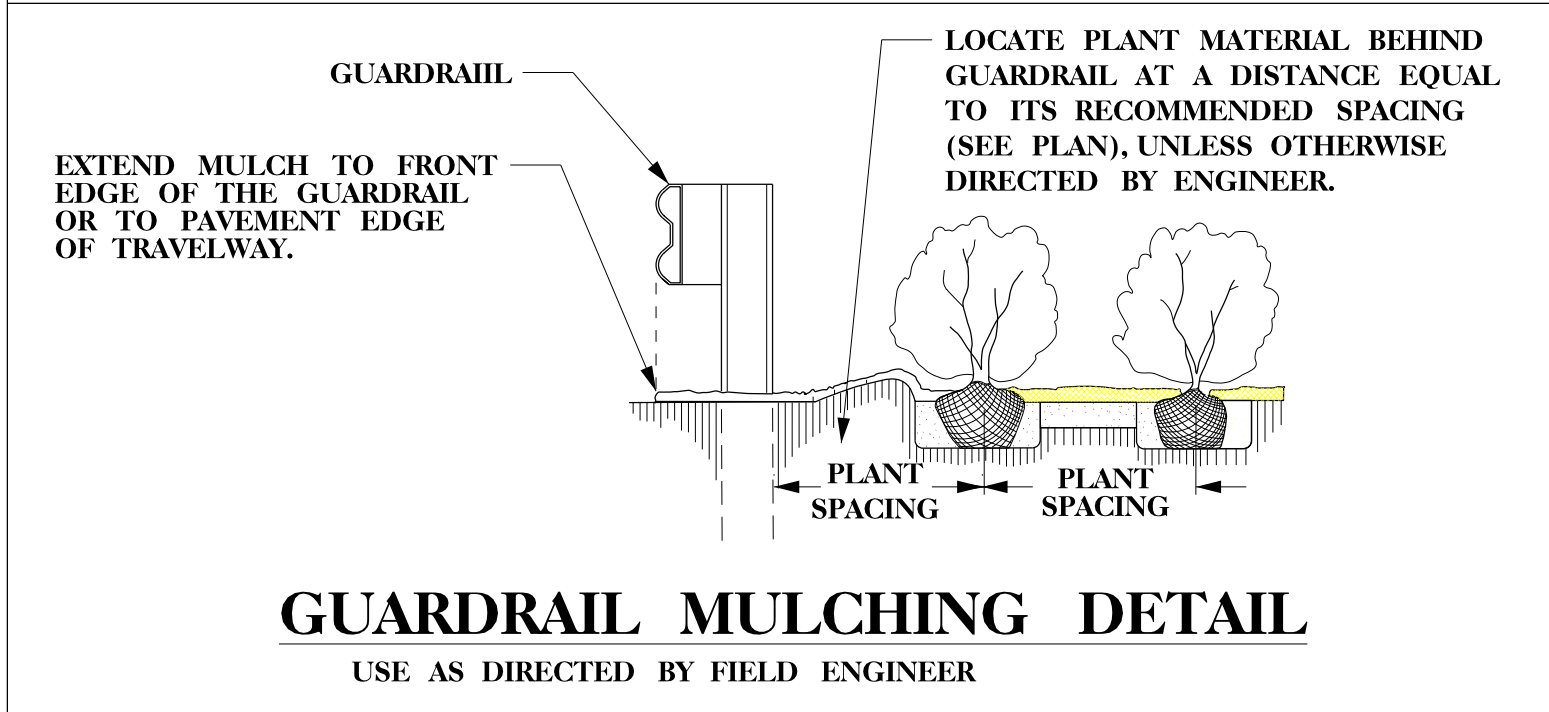
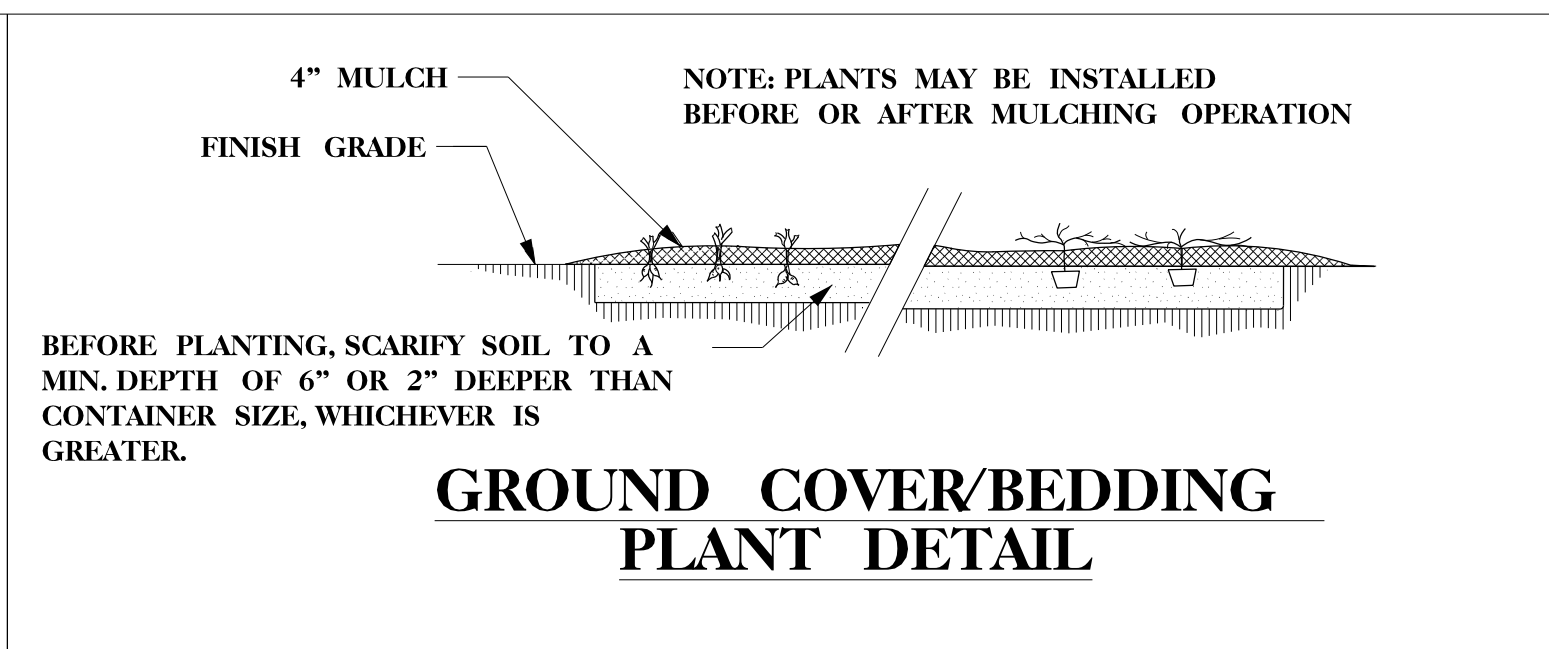
SEE STANDARD SPECIFICATIONS FOR PLANT BED FUMIGATION AND HERBICIDAL TREATMENT.

APPLY FERTILIZER AT PLANTING TIME IN THE FORM OF A SLOW RELEASE PELLET OR TABLET. APPLY AT RATE RECOMMENDED BY MANUFACTURER. BOTH RATE AND FORMULATION MUST BE APPROVED BY FIELD ENGINEER PRIOR TO APPLICATION.

REMOVE WIRE BASKET AND FOLD BURLAP BACK FROM TOP OF ROOT BALL BEFORE BACKFILLING IS COMPLETE.

ALL PRUNING TO FOLLOW STANDARD ARBORICULTURAL PRACTICES AS SPECIFIED BY INTERNATIONAL SOCIETY OF ARBORICULTURE.

DO NOT ATTEMPT TO STRAIGHTEN A TREE THAT HAS BEEN PLANTED AT AN ANGLE WITH THE USE OF STAKING OR GUYING. DIG TREE AND REPLANT TO UPRIGHT POSITION.



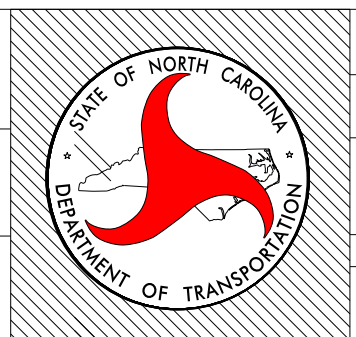
NCDOT - ROADSIDE ENVIRONMENTAL UNIT
LANDSCAPE DESIGN & DEVELOPMENT
1557 MAIL SERVICE CENTER RALEIGH NC 27699-1557
PH: 919-707-2935 FAX: 919-715-2554
HTTP://WWW.NCDOT.ORG/DOH/OPERATIONS/DP_CHIEF_ENG/ROADSIDE/

I-85 & MALLARD CREEK CHURCH RD
MECKLENBURG COUNTY
TIP #: R-2123CE

DESIGNER
KYLE COOPER

PREL. DESIGN DATE:	MARCH 2016
CHECKED BY & DATE:	
FINAL DESIGN DATE:	JUNE 10, 2016

PLANTING DETAILS

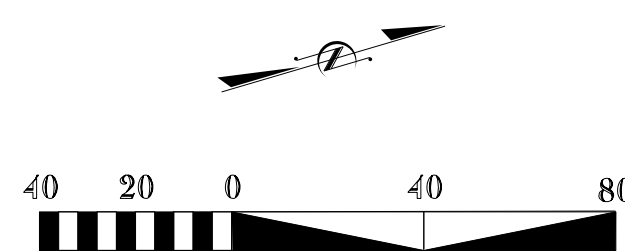
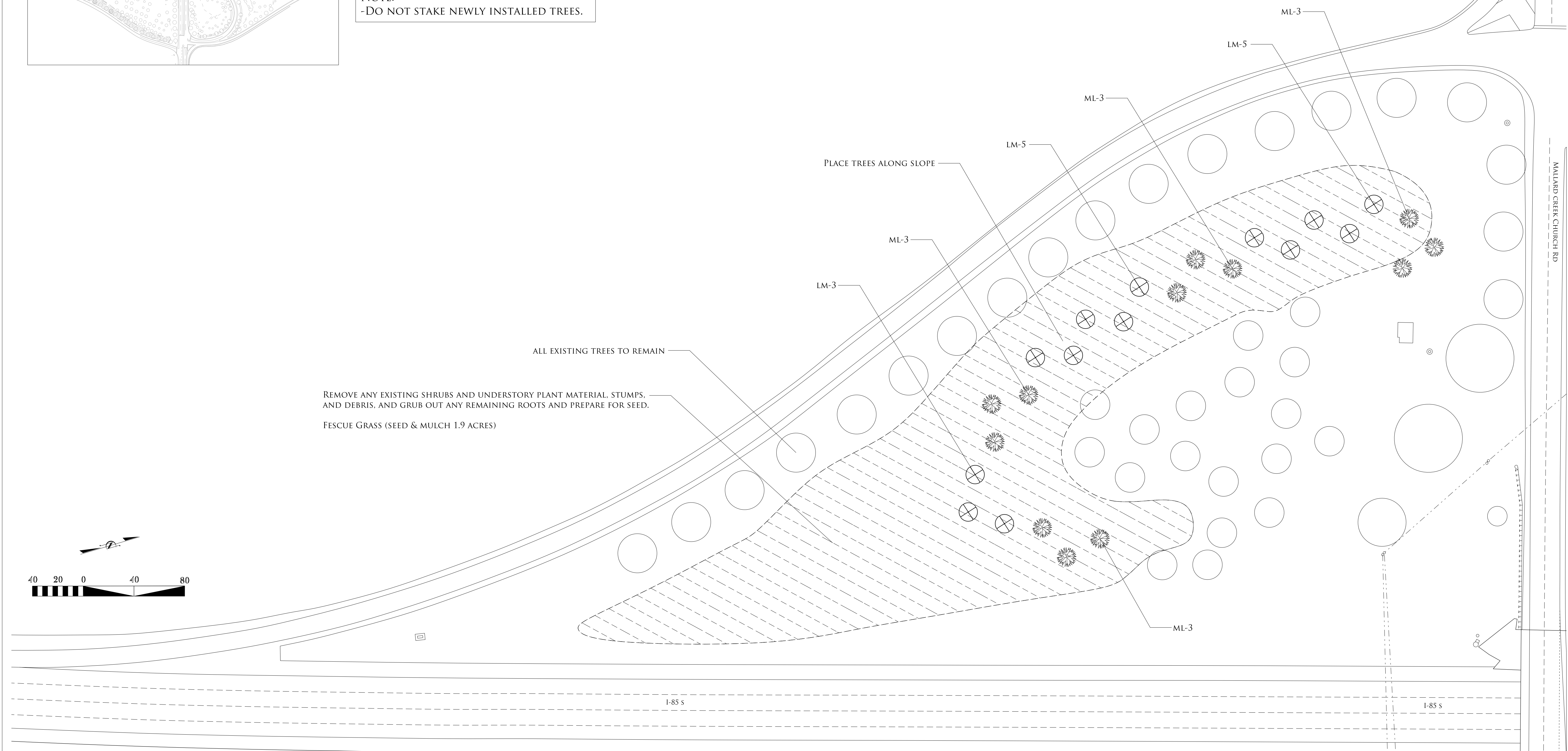


T.I.P. # R-2123CE
WBS #
FED I.D. #
SHEET NO.: L-2
TOTAL SHEET NO.: 6



QTY	KEY	BOTANICAL NAME	COMMON NAME
13	LM	<i>LAGERSTROEMIA INDICA X FAURIEI</i> 'MUSKOGEE'	MUSKOGEE CRAPE MYRTLE
12	ML	<i>MAGNOLIA GRANDIFLORA</i> 'LITTLE GEM'	LITTLE GEM MAGNOLIA
1.9 ACRES		SEEDING & MULCHING (FESCUE GRASS SEED MIX)	

NOTE:
-DO NOT STAKE NEWLY INSTALLED TREES.



NCDOT - ROADSIDE ENVIRONMENTAL UNIT
 LANDSCAPE DESIGN & DEVELOPMENT
 1557 MAIL SERVICE CENTER RALEIGH NC 27699-1557
 PH: 919-707-2935 FAX: 919-715-2554
[HTTP://WWW.NCDOT.ORG/DOH/OPERATIONS/DP_CHIEF_ENG/ROADSIDE/](http://www.ncdot.org/doh/operations/dp_chief_eng/roadside/)

I-85 & MALLARD CREEK CHURCH RD
 MECKLENBURG COUNTY
 TIP #: R-2123CE

PREPARED BY: KYLE COOPER

SHEET DESCRIPTION:

PREL DESIGN DATE: MARCH 2016

CHECKED BY & DATE:

FINAL DESIGN DATE: JUNE 10, 2016

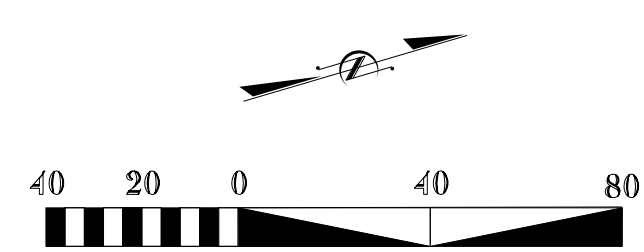
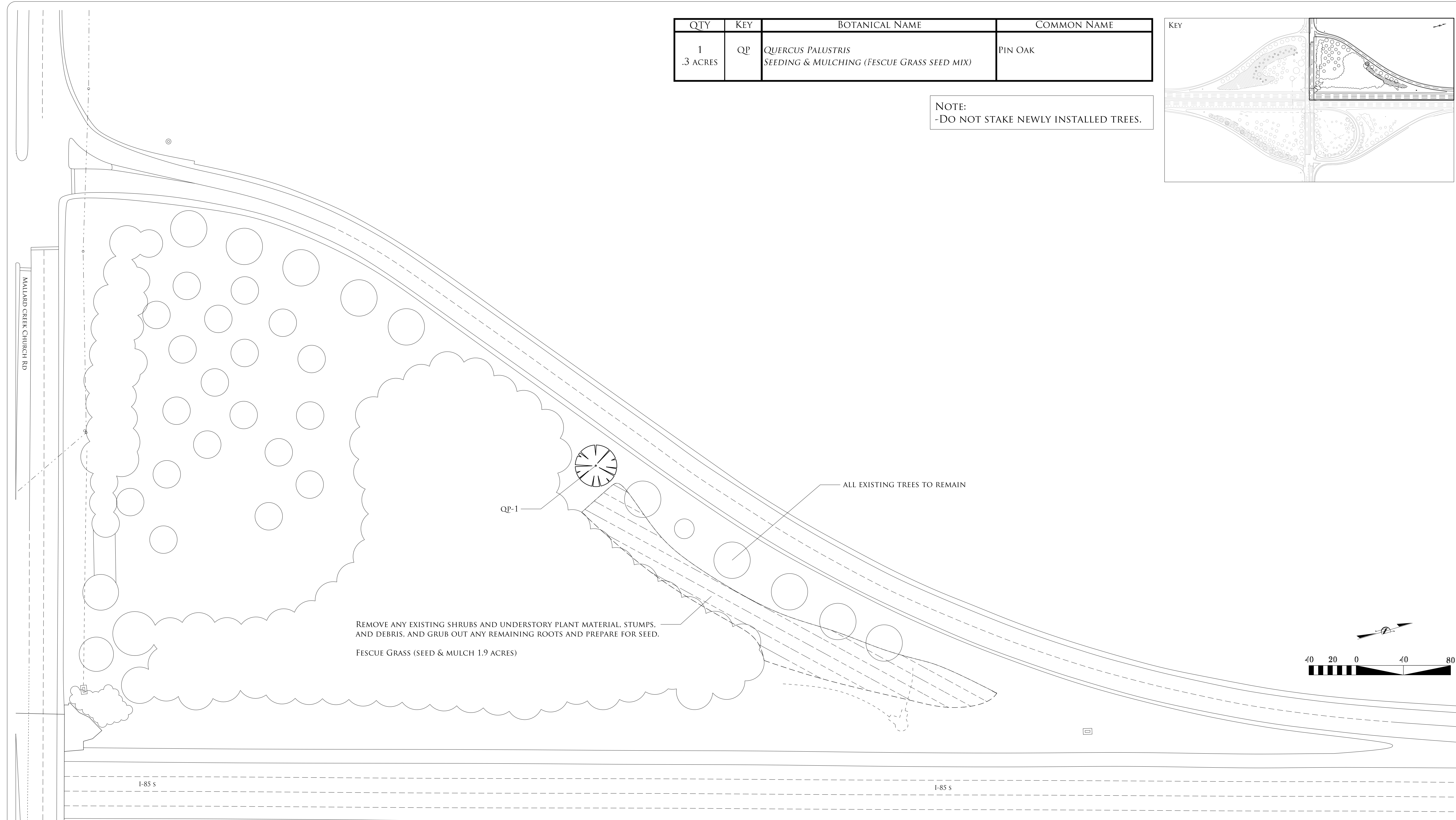
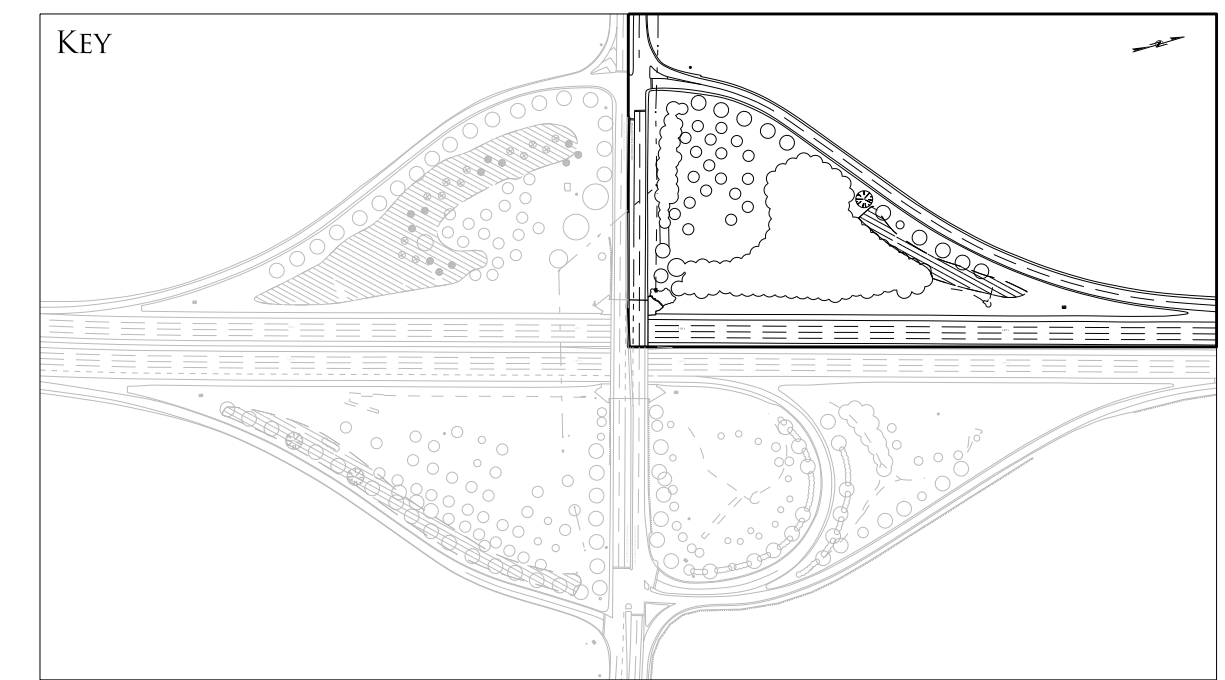
PLANTING PLAN
 LANDSCAPE PLAN SHEET

T.I.P. # R-2123CE
 WBS #
 FED I.D. #

SHEET NO.: **L-3** TOTAL SHEET NO.: **6**

QTY	KEY	BOTANICAL NAME	COMMON NAME
1 .3 ACRES	QP	QUERCUS PALUSTRIS SEEDING & MULCHING (FESCUE GRASS SEED MIX)	PIN OAK

NOTE:
-DO NOT STAKE NEWLY INSTALLED TREES.



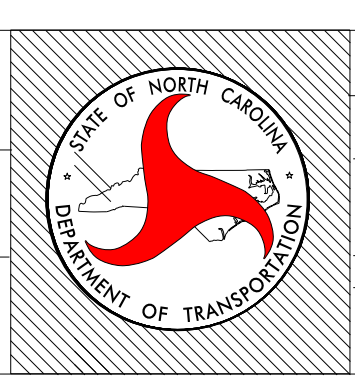
 NCDOT - ROADSIDE ENVIRONMENTAL UNIT
LANDSCAPE DESIGN & DEVELOPMENT
1557 MAIL SERVICE CENTER RALEIGH NC 27699-1557
PH: 919-707-2935 FAX: 919-715-2554
[HTTP://WWW.NCDOT.ORG/DOH/OPERATIONS/DP_CHIEF_ENG/ROADSIDE/](http://www.ncdot.org/doh/operations/dp_chief_eng/roadside/)

I-85 & MALLARD CREEK CHURCH RD
MECKLENBURG COUNTY
TIP #: R-2123CE

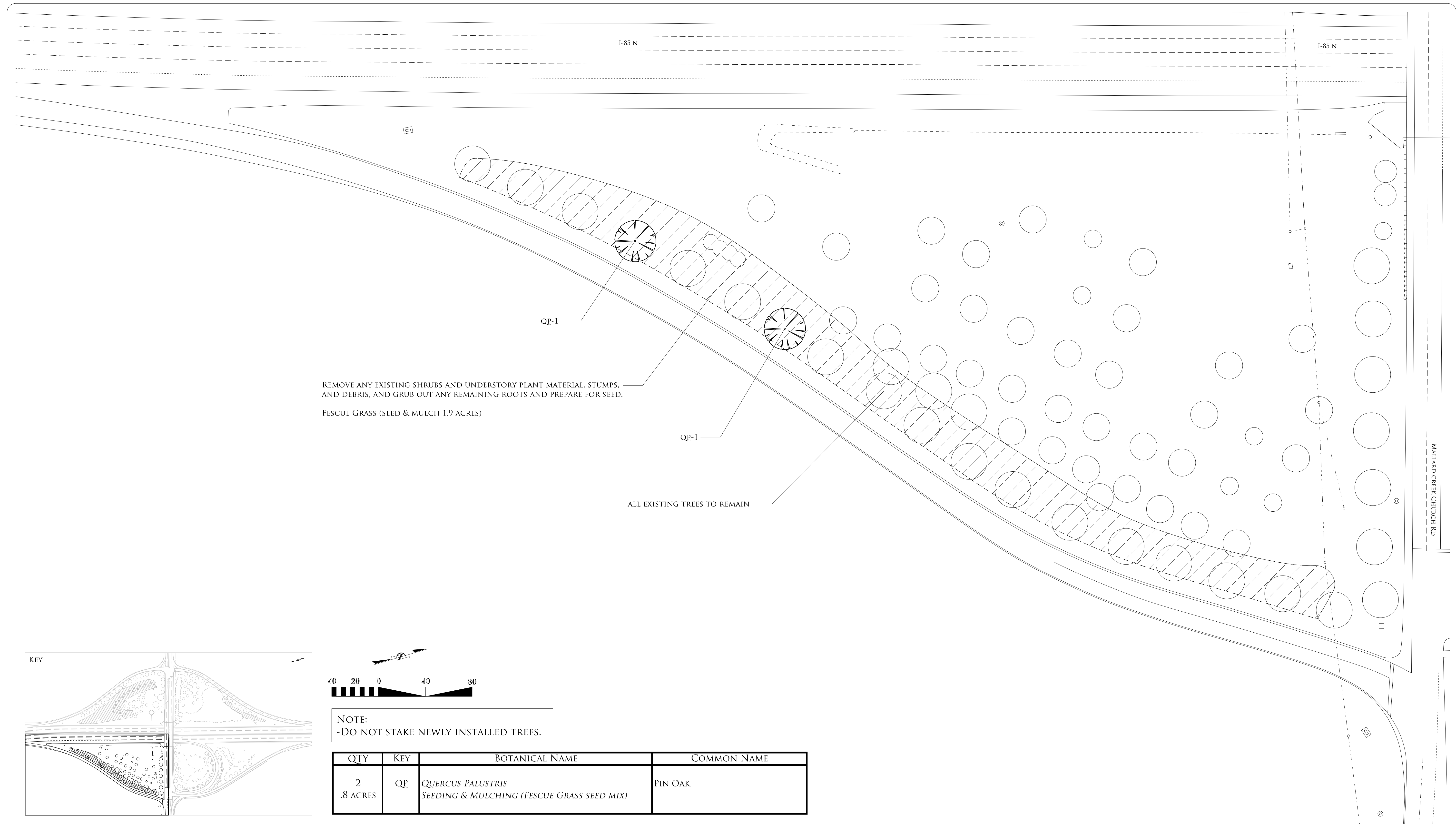
PREPARED BY: *Kyle Cooper*

SHEET DESCRIPTION:
PREL DESIGN DATE: MARCH 2016
CHECKED BY & DATE:
FINAL DESIGN DATE: JUNE 10, 2016

PLANTING PLAN
LANDSCAPE PLAN SHEET

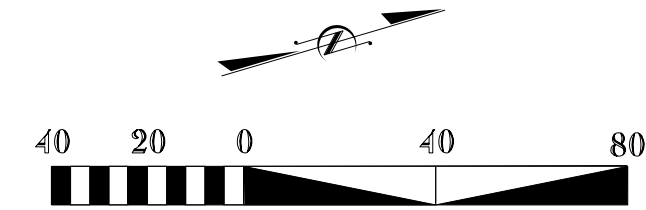
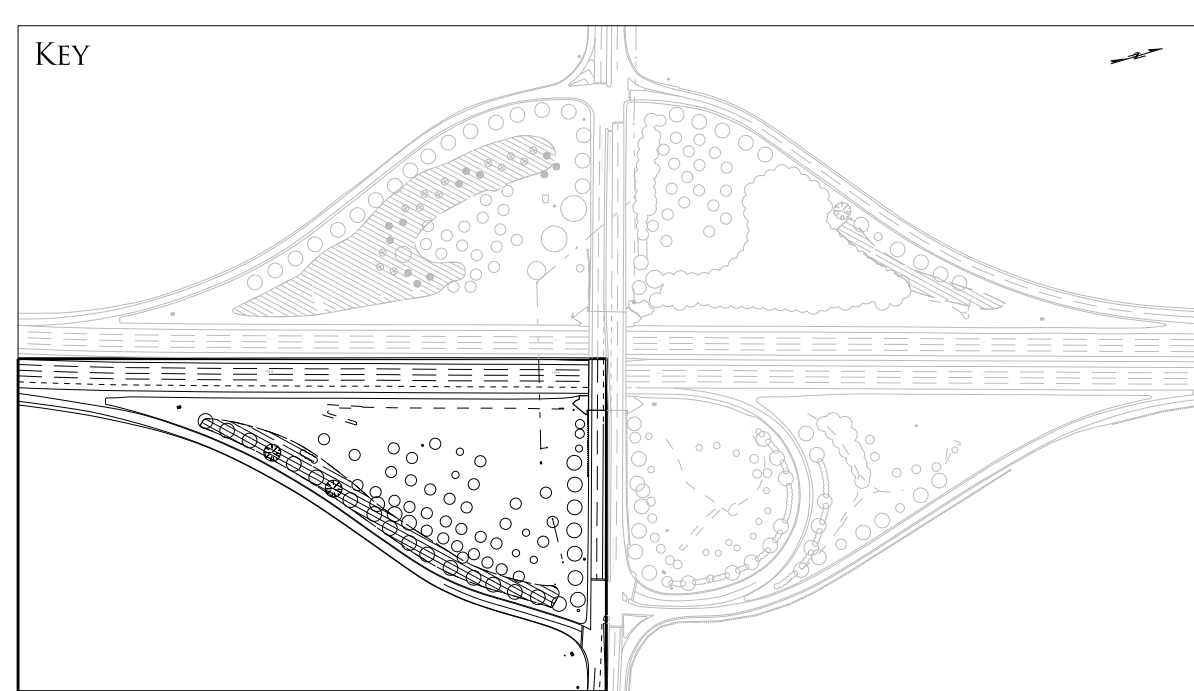


T.I.P. # R-2123CE
WBS #
FED I.D. #
SHEET NO.: **L-4** TOTAL SHEET NO.: **6**



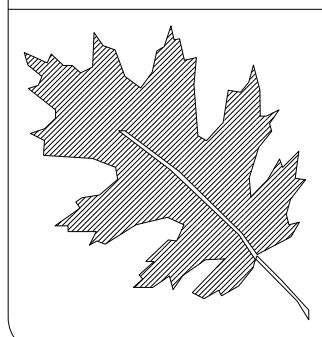
REMOVE ANY EXISTING SHRUBS AND UNDERSTORY PLANT MATERIAL, STUMPS, AND DEBRIS, AND GRUB OUT ANY REMAINING ROOTS AND PREPARE FOR SEED.
 FESCUE GRASS (SEED & MULCH 1.9 ACRES)

ALL EXISTING TREES TO REMAIN



NOTE:
 -DO NOT STAKE NEWLY INSTALLED TREES.

QTY	KEY	BOTANICAL NAME	COMMON NAME
2	QP	<i>QUERCUS PALUSTRIS</i>	PIN OAK
.8 ACRES		SEEDING & MULCHING (FESCUE GRASS SEED MIX)	



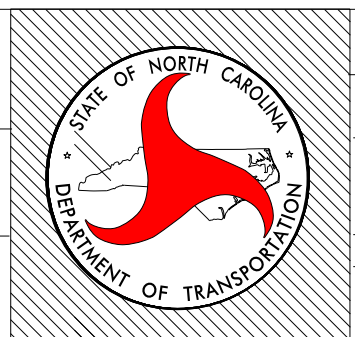
NCDOT - ROADSIDE ENVIRONMENTAL UNIT
 LANDSCAPE DESIGN & DEVELOPMENT
 1557 MAIL SERVICE CENTER RALEIGH NC 27699-1557
 PH: 919-707-2935 FAX: 919-715-2554
[HTTP://WWW.NCDOT.ORG/DOH/OPERATIONS/DP_CHIEF_ENG/ROADSIDE/](http://www.ncdot.org/doh/operations/dp_chief_eng/roadside/)

I-85 & MALLARD CREEK CHURCH RD
 MECKLENBURG COUNTY
 TIP #: R-2123CE

PREPARED BY: DESIGNER
Kyle Cooper

PREL DESIGN DATE:	MARCH 2016
CHECKED BY & DATE:	
FINAL DESIGN DATE:	JUNE 10, 2016

PLANTING PLAN
 LANDSCAPE PLAN SHEET



T.I.P. # R-2123CE
 WBS #
 FED I.D. #
 SHEET NO.: **L-5** TOTAL SHEET NO.: **6**



NOTE:
-NOTHING TO BE DONE IN THIS QUADRANT



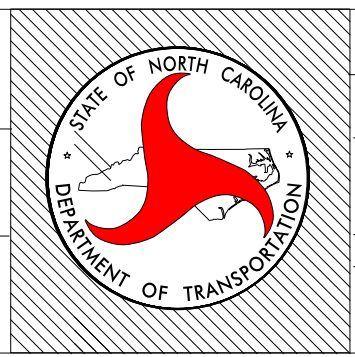
 NCDOT - ROADSIDE ENVIRONMENTAL UNIT
LANDSCAPE DESIGN & DEVELOPMENT
1557 MAIL SERVICE CENTER RALEIGH NC 27699-1557
PH: 919-707-2935 FAX: 919-715-2554
[HTTP://WWW.NCDOT.ORG/DOH/OPERATIONS/DP_CHIEF_ENG/ROADSIDE/](http://www.ncdot.org/doh/operations/dp_chief_eng/roadside/)

I-85 & MALLARD CREEK CHURCH RD
MECKLENBURG COUNTY
TIP #: R-2123CE

PREPARED BY: DESIGNER
Kyle Cooper

SHEET DESCRIPTION:
PREL DESIGN DATE: MARCH 2016
CHECKED BY & DATE:
FINAL DESIGN DATE: JUNE 10, 2016

LANDSCAPE PLAN SHEET



T.I.P. # R-2123CE
WBS #
FED I.D. #
SHEET NO.: **L-6** TOTAL SHEET NO.: **6**