

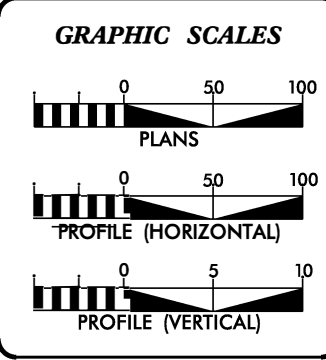
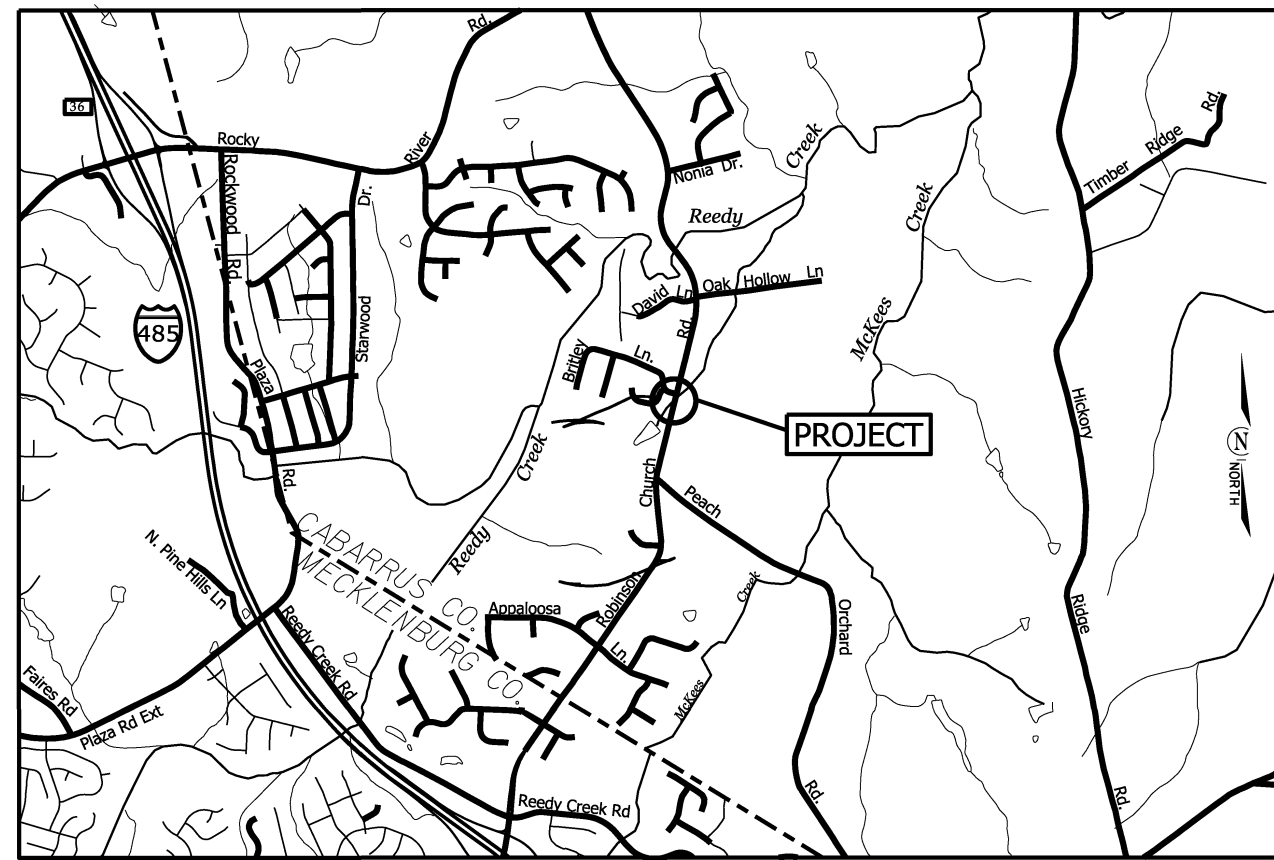
PROJECT: 17110.1013801

STATE OF NORTH CAROLINA
 DIVISION OF HIGHWAYS
CABARRUS COUNTY

STATE	STATE PROJECT REFERENCE NO.	SHEET NO.	TOTAL SHEETS
N.C.	17110.1013801	1	
STATE PROJECT REFERENCE NO.	S.A./P.O./S.A.	DESCRIPTION	
17110.1013801		P.E.	
17110.1013801		R/W	
17110.1013801		CONST.	

LOCATION: ROBINSON CHURCH RD. (SR 1168) 0.25 MILES NORTH OF PEACH ORCHARD RD. (SR 1169)

TYPE OF WORK: REMOVE AND REPLACE STRUCTURAL PIPE



DESIGN DATA

ADT	=	
ADT	=	
DHV	=	%
D	=	%
T	=	%
V	=	MPH

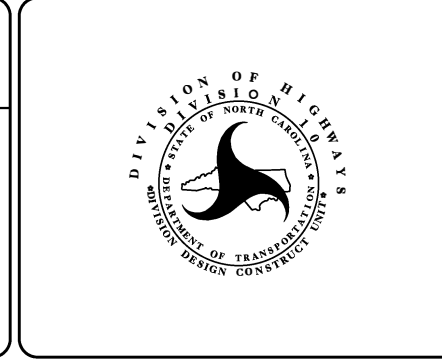
PROJECT LENGTH

LENGTH OF ROADWAY PROJECT 17110.1013801	=	0.01	MILES
TOTAL LENGTH OF STATE PROJECT	=		MILES

Prepared in the Office of:
DIVISION OF HIGHWAYS
 DIVISION TEN
 DIVISION DESIGN / CONSTRUCT UNIT

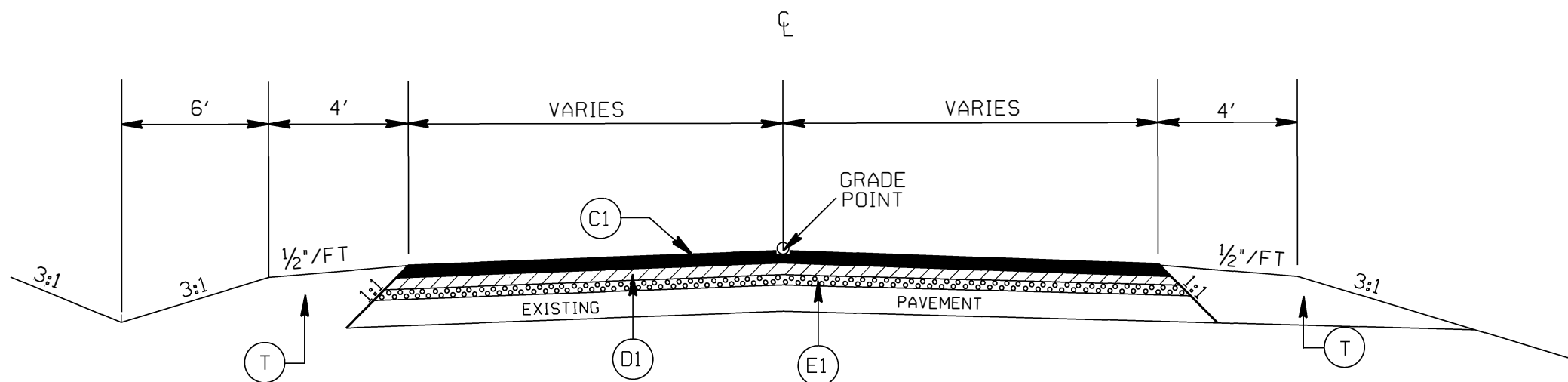
2018 STANDARD SPECIFICATIONS

RIGHT OF WAY DATE: _____	BRAD EAGLE PROJECT ENGINEER
LETTING DATE: DECEMBER 30, 2020	_____ PROJECT DESIGN ENGINEER



DIVISION OF HIGHWAYS
 STATE OF NORTH CAROLINA

APPROVED BY _____ DATE _____
 DDC ENGINEER



TYPICAL SECTION NO. 1

PAVEMENT SCHEDULE

(C1)	PROP. APPROX. 1.5" ASPHALT CONC. SURFACE COURSE, TYPE S9.5B, AT AN AVERAGE RATE OF 168 LBS. PER SQ. YD.
(D1)	PROP. APPROX. 2.5" ASPHALT CONC. INTERMEDIATE COURSE, TYPE I19.0C, AT AN AVERAGE RATE OF 285 LBS. PER SQ. YD.
(E1)	PROP. APPROX. 4" ASPHALT CONC. BASE COURSE, TYPE B25.0C, AT AN AVERAGE RATE OF 456 LBS. PER SQ. YD.
(T)	EARTH MATERIAL

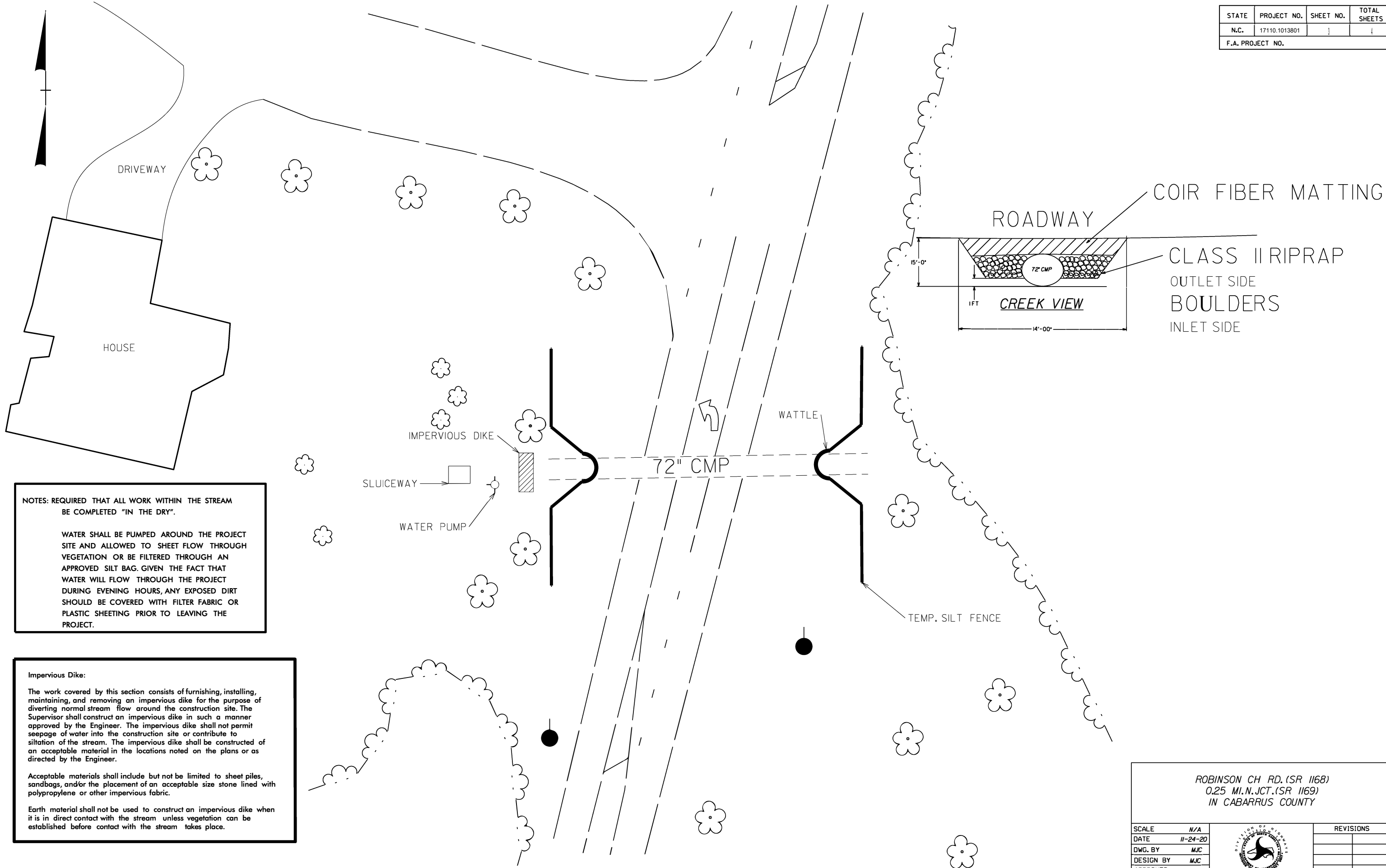
REMOVE AND REPLACE STRUCTURAL PIPE

SCALE 1"=50'
 DATE DEC 2017
 DWG. BY TBL
 DESIGN BY TWB
 APPROVED TWB



REVISIONS	

STATE	PROJECT NO.	SHEET NO.	TOTAL SHEETS
N.C.	17110.1013801	1	1
F.A. PROJECT NO.			



NOTES: REQUIRED THAT ALL WORK WITHIN THE STREAM BE COMPLETED "IN THE DRY".

WATER SHALL BE PUMPED AROUND THE PROJECT SITE AND ALLOWED TO SHEET FLOW THROUGH VEGETATION OR BE FILTERED THROUGH AN APPROVED SILT BAG. GIVEN THE FACT THAT WATER WILL FLOW THROUGH THE PROJECT DURING EVENING HOURS, ANY EXPOSED DIRT SHOULD BE COVERED WITH FILTER FABRIC OR PLASTIC SHEETING PRIOR TO LEAVING THE PROJECT.

Impervious Dike:

The work covered by this section consists of furnishing, installing, maintaining, and removing an impervious dike for the purpose of diverting normal stream flow around the construction site. The Supervisor shall construct an impervious dike in such a manner approved by the Engineer. The impervious dike shall not permit seepage of water into the construction site or contribute to siltation of the stream. The impervious dike shall be constructed of an acceptable material in the locations noted on the plans or as directed by the Engineer.

Acceptable materials shall include but not be limited to sheet piles, sandbags, and/or the placement of an acceptable size stone lined with polypropylene or other impervious fabric.

Earth material shall not be used to construct an impervious dike when it is in direct contact with the stream unless vegetation can be established before contact with the stream takes place.

ROBINSON CH RD. (SR 1168)
0.25 MI. N. JCT. (SR 1169)
IN CABARRUS COUNTY

SCALE	N/A		REVISIONS
DATE	11-24-20		
DWG. BY	MJC		
DESIGN BY	MJC		
APPROVED	N/A		

DIVISION OF HIGHWAYS
STATE OF NORTH CAROLINA

SOIL STABILIZATION TIMEFRAMES

PROJECT REFERENCE NO. 17110.1013801	SHEET NO. 4
ROADWAY DESIGN ENGINEER	HYDRAULICS ENGINEER

<i>SITE DESCRIPTION</i>	<i>STABILIZATION TIME</i>	<i>TIMEFRAME EXCEPTIONS</i>
PERIMETER DIKES, SWALES, DITCHES AND SLOPES	7 DAYS	NONE
HIGH QUALITY WATER (HQW) ZONES	7 DAYS	NONE
SLOPES STEEPER THAN 3:1	7 DAYS	IF SLOPES ARE 10' OR LESS IN LENGTH AND ARE NOT STEEPER THAN 2:1, 14 DAYS ARE ALLOWED.
SLOPES 3:1 OR FLATTER	14 DAYS	7 DAYS FOR SLOPES GREATER THAN 50' IN LENGTH.
ALL OTHER AREAS WITH SLOPES FLATTER THAN 4:1	14 DAYS	NONE, EXCEPT FOR PERIMETERS AND HQW ZONES.